

RF-G1179 Bi-directional Mini Drop Amplifier



This bi-directional mini drop amplifier is designed to work with cable systems that have pay-per-view, digital cable, or cable modems.

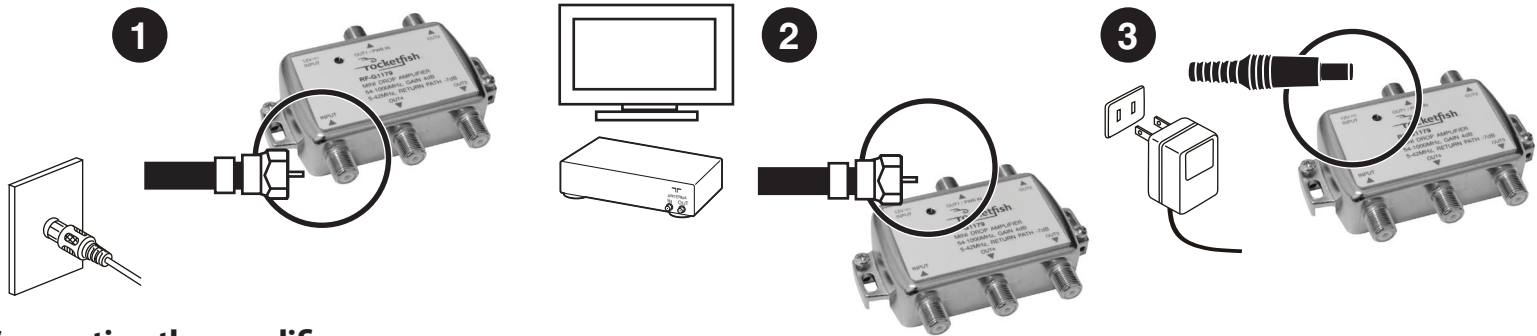


Features

- 5-42 MHz, 54-1000 MHz two-way frequency range
- For use with cable TV, indoor or outdoor VHF/UHF/FM antenna.
- Simple to install
- Two-way frequency range
- LED power on indicator
- Connections for up to four devices

Package contents

- Bi-directional mini drop amplifier
- AC adapter
- *Quick Setup Guide*



Connecting the amplifier

- 1 Connect a coaxial cable to the coax **INPUT** jack on the amplifier and to the cable TV or antenna jack.
- 2 Connect a coaxial cable to the **OUT 1/PWR IN** jack on the amplifier and to the **ANTENNA IN** jack on the back of the TV, or cable box.
- 3 Connect the AC adapter to the **INPUT** jack and to a power outlet. When the amplifier is connected to a power outlet, the **INPUT** indicator lights.

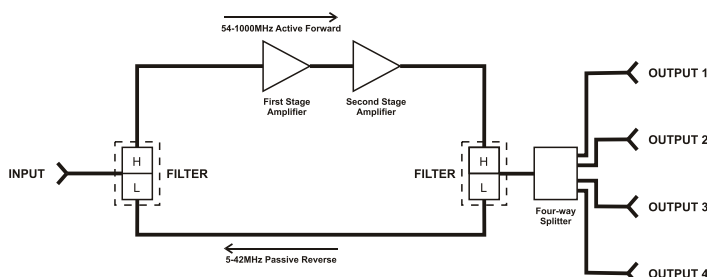
NOTE: You can also connect devices to the **OUT2**, **OUT3**, and **OUT4** jacks.

NOTE: This amplifier can be powered by DC current provided through the coaxial cable connection of certain components; however, not all components provide this DC current. If you do not receive power from your component, it will be necessary to power the amplifier with the included AC adapter.

Specifications

	5-42 MHz frequency	54-1000 MHz frequency
Gain	n.a.	4dB normal
Insertion loss	7dB normal	n.a.
Return loss	14dB minimum	14dB minimum
Noise figure	n.a.	7.5dB
Output level (3rd 60dB)	n.a.	93dB μ V

Impedance	75 ohm
Connector	F Female
Output	4 connectors
Power source	120V ~ 60Hz/12V
Dimensions	3.7 x 2.72 x 0.87 inches (94 x 69 x 22 mm)



One-year limited warranty

Visit www.rocketfishproducts.com for details

Contact Rocketfish: 1-800-620-2790

© 2009 Best Buy Enterprise Services, Inc. All rights reserved.

ENGLISH 09-0635

QUICK SETUP GUIDE