

2006 KOUNTRY STAR CLASS A

# 2006 KOUNTRY STAR

CLASS A

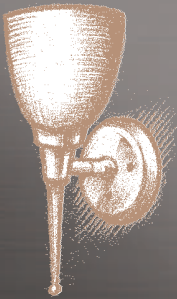
*by Newmar*





## Discover brilliance in the details.

---



What makes a Kountry Star shine is the extraordinary craftsmanship that goes into even the smallest of its features, inside and out. This helps define its elegance. You might think it also raises the price—until you shop and compare. With Newmar's innovative design, engineering and production, we're able to offer more top-quality amenities and detailing than you might ever have thought possible for the money. Then again, this is the kind of thing people trust Newmar for. It's our legacy to each new generation of RV enthusiasts.

*Richard E Parks*

Richard E. Parks

*President, Newmar Corporation*

# Kountry Star Class A

Live life in the moment.  
And live well.

Kountry Star is all about comfort. You'll see it and feel it in each of its amenities...in its thoughtful floorplans...and in its eye-catching design.

## Rest Easy

Kountry Star bedrooms offer a queen bed with a quilted headboard and comforter, a reverse sham and accent pillows. The rich cabinetry provides plenty of drawers and closet space. And there's even an additional storage area under the lift-up bed.

## Pullout Faucet

The kitchen sink's single-lever faucet has a pullout spout for easier use. The sink itself is undermounted and comes with flush-fitting solid-surface covers to match the countertop.





### Ultraleather Cirrus Recliner

Soft, Ultraleather Cirrus enhances the comfort of this plush swivel recliner, making it a perfect living-room lounge chair.



### Desk/Dinette

Our optional combination desk/flip-up dinette comes with two standard plushly upholstered sidechairs and two upholstered folding chairs.



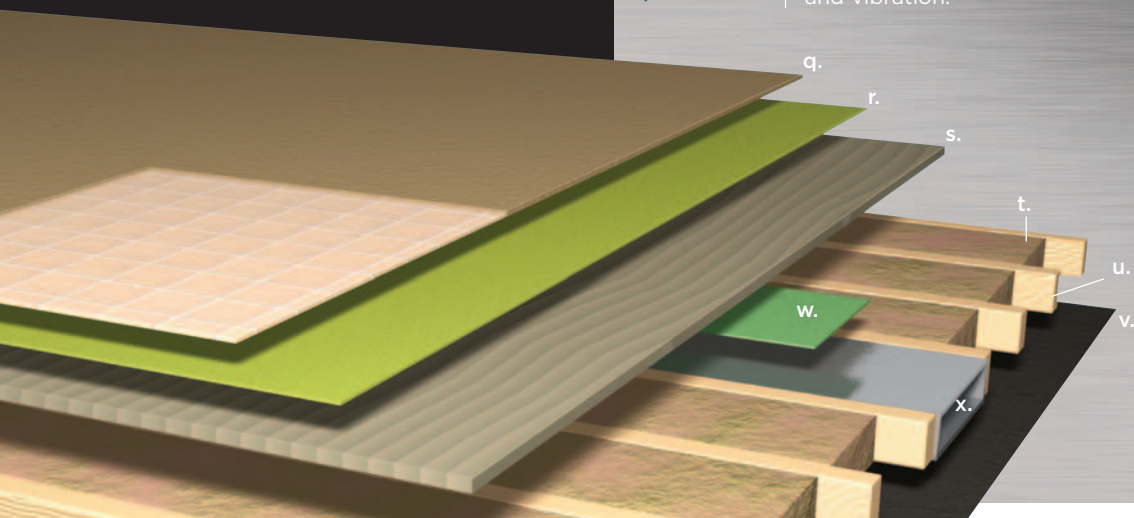
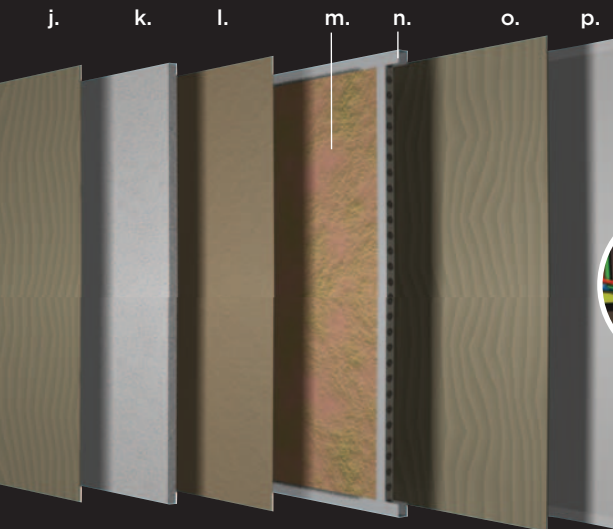
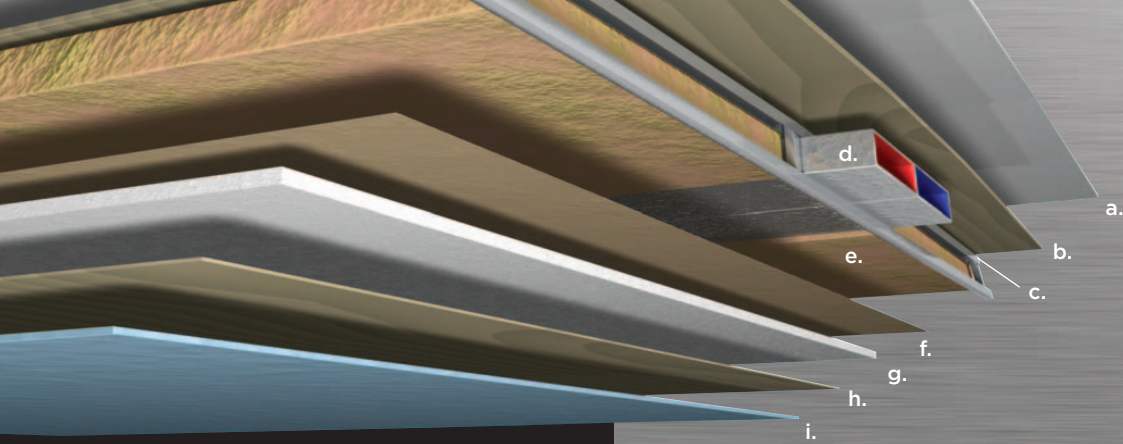
### Hide-a-Bed Sofa

This popular living-room option extends to provide extra sleeping accommodations. It also features a supportive, relaxing air mattress.

### Your Kountry Star Kitchen

Solid-surface countertops with a flip-up extension. Generous cabinet space. And upscale appliances, such as a recessed, three-burner range with piezo ignition and an optional 12-cubic-foot, four-door Norcold® refrigerator with a built-in icemaker and water dispenser. All contribute to making your Kountry Star kitchen the hub of a truly enriching RV lifestyle.





**Ceilings: R-value = 16**

- a. BriteTEK™ Roof
- b. 9 mm Wood Decking
- c. Aluminum Roof Truss
- d. A/C Ducting
- e. Fiberglass Batten Insulation
- f. Kraft Paper Vapor Barrier
- g. 5/8" Bead Foam
- h. 3/8" Panel
- i. Padded Vinyl Overlay

**Walls: R-value = 11**

- j. 3/8" Plywood Interior Wall
- k. 5/8" Bead Foam
- l. Kraft Paper Vapor Barrier
- m. Fiberglass Batten Insulation
- n. Aluminum Framing with 3/2" Header
- o. 3/8" Plywood Exterior Wall
- p. Composite One-piece Gelcoat Exterior Sidewall

**Flooring: R-value = 11**

- q. Carpet/Tile
- r. Carpet Padding
- s. 5/8" Floor Decking
- t. Fiberglass Batten Insulation
- u. 2" x 3" Wood Framing
- v. Polyethylene Moisture Barrier
- w. Foam Panels (Noise Reduction)
- x. Aluminum Ducting

**Protected C-channels**

To keep the electrical wiring that runs through holes in the aluminum-frame C-channels from chafing, each hole is ringed with a rubber grommet.

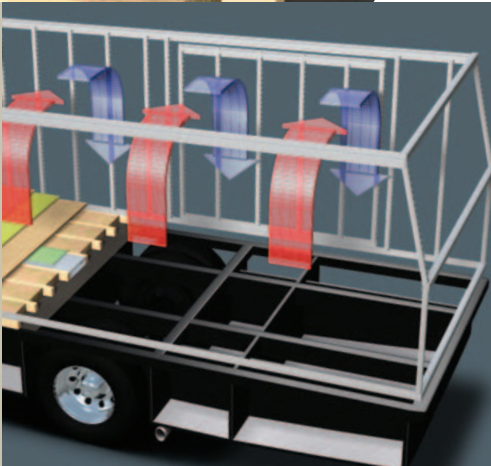


**Sikaflex®**

Used throughout Newmar construction, Sikaflex elastic adhesive is one of the strongest bonding agents on the market today. It also serves as a sealant against air and water. And it helps dampen both sound and vibration.

**Newmar Express Limited Warranty**

For your protection and peace of mind, we at Newmar back your Kountry Star Class A with one-year/unlimited-mileage warranty coverage: The Newmar Express Limited Warranty. Ask your dealer for an explanation and a copy of the warranty's complete terms.



**Newmar Total Comfort™ Central Air Conditioning**

Experience RV air conditioning just like that found in site-built homes. Newmar's Total Comfort Central Air Conditioning is actually two separate, fully ducted systems: one to distribute incoming cool air, the other to quickly and effectively remove warm air from every living area.

**16" On-center Framing**

Just like a fine site-built residential home, your Newmar home is framed 16 inches on center, which allows the best placement of outlets, switches and other components.



### Overhead TV

Convenient viewing from almost any position in the front living area is possible with this Sony® flatscreen color TV mounted in the overhead.



### Pass-through Storage

Stow all your favorite travel gear—from either side of the coach—in this huge exterior pass-through compartment. Side-hinged swing-out doors give you easy access.



### Mirror/Compass/Temperature

Need compass direction? Want the outdoor temp? They're right in front of you, electronically displayed in the optional rearview mirror. Controls are located at the bottom of the mirror frame.



### New Dash

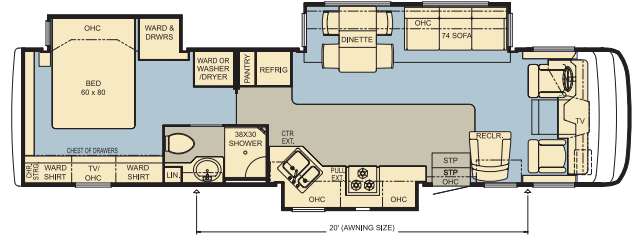
Our new dash configuration puts you in command more than ever. All gauges and controls are right where you need them, including a rearview monitoring system. The passenger side even has an extendable workstation.



# Kountry Star Class A Floorplans

We have a floor  
for every plan.

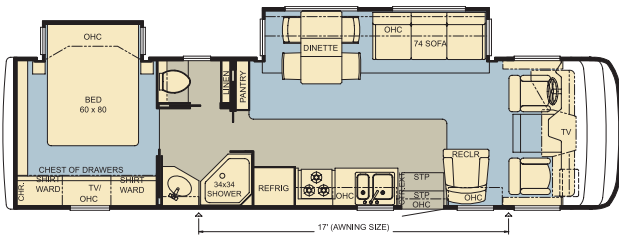
It's your life. Kountry Star lets you live it as you please.  
Choose the floorplan that best suits your needs, your  
hopes, your dreams. You've got plenty of options  
with Newmar.



**KSCA 3742**  
Options: K125, K276

Length: 37' 0"  
Width: 101.5"

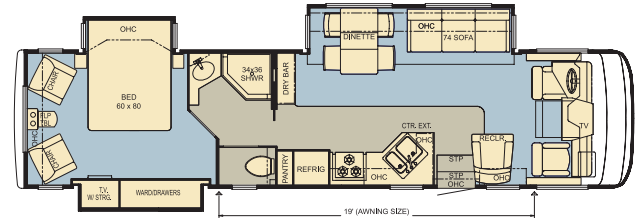
Unique Attributes:  
74" Sofa  
Recliner  
Extra Bedroom Storage



**KSCA 3302**  
Options: K125, K273

Length: 33' 5"  
Width: 101.5"

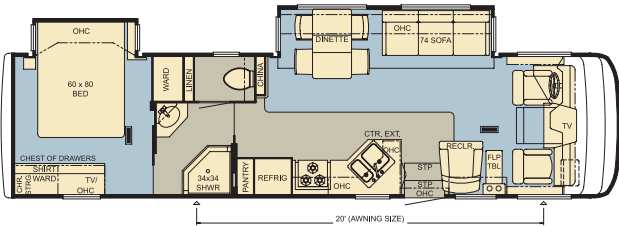
Unique Attributes:  
74" Sofa  
Hide-a-Leaf Dinette  
Pantry



**KSCA 3743**  
Options: K125, K276, K861

Length: 37' 0"  
Width: 101.5"

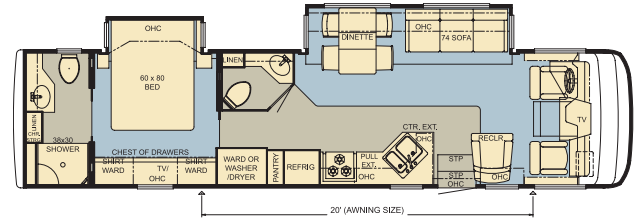
Unique Attributes:  
Dry Bar  
Sink and Stool Positioning  
Two Bedroom Chairs



**KSCA 3507**  
Options: K125, K276

Length: 35' 2"  
Width: 101.5"

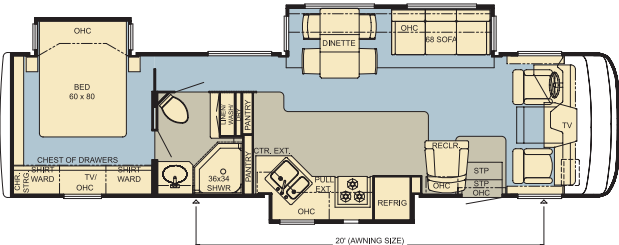
Unique Attributes:  
China Cabinet  
Hide-a-Leaf Dinette  
Recliner



**KSCA 3744**  
Options: K125, K276, K860

Length: 37' 0"  
Width: 101.5"

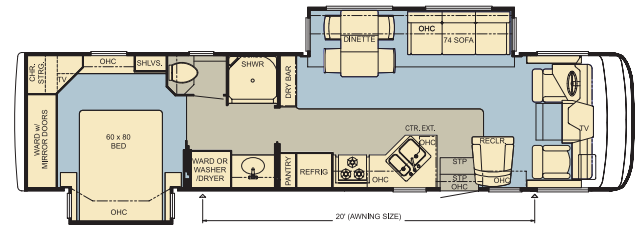
Unique Attributes:  
Recliner  
Two Bathrooms  
One-piece Washer and Dryer



**KSCA 3540**  
Options: K125, K276

Length: 35' 2"  
Width: 101.5"

Unique Attributes:  
68" Sofa  
Recliner  
Two Pantries



**KSCA 3778**  
Options: K125, K276

Length: 37' 0"  
Width: 101.5"

Unique Attributes:  
74" Sofa  
Extra Bedroom Storage  
One-piece Washer and Dryer

Carpet Vinyl Flooring





Beige Fieldstone



Metro Grey



Sahara Sand

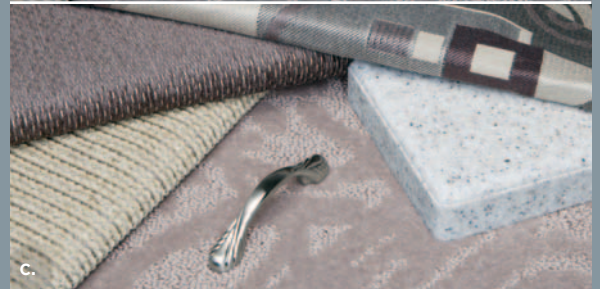
Some features shown in our literature are optional. Colors and finishes are photographic representations. The actual materials may look different. Prices, specifications and floorplans are subject to change at Newmar's discretion, without prior notice or obligation. Please see your dealer for actual samples and specifications.



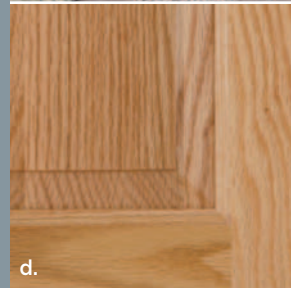
a.



b.



c.



d.



e.



f.

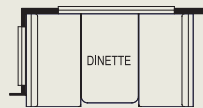
**Interior Colors**

- a. Beige Fieldstone
- b. Dove Grey
- c. Metro Plum

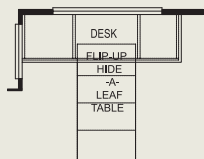
**Finishes and Woods**

- d. Oak Cabinetry, Standard
- e. Ericsburg Cherry Cabinetry
- f. Maple Cream Cabinetry

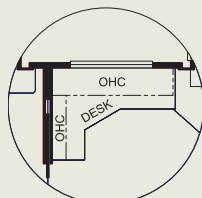
# Floorplan Options



**K276** Booth Dinette  
3507, 3540, 3742, 3743, 3744, 3778



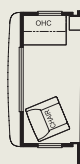
**K125** Combination Desk  
3302, 3507, 3540, 3742, 3743, 3744, 3778



**K860** Desk  
3744



**K273** Booth Dinette  
3302



**K861** Computer Center  
3743

## Full-Paint Masterpiece Finish™

Newmar's Full-Paint Masterpiece Finish creates an exterior of stunning beauty and incredible endurance—a true work of art. As industry leaders in applying full body paint to motorhome coaches, we at Newmar are pleased to offer the Full-Paint Masterpiece Finish as a Kountry Star Class A option.

## Diamond Shield

Diamond Shield Front Paint Protection Film is standard on all Kountry Star Class A's featuring the optional Full-Paint Masterpiece Finish. This film protects against stone chips, scratches and bug acids and keeps the Full-Paint Masterpiece Finish looking new.

# Features and Specifications

## STANDARD FEATURES

### CHASSIS FEATURES

- Workhorse™ Chassis
- Hydraulic Leveling Jacks with Touch Control
- Cruise Control
- Tilt Steering Wheel
- Stainless Steel Wheel Simulators

### AIR CONDITIONING & HEATING

- Two 13.5M Penguin™ Central Air Conditioners
- LP Furnace with In-floor Ducted Heat
- Dash Heater and High-output Air Conditioner
- LP Leak Detector

### APPLIANCES & ACCESSORIES

- Three-burner Recessed Range with Glass Oven Door and Piezo Ignition
- Solid-surface Range Cover
- Dometic® 8 Cu.Ft. Refrigerator
- Hardwood Raised-panel Refrigerator Front
- Spacemaker® Microwave Oven
- 10 Gal. Gas/Electric Water Heater with Direct-spark Ignition
- Sony® Flatscreen Color TV in Living Area
- Panasonic® Flatscreen Color TV in Bedroom
- AM/FM Dash Radio with Cassette and CD Player
- Sony Surround Sound System with AM/FM Radio, VCR, DVD Player and Subwoofer
- Rearview Monitor System
- TV Antenna with Power Booster and Two Interior Jacks
- Satellite Prep – Phone, TV Jack and Receptacle
- Exterior TV Jack on Door Side
- Telephone Connection with Phone Jacks in Living and Dash Area
- Two Bedroom Radio Speakers with On/Off Switch
- Cooler Located in Entrance-step Compartment
- Roof-mounted Trumpet Horn
- “TV Antenna is Up” Warning Light on Dash
- 10 Bc Fire Extinguisher, Carbon Monoxide and Smoke Detectors

### CABINETS & FURNITURE

- Oak Hardwood Raised-panel Arched Cabinet Doors
- Hidden-leaf Dinette Table with Four Chairs (Two Fixed, Two Folding)\*
- Solid-surface Countertop in Kitchen with Undermounted Acrylic Sink and Flush Sink Covers
- One-piece Molded Countertop in Bedroom with Integrated Bowl
- Drawers with Metal Guides
- Flexsteel® Furniture
- Ultraleather Cirrus Driver/Passenger Seats with Six-way Power, Power Lumbar and Ergo-Flex Arms
- Lifts on Bed Top to Access Storage Area
- Tufted Mattress with Quilted Bedspread

### ELECTRICAL FEATURES

- 6.5 kW Guardian® Generator with Remote Switch and Automatic Changeover
- 50 Amp Electrical Service with Flexible Cord
- Two 6 Volt House Batteries on Pullout Tray
- Battery Disconnect Switch
- 110 Volt Exterior Receptacle on Door Side
- 5 Watt Solar Panel
- 55 Amp Converter
- Daytime Headlight System
- Emergency Start Switch
- Exterior Security Lights, One on Each Side
- Fluorescent Lights Throughout
- Lighted Wardrobe
- Slideout Information Voice Module
- Manually Operated Hold-to-Run Slideout Switch
- ICC Light Switch
- Two 12 Volt Auxiliary Receptacles on Dashboard
- Interior Courtesy Lights

### EXTERIOR FEATURES

- Convex Exterior Mirrors with Remote Control, Defrost and Turn Signals
- Automatic Entrance Door with Triple Step
- Side-hinged Baggage Doors (Below Slideout Rooms, Between Axles)
- Lighted Exterior Storage Compartments Controlled by Interior Master Switch
- 5,000 Lb. Towing Hitch
- Lighted Acrylic Assist Handle at Entrance Door
- Rear Ladder
- Rear Protective Tow Guard with Stainless Steel Newmar Letters
- Undercoating

### INTERIOR FEATURES

- Padded Vinyl Ceiling
- Day/Night Pleated Window Shades and Lambrequins
- Mini-blinds in Kitchen and Bath Areas
- Hardwood/Fabric Fascia on Living Area and Bedroom Slideouts
- Vinyl Floor in Kitchen and Bathroom Areas
- Deluxe Carpeting with High-density Padding in Living Room and Bedroom
- Flat-panel Interior Passage Doors
- Interior Assist Handle at Main Entrance Door
- Sun Shades on Driver- and Passenger-side Windows

### PLUMBING & BATH FEATURES

- Sewage-hose Holder, Easy-access Flip-down Tray
- Sewage Holding-tank Rinse
- Water Heater Bypass System
- SeaLand™ 500+ China Stool
- Towel Bars, Tissue Holder and Robe Hook
- Towel Ladder on Hinged Bathroom Door Only
- Fiberglass Bathtub/Shower with Glass Door
- Monitor Panel
- Water Pump Switches Located in Bathroom, Above Entrance Door and on Exterior, Near Gate Valves
- Exterior Shower

### WINDOWS, AWNINGS & VENTS

- Double-pane Tinted Safety-glass Windows
- Fan-Tastic® Vent with Rain Sensor in Kitchen Area
- Power Vent with Wall Switch in Bathroom
- A&E® 9000 Side Awning
- A&E Slideout Awning Covers

## OPTIONAL FEATURES

### CHASSIS FEATURES

- Coated Aluminum Wheels

### AIR CONDITIONING & HEATING

- Two 13.5M Penguin™ Heat Pump Air Conditioners

### APPLIANCES & ACCESSORIES

- 30" Convection Microwave Oven with Three-burner Cooktop
- Dometic® 10 Cu.Ft. Refrigerator
- Norcold® 12 Cu.Ft. Four-door Refrigerator\*
- Norcold 12 Cu.Ft. Four-door Refrigerator with Icemaker and Water Dispenser
- Icemaker added to Refrigerator\*
- One-piece Washer/Dryer\*
- Washer/Dryer Prep\*
- Interior Rearview Mirror with Electronic Compass and Temperature Display
- SIRIUS® Satellite Radio Capability (Does Not Include Monthly Subscription)
- 10-disc CD Player
- CB Antenna

### CABINETS & FURNITURE

- Maple Cream Cabinets
- Ericsburg Cherry Cabinets
- Ultraleather Cirrus Swivel Rocker Recliner\*
- Ultraleather Cirrus Freestanding Swivel Rocker Recliner\*
- Ultraleather Cirrus Sofa\*
- Hide-a-Bed Sofa with Air Mattress\*
- Ultraleather Cirrus Hide-a-Bed Sofa with Air Mattress\*
- Booth Dinette with Forward-facing Seatbelts
- Desk in place of Stool Room\*
- Combination Desk/Dinette Table

### ELECTRICAL FEATURES

- 600 Watt Inverter for Living Area or Bedroom TV
- Solar Prep
- 7.5 kW Guardian® Generator
- 7.0 kW Onan® Generator
- Recessed Docking Lights

### EXTERIOR FEATURES

- Full-Paint Masterpiece Finish™ with Diamond Shield Front Protective Film

### INTERIOR FEATURES

- Simulated Plank Floor in Kitchen and Bath Area
- Simulated Marble Floor Tile in Kitchen and Bath Area
- Power-activated Sun Visors

### PLUMBING & BATH FEATURES

- Assist Handle in Tub/Shower
- Water Filter for Entire Unit
- 110 Volt Heat Pads for Holding Tanks

### WINDOWS, AWNINGS & VENTS

- A&E® 9000 Bedroom and Slideout Window Awning
- Fan-Tastic® Vent with Rain Sensor in Bathroom
- Rear Window (Single Pane)

\* Check with Dealership on floorplan availability.

## FLOORPLAN SPECIFICATIONS

FLOORPLAN	APP. OVERALL LENGTH <sup>1</sup>	WIDTH	APP. OVERALL HEIGHT	INTERIOR WIDTH	INTERIOR HEIGHT	GREY	SEWAGE	WATER	LP	FURNACE	WATER HEATER
KSCA 3302	33' 5"	101.5"	12' 6"	95.5"	84"	50 gal.	50 gal.	75 gal.	25 gal.	35,000 Btu	10 gal.
KSCA 3507	35' 2"	101.5"	12' 6"	95.5"	84"	50 gal.	50 gal.	75 gal.	25 gal.	35,000 Btu	10 gal.
KSCA 3540	35' 2"	101.5"	12' 6"	95.5"	84"	50 gal.	50 gal.	75 gal.	25 gal.	35,000 Btu	10 gal.
KSCA 3742	37' 0"	101.5"	12' 6"	95.5"	84"	50 gal.	50 gal.	75 gal.	25 gal.	42,000 Btu	10 gal.
KSCA 3743	37' 0"	101.5"	12' 6"	95.5"	84"	50 gal.	50 gal.	75 gal.	25 gal.	42,000 Btu	10 gal.
KSCA 3744	37' 0"	101.5"	12' 6"	95.5"	84"	50 gal.	50 gal.	75 gal.	25 gal.	42,000 Btu	10 gal.
KSCA 3778	37' 0"	101.5"	12' 6"	95.5"	84"	50 gal.	50 gal.	75 gal.	25 gal.	42,000 Btu	10 gal.

## WORKHORSE™ CHASSIS INFORMATION

FLOORPLAN	ENGINE HP	AXLE RATIO	FUEL CAP.	WHEEL BASE	FRONT GAWR <sup>2</sup>	REAR GAWR <sup>2</sup>	GVWR <sup>2</sup>	GCWR <sup>2</sup>	APP. UVW	APP. NCC
KSCA 3302	340	5.38	75 gal.	216"	8,500 lb.	14,500 lb.	22,000 lb.	26,000 lb.	18,572 lb.	3,428 lb.
KSCA 3507	340	5.38	75 gal.	242"	8,500 lb.	14,500 lb.	22,000 lb.	26,000 lb.	19,010 lb.	2,990 lb.
KSCA 3540	340	5.86	75 gal.	228"	9,000 lb.	15,500 lb.	24,000 lb.	30,000 lb.	19,790 lb.	4,210 lb.
KSCA 3742	340	5.86	75 gal.	242"	9,000 lb.	15,500 lb.	24,000 lb.	30,000 lb.	20,114 lb.	3,886 lb.
KSCA 3743	340	5.86	75 gal.	252"	9,000 lb.	15,500 lb.	24,000 lb.	30,000 lb.	19,933 lb.	4,067 lb.
KSCA 3744	340	5.86	75 gal.	242"	9,000 lb.	15,500 lb.	24,000 lb.	30,000 lb.	19,548 lb.	4,452 lb.
KSCA 3778	340	5.86	75 gal.	242"	9,000 lb.	15,500 lb.	24,000 lb.	30,000 lb.	19,447 lb.	4,553 lb.

Lengths, heights, widths and dry weights are approximate. Weight will vary based on optional equipment added to the above base weight.

GAWR: Gross Axle Weight Rating is the maximum permissible weight for an axle.

GVWR: Gross Vehicle Weight Rating is the maximum permissible weight of a fully loaded motorhome.

GCWR: Gross Combination Weight Rating is the value specified by the manufacturer of the vehicle as the maximum allowable loaded weight of this motorhome and any towed trailer or towed vehicle.

UVW: Unloaded Vehicle Weight is the weight of this motorhome as built at the factory with full fuel, engine oil and coolants. The UVW does not include cargo, fresh water, LP gas or dealer-installed accessories.

NCC: Net Carrying Capacity is the maximum weight of all occupants, including the driver, personal belongings, food, fresh water, waste water, LP gas, tools, tongue weight of towed vehicle, dealer-installed accessories, etc., that can be carried by the motorhome.

<sup>1</sup> Lengths do not include rear ladder.

<sup>2</sup> Specifications are supplied by chassis manufacturer.

Our commitment is to provide you a recreational vehicle of the highest quality. These are some of the top manufacturers who help us fulfill this commitment by supplying us with superior components.

**SONY**

[www.sony.com](http://www.sony.com)

**DIAMOND SHIELD**

[www.diamond-shield.com](http://www.diamond-shield.com)



## NEWMAR CONSTRUCTION

*Built to last*



## NEWMAR SERVICE

*Only one call*



NEWMAR QUALITY: A WAY OF LIFE

### The RVDA Quality Circle Award



For the fourth year in a row, Newmar has won the RVDA's Quality Circle Award, a reflection of feedback obtained from the association's annual dealer satisfaction survey. This is quite an honor — a measure of the trust our dealers and customers place in us. We will continue working to retain that trust.

### The Newmar Factory Tour

We would love to have you visit our state-of-the-art production facility in Nappanee, Indiana. That's why we offer factory tours Monday through Friday at 10 a.m. and 1 p.m., Indiana time. Pre-registration is not required but helpful, and certain safety restrictions do apply. For more information, or to pre-register, please call 800-860-0086.

Your Official Newmar Dealer:

### Newmar Corporation

355 N Delaware St  
PO Box 30  
Nappanee IN 46550-0030  
574-773-7791 Fax 574-773-2895  
[www.newmarcorp.com](http://www.newmarcorp.com)