

EW-7428HCn



Quick Installation Guide

02-2013 / v1.1



PRODUCT INTRODUCTION

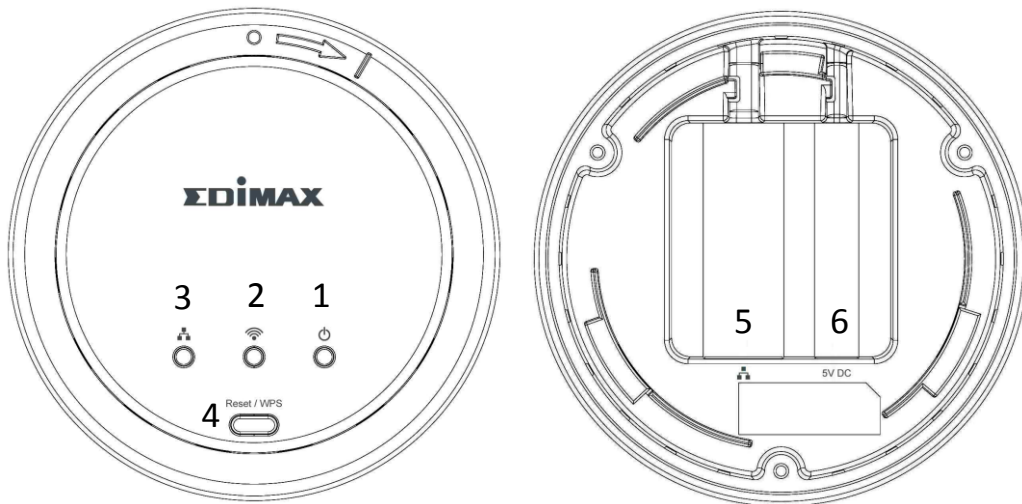
Thank you for purchasing the Edimax EW-7428HCn N300 High Power Ceiling Mount Wireless PoE Range Extender/Access Point! This device is an ideal choice for users looking to expand their home or office networking environment. Its easy installation procedure also allows any computer user to set up a network environment in a matter of minutes.

Package Contents


Before you start using this device, please check if there is anything missing in the package, and contact your dealer to claim the missing item(s):



- Ceiling mount range extender/access point (1 pcs)
- Quick installation guide (1 pcs)
- CD with multi-language QIG and user manual (1 pcs)
- Power adapter (1 pcs)
- Ethernet cable (1 pcs)
- Mounting kit (1 pcs)
- Access key card (1 pcs)

Physical Description



Front Panel

LED	Light Status	Description
 (1)Power	On	Device correctly powered and initialized
	Off	Device not powered or not correctly powered, or device not yet initialized


 (2)Wi-Fi	On	WPS is activated and the device is waiting for a WPS signal from another device
	Flashing	Wi-Fi activity (transferring data)
 (3)LAN	On	Connected to a local area network
	Off	Not connected to a local area network
	Flashing	LAN activity (transferring data)

Item	Function	Description
(4)Reset/ WPS	WPS	Press and hold this button for 2 seconds to activate WPS mode, during which this device will attempt to automatically connect to a WPS-enabled client device.
	Reset	To reset the device to factory default settings, press and hold the button for 10 seconds, until the Power LED starts flashing. Release the button to initiate reset procedures.



Note: Please note that the hardware WPS button only works when connecting to wireless clients. It will have no effect when the device itself is in Wireless Client Mode.

Back Panel

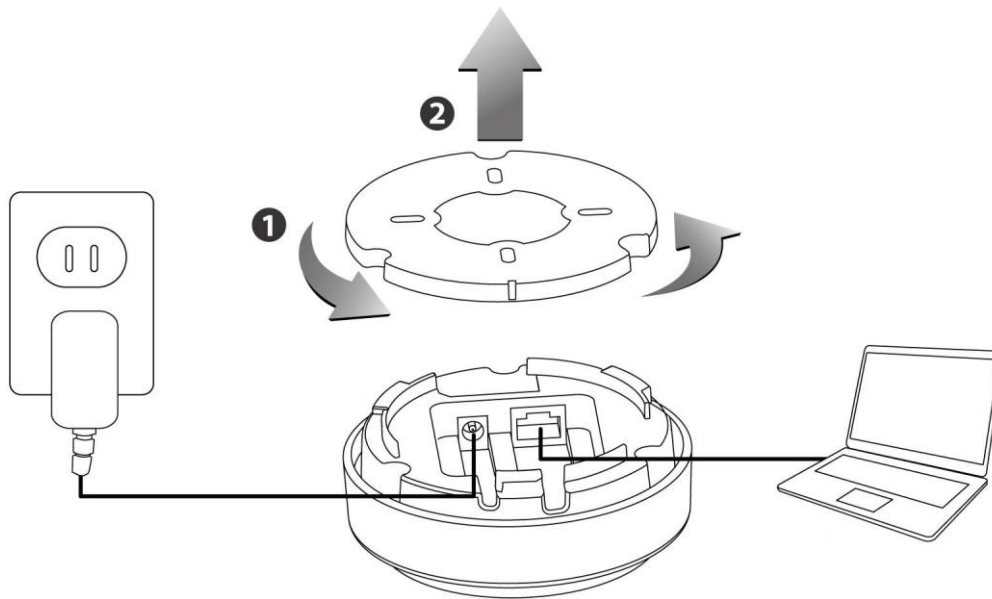
Item Name	Description
 (5) LAN Port	Connects to an Ethernet cable. This device is capable of Power over Ethernet (PoE), so if the cable is connected to a PoE switch, then this device will be powered by the Ethernet cable alone.
(6) 5V DC	Connects to the power adapter.



Note: Please do not connect the power adapter if the device is already connected to a PoE switch via the LAN port.

GETTING STARTED

1. Carefully remove the back panel cover by twisting it counter-clockwise. This enables easier access to the LAN port and the power adapter.
2. Plug one end of an Ethernet cable into the device's Ethernet port, plug the other end into your computer's Ethernet port.
3. Plug the power adapter into a wall socket, then connect it to the 5V DC power port.

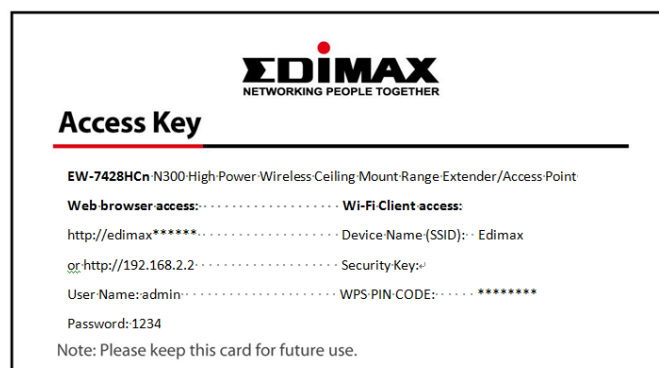


4. The device will begin to initialize. After 30 seconds, the power LED will turn on, which indicates the device has completed its initialization.



Note: Make sure that your computer is set as a DHCP client. If you are unsure, please see the user manual on the enclosed CD for more information.

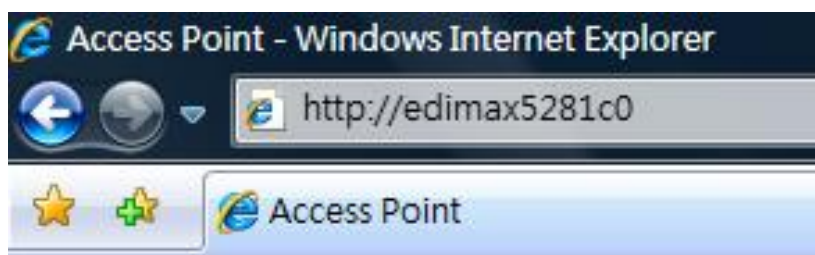
5. Enclosed in the product box is an Access Key card, containing a URL to access the device's browser-based configuration interface, similar to the example below.





Note: The URL on your card will likely differ from the example shown in this guide. Please enter the URL you see on your card, and not the URL used in the examples here.

6. Open a web browser. **For Windows users**, enter the access key or default IP address (http://192.168.2.2) into the browser URL bar.



For Mac and Linux users, enter the default IP address (http://192.168.2.2) into the browser URL bar.



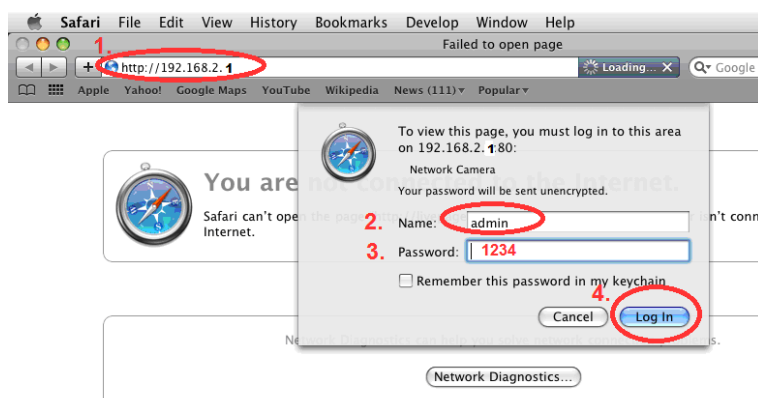
Note: The access key is only supported by Windows. For Mac and Linux, please use the default IP address as an alternative.

7. You will be prompted to enter a username and password. The default username is **admin**, and the default password is **1234**.

Windows




Mac




8. You will then enter the iQ Setup screen, where you can choose which mode to activate.

iQ Setup


Please select the operation mode of your device. If you would like to set other operation modes, please select "Setup Manually".



Access Point Mode:
Allows wireless clients to connect to access point and exchange data with the devices which are connected to the wired network.



Universal Wi-Fi Extender Mode:
Connect to a Root AP and service all wireless clients within its coverage.



Wireless Client Mode:
Enable the Ethernet device such as TV and Game player connected to the access point to a wireless client.

[Setup Manually](#)

The default mode for the device is Access Point Mode. For Universal Wi-Fi Extender Mode and Wireless Client Mode, please refer to the user manual in the enclosed CD.

Access Point Mode

Access Point Mode allows the device to broadcast a wireless Internet signal, which your wireless devices – such as a notebook computer, a smartphone, or a tablet computer – can connect to.

1. Select Access Point Mode from the iQ Setup list.
2. You will be asked if you want to change the login information for this device. For now, simply click 'NEXT' without changing anything. You will later have an opportunity to change this in the browser-based setup, should you wish.

Access Point Mode Settings

If you wish to customize the login information for your Access Point, please enter the new user name and password in the following columns.

Username	<input type="text" value="admin"/>
New Password	<input type="password"/>
Re-Enter Password	<input type="password"/>

[NEXT](#)



Note: If you changed the username and password in this step, you will be prompted to relogin. Enter the new information into the login prompt.

- You will be prompted to set the device's access point settings. If you want to, you can give the device an ID in the 'Device Name' field, and if you want to set a Wi-Fi password, select 'Enabled' from the drop-down menu and enter your desired password in the 'Wi-Fi Network Password field'. Otherwise, if you keep the default settings, the device's wireless network will have the default ID of '**Edimax**' and will use no password.

Access Point Mode Settings

Band	2.4 GHz (B+G+N) ▼
Device Name	Edimax
Channel Number	11 ▼
Wi-Fi Network Password	Disabled ▼
<input checked="" type="radio"/> Obtain an IP address automatically <input type="radio"/> Use the following IP address	



Note: If the device is not set to "Obtain an IP address automatically", then please select that option by clicking on the radio button circled in the above image.

- Click 'APPLY' when you are done. You will see a confirmation screen, with your Wi-Fi settings.

Settings saved successfully!

Please click APPLY to restart the system and make the changes take effect.

Device Name : **Edimax**

Security Key : **Disable**

- Click 'APPLY' and the device will save settings and restart. When it has finished, you will see a final congratulations screen.

Congratulation! Your device is established!

Device Name : **Edimax**

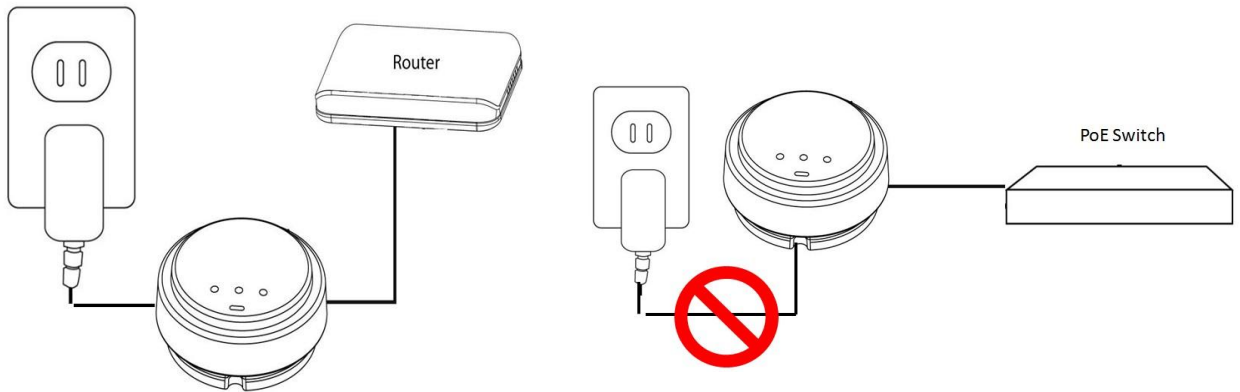
Security Key : **Disable**

Hardware Installation

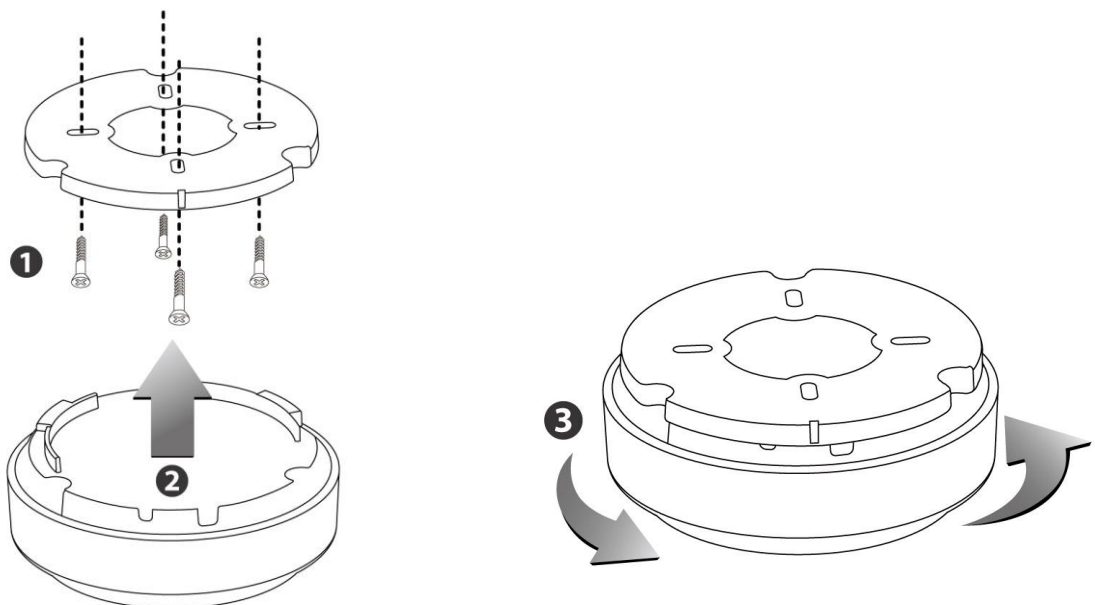
1. Unplug the Ethernet cable from your computer and the device.
2. Plug one end of an Ethernet cable into the Ethernet port on the device. Plug the other end of the cable into a LAN port on a router or switch.



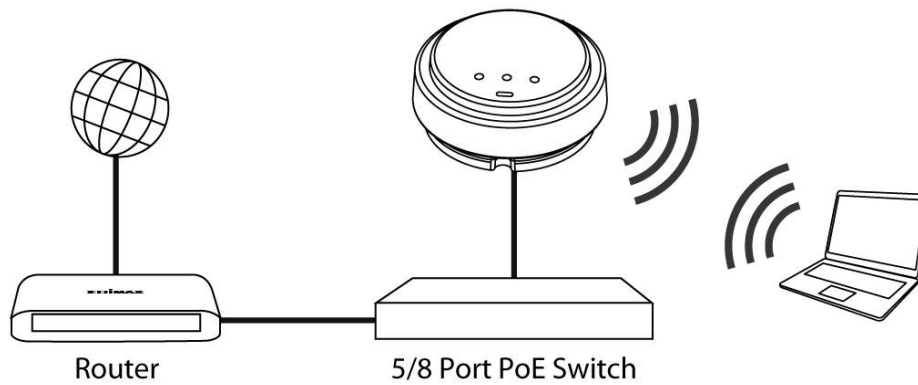
Note: If you are using a Power over Ethernet (PoE) switch, then it is not necessary to provide power through the 5V adapter. Therefore, if you are using a PoE switch, unplug the power cable from the 5V adapter port. If you are not using a PoE switch, then the device must draw power from the 5V power cable.



3. To attach the device to the ceiling in its final location, attach the device's back panel to the ceiling with the included screws (mounting kit). Then, attach the rest of the device to the back panel, twisting it clockwise to lock it into place.



4. You may now connect to the device wirelessly by selecting its ID from your list of Wi-Fi networks, and entering the password you set (if you set one). However, remember that for the device to function as a wireless access point, it must connect to the root router or switch with an Ethernet cable.



Federal Communication Commission Interference Statement

This equipment has been tested and found to comply with the limits for a Class B digital device, pursuant to Part 15 of FCC Rules. These limits are designed to provide reasonable protection against harmful interference in a residential installation. This equipment generates, uses, and can radiate radio frequency energy and, if not installed and used in accordance with the instructions, may cause harmful interference to radio communications. However, there is no guarantee that interference will not occur in a particular installation. If this equipment does cause harmful interference to radio or television reception, which can be determined by turning the equipment off and on, the user is encouraged to try to correct the interference by one or more of the following measures:

1. Reorient or relocate the receiving antenna.
2. Increase the separation between the equipment and receiver.
3. Connect the equipment into an outlet on a circuit different from that to which the receiver is connected.
4. Consult the dealer or an experienced radio technician for help.

FCC Caution

This device and its antenna must not be co-located or operating in conjunction with any other antenna or transmitter. This device complies with Part 15 of the FCC Rules. Operation is subject to the following two conditions: (1) this device may not cause harmful interference, and (2) this device must accept any interference received, including interference that may cause undesired operation. Any changes or modifications not expressly approved by the party responsible for compliance could void the authority to operate equipment.

Federal Communications Commission (FCC) Radiation Exposure Statement

This equipment complies with FCC radiation exposure set forth for an uncontrolled environment. In order to avoid the possibility of exceeding the FCC radio frequency exposure limits, human proximity to the antenna shall not be less than 2.5cm (1 inch) during normal operation.

Federal Communications Commission (FCC) RF Exposure Requirements

SAR compliance has been established in the laptop computer(s) configurations with PCMCIA slot on the side near the center, as tested in the application for certification, and can be used in laptop computer(s) with substantially similar physical dimensions, construction, and electrical and RF characteristics. Use in other devices such as PDAs or lap pads is not authorized. This transmitter is restricted for use with the specific antenna tested in the application for certification. The antenna(s) used for this transmitter must not be co-located or operating in conjunction with any other antenna or transmitter.

R&TTE Compliance Statement

This equipment complies with all the requirements of DIRECTIVE 1999/5/EC OF THE EUROPEAN PARLIAMENT AND THE COUNCIL of March 9, 1999 on radio equipment and telecommunication terminal equipment and the mutual recognition of their conformity (R&TTE). The R&TTE Directive repeals and replaces in the directive 98/13/EEC (Telecommunications Terminal Equipment and Satellite Earth Station Equipment) As of April 8, 2000.

Safety

This equipment is designed with the utmost care for the safety of those who install and use it. However, special attention must be paid to the dangers of electric shock and static electricity when working with electrical equipment. All guidelines of this and of the computer manufacture must therefore be allowed at all times to ensure the safe use of the equipment.

EU Countries Intended for Use

The ETSI version of this device is intended for home and office use in Austria, Belgium, Bulgaria, Cyprus, Czech, Denmark, Estonia, Finland, France, Germany, Greece, Hungary, Ireland, Italy, Latvia, Lithuania, Luxembourg, Malta, Netherlands, Poland, Portugal, Romania, Slovakia, Slovenia, Spain, Sweden, Turkey, and United Kingdom. The ETSI version of this device is also authorized for use in EFTA member states: Iceland, Liechtenstein, Norway, and Switzerland.

EU Countries Not Intended for Use

None

EU Declaration of Conformity

English:	This equipment is in compliance with the essential requirements and other relevant provisions of Directive 1999/5/EC, 2009/125/EC.
French:	Cet équipement est conforme aux exigences essentielles et autres dispositions de la directive 1999/5/CE, 2009/125/CE
Czechian:	Toto zařízení je v souladu se základními požadavky a ostatními příslušnými ustanoveními směrnic 1999/5/ES, 2009/125/ES.
Polish:	Urządzenie jest zgodne z ogólnymi wymaganiami oraz szczególnymi warunkami określonymi Dyrektywą UE 1999/5/EC, 2009/125/EC
Romanian:	Acest echipament este în conformitate cu cerințele esențiale și alte prevederi relevante ale Directivei 1999/5/CE, 2009/125/CE.
Russian:	Это оборудование соответствует основным требованиям и положениям Директивы 1999/5/EC, 2009/125/EC.
Magyar:	Ez a berendezés megfelel az alapvető követelményeknek és más vonatkozó irányelveknek (1999/5/EK, 2009/125/EC)
Türkçe:	Bu cihaz 1999/5/EC, 2009/125/EC direktifleri zorunlu istekler ve diğer hükümlerle ile uyumludur.
Ukrainian:	Обладнання відповідає вимогам і умовам директиви 1999/5/EC, 2009/125/EC.
Slovakian:	Toto zariadenie spĺňa základné požiadavky a ďalšie príslušné ustanovenia smerníc 1999/5/ES, 2009/125/ES.
German:	Dieses Gerät erfüllt die Voraussetzungen gemäß den Richtlinien 1999/5/EC, 2009/125/EC.
Spanish:	El presente equipo cumple los requisitos esenciales de la Directiva 1999/5/EC, 2009/125/EC.
Italian:	Questo apparecchio è conforme ai requisiti essenziali e alle altre disposizioni applicabili della Direttiva 1999/5/CE, 2009/125/CE.
Dutch:	Dit apparaat voldoet aan de essentiële eisen en andere van toepassing zijnde bepalingen van richtlijn 1999/5/EC, 2009/125/EC.
Portuguese:	Este equipamento cumpre os requisitos essenciais da Directiva 1999/5/EC, 2009/125/EC
Norwegian:	Dette utstyret er i samsvar med de viktigste kravene og andre relevante regler i Direktiv 1999/5/EC, 2009/125/EC.
Swedish:	Denna utrustning är i överensstämmelse med de väsentliga kraven och övriga relevanta bestämmelser i direktiv 1999/5/EG, 2009/125/EG.
Danish:	Dette udstyr er i overensstemmelse med de væsentligste krav og andre relevante forordninger i direktiv 1999/5/EC, 2009/125/EC.
Finnish:	Tämä laite täyttää direktiivien 1999/5/EY, 2009/125/EY oleelliset vaatimukset ja muut asiaankuuluvat määräykset.

FOR USE IN

AT	BE	CY	CZ	DK	EE	FI	FR
DE	GR	HU	IE	IT	LV	LT	LU
MT	NL	PL	PT	SK	SI	ES	SE
GB	IS	LI	NO	CH	BG	RO	TR



N20379



WEEE Directive & Product Disposal



At the end of its serviceable life, this product should not be treated as household or general waste. It should be handed over to the applicable collection point for the recycling of electrical and electronic equipment, or returned to the supplier for disposal.

Declaration of Conformity

We, Edimax Technology Co., LTD., declare under our sole responsibility, that the equipment described below complies with the requirements of the European R&TTE directive (1999/5/EC).

Equipment: N300 High Power Wireless Ceiling Mount Range
Extender/Access Point

Model No.: EW-7428HCn

Report No.: ER222113, EH222113, EA222113, L222113L136

The following European standards for essential requirements have been followed:

Spectrum: ETSI EN 300 328 V1.7.1 (2006-10);

EN 301 489-1 V1.9.2 (2011-09)

EN 301 489-17 V2.1.1 (2009-05);

EMF: EN 50385:2002

Safety (LVD): IEC 60950-1:2005 (2nd Edition); Am 1:2009

EN-60950-1:2006+A11:2009+A1:2010+A12:2011

Edimax Technology Co., Ltd.
No. 3, Wu Chuan 3rd Road,
Wu-Ku Industrial Park,
New Taipei City, Taiwan



Date of Signature: July 6th, 2012

Signature:

A handwritten signature in black ink, appearing to read 'Albert Chang'.

Printed Name:

Albert Chang

Title:

Director

Edimax Technology CO., LTD.

Notice according to GNU/GPL-Version 2/ Hinweis gemäß der GNU/GPL-Version 2

This product includes software that is subject to the GNU/GPL-Version 2. The program is free software and distributed without any warranty of the author. We offer, valid for at least three years, to give you, for a charge no more than the costs of physically performing source distribution, a complete machine-readable copy of the corresponding source code.

Das Produkt beinhaltet Software, die den Bedingungen der GNU/GPL-Version 2 unterliegt. Das Programm ist eine sog. „Free Software“, der Autor stellt das Programm ohne irgendeine Gewährleistungen zur Verfügung. Wir bieten Ihnen für einen Zeitraum von drei Jahren an, eine vollständige maschinenlesbare Kopie des Quelltextes der Programme zur Verfügung zu stellen – zu nicht höheren Kosten als denen, die durch den physikalischen Kopiervorgang anfallen.

[GNU GENERAL PUBLIC LICENSE](#)

Version 2, June 1991

Copyright (C) 1989, 1991 Free Software Foundation, Inc.
51 Franklin Street, Fifth Floor, Boston, MA 02110-1301, USA

Everyone is permitted to copy and distribute verbatim copies of this license document, but changing it is not allowed.

[Preamble](#)

The licenses for most software are designed to take away your freedom to share and change it. By contrast, the GNU General Public License is intended to guarantee your freedom to share and change free software--to make sure the software is free for all its users. This General Public License applies to most of the Free Software Foundation's software and to any other program whose authors commit to using it. (Some other Free Software Foundation software is covered by the GNU Lesser General Public License instead.) You can apply it to your programs, too.

When we speak of free software, we are referring to freedom, not price. Our General Public Licenses are designed to make sure that you have the freedom to distribute copies of free software (and charge for this service if you wish), that you receive source code or can get it if you want it, that you can change the software or use pieces of it in new free programs; and that you know you can do these things.

To protect your rights, we need to make restrictions that forbid anyone to deny you these rights or to ask you to surrender the rights. These restrictions translate to certain responsibilities for you if you distribute copies of the software, or if you modify it.

For example, if you distribute copies of such a program, whether gratis or for a fee, you must give the recipients all the rights that you have. You must make sure that they, too, receive or can get the source code. And you must show them these terms so they know their rights.

We protect your rights with two steps: (1) copyright the software, and (2) offer you this license which gives you legal permission to copy, distribute and/or modify the software.

Also, for each author's protection and ours, we want to make certain that everyone understands that there is no warranty for this free software. If the software is modified by someone else and passed on, we want its recipients to know that what they have is not the original, so that any problems introduced by others will not reflect on the original authors' reputations.

Finally, any free program is threatened constantly by software patents. We wish to avoid the danger that redistributors of a free program will individually obtain patent licenses, in effect making the program proprietary. To prevent this, we have made it clear that any patent must be licensed for everyone's free use or not licensed at all.

The precise terms and conditions for copying, distribution and modification follow.

[TERMS AND CONDITIONS FOR COPYING, DISTRIBUTION AND MODIFICATION](#)

0. This License applies to any program or other work which contains a notice placed by the copyright holder saying it may be distributed under the terms of this General Public License. The "Program", below, refers to any such program or work, and a "work based on the Program" means either the Program or any derivative work under copyright law: that is to say, a work containing the Program or a portion of it, either verbatim or with modifications and/or translated into another language. (Hereinafter, translation is included without limitation in the term "modification".) Each licensee is addressed as "you".

Activities other than copying, distribution and modification are not covered by this License; they are outside its scope. The act of running the Program is not restricted, and the output from the Program is covered only if its contents constitute a work based on the Program (independent of having been made by running the Program). Whether that is true depends on what the Program does.

1. You may copy and distribute verbatim copies of the Program's source code as you receive it, in any medium, provided that you conspicuously and appropriately publish on each copy an appropriate copyright notice and disclaimer of warranty; keep intact all the notices that refer to this License and to the absence of any warranty; and give any other recipients of the Program a copy of this License along with the Program.

You may charge a fee for the physical act of transferring a copy, and you may at your option offer warranty protection in exchange for a fee.

2. You may modify your copy or copies of the Program or any portion of it, thus forming a work based on the Program, and copy and distribute such modifications or work under the terms of Section 1 above, provided that you also meet all of these conditions:

- a) You must cause the modified files to carry prominent notices stating that you changed the files and the date of any change.
- b) You must cause any work that you distribute or publish, that in whole or in part contains or is derived from the Program or any part thereof, to be licensed as a whole at no charge to all third parties under the terms of this License.
- c) If the modified program normally reads commands interactively when run, you must cause it, when started running for such interactive use in the most ordinary way, to print or display an announcement including an appropriate copyright notice and a notice that there is no warranty (or else, saying that you provide a warranty) and that users may redistribute the program under these conditions, and telling the user how to view a copy of this License. (Exception: if the Program itself is interactive but does not normally print such an announcement, your work based on the Program is not required to print an announcement.)

These requirements apply to the modified work as a whole. If identifiable sections of that work are not derived from the Program, and can be reasonably considered independent and separate works in themselves, then this License, and its terms, do not apply to those sections when you distribute them as separate works. But when you distribute the same sections as part of a whole which is a work based on the Program, the distribution of the whole must be on the terms of this License, whose permissions for other licensees extend to the entire whole, and thus to each and every part regardless of who wrote it.

Thus, it is not the intent of this section to claim rights or contest your rights to work written entirely by you; rather, the intent is to exercise the right to control the distribution of derivative or collective works based on the Program.

In addition, mere aggregation of another work not based on the Program with the Program (or with a work based on the Program) on a volume of a storage or distribution medium does not bring the other work under the scope of this License.

3. You may copy and distribute the Program (or a work based on it, under Section 2) in object code or executable form under the terms of Sections 1 and 2 above provided that you also do one of the following:

- a) Accompany it with the complete corresponding machine-readable source code, which must be distributed under the terms of Sections 1 and 2 above on a medium customarily used for software interchange; or,
- b) Accompany it with a written offer, valid for at least three years, to give any third party, for a charge no more than your cost of physically performing source distribution, a complete machine-readable copy of the corresponding source code, to be distributed under the terms of Sections 1 and 2 above on a medium customarily used for software interchange; or,
- c) Accompany it with the information you received as to the offer to distribute corresponding source code. (This alternative is allowed only for noncommercial distribution and only if you received the program in object code or executable form with such an offer, in accord with Subsection b above.)

The source code for a work means the preferred form of the work for making modifications to it. For an executable work, complete source code means all the source code for all modules it contains, plus any associated interface definition files, plus the scripts used to control compilation and installation of the executable. However, as a special exception, the source code distributed need not include anything that is normally distributed (in either source or binary form) with the major components (compiler, kernel, and so on) of the operating system on which the executable runs, unless that component itself accompanies the executable.

If distribution of executable or object code is made by offering access to copy from a designated place, then offering equivalent access to copy the source code from the same place counts as distribution of the source code, even though third parties are not compelled to copy the source along with the object code.

4. You may not copy, modify, sublicense, or distribute the Program except as expressly provided under this License. Any attempt otherwise to copy, modify, sublicense or distribute the Program is void, and will automatically terminate your rights under this License. However, parties who have received copies, or rights, from you under this License will not have their licenses terminated so long as such parties remain in full compliance.

5. You are not required to accept this License, since you have not signed it. However, nothing else grants you permission to modify or distribute the Program or its derivative works. These actions are prohibited by law if you do not accept this License. Therefore, by modifying or distributing the Program (or any work based on the Program), you indicate your acceptance of this License to do so, and all its terms and conditions for copying, distributing or modifying the Program or works based on it.

6. Each time you redistribute the Program (or any work based on the Program), the recipient automatically receives a license from the original licensor to copy, distribute or modify the Program subject to these terms and conditions. You may not impose any further restrictions on the recipients' exercise of the rights granted herein. You are not responsible for enforcing compliance by third parties to this License.

7. If, as a consequence of a court judgment or allegation of patent infringement or for any other reason (not limited to patent issues), conditions are imposed on you (whether by court order, agreement or otherwise) that contradict the conditions of this License, they do not excuse you from the conditions of this License. If you cannot distribute so as to satisfy simultaneously your obligations under this License and any other pertinent obligations, then as a consequence you may not distribute the Program at all. For example, if a patent license would not permit royalty-free redistribution of the Program by all those who receive copies directly or indirectly through you, then the only way you could satisfy both it and this License would be to refrain entirely from distribution of the Program.

If any portion of this section is held invalid or unenforceable under any particular circumstance, the balance of the section is intended to apply and the section as a whole is intended to apply in other circumstances.

It is not the purpose of this section to induce you to infringe any patents or other property right claims or to contest validity of any such claims; this section has the sole purpose of protecting the integrity of the free software distribution system, which is implemented by public license practices. Many people have made generous contributions to the wide range of software distributed through that system in reliance on consistent application of that system; it is up to the author/donor to decide if he or she is willing to distribute software through any other system and a licensee cannot impose that choice.

This section is intended to make thoroughly clear what is believed to be a consequence of the rest of this License.

8. If the distribution and/or use of the Program is restricted in certain countries either by patents or by copyrighted interfaces, the original copyright holder who places the Program under this License may add an explicit geographical distribution limitation excluding those countries, so that distribution is permitted only in or among countries not thus excluded. In such case, this License incorporates the limitation as if written in the body of this License.

9. The Free Software Foundation may publish revised and/or new versions of the General Public License from time to time. Such new versions will be similar in spirit to the present version, but may differ in detail to address new problems or concerns.

Each version is given a distinguishing version number. If the Program specifies a version number of this License which applies to it and "any later version", you have the option of following the terms and conditions either of that version or of any later version published by the Free Software Foundation. If the Program does not specify a version number of this License, you may choose any version ever published by the Free Software Foundation.

10. If you wish to incorporate parts of the Program into other free programs whose distribution conditions are different, write to the author to ask for permission. For software which is copyrighted by the Free Software Foundation, write to the Free Software Foundation; we sometimes make exceptions for this. Our decision will be guided by the two goals of preserving the free status of all derivatives of our free software and of promoting the sharing and reuse of software generally.

NO WARRANTY

11. BECAUSE THE PROGRAM IS LICENSED FREE OF CHARGE, THERE IS NO WARRANTY FOR THE PROGRAM, TO THE EXTENT PERMITTED BY APPLICABLE LAW. EXCEPT WHEN OTHERWISE STATED IN WRITING THE COPYRIGHT HOLDERS AND/OR OTHER PARTIES PROVIDE THE PROGRAM "AS IS" WITHOUT WARRANTY OF ANY KIND, EITHER EXPRESSED OR IMPLIED, INCLUDING, BUT NOT LIMITED TO, THE IMPLIED WARRANTIES OF MERCHANTABILITY AND FITNESS FOR A PARTICULAR PURPOSE. THE ENTIRE RISK AS TO THE QUALITY AND PERFORMANCE OF THE PROGRAM IS WITH YOU. SHOULD THE PROGRAM PROVE DEFECTIVE, YOU ASSUME THE COST OF ALL NECESSARY SERVICING, REPAIR OR CORRECTION.

12. IN NO EVENT UNLESS REQUIRED BY APPLICABLE LAW OR AGREED TO IN WRITING WILL ANY COPYRIGHT HOLDER, OR ANY OTHER PARTY WHO MAY MODIFY AND/OR REDISTRIBUTE THE PROGRAM AS PERMITTED ABOVE, BE LIABLE TO YOU FOR DAMAGES, INCLUDING ANY GENERAL, SPECIAL, INCIDENTAL OR CONSEQUENTIAL DAMAGES ARISING OUT OF THE USE OR INABILITY TO USE THE PROGRAM (INCLUDING BUT NOT LIMITED TO LOSS OF DATA OR DATA BEING RENDERED INACCURATE OR LOSSES SUSTAINED BY YOU OR THIRD PARTIES OR A FAILURE OF THE PROGRAM TO OPERATE WITH ANY OTHER PROGRAMS), EVEN IF SUCH HOLDER OR OTHER PARTY HAS BEEN ADVISED OF THE POSSIBILITY OF SUCH DAMAGES.



Edimax Technology co., Ltd
6F., No.3, Wu-Chuan 3rd Road, Wu-Gu,
New Taipei

Edimax Technology Europe B.V.
Nijverheidsweg 25 5683 CJ Best
The Netherlands

Edimax Computer Company
3350 Scott Blvd., Bldg.15 Santa Clara,
CA 95054, USA