

INSTRUCTION MANUAL



HMP155A Temperature and Relative Humidity Probe

Revision: 6/15



Copyright © 1990-2015
Campbell Scientific, Inc.

Limited Warranty

“Products manufactured by CSI are warranted by CSI to be free from defects in materials and workmanship under normal use and service for twelve months from the date of shipment unless otherwise specified in the corresponding product manual. (Product manuals are available for review online at www.campbellsci.com.) Products not manufactured by CSI, but that are resold by CSI, are warranted only to the limits extended by the original manufacturer. Batteries, fine-wire thermocouples, desiccant, and other consumables have no warranty. CSI’s obligation under this warranty is limited to repairing or replacing (at CSI’s option) defective Products, which shall be the sole and exclusive remedy under this warranty. The Customer assumes all costs of removing, reinstalling, and shipping defective Products to CSI. CSI will return such Products by surface carrier prepaid within the continental United States of America. To all other locations, CSI will return such Products best way CIP (port of entry) per Incoterms ® 2010. This warranty shall not apply to any Products which have been subjected to modification, misuse, neglect, improper service, accidents of nature, or shipping damage. This warranty is in lieu of all other warranties, expressed or implied. The warranty for installation services performed by CSI such as programming to customer specifications, electrical connections to Products manufactured by CSI, and Product specific training, is part of CSI’s product warranty. **CSI EXPRESSLY DISCLAIMS AND EXCLUDES ANY IMPLIED WARRANTIES OF MERCHANTABILITY OR FITNESS FOR A PARTICULAR PURPOSE. CSI hereby disclaims, to the fullest extent allowed by applicable law, any and all warranties and conditions with respect to the Products, whether express, implied or statutory, other than those expressly provided herein.”**

Assistance

Products may not be returned without prior authorization. The following contact information is for US and international customers residing in countries served by Campbell Scientific, Inc. directly. Affiliate companies handle repairs for customers within their territories. Please visit www.campbellsci.com to determine which Campbell Scientific company serves your country.

To obtain a Returned Materials Authorization (RMA), contact CAMPBELL SCIENTIFIC, INC., phone (435) 227-9000. After an application engineer determines the nature of the problem, an RMA number will be issued. Please write this number clearly on the outside of the shipping container. Campbell Scientific's shipping address is:

CAMPBELL SCIENTIFIC, INC.

RMA# _____
815 West 1800 North
Logan, Utah 84321-1784

For all returns, the customer must fill out a "Statement of Product Cleanliness and Decontamination" form and comply with the requirements specified in it. The form is available from our web site at www.campbellsci.com/repair. A completed form must be either emailed to repair@campbellsci.com or faxed to (435) 227-9106. Campbell Scientific is unable to process any returns until we receive this form. If the form is not received within three days of product receipt or is incomplete, the product will be returned to the customer at the customer's expense. Campbell Scientific reserves the right to refuse service on products that were exposed to contaminants that may cause health or safety concerns for our employees.

Precautions

DANGER — MANY HAZARDS ARE ASSOCIATED WITH INSTALLING, USING, MAINTAINING, AND WORKING ON OR AROUND TRIPODS, TOWERS, AND ANY ATTACHMENTS TO TRIPODS AND TOWERS SUCH AS SENSORS, CROSSARMS, ENCLOSURES, ANTENNAS, ETC. FAILURE TO PROPERLY AND COMPLETELY ASSEMBLE, INSTALL, OPERATE, USE, AND MAINTAIN TRIPODS, TOWERS, AND ATTACHMENTS, AND FAILURE TO HEED WARNINGS, INCREASES THE RISK OF DEATH, ACCIDENT, SERIOUS INJURY, PROPERTY DAMAGE, AND PRODUCT FAILURE. TAKE ALL REASONABLE PRECAUTIONS TO AVOID THESE HAZARDS. CHECK WITH YOUR ORGANIZATION'S SAFETY COORDINATOR (OR POLICY) FOR PROCEDURES AND REQUIRED PROTECTIVE EQUIPMENT PRIOR TO PERFORMING ANY WORK.

Use tripods, towers, and attachments to tripods and towers only for purposes for which they are designed. Do not exceed design limits. Be familiar and comply with all instructions provided in product manuals. Manuals are available at www.campbellsci.com or by telephoning (435) 227-9000 (USA). You are responsible for conformance with governing codes and regulations, including safety regulations, and the integrity and location of structures or land to which towers, tripods, and any attachments are attached. Installation sites should be evaluated and approved by a qualified engineer. If questions or concerns arise regarding installation, use, or maintenance of tripods, towers, attachments, or electrical connections, consult with a licensed and qualified engineer or electrician.

General

- Prior to performing site or installation work, obtain required approvals and permits. Comply with all governing structure-height regulations, such as those of the FAA in the USA.
- Use only qualified personnel for installation, use, and maintenance of tripods and towers, and any attachments to tripods and towers. The use of licensed and qualified contractors is highly recommended.
- Read all applicable instructions carefully and understand procedures thoroughly before beginning work.
- Wear a **hardhat** and **eye protection**, and take **other appropriate safety precautions** while working on or around tripods and towers.
- **Do not climb** tripods or towers at any time, and prohibit climbing by other persons. Take reasonable precautions to secure tripod and tower sites from trespassers.
- Use only manufacturer recommended parts, materials, and tools.

Utility and Electrical

- **You can be killed** or sustain serious bodily injury if the tripod, tower, or attachments you are installing, constructing, using, or maintaining, or a tool, stake, or anchor, come in **contact with overhead or underground utility lines**.
- Maintain a distance of at least one-and-one-half times structure height, 20 feet, or the distance required by applicable law, **whichever is greater**, between overhead utility lines and the structure (tripod, tower, attachments, or tools).
- Prior to performing site or installation work, inform all utility companies and have all underground utilities marked.
- Comply with all electrical codes. Electrical equipment and related grounding devices should be installed by a licensed and qualified electrician.

Elevated Work and Weather

- Exercise extreme caution when performing elevated work.
- Use appropriate equipment and safety practices.
- During installation and maintenance, keep tower and tripod sites clear of un-trained or non-essential personnel. Take precautions to prevent elevated tools and objects from dropping.
- Do not perform any work in inclement weather, including wind, rain, snow, lightning, etc.

Maintenance

- Periodically (at least yearly) check for wear and damage, including corrosion, stress cracks, frayed cables, loose cable clamps, cable tightness, etc. and take necessary corrective actions.
- Periodically (at least yearly) check electrical ground connections.

WHILE EVERY ATTEMPT IS MADE TO EMBODY THE HIGHEST DEGREE OF SAFETY IN ALL CAMPBELL SCIENTIFIC PRODUCTS, THE CUSTOMER ASSUMES ALL RISK FROM ANY INJURY RESULTING FROM IMPROPER INSTALLATION, USE, OR MAINTENANCE OF TRIPODS, TOWERS, OR ATTACHMENTS TO TRIPODS AND TOWERS SUCH AS SENSORS, CROSSARMS, ENCLOSURES, ANTENNAS, ETC.

Table of Contents

PDF viewers: These page numbers refer to the printed version of this document. Use the PDF reader bookmarks tab for links to specific sections.

| | |
|---|-----------|
| 1. Introduction | 1 |
| 2. Cautionary Statements..... | 1 |
| 3. Initial Inspection | 1 |
| 3.1 Ships With..... | 2 |
| 4. Quickstart | 2 |
| 5. Overview..... | 4 |
| 6. Specifications | 5 |
| 6.1 Temperature Sensor | 7 |
| 6.2 Relative Humidity Sensor | 7 |
| 7. Installation..... | 8 |
| 7.1 Wiring to Datalogger | 8 |
| 7.2 Datalogger Programming | 9 |
| 7.2.1 VoltSE() Instruction..... | 10 |
| 7.2.2 VoltDiff() Instruction..... | 10 |
| 7.3 Installation..... | 10 |
| 7.3.1 Installation in a 41005-5 14-Plate Shield | 12 |
| 7.3.2 Installation in a RAD14 14-Plate Shield..... | 12 |
| 7.3.3 Mount the Shield..... | 12 |
| 8. Operation..... | 13 |
| 8.1 Measurement..... | 13 |
| 8.2 Long Cable Lengths..... | 14 |
| 8.3 Absolute Humidity..... | 14 |
| 9. Troubleshooting and Maintenance | 15 |
| 9.1 Troubleshooting | 15 |
| 9.2 Maintenance..... | 15 |
| 9.2.1 Cleaning..... | 16 |
| 9.2.2 Changing the Probe Filter | 16 |
| 10. References | 17 |

Appendices

| | |
|---|------------|
| A. Importing <i>Short Cut Code</i> | A-1 |
|---|------------|

| | | |
|-----------|--|------------|
| A.1 | Importing <i>Short Cut</i> Code into a Program Editor..... | A-1 |
| B. | Example Programs..... | B-1 |
| B.1 | Single-Ended Voltage Measurement Example..... | B-1 |
| B.2 | Differential Measurement Example | B-2 |
| B.3 | Mean Vapor Pressure Example | B-3 |
| C. | Interfacing with HMP155A RS-485 Output | C-1 |
| C.1 | RS-485 Interface Options | C-1 |
| C.2 | SDM-SIO1 Serial I/O Module Interface Option | C-1 |
| C.2.1 | Program Example for SDM-SIO1 Module..... | C-1 |
| C.3 | MD485 Multidrop Interface Option | C-4 |
| C.3.1 | MD485 Multidrop Interface Configuration..... | C-6 |
| C.3.2 | CR1000 Example Program for use with MD485 | C-7 |

Figures

| | | |
|------|---|----|
| 6-1. | Probe dimensions | 5 |
| 6-2. | Wiring of HMP155A 8-pin connector..... | 6 |
| 7-1. | HMP155A in shipping box..... | 11 |
| 7-2. | Cable routed through the connector cover..... | 11 |
| 7-3. | Cable connected to the sensor | 12 |
| 7-4. | HMP155A with connector cover in place and without protective cap..... | 12 |
| 7-5. | HMP155A and 41005-5 14-plate radiation shield (left) and RAD14 (right) on a tripod mast | 13 |
| 7-6. | HMP155A and 41005-5 14-plate radiation shield on a CM200-series crossarm..... | 13 |
| 9-1. | Changing the filter..... | 16 |

Tables

| | | |
|------|---|-----|
| 7-1. | Wire Color, Function, and Datalogger Connection for Single-Ended Measurements | 8 |
| 7-2. | Wire Color, Function, and Datalogger Connection for Differential Measurements | 9 |
| 9-1. | Chemical Tolerances of HMP155A | 17 |
| B-1. | Wiring for Single-ended Measurement Examples..... | B-1 |
| B-2. | Wiring for Differential Measurement Examples | B-2 |
| B-3. | Wiring for Vapor Pressure Examples..... | B-3 |

HMP155A Temperature and Relative Humidity Probe

1. Introduction

The HMP155A probe monitors relative humidity (RH) for the range of 0 to 100% RH and temperature for the range of –80 to 60 °C. It provides reliable measurements for a wide range of applications as part of a weather station system or as a single instrument. All Campbell Scientific dataloggers are compatible.

NOTE

This manual provides information only for CRBasic dataloggers. It is also compatible with most of our retired Edlog dataloggers. For Edlog datalogger support, see an older manual at www.campbellsci.com/old-manuals or contact a Campbell Scientific application engineer for assistance.

2. Cautionary Statements

- READ AND UNDERSTAND the *Precautions* section at the front of this manual.
- When opening the shipping package, do not damage or cut the cable jacket. If damage to the cable is suspected, consult a Campbell Scientific application engineer.
- Although rugged, the HMP155A should be handled as a precision scientific instrument.
- Do not touch the sensor element.
- Santoprene® rubber, which composes the black outer jacket of the HMP155A cable, will support combustion in air. It is used because of its resistance to temperature extremes, moisture, and UV degradation. It is rated as slow burning when tested according to U.L. 94 H.B. and passes FMVSS302. However, local fire codes may preclude its use inside buildings.

3. Initial Inspection

- Check the packaging and contents of the shipment. If damage occurred during transport, immediately file a claim with the carrier. Contact Campbell Scientific to facilitate repair or replacement.
- Check model information against the shipping documents to ensure the expected products and the correct lengths of cable are received. Model numbers are found on each product. On cables and cabled items, the model number is usually found at the connection end of the cable. Report any shortages immediately to Campbell Scientific.

3.1 Ships With

The HMP155A ships with:

- (1) Adjustment Screwdriver from manufacturer
- (1) Calibration Sheet
- (1) Instruction Manual or ResourceDVD

4. Quickstart

Short Cut is an easy way to program your datalogger to measure the HC2S3 sensor and assign datalogger wiring terminals. Use the following procedure to get started.

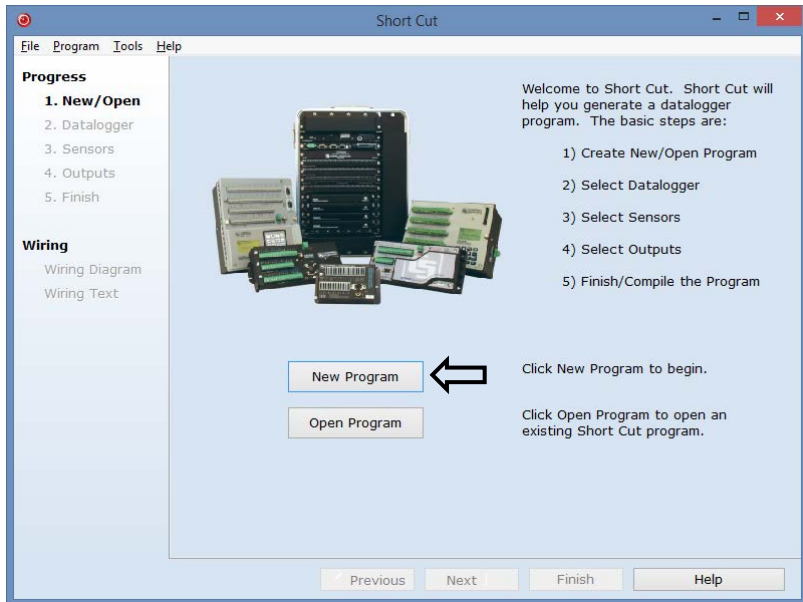
1. Install *Short Cut* by clicking on the install file icon. Get the install file from either www.campbellsci.com, the ResourceDVD, or find it in installations of *LoggerNet*, *PC200W*, *PC400*, or *RTDAQ* software.



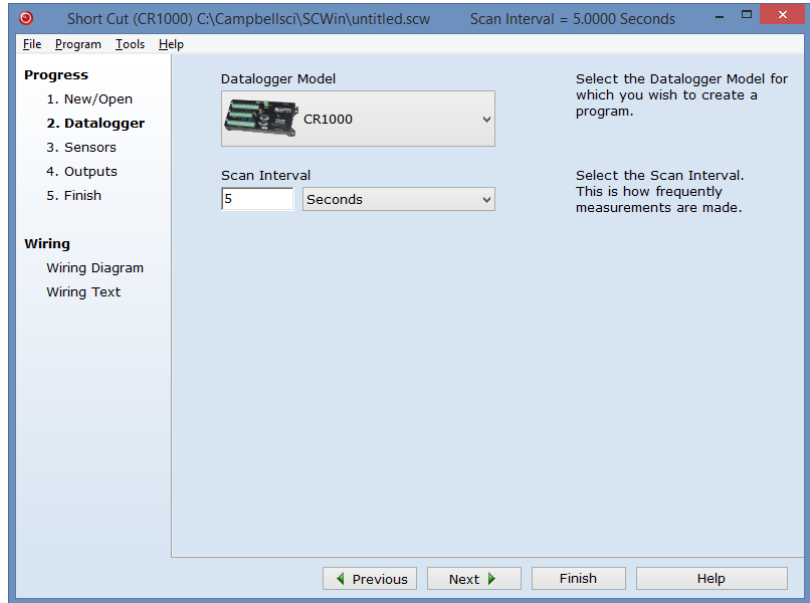
2. The *Short Cut* installation should place a shortcut icon on the desktop of your computer. To open *Short Cut*, click on this icon.




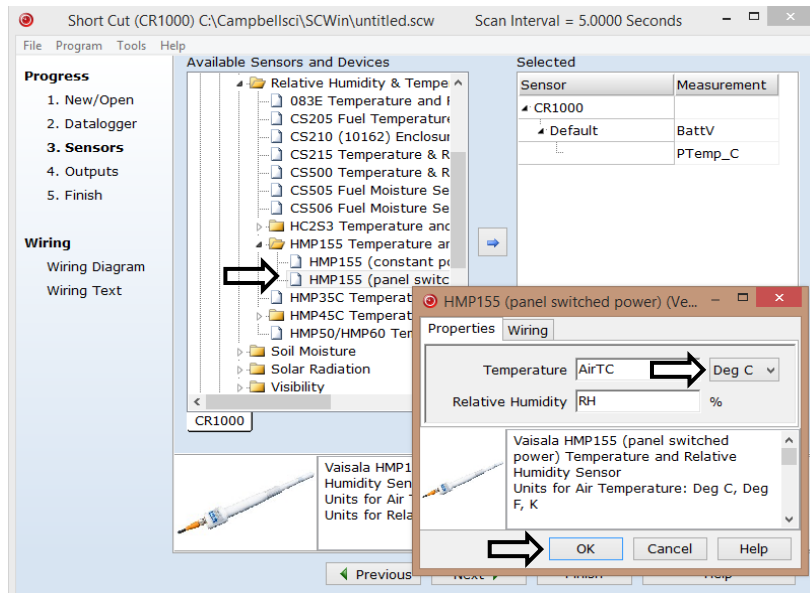
3. When *Short Cut* opens, select **New Program**.



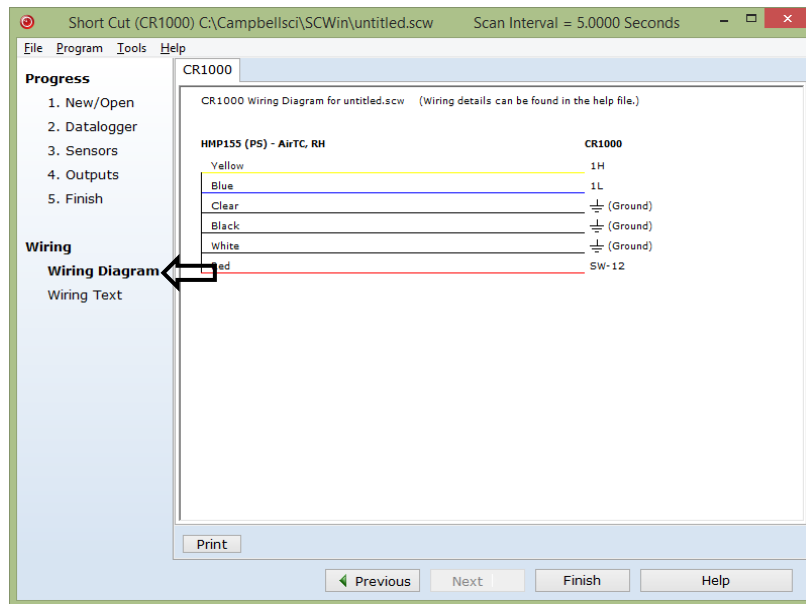
4. Select **Datalogger Model** and **Scan Interval** (default of 5 seconds is OK for most applications). Click **Next**.



5. Under the **Available Sensors and Devices** list, select the **Sensors | Meteorological | Relative Humidity & Temperature | HMP155 Temperature and Relative Humidity Sensor** folder. Choose either **constant power** or **panel-switched power** (uses less current). Click  to move the selection to the **Selected** device window. Data defaults to degree Celsius. This can be changed by clicking the **Deg C** box and selecting **Deg F**, for degrees Fahrenheit, or **K** for Kelvin.



- After selecting the sensor, click at the left of the screen on **Wiring Diagram** to see how the sensor is to be wired to the datalogger. The wiring diagram can be printed out now or after more sensors are added.



- Select any other sensors you have, then finish the remaining *Short Cut* steps to complete the program. The remaining steps are outlined in *Short Cut Help*, which is accessed by clicking on **Help | Contents | Programming Steps**.
- If *LoggerNet*, *PC400*, *RTDAQ*, or *PC200W* is running on your PC, and the PC-to-datalogger connection is active, you can click **Finish** in *Short Cut* and you will be prompted to send the program just created to the datalogger.
- If the sensor is connected to the datalogger, as shown in the wiring diagram in step 6, check the output of the sensor in the datalogger support software data display to make sure it is making reasonable measurements.

5. Overview

The HMP155A Temperature and Relative Humidity probe contains a platinum resistance temperature detector (PRT) and a Vaisala HUMICAP® 180 capacitive relative humidity sensor.

The HMP155A outputs a 0 to 1 Vdc signal for temperature and relative humidity that can be measured by all models of Campbell Scientific dataloggers with model HMP155ACBL1 cable. The HMP155A also has RS-485 outputs for temperature and relative humidity that can be interfaced to the CR6 datalogger with the HMP155ACBL2 cable. The RS-485 output can also be used with our CR800, CR850, CR1000, and CR3000 dataloggers, but they require both the HMP155ACBL2 cable and the SDM-SIO1 Serial I/O Module (Appendix C, *Interfacing with HMP155A RS-485 Output (p. C-1)*). The RS-485 output has a higher current drain than that listed in the specifications.

The HMP155A can be powered continuously, or the power may be switched to conserve battery life. The HMP155A consumes less than 3 milliamps current at 12 Vdc. Approximately 2 seconds is required for the sensor to warm up after power is switched on. At measurement rates slower than once per 5 seconds, the overall power consumption (datalogger and sensors) may be reduced by switching power to the HMP155A. Current Campbell Scientific dataloggers have a built-in switched 12 Vdc that can be used to control power. The CR9000 and many Edlog dataloggers do not have a built-in switched and require the SW12 to switch power (see at www.campbellsci.com/old-manuals or contact a Campbell Scientific application engineer for more information).

NOTE HMP155 sensors purchased directly from Vaisala with serial numbers < E4430001 require approximately 5 seconds warm up time.

6. Specifications

Features:

- Well-suited for long-term, unattended applications
- Accurate and rugged
- Compatible with Campbell Scientific CRBasic dataloggers: CR200(X) series, CR800 series, CR1000, CR3000, CR5000, and CR9000(X).

Dimensions in mm [inches]

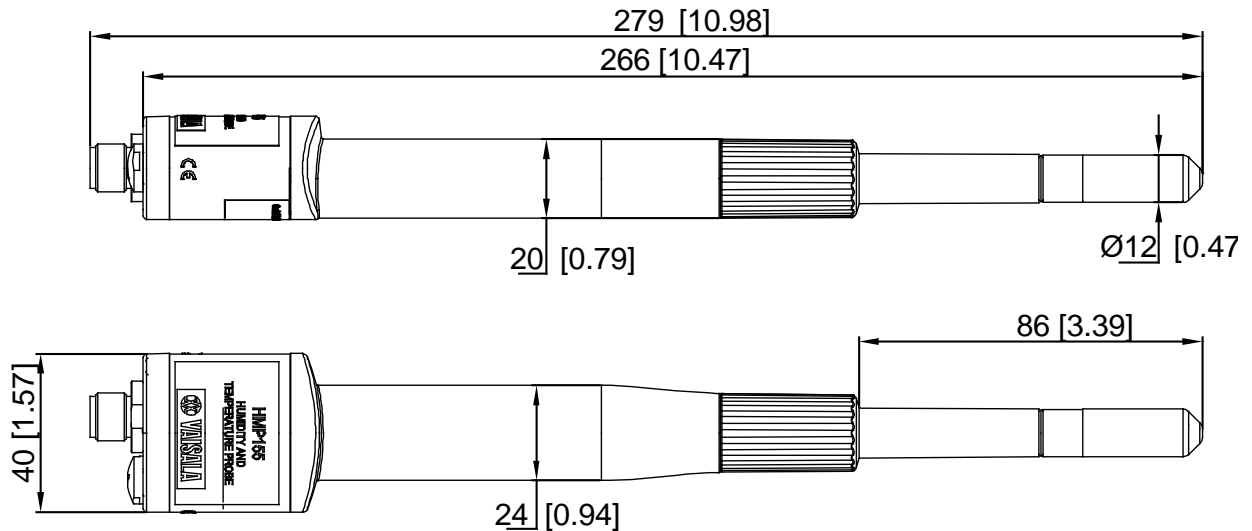
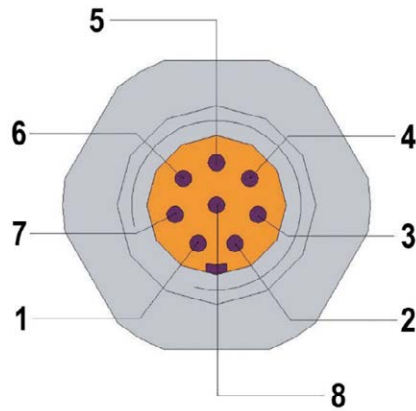


FIGURE 6-1. Probe dimensions

8-Pin Connector



0507-044

FIGURE 6-2. Wiring of HMP155A 8-pin connector

*HMP155ACBL1 Cable provided by Campbell Scientific

1=V_{OUT1} (yellow, temp)

2=no connection

3=A_{GND} (white)

4=V_{OUT2} (blue, RH)

5=no connection

6=no connection

7=V_{CC} (red)

8=GND (black)

- =SHIELD (clear)

*Note: HMP155ACBL2 for RS-485 is described in Appendix C.

**Operating temperature range
for humidity measurement:**

-80 to 60 °C (-112 to 140 °F)

Storage temperature range:

-80° to 60 °C (-112 to 140 °F)

Electromagnetic compatibility:

Complies with EMC standard EN61326-1, Electrical equipment for measurement control and laboratory use - EMC requirements for use in industrial locations

Filter:

Sintered PTFE

Housing material:

PC

Housing classification:

IP66

Weight:

86 g (3 oz)

Inputs and Outputs

| | |
|-------------------------------------|----------------------------|
| Voltage outputs: | 0 to 1 V |
| Average current consumption: | <3 mA (analog output mode) |
| Operating voltage: | 7 to 28 Vdc |
| Settling time at power-up: | 2 s |

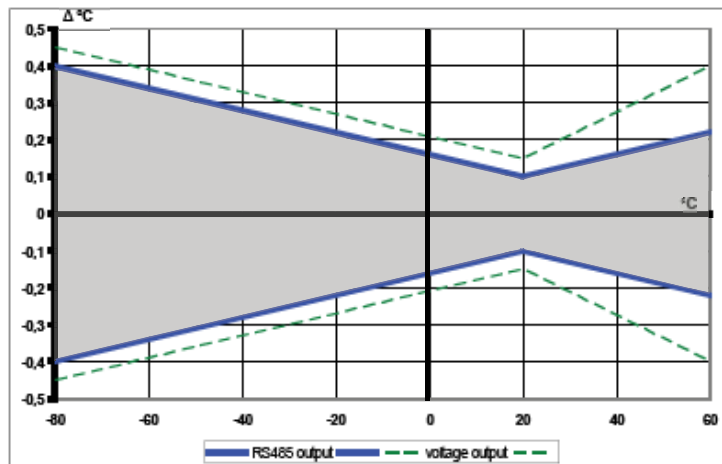
6.1 Temperature Sensor

Measurement range: -80 to 60 °C (-112 to 140 °F)

Accuracy with voltage output

| | |
|-------------------------|---|
| at -80 to 20 °C: | $\pm(0.226 - 0.0028 \times \text{temperature}) \text{ } ^\circ\text{C}$ |
| at 20 to 60 °C: | $\pm(0.055 + 0.0057 \times \text{temperature}) \text{ } ^\circ\text{C}$ |

See graph below



0804-032

Temperature sensor: Pt 100 RTD 1/3 Class B IEC 751

Response time (63 %) for additional temperature probe in 3 m/s air flow:

| | |
|-----|-------|
| 63% | <20 s |
| 90% | <35 s |

6.2 Relative Humidity Sensor

Measurement range: 0 to 100% RH

Accuracy (including non-linearity, hysteresis and repeatability)

| | |
|---------------------------------------|--|
| 15 to 25 °C (59 to 77 °F): | $\pm 1\% \text{ RH (0 to 90\% RH)}$ |
| | $\pm 1.7\% \text{ RH (90 to 100\% RH)}$ |
| -60 to -40 °C (-76 to -40 °F): | $\pm (1.4 + 0.032 \times \text{reading}) \text{ } \% \text{ RH}$ |
| -40 to -20 °C (-40 to -4 °F): | $\pm (1.2 + 0.012 \times \text{reading}) \text{ } \% \text{ RH}$ |
| -20 to 40 °C (-4 to 104 °F): | $\pm (1.0 + 0.008 \times \text{reading}) \text{ } \% \text{ RH}$ |
| 40 to 60 °C (104 to 140 °F): | $\pm (1.2 + 0.012 \times \text{reading}) \text{ } \% \text{ RH}$ |

Factory calibration uncertainty (20 °C): ±0.6% RH (0 to 40% RH)
 ±1.0% RH (40 to 97% RH)
 (Defined as ±2 standard deviation limits. Small variations possible, see also calibration certificate.)

Humidity sensor: HUMICAP®180R

Response time for HUMICAP®180R(C) at 20 °C in still air with sintered PTFE filter and a 0% to 75% RH step change: 20 s (63% step change);
 60 s (90% step change)

7. Installation

If you are programming your datalogger with *Short Cut*, skip Section 7.1, *Wiring to Datalogger* (p. 8), and Section 7.2, *Datalogger Programming* (p. 9). *Short Cut* does this work for you. See Section 4, *Quickstart* (p. 2), for a *Short Cut* tutorial.

7.1 Wiring to Datalogger

The HMP155A probe can be measured with two single-ended or differential analog input channels. Differential measurements are recommended for cable lengths greater than 6.1 m (20 ft). See Section 8.2, *Long Cable Lengths* (p. 14).

Connections to CRBasic dataloggers are given in TABLE 7-1 and TABLE 7-2. To wire an Edlog datalogger, see an older manual at www.campbellsci.com/old-manuals, or contact a Campbell Scientific application engineer for assistance.

| TABLE 7-1. Wire Color, Function, and Datalogger Connection for Single-Ended Measurements | | |
|--|--------------------------|---|
| Wire Color | Wire Function | Datalogger Connection Terminal |
| Yellow | Temperature signal | U configured for single-ended analog input ¹ , SE (single-ended, analog-voltage input) |
| Blue | Relative humidity signal | U configured for single-ended analog input, SE |
| White | Signal reference | ⏏ (analog ground) |
| Black | Power ground | ⏏ |
| Clear | Shield | ⏏ |
| Red | Power | SW12V |
| ¹ U channels are automatically configured by the measurement instruction. | | |

CAUTION

When measuring the HMP155A with single-ended measurements, the white and black leads must both be connected to \perp . Doing otherwise will connect the datalogger's analog and power ground planes to each other, which in some cases can cause offsets on low-level analog measurements. To avoid 3 mA flowing into analog ground, switch the sensor on/off for its own measurement.

TABLE 7-2. Wire Color, Function, and Datalogger Connection for Differential Measurements

| Wire Color | Wire Function | Datalogger Connection Terminal |
|-----------------|------------------------------|---|
| Yellow | Temperature signal | U configured for differential analog input H ¹ , Diff H |
| Jumper to White | Temperature signal reference | U configured for differential analog input L, Diff L |
| Blue | Relative humidity signal | U configured for differential analog input H, Diff H |
| White | Signal reference | U configured for differential analog input L, Diff L |
| Black | Power ground | G |
| Clear | Shield | \perp |
| Red | Power | 12V or SW12V |

¹U channels are automatically configured by the measurement instruction.

7.2 Datalogger Programming

Short Cut is the best source for up-to-date datalogger programming code. Programming code is needed,

- when creating a program for a new datalogger installation
- when adding sensors to an existing datalogger program

If your data acquisition requirements are simple, you can probably create and maintain a datalogger program exclusively with *Short Cut*. If your data acquisition needs are more complex, the files that *Short Cut* creates are a great source for programming code to start a new program or add to an existing custom program.

NOTE

Short Cut cannot edit programs after they are imported and edited in *CRBasic Editor*.

A *Short Cut* tutorial is available in Section 4, *Quickstart* (p. 2). If you wish to import *Short Cut* code into *CRBasic Editor* to create or add to a customized program, follow the procedure in Appendix A, *Importing Short Cut Code* (p. A-1). Programming basics for *CRBasic* dataloggers are provided in the following sections. Complete program examples for select dataloggers can be found in Appendix B, *Example Programs* (p. B-1).

Measure the HMP155A with either the **VoltSE()** or **VoltDiff()** measurement instruction as described in the following sections.

For a discussion on errors caused by long cable lengths, see Section 8.2, *Long Cable Lengths* (p. 14).

NOTE HMP155A sensors purchased directly from Vaisala with serial numbers < E4430001 require approximately 5 seconds warm up time.

7.2.1 VoltSE() Instruction

When cable lengths are shorter than 6.1 meters or when power is switched, the **VoltSE()** measurement instruction is used with CRBasic dataloggers (CR200(X)-, CR6-, and CR800-series, CR1000, CR3000) to measure both temperature and relative humidity from the HMP155A sensor. The HMP155A output scale is 0 to 1000 millivolts for the temperature range of -80 to 60 °C and for the relative humidity range of 0 to 100%.

VoltSE(Dest, Reps, Range, SEChan, MeasOff, SettlingTime, Integ/FNotch, Mult, Offset)

Variations:

- Temperature reported as °C — set **Mult** to **0.14** and **Offset** to **-80**
- Temperature reported as °F — set **Mult** to **.252** and **Offset** to **-112**
- Humidity reported as a percent — set **Mult** to **0.1** and **Offset** to **0**
- Humidity reported as a fraction — set **Mult** to **0.001** and **Offset** to **0**

7.2.2 VoltDiff() Instruction

When cable lengths are longer than 6.1 meters or when the sensor is constantly powered, the **VoltDiff()** measurement instruction is used to measure the HMP155A sensor. The HMP155A output scale is 0 to 1000 millivolts for the temperature range of -80 to 60 °C and for the relative humidity range of 0 to 100%.

VoltDiff(Dest, Reps, Range, DiffChan, RevDiff, SettlingTime, Integ/FNotch, Mult, Offset)

Variations:

- Temperature reported as °C — set **Mult** to **0.14** and **Offset** to **-80**
- Temperature reported as °F — set **Mult** to **.252** and **Offset** to **-112**
- Humidity reported as a percent — set **Mult** to **0.1** and **Offset** to **0**
- Humidity reported as a fraction — set **Mult** to **0.001** and **Offset** to **0**

7.3 Installation

Sensors should be located over an open level area at least 9 m (EPA) in diameter. The surface should be covered by short grass or the natural earth surface where grass does not grow. Sensors should be located at a distance of at least four times the height of any nearby obstruction, and at least 30 m (EPA) from large, paved areas. Sensors should be protected from thermal radiation, and adequately ventilated.

Standard measurement heights:

- 1.5 m (AASC)
- 1.25 – 2.0 m (WMO)
- 2.0 m (EPA)

See Section 10, *References* (p. 17), for a list of references that discuss temperature and relative humidity sensors.

Tools Required:

- 1/2 inch open-end wrench
- small screwdriver provided with datalogger
- UV-resistant cable ties
- small pair of diagonal-cutting pliers
- Adjustable wrench with a minimum 1-7/8 inch jaw size

To install the HMP155A, you will need the 41005-5 or RAD14 14-Plate Radiation Shield. The HMP155A is packaged with a white connector cover and a yellow sensor head protective cap. See FIGURE 7-1.

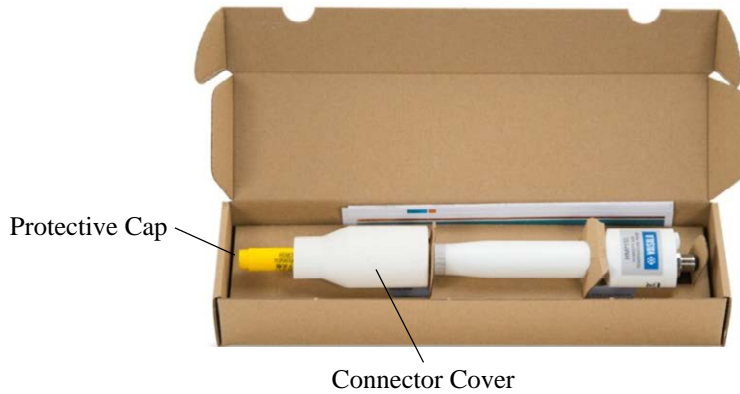


FIGURE 7-1. HMP155A in shipping box

1. Slide the white connector cover off the sensor head before removing the sensor from the box.
2. Squeeze the sides of the white connector cover and insert the cable's connector through it (see FIGURE 7-2).

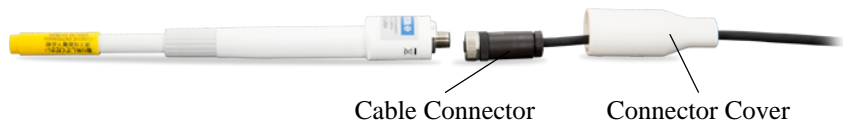


FIGURE 7-2. Cable routed through the connector cover

3. Attach the cable to the mating connector on the bottom of the HMP155A (see FIGURE 7-3).



FIGURE 7-3. Cable connected to the sensor

4. Slide the white connector cover over the connector and gently push it up as far as it will go. The white connector cover has built-in molded stops that will only allow it to slide up so far (see FIGURE 7-4).



FIGURE 7-4. HMP155A with connector cover in place and without protective cap

7.3.1 Installation in a 41005-5 14-Plate Shield

1. Loosely thread the collar adapter into the base of the 14-plate shield.
2. Remove the yellow protective cap on the HMP155A, and insert the sensor into the shield. See FIGURE 7-5 (left) and FIGURE 7-6.
3. Hold the collar and sensor, and finish threading the collar into the shield by hand. Tighten the hex plug so it compresses against the body of the HMP155A to hold it inside the 41005-5 radiation shield. Use an adjustable wrench if necessary, but do not overtighten the collar.

7.3.2 Installation in a RAD14 14-Plate Shield

1. Loosen the nut on the entry gland at the bottom of the shield.
2. Remove the yellow protective cap on the HMP155A, and insert the sensor into the shield.
3. Insert the sensor up into the gland as far as it will go. See FIGURE 7-5 (right).
4. Using an adjustable wrench, tighten down the nut on the gland until the sensor is held firmly in place. Do not overtighten.

7.3.3 Mount the Shield

1. Attach the radiation shield to the tripod mast, crossarm, or tower leg using the supplied U-bolt. See FIGURE 7-5 and FIGURE 7-6 for examples of shield mounting.
2. Route the cable to the datalogger, and secure the cable to the mounting structure using cable ties.



FIGURE 7-5. HMP155A and 41005-5 14-plate radiation shield (left) and RAD14 (right) on a tripod mast



FIGURE 7-6. HMP155A and 41005-5 14-plate radiation shield on a CM200-series crossarm

8. Operation

8.1 Measurement

The HMP155A uses a 100 Ω PRT to measure temperature and a Vaisala HUMICAP[®] 180 capacitive sensor to measure relative humidity. Campbell Scientific dataloggers measure the analog voltage outputs of the HC2S3 Temperature and Relative Humidity Probe with either the **VoltSE()** or **VoltDiff()** measurement instruction.

8.2 Long Cable Lengths

This section describes the error associated with measuring the HMP155A with a single-ended measurement when the probe has a long cable. To avoid these problems, Campbell Scientific recommends measuring the HMP155A using a differential analog measurement when long cable lengths are required. Generic datalogger connections for measuring the HMP155A using a differential measurement are given in TABLE 7-2.

Understanding the details in this section is not required for the general operation of the HMP155A with Campbell Scientific's dataloggers.

The signal reference (white) and the power ground (black) are connected inside the HMP155A. When the HMP155A temperature and relative humidity are measured using a single-ended analog measurement, both the signal reference and the power ground are connected to ground at the datalogger, and both serve as the return path for 12 V. The voltage will drop along those leads because the wire itself has resistance.

The HMP155A draws approximately 4 mA when it is powered. The wire used in the HMP155A (pn 9721) has resistance of 27.7 Ω /1000 ft. Since the signal reference and the power ground are both connected to ground at the datalogger, the effective resistance of those wires together is half of 27.7 Ω /1000 ft, or 13.9 Ω /1000 ft. Using Ohm's law, the voltage drop (V_d), along the signal reference/power ground, is given by Eq. (1).

$$\begin{aligned} V_d &= I \times R \\ &= 4 \text{ mA} \times 13.9 \text{ } \Omega / 1000 \text{ ft} \\ &= 55.6 \text{ mV} / 1000 \text{ ft} \end{aligned} \quad (1)$$

This voltage drop will raise the apparent temperature and relative humidity because the difference between the signal and the signal reference lead at the datalogger has increased by V_d . The approximate error in temperature and relative humidity is 0.56 $^{\circ}\text{C}$ and 0.56% per 100 feet of cable length, respectively.

8.3 Absolute Humidity

The HMP155A measures relative humidity. Relative humidity is defined by the equation below:

$$\text{RH} = \frac{e}{e_s} * 100 \quad (2)$$

where RH is the relative humidity, e is the vapor pressure in kPa, and e_s is the saturation vapor pressure in kPa. The vapor pressure, e , is an absolute measure of the amount of water vapor in the air and is related to the dewpoint temperature. The saturation vapor pressure is the maximum amount of water vapor that air can hold at a given air temperature. The relationship between dewpoint and vapor pressure, and air temperature and saturation vapor pressure are given by Goff and Gratch (1946), Lowe (1977), and Weiss (1977).

When the air temperature increases, so does the saturation vapor pressure. Conversely, a decrease in air temperature causes a corresponding decrease in

saturation vapor pressure. It follows then from Eq. (2) that a change in air temperature will change the relative humidity, without causing a change absolute humidity.

For example, for an air temperature of 20 °C and a vapor pressure of 1.17 kPa, the saturation vapor pressure is 2.34 kPa and the relative humidity is 50%. If the air temperature is increased by 5 °C and no moisture is added or removed from the air, the saturation vapor pressure increases to 3.17 kPa and the relative humidity decreases to 36.9%. After the increase in air temperature, the air can hold more water vapor. However, the actual amount of water vapor in the air has not changed. Thus, the amount of water vapor in the air, relative to saturation, has decreased.

Because of the inverse relationship between relative humidity and air temperature, finding the mean relative humidity is meaningless. A more useful quantity is the mean vapor pressure. The mean vapor pressure can be computed online by the datalogger (see Appendix B.3, *Mean Vapor Pressure Example* (p. B-3)).

9. Troubleshooting and Maintenance

9.1 Troubleshooting

Symptom: Relative Humidity is reported as **-9999**, **NAN**, **-80 °C**, or **0%**

1. Check that the sensor is wired to the correct analog input channels as specified by the measurement instructions.
2. Verify the range code for the single-ended or differential measurement instruction is correct for the datalogger type.
3. Verify the red power wire is correctly wired to the 12V or SW12V channel. The channel the wire is connected to will depend on the datalogger program.

Connect the red wire to a 12V terminal to constantly power the sensor for troubleshooting purposes. With the red wire connected to 12V, a voltmeter can be used to check the output voltage for temperature and relative humidity on the yellow and blue wires respectively (temperature °C = mV * 0.14 - 80.0; relative humidity % = mV * 0.1).

Symptom: Incorrect temperature or relative humidity

1. Verify the multiplier and offset parameters are correct for the desired units (Section 7.2, *Datalogger Programming* (p. 9)).

9.2 Maintenance

The HMP155A probe requires minimal maintenance. Check monthly to make sure the radiation shield is free from debris. The white screen at the tip of the probe should also be checked for contaminants.

When installed in close proximity to the ocean or other bodies of salt water, a coating of salt (mostly NaCl) may build up on the radiation shield, sensor, filter and even the chip. NaCl has an affinity for water. The humidity over a

saturated NaCl solution is 75%. A buildup of salt on the filter or chip will delay or destroy the response to atmospheric humidity.

The filter can be rinsed gently in distilled water. If necessary, the chip can be removed and rinsed as well. Do not scratch the chip while cleaning.

Recalibrate the HMP155A annually. Refer to the [Assistance](#) page at the beginning of this document for the procedure for returning the HMP155A to the factory to get recalibrated.

9.2.1 Cleaning

Clean the probe with a soft, lint-free cloth moistened with mild detergent.

9.2.2 Changing the Probe Filter

1. Remove the filter from the probe.
2. After removing the filter, check the O-ring and change it if necessary.
3. Install a new filter on the probe.

New filters can be ordered from Campbell Scientific or Vaisala.

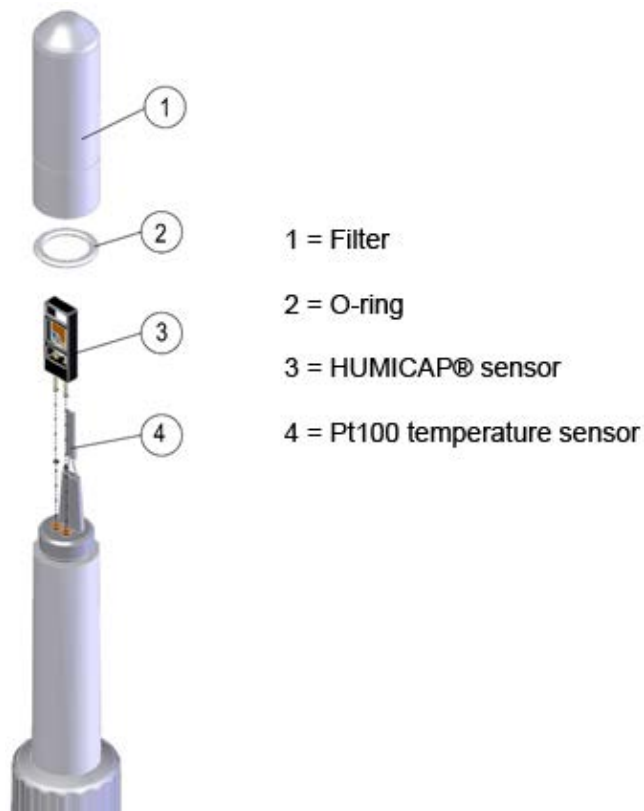


FIGURE 9-1. Changing the filter

Long term exposure of the HUMICAP[®] relative humidity sensor to certain chemicals and gases may affect the characteristics of the sensor and shorten its life. TABLE 9-1 lists the maximum ambient concentrations, of some chemicals, that the HUMICAP[®] can be exposed to.

| TABLE 9-1. Chemical Tolerances of HMP155A | |
|---|----------------------------|
| Chemical | Concentration (PPM) |
| Organic solvents | 1000 to 10,000 |
| Aggressive chemicals (e.g., SO ₂ , H ₂ SO ₄ , H ₂ S, HCl, Cl ₂ , etc.) | 1 to 10 |
| Weak Acids | 100 to 1000 |
| Bases | 10,000 to 100,000 |

10. References

Santoprene[®] is a registered trademark of Exxon Mobile Corporation.

AASC, 1985: The State Climatologist (1985) Publication of the American Association of State Climatologists: *Heights and Exposure Standards for Sensors on Automated Weather Stations*, v. 9, No. 4 October, 1985. (www.stateclimate.org/publications/state-climatologist/NOAA-NCY-SCBOOKS-SC77097/00000029.pdf)

EPA, 2008: *Quality Assurance Handbook for Air Pollution Measurement Systems*, Vol. IV, Meteorological Measurements, Ver. 2.0, EPA-454/B-08-002 (revised 2008). Office of Air Quality Planning and Standards, Research Triangle Park, NC 27711.

Goff, J. A. and S. Gratch, 1946: Low-pressure properties of water from -160° to 212°F, *Trans. Amer. Soc. Heat. Vent. Eng.*, **51**, 125-164.

Lowe, P. R., 1977: An approximating polynomial for the computation of saturation vapor pressure, *J. Appl. Meteor.*, **16**, 100-103.

Meyer, S. J. and K. G. Hubbard, 1992: Nonfederal Automated Weather Stations and Networks in the United States and Canada: A Preliminary Survey, *Bulletin Am. Meteor. Soc.*, **73**, No. 4, 449-457.

Vaisala, Inc. (2008) HMP155A Humidity and Temperature Probe User Guide, Helsinki, Finland. Text and figures used with permission of Vaisala, Inc.

Weiss, A., 1977: Algorithms for the calculation of moist air properties on a hand calculator, *Amer. Soc. Ag. Eng.*, **20**, 1133-1136.

WMO, 2008. *Guide to Meteorological Instruments and Methods of Observation*. World Meteorological Organization No. 8, 7th edition, Geneva, Switzerland.

Appendix A. Importing Short Cut Code

This tutorial shows:

- How to import a *Short Cut* program into a program editor for additional refinement
- How to import a wiring diagram from *Short Cut* into the comments of a custom program

A.1 Importing *Short Cut* Code into a Program Editor

Short Cut creates files that can be imported into *CRBasic Editor*. These files normally reside in the C:\campbellsci\SCWin folder and have the following extensions:

- .DEF (wiring and memory usage information)
- .CR6 (CR6 datalogger code)
- .CR2 (CR200(X) datalogger code)
- .CR1 (CR1000 datalogger code)
- .CR8 (CR800 datalogger code)
- .CR3 (CR3000 datalogger code)
- .CR5 (CR5000 datalogger code)
- .CR9 (CR9000(X) datalogger code)

The following procedures show how to import these files for editing.

1. Create the *Short Cut* program following the procedure in Section 4, *Quickstart* (p. 2). Finish the program and exit *Short Cut*. Make note of the file name used when saving the *Short Cut* program.
2. Open *CRBasic Editor*.
3. Click **File | Open**. Assuming the default paths were used when *Short Cut* was installed, navigate to C:\CampbellSci\SCWin folder. The file of interest has a “.CR6”, “.CR2”, “.CR1”, “.CR8”, “.CR3”, “.CR9”, or “.CR5” extension, for CR6, CR200(X), CR1000, CR800, CR3000, CR9000(X), or CR5000 dataloggers, respectively. Select the file and click **Open**.
4. Immediately save the file in a folder different from \Campbellsci\SCWin, or save the file with a different file name.

NOTE

Once the file is edited with *CRBasic Editor*, *Short Cut* can no longer be used to edit the datalogger program. Change the name of the program file or move it, or *Short Cut* may overwrite it next time it is used.

5. The program can now be edited, saved, and sent to the datalogger.
6. Import wiring information to the program by opening the associated .DEF file. Copy and paste the section beginning with heading “-Wiring for CRXXX-” into the CRBasic program, usually at the head of the file.

After pasting, edit the information such that a ' character (single quotation mark) begins each line. This character instructs the datalogger compiler to ignore the line when compiling the datalogger code.

Appendix B. Example Programs

B.1 Single-Ended Voltage Measurement Example

Below is an example CR1000 program that uses the single-ended voltage instruction to measure the sensor and uses the datalogger's SW12V terminal to power the sensor only when it is being measured. TABLE B-1 shows the wiring used for the example.

Other CRBasic dataloggers are programmed similarly.

| TABLE B-1. Wiring for Single-ended Measurement Examples | | |
|---|-------------------|-----------|
| Color | Description | CR1000 |
| Yellow | Temperature | SE 2 (1L) |
| Blue | Relative Humidity | SE 1 (1H) |
| White | Signal Reference | ⊥ |
| Red | Power | SW12V |
| Black | Power Ground | ⊥ |
| Clear | Shield | ⊥ |

```
'CR1000 program to measure HMP155A with single-ended measurements
Public AirTC
Public RH

DataTable(Temp_RH,True,-1)
  DataInterval(0,60,Min,0)
  Average(1,AirTC,IEEE4,0)
  Sample(1,RH,IEEE4)
EndTable

BeginProg
  Scan(5,Sec,1,0)
  'HMP155A Temperature & Relative Humidity Sensor measurements AirTC and RH:
  PortSet(9,1)
  Delay(0,2,Sec)
  VoltSE(AirTC,1,mV2500,2,0,0,_60Hz,.14,-80)
  VoltSE(RH,1,mV2500,1,0,0,_60Hz,0.1,0)
  PortSet(9,0)
  If RH>100 AND RH<108 Then RH=100
  CallTable(Temp_RH)
NextScan
EndProg
```

B.2 Differential Measurement Example

Below is an example CR1000 program that uses the differential voltage instruction to measure the sensor and uses the datalogger's SW12V terminal to power the sensor only when it is being measured. The differential instruction is recommended for long lead lengths. TABLE B-2 shows the wiring used for these examples.

Other CRBasic dataloggers are programmed similarly.

| TABLE B-2. Wiring for Differential Measurement Examples | | |
|---|-------------------|--------|
| Color | Description | CR1000 |
| Yellow | Temperature | 2H |
| | Jumper to 1L | 2L |
| Blue | Relative Humidity | 1H |
| White | Signal Reference | 1L |
| Red | Power | SW12 V |
| Black | Power Ground | G |
| Clear | Shield | ⊥ |

```
'CR1000 program to measure HMP155A with differential measurements
Public AirTC
Public RH

DataTable(Temp_RH,True,-1)
  DataInterval(0,60,Min,0)
  Average(1,AirTC,IEEE4,0)
  Sample(1,RH,IEEE4)
EndTable

BeginProg
  Scan(5,Sec,1,0)
  'HMP155A Temperature & Relative Humidity Sensor measurements AirTC and RH:
  PortSet (9,1)
  Delay(0,2,Sec)
  VoltDiff (AirTC,1,mV2500,2,True,0,_60Hz,.14,-80)
  VoltDiff (RH,1,mV2500,1,True,0,_60Hz,0.1,0)
  PortSet (9,0)
  If RH>100 AND RH<108 Then RH=100
  CallTable(Temp_RH)
NextScan
EndProg
```

B.3 Mean Vapor Pressure Example

Below is an example CR1000 program that computes mean vapor pressure. TABLE B-3 shows the wiring used for these examples.

Other CRBasic dataloggers are programmed similarly.

| Color | Description | CR1000 |
|--------|-------------------|-----------|
| Yellow | Temperature | SE 2 (1L) |
| Blue | Relative Humidity | SE 1 (1H) |
| White | Signal Reference | ⊥ |
| Red | Power | SW12V |
| Black | Power Ground | ⊥ |
| Clear | Shield | ⊥ |

```
'CR1000 program that calculates Vapor Pressure

Public AirTC
Public RH
Public RH_Frac, e_Sat, e_kPa

DataTable(Temp_RH,True,-1)
  DataInterval(0,60,Min,0)
  Average(1,AirTC,IEEE4,0)
  Sample(1,RH,IEEE4)
  Sample(1,e_kPa,IEEE4)
EndTable

BeginProg
  Scan(5,Sec,1,0)
  'HMP155A Temperature & Relative Humidity Sensor measurements AirTC and RH:
  PortSet (9,1)
  Delay(0,2,Sec)
  VoltSE(AirTC,1,mV2500,2,0,0,_60Hz,.14,-80)
  VoltSE(RH,1,mV2500,1,0,0,_60Hz,0.1,0)
  PortSet (9,0)
  If RH>100 AND RH<108 Then RH=100
  'Calculate Vapor Pressure
  'Convert RH percent to RH Fraction
  RH_Frac = RH * 0.01
  'Calculate Saturation Vapor Pressure
  SatVP(e_Sat, AirTC)
  'Compute Vapor Pressure, RH must be a fraction
  e_kPa = e_Sat * RH_Frac
  CallTable(Temp_RH)
NextScan
EndProg
```


Appendix C. Interfacing with HMP155A RS-485 Output

C.1 RS-485 Interface Options

The HMP155A outputs a 0 to 1 Vdc signal for temperature and relative humidity that can be measured by all models of Campbell Scientific dataloggers with model HMP155ACBL1 cable. The HMP155A also has RS-485 outputs for temperature and relative humidity that can be interfaced to the CR800, CR1000, and CR3000 dataloggers with model HMP155ACBL2 cable and the SDM-SIO1 Serial I/O Module. Vaisala also sells a cable with RS-485 outputs which is documented in the example programs below.

The MD485 Multidrop Interface can also be used to interface the RS-485 outputs to the CR800, CR1000, and CR3000 dataloggers. This option requires a USB to RS-485 cable (available from Vaisala) to change the default baud rate of the RS-485 output from the default of 4800 to a baud rate supported by the MD485.

C.2 SDM-SIO1 Serial I/O Module Interface Option

The SDM-SIO1 module is used to interface the RS-485 outputs of the HMP155A to the datalogger. The SDM-SIO1 functions like a built-in serial port to the datalogger. Data are buffered in the SDM-SIO1 and retrieved by the datalogger using standard program instructions.

The SDM-SIO1 connects to the datalogger's 12V, G, and SDM terminals (C1, C2, C3). Sensor wiring to the SDM-SIO1 and the datalogger is documented in the example program below.

C.2.1 Program Example for SDM-SIO1 Module

The following program sends the commands 'SMODE RUN' and 'R' to enable the RS-485 output. SerialInRecord and Mid instructions parse the serial string and put the temperature and relative humidity values into public variables.

```

'CR1000 Series Datalogger
'Sensor Wiring:
'HMP155A with RS-485 Output:
'
' HMP155A      HMP155A      SDM-SI01      CR1000      Connector Pin-Out
' CSI         Vaisala
' *Cable      Cable
'
' blue        pink          Y              6
' yellow      brown         Z              2
' black       red           G              8
' red         blue          12V           7
' white       green         0V            3
' shield (clear) black       Ground         not connected
'
' grey, pink, brown - NOT used
'
' *HMP155ACBL2 cable, ordered separately

'Declare Public Variables
Public TempC, RH, NbytesReturned
Public SerialIndest As String * 26
Public String_1 As String
Public String_2 As String

Const SensorPort=32
Const CRLF=CHR(13)+CHR(10)

SequentialMode

'Define Data Tables
DataTable (Table1,1,-1)
  DataInterval (0,15,Min,10)
  Average (1,TempC,FP2,False)
  Sample (1,RH,FP2)
EndTable

'Main Program (for sensor configured for default settings of 4800 baud, E,7,1)
BeginProg

  SerialOpen (SensorPort,4800,58,0,53)  ' buffer = 2*number of bytes + 1
                                       ' SDM-SI01 port 58 for half duplex,7,E,1

  'Strings to start serial output
  String_1 = "SMODE RUN"+CRLF          ' set SMODE to "RUN"
  String_2 = "R"+CRLF                 ' send "R" to start serial output

  'Instructions to enable RS-485 serial output

  SerialOut (SensorPort,String_1,"RUN",3,100) 'send String_1, wait for 'RUN' response
  Delay (0,500,mSec)
  SerialOut (SensorPort,String_2,"RH",3,100)  'send String_2

  Scan (5,Sec,0,0)

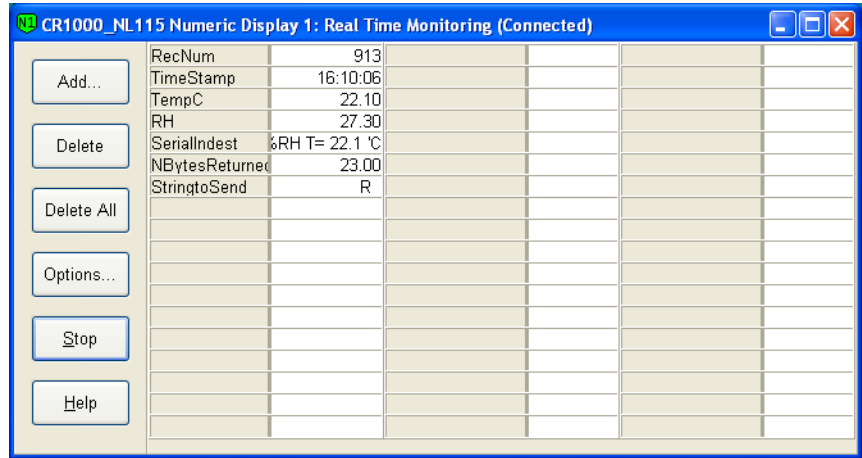
  'Get serial string from sensor
  SerialInRecord (SensorPort,SerialIndest,00,24,&H0D0A,NbytesReturned,00) ' &H0D0A = CRLF

  'Parse RH and temp from string
  RH=Mid (SerialIndest,5,4)
  SplitStr (RHArray(1),SerialIndest,"=",2,0)

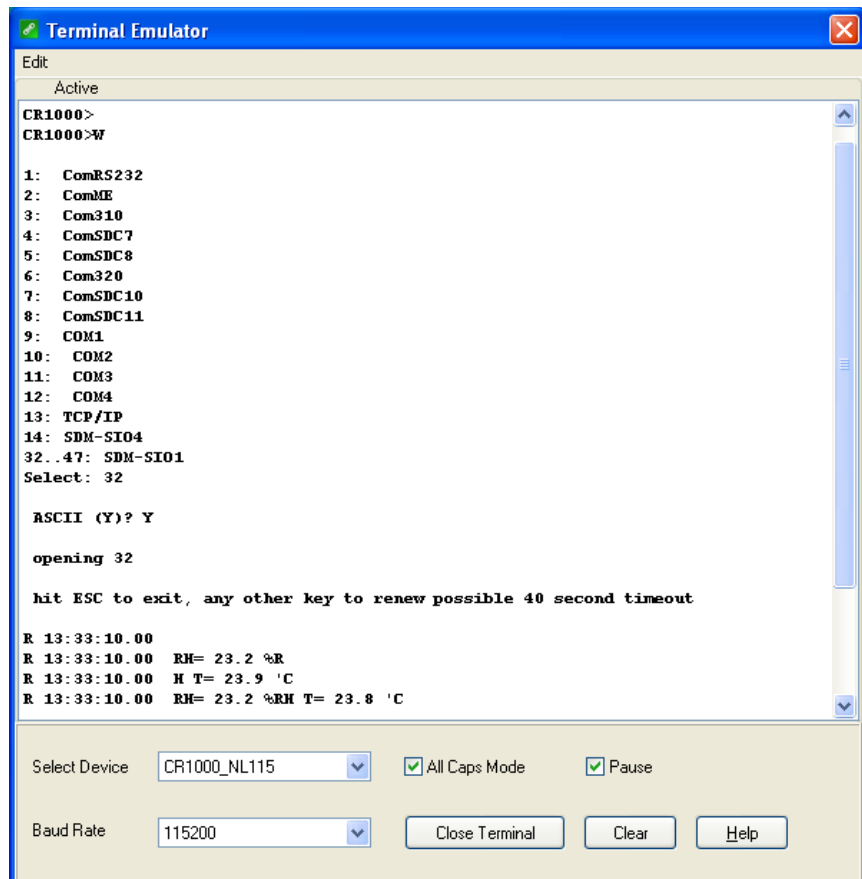
  CallTable Table1
  NextScan
EndProg

```

The public variables for temperature and relative humidity can be viewed in the 'Numeric Display' mode as shown below.



For troubleshooting purposes, the serial data buffer in the datalogger can be viewed using the 'W' terminal command. This is done by connecting to the datalogger from the 'Connect' button of *LoggerNet* or *PC400W*. From the Connect screen, select Tools|Terminal Emulator. Click the 'Open Terminal' button, and press the enter key to get the 'CR1000' prompt. Type 'W' for the 'Serial Comms Sniffer'. Enter 32 for the SDM-SIO1, and 'Y' for ASCII. Raw serial data received by the buffer is displayed on the screen as shown below.

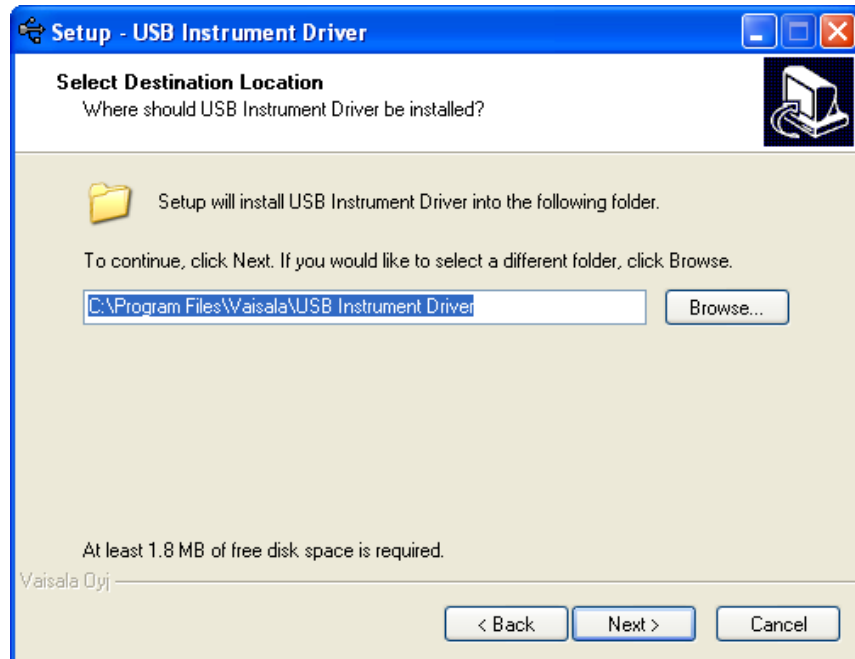


C.3 MD485 Multidrop Interface Option

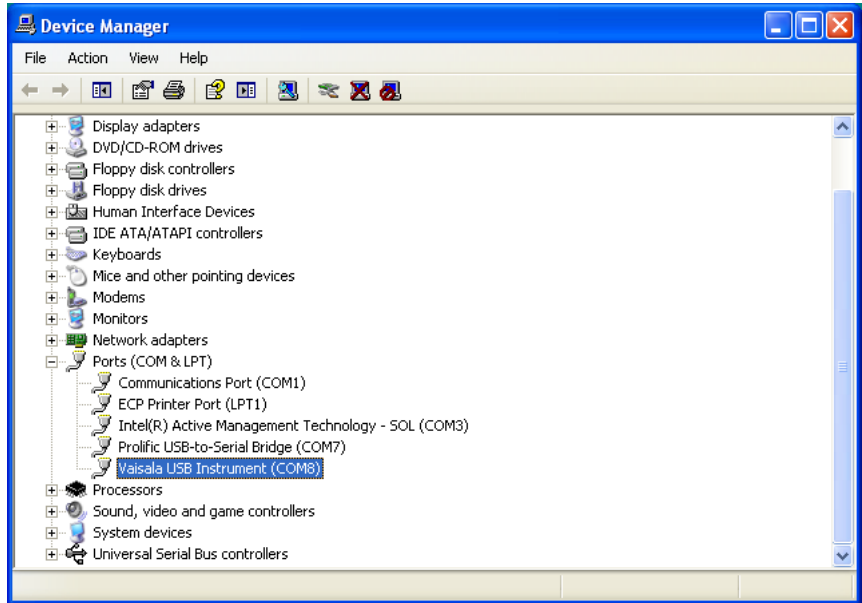
The MD485 Multidrop Interface can be used to interface the RS-485 outputs of the HMP155A to the datalogger's CS I/O port. Connect the MD485's CS I/O port to the datalogger's CS I/O port with an SC12 cable. Sensor wiring to the MD485 and the datalogger is documented in the example program below.

The HMP155A has a default RS-485 baud rate of 4800, which must be changed to 9600 to be compatible with the MD485. To change settings in the HMP155A, Vaisala's USB to RS-485 cable is required to interface the HMP155A sensor to a computer. Commands to change settings are sent to the HMP155A using a terminal emulator such as Windows HyperTerm.

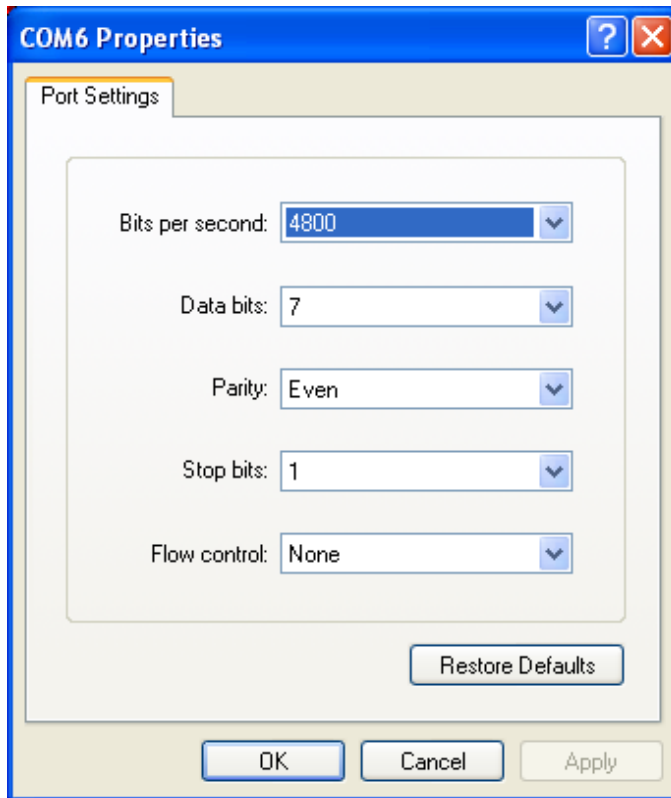
Vaisala's USB to RS-485 cable includes a CD with drivers that must be installed on the computer before the cable can be used. Insert the CD into the computer's CD drive and follow the prompts.



Use the Device Manager in Windows to determine which COM port the USB/RS-485 cable was assigned:



Configure Windows HyperTerminal for the appropriate COM port (for example, COM8 in the example above) for the default HMP155A RS-485 settings of 4800 baud, 7, E, 1.



Using HyperTerminal, send the following commands to the HMP155A:

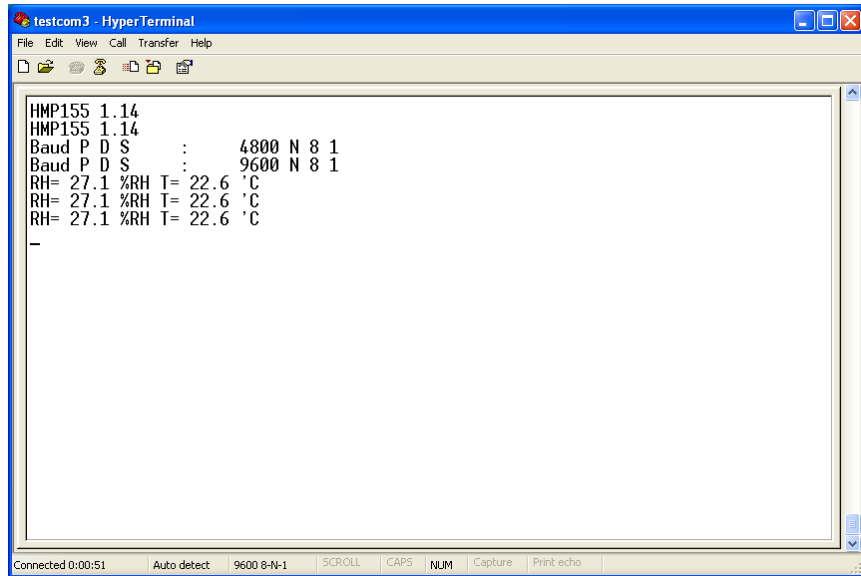
VERS[enter] to get a response from the sensor; for example, HMP155A 1.26

SERI[enter] to get the current RS-485 settings; for example, 4800 E 7 1

SERI 9600 N 8 1[enter] to change the RS-485 settings; response should be
9600 N 8 1

R[enter] to put the sensor in the Run mode to output continuous measurements

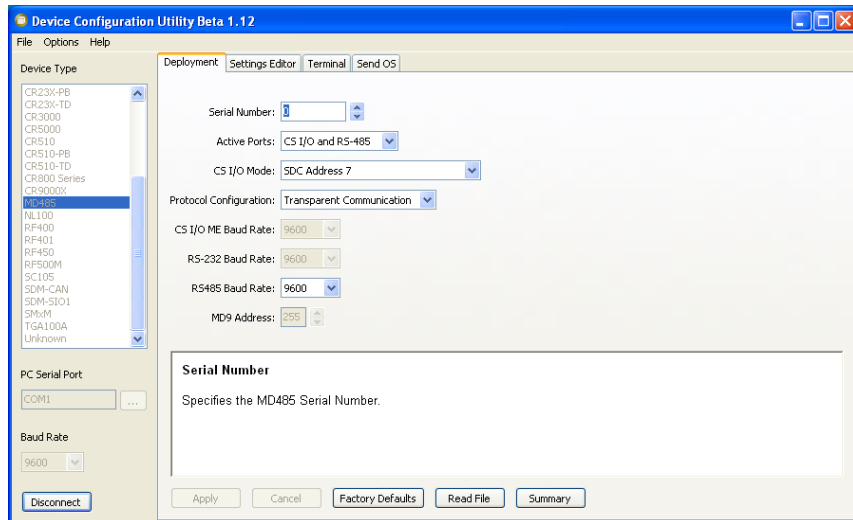
Responses to the commands are shown in the screen capture below.



After the settings have been changed, change the baud rate in HyperTerminal to 9600, and make sure the relative humidity and temperature string is being displayed before connecting the sensor to the MD485.

C.3.1 MD485 Multidrop Interface Configuration

Using the Device Configuration Utility, configure the MD485 as shown below.



Connect the MD485's CS I/O port to the datalogger's CS I/O port using an SC12 cable. Use the HMP155ACBL2 to connect the HMP155A sensor to the MD485 and the datalogger (CR1000, CR800, or CR3000) as shown in the following table. The table also shows wiring for cables purchased from Vaisala.

| HMP155A CSI Cable | HMP155A Vaisala Cable | MD485 | CR1000 | Connector Pin-Out |
|----------------------|------------------------------------|-------|--------|----------------------|
| Blue | Pink | B | | 6 |
| Yellow | Brown | A | | 2 |
| Black | Red | | G | 8 |
| Red | Blue | | 12V | 7 |
| White | Green | | Ground | 3 |
| Shield (clear) | Black | | Ground | Not Connected |
| | Grey, Pink, Brown - NOT used | | | |

C.3.2 CR1000 Example Program for use with MD485

The following program sends the commands 'SMODE RUN' and 'R' to enable the RS-485 output. SerialInRecord and Mid instructions parse the serial string and put the temperature and relative humidity values into public variables.

```

'CR1000 Series Datalogger
'Change HMP155A default serial settings from 4800,E,7,1 To 9600,N,8,1:
' Sensor Wiring:
' *CSI cable      Vaisala cable MD485      CR1000      Connector Pin-Out
' blue           pink           B           6
' yellow         brown          A           2
' black          red           G           8
' red            blue          12V        7
' white          green          Ground      3
' shield (clear) Black          Ground      not connected
'                grey, pink, brown - NOT used

'MD485 settings:
' CS I/O AND RS-485
' SDC Address 7
' Transparent Communication
' RS-485 baud 9600

' *HMP155ACBL2, ordered separately

'Connect CS I/O port of MD485 to CS I/O port on CR1000 with SC12 cable.

Public NBytesReturned As Long
Public SerialIndest As String * 26
Public RHArray(2) As String
  Alias RHArray(1)=RH
  Alias RHArray(2)=TempC
Public String_1 As String
Public String_2 As String
Const SensorPort=32
Const CRLF=CHR(13)+CHR(10)

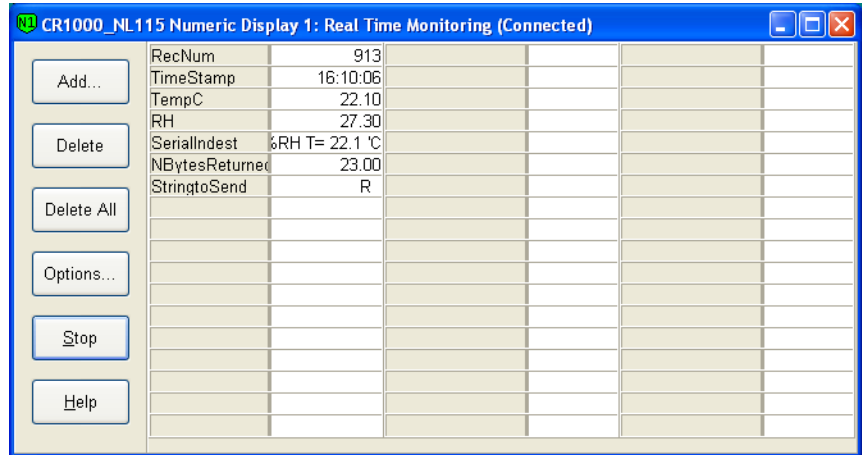
SequentialMode

'Define Data Tables
DataTable (Table1,1,-1)
DataInterval (0,15,Min,10)
Average (1,TempC,FP2,False)
Sample (1,RH,FP2)
EndTable

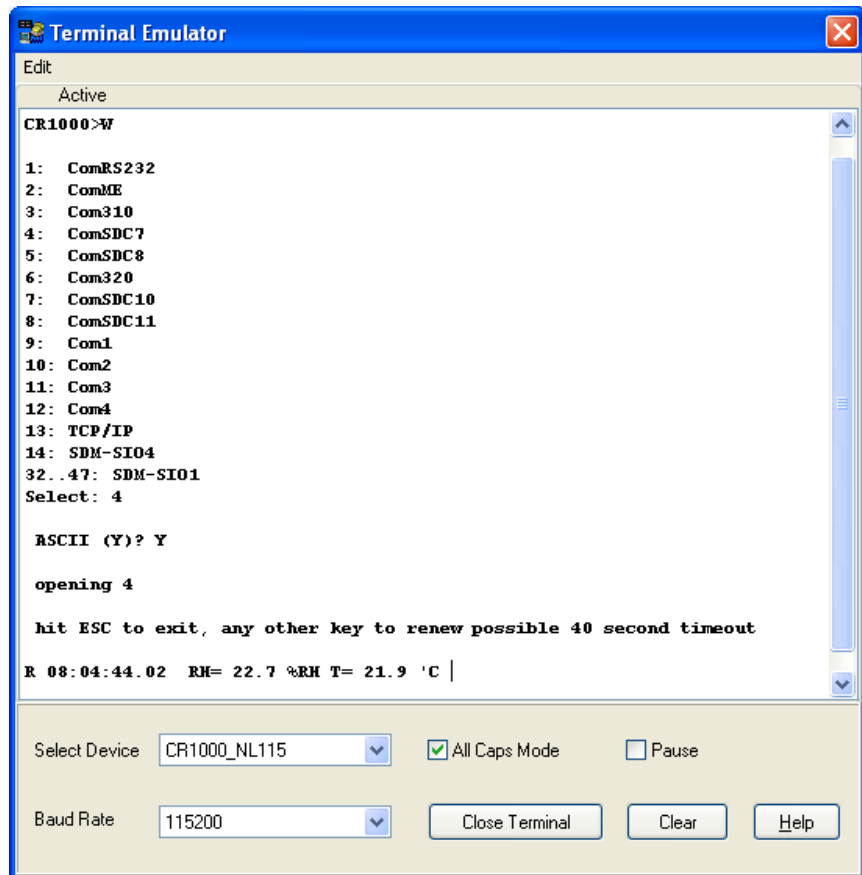
'Main Program (for sensor configured for default settings of 4800 baud, E,7,1)
BeginProg
  SerialOpen (SensorPort,4800,58,0,53) ' buffer = 2*number of bytes + 1
  ' SDM-SI01 port 58 for half duplex,7,E,1
  'Strings to start serial output
  String_1 = "SMODE RUN"+CRLF ' set SMODE to "RUN"
  String_2 = "R"+CRLF ' send "R" to start serial output
  'Instructions to enable RS-485 serial output
  SerialOut (SensorPort,String_1,"RUN",3,100) 'send String_1, wait for 'RUN' response
  Delay (0,500,mSec)
  SerialOut (SensorPort,String_2,"RH",3,100) 'send String_2
  Scan (5,Sec,0,0)
  'Get serial string from sensor
  SerialInRecord (SensorPort,SerialIndest,00,24,&H0DOA,NBytesReturned,00) '&H0DOA = CRLF
  'Parse RH and temp from string
  SplitStr (RHArray(1),SerialIndest,"=",2,0)
  CallTable Table1
NextScan
EndProg

```


The public variables for temperature and relative humidity can be viewed in the 'Numeric Display' mode as shown below.



For troubleshooting purposes, the serial data buffer in the datalogger can be viewed using the 'W' terminal command. This is done by connecting to the datalogger from the 'Connect' button of *LoggerNet* or *PC400W*. From the Connect screen, select Tools|Terminal Emulator. Click the 'Open Terminal' button, and press the enter key to get the 'CR1000' prompt. Type 'W' for the 'Serial Comms Sniffer'. Select '4' for 'ComSDC7', and 'Y' for ASCII. Raw serial data received by the buffer is displayed on the screen as shown below.



Campbell Scientific Companies

Campbell Scientific, Inc. (CSI)

815 West 1800 North
Logan, Utah 84321
UNITED STATES

www.campbellsci.com • info@campbellsci.com

Campbell Scientific Africa Pty. Ltd. (CSAf)

PO Box 2450
Somerset West 7129
SOUTH AFRICA

www.csafrica.co.za • cleroux@csafrica.co.za

Campbell Scientific Australia Pty. Ltd. (CSA)

PO Box 8108
Garbutt Post Shop QLD 4814
AUSTRALIA

www.campbellsci.com.au • info@campbellsci.com.au

Campbell Scientific (Beijing) Co., Ltd.

8B16, Floor 8 Tower B, Hanwei Plaza
7 Guanghua Road
Chaoyang, Beijing 100004
P.R. CHINA

www.campbellsci.com • info@campbellsci.com.cn

Campbell Scientific do Brasil Ltda. (CSB)

Rua Apinagés, nbr. 2018 — Perdizes
CEP: 01258-00 — São Paulo — SP
BRASIL

www.campbellsci.com.br • vendas@campbellsci.com.br

Campbell Scientific Canada Corp. (CSC)

14532 – 131 Avenue NW
Edmonton AB T5L 4X4
CANADA

www.campbellsci.ca • dataloggers@campbellsci.ca

Campbell Scientific Centro Caribe S.A. (CSCC)

300 N Cementerio, Edificio Breller
Santo Domingo, Heredia 40305
COSTA RICA

www.campbellsci.cc • info@campbellsci.cc

Campbell Scientific Ltd. (CSL)

Campbell Park
80 Hathern Road
Shepshed, Loughborough LE12 9GX
UNITED KINGDOM

www.campbellsci.co.uk • sales@campbellsci.co.uk

Campbell Scientific Ltd. (CSL France)

3 Avenue de la Division Leclerc
92160 ANTONY
FRANCE

www.campbellsci.fr • info@campbellsci.fr

Campbell Scientific Ltd. (CSL Germany)

Fahrenheitstraße 13
28359 Bremen
GERMANY

www.campbellsci.de • info@campbellsci.de

Campbell Scientific Spain, S. L. (CSL Spain)

Avda. Pompeu Fabra 7-9, local 1
08024 Barcelona
SPAIN

www.campbellsci.es • info@campbellsci.es

Please visit www.campbellsci.com to obtain contact information for your local US or international representative.