

D-View 6.0 SNMP Network Management System

Features

- + Layer 3 utilities, including IP Forwarding, RIP2, OSPF, IP Mroute, DVMRP and PIM functions, accommodate the increasing presence of Layer 3 switches and advanced routers in enterprise networks
- + Topology creation program generates diagrams and schematics useful for network design and layout planning
- + Easy overview of the entire network simplifies administration and monitoring
- + SNMPv3 support for major MIBs including MIB II, IF-MIB (RFC2233), Entity MIB (RFC2737), Bridge 802.1D (RFC1493), RMON, 802.1P (RFC2674) and 802.1Q (RFC2674)
- + Batch changes/upload/backup for the firmware or configuration
- + Trap/Alarm notification by e-mail
- + Multiple display views with many different options make network management and maintenance simple and convenient.
- + Powerful, easy-to-use MIB Compiler and Browser for use independent of D-View renders network management more effectively and with greater efficiency

The D-View® 6.0 SNMP Network Management System is a software tool that facilitates the central administration of a network with various SNMP-enabled devices. The D-View 6.0 Standard version (DV-600S) is tailored for networks with up to 1000 nodes. Beyond that, the D-View 6.0 Professional version (DV-600P) provides a server-based architecture that simplifies the daily management of the network. Flexible and versatile, D-View 6.0 provides network management to SNMP-based devices, including third party devices.

Automatic Discovery of Network Devices

Administrators can create a topology diagram to graphically represent planned or existing networks with a simple click of a button. Through SNMP or ICMP, a topology is automatically generated from your network devices. Traps can be sent to remote network devices to obtain status information. D-View 6.0 can recognize a device's standard (SNMP or non-SNMP), type (router or switch, wired or wireless) and network domain. That's only the beginning of the types of analyses administrators can perform on all their network devices. Import a bitmap of your building's blueprint and display your network's topology on top of the blueprint to provide a realistic representation of the network topology.

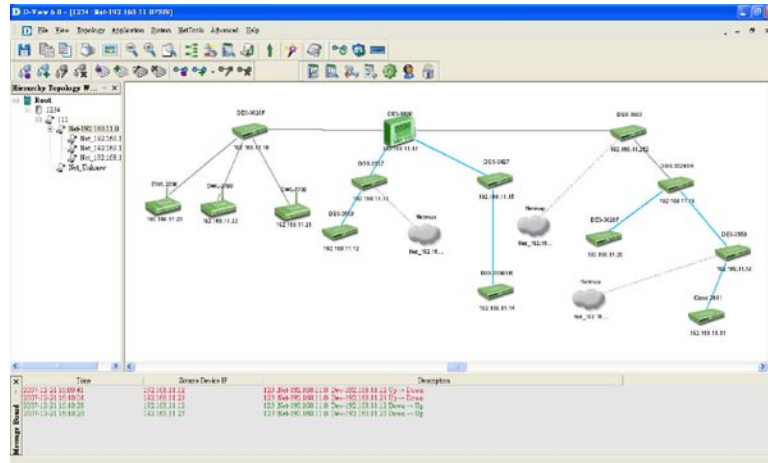


Figure 1: Automatically generate topology overviews of your network

Batch Configuration or Firmware Upgrades

D-View 6.0 makes switch firmware upgrades and configuration changes easier. Simply select the network devices you wish to upgrade and, with the click of one button, upload your software. This feature is especially useful in setting up a network. It is also useful for maintenance, as a group of switches can be scheduled for the same services: rebooting, port status monitoring, or enabling such features as Spanning Tree or the D-Link® Safeguard Engine™.

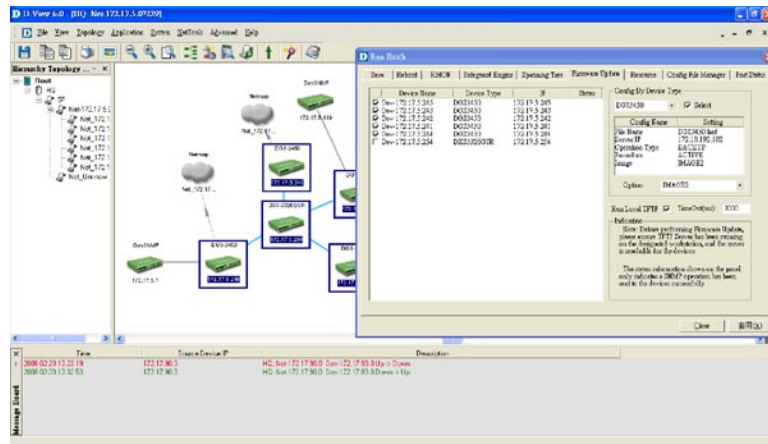


Figure 2: Upgrade devices with a few simple clicks.

D-View 6.0 SNMP Network Management System

MIB Browser/Compiler/Utilities

D-View 6.0 supports third-party devices as well. With the D-View MIB compiler, an administrator can compile and load third-party MIB files into D-View. In this recognizable format, D-View can then communicate with the third party devices making them manageable through D-View. Valuable information can then be polled to provide a complete status of the switch. Even in environments with products from mixed vendors, D-View can still provide a unified management platform.

Network Status – Real Time Management

D-View 6.0 is a useful tool for monitoring network status and performance in real time. It allows trap and alarm notification to be set, and can notify the administrator via e-mail. With the Event Viewer, Filter Setting can extract the exact information needed by event (type or severity), time (all or specific period), device (vendor or type), and source. Trap Log and Filter can be set to facilitate troubleshooting and monitoring.

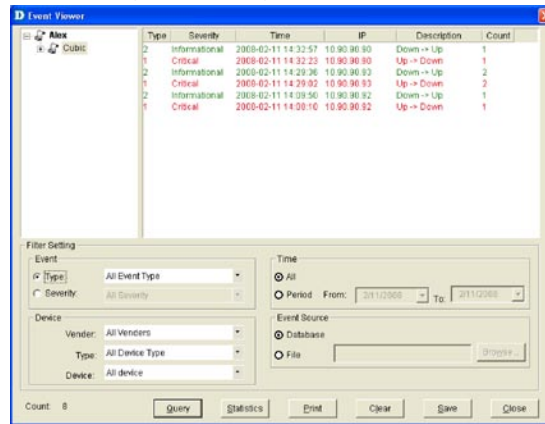


Figure 3: Real-time network monitoring.

D-View 6.0 can also present network performance in colorful bars and graphs, displaying easy-to-read charts with percentage of packet flow, types of packets, port flow, and much more, any time you want.

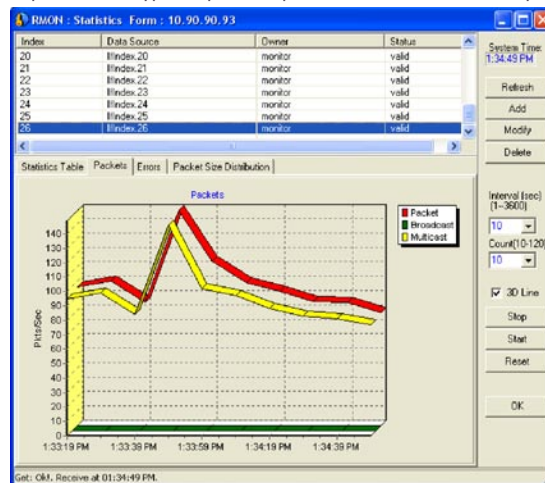


Figure 4: Real-time network analysis.

Microsoft SQL Server/Access Format Database

Completely integrate managed devices into your network environment with MIB support. With the MIB compiler and network topology data organized according to the Microsoft SQL Server and Microsoft Access formats, you'll have the option of editing their database using D-View, Microsoft SQL Server, or Microsoft Access software.

D-View 6.0 SNMP Network Management System

	Standard Edition	Professional Edition
Business size	Small to Medium Businesses	Large Enterprise Businesses
Architecture	Standalone	Client-Server
User Logins	Single User	Multiple User
Maximum Managed IP Nodes	Less than 1000 Nodes	More than 1000 Nodes
Database support	Microsoft Access	Microsoft SQL
Graphical Event Statistics	Bar/Pie Chart	
Network Management Protocol	SNMP v1/v2/v3	
MIB Utility Support	MIB II, 802.1D, RMON, Entity, IF MIBs, VLAN, 802.1P Layer 3 Utilities: IP Forwarding, PIN, OSPF, DVMRP, IP Mroute, RIP2	
MIB Browser & Compiler	Full Function Support of 1) Get & Set, 2) MIB Editor, and 3) SNMP v1/v2/v3	
Internet Tools Support	Trace Route, TFTP Server, Ping, Web	
Trap Manager	1) Alarm/trap message notification by sound/log/alert flash/email 2) Advanced filter and alarm/trap list view 3) Trap editor allows manager to add/modify trap items 4) History log support	

Both versions of D-View 6.0 also come fully equipped with Topology Auto Generator, Batch Configuration, Device Management Module, and Local and RADIUS User Authentication Modes

Technical Specifications

Hardware System Requirements	+ CPU: 1.4GHz or above	+ DRAM: 1G or above
	+ Hard drive available space: 200MB	+ Ethernet adapter
Software System Requirements	+ Operating System: - Windows Advanced Server 2000 & SP4 (D-View 6.0 for SQL Server 2000) - Windows 2003 Server (D-View 6.0 for SQL Server 2000) - Windows 2000 series product & SP4 (D-View 6.0 for Access 2000) - Windows XP	+ DBMS: - SQL-Server 2000 & SP3 (D-View 6.0 for SQL-Server 2000) - Access 2000 (D-View 6.0 for Access 2000) - Microsoft XML Parser and SDK
MIB Utilities	+ Device SNMP Configuration	+ MIB II Information and Statistics
	+ IF Information Tables	+ Spanning Tree Information and Port Configuration
	+ Bridge 802.1d Information and Port Configuration	+ RMON Statistic, History and Event Group
	+ L3 Utilities	+ 802.1p Priority Configuration
	+ MIB Browser	+ MIB Compiler
	+ Transparent Bridge Forwarding and Static Filter Table and Port Counter	
Fault Management Tools	+ Trap Filter	+ Trap Log
	+ Ping Poll Filter	+ Ping Poll Log
	+ SNMP Poll Filter	+ SNMP Poll Log
	+ Event Config Manager	+ Event Viewer

D-View 6.0 SNMP Network Management System

System Management Tools	+ Performance Monitor (switch should support RFC1213 Interface and RMON)	+ Device Panel Simulation Module
	+ Batch Program	+ Link Capacity Check
	+ Telnet Configuration	+ Safeguard Check
	+ Get All Arp Information	+ Device Type Check
	+ Topology Generator	+ Topology Import / Export
	+ Hierarchy Topology Manager	+ Device Type Extension
	+ Web Configuration	+ Telnet Configuration
	+ TFTP file transport	+ MAC Locator
	+ Ping	
Performance Management Tools	+ Performance Monitor	+ Report Functions Group including Collector Configuration, Collector and Data Analysis
Security Management Functions	+ SNMP v3 covering security functions such as packet encryption/decryption, user levels for different classes of access right, MPD (RFC 2572), TARGET (RFC 2573), USM (RFC 2574) and VACM (RFC 2575)	+ SNMP v3 Configuration
	+ Device Module Access Right Control	+ NMS System Access Control
	+ NMS System Function Module Access Right Control	+ Local and Radius Authentication Modes when Login
Resource Management Functions	+ Device Resource Manager	+ User Locator
	+ Device Locator	+ User Statistics
	+ Device Statistics	+ Device System Information Manager (RFC 1213 System)
	+ Device Port Status Manager	
Supported Devices	+ D-Link Devices: - Multi-layer switches - OLT/ONU devices - Wireless bridges and access points - Remote routers - Multi-tenant broadband CO devices	+ Windows Workstation, DC and Server
	+ Device Panel Simulation	

Warranty

Warranty	90-Day Limited ¹
----------	-----------------------------

Ordering Information

<i>Part Number</i>	<i>Description</i>
DV-600S	D-View 6.0 Standard SNMP Network Management System
DV-600P	D-View 6.0 Professional SNMP Network Management System

¹ Available only in the USA and Canada.

Product specification, size and shape are subject to change without notice, and actual product appearance may differ from that depicted herein.