



**QSC®**

---

Product Reference Guide  
for System Installations



QSC is a globally recognized manufacturer of audio, video and control systems for huddle rooms to large outdoor venues—and everything in between. While we're known for solid amplifiers and loudspeakers, we have a rich legacy in networked audio and digital signal processing. This history, combined with strong IT expertise, allows our team to develop flexible, software-based system solutions. Our systems enable your team to design and integrate projects that deliver the native IT integration and standards-based technology today's IT decision makers expect.

The following pages represent our latest systems products and technologies. Designed to give you a brief overview, this guide should be considered a supplement to the products and solutions pages online at [qsc.com](https://qsc.com). You will find a fully updated, comprehensive set of information, documentation, tools and images that work in tandem with this guide.

Additionally, [training.qsc.com](https://training.qsc.com) is another great resource to learn more about QSC products and solutions.

Enjoy the guide.



## **Q-SYS™ Ecosystem**

Q-SYS Processing	6
Q-SYS Networking	10
Q-SYS Audio	12
Q-SYS Video	20
Q-SYS Control	26
Q-SYS Integration	30
Q-SYS Monitoring	32
Q-SYS Public Address Peripherals	34

## **Amplifiers**

MP-A Series	38
SPA Series	40
CXD Series	42
CX Series	44
CMXa Series	46
ISA Series	48



## Loudspeakers

### *Ceiling-mount*

AcousticCoverage™ Series	54
--------------------------	----

AcousticDesign™ Series	56
------------------------	----

### *Pendant-mount*

AcousticDesign™ Series	64
------------------------	----

### *Surface-mount*

AcousticCoverage™ Series	68
--------------------------	----

AcousticDesign™ Series	70
------------------------	----

AcousticPerformance™ Series	82
-----------------------------	----

### *Small format SUB/SAT*

AcousticDesign™ Series	86
------------------------	----

### *Installation Line Array*

ILA Series	90
------------	----

## Mixers

MP-M Series	96
-------------	----



# Q-SYS™ ECOSYSTEM

**The Q-SYS Ecosystem** is the world's only integrated audio, video and control platform that's built on standard off-the-shelf IT hardware/network infrastructure, allowing it to easily integrate with other IT platforms. The flexible software foundation of the Q-SYS Ecosystem scales simply and cost effectively, reducing the need for dedicated hardware and eliminating complex integration workarounds that are common to traditional AV&C solutions.

 **audio**

 **video**

 **control**

 **processing**

 **networking**

 **integration**

 **monitoring**

Q-SYS™

Realtime Operating System and Processors  
for Audio, Video & Control



The Q-SYS™ Ecosystem provides the systems integrator and end user with a unified software design tool suite and feature set suitable for projects of any scale. With the bandwidth to handle even the most complex configurations, Q-SYS is ready for any job, from boardrooms and hotels to airports and stadiums. Built from the ground up to leverage mainstream IT hardware and networking technology, the Q-SYS Ecosystem runs all audio, video and control processing in a purpose-built Linux kernel with real-time extensions on Intel processing. This Intel™ hardware meets industry-best reliability standards and is used in many of the world's most mission-critical projects on a powerful, open, IT-friendly foundation, the Q-SYS Ecosystem transcends the limitations in scope, performance, and usability that keep other network audio, video and control systems from reaching their full potential.

	Local Inputs	Local Outputs	Local Flex Channels	AEC Processors	Built-In Networked Audio I/O	VoIP Instances	USB Audio I/O Instances	AV-to-USB Bridging	POTS	GPIO
Q-SYS Core 110f	8	8	8	16	128 x 128	4	4	1	1	16
Q-SYS Core 510i	128	128	N/A	64	256 x 256	64	†	†	N/A	16
Q-SYS Core 5200	N/A	N/A	N/A	160	512 x 512	64	†	†	N/A	16

† Available if combined with additional Q-SYS peripheral like the I/O-USB Bridge



Core 110f

## Unified Core

With an abundance of acoustic echo cancellation (AEC), raw processing power and networked audio channel count, the Q-SYS Core 110f processor offers the best cost-to-performance ratio of any in-room processing solution available. This smaller Core processor is ideal for: acoustic echo canceling and sound reinforcement in small to large meeting or multipurpose rooms, sound reinforcement in performance venues such as houses of worship and theaters, background music systems, wide area paging in airports, convention centers and hospitals.

- **Class Leading I/O:** Core 110f has 24 I/O + USB, POTS and VoIP simultaneously offering the best cost-to-I/O ratio in a single SKU, single chassis product available on the market.
- **8 Flex Channels:** Nearly all the flexibility of a card-based DSP solution without the hassle of multiple SKU's and custom ordering.
- **Web Conferencing Software Integration:** Core 110f provides on-board USB bridging capability (via USB-B port) for audio and Q-SYS PTZ-IP camera feeds to PCs, ideal for soft codec application such as Google Hangouts Meet™, Zoom™, Skype for Business™, Cisco Webex™ and others.
- **True IT Software Integration:** The Q-SYS Ecosystem is a true IT solution that is free of the fixed hardware limitations seen in competing products. It allows for greater functionality such as Layer 3 routing, LDAP contact server integration, SNMP monitoring, and more.
- **Suite of Software-Based Conferencing Technology Applications:** Built by QSC from the ground up allowing for continued refinement, with minimal requirement for additional hardware. The suite includes next-generation AEC, multiple-instance SIP softphones, gain sharing and gating automixers.



Core 510i

## Integrated Core and I/O Expander

The Q-SYS Core 510i processor offers the most flexible audio I/O options of any Core in the Q-SYS portfolio, perfect for applications that require a diversity of analog, digital and networked audio connectivity. It features eight I/O card slots allowing for up to 128 x 128 local channels. The Core 510i processor also offers two modes of operation whereby it can be deployed as a Q-SYS Core processor with full processing capabilities, or configured as an I/O expander when configured via software as an I/O-510i.

### Q-SYS Core mode

- **Processing Power:** When deployed as a Q-SYS Core, the Core 510i processor provides an abundance of raw processing power for all audio, video and control requirements.
- **Network Channels:** Offers a total of 256 x 256 network channels for diverse connectivity options.
- **Software-Defined Acoustic Echo Cancellation:** Core 510i processor offers 64 channels of software-defined acoustic echo cancellation (AEC) for audio and video conferencing applications. Software AEC with adjustable tail-length can be applied to any audio source without any additional or specific hardware.

### Q-SYS Frame mode

- **Additional Input/Output Support:** When configured via software as an I/O-510i, the device offers the ability to add up to 128 x 128 audio channels in to the Q-SYS system for processing on a separate Q-SYS Core processor.
- **Customizable Bridge Network Support:** Core 510i processor can accommodate any combination of Q-SYS Type-II I/O cards. This is particularly useful when integrating large numbers of networked audio channels from Dante™, CobraNet™ or AVB™ devices and subsystems in to the Q-SYS Ecosystem.



Core 5200

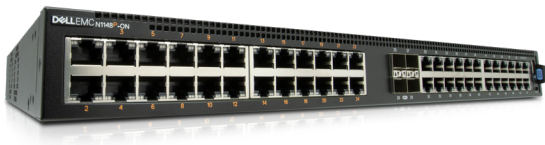
## Next-Generation Q-SYS Enterprise Cores

The Q-SYS Core 5200 Enterprise processor combines Q-SYS, the professional AV industry's first Intel® based real-time operating system purpose built for reconfigurable audio, video and control (AV&C), with the robustness of Dell™ hardware and their most prolific and world renowned server platform. The Q-SYS Core 5200 processor is the first professional AV&C product available that illustrates the transition away from proprietary, single-use hardware devices to modern, software-based appliances leveraging the power of commercial off-the-shelf server hardware.

- **IT-Centric Platform:** The Q-SYS Ecosystem is the only professional audio, video and control (AV&C) solution that is built from the ground up using modern IT technology, industry standard networking technology and mainstream software solutions to provide deterministic AV&C capabilities for the IT customer.
- **Unmatched AV&C Processing Resources:** The Core 5200 processor offers capability unmatched by any other audio, video or control processor making it the first solution to realize the flexibility and scalability of centralized AV&C processing in an economical manner.
- **Software-Defined Acoustic Echo Cancellation:** The Core 5200 processor offers 160 channels of software-defined acoustic echo cancellation (AEC) for audio and video conferencing applications. Software AEC with adjustable tail-length can be applied to any audio source without any additional or specific hardware.
- **Resiliency and Robustness of Dell:** The Core 5200 processor offers the real-time AV&C processing capabilities of the Q-SYS Ecosystem on Dell's most prolific and common IT server which has been fully vetted and used in IT environments and applications around the world. The Core 5200 processor offers access to iDRAC (integrated Dell Access Controller), along with dual hot-swappable AC mains power supplies.

## Q-SYS™

### NS Network Switches



The Q-SYS NS Series are a range of enterprise-grade, Dell-manufactured network switches that have been pre-configured specifically to meet the performance requirements of the Q-SYS Ecosystem, as well as other network AV technologies, including AES67 and Dante™. With a primary focus on Q-SYS audio, video & control (AV&C), these network switches provide an out-of-the-box, plug-and-play solution for Q-SYS integrators building local AV networks.

- **Expedite Deployment With A Plug-and-Play Solution:** Q-SYS NS Series network switches are pre-configured specifically to meet the performance requirements of Q-SYS audio, video and control (AV&C) systems, saving integrators an enormous amount of time installing local AV networks.
- **AV Infrastructure for Today's Modern AV Ecosystem:** QSC has paired rock-solid Dell EMC network switches with finely tuned switch configurations created by the Q-SYS product development team.
- **Future-ready Solution:** Q-SYS NS Series are the benchmark for future Q-SYS audio and video peripheral products, ensuring this investment in your AV infrastructure will support the expansion and evolution of your Q-SYS system for years to come.
- **Flexible Network Scenarios:** Q-SYS NS Series network switches support Q-LAN, AES67 and Dante™ audio streams in addition to Q-LAN video streaming and distribution, simultaneously within the same VLAN, without ever having to manually configure or adapt the QoS settings on the switches or end point devices.
- **Intelligent Management & Convenient Connection Options:** These switches automatically manage any multicast traffic on your network, which can be common with networked audio and video distribution systems. They also provide a number of PoE+ capable ports for convenient connection of networked AV peripherals.
- **Reduce Support Requirements:** This investment in your AV ecosystem will decrease the need to engage with IT tech support saving you time, cost, and frustration associated with troubleshooting untested network switches.



**Q-SYS NS 1108P****Q-SYS NS 1124P****Q-SYS NS 1148P**

<b>1Gbps Switch Ports (PoE+)</b>	10 (4)	24 (12)	48 (24)
<b>SFP Ports</b>	2 x 1 Gbps	4 x 10 Gbps	4 x 10 Gbps
<b>PoE Budget</b>	75 W	190 W	375 W
<b>Stacking</b>	No	Yes	Yes
<b>Mounting</b>	1 RU half-width	1 RU	1 RU
<b>Cooling</b>	Variable speed fan	Variable speed fan	Variable speed fan
<b>Power Supply</b>	Integrated AC mains	Integrated AC mains	Integrated AC mains



## Q-SYS™

### CX-Q Series Network Amplifiers



CX-Q 4K4 (network and analog inputs)

CX-Q Series network amplifiers combine a legacy of robust power amplifiers, advancements in high-efficiency output devices and native network transport, control and monitoring capabilities of the Q-SYS Ecosystem. CX-Q Series features four- and eight-channel models, capable of delivering customized power output loading and a total maximum power of up to 8000 W. Low impedance, 70 V or 100 V direct drive are available on all channels.

**Q-SYS Ecosystem Integration:** Like all Q-SYS peripherals, CX-Q Series network amplifiers offer simple drag-and-drop integration into your Q-SYS design, enabling network routing, advanced processing and control. This expedites the installation process and provides superior system performance far beyond that of third-party amplifier solutions.

**Legacy of Power Redefined:** CX-Q Series feature 5<sup>th</sup> generation high-efficiency, Class-D hybrid powertrain design built upon the dependable PL380 PowerLight™ amplifier platform. The new design offers both high voltage and high current operation with excellent audio quality and thermal performance.

**Flexible & Efficient Channel Power Distribution:** CX-Q Series network amplifiers combine two technologies that provide extreme flexibility in output deployment:

- **FlexAmp™:** allows for asymmetric output channel loading by drawing from large power reserves and distributing customized output power levels per channel. This reduces system cost by removing the need to specify multiple amplifiers with different power ratings in a multi-zone installation.
- **FAST (Flexible Summing Amplifier Technology™):** allows channels to be combined in bridge mode, parallel mode or bridge/parallel mode to deliver either higher voltage loads (up to 200 Vrms output) or higher current loads (up to 35 A).



- Seamless Q-SYS™ integration with audio transport, control and monitoring via standard gigabit Ethernet protocols and hardware
- Capable of providing up to 8,000 W of power
- Low-Z, 70 V and 100 V direct drive available on all channels
- Hybrid circuit topology mixing the robustness of the PL380 PowerLight™ with new high-voltage output devices
- PowerLight universal switchmode power supply with PFC for highest efficiency, and low weight
- Eight bi-directional GPIO connections
- Touch-proof Euroblock loudspeaker connections
- Automatic energy saving modes ensure that the amplifier will draw the minimum amount of AC power while still providing outstanding audio quality

		CX-Q 2K4	CX-Q 4K4
		Max Power	Max Power
4 Independent Channels A, B, C, D	70 V	700 W	1000 W
	100 V	350 W	500 W
	16 Ω	700 W	700 W
	8 Ω	700 W	1000 W
	4 Ω	800 W	1500 W
	2 Ω	600 W	800 W
2 Channels BTL Bridged A+B or C+D Doubles Voltage	140 V	1500 W	2000 W
	200 V	1500 W	2000 W
	8 Ω	1500 W	3000 W
	4 Ω	1400 W	1700 W
	2 Ω	NR*	NR*
2 Channels Parallel AB or CD Doubles Current	70 V	1400 W	2000 W
	100 V	1400 W	2000 W
	8 Ω	800 W	1000 W
	4 Ω	1250 W	2000 W
	2 Ω	1500 W	2500 W
3 Channel Combined in Parallel ABC Triples Current	8 Ω	800 W	1000 W
	4 Ω	1250 W	2000 W
	2 Ω	1500 W	3000 W
4 Channels Combined in Bridged/Parallel AB+CD Doubles Current and Voltage	8 Ω	2500 W	3500 W
	4 Ω	3000 W	4000 W
	2 Ω	NR*	NR*
4 Channels Combined in Parallel ABCD Quadruples Current	8 Ω	800 W	1000 W
	4 Ω	1250 W	2000 W
	2 Ω	1500 W	2500 W
	1 Ω	2500 W	4000 W

**NR\*:** Not Recommended due to excessive current draw  
**Max Power:** 20 ms 1 kHz Sine wave burst, all channels driven  
*Specifications are preliminary and are subject to change without notice.*



**CX-Q 8K4**

	Max Power	
4 Independent Channels A, B, C, D	70 V	1250 W
	100 V	1250 W
	16 $\Omega$	625 W
	8 $\Omega$	1250 W
	4 $\Omega$	2400 W
	2 $\Omega$	2750 W
2 Channels BTL Bridged A+B or C+D Doubles Voltage	140 V	2400 W
	200 V	2400 W
	8 $\Omega$	4000 W
	4 $\Omega$	5000 W
	2 $\Omega$	3000 W
2 Channels Parallel AB or CD Doubles Current	70 V	2400 W
	100 V	2400 W
	8 $\Omega$	1250 W
	4 $\Omega$	2400 W
	2 $\Omega$	4000 W
3 Channel Combined in Parallel ABC Triples Current	8 $\Omega$	1250 W
	4 $\Omega$	2400 W
	2 $\Omega$	4500 W
4 Channels Combined in Bridged/Parallel AB+CD Doubles Current and Voltage	8 $\Omega$	4200 W
	4 $\Omega$	78000 W
	2 $\Omega$	8000 W
4 Channels Combined in Parallel ABCD Quadruples Current	8 $\Omega$	1250 W
	4 $\Omega$	2500 W
	2 $\Omega$	5000 W
	1 $\Omega$	7000 W

**NR\*:** Not Recommended due to excessive current draw

**Max Power:** 20 ms 1 kHz Sine wave burst, all channels driven

*Specifications are preliminary and are subject to change without notice.*

*As part of QSC's ongoing commitment to product development, specifications are subject to change without notice.*



		CX-Q 4K8	CX-Q 8K8
		Max Power	Max Power
8 Independent Channels A, B, C, D, E, F, G, H	70 V	1000 W	1250 W
	100 V	1000 W	1250 W
	8 Ω	1000 W	1250 W
	4 Ω	1000 W	1500 W
	2 Ω	1000 W	1200 W
2 Channels BTL Bridged A+B or C+D Doubles Voltage	140 V	1500 W	2000 W
	200 V	1500 W	2000 W
	8 Ω	1500 W	3000 W
	4 Ω	1400 W	1700 W
	2 Ω	NR*	NR*
2 Channels Parallel AB or CD Doubles Current	70 V	1500 W	2000 W
	100 V	1500 W	2000 W
	8 Ω	1000 W	1250 W
	4 Ω	1250 W	2400 W
	2 Ω	1500 W	2500 W
3 Channel Combined in Parallel ABC Triples Current	8 Ω	1000 W	1250 W
	4 Ω	1500 W	2000 W
	2 Ω	1500 W	2500 W
4 Channels Combined in Bridged/Parallel AB+CD, EF+GH Doubles Current and Voltage	8 Ω	2500 W	4000 W
	4 Ω	3000 W	5000 W
	2 Ω	NR*	NR*
4 Channels Combined in Parallel ABCD Quadruples Current	8 Ω	1000 W	1200 W
	4 Ω	2000 W	2400 W
	2 Ω	2500 W	4000 W
	1 Ω	3000 W	4000 W

**NR\*:** Not Recommended due to excessive current draw  
**Max Power:** 20 ms 1 kHz Sine wave burst, all channels driven  
*Specifications are preliminary and are subject to change without notice.*



# Q-SYS™

## I/O Peripherals



### I/O-8 Flex Channel Expander

The I/O-8 Flex allows for analog I/O deployment to a Q-SYS system either in the rack or remotely located near the source or destination device using only a single, PoE+ network cable.

As part of the Q-SYS Ecosystem, the I/O-8 Flex is fully supported by all Q-SYS Core processors, making it a cost effective expander for the smaller Unified and Integrated Core series. Furthermore, when paired with the Enterprise Cores, the I/O-8 Flex makes it simple to realize a truly centralized processing system.

- **Q-SYS Flex I/O Channels:** Eight channels of analog I/O that can be configured real-time in software as either a mic/line input with phantom power or line level output with single channel granularity.
- **USB Audio Bridging:** A single USB-B device port allows for hassle-free soft codec integration with the Q-SYS Ecosystem either at the rack or remotely in typical BYOD applications.
- **Onboard Control I/O:** 8x8 GPIO and one RS232 allow for additional in-room control options.
- **PoE+ with Auxiliary Power Supply Input:** PoE+ streamlines the workflow of the system designers and installers ensuring that it is both simple and cost effective to deploy anywhere on a standard IT network.

## Q-SYS™

### I/O Peripherals



### I/O Frame

The Q-SYS I/O-Frame and Q-SYS Core 510i (in I/O-Frame mode) provide remote points of connection that interface Q-SYS with other components in the system, including microphones, mixers and power amplifiers. The I/O-Frame offers four available card slots and up to 16x16 audio I/O while the Core 510i (in I/O-Frame mode) offers eight available card slots and up to 128x128 channels of audio connectivity.



### I/O-22

Providing two mic/line inputs and two line outputs, the I/O-22 is ideal for applications such as legislative or judicial chambers, meeting rooms, ballrooms, ancillary zones, classrooms, VIP suites, and stage patching.

- Connects directly to the gigabit ethernet network via redundant Q-LAN ports (RJ-45 Ethernet connectors)
- Powered via PoE (Power over Ethernet) or 24 VDC
- Includes an 8.5 watt mono amplifier to drive a local monitor speaker
- Other connections include a scriptable RS-232 port and eight GPIO ports



# Q-SYS™

## I/O Cards



Mic/Line Analog Input Card



Analog Line Output Card



Analog Telephony Card



AES-3 Digital Input/Output Card



AES-16 Digital Input Card



DataPort™ Output Card



Dante™ Network Audio Bridge Card



AVB Audio Bridge Card

## I/O Cards

The following cards are available for Q-SYS Core processors with card slots, as well as I/O Frames:

- **Mic/Line Analog Input Card (CIML4/CIML4-HP):** Four channels of mic/line-level analog audio input with 48 V phantom power. The input card is also available in a high performance version (CIML4-HP) featuring broadcast quality pre-amps and A/D converters.
- **Analog Line Output Card (COL4):** Four channels of balanced, line level analog output for interfacing between Q-SYS™ and outboard equipment such as amplifiers, recording devices and teleconference systems.
- **Analog Telephony Card (CTEL4):** Four RJ-11 interfaces (POTS) to connect Q-SYS to analog telephony environments.
- **AES-3 Digital Input/Output Card (CAES4):** Four input and four output channels of AES-3 digital audio for interfacing between Q-SYS and digital devices.
- **AES-16 Input Card (CIAES-16):** 16-channel AES/EBU (AES3) 24-bit digital input Q-SYS peripheral card that utilizes IT industry standard RJ45 connectors.
- **DataPort Output Card (COPD4):** Four audio output channels (2 DataPorts) for connection to DataPort equipped QSC amplifiers.
- **Dante™ Audio Bridge Card (CDN64):** Provides a bridge for up to 64 x 64 channels of Dante audio into the Q-SYS Ecosystem for redistribution over larger LAN and WAN IT infrastructures.
- **AVB Audio Video Bridge Card (CAN32):** Provides a digital bridge between any 100MB AVB 1722.1 compliant edge network and the Q-SYS Ecosystem. The CAN32 will support 32 total channels at 48 kHz in three available operating modes: 0/32, 32/0 or 16x16.

# Q-SYS™

## Connected Meeting Room Solution

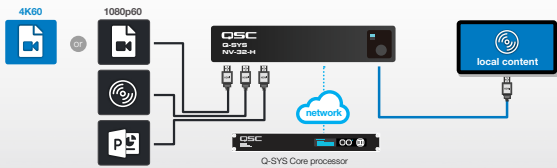


### Q-SYS NV Series

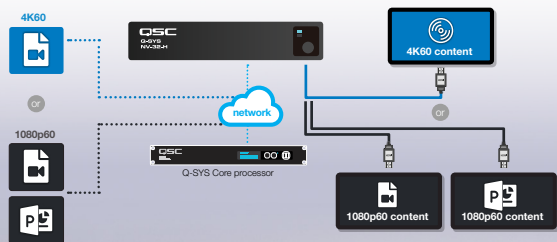
The Q-SYS NV Series (NV-32-H) is a network video endpoint native to the Q-SYS Ecosystem, serving as a multi-stream, software-defined HDMI encoder/decoder that enables network-based video streaming across a standard gigabit infrastructure.

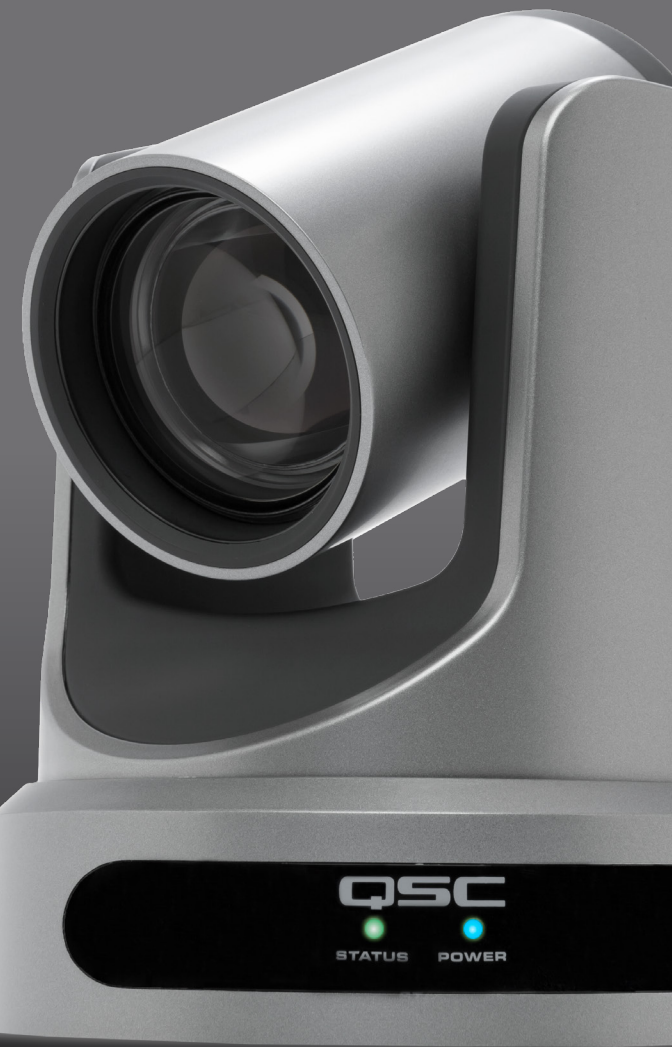
- **Streamlined Video Streaming Integration for the Q-SYS Ecosystem:** The Q-SYS NV Series enables native HDMI video and audio distribution for the Q-SYS Ecosystem without additional control processors, bridges or complicated programming.
- **Optimized for the Connected Meeting Space:** NV Series delivers the right balance of quality (resolutions up to 4K60 4:4:4), latency and network efficiency for meeting room video applications, and offers the scalability to fit the needs of your enterprise.
- **Unique Flexibility and Interoperability in a Single Device:** The NV Series is software-configurable as either an encoder or decoder, and offers I/O capabilities that provide maximum design flexibility with less hardware.
- **Network Optimized Compression Scheme:** Q-SYS Shift™ video compression codec dynamically adjusts network bandwidth consumption according to video content, affording massive network savings for common meeting room content without compromising on full-motion video content.
- **Web Conference Integration:** The NV Series features built-in connectivity for Q-SYS web conference integration, allowing for driverless USB connectivity to a PC for plug-and-play access to Q-SYS audio and conference camera feeds from soft codec applications, reducing tableside hardware (and cost).

## NV-32-H set as encoder



## NV-32-H set as decoder





**QSC**



STATUS



POWER

# Q-SYS™

## Connected Meeting Room Solution



### Q-SYS PTZ-12x72 / PTZ-20x60

- **Highest-quality HD Imaging:** These two 1080p Pan, Tilt, and Zoom (PTZ) conference room cameras cover all room types. The PTZ-12x72 is ideal for small and wide rooms, providing a wide 72° horizontal field of view and 12x optical zoom lens. The PTZ-20x60 is ideal for larger, longer room with a 20x optical zoom lens with a 60° horizontal field-of-view.
- **Eliminates USB Limitations:** A single PoE Ethernet cable simplifies the installation of these network cameras, allowing you to install as many cameras as you need to cover any room or an entire campus. When combined with the networked I/O USB Bridge, you can offer end users USB audio and video feed access points anywhere on the system. Q-SYS bridging peripherals allow you to simultaneously connect virtually any number of PCs to these cameras without complicated and expensive USB switches or extenders.
- **Simplified Control:** View and control video camera feeds from any Q-SYS user control interface. System designers can customize the camera controls to meet their needs, from simple automated conference room use to more comprehensive switching and monitoring controls.

## Q-SYS™

### Connected Meeting Room Solution



#### Q-SYS I/O USB Bridge

- **Standard USB 2.0 Driverless Connection:** The Q-SYS conference room integration solution leverages standard UAC and UVC USB drivers for USB audio and video. No additional software or drivers are required to integrate with modern PC operating systems and soft codec applications such as Google Hangouts Meet™, Zoom™, Skype for Business™, Cisco Webex™ and others.
- **AV Access Everywhere:** Small enough to fit anywhere you need USB access into your Q-SYS installed room AV systems. These PoE network devices provide USB access to a host PC or other user device.
- **Eliminates USB Limitations:** Eliminate the need for complicated and expensive USB switches and extenders for Q-SYS USB/BYOD connectivity. Being a small PoE network peripheral, I/O USB Bridges can easily be mounted closely to every USB host that needs Q-SYS AV access.
- **Redundancy:** The I/O USB Bridge provides two network ports for fully redundant connectivity.



# Q-SYS™

## TSC-G2 Series Touch Screen Controller



- **Capacitive LCD Touch Surface:** In-plane switching (IPS) technology for better off-axis viewing.
- **Power Over Ethernet:** Allows for simplified single cable installation.
- **Universal Mounting Options:** Included accessories for mounting to US standard and European wall and junction boxes.
- **Complete Design Freedom:** Drag and drop any Q-SYS control element from a Q-SYS design schematic into UCI Editor and easily deploy your design to the touch screen.



TSC-55w-G2



TSC-80w-G2



TSC-116w-G2

Panel Dimensions	5.85 x 3.44 x 1.33 in (148.5 x 87.5 x 33.7 mm)	8.8 x 5.8 x 1.4 in (223.5 x 148.4 x 36.3 mm)	12.3 x 7.9 x 1.6 in (313.6 x 201.5 x 39.85 mm)
Viewable screen dimensions (diagonal)	5.5 in (127 mm)	8.0 in (203 mm)	11.6 in (295 mm)
Resolution (pixels)	1280 x 720	1280 x 800	1920 x 1080
Brightness	400 Nits	400 Nits	350 Nits
Aux Power PSU	+24 VDC @ 0.5 A (power supply not included)		
Wall Mount	Yes	Yes	Yes
Table Top	No	Optional table top stand accessory	Optional table top stand accessory
Panel Orientation	Vertical / horizontal	Vertical / horizontal	Vertical / horizontal

As part of QSC’s ongoing commitment to product development, specifications are subject to change without notice.





# Q-SYS™

## TSC Series Touch Screen Controller



### TSC-7t (tabletop) & TSC-7w (wallmount) Touch Screen Controller

- **Consolidate Control:** In addition to the dialing functionality for your conferences, this 7 in screen (800px x 480px) can be used to control a myriad of third-party devices prevalent in boardrooms and meeting rooms via the Core (no additional control processor required).
- **BYOD Bridging Options:** Allows meeting participants to interface 2-way audio from Q-SYS to UC or web conferencing applications like Skype for Business™ and Zoom™ via the touch screen's micro USB connection (TSC-7t model only).
- **Capacitive Touch Technology:** Eliminates physical knobs and buttons increasing product reliability.
- **Single Drop PoE Cabling:** Ethernet connection for simplified wire terminations without the need for additional power wiring.



TSC-7w



TSC-7t

Panel Dimensions	5.6 x 7.8 x 1.5 in (143 x 198 x 38 mm)	5.85 x 3.44 x 1.33 in (148.5 x 87.5 x 33.7 mm)
Resolution (pixels)	800 x 480	800 x 480
Brightness	400 Nits	400 Nits
Aux Power PSU	+24 VDC @ 0.5 A (power supply not included)	
Wall Mount	Yes	No
Table Top	No	Built-in table stand
Panel Orientation	Horizontal	Horizontal

# Q-SYS™

## Feature Licenses

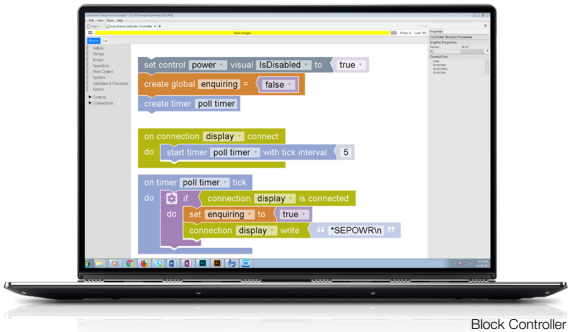


### Q-SYS UCI Editor

Create custom user control interfaces (UCI) for use with the Q-SYS Ecosystem. Design with absolute simplicity and automation in mind, or create comprehensive tuning and troubleshooting monitoring screens. This tool is ideal for system designers who need to create a positive user experience, or for IT administrators who need to make small changes or add additional features to existing UCI designs.

- **No Programming Experience Required:** Build robust UCI screens by simply dragging any Q-SYS DSP or control element from the Q-SYS design schematic into the UCI Editor.
- **Advanced Visual Styling:** Create buttons with custom graphics for on/off/pressed states, utilize page transitions and pop-up screens, import custom backgrounds and corporate logos (graphic file formats including .png, .jpg, .svf, and .gif) and much more.
- **Painless Deployment:** Simple, one-button deployment for UCIs to native Q-SYS touch screens, from a single UCI, or hundreds of UCIs across an enterprise installation.

*Requires license activation to deploy a design with custom UCI onto a Q-SYS Core processor. See [www.qsc.com/control](http://www.qsc.com/control) for more details.*



Block Controller

## Q-SYS Scripting Engine

Q-SYS offers one of the most full featured AV control platforms available, powered by its robust software-based scripting engine.

- **Third Party Control Plugins/Scripts:** Take advantage of a growing library of useful plugins and control scripts for some of the most commonly used elements of today's modern conference room (available for download through Q-SYS Designer Asset Manager). Plugins are designed to easily integrate third party devices with the Q-SYS Ecosystem in a matter of minutes.
- **Full Featured Scripting Component:** Integrate anything from the simplest function to the most complex, nuanced control scenario imaginable. Create custom scripts using modern, accessible scripting languages including Lua, an open-source, IT friendly programming language.
- **Visual Coding Tool:** The new Block Controller component offers a drag-and-drop method for building control scripts within Q-SYS. Based on a concept originally developed by Google and MIT, this open source visual programming tool uses interlocking, graphical blocks to represent common programming concepts. It enables easy composition of sophisticated scripts, especially for novice programmers.

*Requires license activation to deploy a design with custom UCI onto a Q-SYS Core processor. See [www.qsc.com/control](http://www.qsc.com/control) for more details.*



## Q-SYS integration



## Atterotech is now part of QSC

The rapidly growing portfolio of the Q-SYS Ecosystem is now combined with Atterotech's highly innovative portfolio of networked AV endpoints and I/O peripherals. Seamless integration of Dante, AES67 and Bluetooth endpoints into the Q-SYS Ecosystem with full control via QSC-developed Q-SYS control plugins.



## Q-SYS™

### Feature Licenses



The Q-SYS Ecosystem now provides software-based Dante™ network audio integration without the need for additional hardware. As part of a strategic co-development effort with Audinate, QSC leveraged the open architecture and Intel processing headroom of Q-SYS to extend its audio integration capabilities to include Dante.

- **Simple Integration into the Q-SYS Ecosystem:** Add Dante™ network audio to your Q-SYS system without network I/O cards or additional hardware. Dante integrates into the Q-SYS AV&C Ecosystem workflow, offering device discovery, synchronization, control and management for Dante audio within the Q-SYS network, alongside native Q-LAN and other edge networks like AES67, AVB and CobraNet.
- **Software-based Upgrades and Scalability:** The Q-SYS Ecosystem will enable networked Dante integration with a simple software update. In keeping with the QSC commitment to software-based platform expansion, these optional software licenses will allow integrators to right-size and scale the appropriate Dante channel count into new and existing Q-SYS installations.
- **Single Network Infrastructure:** Because Q-SYS operates over standard network infrastructure, Dante data can converge with Q-SYS AV&C data, eliminating the need for complicated network bridging or combining to manage your Q-SYS and Dante connected peripherals.
- **Simplified License Activation:** Intuitive activation methods, including online activation for connected Q-SYS Cores, allow for fast integration.

The laptop screen displays the Q-SYS Reflect Enterprise Manager interface. The left sidebar shows navigation options: MONITORING (selected), MANAGE, and MEMBERS. The main content area shows a list of cores for 'BioCorp Inc.' with columns for Status, Name, System, and Actions. The list shows 9 cores, all with a status of 'Running'. Below the laptop, three Q-SYS audio processing units are shown, labeled 'location a', 'location b', and 'location c', connected by a series of yellow dots.

Status	Name	System	Actions
Running	Core-110f-Exec-boardroom-4564	LA Building 1 Exec Conference	Open
Running	Core-510f-Train-room-2345	LA Building 2	Open
Running	Core-5200-wide-area-paging	Seattle HQ	Open
Running	Core-110f-Exec-boardroom-3451	Seattle Building 2	Open
Running	Core-110f-upper-level	Building 2 (Seattle)	Open
Running	Core510f-multipurpose-room	New York Regional Office 1	Open
Running	Core510f-BGM-allbuilding	Denver Corporate Office	Open
Running	Core-110f-Voip-system-135	Arizona	Open
Running	Core-510-BGM-allbuilding	New Hampshire	Open

## remote monitoring and management

for your AV&C systems

Q-SYS Reflect Enterprise Manager is a powerful, simple-to-use monitoring and management platform designed to assist with the fundamental support needs of IT/AV system administrators.

# Q-SYS REFLECT™ | ENTERPRISE MANAGER

**one** (free)  
**place**  
for all your Cores



## peace-of-mind for out-of-sight Q-SYS Cores

verify your Cores are up and running with the correct design and check/change network settings remotely.



## feature license centralized activation & management

add more Dante channels to your system or upgrade Q-SYS Control capabilities in seconds!

**painless**  
remote AV monitoring  
management



## monitor 1000s of devices across the globe

focus your daily support team activities on the right tasks and access real-time status and event logs from all AV devices.



## centralize management for dynamic, global AV environments

manage security profiles on remote hardware, change audio playlists and update visual signage for meeting room displays



## integrate AV assets with IT systems

stop jumping between different software apps and get a single pane of glass

## feature tiers

### basic

Simple global visibility for Q-SYS Cores

Remote Q-SYS feature license management and deployment

### standard

Keep track of 1000s of AV devices... from anywhere

Centralize updates for security profiles, audio playlists and meeting room signage

Integration with IT systems with a single pane of glass

+ basic tier functionality

## Q-SYS™

### Public Address Peripherals

- **Simple, Integrated Platform:** Q-SYS enables paging with simplified bills of material including playback, record, and store-and-forward.
- **Ample Paging Capacity:** With Cores supporting up to 1024 total network channels.
- **Page Stations:** Built to withstand the rigors of daily use, all page stations are powered over Ethernet and offer secure access, high-fidelity gooseneck or handheld microphones, and capacitive touch buttons.
- **PA Router:** Supports live and delayed paging, scheduled messaging, announcement recording, live page routing, triggered playback, and event scheduling.

### Q-SYS Networked Page Stations

Available with either gooseneck or handheld microphone (push to talk), the Q-SYS network page station is a dual-port network device that is fully configurable from Q-SYS Designer Software. Each station connects to a Q-SYS system via Q-LAN, which handles all audio deliveries to and from the station. Four networked page station models are currently available:

- **PS-1600H/G:** 16 buttons total, including four command buttons (command code A-D). Also includes a numeric keypad and supports security features including automatic logoff time out, logon requirements, and user restrictions
- **PS-1650H/G:** 16 command buttons (command code A-P)





### All Page station features:

- Two Q-LAN network interfaces enabling connection to two switch ports or deployment on two separate networks.
- Capacitive touchpad that offers visible feedback and audible cues including illuminated status indicators.
- Built-in 240 x 64 monochrome graphics LCD display.
- Powered via PoE (Power over Ethernet) or external 24 VDC.
- Rear panel auxiliary audio inputs can accommodate a secondary microphone.
- Auxiliary output can drive a local amplifier, powered loudspeaker or other destination device.
- GPIO interface can be configured to use external events to affect paging operation or be the source of events to affect external control systems.
- Designed for both desktop and wall-mounted installation and include either handheld (H) or gooseneck (G) microphone.

### PS-X

A handheld paging accessory for any Q-SYS™ Page Station provides a secondary remote microphone and is designed to fit into a standard U.S. 2-gang wall box.



PS-X Paging Accessory

# AMPLIFIERS



## MP-A Series Amplifiers



MP-A Series music and paging amplifiers build on a 50-year legacy of QSC amplifier experience by offering incredible amount of flexibility while maintaining high efficiency and low cost of ownership.

FlexAmp™ is the driving force behind all three models in the series, provides each pair of channels a combined power of up to 400 W, which can be shared in any ratio between them.

- **MP-A20V:** one set of channel pairs; each channel pair shares 400 W; total: 400 W
- **MP-A40V:** two sets of channel pairs; each channel pair shares 400 W; total: 800 W
- **MP-A80V:** four sets of channel pairs; each channel pair shares 400 W total: 1600 W

This makes for ample flexibility, especially when paired with the output mode switches that offers settings for 4  $\Omega$ , 8  $\Omega$ , 70 V and 100 V.

An example of MP-A versatility could be an MP-A40V used in a restaurant. Output A of the amp is set up for a 20 W, 70 V load for a pair of ceiling speakers in the bathrooms, while output B is set up in 4  $\Omega$  mode for driving one or two Lo-Z subwoofers with up to 380 W. Output C is set up with the high-pass filter engaged for driving 250 W into 70 V ceiling speakers in the main dining room, while output D is driving 150 W into 8  $\Omega$  surface mount loudspeakers on the patio.

## MP-A Family Features

- Class-D output circuitry and switchmode power supplies
- FlexAmp™: every pair of channels shares a 400 W power supply with each channel capable of delivering the full power
- 1RU amplifier design for rack space savings
- Each channel provides load selection for driving 4 Ω, 8 Ω, 70 V or 100 V loads
- Each channel offers an 80 Hz high-pass filter selection
- Power saving features: Auto-standby (after 28 minutes with seamless auto-ramp when signal returns) and remote standby input



	MP-A20V	MP-A40V	MP-A80V
Channels	2	4	8
Power (all channels driven)			
8 Ω	200 W	200 W	200 W
4 Ω	200 W	200 W	200 W
70 V	200 W	200 W	200 W
100 V	200 W	200 W	200 W
FlexAmp Technology	400 W for a pair of adjacent channels (1-2, 3-4, 5-6, 7-8)		



## SPA Series Amplifiers



The SPA Series are half-rack 1RU, convection cooled power amplifiers, delivering two or four channels of power that can be bridged to supply up to 350 W per channel pairs into 70 V or 100 V. The SPA2-60 and SPA4-60 will deliver 60 watts per channel, while the SPA4-100 will deliver 100 W per channel and SPA2-200 will deliver up to 200 W per channel into 4Ω and 8Ω. Utilizing an advanced Class-D amplifier design and universal power supply, the SPA Series are amazingly efficient, allowing them to be convection cooled and ENERGY STAR® qualified with quiet auto-ramp standby functionality. SPA Series amplifiers are housed in an unobtrusive chassis with unique mounting hardware enabling rack, table and wall mounting capabilities.

- Up to 200 W into 4 Ω and 8 Ω, and up to 350 W into 70 V and 100 V.
- **ENERGY STAR® qualified amplifier:** Efficient class-D amplifiers that conserve energy and require no active cooling, so they reduce operational costs.
- **Bridgeable outputs for higher power:** Bridging the outputs of the SPA Series amplifiers provide up to 400 W into low impedance, and 350 W into 70 V or 100 V offering outstanding flexibility.
- **Auto-Ramp provides quiet startup and power-down:** Energy Star® Auto-Ramp circuitry ensures quiet and fast power up from Standby and seamless power-down following 25 minutes of inactivity, dramatically reducing power consumption.
- **Rack-mountable 1RU, half rack width enclosure:** Can be mounted in half RU reducing rack space requirements. In addition their clever joining inbrackets in enable easy under-table and wall-mounting.

	SPA2-60	SPA4-60	SPA2-200	SPA4-100
Stereo Mode				
8 $\Omega$	60 W	60 W	200 W	100 W
4 $\Omega$	60 W	60 W	200 W	100 W
Bridged Outputs				
8 $\Omega$ & 4 $\Omega$	200 W	100 W continuous	400 W	200 W
70 V	250 W	125 W	350 W	175 W*
100 V	250 W	125 W	350 W	175 W*

\*Peak power 250 W

All mounting hardware included



## CXD Series Processing Amplifiers



Representing a revolutionary advancement in amplifier design, CXD Series amplifiers feature powerful onboard DSP and deliver robust, high fidelity power housed in a 2RU chassis. Designed with integrators in mind, the CXD Series includes three models (CXD4.2, CXD4.3 & CXD4.5) capable of driving a wide range of loudspeaker configurations including 70 V and 100 V systems. Flexible Amplifier Summing Technology™ (FAST) actively distributes total amplifier power across one, two, three or all four outputs enabling amp channels to be paralleled or bridged for maximum current and voltage output.

- Up to 5,000 W continuous and 8,000 W peak with 70 V/100 V direct drive on the CXD4.3 and CXD4.5.
- Flexible Amplifier Summing Technology™ (FAST) permits total amplifier power to be distributed across one, two, three or all four channels.
- Onboard full function loudspeaker processing including crossover, EQ, limiting and alignment delay eliminate the need for outboard loudspeaker processors.
- Intrinsic Correction™ ensures optimum sonic performance of QSC loudspeakers.
- Preset Wizard simplifies setup, providing system design tools and loudspeaker selection.
- Default factory presets are available, or a user can modify and store as one of 50 user presets.
- Four Euroblock inputs and four Euroblock touch-proof speaker outputs.



		CXD4.2	CXD4.3	CXD4.5
		Peak	Peak	Peak
<b>4 Independent Channels A, B, C, D</b>	70 V	N/A	500W	1000W
	100 V	N/A	625 W	1250 W
	8 Ω	500 W	900 W	1200 W
	4 Ω	700 W	1400 W	2000 W
	2 Ω	625 W	1200 W	1600 W
<b>2 Channels BTL Bridged A+B or C+D Doubles Voltage</b>	8 Ω	1200 W	2400 W	4000 W
	4 Ω	1500 W	NR*	NR*
	2 Ω	NR*	NR*	NR*
<b>2 Channels Parallel AB or CD Doubles Current</b>	8 Ω	500 W	1300 W	1250 W
	4 Ω	950 W	2000 W	2400 W
	2 Ω	1200 W	2500 W	4000 W
<b>3 Channels Combined in Parallel ABC Triples Current</b>	8 Ω	500 W	1400 W	1400 W
	4 Ω	950 W	2400 W	2500 W
	2 Ω	1800 W	3500 W	4500 W
<b>4 Channels Combined in Bridged/Parallel AB+CD Doubles Current and Voltage</b>	8 Ω	1600 W	3500 W	4500 W
	4 Ω	2500 W	5000 W	7500 W
	2 Ω	NR*	NR*	NR*
<b>4 Channels Combined in Parallel ABCD Quadruples Current</b>	8 Ω	500 W	1400 W	1600 W
	4 Ω	1000 W	3000 W	3000 W
	2 Ω	1700 W	5000 W	5300 W

NR\* = Not Recommended due to excessive current draw

BOLD = Optimal configuration for the load and channel count

- PowerLight universal switchmode power supply with Power Factor Correction for highest efficiency, improved audio performance, and low weight.
- Amp Navigator software (via USB connection) running on a PC or Mac for control, monitoring, and amplifier management. Amp Navigator also provides on-line and off-line editing of presets and loudspeaker profiles along with library management.

As part of QSC's ongoing commitment to product development, specifications are subject to change without notice.



## CX Series Amplifiers



CX Series are designed for installation applications requiring premium sound quality and high output. Recognized by sound contractors worldwide for their reliability, CX Series amplifiers feature PowerLight™ power supply technology reducing weight, eliminating AC mains hum and improving audio quality. The highly efficient power supply also draws less power and produces less heat resulting in added energy savings. They also feature advanced amplifier control and monitoring for Q-SYS™ Ecosystem.

- Active inrush limiting gently brings amplifiers online eliminating the need for costly AC power sequencers.
- Front-panel gain controls with 1 dB detents allow for precise level adjustment and are protected by tamper-proof security covers.
- DataPort connections enable remote control and monitoring of amplifier functions via Q-SYS.
- Selectable clip limiters and infra-sonic filters protect loudspeakers from damage due to distortion and overexcursion.
- DataPort or EuroBlock connector Inputs and touch-proof barrier-strip outputs (2 ch models also include XLR inputs and 8 channel models feature EuroBlock connector outputs).
- Sleep (Standby) mode for energy saving efficiency.
- Transformer-less 70 /100 volt models available.



CX 2-channel models



CX 4-channel models



CX 8-channel models

Watts per channel

Model	70 V*	8 Ω	4 Ω	2 Ω*
CX302V	250	–	–	–
CX602V	440	550	–	–
CX1202V	1000	700	1100	–
CX302	–	200	325	600
CX502	–	300	500	800
CX702	–	425	700	1200
CX902	440	550	900	1500
CX1102	1000	700	1100	1700
CX204V	220	–	–	–
CX254	–	170	250	450
CX404	–	250	400†	–
CX108V	100	–	–	–
CX168	–	90	130	–

All channels driven. 20 Hz – 20 kHz, 0.05% THD \*1 kHz, 0.05% THD  
 †1 kHz, 0.1% THD

As part of QSC’s ongoing commitment to product development, specifications are subject to change without notice.



## CMXa Series Amplifiers



CMXa Series amplifiers represent an economical and rugged power amplifier solution for installed sound applications. There are four CMXa models to choose from (CMX 300Va, CMX 500Va, CMX 800Va, and CMX 2000Va). Flexible input and output connectors make them ideal for use in projects such as performance halls, houses of worship, sport clubs, gymnasiums, dance venues, pubs, and FGM/BGM systems. CMXa Series provides unmatched performance and user options at an affordable price point.

- Flexible output loading options enable low impedance loads comfortably down to  $2\ \Omega$ , and in some configurations will effortlessly drive 70 / 100 V lines.
- Recessed front panel gain controls with 1 dB detents for fast and accurate level settings.
- Security plate cover for gain controls to provide tamper-proof protection.
- Recessed rear DIP switches for easy selection between stereo, parallel, or bridged mode operation, and the additional choice of enabling/disabling low frequency filter protection.
- Balanced XLR, TRS or barrier strip parallel inputs and NL4 or detachable block output connectors.



CMXa 2RU models



CMX 2000Va (3RU models)

Watts per channel

	stereo		bridged		stereo		bridged	
model	70 V	100 V	70 V	100 V	8 Ω	4 Ω	2 Ω*	4 Ω*
CMX 300Va	-	-	600	-	200	300	430	830
CMX 500Va	-	-	1200	600	300	500	700	1400
CMX 800Va	400	-	2000	2300	500	800	1200	2400
CMX 2000Va	2500	1000	-	3600	1100	2000	2500	5000

1 kHz, 0.1% THD    \*1 kHz, 1% THD

As part of QSC's ongoing commitment to product development, specifications are subject to change without notice.



## ISA Series Amplifiers



ISA Series amplifiers are an ideal, cost-effective solution for fixed installation applications requiring distributed loudspeakers. There are seven models in the line, four low impedance models (ISA 280, ISA 450, ISA 750, ISA 1350) rated down to 2  $\Omega$  loads and three inTi in versions (ISA 300Ti, ISA 500Ti, ISA 800Ti) featuring isolated transformers for 25, 70 and 100 V distributed audio systems. The DataPort V2 Lite connection facilitates the use of amplifier accessories (XC-3, LF-3 and SF-3) providing economical crossover and subwoofer filtering solutions.

- Up to 2400 W total output power
- 3RU chassis with rear-mounted gain controls featuring 2 dB detents
- Independent, defeatable clip limiters reduce distortion and protect loudspeakers
- Selectable high-pass filters protect against transformer saturation and driver overexcursion
- Includes extensive DC, infrasonic, thermal overload, and short circuit protection
- XLR and 3-pin block input connectors and touch-proof barrier strip outputs



ISA 500Ti

Watts per channel

Model	70 V* / 100 V	8 Ω**	4 Ω**	2 Ω†
ISA280	-	185	280	430
ISA450	-	260	425	700
ISA750	-	450	650	1200
ISA1350	1500†	800	1300	2000
ISA300Ti	300	185	280	430
ISA500Ti	500	260	425	700
ISA800Ti	800	450	650	1200

\*50 Hz – 16 kHz, 0.5% THD    \*\*20 Hz – 20 kHz, 0.1% THD    †1 kHz, 1% THD  
†Direct Output, 70V, less than 0.1% THD, 20 Hz – 20 kHz, +0/-0.3 dB

As part of QSC’s ongoing commitment to product development, specifications are subject to change without notice.



LOUDSPEAKERS





## AcousticCoverage™ Series Loudspeakers

### Ceiling-mount



AcousticCoverage™ Series is designed to offer integrators a cost effective solution for applications where voice reinforced coverage is of primary concern, while providing improved musicality often not seen in typical BGM class products. Applications for AcousticCoverage Series loudspeakers include wide area paging systems, background music, distance conferencing reinforcement, healthcare facilities, concourses, transportation terminals and more.

- High quality transducers provide exceptional clarity through the critical voice range
- Ported baffle for increased low frequency extension
- Low saturation 70/100 V transformers with 8  $\Omega$  bypass
- 4-pole Euroblock connector eases system wiring
- Advanced voicing filter sets using Intrinsic Correction™ available through either the Q-SYS™ Ecosystem or CXD Series processing amplifiers
- White (RAL 9010) with UV inhibitors to match complimenting QSC loudspeaker series
- Complete EASE, CAD & BIM information available online

**AC-C2T****AC-C4T**

Frequency Range (-10 dB)	80 Hz – 20 kHz	70 Hz – 16 kHz
Power Capacity <sup>1</sup>	16 W	16 W
Broad-Band Sensitivity <sup>2</sup>	86.5 dB	89 dB
Coverage Angle	150° (500 Hz - 5 kHz)	140° (500 Hz - 5 kHz)
Output <sup>3</sup> (Peak SPL @ 1M)	104.5 dB	107 dB
Driver Information	2.5 in Polypropylene cone with butyl rubber surround	4.5 in Polypropylene cone with butyl rubber surround
Rated Impedance	8 Ω	8 Ω
Input Connectors	Euroblock connector with parallel output terminals	Euroblock connector with parallel output terminals
Baffle Material	Painted ABS polymer	Painted ABS polymer
Cut-out Dimension	Ø 7.3 in (Ø 186 mm)	Ø 7.3 in (Ø 186 mm)
Product Dimension	Ø 8.4 in x 7.9 in (Ø 214 x 201 mm)	Ø 8.4 in x 7.9 in (Ø 214 x 201 mm)
Net Weight	4.2 lb / 1.9 kg	4.9 lb / 2.22 kg

<sup>1</sup> IEC60268-1 noise signal for 2 Hrs.

<sup>2</sup> On-Axis, free-field sensitivity, 2.83V, 1 m.

<sup>3</sup> Calculated from rated noise voltage and sensitivity.

As part of QSC's ongoing commitment to product development, specifications are subject to change without notice.



## AcousticCoverage™ Series Loudspeakers

### Ceiling-mount



Frequency Range (-10 dB)	65 Hz – 20 kHz	52 Hz – 20 kHz
Power Capacity <sup>1</sup>	30 W	80 W
Broad-Band Sensitivity <sup>2</sup>	89 dB	89 dB
Coverage Angle	110° (500 Hz - 5 kHz)	100° (500 Hz - 5 kHz)
Output <sup>3</sup> (Peak SPL @ 1M)	110 dB	114 dB
Driver Information		
LF	6.5 in polypropylene cone with butyl rubber surround	8 in treated paper cone
HF	0.86 in silk dome tweeter, coaxially mounted	0.86 in silk dome tweeter
Rated Impedance	8 Ω	8 Ω
Input Connectors	Euroblock connector with parallel output terminals	Euroblock connector with parallel output terminals
Baffle Material	Painted ABS polymer	Painted ABS polymer
Cut-out Dimension	Ø 9 in (Ø 229 mm)	Ø 11.2 in (Ø 285 mm)
Product Dimension	Ø 10.24 x 8.4 in (Ø 260 x 213 mm)	Ø 12.4 x 11.3 in (Ø 316 x 288 mm)
Net Weight	7.6 lb / 3.5 kg	11.5 lb / 5.2 kg

<sup>1</sup> IEC60268-1 noise signal for 2 Hrs.

<sup>2</sup> On-Axis, free-field sensitivity, 2.83V, 1 m.

<sup>3</sup> Calculated from rated noise voltage and sensitivity.

## Non-UL Versions



Frequency Range (-10 dB)	62 Hz – 18 kHz	53 Hz – 20 kHz
Power Capacity <sup>1</sup>	6 W	6 W
Broad-Band Sensitivity <sup>2</sup>	93 dB	96 dB
Coverage Angle	140° (500 Hz - 5 kHz)	130° (500 Hz - 5 kHz)
Output <sup>3</sup> (Peak SPL @ 1M)	107 dB	110 dB
Driver Information	4 in treated paper cone	8 in treated paper cone
Rated Impedance	8 Ω	8 Ω
Input Connectors	Bare wire transformer taps	Bare wire transformer taps
Baffle Material	Painted ABS polymer	Painted ABS polymer
Cut-out Dimension	Ø 9 in (Ø 228 mm)	Ø 11.06 in (Ø 281 mm)
Product Dimension	Ø 10.25 x 5.8 in (Ø 260 x 148 mm)	Ø 12.3 x 4.2 in (Ø 313 x 107 mm)
Net Weight	2.6 lb / 1.2 kg	3.4 lb / 1.5 kg

<sup>1</sup> IEC60268-1 noise signal for 2 Hrs.

<sup>2</sup> On-Axis, free-field sensitivity, 2.83V, 1 m.

<sup>3</sup> Calculated from rated noise voltage and sensitivity.

As part of QSC's ongoing commitment to product development, specifications are subject to change without notice.



## AcousticDesign™ Series Loudspeakers

### Ceiling-mount



The second generation of AcousticDesign™ Series ceiling-mount loudspeakers are high quality 70/100 V, two-way, full-range systems ideal for a wide variety of foreground, background, paging, and distance-conferencing applications.

#### Designer Friendly:

- Available in white (RAL 9010) or black (RAL 9011)
- Paintable grill & bevel
- Deliberate 23 mm bezel width to match T-bar
- Complete EASE, CLF, CAD & BIM information available online

#### Application Diverse:

- UL listed (UL 1480 / UL2043)
- EN54-24 for use in voice alarm systems
- UV Inhibitors in all white models
- Powder-coated grills
- Weather-treated cones



### Install Ready

- SnapFit magnetic grills
- Low saturation 70/100 V transformers
- 16  $\Omega$  low impedance bypass
- 3x long-travel dog-ears
- Screw-down Euro block connector with loop-through
- Removable conduit cover with no loose screws
- Low profile, short back-can versions available

### Factory Optimized:

- **DMT (Directivity Matched Transition™):** Ensures smooth, uniform frequency response over the rated coverage area
- **Intrinsic Correction™:** When paired with QSC network or DSP amplifiers, custom QSC loudspeaker voicings help to further reduce installation and setup time by taking the tuning process out of the installers' hands.

## AcousticDesign™ Series Loudspeakers

### Ceiling-mount



**AD-C4T-BK**  
**AD-C4T-WH**



**AD-C4T-LP**

Frequency Range (-10 dB)	70 Hz – 20 kHz	70 Hz – 20 kHz
Power Capacity <sup>1</sup>	30 W	30 W
System Sensitivity <sup>2</sup>	87.5 dB	87 dB
Coverage Angle	150° conical DMT	150° conical DMT
Output <sup>3</sup> (Peak SPL @ 1M)	108 dB	108 dB
Driver Information		
LF	4.5 in weather treated paper cone woofer	4.5 in weather treated paper cone woofer
HF	0.75 in aluminum dome tweeter	0.75 in aluminum dome tweeter
Rated Impedance	16 Ω	16 Ω
UL1480 and UL2043 certified	Yes	Yes
EN54-24 Type A	Yes	No
Input Connectors	4-pin Euro terminals	4-pin Euro terminals
Cut-out Dimension	Ø 7.68 in (Ø 195 mm)	Ø 9.65 in (Ø 245 mm)
Product Dimension	Ø 9.06 in x 6.93 in (Ø 230 x 176 mm)	Ø 11.02 in x 3.93 in (Ø 280 x 100 mm)
Net Weight	6.4 lb / 2.9 kg	6.6 lb / 3 kg

<sup>1</sup> IEC60268-1 noise signal for 2 Hrs.

<sup>2</sup> On-Axis, free-field sensitivity, 2.83V, 1 m.

<sup>3</sup> Calculated from rated noise voltage and sensitivity.

As part of QSC's ongoing commitment to product development, specifications are subject to change without notice.







**AD-C6T-BK**  
**AD-C6T-WH**



**AD-C6T-LP**

Frequency Range (-10 dB)	65 Hz – 20 kHz	65 Hz – 20 kHz
Power Capacity <sup>1</sup>	60 W	60 W
System Sensitivity <sup>2</sup>	88 dB	88 dB
Coverage Angle	135° conical DMT	135° conical DMT
Output <sup>3</sup> (Peak SPL @ 1m)	112 dB	112 dB
Driver Information		
LF	6.5 in weather treated paper cone woofer	6.5 in weather treated paper cone woofer
HF	1 in aluminum dome tweeter	1 in aluminum dome tweeter
Rated Impedance	16 Ω	16 Ω
Input Connectors	4-pin Euro terminals	4-pin Euro terminals
UL1480 and UL2043 certified	Yes	Yes
EN54-24 Type A	Yes	No
Cut-out Dimension	Ø 9.65 in (Ø 245 mm)	Ø 12 in (Ø 305 mm)
Product Dimension	Ø 11.02 in x 9.32 in (Ø 280 x 237 mm)	Ø 13.37 in x 3.95 in (Ø 340 x 100 mm)
Net Weight	9.5 lb / 4.3 kg	9.3 lb / 4.2 kg

<sup>1</sup> IEC60268-1 noise signal for 2 Hrs.

<sup>2</sup> On-Axis, free-field sensitivity, 2.83V, 1 m.

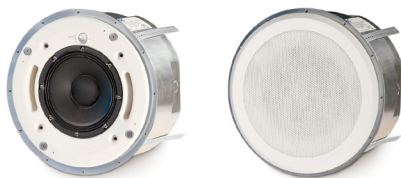
<sup>3</sup> Calculated from rated noise voltage and sensitivity.

As part of QSC's ongoing commitment to product development, specifications are subject to change without notice.



## AcousticDesign™ Series Loudspeakers

### Ceiling-mount



### AD-C820R/S | AD-C821R/S

The AD-C820R/S and AD-C821R/S (R for Round Grill and S for Square Grill) loudspeaker systems are designed for ceiling mounted loudspeaker applications requiring high SPL output. The AD-C820R/S Systems ship with the AD-C800BB backcan and are perfect for pre-installed applications.

The AD-C821R/S systems incorporate a fully integrated, factory sealed enclosure and use indog-ear in style mounting - perfect for blind mount installations. Both models also include a set of tile rails and C-rings to complete the installation.

- 8-inch low-frequency woofer with 1.4-inch diaphragm coaxially-mounted compression driver
- 52 Hz – 18 kHz frequency range
- 200 W continuous power rating
- 90° conical coverage
- 70 /100 V multi-tap transformer included with low impedance bypass
- Ceramic input screw terminal complies with European safety standards
- AD-C820 transducer/baffle assembly for separated backcan installation
- AD-C821 designed as a fully integrated blind-mount system

**AD-C820/C821**

Effective frequency range	52 Hz – 18 kHz
Power Capacity <sup>1</sup>	200 W (100 hrs)
Sensitivity <sup>2</sup>	91 dB
Nominal Coverage	90° conical
Output <sup>3</sup> (Peak SPL @ 1M)	120 dB
Driver Information	
LF	8 in weather treated, cone woofer
HF	1.4 in coaxial compression driver
Rated Impedance	16 $\Omega$
Input Connectors	AD-C820: Ceramic block AD-C821: 4-pin Euroblock Fire protective sub-chamber
Enclosure	UL-rated steel backcans
Net Weight (each)	17.5 lb / 7.9 kg
Product Dimensions	Ø 14.9 in (Ø 379 mm) x 8.3 in (211 mm)

<sup>1</sup> Continuous IEC specified test signal, 2 hours unless otherwise stated.

<sup>2</sup> Based on nominal impedance, measured in full space. 1 W @ 1 m.

<sup>3</sup> Calculated using specified power capacity and system sensitivity. 6 dB peak-to-average signal ratio assumed.



### **AD-C1200**

The AD-C1200 loudspeaker is designed for ceiling mounted loudspeaker applications requiring high SPL output. The AD-C1200 features coaxial LF/HF transducers, a transformer and a crossover network factory-mounted on a steel baffle. The baffle is designed to mount to the QSC enclosure (AD-C1200BB) or to any 2.5-inch enclosure using industry-standard transducer / baffle mounting points.



### **AD-C81Tw**

The AD-C81Tw is a ceiling mounted subwoofer designed for use with both ceiling-mount and surface mounts AcousticDesign Series loudspeakers. Like the smaller format, full-range models, the AD-C81Tw utilizes dog-ear mounting tabs and ships complete with C-rings and tile rails.

**AD-C81Tw****AD-C1200**

Frequency Range (-10 dB)	28 Hz – 208 Hz	37 Hz – 18 kHz
Power Capacity <sup>1</sup>	250 W (100 hrs)	300 W (100 hrs)
System Sensitivity <sup>2</sup>	94 dB	93 dB
Coverage Angle	N/A	85° conical
Output <sup>3</sup> (Peak SPL @ 1M)	118 dB	124 dB
Driver Information		
LF	8 in weather treated, polypropylene cone woofer, rubber surround	12 in weather treated cone woofer, 75 mm voice coil, ferrite magnet
HF	N/A	1.75 in co-axial compression driver
Rated Impedance	8 Ω	16 Ω
Input Connectors	Ceramic block or 4-pin Euro terminals, fire protective sub-chamber	Ceramic block terminals Fire protective sub-chamber
Cut-out Dimensions	Ø 11.65 in (Ø 296 mm)	
Product Dimensions	Ø 12.6 x 14.5 in (Ø 321 x 368 mm)	(HWD) 23 x 18 x 15.5 in (584 x 454 x 393 mm)
Enclosure	Steel back can	
Net Weight (each)	7.5 lb / 3.4 kg	78 lb / 35.3 kg

<sup>1</sup> Continuous IEC specified test signal, 2 hours unless otherwise stated.

<sup>2</sup> Based on nominal impedance, measured in full space. 1 W @ 1 m.

<sup>3</sup> Calculated using specified power capacity and system sensitivity. 6 dB peak-to-average signal ratio assumed.

As part of QSC's ongoing commitment to product development, specifications are subject to change without notice.



## AcousticDesign™ Series Loudspeakers

### Pendant-mount



AcousticDesign™ Series pendant-mount loudspeakers are high quality 70/100 V, two-way, full-range systems ideal for a wide variety of foreground and background business music applications.

#### Designer Friendly:

- Deliberately unobtrusive industrial design
- Available in white (RAL 9010) or black (RAL 9011)

#### Application Diverse:

- Lightweight rugged ABS construction
- UV Inhibitors in all white models
- IP-54 rating for dust and splash resistance

#### Install Ready:

- SnapFit magnetic grills
- Low saturation 70/100 V transformers
- 16  $\Omega$  low impedance bypass
- Sealable input weather cup – keeps moisture away from wiring

#### Factory Optimized:

- **DMT (Directivity Matched Transition™):** Ensures smooth, uniform frequency response over the rated coverage area.
- **Intrinsic Correction™:** When paired with QSC network or DSP amplifiers, custom QSC loudspeaker voicings help to further reduce installation and setup time by taking the tuning process out of the installers' hands.

## AcousticDesign™ Series Loudspeakers

Pendant-mount



Effective frequency range	70 Hz – 20 kHz	65 Hz – 20 kHz
Power Capacity <sup>1</sup>	30 W	60 W
System Sensitivity <sup>2</sup>	87.5 dB	88 dB
Coverage Angle	150° conical DMT	140° conical DMT
Output <sup>3</sup> (Peak SPL @ 1M)	108 dB	112 dB
Driver Information		
LF	4.5 in weather treated paper cone woofer	6.5 in weather treated paper cone woofer
HF	0.75 in aluminum dome tweeter	1 in aluminum dome tweeter
Rated Impedance	16 Ω	16 Ω
Input Connectors	4-pin Euro terminals	4-pin Euro terminals
Net Weight	6.5 lb / 2.9 kg	9 lb / 4.1 kg
Product Dimensions	Ø 9.3 x 10.7 in (Ø 237 x 272 mm)	Ø 11.3 x 12.7 in (Ø 287 x 323 mm)

<sup>1</sup> Free-field, -10 dB from on-axis sensitivity.

<sup>2</sup> On-Axis, free-field sensitivity, 2.83V, 1 m.

<sup>3</sup> Calculated from rated noise voltage and sensitivity.

As part of QSC's ongoing commitment to product development, specifications are subject to change without notice.



## AcousticDesign™ Series Loudspeakers

### Pendant-mount



### AD-P Halo

The QSC AD-P.HALO is a purpose-built, integrated SUB/SAT pendant loudspeaker system, featuring an integrated 6.5" subwoofer and four 2.75" satellite transducers in a single enclosure. Designed for business music installations where music drives the atmosphere, it features a 200 W RMS power rating with significant dynamic headroom that far surpasses the performance of traditional two-way, pendant-mount loudspeakers.

- **True All-in-One Solution with No Assembly Required:** The AD-P.HALO is purpose-designed and fully integrated in a single-enclosure pendant that is ready to hang right out of the box. This hassle-free philosophy helps simplify and expedite the installation, which can lower the overall project costs and allow the integrator to focus on the sound.
- **Ultimate Performance and Musicality:** The 200 W RMS power rating provides significant dynamic headroom that delivers high-performance and musicality to high-end retail or hospitality applications where sound drives the atmosphere
- **AcousticDesign Series Loudspeakers:** AD-P.HALO extends the AcousticDesign Series portfolio of loudspeakers, which offer sleek aesthetic design and high-quality sound across multiple form factors (ceiling-mount, pendant-mount and surface-mount).
  - *Mix & Match Capabilities:* AD Series maintain consistent sonic characteristics across all form factors to provide design flexibility for any installed application.
  - *Intrinsic Correction™:* When paired with QSC network or DSP amplifiers, custom QSC loudspeaker voicings help to further reduce installation and setup time by taking the tuning process out of the installers' hands.



**AD-P.HALO-BK / AD-P.HALO-WH**

Effective frequency range <sup>1</sup>	40 Hz – 20 kHz
Rated noise power <sup>5</sup>	100 W
Sensitivity <sup>2</sup>	86 dB
Coverage <sup>2,3</sup>	110° (conical)
Output <sup>4</sup> (Peak SPL @ 1 m)	111 dB
Driver Information:	
LF	One 6.5 in. dual voice subwoofer, paper cone
HF	Four 2.75 in. full-range speakers, paper cone
Transformer	100 W, 6 Ω bypass

1. -10 dB from rated sensitivity, anechoic chamber, 2.45 V, 1 m, on reference axis

2. From Thiele-Small parameters @ 2.45, 1 m

3. 500 Hz - 5 kHz

4. Calculated from rated noise power and sensitivity

5. IEC, 2hrs, 6 Ω nominal impedance

## AcousticCoverage™ Series Loudspeakers

Surface-mount



AcousticCoverage™ Series is designed to offer integrators a cost effective solution for applications where voice reinforced coverage is of primary concern, while providing improved musicality often not seen in typical BGM class products. Applications for AcousticCoverage™ loudspeakers include wide area paging systems, background music, distance conferencing reinforcement, healthcare facilities, concourses, transportation terminals and more.

- High quality transducers provide exceptional clarity through the critical voice range
- Ported baffle for increased low frequency extension
- Low saturation 70/100 V transformers with 8  $\Omega$  bypass
- 4-pole Euroblock connector eases system wiring
- Advanced voicing filter sets using QSC's Intrinsic Correction™ available through either the Q-SYS™ Ecosystem or CXD Series amplifiers
- Spring-loaded and rotatable logo on grill for installation convenience in either horizontal or vertical deployments
- Complete EASE, CAD & BIM information available online



**AC-S4T-BK  
AC-S4T-WH**

**AC-S6T-BK  
AC-S6T-WH**

Effective Frequency Range (-10 dB)	70 Hz – 20 kHz	60 Hz – 20 kHz
Power Capacity <sup>1</sup>	16 W	30 W
System Sensitivity <sup>2</sup>	85 dB SPL	86 dB SPL
Coverage Angle	130° (500 Hz - 5 kHz)	130° (500 Hz - 5 kHz)
Output <sup>3</sup> (Peak SPL @ 1M)	103 dB	107 dB
Driver Information	4.5 in polypropylene woofer with 1 in voice-coil	6.5 in polypropylene woofer with 1 in voice-coil
Rated Impedance	8 Ω	8 Ω
Input Connectors	Euroblock connector with parallel output terminals	Euroblock connector with parallel output terminals
Baffle Material	Painted ABS polymer	Painted ABS polymer
Net Weight	5.2 lb / 2.4 kg	8.3 lb / 3.8 kg
Product Dimensions (HWD)	9.1 x 6.3 x 5.9 in (230 x 160 x 150 mm)	11.9 x 8.5 x 7.8 in (303 x 215 x 197 mm)

<sup>1</sup> IEC60268-1 noise signal for 2 Hrs.

<sup>2</sup> On-Axis, free-field sensitivity, 2.83V, 1 m.

<sup>3</sup> Calculated from rated noise voltage and sensitivity.

## AcousticDesign™ Series Loudspeakers

### Column Surface-mount

The all new AcousticDesign™ Series column surface-mount loudspeakers are high quality 70/100 V or 8  $\Omega$  bypass, full-range systems ideal for a wide variety of foreground and background applications with acoustically-challenged environments.

#### Designer Friendly:

- Deliberately unobtrusive industrial design
- Available in white (RAL 9010) or black (RAL 9011)
- Paintable enclosure and grill
- Complete EASE, CLF, CAD & BIM information available online

#### Application Diverse:

- Rugged aluminum construction
- UV Inhibitors in all white models
- IP-54 rating for dust and splash resistance
- Powder-coated grills and weather-treated cones

#### Install Ready

- Close to wall pan/tilt bracket included
- Low saturation 70/100 V transformers
- 8  $\Omega$  low impedance bypass
- Selectable broad/narrow beam contour (AD-S162T only)
- Screw-down Euro block connector with loop-through
- Sealable input weather cup – keeps moisture away from wiring



AD-S402T



AD-S802T



AD-S162T



Effective Frequency Range <sup>1</sup>	90 Hz - 17 KHz	90 Hz - 17 kHz	90 Hz - 17 kHz
Power Capacity <sup>2</sup>	120 W	120 W	200 W
System Sensitivity <sup>3</sup>	87 dB	87 dB	88 dB wide 89 dB narrow
Coverage Angle Horizontal (-6 dB)	160 deg (1 kHz - 10 kHz)	160 deg (1K - 10 kHz)	160 deg wide 160 deg narrow
Coverage Angle Vertical (-6 dB)	20 deg (1 kHz - 17 kHz)	20 deg (1 kHz - 10 kHz)	30 deg wide 15 deg narrow
Output <sup>4</sup> (Peak SPL @ 1M)	114 dB	114 dB	117 dB wide 118 dB narrow
Driver Information	8x 2.5 in weather treated paper cone woofer	(x8) 2.5 in weather treated paper cone woofer	(x16) 2.5 in weather treated paper cone woofer
Rated Impedance	8 Ω	8 Ω	8 Ω
Input Connectors	4-pin Euroblock	4-pin Euro terminal	4-pin Euro terminal
Enclosure	Aluminum	Aluminum	Aluminum
Ingress protection	IP-54	IP-54	IP-54
Net Weight	14.4 lb / 6.55 kg	14.4 lb / 6.55 kg	25 lb / 11.36 kg
Product Dimensions (HWD)	23.4 x 5.2 x 5 in (595 x 131 x 126 mm)	23.4 x 5.2 x 5 in (595 x 131 x 126 mm)	45.8 x 5.2 x 5 in (1162 x 131 x 126 mm)

<sup>1</sup> Free-field, -10 dB from on-axis sensitivity.

<sup>2</sup> IEC60268-1 noise signal for 2 Hrs.

<sup>3</sup> On-Axis, free-field sensitivity, 2.83V, 1 m.

<sup>4</sup> Calculated from rated noise voltage and sensitivity.

As part of QSC's ongoing commitment to product development, specifications are subject to change without notice.



## AcousticDesign™ Series Loudspeakers

### Surface-mount



The second generation of AcousticDesign™ Series surface-mount loudspeakers are professional, 70/100V, two-way, full-range systems ideal for a wide variety of foreground, background, ancillary and sound reinforcement. Ease-of-installation was the driving principle behind these new surface loudspeakers, culminating in the patented X-Mount™ wall bracket with best-in-class functionality and repeatable angles.

#### Designer Friendly:

- Available in white (RAL 9010) or black (RAL 9011)
- Paintable grill & enclosure
- Complete EASE, CLF, CAD & BIM information available online

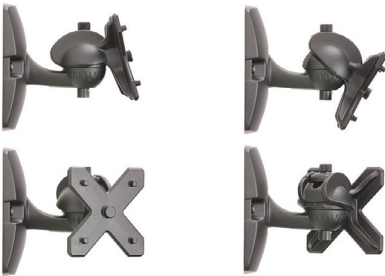
#### Application Diverse:

- IP-54 for dust and splash resistance
- Lightweight rugged ABS construction with UV Inhibitors
- Powder coated aluminum grills, X-Mount™ and treated hardware
- Weather-treated cones

#### Install Ready

- Patented X-Mount provides rapid deployment with repeatable angles
- Low saturation 70/100 V transformers (excluding AD-S12/AD-S112SW)
- 8  $\Omega$  low impedance bypass
- Euro block connector with loop-through
- Sealable input weather cup - keeps moisture away from wiring
- Optional yoke mount and M10 Kit-C for larger models (AD-S8T/AD-S10T/AD-S12)

Input terminal  
cover



Patented X-Mount™ mounting system

### Factory Optimized:

- **DMT (Directivity Matched Transition™):** Ensures smooth, uniform frequency response over the rated coverage area.
- **Intrinsic Correction™:** When paired with QSC network or DSP amplifiers, custom QSC loudspeaker voicings help to further reduce installation and setup time by taking the tuning process out of the installers' hands.

## AcousticDesign™ Series Loudspeakers

### Surface-mount



**AD-S4T-BK  
AD-S4T-WH**



**AD-S6T-BK  
AD-S6T-WH**

Effective Frequency Range <sup>1</sup>	70 kHz – 20 kHz	60 kHz – 20 kHz
Power Capacity <sup>2</sup>	50 W	150 W
System Sensitivity <sup>3</sup>	87 dB SPL	89 dB SPL
Coverage Angle (-6 dB)	120° conical DMT	105° conical DMT
Output <sup>4</sup> (Peak SPL @ 1M)	110 dB	116 dB
Driver Information		
LF	4.5 in weather treated paper cone woofer	6.5 in weather treated paper cone woofer
HF	0.75 in silk dome tweeter / 0.75 in voice-coil	1 in silk dome tweeter / 1 in voice-coil
Rated Impedance	8 Ω	8 Ω
Input Connectors	Euroblock connector with parallel output terminals	
Enclosure	Painted ABS polymer	Painted ABS polymer
Ingress Protection	IP-54	IP-54
Net Weight	6.5 lb / 2.95 kg	13.6 lb / 6.2 kg
Product Dimensions (HWD)	10.3 × 6.34 × 6.42 in (261 × 161 × 163 mm)	14.4 × 8.5 × 8.5 in (365 × 215 × 215 mm)

<sup>1</sup> Free-field, -10 dB from on-axis sensitivity.

<sup>2</sup> IEC60268-1 noise signal for 2 Hrs.

<sup>3</sup> On-Axis, free-field sensitivity, 2.83 V, 1 m.

<sup>4</sup> Calculated from rated noise voltage and sensitivity.

As part of QSC's ongoing commitment to product development, specifications are subject to change without notice.







**AD-S8T-BK  
AD-S8T-WH**



**AD-S10T-BK  
AD-S10T-WH**

Effective Frequency Range <sup>1</sup>	55 kHz – 20 kHz	50 Hz – 19 kHz
Power Capacity <sup>2</sup>	200 W	250 W
System Sensitivity <sup>3</sup>	90 dB SPL	92 dB SPL
Coverage Angle (-6 dB)	105° conical DMT	90° conical DMT
Output <sup>4</sup> (Peak SPL @ 1M)	121 dB	122 dB
Driver Information		
LF	8 in weather treated paper cone woofer	10 in weather treated paper cone woofer, 2.5 in / 64 mm voice-coil
HF	1 in exit / 1.4 in voice-coil compression driver	1 in exit / 1.4 in voice-coil compression driver
Rated Impedance	8 Ω	8 Ω
Input Connectors	Euroblock connector with parallel output terminals	
Enclosure	Painted ABS polymer	Painted ABS polymer
Ingress Protection	IP-54	IP-54
Net Weight	24.1 lb / 11 kg	31 lb / 15 kg
Product Dimensions (HWD)	17.3 × 10 × 9.9 in (440 × 254 × 251 mm)	20.3 × 12.5 × 11.7 in (516 × 318 × 298 mm)

<sup>1</sup> Free-field, -10 dB from on-axis sensitivity.

<sup>2</sup> IEC60268-1 noise signal for 2 Hrs.

<sup>3</sup> On-Axis, free-field sensitivity, 2.83 V, 1 m.

<sup>4</sup> Calculated from rated noise voltage and sensitivity.

As part of QSC's ongoing commitment to product development, specifications are subject to change without notice.



AcousticDesign™ Series Loudspeakers

Surface-mount



AD-S12-BK  
AD-S12-WH



AD-S112sw-BK  
AD-S112sw-WH

Effective Frequency Range <sup>1</sup>	52 Hz – 20 kHz	30 Hz - 135 Hz
Power Capacity <sup>2</sup>	300 W	300 W
System Sensitivity <sup>3</sup>	95 dB SPL	90 dB SPL
Coverage Angle (-6 dB)	75° conical DMT	N/A
Output <sup>4</sup> (Peak SPL @ 1M)	126 dB	121 dB
Driver Information LF	12 in weather treated paper cone woofer, 2.5 in / 64mm	12 in weather treated paper cone woofer, 2.5 in / 64mm voice coil
HF	voice-coil 1 in exit / 1.4 in voice-coil compression driver	
Rated Impedance	8 Ω	8 Ω
Input Connectors	Euroblock connector with parallel output terminals	
Enclosure	Painted ABS polymer	Painted ABS polymer
Ingress Protection	IP-54	IP-54
Net Weight	35 lb / 16 kg	29 lb / 13.2 kg
Product Dimensions	23.4 x 13.9 x 12.7 in (594 x 354 x 323 mm)	23.4 x 13.9 x 12.7 in (594 x 354 x 323 mm)

1 Free-field, -10 dB from on-axis sensitivity.  
2 IEC60268-1 noise signal for 2 Hrs.  
3 On-Axis, free-field sensitivity, 2.83 V, 1 m.  
4 Calculated from rated noise voltage and sensitivity.

As part of QSC's ongoing commitment to product development, specifications are subject to change without notice.





AD-S10T with patented  
X-Mount™ mounting system

Included Sealed  
Input Cover



## AcousticDesign™ Series Loudspeakers

Indoor/Outdoor Surface-mount

### AD-S32T

Ideal for background and general purpose audio playback, the AD-S32T loudspeaker offers a full sound in a surprisingly small package. For outdoor applications, the plated screw input signal terminals can be sealed with the included weather cover.



- Includes ball mount assembly and yoke mount
- Enclosure is molded from high impact polystyrene (HiPS)
- Powder coated aluminum grill
- Available in black or white
- Sealable input weather cup – keeps moisture away from wiring

### AD-S282H/AD-S282HT

For installations requiring additional low-frequency performance combined with higher acoustical output, the dual 8-inch AD-S282H / AD-S282HT is an ideal solution. The AD-S282H / AD-S282HT features contemporary styling and is perfect for a variety of environments and applications.

- Low impedance (AD-S282H) and 70/100 V with 8 ohm bypass (AD-S282HT) versions
- Enclosure is molded from high impact polystyrene (HiPS)
- Powder coated aluminum grill
- Available in black or white
- Yoke bracket included




**AD-S32T-BK**  
**AD-S32T-WH**
**AD-S282H-BK**  
**AD-S282H-WH**
**AD-S282H-BK**  
**AD-S282H-WH**

Effective Frequency Range (-10 dB) <sup>1</sup>	65 Hz – 20 Hz	60 Hz – 20 kHz	60 Hz – 20 kHz
Power Capacity <sup>2</sup>	30 W (100 hrs)	450 W (8 hrs)	450 W (8 hrs)
System Sensitivity <sup>3</sup>	85 dB	93 dB	93 dB
Coverage Angle	100° conical	90°H x 60°V rotatable	90°H x 60°V rotatable
Rated Impedance	8 Ω	8 Ω	8 Ω
Output <sup>4</sup> (Peak SPL @ 1M)	105 dB	126 dB	126 dB
Driver Information LF	3 in weather treated, poly-propylene cone woofer	Dual 8 in high-power treated cone, 2 in voice coil, neodymium magnet	Dual 8 in high-power treated cone, 2 in voice coil, neodymium magnet
HF	0.75 in neodymium tweeter	1 in high output compression driver	1 in high output compression driver
Rated Impedance	8 Ω	8 Ω	8 Ω
Input Connectors	Screw terminals	Barrier strip (switchable: passive/ bi-amp)	Barrier strip
Enclosure	Injection molded, weather treated high impact polystyrene		
Net Weight	4 lb / 1.8 kg	27.7 lb / 12.6 kg	27.7 lb / 12.6 kg
Product Dimensions (HWD)	7.9 x 4.8 x 5.5 in (202 x 123 x 140 mm)	26.2 x 10.2 x 11.4 in (665 x 259 x 290 mm)	26.2 x 10.2 x 11.4 in (665 x 259 x 290 mm)

<sup>1</sup> Free-field, -10 dB from on-axis sensitivity.

<sup>2</sup> IEC60268-1 noise signal for 2 Hrs.

<sup>3</sup> On-Axis, free-field sensitivity, 2.83V, 1 m.

<sup>4</sup> Calculated from rated noise voltage and sensitivity.

As part of QSC's ongoing commitment to product development, specifications are subject to change without notice.



**AcousticDesign™ Series AD-S28Tw Subwoofer**

Surface-mount



Designed and acoustically matched for use with AcousticDesign™ Series installation loudspeakers, the AD-S28Tw is a dual 8-inch surface mount subwoofer that complements any of the ceiling-mount or surface-mount AD Series full-range models. Efficient band-pass design features one sealed chamber and a second, ported chamber that combine to produce extended low frequency reproduction.

- Dual 8 in weather treated polypropylene woofers provide exceptional resistance in high humidity environments
- Bass extension down to 36 Hz
- Built-in, passive 120 Hz low-pass filter
- 70/100 volt multi-tap transformer with 8  $\Omega$  bypass
- Marine grade plywood enclosure
- Nickel plated screw terminals accept up to 12 AWG (2.053 mm<sup>2</sup>) wiring
- Rubber feet allow floor or shelf deployment
- Forged-shoulder eyebolts and steel yoke enable suspended installation (included)

**AD-S28Tw**

Effective Frequency Range (-10 dB) <sup>1</sup>	36 Hz – 205 Hz
Power Capacity <sup>2</sup>	250 W (2 hours IEC)
System Sensitivity	94 dB, 2.83 V, 1 m, half space (2 $\pi$ )
Output <sup>3</sup> 2 $\pi$ (half space) 4 $\pi$ (full space)	124 dB SPL / 118 dB SPL 118 dB SPL / 112 dB SPL
Driver Information	Dual 8 in (200 mm) weather treated, polypropylene cone woofers, rubber surround
Nominal Impedance	8 $\Omega$
Input Connectors	4 position barrier strip; 2 in/2 out
Enclosure	Marine-grade plywood
Environmental	Exceeds mil spec 810 for humidity, salt spray and dust; IEC 60529 IP-X4 splash rating
Net Weight	43 lb / 19.5 kg
Product Dimensions (HWD)	15.9 x 9.9 x 22.8 in (404 x 251 x 603 mm)

1. All frequency ranges specified refer to measured free field response.

2. Maximum input power tested in accordance with IEC 268-5 recommendations, 50 Hz – 20 kHz band limiting, 6 dB signal crest factor.

3. Calculated SPL at 1m, speaker operating at rated RMS power with pink noise within specified frequency range.

As part of QSC's ongoing commitment to product development, specifications are subject to change without notice.



## AcousticPerformance™ Series Loudspeakers

### Installation Point-and-Shoot



AcousticPerformance™ Series is a line of professional loudspeakers ideally suited for a wide variety of foreground sound reinforcement applications requiring high sound pressure levels from an unobtrusive, stylish enclosure. AcousticPerformance™ Series loudspeakers utilize DMT (Directivity Matched Transition™), a design approach that matches HF waveguide to the natural coverage angle of the woofer at the crossover region. This innovation vastly improves the loudspeakers power response resulting in smooth and consistent coverage, both on and off axis.

- **DMT (Directivity Matched Transition™):** Ensures smooth, coherent power response across the listening plane
- **M10 and yoke mount fittings:** Offer flexible deployment options for a variety of applications
- **Clean industrial design:** Unadorned grilles compliment most decors and settings
- 16-gauge powder coated steel grilles
- Complete EASE, CAD, and BIM information available online



**AP-5102****AP-5122**

Effective Frequency Range (-10 dB) <sup>1</sup>	60 Hz – 18 kHz	48 Hz – 18 kHz
Power Capacity <sup>2</sup>	450 W / 54 V continuous	550W / 60 V continuous
System Sensitivity <sup>3</sup>	94 dB, 1 W @ 1 m	95dB, 1 W @ 1 m
Coverage Angle	105° conical DMT	90° conical DMT
Output <sup>4</sup> (Peak SPL @ 1M)	127 dB	128 dB
Driver Information		
LF	10 in driver with 3 in VC; 450W / 54V (2 Hrs)	12 in driver with 4 in VC; 450W / 60V (2 Hrs)
HF	3 in voice coil, compression driver; 72 W / 24 V (2 Hrs)	3 in voice coil, compression driver; 72 W / 24 V (2 Hrs)
Rated Impedance	8 Ω	8 Ω
Input Connectors	Barrier Strip, NL4 connector	Barrier Strip, NL4 connector
Enclosure	15-ply Baltic birch plywood	15-ply Baltic birch plywood
Net Weight	48 lb / 21.7 kg	65 lb / 29.5 kg
Product Dimensions (HWD)	22 × 12 × 10.5 in (559 x 305 x 267 mm)	26 × 15 × 13 in (660 x 381 x 330 mm)

<sup>1</sup> Free-field, -10 dB from on-axis sensitivity.

<sup>2</sup> IEC60268-1 noise signal for 2 Hrs.

<sup>3</sup> On-Axis, free-field sensitivity, 2.83V, 1 m.

<sup>4</sup> Calculated from rated noise voltage and sensitivity.

As part of QSC's ongoing commitment to product development, specifications are subject to change without notice.



AcousticPerformance™ Series Loudspeakers

Installation Point-and-Shoot



AP-5152



AP-4122m

Effective Frequency Range (-10 dB) <sup>1</sup>	44 Hz – 18 kHz	50 Hz – 18 kHz
Power Capacity <sup>2</sup>	625 W / 65 V continuous	400 W / 40 V continuous
System Sensitivity <sup>3</sup>	96 dB, 1 W @1 m	96 dB, 1 W @1 m
Coverage Angle	75° conical DMT	90° conical DMT
Output <sup>4</sup> (Peak SPL @ 1M)	129 dB	128 dB
Driver Information		
LF	15 in driver with with 102 mm (4 in) VC / 65V (2 Hrs)	12 in driver with 2.5 in VC
HF	3 in voice coil, compression driver; 72W / 24V (2 Hrs)	1 in compression driver with 1.75 in VC
Rated Impedance	8 Ω	4 Ω
Input Connectors	Barrier strip, NL4 connector	Barrier strip, NL4 connector
Enclosure	15-ply baltic birch plywood	15-ply baltic birch plywood
Net Weight	80 lb / 36.2 kg	39.7 lb / 18.1 kg
Product Dimensions (HWD)	32 × 17.5 × 15.2 in (813 × 445 × 386 mm)	22.5 × 15.1 × 14.5 in (510 × 385 × 370 mm)

1 Free-field, -10 dB from on-axis sensitivity.

2 IEC60268-1 noise signal for 2 Hrs.

3 On-Axis, free-field sensitivity, 2.83V, 1 m.

4 Calculated from rated noise voltage and sensitivity.

As part of QSC's ongoing commitment to product development, specifications are subject to change without notice.



**AP-212sw**

Effective Frequency Range (-10 dB) <sup>1</sup>	35 Hz – 250 kHz
Power Capacity <sup>2</sup>	600 W / 49 V continuous
System Sensitivity <sup>3</sup>	93 dB, 1 W @1 m
Coverage Angle	NA
Output <sup>4</sup> (Peak SPL @ 1M)	127 dB
Driver Information LF	2 x 12 in driver with weather treated cone woofer
Rated Impedance	4 Ω
Input Connectors	Barrier strip, NL4 connector
Enclosure	15-ply baltic birch plywood
Net Weight	65.4 lb / 29.7 kg
Product Dimensions (HWD)	26 × 15 × 24 in (660 × 381 × 610 mm)

1 Free-field, -10 dB from on-axis sensitivity.

2 IEC60268-1 noise signal for 2 Hrs.

3 On-Axis, free-field sensitivity, 2.83V, 1 m.

4 Calculated from rated noise voltage and sensitivity.

As part of QSC's ongoing commitment to product development, specifications are subject to change without notice.



## AcousticDesign™ Series Loudspeakers

### Small Format Sub/Sat



The AcousticDesign™ Series Sub/Sat loudspeaker line offers premium solutions for unprecedented acoustic performance within a small form factor often desired for architectural acceptance. Backed by the QSC loudspeaker legacy of quality and support, this line supports retail, restaurant, hospitality and other commercial spaces. Even at low volume levels, the AcousticDesign Series Sub/Sat loudspeakers provide exceptional warmth and crystal-clear highs for remarkable acoustic ambiance.

#### **Architecturally pleasing:**

*Support the aesthetic of demanding installations*

- Small form factor with unobtrusive, stylish industrial design
- Available in white (RAL 9010) or black (RAL 9011)
- Paintable, unadorned grills and enclosures

#### **Solution for every space:**

*One comprehensive catalog simplifies quoting/design process*

- Mix-&-match subwoofers and satellites - perfectly balanced sonic characteristics allow interchangeability between enclosure types
- Indoor/outdoor usage - Sealed input panel covers, UV inhibitors, powder-coated aluminum grills, rugged ABS enclosures (for AD surface-mount loudspeakers)
- Complete EASE, DXF, CLF, BIM, REVIT, A&E information available online

#### **Easy to install:**

*Minimize installation and commissioning labor costs*

- Built-in high pass satellite outputs to speed installation and ease wiring
- Screw-down Euro block connectors
- Snap-Fit magnetic grills (for ceiling-mount and pendant models)
- Easy, repeatable mounting system for surface-mount models
- 4  $\Omega$  low impedance bypass

**AD-C.SAT****AD-C.SUB**

Enclosure Type	Ceiling-mount	Ceiling-mount
Effective Frequency Range (-10 dB)	150 Hz – 20 kHz	45 Hz – 150 kHz
Power Capacity <sup>1</sup>	25 W	100 W
System Sensitivity <sup>2</sup>	82 dB	150 dB
Coverage Angle	110°	150°
Output <sup>3</sup> (Peak SPL @ 1M)	96 dB	106 dB
Driver Information		
LF	N/A	6.5 in DVC subwoofer, paper cone, rubber surround
HF	2.75 in full range, paper cone, rubber surround, inverted aluminum dust cap	N/A
Rated Impedance	16 Ω	4 Ω
70 / 100 V	N/A	100 W max tap
UL1480 and UL2043 certified	Yes	Yes
Input Connectors	2-pin Euro terminals	4-pin Euro terminals
Cut-out Dimension	4.4 in (Ø 112 mm)	11.9 in (Ø 302 mm)
Product Dimension	Ø 5.9 x 3.4 in (Ø 150 x 86 mm)	Ø 13.4 x 10 in (Ø 340 x 254mm)
Net Weight	1.4 lb / 0.64 kg	19.2 lb / 8.70 kg

<sup>1</sup> Free-field, -10 dB from on-axis sensitivity.

<sup>2</sup> On-Axis, free-field sensitivity, 2.83V, 1 m

<sup>3</sup> Calculated from rated noise voltage and sensitivity.

As part of QSC's ongoing commitment to product development, specifications are subject to change without notice.





**AD-P.SAT**

**AD-P.SUB**

Enclosure Type	Pendant-mount	Pendant-mount
Effective frequency range	150 Hz – 20 kHz	55 Hz – 150 Hz
Power Capacity <sup>1</sup>	25 W	100 W
System Sensitivity <sup>2</sup>	82 dB	86 dB
Coverage Angle	110°	150°
Output <sup>3</sup> (Peak SPL @ 1M)	96 dB	106 dB
Driver Information		
LF	N/A	6.5 in DVC subwoofer, paper cone, rubber surround
HF	2.75 in full range, paper cone, rubber surround, inverted aluminum dust cap	N/A
Rated Impedance	16 Ω	4 Ω
70 / 100 V	N/A	100 W max tap
Input Connectors	2-pin Euro terminals	4-pin Euro terminals
Product Dimensions	Ø 4.3 x 4.5 in (Ø 110 x 115 mm)	Ø 13.5 x 13.8 in (Ø 345 x 350 mm)
Net Weight	0.9 lb / 400 g	16.5 lb / 7.5 kg

1 Free-field, -10 dB from on-axis sensitivity.  
2 On-Axis, free-field sensitivity, 2.83V, 1 m  
3 Calculated from rated noise voltage and sensitivity.

**AD-S.SAT****AD-S.SUB**

Enclosure Type	Surface-mount	Surface-mount
Effective Frequency Range <sup>1</sup>	150 Hz – 20 kHz	45 Hz – 150 Hz
Power Capacity <sup>2</sup>	25 W	100 W
System Sensitivity <sup>3</sup>	82 dB	86 dB
Coverage Angle (-6 dB)	110°	160°
Output <sup>4</sup> (Peak SPL @ 1M)	96 dB (each satellite)	106 dB
Driver Information		
LF	N/A	6.5 in DVC subwoofer, paper cone, rubber surround
HF	2.75 in full range, paper cone, rubber surround, inverted aluminum dust cap	N/A
Rated Impedance	16 Ω	8+8 Ω (stereo) or 4 Ω (mono)
70 / 100 V	N/A	100 W max tap
Input Connectors	2-pin Euro terminals	4-pin Euro terminals
Net Weight	1.0 lb (433 g)	23.6 lb (10.7 kg)
Product Dimensions (HWD)	3.5 x 5.4 x 3.6 in (89 x 136 x 92.5 mm) <sup>4</sup>	3.5 x 5.4 x 3.6 in (89 x 136 x 92.5 mm) <sup>5</sup>

<sup>1</sup> Free-field, -10 dB from on-axis sensitivity.

<sup>2</sup> On-Axis, free-field sensitivity, 2.83V, 1 m

<sup>3</sup> Calculated from rated noise voltage and sensitivity.

<sup>4</sup> Includes wall bracket (WxDxH)

<sup>5</sup> Wall bracket adds 22.5mm to width (WxDxH)

As part of QSC's ongoing commitment to product development, specifications are subject to change without notice.



## ILA Series

### Installation Line Array



WL2082-i with WL118-sw using  
EB2082-i extension bar and  
FB2082-i fly-bar.

Designed for installation applications while retaining the performance of high-end touring line array systems, the ILA Series takes this concept and builds on it by offering a complete and accessible solution consisting of processing, amplification, line array, subwoofer and suspension accessories. Built around the WL2082-i line array element, the system offers both flying (WL118-sw) or ground-stacked (GP118-sw) subwoofer options.



**WL2082-i**

- Dual 8-inch diameter low-frequency drivers.
- Dual 1.75-inch voice coil diameter, neodymium compression drivers with titanium domes.
- Patented\* multiple aperture diffraction waveguide that provides extremely wide coverage (140°).
- Available in black or white and constructed from high impact polystyrene.
- May be used in outdoor applications where the system is not directly exposed to the elements.

**WL2082-i**

Effective Frequency Range (-10 dB)	68 Hz – 22 kHz
Nominal Coverage	140° H
System Sensitivity <sup>1</sup>	132 dB
Power Handling <sup>2</sup> HF LF / MF / Bi-amp Tri-amp	100 W 400 W 200 W + 200 W
Driver Information LF HF	2 x 8 in transducers; 2 in voice coil; neodymium magnet 2 x 1.75 in titanium diaphragm, neodymium magnet
Input Connectors	2 x NL8 in parallel
Enclosure	HiPS
Net Weight (each)	37 lb / 16.8 kg
Product Dimensions (HWD)	11.8 x 27 x 13.4 in (300 x 686 x 340 mm)

<sup>1</sup> Calculated at 1 m using power capacity and system sensitivity. 6 dB peak-to-average signal ratio assumed.

<sup>2</sup> Continuous IEC specified test signal, 2 hours.

\*Patent No. 7,177,437

As part of QSC's ongoing commitment to product development, specifications are subject to change without notice.



## ILA Series

### Installation Line Array



GP118-sw

#### **GP118-sw Subwoofer**

- 18-inch diameter low-frequency driver
- 850 W continuous power handling
- Performance down to 29 Hz
- Integrated M10 suspension points
- M20 threaded pole mount
- Available in black or white and housed in a birch plywood enclosure

#### **WL118-sw Subwoofer**

- 18-inch diameter low-frequency driver
- 850 W continuous power handling
- Performance down to 29 Hz
- Flyable on top or behind an ILA array
- Available in black or white and housed in a birch plywood enclosure

**GP118-sw****WL118-sw**

Effective Frequency Range (-10 dB)	29 Hz – 800 Hz	29 Hz – 800 Hz
Nominal Coverage	N/A	N/A
System Sensitivity <sup>1</sup>	134.5 dB	134.5 dB
Power Capacity <sup>2</sup>	850 W	850 W
Driver Information LF	18 in transducer, 4 in voice coil, ferrite magnet	
Input Connectors	2 x NL8 in parallel and 2 x NL4 in parallel	
Enclosure	Premium birch plywood	
Net Weight (each)	107 lb / 48.5 kg	111 lb / 50.4 kg
Product Dimensions (HWD)	20.9 x 25.8 x 30.4 in (531 x 656 x 772 mm)	22.1 X 27.6 X 30.3 in (562 X 702 X 771 mm)

<sup>1</sup> Calculated at 1 m using power capacity and system sensitivity.  
6 dB peak-to-average signal ratio assumed.

<sup>2</sup> Continuous IEC specified test signal, 2 hours.

As part of QSC's ongoing commitment to product development, specifications are subject to change without notice.



MIXERS



UTS [MONO SUMMING]



OUTPUTS [LINE LEVEL]



CH 1	CH 2
h - +	h - +
CH 3	CH 4



CH 5	CH 6
h - +	h - +
CH 7	CH 8

12

**QSC**

**MP-M40**  
8 INPUT / 4 OUTPUT  
MUSIC AND PAGING  
ZONE MIXER

**QSC**

**MP-M80**  
16 INPUT / 8 OUTPUT  
MUSIC AND PAGING  
ZONE MIXER

ZONE MIXER  
16 INPUT / 8 OUTPUT  
MUSIC AND PAGING  
**MP-M80**  
**QSC**

## MP-M Series

Zone Mixers and control peripherals



The QSC MP-M music and paging mixers are mixer/processors offering unprecedented capabilities combined with ease of configuration and operation, contained in a reduced footprint (standard 1RU rackspace). Intended for retail and hospitality applications in which high-quality audio from various sources is routed to multiple zones, as well reinforcement applications for entertainment, presentations or conferences.

### Hardware

- **Inputs/outputs:** The MP-M80 has eight mic/line inputs, eight line inputs and eight zone outputs while the MP-M40 has four mic/line inputs, four line inputs and four zone outputs. Each line input features dual phono-jacks (summed to mono) for easy connection to the sources typically found in business music installations

### Processing/Mixing

- **Input processing:** Comprehensive processing includes high and low-pass filters, 4-band parametric EQ, a gate and a dynamics processor that may be configured as an automatic gain control (AGC) or a compressor
- **Output (zone) processing:** Mix any combination of input channels as sources for any output zone. Two input channels can be designated as priority sources that will 'duck' the selected input channel for paging/ announcements or to allow a higher-priority source to take over. There are processing blocks for auto-loudness, equalization (1/3 octave GEQ), limiting and anti-feedback notch filters
- **Conference/live performance options:** An integral stereo mixer may be used for reinforcement of live performance or for conference/presentation mixing. Effects processing and a gain-sharing automatic microphone mixer are both available
- **Loudspeaker processing:** Intrinsic Correction™ voicings are available for QSC loudspeakers. Users can also create custom loudspeaker voicings

**MP-M40****MP-M80****Inputs**

Total	8	16
Mic/Line	4 (Euroblock)	8 (Euroblock)
RCA	4 (mono-summed RCA pairs)	8 (mono-summed RCA pairs)
USB	2 USB-A (Firmware & configuration uploads, USB audio playback, USB Wi-Fi)	

**Outputs**

Total	6	10
Line	4 (Euroblock, balanced)	8 (Euroblock, balanced)
Cue (phones)	1 (3.5 mm, stereo)	1 (3.5 mm, stereo)
Music on hold	1 (Euroblock)	1 (Euroblock)

**Input Processing**

EQ	4-band parametric EQ, variable 24 dB/octave HPF and LPF	
Dynamics	Gate, choice of Auto Gain Control (AGC) or Compressor	
Delay	100 msec	100 msec

**Output Processing**

EQ	1/3 octave GEQ	
Anti-Feedback	12-band variable notch filters	
Dynamics & Effects	Limiter, ducker, loudness, multi-effects processor	
Delay	100 msec	100 msec
Loudspeaker tuning	Factory: Intrinsic Correction(TM) voicing for QSC loudspeakers User: 6-band Parametric EQ, HPF, LPF	
RTA	1 1/3 octave RTA	

**Control**

Ethernet	1 x RJ45 for connection to Wi-Fi router (user supplied)	
MP-MFC ports	2 x RJ-45, supports up to 4 controllers, cable lengths up to 250 m	
Wireless Control	MP Install and MP Manage apps for iOS and Android via Wi-Fi	
GPI	2 Inputs (Euroblock, black)	

Net Weight	7.0 lb (3.2 kg)	7.0 lb (3.2 kg)
------------	-----------------	-----------------

Product Dimensions (HWD)	1.75 x 19 x 14 in (4.5 x 48.3 x 35.6 cm)	
--------------------------	--	--



## Software

MP Install (for iOS/Android tablets, Windows and Mac OS)

- **Configure and tune:** Used by the system designer and installer to configure and tune the system.
- **Configure anywhere:** Offline and online use is supported allowing the designer to pre-configure a system without connecting to MP-M hardware. Wireless control lets the installer walk the room while tuning.
- **Workflow wizards:** Includes a Setup Wizard and tools to assist the installer with system tuning and commissioning.
- **End user control options:** Provides as much or as little control as the installation requires for the available MP-MFC wall-mounted controllers or MP Manage wireless end user app.

MP Manage (for iOS/Android tablets and smartphones)

- **Wireless facility control:** Facility staff use MP manage for day-to-day operation of basic system functions.
- **Features-rich:** Zone level control and source selection, scene recall, scheduling, mixer control along with wireless store-and-forward paging from smartphones.
- **Assignable control access:** Create multiple user profiles to grant individuals access to only those functions they need.





## Controllers

### MP-MFC Controllers

- **Easy end user control:** Clearly labeled graphic display is configurable to control or restrict access to recalling scenes, as well as selecting source and adjust level for one of more zones.
- **Convenient colors and sizes:** MP-MFC controllers will fit in North American or European electrical boxes and come in black and white. The North American version is compatible with Decora® wall plates.
- **Controls where you need them:** Up to eight MP-MFC controllers may be connected to a single MP-M using standard CAT5 cabling. The MP-M has two ports, each of which can accommodate four daisy-chained controllers with a maximum total cable length of 250 m.

### MP-MFC

Controls	Three buttons (Increment/decrement, and select)
Connectors	2 x RJ45
Resolution	128 x 128 pixels, 27 x 26 mm viewing area
Maximum per MP-M	Up to 8 controllers per system (4 per leg) / up to 250 m cable length per leg
Available Colors	White or black
Dimensions (HWD)	North American Versions: 4.5 x 2.75 x 1.4 in (11.4 x 7.0 x 3.5 cm) European Versions: 3.5 x 3.5 x 1.4 in (8.9 x 8.9 x 3.6 cm)

## TouchMix™ Series

### Compact Digital Mixers



The TouchMix™ Series stands as the perfect complement to any installation that might have live performance needs, going Beyond Mixing™ to deliver amazing results to users at all levels of experience. For live sound professionals, TouchMix has everything you would want and expect in an advanced, world-class mixing console — in a package small enough fit in constrained spaces. For more casual users TouchMix Presets, Wizards and Simple Modes help you get a professional mix quickly and easily,

#### “Big Mixer” in Features and Specifications

TouchMix Series “no asterisk” specifications include 4-band, fully parametric EQ with variable hi- and lo-pass filters, as well as comprehensive dynamics processing on each input channel. Four mix busses feed four internal professional, digital effects processors (six busses and six processors on TM-30). Comprehensive dynamics, graphic EQ, hi-pass, lo-pass and notch filters and delay are available on both the main and aux outputs and there are 8 DCA groups with mutes as well as 8 mute groups. The TouchMix-30 Pro additionally offers 8 Sub groups with their own extensive processing as well as a Patch Matrix for inmuting in of inputs and a powerful copy-and-paste function. With 4/10/14 Aux output channels (TM-8/16/30), TouchMix also has ample stage monitor mixing capability and all models have the ability to drive wired stereo in-ear monitors directly.



TouchMix™-30 Pro



TouchMix™-8



TouchMix™-16

## Fast, Professional Results

TouchMix features a comprehensive library of Channel Presets designed specifically for the unique requirements of live reinforcement for music and speech. Created utilizing all types of instruments, popular microphones and pickups as well as multiple types of speaker systems, these presets help the user achieve great results quickly. Effects and Gain Wizards further assist the user in achieving great results quickly. All models feature powerful and intuitive Anti-Feedback and Room Tuning Wizards as well as two real-time analyzers (RTA).



## Recording - With or Without a Computer

Direct to USB drive recording makes it easy to capture every performance to multi-track. The TouchMix-30 Pro can also operate as a 32x32 channel DAW interface for recording in both macOS® and Windows® environments.

TouchMix™ Series Compact Digital Mixers

TouchMix-30 Pro

Display	10 in (254 mm) diagonal, 1024 x 600 pixel, color TFT, capacitive multi-touch sensing
Inputs	
Totoal Inputs	32 (24 mic/line, 6 line, 2 stereo USB)
Mic/Line	24 (20 XLR, 4 XLR combo)
Line	6 (balanced, 1/4 in TRS and top panel 1/8 in (3.5 mm) stereo)
Stereo USB	Stereo USB / MP3 playback
EQ	4-band Parametric EQ with Hi/Low Shelving option, variable 24 db / octave HPF and LPF
Dynamics	Gate, Compressor
Delay	Delay (100 msec max)
Outputs	
Total Outputs	16
Main L/R	2 (XLR line-level)
Aux	14 (XLR, line-level)
EQ	1/3 octave GEQ, 6-band Parametric EQ, Variable HPF and LPF
Anti-Feedback Filters	12-band Anti-Feedback Filters
Dynamics	Compressor / Limiter
Delay	100 msec
Multi-Track	32 x 32 tracks direct to hard drive
DAW	32 x 32 tracks (Core Audio interface to Mac OS)
Effects	6 simultaneous, professional effects engines including Reverb, Echo, Delay, Chorus, Pitch Shift
Real Time Analyzer	2 (1/3 octave, assignable to channels or user selectable source)
External Control	TouchMix-30 Control App for iOS® and Android controls all mixer functions via Wi-Fi
Included Accessories	Power cable

1 The TouchMix Control App requires iOS 8 or higher.



## Specifications

**TouchMix-16**

7 in (178 mm) diagonal color TFT, capacitive touch sensing

22  
16 (12 XLR, 4 XLR combo)  
2 Stereo (1/4 in TRS)  
Stereo USB / MP3 playback  
4-band Parametric EQ with Hi/Low Shelving option, variable 24 db / octave HPF and LPF  
Gate, Compressor  
Delay (100 msec max)

12  
2 (XLR line-level)  
6 (XLR, line-level) + 2 (TRS, stereo In Ear Monitor or mono balanced line-level)  
1/3 octave GEQ, 6-band Parametric EQ, Variable 8-band Anti-Feedback Filters  
8-band Anti-Feedback Filters  
Limiter  
100 msec  
22 x 22 tracks direct to hard drive  
N/A

4 simultaneous, professional effects engines including Reverb, Echo, Delay, Chorus, Pitch Shift

1 (1/3 octave. Assignable to channels or user selectable source)

TouchMix-8/16 Control App for iOS® and Android controls all mixer functions via Wi-Fi

USB Wi-Fi adapter, soft carrying case, power supply

**TouchMix-8**

7 in (178 mm) diagonal color TFT, capacitive touch sensing

14  
8 (4 XLR, 4 XLR combo)  
2 Stereo, 1/4 in TRS  
Stereo USB / MP3 playback  
4-band Parametric EQ with Hi/Low Shelving option, variable 24 db / octave HPF and LPF  
Gate, Compressor  
Delay (100 msec max)

6  
2 (XLR line-level)  
4 (XLR, line-level)  
1/3 octave GEQ, 6-band Parametric EQ, Variable 8-band Anti-Feedback Filters  
8-band Anti-Feedback Filters  
Limiter  
100 msec  
14 x 14 tracks direct to hard drive  
N/A

4 simultaneous, professional effects engines including Reverb, Echo, Delay, Chorus, Pitch Shift

1 (1/3 octave. Assignable to channels or user selectable source)

TouchMix-8/16 Control App for iOS® and Android controls all mixer functions via Wi-Fi

USB Wi-Fi adapter, soft carrying case, power supply

1 The TouchMix Control App requires iOS 8 or higher.



©2020 QSC, LLC, all rights reserved. QSC, the QSC logo, PowerLight, Q-SYS, are registered trademarks of QSC, LLC, in the US and other countries. FAST, X-Mount, DMT, AcousticDesign, and Intrinsic Correction are trademarks of QSC, LLC. Intel and the Intel logo are trademarks of Intel Corporation in the U.S. and/or other countries. CobraNet is a trademark of Cirrus Logic. Skype for Business™ is a trade mark of Skype is not affiliated, sponsored, authorised or otherwise associated by/with the Skype group of companies. GotoMeeting™ are either registered trademarks or trademarks of Citrix Systems, Inc. in the United States and/or other countries. Dante is a trademarks of Audinate Pty Ltd. PowerCON and Speakon are trademarks of Neutrik. All trademarks are the property of their respective owners. Multiple aperture diffraction slot waveguide US Patent number 7177437. Other patents may apply or be pending. Skype for Business™ is a trademark of Skype and is not affiliated, sponsored, authorized or otherwise associated by/with the Skype group of companies. ©2019 Google LLC, used with permission. Google is a registered trademark of Google LLC. All other trademarks are the property of their respective owners. 1/1/2020

