



Roku XD 2050X Remote Control Casing Replacement

Use this guide to disassemble your Roku 2050X Remote.

Written By: William



INTRODUCTION

Prerequisite Only




TOOLS:

- [Spudger](#) (1)
-

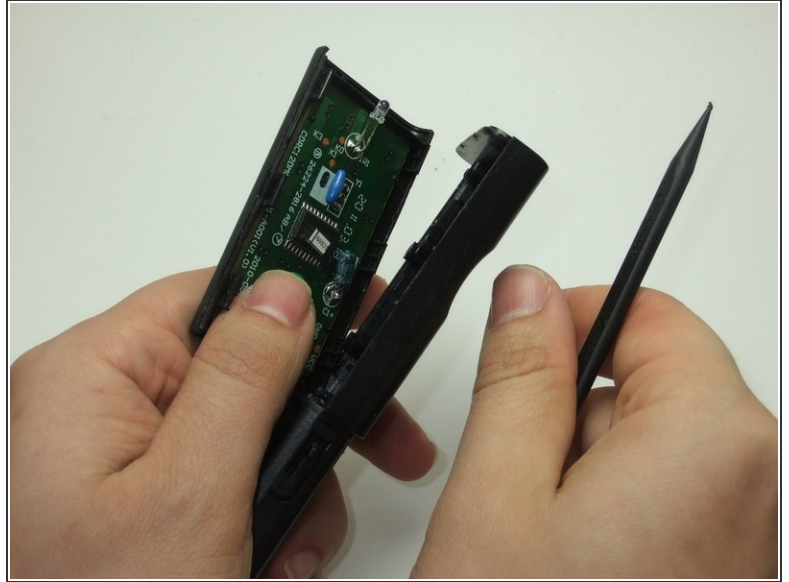
Step 1 — Remote Control Casing



 Take care when handling components. Circuit boards, soldering points, and other areas may have sharp points.

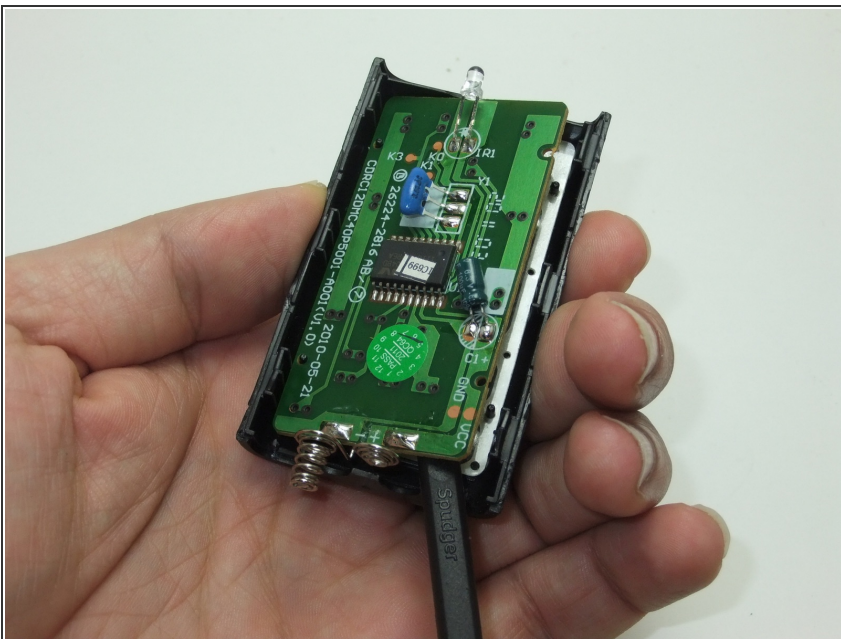
- Remove the battery cover.
- Remove the two AA batteries.

Step 2



- Insert flat edge of spudger into seam between the top and bottom halves of the remote control.
- Gently twist the spudger to separate the top and bottom halves of the remote.

Step 3



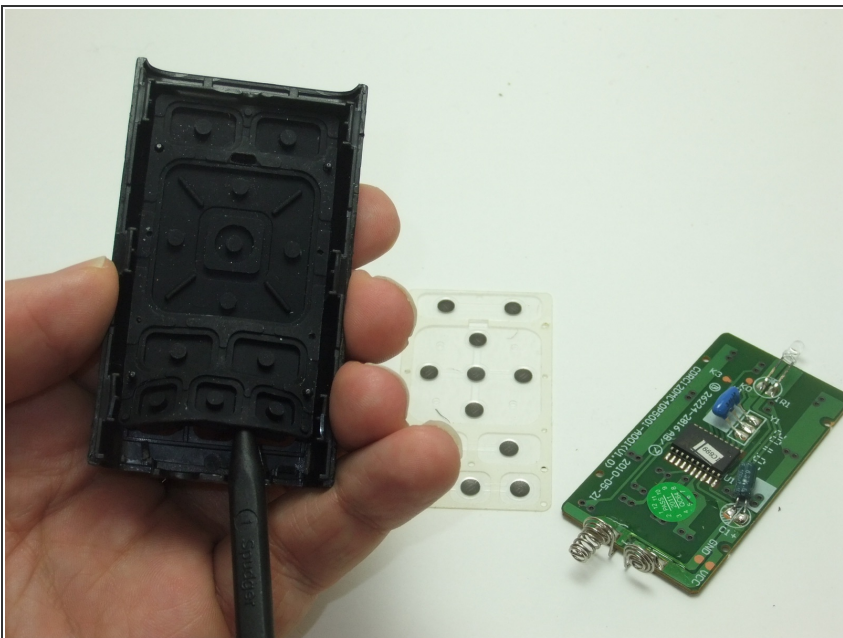
- Gently use the spudger to pry the circuit board loose.

Step 4



- Using either end of the spudger, gently lift and remove the clear keypad backing.

Step 5



- Using either end of the spudger, lift and remove the rubber keypad.

To reassemble your device, follow these instructions in reverse order.