



# HIGHEST R-VALUE

# R MAX<sup>®</sup>

WALL AND ROOF INSULATION

# MAX<sup>®</sup>

THERMASHEATH

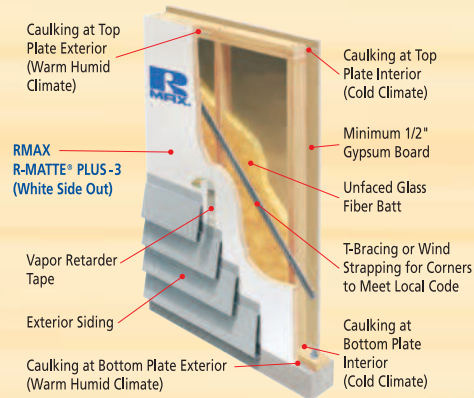
Atlanta, Inc. Dallas, Texas

# BEST SOLUTION

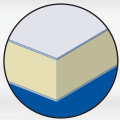
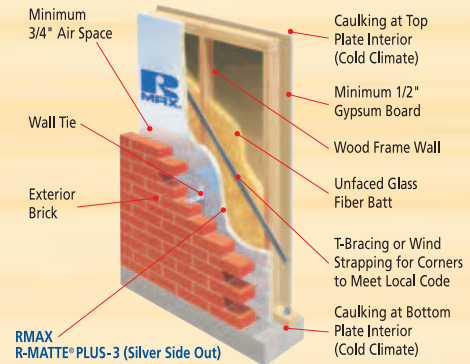


# RMAX® POLYISO WALL INSULATION

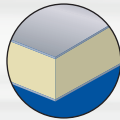
## R-MATTE® PLUS - 3 IN FRAME WALL CONSTRUCTION



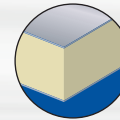
## R-MATTE® PLUS - 3 IN FRAME WALL CONSTRUCTION



**R-MATTE® PLUS - 3:** This versatile multi-application product is used with the reflective foil facer to the exterior in brick cavity wall applications and the white matte facer to the exterior when siding is applied over it. R-Matte Plus-3 can be applied to the interior or exterior face of masonry walls.



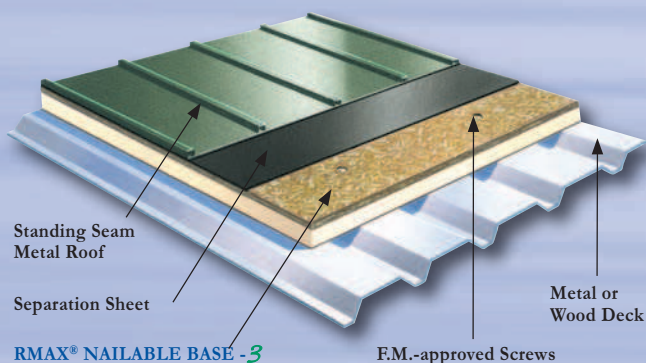
**THERMASHEATH® - 3:** Our standard foil-faced product for use in frame construction, cavity wall, vaulted ceiling construction, interior or exterior of masonry walls, limited roof applications and in retrofit applications.



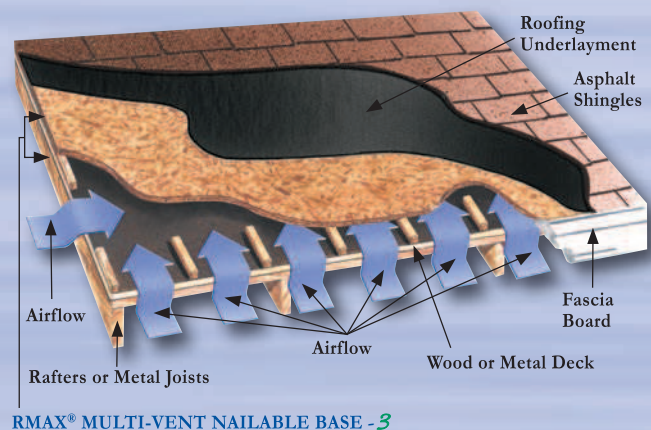
**TSX-8500 SERIES FOR EXPOSED APPLICATIONS:**  
An excellent choice for pre-engineered metal buildings, pole buildings, agriculture and cold storage applications.

# RMAX® POLYISO ROOF INSULATION

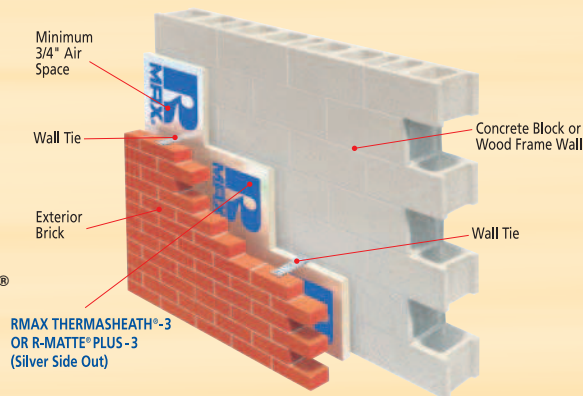
## STANDING SEAM METAL ROOF WITH RMAX® NAILABLE BASE - 3



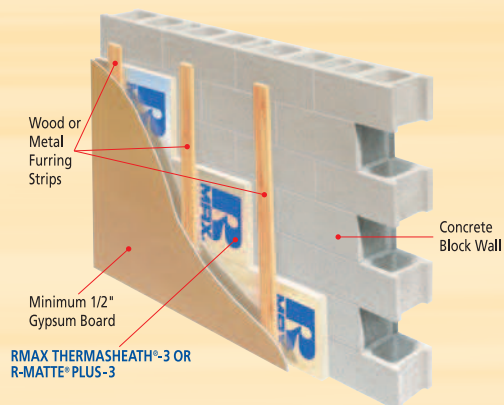
## ASPHALT SHINGLES WITH RMAX® MULTI-VENT NAILABLE BASE - 3



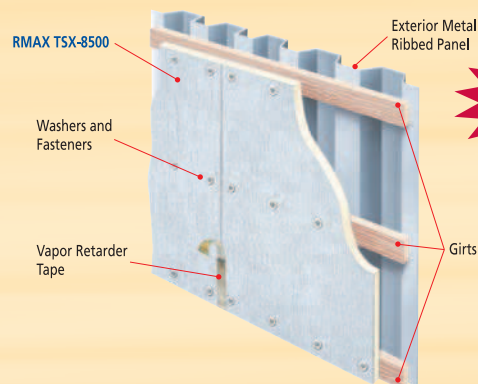
## THERMASHEATH® - 3 / R-MATTE® PLUS - 3 IN BRICK CAVITY WALL CONSTRUCTION



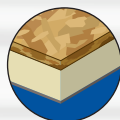
## THERMASHEATH® - 3 / R-MATTE® PLUS - 3 IN INTERIOR BLOCK WALL CONSTRUCTION



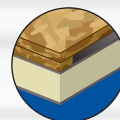
## TSX-8500 IN POST FRAME AND METAL BUILDING CONSTRUCTION



**For Exposed Applications!**



**NAILABLE BASE -3:** Suitable for standing seam metal, clay tile and slate roofing applications.



**MULTI-VENT NAILABLE BASE -3:** A superior choice anywhere shingle manufacturers' warranties require ventilation of the roof system. Rmax's wood blocks are configured to allow air flow in any direction and are spaced no more than 12" apart.

### Typical Physical Properties for Nailable Base Products

Physical properties shown are for the polyiso insulation layer only, are based on data obtained under controlled conditions and are subject to normal manufacturing tolerances.

Property	Test Method	Results
Density, Overall, Nominal	ASTM D1622	2.0 pcf
Compressive Strength	ASTM D1621	20 psi
Flame Spread, Core <sup>1</sup>	ASTM E84	25-60
Smoke Developed, Core <sup>1</sup>	ASTM E84	75-160
Water Vapor Transmission	ASTM E96	< 1.5 perm
Water Absorption	ASTM C209	< 1% Vol.
Dimensional Stability	ASTM D2126, 7days, 158° F, 98%rh	< 2% Linear Change
Service Temperatures		-40°F to +250°F

<sup>1</sup> Flame Spread and Smoke Developed Indexes are used to measure and describe the properties of this material in response to heat and flame under controlled laboratory conditions and should not be used to describe or appraise the fire hazard or fire risk of this material and other related roofing components under actual fire conditions.

### Nominal Thickness

### Thermal R-Value

	Rmatte Plus -3' / Thermasheath -3'	TSX-8500'	Nailable Base -3''
0.5"	3.2		
0.75"	5.0	5.0	
1.0"	6.0	6.0	
1.5"	9.6	9.6	6.7
2.0"	13.1	13.1	9.7
2.5"	16.7	16.7	12.8
3.0"	20.3	20.3	18.5
3.5"	23.9	23.9	19.2
4.0"	27.4	27.4	22.4
4.5"	31.0	31.0	25.7

"R" means resistance to heat flow. The higher the R-Value, the greater the insulating power.

\* Thermal values are determined by using ASTM C518 test method at 75 degree F mean temperature on material conditioned according to PIMA Technical Bulletin No. 101.

\*\* LTTR values are determined in accordance with CAN/ULC-S770. LTTR predicts a 15-year time-weighted average.



## General Conditions and Precautions

**Material Handling:** Rmax insulation is shipped in plastic wrapped bundles approximately 48 inches high. These wrapping materials are not adequate for weather protection of the insulation. Bundles shall be stacked on pallets or other materials to keep them up off the ground and be covered by a tarpaulin or suitable "breathable" protective cover. DO NOT use wet insulation products in any application. Installation of wet insulation or other building components shall cause the Rmax warranties to become void. Rmax insulation that has become wet may be applied after it is allowed to thoroughly dry. All other building materials shall be stored as recommended by those manufacturers.

### Typical Physical Properties<sup>1</sup>- R-Matte Plus-3/Thermasheath-3

Property	Test Method	Results
Compressive Strength	ASTM D 1621	Refer to Data Sheets
Flame Spread, Core <sup>2</sup>	ASTM E 84	75 or Less
Smoke Developed, Core <sup>2</sup>	ASTM E84	< 450
Water Vapor Transmission	ASTM E96	< 0.3 Perm
Water Absorption	ASTM C209	< 1% Vol.
Dimensional Stability	ASTM D 2126 7 days, 158°F, 95% rh	< 2% Linear Change
Service Temperature		-40° to +250°F

#### Notes:

<sup>1</sup> Physical properties shown are based on data obtained under controlled conditions and are subject to normal manufacturing tolerances.

<sup>2</sup> Flame Spread and Smoke Developed Indexes are used to measure and describe the properties of this material in response to heat and flame under controlled laboratory conditions and should not be used to describe or appraise the fire hazard or fire risk of this material and other related roofing components under actual fire conditions.

**Limited Warranty:** Notwithstanding anything herein to the contrary, Rmax makes no representation or warranties whatsoever concerning the Product, except that the Product was manufactured in accordance with specifications set forth in ASTM C1289, at the time of purchase is free from any lien or encumbrance, and, for a period of one (1) year from the date of delivery of the Product, is free from defect in materials and workmanship. BUYER ACKNOWLEDGES AND AGREES THAT, EXCEPT AS PROVIDED ABOVE, THE PRODUCT IS BEING DELIVERED IN AN "AS IS, WHERE IS" CONDITION, AND WITH ALL FAULTS, Rmax, HEREBY DISCLAIMS, AND BUYER HERBY WAIVES, ANY AND ALL OBLIGATIONS AND LIABILITIES OF RMAX AND RIGHTS, CLAIMS, AND REMEDIES OF BUYER AGAINST RMAX, WHETHER EXPRESS OR IMPLIED, AND WHETHER ARISING BY LAW OR OTHERWISE, INCLUDING, WITHOUT LIMITATION, IMPLIED WARRANTIES OR MERCHANTABILITY OR FITNESS FOR A PARTICULAR PURPOSE, IMPLIED WARRANTIES ARISING FROM COURSE OF PERFORMANCE, COURSE OF DEALING, AND USAGE OF TRADE, AND ANY AND ALL LIABILITY WITH RESPECT TO THE PRODUCT OR SERVICES PERFORMED OR PROVIDED BY RMAX. THE WARRANTIES EXPRESSED HEREIN ARE EXCLUSIVE AND ARE GIVEN IN LIEU OF (i) ANY AND ALL OTHER WARRANTIES EXPRESS OR IMPLIED, AND (ii) ANY OBLIGATION LIABILITY, RIGHT, CLAIM OR REMEDY, IN CONTRACT, TORT OR STRICT LIABILITY, WHETHER OR NOT ARISING FROM NEGLIGENCE, ACTUAL OR IMPUTED. THE WARRANTIES EXPRESSED HEREIN SHALL BE THE EXCLUSIVE REMEDY FOR A DEFECT IN/OR DAMAGES RELATED TO THE PRODUCT.

**Limitation of Liability and Buyer's Remedies:** IN THE EVENT OF A DEFECT IN THE PRODUCT COVERED BY THE LIMITED WARRANTY SET FORTH ABOVE, RMAX SHALL AT RMAX'S OPTION AND EXPENSE, REPAIR OR REPLACE THE DEFECTIVE PRODUCT, OR REFUND THE AMOUNT PAID BY THE BUYER FOR THE DEFECTIVE PRODUCT. WITHOUT LIMITATION THE FOREGOING, Rmax SHALL NOT BE LIABLE FOR BUYER'S LOSS SPECIAL, OR CONSEQUENTIAL DAMAGES OF ANY KIND, AND BUYER HEREBY WAIVES ANY RIGHT IT MAY HAVE TO SUCH DAMAGES.

This LIMITED WARRANTY shall not be applicable to defects or damages which, upon inspection by Rmax are determined by Rmax to be caused by any of the following:

- Normal wear and tear.
- Intentional vandalism or abuse, or negligent use, misuse or abuse (including any usage not in accordance with the product instructions).
- Accident or natural disasters, including but not limited to, fire, flood, lightning, earthquake, tornadoes, hail, hurricanes, wind storms or Acts of God; or
- Improper handling, storage, application or design, structural movement, or maintenance.

Claims against Rmax under the provisions of this LIMITED WARRANTY must be made within thirty (30) days after the alleged defect to which the claim related is discovered or should have been discovered, by written notice to Rmax at the following address: 13524 Welch Road; Dallas, Texas 75244; Attention – Technical Services. The written notice must be accompanied by the dated invoice or receipt received by the Buyer at the time of purchase. Rmax shall have sixty (60) days from receipt of such notice to inspect and analyze the alleged defective material. Under no circumstances shall the material to be disposed of or to be returned to Rmax unless the Buyer has received written instructions to do so. Buyer shall have no right to deduct the amount of any claim from Rmax's invoice until the claim is allowed or adjusted. Failure on the part of the Buyer to follow these provisions shall waive all rights under this LIMITED WARRANTY. **Unless modified in writing, signed by both Rmax and Buyer, this LIMITED WARRANTY is understood to be the complete and exclusive agreement between the parties, and supercedes all prior agreements, oral or written, and all other communications between the parties relating to the subject matter of this LIMITED WARRANTY.** Some states and certain federal laws do not allow certain limitations or implied warranties, so such limitations or exclusion may not apply to you. In addition, some states do not allow the exclusion or limitation of incidental or consequential damages, so such limitation or exclusion may not apply to you. This warranty gives you specific legal rights, and you may also have other rights which vary from state to state.

Refer to SALES POLICY included with the other Rmax literature for other terms and conditions relating to the state of Rmax insulation products not contained herein.

**General Conditions:** Descriptions, specifications and recommendations described herein are subject to change without notice. Consult with Rmax Sales for the latest information. The design and construction of the roof deck and supporting structure are the responsibility of the project architect, engineer, general contractor and the building owner. The selection and use of Rmax insulation and other roofing system components to meet the requirements for a project is at the sole discretion of the owner or his designated agent or representative.

No warranty, expressed or implied, as to characteristics, physical properties, or performance under any variations from controlled conditions at time of manufacture is made. These provisions may not be altered in any way by a salesperson, employee, agent, or any other representative of Rmax, except by a letter from an officer of Rmax. Rmax does not assume any responsibility or liability for the performance of any products other than those manufactured by Rmax.

**General Provisions:** This document with all attachments constitutes the entire agreement between Rmax and the Buyer and is intended as a final, complete and exclusive expression of the agreement. This agreement supersedes all prior representations, understandings and agreements. Any failure on the part of Rmax to insist upon the performance of any term herein shall not be construed as a waiver or relinquishment of Rmax's right to such performance and Buyer's obligation shall continue in full force and effect.

**Choice of Law:** This agreement shall be governed and construed in accordance with the laws of the State of Texas.

**WARNING:** Polyisocyanurate is an organic material which will burn when exposed to an ignition source or sufficient heat and intensity, and may contribute to flames spreading.

## Rmax Sales Office and Plant Locations

E-mail us at [rmax@rmax.com](mailto:rmax@rmax.com) or visit our website [www.rmax.com](http://www.rmax.com)

### Central Division:

13524 Welch Road  
Dallas, Texas 75244-5291

Phone: 972-387-4500  
Fax: 972-387-4673  
Toll Free: 1-800-527-0890

### Eastern Division:

1649 South Batesville Road  
Greer, South Carolina 29650

Phone: 864-297-1382  
Fax: 864-234-7548  
Toll Free: 1-800-845-4455

### Western Division:

210 Lyon Drive  
Fernley, Nevada 89408

Phone: 775-575-4849  
Fax: 775-575-5035  
Toll Free: 1-800-762-9462

### Member of:



As a partner in the ENERGY STAR® Insulation Program, Rmax is working with the U.S. Environmental Protection Agency (EPA) and the U.S. Department of Energy (DOE) to educate homeowners about the benefits of adding insulation to their homes.