

INSTRUCTION MANUAL



EasyAG® Profile Probes

February 2015



Copyright © 2002 - 2009
Campbell Scientific, Inc.

EasyAG® and EnviroSMART™ are trademarks of Sentek Pty. Ltd.

WARRANTY AND ASSISTANCE

This equipment is warranted by CAMPBELL SCIENTIFIC (CANADA) CORP. ("CSC") to be free from defects in materials and workmanship under normal use and service for **twelve (12) months** from date of shipment unless specified otherwise. **** **Batteries are not warranted.** **** CSC's obligation under this warranty is limited to repairing or replacing (at CSC's option) defective products. The customer shall assume all costs of removing, reinstalling, and shipping defective products to CSC. CSC will return such products by surface carrier prepaid. This warranty shall not apply to any CSC products which have been subjected to modification, misuse, neglect, accidents of nature, or shipping damage. This warranty is in lieu of all other warranties, expressed or implied, including warranties of merchantability or fitness for a particular purpose. CSC is not liable for special, indirect, incidental, or consequential damages.

Products may not be returned without prior authorization. To obtain a Return Merchandise Authorization (RMA), contact CAMPBELL SCIENTIFIC (CANADA) CORP., at (780) 454-2505. An RMA number will be issued in order to facilitate Repair Personnel in identifying an instrument upon arrival. Please write this number clearly on the outside of the shipping container. Include description of symptoms and all pertinent details.

CAMPBELL SCIENTIFIC (CANADA) CORP. does not accept collect calls.

Non-warranty products returned for repair should be accompanied by a purchase order to cover repair costs.



Campbell Scientific (Canada) Corp.
14532 131 Avenue NW | Edmonton AB T5L 4X4
780.454.2505 | fax 780.454.2655 | campbellsci.ca

Assistance

Products may not be returned without prior authorization. The following contact information is for Canadian and international clients residing in countries served by Campbell Scientific (Canada) Corp. directly. Affiliate companies handle repairs for clients within their territories. Please visit www.campbellsci.ca to determine which Campbell Scientific company serves your country.

To obtain a Returned Materials Authorization (RMA), contact CAMPBELL SCIENTIFIC (CANADA) CORP., phone (780) 454-2505. After a measurement consultant determines the nature of the problem, an RMA number will be issued. Please write this number clearly on the outside of the shipping container. Campbell Scientific's shipping address is:

CAMPBELL SCIENTIFIC (CANADA) CORP.

RMA# _____
14532 131 Avenue NW
Edmonton, Alberta T5L 4X4
Canada

For all returns, the client must fill out a "Statement of Product Cleanliness and Decontamination" form and comply with the requirements specified in it. The form is available from our web site at www.campbellsci.ca/repair. A completed form must be either emailed to repair@campbellsci.ca or faxed to (780) 454-2655. Campbell Scientific (Canada) Corp. is unable to process any returns until we receive this form. If the form is not received within three days of product receipt or is incomplete, the product will be returned to the client at the client's expense. Campbell Scientific (Canada) Corp. reserves the right to refuse service on products that were exposed to contaminants that may cause health or safety concerns for our employees.

Table of Contents

PDF viewers: These page numbers refer to the printed version of this document. Use the PDF reader bookmarks tab for links to specific sections.

1. General	1
2. Absolute Data	1
3. Relative Data	1
4. Measurements	1
4.1 Water Content	1
4.2 Salinity	2
5. Resolution and Accuracy	2
5.1 Volumetric Water Content	2
5.2 Salinity	2
6. Specifications	4
7. Installation	5
8. Probe Wiring	5
8.1 DI-12 Interface Wiring	5
8.2 Cable Installation	6
9. Datalogger Programming	6
10. Care and Maintenance	14
11. Acknowledgements	14

Appendices

A. Normalization and Function Test	A-1
A.1 Normalization	A-1
A.1.1 Water Content Only	A-2
A.1.2 TriSCAN Normalization	A-4
A.2 Configuration Testing	A-5
B. Tube Installation	B-1
B.1 Introduction	B-1
B.1.1 Soil Suitability	B-1
B.1.2 Sledgehammer Technique	B-1

B.1.3	Soil Sampler Extraction	B-1
B.1.4	Air Gap Correction.....	B-1
B.2	Installation Tools.....	B-2
B.3	Installation Procedure.....	B-3
B.4	Removing Access Tubes	B-12

C. Site Selection..... C-1

D. SDI-12 Commands D-1

Figures

8-1.	EasyAG® SDI-12 Interface	5
A-1.	SDI-12 Interface Power Connection	A-1
A-2.	SDI-12 Interface TTL Connection	A-1
A-3.	IPConfig Utility Icon.....	A-2
A-4.	IPConfig Probe Configuration Window	A-2
A-5.	IPConfig Probe Configuration Window for TriSCAN	A-4
A-6.	IPConfig Configuration Test Window	A-5

EasyAG[®]

Soil Water Content Profile Probes

1. General

EasyAG[®] probes measure a profile of volumetric soil water content. EasyAG 50 probe measures at 10, 20, 30, and 50 cm. EasyAG 80 probe measures at 10, 30, 50, and 80 cm. TriSCAN versions of these probes also measure soil salinity.

Irrigation scheduling, waste water treatment, and other applications requiring continuous monitoring of water or water and ion movement in a soil profile may benefit from EasyAG technology. Water content measurements can be made in all soil types. Salinity measurements are restricted to sand, loamy sand, and sandy loam soils.

2. Absolute Data

EasyAG probes calibrated for a particular site, including the textural layers of a soil profile, will produce absolute and accurate data. Absolute data, however, require that sensors be calibrated for each soil type and each soil horizon. Absolute calibration is a costly and time consuming process, but must be done if absolute data are required. A manual for absolute data calibration is published by Sentek.

3. Relative Data

Relative data are produced by an EasyAG calibrated for a range of soil types, and this calibration is used as a default calibration on all soil types. Readings cannot be considered as absolute data, but instead reflect soil water and ion changes used as decision criteria in soil management.

Relative water content data have been used since at least 1992 for irrigation management, isolating factors such as depth of irrigation and rainfall, depth of effective root zone, onset of crop water stress, and avoidance of water logging. Economic gains achieved with soil profile management in commercial agriculture and waste water management are typically made using the concept of 'relative' change in soil dynamics.

4. Measurements

Sensors are measured by the probe's SDI-12 interface. The interface transmits measurements to the datalogger. TriSCAN sensors provide two outputs, water content and salinity. Both outputs can be presented as dynamic trend changes over a chosen time scale. Acceptable time stamp data range from 00:00:00 as midnight to 23:59:59.

4.1 Water Content

Sensor output is a dimensionless frequency (raw count) that is converted via a normalization equation and then a default or user-defined calibration equation

into volumetric soil water content. The measurement unit is volumetric water content (Vol %) or millimetres of water per 100 mm of soil. Acceptable data range for scaled frequencies is >0 to 1.0. Water content measurements using the default calibration range from 0 to 53%.

4.2 Salinity

Sensor output is a dimensionless frequency (raw count) that, in conjunction with the water content output signal, is proportional to changes in soil water content and salinity. A proprietary data model processes the changes of both output signals simultaneously to reflect the changes in soil salinity. The output of the data model is a nominal Volumetric Ion Content (VIC). Measurement units of VIC can be quantitatively related (benchmarked) to the soil EC through site-specific soil sampling and analysis.

Acceptable VIC data range from 1000 to 17,000. The effective salinity measurement range is between 0 and 17 dS m⁻¹ in sand, loamy sand, and sandy loam textures (Australian Soil and Land Survey Field Handbook). Salinity levels and soil textures outside this range are currently not supported by TriSCAN.

5. Resolution and Accuracy

5.1 Volumetric Water Content

The sensor has a resolution of 0.1 mm of soil moisture. Consecutive readings in equilibrated soil have a coefficient of variation of 0.1%. Accuracy of the system is dependent upon the similarity of the soil site to that of the original default soil type used by Sentek. Calibration coefficients based on this default soil type are used in normal operation. If site-specific (quantitative) values are required, then a calibration procedure is required to be performed (refer to “Calibration of Sentek Probes” Manual). A high level of accuracy can be attained with careful calibration.

5.2 Salinity

To date, statements on the resolution and accuracy of the salinity output can only be made with regard to the particular type of sand that has been used to develop the TriSCAN data processing models. These specifications do not necessarily reflect the resolution and accuracy of the sensor on any other soil types. Accuracy and precision of the sensor in the tested sand are as follows:

In saturated soil conditions at low EC 55 µS cm⁻¹:

Repeatable change of VIC to a resolution of 1 µS cm⁻¹ (Accuracy ±1.8%)

In saturated soil conditions at medium EC up to 5600 µS cm⁻¹:

Repeatable change of VIC to a resolution of 25 µS cm⁻¹ (Accuracy ± 0.4%)

VIC can be related directly to a site-specific soil EC through the use of Sentek’s Benchmarking Procedure.

The accuracy of any such relationships is dependent upon the accuracy and competency with which this procedure is performed. In Sentek’s own field

testing, strong relationships ($r^2=0.9$) have been achieved. Refer to the benchmarking section of the Sentek TriSCAN manual.

Precise temperature effects on salinity data output are currently unknown. It is however, known that there is a minor positive relationship between VIC and soil temperature. The salinity model currently does not include temperature correction.

6. Specifications

Feature	EasyAG® SDI-12
Maximum cable length to logger or third party device	60 m (200 ft)*
Maximum sensors per standard probe	4
Sensor Measuring Principle	High frequency capacitance
Output Options	SDI-12
Protocol options	SDI-12
Interface Measuring Principle	16 Bit pulse count
Output Resolution	16 Bit
Output Method	Serial data
Current Consumption	250 μ A @ Sleep 66 mA @ Standby 100 mA @ Sampling
Reading range	Water Content/Salinity 0 to ~65%/0 to 17 dSm ⁻¹
Temperature effects	\pm 3% 5°C to 35°C
Operating temperature range	-20°C to +75°C
Time to read one sensor	1.1 seconds
Sphere of influence	99% of the reading is taken within a 10 cm radius from the outside of the access tube
Sensor diameter	26.5 mm
Access tube diameter	32 mm
Probe length	50 cm (20 inches)
* Based on SENSDI12CBL-L cable.	

7. Installation

Several configurations are possible when using the EnviroSMART™ / EasyAG® Probes with Campbell Scientific dataloggers. Among those configuration are the following:

Option 1 (Preferred)

<u>Device</u>	<u>Function</u>
Probe	Output scaled frequency
Datalogger	Store scaled frequency, calculate and store water content

Option 2

<u>Device</u>	<u>Function</u>
Probe	Output water content
Datalogger	Store water content

Option 1 allows for use of data in Sentek’s Irrimax Software, which allows for application of new soil calibrations after data are collected. Option 1 is used for the purposes of this manual.

Refer to the installation manual published for each probe for information on access tube installation. Appendix A addresses probe normalization.

8. Probe Wiring

A very small flat-point screw driver is used to open the gates of the EasyAG® terminals before insertion of wires. Tighten the gate screws after inserting wires.

8.1 DI-12 Interface Wiring

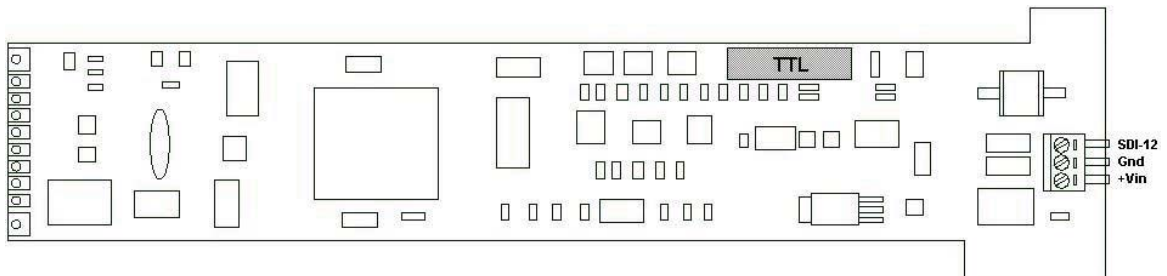


FIGURE 8-1. EasyAG® SDI-12 Interface

<u>Probe</u>	<u>Pin</u>	<u>CR10X / CR23X</u>	<u>CR200 Series</u>
SDI-12	3	C1	C1 / SDI-12
Gnd	2	G or \perp	\perp
+Vin	1	12 V	SW Battery

8.2 Cable Installation

Securely tighten the gland nut through which the cable passes into the probe cap. Inject a small amount of silicon sealant into the sensor end of the cable to ensure that water or water vapor will not pass into the probe.

9. Datalogger Programming

Example program corresponds to setup example in Appendix A.

Sample CR1000 Program

Shaded portions of program can be omitted if TriSCAN sensors are not used.

```

'CR1000 Datalogger
'Program Author: Campbell Scientific, Inc.
'Date: 04-12-06

'Description:   Program measures 1 EnviroSMART / TriSCAN probe with 8 sensors or 1 EasyAG
'               TriSCAN probe with 4 sensors. -1000 is loaded as the "measurement" for
'               non-existent sensors. Program measures scaled frequencies, calculates
'               water contents, and stores scaled frequencies, water contents, and
'               volumetric ion contents separately. Scaled frequencies are stored with an
'               "array identifier" leading 8 data values per record followed by 8 VIC per
'               record, with the record ending with zero rain and irrigation values for
'               compatibility with DBLOAD & Irrimax software.

'Assumptions:  EnviroSMART or EasyAG probe SDI-12 interface is configured to output
'               scaled frequencies

'Wiring:       EnviroSMART / EasyAG 12 Volts (Pin 1)----- CR1000 12 V
'               EnviroSMART / EasyAG Ground (Pin 2)----- CR1000 Ground
'               EnviroSMART / EasyAG Signal (Pin 3)----- C7

'               Rain Gage Pulse Out ----- CR1000 P2
'               Rain Gage Ground ----- CR1000 Ground

'Program Declarations

'Public (Displayed) Variables
Public ES1_ID(1)
Public ES1_SF(8)
Public ES1_WC(8)
Public ES1_VIC(8)
Public Rain_mm
Public Irrig_mm

'EasyAG / EnviroSMART Scale Frequency to Water Content Calibration Co-efficients
Const a = .1957
Const b = .404
Const c = .02852
    
```

```
'Program Control Variables
```

```
Dim X
```

```
'Definition of DataTables
```

```
DataTable (ES1_SF,1,-1)
```

```
Sample (1,ES1_ID,FP2)
```

```
Sample (8,ES1_SF(1),FP2)
```

```
Sample (8,ES1_VIC(1),FP2)
```

```
Totalize (1,Rain_mm,FP2,False)
```

```
Sample (1,Irrig_mm,FP2)
```

```
EndTable
```

```
DataTable (ES1_WC,1,-1)
```

```
Sample (8,ES1_WC(1),FP2)
```

```
EndTable
```

```
'Program
```

```
BeginProg
```

```
'Set Probe ID
```

```
ES1_ID = 101
```

```
'Set Scan Interval
```

```
Scan (30,Sec,3,0)
```

```
'Preload Inactive Sensor Error (covers all missing sensors)
```

```
For X = 1 to 8 step 1
```

```
ES1_SF(X) = -1000
```

```
ES1_VIC(X) = -1000
```

```
Next X
```

```
'Measure Water Content Scaled Frequencies (SF) with 5 retries
```

```
'See Appendix D for other SDI-12 commands
```

```
For X = 1 to 5 step 1
```

```
SDI12Recorder (ES1_SF(),7,0,"M!",1.0,0)
```

```
If ES1_SF(1) <> NAN then ExitFor
```

```
Next X
```

```
'Measure Electrical Conductivity VIC with 5 retries
```

```
For X = 1 to 5 step 1
```

```
SDI12Recorder(ES1_VIC(1),7,0,"M2!",1,0)
```

```
If ES1_VIC(1) <> NAN then ExitFor
```

```
Next X
```

```

'Load Measurement Failure Errors
If ES1_SF(1) = NAN Then ES1_SF(1) = -99999 'If probe fails (NAN at first sensor)
For X = 1 to 8 step 1 'Load -99999 to all sensors
  If ES1_SF(1) < -9999 Then
    ES1_SF(X) = -99999
    ES1_WC(X) = -99999
    ES1_VIC(X) = -99999
  Else '...OR...
    If ES1_SF(X) < -999 Then 'If a WC sensor fails (indicated by -1000)
      ES1_WC(X) = -99999 'Load NAN for water content
    Else '...OR...
      ES1_WC(X) = ((ES1_SF(X) - c)/a)^(1/b) 'apply calibration
    EndIf
  EndIf
Next X

'Measure rain
PulseCount (Rain_mm,1,2,2,0,.01,0)

'Input irrigation events manually in Irrimax, 0 must be written to data file
Irrig_mm = 0

'Output Data to Storage
CallTable ES1_SF 'Store Scaled Frequency and VIC Data with Rain and Irrigation
                  'for Irrimax Software
CallTable ES1_WC 'Store Water Content Data

'Next Scan
Next Scan

'End Program
EndProg

```

Sample CR10X Program

Shaded portions of program can be omitted if TriSCAN sensors are not used.

```

;CR10X Datalogger
;Program Author: Campbell Scientific, Inc.
;Date: 04-12-06

;Description:      Program measures 1 EnviroSMART / TriSCAN probe with 8 sensors or 1
EasyAG
;                  TriSCAN probe with 4 sensors. -1000 is loaded as the "measurement" for
;                  non-existent sensors. Program measures scaled frequencies, calculates
;                  water contents, and stores scaled frequencies, water contents, and
;                  volumetric ion contents separately. Scaled frequencies are stored with an
;                  "array identifier" leading 8 data values per record followed by 8 VIC per
;                  record, with the record ending with zero rain and irrigation values for
;                  compatibility with DBLOAD & Irrimax software.

;Assumptions:     EnviroSMART or EasyAG probe SDI-12 interface is configured to output
;                  scaled frequencies

;Wiring:          EnviroSMART / EasyAG 12 Volts (Pin 1) ----- CR10X 12 V
;                  EnviroSMART / EasyAG Ground (Pin 2) ----- CR10X Ground
;                  EnviroSMART / EasyAG Signal (Pin 3) ----- C7

;                  Rain Gage Pulse Out ----- CR10X P2
;                  Rain Gage Ground----- CR10X Ground

;{CR10X}
;
*Table 1 Program
  01: 30          Execution Interval (seconds)

;Load Scaled Frequency to Water Content Co-efficients

a = .1957
b = .404
c = .02852

;Preload missing sensor error

1: Beginning of Loop (P87)
  1: 0            Delay
  2: 8            Loop Count

  2: Z=F x 10^n (P30)
    1: -1000     F
    2: 0          n, Exponent of 10
    3: 1         -- Z Loc [ ES1_SF_1 ]

```

```

3: Z=F x 10^n (P30)
  1: -1000    F
  2: 0        n, Exponent of 10
  3: 17       -- Z Loc [ ES1_VIC_1 ]

4: End (P95)

;Measure water content scaled frequencies (SF)

5: Beginning of Loop (P87)
  1: 0        Delay
  2: 5        Loop Count

;See Appendix D for other SDI-12 commands

6: SDI-12 Recorder (P105)
  1: 0        SDI-12 Address
  2: 0        Start Measurement (aM0!)
  3: 7        Port
  4: 1        Loc [ ES1_SF_1 ]
  5: 1.0      Mult
  6: 0        Offset

7: If (X<=>F) (P89)
  1: 1        X Loc [ ES1_SF_1 ]
  2: 2        <>
  3: 0        F
  4: 31       Exit Loop if True

8: End (P95)

;Measure salinity volumetric ion content (VIC)

9: Beginning of Loop (P87)
  1: 0        Delay
  2: 5        Loop Count

10: SDI-12 Recorder (P105)
  1: 0        SDI-12 Address
  2: 2        Start Measurement (aM2!)
  3: 7        Port
  4: 17       Loc [ ES1_VIC_1 ]
  5: 1.0      Mult
  6: 0        Offset

11: If (X<=>F) (P89)
  1: 17       X Loc [ ES1_VIC_1 ]
  2: 2        <>
  3: 0        F
  4: 31       Exit Loop if True

12: End (P95)

```



```
;Load measurement failure errors
```

```
13: If (X<=>F) (P89)
```

```
1: 1      X Loc [ ES1_SF_1 ]
2: 1      =
3: 0      F
4: 30     Then Do
```

```
;Measurement of 0 at 1st sensor
;indicates an inactive probe.
;
```

```
14: Z=F x 10^n (P30)
```

```
1: -99999 F
2: 0      n, Exponent of 10
3: 1      Z Loc [ ES1_SF_1 ]
```

```
;Set 1st sensor reading to -99999
```

```
15: End (P95)
```

```
16: Beginning of Loop (P87)
```

```
1: 0      Delay
2: 8      Loop Count
```

```
;Loop to set error codes
```

```
17: If (X<=>F) (P89)
```

```
1: 1      X Loc [ ES1_SF_1 ]
2: 4      <
3: -9999 F
4: 30     Then Do
```

```
;If 1st sensor reading is < -9999 i.e. = -99999
;then set all sensor readings to -99999
```

```
18: Z=F x 10^n (P30)
```

```
1: -99999 F
2: 0      n, Exponent of 10
3: 1      -- Z Loc [ ES1_SF_1 ]
```

```
19: Z=F x 10^n (P30)
```

```
1: -99999 F
2: 0      n, Exponent of 10
3: 9      -- Z Loc [ ES1_WC_1 ]
```

```
20: Z=F x 10^n (P30)
```

```
1: -99999 F
2: 0      n, Exponent of 10
3: 17     -- Z Loc [ ES1_VIC_1 ]
```

```
21: Else (P94)
```

```
;Otherwise, if a sensor scaled frequency
;< -999, i.e. = -1000
```

```
22: If (X<=>F) (P89)
```

```
1: 1      -- X Loc [ ES1_SF_1 ]
2: 4      <
3: -999   F
4: 30     Then Do
```

```
23: Z=F x 10^n (P30)
```

```
1: -99999 F
2: 0      n, Exponent of 10
3: 9      -- Z Loc [ ES1_WC_1 ]
```

```
;Set water content data to -99999
```

```

24: Else (P94)                                     ;Otherwise, calculate water content for
                                                ;the sensor

25: Z=X-Y (P35)
1: 1      -- X Loc [ ES1_SF_1 ]
2: 29     Y Loc [ C      ]
3: 9      -- Z Loc [ ES1_WC_1 ]

26: Z=X/Y (P38)
1: 9      -- X Loc [ ES1_WC_1 ]
2: 30     Y Loc [ A      ]
3: 9      -- Z Loc [ ES1_WC_1 ]

27: Z=1/X (P42)
1: 32     X Loc [ B      ]
2: 34     Z Loc [ RecipB ]

28: Z=X^Y (P47)
1: 9      -- X Loc [ ES1_WC_1 ]
2: 34     Y Loc [ RecipB ]
3: 9      -- Z Loc [ ES1_WC_1 ]

29: End (P95)                                     ;End If

30: End (P95)                                     ;End If

31: End (P95)                                     ;Next Loop

;Measure Rain

32: Pulse (P3)
1: 1      Reps
2: 1      Pulse Channel 1
3: 2      Switch Closure, All Counts
4: 25     Loc [ Rain_mm ]
5: .1     Mult
6: 0      Offset

;Input irrigation events manually in Irrimax, 0 must be written to data file

33: Z=F x 10^n (P30)
1: 0      F
2: 0      n, Exponent of 10
3: 26     Z Loc [ Irrig_mm ]

;Output SF & VIC Data to Storage

34: Do (P86)
1: 10     Set Output Flag High (Flag 0)

```

```

35: Set Active Storage Area (P80)
   1: 1          Final Storage Area 1
   2: 101       Array ID

36: Real Time (P77)                               ;Midnight = 0000 required by Irrimax
Software
   1: 1110      Year,Day,Hour/Minute (midnight = 0000)

37: Sample (P70)
   1: 8         Reps
   2: 1         Loc [ ES1_SF_1 ]

38: Sample (P70)
   1: 8         Reps
   2: 17        Loc [ ES1_VIC_1 ]

39: Totalize (P72)
   1: 1         Reps
   2: 25        Loc [ Rain_mm ]

40: Sample (P70)
   1: 1         Reps
   2: 26        Loc [ Irrig_mm ]

;Output Water Content Data to Storage

41: Do (P86)
   1: 10        Set Output Flag High (Flag 0)

42: Set Active Storage Area (P80)
   1: 1         Final Storage Area 1
   2: 201       Array ID

43: Real Time (P77)
   1: 1220      Year,Day,Hour/Minute (midnight = 2400)

44: Sample (P70)
   1: 8         Reps
   2: 9         Loc [ ES1_WC_1 ]

*Table 2 Program
  02: 0.0000    Execution Interval (seconds)

*Table 3 Subroutines

End Program

-Input Locations-
1 ES1_SF_1 5 6 4
2 ES1_SF_2 1 1 0
3 ES1_SF_3 1 1 0
4 ES1_SF_4 1 1 0
5 ES1_SF_5 1 1 0
6 ES1_SF_6 1 1 0
7 ES1_SF_7 1 1 0
8 ES1_SF_8 1 1 0

```

9	ES1_WC_1	1 3 5
10	ES1_WC_2	1 1 0
11	ES1_WC_3	1 1 0
12	ES1_WC_4	1 1 0
13	ES1_WC_5	1 1 0
14	ES1_WC_6	1 1 0
15	ES1_WC_7	1 1 0
16	ES1_WC_8	1 1 0
17	ES1_VIC_1	5 2 3
18	ES1_VIC_2	1 1 0
19	ES1_VIC_3	1 1 0
20	ES1_VIC_4	1 1 0
21	ES1_VIC_5	1 1 0
22	ES1_VIC_6	1 1 0
23	ES1_VIC_7	1 1 0
24	ES1_VIC_8	1 1 0
25	Rain_mm	1 1 1
26	Irrig_mm	1 1 1
27	_____	0 0 0
28	_____	0 0 0
29	C	1 1 0
30	A	1 1 0
31	_____	0 0 0
32	B	1 1 0
33	_____	0 0 0
34	RecipB	1 1 1

10. Care and Maintenance

Probe electronics will be damaged if exposed to water or condensation. A proper installation must include active desiccant in the cap of each probe. Be certain the gland nut through which the cable passes is tight. Also, maintain the silicon plug material in the sensor end of the cable to ensure water vapor does not pass into the probe through the cable.

11. Acknowledgements

Campbell Scientific, Inc. gratefully acknowledges the contribution of Sentek Pty Ltd to concepts, text, and images used in this manual.

Appendix A. Normalization and Function Test

Normalization is the setting of the range over which the electronics is effective. This range is bounded by the two extremes of air and water.

A.1 Normalization

Connect +12 Volts DC and ground to the green connector at the top of the probe as shown in FIGURE A-1.

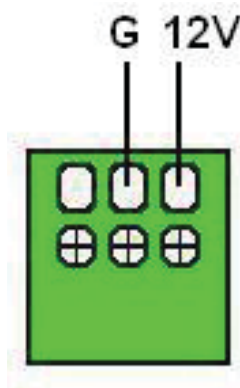


FIGURE A-1. SDI-12 Interface Power Connection

Connect the Intelligent Probe Utility Cable (P/N SEN06018) to the TTL port near the top of the probe at the location indicated in FIGURE A-2.

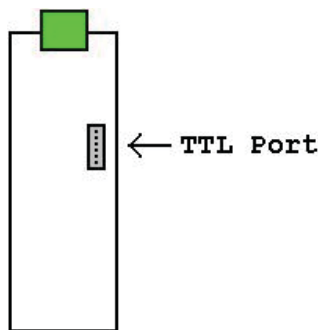


FIGURE A-2. SDI-12 Interface TTL Connection

Connect the other end of the utility cable to the serial port on a PC. This may require a 9 to 25 pin serial adaptor. CSI serial cable (P/N 7026) is available as an adaptor.

Start the IPConfig Utility (Intelligent Probe Utility Software, P/N SEN06025) on the PC by clicking on the IPConfig Utility icon (shown in FIGURE A-3).



FIGURE A-3. IPConfig Utility Icon

Click “Connect” in the upper right area of the IPConfig window. The software will connect to the probe and set up a configuration window.

A.1.1 Water Content Only

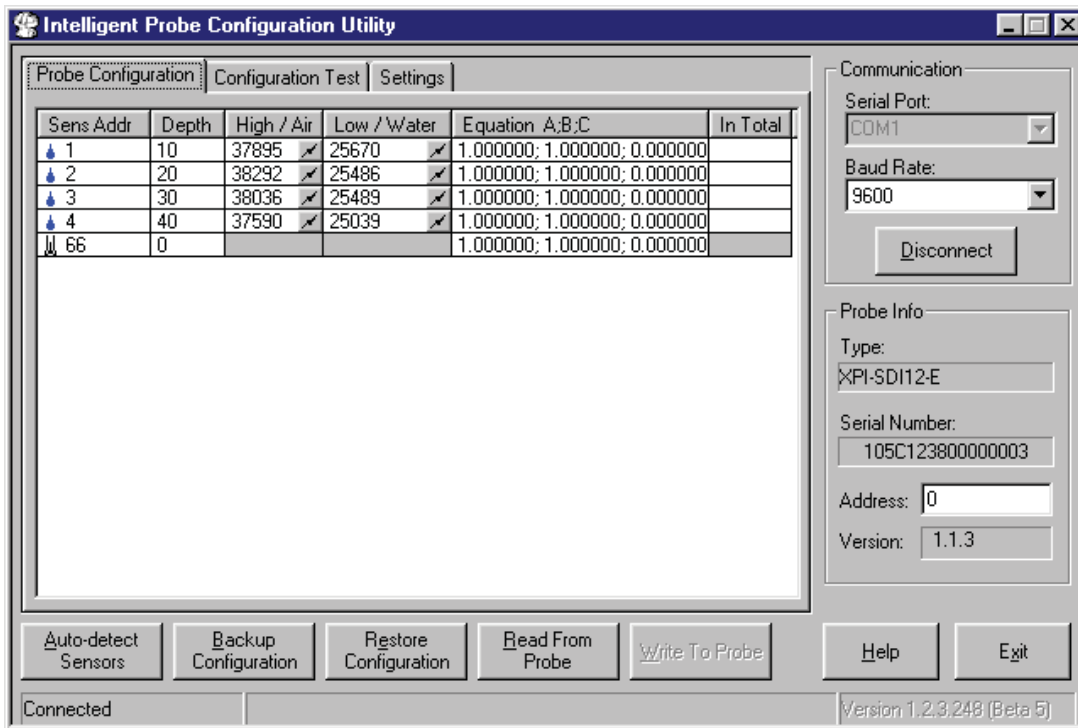




FIGURE A-4. IPConfig Probe Configuration Window

FIGURE A-4 shows an IPConfig Utility Probe Configuration window after normalization is complete on a three-sensor probe with sensors placed at 10, 20, and 30 cm. Complete the following operations for a new probe:

1. Click on “Auto-detect Sensors” in the lower left corner. Wait until all sensors are auto-detected. If the number of sensors detected does not correspond with the number of sensors on the probe, check to ensure that each sensor is addressed sequentially, beginning with address 1 on the top sensor.
2. Enter the depth of each sensor in the “Depth” column. Each depth will be a multiple of 10.
3. Enter “1.000000;1.000000;0.000000” on each line in the “Equation A;B;C” column.
4. Hold the probe in the air, away from any other object, with your hands away from the sensors, i.e. set the end of the probe on the floor and hold it upright. For each sensor, press the “High / Air” toggle button . Allow about 10 seconds, then toggle the button off. Values will be within a few thousand of those shown in the example above.
5. Fill the normalization chamber (P/N SEN70056) or a deep bucket with water. If using the normalization chamber, take the probe out of the access tube. For each sensor, slide the probe into the normalization chamber tube such that the sensor is in the center of the tube. If using a bucket, submerge most of the white tube portion of the probe into the center of the bucket. Do not submerge the blue portion of the probe, or allow the electronics to get wet. Press the “Low / Water” toggle button . Allow about 10 seconds, then toggle the button off. Values will be within a few thousand of those shown in the example above.
6. Set the SDI-12 probe address in the lower right area of the IPConfig window. The SDI-12 address is used in the datalogger program. If only one probe is to be used on a datalogger SDI-12 input channel, you may leave the address at “0.”
7. Press “Write to Probe” in the lower right of center of the window.
8. Press “Backup Configuration” in the lower left of center of the window. Use the default file name.

A.1.2 TriSCAN Normalization

When normalizing TriSCAN sensors for water content, follow the procedure in A.1.1 using distilled or deionized water in step 5. As illustrated in FIGURE A-5, the same procedure is followed when normalizing TriSCAN sensors for salinity.

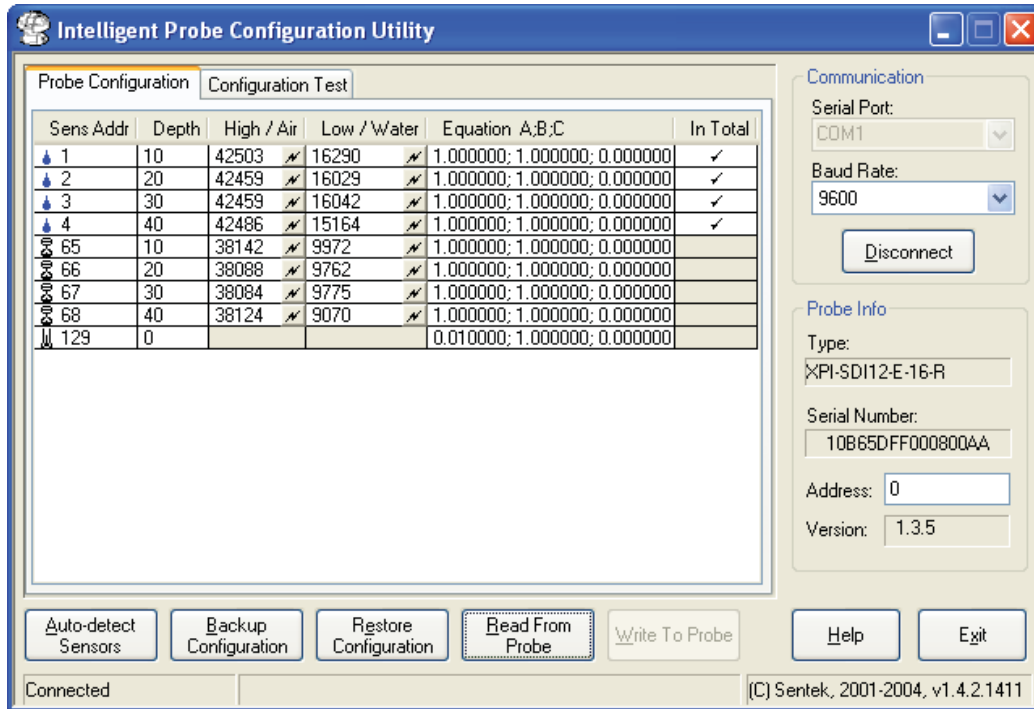


FIGURE A-5. IPConfig Probe Configuration Window for TriSCAN

A.2 Configuration Testing

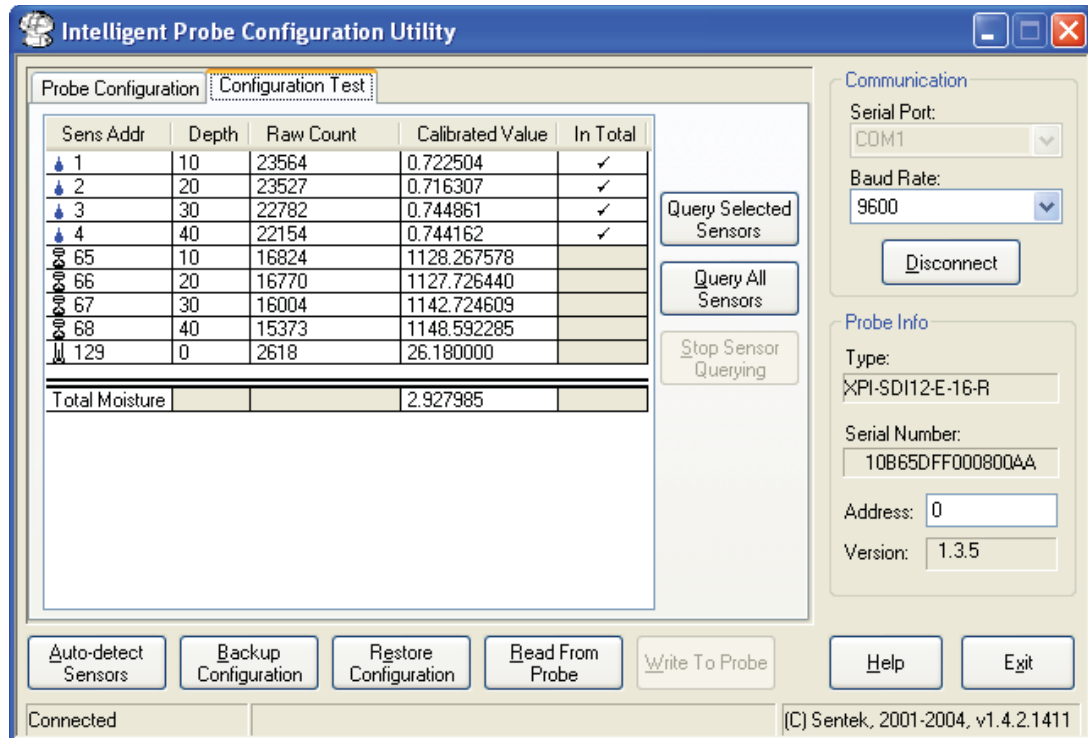


FIGURE A-6. IPConfig Configuration Test Window

Test the configuration by going to the “Configuration Test” tab as shown in FIGURE A-6. Again, with the probe in the access tube, hold the probe in the air, then press “Query All Sensors.” Press “Stop Sensor Querying” when values appear in the window. Raw counts should be close to the values shown in the example above.

Appendix B. Tube Installation

B.1 Introduction

B.1.1 Soil Suitability

EasyAG™ may be installed into a range of soil types ranging in texture from light sand to heavy clay. It is unsuitable for installation into stony ground where the average stone size is greater than 10 mm. Larger stones may damage the plastic cutting tip of the probe and divert the direction of the insertion.

EasyAG™ is also not suited to insertion into dry ground, as this causes significant back pressure when using the sledgehammer and leads to damage at the top of the access tube. The potential insertion site should be moistened to a depth of 1 meter before installation.

In hard soils, it is possible to cause minor damage to the top of the access tube in the top cap. If this occurs, simply remove the burred edges with a sharp knife or file when fully inserted, so that the electronic circuitry may be installed. Care must be taken in any subsequent re-installations, as the available surface area for contact of the EasyAG™ dolly will be reduced. EasyAG™ is ideal for well tilled cultivated soils such as commonly found in vegetable production areas.

B.1.2 Sledgehammer Technique

Blows from the sledgehammer should be well directed straight down onto the beating head of the soil auger with as little lateral (sideways) impact as is possible. This minimizes the formation of an air gap between the soil and the access tube. Any air gap here will result in preferential path flow of water down the access tube and into deeper soil layers.

B.1.3 Soil Sampler Extraction

When extracting the soil sampler, care must be taken so that the integrity of the hole is not compromised. The soil sampler must be pulled directly and smoothly upward.

At no stage should the soil sampler be reinserted, as this will damage the hole integrity. It is better to simply start again if the installation is not progressing well.

B.1.4 Air Gap Correction

At every stage, the formation of an air gap between the soil and the access tube must be limited. If this is unavoidable, then there are some corrective measures that may be taken.

Small air gaps of 1 – 2 mm between the soil and the access tube near the surface may be closed with light finger pressure without causing major errors in the soil moisture detection.

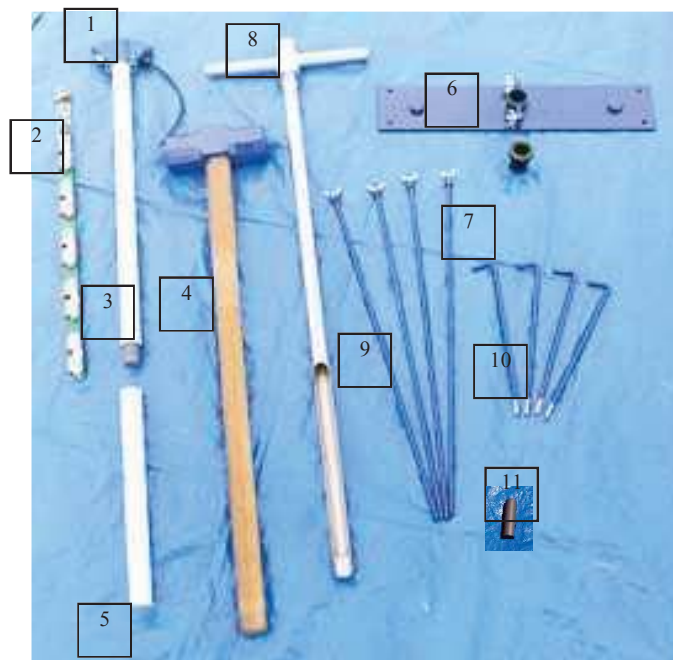
A significant air gap of greater than 2 mm between the soil and the access tube near the surface may be corrected by carefully pushing a spade into the soil

adjacent to the probe and gently levering the soil against the tube. The spade should be at least 15 cm away from the access tube when this is done to limit any error in the soil moisture detection. The installation should be re-done at another site if correction of air gaps is not progressing well.

B.2 Installation Tools

The basic components required for the EasyAG™ installation are shown below:

- Top Cap
- EasyAG™ sensor board
- Probe access tube and joiner
- Sledgehammer
- Cutting tip
- Stabilization brace
- Soil sampler polyguide
- Soil Auger
- Stabilization brace pins (long)
- Stabilization brace pins (short)
- EasyAG™ dolly



The complete list of items required for the installation of the EasyAG™ probe:

- Sledgehammer
- Soil Auger
- Stabilization Brace
- Soil Sampler Polyguide
- Stabilization Brace Pin (Long)
- Stabilization Brace Pin (Short)
- EasyAG™ Dolly
- Cable
- Cable Connector
- Fair Rite™ Bead
- Bin for Normalization
- Screwdriver (flat, small)
- Screwdriver (Phillip's Head, Small)
- Screwdriver (Jeweler's fine, flat – interface dependent)
- Wire Cutters
- Wire Strippers
- Spade
- Gloves
- Safety Goggles
- Personal Computer
- Tarpaulin
- Silicone Glue

B.3 Installation Procedure

Step 1 - Assemble and Install the Stabilization Brace

The stabilization brace can be used on both flat ground and raised soil beds. There are two different types of stabilization brace pins. Short pins are for flat ground, and long pins are for raised soil beds.

Option A. Flat Ground

Place the stabilization brace on the ground where the probe is to be situated. Insert the stabilization brace pins through the holes in the stabilization brace.



Drive the stabilization brace pins all the way into the ground using a sledgehammer. The stabilization brace should be in firm contact with the soil without compressing it significantly.



Put the soil sampler polyguide in place. The stabilization brace is now ready for insertion of the AMS soil sampler. Refer below from Step 5: Preparing the hole as for raised soil bed installation.

Option B. Raised Soil Bed

Insert each of the four long stabilization brace pins into the holes in the stabilization brace and tighten the wing nuts with light finger pressure.



Place the assembled stabilization brace on the ground directly above the required position of the probe. Apply gentle pressure directly down onto the stabilization brace to force the pins into the ground.



Using a sledgehammer alternately beat the stabilization brace at the points provided to force it closer to the ground. Do not beat continuously on any one side in advance of the other. The aim is to achieve a situation where the pins are near parallel in the ground.



The stabilization brace should be firm to the ground without causing significant soil compression.

WARNING

Do not compress the soil such that normal water infiltration into the soil is likely to be inhibited. This is particularly important on clay soils.

Insert the soil sampler polyguide.



Step 2 - Augering the hole

Insert the soil auger and force downward in a single smooth action by hand until the resistance becomes too great.



Using a sledgehammer beat the auger into the ground all the way. Ensure accurate blows are made such that lateral deflection of the soil sampler is minimized. Do not compress the soil with the final blow.



WARNING

Do not compress the soil such that normal water infiltration is inhibited.

Turn the auger one single complete rotation.



Carefully lift the AMS soil sampler directly out of the ground. If you experience difficulties at this point, remove the soil sampler in stages, or obtain extra assistance to avoid back injury. To remove the soil collected in the soil sampler, simply beat on its side with the hand or foot. The design is such that the soil core taken is slightly compressed, and of a lesser internal diameter than the soil sampler itself. Deposit this soil away from the probe site.



Remove the auger polyguide.



Step 3 - Assembling the EasyAG™ probe

Attach the cutting tip to the base of the probe with firm pressure. No glue is required.

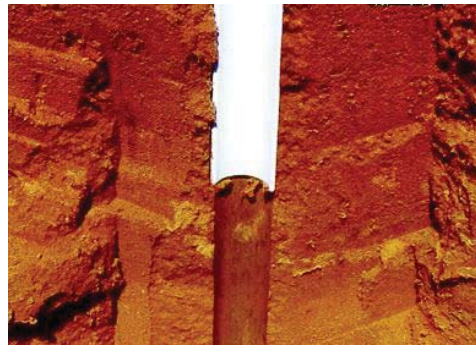


Step 4 - Inserting the access tube

Insert the assembled complete probe into the stabilization brace and push it into the ground in a single gentle movement as far as it will go. Do not cause undue inflection of the access tube, as this will destroy the integrity of the installation.



As the probe enters the prepared hole in the soil, it shaves off a residue that is eventually stored in the cutting tip at the base of the hole.



Remove the lid of the top cap and extract the electronics. Place this safely to one side on a clean, dry surface such as a tarpaulin.



Insert the EasyAG™ dolly into the top cap and position it on top of the internal access tube.



Continue inserting the probe using a sledgehammer until there is a 2.5 cm (1 inch) gap between the base of the top cap and the edge of the stabilization brace tube guide.

NOTE

A 2.5 cm clearance height is important.



Remove all of the stabilization brace wing nuts.



Lift both sections of the stabilization brace to clear the threads of the stabilization brace pins.



Separate the two halves of the stabilization brace and remove them.



Continue inserting the probe into the ground with gentle blows of the sledgehammer using the EasyAG™ dolly until the base of the top cap is level with the ground. This will place the top sensor at 10 cm (3.9 inches) below the ground surface.



Remove the EasyAG™ dolly, thread a Fair Rite™ bead onto a loop in the cable but do not tighten it into place yet (refer to final installation photo for this).



Push the cable through the cable gland and attach the wiring according to the diagram in Section 4.

Step 5 - Inserting the Electronics

Reinstall the sensor circuitry and attach the connector or attach wiring as required. Tighten the cable gland and seal around the inside threaded section with silicone glue.

Step 6 – Fitting the Top Cap Lid

Replace the lid of the top cap. Tighten the screws completely to ensure an effective seal.



WARNING

Ensure that the sealing gasket is in good condition and is positioned correctly.

Remove the stabilization brace pins by turning them and pulling upward.

Tighten the Fair Rite™ bead into place.



B.4 Removing Access Tubes

Removal of access tubes is a relatively easy process in sandy soils. It may be done with the electronics in place. Simply excavate a little soil from near the surface, grab the probe access tube or top cap, give a couple of twists, and pull upward.

In heavy clay soils, removal of the EasyAG™ probe may require a greater depth of soil to be excavated before it is possible to remove it by hand.

To assist in this, a mattock may be used. Apply gentle levering pressure underneath alternate sides of the top cap. Move the access tube a little at a time, adding sufficient height underneath the mattock as required.



WARNING

Caution is required here such that the top cap and access tube are not damaged.

As no glue is used in the connection of the cutting tip to the probe access tube, the cutting tip section can be removed for easy cleaning using one of the long stabilization brace pins. In heavy soils, the cutting tip may not be recoverable without digging to the full depth. If this is likely to be the case, the cutting tip may be glued into place prior to installation.



WARNING

Under no circumstances should a wrench be used on the access tube, especially while the electronics is still in place, as this may cause damage to the probe.

Appendix C. Site Selection

Site selection is a critical process for all soil water sensors. A properly selected site will reflect changes in soil moisture and plant water use trends over a larger area. This area may be an entire field, sub-section of a field, a crop variety, a planting, a soil type, etc. Putting a sensor in a 'dry zone' or under the influence of a malfunctioning sprinkler will invalidate data to some degree.

Site selection is carried out by identifying macro-zones and micro-zones.

Macro-zone selection divides the property in zones according to soil type, soil depth, water holding capacity, and water tables and salinity. Irrigation applications can be specifically tailored to these zones to match soil and crop variability as a macro zone consists of areas with similar crop water use.

Micro-zone selection determines the position of access tubes in relation to the crop and irrigation system and considers the areas of the root zone, canopy spread, water distribution uniformity, and moisture pattern of drip irrigation. Measurements are taken from a small part of the root-zone. If the extent and depth of the root-zone is misjudged and/or when sensors are placed in dry or wet spots associated with a bad distribution uniformity of water, the soil water data will not indicate optimal irrigation scheduling.

Important factors to take into consideration for site selection are:

1. Soil spatial variability
2. Topography
3. Aspect of sloping land
4. Crop type
5. Crop age
6. Crop planting density
7. Size and extent of the effective root system of the crop
8. Irrigation system layout and flexibility
9. Water Distribution uniformity
10. Moisture patterns under drip irrigation.

Appendix D. SDI-12 Commands

The SDI-12 EasyAG probe interface communicates with Campbell Scientific dataloggers by way of SDI-12 protocol. A complete treatment of SDI-12 communications for the EasyAG is available from Sentek or Campbell Scientific in the [EnviroSMART & EasyAG SDI-12 Probe Interface Manual](#). Commonly used commands are listed below. Refer to Edlog and CRBasic help for information on how to use these commands while programming Campbell Scientific dataloggers.

The EasyAG probe interface accepts SDI-12 addresses in the range of “0” to “9”, “A” to “Z”, and “a” to “z”.

SDI-12 Command*	Function
aAb!	Change address (for use in terminal emulator)
aM!	Read soil moisture values 1 to 9
aM1!	Read soil moisture values 10 – 16
aM2!	Read salinity values 1 to 9
aM3!	Read salinity values 10 to 16

*where “a” is the probe address

