

iPFG 2.2

Desktop Fitting Guide

New:

- Versáta
- Certéna
- Power CIC



Table of contents

1	New products in iPFG 2.2
2	Introduction
3	iPFG Modes
4	Initial Fit
5	Follow Up Fit
6	End Fitting
7	iCube – CableFree Fitting device

1 New Products in iPFG 2.2

Versáta – Life in motion



Life is all about adapting to change – especially for your clients with a dynamic lifestyle. To keep pace with the modern living they need a hearing system flexible enough to accommodate the ever-changing soundscape. Versáta is truly up to the challenge. SoundFlow seamlessly adapts with an optimized program for each unique situation. And with full wireless connectivity, Versáta offers the versatility and convenience to meet the demands of a life in motion. Help your clients enjoy the challenges of a dynamic life – offer them Versáta.

Certéna – Confidence in life



Certéna offers your clients reliable performance, freedom from feedback and the confidence to interface with the world. Certéna is the only product in its segment to offer WhistleBlock Technology, SoundFlow, wireless connectivity and CableFree Fitting. Let your clients participate in those everyday activities that make life so enjoyable: offer them a hearing system that can be depended on – offer them Certéna.

Power CIC – more power and smaller size



Phonak proudly offers the smallest Power CIC in the industry, available for the

- **Exélia**
- **Versáta**
- **Certéna**

product lines. Phonak Power CICs deliver the greatest power-to-size ratio of any devices in their class. The fitting range of the Power CIC accommodates most severe hearing losses. With a broader and flatter audio frequency spectrum than standard devices, Phonak Power CICs provide improved speech intelligibility, less distortion and better overall sound quality. And they are available with our unique AOV (Acoustically Optimized Vent) technology to ensure both optimal vent design and enhanced fitting results.

2 Introduction

This desktop fitting guide describes the relevant steps of a typical fitting via NOAH using iPFG version 2.2. We recommend fitting Phonak hearing instruments using either iCube or NOAHlink for faster programming, however HI-PRO is acceptable. When using iCube as a fitting device, it is necessary to insert a battery into the hearing instruments. The different hearing instrument families may have different fitting screens during the fitting process. If you require help, please consult the help area inside iPFG.



New – create your own scenes

The new iPFG Media player offers to integrate almost every kind of sounds, pictures and video clips into the fitting and counseling procedure. With its simple drag & drop mechanism for the addition of scenes, the iPFG Media Player provides an intuitive and easy interface for the composition of sounds and visuals, which can be matched with the clients' daily life experiences.

The Surround 5.1 playback capability of the iPFG Media Player will allow to present most realistic sound environments, which highlight the signal processing capabilities of the hearing instruments.

The iPFG Media Player features a hearing loss simulator, also for the added scenes. This makes the iPFG Media Player the ideal tool to involve parents and care givers into the counseling process.

iPFG Surround Sounds – a new extension DVD for iPFG 2.2 and later versions – will provide realistic Surround 5.1 sound environments through out the whole fitting and counseling process – entirely embedded in iPFG 2.2.

3 iPFG Modes

Standard Mode / Fitting Wizard

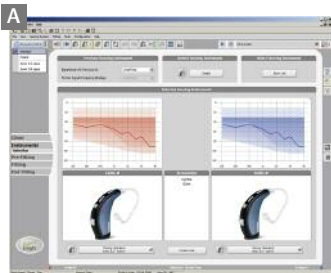
To differentiate the ways, how iPFG can be run, the normal way to fit hearing instruments with iPFG is called "Standard" mode. Alike former versions, this "Standard" mode offers the known flexibility, integrating the well-known Phonak audiological know-how. iPFG is preset – by default – for fitting adults in this "Standard" mode.



Fitting Wizard

The Wizard can be started from within the "Standard" mode (see above) and allows fast and easy guided fittings, offering just the main components and functionalities of iPFG.

Junior Mode



iPFG includes two "Junior" modes to help to accomplish precise, accurate, and efficient pediatric fittings. The "Junior" modes are one-click pediatric configurations within iPFG: once a "Junior" mode is chosen, evidence based software defaults, tailored to children, are activated. The defaults are chosen on the child's date of birth. If the development age of the child differs, the appropriate "Junior" mode from the drop down can be chosen **A**.

"Junior" modes are available for all iPFG hearing instruments. iPFG will automatically select a "Junior" mode, based on:

- Date of Birth "Junior 0-4" is selected for children below the age of 5. "Junior 5-8" is selected for children younger than 9 years of age.
- Selection or detection of a Junior Instrument
- Selection of a Junior Mode from the drop down menu



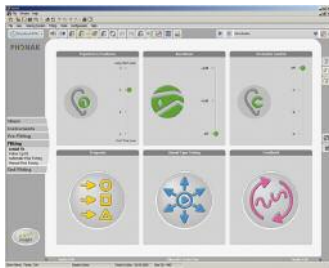
B All defaults can be customized in "Configuration-Junior Settings" to suit your particular pediatric fitting needs.

Printable, tailored materials for parents, caregivers and teachers are available in iPFG. An invaluable counseling support, the Junior reports provide all the necessary information needed for parents to understand the child's hearing loss and their hearing system. The Junior reports can be easily accessed in the "Print-Junior Reports" menu.

For more detailed information on how to use the Junior Mode, please see "About Junior Mode" in the iPFG Help Menu.

4 Initial Fit

Initial Fit



A BassBoost

The BassBoost slider will appear in the Initial Fit screen for all power instruments. BassBoost is a unique feature that provides power users with improved loudness perception, leading to better user acceptance and audibility. As soon as a CIC/MC P, ITE FS P (33 FS P), BTE SP (411), or BTE UP is detected, iPFG will show a dialog box, recommending the activation of the extended BassBoost range. It is highly recommended to activate this feature as it provides additional gain and MPO in the low frequencies.



B Feedback test

The feedback test is adaptive and will start testing at frequencies where feedback is most likely to occur rather than sweeping through the frequencies in a consecutive manner. Click "Start" to run the feedback test. If, after starting the feedback test, the noise floor rises, an information balloon tip informs you about it. If the test cannot be completed for some reason, but enough data has already been collected, iPFG will extrapolate the missing information to provide the most appropriate feedback settings for that client.



C Program manager

Beginning with version 2.0, iPFG offers a program manager, which uses drag & drop for program arrangement. Alternatively, programs (configuration points) can be moved by clicking on "to Manual" button [1].

Program arrangement:

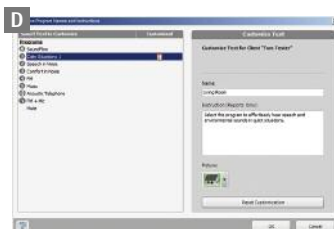
The Program Pool on the left side of the screen lists all available programs that can be selected. Click on a program to drag and drop it. All possible positions available for the program will be highlighted.

To change the order, select a program and drop it in the desired space or click the upwards/downwards buttons next to the program structure [2]. The other programs will move to the next position.

By clicking on the link icon next to a program you can create an independent program [3] or link it to SoundFlow automatic. The independent program is fully accessible in the Fine-Tuning screens. If all program spaces in the HI are filled up, creation of an independent program will not be possible anymore. To delete a program, select it and drop it in the trash can icon [4].

Enable ZoomControl:

This feature is exclusively for binaural Exélia hearing instruments with VoiceZoom and myPilot [6].



D Rename a program:

To customize the name of a manual program, click on the Customize icon [5] at the top right side of the screen and the Customize dialog box will open. The customized names are shown as a subtitle in italics below the original program name. This subtitle will be displayed in the instructions printouts and in the display screen of myPilot.

After "Fitting" go to "End Fitting".

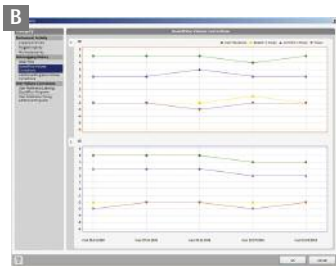
5 Follow Up Fit

Fitting > DataLogging



A Logging overview

This screen provides a general overview of usage time, as before, but now also provides Smart Tips. This function analyzes client hearing instrument usage in daily life, detects unexpected user behavior and gives alerts and tips to manage the possible issues. Smart Tips, an additional support to optimize the use of DataLogging, are displayed only if an alert is available and can be accessed at any time by clicking on the "Smart Tip Status" icon at the right side of a fitting screen.

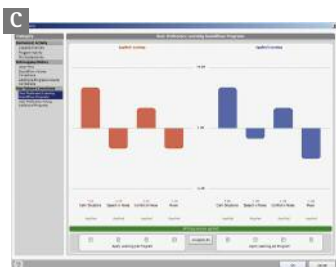


B DataLogging history

This completely new section summarizes the main logging data for the last five appointments with your client. It offers a quick overview of your previous sessions and the impact of your fine tuning actions during these visits.

SoundFlow and additional program volume corrections

These graphs show the average volume corrections made by your client for each automatic or manual program and for the left and/or right ear. This displays trends across a five appointment range. This DataLogging option is only available for Exélia, Versáta, Certéna, and Naida.



C User Preference Learning

This feature is exclusively available for Exélia, Audéo IX, Savia Art, and Versáta. It lets you view the volume changes learned and applied by the instrument. Since the changes have already been applied, you may choose to un-apply these changes individually or altogether.

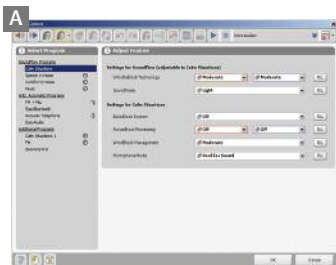


D User Preference Tuning

User Preference Tuning displays volume preferences for each environment with separate screens for automatic and additional programs. You can apply the suggested changes individually by checking the desired tickboxes or altogether by clicking "apply all".

You are free to apply or un-apply the suggested changes (User Preference Tuning) or to cancel or keep the applied changes (User Preference Learning, if available). User Preference Learning is only available for automatic programs, while User Preference Tuning is available for both automatic and manual programs.

Fitting > Fine Tuning

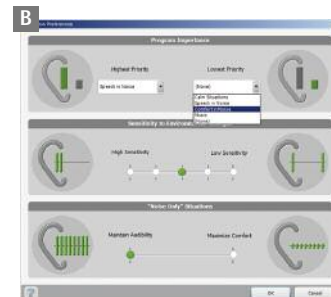


A Program options

In Program Options, Sound Cleaning features can be adjusted by selecting a specific program and feature. ZoomControl (only available for Exélia in combination with myPilot) offers user-selectable directional listening. The default direction is "front", but you can change the default direction.

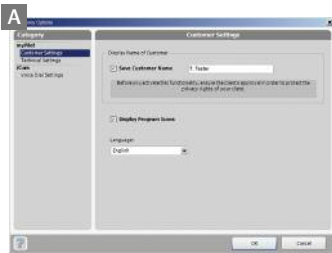
B SoundFlow preferences

The highest and lowest priority can be assigned to one of the programs (configuration points), proportionally altering the final SoundFlow program blend.



No grouping is required for iView!

Accessory Options



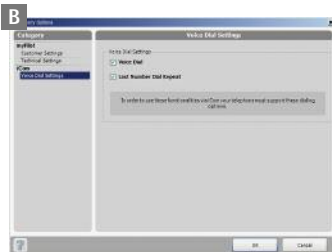
In Accessory Options it is possible to adjust the settings of myPilot as well as iCom streaming programs.

A myPilot settings

The name of the customer can be shown in the myPilot display. Mark the appropriate checkbox and modify the name if desired.

By default each program will be displayed with a program picture. If the customer prefers just text, deselect the checkmark Display Program Icon. A dropdown box will offer you a choice of myPilot languages.

The country specific date and time settings will be taken from your computer. If needed, another format can be chosen. The timer of the backlight interval can also be adjusted.




B iCom settings

In this screen, you can change the settings for iCom in combination with cell phones. Checking "Voice Dial" will enable spoken voice dialing by pressing the iCom button for 2 seconds. Checking "Last Number Dial Repeat" will allow the client to repeat the last dialed number by short double-presses on the iCom's button. The availability of these functions depends on the capabilities of the addressed cell phones.

Save & Back to NOAH



Click "Save & Back to NOAH" to save the client's settings to the hearing instruments and NOAH database before exiting iPGF.

 For further information, please refer to the "Help for current screen".

7 iCube – CableFree Fitting Device

iCube – Easy and fast programming without cables



iCube offers fast and easy programming without cables. iCube enables cable free transfer of fitting data from your PC directly to the new wireless hearing instruments.

To establish a connection between the computer and iCube, click on "CableFree Fitting Status" on the right side of the fitting screen. If iCube has not been paired with your computer, a wizard will start and guide you easily through the pairing process. The existing Bluetooth settings under Windows must not be changed. **Please make sure that a battery is inserted into the hearing instruments.**

If a connection already exists, a status monitor appears and displays all relevant information for the established connection.

iCube is an additional fitting device and can be used for all CORE products (except Petite devices) Exélia, Versáta, Certéna and Naida. Starting with Versáta and Certéna, iCube gives you access to the most complete product portfolio in the market!

By clicking "Save" (Save and Back to NOAH), iPGF will save all data in the HI's to the database – and if applicable – to the selected wireless digital accessories.



Life is on

We are sensitive to the needs of everyone who depends on our knowledge, ideas and care. And by creatively challenging the limits of technology, we develop innovations that help people hear, understand and experience more of life's rich soundscapes.

Interact freely. Communicate with confidence.
Live without limit. Life is on.