

LOCKNETICS™

MG Series

Electromagnetic locks



Overview

The MG Series of surface mount electromagnetic locks provides a dependable, cost competitive, slim profile solution. It's offered in single and double lock configurations for both standard and Door Status Sensor with Timer (DT) models. The MG Series covers a wide range of applications with holding strengths of up to 600 or 1200 pounds.

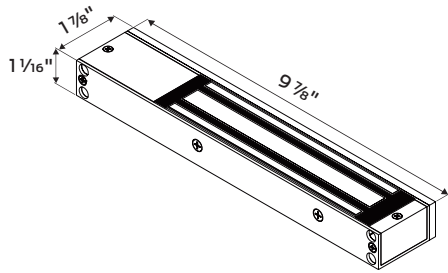
Features and benefits

- 600 lb. hold force model for traffic control applications
- 1200 lb. hold force model for high security applications
- Bi-colored LED sensor provides easy lock status identification
- Adjustable mounting plate for quick, simple installation
- Removable Printed Circuit Board (PCB) for easy configuration
- Built-in voltage spike suppressor
- Field selectable 12/24 VDC
- Stainless steel housing in 630 satin finish
- 5-year limited warranty

DT models only:

- Door status sensor for Single Pole Double Throw (SPDT) switch to determine if door is open or closed
- Timer to provide a 0-90 second delay for relocking

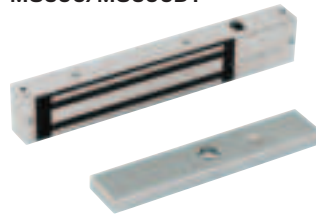
MG600 Series



Electromagnetic lock specifications

Specification	MG600/MG600DT	MG600-2/MG600DT-2
Holding force	600 lb.	600 lb.
Input voltage (field selected)	12/24 VDC	12/24 VDC
Current draw (amps standard unit)	12 VDC @ 0.5A 24 VDC @ 0.26A	12 VDC @ 1A 24 VDC @ 0.5A
BHMA finish	630 Satin Stainless Steel	630 Satin Stainless Steel
Height	1 7/8" (47.2mm)	1 7/8" (47.2mm)
Length	9 7/8" (250mm)	19 3/4" (501.7mm)
Depth	1 1/16" (26.5mm)	1 1/16" (26.5mm)
Armature dimensions (each)	7 5/16" x 1 1/2" x 1/2" (185mm x 38mm x 12.5mm)	7 1/3" x 2 2/5" x 3/5" (185mm x 61mm x 16mm)
Weight	2.22 lbs.	4.97 lbs.
Certifications	UL10C listed, UL294 listed, indoor use only	UL10C listed, UL294 listed, indoor use only

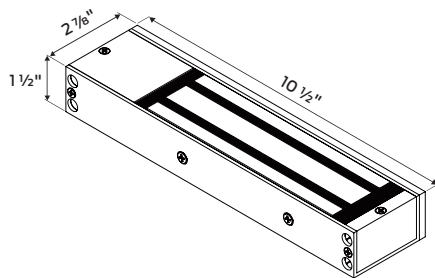
MG600/MG600DT



MG600-2/MG600DT-2



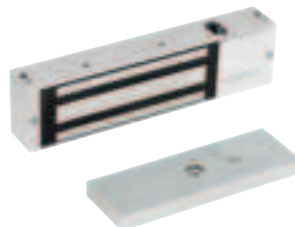
MG1200 Series



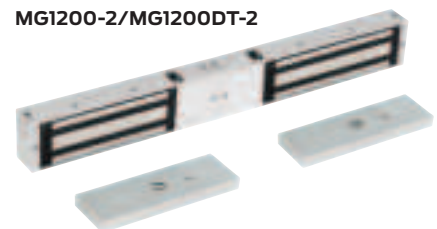
Electromagnetic lock specifications

Specification	MG1200/MG1200DT	MG1200-2/MG1200DT-2
Holding force	1200 lb.	1200 lb.
Input voltage (field selected)	12/24 VDC	12/24 VDC
Current draw (amps standard unit)	12 VDC @ 0.5A 24 VDC @ 0.26A	12 VDC @ 1A 24 VDC @ 0.5A
BHMA finish	630 Satin Stainless Steel	630 Satin Stainless Steel
Height	2 7/8" (73mm)	2 7/8" (73mm)
Length	10 1/2" (266mm)	21" (533.4mm)
Depth	1 1/2" (40mm)	1 1/2" (40mm)
Armature dimensions (each)	7 1/3" x 2 2/5" x 3/5" (185mm x 61mm x 16mm)	7 1/3" x 2 2/5" x 3/5" (185mm x 61mm x 16mm)
Weight	4.97 lbs.	11 lbs.
Certifications	UL10C listed, UL294 listed, indoor use only	UL10C listed, UL294 listed, indoor use only

MG1200/MG1200DT



MG1200-2/MG1200DT-2



Optional accessories

- U bracket for glass door
- Z bracket for inswinging doors
- L bracket for narrow frame and outswinging doors
- Filler plates

MG Series ordering and accessories

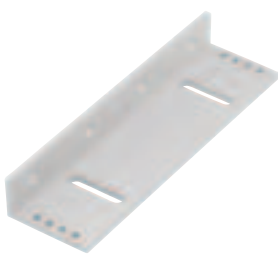
Product name	Product description	Finish	Ordering UPC
MG600	Mag lock - 600lb	630/US32D	043156646173
MG600DT	Mag lock - monitored 600lb	630/US32D	043156646180
MG600-2	Double mag lock - 600lb ¹	630/US32D	043156081103
MG600DT-2	Double mag lock – monitored 600lb ¹	630/US32D	043156081110
MG1200	Mag lock - 1200lb	630/US32D	043156646241
MG1200DT	Mag lock - monitored 1200lb	630/US32D	043156646258
MG1200-2	Double mag lock - 1200lb ¹	630/US32D	043156081127
MG1200DT-2	Double mag lock - monitored 1200lb ¹	630/US32D	043156081134
Z-brackets			
MZBK600 ¹	Z-bracket - 600lb	628/US28	043156646197
MZBK1200 ¹	Z-bracket - 1200lb	628/US28	043156646265
U-brackets			
MUBK ¹	U-bracket - 600lb/1200lb, adjustable	628/US28	043156646203
L-brackets			
MLBK600 ¹	L-bracket - 600lb	628/US28	043156646210
MLBK1200 ¹	L-bracket - 1200lb	628/US28	043156646289
Filler plates			
MFP50 ¹	¹ / ₂ " Filler plate	628/US28	043156646234
MFP63 ¹	⁵ / ₈ " Filler plate	628/US28	043156646227

1. Double mag locks require the use of two brackets (L,Z,U) and/or filler plates when applied.

MLBK600 - L bracket



MLBK1200 - L bracket



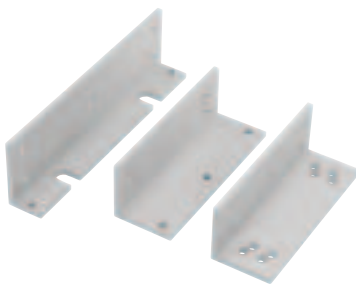
MUBK - U bracket



MZBK600 - Z bracket



MZBK1200 - Z bracket



MFP50/MFP63 - Filler plates

1/2" and 5/8" sizes available



This page intentionally left blank.

Allegion, the Allegion logo, Locknetics and the Locknetics logo are trademarks of Allegion plc, its subsidiaries and/or affiliates in the United States and other countries. All other trademarks are the property of their respective owners.

About Allegion

Allegion (NYSE: ALLE) is a global pioneer in seamless access, with leading brands like CISA®, Interflex®, LCN®, Schlage®, SimonsVoss® and Von Duprin®. Focusing on security around the door and adjacent areas, Allegion secures people and assets with a range of solutions for homes, businesses, schools and institutions. Allegion had \$2.9 billion in revenue in 2019 and sells products in almost 130 countries. For more, visit www.allegion.com



KRYPTONITE ■ LCN ■  ■ STEELCRAFT ■ VON DUPRIN

© 2021 Allegion
013789, Rev. 04/21
www.allegion.com/us