

WALKER

Illustrated Parts Manual

B25p



Beginning S/N: 126729
Ending S/N 131796
Effective Date: 02.07.14
P/N 4000-8

KEY TO ABBREVIATIONS USED IN THIS MANUAL

<i>Abbreviation</i>	<i>What it Represents</i>
° (Dimension)	Degrees (Angle)
" (Dimension)	inches
(-)	Negative (Polarity)
(+)	Positive (Polarity)
AT	All-Terrain
CCW	Counter-clockwise
Conn	Connector
CW	Clockwise
D	Diameter
DC	Deck, Collection (number refers to size in inches)
DM	Deck, Mulching (number refers to size in inches)
DR	Deck, Rear Discharge (number refers to size in inches)
DS	Deck, Side Discharge (number refers to size in inches)
DU	Garlock (Bearing)
ESNA (Fastener)	Nylon Insert Locknut
FSC	Forward Speed Control
GA	Gauge
gal	gallon
GHS	Grass Handling System
GR (Fastener)	Grade
HD	Heavy Duty
HP	Horse Power
ID	Identification or Inside Diameter
L	Length
LH	Left Hand (orientated with operator on seat)
LP	Low Profile
mm (Dimension)	millimeters
MS (Fastener)	Machine Screw
NS (as part number)	Item is not sold by Walker Manufacturing
OD	Outside Diameter
oz	ounce
PFH (Fastener)	Phillips Flat Head
P/N	Part Number
PPH (Fastener)	Phillips Pan Head
PTH (Fastener)	Phillips Truss Head
PTO	Power Take-Off
QKS	Quick Slide
qt	quart
RH	Right Hand (orientated with operator on seat)
SAE (Fastener)	Society of Automotive Engineers
SBH (Fastener)	Socket Button Head (Bolt)
SD	Side Discharge
SFH (Fastener)	Slotted Flat Head
SHC (Fastener)	Socket Head Cap
SHL (Fastener)	Shoulder (Bolt)
SM (Fastener)	Sheet Metal (Screw)
S/N	Serial Number
SQH (Fastener)	Square Head
SS (Fastener)	Stainless Steel
ST (Fastener)	Self-Tapping (Screw)
Term	Terminal
V	Volts

NOTE: In some instances, combinations of abbreviations may be used (e.g. PPHMS - Phillips Pan Head Machine Screw).

Beginning S/N 126729

Ending S/N 131796

Effective Date 02-07-14

Use only genuine **Walker®** replacement parts.

ILLUSTRATED PARTS LIST

<i>Section of Tractor Covered</i>	<i>Page</i>	<i>Section of Tractor Covered</i>	<i>Page</i>
<hr/>		<hr/>	
Decals		Electrical Components	
Tractor Decals	2	Electrical Assembly	14
Body / Chassis Assemblies		Maintenance	
Body / Chassis Assembly	4	Lubrication Points	16
Tractor Components		Wiring Schematic.....	18
Main Component Power Transmission	6	Maintenance And Service Record Sheet.....	19
Engine Group.....	8	Operator's Notes	20
Hydrostatic Ground Drive Assemblies.....	10	Warranty	
Steering Control Assemblies.....	12	Limited Warranty	21

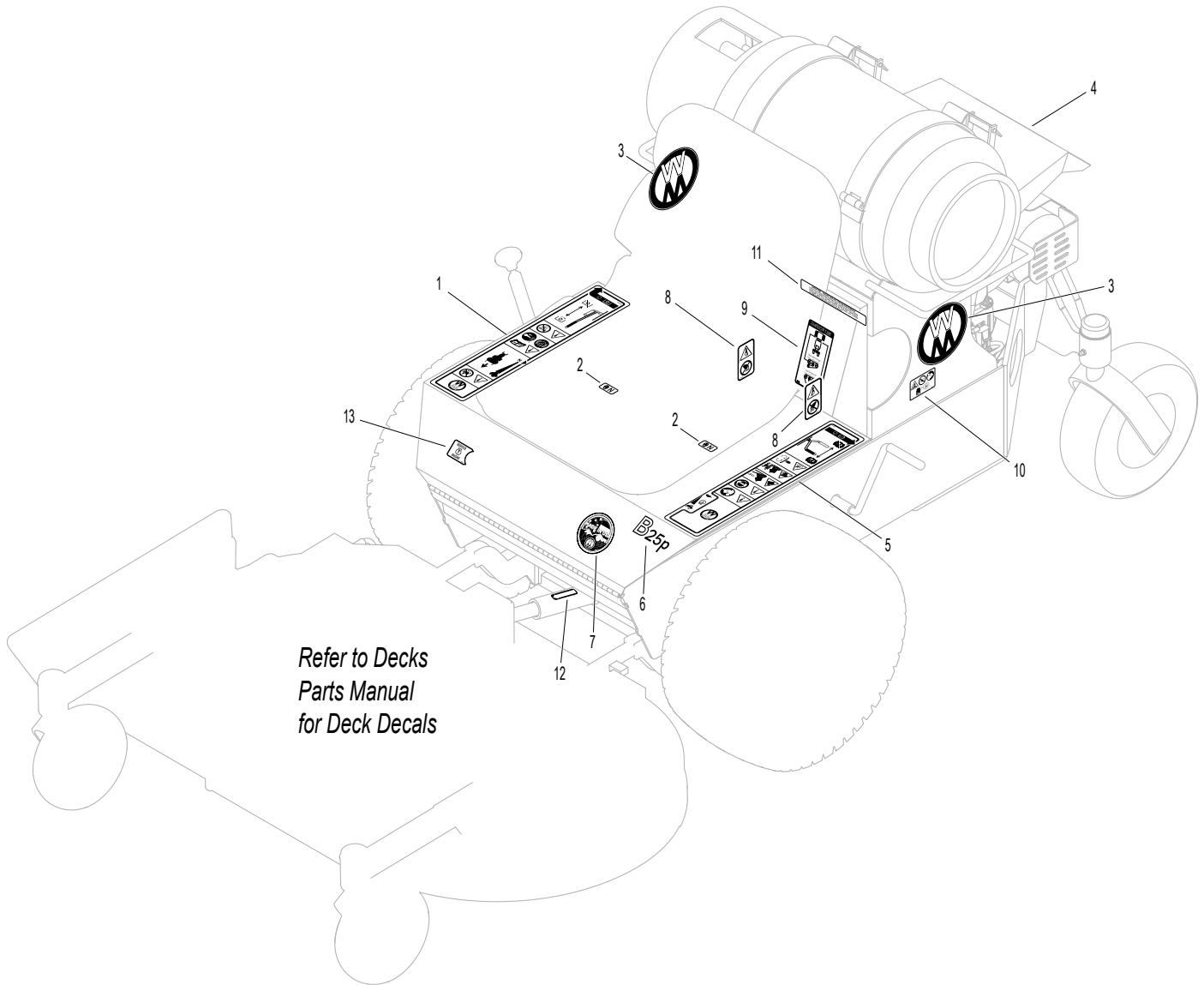
TRACTOR DECALS

ITEM NO.	PART NO.	DESCRIPTION	LOCATION	NO. REQ'D SD
Walker Product and Operation Decals				
1	8600-26	RH Fender	Body, RH Side Near Seat	1
2	9804-1	Axle Lockout	Chassis	2
3	5800-9	Decal, Walker (4-3/4")	Rear Body (one on each side)	2
4	5800-7	Decal, Walker (8")	Rear Body	1
5	8600-25	LH Fender	Body, LH Side Near Seat	1
6	8821-19	Decal, B25p	Body	1
7	5856-1	Made In USA	Body	1
Danger Decals Warning Decals Caution Decals				
8	8600-2	Decal, Danger	Flex Coupling Guard (one on each side)	2
9	4107-12	Decal, Belt Routing	Rear Body, Underside	1
10	8600-12	Caution, Engine Exhaust	Engine	1
Maintenance Decals				
11	5855	Important, Engine Cooling	Engine	1
12	6875	PTO Alignment Arrow	Universal Joint Tube Assembly	1
13	5802-3	Engine Service Light	Body	1

NOTE: All parts requiring decals are shipped with decals applied.

Beginning S/N 126729
 Ending S/N 131796
 Effective Date 02-07-14
 Use only genuine **Walker**[®] replacement parts.

TRACTOR DECALS



*Refer to Decks
Parts Manual
for Deck Decals*

BODY / CHASSIS ASSEMBLY

ITEM NO.	PART NO.	DESCRIPTION	NO. REQ'D	ITEM NO.	PART NO.	DESCRIPTION	NO. REQ'D
Seat Assembly				Deck Support Arm & Hitch Assemblies			
1	5103	Seat	1	47	4301-10	Deck Arm Support Mount	1
2	7223-4	Compression Spring	2	48	6840-1	Support Arm Bushing (2-1/16)	2
3	7845-1	Rubber Bumper (1.375 x .750)	2	49	4431-1	Deck Support Arm, LH (Includes Item # 35)	1
4	7434	Washer (3/8 x 1-1/4 x 1/4)	2	50	5775-2	Hitch Pin (#6)	2
5	5841-1	Retainer Washer	2	51	4430-1	Deck Support Arm, RH (Includes Item # 35)	1
6	7440-5	Shock Mount (1-1/4 x 3/4)	2	Tilt-Up Latch Assembly**			
Body Assembly				52	5847	Plastic Tip	1
7	4301-7	Propane Tank Mount	1	53	5744-20	Spring Arm, Tilt-Up Latch	1
8	4105-10	Rear Body Hinge (2 x 13)	1	54	5744-10	Spring Pivot Bushing	1
9	4105-6	Rear Body	1	55	5744-15	Compression Spring (3/8 x 5/8)	1
10	5146	10mm Ball Stud	4	56	5744-13	Mount Angle, LH	1
11	5155-4	Gas Spring	1	57	5744-12	Hook, Tilt-Up Latch	1
12	5147	Spring Clip	2	58	5744-14	Mount Angle, RH	1
13	4100-48	Front Rear Body	1	Fasteners			
14	5989-4	Dome Plug (3/8)	2	F002	10-24 Keps Nut		11
15	5989-3	Dome Plug (5/16)	2	F004	1/4-20 Keps Nut		15
16	4100-4	Front Body	1	F005	1/4-20 ESNA Nut		1
17	4102-1	Body Guide, Upper	1	F009	5/16-18 Whiz Locknut		22
18	5845	Rubber Bumper (1.50 x 1.25)	2	F013	3/8-16 Whiz Locknut		2
19	5180	Edge Molding / Lever Opening	2	F020	5/16-18 ESNA Nut		1
20	4504-3	Hinge (19")	1	F025	10-24 x 3/8 PPHMS		5
21	5989-5	Dome Plug (7/16)	1	F028	10-24 x 3/4 PPHMS		1
Chassis Assembly				F029	1/4-20 x 1/2 Hex Bolt		4
22	4910-6	Battery Mount	1	F034	5/16-18 x 3/4 Hex Bolt		9
23	4215-9	Shock Mount / Body Lift Arm	1	F038	3/8-16 x 1 Hex Bolt		1
24	4301-8	Chassis Frame	1	F051	3/8 SAE Washer		1
25	4102-2	Body Guide, Lower	1	F079	A/A66D Aluminum Pop Rivet		4
26	7222	Extension Spring (1/4 x 3)	1	F093	5/16-18 x 1 Hex Bolt		2
27	7854	Plastic Tip, Red	1	F116	1/4-20 x 1-1/4 Hex Bolt		1
28	7383-1	Body Latch Hook	1	F128	10-24 x 3/8 PTHMS		4
29	4145-2	Gas Spring Assembly (Includes Item # 10)	1	F200	7/16-20 x 3 Grade 8 Bolt		2
Spread Tail Wheel Assembly				F218	7/16 Split Lock Washer		4
30	4401-4	Washer (1-3/4 x 3/8 x 1/4 Thk)	1	F219	7/16-14 x 1-1/4 Hex Bolt		4
31	4301-2	Fiberglide Thrust Washer	2	F226	5/16-18 x 7/8 Hex Bolt		1
32	4301-3	Fiberglide Bearing	2	F227	3/8 x 1-1/4 x 1/8 Washer		2
33	5830-3	Grease Fitting (45 Deg.)	1	F246	1/4-20 x 1/2 PTHMS		8
34	4301-1	Tail Wheel Pivot (Includes Items # 32, 33 & 35)	1	F257	3/8 x 1-11/16 Shoulder Bolt		2
35	5830	Grease Fitting	4	F278	3/8 Split Lock Washer		1
36	8769-8	Dust Cap, Deck Caster	2	F341	Coil Roll Pin (7/64 x 9/16)		1
37	8769-6	Bearing Cone (1" ID)	4	F342	5/16 Conical Washer		2
38	8769-5	Bearing Cup (2 x 1-5/8)	4	F344	3/4-16 Slotted Hex Nut		2
39	8769-7	Seal	2	F347	3/4 SAE Washer		2
40	8765-11	Caster Wheel Fork	2	F348	1/8 x 1-1/2 Cotter Pin		2
41	8767	Axle, Caster Wheel (5-1/8)	2	F381	1/4-20 Hex Nut		1
42	8037-1	Seal, Outer (1-3/4 x 1-1/8)	4	F388	3/8-16 x 2-1/2 Hex Bolt		2
43	8037	Bearing Cone (3/4 ID)	4	F430	7/16-20 ESNA Nut		2
44	8768	Caster Wheel, Pneumatic (11 x 4.00-5)	2	F475	1/4-20 x 1 PFH Screw		1
	8768-3	Tire, Pneumatic (11 x 4.00-5)	*	F477	1/4-20 x 5/8 Carriage Bolt		2
	8768-5	Caster Wheel (5 x 3)	*	* Service Part Only			
45	8768-2	Seal, Reverse Lip	2	** Complete Tilt-Up Latch Assembly available by ordering P/N 5744-5.			
46	8766	Axle Nut (3/4-16)	2				

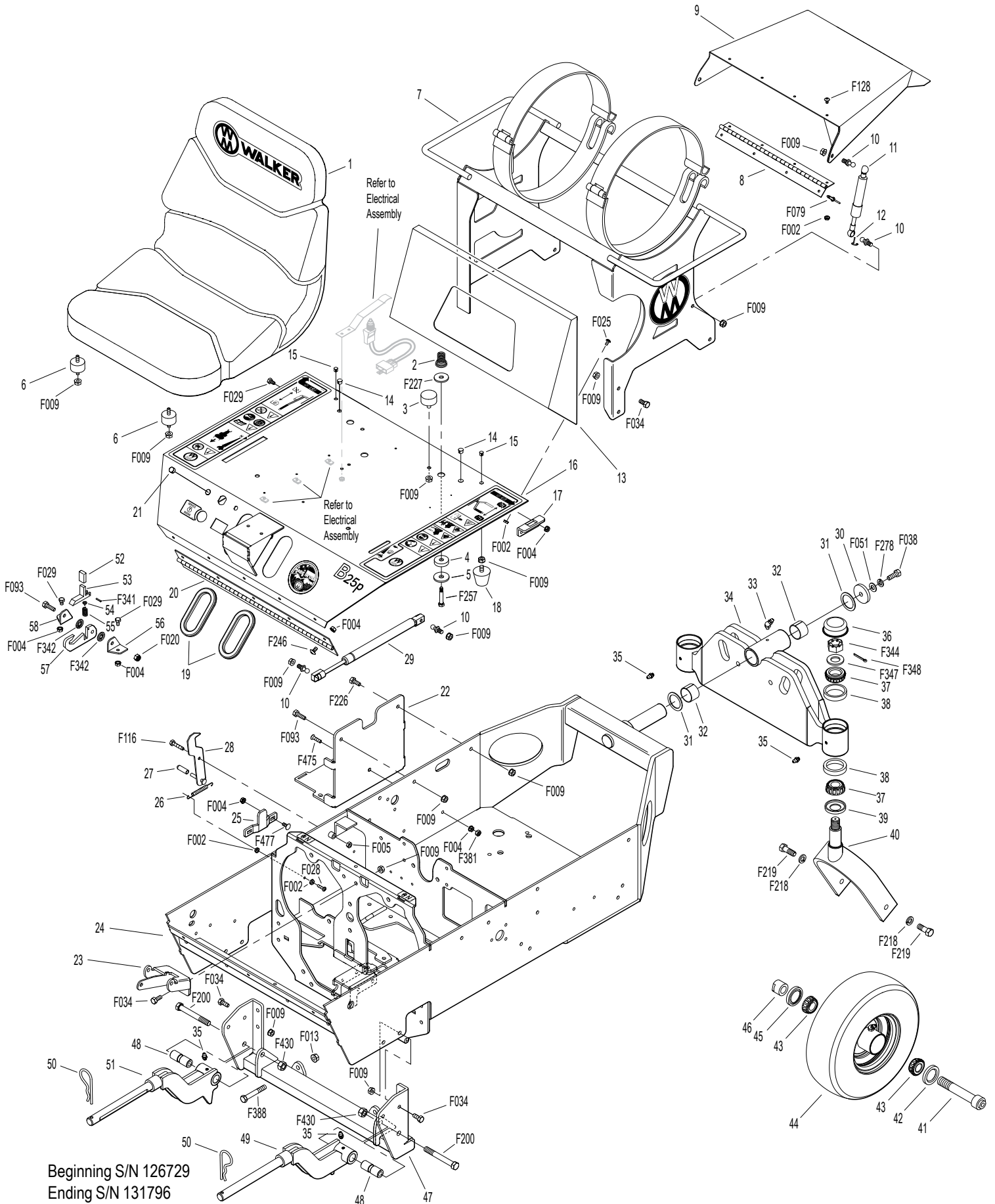
Beginning S/N 126729

Ending S/N 131796

Effective Date 02-07-14

Use only genuine **Walker**® replacement parts.

BODY / CHASSIS ASSEMBLY



Beginning S/N 126729
 Ending S/N 131796
 Effective Date 02-07-14
 Use only genuine Walker® replacement parts.

MAIN COMPONENT POWER TRANSMISSION

ITEM NO.	PART NO.	DESCRIPTION	NO. REQ'D	ITEM NO.	PART NO.	DESCRIPTION	NO. REQ'D
PTO Drive Assembly				Fasteners			
1	4850	Handle Grip, Black	1	F004	1/4-20 Keps Nut		6
2	2358-12	Fiberglide Bushing	1	F005	1/4-20 ESNA Nut		2
3	7201-2	Fiberglide Bearing 1/2"	1	F008	5/16-24 Keps Nut		1
4	4358-13	Clutch Lever (Includes Items # 1 & 5)	1	F009	5/16-18 Whiz Locknut		17
5	5830	Grease Fitting	4	F010	5/16-24 ESNA Nut		1
6	5103-2	Pivot Bushing (5/16 ID)	2	F012	3/8-16 Keps Nut		3
7	2358-8	Adjustor Brace	1	F013	3/8-16 Whiz Locknut		1
8	2358-6	5/16-18 x 1-3/4 Stud	2	F014	3/8-16 ESNA Nut		1
9	5214-13	Ball Joint (3/8)	2	F024	5/16-24 Jam Nut		1
10	4358-12	Clutch Pivot Plate	1	F029	1/4-20 x 1/2 Hex Bolt		1
11	7775-6	Wire Lock Pin (2-1/2")	3	F031	1/4-20 x 5/8 Hex Bolt		11
12	4302	Right Hand Shoe	1	F034	5/16-18 x 3/4 Hex Bolt		7
13	4302-5	Upper Shoe, LH	1	F035	5/16-18 x 1-1/4 Hex Bolt		5
14	4302-1	Left Hand Shoe	1	F040	3/8-16 x 1-1/2 Hex Bolt		1
15	2302-6	Shoe Mount, LH	1	F041	3/8-16 x 1-3/4 Hex Bolt		2
16	4302-2	Shoe Mount	2	F051	3/8 SAE Washer		2
17	4325-12	Idler Mount	1	F058	1/4 Wave Spring Washer		6
18	4236-3	PTO Drive Pulley (5/AA)	1	F060	AN960516 Washer		2
19	4302-6	PTO Shoe	1	F061	1/4 Star Lock Washer		1
20	7775-7	Wire Lock Pin (3")	1	F067	3/16 x 3/16 x 1 Key		1
21	7275-9	Quick Coupler Installation Tool	1	F069	3/32 x 1/2 Cotter Pin		1
22	7275-16	Universal Joint Tube Assembly / Spline	1	F093	5/16-18 x 1 Hex Bolt		1
23	4274-12	PTO Drive Shaft Assembly / Spline	1	F104	1/4-20 x 3/4 PFH Bolt		1
24	4358-7	Clutch / Pivot Stop	1	F120	AN960416 Washer		8
25	7201-3	Fiberglide Bearing	2	F149	1/4 x 1/4 x 1-1/2 Key		1
26	7201-8	Inner Race (4")	1	F153	3/16 x 3/16 x 1-1/4 Key		1
27	4359	Clutch Engagement (Includes Item # 5)	1	F171	5/16-18 x 3/8 Set Screw		2
28	4359-2	Brake Band Link / Rear	1	F178	1/4 x 1 Fender Washer		1
29	4304	Brake Band	1	F183	.312 x .700 x .074 Washer		2
30	4359-1	Brake Band Link / Front	1	F211	1/4-20 x 7/8 Hex Bolt		2
31	7523-2	Clevis Pin W/Hole (1/4 x 5/8)	1	F290	3/8-16 x 5 Hex Bolt		1
32	4411-2	Drive Shaft	1	F298	3/8-24 Jam Nut		2
33	4245-1	Idler Pulley (4/Flat)	2	F325	1/4-20 x 3 Hex Bolt		1
34	4230-1	Engine/PTO Belt / Matched Set	1	F350	1/4-20 LP Nylock		7
35	4236-4	Idler Pulley (4/AA)	1	F381	1/4-20 Hex Nut		1
36	5214-2	Ball Joint (5/16-24) (Nylon Lined)	1	F435	1/4 x 1/4 x 1-1/4 Key		1
37	5226-1	Spring (3/4 x 2-1/2)	1	F449	Washer 1/2 x 1-5/8 x 1/4		1
38	7380	Knuckle Joint	1	F451	1/2-20 Nylon Locknut		1
39	4303-7	Clutch Actuator Bolt (5/16)	1	F484	Washer .380 ID x 1.0 OD x .120		3
40	7377	Plastic Washer (1 x .438 x .025)	2				
41	7378	Pivot Bearing (7/16 x 9/16)	1				
42	4325-1	Clutch Arm	1				
43	5221	Extension Spring (3/4 x 4)	1				
44	2358-11	Clutch Actuator	1				

Beginning S/N 126729

Ending S/N 131796

Effective Date 02-07-14

Use only genuine **Walker®** replacement parts.

ENGINE GROUP

ITEM NO.	PART NO.	DESCRIPTION	NO. REQ'D	ITEM NO.	PART NO.	DESCRIPTION	NO. REQ'D
Fuel Tank Assembly				Throttle Assembly			
1	NS	Buckle	2	27	8123-3	Insultherm (3/8 x 10)	1
2	4010-44	33.5 Gallon Propane Tank	1	28	4108-3	Control Cable (64")	1
3	4010-13	LP Hose	1	29	5975-3	Cable Tie (50# x 7")	2
Remote Oil Cooler Assembly				30	7108	Control Assembly	1
4	NS	Oil Cooler Hose (Kohler 24326127)	2	4108-2	Throttle Control and Cable Assembly (Includes Item # 31)	*	
5	NS	Clamp (Kohler 25 237 02-S)	4	31	5108-5	Throttle Control Knob, Red	1
6	NS	Oil Cooler (Kohler 24 594 12-S)	1	32	5108-1	Control Lever, Throttle	1
7	8016-7	Oil Cooler / Regulator Mount	1	33	5108-8	Control Bracket	1
Precleaner Assembly				34	5108-10	Friction Washer (.125)	1
8	8026-17	Air Intake Hose	1	35	5108-7	Control Lock Tab	1
9	6029	Hose Clamp (1-3/4 to 2-1/4)	2	36	5172	Bearing, Delrin (.255 ID x .379 OD x .250)	1
10	5091-9	Street Elbow 90' (1/8 x 1/8)	1	Fasteners			
11	5091-0	1/8 Pipe Thread Male W/Barb	1	F002	10-24 Keps Nut		7
12	M258	Vacuum Hose (13")	1**	F004	1/4-20 Keps Nut		2
13	2088-9	Air Cleaner Assembly (Includes Items # 13 & 15-17)	1	F005	1/4-20 ESNA Nut		1
14	5091-6	Air Flow Indicator W/Bracket	1	F009	5/16-18 Whiz Locknut		4
15	2088-1	Air Cleaner Band	1	F025	10-24 x 3/8 PPHMS		6
16	5090-3	Safety Filter Insert	1	F031	1/4-20 x 5/8 Hex Bolt		2
17	5090-1	Air Cleaner Cartridge	1	F034	5/16-18 x 3/4 Hex Bolt		2
Engine Assembly				F050	1/4 SAE Washer		2
18	4104-3	Body Support	1	F164	10-24 x 1/4 x 3/8 SHL Bolt		1
19	4845	Rubber Bumper (1.0 x .625)	2	F175	1/2 Split Lock Washer		4
20	NS	Bolt (Kohler)	2	F201	1/4 Belleville Spring Washer		2
21	2013-4	Shield Side	2	F439	1/2-13 x 1-3/4 Hex Bolt		4
22	2013-3	Muffler Heat Shield	1	F482	8-32 Nylock Nut		2
23	NS	Muffler	1	F483	8-32 x 3/4 PPHMS		2
24	NS	Oxygen Sensor (Kohler 25 418 07-S)	1	* Service Part Only			
25	NS	25 HP Engine (Kohler)	1	** Required hose specifications: M258 - 7/64" ID automotive vacuum hose			
26	4010-1	Drain Valve 3/8-18 NPTF	1				

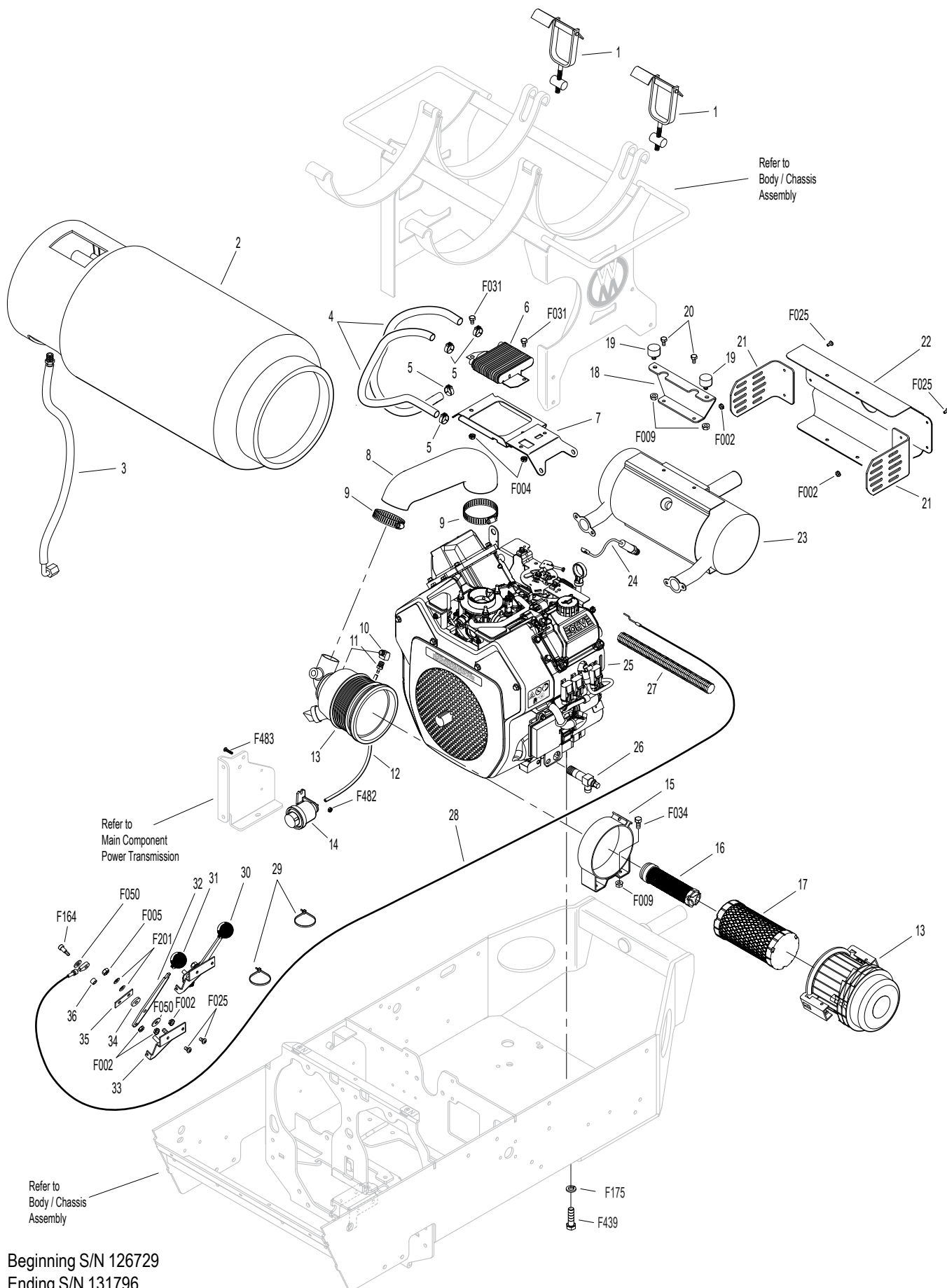
Beginning S/N 126729

Ending S/N 131796

Effective Date 02-07-14

Use only genuine **Walker**® replacement parts.

ENGINE GROUP



Beginning S/N 126729
 Ending S/N 131796
 Effective Date 02-07-14
 Use only genuine **Walker**® replacement parts.

HYDROSTATIC GROUND DRIVE ASSEMBLIES

ITEM NO.	PART NO.	DESCRIPTION	NO. REQ'D	ITEM NO.	PART NO.	DESCRIPTION	NO. REQ'D
Ground Drive Assemblies				45	5222	Extension Spring (1/2 x 3-1/4)	1
1	4025-6	Bottle Mount	1	46	5463-2	Steering Lever Actuator	2
2	2351-3	Flex Coupler Half (Includes Items # F171 & F435)	2	Wheel Assembly			
3	4351-3	Inner Flex Coupler Half / MB (1/4)	2	47	5075-1	LP Wheel & Tire Assembly (18 x 8.50-10)	2
4	2351-1	Rubber Iso Coupler	6		5075-2	LP Tire (18 x 8.50-10)	*
5	4349-11	Flanged Bearing (1") (Reversed Bearing)	1		5075-5	LP Wheel (10 x 7)	*
6	4349-10	Flanged Bearing (3/4")	1		5033-6	Wheel & Tire (18 x 7.00-8)	**
7	4010-15	Flex Coupling Guard	1		5030-6	Standard Tire (18 x 7.00-8)	*
8	4025-10	Hose Channel	1		5031-2	Standard Wheel (8 x 5.00-5)	*
9	5975-3	Cable Tie (50# x 7")	4		5030-4	Tire Tube (18 x 8.50-8)	*
10	4240-1	Drive Pulley (Includes Items # F067 & F171)	1	Fasteners			
11	4026-9	Pulley (52364)	2		F004	1/4-20 Keps Nut	13
12	4245	Idler Pulley (3/A)	1		F009	5/16-18 Whiz Locknut	8
13	4230-2	Ground Drive Belt	1		F012	3/8-16 Keps Nut	2
14	5841	Retainer Washer (3/8 x 1-1/4)	1		F013	3/8-16 Whiz Locknut	6
15	7201-3	Fiberglide Bearing	2		F015	1/2-20 Wheel Lug Nut	8
16	7201-5	Inner Race (2-1/4)	1		F020	5/16-18 ESNA Nut	5
17	4325-13	Idler Arm (Includes Items # 15 & 19)	1		F029	1/4-20 x 1/2 Hex Bolt	8
18	7364-2	Torsion Spring	1		F031	1/4-20 x 5/8 Hex Bolt	5
19	5830-3	Grease Fitting (45 Deg.)	2		F034	5/16-18 x 3/4 Hex Bolt	16
20	4407-4	Bow Tie Cotter Pin	4		F035	5/16-18 x 1-1/4 Hex Bolt	3
21	9430-1	Spacer Tube	4		F038	3/8-16 x 1 Hex Bolt	4
22	4025-11	Hydro-Gear ZT3100, LH	1		F040	3/8-16 x 1-1/2 Hex Bolt	1
23	4026-11	Hydro-Gear ZT3100, RH	1		F042	3/8-16 x 2-1/4 Hex Bolt	2
24	2028-5	Lockout Arm, LH	1		F043	3/8-16 x 3 Hex Bolt	1
25	2028-6	Lockout Arm, RH	1		F050	1/4 SAE Washer	2
26	2025-17	Straight Thread Hose Fitting	2		F051	3/8 SAE Washer	1
27	5879-4	Hose Clamp (7/16)	2		F052	5/16 Ext. Star Lock Washer	12
28	8015	Hose (1/4 x 14-1/2)	2		F069	3/32 x 1/2 Cotter Pin	1
29	5879-3	Hose Clamp (1/2)	2		F171	5/16-18 x 3/8 Set Screw	6
30	4025-3	Elbow (1/4 x 1/2)	2		F182	1/4 x 5/8 x 1/8 Washer	4
31	5879-8	Hose Clamp (13/16)	4		F183	.312 x .700 x .074 Washer	20
32	5087-1	Hose (1/2 x 1-3/4)	2		F336	3/8-16 Jam Nut	1
33	2025-1	Oil Expansion Reservoir (71327)	1		F350	1/4-20 LP Nylock	2
Parking Brake Assembly					F369	5/16-18 x 4-1/2 Hex Bolt	2
34	4406	Parking Brake Lever (Includes Items # 19 & 35)	1		F434	5/16-18 x 3-1/2 Hex Bolt	4
35	7406-1	Handle Grip, Red	1		F435	1/4 x 1/4 x 1-1/4 Key	2
36	8655-4	Clevis Pin (5/16 x 3/4)	2		F481	Washer 5/16 x 7/8 x .125	3
37	4406-12	Brake Actuator Pull	1	* Service Part Only			
38	2280	Clevis (3/8)	1	** May be ordered as a factory-installed option or for dealer installation. Narrow Drive Tires are used when installing a 36" Deck. Contact your Walker dealer.			
39	2406-4	Clevis Pin (5/16 x 1-1/8)	1				
40	4401-6	Parking Brake Mount	1				
41	4401-7	Parking Brake Pivot	1				
42	4407-3	Parking Brake Actuator	1				
43	5665-1	Compression Spring (2-1/2)	2				
44	4407	Parking Brake Link	1				

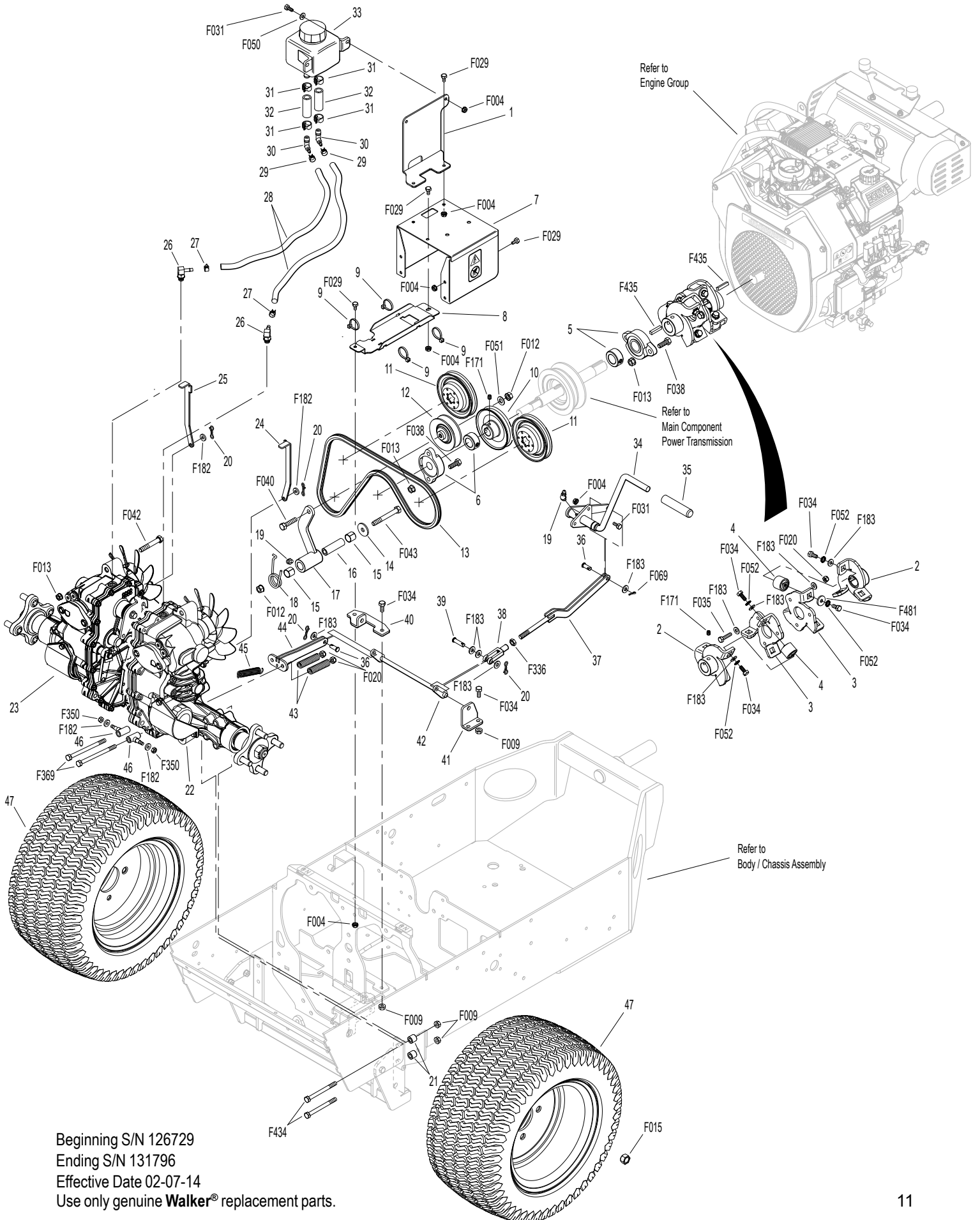
Beginning S/N 126729

Ending S/N 131796

Effective Date 02-07-14

Use only genuine **Walker**® replacement parts.

HYDROSTATIC GROUND DRIVE ASSEMBLIES



Beginning S/N 126729
 Ending S/N 131796
 Effective Date 02-07-14
 Use only genuine **Walker®** replacement parts.

STEERING CONTROL ASSEMBLIES

ITEM NO.	PART NO.	DESCRIPTION	NO. REQ'D	ITEM NO.	PART NO.	DESCRIPTION	NO. REQ'D
Steering Lever & FSC Assemblies				Fasteners			
1	5862	FSC Knob	1	F004	1/4-20 Keps Nut		2
2	4170	FSC Lever Assembly (Includes Item # 4)	*	F005	1/4-20 ESNA Nut		2
3	2170-1	Step Washer	1	F008	5/16-24 Keps Nut		2
4	5830	Grease Fitting	1	F009	5/16-18 Whiz Locknut		6
5	5214-5	Ball Joint (5/16-24/LH) W/O Stud	1	F010	5/16-24 ESNA Nut		2
6	4173	Control Rod (5-3/8)	1	F024	5/16-24 Jam Nut		3
7	5214-4	Ball Joint (5/16-24) W/O Stud	1	F029	1/4-20 x 1/2 Hex Bolt		2
8	4219	Extension Spring (3/4 x 6-1/2)	1	F035	5/16-18 x 1-1/4 Hex Bolt		1
9	4451-9	FSC Friction Actuator	1	F044	5/16-24 x 3/4 Hex Bolt		2
10	2463	Actuator Washer	2	F059	3/8 Wave Spring Washer		1
11	7201-2	Fiberglide Bearing (1/2")	2	F093	5/16-18 x 1 Hex Bolt		2
12	4199-2	Steering Lever Dampener Assembly	2	F146	1/4-20 Jam Nut		2
13	5146	10mm Ball Stud	4	F167	5/16-18 Hex Nut		1
14	5830-5	Grease Fitting (45 Degree) M6 x 1	1	F183	.312 x .700 x .074 Washer		6
15	5665-1	Compression Spring (2-1/2)	2	F188	1/4-20 Self-Locking Nut		4
16	4213-2	Control Rod (6-1/2)	2	F192	3/8-24 Self-Locking Nut		1
17	5214-2	Ball Joint (5/16-24) (Nylon Lined)	2	F198	.250 x .625 x .040 Washer, SS		2
18	2212-3	Seal Retainer	2	F211	1/4-20 x 7/8 Hex Bolt		1
19	2212	Transmission Control Arm Stop	2	F312	3/8 x 3/8 Shoulder Bolt		1
20	2212-2	Transmission Control Arm, RH	1	F345	1/4-20 x .770 Knurled Bolt		4
21	2212-1	Transmission Control Arm, LH	1	F373	5/16-24 Hex Nut, LH		1
22	5830-3	Grease Fitting (45 Degree)	1	F385	1/4 x 1-1/4 Roll Pin		1
23	4451-1	Steering Pivot Shaft W/Stop	1	F386	5/16-18 x 1-1/2 x 3/8 Shoulder Bolt		1
24	9704-3	Pivot Rod Bushing / Plastic	2	F391	1/4-20 x 1/2 Set Screw, SS		2
25	4142-2	FSC Friction Washer (1-1/2 x 1-1/32 x 1/16)	1	F407	Belleville Washer 3/8 x 1.187, SS		1
26	5141	FSC Friction Washer (1-1/2 x 3/8 x 1/16)	1	F427	5/16-18 Flange Nut		1
27	4142-1	FSC Cam	1				
28	8201-3	Fiberglide Bearing	4				
29	4452-6	Steering Pivot (1/4-20 x 1-5/8)	2				
30	4451-15	Speed Control Actuator, LH (Includes Items # 22 & 28)	1				
31	5463-2	Steering Lever Actuator	2				
32	5222	Extension Spring (1/2 x 3-1/4)	2				
33	5450	D-Clip	2				
34	4452-4	Steering Lever Tube W/Tab	2				
35	5453-10	Steering Lever Handle / Adjustable (Includes Items # 36 & F345)	2				
36	5850-2	Handle Grip, Foam (5-1/2)	2				
37	4451-14	Speed Control Actuator, RH (Includes Items # 14 & 28)	1				

* Service Part Only

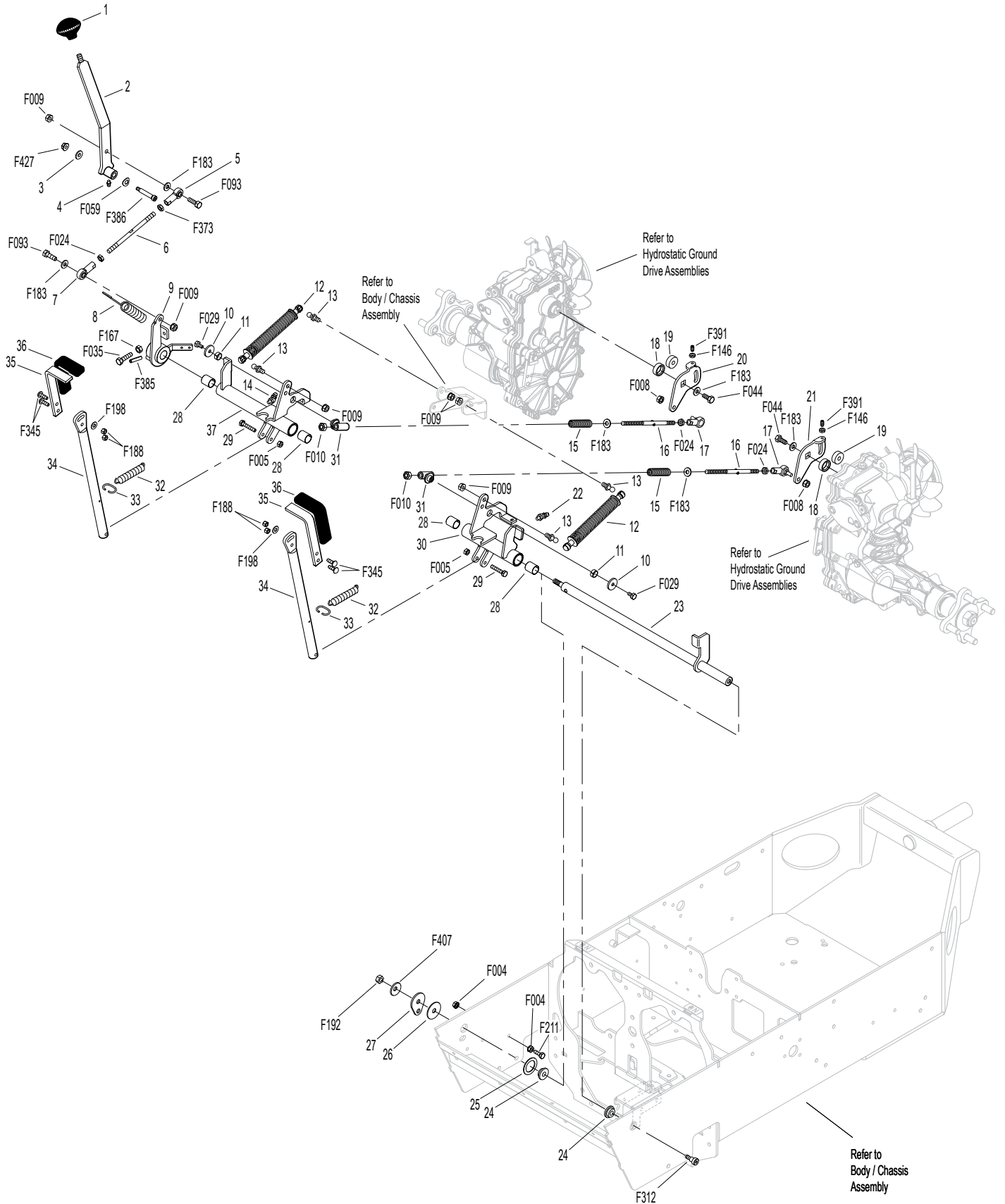
Beginning S/N 126729

Ending S/N 131796

Effective Date 02-07-14

Use only genuine **Walker**® replacement parts.

STEERING CONTROL ASSEMBLIES



Beginning S/N 126729
 Ending S/N 131796
 Effective Date 02-07-14
 Use only genuine **Walker®** replacement parts.

ELECTRICAL ASSEMBLY

ITEM NO.	PART NO.	DESCRIPTION	NO. REQ'D	ITEM NO.	PART NO.	DESCRIPTION	NO. REQ'D
Electrical Assembly				Fasteners			
1	2505	Leaf Spring	1	F002		10-24 Keps Nut	6
2	5942-11	Delta Hex Nut	1	F003		1/4-28 Hex Nut	1
3	5942-9	Safety Switch (NO), Delta Threaded	1	F004		1/4-20 Keps Nut	6
4	7834-3	Wire Saddle (3 Wires)	3	F019		1/4-20 ESNA Wing Nut	2
5	7941-3	Boot, Circuit Breaker	1	F025		10-24 x 3/8 PPHMS	2
6	7941-7	Circuit Breaker (20 Amp)	1	F026		10-24 x 1/2 PPHMS	3
7	8990-1	Hourmeter (Global)	1	F028		10-24 x 3/4 PPHMS	1
8	2703-5	Knob, 10-24 x 1/2	2	F029		1/4-20 x 1/2 Hex Bolt	3
9	4910-5	Cover Plate	1	F031		1/4-20 x 5/8 Hex Bolt	2
10	5975-1	Cable Tie (18# x 3-3/4")	2	F032		1/4-20 x 3/4 Hex Bolt	1
11	5932	Battery Terminal Insulation Black (-)	1	F050		1/4 SAE Washer	4
12	5933	Battery Terminal Insulation Red (+)	1	F112		5/8 x 1-1/4 x .03 Washer	3
13	4940-6	Battery Cable 33"	1	F349		Washer .835 ID 1.122 OD, SS	1
14	6923-4	Battery Cable 13-1/2" (-)	1	F381		1/4-20 Hex Nut	1
15	6942	Relay Switch (30/40 Amp) NC (Includes Items # 17 & 18)	3	F475		1/4-20 x 1 PFH Screw	1
16	5835	Cable Clamp (3/4)	1	F505		6-32 x 7/8 Hex Trim MS, SS	4
17	6941-6	Relay Switch (30/40 Amp)	*	F506		6-32 Nylock Nut	4
18	6941-7	Relay Mount	*	* Service Part Only			
19	4024-12	Switch Mount	1				
20	5942-8	Safety Switch (NO), Delta Side Mount	1				
21	4940-9	Wire Harness	1				
22	5942-10	Safety Switch (NC), Delta Side Mount	1				
23	NS	Battery (12V/300 CA/Wet/SP35)	1				
24	5839	Hook Bolt	2				
25	4910-4	Battery Cover	1				
26	8996-10	Amber Indicator Light Assembly (Includes Items # 27 & 28)	1				
27	8996-3	Indicator Bulb (Replacement for P/N 8996-2)	*				
28	8996-6	Amber Indicator Lens	1				
29	8960-15	Ignition Switch W/Keys (Includes Items # 30, 31 & F349)	1				
30	7854	Plastic Tip, Red	1				
31	8960-3	Key Set W/Umbrella	1				
32	8536	Warning Horn	1				

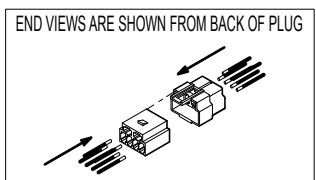
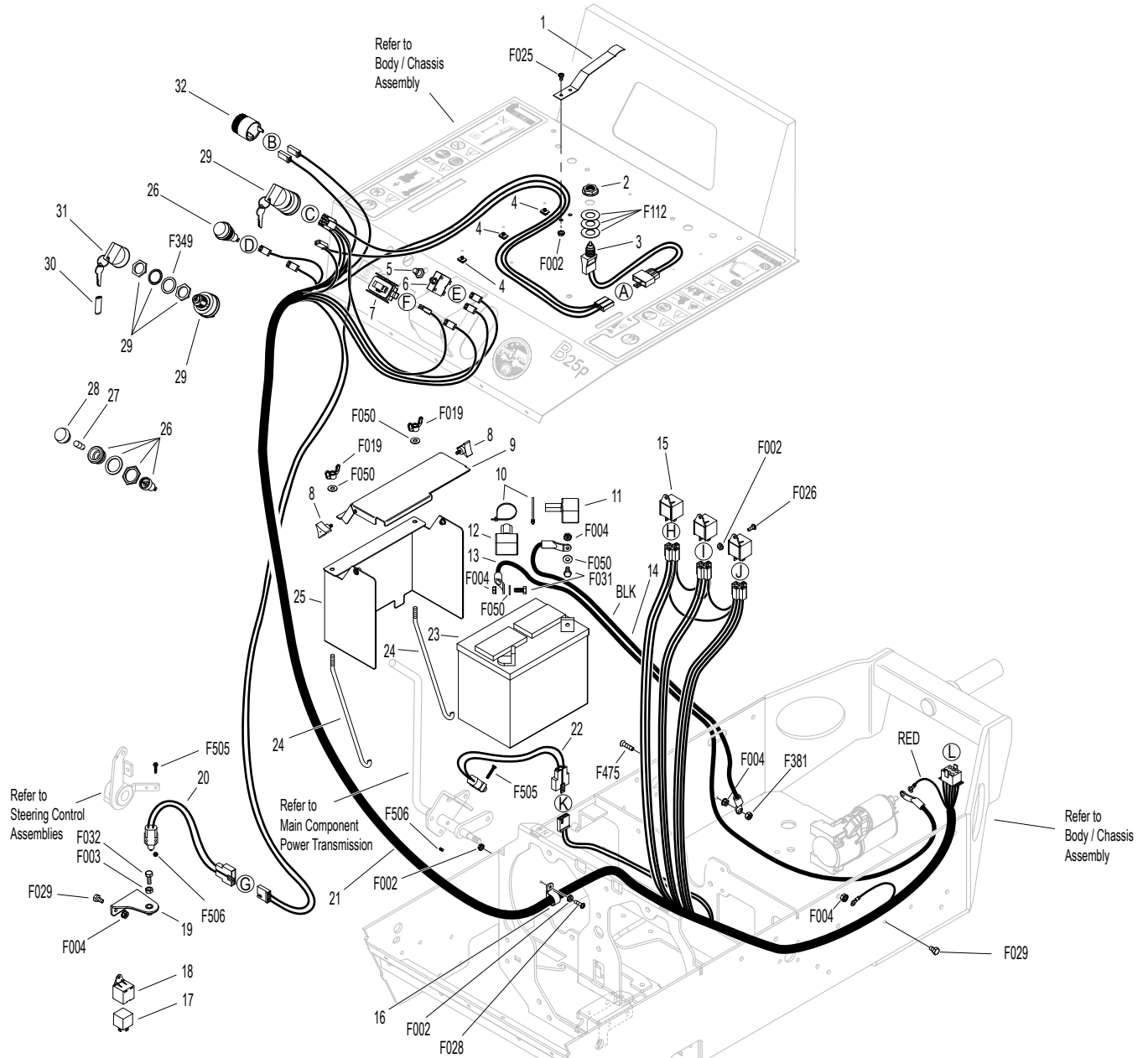
Beginning S/N 126729

Ending S/N 131796

Effective Date 02-07-14

Use only genuine **Walker**[®] replacement parts.

ELECTRICAL ASSEMBLY



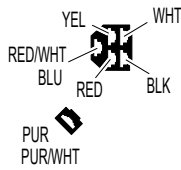
DETAIL A



DETAIL B



DETAIL C



DETAIL D



DETAIL E



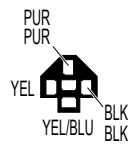
DETAIL F



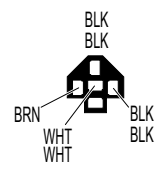
DETAIL G



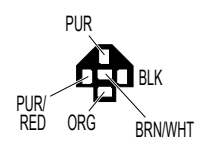
DETAIL H



DETAIL I



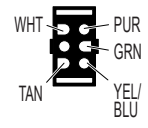
DETAIL J



DETAIL K



DETAIL L

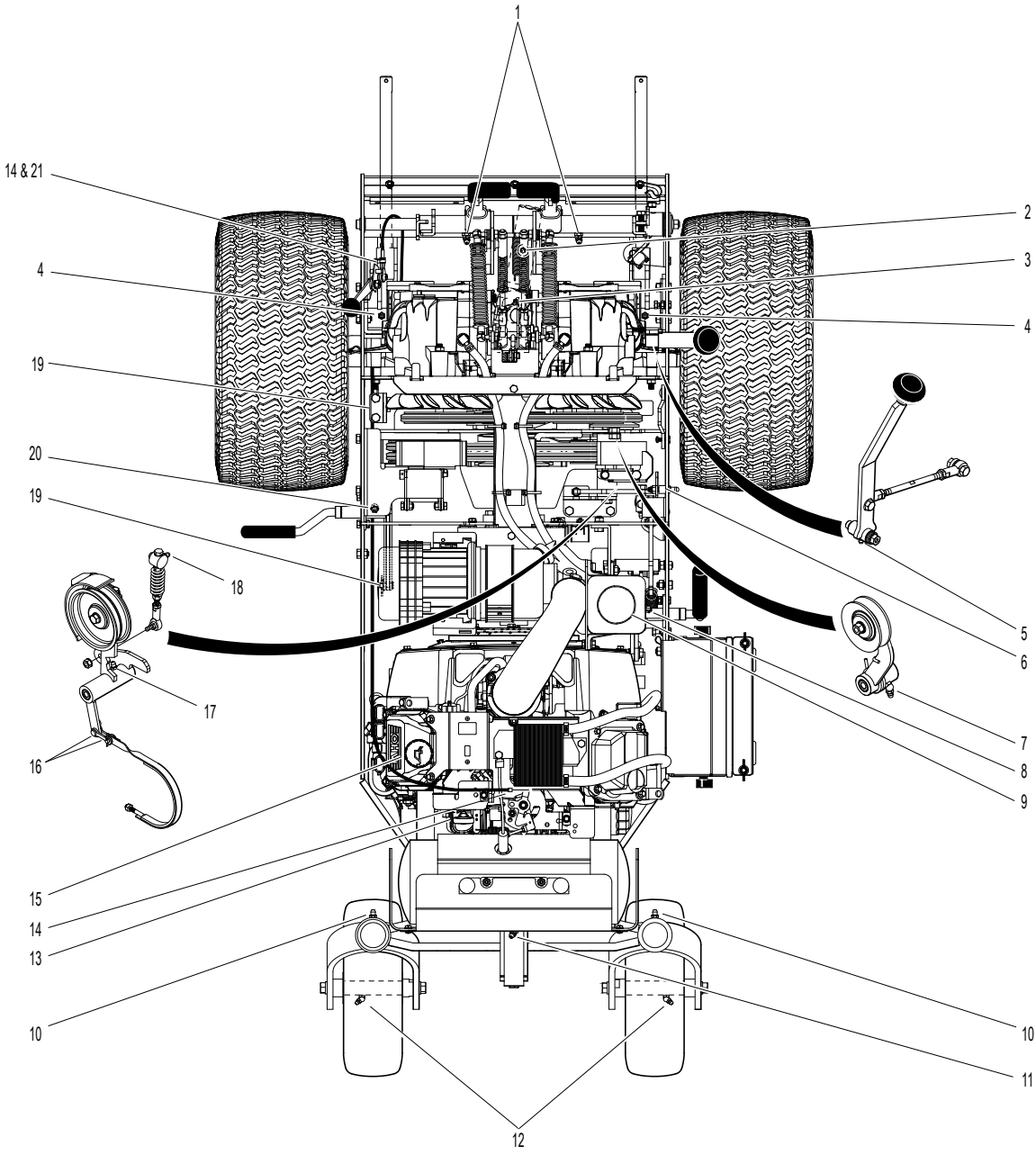


Beginning S/N 126729
 Ending S/N 131796
 Effective Date 02-07-14
 Use only genuine **Walker**® replacement parts.

LUBRICATION POINTS

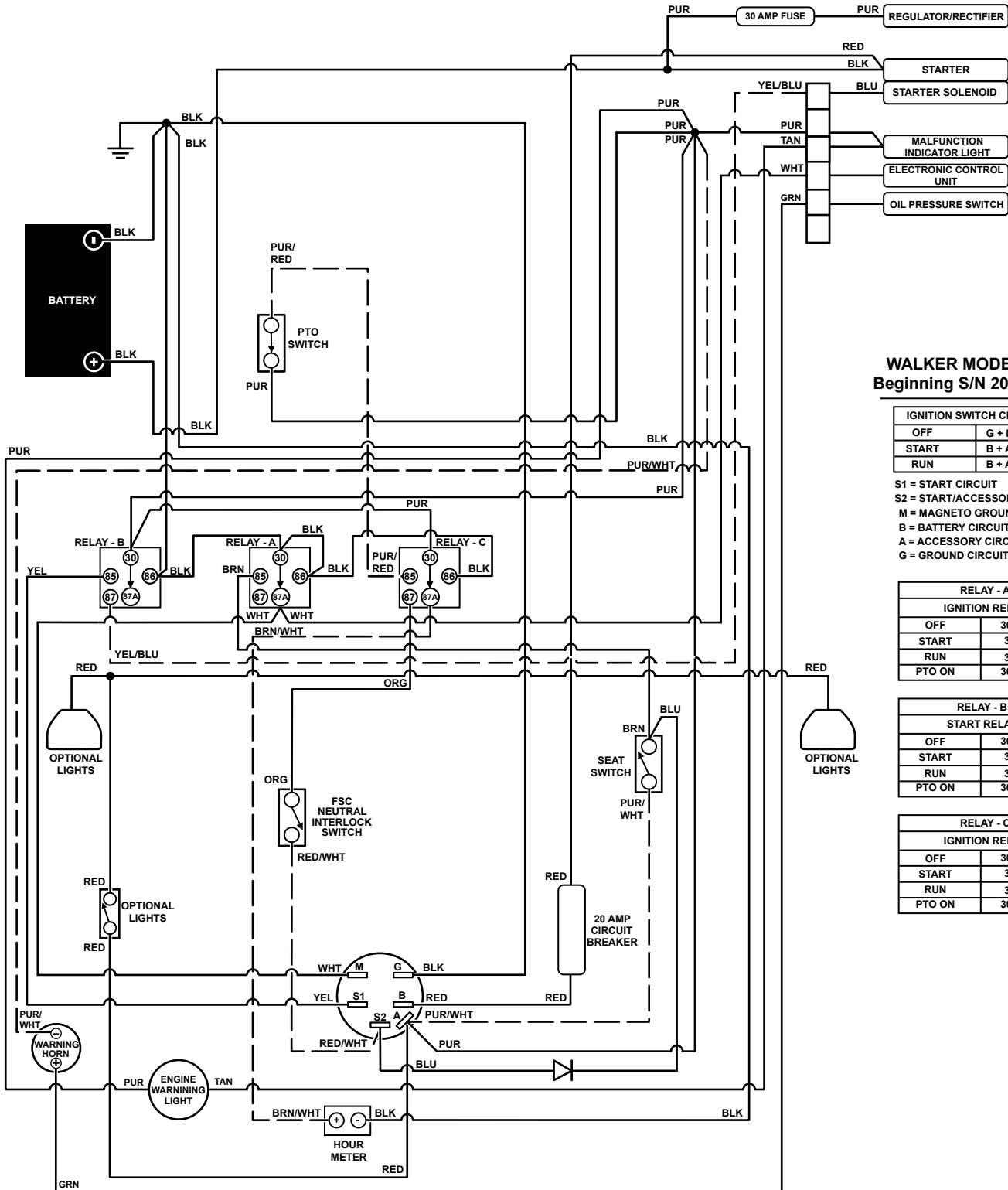
ITEM NO.	LOCATION	LUBRICATION TYPE	NO. PLACES	ITEM NO.	LOCATION	LUBRICATION TYPE	NO. PLACES
Lubrication Points							
1	Steering Lever Pivot	Grease	2	14	Throttle Control Cable Ends	Oil	2
2	Deck-to-PTO Coupling (Grease Spline Slide Area)	Grease	1	15	Engine Oil Filler	Oil**	1
3	Universal Joint Tube Assembly	Grease*	1	16	Brake Band Pivot Pins	Oil	2
4	Deck Support Arm Pivot	Grease	2	17	Clutch Actuator Push Rod	Grease	1
5	FSC Lever Pivot	Grease	1	18	PTO Belt Tightener Pivot	Grease	1
6	Body Latch Pivot	Oil	1	19	Parking Brake Clevis	Oil	2
7	Hydro Idler Pivot	Grease	1	20	Parking Brake Lever	Grease	1
8	PTO Clutch Lever Pivot	Grease	1	21	Throttle Control Pivot	Oil	1
9	Transaxle Oil Reservoir	Oil/20W-50	1	* Grease every eight (8) hours.			
10	Tail Wheel Caster Fork Pivot	Grease	2	** Refer to B25p Operator's Manual for procedure for checking and changing oil in Engine Crankcase.			
11	Rear Axle Pivot	Grease	1	NOTE: See Model B25p Operator's Manual (P/N 4000-9) for proper lubrication intervals.			
12	Rear Wheel Bearing	Grease	2				
13	Engine Dipstick	Oil**	1				

LUBRICATION POINTS



Beginning S/N 126729
Ending S/N 131796
Effective Date 02-07-14
Use only genuine **Walker**® replacement parts.

WIRING SCHEMATIC



WALKER MODEL B25p Beginning S/N 2014-126729

IGNITION SWITCH CIRCUITS	
OFF	G + M
START	B + A / S1 + S2
RUN	B + A

S1 = START CIRCUIT
 S2 = START/ACCESSORY CIRCUIT
 M = MAGNETO GROUND CIRCUIT
 B = BATTERY CIRCUIT
 A = ACCESSORY CIRCUIT
 G = GROUND CIRCUIT

RELAY - A IGNITION RELAY	
OFF	30 + 87A
START	30 + 87
RUN	30 + 87
PTO ON	30 + 87A

RELAY - B START RELAY	
OFF	30 + 87A
START	30 + 87
RUN	30 + 87
PTO ON	30 + 87A

RELAY - C IGNITION RELAY	
OFF	30 + 87A
START	30 + 87
RUN	30 + 87
PTO ON	30 + 87A

Beginning S/N 126729
 Ending S/N 131796
 Effective Date 02-07-14
 Use only genuine **Walker**® replacement parts.

OPERATOR'S NOTES

Beginning S/N 126729
Ending S/N 131796
Effective Date 02-07-14

Use only genuine **Walker**[®] replacement parts.

LIMITED WARRANTY FOR WALKER MODEL B25p RIDER MOWERS

1. WHAT THIS WARRANTY COVERS, AND FOR HOW LONG:

Walker Manufacturing company will, at its option, repair or replace, without charge, any part covered by this warranty which is found to be defective in material and/or workmanship within one (1) year* after date of sale to the original retail purchaser unless the product is used for rental purposes, in which case this warranty is limited to ninety (90) days. At Walker's request, customer will make the defective part available for inspection by Walker and/or return the defective part to Walker, transportation charges prepaid. All parts and components of the Walker Mower are covered by this warranty **except** the following components which are warranted separately by their respective manufacturers:

Kohler Engine
Hydro-Gear Transaxles
Battery
Tires

The available warranties covering these items are furnished with each mower. Walker does not assume any warranty obligation, liability or modification for these items, which are covered exclusively by the stated warranty of the respective manufacturers noted above.

* A two (2) year or 2000 hour (whichever comes first) warranty is offered for Hydro-Gear ZT3100 hydrostatic transmissions; covers full cost of replacement up to 1000 hours of use, and after 1000 hours warranty coverage is prorated against 2000 hours.

2. WHAT THIS WARRANTY DOES NOT COVER:

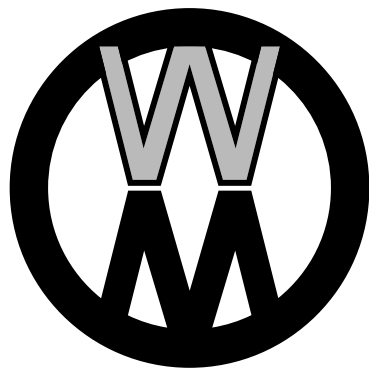
- A. This warranty does not cover defects caused by depreciation or damage caused by normal wear, accidents, improper maintenance, improper use or abuse of the product, alterations, or failure to follow the instructions contained in the Operator's Manual for operation and maintenance.
- B. The customer shall pay any charges for making service calls and/or for transporting the mower to and from the place where the inspection and/or warranty work is performed.

3. HOW TO OBTAIN SERVICE UNDER THIS WARRANTY:

Warranty service can be arranged by contacting the dealer where you purchased the mower or by contacting Walker Manufacturing Company, 5925 East Harmony Road, Ft. Collins, CO 80528. Proof of the date of purchase may be required to verify warranty coverage.

4. WARRANTY LIMITATION:

- A. **THERE IS NO OTHER EXPRESS WARRANTY. ANY WARRANTY THAT MAY BE IMPLIED FROM THIS PURCHASE INCLUDING MERCHANTABILITY AND FITNESS FOR A PARTICULAR PURPOSE IS HEREBY LIMITED TO THE DURATION OF THIS WARRANTY AND TO THE EXTENT PERMITTED BY LAW ANY AND ALL IMPLIED WARRANTIES ARE EXCLUDED.** Some states do not allow limitations on how long an implied warranty lasts, so the above limitations may not apply to you.
- B. **WALKER WILL NOT BE LIABLE FOR ANY INCIDENTAL, CONSEQUENTIAL, OR SPECIAL DAMAGES AND/OR EXPENSES IN CONNECTION WITH THE PURCHASE OR USE OF THE MOWER.** Some states do not allow the exclusion or limitation of incidental or consequential damages, so the above limitation(s) or exclusion(s) may not apply to you.
- C. Only the warranty expressed in this limited warranty shall apply and no dealer, distributor, or individual is authorized to amend, modify, or extend this warranty in any way. Accordingly, additional statements such as dealer advertising or presentations, whether oral or written, do not constitute warranties by Walker, and should not be relied upon.
- D. This warranty gives you specific legal rights, and you may also have other rights which vary from state to state.



WALKER

WALKER MFG. CO. • 5925 E. HARMONY ROAD, FORT COLLINS, CO 80528 • (970) 221-5614
FORM NO. 091815 PRINTED IN USA www.walkermowers.com ©2015 WALKER MFG. CO