

# NINJA<sup>®</sup>

## COFFEE

### BREWER

**CE200**  
**Series**

OWNER'S GUIDE



# IMPORTANT SAFEGUARDS

## HOUSEHOLD USE ONLY

### READ ALL INSTRUCTIONS BEFORE USING YOUR NINJA® COFFEE BREWER.

#### **⚠️ WARNING:**

To reduce the risk of fire, electric shock, serious injury, death, or damage when using this appliance, follow these basic safety precautions.

#### General Precautions

- 1 DO NOT** allow young children to operate the appliance or use as a toy. Close supervision is necessary when any appliance is used near children.
- This appliance has a polarized plug (one blade is wider than the other). To reduce the risk of electric shock, this plug is intended to fit into a polarized outlet only one way. If the plug does not fit fully into the outlet, reverse the plug. If it still does not fit, contact a qualified electrician. **DO NOT** attempt to modify the plug in any way.
- To protect against fire, electric shock, and injury to persons, **DO NOT** immerse cord, plugs, or body of machine in water or other liquid.
- NEVER** carry the appliance by the power cord or yank it to disconnect from electrical outlet; instead grasp the plug and pull to disconnect.
- DO NOT** let the power cord hang over the edges of tables or counters or touch hot surfaces such as the stovetop.

**THIS BOOK COVERS MODEL NUMBERS:**  
CE200, CE201

#### TECHNICAL SPECIFICATIONS

Voltage: 120V, 60Hz  
Power: 1100 Watts  
Water Reservoir  
Capacity: 60 Fluid Ounces

- The use of a vessel other than the provided 12-cup carafe may create an overflow condition and scalding hazard, or result in fire, electric shock, or personal injury.
- DO NOT** place carafe in microwave.
- The carafe is designed for use with this appliance **ONLY. NEVER** use on a stovetop.
- A short power-supply cord is provided to reduce the risks resulting from becoming entangled in or tripping over a longer cord.
- DO NOT** use extension cords with this product.
- Appliance creates hot liquid. Handle with care.
- To disconnect, turn any control to "off," then remove plug from wall outlet.

#### Operating Notice

- DO NOT** use this appliance for anything other than its intended use. **DO NOT** use outdoors.
- Clogging and backing up of water and/or coffee in the brewer can occur under any of the following conditions: the use of coffee that is too finely ground or decaffeinated, using two or more paper filters, using the permanent filter in conjunction with a paper filter, not cleaning coffee grounds from the permanent filter, or allowing coffee grounds to spill over the filter.
- ALWAYS** use appliance on a clean, dry, level surface.
- DO NOT** place on or near a hot gas or electric burner or in a heated oven.

- DO NOT** touch hot surfaces. Use handles or knobs.
- DO NOT** touch warming plate while the brewer is in use. Wait until it has completely cooled after use before touching.
- DO NOT** run the appliance without water.
- DO NOT** use well water; use filtered tap water.
- To prevent overflow, **DO NOT** add water to the reservoir if the STAY WARM button is on.
- ALWAYS** place the 12-cup carafe with the lid on beneath the brew basket to receive the brewed coffee.
- DO NOT** reach across top of unit when brewing. Steam released from vent on top of brewer may cause burns.
- DO NOT** set a hot carafe on a wet or cold surface.
- DO NOT** use a cracked or scratched carafe or a carafe with a loose or weakened handle.
- DO NOT** drink directly from the carafe. Liquid from the carafe may be very hot.
- If carafe is removed during brewing cycle, return it to unit as soon as possible to prevent spills.
- NEVER** open the brew basket while the unit is in use.
- DO NOT** remove the carafe at any time throughout the clean cycle.
- Ensure the carafe is completely empty before starting a cleaning or brewing cycle. Starting a cycle with water or coffee in the carafe will cause it to overflow.
- DO NOT** brew without the carafe in place.
- Scalding may occur if the lid is removed during the brewing cycles.

#### Care & Maintenance

- Unplug from outlet when not in use and before cleaning. Allow unit to cool before removing brew basket, water reservoir, or filters.
- Clean the glass carafe with a soft brush or sponge. **DO NOT** clean carafe with abrasive cleansers, steel wool pads, or other abrasive material.
- To prevent illness from bacterial growth in the appliance, follow all cleaning instructions in the Care & Maintenance section of this Owner's Guide.
- Clean the system on a weekly basis by wiping down the machine exterior.
- DO NOT** operate any appliance with a damaged cord or plug or after the appliance malfunctions, or has been damaged in any manner. Return appliance to the nearest authorized service facility for examination, repair or adjustment.
- Scalding may occur if the lid is removed during the brewing cycles.
- The use of accessory attachments not recommended by the appliance manufacturer may result in fire, electric shock or injury to persons.

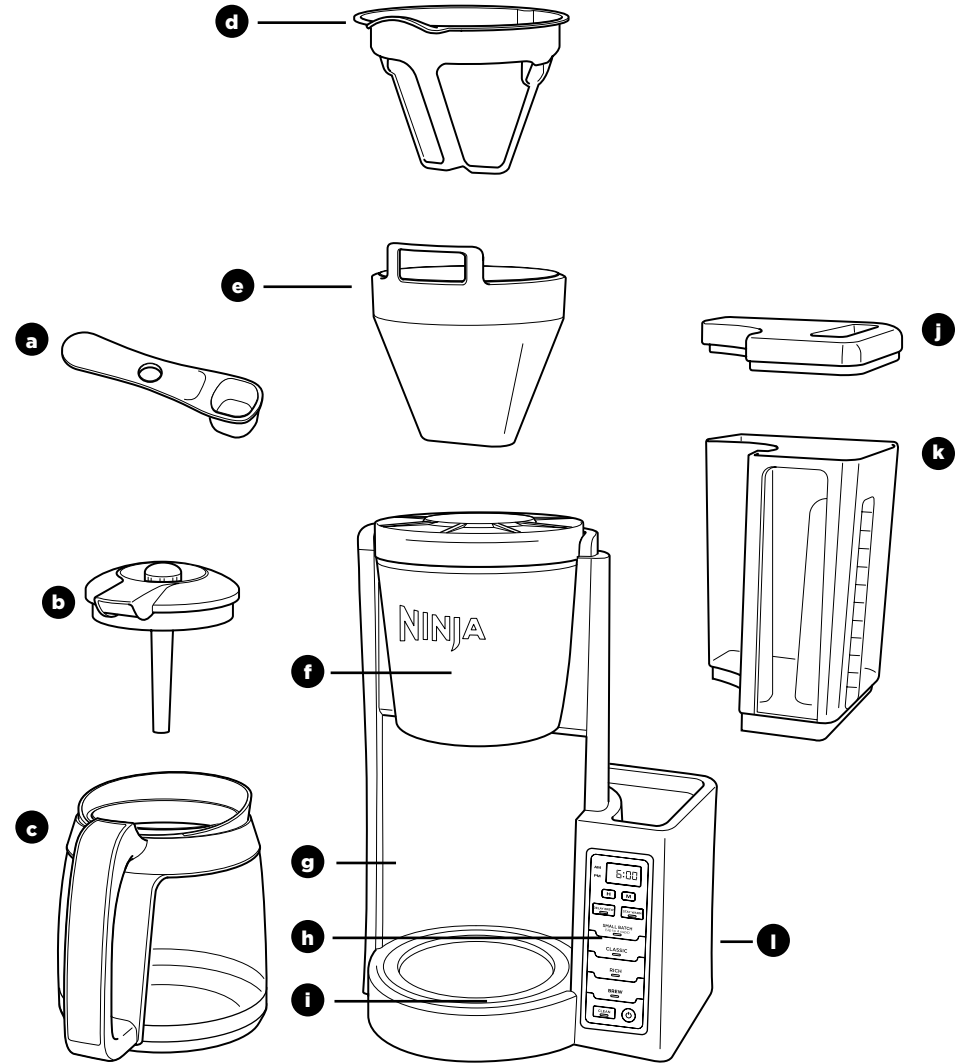
## SAVE THESE INSTRUCTIONS

# CONTENTS

Thank you for purchasing the Ninja® Coffee Brewer.

- What's in the box** ..... 4
- Getting to know your Ninja Coffee Brewer** .....5
  - Control Panel.....5
  - Features of the Ninja Coffee Brewer .....5
- Before First Use** ..... 6
  - Setting the Clock .....6
- How to Brew**.....7
- Preparing & Using Your Ninja Coffee Brewer**.....8
  - Coffee Measurement Chart .....8
  - Programming the Delay Brew Time .....9
  - Warming Plate .....9
- Care & Maintenance** .....10
  - Cleaning After a Brew.....10
  - Descaling Your Ninja Coffee Brewer.....10
- Troubleshooting Guide**.....11
  - Ordering Replacement Parts.....12
- Warranty & Registration**.....14

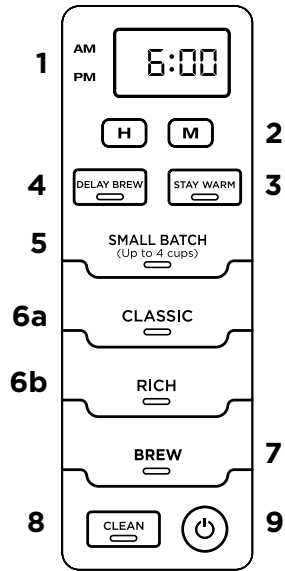
# WHAT'S IN THE BOX



- a** Integrated Ninja® Scoop
- b** Brew-Through lid with Flavor Straw
- c** Glass Carafe
- d** Permanent Filter  
(included with some models)
- e** Removable Filter Holder
- f** Brew Basket

- g** Brewer
- h** Control Panel
- i** Warming Plate
- j** Water Reservoir Lid
- k** Removable Water Reservoir
- l** Power Cord & Storage (not shown)

## CONTROL PANEL



- 1 Programmable Digital Clock
- 2 Clock Hour and Minute Buttons
- 3 STAY WARM Button
- 4 DELAY BREW Button
- 5 SMALL BATCH Button
- 6 Brew Types
  - a CLASSIC Brew Button
  - b RICH Brew Button
- 7 BREW Button
- 8 Clean Cycle Button
- 9 Power Button

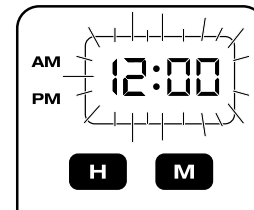
## FEATURES OF THE NINJA COFFEE BREWER

- **Thermal Flavor Extraction® Technology** - Blends automated controls for calibrated temperature, pre-infusion, coffee saturation, and flavor richness to unlock the full flavor potential of your coffee.
- **SMALL BATCH** - When brewing 4 cups or less, add your desired amount of water to the reservoir and press this button to ensure the same great flavor as a Full Carafe brew.
- **Brew Types** - Control the strength and style of your coffee:
  - a. CLASSIC Brew for smooth, balanced hot coffee.
  - b. RICH Brew for a richer-than-Classic but still smooth coffee flavor that stands up to milk, cream, or flavoring.
- **Removable Water Reservoir with Easy Access** - For quick and easy filling.
- **LED Control Panel with Programmable Digital Clock**
- **24-Hour Programmable DELAY BREW Button** - Set it to automatically brew at a desired time. The brewer will remain pre-heated and ready to brew at the time you programmed.
- **Mid-Brew Pause** - Automatically stops the flow of coffee from the brew basket, allowing you to pour a cup mid-brew.
- **CLEAN Function** - The clean function allows you to clean your unit whenever you would like. As a guideline, we suggest running a clean cycle when it takes longer than 12-15 minutes to brew a full carafe of coffee.
- **STAY WARM Button with Automatic Shutoff** - Keeps your brew at the ideal temperature for up to 4 hours. The warming plate will activate during the brew and will automatically shut off after 2 hours by default. You can also program the warming plate to stay on for more or less time.
- **Paper Filter Kit or Gold-Tone Permanent Filter** - Your unit comes with either a paper filter kit or a gold-tone permanent filter. Use either a #4 paper filter or the permanent filter (not both) to brew.

## BEFORE FIRST USE

- 1 Remove all packaging material from the brewer.
- 2 Hand-wash all removable parts in warm water.
- 3 Wipe the warming plate with a damp cloth.
- 4 Run two Full Carafe, Classic Brew cycles without coffee grounds, using water only. Discard the water after each cycle is complete.

## SETTING THE CLOCK



- 1 Plug the power cord into an electrical outlet and press the Power button (⏻).
- 2 Press either the **H** (hour) button or **M** (minute) button and the display will flash. Use the **H** and **M** buttons to set the clock to the current time. The AM or PM indicator will illuminate on the left side of the display as you are setting the time.
- 3 When the desired time is reached, allow 5 seconds for it to set.

**NOTE:** If you unplug the brewer or experience a power loss, you will need to reset the clock the next time the brewer is powered on.

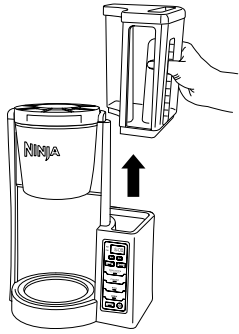


Fig. 1

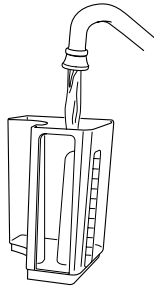


Fig. 2

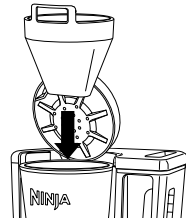


Fig. 3

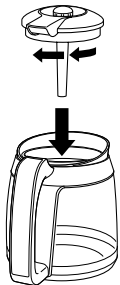


Fig. 4

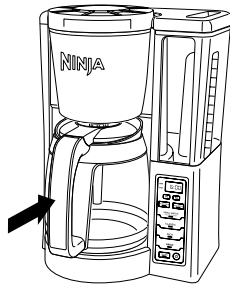


Fig. 5

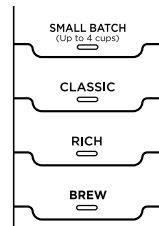


Fig. 6

- 1 Place the brewer on a dry, clean, and level surface. Plug your brewer in and power it on.
- 2 Remove the water reservoir from the unit by lifting it straight up (Fig. 1). Remove the lid entirely and fill the water reservoir to the desired level (Fig. 2).

**NOTE: DO NOT** fill past the 12-Cup Line. If overfilled, remove the water reservoir from the brewer and pour out water until the level is no higher than the 12-Cup Line.

- 3 Place a #4 paper cone filter or a permanent filter (included with some models) in the removable filter holder. Fold the paper filter along the seams, open it fully, and press it firmly into the removable filter holder, making sure it is fully seated.

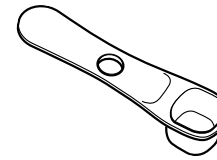
- 4 Place the filter holder into the brew basket (Fig. 3). Then add desired amount of coffee grounds.
- 5 Place the brew-through lid on the carafe and turn clockwise to lock into place (Fig. 4). Then place carafe under the brew basket (Fig. 5).
- 6 Select either CLASSIC or RICH brew. If you are brewing 4-cups or less, also select SMALL BATCH. (Fig. 6).

**Classic Brew** for smooth, balanced hot coffee.

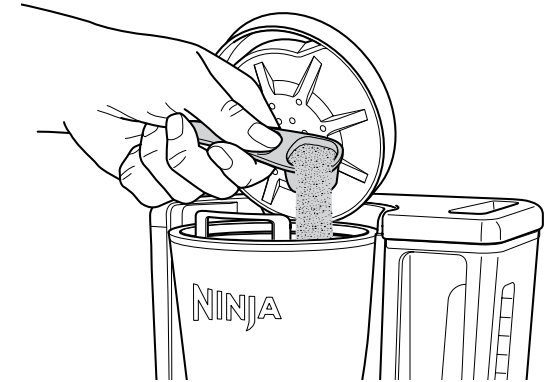
**Rich Brew** for a richer-than-Classic but still smooth coffee flavor that stands up to milk, cream, or flavoring

- 7 Press BREW to start brewing. When the brewing is complete, the unit will beep.

**NOTE:** Each brew has a pre-infusion cycle with varying times. The brew will begin, pause for a short period of time, and then continue brewing. This pre-infusion cycle is used to evenly saturate the coffee grounds.



Integrated Ninja® Scoop



## COFFEE MEASUREMENT CHART

BATCH SIZE	CUPS OF COFFEE	GROUND	WATER
Small Batch (SMALL BATCH button on)	2 cups	2 Ninja Scoops or 2 tbsp.	2-cup line
	4 cups	4 Ninja Scoops or 4 tbsp.	4-cup line
Full Carafe (SMALL BATCH button off)	6 cups	6 Ninja Scoops or 6 tbsp.	6-cup line
	8 cups	8 Ninja Scoops or 8 tbsp.	8-cup line
	10 cups	10 Ninja Scoops or 10 tbsp.	10-cup line
	12 cups	12 Ninja Scoops or 12 tbsp.	12-cup line

Integrated Ninja Scoop is equivalent to 1 tbsp. of coffee.

## CARE & MAINTENANCE



Fig. 7

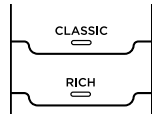


Fig. 8

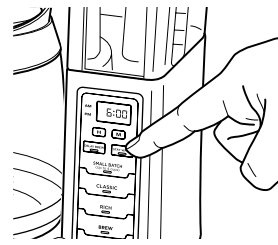


Fig. 9

### PROGRAMMING THE DELAY BREW TIME

- 1 With Power on, press DELAY BREW. The DELAY BREW button will illuminate and the clock will flash "12:00" or the last Delay Brew time that was set (**Fig. 7**).
- 2 While the clock is flashing, use the H and M buttons to set the time you would like the Delay Brew to begin. The AM or PM indicator will illuminate on the left side of the display as you are setting the desired time.
- 3 Select desired brew style and selection will illuminate (**Fig. 8**).
- 4 Once the time, brew size, and brew type have been set, press the DELAY BREW button again to activate, or wait five seconds for the brew time to lock in automatically. The unit will beep to indicate the brew time has been set, and the DELAY BREW button will remain illuminated.

**NOTE:** To deactivate the Delay Brew cycle, press the DELAY BREW button once more and the light on the button will turn off. Any change to the selected brew size or starting any other brew will cancel the programmed Delay Brew. Turning off the unit will also cancel the Delay Brew.

- 5 Place the carafe under brew basket.

**NOTE:** The Ninja® Coffee Brewer must remain on for the Delay Brew function to work. **DO NOT** power off after setting the Delay Brew time.

### PRECISION TEMP WARMING PLATE

The warming plate will turn on once the brew has started. Press the STAY WARM button after the brew to turn off the warming plate (**Fig. 9**). You can turn the warming plate back on by pressing the STAY WARM button again. Wait until surface has cooled completely before touching.

**NOTE: DO NOT** add additional water to the reservoir when using the STAY WARM function.

You can program the warming plate to stay on for up to 4 hours.

- 1 Press and hold STAY WARM button until the clock flashes, displaying the time at which the warming plate is currently set to turn off.
- 2 Quickly press the hour (H) or minute (M) button to adjust the time up to 4 hours. The warming plate is automatically programmed to stay on for 2:00 hours.
- 3 To lock in the new duration, press the STAY WARM button again, or wait 5 seconds for it to lock in automatically.

### CLEANING AFTER A BREW

- 1 After each brew is complete and the coffee grounds have cooled, discard the paper filter. Take out the removable filter holder, rinse, and wash with soap and warm water. If using a permanent filter, dump the grounds into the trash and wash the filter by hand with warm, soapy water or place on the top rack of the dishwasher.

**NOTE:** If coffee grounds spill over into the filter holder, remove the filter holder and rinse it.

- 2 We recommend cleaning your carafe with warm, soapy water, or placing it on the top rack of your dishwasher. If you want to clean the carafe more thoroughly, we recommend using a soft foam brush such as the one shown to the right.
  - a Empty the water reservoir.
  - b Hand-wash with dish soap and rinse or place on the top rack of your dishwasher.



- 3 Unplug your unit and let the warming plate cool before cleaning. Wipe down with a soft cloth and warm water. **DO NOT** immerse the base in water.

### DESCALING YOUR NINJA® COFFEE BREWER

- 1 Use a descaling solution specifically formulated for coffeemaker cleaning and follow the directions on the package. Fill the water reservoir up to, but not exceeding, the 12-Cup Line (60 fl. oz.).

#### OR

Add 16 oz. of white vinegar to the water reservoir, then fill the rest of the reservoir with water up to, but not exceeding, the 12-Cup Line (60 fl. oz.).

- 2 Once the water reservoir is filled with your cleaning solution or vinegar mixture, press the CLEAN button. The clean cycle takes approximately 25-35 minutes. To cancel the clean cycle, either press the CLEAN button again or press the Power button.
- 3 The unit will beep when the clean cycle successfully completes. Refill the reservoir with fresh water up to, but not exceeding, the 12-Cup Line, and set the empty carafe beneath the brew basket. Run a full Classic Brew cycle with water only to remove any cleaning solution that could affect the flavor of your coffee.

**NOTE:** Make sure the SMALL BATCH button is not selected/illuminated and set the empty carafe beneath the brew basket.

# TROUBLESHOOTING GUIDE

---

## There is sediment in my coffee.

- If there is sediment at the bottom of the brewed coffee, this may be due to using finely ground coffee in the permanent filter.
- To reduce the amount of sediment in the brewed coffee, use a slightly coarser grind or use a paper filter.

## There are grounds in my coffee.

- Either the permanent filter or a paper filter must be in place when brewing.
- Using too many grounds can cause the filter holder to overflow. Once cooled, clean out the filter holder and refill using the appropriate amount of coffee (1 scoop per cup).
- Finely ground coffee can clog the filter holder. For best brewing results, use a medium-grind coffee.

## Brew basket drips even after the brew cycle is completed.

- The removable filter holder valve may be clogged. Rinse the filter holder with tap water and press the valve repeatedly until the clog is cleared.

## Paper filter is folding over.

- The unit is designed to take a #4 cone filter. Be sure you are using this size and shape, as larger sizes may fold over. Allow the filter holder to cool before handling. Be sure the paper filter is folded along its two seams and is pressed firmly into the filter holder. Alternatively, you can wet the sides of the paper filter to temporarily adhere it to the filter holder.
- If the problem persists, try using the permanent filter instead of a paper filter.

**NOTE:** When using a paper filter, **DO NOT** use the permanent filter.

## What impacts coffee brew volume?

- When you make hot coffee, the coffee grounds will absorb some of the water that is brewed, resulting in slightly less brewed coffee than amount of water used. The more coffee you use, the more water will be absorbed.

## Coffee is weak

- For a stronger coffee, use the Rich Brew setting, try darker-roast grounds, or use the permanent filter rather than a paper filter. If you want an even bolder flavor, you can add more coffee grounds. Additional grounds do absorb water, so you may get more concentrated coffee but overall less liquid volume.

## Coffee is strong

- For milder coffee, try the Classic Brew setting using light-roast grounds and a paper filter rather than the permanent filter. If you want an even milder flavor, you can put fewer grounds in the filter holder.

## Brew will not start.

**NOTE:** The brew will begin, pause, and then continue. This process is used to evenly saturate the coffee grounds.

- Ensure the unit is powered on and the display is illuminated. If there are no lights, the machine is not getting power. Try a different outlet and press the Power button.
- Check to make sure there is water in the water reservoir.
- Make sure the carafe is in place. The brewer will not dispense coffee if the carafe is not in place. If it is not in place, the brew will remain in the brew basket, which could lead to overflow.
- If the brew still does not start, it may be time to run a clean cycle. Please refer to the Descaling Your Ninja® Coffee Brewer section.

## Brew cycle is too slow.

- A full carafe brew will take approximately 12–15 minutes. If a full carafe brew takes longer than expected, you may need to descale your unit.

## Carafe overflowed.

- The carafe may not have been empty prior to brewing, or the water level exceeded the Max Fill line on the water reservoir prior to brewing. Reminder, do not add additional water to the reservoir after a brew or cleaning cycle has already started.
- For Classic brew, the carafe holds 60 fl. oz. To avoid overflows, make sure carafe is empty prior to brewing and the water reservoir is not filled past the 12-Cup Line.

## Brew basket overflowed.

- Check that the carafe is in place with the lid secured. If the carafe is in place, the bottom of the filter holder may be clogged. This can happen with finely ground coffee or too many coffee grounds in the filter holder. Wash brew basket pieces per the Care & Maintenance instructions
- Medium-grind coffee is recommended.

---

## ORDERING REPLACEMENT PARTS

To order additional parts and attachments, visit our website: [ninjaaccessories.com](http://ninjaaccessories.com) or contact Customer Service: **1-877-646-5288**.



The 1-Year Limited Warranty applies to purchases made from authorized retailers of SharkNinja Operating LLC. Warranty coverage applies to the original owner and to the original product only and is not transferable.

SharkNinja warrants that the unit shall be free from defects in material and workmanship for a period of 1 year from the date of purchase when it is used under normal household conditions and maintained according to the requirements outlined in this instruction manual, subject to the following conditions and exclusions.

**What is covered by my warranty?**

1. The original unit and/or non-wearable components deemed defective, in SharkNinja's sole discretion, will be repaired or replaced for up to 1 year from the original purchase date.
2. In the rare event that a replacement unit is issued, the warranty coverage ends 6 months after the receipt date of the replacement unit or the remainder of the existing warranty, whichever is greater. If the unit is replaced, SharkNinja reserves the right to replace the unit with one of equal or greater value.

**What is not covered by my warranty?**

Our Customer Service and Product Specialists are available to provide all the warranty service options available to you, including the possibility of upgrading to our VIP Warranty Service Options for select product categories.

1. Normal wear and tear of wearable parts (including reservoir lid, removable water reservoir, scoop, carafe lid, and glass carafe) that require regular maintenance and/or replacement to ensure the proper functioning of your unit, are not covered by your warranty.
2. Any unit that has been tampered with or used for commercial purposes.
3. SharkNinja will cover the cost for the customer to send the unit to us for repair or replacement. A fee of \$19.95 for return shipping costs will be charged at the time of return shipment of the repaired or replacement unit.
4. Damage caused by misuse, abuse, or negligent handling, or damage due to mishandling in transit.
5. Consequential and incidental damages.
6. Defects caused by or resulting from damages from shipping or from repairs, service, or alteration to the product or any of its parts that have been performed by a repair person not authorized by SharkNinja.
7. Products purchased, used, or operated outside of North America.

**Problems with your unit/How to get service:**

If your appliance fails to operate properly while in use under normal household conditions within the warranty period, visit [ninjakitchen.com](http://ninjakitchen.com) for product care/maintenance self-help. Our Customer Service and Product Specialists are also available at 1-877-646-5288 to assist with product support and warranty service options.

**How to initiate a warranty claim:**

You can call 1-877-646-5288 to have a Customer Service specialist assist you. Please note, you must call 1-877-646-5288 to initiate a warranty claim. Return and packing instruction information will be provided at that time. For Customer Service hours, visit [ninjakitchen.com](http://ninjakitchen.com). Replacement parts are available for purchase at [ninjaaccessories.com](http://ninjaaccessories.com). For more information on what are classified as wearable and non-wearable parts, visit [ninjakitchen.com/warranty](http://ninjakitchen.com/warranty). This warranty gives you specific legal rights, and you may also have other rights that vary from state to state. Some states **DO NOT** permit the exclusion or limitation of incidental or consequential damages, so the above may not apply to you.

**PRODUCT REGISTRATION**

Please visit [registeryourninja.com](http://registeryourninja.com) or call 1-877-646-5288 to register your new Ninja® product within ten (10) days of purchase. You will be asked to provide the store name, date of purchase, and model number along with your name and address.

The registration will enable us to contact you in the unlikely event of a product safety notification. By registering, you acknowledge to have read and understood the instructions for use and warnings set forth in the accompanying instructions.





**SharkNinja Operating LLC**  
**US: Needham, MA 02494**  
**1-877-646-5288**  
**ninjakitchen.com**

Illustrations may differ from actual product. We are constantly striving to improve our products, therefore the specifications contained herein are subject to change without notice.

NINJA and THERMAL FLAVOR EXTRACTION are registered trademarks of SharkNinja Operating LLC.

For SharkNinja U.S. Patent information, visit [sharkninja.com/uspatents](http://sharkninja.com/uspatents).

© 2018 SharkNinja Operating LLC  
CE200\_Series\_IB\_E\_REV\_Mv2  
PRINTED IN CHINA / IMPRIMÉ EN CHINE / IMPRESO EN CHINA



**@ninjakitchen**