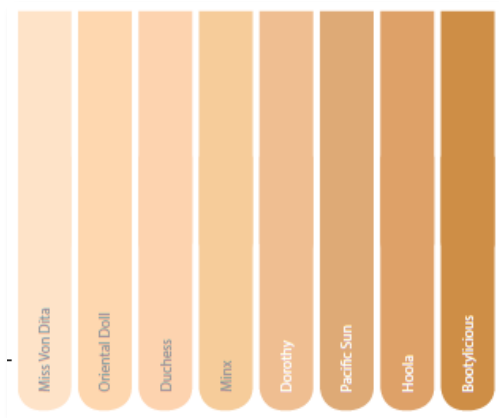


## **Thin Lizzy Colour Match Kit**

Find the perfect shade of 6in1, Mineral Foundation or Concealer Crème to match your skin tone.



### **Finding the shade that's right for you:**

Our skin tone and complexion can change throughout the season, so you may be one shade in winter and a slightly darker shade in summer with the increase of sun exposure.

### **To find your perfect shade:**

Swipe the colours that look closest to your skin tone on your jaw line down to your neck. The shade that matches your neck is the one you should choose.

### **Warm or Cool Tones:**

<b>Indicator</b>	<b>Warm Tones</b>	<b>Cool Tones</b>
Do you flush / blush easily?	YES	NO
Do you look pale / washed out in the morning with no colour in your face?	NO	YES
Do you try and tone down the colour in your face?	YES	NO
Or do you add colour to your face?	NO	YES

Do you wear fake tan? If so you may need to go a shade darker than your regular colour and a warm tone will probably blend in better.

**For Rosy / Cool Skin tones – for skin that blushes or burns easily**



For Fair Skin  
Light Skin with Pink undertones  
Tends to look better with Silver jewellery  
Celebrity reference: Drew Barrymore,  
Kate Winslet

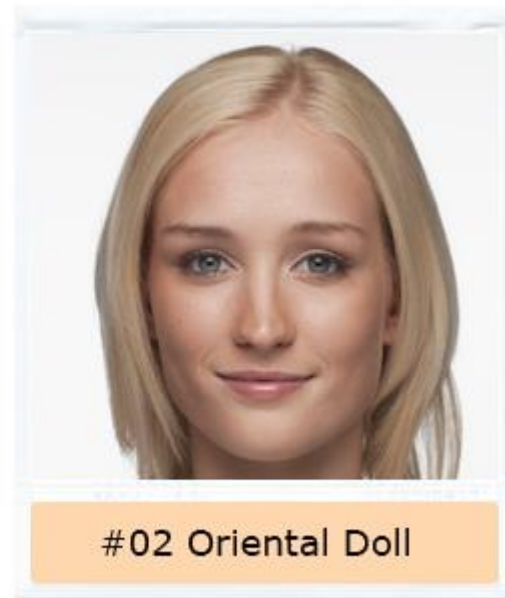


For Medium Skin  
Medium Skin with yellow undertones  
Tends to look better with Gold jewellery  
Celebrity reference: Cameron Diaz,  
Celine Dion, Kate Hudson

**For Olive / War Skin tones – for skin that tans easily without burning**



For very fair skin  
Light Skin with Pink undertones  
Tends to look better with Silver jewellery  
Celebrity reference: Kate Middleton  
Jennifer Anniston



For Fair Skin  
Light Skin with neutral undertones  
Always burns before tanning  
Celebrity reference: Adele, Amy Adams, Taylor  
Swift



#03 Minx

For Medium Skin  
Medium Skin with Yellow undertones  
Tends to look better with Gold Jewellery  
Celebrity reference: Diane Kruger, Celine Dion  
Lucy Liu, Penelope Cruz



#04 Pacific Sun

For Medium-Dark Skin  
Very Gold, Light Tan, Honey Skin tones  
Common shade in Mediterranean / Latin  
demographic, tans easily  
Celebrity reference: Kim Kardashian,  
Paula Patton, Halle Berry



#05 Hoola

For Dark Skin  
Tan with neutral undertones, deep olive skin tones  
Common Shade in African American demographic,  
Tans very easily  
Celebrity reference: Jennifer Lopez  
Rihanna



#06 Bootylicious

For Deep Dark Skin  
Rich brown with yellow undertones  
Common Shade in Pacific Island demographic  
Celebrity reference: Janet Jackson  
Mary J. Blige

## Competitor Shade reference

Thin Lizzy	Revlon	L'Oreal	Shesiedo / Moisture Mist	MAC	Clinique	Estee Lauder
Miss Von Dita	Ivory	Classic Ivory	Honey	NW15	Alabastor	
Oriental Doll	Sand Beige & Buff	Natural Beige	Ivory	NC20	Vanilla	Dawn Beech 1w1
Duchess	Nude & Medium Beige	Natural Ivory Nude Beige	Rose Beige	NW20	28 Light 01 Petal Ivory	
Minx	Fresh Beige 003 Light	Natural Buff	Natural Ochre	NC30	Nude Beige	2N2 Ivory Beige Soft Ivory 2c1/01 Blonde 2n1/13
Dorothy	Natural Beige 004 Light/medium	True Beige Creamy Natural	Breezy Beige Tawny Rachel	NW25	04 Cream Chamois 08 Porcelain Beige 07 Neutral	17 Biscuit 3nt Fresco 2n1 Vanilla 3C1 Bare Beige 3w1/22
Pacific Sun	Natural Tan 005light/med	Buff Beige	Café Au Lait	NC35		Pebble 3n1
Hoola	007med'deep True Beige 006 Medium	Sand Beige	Sunny Amber	NC42 NW35	Honey Beige 06 Linen Sand	Warm Gold 3W1 Shell Beige 4N2 Fawn Outdoor Beige 4C2 Pale Almond 3c1/05
Bootylicious	008 Deep	Sun Beige Classic Tan	Bronze	NW45	Wheat	Rich Fawn 4N1 Natural Tan 5n4

## Mineral Foundation & Concealer Crème Shades

Available in 8 versatile shades:



## Discontinued Shades

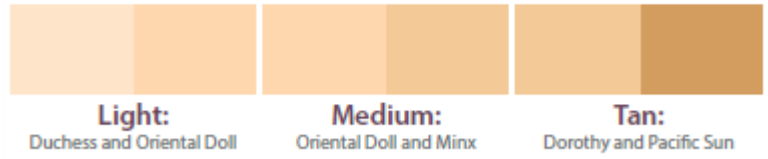
### Shade Replacements

Finding new favourites to replace your discontinued shades

Your Old Shade	Your New Shade
Missy	Bootylicious
Enchanted Rose	Miss Von Dita
Bella	Hoola or Pacific Sun

# 7 Piece Loose MINERALS Starter Kit

Available in 3 versatile shades:



## Starter Kit Light



Duchess Concealer 7.5ml  
Oriental Doll Minerals 3g  
Duchess Minerals 3g  
6in1 Light 2g  
Veil 2g  
6in1 Brush  
Mineral Powder Brush

## Starter Kit Medium



Oriental Doll Concealer 7.5ml  
Oriental Doll Minerals 3g  
Minx Minerals 3g  
6in1 Light 2g  
Veil 2g  
6in1 Brush  
Mineral Powder Brush

## Starter Kit Tan



Pacific Sun Concealer 7.5ml  
Dorothy Minerals 3g  
Pacific Sun Minerals 3g  
6in1 Light 2g  
Veil 2g  
6in1 Brush  
Mineral Powder Brush

## Loose MINERALS

Shades available:  
Mineral Foundation Loose Powder 15g

Oriental Doll

Duchess

Minx

Dorothy

Pacific Sun



The 6in1 Professional Powder is available in 2 colours: Dark and Light.

- Do you have Very Fair, Fair, Medium, Medium-dark Skin tone? Choose "Light" 6in1 Professional Powder
- Do you have Dark or Deep dark skin tone? Choose "Dark" 6in1 Professional Powder

Are you in doubt? Choose Light – it works well on every skin tone.

Light is the colour that 80% of our customers purchase as it suits fair to olive tones, and the dark is for very dark tones.