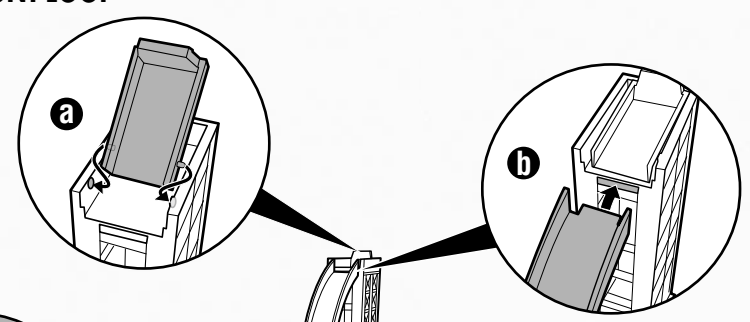


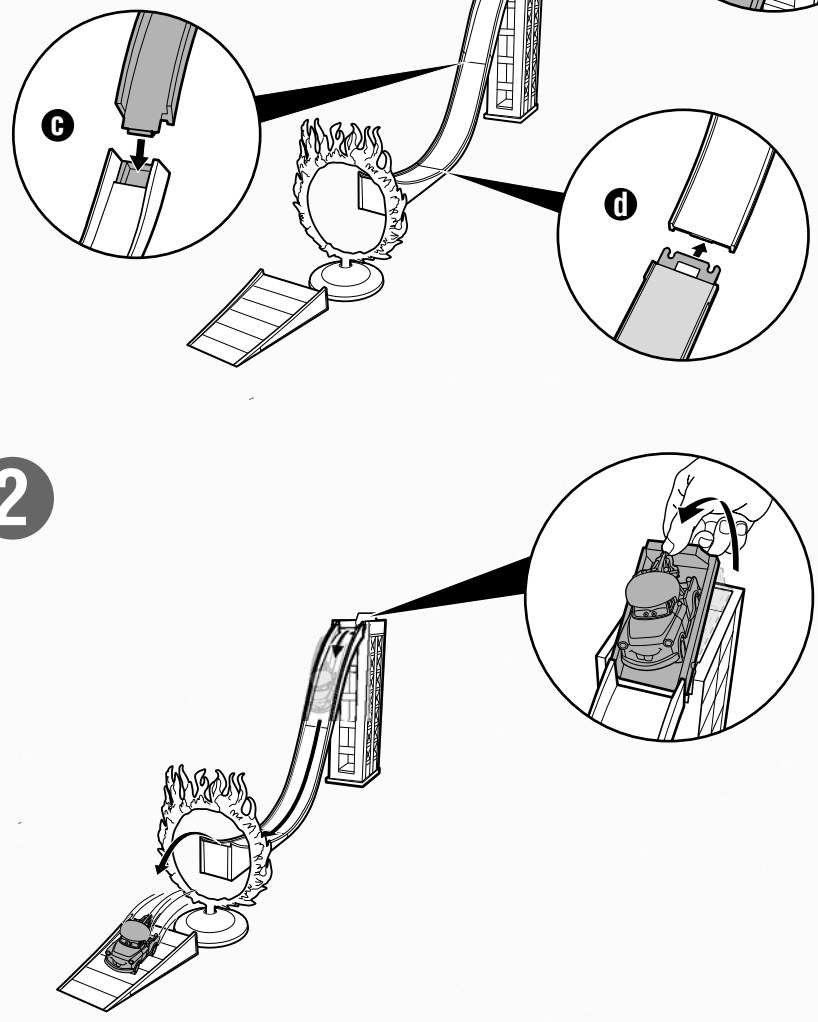
ASSEMBLE & PLAY

FIRE STUNT LOOP

1



2



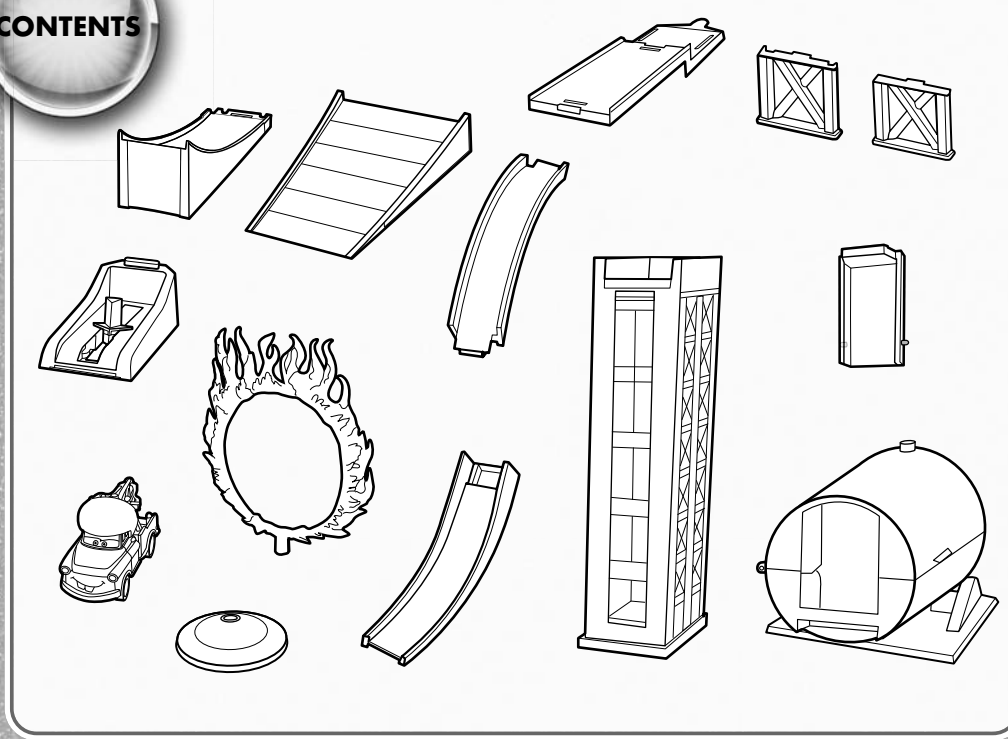
MATER THE GREATER
SUPER STUNT SHOW

INSTRUCTIONS

Please keep these instructions for future reference as they contain important information.

4+

CONTENTS



© 2010 Mattel, Inc. All Rights Reserved.
Mattel, Inc., 636 Girard Avenue, East Aurora, NY 14052, U.S.A. Consumer Relations 1-800-524-8697. Mattel U.K. Ltd., Vanwall Business Park, Maidenhead SL6 4UB. Helpline 01628 500303. Mattel Australia Pty., Ltd., Richmond, Victoria, 3121. Consumer Advisory Service - 1300 135 312. Mattel East Asia Ltd., Room 1106, South Tower, World Finance Centre, Harbour City, Tsimshatsui, HK, China. Diimport & Diedarkan Oleh: Mattel SEA Ptd Ltd.(993532-P) Lot 13.5, 13th Floor, Menara Lien Hoe, Persiaran Tropicana Golf Country Resort, 47410 PJ. Tel:03-78803817. Fax:03-78803867.



© Disney/Pixar

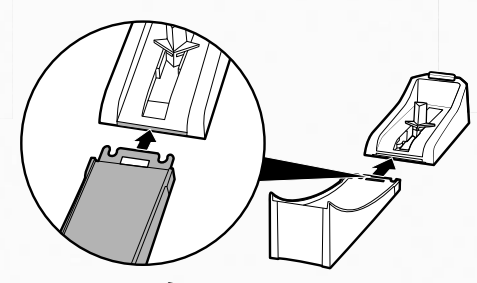
service.mattel.com

INSTRUCTION SHEET SPECIFICATIONS	
Toy No.:	R7045
Part No.:	0920
Trim Size:	A4
Folded Size:	A5
Type of Fold:	accordion
# colors:	One
Colors:	Black
Paper Stock:	White Offset
Paper Weight:	70 lb.
EDM No.:	001a

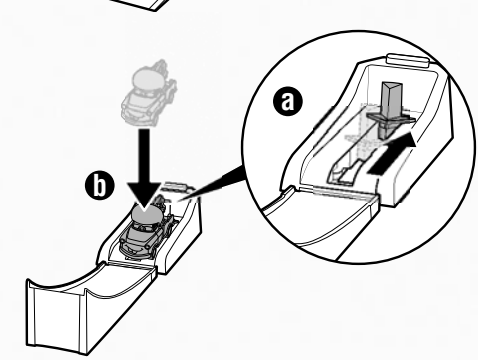
ASSEMBLE & PLAY

DAREDEVIL JUMP

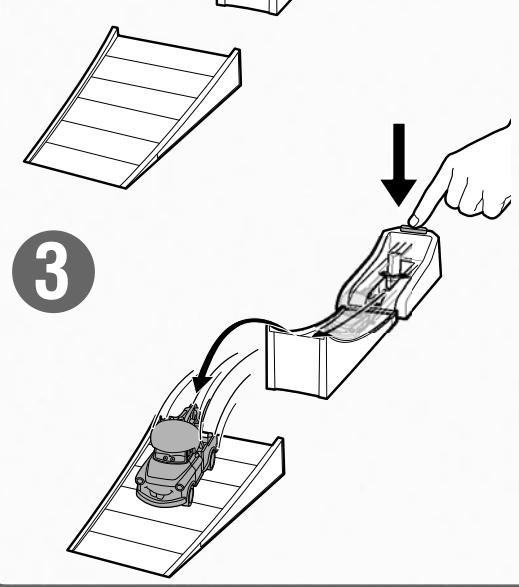
1



2



3

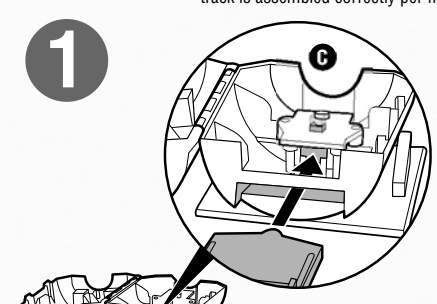


ASSEMBLE & PLAY

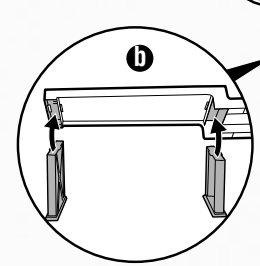
CANNON BLAST-OFF

The launcher will not function unless the track is assembled correctly per figure C.

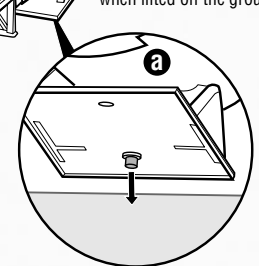
1



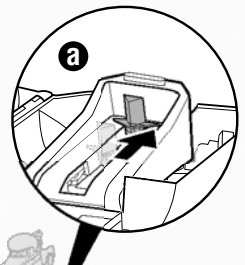
b



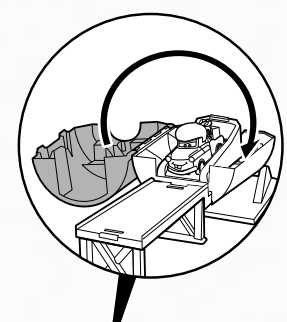
a



3



4



5

