

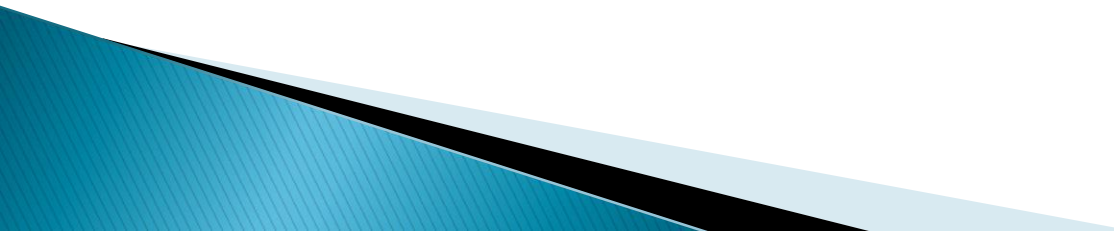
MICRON

SENSE • INNOVATE • EDUCATE

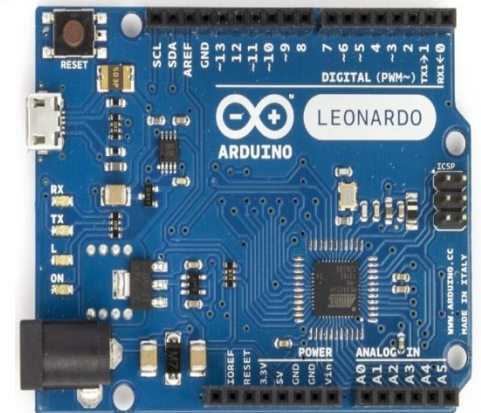
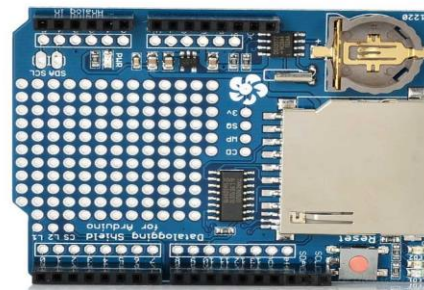
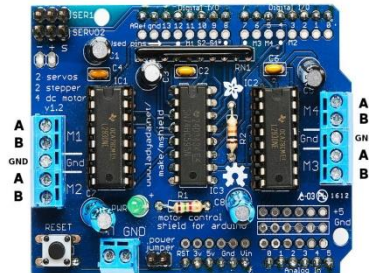
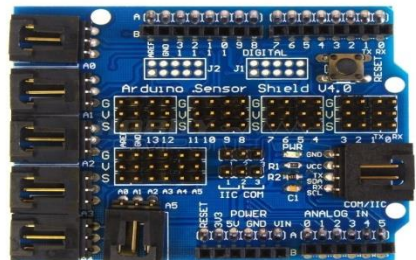
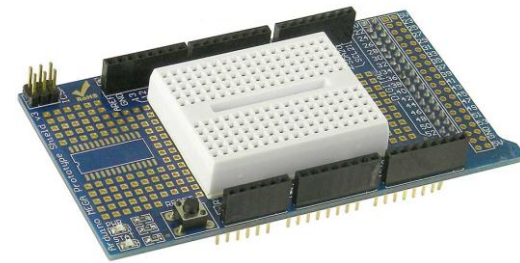
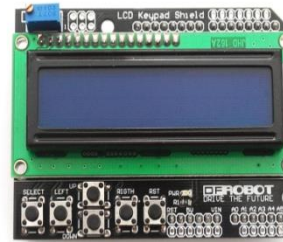
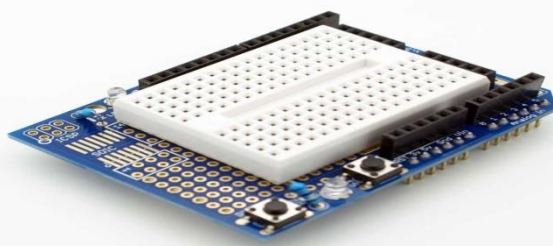
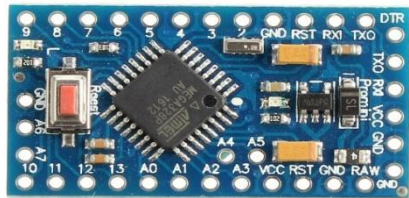
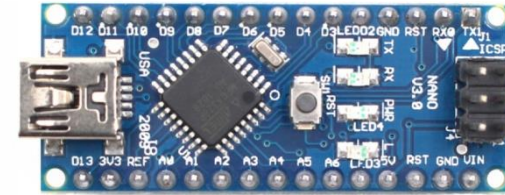
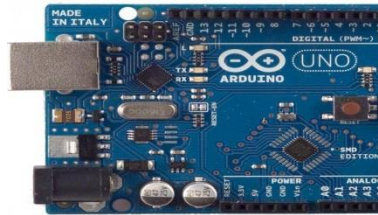
Address: Shop No. 29/30, 2nd Floor, Yamuna Building
Tara Temple Lane, Near Bombay Biscuit, Lamington Road,
Grant Road East, Mumbai – 400007, Maharashtra, India

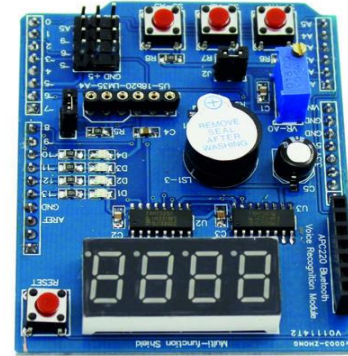
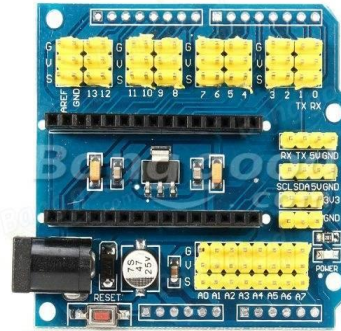
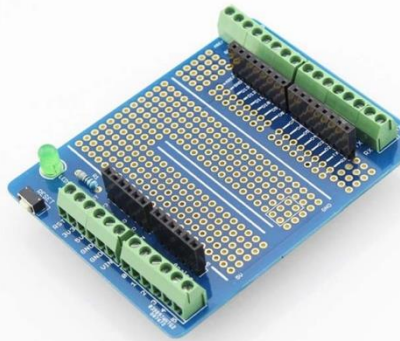
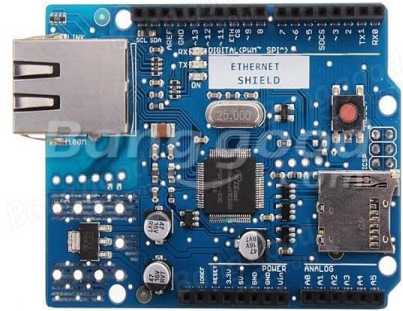
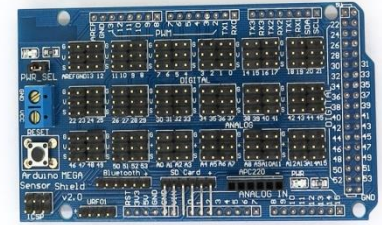
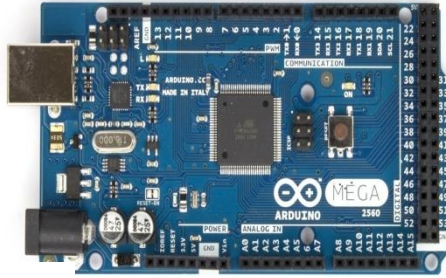
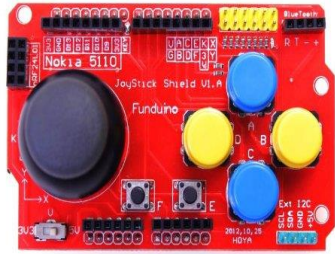
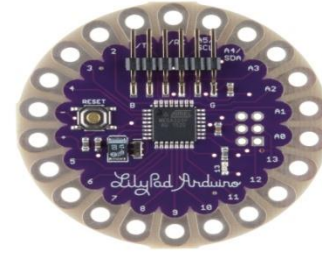
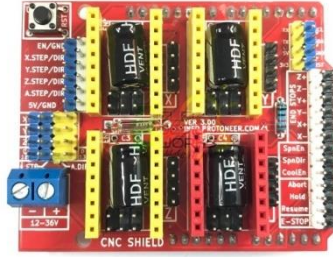
MOB: 766695677, 8369438600

ABOUT US

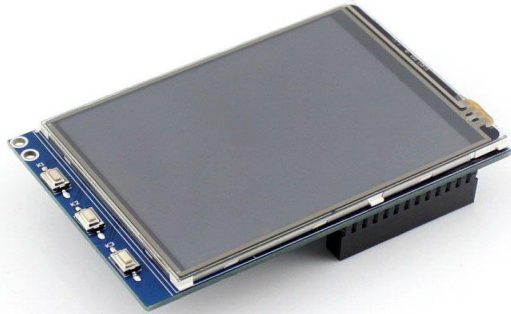
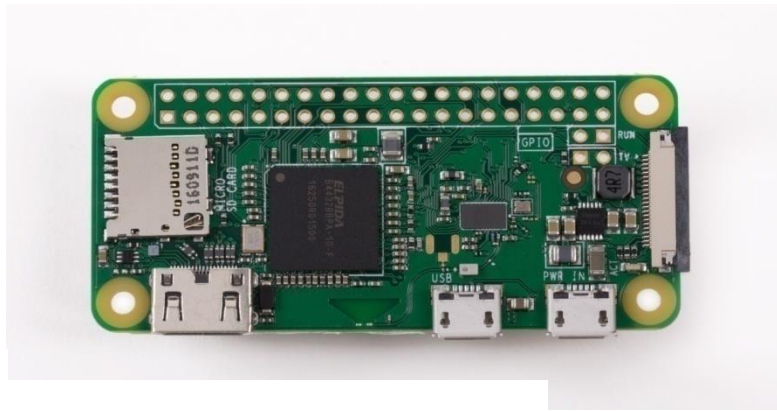
- ▶ TRADING AND DISTRIBUTION COMPANY
 - ▶ LEADERS IN SUPPLIES OF ELECTRONIC COMPONENTS, EDUCATIONAL KIT, WIRELESS MODULES, ETC
 - ▶ SENSORS, QUADCOPTERS, GSM AND GPS MODULES AND MODEMS.
 - ▶ HIGHLY RELIABLE AND DEMANDED PRODUCTS.
- 

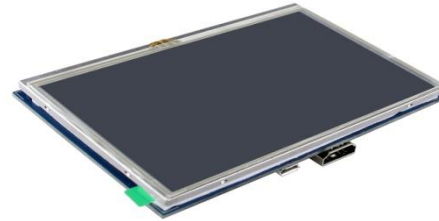
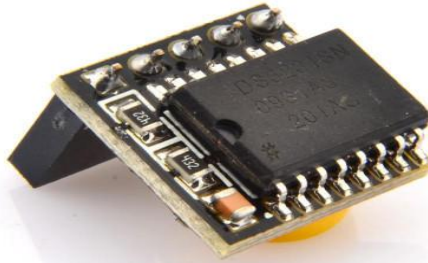
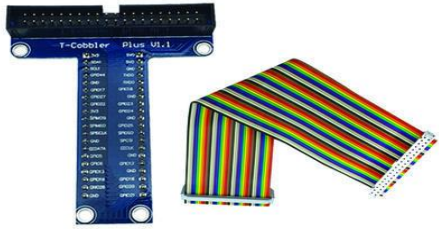
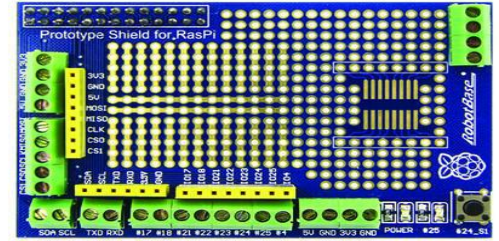
ARDUINO AND ARDUINO SHIELDS



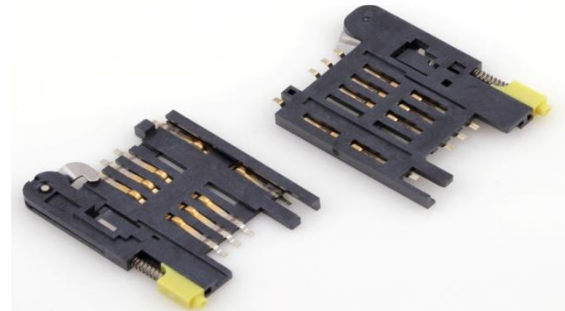
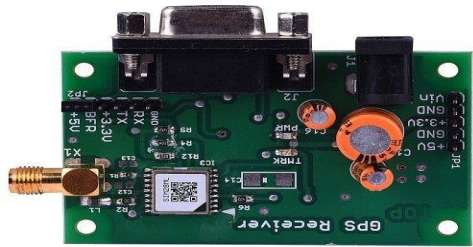


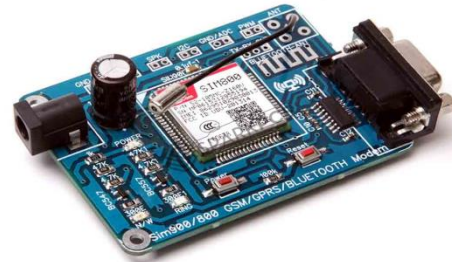
RASPBERRY PI BOARDS AND ACCESSORIES





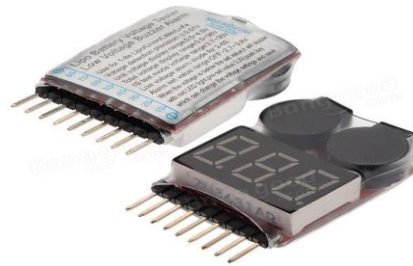
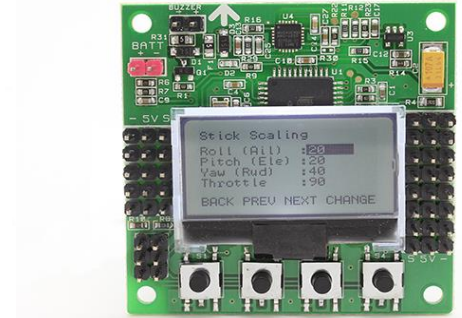
GSM GPS AND GPRS



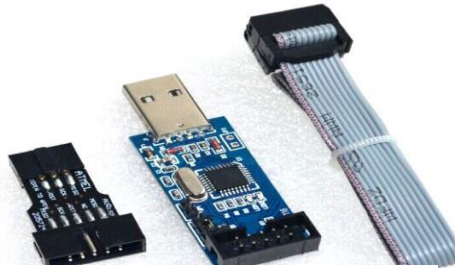
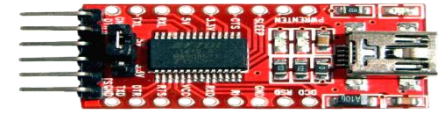
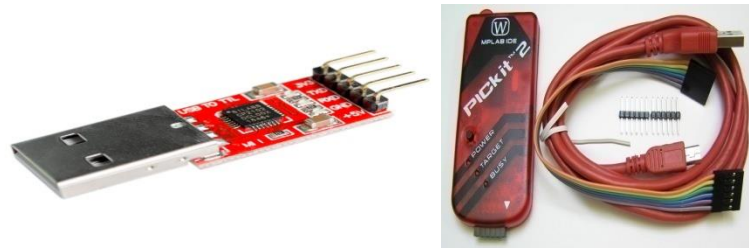


QUADCOPTER AND ACCESSORIES

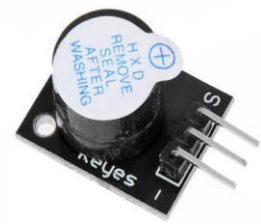
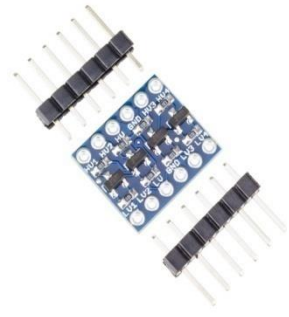
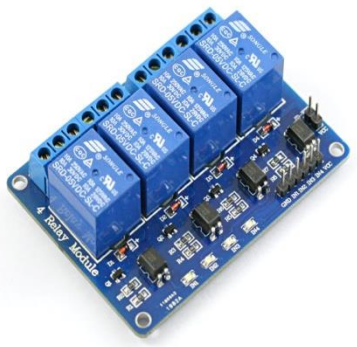
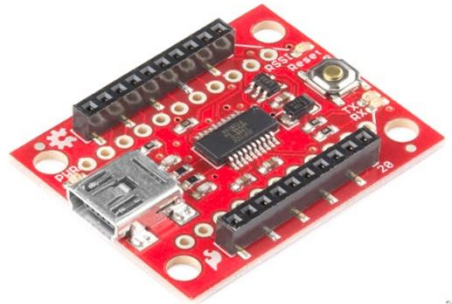


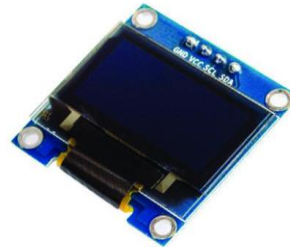
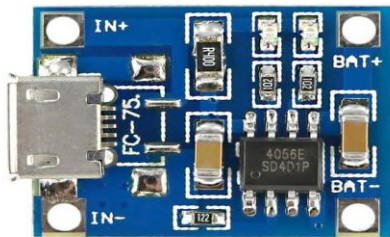
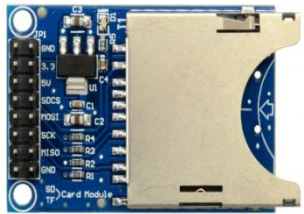
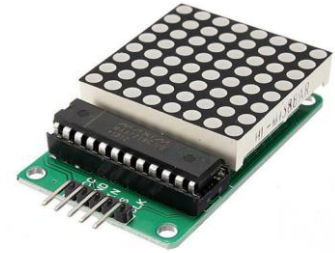
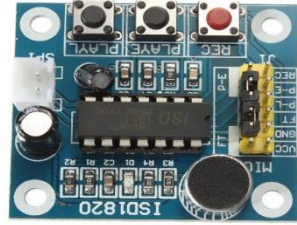
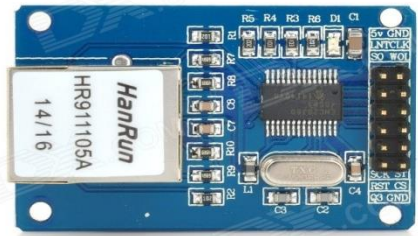


PROGRAMMERS AND CONVERTERS

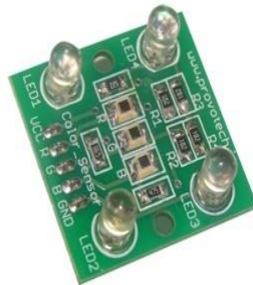
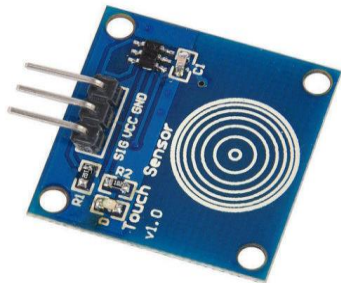
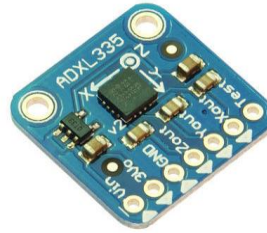
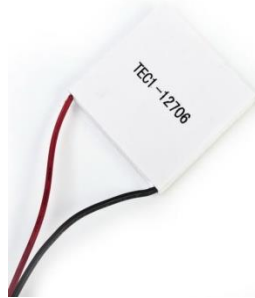
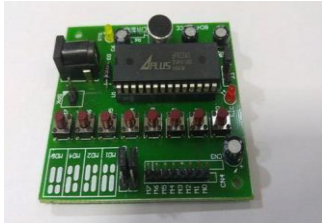
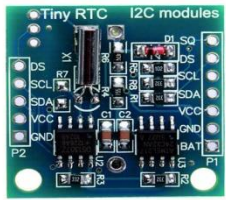


INTERFACE BOARDS





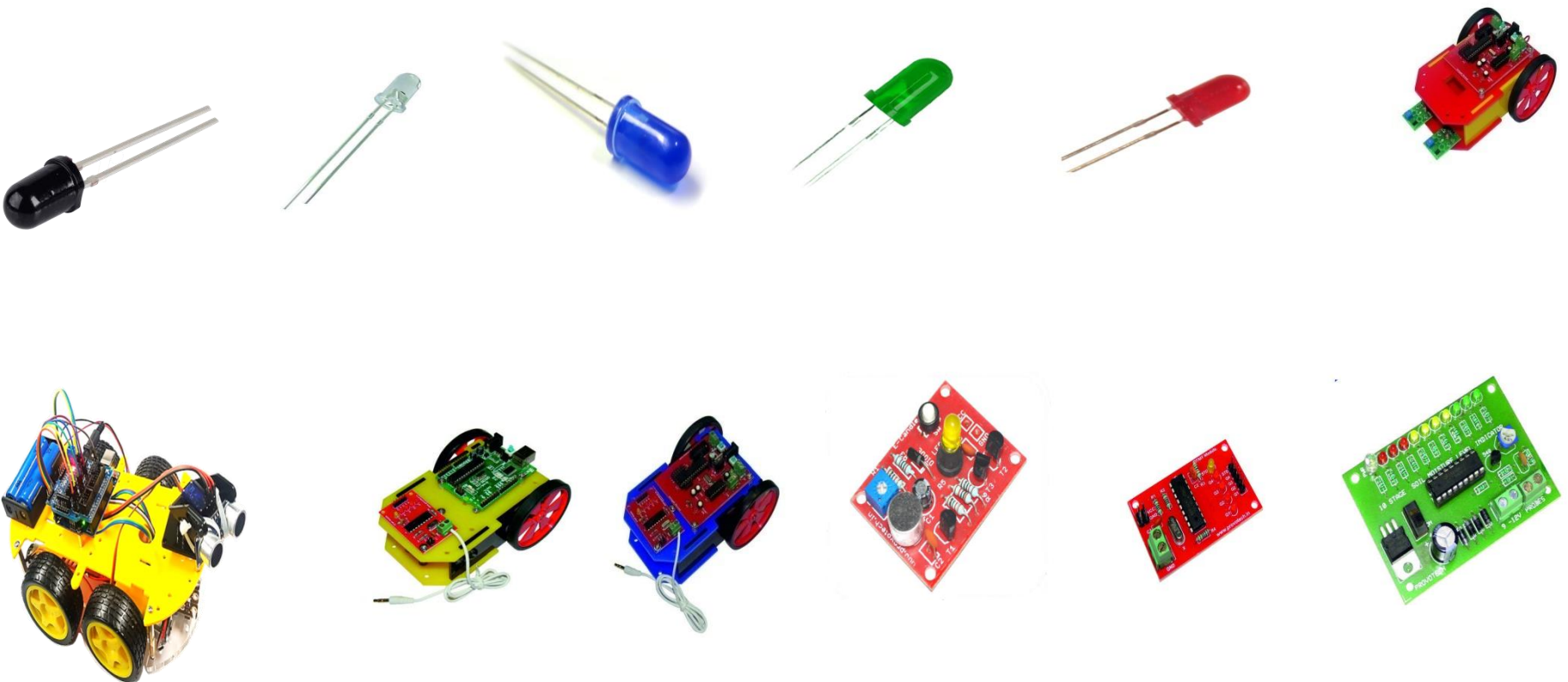
SENSOR MODULES



DRIVER BOARDS AND MODULES



HOBBY KITS AND ELECTRONIC COMPONENTS



ROBOKITS AND ACCESSORIES



MOTOR AND WHEELS



Thank you!

