



Cisco Network Assistant



Amanda Holdan, Product Manager
Matt Laherty, Marketing Manager

CNA—The Solution for Many Business Needs

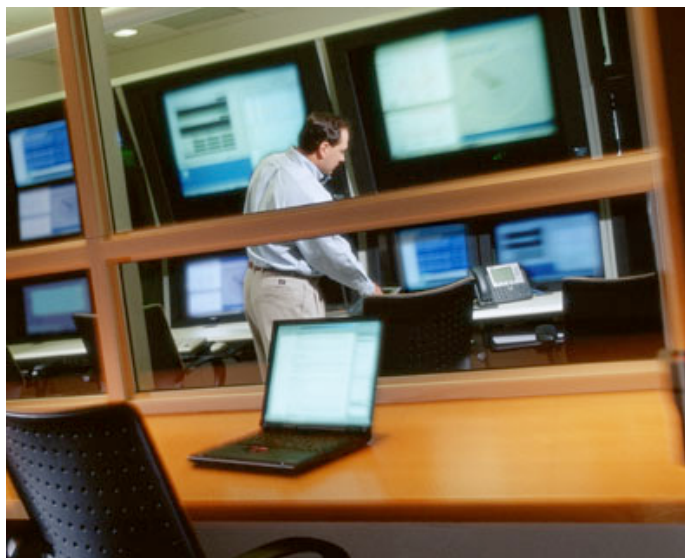
- Accelerate Network Turn-Up
- Simplify initial configuration
- Ensure Cisco recommended Security and QoS policies are right and enabled on day one
- Simplify ongoing management
- Simplify troubleshooting
- Optimize utilization of existing resources
- Reduce TCO (while ensuring the network is high performance, secure, reliable, and supports next generation applications that can be used for competitive advantage)



What is CNA?

PC based GUI interface for network...

1. Configuration
2. Monitoring
3. Troubleshooting
4. Optimization



“It’s like a NOC in a PC”

CNA Benefits

1. Configuration:
Saves time and ensures Cisco best practices are enabled.

2. Monitoring:
Quickly view network topology and alerts—save time by getting a complete network view from one device.

**Available for
Download to your PC**
www.cisco.com/go/cna

3. Troubleshooting:
Quickly isolate probable causes. CNA removes much of the initial guess work.

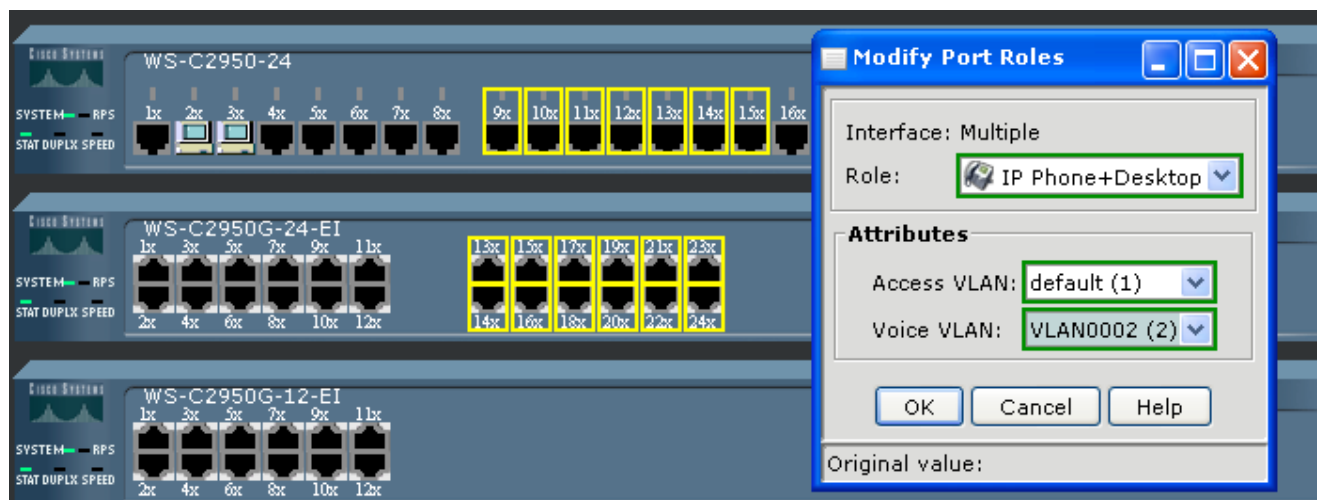
4. Optimization:
Use real-time metrics and a topology view to assess optimization opportunities.

1. Configuration (of Switches)

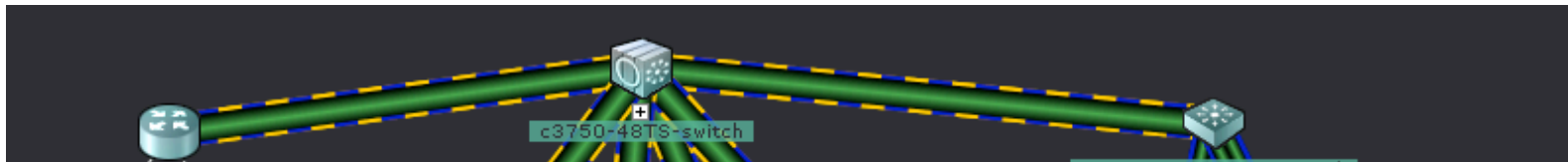
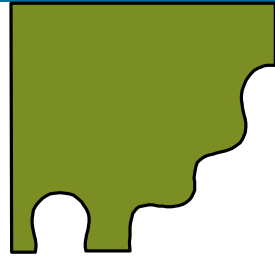
CNA facilitates quick turn up with best practice configs

Key Features:

- Cisco Smartports—CCIE best practiced configuration roles
- Smartports Advisor—Prevents mis-configuration by detecting new devices and recommending appropriate rules
- Concurrent port configuration on multiple devices



1. Configuration—of Network Attached Devices (like Access Points)



Secure wireless devices by configuring SSID and encryption

The screenshot displays a network configuration interface. In the background, a network diagram shows a central switch labeled 'c3750-48TS-switch' connected to two other switches. A wireless access point labeled 'ap' is connected to the central switch. The foreground shows a 'Secure Wireless' configuration window with the following details:

- Devices:** Hostname: ap
- SSIDs:** A table with columns for SSID, VLAN, Security, Encryption, and Authentication.

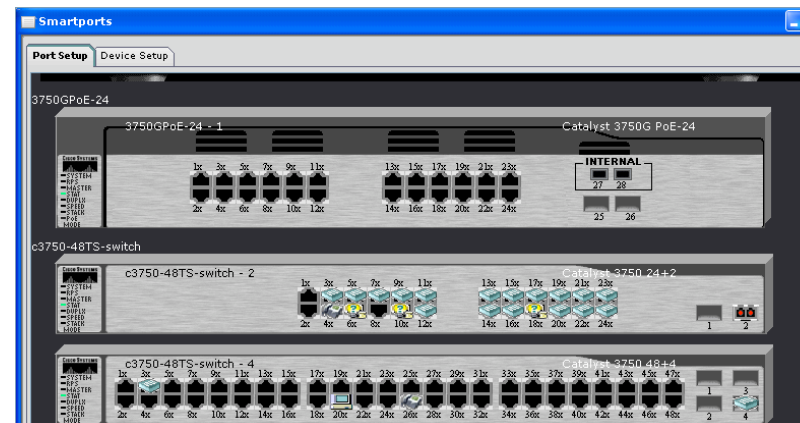
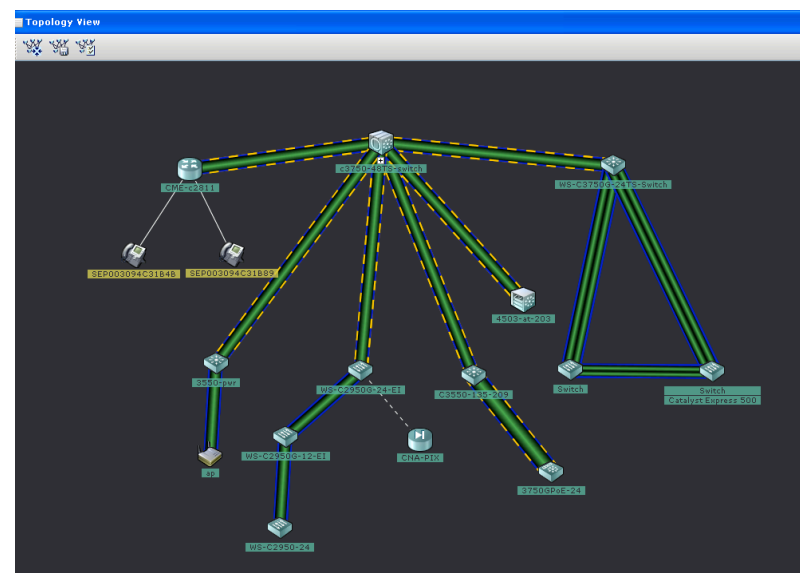
Overlaid on the 'Secure Wireless' window is a 'Create SSID' dialog box with the following settings:

- SSID:** [Empty text field]
- Broadcast in Beacon:**
- VLAN [1-4095]:** Select or Enter a VLAN ID [Dropdown menu]
- Native VLAN:**
- Security Settings:**
 - Security:** No Security [Dropdown menu]
 - Encryption:** none
 - Authentication:** open

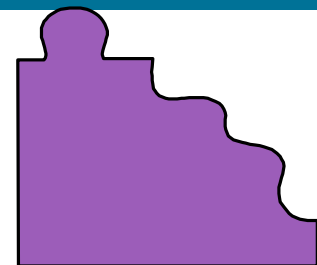
Buttons for 'OK', 'Cancel', and 'Help' are visible at the bottom of the dialog box.

2. Monitoring Simplified

- Topology and front panel views
- Device discovery
- Report key metrics
- Port Statistics
- Network inventory
- VLAN highlighting
- Bandwidth graphs
- Cross launch Device managers



3. Troubleshooting Made Easy



- Ping and Trace
- Easy Telnet access
- Event Notification includes recommendations
- Enhanced Maintenance Features
- Drag-n-Drop IOS Upgrade
- Scheduled Software Upgrade
- Configuration archive on PC

The screenshot displays two overlapping windows from a network management application. The background window is titled 'Event Notification' and shows a list of critical events. The foreground window is titled 'Port Statistics' and shows a table of port statistics for a device with hostname 'WS-C2950-24'.

Event Notification Window:

Type	Time	Event Desc...	Resolvable	Acknowledg...	Device
2-Critical	Aug 02 10:22:03	Fa10: This port ...	No	<input type="checkbox"/>	Switch
2-Critical	Aug 02 10:22:03	Fa11: This port ...	No	<input type="checkbox"/>	Switch
2-Critical	Aug 02 10:22:03	Fa12: This port ...	No	<input type="checkbox"/>	Switch

Port Statistics Window:

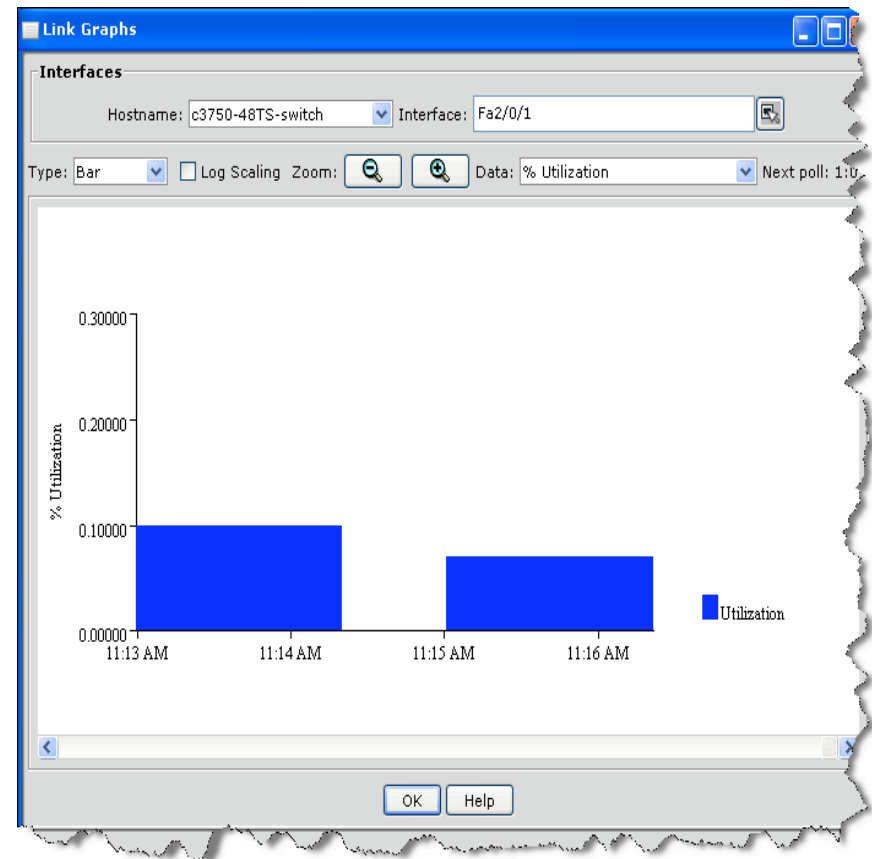
Hostname: WS-C2950-24

Inter...	Port ...	Tx R...	Rx R...	Tx B...	Rx B...	Tx R...	Rx R...	Tx M...	Rx M...	Disc...	Pkts ...
Fa0/1		0.271...	0.032...	0.27142	0.032...	65.9	45.8	0	1.7	771738	0
Fa0/2		0	0	NA	NA	0	0	0	0	0	0
Fa0/3		0	0	NA	NA	0	0	0	0	0	0
Fa0/4		0	0	NA	NA	0	0	0	0	0	0
Fa0/5		0	0	NA	NA	0	0	0	0	0	0
Fa0/6		0	0	NA	NA	0	0	0	0	0	0
Fa0/7		0	0	NA	NA	0	0	0	0	0	0
Fa0/8		0	0	NA	NA	0	0	0	0	0	0

Buttons: Clear Counters, Save Report, OK, Refresh, Help

4. Network Optimization: Getting the Most from Your Investment

- Event notification alerts you when problems occur
- Expose link congestion via port utilization graphs
- Run port and link tests
- Deep dive into Layer 2 and Layer 3 specifics with Access control list reports



Summary

- CNA has full TAC support
- CNA is offered in several languages:
 - French
 - Italian
 - German
 - Spanish
 - Japanese
 - Chinese
- We invite **you** to download it free at www.cisco.com/go/cna



