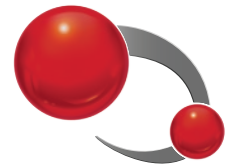


Connected Components Workbench Software Quick Tips



Main Window

Controller Organizer or Project Organizer

Instruction Toolbar

Central Workspace

Themes Toolbar

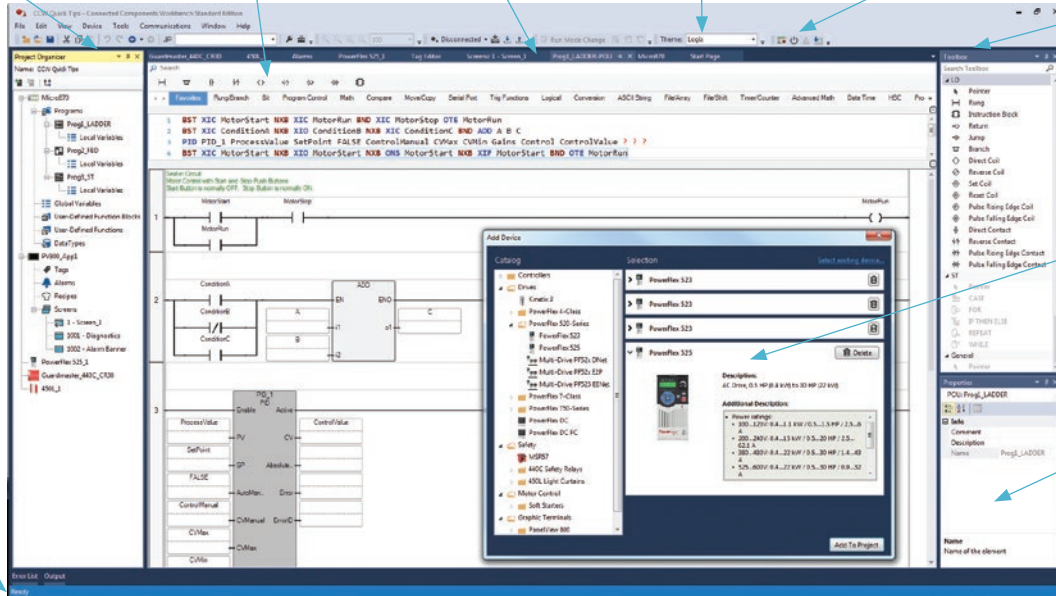
Micro800™ Simulator Toolbar

Instruction Toolbox

Add Device Selector

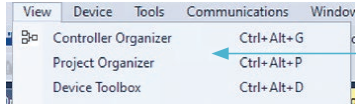
Properties Pane

Status Bar



Find out more at the
Connected Components Workbench™ software page
rok.auto/ccw

Organizer View



Choose between the Controller Organizer or Project Organizer view

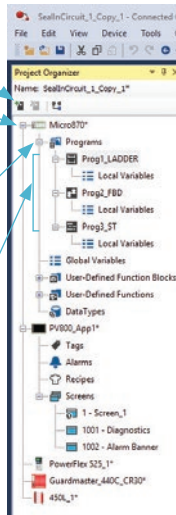
Project Organizer

Add Device Selector

Right-click and select Change Controller to switch between controller types

Right-click to add Structured Text, Ladder Diagram or Function Block Diagram

Drag-and-drop Programs to different positions in order to change the execution order



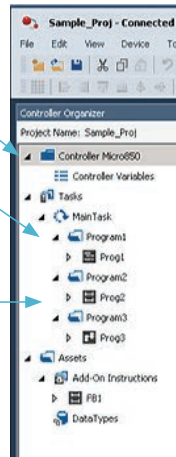
Controller Organizer

Available in Connected Components Workbench™ software version 13 or later

New organizer view for enhanced user experience

Right-click to add new Task, routines and interrupts

Program arrangements and edits are reflected in both views



Themes Toolbar



IEC theme for Ladder Editor
Logix theme for Ladder Editor

Micro800™ Simulator Toolbar

Start/Exit Simulator

Fault Status



Power On

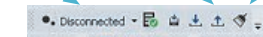
Sync Plug-in and Expansion I/O

Connection and Run Mode Change

Connect/Disconnect

Upload

Clean



Verify

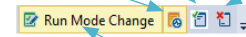
Build

Download

Test Logic

Accept

Discard

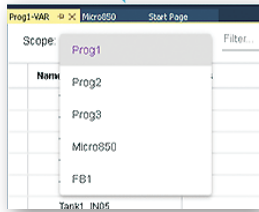


Start/Stop Run Mode Change

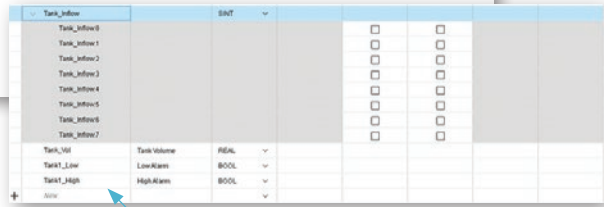
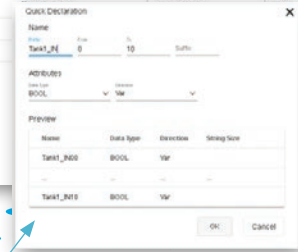
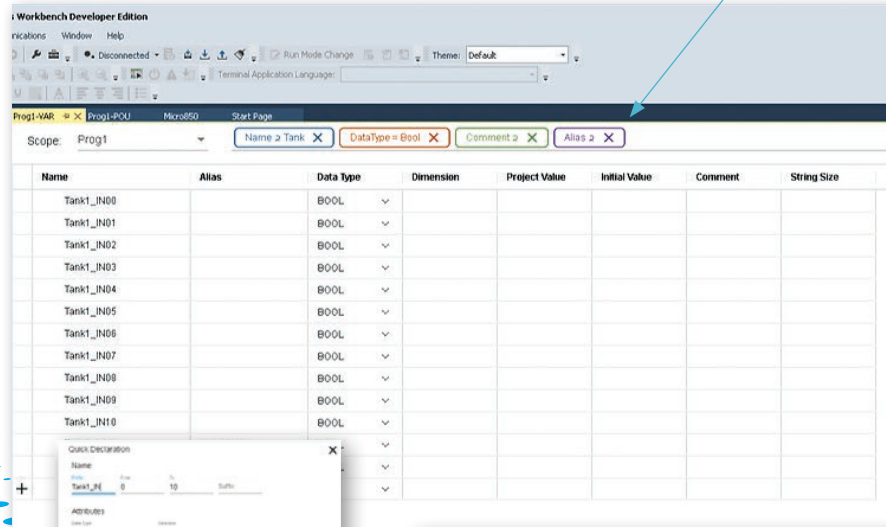
Data Grid

Available in Connected Components Workbench™ software version 13 or later

Switch between Local and Global Variable data grid



Find the right tags easily using Filters



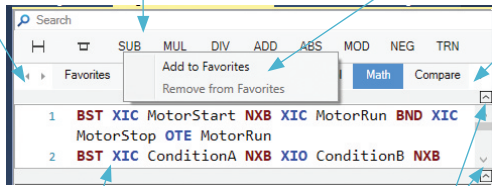
Create multiple tags in one click with Quick Declaration

Monitor individual status through Bit addressing for all integer-type variables

Ladder Diagram Editor

Instruction Toolbar

Scroll tabs
 Mouse over Instruction for description
 Right-click Instruction to Add to or Remove from Favorites

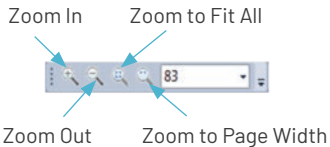


Click to show list of all Instruction Groups

Hit **TAB** key after entering Instruction name to auto-complete Branch Start (BST) and to auto-create Instruction Block instance names

Click to hide or unhide Instruction Toolbar or ASCII Text Input Pane

Zoom



- If toolbars are not visible, right-click on area where toolbars are to enable toolbars. From there, enable Zoom
- Zoom is also available by holding down **Ctrl** and using mouse wheel

Variables

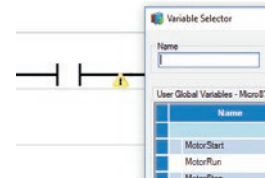
Single-click to select variables



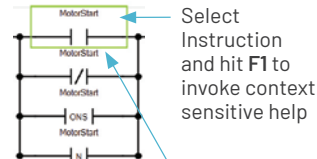
Double-click to declare new variable

Keyboard Shortcuts

Ctrl-R enables/disables Variable Selector after drag-and-drop of Instructions



Status Bar

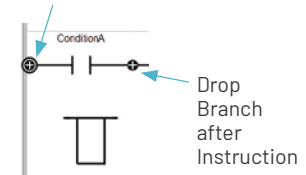


Select Instruction and hit **F1** to invoke context sensitive help

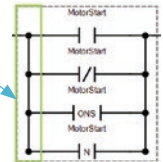
Select Contact or Coil and hit **SPACEBAR** to scroll through available types

Branching

Drop Branch around Instruction



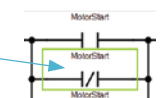
Whole Branch is selected



Single level of Branch selected



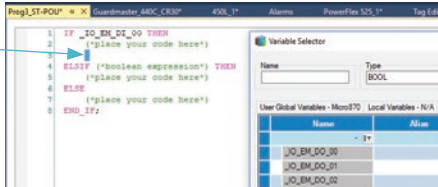
Only Instruction selected



Structured Text Editor

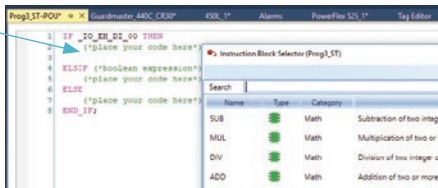
Variable Selector

Ctrl-I brings up the Variable Selector, so you can select a variable instead of typing it



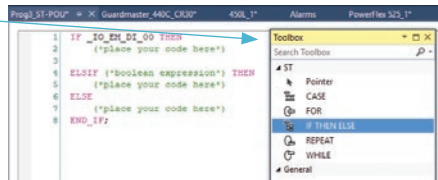
Instruction Block Selector

Ctrl-R brings up the Block Selector



Structured Text Editor Toolbox

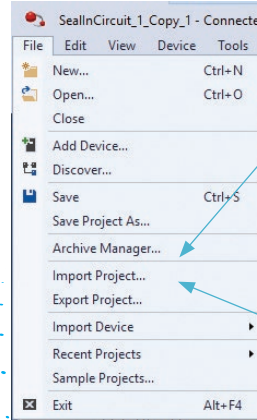
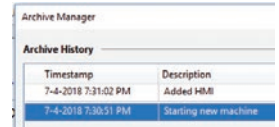
Drag-and-drop of language elements



Import/Export Project and Archive Manager

Archive Manager

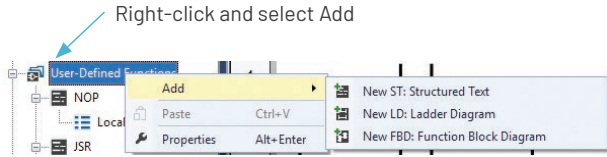
Create and delete archive
Requires Developer Edition



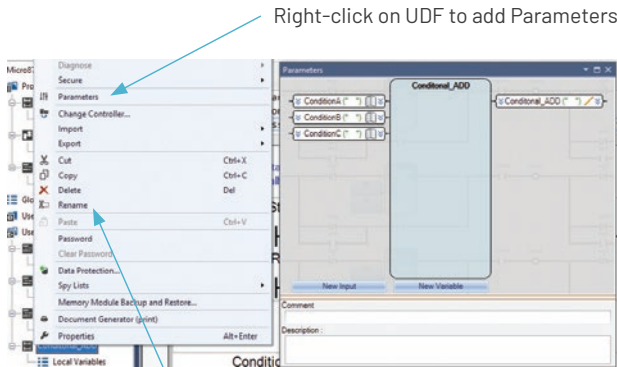
Import/Export Project

Import or Export the entire project including archives, as a CCWARC file type

User-defined Function (UDF) or User-defined Function Block (UDFB)



Right-click and select Add

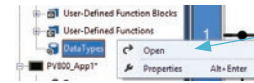


Right-click on UDF to add Parameters

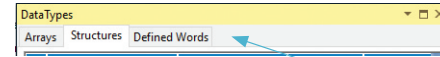
Right-click on UDF to Rename

User-defined Data Type (UDT)

Requires Developer Edition



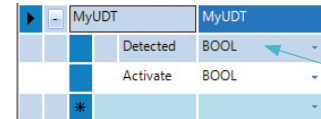
Right-click on Data Types and Open



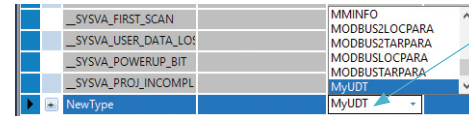
Select either user-defined Arrays, Structures, or Defined Words (constants)







For Structures, enter name of new Data Type



Enter each field



New Data Type will be available when a new variable is created

Connect with us.    

rockwellautomation.com ————— expanding human possibility™

AMERICAS: Rockwell Automation, 1201 South Second Street, Milwaukee, WI 53204-2496 USA, Tel: (1) 414.382.2000, Fax: (1) 414.382.4444
 EUROPE/MIDDLE EAST/AFRICA: Rockwell Automation NV, Pegasus Park, De Kleetlaan 12a, 1831 Diegem, Belgium, Tel: (32) 2 663 0600, Fax: (32) 2 663 0640
 ASIA PACIFIC: Rockwell Automation, Level 14, Core F, Cyberport 3, 100 Cyberport Road, Hong Kong, Tel: (852) 2887 4788, Fax: (852) 2508 1846

Allen-Bradley, Connected Components Workbench, expanding human possibility, FactoryTalk, Guardmaster, Kinetix, Micro800, Micro850, Micro870, PanelView, PowerFlex, Rockwell Automation and TechConnect are trademarks of Rockwell Automation, Inc. Trademarks not belonging to Rockwell Automation are property of their respective companies.