



Illuminator User's Manual

HI-0708



The Infrared Hybrid IR Illuminators

Contents

• Warning & Caution	3
• Components and Accessories & Overview	4
• Installation Procedures	4
• Declaration of Conformity	7

Specifications

- Angle of LEDs / 15° ~ 60°
- View Range / Up to 130m ~40m
- Wave Length / 850nm or 940nm
- Operating Temperture / -30 c ~ +60 c
- OPerating Humidity / 90%Rh
- IP Rate / IP67
- Power / DC12V 1.5A)
- Dimension / 112(W)x153.5(L)x65.5(H)mm
- Weight / 1kg

Declaration of Conformity

Equipment Type/Environment	ILLUMINATOR	
Model Name		
Date of purchasing	/	/ (MM/DD/YY)
Warranty period	5 years from the date of purchase	
Customer address	Name	
	Contact number	
Representative Name	Name	
	Address	

After Sales Service

This information is provided to ensure your safety and to prevent any losses, financial or otherwise. Please read it carefully and use the product accordingly.

- For product inquiries, please contact the retail shop where you bought the camera.
The using of equipment such as an aerial ladder while providing after-sales service shall be at your expense.
- Separate the power plug when thunder crashes or lighting flashes.
- This product is support equipment for surveillance system. Therefore, we can't compensate for material loss and/or personal injuries by robbery, fire, natural disaster or something like this type. There are many cases that the malfunction caused by inexperienced user and it is easy to fix the trouble by reading the trouble shooting only.

How to request after sales service?

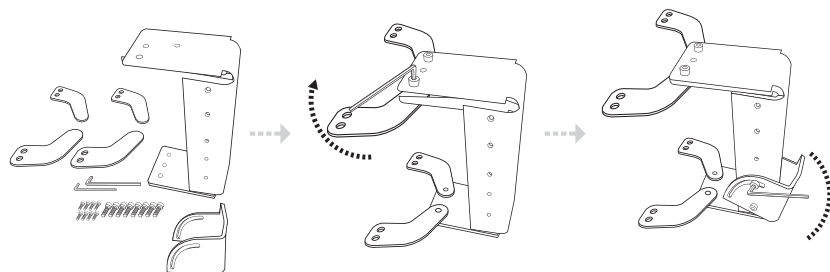
1. Submit the defective model number
2. Submit the Warranty card along with defective product to classify the gratuitous repair and repair with compensation

Followings are the cases of repair with cost

- 1) Malfunction caused by user's fault
- 2) Irregular power connection
- 3) Disassemble, repair by unprofessional user
- 4) Loss by robbery, fire, natural disaster or something like this type.
- 5) Replacement of consumption goods

Installation

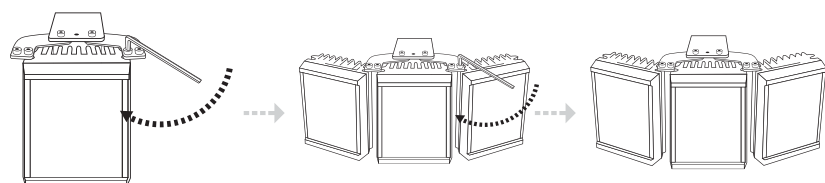
- Connection of 3 units with bracket _Optional



- Components
- JOINT BRACKET : 4EA
 - MIDDLE BRACKET : 1EA
 - WALL MOUNT BRACKET : 1EA
 - M6 BOLT : 8EA
 - M8 BOLT : 8EA
 - L WRENCH : 2EA

- Connect 4pcs of JOINT BRACKETS to MIDDLE BRACKET with M6 BOLT.

- Connect MIDDLE BRACKET to WALL MOUNT BRACKET with M6 BOLT.
- Depending on the user's convenience, middle, and bottom connections allowed.
- Control the angle with WALL MOUNT BRACKET



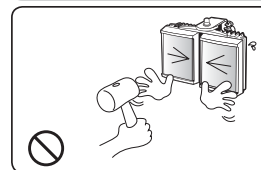
- Connect the product on both sides of the unit to joint bracket using M8 bolt.

- Connect 3units products to Joint Bracket using M8 BOLT.

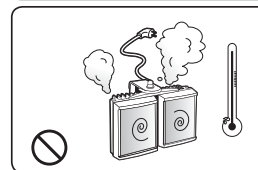
- Complete connection.
- It is possible to control the angle between products.

Warning ⚠

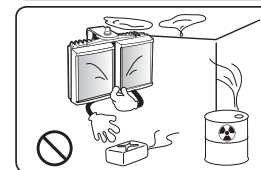
Private installation is restricted.
The user should request installation to a specialist in a local agency to avoid any type of accident during and after installation.



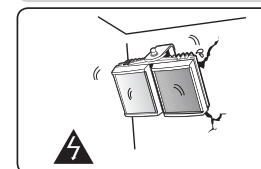
Turn off the unit when smoke or unusual heat is found while using this product and contact local agency. This symptom might cause fire.



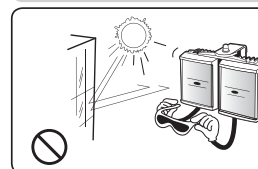
Do not place the unit where moist, oil or gas is exposed to avoid malfunction or electric shock.



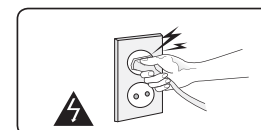
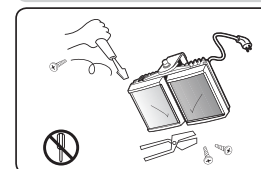
Do not install the unit on soft material to avoid dropping down from the wall.



Do not install the unit toward deflection of sunlight to avoid malfunction or defective image.



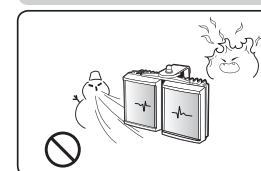
Do not disassemble or put in alien substance into the unit.
It might cause malfunction or fire.



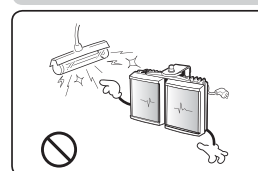
Do not hold the power plug with wet hand.
It might cause electric shock

Precaution ⚠

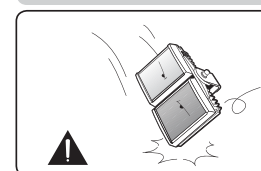
Do not install under extreme temperature conditions.



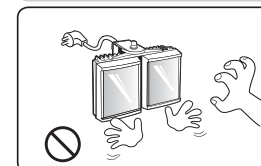
Do not install under unstable lighting conditions.



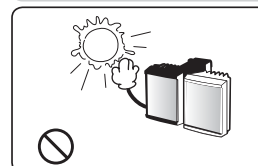
Do not drop the illuminator or subject it to physical shock.



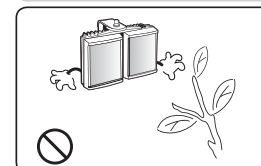
Do not touch the illuminator lens.



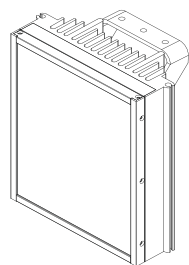
Never keep the illuminator face to strong light directly.



Do not put obstacle in front of product.



Components and Accessories



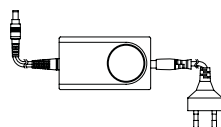
① EDS-IR1



② 1/4" - 20UNC Bolt (3EA)



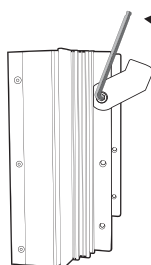
③ Hexagon Wrench (1EA)



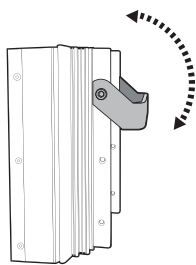
④ Adaptor (optional)

Installation

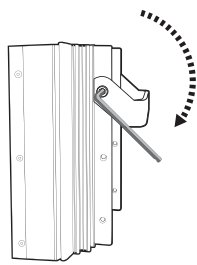
- Connection 1 unit to bracket _standard type



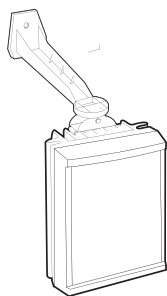
► Release 2EA rear bracket bolt, using Hexagon wrench which is supplied.



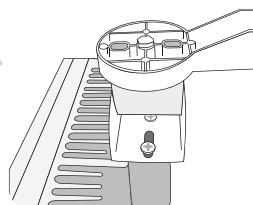
► Adjust rear bracket to the desired angle.



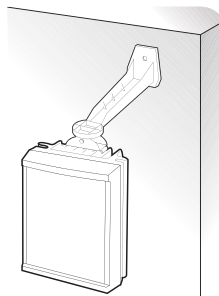
► Fix the rear bracket by tightening 2EA bolt, using the supplied Hexagon Wrench.



► Fix 1 / 4" - 20UNC bolt to bracket, using the supplied screwdriver.



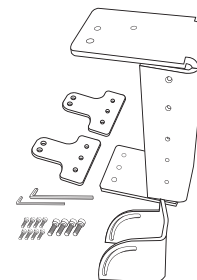
► Fix all the 1 / 4" - 20UNC Bolt (3EA).



► As the above methods, fix it by adjusting the desired position and angle.

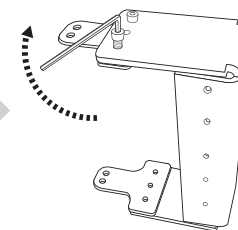
Installation

- Connection of 2 units with bracket _Optional

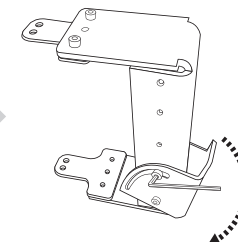


► Components

- JOINT BRACKET : 2EA
- MIDDLE BRACKET : 1EA
- WALL MOUNT BRACKET : 1EA
- M6 BOLT : 8EA
- M8 BOLT : 4EA
- L WRENCH : 2EA

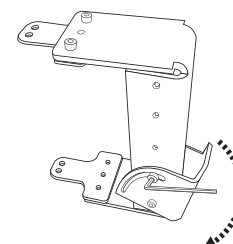


► Connect 2pcs of JOINT BRACKETS to MIDDLE BRACKET with M6 BOLT.

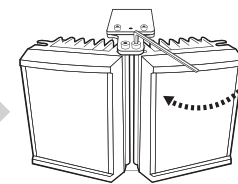


► Connect MIDDLE BRACKET to WALL MOUNT BRACKET with M6 BOLT.

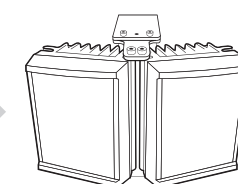
► Depending on the user's convenience, middle, and bottom connections allowed.



► Control the angle with WALL MOUNT BRACKET



► Connect the product on both sides of the unit to joint bracket using M8 bolt.



► Complete connection.
► It is possible to control the angle between products.