

# USB & Ethernet Controlled Mechanical Switch System (3 x SPDT)

# ZT-317

50Ω DC to 18 GHz



## Typical Applications

- 5G node / device testing
- Automated test equipment
- Fail-safe / redundancy switching



## Product Overview

ZT-317 is a flexible switch rack, configured with 3 independent mechanical SPDT switches on the rear panel. Each switch is of a high reliability, fail-safe design, operating from DC to 18 GHz with low loss and high isolation. The model is housed in a compact 1U height, 19-inch rack chassis with N-type RF connectors on the rear panel.

The switches are controlled via USB or Ethernet, allowing control directly from a PC, or remotely over a network. Full software support is provided, including our user-friendly GUI application for Windows and a full API with programming instructions for Windows and Linux environments (both 32-bit and 64-bit systems).

## Electrical Specifications @ 25°C (per Switch)

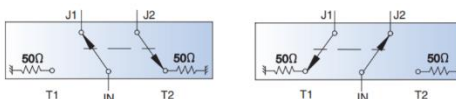
Parameter	Conditions	Min	Typ	Max	Units
Frequency		DC		18	GHz
Path Loss	DC – 6 GHz		0.50	0.65	dB
	6 – 12 GHz		0.75	1.00	
	12 – 18 GHz		1.10	1.40	
Isolation	DC – 6 GHz	85	100		dB
	6 – 12 GHz	80	90		
	12 – 18 GHz	65	75		
Return Loss	DC – 6 GHz		20		dB
	6 – 12 GHz		15		
	12 – 18 GHz		12		
Switching Time			25		ms
RF Input Power (Cold Switching) <sup>1</sup>	DC – 12 GHz			20	W
Switch Lifetime (per Switch)	100 mW hot switching <sup>2</sup>	10			million cycles
	1W hot switching		1		

1. Maximum power into any internal termination is 1W

2. Hot switching powers above this level will degrade the switch lifetime

### Switch Configuration:

- Fail-safe
- Absorptive



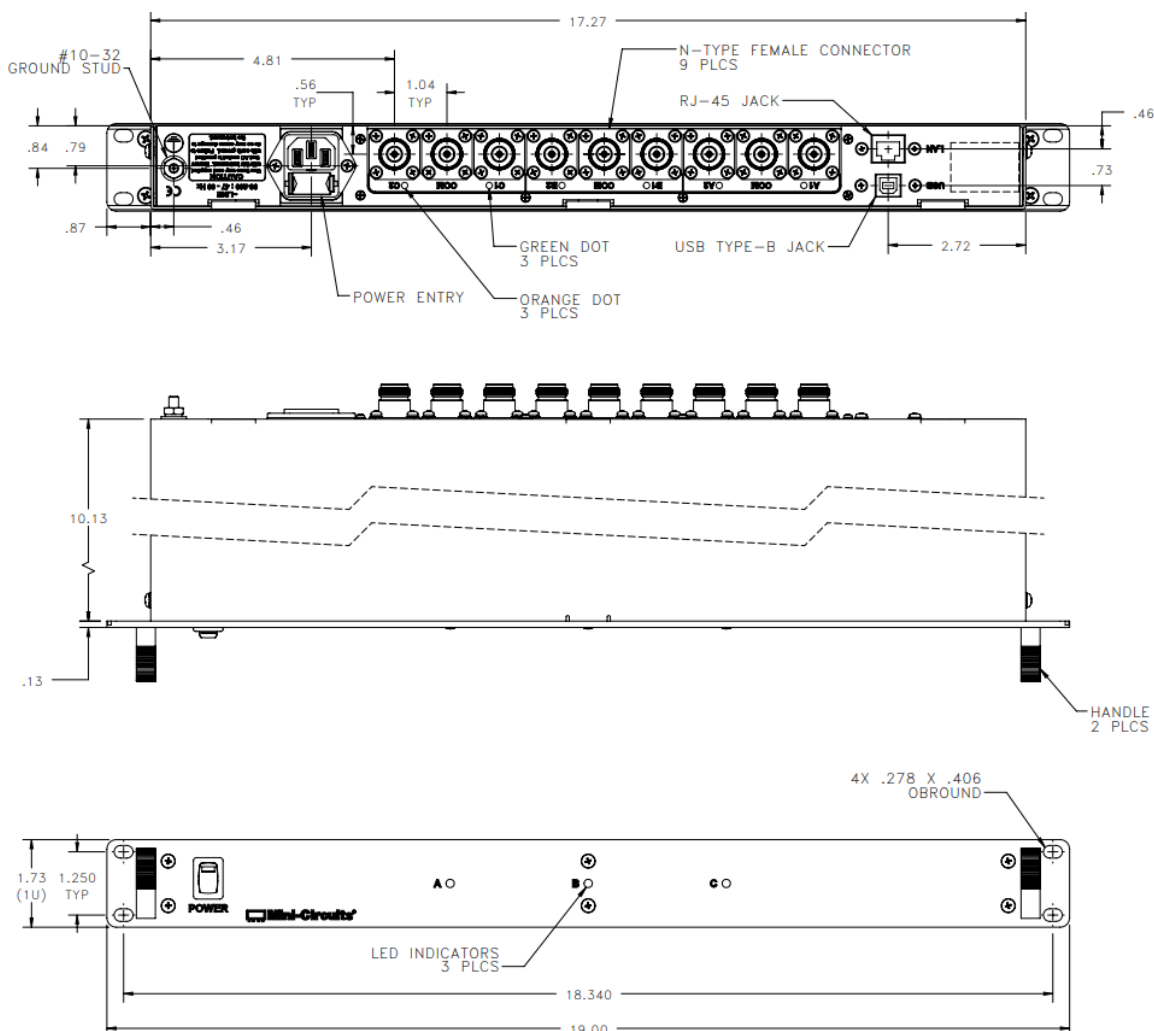
# USB & Ethernet Controlled Mechanical Switch System (3 x SPDT)

**ZT-317**

## Mechanical / Environmental Specifications

<b>Dimensions</b>	19" (w) x 1U (h) x 10" (d); mounting feet add 0.5" height
<b>Case Material</b>	Aluminum (with protective coatings to prevent corrosion)
<b>Case Drawing</b>	99-01-3004
<b>RF Connectors</b>	N-type female
<b>Front Panel</b>	a) Power ON/OFF switch with indicator light b) LED switch position indicators
<b>Rear Panel</b>	a) All RF ports b) AC mains power input (IEC C14 inlet) c) USB & RJ45 control connections d) Cooling fan vents
<b>Control Interface</b>	USB and Ethernet TCP/IP supporting HTTP and TELNET protocols
<b>Power Supply</b>	AC mains power input (90-260 V, 47-63 Hz) with 2A, 250V fuse rating
<b>Operating Temperature</b>	0° to +50° C

## Case Drawing



# USB & Ethernet Controlled Mechanical Switch System (3 x SPDT)

# ZT-317

## Software Specifications

### Software & Documentation Download:

- Mini-Circuits' full software and support package including user guide, Windows GUI, DLL files, programming manual and examples can be downloaded free of charge from:  
<https://www.minicircuits.com/softwaredownload/rfswitchcontroller.html>
- Please contact [testsolutions@minicircuits.com](mailto:testsolutions@minicircuits.com) for support

### Minimum System Requirements:

Parameter	Requirements	
Interface	USB HID & Ethernet (HTTP & Telnet)	
System Requirements	GUI	Windows 98 or later
	USB API DLL	Windows 98 or later and programming environment with ActiveX or .NET support
	USB Direct Programming	Linux; Windows 98 or later
	Ethernet	Windows, Linux or Mac computer with a network port and Ethernet TCP / IP support
Hardware	Pentium II or later with 256 MB RAM	

### Application Programming Interface (API)

#### Ethernet Support:

- Simple ASCII / SCPI command set for switch & attenuator control
- Communication via HTTP or Telnet
- Supported by most common programming environments

#### USB Support (Windows):

- ActiveX COM DLL file for creation of 32-bit programs
- .NET library DLL file for creation of 32 / 64-bit programs
- Supported by most common programming environments (refer to application note [AN-49-001](#) for summary of supported environments)

#### USB Support (Linux):

- Direct USB programming using a series of USB interrupt codes

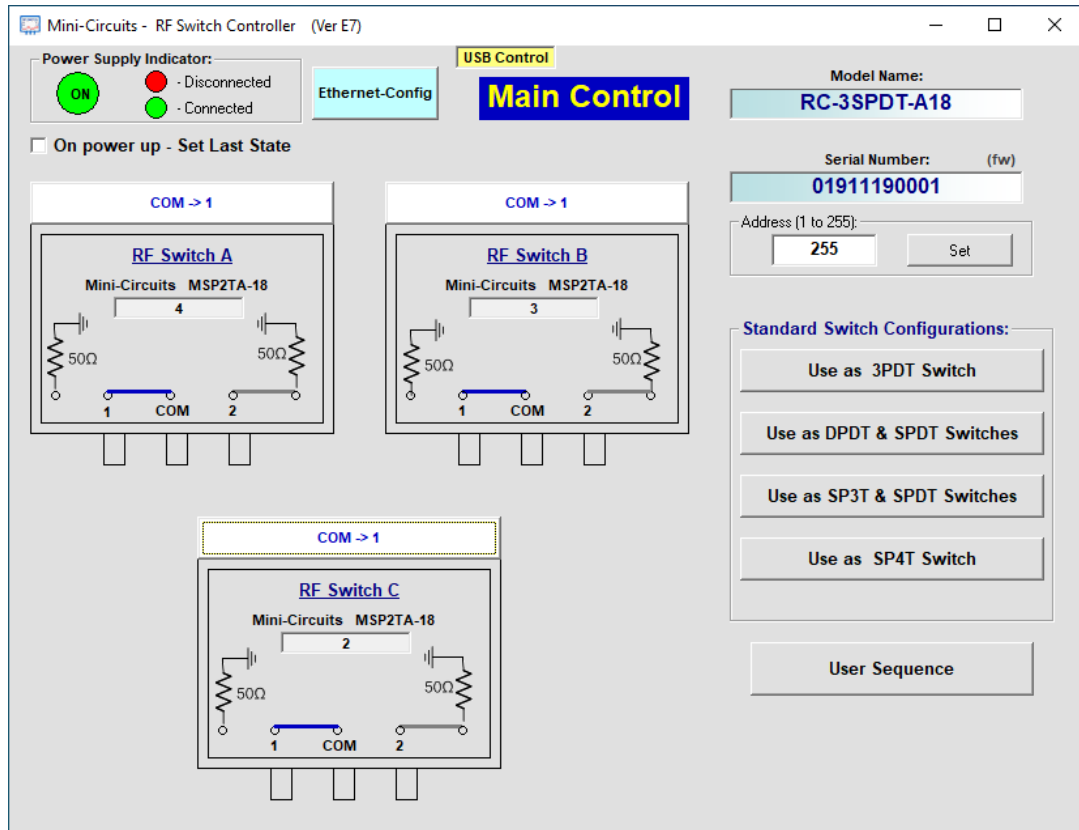
Full programming instructions and examples available for a wide range of programming environments / languages.

# USB & Ethernet Controlled Mechanical Switch System (3 x SPDT)

## ZT-317

### Graphical User Interface (GUI) for Windows - Key Features

- Connect via USB or Ethernet
- Run GUI in demo mode to preview functionality without hardware
- View and set all switch states at the click of a button
- View system status
- Configure user profiles to label switches and control access
- Send programmatic commands
- Configure Ethernet IP settings



# USB & Ethernet Controlled Mechanical Switch System (3 x SPDT)

# ZT-317

## Ordering Information

Please contact Mini-Circuits' Test Solutions department for price and availability:

[testsolutions@minicircuits.com](mailto:testsolutions@minicircuits.com)

## Included Accessories

Model Name	Quantity	Description
CBL-3W-xx*	1	AC power cord (IEC C13 connector to local plug)
USB-CBL-AB-7+	1	USB cable (6.8 ft)
CBL-RJ45-MM-5+	1	Ethernet cable (5 ft)
HT-4-SMA	1	SMA Cable Wrench (4 in)
B13-67-11+	2	Rear safety block
B18-DD-125+	4	Pan-head screw

Cable Model	Region
CBL-3W-US	USA
CBL-3W-EU	Europe
CBL-3W-IL	Israel
CBL-3W-UK	UK
CBL-3W-AU	Australia / China

\*Please specify one option on the purchase order, at no charge

### Additional Notes

- Performance and quality attributes and conditions not expressly stated in this specification document are intended to be excluded and do not form a part of this specification document.
- Electrical specifications and performance data contained in this specification document are based on Mini-Circuit's applicable established test performance criteria and measurement instructions.
- The parts covered by this specification document are subject to Mini-Circuits standard limited warranty and terms and conditions (collectively, "Standard Terms"); Purchasers of this part are entitled to the rights and benefits contained therein. For a full statement of the Standard Terms and the exclusive rights and remedies thereunder, please visit Mini-Circuits' website at [www.minicircuits.com/MCLStore/terms.jsp](http://www.minicircuits.com/MCLStore/terms.jsp)

