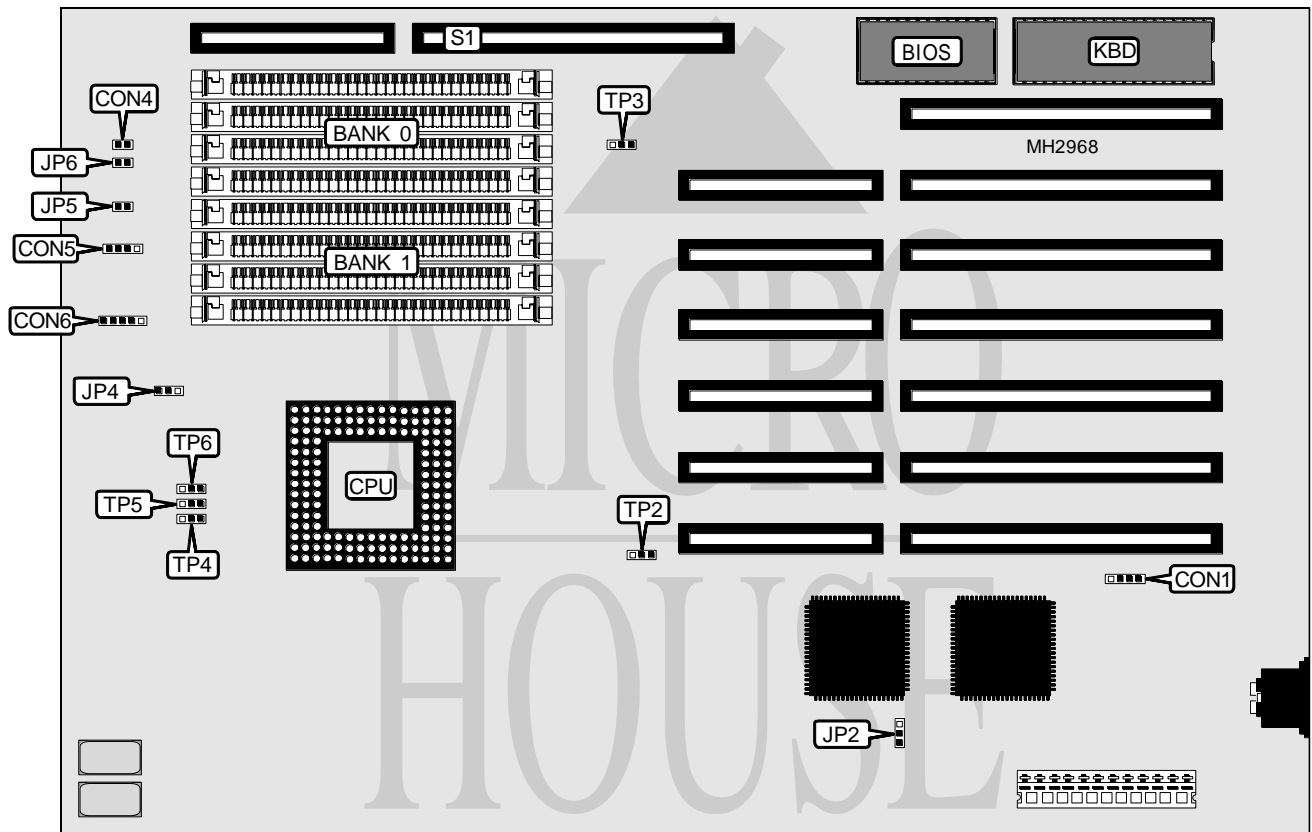


AQUARIUS SYSTEMS, INC.

AS I - 4 8 6 T

Processor	80486SX
Processor Speed	25/33MHz
Chip Set	Intel
Max. Onboard DRAM	64MB
Cache	64/128/256KB (on external memory card)
BIOS	Unidentified
Dimensions	330mm x 218mm
I/O Options	External memory card
NPU Options	None



CONNECTIONS			
Purpose	Location	Purpose	Location
External battery	CON1	Turbo LED	JP5
Reset switch	CON4	Turbo switch	JP6
Speaker	CON5	External memory card connector	S1
Power LED & keylock	CON6		

Continued on next page. . .

AQUARIUS SYSTEMS, INC.

ASI-486T

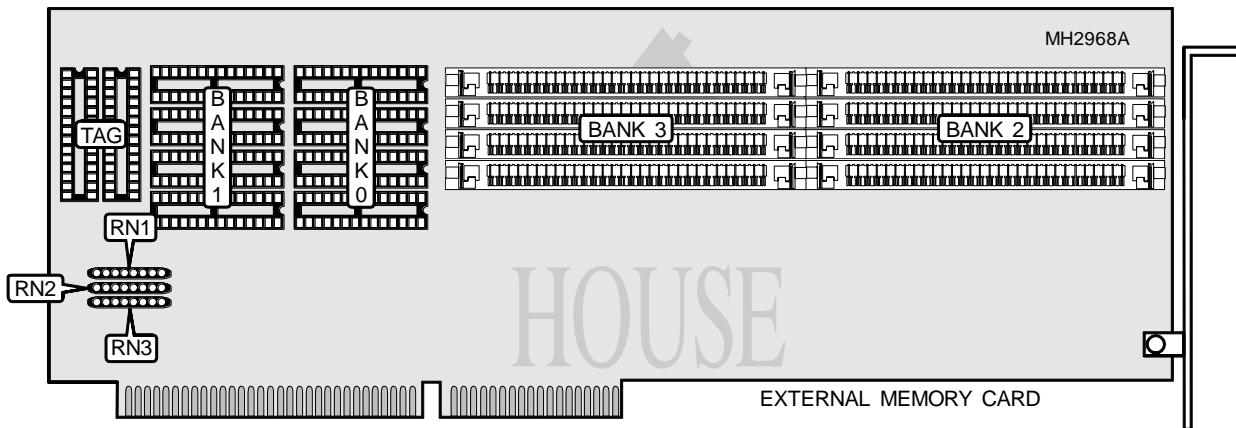
... continued from previous page

USER CONFIGURABLE SETTINGS		
Function	Jumper	Position
í Power good signal detect from power supply	JP2	pins 1 & 2 closed
Power good signal detect from board	JP2	pins 2 & 3 closed
í Factory configured - do not alter	TP2	pins 1 & 2 closed
í Factory configured - do not alter	TP3	pins 1 & 2 closed
í Factory configured - do not alter	TP4	pins 1 & 2 closed
í Factory configured - do not alter	TP5	pins 1 & 2 closed
í Factory configured - do not alter	TP6	pins 1 & 2 closed

DRAM CONFIGURATION				
Size	Bank 0	Bank 1	Bank 2	Bank 3
1MB	(4) 256K x 9	NONE	NONE	NONE
2MB	(4) 256K x 9	(4) 256K x 9	NONE	NONE
3MB	(4) 256K x 9	(4) 256K x 9	(4) 256K x 9	NONE
4MB	(4) 256K x 9	(4) 256K x 9	(4) 256K x 9	(4) 256K x 9
4MB	(4) 1M x 9	NONE	NONE	NONE
8MB	(4) 1M x 9	(4) 1M x 9	NONE	NONE
12MB	(4) 1M x 9	(4) 1M x 9	(4) 1M x 9	NONE
16MB	(4) 1M x 9	(4) 1M x 9	(4) 1M x 9	(4) 1M x 9
16MB	(4) 4M x 9	NONE	NONE	NONE
32MB	(4) 4M x 9	(4) 4M x 9	NONE	NONE
48MB	(4) 4M x 9	(4) 4M x 9	(4) 4M x 9	NONE
64MB	(4) 4M x 9	(4) 4M x 9	(4) 4M x 9	(4) 4M x 9

Note: Bank 2 and Bank 3 are located on the external memory card.

CPU SPEED CONFIGURATION	
Speed	JP4
25MHz	pins 1 & 2 closed
33MHz	pins 2 & 3 closed



Continued on next page...

AQUARIUS SYSTEMS, INC.
 ASI-486T

... continued from previous page

CACHE CONFIGURATION			
Size	Bank 0	Bank 1	TAG
64KB	(4) 8K x 8	(4) 8K x 8	(2) 16K x 4
128KB	(4) 32K x 8	NONE	(2) 64K x 4
256KB	(4) 32K x 8	(4) 32K x 8	(2) 64K x 4

CACHE RESISTER CONFIGURATION			
Size	RN1	RN2	RN3
64KB	Installed	Not installed	Not installed
128KB	Not installed	Installed	Not installed
256KB	Not installed	Not installed	Installed