



# C3A+W2D

HD 1080p Wire-Free Security Kit

## Security Has Never Been This Easy

With a long-lasting 5,500 mAh rechargeable battery and 100% wire-free design, the standalone C3A can be placed anywhere you need it to go. With the help of the W2D, battery life lasts even longer.



# C3A

100% Wire-Free, Battery-Powered Camera



PIR Motion Detection

**FHD** 1080p



5500 mAh Rechargeable  
Lithium Battery



Two-Way Talk



125° Diagonal  
Field of View



IP65 Dust and  
Water Protection



Night Vision  
Up to 25 ft. (7.5 m)



2.4GHz



Supports MicroSD Card  
(Up to 128GB)

# W2D

Base Station for the C3A



Supports up to six C3A units



Prolongs battery life of connected C3A



Supports 100-decibel siren



## Hassle-Free, Effortless Security

---

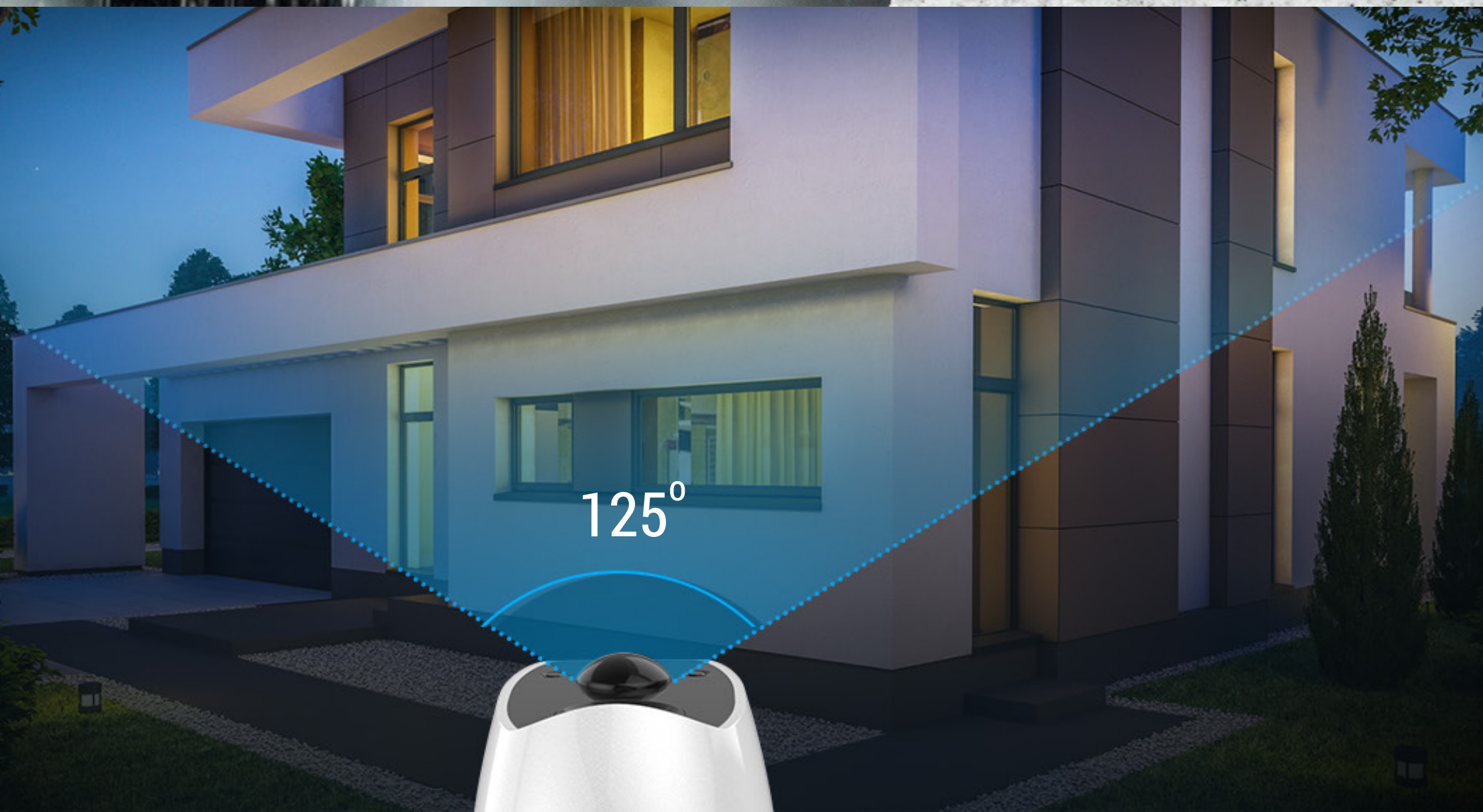
Use the C3A to monitor anywhere – whether indoors or out, or even in places without power outlets. Thanks to its wireless, battery powered and weatherproof design, the options are limitless!



## Watches Over What Matters Most, Day and Night

---

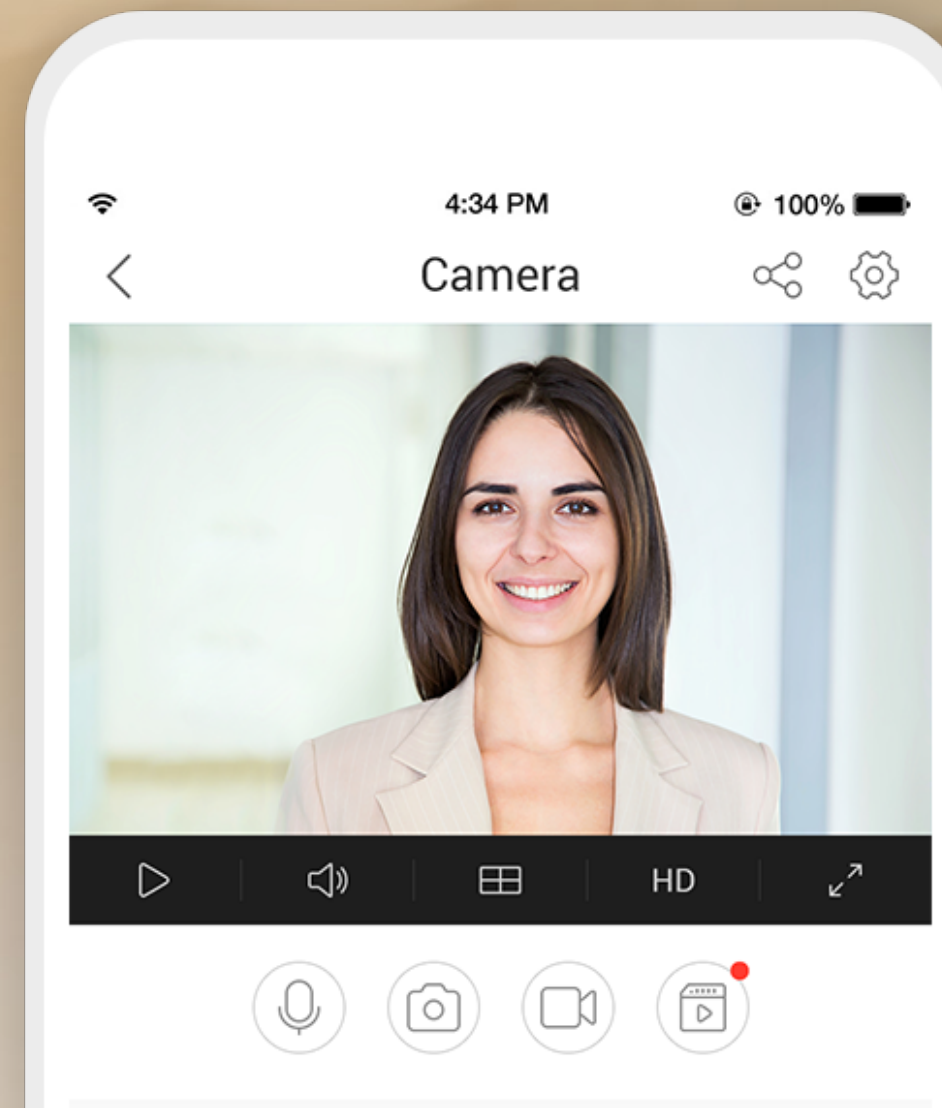
The C3A lets you see wide-angle, Full HD images. Its night vision also ensures 24/7 protection even when it's dark outside.





## Two-Way Talk Secures Your Home

Speak with visitors and hear what's happening anywhere and at any time using your smartphone.



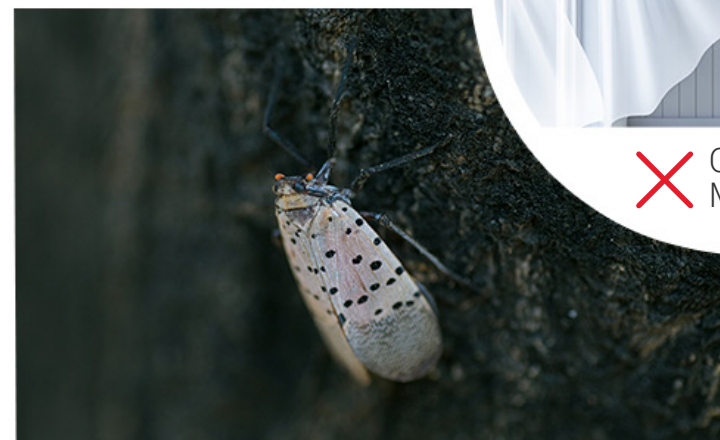
## Extra Protection with Accurate Detection

The C3A's passive infrared (PIR) motion detection feature sends you an instant alert with images and videos captured when a visitor approaches. Once you connect the C3A with the W2D, the W2D will even emit a 100-decibel siren when triggered, reminding you to check on what's happening.

✓ Pet Movement



✓ Human Movement



✗ Insect Movement



✗ Lighting Changes



## Worry Less with Longer Battery Life

The C3A equips with a removable and rechargeable 5,500 mAh Lithium battery. Paired with the W2D, the C3A's battery life can last even longer.



## Easy Pairing

With one-click sync buttons, the C3A and W2D will pair in seconds.



USB Charging



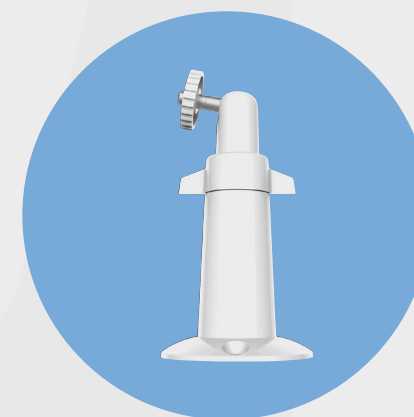
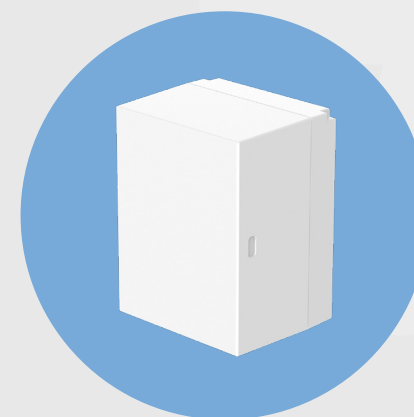
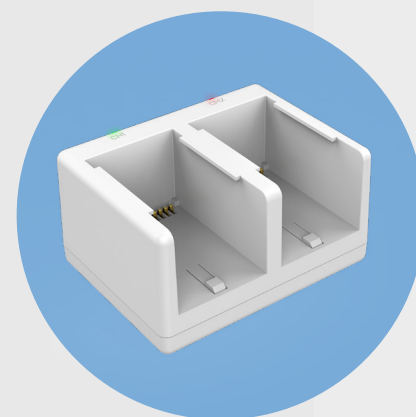
Removable Battery



Easy Pairing

## Comprehensive Accessories to Choose From

A wide range of accessories are also available to enhance your experience, including a charging station, rechargeable battery and mounting bracket for long-lasting protection and good usability.



# Multiple Storage Solutions

---

Save your recordings with flexible and secured solutions. The C3A comes with a built-in MicroSD card slot that can store up to 128 GB of recorded footage. You can also save your images to EZVIZ Cloud for additional back-up

(Cloud storage service is only available in certain markets. Please verify the availability before making any purchase.)



Supports MicroSD Card



Encrypted Cloud Storage

# Specifications C3A Model C3A

## System Parameters

Processor	High-Performance Embedded SOC Processor
Operation System	Embedded RTOS

## Camera Parameters

Sensor	1/4" 2-Megapixel sensor
Lens	2.2mm@F2.4
Field of View	Diagonal FOV 125°
Night Vision	Up to 25 ft.

## Video Parameters

Compression Standard	Smart H.264
Max. Resolution	1920 × 1080, FHD
Frame Rate	Max. 15fps Adaptive frame rate of network transmission
DNR	3D DNR
WDR	DWDR
BLC	Supports

## Audio Parameters

Audio Input	Built-in Omni-direction microphone
Audio Output	Built-in loudspeaker
Audio Quality	Noise suppression

## Network Parameters And Storage

Wireless	Built-in 2.4 GHz Wi-Fi
Network Configuration	AP Pairing
Minimum Network Requirements	2 Mbps
Local Storage	Support microSD card (Up to 128 GB)
Cloud Storage	EZVIZ Cloud Storage

## Event

Sensor	PIR Motion Sensor
Alarm	Customized Alert Area
Siren	N/A

## General

Power Supply	5500 mAh Rechargeable Lithium Battery and 5V DC
Power Consumption	Max. 5W
Weatherproof	IP65
Product Dimensions (mm)	56.08 x 70.02 x 92.09
Packaging Dimensions (mm)	118.5 x 130 x 215
Weight (g)	215g

## Network Interface

1 RJ-45 10/100Mbps Self-adaptive Ethernet WAN interface.

## Minimum Network Environment

2Mbps

## Wireless Interface

Supports 2.4G connection. The actual available channels vary according to the sales area regulations. Theoretical maximum rate is 144M at 802.11b/g/n. Supports Sub-1G connection with Low-Power Private Protocol. Working Band of 433M/868M/915M and available channels vary according to the sales area regulations.

## Battery Camera

Supports up to 6 Wire-Free Cameras

## CPU

Qualcomm @ 650 MHz (Maximum)

## RAM

128MB

## Flash

16 MB

## Alarm Siren

Supported

## Antenna

2.4G: 2 internal @ 2dB max. Sub-1G: 1 internal.

## Indicator

One System LED. One WAN Port LED.

## Button

One SYNC button. One Power button. One Reset button, hold 10 seconds to RESET.

## General

Power	DC 5V 2A, typical power consumption < 10watts The adapter supports a wide voltage range, expected 100V~240V
Product Dimensions (mm)	95 x 95 x 110
Packaging Dimensions (mm)	119.5 x 130 x 215
Weight	180g



# Package Contents:

## **C3A**

- Camera
- Battery
- Magnetic Mount
- 3.3-Foot (1-Meter) USB Cable
- Power Adapter
- Screw Kit
- Quick Start Guide

## **W2D**

- Base
- 5-Foot (1.5-Meter) USB Cable
- Power Adapter
- Ethernet
- Quick Start Guide

# Requirements

## **C3A**

- Operating Conditions: -4 - 113°F (-20 - 45°C), Humidity 95% or less

## **W2D**

- Operating Conditions: 32 - 104°F (0 - 40°C), Humidity 10%-90%

# Certificates

## **C3A**

- CE / FCC / UL

## **W2D**

- FCC / UL

Specifications are subject to change without notice. "EZVIZ", "EZVIZ" and other EZVIZ's trademarks and logos are the properties of EZVIZ in various jurisdictions. Other brands and product names are trademarks or registered trademarks of their respective holders.

<https://www.ezvizlife.com/>