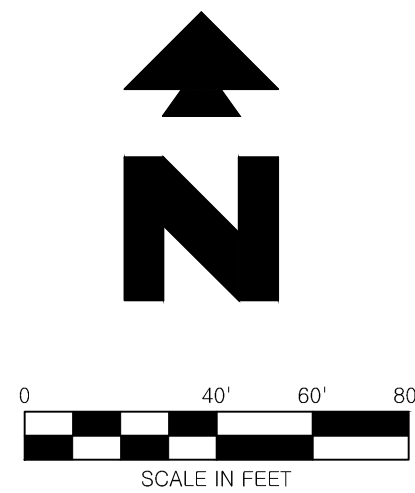
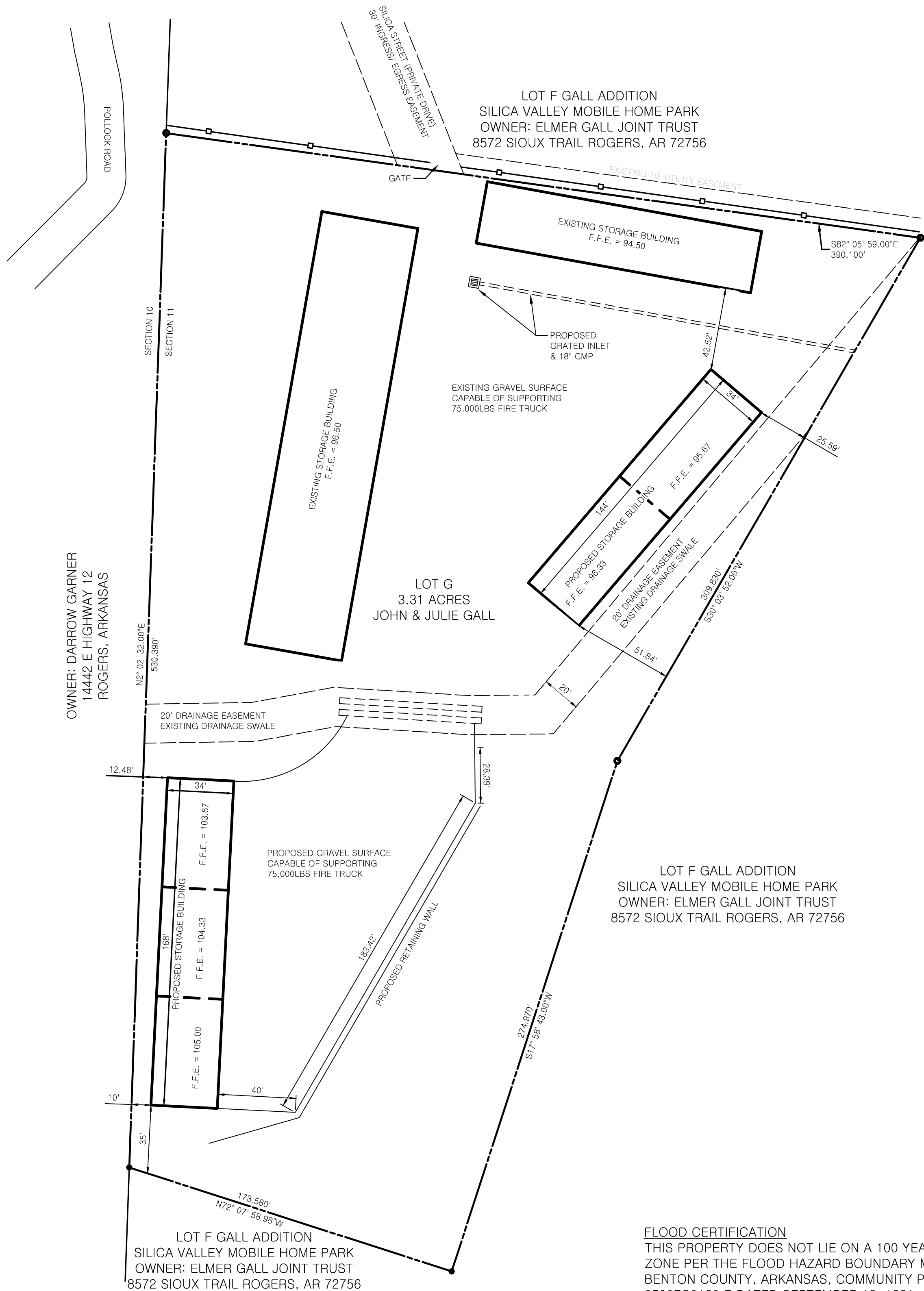


JOB # 9300 DRAWING: Prairie Creek-Site.dwg LAST SAVED BY: REVITTS

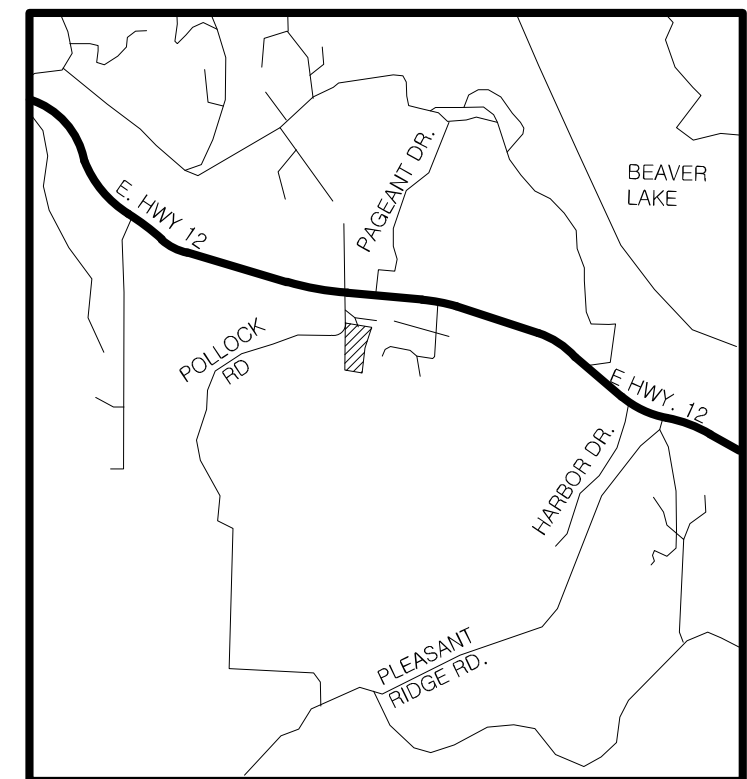


LEGEND

EXISTING	
	FOUND IRON PIN
	SET IRON PIN
	PROPERTY LINE
	PROPERTY LINE
	EASEMENT
	PROPOSED CONTOUR
	STORM DRAIN



Know what's below.
Call before you dig.



Not to Scale

SITE DATA

EXISTING BUILDING AREA	16,000 SQ FT
PROPOSED BUILDING AREA (DISTURBED AREA 0.48 ACRES)	10,608 SQ FT
TOTAL AREA OF SITE	144,140 SQ FT / 3.31 ACRES
SITE USE: RV / BOAT STORAGE	

BENTON COUNTY PLANNING COMMISSION ACCEPTANCE
APPROVED AND RECOMMEND FOR ACCEPTANCE BY THE
BENTON COUNTY PLANNING COMMISSION OF BENTON
COUNTY, ARKANSAS, THIS _____ DAY OF _____, 2015.

CHAIRMAN

PROPERTY DESCRIPTION
LOT G OF GALL ADDITION IN BENTON
COUNTY, ARKANSAS FILED: 2005 682

PARCEL # 15-1711-000

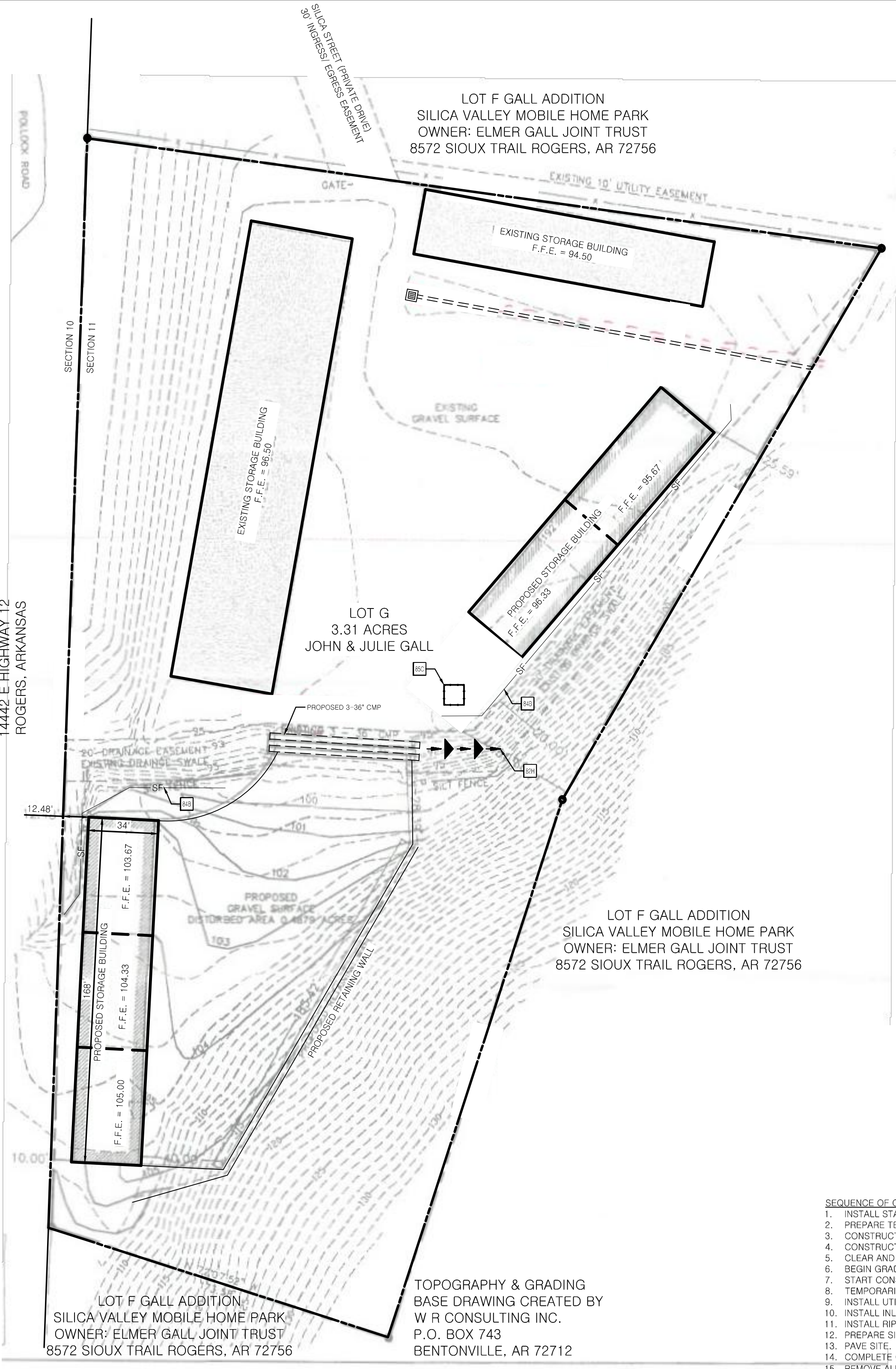
LOT F GALL ADDITION
SILICA VALLEY MOBILE HOME PARK
OWNER: ELMER GALL JOINT TRUST
8572 SIOUX TRAIL ROGERS, AR 72756

FLOOD CERTIFICATION
THIS PROPERTY DOES NOT LIE ON A 100 YEAR FLOOD
ZONE PER THE FLOOD HAZARD BOUNDARY MAP.
BENTON COUNTY, ARKANSAS, COMMUNITY PANEL
05007C0160 E DATED SEPTEMBER 18, 1991.

9300	8/19/15	TCO	TCO	RYE	RYE
CEI PROJECT NO.	INITIAL DATE	DPOR	PM	DES	DRW
Engineering Associates, Inc.					
ENGINEERS • PLANNERS • SURVEYORS LANDSCAPE ARCHITECTS • ENVIRONMENTAL SCIENTISTS					
3108 S.W. REGENCY PARKWAY, SUITE 2 Bentonville, AR 72712					
(479)273-9472 FAX (479)273-0844					
SILICA VALLEY RV/BOAT STORAGE					
15206 SILICA ST. ROGERS ARKANSAS, 72756					
SITE PLAN				REV DATE 8/19/15 REV-0	SHEET NO. 1 OF 3

© 2015 CEI ENGINEERING ASSOCIATES, INC.

OWNER: DARROW GARNER
14442 E HIGHWAY 12
ROGERS, ARKANSAS



TOPOGRAPHY & GRADING
BASE DRAWING CREATED BY
W R CONSULTING INC.
P.O. BOX 743
BENTONVILLE, AR 72712

- SEQUENCE OF CONSTRUCTION (JOB SPECIFIC): EXAMPLE
1. INSTALL STABILIZED CONSTRUCTION ENTRANCES.
 2. PREPARE TEMPORARY PARKING AND STORAGE AREA.
 3. CONSTRUCT THE SILT FENCES ON THE SITE.
 4. CONSTRUCT THE TEMPORARY SEDIMENTATION AND SEDIMENT TRAP BASINS.
 5. CLEAR AND GRUB THE SITE.
 6. BEGIN GRADING THE SITE.
 7. START CONSTRUCTION OF BUILDING PAD AND STRUCTURES.
 8. TEMPORARILY SEED DENUDED AREAS.
 9. INSTALL UTILITIES, UNDERDRAINS, STORM SEWERS, CURBS AND GUTTERS.
 10. INSTALL INLET PROTECTION DEVICES.
 11. INSTALL RIP RAP AROUND OUTLET STRUCTURES.
 12. PREPARE SITE FOR PAVING.
 13. PAVE SITE.
 14. COMPLETE GRADING AND INSTALL PERMANENT SEEDING AND PLANTING.
 15. REMOVE ALL TEMPORARY EROSION AND SEDIMENT CONTROL DEVICES (ONLY IF SITE IS STABILIZED).

LEGEND

EXISTING

- FOUND IRON PIN
- SET IRON PIN
- PROPERTY LINE
- PROPERTY LINE
- EASEMENT
- PROPOSED CONTOUR
- STORM DRAIN

PROPOSED

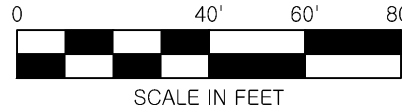
- PROPERTY LINE/RIGHT OF WAY LINE
- SILT FENCE
- CONTOUR ELEVATIONS

SITE DETAILS

- 82H ROCK CHECK DAM
- 84B TEMPORARY SILT FENCE BARRIER
- 85C TEMPORARY CONCRETE WASHOUT

GENERAL EROSION NOTES

- ALL CONTRACTORS AND SUBCONTRACTORS INVOLVED WITH STORM WATER POLLUTION PREVENTION SHALL OBTAIN A COPY OF THE STORM WATER POLLUTION PREVENTION PLAN AND THE STATE OF ARKANSAS NATIONAL POLLUTANT DISCHARGE ELIMINATION SYSTEM GENERAL PERMIT (NPDES PERMIT) AND BECOME FAMILIAR WITH THEIR CONTENTS.
- THE TEMPORARY PARKING AND STORAGE AREA SHALL ALSO BE USED AS THE EQUIPMENT MAINTENANCE AREA, EQUIPMENT CLEANING AREA, EMPLOYEE BREAK AREA, AND AREA FOR LOCATING PORTABLE FACILITIES, OFFICE TRAILERS AND TOILET FACILITIES. THE EXACT LOCATIONS SHALL BE COORDINATED WITH THE OWNER'S CONSTRUCTION MANAGER.
- ALL WASH WATER (CONCRETE TRUCKS, VEHICLE CLEANING, EQUIPMENT CLEANING, ETC.) SHALL BE DISPOSED OF IN A MANNER THAT PREVENTS CONTACT BETWEEN THESE MATERIALS AND STORM WATER THAT IS DISCHARGED FROM THE SITE.
- MAINTAIN ON THE SITE OR HAVE READILY AVAILABLE SUFFICIENT OIL AND GREASE ABSORBING MATERIALS AND FLotation BOOMS TO CONTAIN AND CLEAN UP FUEL OR CHEMICAL SPILLS AND LEAKS.
- DUST ON THE SITE SHALL BE CONTROLLED BY SPRAYING WATER ON DRY AREAS OF THE SITE. THE USE OF MOTOR OILS AND OTHER PETROLEUM BASED OR TOXIC LIQUIDS FOR DUST SUPPRESSION OPERATIONS IS PROHIBITED.
- NO RUBBISH, TRASH, GARBAGE OR OTHER SUCH MATERIALS SHALL BE DISCHARGED INTO DRAINAGE DITCHES OR WATERS OF THE STATE.
- ALL STORM WATER POLLUTION PREVENTION MEASURES PRESENTED ON THIS PLAN, AND IN THE STORM WATER POLLUTION PREVENTION PLAN, SHALL BE INITIATED AS SOON AS PRACTICABLE.
- DISTURBED PORTIONS OF THE SITE WHERE CONSTRUCTION ACTIVITY WILL STOP FOR AT LEAST 21 DAYS, SHALL BE TEMPORARILY SEEDED WITHIN 14 DAYS.
- DISTURBED PORTIONS OF THE SITE WHERE CONSTRUCTION ACTIVITY HAS PERMANENTLY STOPPED SHALL BE PERMANENTLY SEEDED. THESE AREAS SHALL BE SEEDED NO LATER THAN 14 DAYS AFTER THE LAST CONSTRUCTION ACTIVITY OCCURRING IN THESE AREAS. REFER TO THE LANDSCAPING PLAN.
- IF THE ACTION OF VEHICLES TRAVELING OVER THE GRAVEL CONSTRUCTION ENTRANCES IS NOT SUFFICIENT TO REMOVE THE MAJORITY OF DIRT OR MUD, THEN THE TIRES MUST BE WASHED BEFORE THE VEHICLES ENTER A PUBLIC ROAD. IF WASHING IS USED, PROVISIONS MUST BE MADE TO INTERCEPT THE WASH WATER AND TRAP THE SEDIMENT BEFORE IT IS CARRIED OFF THE SITE. THE EXACT LOCATIONS SHALL BE COORDINATED WITH THE OWNERS CONSTRUCTION MANAGER.
- ALL MATERIALS SPILLED, DROPPED, WASHED OR TRACKED FROM VEHICLES ONTO ROADWAYS OR INTO STORM DRAINS MUST BE REMOVED IMMEDIATELY.
- CONTRACTORS OR SUBCONTRACTORS WILL BE RESPONSIBLE FOR REMOVING SEDIMENT IN THE DETENTION POND AFTER THE STABILIZATION OF THE SITE AND ALSO ANY SEDIMENT THAT MAY HAVE COLLECTED IN THE STORM SEWER DRAINAGE SYSTEMS.
- IF SOIL STOCKPILING IS EMPLOYED ON THE SITE, SILT FENCES SHALL BE USED TO HELP CONTAIN THE SEDIMENT.
- SLOPES SHALL BE LEFT IN A ROUGHENED CONDITION DURING THE GRADING PHASE TO REDUCE RUNOFF VELOCITIES AND EROSION.
- SEDIMENT BASINS ARE ATTRACTIVE TO CHILDREN AND CAN BE VERY DANGEROUS. IN ALL CASES, LOCAL ORDINANCES AND REGULATIONS REGARDING HEALTH AND SAFETY MUST BE ADHERED TO.



Know what's below.
Call before you dig.

GENERAL EROSION NOTES CONT'D

- ALL TEMPORARY EROSION AND SEDIMENT CONTROL MEASURES SHALL BE DISPOSED OF WITHIN 30 DAYS AFTER FINAL STABILIZATION. FINAL STABILIZATION HAS OCCURRED WHEN ALL SOIL DISTURBING ACTIVITIES ARE COMPLETED AND A UNIFORM PERENNIAL VEGETATIVE COVER WITH A DENSITY OF 70% OF THE COVER FOR UNPAVED AREAS AND AREAS NOT COVERED BY PERMANENT STRUCTURES HAS BEEN EMPLOYED.
- DUE TO THE GRADE CHANGES DURING THE DEVELOPMENT OF THE PROJECT, THE CONTRACTOR SHALL BE RESPONSIBLE FOR ADJUSTING THE EROSION CONTROL MEASURES (SILT FENCES, STRAW BALES, ETC.) TO HELP PREVENT EROSION AND STORM WATER POLLUTION.
- ALL OFF-SITE CONSTRUCTION SHALL BE STABILIZED AT THE END OF EACH WORKING DAY. THIS INCLUDES BACKFILLING OF TRENCHES FOR STORM DRAINS & UTILITY CONSTRUCTION AND PLACEMENT OF GRAVEL OR BITUMINOUS PAVING FOR ROAD CONSTRUCTION.

MAINTENANCE
ALL MEASURES STATED ON THIS EROSION AND SEDIMENT CONTROL PLAN, AND IN THE STORM WATER POLLUTION PREVENTION PLAN, SHALL BE MAINTAINED IN FULLY FUNCTIONAL CONDITION UNTIL FINAL STABILIZATION OF THE SITE. ALL EROSION AND SEDIMENTATION CONTROL MEASURES SHALL BE CHECKED BY A QUALIFIED PERSON AT LEAST ONCE EVERY SEVEN CALENDAR DAYS AND WITHIN 24 HOURS OF THE END OF A RAINFALL EVENT, AND SHOULD BE CLEANED AND REPAIRED IN ACCORDANCE WITH THE FOLLOWING:

- STRAW BALE INLET PROTECTION DEVICES AND BARRIERS SHALL BE REPAIRED OR REPLACED IF THEY SHOW SIGNS OF UNDERMINING, OR SHALL BE REPLACED IF THEY SHOW SIGNS OF DETERIORATION.
- ALL SEEDED AREAS SHALL BE CHECKED REGULARLY TO SEE THAT A GOOD STAND IS MAINTAINED. AREAS SHOULD BE FERTILIZED AND RESEEDED AS NEEDED.
- SILT FENCES SHALL BE REPAIRED TO THEIR ORIGINAL CONDITIONS IF DAMAGED. SEDIMENT SHALL BE REMOVED FROM THE SILT FENCES WHEN IT REACHES ONE-THIRD TO ONE-HALF THE HEIGHT OF THE SILT FENCE.
- THE CONSTRUCTION ENTRANCES SHALL BE MAINTAINED IN A CONDITION WHICH WILL PREVENT TRACKING OR FLOW OF MUD ONTO PUBLIC RIGHTS-OF-WAY. THIS MAY REQUIRE PERIODIC TOP DRESSING OF THE CONSTRUCTION ENTRANCES AS CONDITIONS DEMAND.
- THE TEMPORARY PARKING AND STORAGE AREA SHALL BE KEPT IN GOOD CONDITION (SUITABLE FOR PARKING AND STORAGE). THIS MAY REQUIRE PERIODIC TOP DRESSING OF THE TEMPORARY PARKING AS CONDITIONS DEMAND.
- OUTLET STRUCTURES IN THE SEDIMENTATION BASINS SHALL BE MAINTAINED IN OPERATIONAL CONDITIONS AT ALL TIMES. SEDIMENT IN THE SEDIMENTATION BASINS SHALL NOT EXCEED THE SEDIMENTATION CLEANOUT LEVEL. (JOB SPECIFIC)
- IF THE STONES IN THE GRAVEL INLET SEDIMENT FILTERS BECOME CLOGGED WITH SEDIMENT, THE STONES MUST BE PULLED AWAY, CLEANED AND REPLACED. (JOB SPECIFIC)
- THE EMBANKMENT OF THE SEDIMENTATION BASIN SHALL BE CHECKED REGULARLY TO INSURE THAT IT IS STRUCTURALLY SOUND AND HAS NOT BEEN DAMAGED BY EROSION OR CONSTRUCTION EQUIPMENT. (JOB SPECIFIC)
- SEDIMENT IN THE TEMPORARY SEDIMENT TRAP SHALL BE REMOVED AND THE TRAP RESTORED TO ITS ORIGINAL DIMENSIONS WHEN THE SEDIMENT HAS REACHED AN ELEVATION OF APPROXIMATELY 50% OF STRUCTURE HEIGHT.
- THE TEMPORARY SEDIMENT TRAP AND SEDIMENTATION BASIN STRUCTURES SHALL BE CHECKED REGULARLY TO INSURE THAT THEY ARE STRUCTURALLY SOUND AND HAVE NOT BEEN DAMAGED BY EROSION OR CONSTRUCTION EQUIPMENT. (JOB SPECIFIC)



Engineering Associates, Inc.

ENGINEERS • PLANNERS • SURVEYORS
LANDSCAPE ARCHITECTS • ENVIRONMENTAL SCIENTISTS

3108 S.W. REGENCY PARKWAY, SUITE 2
Bentonville, AR 72712

(479)273-9472
FAX (479)273-0844

SILICA VALLEY RV/BOAT STORAGE

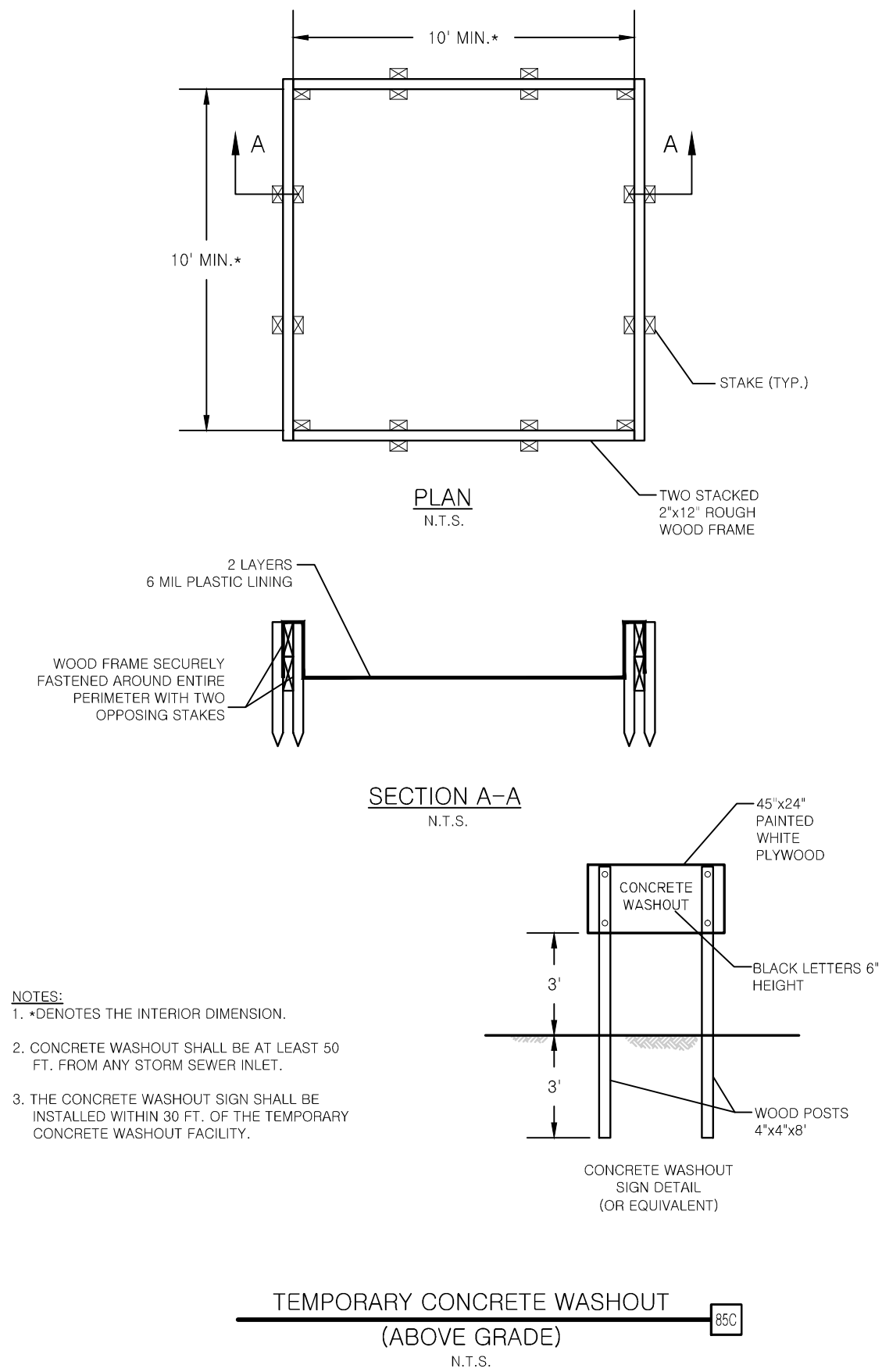
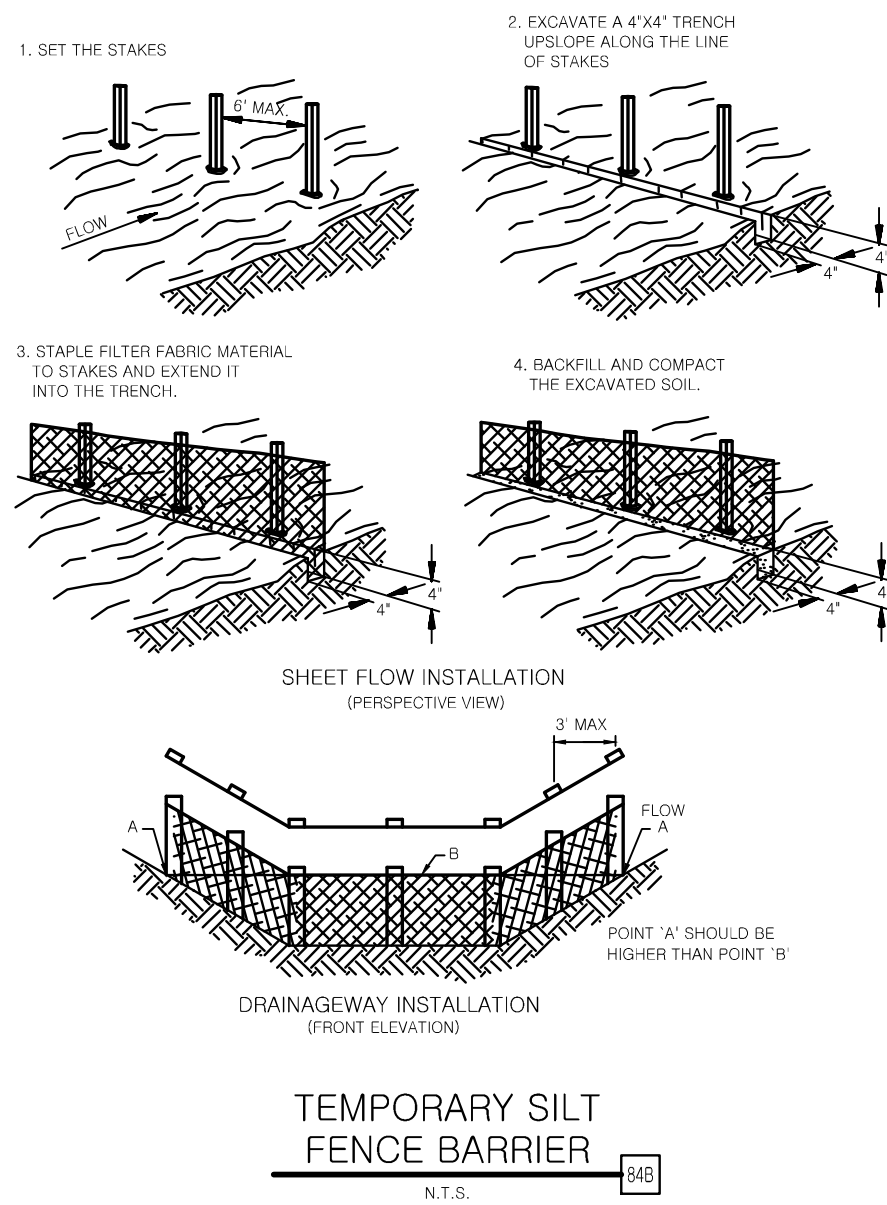
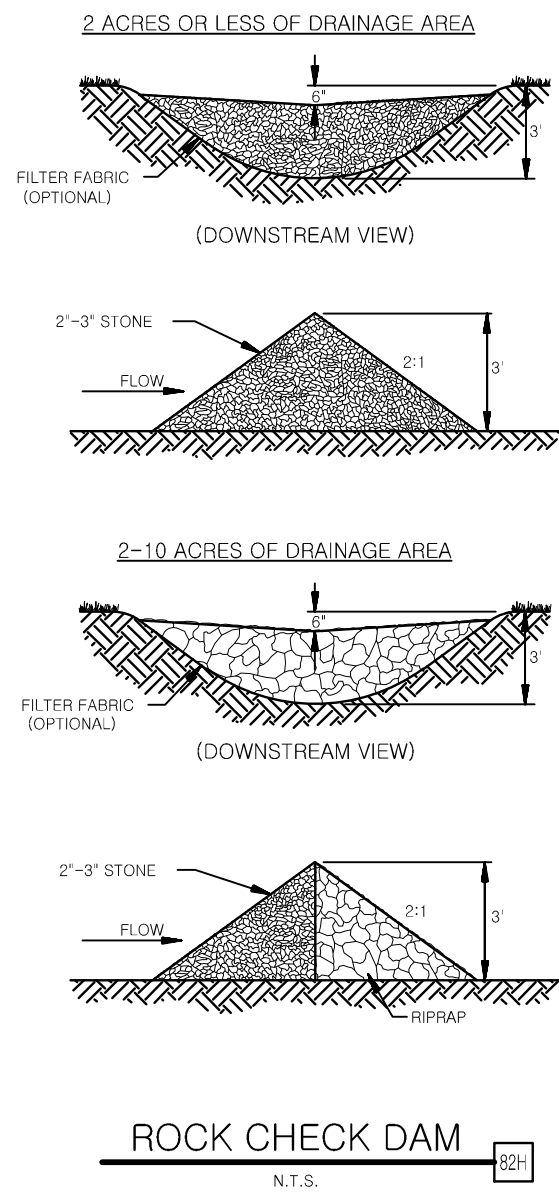
**15206 SILICA ST.
ROGERS ARKANSAS, 72756**


SITE GRADING & EROSION CONTROL

REV DATE
8/19/15
REV-0

SHEET NO.
2 OF 3

JOB # 9300 DRAWING: Prairie Creek-Site.dwg LAST SAVED BY: REVITTS



9300	8/19/15	TCO	TCO	RYE	RYE
CEI PROJECT NO.	INITIAL DATE	DPOR	PM	DES	DRW
 Engineering Associates, Inc. <u>ENGINEERS • PLANNERS • SURVEYORS</u> <u>LANDSCAPE ARCHITECTS • ENVIRONMENTAL SCIENTISTS</u>					
3108 S.W. REGENCY PARKWAY, SUITE 2 Bentonville, AR 72712				(479)273-9472 FAX (479)273-0844	
SILICA VALLEY RV/BOAT STORAGE					
15206 SILICA ST. ROGERS ARKANSAS, 72756					
EROSION CONTROL DETAILS				REV DATE 8/19/15 REV-0	SHEET NO. 3 OF 3