

miroco

www.miroco.net

E-MAIL

support@mirocohome.com

MANUFACTURER

Manufacturer: Shenzhen NearbyExpress Technology
Development Co.,Ltd.

Address: Floor 7, Building E, Galaxy World Phase II,
Shenzhen, China



5016950



MADE IN CHINA

Rev_1.5_EN

miroco



USER GUIDE

Miroco Milk Frother
Model: MI-MF005

CONTENTS

IMPORTANT SAFETY INSTRUCTIONS	01
Package Contents	06
Product Diagram	07
Specifications	08
Preparation Guide	09
Before First Use	10
Using Your Milk Frother	11
Hints & Tips	21
Cleaning and Maintenance	22
Troubleshooting	24
Warranty and Service	27



Thanks for choosing Miroco Milk Frother. Please read this User Guide thoroughly before use and retain it for future reference.

IMPORTANT SAFETY INSTRUCTIONS

READ AND FOLLOW ALL SAFETY INFORMATION AND INSTRUCTIONS. KEEP FOR FUTURE REFERENCE.

FOR HOUSEHOLD USE ONLY

⚠ WARNING

When using electrical appliances, basic precautions should always be followed to reduce the risk of fire, electric shock, and injury to persons, including the following:

- This product should be used only in accordance with the specifications outlined in this User Guide. Usage other than what has been specified here may result in serious injury.
- Read all instructions before using the appliance.
- This appliance must be earthed reliably.
- To reduce the risk of fire, electric shock, and injury to persons, never immerse the power base, power cord, power plug or the appliance in water or allow moisture to come into contact with these parts.
- Stop using the product when it is damaged in any manner (including breakage of the cable).
- Do not touch any live part of the device when it is powered on.

- Do not place on or near a hot gas or electric burner, or in a heated oven.
- This appliance must be provided with correct voltage via a professionally installed power socket.
- Do not operate the appliance with a damaged cord or plug or after malfunctions occur, or has been damaged in any manner. Return the appliance to the nearest authorized service facility for examination, repair or adjustment.
- Be sure not to make the main cable hang loosely, or contact or move the plug with a wet hand, or put the plug on any surface of a heating object, or keep it in contact with oil.
- Always remove the plug from the power outlet and allow to cool if the appliance is not in use, before attempting to move the appliance, before cleaning, disassembling, assembling and when storing the appliance.
- This appliance is not intended for use by persons (including children) with reduced physical, sensory or mental capabilities, or lack of experience and knowledge, unless they have been given supervision or instruction concerning the use of the appliance by person responsible for their safety.
- Frothing whisk is a choking hazard. Children must always be

supervised and never left unattended with appliance. Be sure not let any child play with this appliance.

- This appliance is for household use only. Do not use the appliance for anything other than its intended purpose as described in this User Guide. Do not use outdoors. Not suitable for commercial and industrial use.
- Dispose of this product as per local regulations.
- Do not let the cord hang over the edge of a table or counter, or touch hot surfaces.
- The use of accessory attachments not recommended by the appliance manufacturer may result in fire, electric shock or injury to persons.
- Do not attempt to modify or repair the product by yourself.

⚠ CAUTION

- Never fill milk higher than the max level or lower than the minimum level marked on the inner wall to avoid overflow.
- Do not operate the appliance when there is no milk inside it.
- Always ensure the whisk is securely attached to the milk jug before use.
- Do not touch the frothing whisk when the unit is working.
- Do not touch hot surfaces. Use handles or knobs.
- The appliance has been designed specifically for the purpose of foaming milk and other dairy milk alternatives and is not intended to whip, thicken or heat other food substances e.g. oil, eggs, butter, heavy whipping cream, soups, gravies etc.
- The appliance is not designed to mix a large quantity of dry ingredients or melt large food pieces e.g. cubed chocolate, ground nuts, whole spices, fresh herbs, ice cubes etc.
- Do not touch the metal parts, whisk, and surface of this product when it is powered on to avoid scald.
- Do not remove the lid when the unit is working to avoid scald. The milk frother can be used only in combination with its jug and lid.
- Do not leave the appliance unattended when in use.
- Never operate the appliance on uneven surface.

- Do not put your finger or any objects into the gap of the frother when it is working.
- Make sure to use the appropriate whisk.
- To disconnect, turn any control to “off”, then remove the plug from the wall outlet.
- Clean the jug immediately after each use. Flush and clean the walls, then dry with a soft cloth.
- Do not use harsh abrasive, caustic cleaners or oven cleaners when cleaning the appliance.

SAVE THESE INSTRUCTIONS

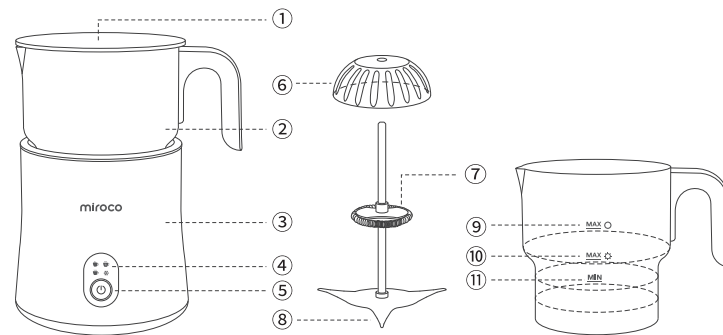
This appliance can be used by children aged from 8 years and above if they have been given supervision or instruction concerning use of the appliance in a safe way and if they understand the hazards involved.

Cleaning and user maintenance shall not be made by children unless they are older than 8 and supervised. Keep the appliance and its cord out of reach of children aged less than 8 years.

Package Contents

- 1 x Miroco Milk Frother (MI-MF005)
- 1 x Frothing Whisk
- 1 x Frothing Whisk Holder
- 1 x Chocolate Cover
- 1 x User Guide

Product Diagram



- ① Transparent Lid
- ② Stainless Steel Milk Jug
- ③ Power Base
- ④ Function Panel
- ⑤ Power Button







- ⑥ Chocolate Cover
- ⑦ Frothing Whisk
- ⑧ Frothing Whisk Holder
- ⑨ MAX Level for Heating
- ⑩ MAX Level for Frothing
- ⑪ MIN Level for Frothing

Specifications

Model	MI-MF005
Input	120V~ 60Hz
Power	550W
Maximum Temperature	65°C - 85 °C /149°F - 185°F
Maximum Capacity for Frothing	250ml / 8.5oz
Maximum Capacity for Heating	500ml / 16.9oz

Preparation Guide

As a general guide, the chart below shows the whisk function, capacity, operating time and temperature for your reference.

Whisk	Icon	Function	Capacity	Time	Temperature
		Stirring & Heating (a small amount of milk foam)	500ml / 16.9oz	< 430s	65-75°C / 149-167°F
		Frothing & Heating	250ml / 8.5oz	< 250s	65-75°C / 149-167°F
		Frothing Cold Milk	250ml / 8.5oz	120s	/
		Frothing & Heating Chocolate Milk (less milk foam)	500ml / 16.9oz	< 540s	75-85°C / 167-185°F

Note:

- The operating time varies with the environment, milk type and initial temperature of the frother.
- The above operating time is counted based on heating the milk of 10°C under ambient temperature of 25°C.

Before First Use

- Remove and safely discard all promotional labels and packing materials attached to the milk frother.
- Before first use, wash the milk jug, frothing whisk and lid in warm water with a little detergent then rinse and dry thoroughly. Wipe the exterior of the power base with a soft damp cloth then dry thoroughly.

Using Your Milk Frother

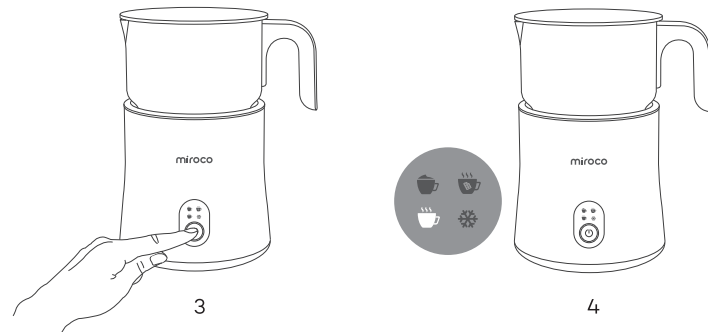
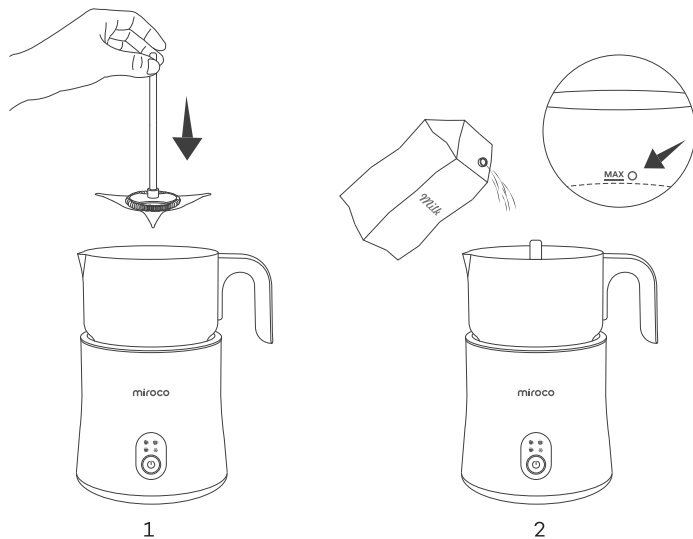
Mode Selection

1. Press the Power Button once to turn on the milk frother. Press it once again within 2 seconds to switch to the next mode. To select the desired mode, please make sure the button is pressed within 2 seconds each time.
2. Each time you press the Power Button within 2 seconds, you can cycle through 4 modes with the corresponding icon lighting up.
3. When the Power Button is pressed once during working, the milk frother will enter Standby mode. Press the button once again to restart the frother with the last set mode on.

Milk Jug Detection

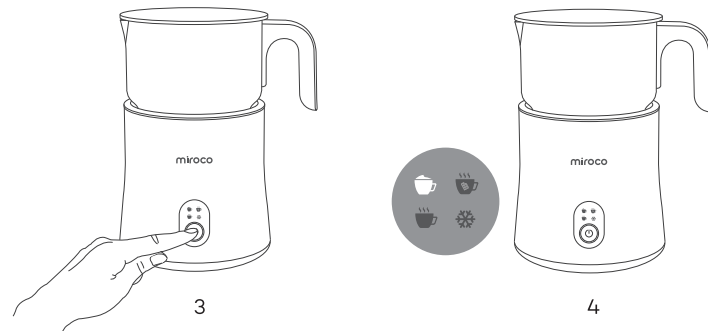
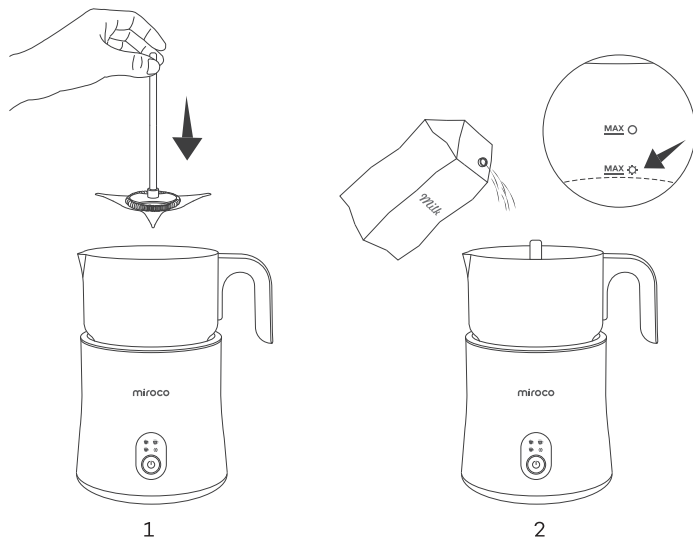
1. Place the power base with milk jug on a flat level surface and plug the power cord into a power outlet.
2. If the milk jug is not firmly placed onto the power base, the frother will not start working with red indicator flashing for 5 minutes after pressing the Power Button.




Stirring & Heating ☕



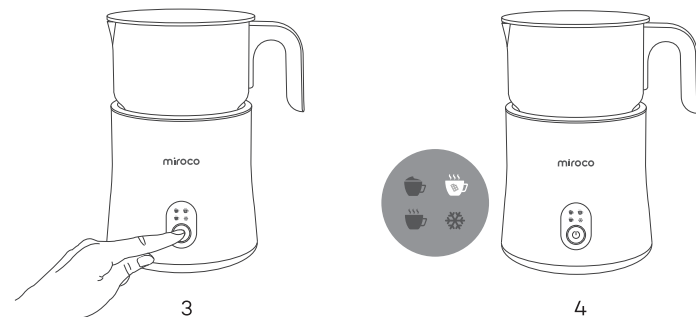
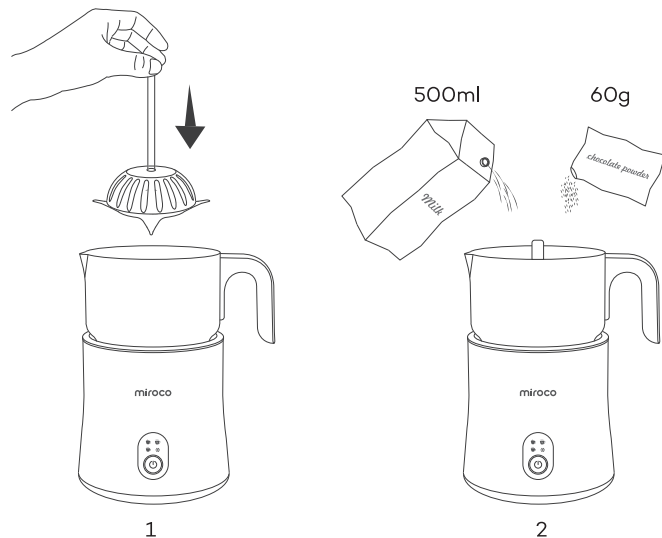
1. Place the frothing whisk (without chocolate cover) inside the milk jug.
2. Pour milk into the jug. Do not exceed the **MAX** Level for Heating (500ml).
3. Press the Power Button within 2 seconds to select the Stirring & Heating mode.
4. The ☕ will light up red to start stirring & heating. Once completed, the ☕ will keep flashing red for 30 seconds and turn off. Once the milk jug is removed before light off, all red lights will keep flashing for 5 minutes until the power is cut off or the milk jug is put back into the power base.



Frothing & Heating



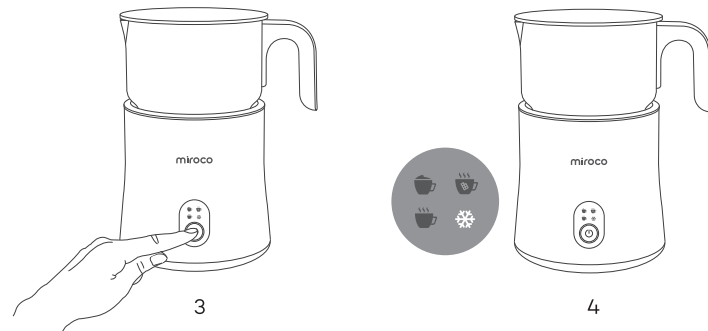
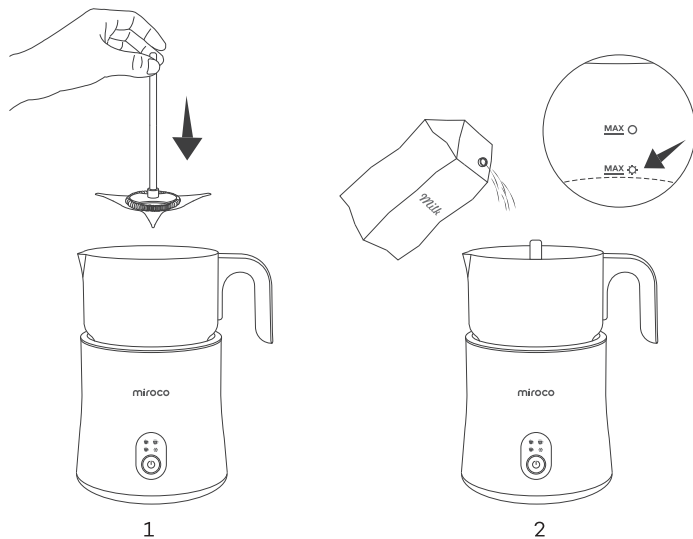
1. Place the frothing whisk (without chocolate cover) inside the milk jug.
2. Pour milk into the jug. Do not exceed the **MAX**  **MAX** Level for Frothing (250ml).
3. Press the Power Button within 2 seconds to select the Frothing & Heating mode.
4. The  will light up red to start frothing & heating. Once completed, the  will keep flashing red for 30 seconds and turn off. Once the milk jug is removed before light off, all red lights will keep flashing for 5 minutes until the power is cut off or the milk jug is put back into the power base..

Frothing & Heating Chocolate Milk



1. Place the frothing whisk (with chocolate cover) inside the milk jug.
2. Pour milk (500ml) and chocolate powder (60g) into the jug. For better mixing of milk and chocolate, please do not remove the frothing whisk when adding the ingredients.
3. Press the Power Button within 2 seconds to select the Frothing & Heating Chocolate Milk mode.
4. The  will light up red to start frothing & heating chocolate milk. Once completed, the  will keep flashing red for 30 seconds and turn off. Once the milk jug is removed before light off, all red lights will keep flashing for 5 minutes until the power is cut off or the milk jug is put back into the power base.

Frothing Cold Milk ❄️



1. Place the frothing whisk (without chocolate cover) inside the milk jug.
2. Pour milk into the jug. Do not exceed the **MAX** ❄️ MAX Level for Frothing (250ml).
3. Press the Power Button within 2 seconds to select the Frothing Cold Milk mode.
4. The ❄️ will light up blue to start frothing cold milk. Once completed, the ❄️ will keep flashing blue for 30 seconds and turn off. Once the milk jug is removed before light off, all red lights will keep flashing for 5 minutes until the power is cut off or the milk jug is put back into the power base.

Milk Frother Sounds

1. During the operation, the milk frother will alert you with beep sounds.
 - Beep once when
 - i. plugged in,
 - ii. starts working under selected mode, or
 - iii. milk jug is removed from the power base.
 - Beep 3 times when the selected mode is completed.
2. To mute the sounds, press and hold the Power Button for 3 seconds.

Hints & Tips

- We recommend the use of a long life milk (UHT) with a high protein content. If you insist on non-dairy milk, a Barista style non-dairy milk is recommended which should help with the milk froth for plant milk. Froth result cannot be guaranteed for any other non-barista style plant milk.
- For best results, the milk should be taken from the refrigerator immediately before frothing. The colder the milk, the better. We suggest the milk temperature is around 4~6°C (39.2~42.8°F).
- For optimal froth, froth and heat the milk first, then prepare coffee and hot chocolate when the milk frother is working.
- Milk can heat up to 70±5°C (149-167°F), which is the optimal temperature for drinking. Over-heating will destroy milk nutrients.
- This milk frother is also suitable for frothing the frozen milk. However, it does not mean that the frozen milk can be made into frozen milk foam since heats will be generated during working.
- Never fill milk over the MAX Level. Make sure to use the appropriate whisk. Check the corresponding level. MAX Fill Line (250ml / 8.5oz)

before frothing milk. MAX Fill Line (500ml / 16.9oz) before heating milk.

- Pour frothed milk promptly to avoid the milk from separating.
- Clean the milk jug immediately after each use. Flush and clean the walls using warm, soapy water and a non-abrasive cloth. Then dry with a soft cloth. The milk jug and lid can be washed in the dishwasher.

Cleaning and Maintenance

Both the milk jug and frothing whisk should be cleaned immediately after each use to prevent build-up of milk residue.

- Unplug the power cord from the power outlet before cleaning.
- To avoid the risk of electric shock, do not clean the base or the power cord with water and do not immerse them.
- The milk jug and frothing whisk will be hot immediately after use, so carefully remove the milk jug from the power base and fill with tap

water. Once the milk jug and frothing whisk have cooled completely, remove the frothing whisk and rinse off any milk in warm water.

- Wash the milk jug, jug lid, and frothing whisk in warm soapy water, rinse and dry thoroughly.
- Wipe the exterior of the power base with a soft damp cloth. Dry thoroughly.
- Store the cleaned milk jug, jug lid, and frothing whisk in safe place away from children.

Note:

- Do not use alkaline or abrasive cleaning agents, steel wool or scouring pads on any part of the milk frother as these can damage the appliance surfaces.
- Never immerse the power base in water or any other liquid. The outside of the milk jug must always be clean and dry before placing on the power base prior to use.
- The milk jug and lid can be washed in the dishwasher.

Troubleshooting

Problem	Possible Causes	Solution
Milk is not foaming?	Milk is warm or too hot to foam.	<ul style="list-style-type: none"> • Use cold, fresh (or freshly opened) milk. • Do not re-foam already heated milk. • Try reducing the quantity of milk in the milk jug. • Try a different milk. Experiment with different milk and frothing whisks to achieve the desired result.
Milk is not heating	/	<ul style="list-style-type: none"> • Ensure the milk jug is correctly positioned onto the power base. • Ensure that the milk frother has been properly turned on.

Problem	Possible Causes	Solution
Frothing whisk is not moving or is dislodged	<ul style="list-style-type: none"> • Frothing whisk is not placed correctly. • Take out the frothing whisk during working. • Ingredients have been added too quickly. 	<ul style="list-style-type: none"> • Stop operation. • Remove liquid from milk jug. • Place the frothing whisk inside the milk jug before turning on the milk frother. • Refill milk jug with liquid. • Start frothing. Add ingredients (if desired) slowly and in small quantities after the milk has already started frothing.
Red indicator flashes	Milk jug not detected.	Make sure the milk jug is firmly placed onto the power base.

Problem	Possible Causes	Solution
Grinding noise	<ul style="list-style-type: none"> Frothing whisk is not placed correctly. Take out the frothing whisk during working. The milk jug has been removed from the power base during operation. 	<ul style="list-style-type: none"> Place the frothing whisk inside the milk jug before turning on the milk frother. Remove the milk jug from the power base after each process is completed with icon flashing.

Warranty and Service

This product is covered with Miroco product and labor warranty for 12 months from the date of its original purchase. If any problems occur, please contact the Miroco Customer Care Centre in your country via the contact information listed in this User Guide.

FCC Compliance

This device complies with Part 15 of the FCC Rules. Operation is subject to the following two conditions:

- (1) This device may not cause harmful interference, and
- (2) This device must accept any interference received, including interference that may cause undesired operation.