

MESSENGER



Core Medilogic Product Range



Wound Expert Tips



Exclusive Equipment Offers



Tips To Grow Your Practice



NEW TO MEDILOGIC?

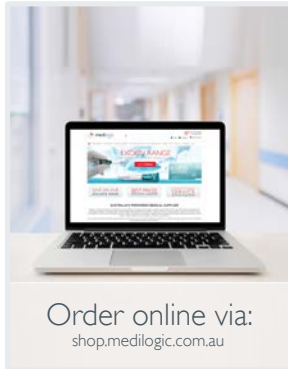
TAKE ADVANTAGE OF
OUR INTRODUCTORY
OFFER!
SEE PAGE 2 FOR DETAILS



How to order with Medilogic.

We insist on making it easy for our clients to work with Medilogic, we'll happily receive your orders however you choose to send them. If you're new to Medilogic you can register online or contact one of our customer service team to have an account set up in no time.

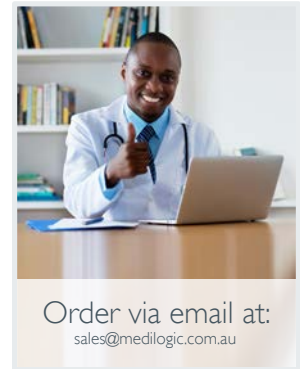
Our customer service team and field representatives are always at the ready to help you with favourites lists, product enquiries or a special deal.



Order online via:
shop.medilogic.com.au



Order via phone at:
1300 111 250



Order via email at:
sales@medilogic.com.au

Are you ordering for the first time?

We're offering a warm welcome if you're new to working with Medilogic. If you spend over \$500 excluding GST on products from the Messenger you can choose between one of the following three gifts as a thank you.

- Lavazza Espresso Capsule Machine.
- Sunbeam Café Grill.
- \$75 worth of Medilogic branded product.



Some of our brands ...



Who are Medilogic?

Formerly known as Marne Medical, Medilogic is a leading provider of medical devices and consumables to the healthcare industry. We are known for our innovative and passionate approach in delivering cutting edge products, outstanding value and easy-to-work with nature. Here are six things that make us great:



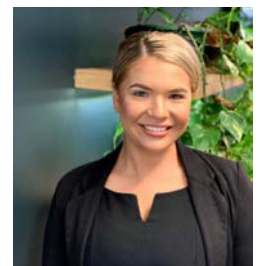
What our customers say

<p>“</p>  <p><i>I have been dealing with Medilogic for some years now. As a busy cosmetic and plastic surgery practice we require an efficient supply of good materials and we require good backup support. Medilogic have provided an excellent service for us in this respect. I have no hesitation in recommending them as suppliers of products required by medical practices because of their efficiency,</i></p> <p>Dr John Newton Cosmetic and Plastic Surgeon, MBBS, FRACS, AASPS, ASAPS.</p>	<p>“</p>  <p><i>The service offered by Medilogic is second to none. The range of products is endless and if they don't stock something they will get it in for you. Medilogic has provided the entire medical fitout for our new premises in Newcastle. The goods were delivered on time and they were more than happy to exchange items if required. If it is excellent service you are after I cannot recommend them highly enough.</i></p> <p>Practice Owner, Lotus Dermatology, Newcastle.</p>	<p>“</p>  <p><i>We are very grateful for the care and service that Medilogic have given to Tamworth Aboriginal Medical Service. They support us with many calls for product information, quotes and personal service to the facility. Their ordering system is excellent with us receiving our orders the next working day. With us being in a regional country area, we consider this exceptional.</i></p> <p>Practice Manager, Tamworth Aboriginal Medical Service</p>	<p>“</p>  <p><i>Medilogic has made our busy Dermatology Practice flow even more smoothly. Medilogic's website, ordering process, equipment choices, and after-purchase service is easy, prompt and professional. The Doctors and Nurses at Melanoma Institute of Australia.</i></p> <p>Doctors and Nurses, Melanoma Institute Of Australia.</p>
--	---	--	--

Meet Our Team

What I love about my role?

“There is so much to discover about the medical industry and I really look forward to learning something new every day. Overall, I enjoy nothing more than talking to our fantastic customers, helping people source products, speaking about the benefits of our own great products and making sure every customer is receiving top service from Medilogic.”



TERIE 'TEZ' HOLLINS
Customer Care Guru

Table of Contents

Introducing Medilogic Messenger 5

Wound Care In Primary Care 6

Wound Care Dressings 8

Flu Vaccines 12

Wound Closure 13

Surgical Consumables & Instruments 18

Diagnostic Consumables 26

Janitorial 27

10 Tips To Grow Your Practice 28

Diagnostic Equipment 30

Blood Pressure 33

Lighting 36

Scales & Measurement 38

Refrigeration 39

Electrosurgery & Defibrillation 40

Furniture 41

Contact Us



CALL



FAX



MAIL



EMAIL



WEBSITE



FACEBOOK



LINKEDIN

1300 - 111 - 250

1300 - 111 - 251

Send mail to:

sales@medilogic.com.au

www.medilogic.com.au

Look up 'Medilogic!'

Look up 'Medilogic!'

Talk to an Expert.
Monday - Friday
8:30am - 5pm EST

Fax Orders are
24/7.

PO Box 384
Cardiff NSW 2285
Australia.

Email Orders and
Questions to an
Expert.

Order Securely
Online 24/7.

Follow us for Updates,
News, and Promotions.

Connect with us on
LinkedIn.

Introducing The Medilogic Messenger

This publication is designed to be an informative and insightful catalogue whilst providing up to date information on products, pricing and special offers. In this issue and future issues, we will bring you:

The Core Product Range

Medilogic carries over 100,000 products as a complete supply solution for general practice, skin clinics dermatology, specialist clinics, imaging practices, day surgeries and more. However, there is a core range of these products which are by far our most popular and which we recommend for their outstanding quality and value. Medilogic Messenger is designed to keep you up to date on these products including key benefits, special offers and new releases without having to sift through thousands of irrelevant products.

Professional Tips

We work closely with many professionals in the healthcare industry who have a lifetime of experience. We'll include columns from some of these professionals with helpful tips in caring for your patients and operating your practice.

Inside Medilogic

Medilogic is a dynamic team and organisation. There is always a lot going on here! We'll keep you posted with key events and changes that may be of relevance and interest to you.

Industry Insights

Healthcare is fascinating. It's always continuously developing and changing to improve outcomes for patients. We keep our ear to the ground so we know what is going on. We'll share any insights that may be of particular interest to you.

Case Studies

It's always great to learn from how others have managed to improve outcomes for their patients and improve the functionality and profitability of their practice or facility. We'll include some insightful details on what others have done to achieve great results.



SETUP AN ACCOUNT INSTANTLY. CALL US ON 1300 441 250

5

WOUND CARE IN PRIMARY CARE

ABOUT MARGO ASIMUS:

In 2004 the company director, Margo Asimus was one of the first Wound Management-Nurse Practitioners to be authorised to practice in Australia. During her career Margo has mentored other Nurse Practitioners, has been a national president of Wounds Australia and has practiced in advanced wound clinics throughout the hunter area. Her knowledge in wound management prepared her to become a co-editor of an advanced wound management text along with international guest speaker engagements.

SKIN AND WOUND CARE CONSULTANCY:

Skin & Wound Care Consultancy Pty Ltd is a new company offering an expert health service in the Hunter region. This advanced wound management service can be provided in the patient's home, doctor's surgery or residential aged care facility in collaboration with the healthcare team.

In addition to advanced clinical support, wound management training specifically designed to meet each organisation and staffs requirements can be provided.



CONTACT DETAILS:

 0490 687 470
 appointments@woundconsultancy.com.au
 <https://woundconsultancy.com.au/>

FAQ & ANSWER

1. Should I put my wound out in the sun to help it heal?

Most wounds heal faster if kept moist. Wounds that are complicated by tinea or a fungal organism are the exception. The young & healthy person will form a scab and find the skin has healed underneath. Older people tend to be slower to heal and if a scab forms the wound drainage can't escape which increases the risk of a wound infection. A scabbed wound in an older person is not a healed wound.

2. If my wound is not healing fast enough should I take some antibiotics?

If the wound is red, hot, swollen, painful with an increase in drainage and an unpleasant odour it is most likely infected and will require antibiotic treatment. Antibiotics will not help heal wounds faster unless the wound is infected. Importantly cleaning the wound and applying the most appropriate dressing can help wounds heal.

3. When I was younger, I would apply dettol, mercurochrome or betadine on a wound to help it heal. Should I do this now?

Antiseptics can have a place in reducing microbes in wounds, especially if damage occurs which increases microbe introduction ie a cut with a dirty object. In this case it is appropriate to irrigate the area with Betadine. Mercurochrome is not recommended due to the risk of mercury poisoning. If the wound is clean and not heavily colonized with microbes, warm clean water or saline is recommended.

4. When I had a wound, we would go swimming at the beach to allow the salt water to help healing. What do you recommend?

Unfortunately overtime our beaches have become contaminated with pollution which can harbor resistant microbes. If these microbes are introduced into an open wound it can be difficult to treat, making the wound worse.

5. Should the wound be dressed every day?

If the wound is infected or has a lot of drainage it may need to be dressed every day. Otherwise dressings are changed according to the amount of drainage and the dressing's fluid handling capacity. Dressings can be left in place "for a week or a leak"

6. Why do nurses change the type of dressing?

The nurse will assess the wound at each dressing change and select the most appropriate dressing to support the wound to heal. As wounds heal the characteristics of the wound change hence the treatment changes.

7. Should I cover the dressing with a plastic bag when I shower?

A wound as a result of an operation usually closes (seals) 48-72 hours following surgery. The Surgeon may not want the wound to get wet before the wound has sealed so protecting the site from the shower is appropriate. Washing the limb is important to maintain healthy skin integrity. If the wound is opened and slow to heal ie a venous leg ulcer it is beneficial to wash the leg in the shower to remove skin debris and wound exudate. Wash the wound immediately before finishing your shower. Importantly if this is your shower at home you should clean the bathroom before and after the shower to reduce any cross infection. Dry with a clean towel which is only used on your wound. We do not advise exposing your wound in the shower if it is a shared bathroom in a facility. Consider spray bottles to wash the limb.

8. What soap should I use routinely use?

Frequent washing and using soap that is not pH neutral can harm the skin through drying. Ideally a liquid soap that is pH neutral is recommended for everyday application. If the wound has been opened for a long time or the site has not been showered an antimicrobial soap may be recommended to reduce the skin microbes however this should not be used long term as it is very drying. Cakes of soap dry and crack. Microbes can reside in the cracked soap and then contaminate the wound.

9. Why is moisturising skin important?

Aging causes the skin to become more fragile and drier. The protective lipid substance which moisturizes and protects the skin is easily removed through harsh soaps and frequent washing. Applying a quality moisturiser after showering will allow absorption and help protect the skin integrity from breakdown, minimizing skin tears.

10. Do all wounds heal eventually?

Unfortunately, no. Some wounds are as a result of cancer and will require a surgical opinion. Other wounds may not heal due to the persons general health. Blood supply, nutrition and disease control are central to the wound healing process. If a wound has been deemed non-healable symptom management becomes the goal of care.



SETUP AN ACCOUNT INSTANTLY. CALL US ON 1300 111 250

7

LOGISHIELD NON-WOVEN ADHESIVE WOUND DRESSING

**FUNCTIONAL
ALL-ROUNDER**


Features and Benefits

- Great non-woven adhesive wound dressing for dry or hot conditions.
- Latex free.
- Simple and effective dressing for most wound sites.
- Minor wounds such as sutured wounds and grazes can be managed with Logishield.

Code	Size	Pack Quantity	Price
MLNWP0507	5 x 7cm	50	\$4.95
MLNWP7510	7.5 x 10cm	50	\$9.95
MLNWP1015	10 x 15cm	25	\$19.95

LOGIFILM TAN TRANSPARENT FILM DRESSING WITH A TAN ABSORBENT PAD

WATERPROOF


Features and Benefits

- Waterproof barrier bonded with a tan coloured absorbent pad to form a dressing.
- Ideal for cuts, stitches and other post-op wounds.
- Latex free dressing.
- Designed to blend with patients skin

Code	Size	Pack Quantity	Price
MLTFT0607	6 x 7cm	50	\$29.95
MLTFT1012	10 x 12cm	50	\$65.50

LOGIFOAM SILICONE FOAM DRESSING WITH BORDER

**PREMIUM
QUALITY**


Features and Benefits

- Silicone foam dressing with a border.
- Ideal for wound such as minor burns, leg ulcers, medium to high exuding wounds and surgical wounds.
- Latex free dressing.
- Minimum pain and stress on the skin when changing.

Code	Size	Pack Quantity	Price
MLSFB0405	4 x 5cm	10	\$19.95
MLSFB7575	7.5 x 7.5cm	10	\$29.95
MLSFB1010	10 x 10cm	10	\$42.00
MLSFB1212	12.5 x 12.5cm	10	\$56.65
MLSFB1015	10 x 15cm	10	\$83.95

LOGICREPE

PREMIUM COTTON CREPE BANDAGE



Code	Size	Pack Quantity	Price
MLCB5040	5cm x 4m	12	\$4.95
MLCB7040	7cm x 4m	12	\$6.50
MLCB1040	10cm x 4m	12	\$7.50
MLCB1540	15cm x 4m	12	\$12.00

LOGIFILM

TRANSPARENT FILM DRESSING WITH AN ABSORBENT PAD



Code	Size	Pack Quantity	Price
MLTFP0607	6 x 7cm	50	\$19.95
MLTFP1012	10 x 12cm	50	\$47.50

LOGIFIX

NON-WOVEN RETENTION TAPE



Code	Size	Pack Quantity	Price
MLNWT0510	5cm x 10m	1	\$9.50
MLNWT1010	10cm x 10m	1	\$16.50

LOGIPORE

PAPER TAPE



Code	Colour	Size	Pack Quantity	Price
MLPPT2510	White	2.5cm x 10m	12	\$9.95
MLPPA2510	Tan	2.5cm x 9.1m	12	\$10.95

ECTOCARE MANUKA IG MAX

HONEY GAUZE NON-ADHERENT DRESSING

Code	Size	Pack Quantity	Price
PC-321050	5 x 5cm	10	\$92.67
PC-321100	10 x 10cm	10	\$117.42

Features and Benefits

- 100% Leptospermum scoparium honey from New Zealand impregnated into open weave acetate gauze.
- Unique patterned fabric, designed to allow free passage for control and exudate management.
- Expandable and exceptionally conformable.
- Sterile, single-use wound care dressings for use with secondary dressings for heavily exuding wounds.
- Particularly suitable for treating deep wounds and cavities.

ECTOCARE MANUKA FILL TUBE

42.5G HONEY LIQUID WOUND DRESSING



PC-301042

\$17.71

Features and Benefits

- 100% Leptospermum scoparium honey from New Zealand in an applicator tube.
- Honey's high sugar levels result in osmotic activity that promotes autolytic debridement and helps maintain a moist environment conducive to wound healing.
- Sterile, single-use wound care dressing for use in moist wound management.



EASY DISPENSING

- The front of the box tears away allowing it to double as a neat tape dispenser.
- Simply fold down the cut-off flap and start dispensing.



SPLIT BACKING

- Split paper backing makes the tape easy to remove.
- Helps the process of applying the tape in tricky to reach places.



FIRM & STRETCHY

- One-way stretch to allow greater patient mobility.
- Stretch will ensure tape doesn't peel itself off during movement.



SOFT & STRONG

- Soft tan coloured non-woven tape.
- Strong acrylic adhesive backing, versatile for all practical situations.



TAN CAMOUFLAGE

- Perfect for use in visible areas.
- Designed to blend with the patients skin.



Logifix Tan
MLNTT0510
\$12.50



Logifix Tan
MLNTT1010
\$17.95

Worried about
an ugly bandage?

Don't worry.
We've got you covered.



LOGIFIX TAN

NON-WOVEN RETENTION TAPE

- Tan Camouflage to blend with patient's skin.
- Firm and stretchy tape mobility.
- Soft and strong tape texture.
- Split backing to make the tape easy to remove.
- Easy dispensing with the box.



SETUP AN ACCOUNT INSTANTLY. CALL US ON 1300 111 250



SAME DAY DISPATCH ON ORDERS BEFORE 2PM.

ARE YOU PREPARED FOR FLU SEASON 2020?

**SAVE
AND
PRE-ORDER
NOW**

PRICE MATCH POLICY

CONTACT US FOR A DEAL TODAY!

SALES@MEDILOGIC.COM.AU

1300 111 250



-  **FREE SHIPPING**
on all orders over \$300*
-  **SEPARATE DELIVERIES**
if you have limited space
-  **LOWEST PRICES**
across our extensive range

FILL OUT THE FORM BELOW AND CONTACT US:

0 - 50	50 - 100	100+
\$11.95	\$10.95	\$POA

Total Amount Required (MUST ORDER IN LOTS OF 5):

Contact Name:

Clinic / Pharmacy Name:

Address:

Email:

Phone Number:

Fax:

Signed:

Date:

FAX ORDER TO: 1300 111 251

12 OUR CORE RANGE

Prices exclude GST. Freight charges apply to bulky items.*

SETUP AN ACCOUNT INSTANTLY. CALL US ON 1300 111 250.

VIGILENZ BRILON NON-ABSORBABLE SUTURES



12 Pack
\$33.47

36 Pack
\$99.25

Features and Benefits

- Nylon, non-absorbable, monofilament, surgical suture made from Polyamide 6.
- Polyamide 6 is well known for its high tensile strength and elasticity.
- Remarkably smooth, soft, and gives excellent knot security.
- Blue thread.
- Indication: Dermal Suture.
- Tensile Strength Retention: Gradual hydrolysis may result in gradual tensile strength loss over a period of time.
- Should not be used where permanent tensile strength retention is required.

**BUY 5
GET 1
FREE**

Code	USP Size	Needle Length	Thread Length	Pack Quantity
PC-B27CD240	2-0	24mm	75cm	12
PC-B37CD190	3-0	19mm	75cm	12
PC-B37CD1903	3-0	19mm	75cm	36
PC-B37CD240	3-0	24mm	75cm	12
PC-B37CD2403	3-0	24mm	75cm	36
PC-B44CD160	4-0	16mm	45cm	12
PC-B44CD1603	4-0	16mm	45cm	36
PC-B47CD160	4-0	16mm	75cm	12
PC-B44CD190	4-0	19mm	45cm	12
PC-B44CD1903	4-0	19mm	45cm	36
PC-B47CD190	4-0	19mm	75cm	12
PC-B47CD1903	4-0	19mm	75cm	36
PC-B54CD120	5-0	12mm	45cm	12
PC-B54CD1203	5-0	12mm	45cm	36
PC-B54CD160	5-0	16mm	45cm	12
PC-B54CD1603	5-0	16mm	45cm	36
PC-B57CD160	5-0	16mm	75cm	12
PC-B54CD190	5-0	19mm	45cm	12
PC-B64CD120	6-0	12mm	45cm	12
PC-B64CD160	6-0	16mm	45cm	12

VIGILENZ BRILON BIOPSY NON-ABSORBABLE SUTURES

Features and Benefits

- Identical to the Vigilez Brilon except with a shorter thread length.
- Nylon, non-absorbable, monofilament, surgical suture made from Polyamide 6.
- The pure monofilament nylon suture, extruded through precision technology offers uniformity in diameter and the tensile strength provides true knot security for medical suturing.
- Should not be used where permanent tensile strength retention is required.

**BUY 5
GET 1
FREE**

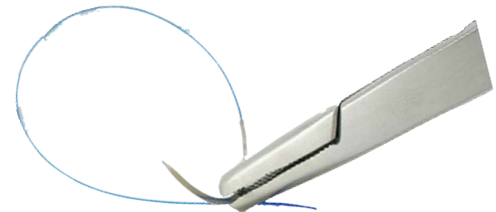
12 Pack
\$30.29

Code	USP Size	Needle Length	Thread Length	Pack Quantity
PC-B32CD190	3-0	19mm	23cm	12
PC-B42CD160	4-0	16mm	23cm	12
PC-B42CD190	4-0	19mm	23cm	12
PC-B52CD130	5-0	13mm	23cm	12
PC-B52CD160	5-0	16mm	23cm	12



**WORLD CLASS QUALITY
AT COMPETITIVE PRICES**

LESS WASTE!



VIGILENZ BRILON GOLD[®] NON-ABSORBABLE SUTURES ON A PRIMECUT NEEDLE

**PREMIUM
GRADE**

**BUY 5
GET 1
FREE**



12 Pack
\$56.65

36 Pack
\$155

Features and Benefits

- Premium grade surgical suture with superior knotting properties.
- Polyamide 6.6 non-absorbable monofilament with an engineered needle shape that results in an exceptionally sharp needle point.

Code	USP Size	Needle Length	Thread Length	Pack Quantity
PC-B37PD19B	3-0	19mm	75cm	12
PC-B37PD19B3	3-0	19mm	75cm	36
PC-B37PD24B	3-0	24mm	75cm	12
PC-B44PD160	4-0	16mm	45cm	12
PC-B44PD16B3	4-0	16mm	45cm	36
PC-B47PD190	4-0	19mm	75cm	12
PC-B47PD19B3	4-0	19mm	75cm	36
PC-B54PD130	5-0	13mm	45cm	12
PC-B54PD13B3	5-0	13mm	45cm	36
PC-B57PD160	5-0	16mm	75cm	12
PC-B64PD130	6-0	13mm	45cm	12

VIGILENZ ECOSYN

SYNTHETIC ABSORBABLE MONOFILAMENT SUTURE

12 Pack
\$66.95

Features and Benefits

- Produced from Poly Glycolide-co-Caprolactone (PGCL).
- High tensile strength and monofilament smoothness.
- Good handling and knotting characteristic.
- The PGCL suture is available in dyed in FDA approved dyestuff D&C Violet No 2 or undyed.
- Material is exclusive in predictable absorption properties.

Ecosyn® Absorbable Suture Specifications:

- Type: Absorbable Surgical Sutures.
- Material: Synthetic, Monofilament, Poly (Glycolide-co-Caprolactone) (PGCL).
- Colour of thread: Violet / Undyed.
- Sizes: USP 5/0 to USP 2.
- Tensile Strength Retention: Approx 50-60% remains at 7 days, 20% - 30% remains at 14 days. Tensile loss between 3-4 weeks.
- Mass Absorption Rate: 90-120 days breakdown by hydrolysis (minimal).
- Common Application: All short/mid term application.

36 Pack
\$196.50


Code	USP Size	Needle Length	Thread Length	Pack Quantity	Colour
PC-Y37CD19W	3-0	19mm	75cm	12	Beige
PC-Y37CD19W3	3-0	19mm	75cm	36	Beige
PC-Y37CD24W	3-0	24mm	75cm	12	Beige
PC-Y37CD24W3	3-0	24mm	75cm	36	Beige
PC-Y47CD16W	4-0	16mm	75cm	12	Beige
PC-Y47CD16W3	4-0	16mm	75cm	36	Beige
PC-Y47CD19W	4-0	19mm	75cm	12	Beige
PC-Y47CD19W3	4-0	19mm	74cm	36	Beige
PC-Y54CD13W	5-0	13mm	45cm	12	Beige
PC-Y54CD13W3	5-0	13mm	45cm	36	Beige
PC-Y57CD19W	5-0	19mm	75cm	12	Beige
PC-Y57CD16W	5-0	16mm	75cm	12	Beige
PC-Y37CD190	3-0	19mm	75cm	12	Violet
PC-Y37CD1903	3-0	19mm	75cm	36	Violet
PC-Y47CD190	4-0	19mm	75cm	12	Violet
PC-Y47CD1903	4-0	19mm	75cm	36	Violet
PC-Y57CD190	5-0	19mm	75cm	12	Violet
PC-Y67CD160	6-0	19mm	75cm	12	Violet

VIGILENZ ECOSYN GOLD®

SYNTHETIC ABSORBABLE MONOFILAMENT SUTURE ON A PRIMECUT NEEDLE

12 Pack
\$95.27

Features and Benefits

- Superior Primecut Needle.
- Type: Absorbable Surgical Suture.
- Material: Synthetic, Monofilament, Poly (Glycolide-co-Caprolactone) (PGCL).
- Color of Thread: Violet/Undyed.
- Tensile Strength Retention: Approx. 50-60% remains at 7 days, 20-30% remains at 14 days. Tensile loss between 3-4 weeks.
- Mass Absorption Rate: 90-120 days breakdown by hydrolysis (minimal).
- Common Application: All short/mid term application.

Code	USP Size	Needle Length	Thread Length
PC-Y37PD19W	3-0	19mm	75cm
PC-Y44PD16W	4-0	16mm	45cm
PC-Y47PD19W	4-0	19mm	75cm
PC-Y54PD13W	5-0	13mm	45cm
PC-Y54PD16W	5-0	16mm	45cm
PC-Y64PD3W	6-0	13mm	45cm

14

OUR CORE RANGE

Prices exclude GST. Freight charges apply to bulky items.*

TO OUR THOUSANDS OF LOYAL CUSTOMERS ... THANK YOU.

VIGILENZ ECOSORB BRAIDED SYNTHETIC ABSORBABLE

12 Pack
\$75.20



Features and Benefits

- A braided synthetic absorbable suture made of Poly(Glycolide-co-lactide).
- The braided threads are coated with Glacomer 37 and calcium stearate so that they glide easily but remain firm when knotting without causing a sawing effect.
- Poly(Glycolide-co-lactide) gives an excellent knot security and tensile strength as well as ease of handling.
- Thread color: Violet / Undyed.
- Absorption: 60-70 days. Breakdown by Hydrolysis.
- Tensile Strength Retention: Approximately 75% remains at 14 days. 45% remains at 21 days. 15% remains at 28 days.

Code	USP Size	Needle Length	Thread Length
PC-E27CD240	2-0	24mm	75cm
PC-E37CD190	3-0	19mm	75cm
PC-E37CD240	3-0	24mm	75cm
PC-E44CD160	4-0	16mm	45cm
PC-E44CD190	4-0	19mm	45cm
PC-E47CD190	4-0	19mm	75cm
PC-E54CD160	5-0	16mm	45cm

Can't find the sutures you're looking for?

Don't worry. We stock all leading brands.



B | BRAUN
SHARING EXPERTISE

ETHICON | Shaping the future of surgery
PART OF THE Johnson & Johnson FAMILY OF COMPANIES

COVIDIEN

LOGICLOSE REINFORCED WOUND CLOSURE STRIPS

Features and Benefits

- Ideal for securing, closing, and supporting small cuts and wounds, and for wound support following suture or staple removal.
- Holds firmly in place and breathable for great comfort.

Code	Size	Pack Quantity	Price
MLLCR3075	3 x 75mm	50	\$32.50
MLLCR6038	6 x 38mm	50	\$32.50
MLLCR6075	6 x 75mm	50	\$32.50
MLLCR6010	6 x 100mm	50	\$39.95
MLLCR1210	12 x 100mm	50	\$39.95



***THE FUTURE
IS HERE.***



**EXOFIN
TISSUE ADHESIVE**



ANGLED TIP

- Angled tip moves easily along body contours.
- Clear applicator allows user to see adhesive before it is dispensed.
- Optimal size of the skin contact area ensures precision of the adhesive application.



ALUMINUM TUBE

- Glass-free packaging for safety and convenience.
- Simple and intuitive dispensing.
- 1mL is the highest fill in the industry.



LONG CONNECTOR PIECE

- Raised grooves allow for easy grip with gloved fingers.



EASY TO USE

- Application is very simple, intuitive and technique independent. No special training required.
- Just tighten applicator tip and begin to express adhesive.
- Controlled application tip ensures the same reliable result each time for both multiple or single coats.



VISCIOUS

- Proprietary formulation and production process gives an unprecedented high viscosity.
- Reduced risk of adhesive migration (flowing) away from the incision site!



PATIENT FRIENDLY

- Waterproof barrier allows patient to take a shower almost immediately after the medical procedure.
- Excellent cosmetic outcome - less trauma to the wound site.
- No need for hospital revisit for suture removal no anaesthesia in emergency or outpatient applications.



COST EFFECTIVE

- Saves time and reduces costs of wound closure procedures.
- 1mL tube - 43% more adhesive than Dermabond® Advanced and 25% more than largest adhesive unit available.
- 0.5mL tube - 39% more adhesive than Dermabond® Mini.

APPLICATIONS

- General Operations.
- Orthopaedic Surgeries.
- Obstetrics & Gynaecology Procedures.
- Cardiovascular Surgeries.
- C-Sections & Cosmetic Surgery.

Exofin Micro - EX71010

\$139.50

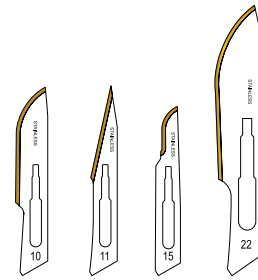
Exofin - EX70410

\$225.00



CUTTING EDGE QUALITY AND UNIQUE INNOVATION.

DIAMANTINE PREMIUM SCALPEL BLADES



HIGH PERFORMANCE

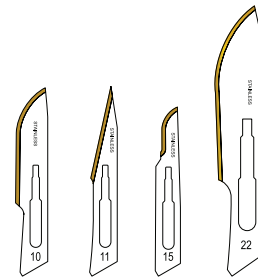
100 PER BOX

Features and Benefits

- Precision cutting and high performance. This is due to the zirconium nitride coating fused on the cutting edge after blades are atomically sharpened to precise angles.
- Durable cutting edge, that stays sharp incision after incision. The diamond like material creates a very hard edge that will not dull even under the most demanding cutting needs.
- Bio-compatible and highly corrosion resistant, using an environmentally friendly process.
- Compatible with autoclavable scalpel handles #3 and #4.
- Stainless steel and sterile.

Code	Size	Price
ML-00941	10	\$31.90
ML-00942	11	\$31.90
ML-00944	15	\$31.90
ML-00947	22	\$31.90

DIAMANTINE PREMIUM DISPOSABLE SCALPELS WITH SENSORY GRIP HANDLE



PRECISION SHARPENED

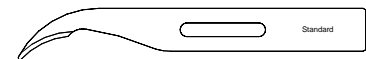
10 PER BOX

Features and Benefits

- Diamantine High-Performance Edge Blade for extreme sharpness and sharpness durability.
- Sensory grip handle.
- Blade Reinforcement: Handle reinforces the blade and enhances cutting action and control of the line of incision.
- Each handle has a graduated 6-centimeter rule to help determine incision length (indicative only).
- Size is clearly marked on blade and handle for easy identification.
- Protective sheath covers blade to help prevent accidental cuts.
- Easy-peel clear view pouch packaging.
- Not made with natural rubber latex and free from phthalates.

Code	Size	Price
ML-00903	10	\$17.95
ML-00904	11	\$17.95
ML-00905	15	\$17.95
ML-00908	22	\$17.95

PREMIUM STAINLESS STEEL STITCH CUTTER BLADES



HIGH QUALITY

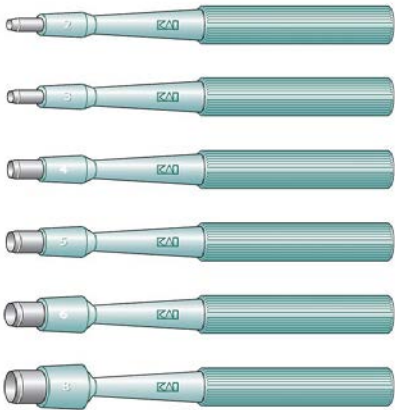
Features and Benefits

- Made of high carbon steel.
- Individually packed in aluminum foil with VPI paper protection.
- Supplied sterile in boxes of 100.
- Gamma sterile.
- 5 years shelf life.
- British Standard BS 2982:1992.
- Blade is 65mm in length.

ML-00329
\$21.50

100 PER BOX

KAI BIOPSY PUNCH WITH RIBBED HANDLE



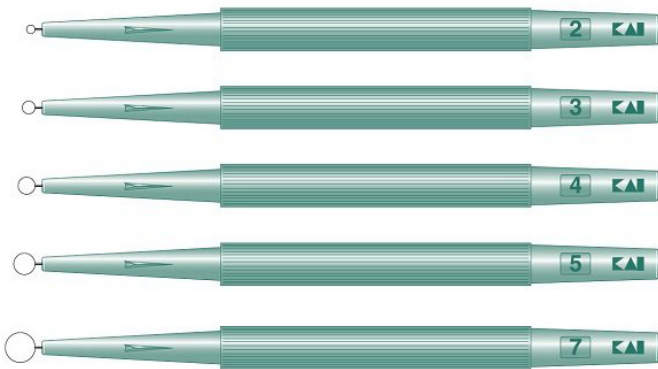
Features and Benefits

- Seamless stainless steel sharp cutting edge.
- Ribbed handle for sure grip and control.
- Size embossed on each punch for easy identification.
- Sterile and ready to use.
- Disposable.
- Wide range of sizes.

Code	Size	Pack Quantity	Price
SI-BP15F	1.5mm	20	\$69.00
SI-BP20F	2mm	20	\$69.00
SI-BP25F	2.5mm	50	\$69.00
SI-BP30F	3mm	20	\$69.00
SI-BP40F	4mm	20	\$69.00
SI-BP50F	5mm	20	\$69.00
SI-BP60F	6mm	20	\$69.00
SI-BP80F	8mm	20	\$69.00

KAI DERMAL CURETTE

STERILIZED WITH ETHYLONE OXIDE



Features and Benefits

- Stainless steel sharp cutting edge for soft or weak tissue.
- Size embossed on each curette for easy identification.
- Visible field of surgery.
- Ribbed handle for sure grip and control.
- Disposable.
- 5 year shelf life.

Code	Size	Pack Quantity	Price
SI-MK402	2mm	20	\$96.30
SI-MK403	3mm	20	\$96.30
SI-MK404	4mm	20	\$96.30
SI-MK405	5mm	20	\$96.30
SI-MK407	7mm	20	\$96.30

CONMED HYFRECATORTIPS

BLUNT / SHARP WITH STERILE & NON STERILE OPTIONS



Code	Tip	Sterility	Colour	Pack Quantity	Price
PC-710112	Blunt	Non-Sterile	Black	100	\$125.00
PC-710012	Sharp	Non-Sterile	White	100	\$125.00
PC-71018	Blunt	Sterile	Black	50	\$125.00
PC-71008	Sharp	Sterile	White	50	\$125.00



BASTION GLOVES LATEX POWDER FREE



Box of 100
IP-BNG2832-B
\$7.95

Carton of 1000
IP-BNG2832
\$73.60



Features and Benefits

- Powder-free Latex Gloves offer a unique blend of comfort and protection.
- Colour: Beige.
- Ambidextrous.
- Beaded Cuff provides additional strength and prevents liquid roll off.
- Excellent strength and tactility.
- Silicone free.
- Micro textured finish allows for outstanding wet and dry grip.
- Resistant to puncturing, these gloves serve as an optimal barrier against biological contaminants.

BASTION GLOVE NITRILE SOFT

Box of 100
IP-BNG7833-B
\$7.10

Carton of 1000
IP-BNG7833
\$69.00



Features and Benefits

- New thin nitrile technology reduces hand fatigue and provides a close fit for increased tactile sensitivity, with a fully textured finger for increased grip and precision.
- Examination gloves.
- Comfortable beaded cuff.
- Latex free.
- Excellent puncture resistance and strength.
- Superior barrier protection over latex and vinyl.
- Nitrile gloves are fully Micro Textured for excellent wet and dry grip.
- Nitrile Soft and Ultrasoft a softer and thinner formulation for improved feel and sensitivity, with micro textured fingers for excellent wet and dry grip.
- Nitrile Long Cuff provides greater arm protection.
- HACCP Certified.

SENSIFLEX PLUS LATEX SURGICAL GLOVES



Box Contains 50 Pairs

\$41.60

Buy 4+ Boxes

\$39.90

Features and Benefits

- Latex. Powder free. Sterile.
- Versatile application.
- Enhanced Multilayered Polymer Coating (MLPC).
- Micro-textured to enhance slip-resistance, extra grip, and control during surgical procedures.
- Anatomical design to follow natural finger shapes.
- Supreme donning enable double & wet hand donning.
- AQL 0.65 Final shipment inspection.
- Beaded cuffed with good grip prevents cuff roll down.
- Undetectable protein level (Low risk of class I allergy)
- Excellent finger sensitivity with consistent grip.
- Sterilization by irradiation for guaranteed sterility.
- Suitable for all types of surgery.

Code	Size
MLSP55	5.5
MLSP60	6
MLSP65	6.5
MLSP70	7
MLSP75	7.5
MLSP80	8
MLSP85	8.5
MLSP90	9

FINESSIS ZERO SURGICAL GLOVES



Box Contains 50 Pairs

\$99.80

Buy 4+ Boxes

\$96.50

Features and Benefits

- Latex free. Powder free. Accelerator free. Sterile.
- Next generation of surgical gloves.
- Uses ZERO accelerators in manufacturing process.
- Double glove with Finessis Corium as an underglove to provide perfect fit and impermeable barriers in surgery.
- Highest accepted quality level AQL 0.10.
- Lowest risk surgical glove for Type I and IV allergies.
- Made from FLEXYLON - High performance elastomer built by Molecular Layer Technology.
- High electrical resistance.
- Ultra low stress and feel fit design.
- Sterilisation by irradiation for guaranteed sterility.

Code	Size
MLFZ55	5.5
MLFZ60	6
MLFZ65	6.5
MLFZ70	7
MLFZ75	7.5
MLFZ80	8
MLFZ85	8.5
MLFZ90	9

FINESSIS CORIUM MICRO THIN SURGICAL GLOVES



Box Contains 50 Pairs

\$99.80

Buy 4+ Boxes

\$96.50

Features and Benefits

- Latex free. Powder free. Accelerator free. Sterile.
- Supreme tactility for double gloving and microsurgeries.
- Used as an underglove with Finessis Zero for a perfect fit and impermeable barriers in surgery.
- Designed to deliver enhanced touch sensitivity.
- Highest Accepted Quality Level AQL 0.10.
- Made from FLEXYLON. High performance elastomer built by Molecular Layer Technology.
- Ultra low stress design. Exerts half the stress compared to latex and synthetic latex gloves.
- High electrical resistance. Sterilisation by irradiation for guaranteed sterility.
- Suitable for Microsurgery, Ophthalmic Surgery, Plastic Surgery,

Code	Size
MLFC55	5.5
MLFC60	6
MLFC65	6.5
MLFC70	7
MLFC75	7.5
MLFC80	8
MLFC85	8.5
MLFC90	9

SAYCO MICRO SUTURE PACK

- DISPOSABLE AND STERILE



SI-BSU901

\$7.90

Features and Benefits

- Iris Scissors (Straight).
- Adson Tissue Forceps 1x2 Teeth.
- Derf Needle Holder.

SAYCO SUTURE PACK

WITH SH/SH SCISSORS

- DISPOSABLE AND STERILE



SI-BSU903

\$7.90

Features and Benefits

- 12.5cm Wagner Scissor sh/sh (Straight).
- 12cm Adson Tissue Forceps 1x2 Teeth.
- 15cm Mayo Hegar Needle Holder.

SAYCO IRIS SCISSORS

STRAIGHT 11.5CM

- DISPOSABLE AND STERILE



SI-BSU300

\$1.95

SAYCO DRESSING SCISSORS - SINGLE

STRAIGHT 12.5CM (SHARP/BLUNT)

- DISPOSABLE AND STERILE



SI-BSU304

\$2.60

SAYCO DRESSING SCISSORS - 10 PACK

STRAIGHT 12.5CM (SHARP/BLUNT)

- DISPOSABLE AND STERILE



SI-BSU304-10PK

\$25.00

SAYCO MAYO HEGAR NEEDLE HOLDER

15CM

- DISPOSABLE AND STERILE



SI-BSU401

\$3.90

SAYCO ADSON TISSUE FORCEP

1X2 TEETH 12CM

- DISPOSABLE AND STERILE



SI-BSU103

\$1.98

SAYCO ADSON TISSUE FORCEP

1X2 TEETH MICRO 12CM

- DISPOSABLE AND STERILE



SI-BSU105

\$2.05

IRIS SCISSORS

STRAIGHT 11CM (DISSECTING/DELICATE) ARMO
- REUSABLE AND NON-STERILE



RI-A3152

\$19.85

IRIS SUPERCUT SCISSORS

CURVED 11CM ARMO
- REUSABLE AND NON-STERILE



IN-AS3153

\$63.90

SURGICAL SCISSORS

STRAIGHT 13CM (SHARP/BLUNT) ARMO
- REUSABLE AND NON-STERILE



RI-A3301

\$16.97

IRIS SCISSORS

STRAIGHT 11CM (DISSECTING/DELICATE) KLINI
- REUSABLE AND NON-STERILE



IN-K130410

\$34.75

ARMO

SUPERIOR DEPENDABLE QUALITY
PAKISTAN STEEL MANUFACTURED IN PAKISTAN.

FINE QUALITY FORGING AT COST
EFFECTIVE PRICING

KLINI

THEATRE QUALITY
PAKISTAN STEEL MANUFACTURED IN GERMANY.

GERMANY QUALITY MAKE AT COST
EFFECTIVE PRICING

HIPP

STATE OF THE ART THEATRE QUALITY
GERMAN STEEL MANUFACTURED IN GERMANY.

STATE OF THE ART RANGE CRAFTED FROM THE
FINEST GERMAN STAINLESS STEEL FORGING.

SURGICAL SCISSORS

STRAIGHT 13CM (SHARP/BLUNT) KLINI
- REUSABLE AND NON-STERILE



SI-K100213

\$34.50

IRIS SCISSORS

STRAIGHT 11CM (DISSECTING/DELICATE) HIPP
- REUSABLE AND NON-STERILE



IN-HI30411

\$62.60

IRIS SUPERCUT SCISSORS

CURVED 11CM HIPP
- REUSABLE AND NON-STERILE



IN-SI30511

\$125.90

SURGICAL SCISSORS

STRAIGHT 13CM (SHARP/BLUNT) HIPP
- REUSABLE AND NON-STERILE



IN-HI00213

\$54.60

ADSON TISSUE FORCEPS
 1X2 TEETH STANDARD 12CM ARMO
 - REUSABLE AND NON-STERILE



RI-A2600
\$17.60

ADSON DRESSING FORCEPS
 STANDARD 12CM ARMO
 - REUSABLE AND NON-STERILE



SI-A2401
\$15.90

ADSON TISSUE FORCEPS
 MICRO 1X2 TEETH 12CM ARMO
 - REUSABLE AND NON-STERILE



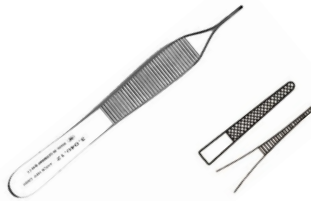
RI-A2559
\$22.60

ADSON TISSUE FORCEPS
 1X2 TEETH STANDARD 12CM KLINI
 - REUSABLE AND NON-STERILE



IN-K315012
\$26.40

ADSON DRESSING FORCEPS
 STANDARD 12CM KLINI
 - REUSABLE AND NON-STERILE



IN-H304012
\$55.45

ADSON TISSUE FORCEPS
 MICRO 1X2 TEETH 12CM KLINI
 - REUSABLE AND NON-STERILE



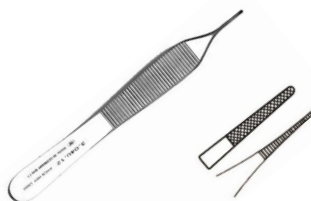
IN-K315812
\$22.15

ADSON TISSUE FORCEPS
 1X2 TEETH STANDARD 12CM HIPPI
 - REUSABLE AND NON-STERILE



IN-H315012
\$55.55

ADSON DRESSING FORCEPS
 STANDARD 12CM HIPPI
 - REUSABLE AND NON-STERILE



IN-H304012
\$42.00

ADSON TISSUE FORCEPS
 MICRO 1X2 TEETH 12CM HIPPI
 - REUSABLE AND NON-STERILE



IN-H315812
\$54.35

IRIS SCISSORS

CURVED 11 CM (DISSECTING/DELICATE) ARMO
- REUSABLE AND NON-STERILE



RI-A3153

\$18.06

IRIS SCISSORS

CURVED 11 CM (DISSECTING/DELICATE) HIP
- REUSABLE AND NON-STERILE



IN-HI30511

\$72.86

IRIS SUPERCUT SCISSORS

STRAIGHT 11 CM HIP
- REUSABLE AND NON-STERILE



IN-SI30411

\$124.70

MAYO HEGAR NEEDLEHOLDER

14CM ARMO
- REUSABLE AND NON-STERILE



SI-A4201

\$26.20

Features and Benefits

- ARMO medical instruments are crafted from the finest quality forgings and made in state of the art manufacturing facilities.
- Crafted with high quality Pakistan Steel.

MAYO HEGAR TUNGSTEN CARBIDE NEEDLEHOLDER

14CM KLINI
- REUSABLE AND NON-STERILE



IN-KTC900214

\$104.30

Features and Benefits

- A ratcheted, finger ring instrument, used for many types of surgical procedures.
- Commonly used with larger, heavier suture needles, due to its wide jaws.

MEDILOGIC
STERILISATION POUCH



Features and Benefits

- Pre-folded, quick, and easy sealing.
- Toxic-free, lead-free process indicators for Steam, Ethylene Oxide, and Formaldehyde sterilisation.
- Superior microbial barrier with medical grade paper.
- Superior resistance in wet strength.
- Excellent performance, especially in Steam sterilisation.
- Transparent PET/ CPP complex film.
- Clean and fibre-free opening.
- Triple band seal and one extra reinforcing seal for better package integrity.
- Internal and external indicators.
- 180 day shelf life after sterilised.

Code	Size	Pack Quantity	Price
MLSP51	57mm x 100mm	200	\$9.95
MLSP91	90mm x 135mm	200	\$8.85
MLSP72	70mm x 230mm	200	\$9.95
MLSP92	90mm x 230mm	200	\$12.00
MLSP12	135mm x 255mm	200	\$16.50
MLSP13	190mm x 330mm	200	\$32.50
MLSP33	300mm x 380mm	200	\$55.00

LOGIPAD UNDERPAD

5PLY UNDERPAD



Features and Benefits

- A highly absorbent, waterproof, and disposable underpad designed for a wide range of clinical applications such as surface protection of treatment tables, chairs, beds, and benches.
- Consists of 5 layers of sealed permeable tissue to ensure maximum absorbency and has a waterproof backing.
- Folded for convenient storage.

Code	Size	Pack Quantity	Price
MLLP46	40 x 60cm	300	\$42.50
MLLP43	40 x 30cm	600	\$59.50

HIGHLY
ABSORBENT

HIGH QUALITY
& ECONOMICAL

FACIAL TISSUES

BOX OF 200 - CARTON (32 BOXES)



ONLY
\$1.97
PER BOX

SOFT & DURABLE - 2PLY

MLFTCT

\$62.95

LOGIROLL BED ROLL

PERFORATED PAPER ROLLS FOR BED PROTECTION



PERFORATED
EVERY
38CM

Features and Benefits

- The Logiroll bed rolls are perforated paper rolls for bed protection.
- Logiroll consists of a 2-ply, micro embossed, glued tissue to create a durable and plush surface protection layer.
- Logiroll can be used as surface protection in a range of clinical situations.
- Clinical situations include: Examination Couches, Stretcher Sheet, First Aid Room Bed Cover; and Trolley Covers.
- A 50m long paper roll that's perforated every 38cm.

Code	Size	Pack Quantity	Price
MLUR49	49cm x 50m	6	\$59.50
MLUR59	59cm x 50m	6	\$69.50

SOFT &
STRONG

LOGITOWEL

SLIM HAND TOWEL



DELUXE HAND TOWEL



PREMIUM
QUALITY

Features and Benefits

- The Logitowel Hand Towels are a premium quality interleaved hand towel that creates a great drying experience.
- The Logitowel offers excellent absorbency and a consistent quality with each sheet.
- These hand towels have a soft texture, mixed in with waterproof durability, and has phenomenal absorbency on the first wipe.
- One of the highest quality and most economical HandTowels on the market.

Code	Type	Size	Pack Quantity	Price	Buy 4+
MLLTSL	Slim	19cm x 29.5cm	24	\$43.50	\$40.00
MLLTDL	Deluxe	24cm x 23cm	16	\$52.50	\$49.70

SUITS STANDARD
DISPENSERS

LOGITRACE

MONITORING FOAM ELECTRODE WITH STAINLESS STEEL SNAP CONNECTOR

EXCEPTIONAL VALUE



Code	Pack Quantity	Price
MLLTF100-E	Pack - 100	\$18.60
MLLTF100	Carton - 1000	\$169.00
MLLTF100	4+ Cartons	\$161.00 ea

Features and Benefits

- Logitrace Monitoring Electrode Foam Hydrogel is ideal for Resting and Monitoring ECGs.
- Consists of stainless steel snap connector, conductive hydrogel, and a foam backing with an excellent adhesive, producing an electrode that performs everytime.
- The exceptional adhesion and clear traces ensures no repeat testing.
- Silver chloride and stainless steel snap connector ensures a clear trace.
- Superior foam adhesion is able to conform to body contours.
- Electrode size: 40mm x 36mm.
- Latex free.

COMBISCREEN PLUS

11SYS URINALYSIS STRIPS



DI-94150

\$44.90

BUY 3+

\$42.50

FAST & ACCURATE



150 STRIPS PER PACK

CAN BE USED WITH URILYZER 100 PRO ON PAGE 32!

Features and Benefits

- For POC and Healthcare Professionals. Precise and easy to use.
- CombiScreen PLUS is compatible with Urilyzer 100 Urinalysis Machine.
- Measures: Glucose, Ascorbic Acid, Ketones, Protein, pH, Blood, Nitrites, Leukocyte, SG, Bilirubin, Urobilinogen.
- Reliably screens for: UTI, Diabetes, Kidney, and many other disorders.
- Incorporates an integrated ascorbic acid protection - which gives reliable results in urine specimens containing ascorbic acid.
- CombiScreen PLUS is the product of many years of development and improvements.
- Excellent sensitivity: Detects low level pathological changes in urine.
- High quality can and closure with desiccant prevents deterioration through moisture.
- Can be stored for upto 2 years even after the can has been opened.
- Quality standards and modern ISO 9001 and ISO 14385 accredited state-of-the-art automated production facility ensures highest quality standards. CE marked for IVD use.
- Distinct colour changes from negative to positive and parallel colour matching makes interpretation simpler and reduces the potential for error.
- Single reaction time - all pads are read after 60 seconds reducing error potential. (Leukocytes 60-120 seconds).

MEDILOGIC

PATIENT GOWN



MLPGREG

\$56.50

Features and Benefits

- Regular size.
- Navy blue.
- No sleeve patient gown.
- 100 Gowns Per Box.

MEDILOGIC

ISOLATION GOWN



MLIGM100

\$93.50

Features and Benefits

- Regular size.
- Navy blue.
- Long sleeve Isolation gown.
- 100 Gowns Per Box.

10 TOP TIPS FROM AMI ASSIGAL ON GROWING YOUR PRACTICE

One of the concerns that medical practitioners often have is continually attracting new patients whilst maintaining loyalty from return customers. Like any business, marketing techniques can help you reach these long-term and short-term objectives.

The following Marketing tips can assist you in getting ahead, without getting overwhelmed and without spending a great deal of money.

1. Feature a Responsive Website

According to one Google survey, over 60% of individuals exit a website when it is not designed to be mobile-friendly. Therefore, it is crucial that you work with a web designer who is well versed in responsive website design. Not only should visitors be able to easily access the site, navigation should be user-friendly. Featuring a responsive website will also boost your SEO rankings as Google prefers this type of website design over a standard format.

2. Invest in SEO

Speaking of SEO, you need to invest in search engine optimisation (SEO). That way, patients can easily find your site online. If you want to expand your reach, you should invest money in SEO. A good indicator if money needs to be spent here is by searching yourself on google and see where you come up, if you are not in the first few practices then its time for SEO. Add fresh content to your site on a regular basis. SEO and the addition of new content go hand-in-hand in enhancing your influence on the web.

3. IT integration – Online bookings is a must

Patients want easily accessible healthcare and this means it starts with the appointment booking process. If they enter your website

and can't find how to book online then already in their eyes, its too hard.

Don't forget that whilst this is a tool to market your practice and its services it will also take away phone calls from the front desk freeing them up to work on other things in the clinic.

4. Take a Patient-centric Approach

Marketing also extends to traditional customer experience. In order to increase word-of-mouth referrals and underscore your online image, you need to be patient-centric. Everything you do in your practice should be focused on providing your patients with a pleasant experience. This is all part of your brand.

This one is a good one, you can market 'till the cows come home' but if they come for one appointment and have a bad experience they wont come back. So the money we spent and the time taken to market the practice gained a very little return.

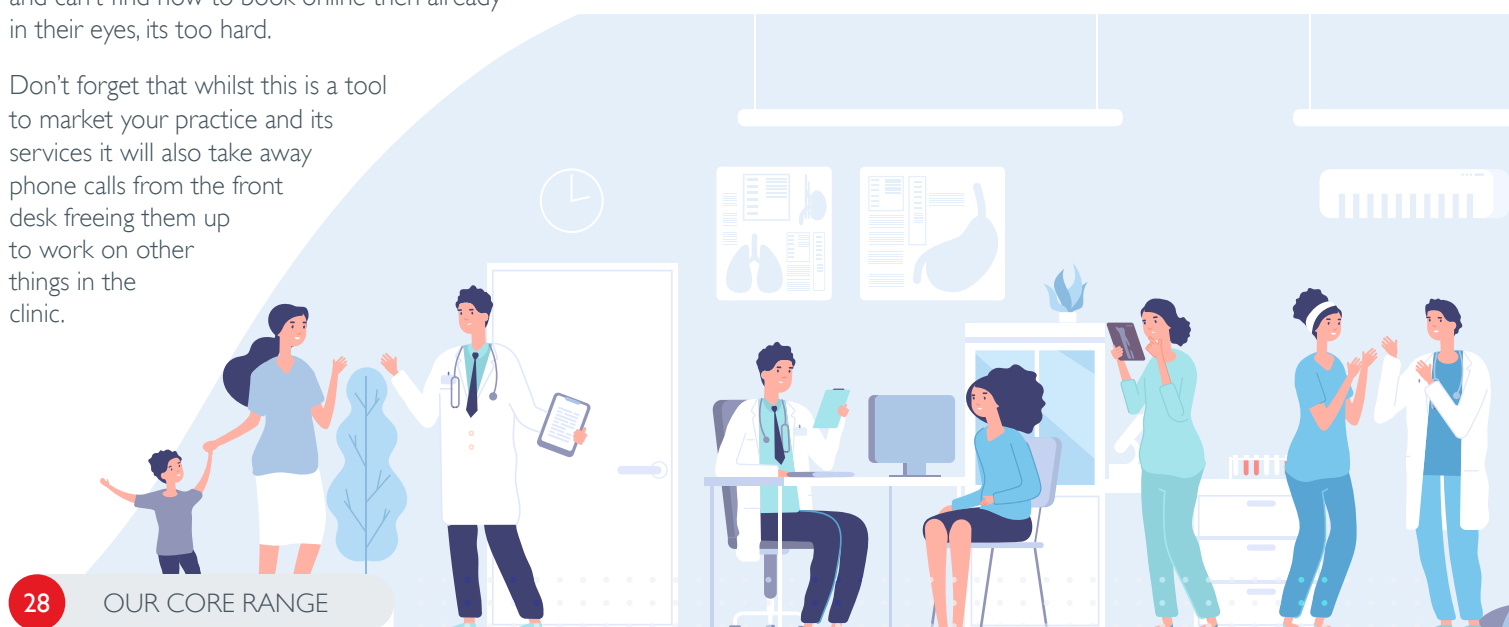
5. Target Specific Patients in Your Practice

Reminders for patients eligible for health assessments and recalls for patients that have been in for a care plan and are due for a review, are two ways to re-generate your patient base. A review on both of these processes are important, it is easy to forget to put a patient on a recall but the impact to the practice can be significant.

The question is do we spend more on marketing or do we spend nothing and ensure we continually re-generate our patient base?

6. Develop Your Brand

Creating a brand image is also important. Develop your brand by posting relevant information on a consistent basis on your website as well as on social media and in medical journals. By taking this approach, you will enhance your reputation online and gain more credence as an industry expert. Not all of your patients will follow you on socials so why not print a few in house posters or have pamphlets with your blogs on them to give to patients. Try a newsletter to keep everyone updated.



7. Provide Pricing Information Upfront

About 80% of patients want to know the cost for a particular service before they schedule a consult. By providing this information upfront, you can increase your number of appointments. Statistics show that patients who know the cost are about 40% more likely to go ahead with treatment.

8. Add Citations Online – a sidenote.

When marketing your practice on the web, also make sure you add citations on related websites. Citations can be used to support your ranking for keywords in the search results.

Information from your local PHN, suppliers, AMA, RACGP and other bodies are a great resource for keeping the practice staff up to date but also to gain some education for patients on the industry updates too.

9. Video Messaging

Video content is one of the most powerful ways to reach and engage your audience. Make medical messages more interesting by posting them as videos – videos that can be easily viewed on a mobile phone and on a TV in the waiting room.

10. Use E-mail Marketing

Send out helpful and periodic updates about general health care and practice activities by e-mail as well.

For any modern practice it's essential to stay competitive by staying on top of industry changes as well as coming up with new ways of increasing exposure and improving your patients' experience.

Making effective use of the above tips will make you stand out from your competition and increase your word-of-mouth referrals and overall presence on the web.

And remember...while there are hundreds of methods to promote your medical practice, none of them can compete when it comes to your underpinning reputation. Established practices still find the most reliable source for new patients comes from old-fashioned word-of-mouth referrals.

If your current patients are happy with your medical services, they will naturally spread the word to friends and family. In this case, they normally use online reviews to express their satisfaction.



AMI'S BIO:

With an MBA specialising in finance and a Diploma in Practice Management, Ami is a driven & affable Healthcare consultant.

With a passion for building relationships and helping businesses to grow, backed by a wealth of experience in all aspects of the medical centre including HR, OH&S, Business Management, Finance, Recruitment, strategic planning and sales & acquisitions including Medical Centre start-ups, Ami is well-equipped to help you achieve your business goals.

Engaging with Ami will give you perspective over all aspects of your business ensuring the practice vision is upheld and the strategic plan achieved, whether this be through expansion, coaching or mentoring, or increased services and room utilisation through recruitment.

Contact Ami today to find out how you can grow your business and advance your career

CONTACT DETAILS:

 +61 (3) 8 606 0340
 ami@practicepartners.com.au
 <https://practicepartners.com.au/>

 Head Office Level 5, 356 Collins Street, Melbourne VIC 3000 Australia



QRS ORBIT PORTABLE SPIROMETER

DE-Z70000101

\$1795.00

**ACCURATE &
RELIABLE**



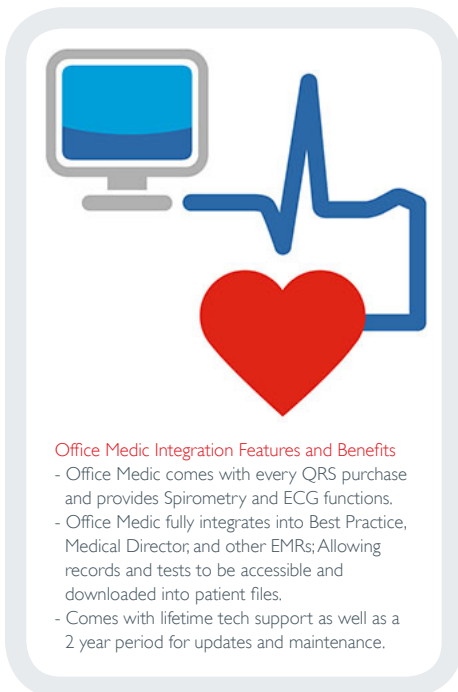
Features and Benefits

- A fully functional portable spirometer which connects directly to your PC, laptop, or tablet.
- The orbit saves time and eliminates contamination as it comes pre-calibrated with disposable mouthpieces and nose clips.
- A market leader in portable spirometry, turning every computer in your practice into a potential spirometer.
- Simple, quick, and easy to use.
- The Office Medic software features customizable reports, test overlays, 12+ predicted equations, lung age calculation, and 25+ parameters.
- FVC, Pre/Post Testing, Flow Volume Loop, MVV, and SVC tests can be performed in conjunction with Office Medic.

Office Medic and QRS Spirometry Features

- Various indications for use. Can adjust settings such as Patient Population (Male/Female, Pediatric to Adult), Device Functionality (Diagnostic Spirometry), Spirometric Parameters (FVC, MVV, SVC, FEF), Environment of Use (Hospital, Clinical, Home Use).
- Test session grades. Each test session is given a grade which indicates the degree of confidence in the results.
- Flexible spirometry reports and printing options such as Full Page Graphs, Overlay Pre Tests, Custom Report Header, FVC Reports, Optional Parameters.
- Feedback messages on the Effort Quality of the patient's blow. For example,

"Don't Hesitate" if BEV > 5% of the FVC
 "Blast out faster" if PEFT > 120m/sec
 "Blow out longer" if FET < 6.0 s and
 "Blast out harder" if PEF \neq 1.0 L/s
 "Deeper Breath" if PEV6 \neq within 150 mL
 No feedback if effort meets criteria.
 "Good test session" if 2 tests are accepted



Office Medic Integration Features and Benefits

- Office Medic comes with every QRS purchase and provides Spirometry and ECG functions.
- Office Medic fully integrates into Best Practice, Medical Director, and other EMRs; Allowing records and tests to be accessible and downloaded into patient files.
- Comes with lifetime tech support as well as a 2 year period for updates and maintenance.

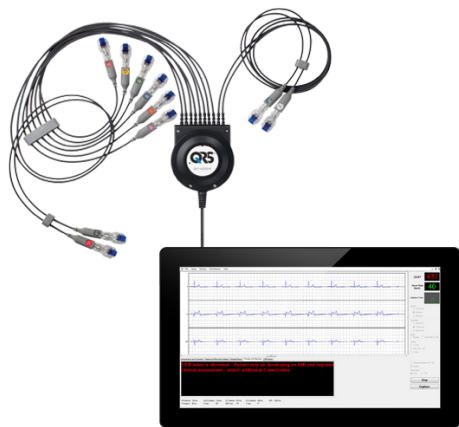
Office Medic and QRS ECG Features

- Various indications for use (Receipt, Storage, Viewing, Printing, and Interpretive Analysis of 12 channel simultaneous ECGs). Can adjust settings such as Patient Population (Adult Male/Female), Environment of Use (Hospital, Clinical, Home Use).
- ECG Analysis Program. Based on algorithms developed by Cardionics S.A. Office Medic provides analysis and interpretation of 12 channel ECGs.
- Provides analysis of amplitudes, duration and morphologies of the ECG waveform, based upon the parameters / calculations of the electrical axis and relationship between leads.
- The interpretation provided by Office Medic software is a great tool which assists medical professionals in making a clinical diagnosis. The interpretation can be edited and commented.
- ECG Reports and Printing Options such as: Single Lead Report, 3x4 Simultaneous, 3x4 Sequential, Average Complexes, 6x1 Format (2 pages), 6x2 Format (1 page), Measurements Table, Include Interpretations/Comments, Speed & Sensitivity, and Minor Grid.

QRS PC-BASED UNIVERSAL ECG

DE-Z70000301

\$2195.00



Features and Benefits

- PC-based. 3 year warranty.
- Extensive patient memory.
- 12 channel with 10 lead with connectors that enable tab or clip use.
- QRS PC-based 12 channel ECG software.
- Offers 8 report options which are transferable to PDF, JPEG, or TIFF formats for easy incorporation into any EMRs system.
- Available in seven languages: English, German, Spanish, Italian, French, Portuguese, and Japanese.



WELCH ALLYN
3.5V LITHIUM ION HANDLES DIAGNOSTIC SET
WITH MACROVIEW / COAXIAL AND LED / COAXIAL AND HALOGEN



Macroview Otoscope
PanOptic Ophthalmoscope
With LED Lamps.

DE-97206MVPSL
\$1045.00



Macroview Otoscope
Coaxial Ophthalmoscope
With LED Lamps.

DE-97206MVSL
\$695.00



Macroview Otoscope
Coaxial Ophthalmoscope
With Halogen Lamps.

DE-97206VSM
\$795.00

Features and Benefits

- Advances in instrument technology, long-lasting power sources, and new lighting technology that include LED options, your diagnostic tools can help you perform a quick, efficient, and comprehensive exam.
- Choose PanOptic™ or Traditional Ophthalmoscope.
- MacroView™ Otoscope.
- 3.5V Handle with a Charging Dock.

WELCH ALLYN
POCKET PLUS LED SET
- ONYX / BLACK

DE-92880BLK
\$399.00



Features and Benefits

- The Pocket Plus LED Otoscope is the most durable, pocket-style otoscope, and ophthalmoscope on the market today, based on rigorous drop text against leading competitors.
- Welch Allyn SureColor LED Lamp technology provide the exact light you need for detailed eye, ear; and fundus examinations.
- Portable and light weight, designed for the comfort and control you need.
- 5 year warranty on instrument head.
- Colours Available: Black, Purple, White, and Blue.

WELCH ALLYN THERMOSCAN
PRO 6000 EAR THERMOMETER
WITH SMALL CRADLE



DE-06000200
\$259.00

Features and Benefits

- Innovative PerfectTemp™ Technology adjusts for variability in probe placement.
- ExacTemp™ Technology detects stability of the probe during measurement.
- Designed for quick & accurate readings.
- 60 second pulse timer assists with manual measurement of pulse rate, respiration.

ABN CLASSIC ADULT DUAL HEAD STETHOSCOPE



Features and Benefits

- ABN Classic Stethoscope Stainless Steel is a professional stethoscope with outstanding durability.
- Superior acoustic response.
- Chestpieces are precisely machined from durable surgical grade stainless steel.
- Colour co-ordinated non-chill rings and diaphragm retaining ring for extra patient comfort.
- Supplied with two extra pairs of soft deluxe spare ear tips and one spare diaphragm.
- Overall length is 770mm.
- Colours Available: Black, Navy, Burgundy, Green, Grey, Light Blue.



1 Unit

\$72.00

Code	Colour
DE-SGSS021BK	Black
DE-SGSS021NB	Navy
DE-SGSS021BD	Burgundy
DE-SGSS021HG	Green
DE-SGSS021GY	Grey
DE-SGSS021LB	Light Blue

LITTMAN CLASSIC III STETHOSCOPE



DE-5620

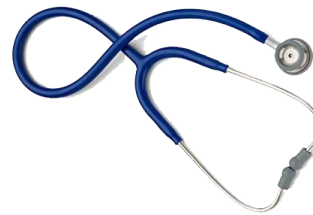
\$149.00

Features and Benefits

- Stainless Steel Chestpiece.
- Two sided chestpiece with tunable diaphragms on both the adult and paediatric sides.
- Single piece tunable diaphragm is easy to attach and clean because its surface is smooth without crevices.
- Paediatric side converts to a traditional open bell by replacing single piece diaphragm with a non-chill rim.
- Next generation tubing provides longer life due to improved resistance to skin oils and alcohol. Less likely to pick up stains.
- Five year warranty.

FAVOURITE

WELCH ALLYN ADULT DOUBLE HEAD STETHOSCOPE



1 Unit

\$96.90

Features and Benefits

- Excellent for general auscultation and blood pressure.
- Five year warranty.
- Colours Available: Black, Navy, Burgundy, Blue, Green.



Code	Size
DE-5079135	Black
DE-5079137	Navy
DE-5079139	Burgundy
DE-5079289	Blue
DE-5079285	Green

URINE ANALYZER URILYZER 100 PRO



ULO100

\$1589.00



Features and Benefits

- The first urine strip analyzer in the world to have Positive Patient ID!
- Easy to use yet sophisticated urinalysis analyzer for standardizing and automating urinalysis in hospital wards, outpatient clinics, GP practices, and laboratories.
- Used in combination with CombiScreen SYS PLUS urine strips, the automated urinalysis system provides accurate results in only 1 minute.
- A urinalysis machine that adds intelligent features to assist POCT coordinators manage and control devices including sophisticated operator management, QC, and connectivity capabilities to help meet the growing demands for compliance management and data capture.
- Smart and safe operation.
- Extended connectivity capabilities.
- Brand new POCT-features.
- Built-in thermal printer for easy printout.
- 12 Month Manufacturer's Warranty.
- Manufactured in Germany.



FOR USE WITH COMBISCREEN STRIPS ON PAGE 26!

FAST & ACCURATE

OMRON PROFESSIONAL DIGITAL BP MONITOR KIT

DE-HEM907KIT

\$659.00



3 CUFFS INCLUDED

Features and Benefits

- High quality, simple to use and accurate kit, popular in primary and aged care.
- Clinically validated for accuracy, designed for clinical use in professional settings such as General Practitioners, Hospitals, and other Medical Professionals.
- Incorporates four unique operation modes: Single mode for once off measurements, average mode for an average of 2 or 3 measurements, manual mode for auscultation method and check mode for comparison of pressure settings between the Omron HEM-907 and a sphygmomanometer.
- Rechargeable batteries come included, along with AC adaptor and three cuff sizes.
- Automatic cuff inflation and deflation.
- Accuracy Pressure: Within +/- 4mmHg.
- Accuracy Pressure: Pulse Rate: Within +/- 5% of reading.
- Measurement Range: Pressure: 0 to 299mmHg.
- Measurement Range: Pulse Rate: 30 to 199 beats per minute.

WELCH ALLYN PROBP 2000 DIGITAL BLOOD PRESSURE DEVICE

- AVAILABLE AS BATTERY POWERED OR POWER SUPPLY

Code	Power	Price
DE-2000	Battery - 4 AA	\$229.00
DE-2000-P	Power Supply	\$305.00



EXCELLENT VALUE

Features and Benefits

- A fast and accurate automated blood pressure device, designed for accuracy, reliability, and speed.
- The ProBP 2000 uses Welch Allyn SureBP technology and Flexiport Cuff technology to enhance patient exams.

Welch Allyn SureBP technology:

- Blood pressure readings are captured more comfortably on inflation and takes about 20 seconds.
- Meets AAMI standards for blood pressure accuracy.
- One-button touch triggers the device to start capturing on cuff inflation.
- 97% completion rate in the presence of motion.

Welch Allyn Flexiport Blood Pressure Cuff Technology:

- Unique 'snap-fit', single-point connection helps remove the hassle of traditional cuff tubes and connectors, to better support a busy workflow.
- The ProBP 2000 is compatible with FlexiPort Reusable cuffs, ranging from child up to large adult and thigh (12-55cm range).
- When combined with SureBP technology, helps capture readings on inflation in about 20 seconds.

WELCH ALLYN PROBP 3400 HANDHELD SURE BP MONITOR

DE-34XFHT6

\$699.00



INDUSTRY LEADING

Features and Benefits

- Small enough to fit in your hand, with the same accuracy as Welch Allyn industry-leading vital signs devices.
- Smart choice for clinicians in just about every medical setting.
- Accurate, reliable, connected blood pressure readings in the palm of your hand.
- Hospital grade SureBP™ NIBP technology enables fast, accurate 15 second BP readings improving patient comfort.
- USB-wired technology enables integration to select EHR/EMR systems.
- Compatible with Welch Allyn cuff sizes from small child to thigh.
- Lithium ion battery technology delivers upto 100 readings on a single charge.
- Configurable to match your workflow and specific patient needs.
- Meets AAMI Standards, awarded BHS A/A rating.
- Mercury and latex free for clinician and patient safety.
- Obtains accurate readings, even in the presence of some motion or weak pulse.
- Inclusions: One Adult Cuff, One Large Adult Cuff.
- Optional Accessories: Desktop mount, Wall mount.



**WELCH ALLYN
CONNEX SPOT MONITOR
WITH SUREBP NIBP/NONIN SP02/PRO 6000 EAR THERMOMETER**

**DE-71WE-6
\$1895.00**



BLOOD PRESSURE, SP02 & THERMOMETRY ALL IN ONE DEVICE

Features and Benefits

- Features an easy-to-use, vivid touchscreen display and provides accurate vital signs measurement including blood pressure averaging, spot checking, interval monitoring, and custom scoring across patient populations.
- The Accessory Power Management Stand with WhisperDrive™ technology features additional power backup, providing up to 17 hours of on-time, alleviating charge frequency.
- SureBP® technology can provide BP in only 15 seconds.
- Connex Scoring App calculator for custom protocols (e.g. NEWS, MEWS).
- BP averaging to help ensure accurate hypertension diagnosis.
- Supports resident list workflows for long-term care settings.
- Braun ThermoScan® PRO 6000 Thermometry.
- Connects wirelessly to more than 90 leading EMRs.
- Nonin SpO2 technology.
- Scale connectivity to Detecto, Health o meter® and SECA scales.
- Mobile stand option includes work surface with integrated battery for extended usage.
- In order to use and charge the device, a mobile stand, desk or wall mount must be purchased.

**MOBILE WORK SURFACE STAND
TO SUIT CONNEX SPOT MONITOR**

**DE-7000-MWS
\$495.00**



Features and Benefits

- An accessory for the Welch Allyn Connex Spot Monitor.
- It provides a work surface, storage, and cable management to ensure a neat and organized unit.
- Suitable for any clinical setting.

**DESKTOP STAND
TO SUIT CONNEX SPOT MONITOR**

**DE-7000-DST
\$145.00**



Features and Benefits

- An accessory for the Welch Allyn Connex Spot Monitor.
- Provides a carry handle.
- Great if the device doesn't need to be moved around much.

**WELCH ALLYN
DURASHOCK MODEL DS66 ANEROID SPHYG
WITH ADULT CUFF**

DE-509827
\$189.00



Features and Benefits

- Features an innovative gauge with a smooth trigger-style air release valve and ergonomic design with soft plastic inserts at key touch points for comfort and ease.
- Remains in calibration longer than traditional aneroids, providing more accurate readings over time and a lower lifetime cost, helping to improve practice efficiencies and your bottom line.
- Gear Free DuraShock™ technology.
- Shock resistant - withstands a 30m drop.
- Jewel movement for longer life.
- Laser engraved dial face for accuracy.
- Certified accuracy to +/- 3mmHg.
- 15 year calibration warranty; 10 years warranty.
- Soft comfort grip and trigger deflation valve for smooth, one finger operation.
- Unsurpassed reliability with a unique trigger-release design
- Latex-free for safety.

**WELCH ALLYN
DURASHOCK MODEL DS66 ANEROID SPHYG
WITH MULTI-CUFF KIT**

DE-509830
\$225.00



**CRAZY
PRICE**

Features and Benefits

- Features an innovative gauge with a smooth trigger-style air release valve and ergonomic design with soft plastic inserts at key touch points for comfort and ease.
- Remains in calibration longer than traditional aneroids, providing more accurate readings over time and a lower lifetime cost, helping to improve practice efficiencies and your bottom line.
- Gear Free DuraShock™ technology.
- Shock resistant - withstands a 30m drop.
- Jewel movement for longer life.
- Laser engraved dial face for accuracy.
- Certified accuracy to +/- 3mmHg.
- 15 year calibration warranty; 10 years warranty.
- Soft comfort grip and trigger deflation valve for smooth, one finger operation.
- Unsurpassed reliability with a unique trigger-release design
- Latex-free for safety.

**WELCH ALLYN
767 SERIES ANEROID SPHYG
WITH ADULT CUFF - DESKTOP**

DE-767016
\$247.00



Features and Benefits

- An easy-to-use blood pressure aneroid sphygmomanometer.
- Improved ergonomics and a new modern design.
- Developed with staff and facility workflow efficiency in mind.
- Recessed, laser-engraved dial face with a high-contrast orange pointer provides high visibility, certified accuracy to reduce errors, and reduce parallax errors.
- New 5-leg stand provides improved stability and maneuverability.
- Certified accuracy to +/- 3mmHg.
- Latex and Mercury-free.
- Jewelled movement contributes to a longer life.
- The laser-engraved dial face provides unmatched accuracy.
- Desktop, wall mounted or mobile base mounts available.
- Comes included with reusable one-piece adult FlexiPort® BP cuff that is antimicrobial treated to help prevent mildew and bacteria growth.
- Lifetime calibration warranty reduces cost of ownership.

WELCH ALLYN
 GS300 GENERAL EXAMINATION LIGHT LED
 WITH TABLE/WALL MOUNT OR MOBILE STAND



DE-44416
\$570.00



DE-44456
\$696.00

Features and Benefits

- Available in a Table/Wall mount or a Mobile stand.
- Single white LED light.
- Provides a whiter, brighter light than halogen.
- LED life of 50,000 hours to maximize investment.
- Consumes less energy.
- It has perfect combination of intense light output and cool operation in a compact design.
- Help reduce risk of cross-contamination with touchless on/off.
- Multiple mounting options for floor space maximisation.
- Improve staff productivity and satisfaction with easy assembly and cleaning.

WELCH ALLYN
 GREEN SERIES EXAMINATION LIGHT IV
 WITH TABLE/WALL MOUNT OR MOBILE STAND



DE-48816
\$975.00



DE-48950
\$365.00
 MOBILE STAND ONLY.

Features and Benefits

- One LED - 3x the typical light output, pinpoint accuracy, true tissue colour rendition.
- Highly flexible pipe for easy manoeuvrability, helping to improve patient exams.
- Lightweight pipe is twice as long as conventional pipes, providing unobtrusive views.
- Pinpoint accuracy and true tissue colour with 3x the output of a halogen source.
- Help reduce risk of cross-contamination with touchless on/off.
- Multiple mounting options for floor space maximisation.
- Disposable sheath available for the reduction of risk associated with cross contamination.
- Lower cost of ownership due to elimination of bulb replacement and lower energy consumption.
- LED life of 50,000 hours to maximize investment
- Improve patient comfort - minimal heat from LED.
- Easy to assemble.

WELCH ALLYN
 GS600 MINOR PROCEDURE LIGHT LED
 WITH TABLE/WALL MOUNT OR MOBILE STAND



DE-44616
\$1050.00



DE-44606
\$1195.00

Features and Benefits

- Improve staff productivity and satisfaction with easy assembly and cleaning.
- Touchless intensity and power controls help reduce risk of cross-contamination.
- Standardize with rugged, ergonomic, long-lasting, and high-performance light.
- Disposable sheath available to help reduce the risk of cross-contamination.
- Maximize floor space with multiple mounting options.
- LED life of 50,000 hours to maximize investment.
- Three, white LEDs for greater, controlled intensity.

WELCH ALLYN
GS900 MINOR PROCEDURE LIGHT LED
 WITH CEILING MOUNT, WALL MOUNT, OR MOBILE STAND



DE-44900C
\$2655.00

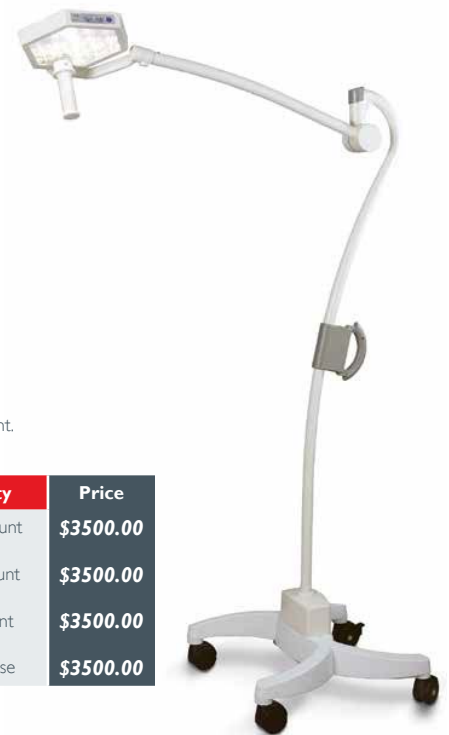
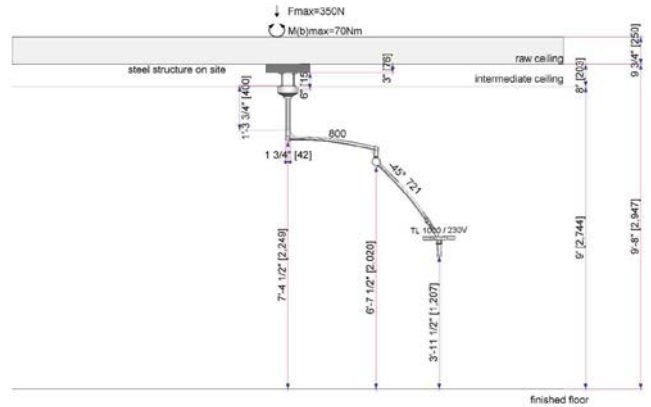
DE-44900W
\$2765.00

DE-44906
\$2825.00

Features and Benefits

- Size LEDs combining outstanding durability, extraordinary manoeuvrability, unparalleled spot quality and multiple mounting options.
- Minimal heat output and high colour temperature.
- Less energy consumption.
- No bulb replacement.
- 5 year limited warranty.
- 50,000 hours LED life.
- Touchless on/off control with dimming.

TRULIGHT 1000 EXAM LIGHT
 LED EXAMINATION LIGHT



Features and Benefits

- State OfThe Art Lighting.
- The LED technology offers higher light intensity and superior light quality compared to typical halogen lights.
- Light is optimally distributed by multi-lens matrix, which provides homogenous light quality in both area and depth, for the best possible visualization during examinations and minor procedures.
- Simple, flexible, and convenient handling. Balanced support arms are light weight and allows easy positioning.
- Power Energy Efficient Economy.
- Longer service life, less heat generation, greater reliability, and lower power consumption.
- High flexibility and space-saving compact design.
- Ideal for medical practices, outpatient clinics, hospital rooms, and preparation / recovery areas. Basically a 'One For All' light.
- Available in ceiling-mounted, wall-mounted, and mobile versions.

- Average LED Life: More than 50,000 hours.
- Number of LEDs: 18.
- Colour Temperature: 4500K.
- Lighthead Size: 12" (300mm).
- Soffit Cover: 7" Diameter By 5" Deep (178mm x 127mm).
- Down Tube: 7.8" - 39.4" (200mm - 1000mm) (in 20mm increments).
- Horizontal Arm: 800mm.
- Articulating Spring Arm Length: 28.3" (721 mm).
- Vertical Travel (Max): 35° up / 45° down; 44.75" (1136mm) Maximum.
- Light Rotation: 360° Continuous - main arm; spring arm; yoke; 210° at lighthead.

Code	Pack Quantity	Price
T1000	With Ceiling Mount	\$3500.00
T1000B	With Boom Mount	\$3500.00
T1000W	With Wall Mount	\$3500.00
T1000M	With Mobile Base	\$3500.00

SECA
803 ELECTRONIC SCALE



150 KG CAPACITY

DE-SE803B
\$129.00

762 MECHANICAL SCALE



150 KG CAPACITY

DE-SE762
\$255.00

813 ELECTRONIC SCALE



200 KG CAPACITY

DE-SE813
\$229.00



ADE
BABY MEASURE MAT

DE-MZI0027
\$81.50

MEASURES
100MM -
990MM



PROPERT
ELECTRONIC BABY SCALE

DE-I620
\$145.00



15 KG CAPACITY

HEALTHWEIGH
PHYSICIAN SCALE WITH HEIGHT MEASURE

DE-HI50005
\$579.00



250 KG CAPACITY

Features and Benefits

- Lightweight and slender.
- Large and stable scale base.
- Units of measure: lb only, kg only, lb/kg.
- Scale is multifunctional. Height / Weight indicated in single task for BMI calculation.
- Integrated rubber wheels for excellent portability and transport.
- Large easy to read display with built-in BMI functionality.
- Motiontrap™ movement compensation technology.
- EHR capable.
- Integrated height rod measures from 27.5 inches to 82 inches. Suitable for kids and adults.
- Designed and constructed in Israel to high quality standards.
- USB port to download or store your results.



WALMAY LIQUID NITROGEN CRYOSPRAY - COMPLETE KIT

Features and Benefits

- Strong flash collar made out of metal around probe.
- Stainless Steel extension nozzle for greater tensile strength and longevity.
- Fine metallic gauze strainer built into the siphon tube to reduce contamination when accessing the regulator.
- Base stand ring provides stability when not in use.
- Includes: 1 Liquid Nitrogen Dispenser with 0.3L flask.



TR-WM161

\$835.00

need a vaccine fridge?

chill out with these cool deals.



BROMIC MEDIFRIDGE

145 LITRES



SF-3736213

\$1465.00

220 LITRES



SF-3736217

\$2072.00

374 LITRES



SF-3736218

\$2695.00

Features and Benefits

- Audible Alarm sounds if the temperature of the unit falls or rises outside the set Min/Max recording.
- Integrated lock keeps medicines secure. Door open alarm.
- Fan and evaporator protection cover prevents product from being damaged.
- Fan forced to keep even temperature cooling throughout the unit.
- Internal LED Light.
- Double glazed safety glass increases energy efficiency.
- PVC coated elevated bottom shelf for consistent airflow.
- Rollers for easy placement. Adjustable legs for levelling.
- USB LogTag Data Logger included.
- 5 Year Warranty.



INCLUDES FREE LOGTAG DATA LOGGER VALUED AT \$140

IPAD SPI SEMI-AUTOMATED DEFIBRILLATOR



ER-CUSPI
\$1629.00

Features and Benefits

- Robust one-piece design.
- Simple switch from adult to child mode.
- Dual adult/child electrode pads.
- Ambient noise detector.
- CPR detection & metronome.
- Pad life indicator.
- Battery level indicator.
- Operational status indicator.
- Clear visual & verbal guidance.
- Large internal memory can store 5 events, up to 3 hours per event.
- Simple data access with SD card download.
- Free software.
- Remote data conversion service.

CONMED HYFREACATOR 2000

230 - 240V



TR-7900230
\$1695.00

POPULAR CHOICE

Features and Benefits

- Mono polar and bipolar modes.
- Self diagnostics.
- Recall of stored power settings.
- Histogram of memory data.
- High output terminal for fulguration and heavy desiccation procedures.
- Low output terminal for fulguration and light desiccation procedures.
- Superior outputs for better control and clinical outcomes.
- Dual processor, one controlling output and functionality the other monitors the system and activates if a hazard is detected.
- 12 Month Warranty.
- Includes: Electrolase Sharp Tip disposable electrodes (non-sterile), Electrolase Blunt Tip disposable electrodes (non-sterile), Hyfreacator 2000 Electrocautery handpiece, Hyfreacator Pencil Sheath (non-sterile), Handpiece sheath (sterile), training DVD, operation manual, power and cord.

HEARTSINE DEFIBRILLATOR PAD SAM350P

WITH AUTOMATED EXTERNAL DEFIBRILLATOR



ER-PAD350P
\$2095.00

Features and Benefits

- HeartSine Samaritan PAD350P with Automated External Defibrillator.
- IP56 water and dust rating. Highest rating on the market.
- Has all the features of the PAD500P Defibrillator except without CPR Advisor Technology.
- One of the smallest and lightest Defibrillators thanks to the PAD-PAK concept.
- After use the AED is refreshed with an inexpensive replacement PAD-PAK with upto 4 years shelf life.
- 8 Year Device Warranty.
- Comes with adult PAD-PAK.

HEARTSINE DEFIBRILLATOR PAD SAM500P

WITH CPR ADVISOR



ER-PAD500P
\$2599.00

Features and Benefits

- HeartSine Samaritan PAD500P Defibrillator with Advisor offers a technology breakthrough with its CPR Advisor that ensures blow flow to the brain during CPR.
- The only defibrillator on the market that ensures clinical effectiveness of chest compressions.
- Remarkable life-saving feature of real-time feedback on the quality of compressions.
- Contains technology that determines electrically through the defibrillation pads whether your compressions are effective.
- Voice prompts guide you through the process of defibrillation as advising whether you need to 'Push Harder' or whether you are doing 'Good Compressions' - all based on real cardiac output (real blood flow).
- IP 56 dust and water ratings - the highest rating on the market.
- One of the smallest and lightest defibrillators thanks to the PAD-PAK concept.
- After use, the device can be refreshed with an inexpensive replacement PAD-PAK with upto 4 years shelf life.
- 8 Year Device Warranty.
- Comes with adult PAD-PAK.

SARA WAITING ROOM CHAIR
POWDERCOATED FRAME WITH VINYL UPHOLSTERY

SF-SARA
\$395.00



- Measurements**
- Seat Width (Back): 470mm.
 - Seat Width (Front): 600mm.
 - Seat Depth: 540mm.
 - Height: 800mm.

Choose from vinyl options above.



Features and Benefits

- Steel constructed frame.
- Easily stackable. Stack 5 high for easy storage.
- Powder coated frame.
- High quality fire retardant premium grade foam for comfort and safety.
- Available in a range of upholsterys.
- 250kg load rating.

WAITING ROOM CHAIR
WITH FABRIC UPHOLSTERY

SF-JOS601F
\$195.00



- Measurements**
- Height: 780mm.
 - Width: 560mm.
 - Diameter: 580mm.



Features and Benefits

- Premium upholstered waiting room chair.
- 4 leg fully welded steel frame, upholstered seat and back.
- Optional armrests for added comfort.
- Ideal for surgery seating.
- 110kg weight capacity.
- 3 Year Warranty.

Available in Red, Charcoal or Black.
Also available in Vinyl.
Upholstery at an additional \$20.

SETTING UP A NEW SURGERY OR RENOVATING?

LET US KNOW AND WE'LL RUN YOU THROUGH OUR 6-STEP FITOUT PROCESS:

1 CONSULT

Full consultation to ascertain your surgery's needs within your allocated budget.

2 ANALYSE & QUOTING

We'll analyse your space and recommend suitable fit-out equipment for your needs.

3 LIAISE

We'll liaise with builders, architects & interior designers to ensure a hassle free process.

4 DELIVER

We'll ensure on time no-fuss delivery. In some cases, when requested, we can take the relevant rubbish away.

5 SET UP

We can install your new equipment, ensuring it is laid out correctly.

6 SUPPORT & TRAINING

Our customer care team will support you throughout the fit-out process. Our well-trained sales team can train your staff on-site.

SARA WAITING ROOM CHAIR
POWDERCOATED FRAME WITH VINYL UPHOLSTERY



SF-SARANEPTUNE

\$329.00



OVER-STOCKED CLEARANCE SALE



FREE STANDING TABLE
WITH ELEVATING BACKREST,



280 KG CAPACITY

2 YEAR WARRANTY

SF-FSBL

\$375.00

Features and Benefits

- Fixed height heavy duty frame.
- Grey frame with black medical vinyl.
- Measurements: 195cm Length x 70cm Width x 80cm Height.

MEDILOGIC DELUXE 3 SECTION COUCH
ELECTRIC HI LO TREATMENT

SF-100035NB

\$1195.00



Features and Benefits

- Comes in Navy Blue or Black Medical Vinyl Upholstery.
- Treatment table supplied in 3 Section (equal) Style.
- Double Gas Strut Backrest and Legrest adjustment to ensure maximum longevity and smooth operation.
- Backrest movement handle on back of backrest, and the legrest handles are on both sides of Leg rest.
- Designed to meet the strict RACGP Accreditation Guidelines.
- Huge 250kg maximum user weight.
- High performance T-Motion Actuator with foot operating pedal.
- 5 Year Structural Frame Warranty with a 3 Year Actuator and Moving Parts Warranty.
- TGA Approved.
- Measurements: 2000mm Length x 700mm Width.
- Hi-Low Movement Range: 470mm to 900mm.

QUBE STAINLESS STEEL INSTRUMENT TROLLEY

1 DRAWER



SF-229751

\$425.00

2 DRAWER



SF-229851

\$575.00

3 DRAWERS



SF-229951

\$695.00

SUPERIOR CASTOR WHEELS

PREMIUM HOSPITAL QUALITY

