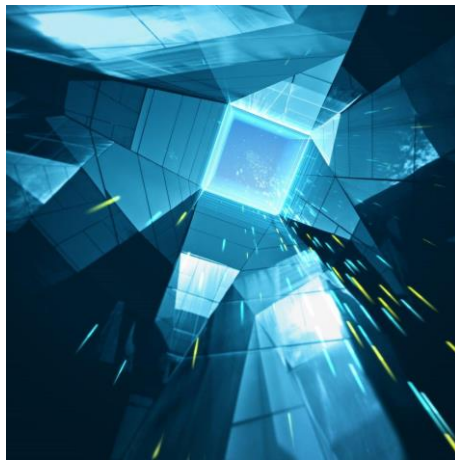


Desigo CC™

Desigo CC™ Connect

P55802-Y112-A100



The Desigo CC™ Connect is one of the variants of the Desigo CC™ product family, specifically developed to integrate a variety of devices and protocols into a common software layer. It is designed among others to:

- Act as a software gateway between systems with different protocols
- Decentralize the computational power on the node level and inject additional intelligence
- Participate in the Internet of Things through open APIs and custom adapters

General Description

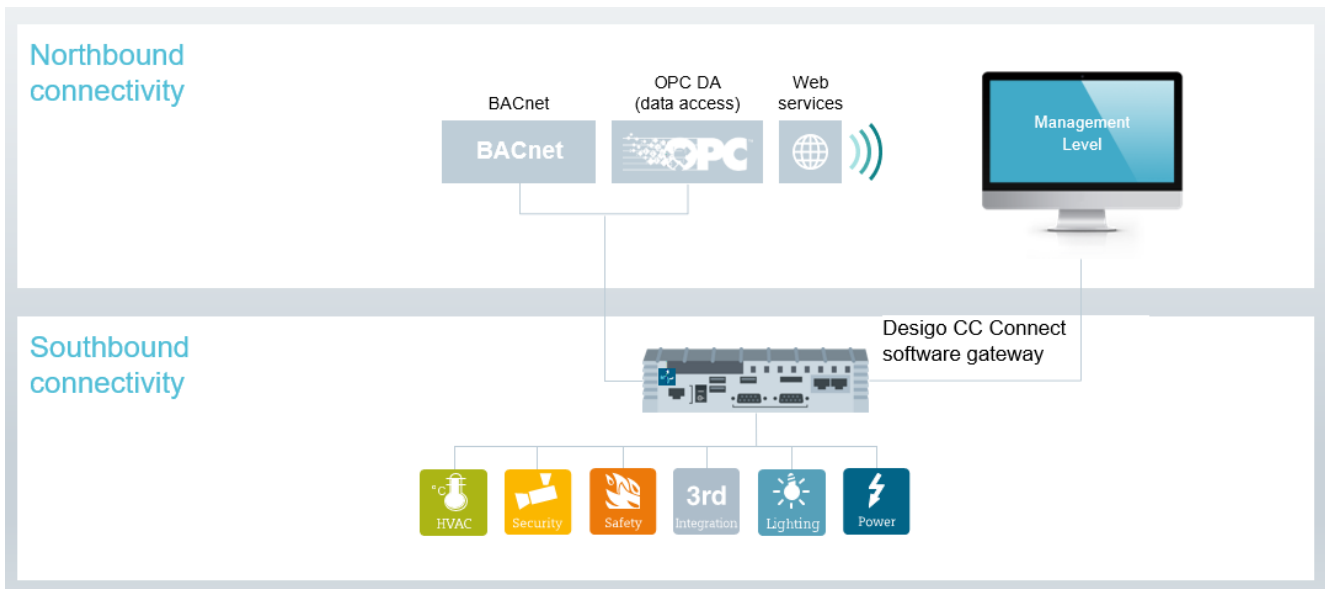
Desigo CC™ Connect is a gateway between systems with different protocols. Desigo CC™ Connect as a software platform, incorporates the industry's latest software technology to integrate BACnet, Modbus, KNX, M-bus, SNMP, S7 and various disciplines (for example, Danger Management), into a common object model and is supported by a powerful computational engine.

The Desigo CC™ Connect with its own intelligence, has less need to send information back to a central server because of the embedded interpretation capability. By moving more intelligence to the Desigo CC™ Connect node, the software can decentralize functionalities such as: data collection, event collection, calendar functions, time scheduling, time-based functions, mathematical/logic calculations, reactions, logics and data interactions.

Desigo CC™ Connect software gateway is flexible and able to manage complex requirements in small or large scaled projects, where distribution of computational effort is required. The software is enabling seamless integration at the IP level and provides a full engineering environment. In addition Desigo CC™ Connect is able to expose information to a higher level via the Restful API, the BACnet or via the OPC Northbound Interface.

System Architecture

Desigo CC™ Connect is a gateway server designed to augment existing building infrastructure and integrate with standard IT hardware, software, and networks. The open, adaptable architecture can support virtual IT environments and advanced networks.



System Capabilities

- Support for BACnet, OPC, Modbus, HTTP(S), SNMP, M-bus, KNX, IEC61850, HTML5, Haystack, Power, Power Quality, S7 and S7 Plus standards
- Open-data libraries designed for extensions and integrations
- Support for Siemens and third-party building automation, danger management, power management units and a variety of other systems
- Northbound connectivity via:
 - BACnet IP server
 - OPC DA server and REST Web Services interfaces
 - Web Service Interface (WSI)
- Southbound open interfaces and SDK to develop subsystem extensions
- Consolidated Ecosystem program and network to share and expand subsystem extensions, applications, utilities, and tools

Certifications and Approvals

Desigo CC™ Connect has been tested against a wide range of domain- and country-specific norms and standards, including:

- BACnet Revision 1.15, certified by BACnet Testing Laboratory as BACnet Advanced Workstation Software (BTL B-AWS)
- AMEV recommendation BACnet 2017 compliant with Management Operation Unit (MOU-B) profile
- IT security compliant with the ISA-99/IEC 62443 Security Level: SL2
- OPC DA V2.05a and V3.0 Server, certified by the OPC Foundation certification program

Technical Data

All systems should be dimensioned according to project size, and you should maintain OS compatibility until Microsoft retires the product.

Operating System Compatibility

The Server and Installed Clients run on the following Microsoft operating systems and editions:

- Microsoft® Windows 10 64-bit (Professional and Enterprise)
- Microsoft® Windows 10 IoT Enterprise 2016 LTSC
- Microsoft® Windows Server 2012 R2 64-bit
- Microsoft® Windows Server 2016 64-bit
- Microsoft® Windows Server 2019 64-bit

Hardware Requirements (minimum recommendation)

Physical Machine

- Hard disk: 64GB SSD
- RAM: 8GB
- Processor: Core i7 or equivalent ≥ 3.2 GHz, 4 cores per running system

Embedded Hardware

- Hard disk: 64GB SSD
- RAM: 8GB
- Processor: Intel Atom E3827

Microsoft SQL Server Compatibility

Microsoft SQL Server 2019 Express is free and included with the installation media. Additional supported SQL version and editions are:

- Microsoft® SQL Server 2016 (Express, Standard and Enterprise)
- Microsoft® SQL Server 2017 (Express, Standard and Enterprise)
- Microsoft® SQL Server 2019 (Express, Standard and Enterprise)

Ordering Information

For ordering information related to Desigo CC™ Connect, please visit our online tool [HIT](#).

Resources

For the latest information about Building Products and Siemens Smart Infrastructure, visit our [Building Products](#) site.

For other datasheets, see the following:

- Desigo CC™
- Cerberus® DMS
- Desigo CC™ Compact BA
- Desigo CC™ Compact DMS
- Desigo CC™ Compact Validated Monitoring
- Desigo CC™ Compact for Electrical applications
- Desigo CC™ Connect

For more information, refer to your local sales organization.

Cybersecurity Disclaimer

Siemens' portfolio undergoes continuous development to make it more secure. Siemens strongly recommends that updates are applied as soon as they are available and that the latest versions are used. Use of versions that are no longer supported, and failure to apply the latest updates may increase your exposure to cyber threats. Siemens strongly recommends compliance with security advisories on the latest security threats, patches, and other related measures—published, among others, under <https://www.siemens.com/cert/en/cert-security-advisories.htm>.