

# First Direct Dynamical Detection of a Dual Super-Massive Black Hole System at sub-kpc Separation

Karina. T. Voggel<sup>1</sup>, Anil C. Seth<sup>2</sup>, Holger Baumgardt<sup>3</sup>, Bernd Husemann<sup>4</sup>, Nadine Neumayer<sup>4</sup>, Michael Hilker<sup>5</sup>, Renuka Pechetti<sup>6</sup>, Steffen Mieske<sup>7</sup>, Antoine Dumont<sup>2</sup>, and Iskren Georgiev<sup>4</sup>

<sup>1</sup> Universite de Strasbourg, CNRS, Observatoire astronomique de Strasbourg, UMR 7550, 67000 Strasbourg, France, e-mail: karina.voggel@astro.unistra.fr

<sup>2</sup> University of Utah, James Fletcher Building, 115 1400 E, Salt Lake City, UT 84112, USA

<sup>3</sup> School of Mathematics and Physics, University of Queensland, St. Lucia, QLD 4068, Australia

<sup>4</sup> Max-Planck-Institut für Astronomie, Königstuhl 17, 69117, Heidelberg, Germany

<sup>5</sup> ESO Headquarters, Karl-Schwarzschild-Str. 2, 85748 Garching bei München Germany

<sup>6</sup> Astrophysics Research Institute, Liverpool John Moores University, 146 Brownlow Hill, Liverpool L3 5RF, UK

<sup>7</sup> ESO Vitacura, Alonso de Córdova 3107, Vitacura, Casilla 19001, Santiago de Chile, Chile

Received 18. March 2021 / Accepted XXX

## ABSTRACT

We investigate whether the recently discovered two nuclei in NGC 7727 both host a super-massive black hole (SMBH). We use the high spatial resolution mode of the integral-field spectrograph MUSE on the VLT in adaptive optics mode to resolve the stellar kinematics within the sphere-of-influence of both putative black holes. We combine the kinematic data with an HST-based mass model and use Jeans models to measure their SMBH mass. We report the discovery of a dual SMBH system in NGC 7727. We detect a SMBH in the photometric center of the galaxy in Nucleus 1, with a mass of  $M_{\text{SMBH}} = 1.54^{+0.18}_{-0.15} \times 10^8 M_{\odot}$ . In the second nucleus, which is 500 pc offset from the main nucleus, we also find a clear signal for a SMBH with a mass of  $M_{\text{BH}} = 6.33^{+3.32}_{-1.40} \times 10^6 M_{\odot}$ . Both SMBHs are detected at high significance. The off-axis nature of Nucleus 2 makes modelling the system challenging, however, a number of robustness tests suggest that a BH is required to explain the observed kinematics. The SMBH in the offset Nucleus 2 makes up 3.0% of its total mass, which means its SMBH is over-massive compared to the  $M_{\text{BH}} - M_{\text{Bulge}}$  scaling relation. This confirms it as the surviving nuclear star cluster of a galaxy that has merged with NGC 7727. This discovery is the first dynamically confirmed dual SMBH system with a projected separation of less than a kpc and the nearest dynamically confirmed dual SMBH at a distance of 27.4 Mpc. The second Nucleus is in an advanced state of inspiral and it will eventually result in a 1:24 mass ratio SMBH merger. Optical emission lines suggest Nucleus 2 is a Seyfert galaxy, making it a low-luminosity AGN. There are likely many more quiescent SMBHs as well as dual SMBH pairs in the local Universe that have been missed by surveys that focus on bright accretion signatures.

**Key words.** galaxies: nuclei, galaxies: kinematics and dynamics, galaxies: Seyfert, galaxies: Black Holes

## 1. Introduction

When two galaxies with SMBHs in their centers merge, they are expected to form a dual SMBH with a separation of 1 – 100 kpc (e.g. De Rosa et al. 2019 for a review). Dynamical friction and the ejection of stars hardens the SMBH system until it reaches pc scale separation and eventually merges via the emission of gravitational waves (Enoki et al. 2004; Makino & Funato 2004; O’Leary et al. 2009). The low-frequency gravitational waves of such merging SMBH binaries will be the prime targets for upcoming space-based gravitational wave detectors such as LISA (Moore et al. 2015). The growth of SMBHs via galaxy mergers is a crucial ingredient in the assembly of BH masses in hierarchical galaxy evolution models (Volonteri et al. 2003; Volonteri 2010; Greene 2012).

AGN signatures have been used to identify a handful of dual SMBH candidates, with an even smaller number being confirmed (Komossa et al. 2003; Comerford et al. 2013, 2015; Rubinur et al. 2017). These candidates are typically at large distances ( $z > 0.2$ ) that make spatially separating their emissions challenging. Recently, large catalogues of candidate dual AGN have been published (Stemo et al. 2020, e.g.), but all of these

dual AGN have separations of 2–20 kpc and are very distant. To confirm dual AGN, several studies have used IFU spectroscopy to spatially resolve the emission line regions of each AGN (e.g. Fu et al. 2012; McGurk et al. 2015; Kosec et al. 2017; Husemann et al. 2018). However, at these distances, the most advanced integral-field-unit (IFU) instruments can identify the presence of two independent AGN components but not the stellar component surrounding the SMBHs in the sphere-of-influence.

There is only one candidate for a dual AGN at sub-kpc separation with a dual Quasar pair with a projected separation of only 800 pc (Woo et al. 2014). The identification of sub-kpc SMBH pairs is especially important as it is the phase just before the formation of a gravitationally bound SMBH binary and its subsequent coalescence into a SMBH merger.

The closest known dual SMBH is NGC6240 (Komossa et al. 2003; Kollatschny et al. 2020), which is located at 144 Mpc. In the study of Kollatschny et al. (2020) of NGC 6240, based on MUSE observations, they have reached a spatial resolution that is good enough to show that the emission lines come from two separate stellar components and are thus a true dual SMBH. They discovered that it might be a triple AGN system with three accreting black holes within a separation of  $\sim 1$  kpc. This galaxy

is too distant for a dynamical BH mass measurement and they can only infer the SMBH masses from the  $M - \sigma$  relation, which are particularly uncertain given the dynamical state of the system.

In this paper we present a study of NGC 7727 a candidate for a dual SMBH system. It lies at distance of 27 Mpc and its disturbed post-merger morphology indicates it experienced a recent merger. The galaxy has a second nucleus with a candidate SMBH that was discovered by Schweizer et al. (2018). It lies at a projected distance of just 500 pc ( $3.8''$ ) from the main nucleus and has the same radial velocity as the main galaxy and is thus not a foreground or background object. Their integrated velocity dispersion measurement was higher than expected from a typical stellar population alone, indicating that there might be a SMBH in the second offset nucleus, which would make this a stripped nucleus in formation.

The mass ratio of dual SMBHs is a key parameter for understanding GW signatures. Thus far BH masses in dual SMBHs have been estimated using AGN indicators (Greene & Ho 2007b; Schulze et al. 2015), or using the  $M - \sigma$  relation (Greene & Ho 2007a; Xiao et al. 2011). These estimates are uncertain, particularly due to the non-equilibrium conditions stripped galaxies show during merging (e.g. Forbes et al. 2014). Unfortunately, the large distances of most dual SMBH make direct dynamical measurements of the SMBH masses impossible. Thus NGC7727, as the nearest dual SMBH, represents a unique opportunity to make dynamical mass measurements and directly constrain the mass ratio of a dual SMBH system for the first time.

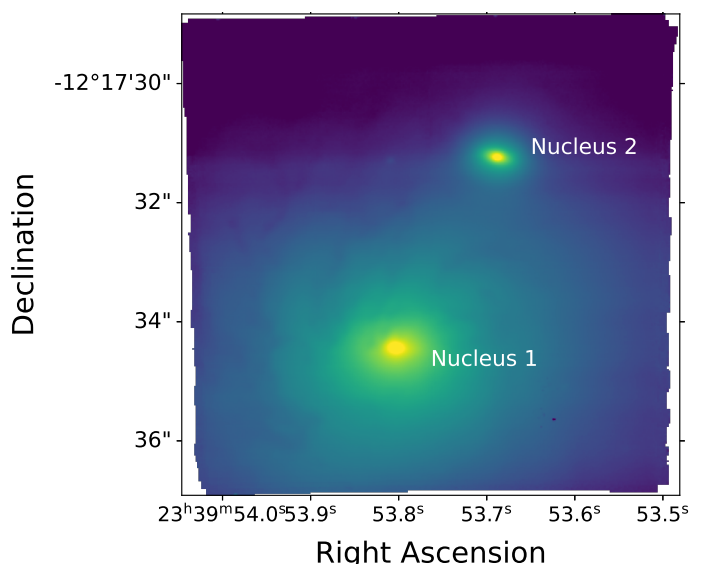
The AGN signatures detected by Schweizer et al. (2018) suggest Nucleus 2 may be a stripped nuclei. Dynamical detection would confirm this. Recently, stripped nuclei with SMBHs in their centers have been confirmed multiple times in recent years in massive star clusters in the halo of larger galaxies (Seth et al. 2014; Ahn et al. 2017, 2018; Afanasiev et al. 2018). Their SMBHs were all confirmed through direct stellar dynamical measurements that resolved the sphere-of-influence (SOI) of the SMBHs. These over-massive SMBHs make up between 3-15% of the total mass, much more than what is found with the  $M_{\text{BH}} - M_{\text{Bulge}}$  relation (e.g. Kormendy & Ho 2013). However, all these stripped nuclear star clusters are far out in the halo of their parent galaxies and their former host galaxies were dissolved a few Gyr ago. In contrast, NGC 7727 still shows active post-merger signatures and has been caught in the process of merging, making it an important test bed for SMBH formation as well as stripped nuclei formation.

Simulations have predicted that merging of galaxies produces stripped galaxies whose SMBHs are over-massive for the Bulge mass of their host galaxy (Volonteri et al. 2008, 2016; Barber et al. 2016; Tremmel et al. 2018). The observed over-massive SMBHs in stripped nuclei are a confirmation of this theoretical expectation.

This paper is organized as follows: In Section 2 we present the MUSE data and the analysis of the kinematics. In Section 3 we present the photometric data and the mass modelling. In Section 4 we present the results from the dynamical Jeans models that we used to measure the BH masses. In Section 5 we discuss the findings concerning the emission lines in the galaxy. Finally, Section 6 and 7 contain the discussion and conclusion.

## 2. MUSE Data and kinematic measurements

The center of NGC 7727 was observed with the integral-field spectrograph MUSE (Bacon et al. 2010) on the nights of the 8th and 29th of July 2019 (Program ID: 0103.B-0526(A), PI:

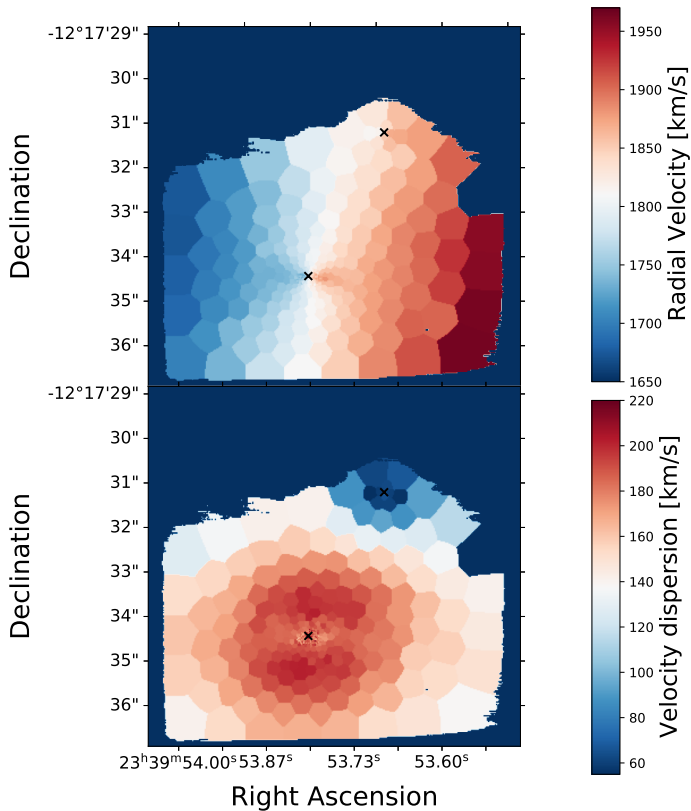


**Fig. 1.** The white-light image of the collapsed MUSE data cube. Nucleus 1 is the photometric center of the main galaxy NGC 7727 and Nucleus 2 is offset to the north-west, which is 500 pc in projected separation.

Vogel). For this we used the  $7.5'' \times 7.5''$  narrow-field-mode of the instrument that provides full adaptive optics and a pixel size of  $0.025''/\text{pixel}$ . The adaptive optics provides a  $< 0.1''$  point-spread function (PSF, 13 pc at this distance), which is necessary to resolve the stellar velocities inside the  $0.8 - 0.15''$  sphere-of-influence of the two putative black holes.

We observed two OBs with  $4 \times 600$  s observing time each, for a total time on target of 80 minutes. The individual cubes were fully reduced and then combined with the MUSE pipeline version 2.8.1 (Weilbacher et al. 2020). The image of the collapsed white-light cube is shown in Figure 1 with the two nuclei labelled. Nucleus 1 is at the photometric center of NGC 7727, whereas Nucleus 2 is offset by  $3.8''$  to the top right. We did not use the provided sky subtraction of the pipeline due to the galaxy covering most of the field-of-view, which generally results in poor subtraction. We chose the Zurich Atmosphere Purge (ZAP, Soto et al. 2016) package instead, which is a sky subtraction tool for MUSE that is based on principal component analysis. This package has shown to preserve the line shape and flux of the lines while removing the sky efficiently, especially in cases where the objects fills the field-of-view of a cube.

Due to MUSE's small NFM pixels ( $0.025'' \times 0.025''$ ) we need to spatially bin the spectra in areas where the signal-to-noise is too low. We do this using the Voronoi binning Code (Cappellari & Copin 2003) that creates bins with a similar minimum S/N. We bin to a S/N ratio of 20 for the region around Nucleus 2 to retain individual pixel resolution close to its center. For describing the kinematics in the center of Nucleus 1, a binning with a target S/N of 25 is sufficient for retaining the spatial resolution needed for dynamical modelling. For each of the Voronoi bins (see Fig. 2), we then combine the spectra within each bin into a single one dimensional spectrum that then can be further analyzed. We fit the binned 1-d spectra using the penalised pixel fitting code (pPXF) (Cappellari & Emsellem 2004; Cappellari 2017). We use the MUSE spectral library as stellar templates (Ivanov et al. 2019). The set contains 35 standard stars observed with MUSE cover stellar temperatures from 2600 and 33000 K,  $\log(g) = 0.6 - 4.5$  and  $[\text{Fe}/\text{H}]$  from  $-1.22$  to  $0.55$ . Choosing a MUSE template library minimizes the template mismatch that



**Fig. 2.** Top Panel: The stellar velocities are shown across the binned MUSE cube. Regions without sufficient S/N were excluded from the fits. Bottom Panel: Shows the stellar dispersion. Both panels have the data in spatial bins of at least  $S/N = 25$ , and the two Nuclei are marked with a black x.

can occur when using theoretical libraries that need to be convolved with the line-spread-functions.

In addition to these stellar templates we also allow for a gas emission component in the fits as the two galaxy nuclei show emission lines in the Schweizer et al. (2018) work. The gas emission lines that are included in the fits are  $H_\beta$ ,  $H_\alpha$ ,  $[\text{SII}]\lambda 6716$ ,  $[\text{SII}]\lambda 6731$ ,  $[\text{OIII}]\lambda 5007$ ,  $[\text{OI}]\lambda 6300$  and  $[\text{NII}]\lambda 6583$ . We derive a flux for each emission line, and a single common gas velocity and dispersion that is independent of the stellar component.

For the kinematic measurements we restrict the MUSE wavelength range from 6500-9000Å in order to closely match the wavelength of our mass model that is in the same wavelength range. We derive the uncertainty of the pPXF kinematic measurements by doing 50 Monte Carlo resamplings of each spectrum adding a Gaussian error and then refitting the kinematics. The standard deviation of the 50 fit results is used as  $1-\sigma$  error for the kinematics. The dispersion and velocity map of the entire field-of-view at the  $S/N = 25$  binning are shown in Fig. 2. The large scale kinematic signatures of the galaxy are easily visible with strong rotation along the axis aligned closely north to south. While at this level of binning the details of Nucleus 2 are not resolved, it is clearly visible that the nucleus is at the same radial velocity than the surrounding stellar velocities of the main galaxy and thus definitely part of NGC 7727.

### 3. Photometric Data and Mass Modelling

#### 3.1. HST imaging and Light Profile

We use the F814W and F555W band observations of NGC 7727 from the HST archive. We run the light profile fitting code GALFIT (Peng et al. 2004) on the F814W image, in order to measure the light profiles and their structural parameters. GALFIT also requires a point-spread-function (PSF) of the observations, which we derive using the Tiny Tim Software (Krist et al. 2011).

We fit the light profiles using GALFIT. The main galaxy is fit with three Sérsic profiles, the bulge, Nucleus 1, and in addition a Sérsic component at the position of Nucleus 2. We exclude all regions with significant contribution of dust from the fit. The results of the GALFIT run are listed in Table 1. All magnitudes are expressed in the AB magnitude system with a zero point of  $ZP_{F814W} = 24.21$ .

These light profiles are then de-projected into Gaussians with a Multi-Gaussian Expansion (MGE) (Cappellari 2002). The MGE for Nucleus 1 de-projects the bulge component of NGC 7727 as well as the Nucleus 1 profile itself. The de-projection of Nucleus 2 contains only the MGE of that component. The tables listing the MGEs are listed in the appendix. The standard de-projection of the MGE method only allows for components with the same center, and thus we do not include a component for the light of the main galaxy. We chose to directly use the light-profiles for the Gaussian decomposition instead of the HST image itself because it provides us with the properties of the individual physical components of the galaxy. It also enables us to fit for the main galaxy and Nucleus 2 at the same time which is not possible with the MGE code. The typical relative residuals between HST image and the light profile are within 5%. The MGE decomposition of this light profile has maximum relative errors of 9% when decomposing the profile into individual Gaussian components.

#### 3.2. Determining the Adaptive Optics PSF

The point-spread-function (PSF) of the MUSE adaptive optics (AO) correction needs to be measured precisely in order for us to model the kinematic signature of the potential black holes. In previous work (e.g. Ahn et al. 2017, 2018; Voggel et al. 2018) we used HST imaging that has a higher spatial sampling than typical IFU instruments and convolve the HST images with a PSF model, until the convolved light profile matches the one from the adaptive optics data. However, the MUSE narrow-field mode has a  $0.025''$  pixel scale that is twice the resolution compared to the  $0.05''$  pixel scale of the available NGC 7727 HST observations. Thus we need an alternative route to determine the adaptive optics PSF.

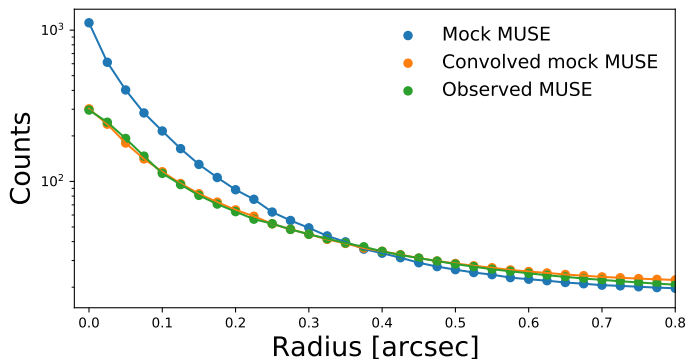
The light profile fit described in the previous section provide an analytic light profile for the Nuclei and the main galaxy, and thus we can use these light profiles to provide information on the shape beyond the resolution limit of the underlying HST data. We use the derived light profile parameters and create an un-convolved mock observation of NGC 7727. We do this by combining a two dimensional Sérsic profile for each light profile component into a mock cube that has the MUSE spatial resolution.

We then convolve these mock cube with a wide grid of MUSE PSFs derived from the Maoppy code of Fétick et al. (2019). In their model they create a parametrisation of the adaptive optics PSFs for MUSE using a Moffat core and Kolmogorov halo for the outskirts. The best fit PSF minimises the  $\chi^2$  between



**Table 1.** GALFIT Best-Fit Parameters

Component	Mag <sub>814</sub>	$r_{\text{eff}} ["]$	Sérsic Ind.	Axis Ratio	P. A.
Bulge	11.28	6.2	2.28	0.74	-73.03
Nucleus 1	15.39	0.36	1.51	0.60	82.57
Nucleus 2	16.08	0.23	1.79	0.62	70.51

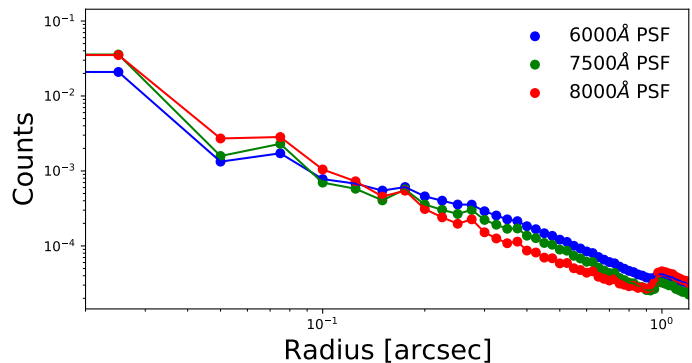

**Fig. 3.** The radial brightness profile of Nucleus 2 is shown for the unconvolved mock cube in blue, the mock cube convolved with the best-fit AO PSF at 7500Å is shown in orange and the actual observed luminosity profile with MUSE is shown in green.

**Table 2.** Gaussian Parameters for the kinematic PSFs. The first 4 components are for the best-fit PSF at 6000 Å, the second set is for the default 7500 Å PSF and the last set for the 8000 Å

Number	$\sigma ["]$	Fraction of the light [%]
1	0.020	18.90
2	0.099	4.83
3	0.275	27.06
4	1.03	48.65
<hr/>		
1	0.020	25.30
2	0.137	2.78
3	0.212	20.93
4	0.891	40.78
<hr/>		
1	0.022	37.10
2	0.098	15.23
3	0.198	6.89
4	0.758	40.07

the convolved mock image and the real MUSE observation light profile as shown in Fig. 3.

We derive our default AO PSF at 7500Å which is the mean wavelength of the MUSE spectra from which we derive the kinematics. We chose the best-fit PSF by minimizing the difference between the convolved mock cube and the MUSE data. This best-fit PSF has a Fried Parameter of  $r_0 = 0.2$ , and  $\alpha = 0.9$ ,  $\beta = 1.9$  which parametrise the Moffat core. The JAM models require a Gaussian parametrisation of the input adaptive optics PSF, as the code cannot use the actual PSF. Thus we expand the parametrised PSF into 4 Gaussian components that represent the light profile of the PSF as close as possible. Four Gaussian components were necessary to provide a good fit to the model PSF. The sigma and relative light contributions of each Gaussian component are given in the first section of Table 2. The default 7500Å PSF has two core components with a combined FWHM of 0.07" that contain  $\sim 28\%$  of the light, the medium sized component 3 contains about 21% of the light and the large 1" FWHM component contains  $\sim 41\%$  of the light. This very concentrated


**Fig. 4.** Comparison of the three MUSE AO PSFs we derived using the maoppy code. This is a radial profile taken from the full 2D PSF that the maoppy code provides on the same 0.025" pixel size than the MUSE data. The variation of the datapoints are due to the MUSE pixel size in which the PSF was generated.

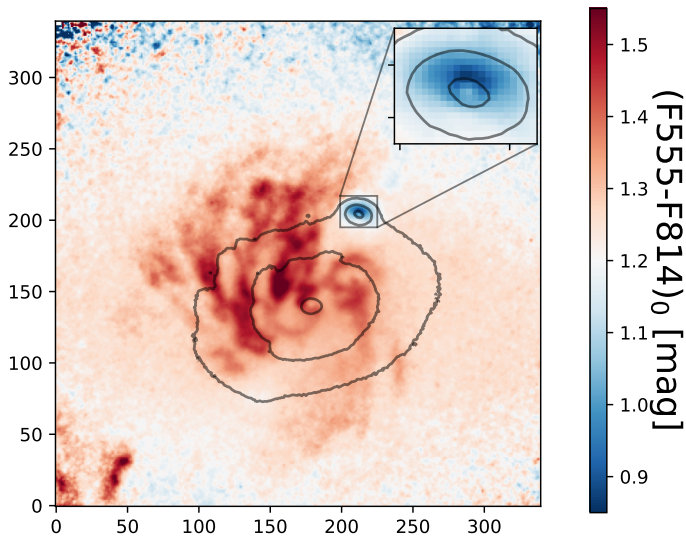
core, with a wide halo is typical for MUSE NFM PSFs for which core FWHMs of 0.07 – 0.1" are common.

The quality of the AO correction is wavelength dependent, with the best correction attained at red wavelengths. For the default PSF we assumed that the PSF follows the mean wavelength of the spectra at 7500Å. However, to test for the systematic effects this assumption has on the SMBH masses, we also derive the AO PSF at 6000Å and 8000Å. In Section 4.3 we test our models with those two PSFs and in Table 2 their Gaussian expansion values are listed. A radial profile comparison of those two PSFs to the default 7500Å PSF is shown in Fig. 4. From the plot it is visible how the fraction of light in the red PSF at 8000Å is more centrally concentrated and for the blue PSFs their wings become much more extended.

### 3.3. Stellar Population Model

In Schweizer et al. (2018) it was found that Nucleus 2 is a mix of an intermediate stellar population with an age of 1.4 Gyr and an older population of 11.3 Gyr. We use the HST imaging to investigate whether these intermediate populations cause an age and color-gradient that needs to be taken into account when modelling its stellar population. We use the archival HST imaging in the F555W and F814W bands to create a color map. For this color map we cross-convolve each image with the PSF of the opposite band to avoid any color effects due to PSF differences. We then correct for foreground extinction. The resulting color map is shown in Fig. 5 with overlaid intensity contours of the F814W HST image. It is easily visible that Nucleus 2 is much bluer than the entire surrounding galaxy and Nucleus 1. The prominent dust lanes also point to some significant amount of dust and thus internal extinction in the galaxy.

The center of Nucleus 2 has a color of F555W-F814W=1.0 mag and then rises outwards. This indicates a strong central concentration of a different population than the main galaxy. From the zoomed inset in Fig. 5 it is also visible that



**Fig. 5.** Map of the F555W-F814W color derived from the HST images that are cross convolved with the PSF of the opposite band. The color is corrected for foreground extinction. Inset is focussed on Nucleus 2. The overlaid contours are from the F814 image.

the color north of the center of Nucleus 2 is much bluer than south of it. This asymmetric color is likely caused by dust. Interestingly in the very central two pixels of Nucleus 2 the color becomes redder again, indicating there is some dust contribution in the very center.

To take this color gradient into account for our mass models that are required as input for the Jeans Models, we use single stellar population (SSP) fits to determine whether there is also a mass-to-light ratio ( $M/L_s$ ) gradient. For the stellar population fits we use the MILES stellar population library (Vazdekis et al. 2010; Falc3n-Barroso et al. 2011) with Basti Isochrones and a Chabrier IMF. We only use non alpha-enhanced models in our fits, for which in the MILES models,  $[Fe/H]=[M/H]$ . The fits are performed on radially integrated spectra of the MUSE data with a step width of  $0.05''$  that corresponds to two MUSE pixels. This allows us to have better S/N for the population fits. To minimize the impact of the wavelength varying PSF, we restrict the population fits to include only the blue wavelength range of  $4800 - 5770 \text{ \AA}$ , where there are several age sensitive lines.

Other than restricting the wavelength range and using a theoretical library of stellar templates, the set-up of the rest of the fitting routine is the same as in the section of the dynamical measurements. The spectral variation in the PSF prevents the derivation of extinction from the spectroscopic data. We use the weights that the pPXF code provides for each stellar template to calculate the weighted average of the radial  $M/L_s$  and the predicted  $F555W - F814W$  color without accounting for internal extinction.

The observed foreground extinction corrected radial HST color profile of Nucleus 1 and 2 are compared to the predicted color from our SSP fits (diamond symbols) in the top and middle panel of Fig. 6 respectively. For Nucleus 2 the HST color profile is derived from the upper-half of the Nucleus, to get a better estimate of the intrinsic profile that is less affected by the dust in the southern region.

### 3.4. Internal Extinction Correction

In both cases the observed HST colors are significantly redder by  $0.1 - 0.2$  mag compared to the predicted colors. This reddening is likely caused by internal dust and thus extinction in NGC 7727, which has to be taken into account for our mass modelling. We can use the difference between the observed HST color to estimate the internal extinction in both nuclei and how it varies with radii. For Nucleus 1 the color difference does not significantly depend on radius, suggesting a roughly constant internal extinction. However, in Nucleus 2 the observed color is significantly reddened in the center then drops around its half-light radius and then rises again. We calculate the internal extinction by first transforming the F555W-F814W color excess into  $E(B-V)$ , and then using the Calzetti et al. (2000) extinction law with a  $R_V = 3.1$  to calculate the internal extinction. We transfer to the HST bands using the relation  $A_{F814W}/A_V = 0.605$ .

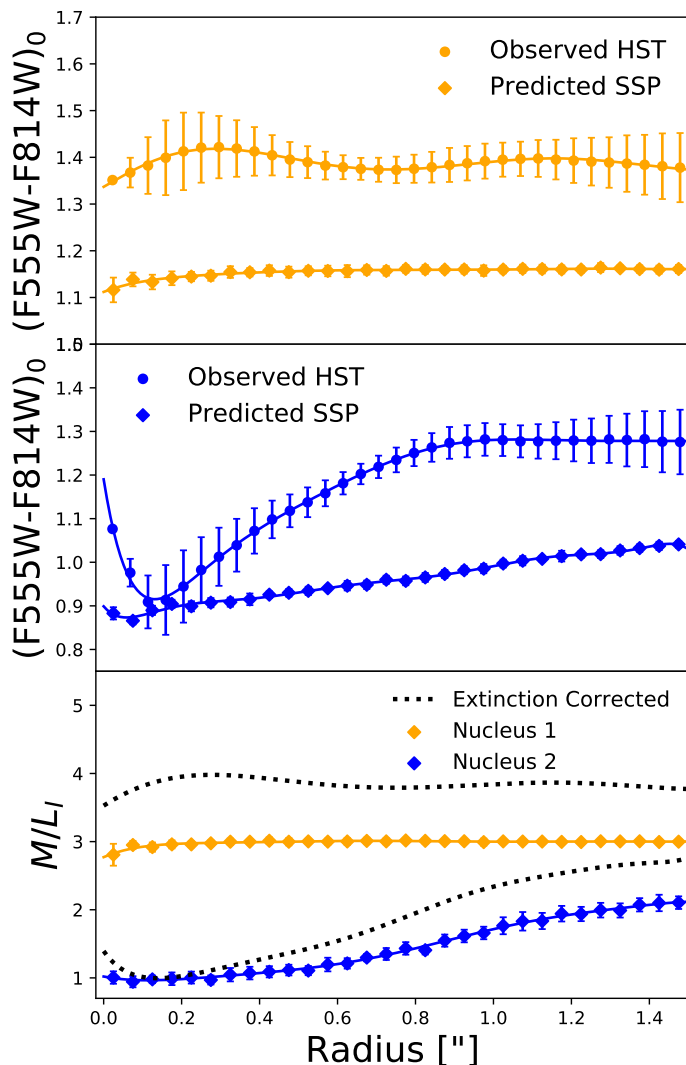
HST PSF effects are known to cause an artificial drop of the colors to the blue in the very central 1-2 pixels (e.g. Ahn et al. 2018). As this is the crucial area for our SMBH determination, we need to carefully calculate this PSF effect on our observed HST color profile. To assess by how much the center of our profile is bluer, we use the unconvolved mock cube from the earlier section and convolve it with the F814W PSF and once with the F555W PSF to mimic an object with constant color profile. The resulting radial F555W-F814W profile drops by  $0.06$  mag towards the blue in the central  $0.05''$  even though we assumed a constant color. Beyond that radius the color profile is not affected significantly. To correct this PSF artefact we add  $0.06$  mag reddening to the central value of the observed HST color profile. We then proceed to derive the overall extinction profile from the derived reddening, with this PSF effect already corrected in the observed HST profile.

### 3.5. Mass-to-light Profiles

In the bottom plot of 6 the predicted  $M/L_s$  profiles from the SSP fits are shown. The effective  $M/L_{\text{eff}}$  that is corrected for internal extinction is shown as black dashed lines. We correct the radial M/L profiles with the internal  $A_{F814W}$  extinction that was calculated in the previous section based on the colour difference between the observed HST colors and the predicted model colors. The effective M/L is then calculated via:  $M/L_{\text{eff}} = M/L_s * 10^{0.4 * A_{F814W}}$ .

The SSP fits clearly show that there is a M/L gradient in Nucleus 2. This is caused by our stellar fits finding Nucleus 2 is dominated by a young and centrally concentrated stellar population. In the center of Nucleus 2 the composition of stellar templates mostly consists of two young 0.8 and 1.5 Gyr and metal rich ( $[Fe/H]=0.06-0.4$ ) templates with a smaller contribution of an intermediate age 6 Gyr template. On average the young population has an age of  $3.25 \pm 0.5$  Gyr whereas the old stellar population has an average age of  $10.24 \pm 1.8$  Gyr. This confirms that the overall color gradient to redder colors at larger radii is due to an age gradient, not a metallicity difference. No metal poor templates below  $[Fe/H] = 0.06$  are used in any of the fits. Only at larger distances above  $0.8''$  the contribution of the old stellar population of NGC 7727 becomes significant.

The significant gradient in  $M/L_{\text{eff}}$  on Nucleus 2 necessitates incorporating a variable M/L into our mass models. The standard JAM models just allow for one constant M/L ratio otherwise. Variable M/L profiles have been used in several previous works that measured the Black Hole masses in nuclei (e.g. Ahn et al. 2018; Nguyen et al. 2017, 2018, 2019) We add the popula-



**Fig. 6.** The radial observed HST  $F555W - F814$  color profiles are compared to the predicted color profiles in the top panel for Nucleus 1 and for Nucleus 2 in the middle panel. The observed HST colors that were corrected for foreground extinction and PSF effects. The relative reddening of the observed profiles is used to calculate the radially dependent internal extinction of the two Nuclei. **Bottom Panel:** Coloured diamond symbols are the predicted radial  $M/L_1$  profiles for both nuclei and the dashed black lines are the  $M/L_{1,\text{eff}}$  profiles that have been corrected for internal extinction.

tion gradient to the JAM models by multiplying our MGE mass models with the extinction corrected  $M/L_1$  profile. The  $M/L_1$  that corresponds to a given MGE Gaussian component is calculated at the radius of the standard deviation of that MGE component. In the JAM models instead of fitting for a  $M/L$  ratio we fit a mass scaling factor  $\Gamma$  that scales the radial mass profile according to the pre-determined stellar mass gradient.

In comparison Nucleus 1 has no such strong  $M/L$  gradient and its  $M/L$  and color profile are near constant within the central  $1.5''$ . The templates stellar fits to the spectra show a consistently old  $12.45 \pm 0.18$  Gyr and metal rich population with  $[\text{Fe}/\text{H}]=0.4$  dex.

## 4. Dynamical Modelling

For modelling the black hole masses, we use Jeans Anisotropic Models (JAM) (Cappellari 2008, 2020). These models solve the

stellar Jeans equations to predict the velocity and dispersion fields based on a mass model of the galaxy. The JAM models need the AO PSF, and the stellar mass profile of the galaxy components that we derived in Section 3 as inputs. The JAM models then solve the Jeans equations to predict the second-order velocity moment  $v_{\text{rms}} = \sqrt{v^2 + \sigma^2}$ , and then integrates to the same spatial bins we use in our MUSE data.

A cut-out of the observed  $v_{\text{rms}} = \sqrt{v^2 + \sigma^2}$  map in the very centers of Nucleus 1 and 2 are shown in the leftmost panel of Fig. 8 and Fig. 11 respectively. These  $v_{\text{rms}}$  maps are the input that is given to the dynamical models.

Our Jeans models have the BH mass, mass-scaling factor  $\Gamma$ , anisotropy  $\beta$  and inclination as free parameters. Usually the mass-scaling factor is equal to the  $M/L$  ratio, but as we include the  $M/L_{\text{eff}}$  gradient that was determined in Section 3.3 this factor does not represent a single  $M/L$  value, but rather a scaling of the  $M/L$  gradient. We use a Markov Chain Monte Carlo (MCMC) sampler to efficiently explore this parameter space. We use the emcee package Foreman-Mackey et al. (2013) which provides a python version of a MCMC sampler. We ran the MCMC chains with 20 walkers and 10 000 steps, and discard the first 150 steps of each walker as the burn-in phase.

### 4.1. Nucleus 1

The MCMC Jeans model derives a best-fit black-hole mass for Nucleus 1 of  $M_{\text{BH}} = 1.54^{+0.07}_{-0.06} \times 10^8 M_{\odot}$ . The corner plot of the distribution of the MCMC realisations is shown in Fig. 7. The model finds a best-fit anisotropy that is mildly tangential but still fully consistent with 0. The best-fit mass scaling factor that scales the derived  $M/L$  profile shown in Fig. 6 is  $\Gamma = 1.14^{+0.03}_{-0.04}$  indicating that the main galaxy is made up of an old stellar population that has a high intrinsic  $M/L_1 \sim 3.4$ , slightly higher than our expected value of around 3 (yellow diamond symbols bottom panel Fig. 6). The total stellar mass of the Bulge plus nucleus of NGC 7727 in our dynamical models is  $M = 5.24 \times 10^{10} M_{\odot}$ . The radius within which the dynamical model was compared to the observed  $v_{\text{rms}}$  maps is  $0.5''$ , which contains 276 individual bins.

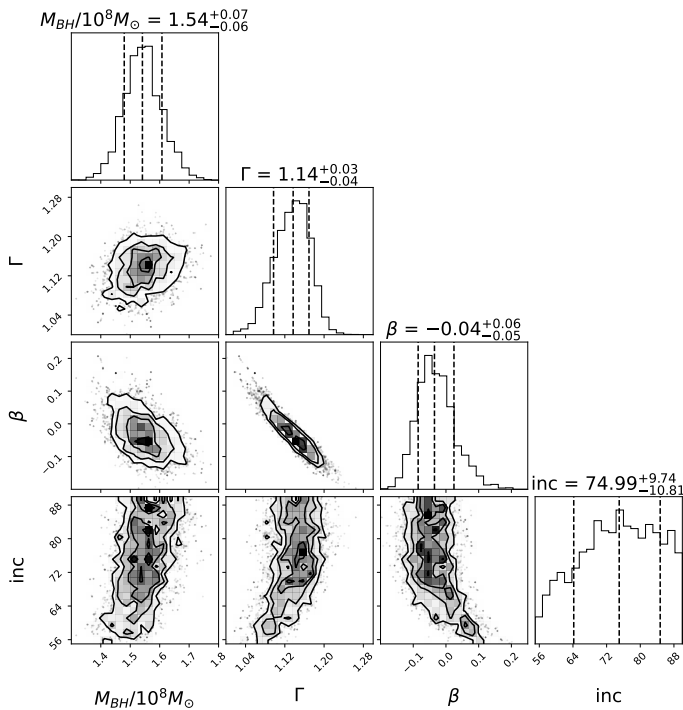
In Figure 8 the  $v_{\text{rms}}$  map of the observed MUSE data is shown on the left, the best-fit model in the middle and the best-fit model that does not allow for a SMBH is shown on the right hand side. The stellar mass model on the right shows that without a BH in the center the  $v_{\text{rms}}$  of NGC 7727 decreases sharply, because the much lower velocity dispersion from the nucleus itself is now dominating the center. Instead a central increase in  $v_{\text{rms}}$  is seen, due to the presence of the SMBH. The theoretical SOI of the best-fit SMBH is given by  $\frac{G \cdot M_{\text{BH}}}{\sigma^2} = 16.86$  pc which is equal to  $0.12''$  or  $\sim 5$  MUSE pixels at this distance. The core component of the MUSE PSF having a FWHM of  $0.07''$  shows that we easily resolve the SOI of this black hole.

The reduced  $\chi^2$  of the best-fit model is 1.36. The difference with the best-fit model that does not allow for a SMBH at all is  $\Delta\chi^2 = 1631$  illustrating that the model requires a SMBH at extremely high statistical significance. In Section 4.3, we show that our measurement errors are systematics dominated, but all models explored retain a significant black hole mass.

### 4.2. Nucleus 2

Nucleus 2 is embedded inside NGC7727, which has a much higher velocity dispersion and thus can artificially raise the inferred velocity dispersion in Nucleus 2. Current state of the art dynamical models cannot include off-center components so we





**Fig. 7.** The corner plot showing the output of JAM models for Nucleus 1, from 10.000 MCMC chain steps, with the first 150 steps discarded as burn-in phase. The best fit BH mass, the mass scaling factor  $\Gamma$ , anisotropy  $\beta$  and inclination angle are shown as marginalised histograms as well as their dependence on each other.

cannot model the main galaxy and Nucleus 2 at the same time. The best solution with these constraints is thus to evaluate the JAM models in a region where the contamination from the underlying galaxy light is negligible. To quantify this effect, we model the relative light contribution of the main galaxy at a given radius from Nucleus 2 and then model how much different relative galaxy contributions raise the velocity dispersion.

Using the two dimensional light profiles of each nucleus and the main galaxy from Section 3.1, we derive the relative light contribution of the main galaxy as a function of distance from Nucleus 2, which is shown in the left panel of Figure 9. This contamination of NGC7727 light decreases towards the center of Nucleus 2 and is  $<15\%$  within the half light radius of Nucleus 2 (black vertical line). We do a similar test using the stellar population models from Section 3.3, where we assume that the light fraction assigned to templates with ages larger than 10 Gyr comes from the body of the galaxy. The main body of the galaxy is uniformly old with only templates above 12 Gyr contributing. The stellar population fits (orange in Fig. 9) show that in the center of Nucleus 2 there is very little contribution of the main galaxy and it is typically lower than the estimate from the light profiles. The two methods give a range of 5-10% of typical galaxy contamination within Nucleus 2.

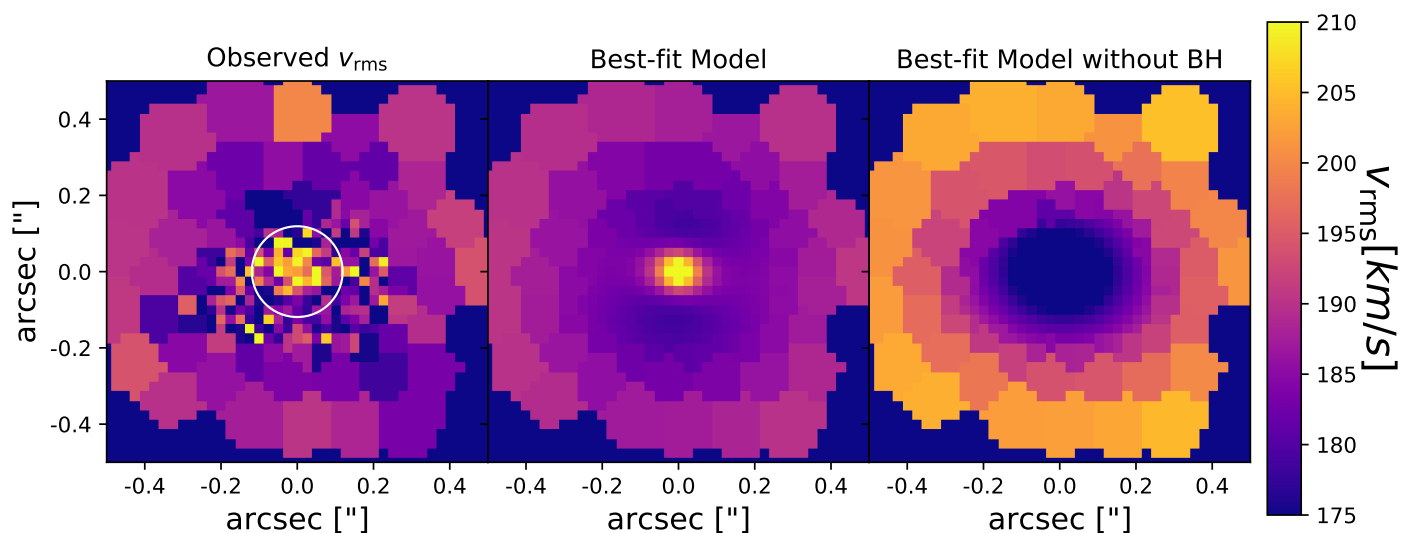
We now model how relative light contributions of the main galaxy increase the inferred velocity dispersion. We use a typical template spectrum for Nucleus 2 and convolve it with a Gaussian velocity dispersion of  $65 \text{ km s}^{-1}$  and one representing the main galaxy convolved with the equivalent of  $140 \text{ km s}^{-1}$ , the dispersion of the main galaxy at the distance of Nucleus 2. We then co-add these two spectra with relative light contribution of the main galaxy ranging from 0-95% in 5% increments. We run pPXF on these artificial test spectra to determine their velocity dispersion. The results of that test are shown in the right

panel of Fig. 9. We find that for galaxy light contaminations of up to 15% (shaded area) the increase in velocity dispersion is below  $5 \text{ km s}^{-1}$ . This is similar to our typical errorbars on the  $v_{rms}$  of  $4\text{-}5 \text{ km s}^{-1}$ . Therefore, the effect of the main galaxy on the dispersion in the center of Nucleus 2 where we look for the BH signal should be small. In addition, the contamination increases the dispersion towards the outskirts of Nucleus 2 and it thus would decrease a typical SMBH signal rather than mimic a central rise. Therefore this effect would only bias us towards a too low BH mass. We thus evaluate the JAM models within a radius  $r < 0.35''$ , covering almost twice the half light-radius and has 88 kinematic bins, of which the vast majority of bins are within the half light radius of Nucleus 2 where we expect very little galaxy contamination.

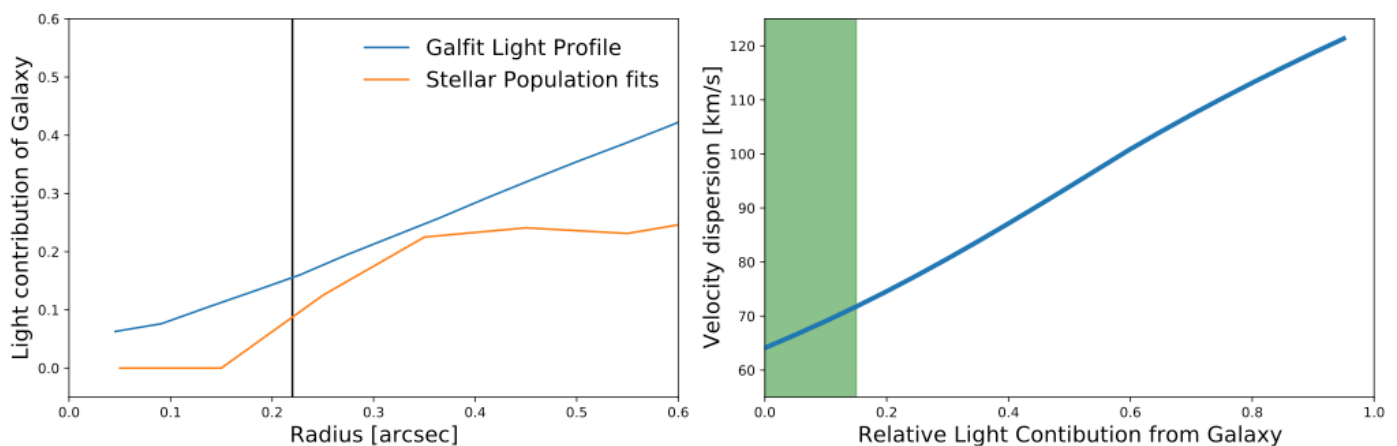
We derive a best-fit black hole mass for Nucleus 2 of  $M_{BH} = 6.33^{+1.59}_{-1.40} \times 10^6 M_{\odot}$ . The corner-plot with the results of the MCMC realisations is shown in Fig. 10. The reduced  $\chi^2$  of the best-fit model is 1.63 showing that we get a decent fit to our data. The statistical significance of the detection from the marginalised SMBH mass distribution is 4.5 sigma. The best-fit  $\beta = 0.07^{+0.05}_{-0.04}$  shows that the nucleus exhibits a small level of anisotropy. The anisotropy is degenerate with inclination, with lower values of anisotropy for edge-on inclinations. The black-hole mass does not depend on the inclination and only a small correlation with  $\beta$  is observed. The best-fit mass scaling factor is  $\Gamma = 1.00 \pm 0.03$  which is exactly what one would expect for an accurate mass model.

The statistical uncertainty on the MCMC run in Fig. 10 indicates that the BH mass is detected at  $\sim 5\sigma$  significance when assuming that our errors are Gaussian. However to further test the significance we run a set of dynamical models where we force a zero mass SMBH. The best fit for the model without SMBH is worse by a  $\Delta\chi^2 = 18.7$ , ruling out the no black hole model at  $8 \times 10^{-5}$  confidence level, indicating that a model containing a SMBH is strongly preferred. This way of assessing the statistical confidence is almost identical to the  $4.5\sigma$  level derived from the marginalised SMBH mass distribution. The  $v_{rms}$  map of the observed MUSE data, the best-fit model, as well as the best-fit no SMBH model are shown in Figure 11. This comparison illustrating the need for a SMBH in the center of the Nucleus 2. In the model not allowing for a SMBH there is a decline in  $v_{rms}$  at the center, contrary to the observed rise. The SOI of this SMBH embedded in Nucleus 2 is  $\text{SOI} = 10.45 \text{ pc}$  ( $0.08''$  at this distance). This is within the resolution range of the two core components of the PSF component that have a combined FWHM of  $0.07''$ .

The total stellar mass of Nucleus 2 is  $2.10 \times 10^8 M_{\odot}$ . The best-fit BH makes up 3.0% of this stellar mass. Nucleus 2 has a stellar mass that is well below what was predicted in Schweizer et al. (2018). This difference is likely due the literature integrated dispersion being  $\sigma = 79 \text{ km s}^{-1}$  and thus  $12 \text{ km s}^{-1}$  larger than the  $\sigma = 66.3 \pm 1.3 \text{ km s}^{-1}$  we find as integrated value for Nucleus 2. The slit used to take their spectra was  $1''$  long and thus picking up a lot of galaxy light, which starts to dominate the light at  $\sim 0.7''$  from Nucleus 2, and our measurement integrates the light within the  $0.3''$  circular aperture. This effect is visible in the right panel in Fig. 9 where we tested the increase in velocity dispersion due to an increasing contribution of the main body of the galaxy. At a contribution of 50% from the underlying galaxy the predicted velocity dispersion would be  $90 \text{ km s}^{-1}$  due to this contamination. For the small aperture of  $0.3''$  we predict a contamination of less than 10% which will raise the velocity dispersion by less than  $5 \text{ km s}^{-1}$ .



**Fig. 8.** The  $v_{\text{rms}}$  maps centered on Nucleus 1. Left panel shows the observed MUSE map, including a circle that marks the sphere-of-influence, in the middle is the best-fit model and on the right is the best-fit model for a MCMC run when not allowing for a black hole at all. The typical errors on the  $v_{\text{rms}}$  values in the MUSE map are  $4 \text{ km s}^{-1}$ .



**Fig. 9.** **Left:** The relative light contribution of the main galaxy shown as radial profile from the center of Nucleus 2. One time based on the individual light profiles and once by using the relative contribution of old stellar population templates in the fits. The back vertical line marks the half light radius of Nucleus 2. **Right:** Velocity dispersion derived with pPXF from spectra that contain increasing relative amounts of galaxy light. The green shaded region marks the relative contribution range we expect within the half light radius of Nucleus 2.

#### 4.3. Systematic Uncertainties of the SMBH mass measurement

In the last section we calculate the formal statistical errors of the BH mass measurement, however models with a large number of data points can result in stronger constraints on the fitted parameters, which makes it easier for the systematics to dominate. We investigate these systematic uncertainties, by varying the model assumptions we make in our analysis and quantifying the impact on the SMBH mass determination. The cumulative likelihood of all these tests are shown in Figure 12. In particular, we tested how the wavelength dependent AO PSF influences our results by using PSFs derived at a wavelength of  $6000\text{\AA}$  and at  $8000\text{\AA}$  instead of the default PSF at  $7500\text{\AA}$ . Their Gaussian expansion is shown in Table 2. In both nuclei using the bluer  $6000\text{\AA}$ , PSF increases the SMBH mass to just below the  $1\sigma$  level. When modelling the SMBH with the  $8000\text{\AA}$  PSF that is more centrally concentrated, the SMBH mass for Nucleus 1 decreases only insignificantly, while for Nucleus 2 it decreases to around the  $1\sigma$

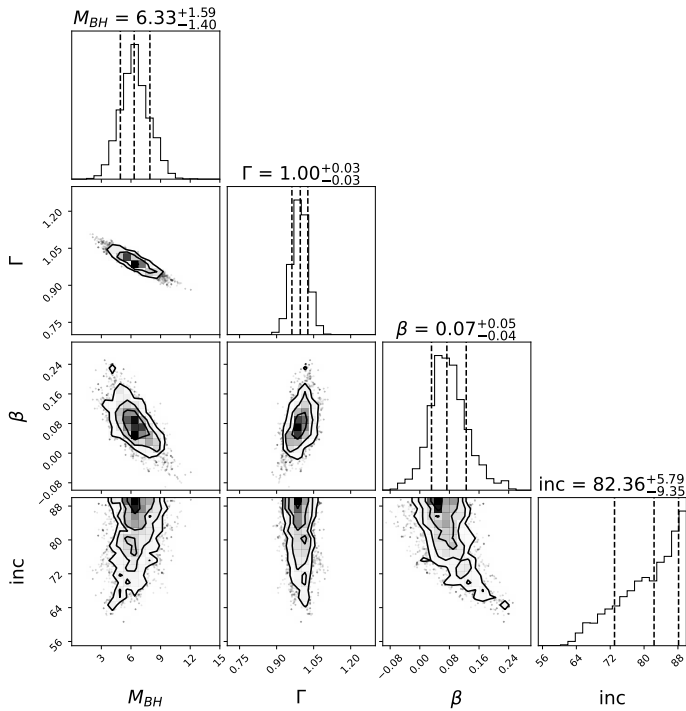
limit. For Nucleus 2 the uncertainties derived from the PSF are clearly the dominating systematics and they exactly encompass the  $1\sigma$  range we derived with our MCMC runs.

To test the uncertainties in our mass models, we use the Padova (Girardi et al. 2000) instead of the Basti SSP models when deriving the input  $M/L_I$  profile. For both Nuclei the change in stellar templates in our population determination has negligible effects on the SMBH mass and are consistent with the error-bars.

We also tested how robust the JAM models are against our extinction correction. The runs without any extinction correction so little to no difference to the default models and thus the models are not sensitive to this parameter.

Another test is run by using the best-fit F555W Galfit models instead of the default model based on the F814W band. We chose the redder band in our default model, because these wavelengths are less affected by dust. For Nucleus 2 the change of band in which we model the stellar population has no effect on the SMBH mass determination. In Nucleus 1 however the





**Fig. 10.** The corner plot showing the output of JAM models for Nucleus 2, from 10.000 MCMC chain steps with the first 200 steps of the burn-in discarded. The best fit BH mass, the stellar mass scaling factor  $\Gamma$ , anisotropy  $\beta$  and inclination angle are shown as marginalised histograms as well as their dependence on each other.

new model in F555W has a significantly smaller SMBH mass of  $1.4 \times 10^8 M_\odot$  than the default model. This change in SMBH mass is caused by the higher Sérsic Index of Nuclei 1 in the F555W model with  $n=1.99$  vs. 1.51 in the old F814W model. This uncertainty in its light profile is likely due to the significant dust contribution around Nuclei 1 which makes modelling it in F555W harder (and likely less accurate) than in F814W. We will use this largest variation as lower boundary for our SMBH mass estimate. This systematic uncertainty amounts to 9% in the SMBH mass. Nucleus 1 has reached a regime where mass determination is dominated by systematics in the modelling and not by statistics of the observations, which are very small due to the large number of spaxels.

Nucleus 2 shows an increase in its central M/L we test whether this could be due to radially varying anisotropy that could mimic the BH signal. For this we assigned three different  $\beta$  that could vary individually without being tied to each other. We assigned the 4 MGE components with radii less than  $0.05''$  to be  $\beta_1$ , the three MGEs from  $r=0.1-0.3''$   $\beta_2$  and the three outer component are characterised by  $\beta_3$ . The full MCMC run finds isotropy in the center with  $\beta_1 = 0.01$  and the two outer components being mildly anisotropic with  $\beta_{2,3} = 0.06$ . The SMBH mass in this run is  $6.82 \times 10^6 M_\odot$  and thus even higher than for a model which only allows for a single anisotropy. Therefore, we do not find any evidence for strong radial anisotropy that could mimic the signal of AMBH in the center of Nucleus 2, even when we allow it to vary radially. This finding is consistent with what has been found for Omega Cen in Zocchi et al. (2017) where the center is isotropic and the intermediate parts are radially anisotropic.

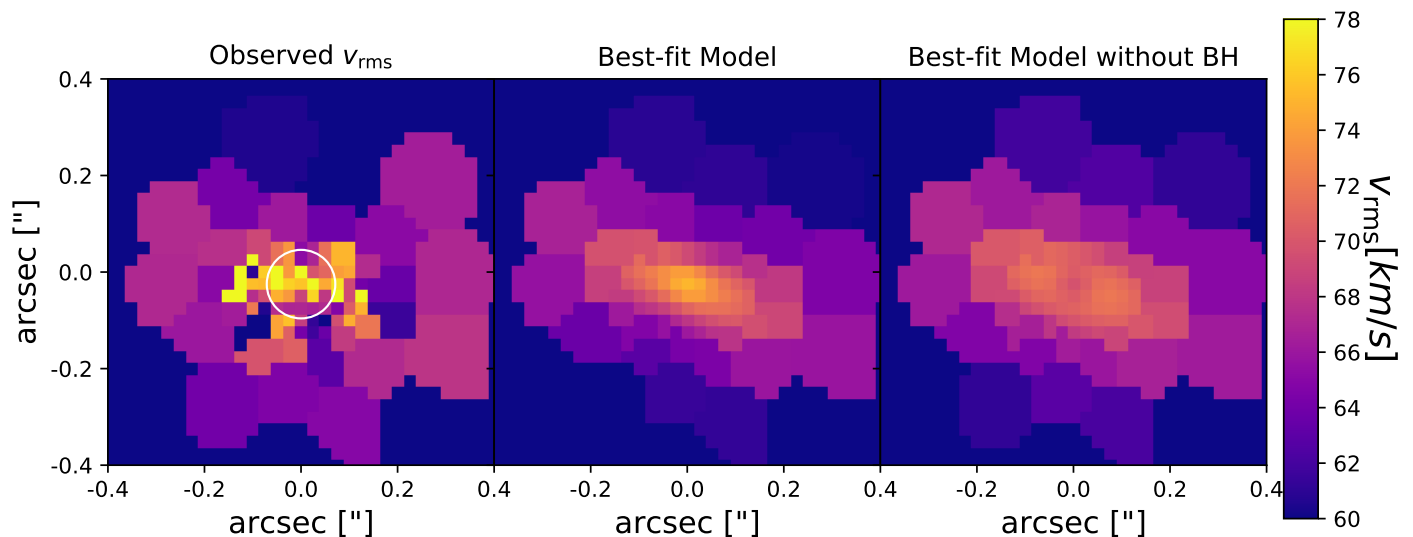
We also tested whether our Nuclei are better modelled using JAM models where the velocity ellipsoid is spherically aligned (Capellari 2020). In this case, the SMBH mass for Nucleus

2 is significantly higher in these spherical models, while the anisotropy becomes mildly tangential with  $\beta=-0.07$ . The tangential anisotropy leaves more room for a SMBH in the model, but as we typically do not observe nuclei or star clusters with high central tangential anisotropies we do not adopt this model as our default. For Nuclei 1 using a spherical model similarly results in a significantly higher SMBH mass of  $1.69 \times 10^8 M_\odot$  while also leading to a significant tangential anisotropy of  $\beta = -0.25$ . Similar to Nucleus 2 this high level of tangential anisotropy is not typically observed and thus unrealistic.

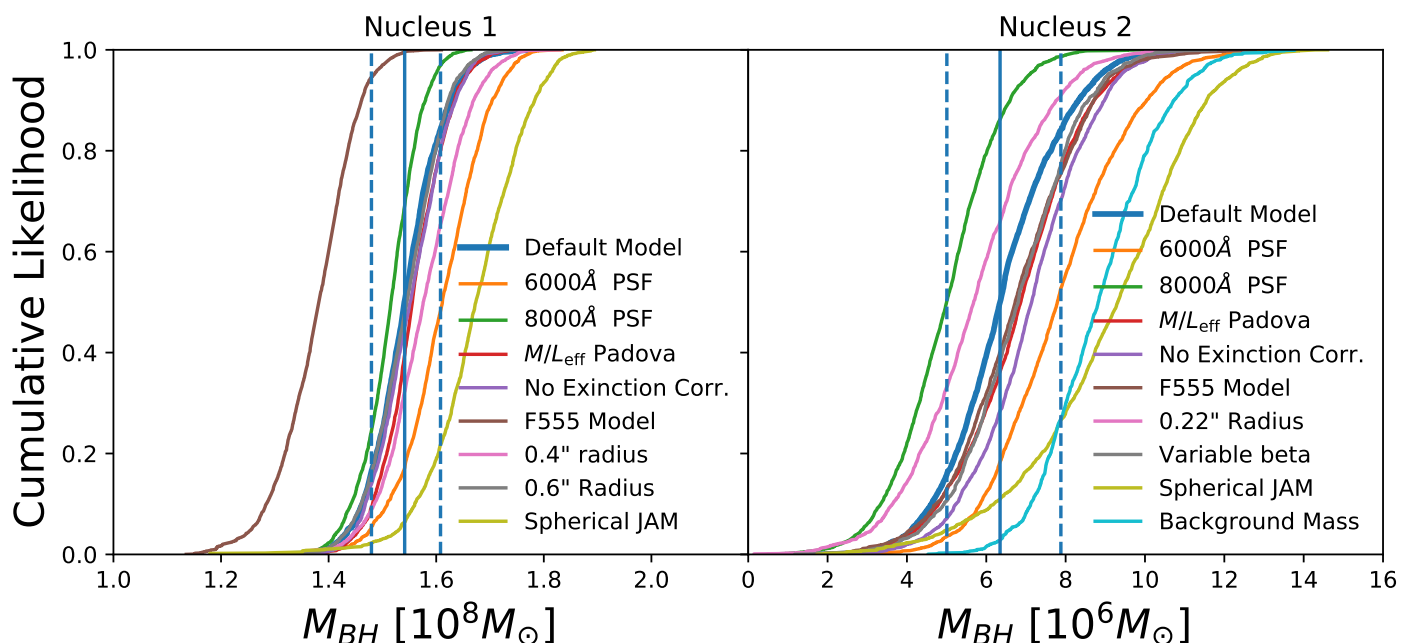
Finally, we tested whether increasing or decreasing the fitting radius in which the JAM model is evaluated has any effect on the BH measurement in Nucleus 1. The default model uses a  $0.5''$  limit and we tested  $0.4''$  and  $0.6''$  as variations. For both fitting radii, the SMBH mass of Nucleus 1 is fully consistent with our default model. Due to Nucleus 2 being off-center we can only evaluate the region within  $0.35''$  that is directly dominated by Nucleus 2 in the dynamical models as explained in Section 4.2. Therefore we only add a test with a smaller radius of  $0.22''$ , which is equal to the half light radius of Nucleus 2. The SMBH mass in that model is slightly smaller than our default but well within our  $1\sigma$  uncertainties.

One limitation of JAM models is that they do not allow mass contributions that are off-center. To include the underlying mass of NGC7727 and its dark matter, we incorporate a MGE component in the surface potential of the Jeans models that approximates their mass contribution as locally constant. This locally flat component can be achieved by adding a Gaussian MGE component with a larger radius than Nucleus 2 itself ( $2''$  were used in this case). Using the surface density determined in the JAM models of Nucleus 1 we find the surface density of NGC7727 at the location of Nucleus 2 to be  $1.4 \times 10^4 M_\odot/pc^2$ . As we have no large scale kinematic data to measure the Dark Matter mass we need to estimate its density at the location of Nucleus 2. NGC 7727 has a total stellar mass of  $M = 1.3 \times 10^{11} M_\odot$  (Schweizer et al. 2018) and thus we expect it to reside in a  $\sim 10^{13} M_\odot$  dark matter halo assuming a typical stellar mass to halo mass relations (e.g. Behroozi et al. 2013). Using the stellar-to-halo radius relation (e.g. Jiang et al. 2019) we estimate that the virial Dark Matter halo radius of NGC 7727 should be  $\sim 90$  kpc based on its stellar radius of  $r_e = 3.7$  kpc. With a concentration index of  $c=15$  and the total halo mass, we calculate the predicted DM density assuming a NFW halo profile at 500pc from the galaxy center to be  $2 M_\odot/pc^3$ . Projected this is equal to a surface density of  $80 M_\odot/pc^2$ , showing how the center of the galaxy is completely dominated by the stellar mass. We add these two surface densities to the gravitational potential in the JAM models of Nucleus 2. The results of this test with an additional background mass component (Fig. 12) the best-fit SMBH is  $8.3 \times 10^6 M_\odot$  and thus larger than in our main models. Therefore, even when accounting for the galaxy mass in the background the observed kinematics absolutely require a massive black hole. Without a SMBH a central drop in dispersion is seen and a SMBH is again required at high significance. The findings from our  $v_{rms}$  test in section 4.2 showed the same effect: contamination by the background galaxy results in a modestly higher SMBH mass. Given that this effect we have tested is the maximum effect (i.e. Nucleus 2 could be at larger physical radius than its projected radius) and offsets the BH mass by only a bit more than our  $1\sigma$  upper limit, we do not incorporate this component into our default model.

Besides the spherical JAM model and the background mass model, all other tested variations of the JAM model inputs of Nuclei 2 are consistent with the errors of the best-fit BH mass measurement, indicating that our statistical errors of 22% are



**Fig. 11.** The  $v_{\text{rms}}$  maps centered on Nucleus 2. Left panel shows the observed MUSE map, in the middle is the best-fit model and on the right is the same model but without a black hole. The white circle marks the SOI of  $0.08''$ . The typical errors on the  $v_{\text{rms}}$  values in the MUSE map are  $4\text{ km s}^{-1}$  and thus while the observational scatter appears large it is consistent with the best-fit model in the center with a reduced  $\chi^2$  of 1.6. Also note the small velocity scale of the colorbar, which covers only  $18\text{ km s}^{-1}$  to give sufficient contrast in displaying the models.

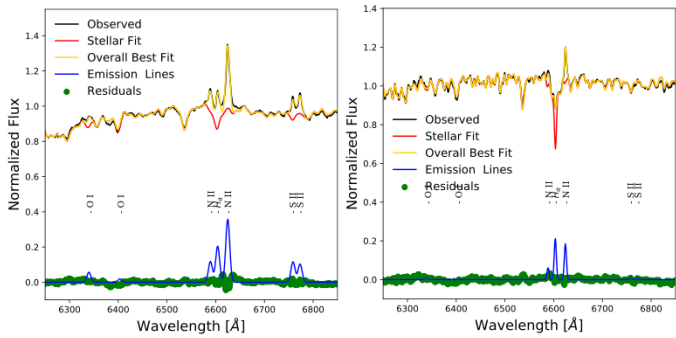


**Fig. 12.** The cumulative likelihood distribution of BH masses for both black holes in Nucleus 1 and 2. The blue curve is the default model for both nuclei and the dashed lines are the  $1\sigma$  levels of the default model. The cumulative distribution of variations of the model inputs, such as the PSF and  $M/L_{\text{eff}}$  are shown as colored distributions.

large enough to encompass typical uncertainties in our modelling. The dominant systematics are the knowledge of the AO PSF that encompass our  $1\sigma$  range. The spherical JAM model allows for a higher BH mass and is the only one that finds a tangential anisotropy, which we do not typically observe in other stripped nuclei (Seth et al. 2014; Ahn et al. 2017; Voggel et al. 2018). However, in the Milky Way and Cen A nuclear star cluster there is some evidence for central tangential anisotropy near the SMBH (Cappellari et al. 2009; Feldmeier-Krause et al. 2017). The dominant systematics for the upper limits are the treatment of the background galaxy with our test showing up to a 25% larger SMBH is possible. Thus we quadratically add the largest systematic in the upper limit (spherical model) of

Nucleus 2 quadratically to the error for a final SMBH mass of  $M_{\text{BH}} = 6.33^{+3.32}_{-1.40} \times 10^6 M_{\odot}$ . It is important to note that none of the model variations allow for a zero BH model in any of the models, making our SMBH detection extremely robust against systematic effects.

For Nucleus 1 the F555 model and the spherical model lie outside the  $1\sigma$  regime, indicating that we are in a regime that is dominated by systematic uncertainties in our modelling rather than statistics. The statistical errors are only 3.9% of the SMBH mass in Nucleus 1. To provide more realistic errors include also systematic uncertainties in the SMBH mass of Nucleus 1, we add the statistical errors and the largest derived systematic uncertainty of  $\text{err}_{\text{sys}} = {}^{+0.17}_{-0.14}$  quadratically to Nucleus 1 for a fi-



**Fig. 13.** Part of the integrated spectra of Nucleus 1 (left panel) and Nucleus 2 (right panel) zoomed onto the area containing the [NII]6583,  $H\alpha$ , and both [SII] lines. The overall best pPXF fit is shown in yellow and the stellar-component is shown in red and the emission lines in blue.

nal SMBH mass with total uncertainties of  $M_{\text{BH}} = 1.54^{+0.18}_{-0.15} \times 10^8 M_{\odot}$ .

## 5. AGN Signatures

There is additional support for the presence of black holes in both nuclei of this galaxy from their emission lines. It was already reported in Schweizer et al. (2018) that Nucleus 1 is consistent with a low-ionization nuclear emission-line region (LINER) emission profile, but did not found significant X-ray emission at Nucleus 1 that point to an AGN origin. Nucleus 2 hosts a X-ray source with a luminosity of  $L=2.8 \times 10^{39} \text{ erg s}^{-1}$  (Brassington et al. 2007).

We investigate the emission line ratios of both nuclei by plotting them on the diagnostic BPT diagram. This diagnostic plot is commonly used to discriminate between AGN and star-forming regions (Kewley et al. 2001). We use the line fluxes as determined by pPXF in Section 2 when we simultaneously fitted the stellar and gas components. The code provides the fluxes of the individual lines within the spectral range:  $H\beta$ ,  $H\alpha$ , [SII] $\lambda$ 6716, [SII] $\lambda$ 6731, [OIII] $\lambda$ 5007, [OI] $\lambda$ 6300 and [NII] $\lambda$ 6583. The region of the MUSE spectra that contains [NII] $\lambda$ 6583,  $H\alpha$  and both [SII] emission lines is shown in Figure 13 for the integrated spectra (within  $r < 0.2''$ ) of Nucleus 1 and 2 respectively.

In Figure 14 the three common BPT diagnostic plots are shown and the flux ratios of Nucleus 1 and 2 are shown as solid colored triangle and circle respectively. These are the flux ratios of the integrated spectra. We can only determine an upper limit for the flux of  $H\beta$  and [SII] in Nucleus 2 which is indicated as arrow. All other lines are significantly detected.

Nucleus 2 is solidly in the Seyfert region of all three panels in the BPT. This provides strong independent evidence that Nucleus 2 is indeed hosting a SMBH and is also a low-luminosity AGN. The uncertainty in  $H\beta$  does not affect this conclusion as we derive a *lower* limit, thus the real [OIII] $\lambda$ 5007/ $H\beta$  line ratio might be even higher which only puts it further into AGN territory in the diagnostic plots. With an X-ray luminosity of  $L=2.8 \times 10^{39} \text{ erg s}^{-1}$  Nucleus 2 is above the  $10^{39} \text{ erg s}^{-1}$  cut-off luminosity for low-mass X-ray binaries, which are extremely rare at higher luminosities. High-mass X-ray binaries can also cause such X-ray luminosities but they only exist in stellar populations young than 100Myr (Fabrika et al. 2021) of which we do not find any in our stellar population analysis.

It is also unlikely that the X-ray signal is caused by an accumulation of X-ray binaries that have sunken to the center due to mass segregation as for this the relaxation timescale

**Table 3.** Summary of the Main Results for Nucleus 1 and 2

Name	Nucleus 1	Nucleus 2
R.A.	23:39:53.796	23:39:53.679
DEC.	-12:17:34.04	-12:17:30.83
$M_{\text{BH}} [M_{\odot}]$	$1.54^{+0.18}_{-0.15} \times 10^8$	$6.33^{+3.32}_{-1.40} \times 10^6$
$M_{\text{Bulge}} [M_{\odot}]$	$5.24 \times 10^{10}$	$2.10 \times 10^8$
Integrated $\sigma$ [ $\text{km s}^{-1}$ ]	$191.2 \pm 1.5$	$66.3 \pm 1.3$
Velocity [ $\text{km s}^{-1}$ ]	$1794.9 \pm 1.9$	$1839.2 \pm 1.8$

would have to be on the order of the age of the universe or shorter. We calculate the relaxation timescale in the center of Nucleus 2 based on equation 8-71 from Binney & Tremaine (1987). Using a stellar density in the central 5pc of Nucleus 2 of  $\rho = 4 \times 10^3 M_{\odot} \text{pc}^{-3}$ , an average stellar mass of  $0.7 M_{\odot}$  and a velocity dispersion of  $\sigma = 70 \text{ km s}^{-1}$ , we derive a relaxation timescale of  $t_{\text{rel}} = 105 \times 10^9 \text{ yrs}$ . With a relaxation time almost an order of magnitude large than the age of the universe its unlikely that significant mass segregation has happened in the center of Nucleus 2.

Therefore the combination of the optical emission lines, X-ray source and our dynamical SMBH detection, there is strong evidence Nucleus 2 hosts a low luminosity AGN. A typical value observed for the bolometric correction is  $L_{\text{X}}/L_{\text{bol}} \sim 16$  (Ho 2009) and thus a rough estimate for Nucleus 2 provides  $L_{\text{bol}} = 4.5 \times 10^{40} \text{ erg/s}$  and therefore an Eddington accretion ratio of  $L_{\text{bol}}/L_{\text{edd}} = 3 \times 10^{-5}$ . This puts Nucleus 2 in the typical range of observed low-luminosity Seyfert AGN.

Nucleus 1 is well within the AGN region of all three BPT diagnostic panels. Its integrated line ratio is right at the border between Seyfert galaxies LINERs. However, due to the absence of an X-ray source in Nucleus 1 (see Schweizer et al. 2018 for a discussion) the source of this ionizing radiation is not certainly the SMBH in its center. LINER emission can either be caused by a SMBH or the emission of hot stars in the post-AGB phase. These stars are common in very old stellar populations as is the case for Nucleus 1. In the absence of an X-ray signal, Nucleus 1 cannot immediately be classified as an active SMBH. While it could be caused by the SMBH in its center it is also possible that it is caused by the emission of hot post-AGB stars. Thus, only the SMBH in Nucleus 2 is actively accreting.

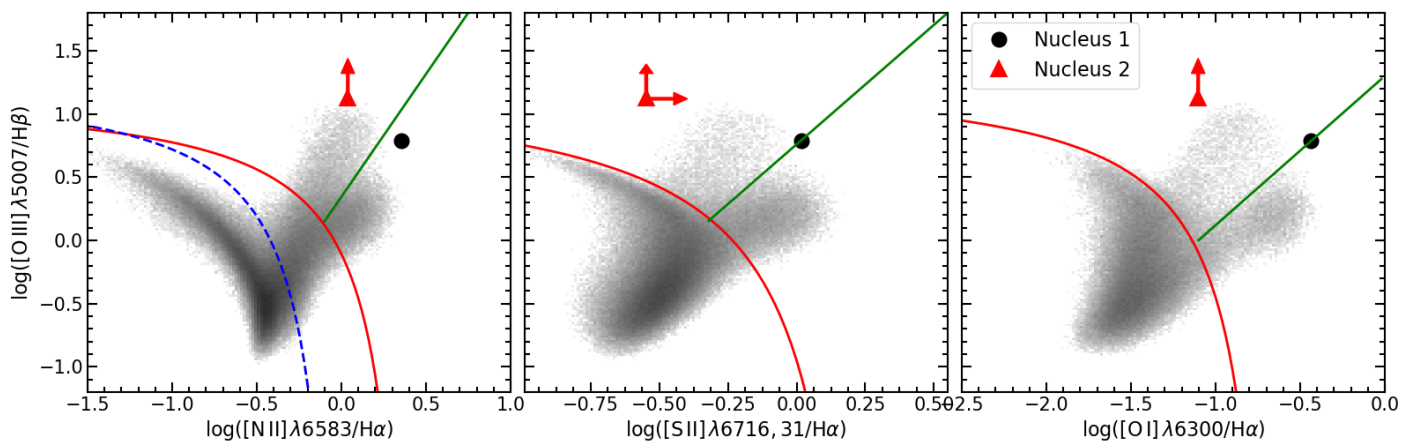
## 6. Discussion

In this work we have tested whether NGC 7727 hosts a double SMBH system. This galaxy has a main nucleus at the photometric center of the galaxy, and a second object that appears like a nucleus as well and is offset from the center by only 500 pc. There was indirect evidence for a possible SMBH in both nuclei (Schweizer et al. 2018). We tested this hypothesis by using adaptive-optics supported MUSE kinematical data centered on NG7727 to resolve the sphere-of-influence of both putative SMBHs and measure their masses. From our dynamical modelling we find that both nuclei indeed host a SMBH. In this Section we discuss this result in the context of Nucleus 2 being a stripped former galaxy nucleus and the implications of this tight double SMBH system.

### 6.1. The nearest and closest dynamically confirmed dual SMBH system

We detect the dynamical signature of super-massive black holes in both nuclei of NGC 7727, confirming it as a close dual





**Fig. 14.** The three diagnostic BPT diagrams for Nucleus 1 (black point) and Nucleus 2 (red triangle). The grey datapoint are taken from the SDSS DR7 MPA-JHU catalogue of Brinchmann et al. (2004). The solid red line denotes the maximum location of starbursts by Kewley et al. (2001), the dashed blue line is the star-forming boundary suggested by Kauffmann et al. (2003), and the green line is the division between Seyfert Galaxies and LINERS (Kewley et al. 2006).

SMBH. In Nucleus 1 we found a BH with a mass of  $M_{\text{BH}} = 1.54^{+0.18}_{-0.15} \times 10^8 M_{\odot}$  and in Nucleus 2 a SMBH with a mass of  $M_{\text{BH}} = 6.33^{+3.32}_{-1.40} \times 10^6 M_{\odot}$ . The two SMBHs have an apparent separation of  $\sim 500$  pc. This makes them the closest known SMBH pair. All previous confirmed dual SMBHs have a separation of 1 kpc or more (Husemann et al. 2018; Kollatschny et al. 2020). The SMBH in Nucleus 2 has 4.1% of the mass compared to the central SMBH in Nucleus 1 and thus the SMBHs have a 1:24 mass ratio.

In order to get an estimate for the inspiral time of Nucleus 2, we run simulations its orbit in the centre of NGC 7727 under the influence of dynamical friction. We assume a mass of Nucleus 2 of  $2 \times 10^8 M_{\odot}$ , the current projected distance of 480 pc between the nuclei and a relative velocity of  $45 \text{ km s}^{-1}$  between Nucleus 1 and 2 as starting conditions. We also assume a range of  $z$  distances randomly distributed between 0 and 3 kpc, and random tangential velocities between 0 and  $200 \text{ km sec}^{-1}$ . We find a typical merger time of 250 Myr and that basically all cases merge within 1 Gyr. Thus making it likely that this system merges soon and the SMBH-SMBH merger has a 1:24 mass ratio.

With its 27 Mpc in distance, NGC 7727 is the dual SMBH system closest to us. Before this work, the closest known dual SMBH was NGC 6240 (Komossa et al. 2003; Kollatschny et al. 2020), which at 144 Mpc is almost 6 times as far away from us than NGC 7727. In NGC 6240 similar MUSE data was used to study the system but only the nuclear components could be spatially separated from each other. Resolving the sphere-of-influence dynamically at these distances is impossible with current IFU instrumentation. Typical catalogues of dual SMBHs/AGNs focus on systems that are even further away, usually at distances of  $z > 0.2$  ( $\sim 800$  Mpc). This illustrates how the proximity of NGC 7727 at only 27 Mpc allows us to study dual SMBHs in more detail than any other known system.

## 6.2. Surviving Nuclear Star Clusters are Outliers to the Black Hole Scaling Relations

Super-massive black holes and their stellar components obey two tight scaling relations, the  $M_{\text{BH}} - \sigma$  relation between the mass of the SMBH and the velocity dispersion of its bulge, and the one between BH mass and bulge mass (see e.g. Kormendy & Ho 2013 for a detailed Review). In Fig. 15 we show the two

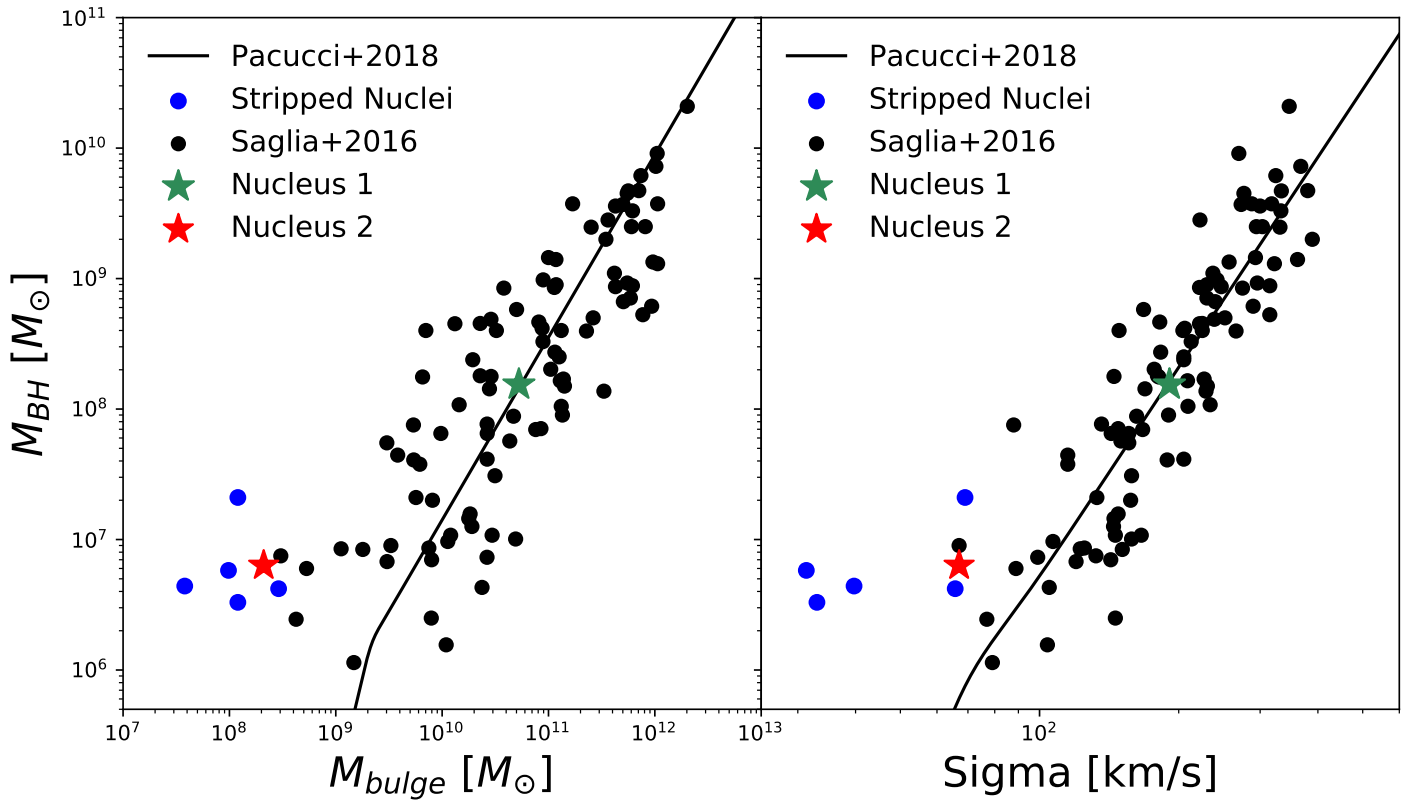
BH scaling relations, with the data of the compilation of (Saglia et al. 2016) in black and the 5 known stripped nuclear star clusters with SMBHs in blue (Seth et al. 2014; Ahn et al. 2017, 2018; Afanasiev et al. 2018). The SMBHs in Nucleus 1 and 2 are shown in green and red respectively. The black line is the relation from Pacucci et al. (2018) and the dashed line indicates systems where the BH is exactly 5% of the bulge mass.

The SMBH in Nucleus 1 falls right onto both the BH scaling relations, meaning that its SMBH is exactly as massive as predicted for its Bulge mass of  $M = 5.24 \times 10^{10} M_{\odot}$  and integrated velocity dispersion of  $\sigma = 191 \text{ km s}^{-1}$ . In contrast Nucleus 2 is significantly offset to the left of the relation and falls exactly in the area of the other known surviving nuclear clusters with a SMBH (shown in blue). All the surviving nuclear clusters with SMBHs have over-massive SMBHs compared to the  $M_{\text{BH}}$ -Bulge relation, with BH mass fractions between 2-15% of their total mass. Nucleus 2 hosts a similarly over-massive SMBH with 3.0% of its total mass. This population of outliers with over-massive SMBHs, to the left of the scaling relations has been predicted theoretically in SMBH formation simulations when galaxies get tidally destroyed (Volonteri et al. 2008, 2016; Barber et al. 2016).

Other galaxies such as NGC 3368 that fall close to the area of stripped nuclei in the scaling relations are large spiral galaxies with physical sizes on the order of kpc, who have an abnormally small (pseudo-)bulge and are thus relative outliers to the relation (Nowak et al. 2010). In contrast to these objects, stripped nuclei have typical physical sizes of 10-35 pc that are comparable to nuclear star clusters and not large galaxies.

## 6.3. Nucleus 2 as Former Nuclear Star Cluster of a Merged Galaxy

The existence of a SMBH in Nucleus 2 is expected if it is the stripped nucleus of a merged galaxy. While there are only a handful of direct dynamical confirmations of SMBHs in surviving nuclei, a statistical analysis has recently shown that such relics of the merging process should be very common in the local Universe (Voggel et al. 2019). The confirmation of stripped nuclei has been mainly based on the presence of a SMBH in their centers (Seth et al. 2014; Ahn et al. 2017, 2018; Afanasiev et al. 2018) that is so over-massive (2-15% of the total mass) that it



**Fig. 15.** Left Panel: The Bulge- $M_{\text{BH}}$  relation with data points of Saglia et al. (2016) is shown in black and the confirmed stripped nuclear star clusters with SMBHs are shown in blue (Seth et al. 2014; Ahn et al. 2017, 2018; Afanasiev et al. 2018). Nucleus 1 is marked by a green star, where Nucleus 2 and its SMBH are marked by a red star symbol. The relation of Pacucci et al. (2018) is shown as a solid line in both panels, with a constant SMBH mass fraction of 5% shown by a dashed line in the left panel.

cannot be formed in any known stellar processes. The SMBH in Nucleus 2 is similar, and makes up 3.0% of the total mass of Nucleus 2, which puts it right in the typical mass range of other surviving star clusters (Voggel et al. 2018).

However the main difference to the other known surviving nuclei is that Nucleus 2 is in close proximity to the center of its host galaxy whereas all other stripped nuclei are out in the halo, far from the center of their host galaxy at typical distances of  $> 6$  kpc. In addition Nucleus 2 is embedded in a blue tidal stream and NGC 7727 and its general disturbed morphology (Schweizer et al. 2018) points to a recent merger. With the confirmation of the SMBH in Nucleus 2 the evidence is strong that Nucleus 2 has been caught in the process of being stripped from its host galaxy. Thus it is a rare direct glimpse into the process of stripped nuclei formation as well as SMBH assembly through mergers.

Using the  $M_{\text{BH}}$ -Bulge relation we can estimate that the mass of the progenitor galaxy bulge to have been  $M = 5.2 \times 10^9 M_{\odot}$ . This indicates that former host galaxy had a bulge that was an order of magnitude smaller than the bulge of NGC 7727. However this comparison does not take into account the mass of the disks in both galaxies. To do this we use the estimate of NGC 7727 total stellar mass of  $1.35 \times 10^{11} M_{\odot}$  (Schweizer et al. 2018). With the young stellar age of Nucleus 2 and the blue stellar stream its a reasonable assumption that the progenitor galaxy had a sizeable stellar disk that makes up at least twice the stellar mass of its bulge. This results in a total merger mass ratio of 1:5 indicating that it was a minor merger event that created NGC 7727 disturbed morphology.

Additional evidence that Nucleus 2 is the accreted nucleus of a merged galaxy is its very blue color and young stellar population that is at odds with having formed within NGC 7727,

whose stellar population is uniformly red and old ( $\sim 13$  Gyr). The several tidal streams and structures surrounding NGC 7727 were found in Schweizer et al. (2018) and have the same blue color as Nucleus 2. Nucleus 2 itself is embedded in such a blue tidal stream. This strengthens the notion that the progenitor host of Nucleus 2 was a gas-rich young galaxy that merged with NGC 7727 in the last 1-2 Gyr.

## 7. Conclusion

In this paper we present adaptive-optics narrow-field MUSE IFU kinematic data on the two nuclei of NGC 7727. Combining the kinematical data with HST photometry and Jeans Anisotropic models, we can constrain whether there is a SMBH present in both nuclei.

- We confirm a SMBH in the photometric center of NGC 7727 with a mass of  $M_{\text{BH}} = 1.54^{+0.18}_{-0.15} 10^8 M_{\odot}$ . This is a first SMBH mass measurement for this galaxy.
- We confirm a second SMBH in Nucleus 2, which is offset from the center of the galaxy by 500 pc in projected separation. This second BH has a mass of  $M_{\text{BH}} = 6.33^{+3.32}_{-1.40} \times 10^6 M_{\odot}$ .
- Our finding of a SMBH in Nucleus 2 that makes up 3.0% of the underlying nucleus mass, confirms that it used to be the center of the galaxy that merged with NGC 7727, and is a tidally stripped nuclear star cluster. Using the  $M_{\text{BH}}$ -Bulge relation the bulge mass of its progenitor galaxy can be estimated at  $M \sim 5 \times 10^9 M_{\odot}$ . The progenitor

galaxy of Nucleus 2 that merged with NGC 7727 is likely a gas-rich disk galaxy and assuming the disk had twice the mass of its bulge it was a minor merger with a 1:5 mass ratio.

- The emission line profile in Nucleus 2 are similar to Seyfert AGNs. These optical emission lines in combination with the X-ray source in its center provide strong independent evidence that the SMBH in Nucleus 2 is a low-luminosity AGN. Nucleus 1 falls in the area of LINER galaxies and due to the absence of a X-ray signal, the source of ionising radiation is not immediately obvious. It could be either caused by the SMBH or by hot post-AGB stars.
- This system constitutes the first dynamical detection of a dual SMBH system in which the stars in the sphere-of-influence have been resolved. In addition this system has a separation of only 500 pc making it the only known SMBH pair with a sub-kpc separation.
- Its distance of only 27.4 Mpc makes it the record holder for the nearest dual SMBH pair to us, with the next known dual SMBH being at a distance of 144 Mpc.
- The orbit of Nucleus 2 can be used to estimate a merging timescale of  $<1$  Gyr. This double SMBH pair is thus likely to merge in the future and produce a gravitational wave event. The mass ratio of this future SMBH merger will be 1:24, allowing us to make the first precise prediction for the mass ratio of a SMBH merger.

It was already suggested that SMBHs in stripped nuclei are so common that they increase the SMBH density in the local Universe by up to 30% (Voggel et al. 2019). The discovery of this offset SMBH is another confirmation that many SMBHs exist outside the centers of galaxies that have not been discovered yet. The search for surviving nuclear star clusters of accreted galaxies is currently the only manner to find these hidden SMBHs. The second nucleus of NGC 7727 is an even more interesting object due to its small separation to the main SMBH in the center of NGC 7727 and its advanced stage of merging. All five previous confirmed surviving nuclei with SMBHs were discovered further out in the halo of their host galaxy (at several kpc) and have thus much longer merging timescales.

This serendipitous discovery of a dual SMBH system studies offers a first view of a sub-kpc separation dual SMBH. This indicates that there are likely many more SMBHs as well as dual SMBH pairs in the local Universe that have been missed by surveys as both are not actively accreting. Targeting bright surviving nuclear star clusters in merged galaxies can facilitate the discovery of dual SMBHs at smaller separations in the Local Universe even when they are not luminous AGNs. This will allow much more detailed studies of these systems that then can serve as blueprints of how to find them more broadly in the distant Universe.

The dynamical detection of SMBHs is observationally limited by the current capabilities of adaptive optics IFU instruments such as MUSE, to resolve the sphere-of-influence of a given SMBH. With the upcoming next generation of 30-meter telescopes and advanced instruments such as HARMONI on the ELT the current distance limitations of this method will be pushed considerably. Whereas currently the typical MUSE AO PSF is  $\sim 0.1''$  with HARMONI this will typically be  $0.01\text{--}0.03''$  (Cunningham et al. 2008), enabling us to resolve the sphere of-

influence of SMBHs for many more galaxies than currently possible.

*Acknowledgements.* We would like to thank the referee for their comments that helped improve this paper. We would like to thank Jay Strader for his input on X-ray binaries. This research made use of Astropy,<sup>1</sup> a community-developed core Python package for Astronomy (Astropy Collaboration et al. 2013, 2018).

## References

- Afanasiev, A. V., Chilingarian, I. V., Mieske, S., et al. 2018, MNRAS, 477, 4856  
 Ahn, C. P., Seth, A. C., Cappellari, M., et al. 2018, ApJ, 858, 102  
 Ahn, C. P., Seth, A. C., den Brok, M., et al. 2017, ApJ, 839, 72  
 Astropy Collaboration, Price-Whelan, A. M., Sipőcz, B. M., et al. 2018, AJ, 156, 123  
 Astropy Collaboration, Robitaille, T. P., Tollerud, E. J., et al. 2013, A&A, 558, A33  
 Bacon, R., Accardo, M., Adjali, L., et al. 2010, in Society of Photo-Optical Instrumentation Engineers (SPIE) Conference Series, Vol. 7735, Society of Photo-Optical Instrumentation Engineers (SPIE) Conference Series, 8  
 Barber, C., Schaye, J., Bower, R. G., et al. 2016, MNRAS, 460, 1147  
 Behroozi, P. S., Wechsler, R. H., & Conroy, C. 2013, ApJ, 770, 57  
 Binney, J. & Tremaine, S. 1987, Galactic dynamics  
 Brassington, N. J., Ponman, T. J., & Read, A. M. 2007, MNRAS, 377, 1439  
 Brinchmann, J., Charlot, S., White, S. D. M., et al. 2004, MNRAS, 351, 1151  
 Calzetti, D., Armus, L., Bohlin, R. C., et al. 2000, ApJ, 533, 682  
 Cappellari, M. 2002, MNRAS, 333, 400  
 Cappellari, M. 2008, MNRAS, 390, 71  
 Cappellari, M. 2017, MNRAS, 466, 798  
 Cappellari, M. 2020, MNRAS, 494, 4819  
 Cappellari, M. & Copin, Y. 2003, MNRAS, 342, 345  
 Cappellari, M. & Emsellem, E. 2004, PASP, 116, 138  
 Cappellari, M., Neumayer, N., Reunanen, J., et al. 2009, MNRAS, 394, 660  
 Comerford, J. M., Pooley, D., Barrows, R. S., et al. 2015, ApJ, 806, 219  
 Comerford, J. M., Schluns, K., Greene, J. E., & Cool, R. J. 2013, ApJ, 777, 64  
 Cunningham, C., Evans, C., Monnet, G., & Le Louarn, M. 2008, in Society of Photo-Optical Instrumentation Engineers (SPIE) Conference Series, Vol. 6986, Extremely Large Telescopes: Which Wavelengths? Retirement Symposium for Arne Ardeberg, ed. T. E. Andersen, 69860K  
 De Rosa, A., Vignali, C., Bogdanović, T., et al. 2019, New A Rev., 86, 101525  
 Enoki, M., Inoue, K. T., Nagashima, M., & Sugiyama, N. 2004, ApJ, 615, 19  
 Fabrika, S. N., Atapin, K. E., Vinokurov, A. S., & Sholukhova, O. N. 2021, Astrophysical Bulletin, 76, 6  
 Falcón-Barroso, J., Sánchez-Blázquez, P., Vazdekis, A., et al. 2011, A&A, 532, A95  
 Feldmeier-Krause, A., Zhu, L., Neumayer, N., et al. 2017, MNRAS, 466, 4040  
 Fétick, R. J. L., Fusco, T., Neichel, B., et al. 2019, A&A, 628, A99  
 Forbes, J. C., Krumholz, M. R., Burkert, A., & Dekel, A. 2014, MNRAS, 438, 1552  
 Foreman-Mackey, D., Hogg, D. W., Lang, D., & Goodman, J. 2013, PASP, 125, 306  
 Fu, H., Yan, L., Myers, A. D., et al. 2012, ApJ, 745, 67  
 Girardi, L., Bressan, A., Bertelli, G., & Chiosi, C. 2000, A&AS, 141, 371  
 Greene, J. E. 2012, Nature Communications, 3, 1304  
 Greene, J. E. & Ho, L. C. 2007a, ApJ, 670, 92  
 Greene, J. E. & Ho, L. C. 2007b, ApJ, 667, 131  
 Ho, L. C. 2009, ApJ, 699, 626  
 Husemann, B., Worseck, G., Arrigoni Battaia, F., & Shanks, T. 2018, A&A, 610, L7  
 Ivanov, V. D., Cocato, L., Neeser, M. J., et al. 2019, A&A, 629, A100  
 Jiang, F., Dekel, A., Kneller, O., et al. 2019, MNRAS, 488, 4801  
 Kauffmann, G., Heckman, T. M., Tremonti, C., et al. 2003, MNRAS, 346, 1055  
 Kewley, L. J., Dopita, M. A., Sutherland, R. S., Heisler, C. A., & Trevena, J. 2001, ApJ, 556, 121  
 Kewley, L. J., Groves, B., Kauffmann, G., & Heckman, T. 2006, MNRAS, 372, 961  
 Kollatschny, W., Weilbacher, P. M., Ochmann, M. W., et al. 2020, A&A, 633, A79  
 Komossa, S., Burwitz, V., Hasinger, G., et al. 2003, ApJ, 582, L15  
 Kormendy, J. & Ho, L. C. 2013, ARA&A, 51, 511  
 Kosec, P., Brightman, M., Stern, D., et al. 2017, ApJ, 850, 168  
 Krist, J. E., Hook, R. N., & Stoehr, F. 2011, in Society of Photo-Optical Instrumentation Engineers (SPIE) Conference Series, Vol. 8127, Optical Modeling and Performance Predictions V, 81270J  
 Makino, J. & Funato, Y. 2004, ApJ, 602, 93

<sup>1</sup> <http://www.astropy.org>



- McGurk, R. C., Max, C. E., Medling, A. M., Shields, G. A., & Comerford, J. M. 2015, *ApJ*, 811, 14
- Moore, C. J., Cole, R. H., & Berry, C. P. L. 2015, *Classical and Quantum Gravity*, 32, 015014
- Nguyen, D. D., Seth, A. C., Neumayer, N., et al. 2019, *ApJ*, 872, 104
- Nguyen, D. D., Seth, A. C., Neumayer, N., et al. 2017, *ArXiv e-prints* [arXiv:1711.04314]
- Nguyen, D. D., Seth, A. C., Neumayer, N., et al. 2018, *ApJ*, 858, 118
- Nowak, N., Thomas, J., Erwin, P., et al. 2010, *MNRAS*, 403, 646
- O’Leary, R. M., Kocsis, B., & Loeb, A. 2009, *MNRAS*, 395, 2127
- Pacucci, F., Loeb, A., Mezcua, M., & Martín-Navarro, I. 2018, *ApJ*, 864, L6
- Peng, E. W., Ford, H. C., & Freeman, K. C. 2004, *ApJS*, 150, 367
- Rubinur, K., Das, M., Kharb, P., & Honey, M. 2017, *MNRAS*, 465, 4772
- Saglia, R. P., Opitsch, M., Erwin, P., et al. 2016, *ApJ*, 818, 47
- Schulze, A., Bongiorno, A., Gavignaud, I., et al. 2015, *MNRAS*, 447, 2085
- Schweizer, F., Seitzer, P., Whitmore, B. C., Kelson, D. D., & Villanueva, E. V. 2018, *ApJ*, 853, 54
- Seth, A. C., van den Bosch, R., Mieske, S., et al. 2014, *Nature*, 513, 398
- Soto, K. T., Lilly, S. J., Bacon, R., Richard, J., & Conseil, S. 2016, *MNRAS*, 458, 3210
- Stemo, A., Comerford, J. M., Barrows, R. S., et al. 2020, *arXiv e-prints*, arXiv:2011.10051
- Tremmel, M., Governato, F., Volonteri, M., Pontzen, A., & Quinn, T. R. 2018, *ApJ*, 857, L22
- Vazdekis, A., Sánchez-Blázquez, P., Falcón-Barroso, J., et al. 2010, *MNRAS*, 404, 1639
- Voggel, K. T., Seth, A. C., Baumgardt, H., et al. 2019, *ApJ*, 871, 159
- Voggel, K. T., Seth, A. C., Neumayer, N., et al. 2018, *ApJ*, 858, 20
- Volonteri, M. 2010, *A&A Rev.*, 18, 279
- Volonteri, M., Dubois, Y., Pichon, C., & Devriendt, J. 2016, *MNRAS*, 460, 2979
- Volonteri, M., Haardt, F., & Gültekin, K. 2008, *MNRAS*, 384, 1387
- Volonteri, M., Haardt, F., & Madau, P. 2003, *ApJ*, 582, 559
- Weilbacher, P. M., Palsa, R., Streicher, O., et al. 2020, *A&A*, arXiv:2006.08638
- Woo, J.-H., Cho, H., Husemann, B., et al. 2014, *MNRAS*, 437, 32
- Xiao, T., Barth, A. J., Greene, J. E., et al. 2011, *ApJ*, 739, 28
- Zocchi, A., Gieles, M., & Hénault-Brunet, V. 2017, *MNRAS*, 468, 4429

**Table A.1.** The luminosity model of Nucleus 1 that is provided to the JAM code.

Luminosity	$\sigma$	q	Position Angle
$[L_{\odot}pc^{-2}]$	[arcsec]		[Degrees]
20953.19	0.005	0.69	83.43
31928.07	0.016	0.69	83.43
37778.16	0.045	0.69	83.43
32921.86	0.103	0.69	83.43
19752.75	0.205	0.69	83.43
7688.43	0.366	0.69	83.43
1847.96	0.598	0.69	83.43
257.51	0.923	0.69	83.43
14.34	1.425	0.69	83.43
1308.94	0.347	0.69	-79.89
2849.06	1.289	0.69	-79.89
3448.48	3.040	0.69	-79.89
2033.29	5.512	0.69	-79.89
507.08	8.538	0.69	-79.89
36.72	12.332	0.69	-79.89

**Table A.2.** The luminosity model of Nucleus 2 that is provided to the JAM code.

Luminosity	$\sigma$	q	Position Angle
$[L_{\odot}pc^{-2}]$	[arcsec]		[Degrees]
65426.46	0.002	0.62	70.51
87892.47	0.007	0.62	70.51
96648.39	0.019	0.62	70.51
83412.83	0.045	0.62	70.51
53812.23	0.094	0.62	70.51
24566.65	0.178	0.62	70.51
7585.31	0.310	0.62	70.51
1539.61	0.505	0.62	70.51
194.19	0.787	0.62	70.51
10.58	1.243	0.62	70.51

**Appendix A: The Luminosity Models**