

Sloan Sinks – Designing with Hygiene, Quality and Customization

Morgan Butts – Sr. Product Line Manager

Gina Wilkins – Strategic Account Manager

Presenters



Gina Wilkins
Strategic Account Manager
Los Angeles, CA



Morgan Butts
Sr. Product Line Manager
Franklin Park, IL

Learning Objectives

This webinar is designed to:

- Review best practices of hygienic sink design
- Reveal sink options for every project budget
- Discuss ways to pair restroom components with the sink, to enhancing the overall design

You will learn:

- How to make the best hygienic selections for commercial restrooms
- How to match the right sink with your project budget



Sink Design and Hygiene are Linked



Design Facilitates “Standard Precaution” Best Practices

- Supports proper hand hygiene
- Incorporates “touch-free” interaction
- Minimizes stagnant water supplies
- Minimizes potential injury or “slip and fall” risk
- Use is intuitive and enjoyable

Design Facilitates Proper Cleaning

- Minimizes hard-to-clean surfaces
- Utilizes resilient surface materials
- Does not require complex cleaning procedures
- Minimizes cleaning time
- Minimizes cleaning labor

Design Facilitates Proper Maintenance

- Materials support ease-of-repair
- Capable of quick on-site seamless repair
- Ease of access to key components
- Standardized components
- Common power supplies with back-up if required

COVID-19 Cleaning Guidance

For community facilities (schools, daycare centers, and business settings) that are visited by the general public

How to clean and disinfect hard (non-porous) surfaces:

- If surfaces are dirty, they should be cleaned using a detergent or soap and water prior to disinfection.
- For disinfection, most common EPA-registered household disinfectants should be effective.
 - A list of products that are EPA-approved for use against the virus that causes COVID-19 is available. Follow the manufacturer's instructions for all cleaning and disinfection products for concentration, application method and contact time, etc.



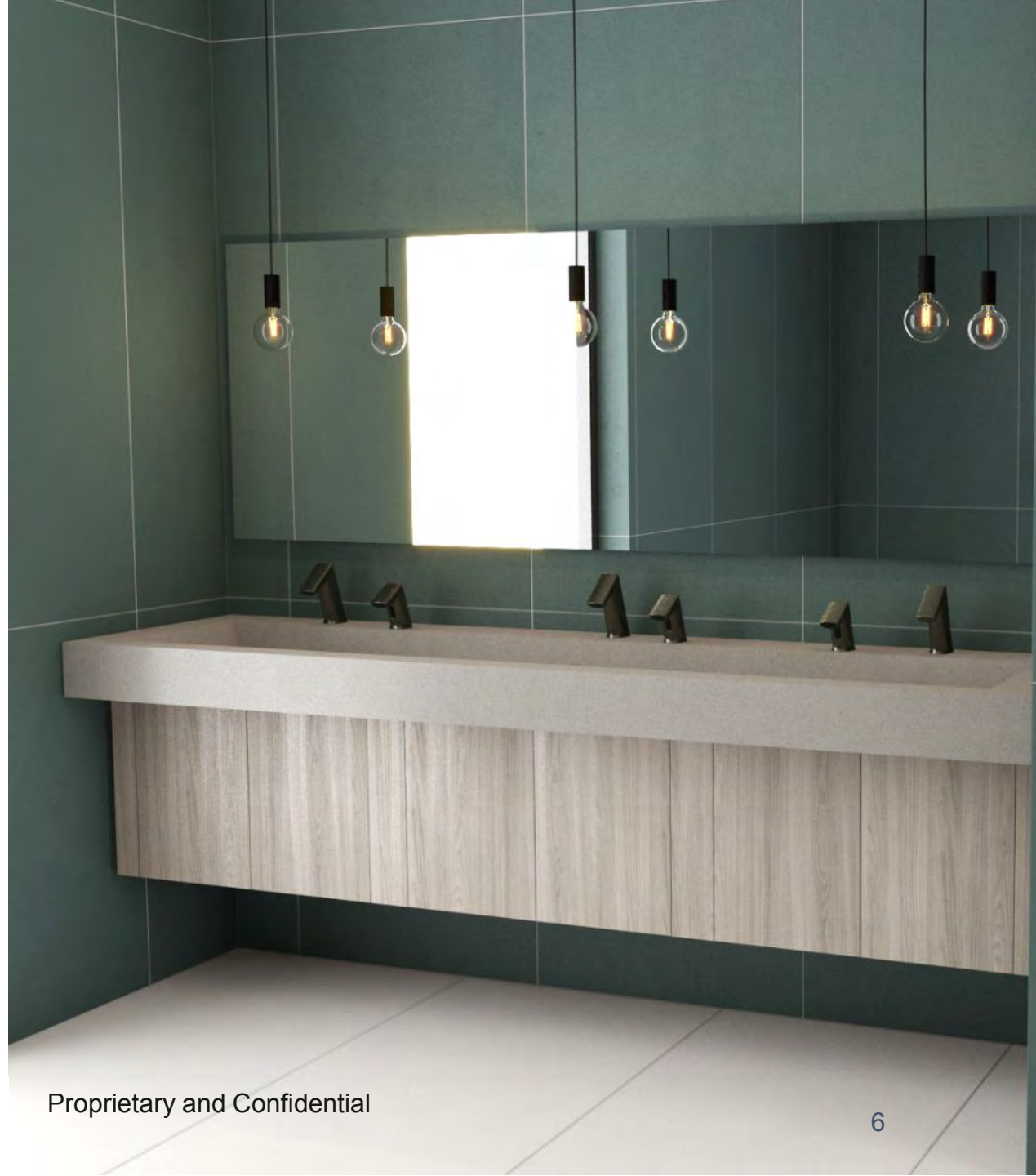
**CENTERS FOR DISEASE
CONTROL AND PREVENTION**

[Link to CDC
Cleaning Guidelines](#)

[Link to approved
Cleaning Products](#)

Best Sink Materials for Optimal Hygiene

- ✓ Vitreous china
- ✓ Solid surface
- ✓ Quartz
- ✓ Stainless
- × Natural stone



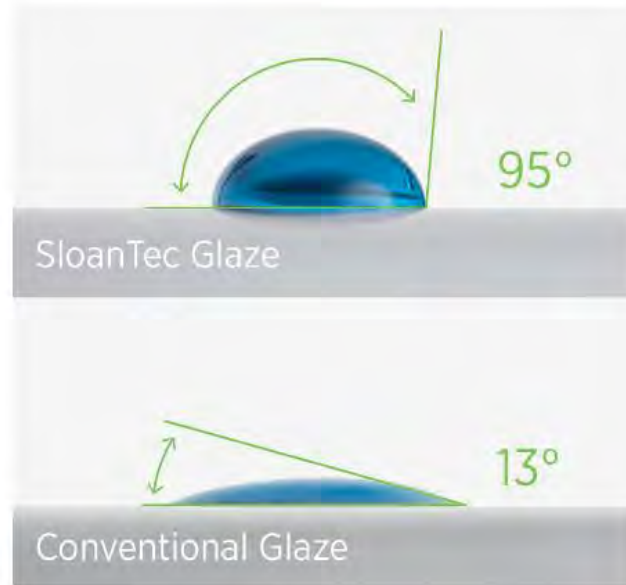
Best Sink Materials for Optimal Hygiene

Vitreous China

- Non-porous
- Easy to clean
- Resistant to corrosion and discoloration
- Durable but can be chipped or cracked if struck by heavy object



SloanTec Glaze



We've got the angle

Hydrophobic properties can be measured by the contact angle of a droplet of water. In laboratory tests, SloanTec glaze achieved angles up to seven times greater than conventional glazes, and testing confirmed that surfaces with higher contact angles are far easier to clean — and keep clean.



Permanent protection

SloanTec glaze was engineered to stand up to the harsh conditions in commercial restrooms, and independent laboratory testing proved it can.

Link: [SloanTec Glaze](#)

Best Sink Materials for Optimal Hygiene

Solid Surface

- Non-porous
- Repairable
- Resistant to:
 - Staining
 - Scratching
 - Heat
- Easy to clean
- Seamless appearance



Best Sink Materials for Optimal Hygiene

Quartz

- Engineered stone
- Luxurious aesthetic
- Non-porous
- Resistant to:
 - Staining
 - Scratching
 - Heat
- Not repairable
- Visible seams



Best Sink Materials for Optimal Hygiene

Natural Stone

- Marble, granite, limestone, etc.
- Porous
- Professional sealant recommend every 1-5 years
- Risk of discoloration with certain cleaners
- Frequent non-abrasive/non-acid-based cleaning recommended



A modern public restroom with a long, light-colored concrete sink and a large mirror above it. The sink has several faucets. To the right, there are several stalls with dark blue doors and white toilets. The walls are made of light-colored square tiles.

Best Sink System Components for Optimal Hygiene

Best Sink System Components for Optimal Hygiene

- 100% touch free
- Closed soap system
- Hand dryers vs. paper towels
- HEPA filters



Best Sink System Components for Optimal Hygiene

Touch Free Products

- Ease of use
- Accessible for all users
- Reduce the spread of germs
- Keeps the restroom clean
- Various finishes available
- Matching sets



Best Sink System Components for Optimal Hygiene

Touch Free Products

- Ease of use
- Accessible for all users
- Reduce the spread of germs
- Keeps the restroom clean
- Various finishes available
- Matching sets



Best Sink System Components for Optimal Hygiene

Touch Free Products

- Ease of use
- Accessible for all users
- Reduce the spread of germs
- Keeps the restroom clean
- Various finishes available
- Matching sets



Best Sink System Components for Optimal Hygiene

Soap System Options

- Open systems – Top fill (pour)
- Closed systems – New bottle

CDC, WHO, and Health Canada have issued guidelines against refillable, bulk soap dispensers (2,5,6).



2. Health Canada Guidance Document for Human-Use Antiseptic Drugs. December 2009. pg 32.
3. Chattman M, Maxwell S, Gerba C. 2011. Occurrence of heterotrophic and coliform bacteria in liquid hand soaps from bulk refillable dispensers in public facilities. J Environ Health. 73(7):26-29.
4. Zapka C, Campbell E, Maxwell S, Gerba C, Dolan M, Arbogast J, Macinga D. 2011. Bacterial hand contamination and transfer after use of contaminated bulk-soap-refillable dispensers. Appl Environ Microbiol. 77(9):2898-2904.
5. Centers for Disease Control and Prevention. Guideline for Hand Hygiene in Health-Care Settings: Recommendations of the Healthcare Infection Control Practices Advisory Committee and the HICPAC/SHEA/APIC/IDSA Hand Hygiene Task Force. Morbidity and Mortality Weekly Report. October 25, 2002 / Vol. 51 / No. RR-16. Accessed at <http://www.cdc.gov/handhygiene/Guidelines.html> on May 18, 2010.
6. World Health Organization (2009) WHO Guidelines on Hand Hygiene in Health Care. Geneva, Switzerland: World Health Organization Press.

Best Sink System Components for Optimal Hygiene

Soap System Options

- Open systems – Top fill (pour)
- Closed systems – New bottle

CDC, WHO, and Health Canada have issued guidelines against refillable, bulk soap dispensers (2,5,6).



2. Health Canada Guidance Document for Human-Use Antiseptic Drugs. December 2009. pg 32.
3. Chattman M, Maxwell S, Gerba C. 2011. Occurrence of heterotrophic and coliform bacteria in liquid hand soaps from bulk refillable dispensers in public facilities. J Environ Health. 73(7):26-29.
4. Zapka C, Campbell E, Maxwell S, Gerba C, Dolan M, Arbogast J, Macinga D. 2011. Bacterial hand contamination and transfer after use of contaminated bulk-soap-refillable dispensers. Appl Environ Microbiol. 77(9):2898-2904.
5. Centers for Disease Control and Prevention. Guideline for Hand Hygiene in Health-Care Settings: Recommendations of the Healthcare Infection Control Practices Advisory Committee and the HICPAC/SHEA/APIC/IDSA Hand Hygiene Task Force. Morbidity and Mortality Weekly Report. October 25, 2002 / Vol. 51 / No. RR-16. Accessed at <http://www.cdc.gov/handhygiene/Guidelines.html> on May 18, 2010.
6. World Health Organization (2009) WHO Guidelines on Hand Hygiene in Health Care. Geneva, Switzerland: World Health Organization Press.

Best Sink System Components for Optimal Hygiene

Soap System Options

- Open systems – Top fill (pour)
- Closed systems – New bottle

CDC, WHO, and Health Canada have issued guidelines against refillable, bulk soap dispensers (2,5,6).

2. Health Canada Guidance Document for Human-Use Antiseptic Drugs. December 2009. pg 32.
3. Chattman M, Maxwell S, Gerba C. 2011. Occurrence of heterotrophic and coliform bacteria in liquid hand soaps from bulk refillable dispensers in public facilities. J Environ Health. 73(7):26-29.
4. Zapka C, Campbell E, Maxwell S, Gerba C, Dolan M, Arbogast J, Macinga D. 2011. Bacterial hand contamination and transfer after use of contaminated bulk-soap-refillable dispensers. Appl Environ Microbiol. 77(9):2898-2904.
5. Centers for Disease Control and Prevention. Guideline for Hand Hygiene in Health-Care Settings: Recommendations of the Healthcare Infection Control Practices Advisory Committee and the HICPAC/SHEA/APIC/IDSA Hand Hygiene Task Force. Morbidity and Mortality Weekly Report. October 25, 2002 / Vol. 51 / No. RR-16. Accessed at <http://www.cdc.gov/handhygiene/Guidelines.html> on May 18, 2010.
6. World Health Organization (2009) WHO Guidelines on Hand Hygiene in Health Care. Geneva, Switzerland: World Health Organization Press.

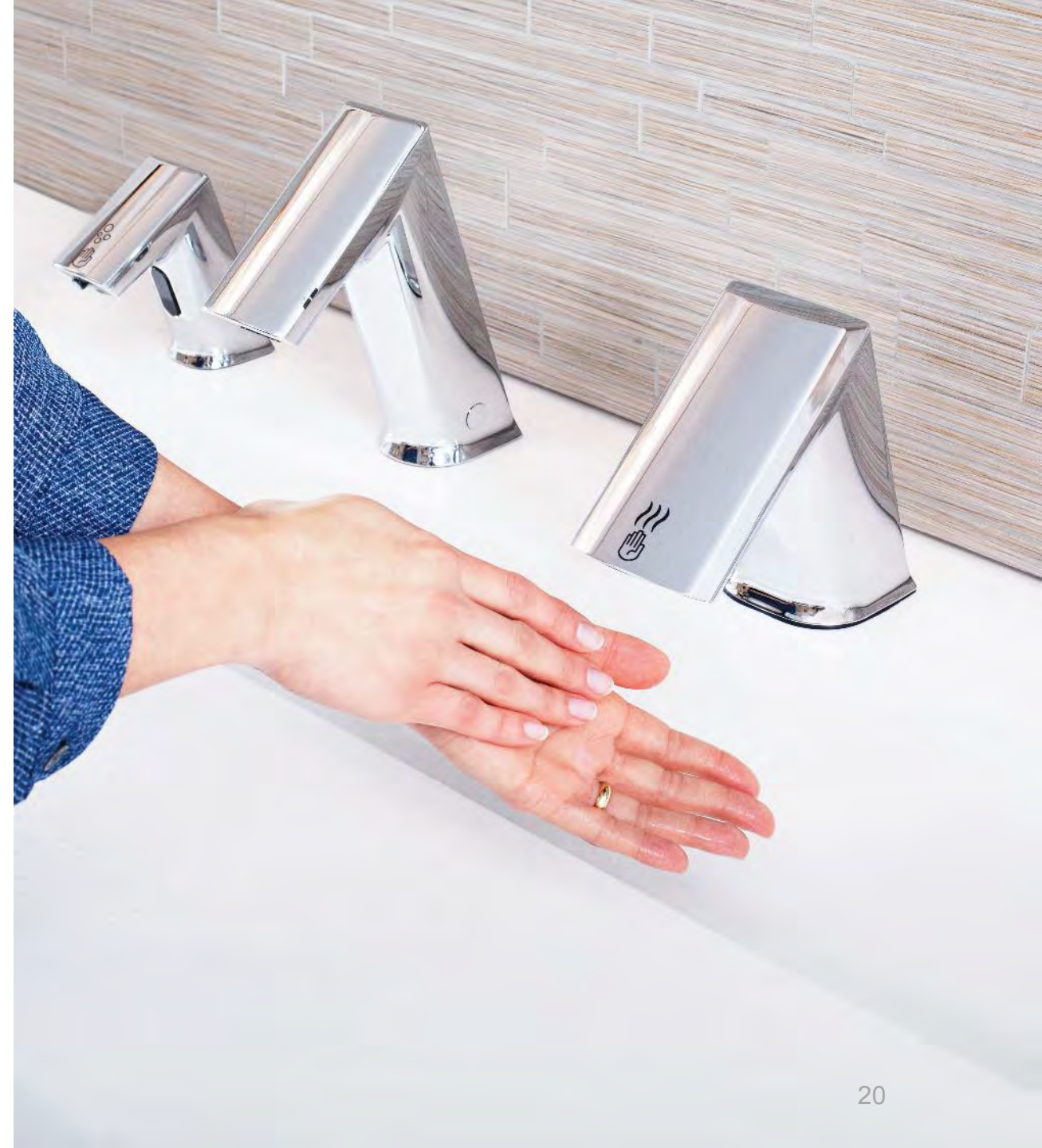


Best Sink System Components for Optimal Hygiene

Hand Dryers vs. Paper Towels

“There are no differences in the efficiencies of removing bacteria from washed hands when hands are dried using paper towels, cloth towels, warm forced air or spontaneous evaporation.”

– Mayo Clinic Proceedings, Vol. 87, Issue 8

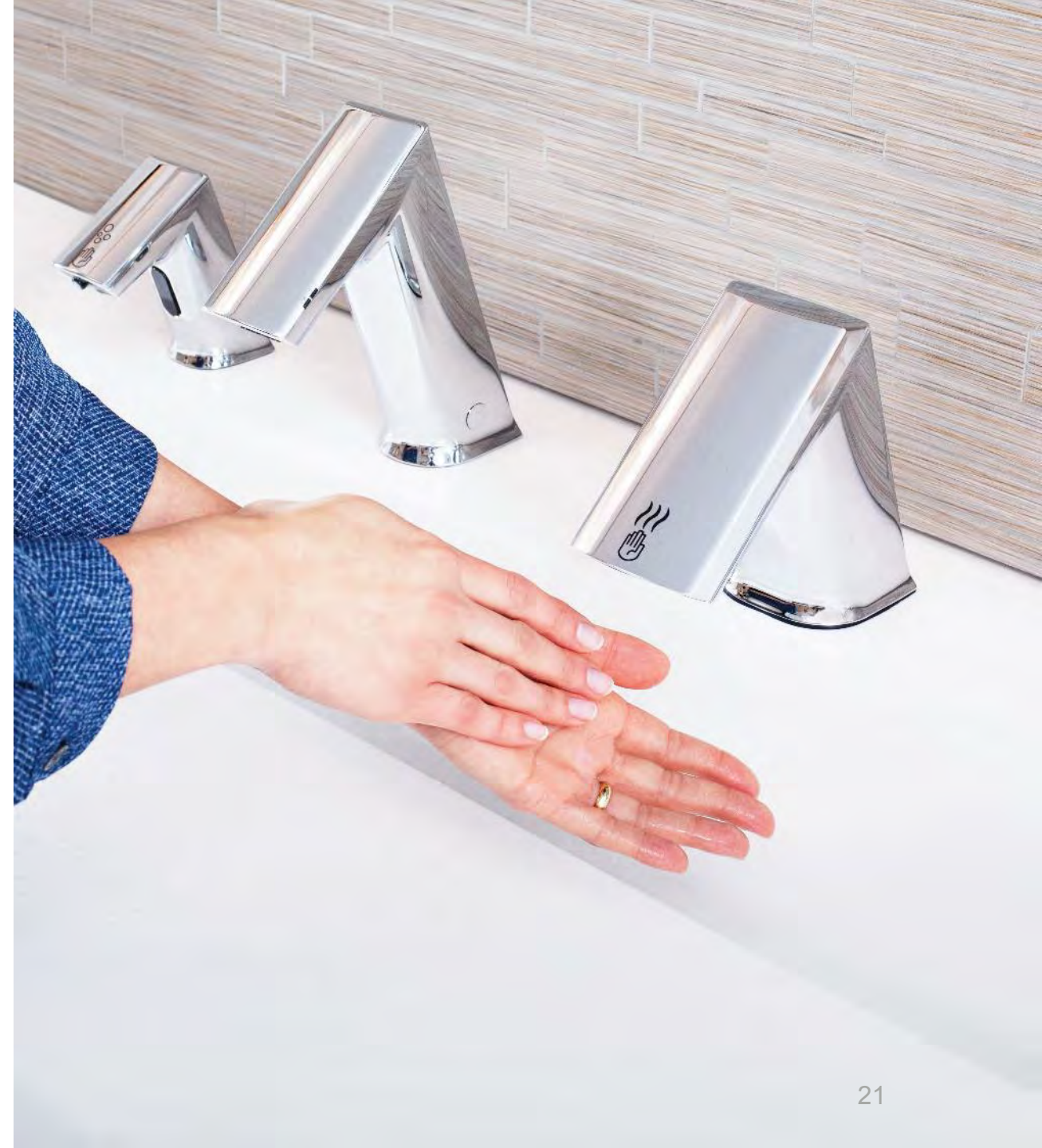


Best Sink System Components for Optimal Hygiene

Hand Dryers vs. Paper Towels

“Researchers at Laval University in Quebec City evaluated bacterial contaminants found on unused paper towels and found 17 species of bacteria on the paper towels with the most common being *Bacillus*, which causes food poisoning.”

– American Journal of Infection Control, Vol. 40



Best Sink System Components for Optimal Hygiene

HEPA Filters

- Increase effectiveness of hand washing in touch-free hand dryers
- Remove 99.97% of particles with a diameter of 0.3 microns or larger



A modern public restroom with grey subway tile walls, a long white sink with wooden cabinets, round mirrors, and spherical pendant lights. The background shows a row of wooden stalls and white urinals.

Sink Design Options for Every Project Budget

Sink Design Options for Every Project Budget

“The Good”

- K-12 School, Class B/C Office, Small Restaurants, Healthcare, Retail

“The Better”

- Class B/C Office, Higher Ed, High-traffic Restaurants

“The Best”

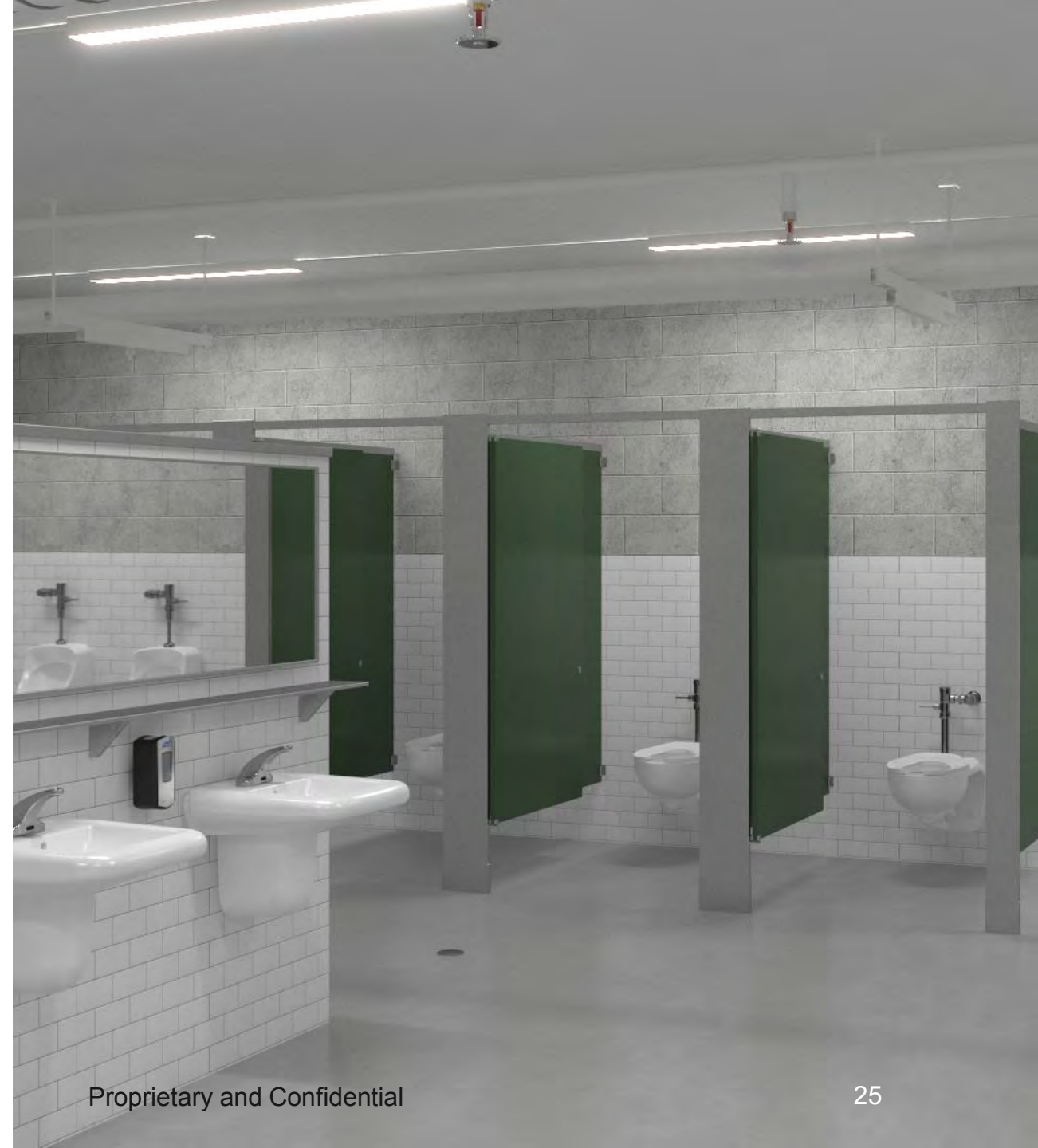
- Airport, High-end Mall, Upscale Grocery, Class A Office, High-end Restaurants, Hospitality



“Good” Sink Design Options

Vitreous China

- Limited design options
- Vandal resistant designs
- SloanTec Glaze



“Good” Sink Design Options

Molded Solid Surface Sinks

- Updated styles available
- Standard sizes (30”, 60”, 90”, 120”)
- Faster lead times than fabricated sinks
- Lower cost than fabricated sinks
- Limited mounting types
- Can upgrade the sink with faucets and soap dispensers



[Find your favorite SloanStone design here](#)

“Good” Sink Design Options

Molded Solid Surface Sinks

- Updated styles available
- Standard sizes (30”, 60”, 90”, 120”)
- Faster lead times than fabricated sinks
- Lower cost than fabricated sinks
- Limited mounting types
- Can upgrade the sink with faucets and soap dispensers



“Good” Sink Design Options

Molded Solid Surface Sinks

- Updated styles available
- **Standard sizes (30”, 60”, 90”,120”)**
- Faster lead times than fabricated sinks
- Lower cost than fabricated sinks
- Limited mounting types
- Can upgrade the sink with faucets and soap dispensers



“Good” Sink Design Options

Molded Solid Surface Sinks

- Updated styles available
- Standard sizes (30”, 60”, 90”, 120”)
- **Faster lead times than fabricated sinks**
- **Lower cost than fabricated sinks**
- Limited mounting types
- Can upgrade the sink with faucets and soap dispensers



“Good” Sink Design Options

Molded Solid Surface Sinks

- Updated styles available
- Standard sizes (30”, 60”, 90”, 120”)
- Faster lead times than fabricated sinks
- Lower cost than fabricated sinks
- **Limited mounting types**
- Can upgrade the sink with faucets and soap dispensers

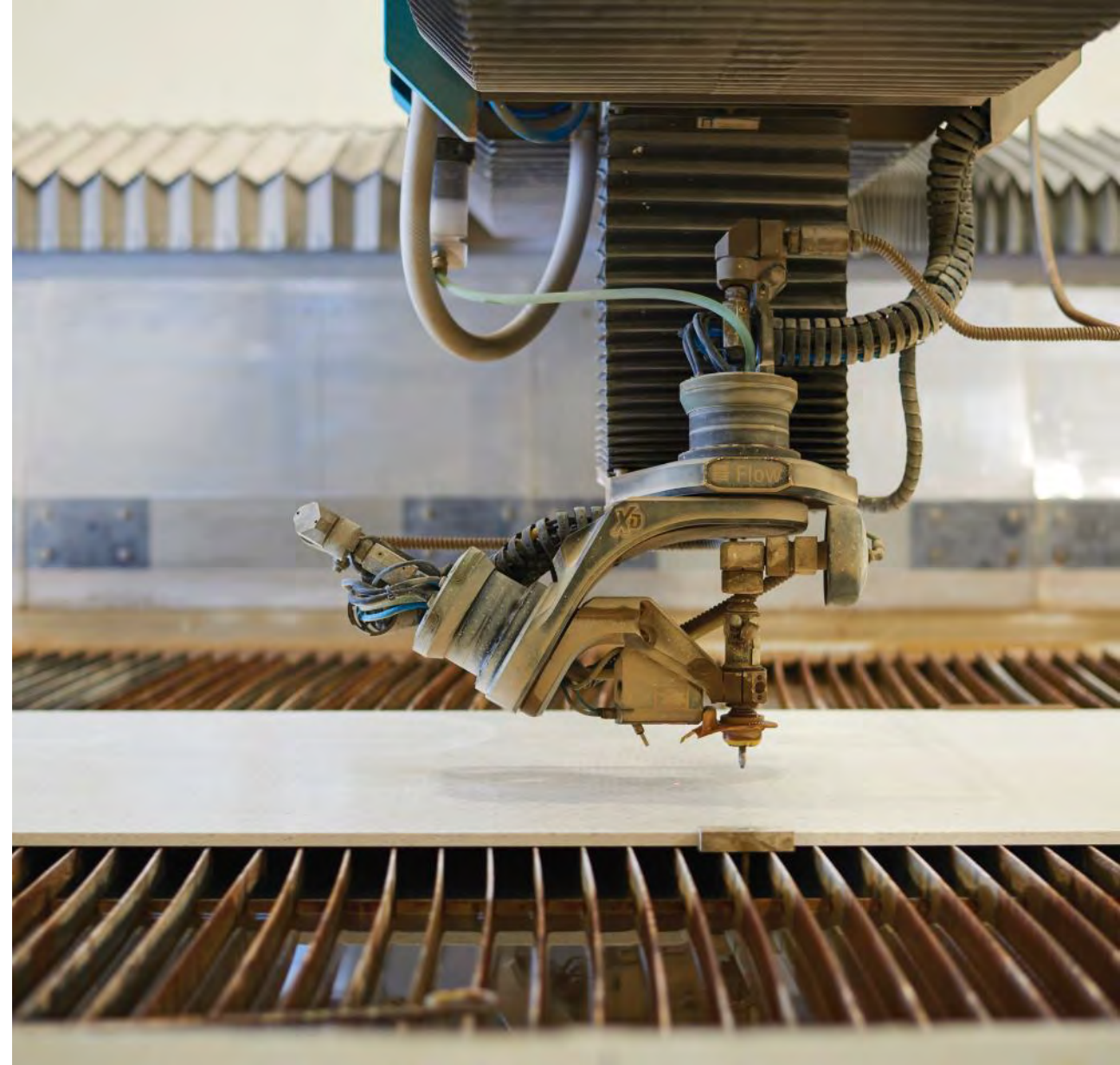




“Better” and “Best” Custom Fabricated Sinks

Fabricated Sink Manufacturing

- Manufactured in USA
- Hand crafted for each project
- 5-axis water jet
- **Ability to customize to your exact design needs**
- Precise design and finishing
- High quality manufacturing processes
- Working toward zero landfill and carbon neutral



Fabricated Sink Manufacturing

- Manufactured in USA
- Hand crafted for each project
- 5-axis water jet
- Ability to customize to your exact design needs
- Precise design and finishing
- **High quality manufacturing processes**
- Working toward zero landfill and carbon neutral



Fabricated Sink Manufacturing

Stone and Steel Design Center

- Chief Creative Officer
- Design/innovation experts
- Showroom restrooms
- Faucet wall
- Sink material samples
- Prototyping capabilities

Contact for Design Session:
DesignTeam@stoneandsteel.com



Fabricated Sink Manufacturing

Stone and Steel Design Center

- Chief Creative Officer
- Design/innovation experts
- Showroom restrooms
- Faucet wall
- Sink material samples
- Prototyping capabilities

Contact for Design Session:
DesignTeam@stoneandsteel.com



“Better” Sink Design Options

Fabricated Corian Sinks

- Beautiful aesthetic
- Mid-range pricing
- Customizable design
- Dimension range
- Over 100 color options
- Durable and repairable
- Additional mounting types
- Upgrade with finishes



[DSCT-81000](#)



[DSG-81000](#)



[DSOF-81000](#)



[DSVR-81000](#)



[DSWD-81000](#)

“Better” Sink Design Options

Fabricated Corian Sinks

- Beautiful aesthetic
- Mid-range pricing
- **Customizable design**
- **Dimension range**
- Over 100 color options
- Durable and repairable
- Additional mounting types
- Upgrade with finishes



“Better” Sink Design Options

Fabricated Corian Sinks

- Beautiful aesthetic
- Mid-range pricing
- Customizable design
- Dimension range
- **Over 100 color options**
- Durable and repairable
- Additional mounting types
- Upgrade with finishes



“Better” Sink Design Options

Fabricated Corian Sinks

- Beautiful aesthetic
- Mid-range pricing
- Customizable design
- Dimension range
- **Over 100 color options**
- Durable and repairable
- Additional mounting types
- Upgrade with finishes



[DSG-81000](#) with Extended
Counter and [EBF-615](#), [ESD-600](#)



Proprietary and Confidential

“Better” Sink Design Options

Fabricated Corian Sinks

- Beautiful aesthetic
- Mid-range pricing
- Customizable design
- Dimension range
- Over 100 color options
- **Durable and repairable**
- **Additional mounting types**
- Upgrade with finishes



“Better” Sink Design Options

Fabricated Corian Sinks

- Beautiful aesthetic
- Mid-range pricing
- Customizable design
- Dimension range
- Over 100 color options
- Durable and repairable
- Additional mounting types
- **Upgrade with finishes**



“Better” Sink Design Options

Fabricated Corian Sinks

- Beautiful aesthetic
- Mid-range pricing
- Customizable design
- Dimension range
- Over 100 color options
- Durable and repairable
- Additional mounting types
- Upgrade with finishes



“Better” Sink Design Options

Fabricated Corian Sinks

- Beautiful aesthetic
- Mid-range pricing
- Customizable design
- Dimension range
- Over 100 color options
- Durable and repairable
- Additional mounting types
- Upgrade with finishes



“Better” Sink Design Options

Fabricated Corian Sinks

- Beautiful aesthetic
- Mid-range pricing
- Customizable design
- Dimension range
- Over 100 color options
- Durable and repairable
- Additional mounting types
- Upgrade with finishes





“Best” Sink Design Options

AER-DEC

[View the AER-DEC Video](#)

“Best” Sink Design Options

AER-DEC Integrated Sink

- All three steps without you taking any
- Minimize water on the floor
- Reduced risk of slipping and falling
- Less movement around the restroom
- All components are touch-free and integrated
- Unlimited customization



“Best” Sink Design Options

AER-DEC Integrated Sink

- All three steps without you taking any
- Minimize water on the floor
- Reduced risk of slipping and falling
- Less movement around the restroom
- All components are touch-free and integrated
- Unlimited customization



“Best” Sink Design Options

AER-DEC Integrated Sink

- All three steps without you taking any
- Minimize water on the floor
- Reduced risk of slipping and falling
- Less movement around the restroom
- All components are touch-free and integrated
- Unlimited customization



“Best” Sink Design Options

AER-DEC Integrated Sink

- All three steps without you taking any
- Minimize water on the floor
- Reduced risk of slipping and falling
- Less movement around the restroom
- All components are touch-free and integrated
- Unlimited customization



“Best” Sink Design Options

AER-DEC Integrated Sink

- All three steps without you taking any
- Minimize water on the floor
- Reduced risk of slipping and falling
- Less movement around the restroom
- All components are touch-free and integrated
- Unlimited customization



“Best” Sink Design Options

AER-DEC Integrated Sink

- All three steps without you taking any
- Minimize water on the floor
- Reduced risk of slipping and falling
- Less movement around the restroom
- All components are touch-free and integrated
- Unlimited customization



“Best” Sink Design Options

AER-DEC Integrated Sink

- All three steps without you taking any
- Minimize water on the floor
- Reduced risk of slipping and falling
- Less movement around the restroom
- All components are touch-free and integrated
- Unlimited customization



“Best” Sink Design Options

AER-DEC Integrated Sink

- All three steps without you taking any
- Minimize water on the floor
- Reduced risk of slipping and falling
- Less movement around the restroom
- All components are touch-free and integrated
- Unlimited customization



“Best” Sink Design Options

AER-DEC Integrated Sink

- All three steps without you taking any
- Minimize water on the floor
- Reduced risk of slipping and falling
- Less movement around the restroom
- All components are touch-free and integrated
- Unlimited customization



“Best” Sink Design Options

AER-DEC Integrated Sink

- All three steps without you taking any
- Minimize water on the floor
- Reduced risk of slipping and falling
- Less movement around the restroom
- All components are touch-free and integrated
- Unlimited customization



“Best” Sink Design Options

AER-DEC Integrated Sink

- All three steps without you taking any
- Minimize water on the floor
- Reduced risk of slipping and falling
- Less movement around the restroom
- All components are touch-free and integrated
- Unlimited customization



“Best” Sink Design Options

AER-DEC Integrated Sink

- All three steps without you taking any
- Minimize water on the floor
- Reduced risk of slipping and falling
- Less movement around the restroom
- All components are touch-free and integrated
- Unlimited customization



“Best” Sink Design Options

AER-DEC Integrated Sink

- All three steps without you taking any
- Minimize water on the floor
- Reduced risk of slipping and falling
- Less movement around the restroom
- All components are touch-free and integrated
- Unlimited customization



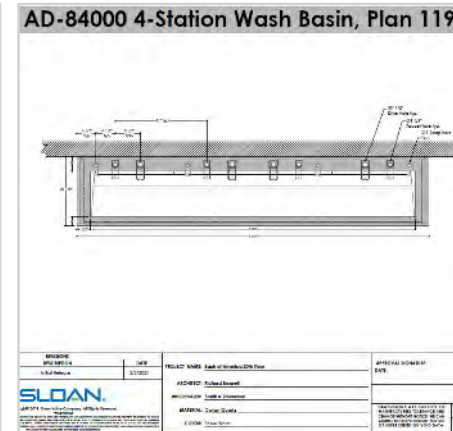
Design With Us



Reach out to your Sloan representative

[illegible]

Complete an Architectural Worksheet



Review your drawing

[illegible]

Receive your quote

Design With Us



Place your order



**Request Sloan
installation
supervision**



**Post installation
support**



**Enjoy your beautiful
restroom**

Resources Available

Visit our website

- Spec sheets
- BIM models
- CAD drawings
- Case studies
- Product videos
- Installation instructions

Contact us

- Architect/Interior Designer –
 - See Next Page
- Engineer/Contractor/Wholesaler
 - [Find your Local Sales Rep](#)

Strategic Account Managers

Name	Region	Email
Gina Wilkins	West Coast	Gina.Wilkins@sloan.com
Kim Darke	Mid-West	Kim.Darke@sloan.com
Shelly Sturgis	New York	Shelly.Sturgis@sloan.com
Kirk Gruben	South Central – Dallas	Kirk.Gruben@sloan.com
Mary Phelps	South Central - Houston	Mary.Phelps@sloan.com



Thank You - Questions?

Training Comments, Questions, or Suggestions?

Andrew Warnes
Manager – Technical Training
Sloan Valve Company
10500 Seymour Avenue
Franklin Park, IL USA 60131-1259

Office: +1-800-982-5839
E-mail: training@sloan.com
Web: www.sloan.com