

SMART Board® E70

SETUP AND MAINTENANCE GUIDE

FOR MODEL SPNL-4070

SMART®

Product registration

If you register your SMART product, we'll notify you of new features and software upgrades.

Register online at smarttech.com/registration.

Keep the following information available in case you need to contact SMART Support.

Serial number:

Date of purchase:

Licenses

The terms HDMI and HDMI High-Definition Multimedia Interface, and the HDMI logo are trademarks or registered trademarks of HDMI Licensing LLC in the United States and other countries

FCC warning

This equipment has been tested and found to comply with the limits for a Class A digital device, pursuant to Part 15 of the FCC Rules. These limits are designed to provide reasonable protection against harmful interference when the equipment is operated in a commercial environment. This equipment generates, uses and can radiate radio frequency energy and, if not installed and used in accordance with the manufacturer's instructions, may cause harmful interference to radio communications. Operation of this equipment in a residential area is likely to cause harmful interference in which case the user will be required to correct the interference at his own expense.

Trademark notice

SMART Board, SMART Notebook, smarttech, the SMART logo and all SMART taglines are trademarks or registered trademarks of SMART Technologies ULC in the U.S. and/or other countries. Windows is either a registered trademark or a trademark of Microsoft Corporation in the U.S. and/or other countries. All other third-party product and company names may be trademarks of their respective owners.

Copyright notice

© 2013–2016 SMART Technologies ULC. All rights reserved. No part of this publication may be reproduced, transmitted, transcribed, stored in a retrieval system or translated into any language in any form by any means without the prior written consent of SMART Technologies ULC. Information in this manual is subject to change without notice and does not represent a commitment on the part of SMART.

This product and/or use thereof covered by one or more of the following U.S. patents.

www.smarttech.com/patents

10/2016

Important information



WARNING

- Failure to follow the installation instructions shipped with the SMART product could result in personal injury and product damage which may not be covered by the warranty.
- Do not open or disassemble the SMART product. You risk electrical shock from the high voltage inside the casing. Opening the casing also voids the warranty.
- Do not stand (or allow children to stand) on a chair to touch the surface of the SMART product. Rather, mount the product at the appropriate height.
- To reduce the risk of fire or electric shock, do not expose the SMART product to rain or moisture.
- If the SMART product requires replacement parts, make sure the service technician uses replacement parts specified by SMART Technologies or parts with the same characteristics as the original.
- Ensure that any cables that cross the floor to the SMART product are properly bundled and marked to avoid a trip hazard.
- Use only extension cords and outlets that can fully accommodate this product's polarized plug.
- Use the power cable provided with this product. If a power cable is not supplied with this product, please contact your supplier. Use only power cables that match the AC voltage of the power outlet and that comply with your country's safety standards.
- If the glass is broken, do not touch the liquid crystal. To prevent injury, handle glass fragments with care when disposing of them.
- Use only VESA®-approved mounting hardware.
- Do not insert objects inside the cabinet ventilation holes, because they could touch dangerous voltage points and cause electric shock, fire or product damage which may not be covered by the warranty.
- Do not place any heavy objects on the power cable. Damage to the cable could cause shock, fire or product damage which may not be covered by the warranty.

IMPORTANT INFORMATION

- Disconnect all the interactive flat panel's power cables from the wall outlet and seek assistance from qualified service personnel if any of the following occurs:
 - The power cable or plug is damaged
 - Liquid is spilled into the interactive flat panel
 - Objects fall into the interactive flat panel
 - The interactive flat panel is dropped
 - Structural damage, such as cracking, occurs
 - The interactive flat panel behaves unexpectedly when you follow operating instructions

Contents

Important information	i
Chapter 1: About your interactive flat panel	1
Feature highlights	1
Included accessories	2
Chapter 2: Mounting your interactive flat panel	3
Choosing a mounting location	4
Choosing a mounting height	4
Cable management	4
Connecting your interactive flat panel	5
Configuring your computer's screen resolution	6
Chapter 3: Using your interactive flat panel	9
Using the remote control	9
Using the control panel	12
On-screen display menu	13
Multi Media mode	14
Cleaning the interactive flat panel	16
Chapter 4: Troubleshooting your interactive flat panel	19
Locating the serial number	19
Resolving common touch control and resolution issues with Windows and Mac operating systems	20
Resolving image issues	22
Appendix A: Configuring and calibrating your SMART Board E70 interactive flat panel with Windows	23
Configuring your touch and display settings for the SMART Board E70	23
Appendix B: Calibrating your interactive flat panel with Mac OS X	31
Calibrating your SMART Board E70	31
Appendix C: Hardware environmental compliance	33
Waste Electrical and Electronic Equipment and Battery regulations (WEEE and Battery Directives)	33
Batteries	33
More information	33
Index	35

Chapter 1

About your interactive flat panel

Feature highlights	1
Included accessories	2
Pen and pen tray	2
Remote control	2
Included cables	2

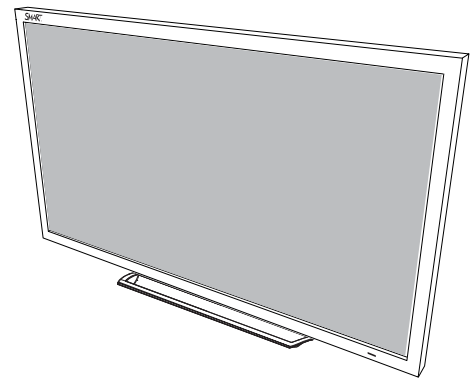
This chapter describes the features of your SMART Board® E70 interactive flat panel and provides information about product parts and accessories.

Feature highlights

Designed specifically for classrooms, the SMART Board E70 interactive flat panel combines a premium touch experience with the power of SMART Notebook® collaborative learning software on a 70" display.

The high-definition, shadow-free 70" (177.8 cm) LED display features low friction coated glass that enables fingers to glide smoothly over the surface, facilitating a natural touch experience. The interactive flat panel also virtually eliminates glare and provides an optimal view from any angle in the classroom, delivering an unparalleled viewing and writing experience to offer the best value for classrooms.

The multitouch interactive flat panel features freestyle multi-user interaction anywhere on the display with Windows® 7 or Windows 8 operating systems, enabling students to collaborate without limitations.

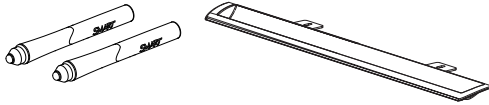


Included accessories

The following accessories are included with your interactive flat panel:

Pen and pen tray

Two pens are included with your interactive flat panel.



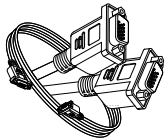
Remote control

The remote control enables you to access the on-screen menus and to change the display and input settings.



Included cables

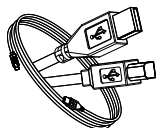
VGA - RGB video input



Power cable - AU/NZ, NA, UK and EU



USB cable - touch interface



Chapter 2

Mounting your interactive flat panel

Choosing a mounting location	4
Choosing a mounting height	4
Cable management	4
Connecting your interactive flat panel	5
Configuring your computer's screen resolution	6
Recommended computer screen resolution	6
Windows 7 and Windows 8 operating systems	7
Mac OS X operating system software	8

WARNING

The weight of the interactive flat panel is 169.8 lb. (77 kg), refer to your local building code to ensure the wall and the mount being used can support this installation. Use appropriating hardware in accordance to building code and always use 3 or more people to lift and install E70 interactive flat panel.

Model	Weight (lb.)	Weight (kg)
SPNL-4055	116 lb 13 oz	53 kg
• SPNL-4065	153 lb	69.4 kg

Model	Mounting plate
SPNL-4055	600 mm × 400 mm
• SPNL-4065	600 mm × 400 mm

Model	Screw length	Fasten force
SPNL-4055	25 mm where the total wall mount bracket and washer thickness is less than 7 mm.	97.36–177.01 in-lb. (11–20 N·m)
• SPNL-4065	30 mm where the total wall mount bracket and washer thickness is less than 7 mm.	97.36–177.01 in-lb. (11–20 N·m)

Choosing a mounting location

Consider the following when you select a location for the interactive flat panel:

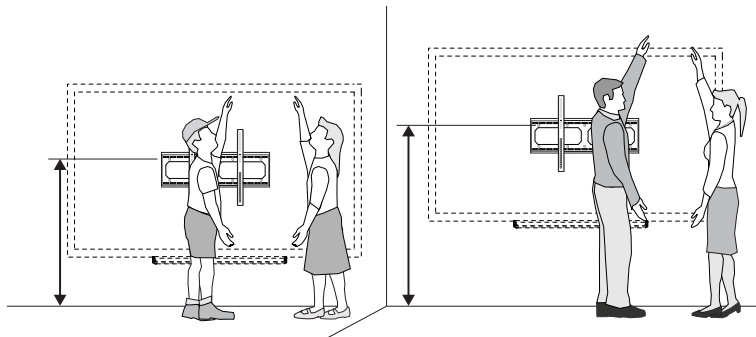
- The wall must be strong enough to support the interactive flat panel and the mounting equipment. The interactive flat panel weighs 169.8 lb. (77 kg).
- Select a wall with a flat, regular surface and sufficient clearance to accommodate your interactive flat panel. Mount the interactive flat panel in a location that's central to your audience's viewing direction.
- Choose a location for the interactive flat panel that's far from bright light sources, such as windows and strong overhead lighting. IR lighting can cause issues with the performance of the cameras and can lead to unintentional or missed touches.

For mobile or adjustable installation options, contact your authorized SMART reseller (smarttech.com/where).

Choosing a mounting height

Consider the general height of the user community when you choose the height for the interactive flat panel.

The flat panel height is based on the midpoint between the reach of the students and the teacher.



Cable management

When you connect cables to the interactive flat panel from a computer and other peripheral devices, ensure that the cables aren't a trip hazard. Use channels and raceways to safely secure and hide cables. Contact your authorized SMART reseller for these accessories.

IMPORTANT

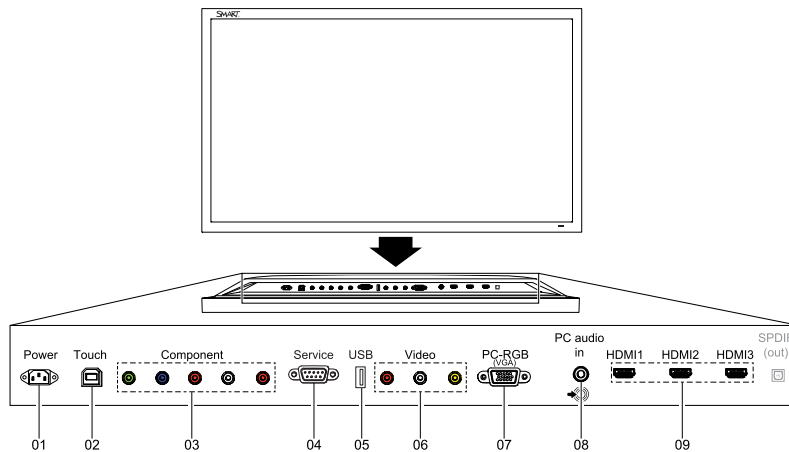
Do not connect the power cable to a power outlet until you have connected all cables to the interactive flat panel.

Connecting your interactive flat panel



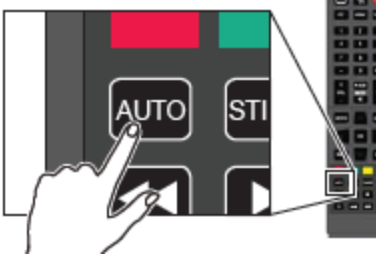
The connector panel is at the bottom of the interactive flat panel.

NOTE

The power, PC-RGB (VGA) and USB cable are included with your interactive flat panel.




No.	Connector	Details
1	AC power	AC power pass-through
2	USB B receptacle	Computer to interactive flat panel touch interface

No.	Connector	Details
3	Video in	Component video receptacle
4	Service port	<div style="border: 1px solid gray; padding: 5px;">  WARNING Do not use this connector. This service connector for the interactive flat panel must be used only by a qualified technician. </div>
5	USB A	Media port (see Multi media mode)
6	Video in	Composite video receptacle
7	Video in	PC-RGB (VGA)
<div style="border: 1px solid gray; padding: 5px;">  IMPORTANT If you see flickering or the display is not sized correctly pressing the Auto button will help with the adjustment process. Ensure that you check and change E70 display to recommended resolution for best performance. </div>		
8	Audio in	Stereo 3.5 mm connector (from computer)
9	Video in	HDMI®

Configuring your computer's screen resolution

When you connect a computer to the interactive flat panel, you may have to adjust the computer's screen resolution to achieve the best image quality and touch performance.

Recommended computer screen resolution

 **NOTE**
SMART recommends using 1920 × 1080 or 1280 × 720 screen resolutions for best image quality and touch performance.

The table below lists the recommended computer screen resolutions for your interactive flat panel:

1920 × 1080 *	1280 × 768
1600 × 1200	1280 × 720 *
1280 × 1024	1024 × 768
1360 × 768	800 × 600
1280 × 960	640 × 480

The resolutions marked with an asterisk (*) are recommended for best image quality and touch performance.

Windows 7 and Windows 8 operating systems

To configure your computer's screen resolution

NOTE

This procedure varies depending on your version of the Windows operating system and your system preferences.

1. Right-click the desktop and then select **Screen Resolution**.
2. Click **Display > SMART E70**.
From the *Display* drop-down menu, select your interactive flat panel.
3. From the *Resolution* drop-down menu, select a screen resolution. See *Recommended computer screen resolution* on the previous page for more information.
4. Click **OK**.

The computer applies the new screen resolution. See [Configuring and calibrating your SMART Board E70 interactive flat panel with Windows](#) for setup and extended display settings.

Mac OS X operating system software

To configure your Mac computer's screen resolution

1. Select the **Apple (🍏)** menu > **System Preferences**.

The *System Preferences* dialog box appears.

2. Click **Displays**.
3. Select a screen resolution from the list. Refer to *Recommended computer screen resolution* on page 6 for more information.

The computer applies the new screen resolution. See [Calibrating your SMART Board E70 interactive flat panel with Mac OS X](#) for setup and extended display settings.

Chapter 3

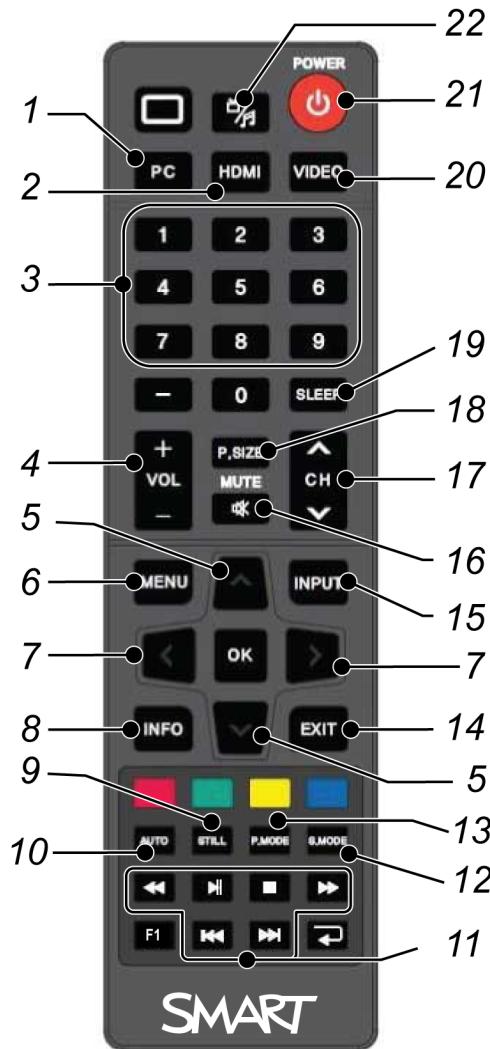
Using your interactive flat panel

Using the remote control	9
Using the control panel	12
On-screen display menu	13
Picture settings	13
Audio settings	13
Setup settings	14
Time settings	14
Multi Media mode	14
Compatible file formats	15
Video	15
Audio	15
Images	15
Cleaning the interactive flat panel	16
Preventing condensation	16


This chapter describes the basic operation and setup of your interactive flat panel.

Using the remote control

Use the remote control to access on-screen menus and to change the interactive flat panel's settings.

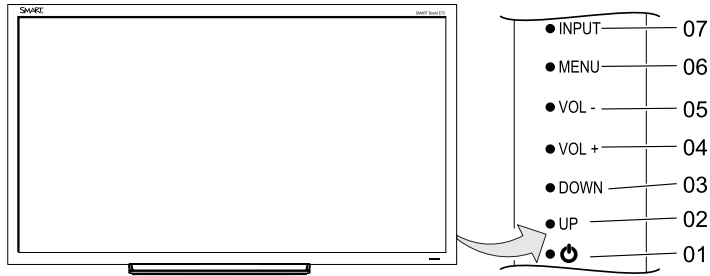


No.	Button	Details
1	PC	Selects the VGA input
2	HDMI	Select the HDMI input
3	[Number buttons]	Press buttons on the number pad to change channels
4	VOL +/-	Increase or decrease the audio output level
5	[Up and down buttons]	Select a menu option in the on-screen display menu
6	MENU	Display the on-screen display menu

No.	Button	Details
7	[Left and right buttons]	<ul style="list-style-type: none"> • Select an option in the on-screen display menu • Use the right button to increase a value • Use the left button to decrease a value
8	INFO	Display the current video source
9	STILL	Turn still picture mode on or off
10	AUTO	Automatically adjusts the VGA video input
		<div style="background-color: #f0f0f0; padding: 5px;">  IMPORTANT This automatically adjusts the image to match the settings the display adapter is sending. In most cases, this will solve touch issues. You can adjust the display settings of the interactive flat panel if needed. </div>
11	[Media buttons]	For use in Multi Media mode
12	S.MODE	Switch between stereo and mono sound
13	P.MODE	Switch between color modes
14	EXIT	Close the on-screen display menu
15	INPUT	Switch video inputs
16	MUTE	Mute the sound
17	CH +/-	Change channels
18	P.SIZE	Select the video aspect ratio
19	SLEEP	Set the sleep timer
20	VIDEO	Select the RCA input
21	Power	Turns the interactive flat panel on or off
22	Multi Media button	Display the Multi Media mode

Using the control panel

Use the control panel on your interactive flat panel to access the on-screen display menu and adjust settings.



No.	Button	Details
1	Power	Turn the interactive flat panel on or turn off
2	UP	Move the highlighted area up to select items in the on-screen display menu
3	DOWN	Move the highlighted area down to select items in the on-screen display menu
4	VOL +	Move the highlighted area left to select items in the on-screen display menu, increase the audio output level or increase a value
5	VOL -	Move the highlighted area right to select items in the on-screen display menu, decrease the audio output level or decrease a value
6	MENU	Display the on-screen display menu
7	INPUT	Select a video input for the interactive flat panel

On-screen display menu

You can access the on-screen display (OSD) menu by pressing **MENU** on the side panel of your interactive flat panel or on the remote control. To exit the OSD menu, press **MENU** on the interactive flat panel's side panel, or press **EXIT** on the remote control.


Picture settings

Option	Value	Function
Picture Mode	Custom Standard Mild Vivid	Sets the picture mode
Brightness	0-100	Sets the overall brightness of the image and background
Contrast	0-100	Sets the brightness of the image in relation to the background
Tint	0-100	Sets the tint of the screen
Color	0-100	Sets the image color intensity
Color Temp	Normal Warm Cold	Sets the color temperature

Audio settings

Option	Value	Function
Surround	[N/A]	Turns the surround sound on or off
Sound Mode	Music Standard User News Movie	Sets the audio mode
Auto Volume	[N/A]	Turns the automatic volume adjustment on or off

Setup settings

Option	Value	Function
Menu Language	[Languages]	Sets the on-screen display menu's language
Menu Trans.	[N/A]	Sets the on-screen display menu's transparency
Screen Mode	16:9 4:3 Zoom1 Zoom2	Sets the image size
Reset	[N/A]	Resets all Setup options
Software Update	[N/A]	 NOTE Software updates should be performed only by a system administrator. Please contact your authorized SMART reseller if you require further assistance.

Time settings

Option	Value	Function
Time mode	Automatic Manual	Sets the time mode
Time	[N/A]	Sets the time manually
Sleep Time	[N/A]	Sets the sleep timer
On Timer	[N/A]	Turns on the On Time function
On Time	[N/A]	Sets a time when the interactive flat panel turns on
Volume	0-100	Sets the volume when the interactive flat panel turns on
Off Timer	[N/A]	Turns on the Off Time function
Off Time	[N/A]	Sets a time when the interactive flat panel turns off

Multi Media mode

You can play video files, view images and listen to music stored on a USB drive. Use the remote control to pause, fast-forward and rewind videos.

Compatible file formats

The interactive flat panel can play the following file types.

Video

Category	Code
MPEG1	MPEG1
MPEG2	MPEG2
MPEG4	AVC
	MPEG-4 Visual
	DivX5
	DivX4
	DivX3
	XviD
	MS-MEG4 V3
	WMV3
MJPEG	M-JPEG


Audio

- AC-3
- AAC
- MP3
- PCM

Images

- JPEG
- BMP
- PNG
- GIF
- TIFF

To access content on a USB drive

1. Turn on the interactive flat panel.
2. On the remote control, press the **Multi Media**  button.

3. Connect a USB drive to the USB A receptacle on the bottom connector panel. See *Connecting your interactive flat panel* on page 5.
4. Using the remote control, select a file.
5. Press the **Play** button on the remote control to play or view the file.

Cleaning the interactive flat panel

Follow these instructions to clean the interactive flat panel without damaging its anti-glare coating or other product components.

CAUTION

- Do not use permanent or dry-erase markers on the screen. If dry-erase markers are used on the screen, remove the ink as soon as possible with a lint-free, non-abrasive cloth.
- Do not rub the screen with a dense or rough material.
- Do not apply pressure to the screen.
- Do not use cleaning solution or glass cleaner on the interactive flat panel screen, because they can deteriorate or discolor the screen.

To clean the screen

1. Press the power button to turn off the display.
2. Wipe the screen with a lint-free, non-abrasive cloth.

Preventing condensation

The interactive flat panel screen contains layers of glass that can collect condensation, especially in the following conditions:

- Temperature extremes with high humidity
- Rapid changes in humidity, which can occur when you operate the product near water (such as a pool, kettle or air conditioner ventilator)
- Direct exposure to sunlight
- Cold air output from an air conditioner towards the bottom of the interactive flat panel.

 **To evaporate condensation from the interactive flat panel**

1. Remove the humidity source from the interactive flat panel, if possible.
2. Turn off the interactive flat panel.
3. Remove any moisture from the interactive flat panel with a smooth, dry cloth.
4. Leave the interactive flat panel turned off for 48 hours.

Chapter 4

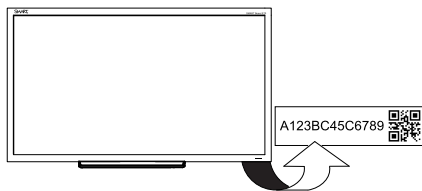
Troubleshooting your interactive flat panel

Locating the serial number	19
Resolving common touch control and resolution issues with Windows and Mac operating systems	20
Resolving image issues	22


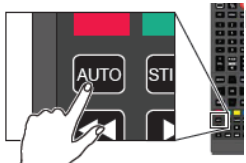
This chapter provides information necessary for solving simple issues that occur with your interactive flat panel. If issues persist, or aren't covered in this chapter, contact SMART Support (smarttech.com/support) or your authorized SMART reseller (smarttech.com/where).


Locating the serial number

If you contact SMART Support, you might be asked to provide the interactive flat panel's serial number. The serial number is located under the front right bezel.



Resolving common touch control and resolution issues with Windows and Mac operating systems

Problem	Cause	Solution
<p>Resolution and/or touch inaccuracies</p> <div data-bbox="342 512 691 940"><p> NOTE</p><p>The recommended resolutions for the SMART E70 interactive flat panel are:</p><ul style="list-style-type: none">• 1920 × 1080 and• 1280 × 720<p>See Recommended computer screen resolution in this guide for more information and settings.</p></div>	<p>The display's resolution is not set to the recommended setting.</p>	<p>Press the Auto button on  button on the remote control. This adjusts the image to match the settings the display adapter is sending. In most cases this will help or solve touch issues. You can manually adjust display settings if needed. See Configuring your computer's screen resolution.</p>
<p>The interactive flat panel doesn't turn on.</p>	<p>The interactive flat panel isn't connected to a power source.</p> <hr/> <p>The interactive flat panel is in Sleep mode.</p>	<p>Connect your interactive flat panel to a power outlet.</p> <hr/> <p>Press the Power button on the menu control panel or on the remote control.</p>

Problem	Cause	Solution
Touch isn't working as expected.	The USB cable between the computer and the interactive flat panel could be loose.	Check all cable connections.
	The interactive flat panel may need to be turned off and then turned on.	Turn the interactive flat panel off and then turn it on.
	Bright lights are interfering with the interactive flat panel.	Close blinds or shades or dim all halogen lights and LEDs.
	Your interactive flat panel isn't calibrated properly.	Your interactive flat panel may need to be re-calibrated.
		 IMPORTANT The interactive flat panels are pre-calibrated and oriented at the factory. Calibration should be performed only by an administrator.
Pen and touch setting may not be selected.		1. For Windows operating systems, open Control Panel > Pen and Touch . 2. Select the Touch tab. 3. Ensure that the following options are selected: Use your finger as an input device and Enable multi-touch gestures and inking . 4. Click Apply and/or OK .
The required drivers for Windows operating system were not installed.		Ensure that Windows automatically installed the required device drivers. The interactive flat panel and AFO TCM10X-700 HID should be listed under Windows Devices and Printers .

Resolving image issues

Problem	Causes	Solution
When the video source is HDMI, the image and audio are low quality.	The cable between the HDMI source and the interactive flat panel could be loose.	Check all cable connections.
	The HDMI cable could be too long.	Ensure that the length of HDMI cable doesn't exceed 23' (7 m).
The image is poor quality and/or doesn't fit on the screen.	The computer's screen resolution is incorrect.	See <i>Configuring your computer's screen resolution</i> on page 6 to select the correct screen resolution.

Appendix A

Configuring and calibrating your SMART Board E70 interactive flat panel with Windows

If your SMART Board E70 interactive flat panel has an inaccurate touch or the touch is not working, you may need to configure or calibrate it. Follow the instructions below to configure and calibrate your SMART Board E70 interactive flat panel.



IMPORTANT

The SMART Board E70 interactive flat panel is factory calibrated. We recommend that you resolve touch inaccuracy through configuration prior to calibration.

Configuring your touch and display settings for the SMART Board E70

If touch is inaccurate:

- See the list below for supported resolutions for your SMART Board E70 interactive flat panel:

1920 × 1080 *	1280 × 768
1600 × 1200	1280 × 720 *
1280 × 1024	1024 × 768
1360 × 768	800 × 600
1280 × 960	640 × 480

The resolutions marked with an asterisk (*) are recommended.



NOTE

There should be no black bars on the top bottom or on either side of the image, the image should completely fill the screen.

- If you have multiple displays for example and laptop connected to your E70, ensure that they are set up correctly (See [Setting up multiple displays](#)).
- Check your graphics card configuration (see [Graphics card configuration](#)).
- Check your panel settings (see [Panel settings](#)).
- Calibrate or clear previously set calibration data (see).

If there is no touch

- Ensure that the USB cable is properly connected.
- Try power cycling the SMART Board E70.
- Ensure that Windows automatically installed the required device drivers the SMART E70 and AFO TCM10X-700 HID should be listed under Windows **Devices and Printers**.
- If you have multiple displays, ensure the pen and touch are settings are correct (see [Setting up multiple displays](#)).

Graphics card configuration

If you're using an unsupported graphics card configuration, you may experience a display problem or issues with touch accuracy. For example, you may experience issues if your graphics card scaling option is set to something other than full-screen.



IMPORTANT

When using an ATI video card they must go into the ATI Catalyst Control panel, go to the Flat Panel menu, select Pixel Format and change it to RGB 4:4:4 timing.

Panel settings

Ensure that you set the SMART Board E70's Screen Mode to either 16:9 or Full and that you select the correct input source.

Ensure that you set Screen Mode to 16:9 or Full, and that you select the correct input source.

To select input

On the remote or on the side panel press **Input**. Use the arrows to select the correct input source.

To set Screen Mode

1. Press **Menu** on the remote or on the side panel.
The on-screen display menu appears.
2. Press the up and down buttons and select **Setup**.
3. Press the right button on the remote control or VOL- to select **Screen Mode**.
Select **16:9** if not already selected.

Setting up multiple displays

When you use your SMART Board E70 in a multiple display environment (that is, your computer has an additional monitor or a built-in display), you must ensure that your display settings are configured properly for your operating system.

Windows XP operating system

Ensure that:

- Your computer's display is mirrored
OR
- The E70 is the primary display

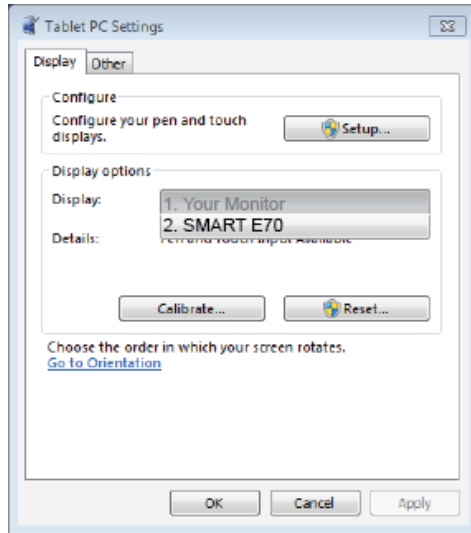
Windows 7 or 8 operating system

To set up the SMART Board E70 as your touch screen:

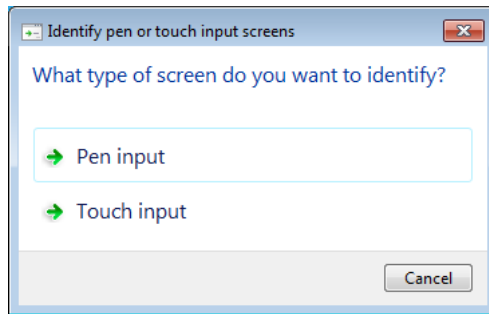
NOTES

- Ensure the resolution has been set to recommend settings prior to calibration.
- Steps to calibration, first **Setup** then **Calibrate** (only calibrate if required).
 - a. Setup tells the system what device is a touch device and enables touch, test touch device after **Setup** if touch is accurate the calibration step may not be required.
 - b. Calibration fine tunes touch points.

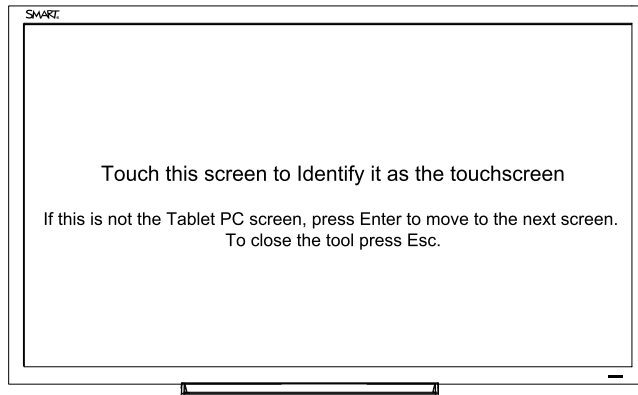
1. Open **Control Panel > Tablet PC Settings**. Ensure that the Display tab is visible. Ensure that the *Display* tab is visible. Select **SMART E70** from the *Display* drop down menu.



2. Click **Setup** Windows displays the following page; select **Touch input**.



3. Windows displays the following page on your first display:



4. If necessary, press Enter until the page is displayed on your touch screen.
5. Tap your touchscreen two or three times until the text changes.

6. Press enter to skip through any remaining screens until the window closes.

**NOTE**

Do not touch any further touch screens as the correct association between the selected monitor and touch screen will be lost.

7. Click **OK**.

**IMPORTANT**

If you have difficulty with the above procedure, set up your E70 as the primary monitor (or main display) and try again. You can switch your main display back to its original setting after you have successfully identified the E70 as your touch screen.

Calibrating your E70 with Windows 7 or 8

Calibration ensures that your E70 recognizes the position of your pen. In Windows 7, when you calibrate for the first time, the screen uses 16 different reference points. This initial calibration applies to all users of the E70. If you calibrate again, only 4 points are used, and apply only to your user account. <http://windows.microsoft.com/en-ca/windows7/getting-more-out-of-your-tablet-pc>

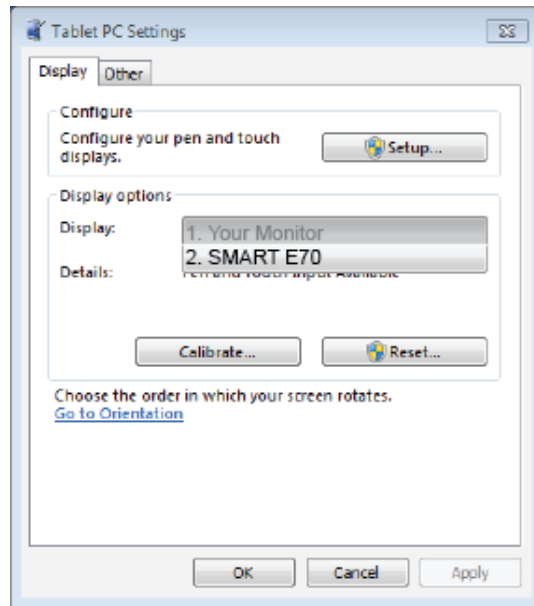
Under normal conditions, the SMART Board E70 should not require calibration. However, calibration may be required if touch is inaccurate.

**NOTE**

Calibration should be done only by an administrator.

To calibrate your SMART Board E70:

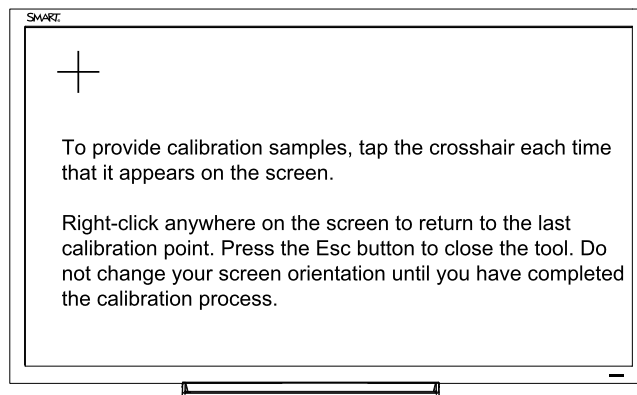
1. Launch Control Panel -> Tablet and PC Settings. Ensure that the **Display** tab is visible. *Select E70* from the display drop down menu.



 **NOTE**

If you have multiple monitors ensure that you have identified the SMART E70 interactive flat panel as your touch screen with Windows 7 and Windows 8 operation systems, see previous step "Setting up multiple displays"

2. Click **Calibrate**.
3. Then tap each cross as they appear.



 **NOTE**

Each cross hair may take several attempts, so please be patient with this process.

4. Follow the instructions on screen.

5. When finished, click OK on the Tablet and PC settings page to commit your changes.



NOTE

If you make a mistake like tapping somewhere else other than the cross hair you will have to repeat the procedure.

The process is complete.



TIP

To clear your calibration data; for example, if you accidentally performed the procedure, click “Reset”.

Appendix B

Calibrating your interactive flat panel with Mac OS X

You need to calibrate the SMART Board E70 interactive flat panel after you install the software or if you change the display resolution.

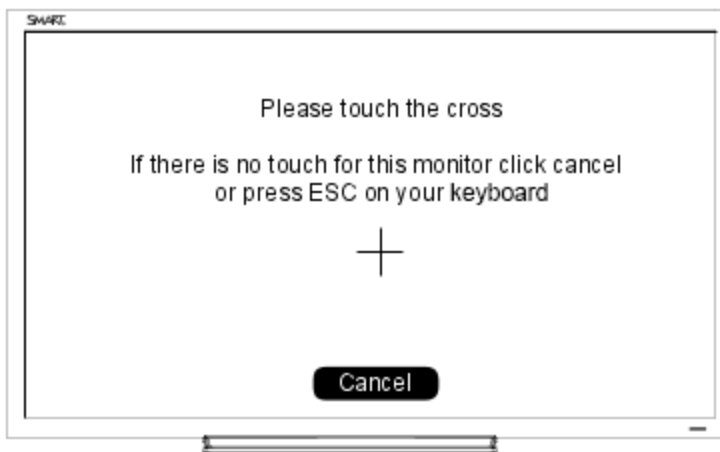
Calibrating your SMART Board E70

Before you calibrate your SMART E70 interactive flat panel, ensure that you have installed the required drivers. See smarttech.com/E70Software for product drivers and software.

To calibrate your SMART Board E70

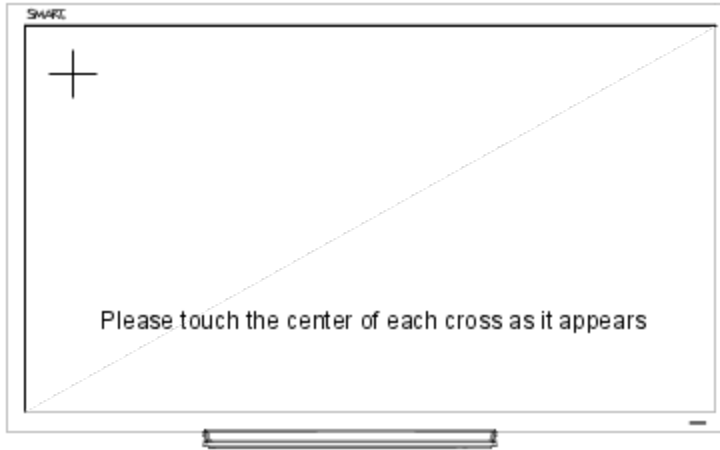
1. Select the Orientation from system tray or SMART Settings

The following screen is displayed on your first monitor.



2. If you have multiple monitors, press Esc on your keyboard until the page is visible on your E70 touch interface.

3. Tap the cross. After a few seconds the following screen appears. In some cases, you may have to tap twice.



4. Tap each cross as they appear once.

**IMPORTANT**

If there are multiple monitors, the orient screen will automatically move to the next monitor. If this other monitor is NOT an E70 touch screen press ESC or click Cancel with the mouse. If you accidentally touch the board while the screen is on this monitor, then you will have to repeat the above procedure.

Appendix C

Hardware environmental compliance

SMART Technologies supports global efforts to ensure that electronic equipment is manufactured, sold and disposed of in a safe and environmentally friendly manner.

Waste Electrical and Electronic Equipment and Battery regulations (WEEE and Battery Directives)

Electrical and electronic equipment and batteries contain substances that can be harmful to the environment and to human health. The crossed-out wheeled bin symbol indicates that products should be disposed of in the appropriate recycling stream and not as regular waste.



Batteries

Remote contains 2 AAA batteries. Recycle or dispose of batteries properly.

More information

See smarttech.com/compliance for more information.

Index

A

accessories
 included 2
Audio settings 13

B

batteries 33

F

file formats
 compatible 15

I

Included cables 2
installation
 choosing a location 4

L

light sources 4
location 4

M

Menu control panel 12
Multi Media mode 14

O

on-screen display menu 13

P

pen 2
Picture settings 13
projector
 installing 3

R

Recommended computer screen
 resolution 6
remote control 2

S

serial number
 locating 19
Setup settings 14

T

Time settings 14
tray 2

W

WEEE and Battery Directives 33

SMART TECHNOLOGIES

smarttech.com/support

smarttech.com/contactsupport

smarttech.com/kb/170534