

IMPORTANT: KEEP THIS
BOOKLET IN A SAFE PLACE
FOR FUTURE REFERENCE


safe·n·sound



Series RM287

COSY PLUS™

4-IN-1 TRAVEL SYSTEM STROLLER

Compatible with Britax Safe-n-Sound® Unity Neos, Britax Safe-n-Sound® Unity isofix compatible baby capsules and Britax B Safe Series car seat (sold separately)

STROLLER SECTION

- 4 STROLLER WARNINGS & IMPORTANT NOTES
- 6 MANUAL HANDLING TECHNIQUES
- 7 STROLLER FEATURES

STROLLER ASSEMBLY

- 8 OPENING THE STROLLER FRAME
- 9 ATTACHING & REMOVING THE REAR WHEELS
- 9 ATTACHING & REMOVING THE FRONT WHEELS
- 10 ATTACHING THE STROLLER SEAT
- 11 ATTACHING THE CANOPY
- 12 ATTACHING THE ARM BAR
- 13 ATTACHING THE SHOULDER HARNESS PADS

STROLLER OPERATION

- 13 USING THE BRAKES
- 14 USING THE FRONT WHEEL SWIVEL LOCK
- 15 ADJUSTING THE BACKREST
- 16 ADJUSTING THE LEG REST
- 16 ADJUSTING THE PIVOT HANDLE
- 17 SECURING YOUR CHILD HARNESS
- 18 ADJUSTING THE HARNESS
- 18 OPENING THE HARNESS
- 19 ADJUSTING THE SHOULDER HARNESS HEIGHT
- 19 USING THE STORAGE BASKET
- 20 USING THE TETHER STRAP
- 21 REMOVING & CHANGING THE STROLLER SEAT
- 22 CONVERTING STROLLER TO LAY FLAT MODE
- 23 USING THE STROLLER
- 24 FOLDING THE STROLLER
- 25 LIFTING & CARRYING THE STROLLER

BABY CAPSULE OPERATION

- 26 BABY CAPSULE
- 27 INSTALLING & REMOVING THE CLICK & GO™ ADAPTORS
- 28 ATTACHING THE BRITAX SAFE-N-SOUND® UNITY BABY CAPSULE
- 28 REMOVING THE BRITAX SAFE-N-SOUND® UNITY BABY CAPSULE
- 29 ATTACHING THE BRITAX B SAFE SERIES (FOR NZ MARKET)
- 29 REMOVING THE BRITAX B SAFE SERIES (FOR NZ MARKET)

CARE & MAINTENANCE

- 30 GENERAL MAINTENANCE & REPAIR
- 31 CLEANING

WARRANTY

- 33 MAKING A WARRANTY CLAIM
 - 33 AUSTRALIAN CONSUMER LAW
 - 33 SAFE-N-SOUND® WARRANTY
 - 34 INTERNATIONAL WARRANTY
- 35 NOTES

OPTIONAL ACCESSORIES

Click & Go™ Adaptors
(Contact Britax Customer Service)

COMPATIBLE WITH

Britax Safe-n-Sound® Unity Neos Baby Capsules
(with Click & Go™ Adaptors)

Britax Safe-n-Sound® Unity Baby Capsule Isofix
(with Click & Go™ Adaptors)

Britax B Safe Series car seat (for NZ market)
(with Click & Go™ Adaptors)

Always follow the manufactures instructions.

Read all instructions carefully before assembly and use of this stroller.

The correct use and maintenance of this product is essential.

 **WARNING****TO AVOID INJURY OR DEATH ALWAYS APPLY THE BRAKES WHENEVER THE STROLLER IS STATIONARY.**

- DO NOT LEAVE CHILDREN UNATTENDED.
- SECURE THE CHILD IN THE HARNESS AT ALL TIMES.
- DO NOT CARRY EXTRA CHILDREN OR BAGS ON THIS STROLLER.
- MAKE SURE CHILDREN ARE CLEAR OF ANY MOVING PARTS IF YOU ADJUST THE STROLLER.
- DO NOT USE ANY ACCESSORIES OTHER THAN THOSE APPROVED FOR USE WITH THIS STROLLER BY BRITAX.
- IT IS UNSAFE TO USE ACCESSORIES NOT APPROVED FOR USE WITH THIS STROLLER.
- THE MAXIMUM WEIGHT OF THE CHILD IS NOT TO EXCEED:
STROLLER: 20KG
LAY FLAT MODE: 9KG
MOTHER FACING MODE: 15KG
BRITAX UNITY BABY CAPSULE: 12KG
BRITAX B-SAFE 35 CAR SEAT: 15.8KG

FOR IMPORTANT NOTES AND WARNINGS ON ACCESSORIES

REFER TO THEIR INDIVIDUAL SECTIONS IN THIS BOOK OR THE INSTRUCTION MANUAL INCLUDED WITH THE INDIVIDUAL PRODUCTS. THE MAXIMUM WEIGHT VARIES FOR EACH ACCESSORY.



CAUTION

THIS **CAUTION** SYMBOL IS SHOWN AT CERTAIN STEPS IN THIS INSTRUCTION MANUAL TO HIGHLIGHT THE DANGER OF BEING INJURED BY MOVING PARTS.

IMPORTANT NOTES

- Use great care when using the stroller on stairs, escalators, travelators or other moving surfaces.
- It is recommended to remove the child from the stroller before going up or down stairs or escalators.
- Do not lift the stroller by the arm bar (supplied) because it may disengage.
- Do not allow children to stand on the seat.
- Do not hang bags unless they are supplied or goods from the handle as this could cause the stroller to tip over.
- Do not leave the stroller and its accessories near an open fire or exposed flame.
- Do not place more than 10kg in the basket.

THE **SMART** LIFTING TECHNIQUE

This technique can be used to pick up small light loads from low levels.

SIZE UP THE LOAD

- Assess the load (size, shape and weight).
- Assess whether the load needs to be moved;
- Where is it going to be placed, check that there are no obstructions;
- Assess whether mechanical or human assistance is required.

MOVE THE LOAD AS CLOSE TO THE BODY AS POSSIBLE

- A load is heavier to lift or carry if it is not close to the body.
- The whole hand should be used to ensure a firm grip.

ALWAYS BEND YOUR KNEES

- Maintain balance.
- Keep feet apart and in a comfortable position.
- Minimise lower back bending.
- Bend knees preferable at as large an angle as possible but not at a right angle use a semi squat in preference to a full squat.

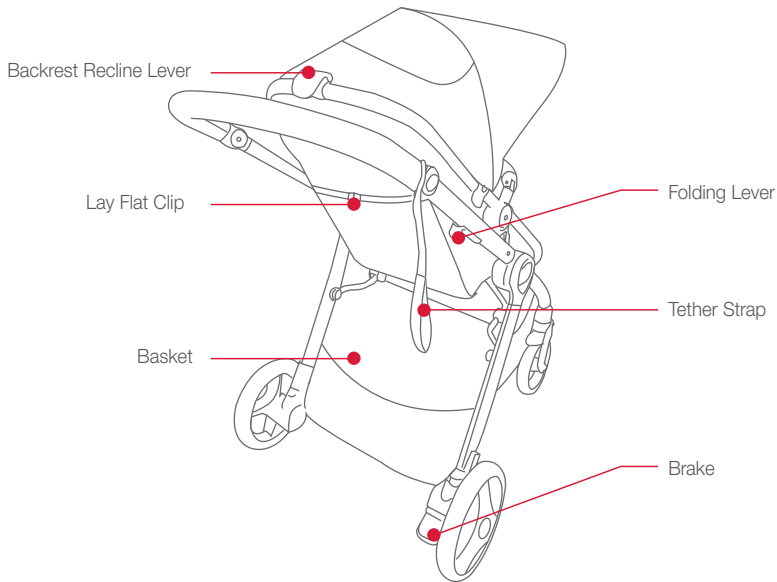
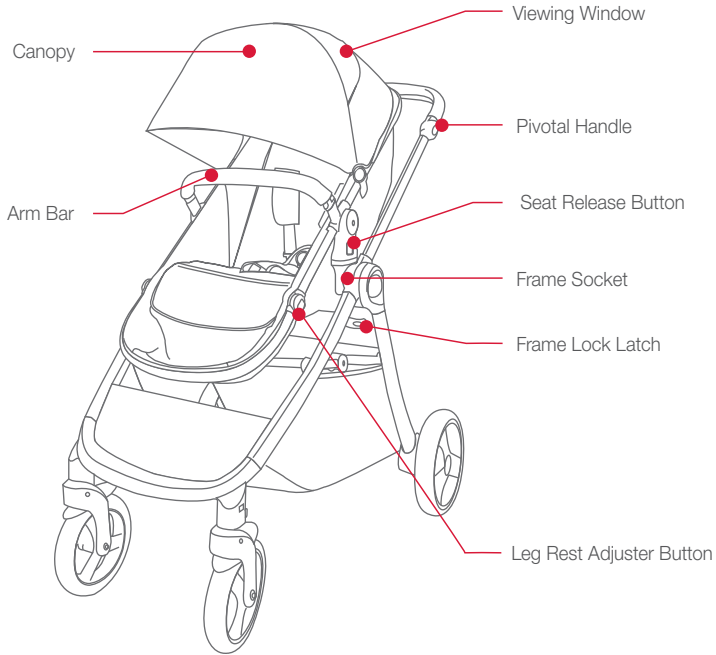
RAISE THE LOAD WITH YOUR LEGS

- Achieve the lift smoothly and without jerkiness.
- Maintain the normal curvature of the spine to allow the force of the load to be distributed evenly from the spine to the pelvis.

TURN YOUR FEET IN THE DIRECTION THAT YOU WANT TO MOVE THE LOAD

- Avoid unnecessary bending, twisting and reaching.
- Change direction by turning your feet and not your back.
- To set the load down, squat down, keep your head up and
- Let your legs do the work.

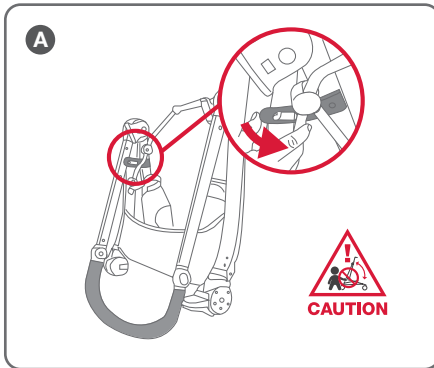
Remember to **'THINK TALL'** chest lifted, shoulders relaxed, chin tucked in and head level.



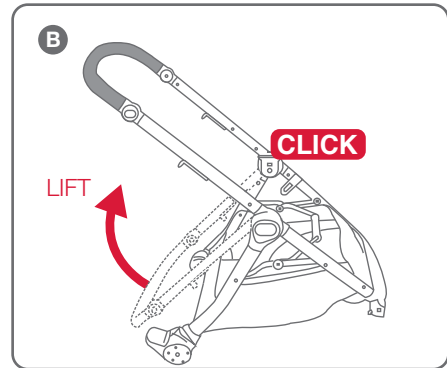
IMPORTANT NOTES:

PLEASE REFER TO PAGE 4 FOR SMART LIFTING TECHNIQUES.

- Release the storage latch with due care and open the frame.
- When opening the stroller, be aware of the danger of being injured by moving parts and locking devices during the process. Keep all hands and limbs clear of these parts.
- There is potential for fingers or parts of the body to be injured when the stroller is being unfolded, due care should be exercised.
- Keep children clear of the stroller when unfolding the stroller.
- Open the stroller slowly and be careful where you place your hands. Keeping your hands on the handle is the best way to unfold the stroller.

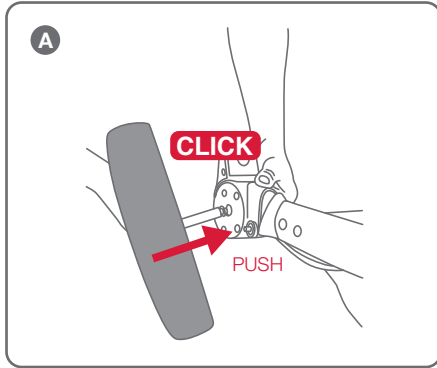
OPENING THE STROLLER FRAME

A Open the frame lock latches inside the frame. The lower part of the stroller will be open.

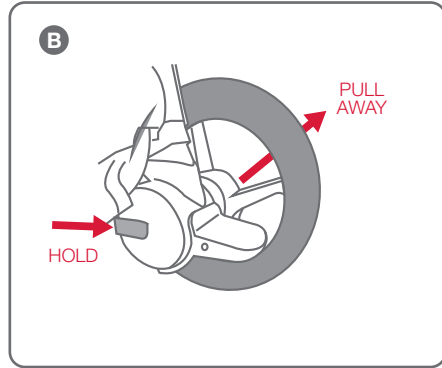


B Lift the handle upwards until the frame is fully open and locked.

ATTACHING & REMOVING THE REAR WHEELS

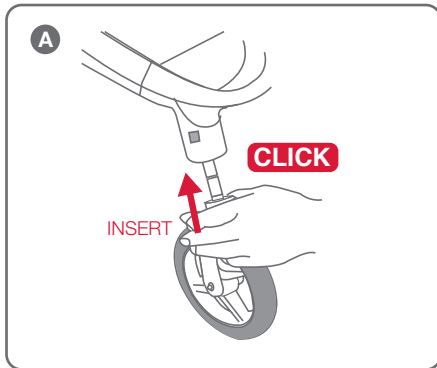


A Insert wheel axle into the moulding and push in until you hear a 'click'. Pull on each wheel to make sure it is securely attached. Repeat the process if not locked in.

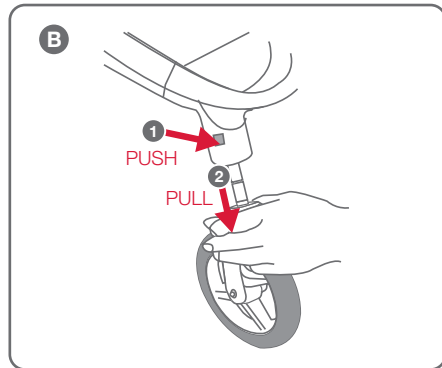


B To remove the rear wheels, press and hold the release button in the wheel housing and pull away.

ATTACHING & REMOVING THE FRONT WHEELS



A Insert each front swivel wheel assembly into the wheel moulding and push in until you hear a 'click'. Pull on each wheel to make sure it is securely attached. Repeat the process if not locked in.

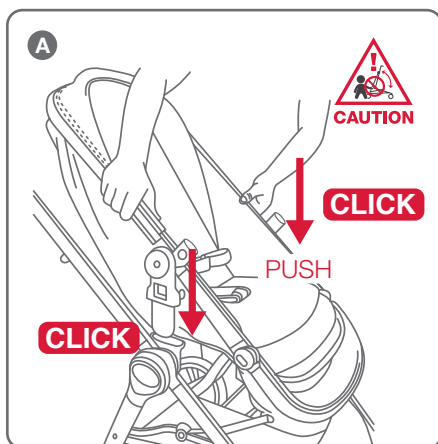


B To remove the front wheels, push the release button on wheel moulding.

ATTACHING THE STROLLER SEAT

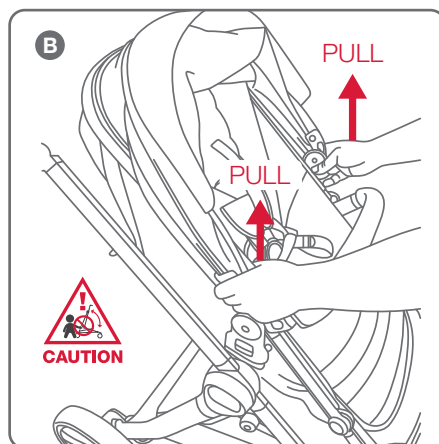
IMPORTANT NOTES

- Always remove your child from the stroller seat before installing, removing or changing the seat direction.
- The seat is reversible so it can be attached to the frame in the forward facing position or the rearward facing position.



A Hold the stroller seat over the frame and align the seat connectors with the frame sockets.

Push down on the seat until both stroller seat connectors have locked into the frame sockets.

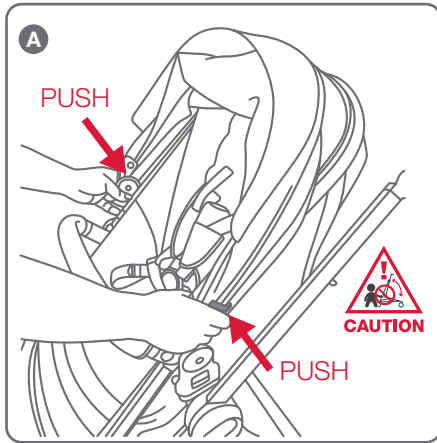


B Pull up on both sides of the seat to ensure the seat is locked.

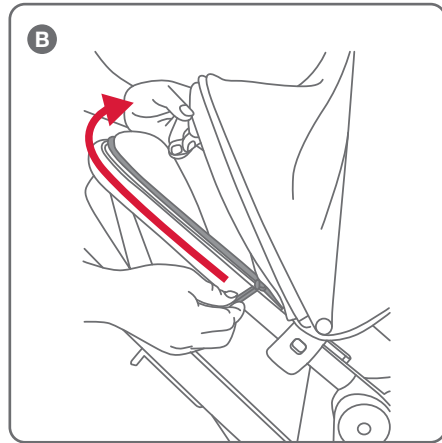
ATTACHING THE CANOPY

IMPORTANT NOTE

The sun is very strong. **DO NOT LEAVE YOUR CHILD EXPOSED TO THE SUN.** The canopy or hood on this product will not give your child total protection from the harmful rays of the sun.



A Place the canopy on the stroller seat and push the clips on the sides of the canopy onto the stroller seat until they snap into place.

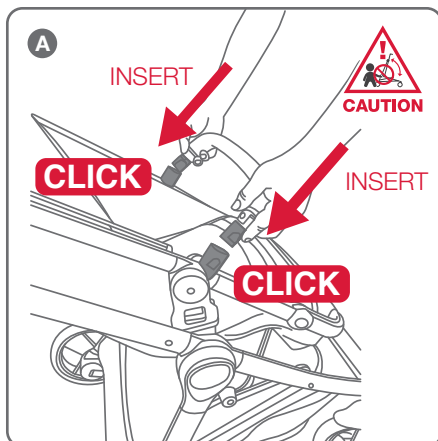


B Attach the canopy to the seat unit with the zipper.

ATTACHING THE ARM BAR



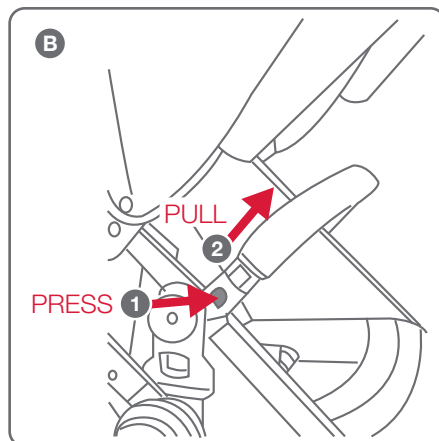
WHEN A CHILD IS IN THE STROLLER KEEP THE ARM BAR ATTACHED TO THE ADAPTORS AT ALL TIMES.



A Insert the arm bar mouldings into the sockets on each side of the stroller frame and push down on the arm bar until you hear a 'click'.

To assist with putting a child in the stroller, you can release the arm bar on one side. Press the button on the side of the arm bar moulding and pull the arm bar up and out of the socket. Rotate the arm bar clear of the stroller.

Reattach the arm bar after fastening the child in the harness.

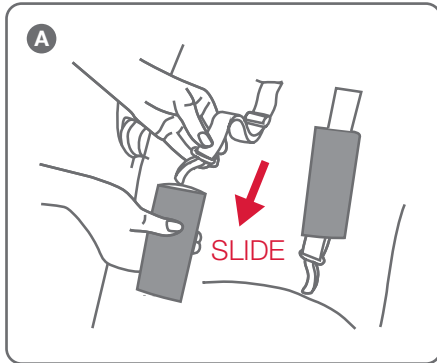


B To remove the arm bar, press the button on each side of the arm bar moulding and pull arm bar up and out of the sockets.

ATTACHING THE SHOULDER HARNESS PADS

IMPORTANT NOTE

Ensure that the shoulder straps are fitted through the appropriate harness slots to suit your child's seated shoulder height. (Refer to Page 25)

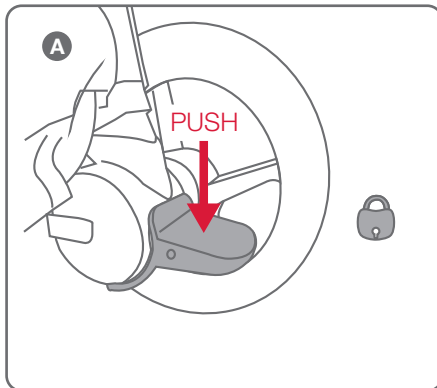


A Slide the shoulder harness pads onto the shoulder harness straps and adjust to the position which fits comfortably on the child.

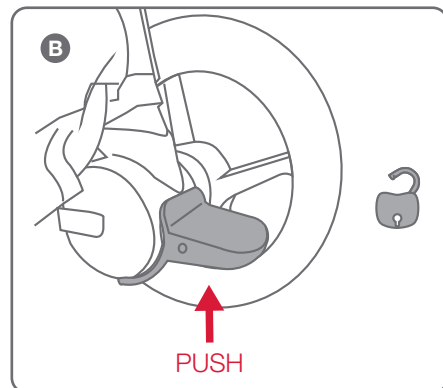
USING THE BRAKES

⚠ WARNING

ALWAYS APPLY THE BRAKES WHEN THE STROLLER IS STATIONARY.



A Push down the brake pedal to engage the brake.

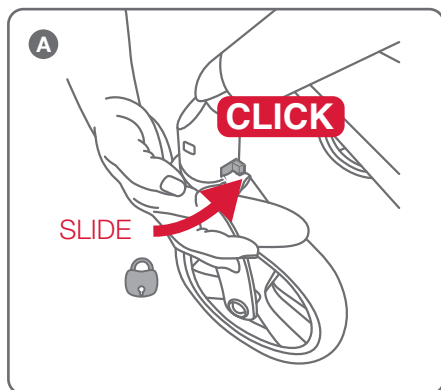


B Push the brake pedal upward until the brake is disengaged.

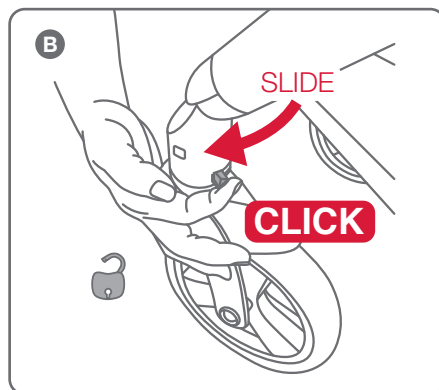
USING THE FRONT WHEEL SWIVEL LOCK

PLEASE NOTE

- Always lock the swivel wheels when using the stroller on rough surfaces as this will minimise wheel wobble.
- The swivel wheels should only be locked when the wheels are in the trailing position (wheels under frame).



A To lock the front wheels into the fixed position, slide the swivel wheel locking clip towards the inside of the frame until you hear a 'click'.

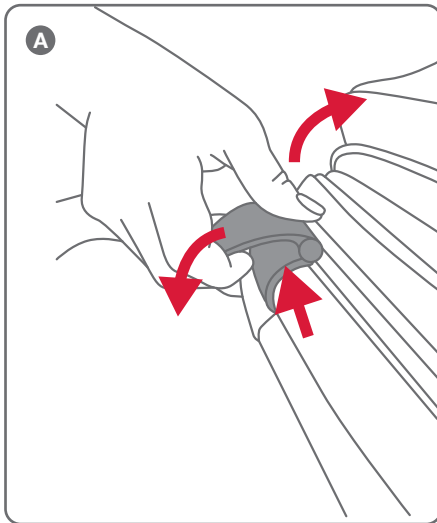


B To allow the wheels to swivel, slide the black swivel wheel locking clip towards the outside of the frame until you hear a 'click'.

ADJUSTING THE BACKREST

⚠ WARNING

- THE UPRIGHT POSITIONS ARE NOT SUITABLE FOR USE WITH CHILDREN LESS THAN 6 MONTHS OLD.
- THE LOWEST RECLINE POSITION SHOULD BE USED TO TRANSPORT BABIES. THE BACKREST CAN BE ADJUSTED TO A MORE UPRIGHT POSITION AS THE CHILD GROWS OLDER AND IS ABLE TO SUPPORT ITS HEAD WITHOUT ASSISTANCE.
- IF THE CHILD IS SITTING IN THE SEAT, SUPPORT THE BACKREST AS IT RECLINES. IF YOU HAVE DIFFICULTY ADJUSTING THE BACKREST YOU MAY NEED TO REMOVE THE CHILD FROM THE SEAT TO ALLOW YOU TO RAISE OR LOWER THE BACKREST WITH EASE.



A Lift the recline lever on the back of the seat and hold while raising or lowering the backrest to the desired position.

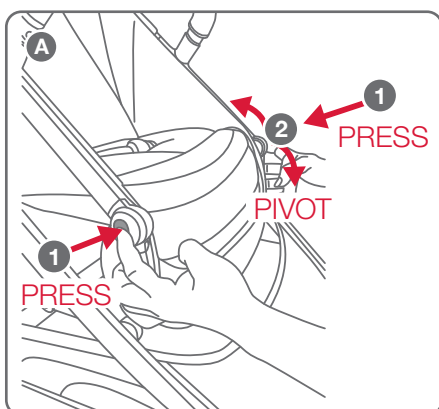
PLEASE NOTE

There are four backrest positions.

ADJUSTING THE LEG REST

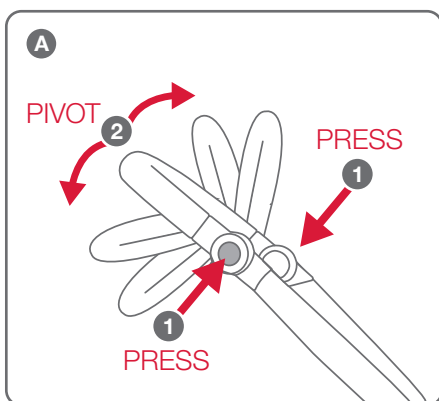
IMPORTANT NOTES

- The leg rest feature is provided for your child's comfort.
- The leg rest is not designed to support extra weight.
- Do not allow children to stand or sit on the leg rest, it will disengage if extra weight is applied.
- If leg rest disengages simply lift up again to reset leg rest mode.



A Press the two release buttons on both sides of the leg rest hinge and hold while raising or lowering the leg rest to the desired position.

ADJUSTING THE PIVOTING HANDLE



A Press the two release buttons on the outside of the handle and hold while raising or lowering the handle to the desired position.

When the desired height has been achieved let go of both release buttons.

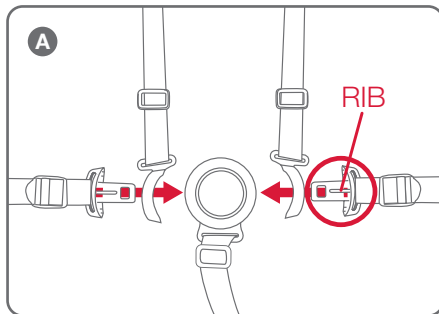
SECURING YOUR CHILD HARNESS

⚠ WARNING

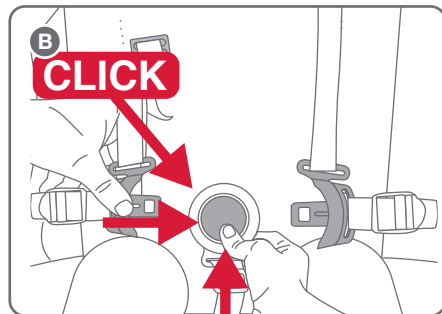
- ENSURE YOUR CHILD IS SECURED WITH A CORRECTLY ADJUSTED HARNESS.
- THE ADJUSTED HARNESS SHOULD CLOSELY FIT THE CHILD.
- NEVER LEAVE THE HARNESS BUCKLED WHEN NOT FITTED TO A CHILD IN THE STROLLER, BECAUSE THE HARNESS CAN FORM LOOPS WHICH MAY POSE A STRANGULATION HAZARD.
- WHEN HARNESS IS NOT IN USE, DISCONNECT SHOULDER STRAPS FROM THE WAIST STRAPS AND BUCKLE TO PREVENT STRANGULATION.
- A five point harness is provided to restrain your child.
- Buckle tongues separate for added safety.
- To reconnect buckle tongues and to secure the child in the harness please follow the steps below carefully.

PLEASE NOTE

Each waist buckle tongue has a raised rib on one side and can only be locked into the buckle assembly with the raised rib facing up. Ensure the harness straps are not twisted as they may become uncomfortable for the child.



A Always apply the brakes before placing child in stroller seat. Position the shoulder strap near the child's shoulder and position crotch strap between the legs. Thread the waist strap buckle tongues through the shoulder straps tongue guides.



B Hold the centre button in on the crotch buckle and insert the waist buckle tongues into the crotch strap buckle until you hear a 'click'. Repeat the procedure on the other side. Please ensure it is locked.

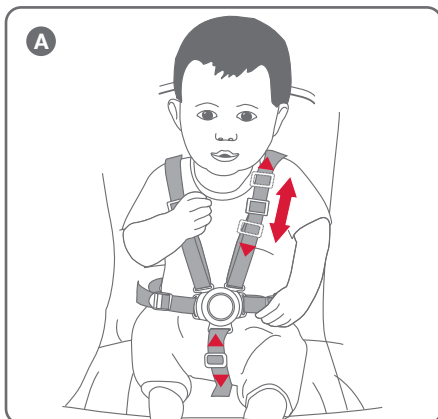
⚠ WARNING

USE THE HARNESS AT ALL TIMES.

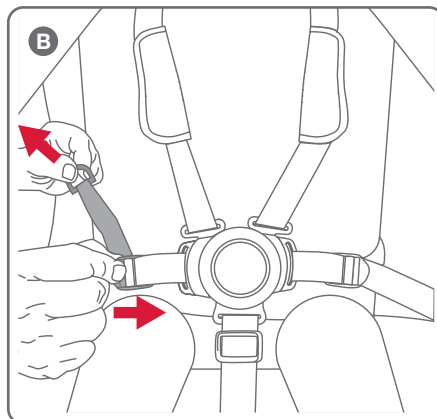
ADJUSTING THE HARNESS


WARNING

DO NOT SLIDE 3 BAR SLIDER OVER THE SEWN TAB ON SHOULDER HARNESS.

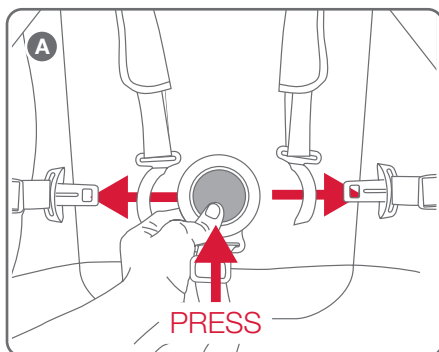


A Tighten or loosen the shoulder straps and crotch strap by sliding the 3 bar sliders up or down. The crotch strap should be adjusted to a snug fit.



B Tighten or loosen the waist straps, hold and lift the 4 bar harness adjuster and pull the harness strap to adjust to the desired fit. The waist strap needs to fit firmly around the child.

OPENING THE HARNESS

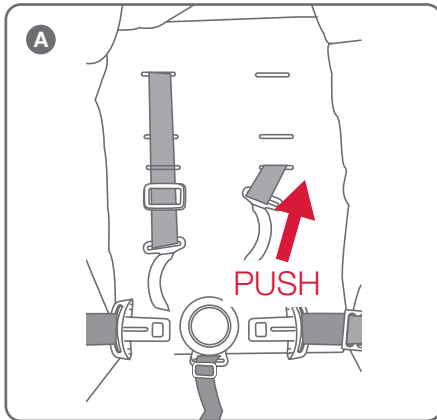


A Release the harness by pressing the centre button in on the crotch buckle while pulling the waist tongues out of the crotch buckle.

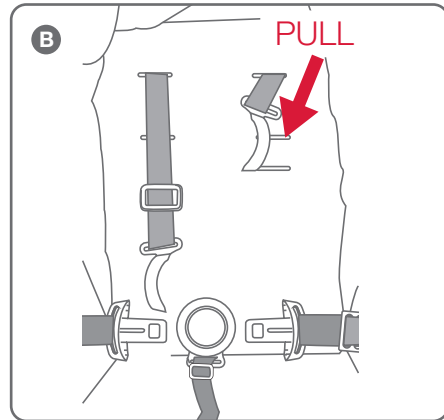
ADJUSTING THE SHOULDER HARNESS HEIGHT

IMPORTANT NOTE

The harness can be adjusted to three different heights to accommodate the child. The shoulder straps must be positioned near the child's shoulders.



A To change the shoulder harness height, push the shoulder harness tongue out of the current harness slot and through the back of the seat.



B Select the appropriate shoulder harness height and pull each shoulder harness tongue through the harness slot.

USING THE STORAGE BASKET

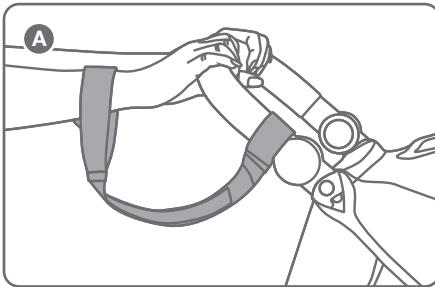
IMPORTANT NOTE

Do not place more than 10kg in the basket.

USING THE TETHER STRAP

⚠ WARNING

- THE STROLLER IS DESIGNED FOR USE ON FLAT OR GENTLY SLOPING SURFACES, AND MAY BE UNSTABLE ON HIGHER SLOPING AND UNEVEN SURFACES - USERS SHOULD BE AWARE OF THE POSSIBILITY OF THE STROLLER ROLLING AWAY OR TIPPING OVER.
- NEVER LET GO OF THE STROLLER WHEN PARKED ON AN INCLINE OR SLOPING SURFACE BECAUSE IT MAY SLIDE OR TIP OVER. ALWAYS PARK ON A FLAT SURFACE AND APPLY THE BRAKES.
- ALWAYS APPLY THE BRAKES WHENEVER THE STROLLER IS STATIONARY.



A A wrist tether strap is provided hand through the tether strap loop whenever you use the stroller. Only remove your hand from the tether strap loop when the brakes have been applied to the stroller wheels.

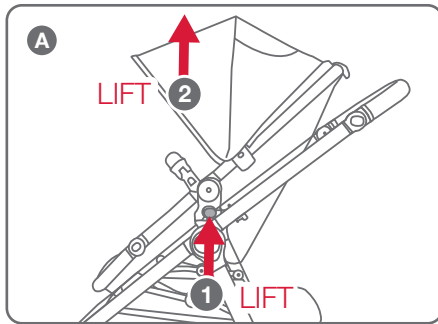
⚠ WARNING

USE THE TETHER STRAP TO STOP THE STROLLER ROLLING AWAY.

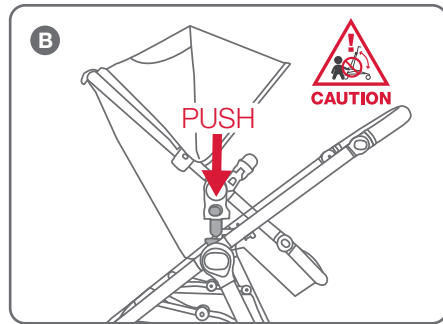
REMOVING & CHANGING THE STROLLER SEAT

IMPORTANT NOTE

- Always remove your child from the stroller seat before installing, removing or changing the seat direction.
- **PLEASE NOTE:** The seat is reversible so it can be attached to the frame in the forward facing position or the rearward facing position.
- The maximum weight of the child using this stroller in reward facing position (mother facing baby position) is 15kg.



A Lift both release levers on the seat connectors at the same time and lift the seat up and away from the stroller frame.

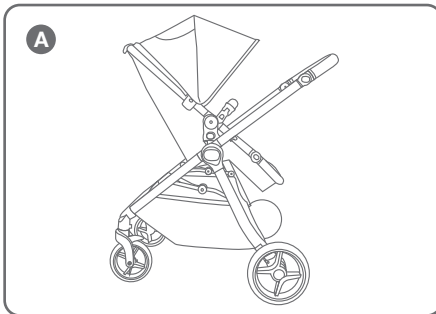


B Turn the seat facing opposite direction and then attach the stroller seat to the frame in the rearward facing position.

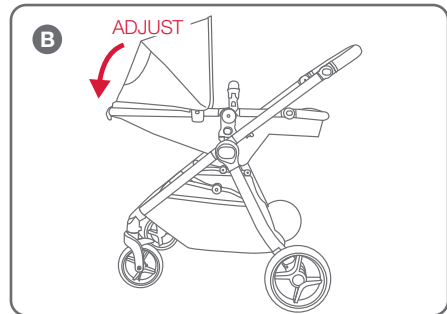
CONVERTING STROLLER TO LAY FLAT MODE

⚠ WARNING

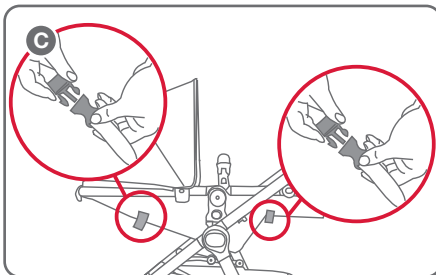
- USE HARNESS AT ALL TIMES.
- LAY FLAT MODE IS SUITABLE FOR DAY TIME NAPPING ONLY.
- DO NOT USE LAY FLAT MODE FOR OVERNIGHT SLEEPING.
- DO NOT USE THE LAY FLAT MODE ONCE THE CHILD CAN SIT UP.
- LAY FLAT MODE ONLY TO BE USED ON THE STROLLER FRAME.
- THE MAXIMUM WEIGHT OF THE CHILD USING LAY FLAT MODE IS NOT TO EXCEED 9KG.
- DO NOT LEAVE CHILD UNATTENDED.



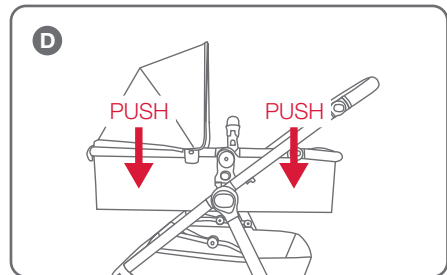
A Put stroller seat into reverse facing position.



B Using the recline lever adjust the backrest to the lowest position.



C Unbuckle the clips on the backrest and under the leg rest.



D Push down the backrest and leg rest to complete the converting. Use the harness to secure the baby in lay flat mode.

USING THE STROLLER

PLEASE REFER TO PAGE 4 FOR SMART LIFTING TECHNIQUES.

- Always ensure you bend your knees where appropriate and take due care when lifting the frame.
- With your hand through the wrist tether strap loop, push the stroller holding the handle.
- The stroller can be steered in the desired direction - allowing the front wheels to swivel will make this easier.
- The front wheels may wobble or oscillate when walking fast, locking the front swivel wheels will stop this.
- The stroller can be taken up kerbs by either pressing down on the handles and raising the front wheels or turning the stroller around and pulling the stroller up the kerb.
- Caution is required when pushing the stroller on a steep slope as the stroller may become unstable. Always hold the handle firmly.
- Do not run with the stroller.
- Whenever you stop, always apply the brakes before you leave the stroller.
- Do not hang bags or goods unless it is supplied from the handle. Use the storage basket.

FOLDING THE STROLLER

PLEASE REFER TO PAGE 4 FOR SMART LIFTING TECHNIQUES.

IMPORTANT NOTES

- Remove the child from the stroller before commencing any folding operation.
- Fold the stroller slowly and be careful where you place your hands.
- When folding the stroller, be aware of the danger of being injured by moving parts and locking devices during the process. Keep all hands and limbs clear of these parts.
- There is potential for fingers or parts of the body to be injured when the stroller is being folded, due care should be exercised.
- Keep children clear of the stroller during folding the stroller.

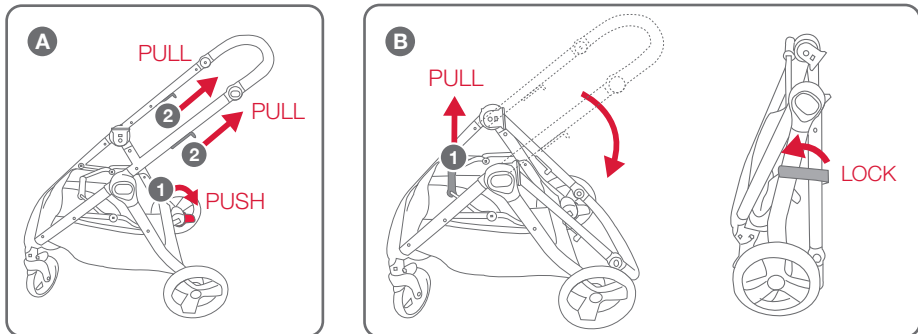
PLEASE NOTE: The stroller seat and wheels can be removed to reduce the total folded size.

FOLDING TIPS:

For easier handling. It is recommended to remove the stroller seat from the frame (Refer to Page 27) before folding. Then fold the frame and put both the seat and frame in the car. For smaller cars it may be convenient to simply remove the rear wheels.

IMPORTANT NOTES

- Make sure the seat is in upright position before folding if seat is attached.
- Remove the baby capsule if connected to the frame prior to folding.
- The second seat **MUST** be removed prior to folding.
- The rain cover must also be removed if fitted.



A Engage the brake. Pull the latches on the handle tube upwards and drop down the handle all the way.

B Pull the handle under the stroller seat upwards until you hear a 'click' and the frame is fully folded and the frame lock latch is locked in properly.

LIFTING & CARRYING THE STROLLER

PLEASE REFER TO PAGE 4 FOR SMART LIFTING TECHNIQUES

IMPORTANT NOTES

- To avoid injury: bend your knees when opening, lifting, carrying, folding, unfolding or adjusting the stroller or any accessories.
- To avoid damage, do not place heavy objects on top of the folded stroller.
- Ensure that the storage latch is engaged when lifting or carrying the vehicle.

BABY CAPSULE (sold separately)

- IT IS UNSAFE TO USE ACCESSORIES NOT APPROVED FOR USE WITH THIS STROLLER.
- DO NOT USE ANY ACCESSORIES OTHER THAN THOSE APPROVED FOR USE WITH THIS STROLLER BY BRITAX.
- THE MAXIMUM WEIGHT OF THE CHILD USING THE BRITAX SAFE-N-SOUND® UNITY NEOS BABY CAPSULE OR BRITAX SAFE-N-SOUND® UNITY BABY CAPSULE ISOFIX COMPATIBLE IS NOT TO EXCEED 12KG. THE BRITAX B SAFE SERIES CAR SEAT (FOR NZ MARKET) IS NOT TO EXCEED 15.8KG.

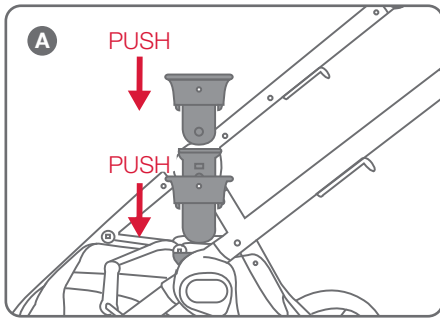
IMPORTANT NOTES

- The Britax Safe-n-Sound® Unity Neos Baby Capsule, Britax Safe-n-Sound® Unity Baby Capsule Isofix compatible or the Britax B Safe Series (for NZ market) are the only compatible baby capsules designed to fit the Cosy Plus stroller, the Unity Baby Capsule to be used with Click & Go™ adaptors (sold separately - Contact Britax customer service team for purchase).
- Remove the stroller seat from the stroller frame before installing the baby capsule.
- The baby capsule must be correctly fitted and locked onto the frame.
- The baby capsule must only be used in the rearward facing position (baby facing parent), fitted facing toward the stroller handle.
- Secure the child using the baby capsule harness at all times.
- Do not leave the child in the baby capsule for extended periods.
- The baby capsule is designed to provide mobility outside of the car but it should not be used instead of an appropriate cot.
- The baby capsule must be removed from the stroller frame before folding.
- The sun is very strong. Do not leave your child exposed to the sun. The canopy or hood on this product will not give your child total protection from the harmful rays of the sun.

INSTALLING AND REMOVING THE CLICK & GO™ ADAPTORS

⚠ WARNING

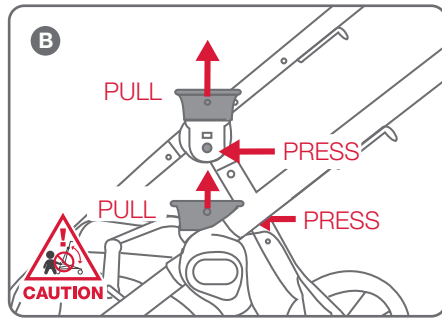
THE CLICK & GO™ ADAPTORS MUST BE ATTACHED TO THE STROLLER FRAME BEFORE INSTALLING THE BRITAX SAFE-N-SOUND UNITY NEOS BABY CAPSULE, BRITAX SAFE-N-SOUND UNITY BABY CAPSULE ISOFIX COMPATIBLE OR BRITAX B SAFE SERIES (FOR NZ MARKET) .



A Select the Click & Go™ adaptor that has a coloured dot and align with the coloured dot on the frame socket.

Note: Coloured dots are only on one side of the frame socket. Firmly push down on the Click & Go™ adaptors until you hear a 'click' and a green indicator can be seen through a window in the frame socket. Repeat on the other side with the receiver with no coloured dot.

To ensure the receiver is engaged before placing the baby capsule.



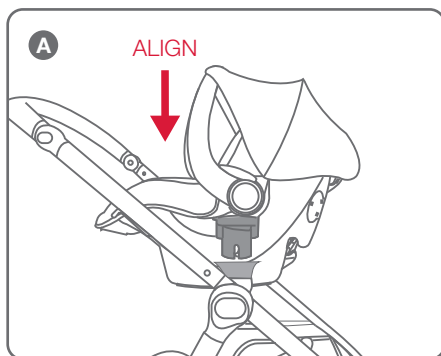
B To remove the Click & Go™ adaptors, press in and hold the button on the top of the adaptor and pull up the adaptors out of the frame sockets.

ATTACHING THE BRITAX SAFE-N-SOUND® UNITY BABY CAPSULE

PLEASE NOTE

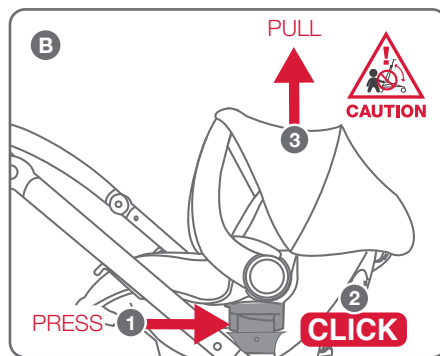
These instructions are for installing and removing the baby capsule on the stroller only. For installing and proper use of the baby capsule in the car, please follow the instructions manual provided with the baby capsule.

Ensure the baby is secured in the baby capsule with the harness at all times. Refer to the baby capsule instruction manual regarding placing and securing your baby in the baby capsule.



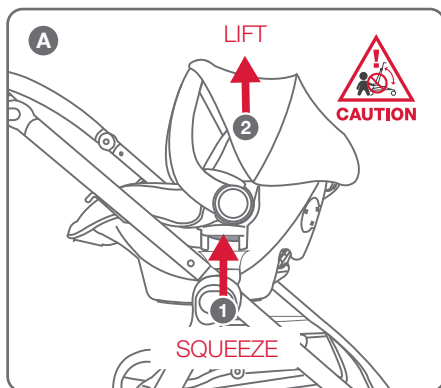
A Engage the stroller brake. Align the Unity Baby capsule with the Click & Go™ adaptors.

The Baby Capsule must be facing handle.



B Press firmly down on the Click & Go™ adaptors until you hear a 'click'. Pull up the Baby Capsule to ensure they are locked into the stroller frame.

REMOVING THE BRITAX SAFE-N-SOUND® UNITY BABY CAPSULE



A Before remove the Baby Capsule, lock the stroller brake first.

Squeeze both release levers on the Click & Go™ connectors at the same time and support the weight of the baby capsule.

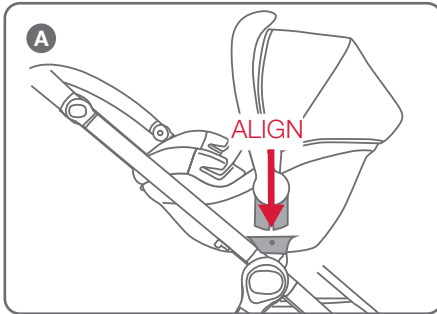
Lift and remove the baby capsule from the stroller frame.

ATTACHING BRITAX B SAFE SERIES (FOR NZ MARKET)

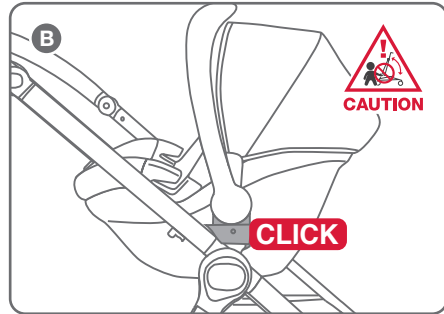
PLEASE NOTE

These instructions are for installing and removing the baby capsule on the stroller only. For installing and proper use of the baby capsule in the car, please follow the instructions manual provided with the baby capsule.

Ensure the baby is secured in the baby capsule with the harness at all times. Refer to the baby capsule instruction manual regarding placing and securing your baby in the baby capsule.



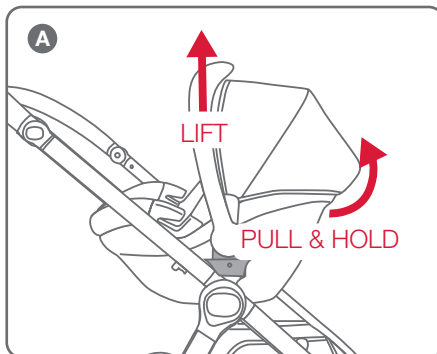
A Engage the brake. Align the Britax B Safe Series capsule with the Click & Go™ adaptors. The baby capsule must be facing the handle.



B Press firmly down on the Click & Go™ adaptors until you hear a ‘click’ which indicates the baby capsule has locked into position.

Pull up the baby capsule to ensure it is locked into the stroller frame.

REMOVING BRITAX B SAFE SERIES (FOR NZ MARKET)



A Pull and hold the release lever on the back of the car seat and lift up to remove from the stroller.

GENERAL MAINTENANCE & REPAIR

- To maintain the safety and longevity of the stroller, seek prompt repairs or replacement for bent, torn, worn, or broken parts. Do not continue to use the stroller if unsafe.
- All repairs should only be carried out by an authorised Safe-n-Sound® repairer. Only Safe-n-Sound® replacement parts should be used with the stroller. It may be unsafe to use parts supplied from another manufacturer.

GENERAL TIPS

Do not store the stroller in your car for prolonged periods of time during summer as it may lead to damage to some of the plastics components.

Do not leave the stroller in direct sunlight for extended periods of time, as colours of some fabrics may fade, and tyres may deteriorate.

Do not fold or store the stroller if damp or wet, as fabric may develop mould or mildew. Always store the stroller inside in a dry, well-ventilated area.

Do not place heavy objects on top of the stroller as it may alter the shape.

If there are compression marks on the tyres, use a domestic hair dryer to gently warm (DO NOT OVERHEAT) the tyre and the compression marks should slowly disappear.

Should you have any further questions on care & maintenance of the stroller, please contact our Consumer Service Team at:
au-support@britax.com

CLEANING

FABRICS

- Removable fabrics may be cleaned using lukewarm water and soap or mild detergent. Rinse thoroughly and allow to dry away from direct sunlight.
- Non-removable fabrics can be spot cleaned using a damp sponge and soap or mild detergent. Allow to dry completely before re-use or storage.
- Never use bleach, or abrasive cleaning products.
- DO NOT iron or dry clean.

NOTE: DO NOT place any of the stroller fabrics in the dryer. Allow to dry naturally, away from direct sunlight.

FRAME

- Remove dirt and dust away from any moving mechanism.
- Clean frame with a soft damp cloth and soap or mild detergent and allow to dry thoroughly.
- DO NOT use abrasive cleaning products as it may cause stains, discolouration or scratches to the frame.
- DO NOT soak or submerge frame in water.
- DO NOT remove, dismantle or alter any part of the stroller mechanism or brakes.

LEATHERETTE

- Spot clean with a damp soft cloth.
- DO NOT use a dripping wet cloth or wet the leatherette excessively.

WHEELS

- Remove wheels from stroller.
- Clean with damp cloth and soap or mild detergent. Use brush to remove dirt and mud build up around the tyre. Allow to dry thoroughly before placing wheels back on the frame.
- If necessary lubricate wheel shaft with a small amount of lubricant before placing into the stroller.
- Ensure the stroller is cleaned thoroughly after using it on the beach as sand and salt can damage stroller mechanism, wheel assembly, causing premature wear and corrosion.

PLEASE NOTE

Our product warranty does not cover any rust to the rivets or screws, if you are caught in the rain or at the beach always thoroughly dry the frame to avoid any rust damage.

Just like servicing your car or bicycle, prams and strollers also need **regular maintenance checks**. These checks can improve product performance, extend the life of your stroller and help to provide you and your children a safe and smooth journey.



We recommend servicing your stroller every 6 months and completing an inspection once a month. To prolong the life of your stroller, a regular maintenance should be performed.

5 STEP CHECK LIST

- 1 INSPECT SAFETY DEVICES** tether strap, frame lock, harness, buckle and brakes, and ensure all are in working order and free from dirt, sand, and debris.
- 2 INSPECT** all connecting rivets and screws are secure.
- 3 MAKE SURE FOLDING JOINTS** are free of dirt, dust, and debris by cleaning with a damp cloth, allow to dry and lightly spray with a dry silicon lubricant. Please carefully read the lubricant instructions prior to use.
- 4 REMOVE WHEELS** and wipe clean with a damp cloth to remove any dirt, sand or debris. Allow to dry and lightly spray the wheel pivot pin with a dry silicon lubricant to keep the wheels moving smoothly. Please carefully read the lubricant instructions prior to use.
- 5 ENSURE WHEN FOLDING AND STORING** to wipe down your stroller frame and allow to dry before storing in a dry place without direct sunlight.



Did you know?

Registering your product online simplifies proof of purchase in the event of a warranty claim.

Head to our website to fill out the product registration form:
britax.com.au

MAKING A WARRANTY CLAIM

Your rights under a **Britax** company warranty are separate from and independent of your rights under the statutory consumer guarantees. What you need to do to enforce your rights under a statutory consumer guarantee is set out in the **Australian Competition and Consumer Commission's Consumer Guarantees - A Guide for Consumers**.

To make a claim under a Britax company warranty, please contact our customer service team on:

Australia: 1300 303 330

New Zealand: 0508 688 822

or alternatively by email at:

Australia: au-support@britax.com

New Zealand: nzoffice@britax.com

You will be required to:

- Return the product to the place of purchase or to a designated repair agent;
- Present your receipt as proof of purchase;
- Identify the defect in the product; and
- Present the product to Britax for inspection on request.

Britax will advise you whether the product is covered by the **Britax** company warranty. **Britax's** decision of whether a product is covered by a **Britax** company warranty is final. **Britax** will act reasonably when determining whether a product is covered by a company warranty.

AUSTRALIAN CONSUMER LAW

On all of our goods, you have the benefit of a statutory consumer guarantee. In summary, goods are guaranteed to be of “acceptable quality” (fit for purpose), goods are guaranteed to match any sample against which they are sold. These consumer guarantees are provided for by the Australian Consumer Law and, if you believe any one of these guarantees is not satisfied by a Britax product, you have rights under the Australian Consumer law to enforce that guarantee.

Your rights under the statutory consumer guarantees are set out in the **Australian Competition and Consumer Commission’s Consumer Guarantees - A Guide for Consumers**.

In addition to the statutory consumer guarantees, **Britax** offers its own company warranty on all of its products. You therefore have the option of seeking redress for defective or faulty product either under the **Britax** company warranty or the statutory guarantees.

After the **Britax** company warranty expires, you still have your rights under the statutory consumer guarantees.

Depending on the product involved, the **Britax** company warranty on the following page applies:

Safe-n-Sound® WARRANTY

Safe-n-Sound® products are covered by this company warranty against faulty materials and workmanship (normal wear and tear excluded) that affects the normal operation of your **Safe-n-Sound®** product. In the unlikely event that you find that your **Safe-n-Sound®** product does not satisfy this warranty, **Britax** will (at its option) repair or replace that product within a reasonable period of you making a claim in accordance with this policy.

In the event that a replacement product is no longer available, **Britax** reserves the right to provide what it considers to be a suitable alternative.

For this company warranty to apply, you must make an application before the expiration of the following periods from date of purchase*.

This company warranty does not apply to second hand or after market goods or goods used for rental, hire or other commercial purposes or to any claim where the damage or fault is, in whole or part, the result of incorrect installation, mistreatment, intentional damage, any use other than use in normal conditions or any use otherwise than in accordance with the instruction manual for that product.

Please read your instruction manual carefully before using any of our products.

INTERNATIONAL WARRANTY

Britax products are available through a network of retailers in Australia and New Zealand. If you are an international customer we do not offer a warranty service outside of these regions.

THIS PRODUCT IS NOT INTENDED FOR COMMERCIAL USE

In our constant pursuit of excellence we may alter this product and specification without notice. This product may be covered by Australian and International patents and designs or pending applications. Safe-n-Sound® is a registered trademark and all Safe-n-Sound® model names are trademarks of Britax Childcare Pty Ltd.

This product is designed to comply with: **"Australian and New Zealand standard AS/NZS 2088:2013
"Prams and Strollers - Safety Requirements"**

AUSTRALIA

Britax Childcare Pty. Ltd.
A.B.N 55 006 773 600

Head office and registered address:

Level 4, 650 Lorimer Street
Port Melbourne, VIC, 3207

P.O. Box 5119
Garden City, VIC, 3207

Customer Service 1300 303 330

Email au-support@britax.com

britax.com.au

NEW ZEALAND

Britax Childcare (NZ) Ltd.

Customer Service 0508 688 822

Email nzoffice@britax.com

britax.com.nz

INTERNATIONAL ENQUIRIES

Contact your local Distributor