



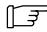



**All Terrain And Flat Terrain Running Gear For Gas And Diesel (195 326, 195 328, 195 327, And 195 366) And Protective Cage 195 331 For Gas And 300 052 For Diesel**

	<b>DANGER!</b> – Indicates a hazardous situation which, if not avoided, will result in death or serious injury. The possible hazards are shown in the adjoining symbols or explained in the text.		Beware of electric shock from wiring. Stop engine and disconnect negative (-) cable from battery before installing this kit. Reinstall all panels and covers.
	Indicates a hazardous situation which, if not avoided, could result in death or serious injury. The possible hazards are shown in the adjoining symbols or explained in the text.		Falling equipment can cause serious personal injury and equipment damage. Use lifting eye to lift unit and properly installed accessories only, NOT gas cylinders. Do not exceed maximum lifting eye weight rating. Lift and support only with proper equipment and correct procedures.
<b>NOTICE</b> 	Indicates statements not related to personal injury.		Wear safety glasses with side shields.
	Indicates special instructions.		

<b>Running Gear</b>	<b>Page</b>
Assembling Of Flat Terrain Running Gear (195 327)	2
Assembling Of All Terrain Running Gear (195 326)	3
Assembly Of Flat Terrain Running Gear With Protective Cage (195 366)	4
Assembly Of All Terrain Running Gear With Protective Cage (195 328)	5
Assembling Protective Cage (195 331 And 300 052)	6

# 1. Assembling Of Flat Terrain Running Gear (195 327)



Item No.	Part No.	Description (Qty)
1	220263	Assy, Handle Running Gear (1)
2	108940	Screw, 250-20x .75 Hexwhd.61d Gr5 Pld (6)
3	220375	Bracket, Crossmember (1)
4	604224	Screw, 250-20x .75 Hexwhd.50d Stl Pld Slfmg Tap-rw (6)
5	601965	Screw, 375-16x1.00 Hex Hd-pln Gr5 Pld (12)
6	220259	Rail, Base Support Rh (1)
7	167788	Nut, 375-16 .56hex .34h Stl Pld Sem Cone Wshr.88d (12)
8	220257	Axle, Wheel (Large) (1)
9	220710	Wheel, Rbr Tire 14.500 Od X 4.750 Wide X .750 Bore (2)
10	121614	Ring, Rtnng Ext .750 Shaft X .085 Thk E Style Pld (2)
11	220267	Bracket, Mtg Caster (1)
12	168247	Caster, Swvl 5.00 In Rubber X 2.000 In Wide (2)
13	220258	Rail, Base Support Lh (1)
14	152461	Nut, 250-20 .44hex .23h Stl Pld Sem Cone Wshr.65d (2)
15	602250	Washer, Flat .812idx1.469odx.134t Stl Pld Ansi.750 (2)

Be sure to provide model when ordering replacement parts.

### Assembly:

Assemble casters and caster mounting bracket.

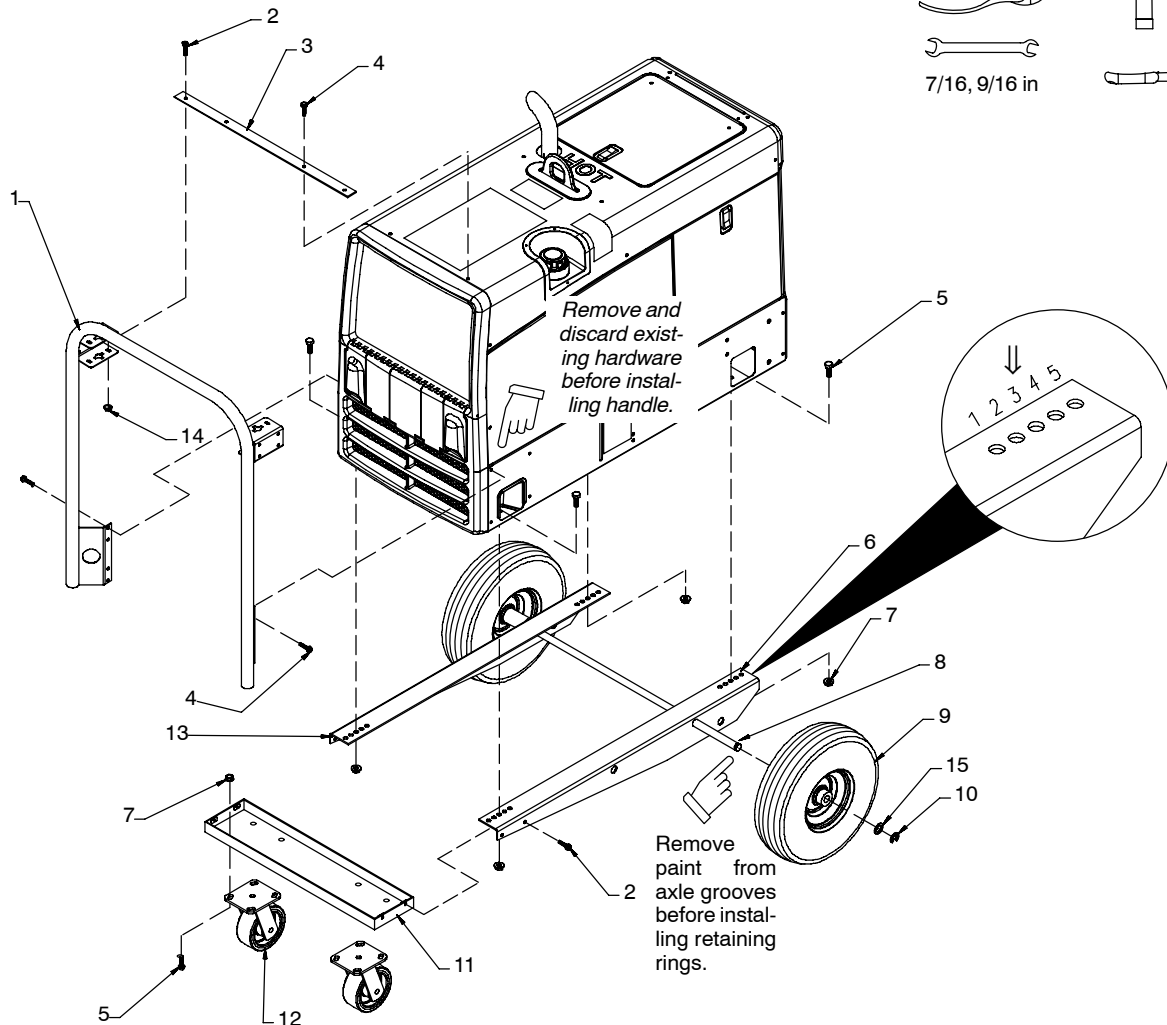
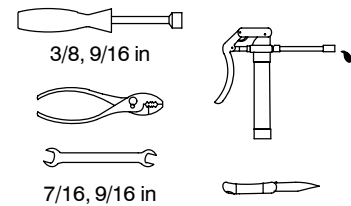
Assemble base rails, axle, and wheels (valve stems out).

☞ *Install onto welding generator using mounting hole 3 in rails. Adjust to achieve proper balance for application and accessories.*

Install caster mounting bracket onto base rails.

Mount handles. Do not tighten hardware. Install crossmember and tighten all hardware.

### Tools Needed:



## 2. Assembling Of All Terrain Running Gear (195 326)



Item No.	Part No.	Description (Qty)
1	220263	Assy, Handle Running Gear (1)
2	108940	Screw, 250-20x .75 Hexwhd.61d Gr5 Pld (2)
3	220375	Bracket, Crossmember (1)
4	604224	Screw, 250-20 x .75 Hexwhd .50d Stl Pld Slfmg Tap-rw (6)
5	601965	Screw, 375-16 x 1.00 Hex Hd-pln Gr5 Pld (4)
6	167788	Nut, 375-16 .56hex .34h Stl Pld Sem Cone Wshr .88d (4)
7	220259	Rail, Base Support Rh (1)
8	135418	Axle, Running Gear .750 Dia X 25.745 (1)
9	602250	Washer, Flat .812id x 1.469odx.134t Stl Pld Ansi .750 (4)
10	220709	Wheel, Rbr Tire 10.250 Od X 3.125 Wide X .750 Bore (2)
11	121614	Ring, Rtnng Ext .750 Shaft X .085 Thk E Style Pld (4)
12	220710	Wheel, Rbr Tire 14.500 Od X 4.750 Wide X .750 Bore (2)
13	220257	Axle, Wheel (Large) (1)
14	220258	Rail, Base Support Lh (1)
15	152461	Nut, 250-20 .44hex .23h Stl Pld Sem Cone Wshr .65d (2)
16	197930	Label, Warning Do Not Weld On Base (2)

Be sure to provide model when ordering replacement parts.

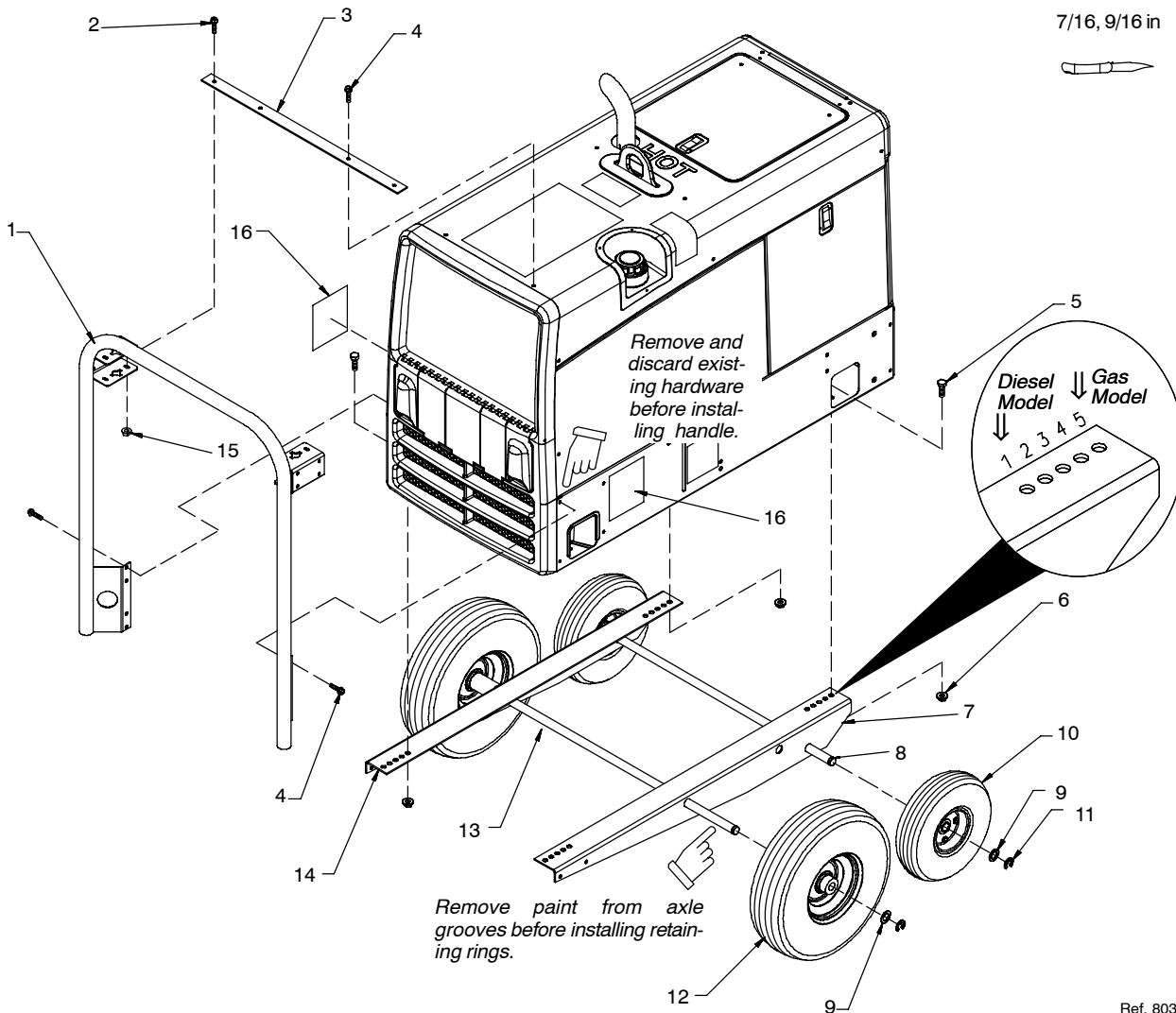
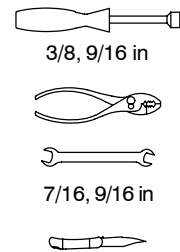
### Assembly:

Assemble base rails, axles, and wheels (valve stems out).

☞ Install onto generator using rail mounting hole 5 for gas models or 1 for diesel models. Adjust to achieve proper balance for application and accessories.

Mount handles. Do not tighten hardware. Install crossmember and tighten all hardware.

### Tools Needed:



Ref. 803 903-E

### 3. Assembly Of Flat Terrain Running Gear With Protective Cage (195 366)



Item No.	Part No.	Description (Qty)
1	220260	Rail, Side (2)
2	108940	Screw, 250-20 x .75 Hexwhd.61d Gr5 Pld (8)
3	220266	Assy, Cable Holder (4)
4	220263	Assy, Handle Running Gear (2)
5	601965	Screw, 375-16 x 1.00 Hex Hd-pln Gr5 Pld (12)
6	220259	Rail, Base Support Rh (1)
7	167788	Nut, 375-16 .56hex .34h Stl Pld Sem Cone Wshr .88d (12)
8	220257	Axle, Wheel (Large) (1)
9	220710	Wheel, Rbr Tire 14.500 Od X 4.750 Wide X .750 Bore (2)
10	121614	Ring, Rtnng Ext .750 Shaft X .085 Thk E Style Pld (2)
11	108940	Screw, 250-20 x .75 Hexwhd .61d Gr5 Pld (4)
12	220267	Bracket, Mtg Caster (1)
13	168247	Caster, Swvl 5.00 In Rubber X 2.000 In Wide (2)
14	220258	Rail, Base Support Lh (1)
15	604224	Screw, 250-20 x .75 Hexwhd .50d Stl Pld Slffmg Tap-rw (8)
16	111998	Pin, Cotter Hair .120 Dia X 2.375lg X .500 Shaft (4)
17	152461	Nut, 250-20 .44hex .23h Stl Pld Sem Cone Wshr .65d (8)
18	602250	Washer, Flat .812id x 1.469od x .134t Stl Pld Ansi .750 (2)

Be sure to provide model when ordering replacement parts.

#### Assembly:

Assemble casters and caster mounting bracket.

Assemble base rails, axle, and wheels (valve stems out).

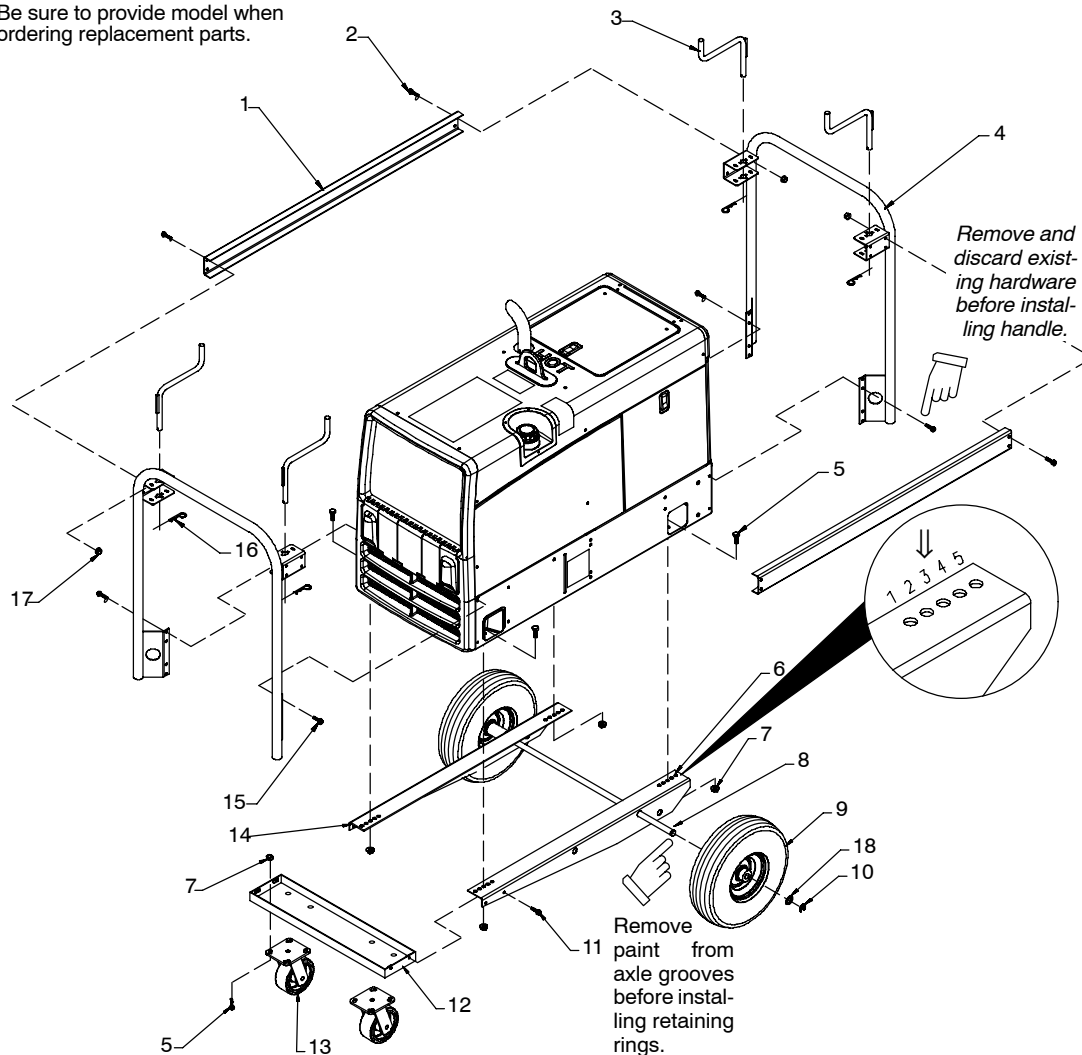
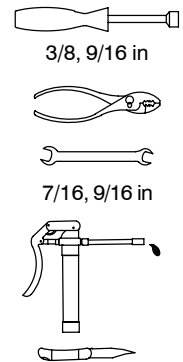
☞ Install onto generator using mounting hole 3 in rails. Adjust to achieve proper balance for application and accessories.

Install caster mounting bracket onto base rails.

Mount handles. Do not tighten hardware. Install side rails and tighten all hardware.

Install cable holders.

#### Tools Needed:



## 4. Assembly Of All Terrain Running Gear With Protective Cage (195 328)



Item No.	Part No.	Description (Qty)
1	220260	Rail, Side (2)
2	108940	Screw, 250-20 x .75 Hexwhd .61d Gr5 Pld (8)
3	220266	Assy, Cable Holder (4)
4	220263	Assy, Handle Running Gear (2)
5	601965	Screw, 375-16 x 1.00 Hex Hd-Pin Gr5 Pld (4)
6	220259	Rail, Base Support Rh (1)
7	167788	Nut, 375-16 .56hex .34h Stl Pld Sem Cone Wshr .88d (4)
8	135418	Axle, Running Gear .750 Dia X 25.745 (1)
9	602250	Washer, Flat .812id x 1.469od x .134t Stl Pld Ansi .750 (4)
10	220709	Wheel, Rbr Tire 10.250 Od X 3.125 Wide X .750 Bore (2)
11	121614	Ring, Rtnng Ext .750 Shaft X .085 Thk E Style Pld (4)
12	220710	Wheel, Rbr Tire 14.500 Od X 4.750 Wide X .750 Bore (2)
13	220257	Axle, Wheel (Large) (1)
14	220258	Rail, Base Support Lh (1)
15	604224	Screw, 250-20 x .75 Hexwhd .50d Stl Pld Slffmg Tap-Rw (8)
16	111998	Pin, Cotter Hair .120 Dia X 2.375lg X .500 Shaft (4)
17	152461	Nut, 250-20 .44hex .23h Stl Pld Sem Cone Wshr .65d (8)
18	197930	Label, Warning Do Not Weld On Base (2)

Be sure to provide model when ordering replacement parts.

### Assembly:

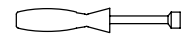
Assemble base rails, axles, and wheels (valve stems out).

☞ Install onto welding generator. Use mounting hole 5 in rails. Adjust to achieve proper balance for application and accessories.

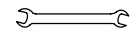
Mount handles. Do not tighten hardware. Install side rails and tighten all hardware.

Install cable holders.

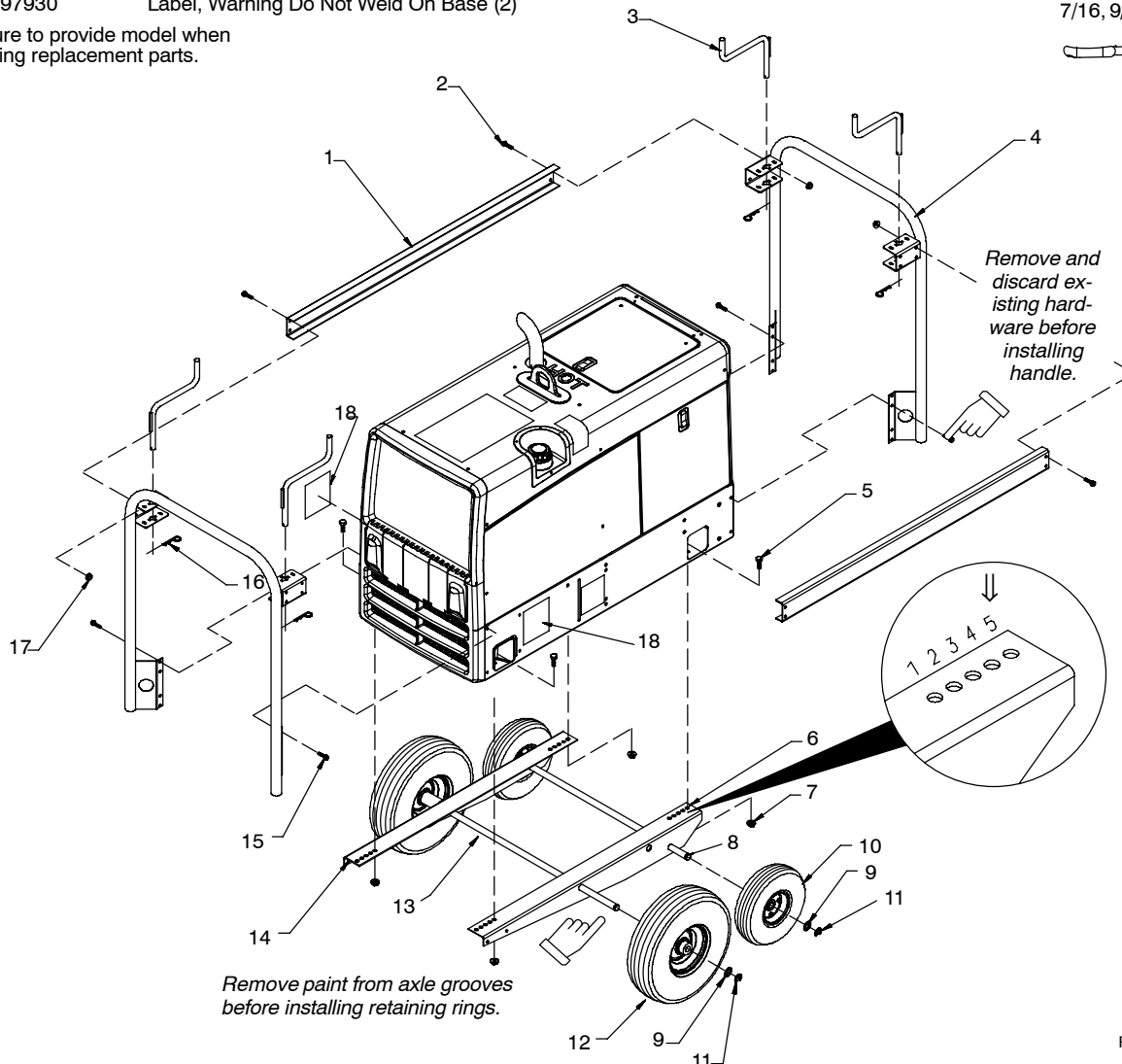
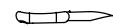
### Tools Needed:



3/8, 9/16 in



7/16, 9/16 in



Ref. 803 905-E

## 5. Assembling Protective Cage (195 331 And 300 052)



Item No.	Part No.	Description (Qty)
----------	----------	-------------------

1	220260	Rail, Side (2) (Gas Models)
1	225269	Rail, Side (2) (Diesel Models)
2	108940	Screw, 250-20x .75 Hexwhd.61d Gr5 Pld (8)
3	220266	Assy, Cable Holder (4)
4	220263	Assy, Handle Running Gear (2)
5	604224	Screw, 250-20x .75 Hexwhd.50d Stl Pld Slfmg Tap-rw (8)
6	111998	Pin, Cotter Hair .120 Dia X 2.375lg X .500 Shaft (4)
7	152461	Nut, 250-20 .44hex .23h Stl Pld Sem Cone Wshr.65d (8)

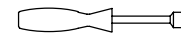
Be sure to provide model when ordering replacement parts.

### Assembly:

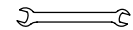
Mount handles. Do not tighten hardware. Install side rails and tighten all hardware.

Install cable holders.

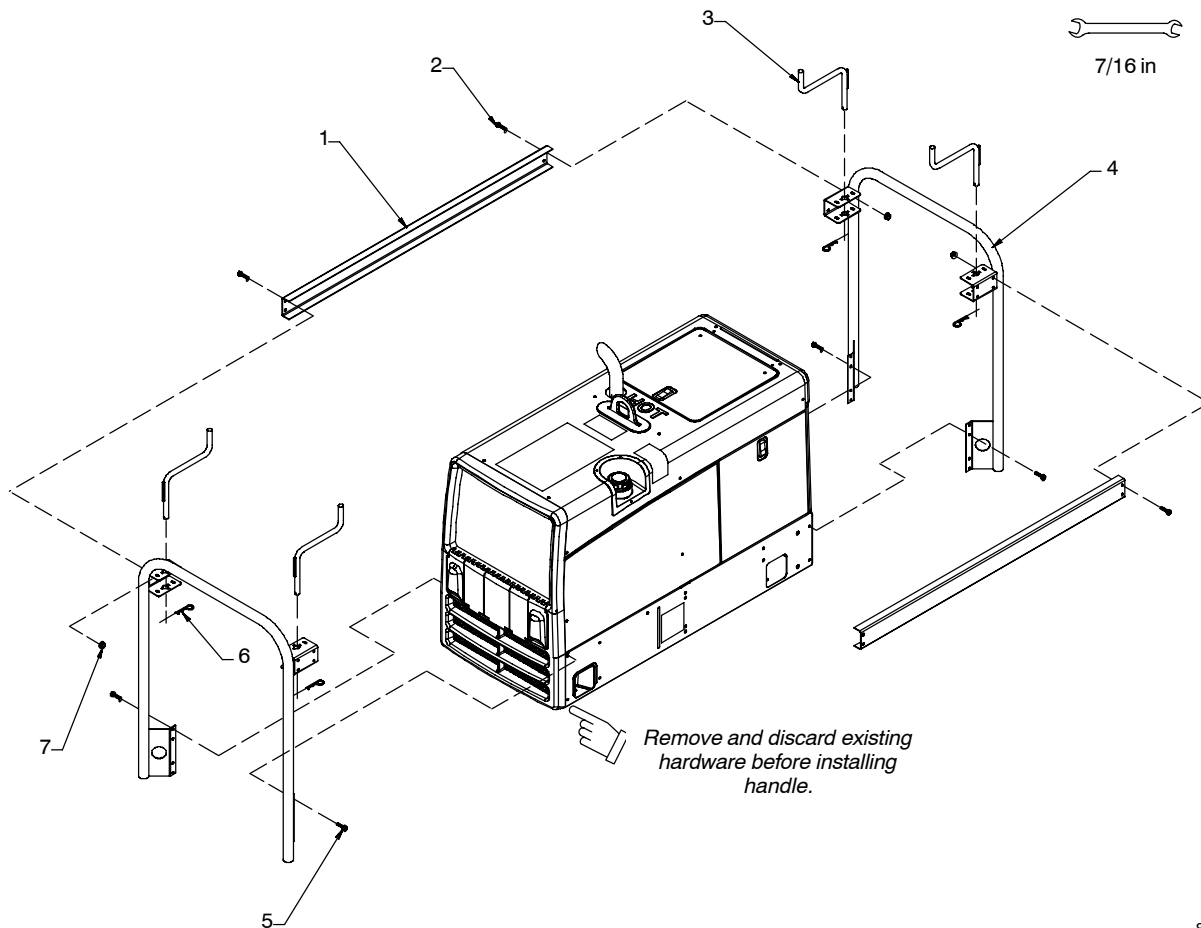
### Tools Needed:



3/8 in



7/16 in



803 929-B