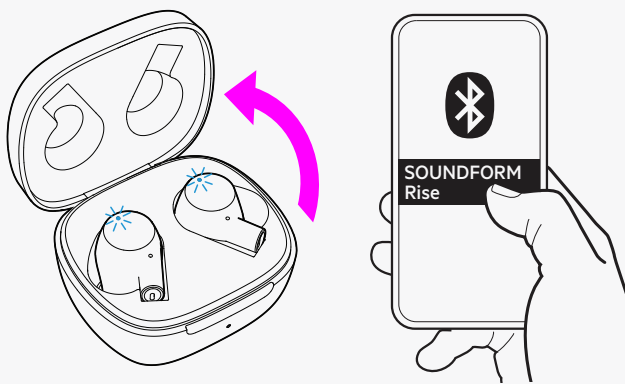




SOUNDFORM™ Rise True Wireless Earbuds



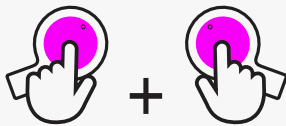
A Initial pairing

Step 1: Open the charging case of your earbuds, and the earbud's white light will begin to blink. The blue light will show once the earbuds are ready to pair.

Step 2: On your mobile device, turn ON the Bluetooth to begin searching for nearby devices.

NOTE: The steps in enabling your Bluetooth may vary depending on your device's operating system.

Step 3: When your earbuds are detected, it will show as SOUNDFORM Rise as a device to pair. Tap on the name to complete the pairing.



B Manual pairing

Remove the earbuds from the case. Then, press and hold the touch-sensitive buttons on the earbuds for 3 seconds. The status light on the earbuds will blink white and blue when they are ready to be paired.



All Day Comfort

Our True Wireless Earbuds come with three sizes (S/M/L) of silicone ear tips, providing all-day comfort and noise isolation with its sealed in-ear fit.

How to use the touch controls on the SOUNDFORM Rise



Audio Playback

Control	Left Earbud	Right Earbud
Volume up (+)		Tap one time
Volume down (-)	Tap one time	
Pause / Resume playback	Tap two times	Tap two times
Next track		Tap three times
Previous track	Tap three times	

Call Handling

Control	Left Earbud	Right Earbud
Accept / End call	Tap two times	Tap two times
Reject call	Hold for 2 seconds	Hold for 2 seconds

Virtual Assistants

Control	Left Earbud	Right Earbud
Activate virtual assistant	Hold for 2 seconds	Hold for 2 seconds

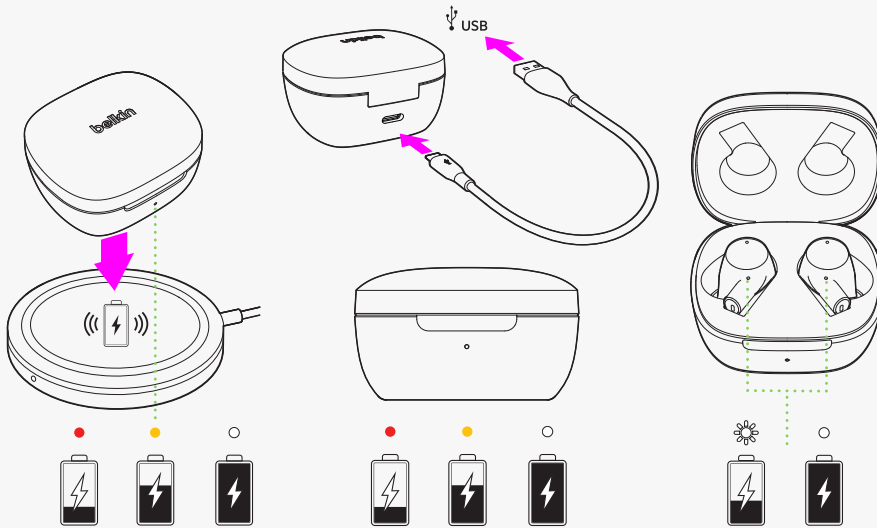
SOUNDFORM™ Rise True Wireless Earbuds



How to charge the case and the earbuds

Case: The SOUNDFORM Rise case can be charged wirelessly using a standard Qi wireless charging pad or via the USB-C port on the back of the case.

Earbuds: The SOUNDFORM Rise earbuds can be charged by placing them in the charging case. They can either charge directly from the battery in the case or can be charged while also charging the case.



How to reset the SOUNDFORM Rise True Wireless Earbuds

