

## PRO LINK

### INTRODUCTION

This quick guide explains the basic functions of the PRO LINK fitting device and how to set up PRO LINK in COMPASS GPS. The quick guide also explains some of the special scenarios/functions that may be relevant in daily use.

PRO LINK enables you to reliably fit all WidexLink hearing aids wirelessly with COMPASS GPS software.

Using the PRO LINK Connector, you can also easily fit the CIC-Micro hearing aids.

Simply attach the PRO LINK Connector to PRO LINK and you're all set.

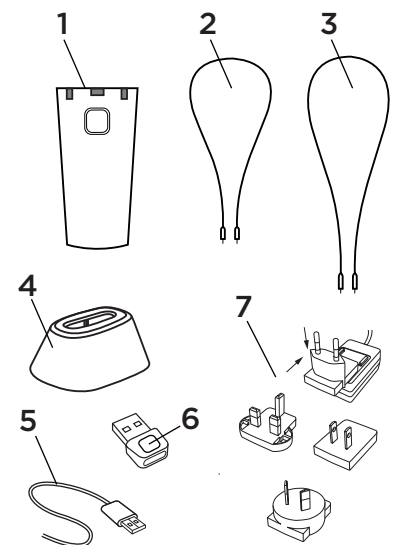
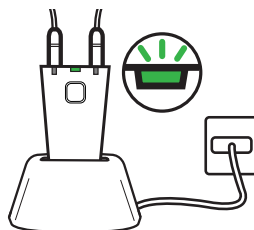
A guide in how to set-up PRO LINK Connector together with PRO LINK, can be read from page 5.



### PRODUCT OVERVIEW

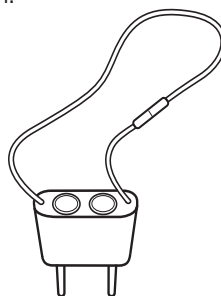
When you receive the PRO LINK box, it will contain the following item:

1. PRO LINK device
2. Neckloop (75 cm)
3. Neckloop (85 cm)
4. Docking station
5. Micro USB cable
6. Bluetooth adaptor
7. Wall charger (Country plugs)



When receiving PRO LINK Connector box, it will contain:

1. PRO LINK Connector device
2. Instruction for use



A LR44 battery is required to use the PRO LINK Connector. You can buy this type of battery in at your local supplier.

## SETTING UP **PRO LINK**

### CHARGING PRO LINK

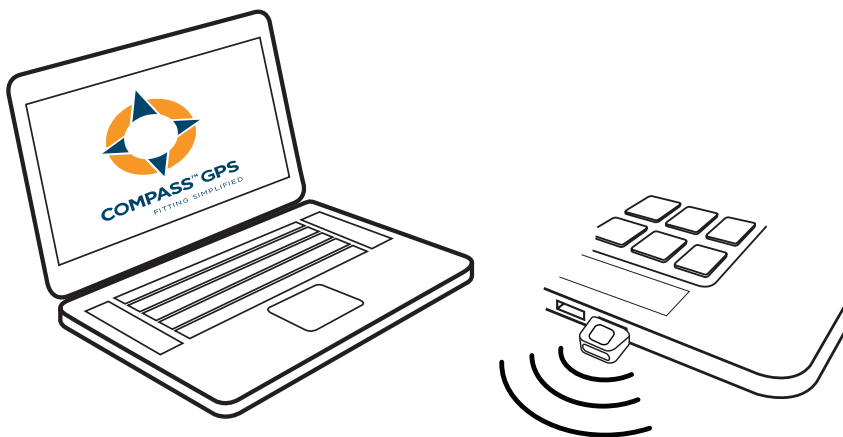
Connect the docking station to a power outlet and place PRO LINK in the docking station.

NOTE: Let the battery charge 100% before using PRO LINK for the first time, e.g., overnight.

### CONNECTING PRO LINK TO A COMPUTER

Connect your PRO LINK to your computer using the Bluetooth adaptor by doing as follows:

1. Plug the Bluetooth adaptor into a USB slot on the computer
2. If the computer is not already on, turn it on
3. Turn on PRO LINK, and it will automatically pair with the Bluetooth adaptor

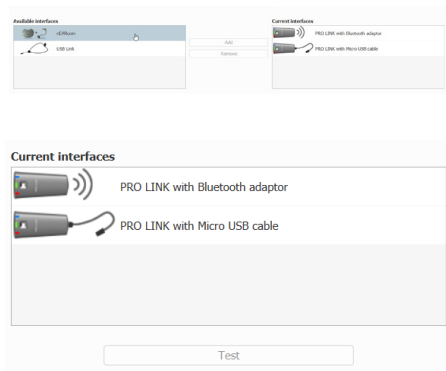


#### NOTE

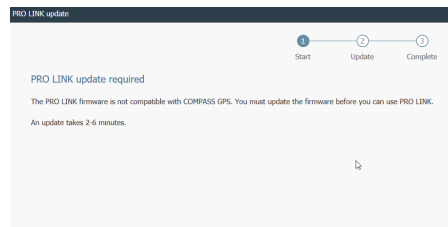
When connecting PRO LINK with the PC and COMPASS GPS, always use the PRO LINK-specific Bluetooth adaptor or the micro USB cable that comes with PRO LINK.

## EASY SET-UP IN COMPASS GPS

1. Start COMPASS GPS
2. In session start, go to "COMPASS" set-up
3. Click on the tab "Interface"
4. Choose PRO LINK with Bluetooth adaptor or PRO LINK with micro USB cable, or both, and select "Add" to move to the current "Interfaces" list:
  - Choosing PRO LINK with Bluetooth adaptor will enable wireless connection via Bluetooth.
  - Choosing PRO LINK with micro USB cable will disable Bluetooth. However, if the Bluetooth option is still selected, and you connect PRO LINK to the computer via USB cable, this will enable PRO LINK to be charged during use.



5. Click on the "Test" button to ensure PRO LINK is connected
6. If a new firmware update for PRO LINK is available, a prompt will appear to allow you to update PRO LINK. Follow directions on the screen\*.



- As of GPS 3.0 SP1/firmware version 1.3.4, it will be possible to update the PRO LINK firmware wirelessly via the Bluetooth connection. (No longer necessary to connect PRO LINK to GPS via USB cable.)
  - WIRED update: approximately 3 minutes
  - WIRELESS update: approximately 6 minutes
7. You are now ready to fit Widex hearing aids using PRO LINK with COMPASS GPS

\* The pop-up will appear only if required, when clicking either the "Test" button in the interface selection menu, or the "Connect" button at the top of the COMPASS GPS screen

## HOW TO USE PRO LINK

1. Remove PRO LINK from the docking station, and place it around client's neck
2. Close the neckloop by inserting the neckloop connector into the jack port
3. Ensure hearing aids are on and within the loop
4. Turn on PRO LINK by pressing the button on the device to establish connection to COMPASS GPS via Bluetooth
5. Use the dropdown menu next to the "Connect" button (see image below) in COMPASS GPS to select PRO LINK with Bluetooth adaptor or PRO LINK with micro USB Cable, to match the chosen configuration
6. Connect to the hearing aids by clicking the "Connect" button in COMPASS GPS

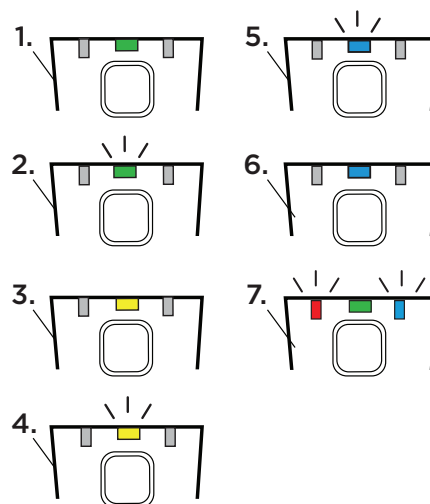


7. Proceed with fitting
8. When fitting is complete, disconnect from COMPASS GPS
9. Open the neckloop on PRO LINK to remove from client's neck
10. Reattach neckloop and place PRO LINK in the docking station to charge it

## HOW DOES PRO LINK WORK?

This section explains the LED indicators available on PRO LINK and what they mean:

1. Solid green light: PRO LINK is on and the battery charged
2. Blinking green light: PRO LINK is charging
3. Solid yellow light: The battery is running low
4. Blinking yellow light: The battery is very low
5. Blinking blue light: PRO LINK is in pairing mode
6. Solid blue light: PRO LINK is connected via Bluetooth (only shown shortly after PRO LINK has been connected)
7. PRO LINK is communicating with the hearing aids

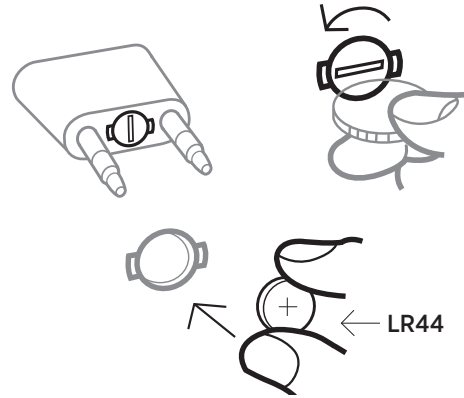


## SETTING UP **PRO LINK CONNECTOR**

### **First-time use:**

Inserting the battery (Lithium “LR44”):

1. Use a coin or screwdriver to remove the lid on the battery compartment
2. Be sure to insert the battery as illustrated. The plus (+) sign must face upwards
3. Reattach the battery lid



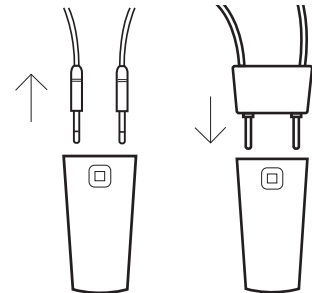
### **Checking the battery:**

1. To check if the battery has enough power to make a complete fitting, press the “Test” button on the back of the PRO LINK Connector (see illustration)
2. The LED indicator must show a green light to indicate that the power level is OK

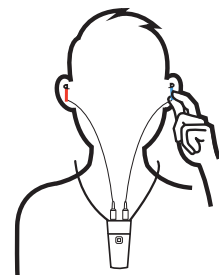


### **Daily use:**

1. Remove PRO LINK from the docking station
2. Remove the PRO LINK neckloop, attach the PRO LINK Connector, and turn on
3. Remove battery door from CIC-Micro and insert programming cable



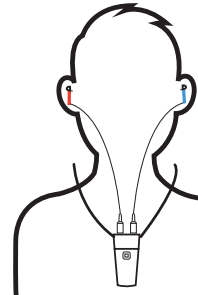
4. Place the PRO LINK Connector around the client's neck and insert hearing aids in the client's ears



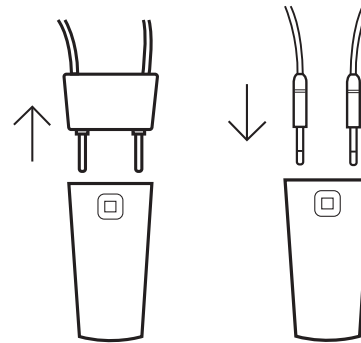
5. Connect programming cable to the PRO LINK Connector
6. Make sure there is a connection between PRO LINK and Bluetooth adaptor/USB cable (depending on configuration)



7. Proceed with fitting



8. When fitting is finished, remove PRO LINK and PRO LINK connector from client's neck
9. Remove PRO LINK Connector from PRO LINK



10. Place PRO LINK Connector back into its box for safekeeping
11. Reattach neckloop to PRO LINK, and place PRO LINK in docking station

## Q&A PRO LINK

**Q:** PRO LINK is out of power, and I need it to fit a client with a new hearing aid. What do I do?

**A:** Use the USB cable included to connect PRO LINK directly to a USB port in the PC. This will allow PRO LINK to charge while at the same time connecting COMPASS GPS with the hearing aids for fitting. After the fitting, disconnect the USB cable and place the PRO LINK in the docking station to ensure it is charged for the next fitting.

**Q:** My clinic does not allow the use of Bluetooth. What do I do?

**A:** Use the micro USB cable included to connect PRO LINK directly to a USB port in the PC. This will allow the device to connect to COMPASS GPS without enabling Bluetooth.

**Q:** I have trouble getting the neckloop around the neck of the patient. The neckloop is too short. What do I do?

**A:** Disconnect the 75 cm neckloop from the device at both ends and replace it with the 85 cm neckloop included in the packaging.

**Q:** What happens if the Bluetooth adaptor is lost or defective?

**A:** Order a new Bluetooth adaptor from your local Widex supplier and pair it with your PRO LINK device upon receipt. While waiting for the new Bluetooth adaptor to arrive, use the USB cable included to connect to the PC. Remember to select this mode in the COMPASS set-up menu.

**Q:** How do I pair PRO LINK with a new Bluetooth adaptor?

**A:** Press and hold the button on the Bluetooth adaptor and the center button on PRO LINK to start the Bluetooth search and pair mode. The blue light will start blinking. Once connected successfully, there will be a solid blue light on the Bluetooth adaptor.

**Q:** My patient is wearing a pacemaker; can I still use PRO LINK?

**A:** PRO LINK is very unlikely to interfere with other electronic devices, including medical implants like pacemakers. However, if any abnormal situation is observed, do not use PRO LINK; instead, please contact your doctor or pacemaker manufacturer and Widex representative immediately.

**Q:** Can I use the same PRO LINK for two computers?

**A:** You can always use the PRO LINK in Bluetooth mode if you make sure the Bluetooth adaptor and PRO LINK follow each other from one PC to another. If you do not want to remove the Bluetooth adaptor from the original computer, but want to use PRO LINK on a different computer, you can also use the PRO LINK device with the wired connection for the secondary PC.

**Q:** Can PRO LINK be used in REM/test box verification systems? (For example: coupler-based verification for pediatric hearing aids.)

**A:** We have tested PRO LINK in the Verifit and Affinity REM systems, and it works.

**Q:** Can I still use my old fitting interface/device?

**A:** If you have been using USB-Link (or nEARcom) as your fitting device for Widex products in the past, you can still use them. Select the programming interfaces that you want to use in the COMPASS GPS set-up menu and select the appropriate device in the "Connect" dropdown menu when you connect to the hearing aids.

**Q:** How do I fit CIC-Micro hearing aids?

**A:** Simply attach PRO LINK Connector to PRO LINK. See separate Quick Guide for instructions.

## **Q&A** PRO LINK CONNECTOR

**Q:** The battery in the PRO LINK Connector is out of power and I do not have a replacement battery. What can I do?

**A:** Use a standard size 10 battery to complete the next fitting and replace it with the correct Lithium “LR44” battery as soon as possible, as the size 10 battery will only cover for a short amount of time.

**Q:** Which hearing aids can I use with the PRO LINK Connector?

**A:** All non-wireless hearing aids compatible with COMPASS GPS:

- DREAM CIC M
- UNIQUE CIC M
- EVOKE CIC M

**Q:** Can I leave the PRO LINK connector on PRO LINK at all times?

**A:** No. The neckloop needs to be on PRO LINK in order to program the wireless hearing aids. Thankfully, it is very easy to attach and detach the PRO LINK Connector from PRO LINK.