

# AC 800M PROFIBUS DP Configuration

System Version 5.1

Power and productivity  
for a better world™





# **AC 800M**

## **PROFIBUS DP**

### **Configuration**

**System Version 5.1**

---

## NOTICE

This document contains information about one or more ABB products and may include a description of or a reference to one or more standards that may be generally relevant to the ABB products. The presence of any such description of a standard or reference to a standard is not a representation that all of the ABB products referenced in this document support all of the features of the described or referenced standard. In order to determine the specific features supported by a particular ABB product, the reader should consult the product specifications for the particular ABB product.

ABB may have one or more patents or pending patent applications protecting the intellectual property in the ABB products described in this document.

The information in this document is subject to change without notice and should not be construed as a commitment by ABB. ABB assumes no responsibility for any errors that may appear in this document.

In no event shall ABB be liable for direct, indirect, special, incidental or consequential damages of any nature or kind arising from the use of this document, nor shall ABB be liable for incidental or consequential damages arising from use of any software or hardware described in this document.

This document and parts thereof must not be reproduced or copied without written permission from ABB, and the contents thereof must not be imparted to a third party nor used for any unauthorized purpose.

The software or hardware described in this document is furnished under a license and may be used, copied, or disclosed only in accordance with the terms of such license. This product meets the requirements specified in EMC Directive 2004/108/EC and in Low Voltage Directive 2006/95/EC.

## TRADEMARKS

All rights to copyrights, registered trademarks, and trademarks reside with their respective owners.

Copyright © 2003-2013 by ABB.  
All rights reserved.

Release: December 2013  
Document number: 3BDS009030-510 A

---

# Table of Contents

## About This User Manual

Intended User.....	10
How to Use this User Manual.....	10
User Manual Conventions .....	10
Warning, Caution, Information, and Tip Icons .....	10
Terminology.....	11
Released User Manuals and Release Notes.....	17

## Section 1 - Introduction

General Overview .....	19
------------------------	----

## Section 2 - Functional Description

PROFIBUS Basics.....	21
Basic Functions DP-V0.....	21
Cyclic Data Communication .....	21
Diagnostics .....	22
DP Master Class 1 (DPM1) and Class 2 (DPM2).....	23
System Behavior .....	23
Sync and Freeze Mode.....	24
Monitoring the DP-V0 Communication.....	25
Multi Master Systems .....	25
Version DP-V1 .....	26
Acyclic Data Communication .....	26
Alarms and Status Messages .....	26
Redundancy .....	27
Overview .....	27

Master Redundancy .....	27
Slave Redundancy .....	28
Line Redundancy .....	29
Status Handling .....	30
Status Handling for DP-V1 Master Unit.....	30
Status Handling for Slave Units.....	35
Alarms and Events .....	36
Hot Swap .....	36
Hot Configuration in Run (HCIR) .....	36
 <b>Section 3 - Configuration</b>	
Hardware Library .....	39
Insert PROFIBUS Master Unit.....	39
Add Redundancy for Master Unit .....	41
Delete Redundancy for Master Unit.....	42
Configure the PROFIBUS Master Unit.....	42
HW Editor.....	42
Settings Tab .....	43
Connection Tab.....	49
Unit Status Tab.....	50
Automatic Calculation of PROFIBUS Master Parameter.....	50
Default Values.....	51
Special Settings.....	52
Insert a Slave Unit .....	53
Add Redundancy for Slave Unit .....	56
Delete Redundancy for Slave Unit.....	57
Insert a new Slave Type.....	57
Configuration of PA-Devices .....	59
Connecting PA-Devices via Linking Device LD 800P and SK3.....	59
PROFIBUS Power Hub SK3 .....	59
Configuration of PROFIBUS Slave Address .....	60
Configuration via DP-V1 .....	61
Device Management PROFIBUS & HART.....	62

---

## Section 4 - Download and Online Mode

Preconditions .....	65
Downloading .....	65
Online Changes .....	65
Automatic Calculation of PROFIBUS Master Parameters .....	66
Logfile .....	68
Online Data.....	69
Behavior of I/O and Communication .....	70
Insertion and deletion of I/O units .....	70
Connection Error .....	70
System Error.....	70

## Section 5 - Web Interface

How to use the Web Interface.....	73
SetAddress .....	77
LiveList.....	78
CycleTime.....	79
GeneralStatus.....	80
MasterSettings .....	81
SlaveDiagnosis .....	81
SlaveConfig .....	83
Slave-I/O.....	85
FirmwareInfo .....	86
HardwareInfo.....	86
Red.Switchover.....	87
Errormemory .....	88
Debug, DMJ Buffer .....	89
Service File.....	90
Change Password.....	91

## Index

## Revision History

*Table of Contents*

---

Introduction ..... 95  
Revision History ..... 95  
Updates in Revision Index - ..... 95  
Updates in Revision Index A..... 96



---

# About This User Manual



Any security measures described in this User Manual, for example, for user access, password security, network security, firewalls, virus protection, etc., represent possible steps that a user of an 800xA System may want to consider based on a risk assessment for a particular application and installation. This risk assessment, as well as the proper implementation, configuration, installation, operation, administration, and maintenance of all relevant security related equipment, software, and procedures, are the responsibility of the user of the 800xA System.

This user manual describes the configuration of the PROFIBUS DP-V1 in the 800xA control system using the communication interface CI854/CI854A.



This manual does not provide any information on the use and configuration of the PROFIBUS bus communication interface module CI851. This information is found in the online help of Control Builder M.

It also does not provide any information about installing the PROFIBUS network. This information is provided in the *AC 800M PROFIBUS DP Installation manual (3BDS009029\*)* for PROFIBUS DP-V1.

The main areas covered in this user manual are:

- PROFIBUS functionalities available with CI854/CI854A,
- Hardware configuration with the Control Builder M,
- Supervision and status visualization of the PROFIBUS.

The reader of this manual is expected to have good knowledge of the 800xA control system and the PROFIBUS in general.

This user manual is not the only source of instruction for PROFIBUS. ABB offers training courses for those who use ABB control systems.

## Intended User

This manual is intended for application engineers and for engineers who are planning the design of a PROFIBUS system. The reader should be familiar with Control IT for AC 800M products and the programming tool, Control Builder M. Also the reader should be familiar with the hardware and software functionality of the 800xA system products. Apart from this, the user should have a good PROFIBUS knowledge.

## How to Use this User Manual

[Section 1, Introduction](#) gives a brief overview of PROFIBUS and how it is integrated in the controllers.

[Section 2, Functional Description](#) provides detailed information on the PROFIBUS implementation.

[Section 3, Configuration](#) describes the configuration of PROFIBUS with the Control Builder M.

[Section 4, Download and Online Mode](#) describes the download procedure and the system behavior in case of an error.

[Section 5, Web Interface](#) describes how to get detailed diagnostic information from the system in case of a serious PROFIBUS error and how to set the slave address for PA devices.

For a list of documentation related to the products described in this user manual, see [Released User Manuals and Release Notes](#) on page 17.

## User Manual Conventions

Microsoft Windows conventions are normally used for the standard presentation of material when entering text, key sequences, prompts, messages, menu items, screen elements, etc.

## Warning, Caution, Information, and Tip Icons

This User Manual includes Warning, Caution, and Information where appropriate to point out safety related or other important information. It also includes Tip to point

out useful hints to the reader. The corresponding symbols should be interpreted as follows:



Electrical warning icon indicates the presence of a hazard that could result in *electrical shock*.



Warning icon indicates the presence of a hazard that could result in *personal injury*.



Caution icon indicates important information or warning related to the concept discussed in the text. It might indicate the presence of a hazard that could result in *corruption of software or damage to equipment/property*.



Information icon alerts the reader to pertinent facts and conditions.



Tip icon indicates advice on, for example, how to design your project or how to use a certain function

Although Warning hazards are related to personal injury, and Caution hazards are associated with equipment or property damage, it should be understood that operation of damaged equipment could, under certain operational conditions, result in degraded process performance leading to personal injury or death. Therefore, fully comply with all Warning and Caution notices.

## Terminology

A complete and comprehensive list of Terms is included in the Industrial<sup>IT</sup> Extended Automation System 800xA, Engineering Concepts instruction (3BDS100972\*). The listing includes terms and definitions that apply to the 800xA System where the usage is different from commonly accepted industry standard definitions and definitions given in standard dictionaries such as Webster's

Dictionary of Computer Terms. Terms that uniquely apply to this User Manual are listed in the following table.

<b>Term/Acronym</b>	<b>Description</b>
AC 800M	ABB Controller 800M series, general purpose process controller series by ABB.
AC 800M Controller	Any controller constructed from the units and units connected to the AC 800M hardware platform.
Control Builder M (CBM)	The programming tool for AC 800M. Often referred to as Control Builder or CBM. Control Builder M Professional is integrated into System 800xA.
CEX-Bus	Communication Expansion Bus (for communication units).
Connector	A Connector is a coupling device used to connect the wire medium to a fieldbus device or to another segment of wire.
DIW	The Device Import Wizard is a tool provided with Control Builder M that converts GSD Files to HWD Files. This is the successor for the GSD Import Tool.
DL	The Device Library provides device object types to be installed with the Device Library Wizard.
DLW	The Device Library Wizard is a tool to install separately delivered device object types provided by the Device Library into an 800xA system.
DTM (Device Type Manager)	A DTM is a software module provided by the device vendor. It is used to establish communication and data access to the device. The DTM co-operates and exchanges data with the engineering tools via the FDT interfaces.
DPM1	DP Master Class 1. After configuring the slave the DPM1 gets into the cyclic data transmission with the slave. Via MS1 (Master Slave Class 1) connection the DPM1 can also have acyclic communication with the slave.

Term/Acronym	Description
DPM2	DP Master Class 2. The DPM2 is mainly used for DP-V1 configuration of slave devices. The acyclic communication is setup via MS2 (Master Slave Class 2) connections.
Failover	In case of an error the primary module stops working and the backup module gets active.
FCI	The Fieldbus Communication Interface (FCI) device contains the interface to the fieldbus.
FDT (Field Device Tool)	FDT defines a vendor-independent and protocol-independent interface for integrating field devices in the engineering tools of process control systems.
Fieldbus	A fieldbus is used to interconnect field devices, such as I/O modules, smart sensors and actuators, variable speed drives, PLCs, or small single loop devices, and to connect these devices to the 800xA system.
GSD Converter Tool	Tool to convert the GSD file of a PROFIBUS PA device to be used with Linking Device LD 800P, SK2 and SK3.
GSD File	Gerätstammdaten, device communication database file for PROFIBUS devices.
Highway Addressable Remote Transducer (HART)	The HART protocol is a widely-used open protocol for communication with Smart devices.
Hot Removal	Units with hot removal support can be removed online, without any disturbance to other units connected to the CEX-Bus. This includes that the unit can be removed online if it becomes faulty.
Hot Standby	Definition for the redundancy behavior for the backup module. The backup module is configured and ready to take over in case of a failure of the primary module.

Term/Acronym	Description
Hot Swap	Units with hot swap (includes hot removal) support, can be replaced online, without any disturbance to other units connected to the CEX-Bus. In a redundant system, the backup unit can be replaced without any disturbances to the primary unit. This includes that the unit can be replaced online if it becomes faulty.
HWD File	Hardware Definition file, ASCII readable file describing the HW unit. Used by Control Builder M.
IEC	International Electrotechnical Commission.
IS	Intrinsic Safety
ISP	Input Set as Predetermined. When the controller detects a communication failure with an input module, the application variables are set to predetermined values specified by ISP control.
Linking Device	The linking device connects one or more PROFIBUS PA segments to PROFIBUS DP.
MBP	Transmission technology <b>Manchester Coding and Bus Powered</b> . This term replaces the previously common terms for intrinsically safe transmission “Physics in accordance with IEC 61158-2, 1158-2, etc.
Module Termination Unit (MTU)	The Module Termination Unit is a passive base unit that contains the PROFIBUS and CEX-Bus connectors.
Node	A computer communicating on a network, for example the Internet, Plant, Control or IO network. Each node typically has a unique node address with a format depending on the network it is connected to.
OSP	(Output Set as Predetermined). When an I/O module locally detects communication failure with the controller it automatically sets its output to the values specified by OSP control.

Term/Acronym	Description
PROFIBUS	<b>PRO</b> cess <b>FI</b> eld <b>BUS</b> . PROFIBUS is a manufacturer-independent fieldbus standard for applications in manufacturing, process and building automation. The PROFIBUS family is composed of three types of protocol, each of which is used for different tasks. The three types of protocols are: PROFIBUS FMS, DP and PA.
PROFIBUS DP	PROFIBUS DP is the communication protocol for Decentralized Peripherals. DP covers the versions DP-V0, DP-V1 and DP-V2.
PROFIBUS DP-V0	Version DP-V0 provides the basic functionality of DP, including cyclic data exchange, station, module and channel-specific diagnostics.
PROFIBUS DP-V1	Version DP-V1 contains enhancements geared towards process automation, in particular acyclic data communication for parameter assignment, operation, visualization and interrupt control of intelligent field devices, parallel to cyclic user data communication. This permits online access to stations using engineering tools. In addition, DP-V1 defines alarms. Examples for different types of alarms are status alarm, update alarm and a manufacturer-specific alarm.
PROFIBUS DP-V2	Version DP-V2 contains further enhancements and is geared primarily towards the demands of drive technology. Due to additional functionalities, such as isochronous slave mode and lateral slave communication (DXB) etc., the DP-V2 can also be implemented as a drive bus for controlling fast movement sequences in drive axes.
PROFIBUS FMS	<b>FI</b> eldbus <b>M</b> essage <b>S</b> pecification. Is designed for communication at the cell level, where programmable controllers, such as PLCs and PCs primarily communicate with each other. It was the forerunner of PROFIBUS DP.

Term/Acronym	Description
PROFIBUS PA	PROFIBUS for Process Automation
PROFIBUS International (PI)	The international umbrella organization for PROFIBUS founded in 1995.
PROFIBUS User Organization e.V. (PNO)	The PNO is the trade body of manufacturers and users for PROFIBUS founded in 1989.
Redundancy	The existence of more than one capability of an item (system, equipment or component) to perform its intended function.
Remote I/O	Input/Output units connected to a controller via a fieldbus.
RLM 01	<b>Redundancy Link Module</b> for PROFIBUS DP. The RLM 01 connects a non redundant PROFIBUS slave to the line redundant PROFIBUS.
RS-485	A communication interface standard from EIA (Electronics Industries Association, USA), operating on voltages between 0V and +5V. RS-485 is more noise resistant than RS-232C, handles data transmission over longer distances, and can drive more receivers
Segment	A Segment is a section of a PROFIBUS DP fieldbus that is terminated in its characteristic impedance. Segments can be linked by Repeaters to form a longer PROFIBUS DP fieldbus. Each Segment can include up to 32 devices.
tbit	Time a bit needs to be transferred on PROFIBUS. This time depends on the baudrate. $t_{bit} = 1/\text{baudrate}$ .
TRS	Tool Routing Service, a service that allows the user to use Fieldbus Builder PROFIBUS/HART to configure HART devices, via AC 800M.
Unit	A hardware unit, with or without accommodated software.



## Released User Manuals and Release Notes

A complete list of all User Manuals and Release Notes applicable to System 800xA is provided in *System 800xA Released User Manuals and Release Notes (3BUA000263\*)*.

*System 800xA Released User Manuals and Release Notes (3BUA000263\*)* is updated each time a document is updated or a new document is released. It is in pdf format and is provided in the following ways:

- Included on the documentation media provided with the system and published to ABB SolutionsBank when released as part of a major or minor release, Service Pack, Feature Pack, or System Revision.
- Published to ABB SolutionsBank when a User Manual or Release Note is updated in between any of the release cycles listed in the first bullet.



A product bulletin is published each time *System 800xA Released User Manuals and Release Notes (3BUA000263\*)* is updated and published to ABB SolutionsBank.

For standards and commercially available PROFIBUS documentation please visit the PROFIBUS Web Site (<http://www.profibus.com>).



---

# Section 1 Introduction

## General Overview

PROFIBUS is a manufacturer-independent fieldbus standard for applications in manufacturing, process and building automation. PROFIBUS technology is described in fixed terms in DIN 19245 as a German standard and in EN 50170 / IEC 61158 as an international standard. The PROFIBUS standard is thus available to every provider of automation product.

The PROFIBUS family is composed of three types of protocol, each of which is used for different tasks. Of course, devices with all three protocols can communicate with each other in a complex system by means of a PROFIBUS network.

The three types of protocols are: PROFIBUS FMS, DP and PA.

Only the two protocol types DP and PA are important for process automation.

**PROFIBUS DP: the bus for the decentralized periphery**

The PROFIBUS DP (RS 485) is responsible for communication between the Controller level of a process automation system and the decentralized periphery in the field, also intrinsic safety (RS485-IS) via DP-Ex barriers into hazardous area. One feature of PROFIBUS DP is its high speed of transmission up to 12 Mbit/s.

**PROFIBUS PA: extension for process automation**

This PROFIBUS variant was developed for the process industry. Communication and power supply to Transmitter and Positioners are handled direct via one 2-line cable and correspond to IEC Standard 61158-2 (named also as MBP, MBP-LP). Intrinsic safety (EEx i) (MBP-IS) installations in Zone 1 / Div.1 are possible. Coupling components (Linking Devices) are used to integrate PA bus lines into the PROFIBUS DP network. This ensures that all information is available in a continuously connected network through the complete PROFIBUS system (DP and PA).

The PROFIBUS DP is interfaced to the IEC61131 controller AC 800M using the PROFIBUS DP-V1 module CI854/CI854A in the AC800M. For high availability redundancy is supported.

The configuration for the PROFIBUS is done with the Control Builder M. The configuration covers the planning of the HW units in the HW tree and the device specific configuration for the master and slave units as well. The device specific configuration data is described within the device specific GSD File provided by the manufacturer of the device. To allow the configuration of the device within the Control Builder M the GSD File has to be converted to a HWD File and inserted to the project. The conversion is done with the GSD Import Tool.

The following figure shows the redundant PROFIBUS connected to the redundant AC 800M controller.

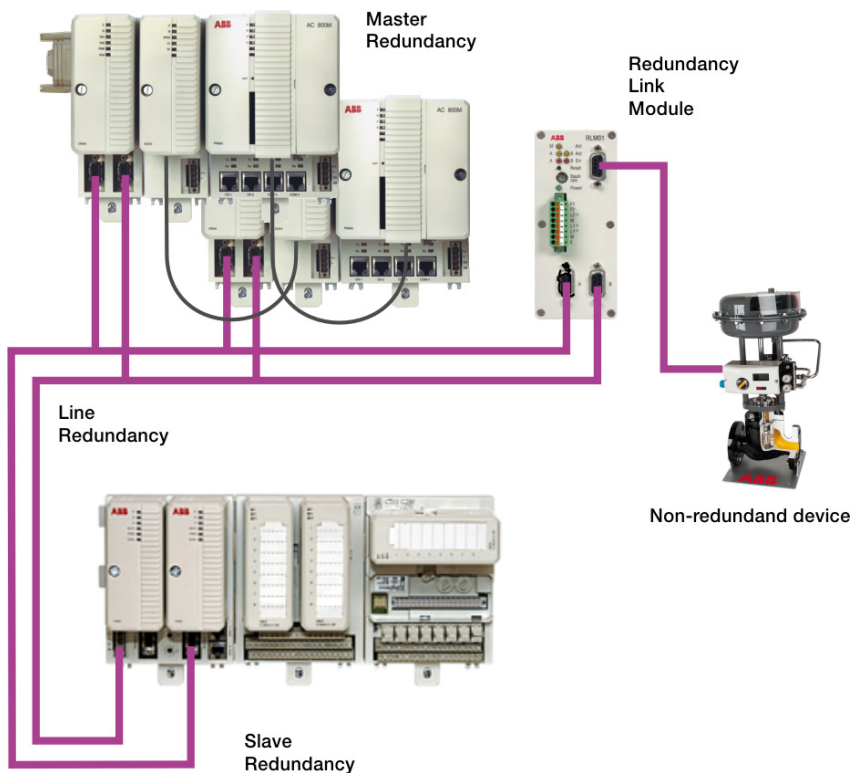


Figure 1. Redundant AC 800M with redundant PROFIBUS

---

# Section 2 Functional Description

## PROFIBUS Basics

### Basic Functions DP-V0

#### Cyclic Data Communication

The data communication between the DPM1 (DP Master Class 1) and its assigned slaves is automatically handled by the DPM1 in a defined, recurring sequence. With each user data transfer, the master can write up to 244 bytes of output data to the slave and read up to 244 bytes of input data from the slave. The Data is read and written synchronously in one procedure.

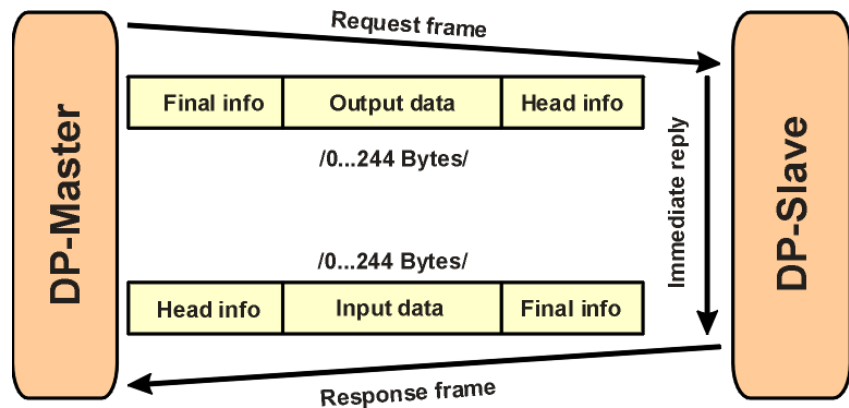


Figure 2. Cyclic User Data Transmission in DP

The assignment of the slaves to the DPM1, CI854/CI854A in this case, is done via the HW configuration in Control Builder M.

The data communication between the DPM1 and the slaves is divided into three phases: parameterization, configuration and data transfer. Before the master includes a DP slave in the data transfer phase, a check is run during the parameterization and configuration phase to ensure that the configured setpoint configuration matches the actual device configuration. During this check, the device type, format and length information and the number of inputs and outputs must also correspond. This provides you with reliable protection against parameterization errors.

### **Diagnostics**

In addition to the cyclic data the PROFIBUS slave unit provides diagnostic data. With this diagnostic data the slave can indicate errors or warnings on the slave unit, the I/O-units or the I/O-channels. Some diagnostic data is generic and defined by the PNO. But most of the diagnostic data is manufacturer specific.

The following errors/warnings are examples for PROFIBUS diagnostics:

Channel related:

- Wire break
- Short circuit

Module related:

- Wrong module type
- Module missing

Slave related:

- Power supply 2 error
- Internal bus error

The CI854/CI854A supports the operation of PROFIBUS DP-V0 diagnostics. The diagnostic data transferred from the slave to the master is mapped by the CI854/CI854A to the unit status of the PROFIBUS slave unit or the related I/O-unit and is indicated as error or warning in the UnitStatus in Control Builder M for the specific unit.

Only that diagnostic data configured within the hardware definition file is operated by the system. The configuration includes

- Selection of diagnostic to be operated by the system.
- Mapping of the diagnostic information within the diagnostic frame on PROFIBUS to the specific HW unit (slave or I/O unit).

- Definition of the corresponding bit in the unit status for the specific diagnostic information. Use of device specific codes in ErrorsAndWarnings and ExtendedStatus.
- Definition if the diagnostic information shall be indicated as error or warning.
- Definition of the presented text within unit status and alarm/event for the specific diagnostic information.
- Definition if in addition an alarm or event shall be generated for the specific diagnostic information. If yes also the severity has to be defined.

For S800 I/O and S900 I/O the configuration for the diagnostics is already specified in the hardware definition files that are provided with the system. For other slaves the configuration for PROFIBUS diagnostics can be done via the DeviceImport Wizard. The Device Import Wizard provides a dialog to pick up the diagnostic data from the GSD-file and map it to the DeviceSpecific and ExtendedStatus bits of the HwStatus for the related slave unit or I/O-unit. The dialog also supports the configuration of alarms/events based on the diagnostic data. For more information please refer to the online help for the GSD Import Tool.

### **DP Master Class 1 (DPM1) and Class 2 (DPM2)**

The DP master class 1 is the master that is in cyclic data transmission with the assigned slaves. To get into the cyclic communication the DPM1 has to configure the slave before.

The DP master class 2 is used for engineering and configuration. It does not have cyclic data transmission with the slave devices. Normally a DPM2 is only connected temporarily to the bus. A DPM2 can have class 2 communication to the slave devices before the slaves are configured via DPM1 and cyclic communication is active.



The CI854/CI854A is of type DP master class 1 (DPM1) and class 2 (DPM2).

### **System Behavior**

For a DPM1 master the following operating states are defined:

#### ***Stop***

No data communication between the DPM1 and the slaves.

**Clear**

The DPM1 reads the input information of the slaves and keeps the outputs of the slaves in a fail-safe state (“0” output).

**Operate**

The DPM1 is in the data transfer phase. In cyclic data communication, inputs are read from the slaves and output information written to the slaves.

The reaction of the system to a fault during the data transfer phase of the DPM1, for example a failure of a slave, is determined by the “Auto Clear Modus” defined via the BP flag configuration in the settings tab for CI854/CI854A. If this parameter is enabled, the DPM1 switches the outputs of all assigned slaves to a fail-safe state the moment a slave is no longer ready for user data transmission. The DPM1 subsequently switches to the clear state. If this parameter is disabled, the DPM1 retains in the operate state even in the event of a fault and the user can control the reaction of the system. Please refer also to [Settings Tab](#) on page 49.

**Sync and Freeze Mode**

In addition to the normal cyclic communication between the DPM1 (DP Master Class 1) and the assigned slaves, a master can send the control commands sync and freeze via multicast to a group of slaves.

With the sync-command the addressed slaves will freeze the outputs in their current state. New output values received by the master will be stored while the output states remain unchanged. The stored output data are not sent to the outputs until the next sync command is received. The Sync mode is terminated with the “unsync” command.

In the same way, a freeze command causes the addressed slaves to enter freeze mode. In this mode, the states of the inputs are frozen at their current value. The input data are not updated again until the master sends the next freeze command. Freeze mode is terminated with the “unfreeze” command.



The CI854/CI854A does not support sync and freeze mode.



### Monitoring the DP-V0 Communication

The cyclic communication between the DPM1 and the slaves is monitored by the master and the slaves itself.

If the CI854/CI854A master unit detects a failure in the communication with a slave, it will indicate the corresponding slave as disturbed. If enabled, Auto Clear Modus will be activated. On CI854/CI854A a special handling is implemented to support also redundancy for master and slave. In both cases the monitoring timings consider the failovers of master and slave.

On slave side the communication with the master is controlled via the watchdog. If no data communication with the master occurs within the watchdog control interval, the slave automatically switches its outputs to the fail-safe state.

Please refer also to [Connection Error](#) on page 70

### Multi Master Systems

In a multi master system several masters are connected to one bus. They represent either independent subsystems, comprising one DPM1 (DP Master Class 1) and its assigned slaves, or additional configuration and diagnosis devices. The CI854/CI854A master unit supports multi master systems.

The Control Builder M with the integrated PROFIBUS master calculation does not support multi master configurations. The calculation only covers one CI854/CI854A with its assigned slaves. If you connect several CI854/CI854A or additional configuration devices to the same bus you have to adapt the bus settings manually. But only the TTR has to be adapted. An overall TTR has to be calculated as the sum of all individual TTR for the CI854/CI854A master units connected to the same PROFIBUS. The resulting TTR has to be manually configured for all connected CI854/CI854A master units.

Example: you have three CI854/CI854A master units having the automatically calculated TTR times 20.000, 30.000 and 40.000, then you have to manually configure the TTR time 90.000 for all three units.



If a standalone tool is directly connected to the PROFIBUS as DPM2 (DP Master Class 2) master for some acyclic communication, then the TTR time of this master also has to be taken into account. Otherwise the standalone tool might get communication problems.

## Version DP-V1

### Acyclic Data Communication

The key feature of version DP-V1 is the extended function for acyclic data communication. The acyclic data communication is mainly used for configuration and parameterization purpose. With the acyclic DP-V1 read and write services the master can read or write any desired data to and from the slave. The data is addressed by slot, index and length. Each data block can be up to 244 bytes.

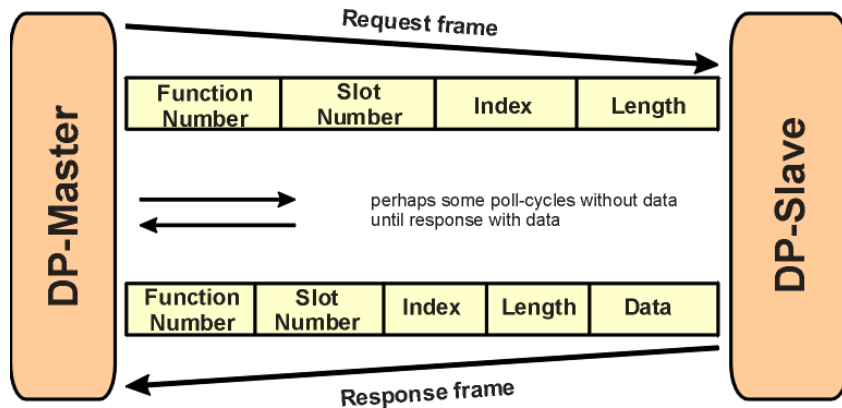


Figure 3. Acyclic Communication in DP-V1: Read Service

The transmission of acyclic data is executed in parallel to the cyclic data communication, but with lower priority. Acyclic services are operated in the remaining time at the end of the DP-V0 cycle.

The automatic master calculation for CI854/CI854A ensures that the gap on PROFIBUS is big enough for some acyclic communication. If there is a need to increase the gap for some additional acyclic communication this can be done via the TTR time. Please refer also to [Settings Tab](#) on page 47.

### Alarms and Status Messages

As a further function in DP-V1, the device specific diagnosis of the DP-V0 have been enhanced and divided into the categories alarms and status messages. As the

major difference to the DP-V0 diagnosis, the alarms from the slave to the master are transferred via confirmed services.



The CI854/CI854A does not support the alarm and status message handling of DP-V1. Only DP-V0 diagnosis is supported.

## Redundancy

### Overview

With PROFIBUS and CI854/CI854A you have a high scalability for redundancy. You have the options to configure redundancy for:

- PROFIBUS master unit CI854A
- PROFIBUS slave unit
- PROFIBUS line.

Depending on your needs each type of redundancy can be configured independent of each other. Also mixed configurations are supported. You can configure for example a redundant PROFIBUS installation consisting of a redundant CI854A master unit and redundant PROFIBUS lines and have connected redundant and non-redundant slave units in parallel.

A special mixture of redundancy is the so called combined slave and line redundancy. A slave provides two slave units supporting the PNO slave redundancy and each slave unit only provides one PROFIBUS interface. This is a one error tolerant solution. The slave unit will only have communication on one PROFIBUS line at a time and a single error on the PROFIBUS line will lead to a switchover of the slave units. But the big advantage of this solution are the reduced cost. Therefore it is a very popular solution. It is used for example for S800 I/O with CI840 and S900 I/O with CI920.

### Master Redundancy

The CI854A supports PROFIBUS master redundancy. Two CI854A connected to one controller can be configured to work in a redundant configuration. The configuration for redundancy is done via configuring the CI854A in the hardware tree of the Project Explorer. For configuration of redundancy please refer to [Add Redundancy for Master Unit](#) on page 41.

Primary and backup CI854A need different node addresses on PROFIBUS. While the primary node address is configured via the settings in the HW Configuration Editor the node address for the backup module is defined by the fixed offset -1 to the node address of the primary module. Therefore you cannot configure the node address 0 on PROFIBUS with CI854/CI854A. This is reserved for redundancy.

During normal operation only the primary CI854A has communication with the slave units. The backup unit is in hotstandby mode. It is configured by the controller and synchronized by the primary unit. If there is a failover because of for example a disturbed PROFIBUS communication, primary and backup module change the node addresses. During failover the former primary module will get reset.

After download and successful configuration the availability of the backup unit is monitored. This includes the balancing of current data and the communication links via PROFIBUS and CEX-Bus as well. In case of no error the DUAL LEDs on primary and backup unit will be lit. If the backup unit is not ready to takeover the DUAL LEDs will get off on both units. The error will be indicated in the unit status and a potential redundancy switchover will be inhibited in this case.

Reasons to perform a switchover are for example that the primary unit has lost the communication to all connected slaves “All slaves failed” because of for example a cabling problems or a “Fatal error” on the primary CI854A itself was detected.



The PROFIBUS master redundancy is only supported by CI854A and not CI854. You also have to use the AC 800M controller type PM861A, PM864A or PM865 to drive the redundancy.



If the CI854A is configured for redundancy the watchdog time will be increased automatically by 1000 ms. This is needed to allow the CI854A a switchover before the slaves will activate OSP (Output Set as Predetermined) control.

## Slave Redundancy

The CI854/CI854A supports the PROFIBUS slave redundancy like specified by the PROFIBUS User Organization (PNO). The specification can be found at <http://www.profibus.com>.

A redundant slave has two PROFIBUS interfaces, one for the primary and one for the backup slave. If line redundancy is used, one of the interfaces is connected to line A and the other to line B. If not, both interfaces are connected to the same PROFIBUS cable. The PROFIBUS address of the backup slave is always the

address of the primary slave plus 64. The configuration in the Control Builder ensures, that both addresses are available when the slave is set redundant. If a redundancy switchover of a slave occurs, also the PROFIBUS addresses are switched. That means, the primary slave always has the assigned address and the backup slave always has the address + 64 regardless of who is the primary and who is the backup. This kind of redundancy is called "flying redundancy".

Only the primary slave can transfer process data and diagnostic information on the PROFIBUS. Therefore the status of the primary slave also contains the information of the backup slave. Please refer to the slave documentation for the details.

Although the backup slave has no active data transmission with the master the CI854/CI854A is able to monitor the backup slave. The backup slave is available in the Livelist and if redundancy is configured the monitoring will be activated. If the backup slave fails, the information "Redundant slave does not exist" will be set in the ExtendedStatus of the primary slave.

To allow the slave a failover in case of an error the CI854/CI854A has a special monitoring function. If the redundant slave gets disturbed the CI854/CI854A waits for  $(2 * \text{watchdog time} + 1)$  before connection down will be indicated for the slave. During this time the slave can perform a switchover and proceed with the normal data exchange without interrupting the communication.



If the non-redundant slave gets disturbed the CI854/CI854A waits for watchdog time before connection down will be indicated for the slave.

## Line Redundancy

The CI854/CI854A supports line redundancy for PROFIBUS DP. Therefore the two interfaces "PROFIBUS A" and "PROFIBUS B" are available on the baseplates TP854 of the modules. There is a Redundancy Link Module functionality implemented on the CI854/CI854A that handles the sending and receiving of data on the PROFIBUS. Independent of any configuration the RLM sends data on both lines and receives data only via one line. Regarding the receiving of data the RLM checks if the slave sent data on both lines and if the data is valid. The first received valid data on line A or B will be picked up and operated. It is possible that the slave sends data on both lines in parallel or only on one line.

The monitoring of the line redundancy can be enabled or disabled. The default is disabled. The enabling is done via the parameter "Line redundancy" in the settings

for CI854/CI854A. If the line redundancy is enabled the warning "No activity on PROFIBUS" will be indicated for the specific line in the case of a failure, for example if there is a fault on the PROFIBUS cable.

Please enable the monitoring of line redundancy, if

- redundant slaves according to the PNO redundancy specification are used and/or
- non-redundant slaves provide a line redundant interface and/or
- non-redundant slaves with only one PROFIBUS interface are connected to the CI854/CI854A with a RLM01.



The enabling of line redundancy does not affect the indication of the LEDs RxA and RxB on CI854/CI854A.

## Status Handling

### Status Handling for DP-V1 Master Unit

Every status information for CI854/CI854A in terms of hardware and software errors is indicated via the unit status. The unit status is used to present the status of the HW unit in Control Builder M while CBM is in online mode. In addition alarms/events are generated based on the unit status (please refer also to [Alarms and Events](#) on page 36). For special reasons also the access to the unit status via the controller application is supported.

The both following tables present all device specific ErrorsAndWarnings and ExtendedStatus defined for CI854/CI854A.

*Table 1. Device Specific ErrorsAndWarnings for CI854/CI854A*

Bit	Code	Status Text	Status Type	Alarm/Event	Severity	Description
22	16#00400000	DeviceSpecific100				Reserved
23	16#00800000	Hardware watchdog on CI854(A) expired	Error	Alarm	Medium	The HW watchdog on the primary CI854/CI854A was not triggered by the CI854/CI854A firmware within the timeout.
24	16#01000000	Error in PROFIBUS master configuration	Error	Alarm	Medium	A configuration error has been detected on the primary unit.
25	16#02000000	PROFIBUS com. failure between Primary and Backup	Warning	Alarm	Medium	The PROFIBUS connection between primary and backup unit failed.
26	16#04000000	Communication memory obtained too long	Warning	Event	High	Overload of the communication memory access. There is too much access from the application tasks to the PROFIBUS I/O-data in the shared memory on the CI854/CI854A so that the CI854/CI854A cannot update the memory in time.
27	16#08000000	Duplicate slave address	Warning	Alarm	Medium	Two or more PROFIBUS slaves have the same address.
28	16#10000000	No activity on PROFIBUS line A	Warning	Alarm	Medium	If line redundancy is enabled, this warning reflects the state of the RxA LED of the primary unit.

Table 1. Device Specific ErrorsAndWarnings for CI854/CI854A

Bit	Code	Status Text	Status Type	Alarm/Event	Severity	Description
29	16#20000000	No activity on PROFIBUS line B	Warning	Alarm	Medium	If line redundancy is enabled, this warning reflects the state of the RxB LED of the primary unit.
30	16#40000000	Hardware fail of CI854 (A)	Error	Alarm	High	A hardware failure has been detected on the primary unit, for example RAM failure.
31	16#80000000	Firmware needs to be reloaded	Error	Alarm	Medium	The primary unit does not contain a valid firmware.

Table 2. Device Specific ExtendedStatus for CI854/CI854A

Bit	Code	Status Text	Status Type	Alarm/Event	Severity	Description
0	16#00000001	Timeout on bus, maybe duplicate slave address (TTO)	Warning	-	-	The lower layer of the PROFIBUS has detected a timeout. During a baudrate change this error may occur for a short time. If it remains, the PROFIBUS connection and slave addresses must be checked.
1	16#00000002	Bus synchronization failure, check hardware (SYN)	Warning	-	-	The lower layer of the PROFIBUS has detected a synchronization error. During a baudrate change this error may occur for a short time. If it remains, check the PROFIBUS hardware (cables, connectors, slaves).
2	16#00000004	Taken out of ring by another master, check system conf.	Warning	Event	Low	Another master on the PROFIBUS has disabled the CI854/CI854A. Check the system configuration.



Table 2. Device Specific ExtendedStatus for CI854/CI854A

Bit	Code	Status Text	Status Type	Alarm/Event	Severity	Description
3	16#00000008	Fatal medium access error	Warning	Event	Low	The lower layer of the PROFIBUS cannot access the medium. Check the connection of the CI854/CI854A (cable, connectors). This can also be a hardware failure on the CI854/CI854A itself.
4	16#00000010	Fatal hardware error	Warning	Event	Low	A fatal hardware error has been detected. Replace the CI854/CI854A.
5	16#00000020	All slaves failed	Warning	Alarm	Medium	Check the PROFIBUS connections (cable, connector at the CI854/CI854A). The reason can also be a hardware error of the CI854/CI854A. If the CI854A is used redundant, this error leads to a redundancy switchover.
6	16#00000040	Hardware configuration error on backup	Warning	Event	Low	A configuration error has been detected for the backup unit.
7	16#00000080	Backup device not found	Warning	Event	Low	The backup unit was not found on the CEX-Bus.
8	16#00000100	I/O configuration error on backup	Warning	Alarm	Medium	The backup CI854A has detected a configuration error for a slave unit.
9	16#00000200	I/O connection error on backup	Warning	Alarm	Medium	The backup CI854A has detected a configuration error for a slave unit.
10	16#00000400	Hardware watchdog on Backup CI854(A) expired	Warning	Event	Low	The HW watchdog on the backup CI854/CI854A was not triggered by the CI854/CI854A firmware within the timeout.

Table 2. Device Specific ExtendedStatus for CI854/CI854A

Bit	Code	Status Text	Status Type	Alarm/Event	Severity	Description
11	16#00000800	Error in PROFIBUS master configuration of Backup	Warning	Event	Low	A configuration error has been detected on the backup unit.
12	16#00001000	No activity on PROFIBUS line A of Backup	Warning	Alarm	Medium	If line redundancy is enabled, this warning reflects the state of the RxA LED of the backup unit.
13	16#00002000	No activity on PROFIBUS line B of Backup	Warning	Alarm	Medium	If line redundancy is enabled, this warning reflects the state of the RxB LED of the backup unit.
14	16#00004000	Hardware fail of CI854A Backup	Warning	Alarm	Medium	A hardware failure has been detected on the backup unit, for example RAM failure.
15	16#00008000	Firmware needs to be reloaded on Backup	Warning	Alarm	Medium	The backup unit does not contain a valid firmware.
16	16#00010000	CEX-Bus com. failure between Primary and Backup	Warning	Alarm	Medium	The CEX-Bus connection between primary and backup unit failed.
17	16#00020000	Fatal error on Primary detected	Error	Alarm	High	A general error has been detected on the primary unit and the CI854/CI854A stops the normal operation. If the CI854A is used redundant, this error leads to a redundancy switchover.

Table 2. Device Specific ExtendedStatus for CI854/CI854A

Bit	Code	Status Text	Status Type	Alarm/Event	Severity	Description
18	16#00040000	Fatal error on Backup detected	Warning	Alarm	Medium	A general error has been detected on the backup unit and the CI854/CI854A stops the normal operation. This error prohibits a redundancy switchover.
19	16#00080000	ExtendedStatus20				Reserved
20	16#00100000	ExtendedStatus21				Reserved
21	16#00200000	ExtendedStatus22				Reserved

## Status Handling for Slave Units

The CI854/CI854A also handles status information for the connected slave units. If there is a failure on the PROFIBUS slave, an indication for the FCI or the specific I/O-unit will appear.

There are several reasons to let the CI854/CI854A indicate some status information for the slave unit:

- No cyclic communication to the slave:  
Connection down will be indicated for the disturbed slave unit.
- Slave has active standard diagnosis:  
The slave indicates for example “Parameter data fault” or “Configuration data fault”. This errors will be indicated without any special configuration.
- Slave has active extended diagnosis:  
This is also called PROFIBUS Diagnostics. Depending on the configuration the diagnostic information is indicated for the FCI (Fieldbus Communication Interface) or the related I/O-unit. Please refer also to [Diagnostics](#) on page 22.

- A monitoring function has detected a failure:  
The CI854/CI854A for example has detected a configuration error during download or the backup slave is not present on the PROFIBUS.

## Alarms and Events

PROFIBUS DP-V1 uses the general alarm and event handling provided with the system. Alarms and events are generated only via the status interface. The CI854/CI854A influences the generation of alarms/events by setting/resetting the individual status bits. For every status bit in `ErrorsAndWarnings` and `ExtendedStatus` a fixed configuration information is available that defines if a change of a status bit shall generate an alarm or event. The generated alarms/events are of the type system alarm or system event. With the generation of the alarm/event the status interface also adds the severity and the time stamp.

## Hot Swap

The CI854A supports hot swap. It can be replaced online, without any disturbance to other units connected to the CEX-Bus. After hot removal and the subsequently insertion the unit gets configured automatically.

In a redundant configuration, the backup unit can be replaced without any disturbances to the primary unit. This includes that the unit can be replaced online if it becomes faulty.

For support of hot swap no configuration is necessary.

## Hot Configuration in Run (HCIR)

With hot configuration in run a slave can be configured online without initialization the PROFIBUS communication. The new or changed configuration is downloaded to the slave while the cyclic communication keeps active.

If a slave supports HCIR I/O-units can be added or deleted online. During reconfiguration the cyclic data transmission between CI854/CI854A and the slave is stopped. The CI854/CI854A keeps the input values and the slave the output values. After finishing the reconfiguration the cyclic data transmission will proceed based on the new configuration data.

The reconfiguration is monitored by the CI854/CI854A with the HCIR timeout. By starting the reconfiguration the HCIR timeout is sent via a SetPrm telegram to the slave. This indicates the slave to increase the watchdog timeout to the value defined by the HCIR timeout until the reconfiguration is finished. The timeout for HCIR is defined on CI854/CI854A by:

$$\text{HCIR}_{\text{timeout}} = 10 \times \text{TTR} / (\text{bit/sec}) + 300 \text{ ms.}$$

A configuration via HCIR is only possible for slaves that have implemented this feature like S800 I/O and S900 I/O. To activate the HCIR sequence a special entry in the hardware definition file is necessary. For slaves imported via the Device Import Wizard this parameter is automatically set if the setting is available in the GSD file.



---

## Section 3 Configuration

### Hardware Library

To configure hardware types for PROFIBUS master and slave units hardware libraries are used. How to handle hardware libraries, refer *System 800xA Control AC 800M Configuration (3BSE035980\*)*.

### Insert PROFIBUS Master Unit

To insert a new CI854/CI854A PROFIBUS DP-V1 master unit proceed as described.

1. Right-click on the controller you want to insert the CI854/CI854A and select **Insert Unit**. The Insert Unit dialog pops up.

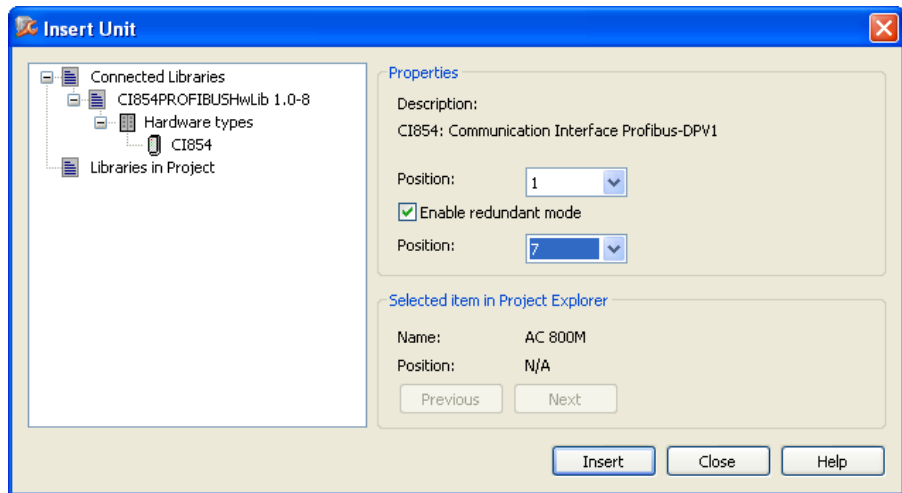


Figure 4. Dialog for inserting CI854/CI854A

2. Expand the library for CI854 under Connected Libraries and select the CI854 hardware type.
3. Select a position for the hardware unit in the dialog box displayed. The first available position is chosen by default. If another position is desired, click the list box to display available positions and select the desired one.
4. If the module shall be set redundant check Enable redundant mode. This releases the dialog box for the position of the backup unit. Select a position for the backup unit.
5. Click **Insert** button to apply the current changes.
6. Click **Close** to close the dialog or proceed inserting further units.
7. The hardware unit is now included in the tree. The icon shown in the tree depends on if redundancy is configured or not. For a redundant configured unit the position for the backup module is presented within parenthesis.

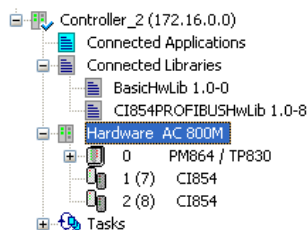


Figure 5. Redundant CI854A in HW-Tree



## Add Redundancy for Master Unit

If the CI854A is already configured and running in single mode you can add redundancy.

1. Right-click on the unit you want to add the redundancy and select **Redundancy > Add Redundant Unit**.
2. Select a position for the backup unit in the dialog box displayed. The first available position is chosen by default. If another position is desired, click the list box to display available positions and select the desired one.

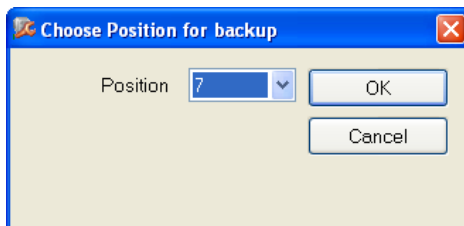


Figure 6. CEX-Bus Position for backup CI854A

3. The icon changes to the redundancy icon and the text is updated with backup position within parenthesis (see [Figure 5](#)).



The inserted backup unit is called unit B. Unit B is fixed related to the configured position. Unit B starts as backup but acts as primary after failover.

## Delete Redundancy for Master Unit

If the CI854A is already configured and running in redundant mode you can delete redundancy.

1. Right-click on the CI854A you want to delete redundancy for and select **Redundancy > Delete Backup**.
2. The icon changes to the single icon and the position for the backup is deleted in the text.



In the offline mode of Control Builder M unit B is always presented as the backup unit independent of the current state. Therefore always unit B will be deleted as backup. If you download and go online a failover may be performed by CI854A if unit B acts as primary. Unit A gets primary and afterwards unit B will get deleted.

## Configure the PROFIBUS Master Unit

### HW Editor

Open the HW editor via double-click on the hardware unit or choose Editor from the CI854 context menu. The HW editor contains the following tabs: Settings, Connections and Unit Status.

## Settings Tab

The following parameters are defined by default values for CI854/CI854A:

Parameter	Value	Type	Unit	Min	Max
Node address (FDL_Add)	1	dint		1	125
Baudrate	1.5M	enum	bit/s		
Slot time (TSL)	300	dint	tbit	37	16383
Min station delay (min TSDR)	11	dint	tbit	11	1023
Max station delay (max TSDR)	150	dint	tbit	37	65535
Quiet time (TQui)	0	dint	tbit	0	127
Setup time (TSet)	20	dint	tbit	1	255
Target rotation time (TTR)	20000	dint	tbit	255	999999
Gap factor (G)	1	dint		1	100
Highest station address (HSA)	126	dint		1	126
Max retry limit	3	dint		0	7
BP flag	Auto Clear OFF	enum			
Min slave interval	20	dint	100us	1	65535
Poll time out	50	dint	ms	1	65535
Data control time	125	dint	10ms	1	65535
Watchdog time	200	dint	ms	10	650250
Line redundancy	Disabled	enum			
Delta TTR	0	dint	%	0	100
Calculation method	Actual value based	enum			

Figure 7. Settings for CI854/CI854A

These parameters are used to set up CI854/CI854A. Normally, most of the parameters need not be changed. Parameters marked with a \* will be calculated

(during download) by the Control Builder, but may need to be adjusted due to special slaves, repeaters, or segment couplers used.

*Table 3. Settings for CI854/CI854A*

Parameter	Description
Node address	This is the PROFIBUS address of the master which can be in the range 1-125. This address must differ from all other slave addresses, otherwise a compilation error is generated. Slaves are assigned their addresses according to the device numbering in the configuration. With multi-master systems ensure that there is no addressing conflict with the other masters and their slaves.
Baudrate	Supported baudrates are 9.6; 19.2; 93.75; 187.5; 500; 1500; 3000; 6000 and 12000 kbit/s. Not support are the baud rates 31.25 and 45.45 kbit/s. The default value is 1.5 Mbit/s. Higher values require careful consideration of correct cable installation. All slave devices must support baud rate setting. Some slaves require a manual reset after change of the baud rate. A compilation warning occurs if a slave does not support the selected baud rate. In this case the next lower supported baud rate will be selected automatically. If no one can be found, a compilation error will be generated. Changing the baud rate may also require changing of other bus parameters to ensure successful communication. The automatic calculation will determine the right settings. Default values of parameters at different baud rates can be found in <a href="#">Table 4</a> .

Table 3. Settings for CI854/CI854A


Parameter	Description
*Watchdog time (TWD)	<p>Each slave has a watchdog timer that is retriggered by requests from the master. If the watchdog time expires the slave outputs are set to the predetermined value. This control ensures a controlled predetermined value if there is a break in the master or the communication system. Set the watchdog time at least as long as the theoretical system reaction time (see Target Rotation Time, TTR, below). Watchdog time should be greater or equal than <math>TTR * tbit * 10</math>, where <math>tbit = (1/baud\ rate[kbits/s])</math>. For example, with <math>TTR = 20000\ tbit</math> and <math>baud\ rate = 9.6\ kbit/s</math>, the watchdog parameter should be greater than: <math>20000 * (1/9.6) * 10 = 2084\ ms</math>. For example, with <math>TTR = 20000\ tbit</math> and <math>baud\ rate = 1.5\ Mbit/s</math>, the watchdog parameter should be greater than: <math>20000 * (1/1500) * 10 = 133\ ms</math>. The automatic calculation during the download prohibits a too short watchdog time and issues an appropriate warning or error message.</p>
*Slot time	<p>The slot time is the maximum time a master must wait for a transaction response. It must always be greater than <math>(&gt;)MaxTsdR + TQUI + 11 + 2 + SafetyMargin</math> (see below for <math>MaxTsdR</math> and <math>TQUI</math>) or a compilation warning will be generated and the value will be set to the smallest one allowed. Setting it too high may slow down the performance.</p> <p> PROFIBUS PA may require long settings for the slot time.</p>
*Min station delay (MinTsdR)	<p>The period of time which elapses before the responder can send the response frame expressed in tbits. Slave implementation determines, however, the minimum response time. The default value is 11 tbits. Setting <math>MinTsdR</math> too high may slow down the performance. Settings below 11 will be overwritten with the defined minimum value 11 when closing the editor window.</p>

Table 3. Settings for CI854/CI854A


Parameter	Description
*Max station delay (MaxTsdR)	The maximum time the slave is given to respond to a request message, expressed in tbits. At different baud rates it may have different values. The automatic calculation ensures that the value set in the master is higher or equal than the highest value for the connected slaves. If not, a warning or error message will be shown.
*Quiet time (TQUI)	The period of time a transmitting station must wait after the end of a frame before enabling its receiver. Its purpose is to take care of transmitter fall time after switching off the transmitter. It is significant when using self-controlled repeaters. The automatic calculation ensures that TQUI is less than MinTsdR or a compilation warning will be generated and the value will be set to the highest allowed value.
*Setup time	<p>The time between the occurrence of an interrupt request (for example, SYN timer expired) and the necessary reaction (for example, enabling the receiver). The value depends on the baud rate.</p> <p> PROFIBUS PA applications may require longer times than the default values at the different baud rates.</p>

Table 3. Settings for CI854/CI854A



Parameter	Description
*Target rotation time (TTR)	<p>The target rotation time is the anticipated time for one token rotation on the PROFIBUS network, including allowances for high- and low-priority transactions and GAP maintenance. For networks with one master it must be greater than the system reaction time.</p> <p>The automatic calculation for the CI854/CI854A ensures, that TTR is high enough for a single CI854/CI854A or a redundant CI854A PROFIBUS master and all its slaves plus two acyclic communications used for toolrouting plus a safety margin according to the defined max retry limit.</p> <p>The calculated value may be increased to allow more acyclic traffic, if necessary. If there are other masters on the bus, the calculated value has to be increased for the time these other masters need for their cyclic and acyclic communication. Refer to the configuration of these masters.</p> <p> In a multi-master system all masters must use the same value for TTR.</p>
GAP factor (GAP)	<p>This parameter defines the number of token rotations between GAP maintenance cycles.</p> <p> The current version of the CI854/CI854A always uses a value of 1 independent of the value entered here.</p>

Table 3. Settings for CI854/CI854A





Parameter	Description
Highest station address (HSA)	<p>This parameter defines the highest station address on the PROFIBUS. Set the parameter to at least the highest number of node addresses configured for all masters and slaves present on the bus.</p> <p>Redundant slaves may use it for checks of the backup slave. Do not set it below the highest used (redundant) slave address.</p> <p>Optical link modules uses this parameter to manage the redundancy functionality. The HSA has to be at least one greater than the highest number of node addresses for masters and slaves present on the bus.</p> <p> It is highly recommended not to change the default of 126.</p>
Max retry limit	<p>This parameter indicates how often the FDL (Fieldbus Data Link Layer) must repeat the request frame when no response or acknowledge frame is received from the slave station within the slot time.</p> <p> PROFIBUS PA applications may require that you set the max retry limit to 3-7.</p>
*Min slave interval	<p>This parameter specifies the minimum time between two polling cycles for a slave to expire. The setting must be greater than the maximum value for all connected slaves, or a compilation warning will be generated and the value corrected.</p> <p> The value of this parameter should be set as low as possible. A large value will slow down performance on the bus</p>
Poll timeout	<p>In the case of master-to-master communication this parameter specifies the maximum amount of time the requester may take to fetch the response. The default for all baud rates are 50 ms.</p>



Table 3. Settings for CI854/CI854A

Parameter	Description
BP Flag	<p>Bus parameter flag that defines how the CI854/CI854A shall react on a failure. With “Auto Clear ON” a single failure of only one slave will bring the master into the clear state: the CI854/CI854A reads the input information of the slaves and keeps the outputs of the slaves in a fail-safe state (“0” output). With “Auto Clear OFF” the communication will keep running with the slaves instead of the disturbed one. Please refer also to <a href="#">System Behavior</a> on page 23.</p> <p> The Auto Clear Mode may reset your outputs and therefore shutdown your system. The default is “Auto Clear OFF”. Enable this functionality only in cases when it’s needed.</p>
*Data control time	The Data Control Time defines the time in which a master has to send his state (Stop, Clear, Operate) to the slaves. For CI854/CI854A the Data control time shall be $\geq 2 * \text{Watchdog time}$ .
Line redundancy	If slaves are connected to both lines A and B of CI854 then set this parameter. By this the warning “No activity on PROFIBUS” will be indicated for the specific line in case of a lost communication on that line.
Delta TTR	<p>Increases automatically the calculated TTR time (see Target Rotation Time (TTR), above).</p> <p>A change for Delta TTR is only needed if there is a high load of acyclic DP-V1 communication on the PROFIBUS used for toolrouting.</p>
Calculation Method	With this parameter you can define if you want to make a calculation based on the actual entered values (Actual value based) or if the calculation shall determine the minimal possible values to achieve the fastest cycle time on PROFIBUS (Minimum value based).

### Connection Tab

For CI854/CI854A a connection to the UnitStatus can be configured. For more information refer to Control Builder M online help.

### Unit Status Tab

For information on the Unit Status tab please refer to Control Builder M online help.

## Automatic Calculation of PROFIBUS Master Parameter

The easiest way to define the bus parameters is to let the system calculate them. You only have to set:

- the node address,
- the baudrate and
- the line redundancy mode

to the required values. All other parameters don't need to be changed. The Parameters marked with a \* in [Table 3](#) are calculated automatically during download depending on the actual configuration for the slave units.

The automatic calculation ensures that all calculated parameters will be on the safe side. This means also manual changes have to be considered. Therefore no changes of the actual settings in direction to faster but insecure values takes place.



To get the optimized values for the PROFIBUS master parameters set the parameter **Calculation method** to **Minimum value based**. The automatic calculation will now recalculate all parameters. The result is the fastest possible cycle time you can reach for the configured slaves.

If you have devices that need special settings then first proceed as described above. In a second run do the manual adjustments to the specific parameters, switch the parameter **Calculation method** to **Actual value based** and repeat automatic calculation.

## Default Values

The following default values may be used as guidelines when setting up the PROFIBUS DP-V1 baudrate. The values are taken from the PROFIBUS standard and modified for the CI854/CI854A needs:

*Table 4. Default Settings for different Baudrates*

Parameter	Value	Value	Value	Value	Value	Value	Value	Value	Value
Baudrate	9.6k	19.2k	93.75k	187.5k	500k	1.5M	3M	6M	12M
Slot time (TSL)	100	100	100	100	200	300	400	600	1000
Min Station delay (min_TSDR)	11	11	11	11	11	11	11	11	11
Max Station delay (max_TSDR)	60	60	60	60	100	150	250	450	800
Quiet time (TQui)	0	0	0	0	0	0	3	6	9
Setup time (TSet)	20	20	20	20	20	20	24	32	48
GAP factor (G)	1	1	1	1	1	1	1	1	1
Max retry limit	1	1	1	1	2	3	3	3	4
Min slave interval	20	20	20	20	20	20	20	20	20
Data control time	>= 2*TWD								



Some PROFIBUS slave units like CI830 and CI840 are not compatible with the parameter settings shown above. In such a case, none of the parameters above can be used. Please see also the documentation for the PROFIBUS slave type you are using.



The Control Builder M supports default values only for 1.5 Mbit/s. The default values are set by adding a new CI854/CI854A hardware unit. If you change the baudrate the current values for the other parameters will not be changed. If you also want to adapt these parameters to the new baudrate you have to do it manually.

## Special Settings

For some devices special manual adjustments to the PROFIBUS master parameters are necessary.

*Table 5. Adjustments to Master Parameters*

Device	Parameter	Adjustment
RLM01, Repeater, Media- Converter		No adjustment is necessary if only one segment or a short optical connection is used. The automatic calculation of the PROFIBUS master parameters has taken this already into account. If the PROFIBUS consists of several segments or long optical connections are used then the settings have to be adapted to the values provided by the supplier.
Optical Media	Slot time (TSL)	Please refer to the values provided by the supplier.
Linking Device <sup>(1)</sup> LD 800P from ABB	Slot time (TSL)	Increase Slot time about 150...500 <sup>(2)</sup>
	Watchdog time	The watchdog time on PA-side is fixed in the firmware of LD 800P to 5 seconds and independent from the DP-side.
Linking Device <sup>(1)</sup> SK2 from P&F	Slot time (TSL)	Increase Slot time about 150...500 <sup>(2)</sup>
	Watchdog time	The SK2 is working in a transparent mode. It passes through the calculated watchdog time from the DP-side to the PA-side. Because the PA-side is much slower than the DP-side, the watchdog time on DP-side has to be configured adequate to the timing constraints on PA-side. Therefore set the watchdog time to 5 seconds.
Linking Device <sup>(1)</sup> SK3 (PROFIBUS Power Hub	For more information see <a href="#">PROFIBUS Power Hub SK3</a> on page 59	

Table 5. Adjustments to Master Parameters

Device	Parameter	Adjustment
Linking Device SK1 from P&F	Baudrate	93.75k
	Slot time (TSL)	4095 / 7192 <sup>(3)</sup>
	Min Station delay (min_TSDR)	22
	Max Station delay (max_TSDR)	1000
	Quiet time (TQui)	0
	Setup time (TSet)	150
	GAP factor	10

- (1) To get the 12 Mbit/s supported by the LD 800P, SK2 or SK3 enabled, an adaptation of the timing parameters for the slave device is necessary. This is automatically done by the Device Import Wizard during conversion of the GSD file to HWD file. If DIW is not used because of any reason it can also be adapted by using the GSD Converter Tool. If object types of the Device Library are used, they already have the timing parameters adapted for LD 800P, SK2 and SK3.
- (2) Increase the slot time if there is high traffic for acyclic DP-V1 communication.
- (3) Use this value if the total of input and output data for one PA device exceeds 253 bytes.



If necessary the watchdog time for LD 800P, SK2, and SK3 can be decreased. The exact value can be calculated based on the I/O data length, the number of PA-devices, length of PA-segments etc. For more information refer to the User Instructions for LD 800P, SK2, and SK3.

## Insert a Slave Unit

To add a new PROFIBUS DP slave unit proceed as described.

1. Right-click on the CI854 you want to insert the slave unit and select **Insert Unit**. The Insert Unit dialog pops up.

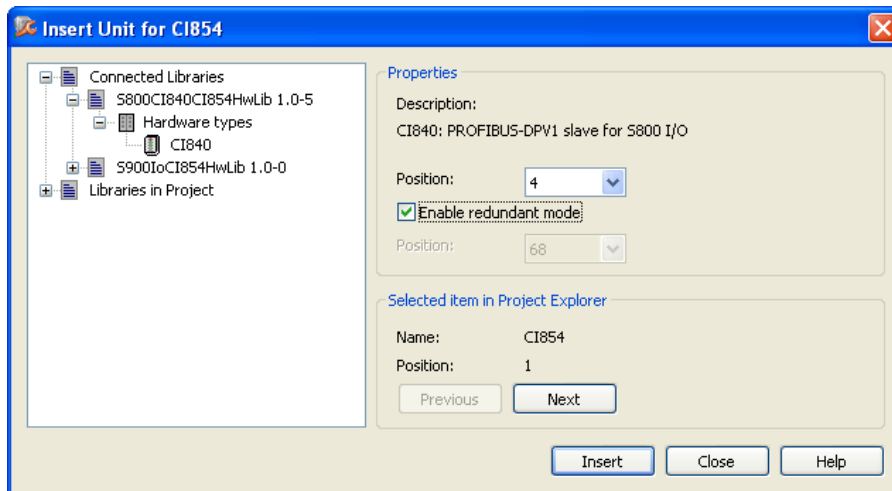


Figure 8. Dialog for inserting CI840

2. Expand the library for the slave device under Connected Libraries and select the slave hardware type like CI840 as shown in the example for S800. Select a position, the PROFIBUS slave address, for the hardware unit in the dialog box displayed. The first available position is chosen by default. If another position is desired, click the list box to display available positions and select the desired one.



The position configured with Control Builder M has to fit to the PROFIBUS address configured on the hardware unit itself. The configuration on the hardware unit is typically done via DIP switches. If the unit does not have a DIP switch like a PROFIBUS PA device it is possible to set its address via the PROFIBUS using the Web interface described in [SetAddress](#) on page 77.

3. If the module shall be set redundant check Enable redundant mode. The position for the backup slave will be calculated automatically and displayed (see also [Slave Redundancy](#) on page 28).
4. Click **Insert** button to apply the current changes.
5. Click **Close** to close the dialog or proceed inserting further units.

- The hardware unit is now included in the tree. The icon shown in the tree depends on if redundancy is configured or not. For a redundant configured unit the position for the backup module is presented within parenthesis.



Figure 9. Redundant CI840 in HW-Tree



If the FCI shall work in redundant mode, it is needed to configure redundancy in the settings tab of the hardware unit as described in [Add Redundancy for Slave Unit](#) on page 56.

- If the slave is a modular one like S800 I/O and S900 I/O you have to add sub-units for the required functionality. Right-click on the slave unit you want to insert the I/O-modules and select **Insert Unit**. The Insert Unit dialog pops up. You can insert all sub-units before closing the dialog.

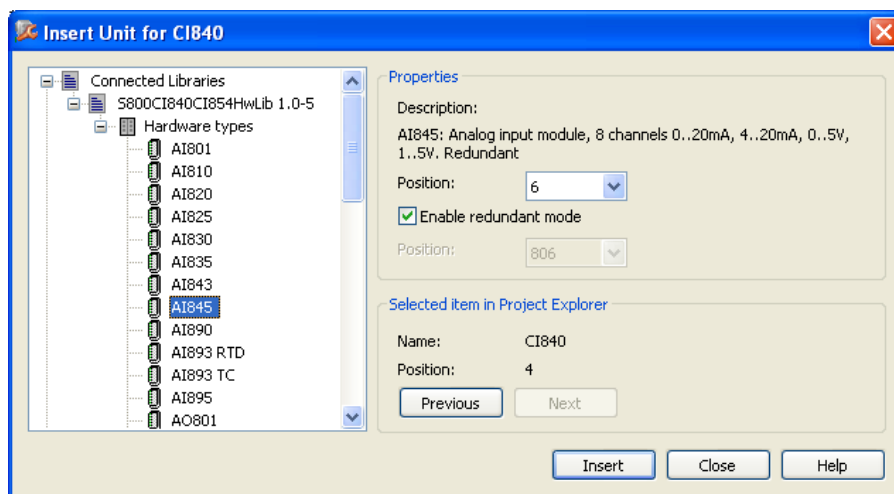


Figure 10. Insert Sub-Units for S800

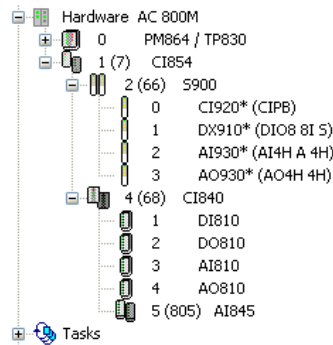


Figure 11. Redundant PROFIBUS with S800 I/O and S900 I/O in HW Tree

## Add Redundancy for Slave Unit

If the slave is already configured and running in single mode you can add redundancy.

1. Right-click on the unit you want to add the redundancy and select **Redundancy > Add Redundant Unit**.
2. The icon changes to the redundancy icon and the text is updated with backup position within parenthesis (see [Figure 9](#)). The position for the backup unit will be calculated automatically (see also [Slave Redundancy](#) on page 28). The position of the backup module is given by the fixed offset of +64 to the position of the primary module.



3. Open the HW editor for the FCI unit and configure the parameter for redundancy in the settings tab.

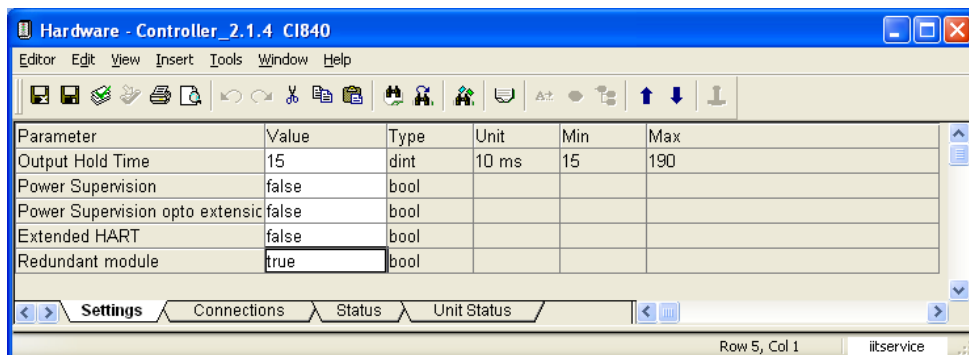


Figure 12. Configure Redundancy on Slave Unit

## Delete Redundancy for Slave Unit

If the slave unit is already configured and running in redundant mode you can delete redundancy.

1. Right-click on the unit you want to delete redundancy for and select **Redundancy > Delete Backup**.
2. The icon changes to the single icon and the position for the backup is deleted in the text.
3. Open the HW editor for the FCI unit and configure the parameter for redundancy in the settings tab.

## Insert a new Slave Type

To insert a new slave type that is not provided with the delivered hardware libraries, you have the following alternatives:

1. Use existing hardware definition file  
If you have a proven hardware definition file for the slave, you can create your own hardware library. Right-click **Hardware** and select **New Library** and

define the name for your new hardware library. To insert the hardware types right-click on **Hardware types**, select **Insert/Replace Hardware Type(s)** and select the existing hardware definition file from the disk to be inserted by having the filetype set to HWD.(hwd). All hardware types defined in the hardware definition file will be available in the new hardware library.

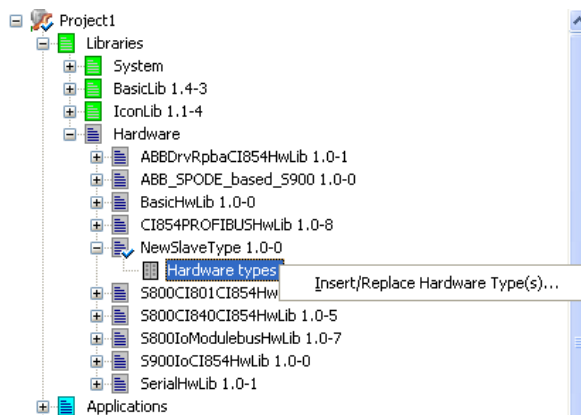


Figure 13. Insert Hardware Definition File for new Slave Type

## 2. Make GSD Import

If you only have the GSD file for the device you have to make a GSD Import to create the hardware types. The GSD Import is done with the Device Import Wizard. First insert a new hardware library for the device. Right-click **Hardware** and select **New Library**. Start the Device Import Wizard. Right-click on **Hardware types**, select **Insert/Replace Hardware Type(s)** and select the GSD file from disk to be imported by having the filetype set to PROFIBUS (\*.gs?). The Device Import Wizard will navigate you through the configuration. After finishing the Device Import Wizard the configured hardware types will be created in the hardware library.

## 3. Use Device Type Objects delivered with Device Library

The Device Library provides already integrated and proven Device Type Objects for PROFIBUS DP and PA devices. You can download the Device Type Objects to your system. For more information about Device Type Objects see [Device Management PROFIBUS & HART](#) on page 62.

## Configuration of PA-Devices

From Control Builder M point of view PROFIBUS PA-devices are seen like PROFIBUS DP-devices. Every PA-device needs to have a hardware definition file to get it configured on PROFIBUS. But additional configuration aspects have to be taken into account to get a proper engineering.

### Connecting PA-Devices via Linking Device LD 800P and SK3

Due to the fact that PA is using a different transmission technology than DP, PA-devices cannot be connected directly to PROFIBUS DP. A linking device has to be used.

The Linking Device LD 800P and SK3 is the interface between PROFIBUS DP and PROFIBUS PA. The LD 800P and SK3 is a transparent gateway. PA devices are seen as DP devices on the PROFIBUS DP. The LD 800P and SK3 supports all defined baudrates for PROFIBUS DP from 9.6 kbit/s up to 12 Mbit/s.

The GSD file for PA devices normally do not support higher baudrates. At a maximum 93.75 kbit/s are entered that is used by SK1. To get the PA devices running in AC 800M also with higher baudrates, you have two alternatives:

1. Make GSD import with Device Import Wizard  
If the parameter `Slave_Family` is set to 12 in the GSD file, a PA device is defined. The Device Import Wizard checks this parameter and enters automatically the settings for the higher baudrates in the HWD files for these devices. For more information about Device Import Wizard see [Insert a new Slave Type](#) on page 57.
2. Use Device Type Object delivered with Device Library  
Device Type Objects delivered with the Device Library always have the higher baudrates enabled to be used with LD 800P and SK3. For more information about Device Type Objects see [Device Management PROFIBUS & HART](#) on page 62.

### PROFIBUS Power Hub SK3

The PROFIBUS Power Hub is a Pepperl + Fuchs's new PROFIBUS DP/PA linking device, successor of the SK2 resp. The PROFIBUS Power Hub SK3, compared to

SK2 and LD 800P, provides enhanced PROFIBUS functionalities. This can be configured as a DP-slave and it supports slave redundancy.



When configuring with AC 800M and CI854, only the PROFIBUS Power Hub is used with active slave functionality as non-redundant or redundant. In a full transparent mode (slave address on DIP-switch of PROFIBUS Power Hub configured > 126), the communication of CI854 with the connected PA-slaves might sporadically become faulty or it may not work. This is because in a full transparent mode, the SK3 behaves similar to the SK2, which has a transparent watchdog and a retry limit equal to 1 as a default setting. For more information see "Linking Device SK2 from P&F" in [Table 5](#).

To use the PROFIBUS Power Hub as a slave device, an existing object type provided by Device Management is used. For more information about Device Type Objects see [Device Management PROFIBUS & HART](#) on page 62.

When configuring the PROFIBUS Power Hub as a slave device, the following settings for PA\_Bus\_Cfg\_Diag module should be configured:

Table 6. PA\_Bus\_Cfg\_Diag Module Settings

Watchdog Mode	Watchdog Time [100ms]	Retry Limit
Fixed	50	3 Retries



If the PROFIBUS Power Hub is configured as redundant on PROFIBUS DP, then the PROFIBUS Power Hub has to establish communication with the CI854, before communicating with the connected devices on PROFIBUS PA.

For more details about PROFIBUS Power Hub, refer *Device Management, Field IT - Linking Device Integration Pepperl+Fuchs Power Hub, 2PAA102122\** manual.

## Configuration of PROFIBUS Slave Address

PA devices have as default the position 126 configured. The position 126 can't be used for the normal cyclic communication. The position 126 is only used to identify new slaves on the PROFIBUS. You have to change the position to the correct value

that is planned in the HW tree in the Control Builder M. The configuration on the hardware unit is typically done via DIP switches. But PA devices typically do not have a DIP switch. In this case you can set the address via the PROFIBUS using the Web interface as described in [SetAddress](#) on page 77.

## Configuration via DP-V1

The configuration for PA-devices within the Control Builder M is only to get the device running on PROFIBUS with the cyclic DP-V0 communication. Only the I/O-communication can be configured. The internal behavior of the PA-device can only be configured acyclic via DP-V1 communication.

With the DP-V1 configuration you can change the operating mode of the device, define the fail-safe behavior, configure limit values, define filters and linearizations and adjust the calibration parameters. All this configurations may also affect the cyclic communication. If for example the operating mode is changed additional variables may be put on the PROFIBUS. As an example the temperature transmitter TF12 can be configured to provide only one temperature value, or two temperature values or also 3 temperature values. For the different operating modes specific sub-units are provided for TF12 within Control Builder M.

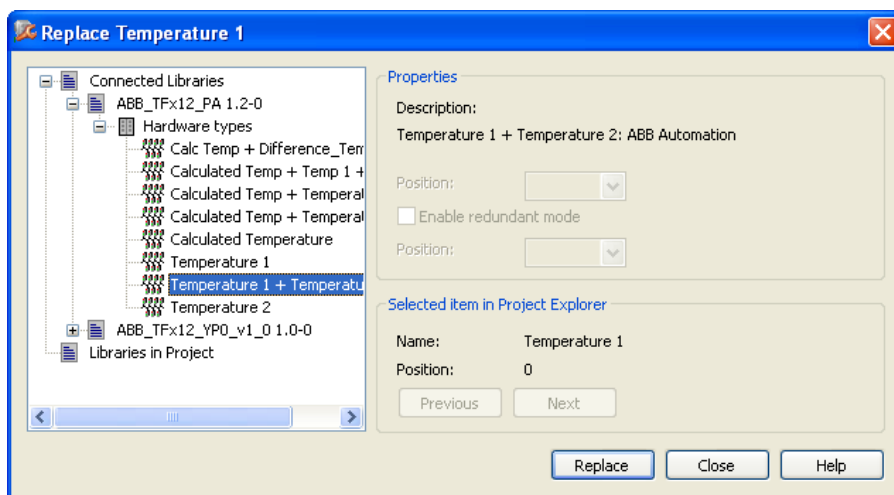


Figure 14. Select the Operating Mode for TF12



If you change the configuration of the PA device via DP-V1 you may also have to adapt the configuration within Control Builder M.

For DP-V1 configuration you can use a standalone tool directly connected to the PROFIBUS or the FDT/DTM concept that is directly integrated into the 800xA system. Support for FDT/DTM is given by use of the Device Type Objects delivered with the Device Library. For more information about Device Type Objects see [Device Management PROFIBUS & HART](#) on page 62.

## Device Management PROFIBUS & HART

Device Management PROFIBUS & HART offers a large portfolio of engineering tools and Device Type Objects to be used in the 800xA system. While CBM is used for the DP-V0 configuration of the devices, Device Management is mainly used for the DP-V1 configuration.

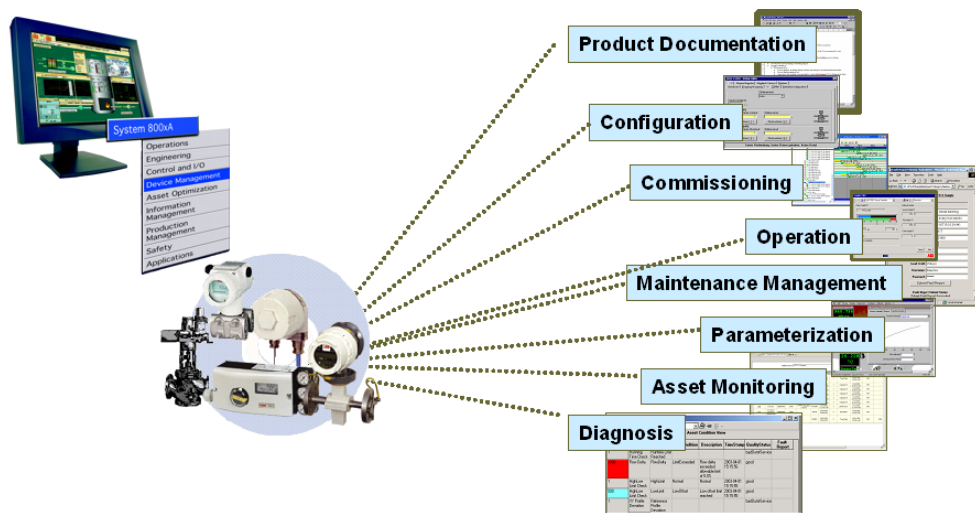


Figure 15. Components of the Device Management PROFIBUS & HART

The Device Type Objects are delivered with the Device Library. To get a new device integrated into your system just drag a device from the library, drop into the relevant structure, and use it in all its aspects. Device Libraries contain ABB and third party device types enhanced with the essential Aspects for

- Configuration
- Parameterization
- Commissioning/diagnosis
- Device documentation
- Asset monitoring
- Maintenance management (CMMS connectivity)
- DMS Calibration Integration.



The Device Type Object also includes a standardized and proven Hardware Definition file for the device packed in a hardware library. By use of the Device Type Object no individual import of the device with the Device Import Wizard is necessary. Furthermore you will benefit by generic solutions based on the standard Device Type Objects.

For more information see System\_800xA Device Management PROFIBUS & HART, Configuration, 3BDD011934\*.





---

## Section 4 Download and Online Mode

This section describes how to download and go online with a project accessing PROFIBUS DP data.

### Preconditions

Check the hardware configuration of the slave units and the PROFIBUS cabling especially the termination. Verify the DIP switches for setting the slave addresses. Verify that no duplicate addresses are configured.

Before you can download the AC 800M controller ensure that the processor module as well as the CI854/CI854A contain the correct firmware. Please refer to Control Builder M documentation and online help for further information.

### Downloading

If you click on the download button all configuration changes will be downloaded to the system. This includes the configuration for the controller, the CI854/CI854A and the PROFIBUS slave units.

### Online Changes

Depending on the configuration change, Control Builder M indicates a warning in the Compilation Summary window that the communication will be lost temporarily for the listed hardware units if you proceed with the download like shown in the following figure.

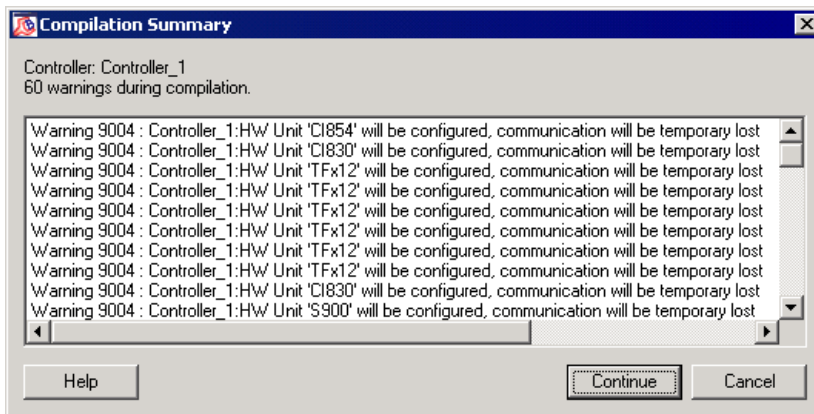


Figure 16. Warning: Loss of Communication during Download

With CI854/CI854A most changes can be downloaded without stopping the PROFIBUS communication. Slaves can be added, deleted or changed online.



The complete PROFIBUS communication will be stopped only if one of the following **bus parameters** are changed:

- Baudrate
- Node Address for CI854/CI854A
- HSA (Highest Station Address)
- Min Slave Interval.

In addition a warning will be indicated if the Watchdog Time is changed. This is done because some slaves do not support the online change for the watchdog time although they should.

Please note that also the PROFIBUS slave unit has to support the online change of bus parameters. Otherwise the connection for the specific slave unit will be disconnected for a short time.



The communication to a specific PROFIBUS slave unit is stopped if the slave configuration is changed and the slave doesn't support HCIR (Hot Configuration in Run).

## Automatic Calculation of PROFIBUS Master Parameters

During download a calculation of the PROFIBUS master parameters takes place. Depending on the selected baudrate the settings will be recalculated. The

calculation uses the actual values as an input. Based on the configured slaves with their input and output data it calculates the new values.

If the value of a parameter is changed it will be indicated in the message pane and the compilation summary window. The new calculated values are written back into the settings tab for CI854/CI854A and stored in the project as shown in [Figure 17](#).



If a slave does not support the selected baudrate, the system automatically selects the next lower baudrate supported by all slaves and downloads this baudrate into the controller.

The following figure shows the different steps for the automatic PROFIBUS master parameter calculation.

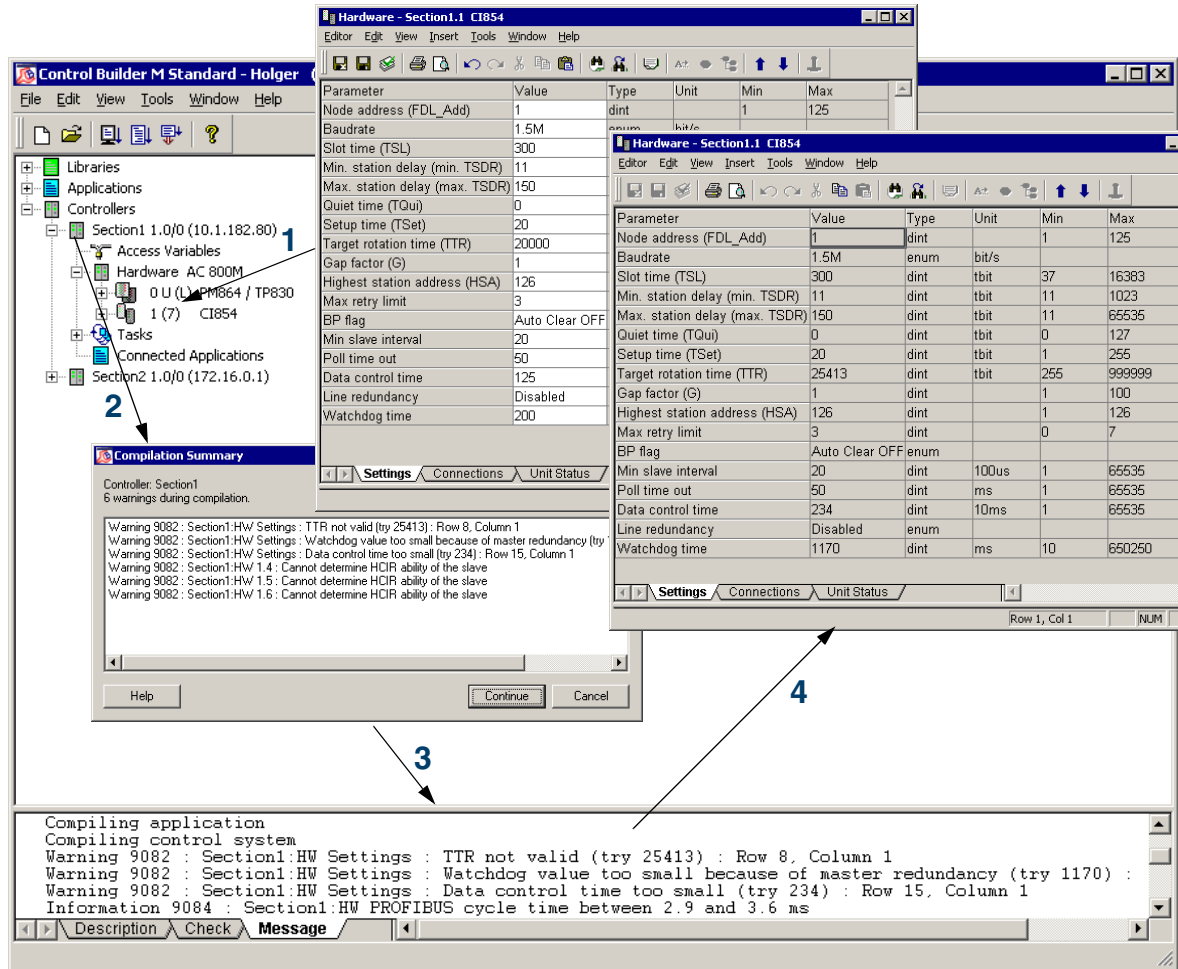


Figure 17. PROFIBUS Master Calculation during Download

## Logfile

In addition to the write back of the calculated PROFIBUS parameters into the settings tab the calculation result with some extra information will be sent to a text file named Profibus\_DPVI\_Calculation.txt. This logfile is placed in the logfile directory, called LogFiles, of Control Builder M. The text file includes the current

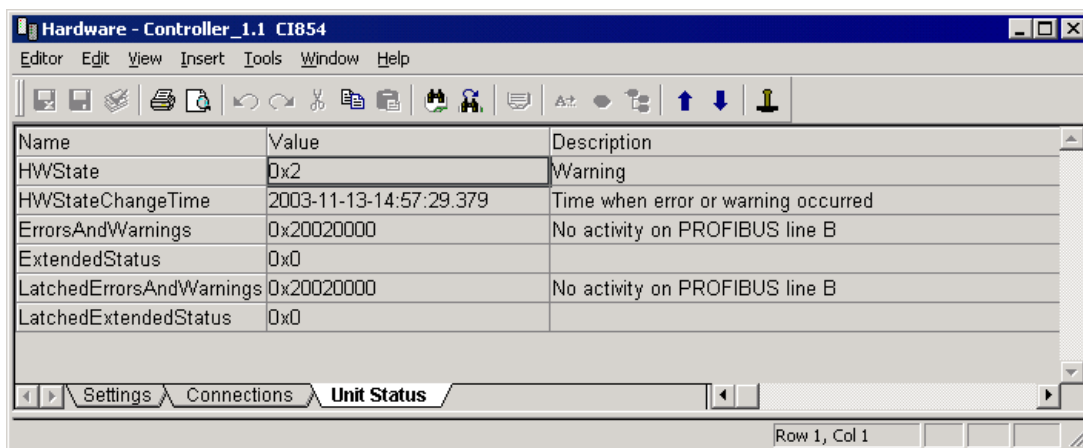
and previous calculations up to a size of 1 Mbyte. The current calculation is placed at the end of the file.

If configuration or parameter data belonging to at least one slave or to the CI854/CI854A master unit is changed then the complete downloaded configuration and parameter data belonging to the CI854/CI854A master unit and all connected slaves will be written into this file.

The logfile contains also internal calculated data that are not available in Control Builder M. For the normal operation this logfile is not needed. It is mainly used for service purpose in the case of an error.

## Online Data

Choose the Unit Status tab (please refer to [Figure 18](#)) to get online information on the hardware status of the CI854/CI854A unit. For details please refer to the Control Builder M documentation and [Status Handling](#) on page 30.



Name	Value	Description
HWState	0x2	Warning
HWStateChangeTime	2003-11-13-14:57:29.379	Time when error or warning occurred
ErrorsAndWarnings	0x20020000	No activity on PROFIBUS line B
ExtendedStatus	0x0	
LatchedErrorsAndWarnings	0x20020000	No activity on PROFIBUS line B
LatchedExtendedStatus	0x0	

Figure 18. Unit Status Tab for CI854/CI854A

## Behavior of I/O and Communication

### Insertion and deletion of I/O units

In case of insertion and deletion of I/O units the corresponding outputs are set to zero.

### Connection Error

The communication between the CI854/CI854A master and the slave is monitored by both units, the master and the slave. In case of an error, specific reactions on the master and the slave side will take place. Please refer also to [Monitoring the DP-V0 Communication](#) on page 25.

If the CI854/CI854A master unit detects the loss of communication with the slave unit the error “Connection down” will be indicated for the specific slave. The AC 800M controller stops the copying of input data and activates ISP (Input Set as Predetermined) control for the related variables. During “Connection down” the status for Error/Warning and Alarm/Event will not change. If the connection gets re-established the status will be updated.

If the slave unit detects the loss of communication with the master unit it activates the OSP (Output Set as Predetermined) control for the related output channels.

A connection error can be caused by reconfiguration or a temporary error such as cable error. If a temporary error is corrected, the connection will be reestablished automatically.



In case of a connection error, for example due to a disconnected cable, the CI854/CI854A will keep the current values for all inputs belonging to the disturbed slave unit.

### System Error

On CI854/CI854A two watchdogs are implemented that have to be triggered otherwise the module switches into a safe state mode and stops the communication on the PROFIBUS. The connections to all connected slave units get interrupted. ISP control on the AC 800M controller and OSP control on the slave units will get active. To get the CI854/CI854A back into the normal operating mode you have to

reset the controller, in case of CI854A you also can perform a hot swap of the module instead.

One of these watchdogs is implemented in the hardware of CI854/CI854A. It has to be triggered by the firmware every 50 ms. The other watchdog is implemented in the firmware of CI854/CI854A and monitors the communication between the controller and the CI854/CI854A via the CEX-bus. This watchdog has to be triggered by the controller every second.





---

## Section 5 Web Interface

### How to use the Web Interface

The CI854/CI854A PROFIBUS interface provides some extra functionality via a Web-Interface. This functionality is mainly used for commissioning or for service purpose in the case of an error.

The Web Interface is accessible via a standard web browser like Microsoft Internet Explorer or Firefox. To start the Web Interface enter the IP address of the controller in the address bar of the browser and press enter. Make sure that the browser settings for the connection (for example no proxy server for the controller address) is OK and that the controller is accessible from the PC. Check that TCP/IP forwarding is enabled on Connectivity Servers.



To open the WebServer interface, ensure that **Automatically detect settings** is disabled in the LAN settings of the Internet Explorer.

For more information see the configurations described in *System 800xA Network Configuration manual (3BSE034463\*)*. If everything is correct, the login window appears.



Figure 19. Login

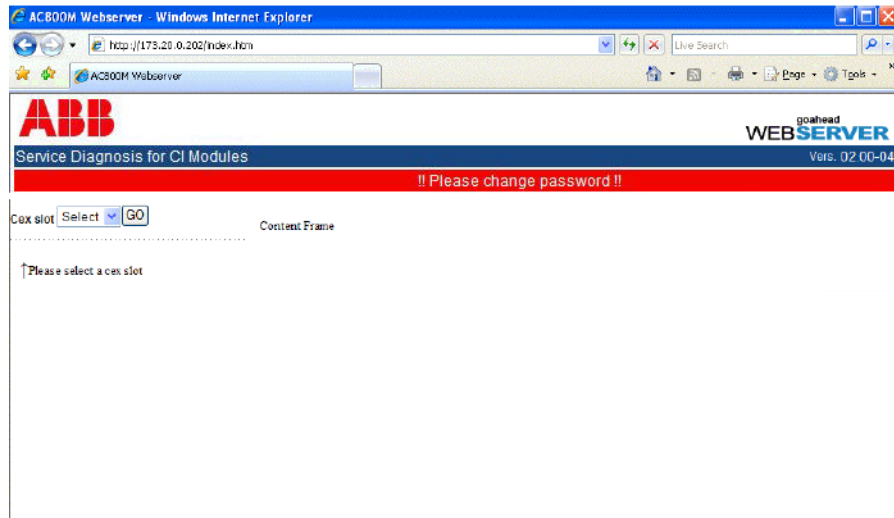


The default password is *ac800m*. Replace this with a password that conforms with your organization's security policy at the first possible opportunity. Failure to replace the default password makes the system susceptible to unauthorized access.

Refer to the Password Security topic in *System 800xA Administration and Security (3BSE037410\*)* for recommendations on establishing a password security scheme.

Enter user name and password to get access to the homepage of the controller. The default user is *service* and the default password is *ac800m*. To change the password

please refer to [Change Password](#) on page 91.



*Figure 20. Starting the Web Interface for CI854/CI854A Service Diagnosis*

After starting the Web Interface you have to select the CI854/CI854A you would like to communicate with. Enter the Cex slot number for the relevant CI854/CI854A in the selection box to start the communication.

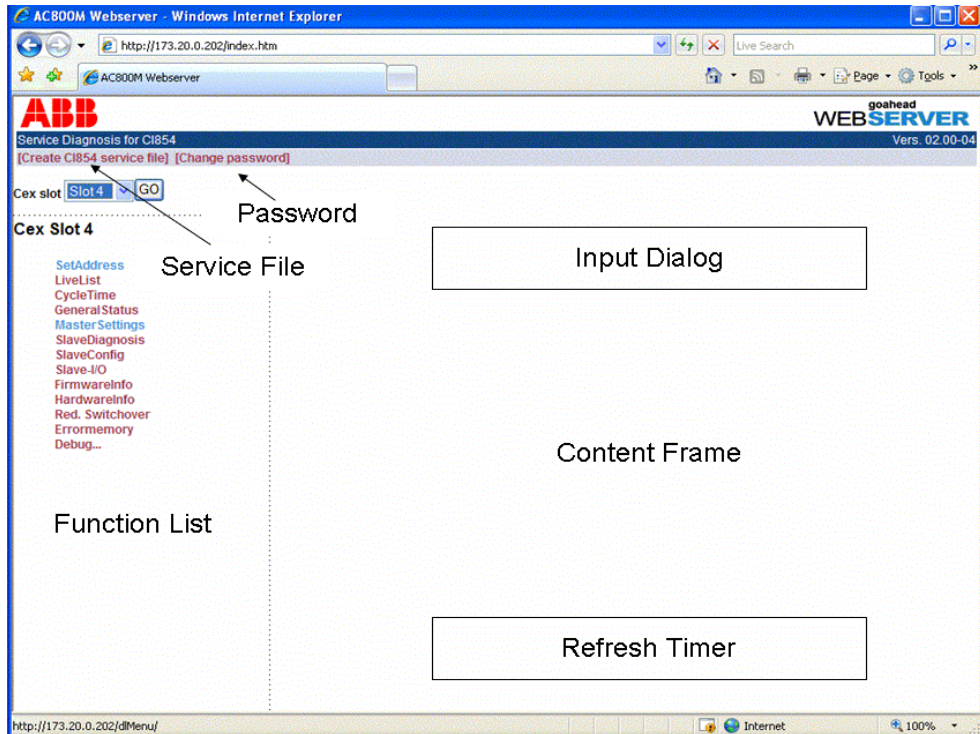


Figure 21. Functional overview of the Service Diagnosis

The browser window is divided into two frames. While in the left frame a menu with several functions is shown the content to this functions is presented in the right frame, the content frame.

The presentation of the content is function specific. For some functions only a simple printout of the available data is done. Some other functions need an additional input before the function can be operated. For those a specific input dialog opens at the upper area of the content frame.

For some specific functions that only read data an automatic refresh to update the data is supported. For those a timer can be activated. The timer is shown at the lower area of the content frame. The timer offers the possibility to change the update cycle time.

In addition the Web Interface supports the functionality to create a service file with the most needed information in case of a support action. This can be done by selecting “Create CI854 service file”.

The specific functions of the Web Interface are described in the following chapters.

## SetAddress

Use this function to change the address of a connected PROFIBUS slave device.

```

Set Address CEX Slot8
You can change the Address of connected PROFIBUS Devices.

Enter actual Address to be changed: 44
Enter the new Address           : 100
[Apply] [Reset]
Press Apply to perform the Change

```

---

SERVICE WAS SENT, SUCCESS SEE LIVELIST

*Figure 22. SetAddress*

In the response you will get the result of the action. The result in case of an error or a successful operation will be indicated as follows:

Successful operation: SERVICE WAS SENT, SUCCESS SEE LIVELIST  
 Error: ERROR CHANGING SLAVE ADDRESS

In case of a successful operation please check that the slave is now entered with the new address in the livelist. Use the function **LiveList** to verify this.



The Reset button only resets the content of the input field.

In the case of an error please check that the slave is connected to the PROFIBUS and that it supports this service.



Check that only one slave with address 126 is connected at a time. If you have several new PA devices from the shelf all with the default address 126, then connect them one after the other to the PROFIBUS and change the address before connecting the next device.

## LiveList

Use this function to see which devices are connected to the PROFIBUS.

The screenshot shows the ABB AC800M Webservice Web Interface in a Windows Internet Explorer browser. The page title is "Service Diagnosis for CI854" and the version is "02.00-04". The interface includes a navigation menu on the left with options like "SetAddress", "LiveList", "CycleTime", "GeneralStatus", "MasterSettings", "SlaveDiagnosis", "SlaveConfig", "Slave-I/O", "FirmwareInfo", "HardwareInfo", "Red. Switchover", "Errormemory", and "Debug...". The "LiveList" option is selected. The main content area displays a table of connected devices:

Address	Type
0	Master
1	Master
2	Slave
3	Slave
4	Slave
5	Slave
6	Slave
7	Slave
8	Slave
9	Slave
10	Slave
13	Slave
20	Slave
30	Slave
31	Slave
40	Slave
41	Slave
45	Slave
46	Slave
47	Slave
48	Slave
49	Slave
50	Slave
53	Slave
54	Slave
55	Slave
56	Slave

At the bottom of the interface, there is a "Timer" section with the text "Refreshes the frame above all ... seconds". It includes a dropdown menu set to "10 sec" and "Start" and "Stop" buttons.

Figure 23. LiveList

The devices are listed together with the type information telling if it is a master or slave device sorted by the current node address found on the PROFIBUS. By activating the Refresh Timer the Live List can be updated automatically.



All devices, masters and slaves, connected to the PROFIBUS are shown, independently of it whether they are configured and in data exchange or not.

## CycleTime

Use this function to read the current measured cycle time for the running PROFIBUS.

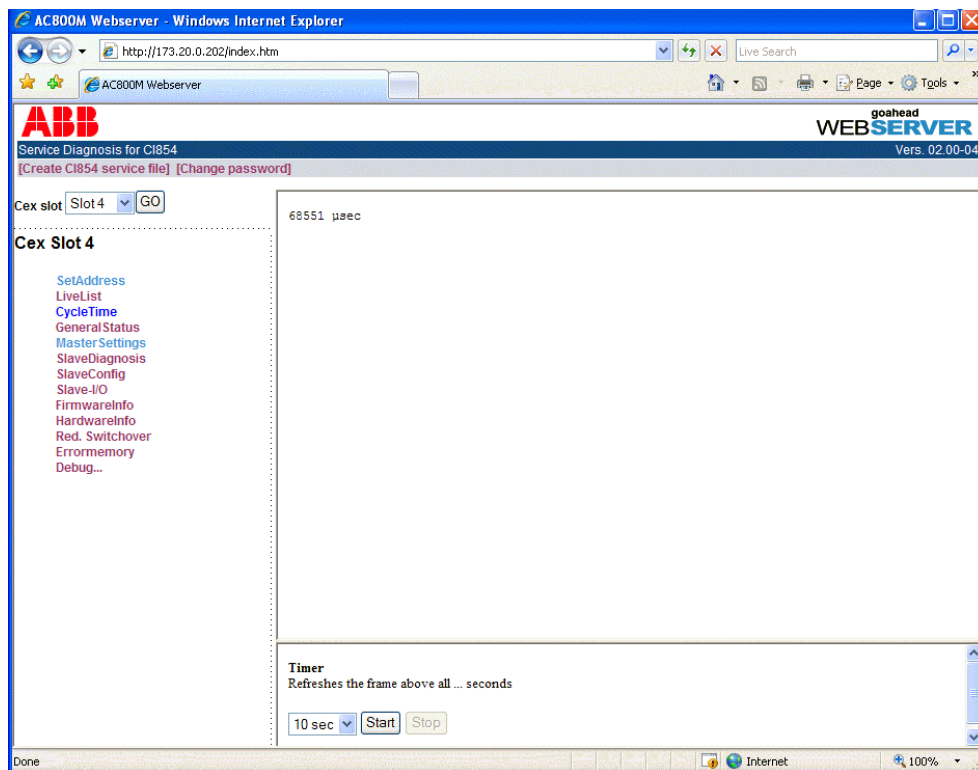


Figure 24. CycleTime

The value for the cycle time is indicated in  $\mu\text{sec}$ . By activating the Refresh Timer the cycle time can be updated automatically.

## GeneralStatus

Use this function to get a general overview about the running PROFIBUS.

```

Actual Status of :
Master: Active RED Master OK
Slaves: Some are OK
Line A: OK
Line B: OK

Master Status Information:
Master state
  Master state           = OPERATE
  Ident number           = 1706 (0x06aa)
  DDLM/User interf. hardw. vers. = 0
  DDLM/User interf. firmw. vers. = 84
  User hardware version   = 0
  User firmware version   = 0

Slaves in data exchange:
 010 011 012 013 014 015 016 017 018 019 020 021 022 023 024 025 026 027
 028 029 032 033 034 035 036 037 038 039 040 041 042 043 044 050 060

Slaves with new diagnostic data:
 010 040 060

Slaves loaded:
 010 011 012 013 014 015 016 017 018 019 020 021 022 023 024 025 026 027
 028 029 032 033 034 035 036 037 038 039 040 041 042 043 044 050 060

```

*Figure 25. GeneralStatus*

In the content frame you will get information about:

- Master
  - Selected master is active (primary) or passive (backup or not configured); the communication to the redundant master is ok or disturbed.
  - Status of PROFIBUS Line A and B.
  - Status of PROFIBUS master. It can be in Stop, Clear or Operate mode.
- Slaves
  - List of all slaves that are in DataExchange.
  - List of all slaves that have diagnostic data.
  - List of all slaves that are configured on CI854/CI854A.



## MasterSettings

Use this function to see which settings are currently loaded in the CI854/CI854A PROFIBUS master unit. In the content frame you will get the following information:

```

Master parameter
State = bus parameter available
Length of bus parameter = 66
Master address = 1
Baudrate = 1.5 Mbps (bit time = 0.66 µs)
Slot time = 650 (bit time)
Min. T_sdr = 11 (bit time)
Max. T_sdr = 150 (bit time)
Quit time = 0 (bit time)
Setup Time = 150 (bit time)
Target Rotation Time = 55611 (bit time)
Gap Update Factor = 1
Highest station address = 126
Max retry limit = 3
BP flag = Auto Clear OFF
Min slave interval = 2000 µs
Polling timeout = 50 ms
Data control time = 10000 ms
Length of user data = 0
Mastername (class 2) = ABB CI854 C2 Master
User data =
Redundancy parameter = 0x01 0x01 0x00 0x01 0x00 0x01 0x00 0x00 0x00
                    0x00 0x00 0x00 0x00 0x00 0x00 0x00

```

Figure 26. MasterSettings

To get the current watchdog time please select **SlaveConfig**.

## SlaveDiagnosis

Use this function to see which diagnostics are currently present in the slave unit. In the input dialog enter the node address for the slave device you would like to read the diagnostic data for. In the content frame you will get the following information:

```

SlaveDiagnosis CEX Slot2
You can read all Slave Diagnosis Data presently active in the Slave

Enter Station Address for Slave: 

Press Read to update the Information

```

---

```

State
Stations state   = Ext_Diag  WD_On
Master address   =      1
Ident Number     = 1234 (0x04D2)
Device diagnostic: 0x82 0x00 0x00 0x00 0x00 0x00 0x00 0x00
Ident diagnostic:
Diagnostic bytes : 01 09
Channel diagnostic:
Ident number 01, In/Output, Channel 02, type: bit
Type of error: wire failure
Channel diagnostic:
Ident number 09, Output, Channel 01, type: word
Type of error: number 31
Channel diagnostic:
Ident number 09, Output, Channel 02, type: word
Type of error: number 31
Channel diagnostic:
Ident number 09, Output, Channel 03, type: word
Type of error: number 31
Channel diagnostic:
Ident number 09, Output, Channel 04, type: word
Type of error: number 31

```

*Figure 27. SlaveDiagnosis*

If Ext\_Diag\_Overflow is set (shown in the stations state when active) then the slave unit has currently more diagnostics than it can indicate via the PROFIBUS diagnosis. In this case the number of active diagnosis bytes exceeds Max\_Diag\_Data\_Len that is defined in the GSD file of the slave.

For the interpretation of “Device diagnostic” you have to compare the definitions for UnitDiagBit and UnitDiagArea in the slave GSD-file.

With the “Ident diagnostic” each module is indicated with its slot number if the module has currently diagnostic data. In the example above diagnostics are indicated for the modules with the numbers 1 and 9.

With “Channel diagnostic” the active channel errors are listed. Each error is indicated with two lines of information. The first line shows some general

information. These are the slot number of the module, the direction if the channel is an input or output, the channel number on the module and the type of the channel. The channel type can be for example word (analog I/O) or bit (binary I/O). The second line specifies the type of the channel error. If the current active error is defined by the PROFIBUS standard then the error will be indicated with the correct message like "Wire failure" as shown in the example. Otherwise only the error-code will be presented. In this case you have to check the definitions for Channel\_Diag in the slave GSD-file. The example shows the current error code 31 "HART comm. error" for the analog input module of S900 that is defined by the entry *Channel\_Diag(31) = "HART comm. error"* in the S900 GSD file.

## SlaveConfig

Use this function to get the current loaded configuration and parameter data for the slave device. In the input dialog enter the node address for the slave device you would like to read the data for. Press the Read button to update the information.

```
SlaveConfig CEX Slot2
You can read the Slave Configuration Data loaded in CI854 and presently active
in the Slave

Enter Station Address for Slave: 

Press Read to update the Information
```

*Figure 28. Input dialog for SlaveConfig*

In the content frame the parameter and configuration data downloaded to CI854/CI854A are presented for the selected slave. Also the configuration data actual present in the slave unit are shown.

```

Slave Data loaded in CI854:
PARAM_HEADER
00 98 80 00 00 00 00 00 00 00 00 00 00 00 00 00 00 00 00 00 .....

PRM_DATA
Station Status = Locked WD_on
WD Time factors = 250, 2 -> WD Zeit = 5.000 s
Min T_sdr      = 11 (bit time)
Ident number   = 1234
Group ident    = 0x01
User Data      : 0x00 0x00 0x00 0x41 0x01 0xC0 0x05 0x08 0x48 0x48 0x48
                  0x00 0x00 0x00 0x00 0x00 0x00 0x40 0x40 0x40 0x40 0x00
                  0x08 0x08 0x08 0x08 0x00 0x40 0x40 0x40 0x40 0x00 0x40
                  0x40 0x40 0x40 0x00 0x00 0x00 0x00 0x00 0x00 0x40 0x40
                  0x40 0x40 0x00 0x48 0x48 0x48 0x48 0x00 0x00 0x00 0x00
                  0x00 0x00 0x48 0x48 0x48 0x48 0x00 0x48 0x48 0x48 0x48
                  0x00 0x00 0x00 0x00 0x00 0x00 0x48 0x48 0x48 0x48 0x00

CFG_DATA
00 2B 01 02 C1 00 00 04 00 81 00 08 C1 00 00 04 .+.
81 43 1B 81 43 1B 00 41 43 0B 81 43 1B 00 C1 00 .C..C..AC..C....
00 04 C1 00 00 04 00 C1 00 00 04 .....

CFG_DATA presently active in Slave:
00 2B 01 02 C1 00 00 04 00 81 00 08 C1 00 00 04 .+.
81 43 1B 81 43 1B 00 41 43 0B 81 43 1B 00 C1 00 .C..C..AC..C....
00 04 C1 00 00 04 00 C1 00 00 04 .....

```

Figure 29. SlaveConfig



If you have problems to get the slave into DataExchange, please verify that the configuration data on CI854/CI854A and on the slave unit itself are identical. In this case verify the hardware configuration on the slave itself with the hardware configuration in Control Builder M.

## Slave-I/O

Use this function to read the input and output data for a specific slave unit. In the input dialog enter the node address for the slave device you would like to read the data for. Press the Read button to update the information.

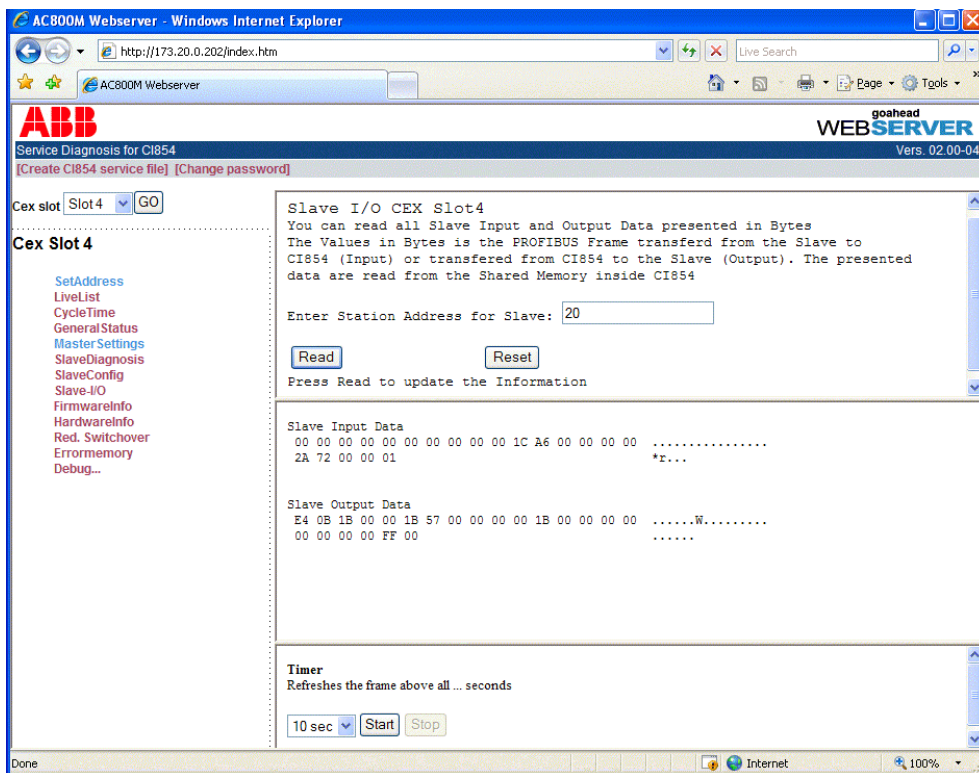


Figure 30. Slave-I/O

By activating the Refresh Timer the I/O-data can be updated automatically.

## FirmwareInfo

Use this function to display the current firmware information of CI854/CI854A.

```
Firmware      : Version 05.46 from 2006.06.08
-BOOT        : Version 03.04 from 2003.10.20
-INIT        : Version 05.21 from 2004.04.20
-PROC        : Version 05.46 from 2006.06.08
-DP-Stack    : Version 07.41 from 2005.11.02
```

*Figure 31. FirmwareInfo*

## HardwareInfo

Use this function to display the current hardware information of CI854/CI854A.

```
Module Type   : CI854K01
Order Number  : 3BSE030220R1
Serial Number : 00000012
HW Change Index : 0205
NL Number     : 000000
Inspection Station : 99
Inspection Date : 20040324
Product Revision : D
```

*Figure 32. HardwareInfo*



The Module Type for both CI854 and CI854A is indicated as CI854K01. To differ between CI854 and CI854A the HW Change Index has to be considered. If the HW Change Index starts with 02 then the module type is CI854AK01. 01 indicates a CI854K01. In the example a CI854A is used.

## Red.Switchover

Use this function to perform a redundancy switchover of a connected PROFIBUS slave device. In the input dialog enter the node addresses for primary and backup slave you would like to perform the switchover for. Press the Apply button to perform the switchover.

```
Red. Switchover CEX Slot2
You can initiate a Redundancy Switchover for a redundant Slave

Enter Address of Primary Slave: 
Enter Address of Backup Slave : 

 
Press Apply to perform the Switchover
```

---

SERVICE WAS SENT

*Figure 33. Red. Switchover*

In the response you will get the result of the action. The result in case of an error or a successful operation will be indicated as follows:

Successful operation:      SERVICE WAS SENT

Error:                        Error performing function

In case of a successful operation it has to be checked on the slave itself that the switchover took place.



The function Redundancy Switchover only works with slaves that support the PNO slave redundancy.

# Errormemory

This information is of relevance only for the ABB service engineer in case of an error!

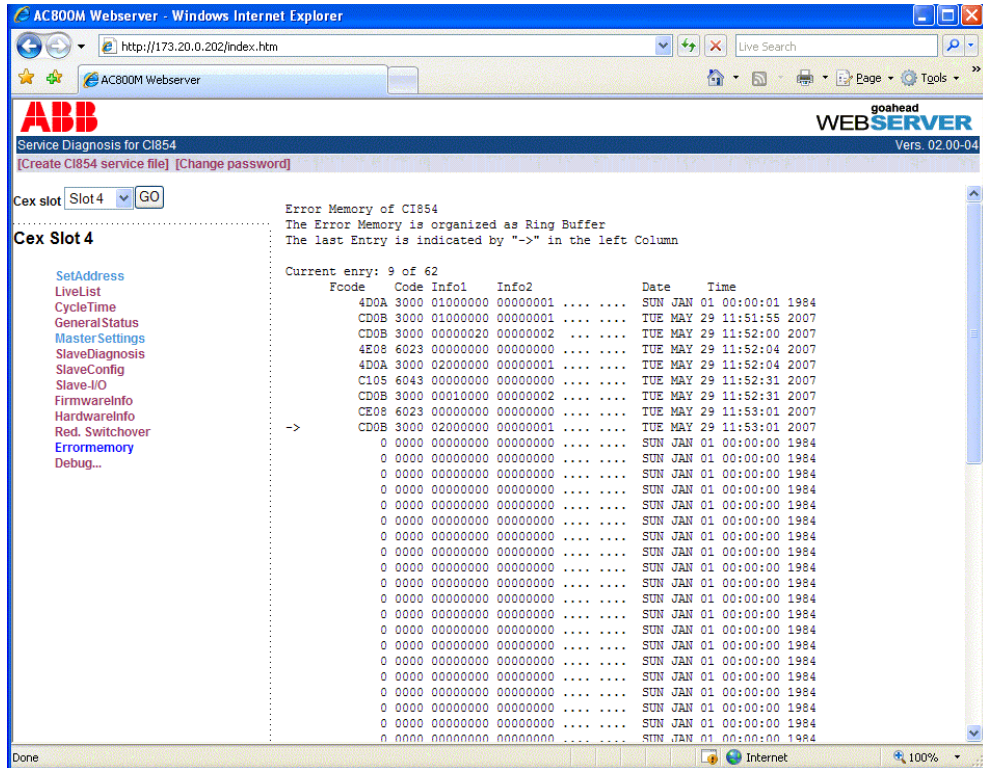


Figure 34. Errormemory



If you are supposed to provide the Errormemory then please provide it always as a textfile and not as a screen dump. Preferable use the "Create CI854 service file" functionality for that.



## Debug, DMJ Buffer

With Debug<< a submenu can be started. This information is of relevance only for the ABB service engineer in case of an error! As the most useful information the DMJ Buffer is mentioned here. The DMJ Buffer is a journal memory and very helpful in addition to the Errormemory. To get access to the DMJ Buffer select Debug <<, DMJ and then BUFFER. In the Input Dialog you do not have to enter anything. Just select the Read button.

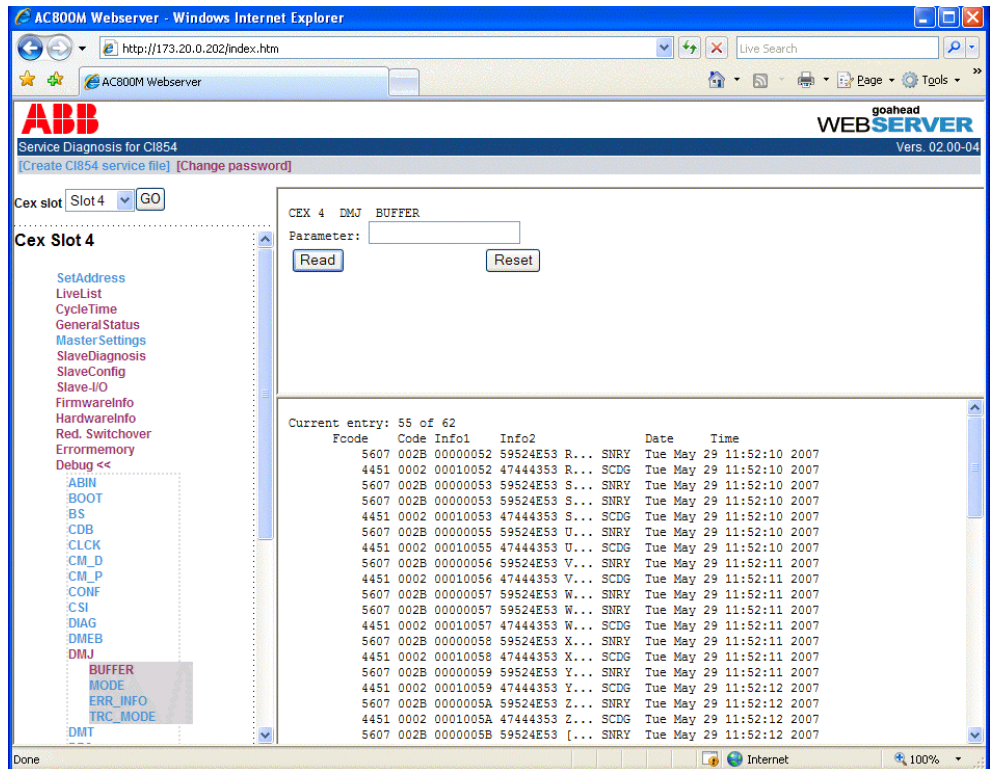


Figure 35. DMJ Buffer



If you are supposed to provide the DMJ Buffer then please provide it always as a textfile and not as a screen dump. Preferable use the “Create CI854 service file” functionality for that.

## Service File

The Web Interface supports the functionality to automatically collect the most needed information in case of a support action into one file. This service file contains all information that is accessible via the function list instead of slave specific data.

To create the service file select “Create CI854 service file” in the upper left corner of the browser window. A dialog opens to select the CI854 you would like to collect the data for. To have all information in place always select all modules.

**Please select the CI854 you want to include**

CEX Slot 1
  CEX Slot 2
  CEX Slot 3
  CEX Slot 4
  CEX Slot 5
  CEX Slot 6  
 CEX Slot 7
  CEX Slot 8
  CEX Slot 9
  CEX Slot 10

Figure 36. Select CI854 for service file

Select Create to start the download. A download window opens and assists you to write the service file to disk.

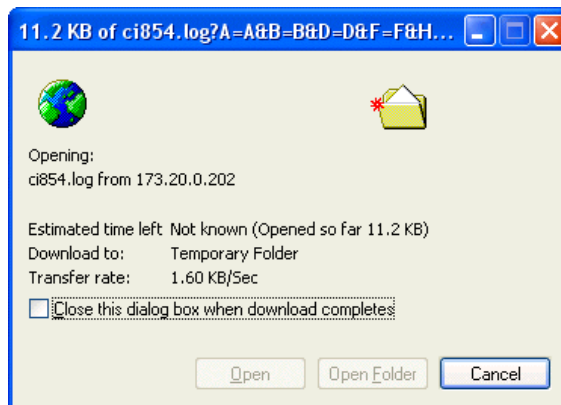


Figure 37. Downloading service file

## Change Password



The default password is *ac800m*. Replace this with a password that conforms with your organization's security policy at the first possible opportunity. Failure to replace the default password makes the system susceptible to unauthorized access.

Refer to the Password Security topic in *System 800xA Administration and Security (3BSE037410\*)* for recommendations on establishing a password security scheme.

The webserver has the default password *ac800m*. To change it select “Change password”. A dialog appears. Enter the current and the new password and confirm the new password. Then press Submit to store the new password in the controller. A successful operation is confirmed with the message “Change password succeeded”.

When a user login for the first time, the application browser displays a caution to change the password as shown in the [Figure 38](#).



The caution is displayed with every login, until the password is changed from the default to a new password.

The screenshot shows the ABB goahead WEB SERVER interface. At the top left is the ABB logo, and at the top right is the goahead WEB SERVER logo. Below the logo is a blue header bar with the text "Service Diagnosis for CI Modules" and "Vers. 02 00-04". A red banner across the top of the main content area contains the text "!! Please change password !!". Below the banner are two links: "[Create service file]" and "[Change password]". The main content area is titled "Change password" and contains a "Cex slot" dropdown menu with a "GO" button. Below the dropdown is a message: "↑ Please select a cex slot". The form includes three password input fields: "Current password:", "New password:", and "Confirm new password:". Each field contains six black dots. At the bottom of the form are "Submit" and "Cancel" buttons.

Figure 38. Change Password

The new password has to have at least one and at a maximum 31 characters. Allowed characters are “a...z”, “A...Z”, “0...9” and “\_”.

The new password will be stored nonvolatile in the AC800M controller and kept active after reset. To reset the password to default remove the battery and disconnect the power supply from the controller for at least 5 seconds.



If the password is reset to default, the password must be changed from the default value.

---

# Index

## A

Acyclic Data Communication 26  
Alarm on PROFIBUS 26  
Alarms and Events 36  
Auto Clear 24, 49

## B

Backup 41 to 42, 57  
Baudrate 51

## C

Class 1 Master 21, 23  
Class 2 Master 23  
Clear 24  
Configuration 39  
    Insert Master Unit 39  
    Insert Slave Unit 53  
    Online Changes 65  
    PA-Devices 59  
Connection Error 70  
Cycle Time 79  
Cyclic Data Communication 21

## D

Device Import Wizard 23, 37, 57 to 59  
Device Library 58 to 59, 62  
Device Management 62  
Device Type Object 58 to 59, 62  
Diagnostics 22, 35  
DP-V0 21  
DP-V1 26, 61  
DTM 62

## E

ErrorsAndWarnings 31  
ExtendedStatus 31

## F

FDT 62  
Freeze 24

## G

GSD File 58  
GSD Import 58

## H

Hardware Definition File 57  
Hardware Library 39  
HCIR 36, 66  
Hot Swap 36  
HW Editor 42

## I

ISP Control 70

## L

LD 800P 52, 59  
Linking Device 13 to 14, 52 to 53, 59 to 60  
LiveList 78  
Logfile 68

## M

Master Parameters  
    Automatic Calculation 50, 66  
    Default Values 51

Optimized Settings 50, 66  
Special Settings 52  
Multi Master Systems 25

Web Interface 73

## O

Online Data 69  
Operate 24  
OSP Control 70

## P

PA-Devices 59  
PROFIBUS Address  
  Master Unit 44  
  Slave Unit 60, 77

## R

Redundancy 27  
  Backup Position 40, 54  
  Line 29  
  Master Unit 27, 41 to 42  
  Slave Unit 28, 56 to 57  
RLM 29, 52

## S

Settings Tab 43  
SK2 52 to 53, 59 to 60  
SK2 and SK3 13, 53  
SK3 13, 52 to 53, 59 to 60  
Status Handling  
  Master Unit 30  
  Slave Unit 35  
Stop 23  
Sync 24

## T

TTR 26

## W

Watchdog Time 28, 45

---

# Revision History

## Introduction

This section provides information on the revision history of this User Manual.



The revision index of this User Manual is not related to the 800xA 5.1 System Revision.

## Revision History

The following table lists the revision history of this User Manual.

Revision Index	Description	Date
-	Published for 800xA 5.1 Rev A	May 2011
A	Published for 800xA 5.1 Rev D	December 2013

## Updates in Revision Index -

The following table shows the updates made in this User Manual for 800xA 5.1 Rev A.

Updated Section/Sub-section	Description of Update
Section 3 Configuration/PROFIBUS Power Hub SK3	A new subsection <i>PROFIBUS Power Hub SK3</i> is added.
Section 5 Web Interface/How to use the Web Interface	Added critical Caution notes for replacing default factory shipped passwords.

## Updates in Revision Index A

The following table shows the updates made in this User Manual for 800xA 5.1 Rev D.

Updated Section/Sub-section	Description of Update
Section 2 Functional Description	The watchdog time settings has been modified when there is a disturbance in redundant and non-redundant slave.
How to use the Web Interface	A caution is provided to disable Automatically detect settings in the LAN settings of the Internet Explorer





# Contact us

## **ABB AB**

### **Control Technologies**

Västerås, Sweden

Phone: +46 (0) 21 32 50 00

e-mail: [processautomation@se.abb.com](mailto:processautomation@se.abb.com)

[www.abb.com/controlsystems](http://www.abb.com/controlsystems)

## **ABB Automation GmbH**

### **Control Technologies**

Mannheim, Germany

Phone: +49 1805 26 67 76

e-mail: [marketing.control-products@de.abb.com](mailto:marketing.control-products@de.abb.com)

[www.abb.de/controlsystems](http://www.abb.de/controlsystems)

## **ABB S.P.A.**

### **Control Technologies**

Sesto San Giovanni (MI), Italy

Phone: +39 02 24147 555

e-mail: [controlsystems@it.abb.com](mailto:controlsystems@it.abb.com)

[www.abb.it/controlsystems](http://www.abb.it/controlsystems)

## **ABB Inc.**

### **Control Technologies**

Wickliffe, Ohio, USA

Phone: +1 440 585 8500

e-mail: [industrialitsolutions@us.abb.com](mailto:industrialitsolutions@us.abb.com)

[www.abb.com/controlsystems](http://www.abb.com/controlsystems)

## **ABB Pte Ltd**

### **Control Technologies**

Singapore

Phone: +65 6776 5711

e-mail: [processautomation@sg.abb.com](mailto:processautomation@sg.abb.com)

[www.abb.com/controlsystems](http://www.abb.com/controlsystems)

## **ABB Automation LLC**

### **Control Technologies**

Abu Dhabi, United Arab Emirates

Phone: +971 (0) 2 4938 000

e-mail: [processautomation@ae.abb.com](mailto:processautomation@ae.abb.com)

[www.abb.com/controlsystems](http://www.abb.com/controlsystems)

## **ABB China Ltd**

### **Control Technologies**

Beijing, China

Phone: +86 (0) 10 84566688-2193

[www.abb.com/controlsystems](http://www.abb.com/controlsystems)

Copyright © 2003-2013 by ABB.

All rights reserved.

3BDS009030-510 A

Power and productivity  
for a better world™

