





Need to know
HOW TO
apply

**THE NEXT STEP:
HOW TO APPLY**

If you've found the course that's right for you, it's time to consider the finer details. Here's where you'll find everything you need to know about making an application, and if you have any further questions, all our essential contact details. Before you know it, we'll be welcoming you through the doors...

Need to know: Making an application

So, you've read the course descriptions, considered your options and decided that the RVC is the place for you. Congratulations. The next step is your application...

GO THROUGH UCAS

Applications for undergraduate degree courses based at the Royal Veterinary College must be directed through the Universities and Colleges Admissions Service (UCAS), apart from North American graduate applicants to the accelerated BVetMed course who must apply through VMCAS.

For all full-time undergraduate courses at universities and colleges in the UK, students must apply online at www.ucas.com. You will have to pay a fee when you apply. In [2014] the fee was [£23] to apply to more than one course, university or college, or [£12] to apply to only one course at one university or college.

THERE ARE TWO WAYS OF APPLYING:

- 1) If you're applying through a school, college or centre, you'll need to obtain a 'buzzword' from the centre you're applying through. This buzzword links your application to your centre so that your referee can write and attach their reference. Once you've completed your application, you send it to your referee who adds the reference, checks and approves your application and sends the completed application to UCAS.
- 2) Applying as an individual. The reference section needs to be completed before you can send your application to UCAS.

If you're applying independently but would like your reference to be written by a registered school, college or other organisation, you can link your application to the application centre by selecting the option 'Ask a registered school, college or organisation to write your reference only' and entering the buzzword obtained from the centre. This means that the centre can write a reference for you but they will not be involved in the rest of your application.

If your referee is not at a registered centre, you will need to contact them to make sure they are willing to give you a reference online. You need to enter their contact details in the reference section and

click 'Ask referee to complete reference', which triggers an email request to your referee providing them with details on how to provide the reference.

If you require further information and advice, please see www.ucas.com

BMAT

All applicants for D100 and D101 (except non-EU international students) need to take the BMAT in the year of application. Applicants will need to make arrangements to sit the exam themselves. To confirm deadlines and examination dates and for more details, please go to: www.bmat.org.uk

SUPPLEMENTARY INFORMATION

Applicants to our veterinary medicine, gateway and nursing courses are required to submit additional information to the RVC as a part of their application, by the deadline given. Applicants should check the RVC website from August 2015 for further information.

DEFERRED ENTRY

We consider applicants who wish to defer entry until after a gap year, but offer conditions must be met in the same academic year as the application. If you decide not to apply until the beginning of your gap year, please remember that if you are selected for interview, this may be scheduled during the period December to March. It may not be possible to rearrange interviews so you must make sure that you let us know of any dates that you will not be available. It will not be possible to rearrange an interview outside of the normal interview period.



CONDITIONAL OFFERS NOT MET

Applicants with offers from the RVC who fall slightly below the grades required are reconsidered by the Admissions Committee in August if places are available.

CLEARING

Our BVetMed courses (D100, D101 and D102) and our Gateway programme (D190) do not go into Clearing. However, places on our biological science BSc and MSci and veterinary nursing courses may be available. Please contact admissions at the earliest opportunity if you are interested in one of these courses.

REAPPLICATION

In view of the large number and high quality of new candidates coming forward each year, we are normally unable to consider more than one repeat application. All applications are treated as fresh, so you will need to resubmit information from any previous application. If the course requires the BMAT this must be retaken on reapplication. See specific course information if you are re-sitting any qualifications.

VISA REQUIREMENTS

To find out if you need a visa to come to the UK, use the UK Border Agency interactive questionnaire at: www.gov.uk/check-uk-visa

The UK Government has introduced a points-based immigration system for those requiring a visa. Further information can be found on the UK Visas and Immigration website at: www.gov.uk/government/organisations/uk-visas-and-immigration

Please feel free to contact Admissions for further guidance.



NEED TO KNOW: AN IMPORTANT NOTE

All students will be required, as a condition of enrolment, to abide by, and to submit to, the procedures of the Royal Veterinary College's Rules and Regulations as amended from time to time.

A copy of the current rules and regulations is available on request, from the RVC, and is available to all students at the time of enrolment.

The RVC will use all reasonable endeavours to deliver courses in accordance with the descriptions set out in this prospectus. In addition, the RVC continually strives to improve the content and delivery of its courses.

It therefore:

- Reserves the right to suspend recruitment to a course or make variations to the content or methods of delivery of courses if such action is reasonably considered to be necessary by the RVC
- Cannot accept responsibility and expressly excludes liability for damage to or loss of students' property.

Students will need to purchase all essential equipment, including protective clothing, for their own use during the course. Students will also be expected to purchase text books, and charges are made for certain lecture notes.

Need to know:

Fees and finances

So, you've read the course descriptions, considered your options and decided that the RVC is the place for you. Congratulations. The next step is your application...

UK/EU STUDENTS

In 2015/16, the RVC will be charging full-time undergraduate entrants the following fees:

- Veterinary Gateway Programme (D190): £9,000
- Veterinary Medicine (D100/D101/D102): £9,000
- BSc Biological Sciences (C100): £9,000
- BSc Bioveterinary Sciences (D300): £9,000
- BSc Biological Sciences (Animal Behaviour, Welfare and Ethics) (D390): £9,000
- MSci Applied Biological Research (C103): £9,000
- MSci Applied Bioveterinary Research (D303): £9,000
- MSci Biological Sciences (C102): £9,000
- MSci Bioveterinary Sciences (D302): £9,000
- MSci Wild Animal Biology (C300): £9,000
- BSc Veterinary Nursing (D313): £9,000
- Foundation Degree, Veterinary Nursing (D310): £9,000

INTERNATIONAL STUDENTS

In 2015/16, the RVC will be charging full-time undergraduate entrants the following fees:

- Veterinary Medicine (D100/D101/D102): £25,750
- BSc Biological Sciences (C100): £14,230
- BSc Bioveterinary Sciences (D300): £14,230
- BSc Biological Sciences (Animal Behaviour, Welfare and Ethics) (D390): £14,230
- MSci Applied Biological Research (C103): £14,230
- MSci Applied Bioveterinary Research (D303): £14,230
- MSci Biological Sciences (C102): £14,230
- MSci Bioveterinary Sciences (D302): £14,230
- MSci Wild Animal Biology (C300): £14,230
- BSc Veterinary Nursing (D313): £12,610
- Foundation Degree, Veterinary Nursing (D310): £12,610

Please note that international fees may be subject to an Annual Fee uplift (currently capped at 2.5% per annum).

DEPOSIT

International students must pay a non-refundable deposit of £1,000 when they accept a place on an undergraduate degree. Further details about this will be sent if an offer is made.

OTHER EXPENSES

In addition to fees, students will need sufficient funds to cover their accommodation, travel, books and other living expenses. Information about how much you can expect to spend on living expenses can be found on our website at: www.rvc.ac.uk/money

UKCISA also provide useful information on living costs and you can find this on their website at: www.ukcisa.org.uk/International-Students/Living-in-the-UK/

FINANCIAL ADVICE

The RVC Student Welfare and Financial Guidance Officer is also available to give advice if you require it. Please contact: moneymatters@rvc.ac.uk

FINANCIAL SUPPORT

For details of the various schemes of financial support available please go to: www.rvc.ac.uk/money

GRANTS AND AWARDS

There is a constantly changing range of schemes and conditions relating to grants and other awards for prospective UK/EU undergraduate or postgraduate students. For up-to-date information about finances, including fees, bursaries, grants and awards, please visit: www.rvc.ac.uk/money and www.direct.gov.uk/studentfinance



The RVC is also aware that grants and awards may be available to international students. Prospective international students are encouraged to contact the relevant national authority for further information. Or for further reading:

Educational Grants Directory

The Directory of Social Change
Resource for London
356 Holloway Road
London N7 6PA
Telephone: +44 (0)20 7391 4800
www.dsc.org.uk

The Grants Register

Published by Macmillan Reference Limited
Available in reference libraries.

FURTHER FINANCIAL ASSISTANCE

Please note this section does not apply to all students, so please check the information carefully to ensure it applies to your own situation.

BURSARIES (UK/EU STUDENTS ONLY)

All undergraduate programmes

Students eligible to receive the Government Maintenance Grant may also be eligible for RVC bursaries. Bursary amounts for eligible students are calculated according to the amount of Maintenance Grant received.

For 2014/15 the maximum bursary for all undergraduate courses was £2,000 in the year of entry and £1,000 in subsequent years.

Please see our website at: www.rvc.ac.uk/money for information about RVC bursaries for 2015/16.



Army Undergraduate Cadetship Bursaries

(UK/EU students only) The Army needs medical professionals to care for its working animals, therefore they offer a chance for future vets to get financial assistance whilst studying for a degree. A small number of bursaries are available annually to provide financial support for the clinical part of the BVetMed degree (not more than three years), if it is being studied as a first degree. For more information, please go to: www.army.mod.uk/education

Public Care Bursaries

(UK/EU students only) Cash Bursaries of £1,000 are available to students who have been in public care to aid with the financial demands of undertaking a course at the RVC.

Royal Army Veterinary Corps

(UK/EU students only) If you wish to join the Veterinary Corps, please note that financial assistance is available in the form of an undergraduate bursary for BVetMed students in their final three years in return for a minimum of four years' service. Applicants for bursaries are encouraged to join the University Officer Training Corps first. For more information please go to: www.army.mod.uk/education

International scholarships

Two scholarships for international students are offered. One full fee waiver scholarship is available on the BVetMed course at a value of full fee per annum each, and one will be available for BSc Bioveterinary Sciences students at a value of £5,000 per annum. More information about this can be found at: www.rvc.ac.uk/International

Useful Contacts

RVC CAMDEN CAMPUS

Royal College Street
London
NW1 0TU
UK
Telephone: +44 (0)20 7468 5000

ADMISSIONS

For all undergraduate application enquiries:

Admissions Office
Royal Veterinary College
Royal College Street
London
NW1 0TU
UK
Telephone: +44 (0)20 7468 5147 or +44 (0)20 7468 5149
Email: admissions@rvc.ac.uk

RVC HAWKSHEAD CAMPUS

Hawkshead Lane
North Mymms
Herts
AL9 7TA
UK
Telephone: +44 (0)17 0766 6333

STUDENT RECRUITMENT

For enquiries from schools and colleges:
Telephone: +44 (0)20 7468 1257
Email: schools@rvc.ac.uk

WIDENING PARTICIPATION/OUTREACH

For enquiries about Widening Participation and outreach:
Telephone: +44 (0)20 7468 5341

DISABILITY OFFICER

For enquiries concerning applicants with disabilities:
Telephone: +44 (0)20 7468 5037
Email: disability@rvc.ac.uk

STUDENTS' UNION SOCIETY

su.rvc.ac.uk

FOLLOW US ON SOCIAL MEDIA

www.facebook.com/thervc
www.twitter.com/royalvetcollege
www.youtube.com/royalvetlondon
www.pinterest.com/royalvetcollege
www.instagram.com/royalvetcollege

EQUALITY STATEMENT

The Royal Veterinary College welcomes applications from people from all backgrounds. Our equality policy can be found at: www.rvc.ac.uk/about/our-people/human-resources/equality

Whilst all reasonable care has been taken in the compilation of this publication, the College can accept no liability which might arise from an unintentional inaccuracy or from such changes as may take place from time to time. Readers are recommended to verify current circumstances for themselves whenever there is a need to do so.

Any enquiries relating to this prospectus or to the work of the Royal Veterinary College should be addressed to the details found above:

Telephone: +44 (0)20 7468 5147 or 5149
Email: admissions@rvc.ac.uk

The College has charitable status.

Useful Organisations

ROYAL COLLEGE OF VETERINARY SURGEONS

Belgravia House
62–64 Horseferry Road
London
SW1P 2AF

Telephone: +44 (0)20 7222 2001
Fax: +44 (0)20 7222 2004
www.rcvs.org.uk

BRITISH VETERINARY ASSOCIATION

7 Mansfield Street
London
W1G 9NQ

Telephone: +44 (0)20 7636 6541
Fax: +44 (0)20 7908 6349
www.bva.co.uk

BRITISH VETERINARY NURSING ASSOCIATION

82 Greenway Business Centre
Harlow Business Park
Harlow
Essex
CM19 5QE

Telephone: +44 (0)12 7940 8644
Fax: +44 (0)12 7940 8645
www.bvna.org.uk

COLLEGE OF ANIMAL WELFARE

(Administration Centre)
Headland House
Chord Business Park
London Road
Godmanchester
Cambs
PE29 2BQ

Telephone: +44 (0)148 0422 060
Fax: +44 (0)148 0422 089
Email: admin@caw.ac.uk
www.caw.ac.uk

UNIVERSITY OF LONDON

Senate House
Malet Street
London
WC1E 7HU

Telephone: +44 (0)20 7862 8000
www.london.ac.uk

AMERICAN VETERINARY MEDICAL ASSOCIATION

www.avma.org

VETERINARY MEDICAL COLLEGE APPLICATION SERVICE (VMCAS)

1101 Vermont Ave NW
Suite 301
Washington DC 20005
USA

Telephone: (+1) 617 612 2884
Email: vmcas@aavmc.org
www.aavmc.org

UCAS

Customer Service Unit
UCAS
PO Box 28
Cheltenham
GL52 3LZ

Telephone: 037 1468 0468
Overseas telephone: +44 (0)033 0333 0230
Email: enquiries@ucas.ac.uk
www.ucas.com

Visit us at the RVC

If you're thinking about studying with us, there's a lot to be said for coming along and having a look around first – after all, you could be here for several years! We make it easy for you to do this in a way that suits you.

RVC ACCESS

Our RVC Access Team provides a range of activities and events throughout the year for prospective students, parents, carers, teachers and careers advisors. The available events range from annual Open Days (held on site), to visits by our staff and students to individual schools and colleges across the UK, and around the world.

OPEN DAYS

One of the most popular ways to learn about the RVC is to attend one of our Open Days. We currently offer two types of Open Day: a general Open Day which is held annually for students interested in any of our undergraduate courses; and two Open Days run in October and February specifically for students interested in studying the BSc Biological Sciences/BSc Bioveterinary Sciences degrees. Each of these days is packed with a wide range of activities that allow you to visit our state-of-the-art facilities, speak to current students and academics, and gain a general insight into life at the RVC. Parents, teachers and careers advisors are also welcome to attend.

RVC ON TOUR

Each September the RVC hits the road and travels around the UK. The aim of the tour is to give a series of informative and interactive presentations on choices available in the biological, veterinary and nursing fields, as well as the RVC itself. The Tour also provides an opportunity to speak one-to-one with current RVC staff, students and recent graduates. You will also have the chance to undertake practical activities developed by our innovative Clinical Skills Centre, such as bandaging and suturing, and to try various biological science related activities.

TASTER COURSES

Every Spring we run Taster Courses in conjunction with the University of London for Year 12 students considering applying to the BVetMed, BSc Biological Sciences/BSc Bioveterinary

BOOK YOUR SPACE TODAY

Booking is essential for any of the RVC organised events. For more information, and to book, please visit: www.rvc.ac.uk/visitus

If you would like further information about any of the opportunities to visit or find out about the RVC, please contact the RVC Access Team. You can telephone us on +44 (0)20 7468 1257 or email us at: schools@rvc.ac.uk

Sciences and Veterinary Nursing courses. These enable you to experience life as an RVC student first-hand, attending lectures and participating in practical sessions designed to introduce you to the courses we offer.

CAMPUS TOURS

You can also attend one of our Camden or Hawkshead Campus Tours. These tours are led by current students and take place throughout the year.

UCAS CONVENTIONS

We also attend around 20 UCAS conventions each year; these run between February/March and July across the UK.

SCHOOL AND COLLEGE VISITS

If you are a teacher or careers advisor with students interested in the veterinary field or biological science fields, please contact us if you would like an RVC representative to attend a school, college careers or HE fair, or if you would like us to run a talk or session for your students.



CAMDEN CAMPUS

The Royal Veterinary College, Royal College Street, London NW1 0TU United Kingdom

Telephone: +44 (0)20 7468 5000

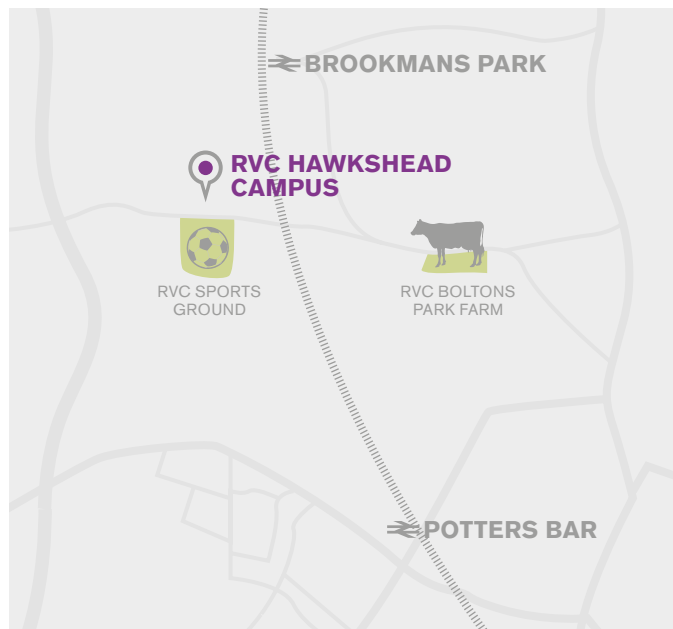
YOUR JOURNEY

We would advise travelling to the Camden Campus by public transport as it tends to be the quickest method.

Please note: The Camden Campus has no parking facilities and local car parking can be expensive.

The RVC Camden Campus is a ten-minute walk from King's Cross/St Pancras International Station (Underground Lines: Circle, Hammersmith & City, Metropolitan, Northern, Victoria and Piccadilly) which is the centre of the train network in London. It is also a ten-minute walk from Mornington Crescent Underground Station (Northern Line) or a 5 minute walk from Camden Road Overground Station.

To find how to get to the Camden Campus from any other location in London, simply plan your journey at: www.tfl.gov.uk



HAWKSHEAD CAMPUS

The Royal Veterinary College, Hawkshead Lane, North Mymms Hatfield, Hertfordshire AL9 7TA United Kingdom

Telephone: +44 (0)1707 666333

YOUR JOURNEY

Travelling by rail

The closest train station to the Hawkshead Campus is Potters Bar station. The journey from Potters Bar to the Hawkshead Campus takes about 10 mins. The RVC runs a free shuttle bus service to Hawkshead Campus (and Boltons Park Farm), from Potters Bar station. There is also a (paid) minicab service available from beside the Potters Bar railway station forecourt (telephone 01707 650077). The journey to the Campus takes about 10 minutes.

Driving to Hawkshead?

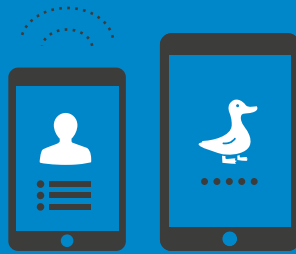
Visitors arriving by road are urged to approach the Main Campus along Hawkshead Lane from the A1000. Please note that Satellite Navigation Systems may instruct you to arrive via the western end of Hawkshead Lane. This route is not recommended, especially for larger vehicles, because of the narrow, twisting roads and very narrow bridge.

From the M25 leave at Junction 24 and take the A111 (Southgate Road) to Potters Bar. At the first main junction and traffic lights, turn right onto the A1000 towards Hatfield. Follow the A1000 through Potters Bar and then turn left onto Hawkshead Road and then fork left onto Hawkshead Lane.

ACCESS. CONNECT. NETWORK.

**RVC
SOCIAL
MEDIA**

Get the most out of student life with RVC social media. We'll keep you connected with everything that's going on in and around campus – from scientific breakthroughs to unforgettable nights out!



WWW.RVC.AC.UK





Established in 1791, the RVC is the UK's longest-standing veterinary college – with a proud heritage of innovation in veterinary science, clinical practice and education.

