



Shure Update Utility

Shure Update Utility

Version: 9.2 (2020-K)

Table of Contents

| | | | |
|--------------------------------|----------|--------------------------|---|
| Shure Update Utility | 3 | Downloading New Firmware | 3 |
| Shure Update Utility | 3 | Connecting Hardware | 4 |
| Quickstart Instructions | 3 | Send Updates | 5 |
| Shure Update Utility | 3 | Troubleshooting | 6 |
| What You Need | 3 | Wireless System | 7 |

Shure Update Utility

Shure Update Utility

Quickstart Instructions

Shure Update Utility

The Shure Update Utility (SUU) is a free desktop application for Mac and Windows that downloads, stores, and sends new firmware versions to connected devices. Firmware updates are part of the maintenance of your electronic devices. Firmware updates:

- Ensure the functionality and interoperability of your Shure hardware and software
- May include new features and added functionality
- Delivers minor fixes or patches

What You Need

- A computer with an Internet connection
- The Shure Update Utility software (available at)
- Shure hardware to be updated
- Cables to connect Shure gear to the computer
- Network switch for connecting multiple devices at once (Ethernet devices only)

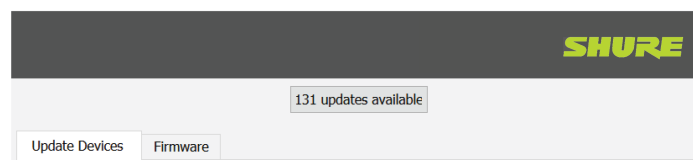
Downloading New Firmware

After downloading firmware to the SUU, devices can be updated offline if your system is in a location without easy internet access.

To download the latest firmware versions, open the Shure Update Utility.

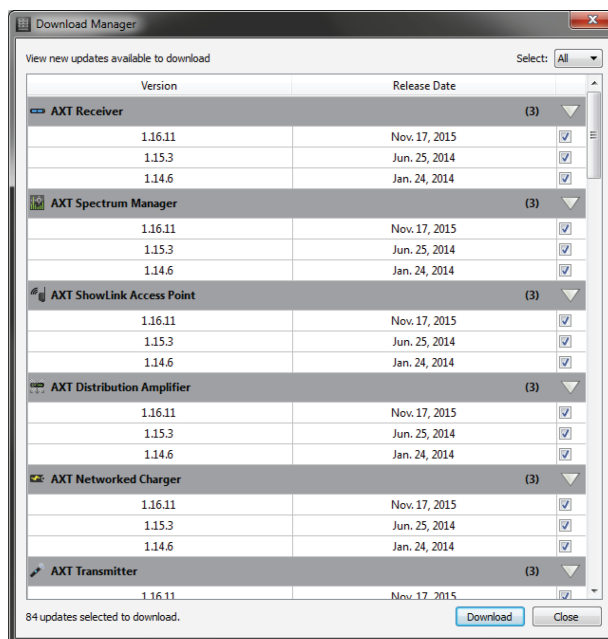
1. Click the Updates button at the top of the window to open the Download Manager.

This button will be labeled either "Check for updates..." or "[#] updates available"



2. From the Download Manager, select the desired firmware versions.

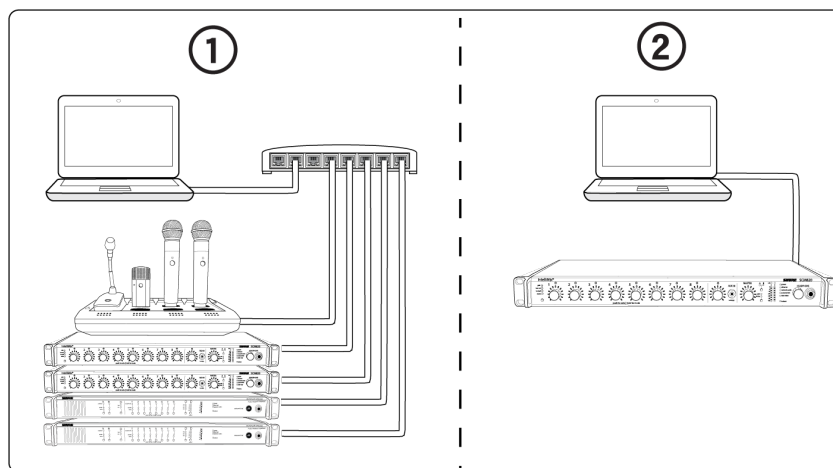
The dropdown in the upper right allows you to quickly select all or select none.



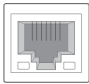

- Click Download, and then Close the Download Manager. Downloaded firmware is listed and can be viewed and managed in the Firmware tab.

Connecting Hardware

Connect your device or network switch to your computer. A wired connection is required when updating device firmware.



- A network switch can connect multiple devices simultaneously. A "star" configuration is not required, but is strongly recommended.
- Connect the Ethernet port on a single device directly to your computer.

| Input Type | Cable Type |
|---|---|
|  <p>RJ45 Ethernet</p> |  <p>Cat5e</p> |

Checking Your Connection

To verify your devices are connected properly:

- Open the Update Devices tab on the Shure Update Utility
- Confirm all connected devices appear in the list

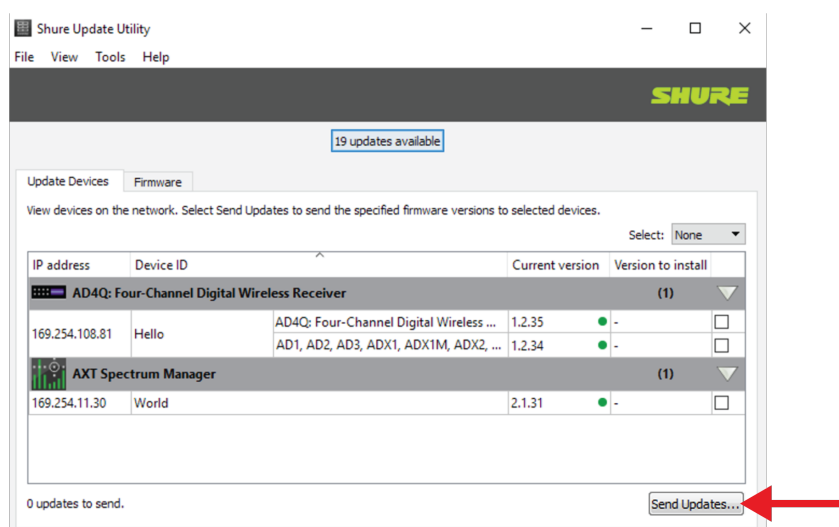
If any devices do not display:

- Check all physical connections
- Ensure all devices are powered on
- Refer to the Troubleshooting section of the SUU user guide

Send Updates

Push to Connected Devices

In the Update Devices tab, all items with available updates may be pre-selected (indicated by a checked check box). To change the firmware version being sent, double-click the device's row in the Version to install column. When all devices to be updated are checked and the proper version is selected, click Send Updates...



Do not turn off, unplug or disconnect the system during a firmware update. If an interruption occurs, reconnect the device to your computer and send the relevant updates again.

Push to Wireless Components

Firmware updates may include firmware for supported wireless components. Certain systems support updating of transmitters when docked in networked charging stations. Others can be connected to your computer directly via USB. These systems can be connected to your computer and updated through the SUU.

Wireless components that are not updated through the SUU use infrared ports to send the updates from the host device to the wireless components. To initiate an IR update:

- **Navigate:** Access the Tx Firmware Update option in the menu of the host device
- **Align:** Line up the IR ports on both devices such that they will stay aligned until the update is complete (up to 50 seconds or more)



- **Initiate:** Select Tx Firmware Update to begin the transfer

For more information on updating portable devices, select your system:

| Product Family | Portable Device Update Method |
|----------------|-------------------------------|
| Microflex | Networked Charging Station |
| QLX-D | IR sync |
| ULX-D | IR sync |
| PSM1000 | IR sync |
| Axient | IR sync |
| Axient Digital | IR sync |

Troubleshooting

The following are some of the most common issues SUU users have reported. If your issue is not addressed here, please contact customer support by [visiting Shure.com](https://www.shure.com) and [choosing your region](#)

Connected devices don't display

First, verify that all components are powered on and all physical connections are secure.

For devices updated via Ethernet:

1. Make sure you've selected the computer's network interface card (NIC) that corresponds with the network connection to your Shure hardware. To view or change the selected NIC, go to Preferences > Network in the SUU.
2. If the proper NIC is selected, check your computer's firewall settings and make sure the SUU is listed as an allowed application. Log in to your computer as an administrator to gain full access to your firewall settings or contact your IT administrator for assistance. For third-party firewall software, refer to the manufacturer's instructions for granting access to each instance of an application (there may be more than one instance).

If you receive an alert pop-up that blocks the SUU, check the boxes to allow access for all networks (Domain Networks, Private Networks, and Public Networks).

- Some systems require Power over Ethernet (PoE) in order to be discoverable. Make sure your network switch provides PoE, or use a PoE injector.

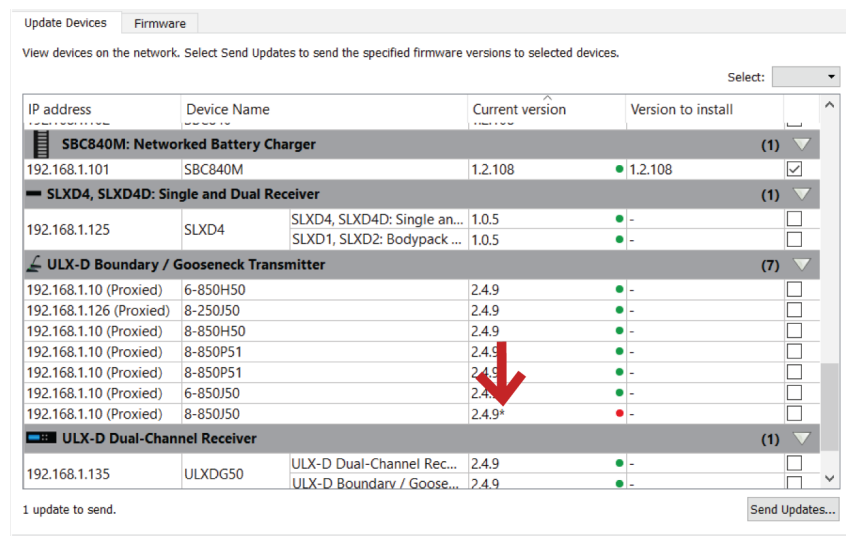
SUU is locked in "discovering..."

When devices in the Update Devices tab constantly shows discovering..., make sure your computer and your Shure hardware are connected to the same subnet.

[Model-specific instructions for accessing the network menu and configuring IP addresses are available here.](#)

Current firmware version displays with an asterisk

An asterisk next to the current firmware version indicates a problem with the firmware installed on the device.



| IP address | Device Name | Current version | Version to install |
|--|----------------------------|-----------------------------------|--------------------|
| SBC840M: Networked Battery Charger (1) | | | |
| 192.168.1.101 | SBC840M | 1.2.108 | 1.2.108 |
| SLXD4, SLXD4D: Single and Dual Receiver (1) | | | |
| 192.168.1.125 | SLXD4 | SLXD4, SLXD4D: Single an... 1.0.5 | - |
| | SLXD1, SLXD2: Bodypack ... | 1.0.5 | - |
| ULX-D Boundary / Gooseneck Transmitter (7) | | | |
| 192.168.1.10 (Proxied) | 6-850H50 | 2.4.9 | - |
| 192.168.1.126 (Proxied) | 8-250J50 | 2.4.9 | - |
| 192.168.1.10 (Proxied) | 8-850H50 | 2.4.9 | - |
| 192.168.1.10 (Proxied) | 8-850P51 | 2.4.9 | - |
| 192.168.1.10 (Proxied) | 8-850P51 | 2.4.9 | - |
| 192.168.1.10 (Proxied) | 6-850J50 | 2.4.9 | - |
| 192.168.1.10 (Proxied) | 8-850J50 | 2.4.9* | - |
| ULX-D Dual-Channel Receiver (1) | | | |
| 192.168.1.135 | ULXDG50 | ULX-D Dual-Channel Rec... 2.4.9 | - |
| | ULX-D Boundary / Goose... | 2.4.9 | - |

1 update to send. Send Updates...

If you are unable to update to a new version, try reinstalling the current version. This may take several attempts. After the current version installs correctly, you may update to the new version as normal.

Wireless System

MXW Transmitter Firmware Updates

Dock all MXW transmitters in the networked charging station that is connected to the same network and subnet as your computer. Install updates through the SUU as you would any other connected device.

If the MXW Audio Network Interface is connected via Port 4, ensure that the Network mode is set to Switched mode (default) from the Preferences tab of the ANI control software.

QLX-D Transmitter Firmware Updates

Download the appropriate firmware package to the receiver:

- HH BP = handheld or bodypack firmware
- BN GN = gooseneck or boundary firmware

- On the receiver, Press menu while holding the enter button to access the advanced menu. Use the menu button to navigate to the update menu.
- Press enter to start the update.
- When the red IR LED flashes, align the receiver and transmitter IR sync ports. The red LED will remain illuminated to indicate correct alignment and the download will automatically start.

4. Maintain alignment during the update and monitor download progress (0 to 100%) on the receiver screen.
5. When the update is complete, "TX Update good" is shown on the receiver display. If the screen shows Err.009, update again with a transmitter type that matches the firmware held by the receiver.

Do not turn off the transmitter until the update is complete.

ULX-D Transmitter Firmware Update

1. Go to **DEVICE UTILITIES > TX FW UPDATE** on the receiver.
2. Download the appropriate firmware package to the receiver:
 - HH BP = handheld or bodypack firmware
 - BN GN = gooseneck or boundary firmware
3. Place the transmitter on its side and align the IR ports.
4. Press **ENTER** on the receiver to begin the download to the transmitter. IR ports must be aligned for the entire download, which can take 50 seconds or longer.

Do not turn off the transmitter until the update is complete.

Axient Digital Transmitter Firmware Update

Download firmware to the receiver first, and then update transmitters to the same firmware version to ensure consistent operation.

1. Go to **Device Configuration > Tx Firmware Update** on the receiver.
2. Place the transmitter on its side and align the IR ports.
3. Press **ENTER** on the receiver to begin the download to the transmitter. IR ports must be aligned for the entire download, which can take 50 seconds or longer.

Do not turn off the transmitter until the update is complete.

Axient Transmitter Firmware Updates

1. Download the transmitter firmware to the AXT400 receiver via the SUU
2. On the transmitter, navigate to **Tx > IR Presets > FW Update**
3. Align the receiver and transmitter IR ports and press **Download**

Once the download is complete, which can take 50 seconds or longer, the transmitter automatically begins the firmware update, which overwrites the existing firmware.

Do not turn off the transmitter until the update is complete.

PSM1000 Receiver Firmware Update

1. On the transmitter, navigate to the **Util > More > FW Update** menu.
2. Align the receiver and transmitter IR ports and press **Download**. The download begins, which can take 50 seconds or longer.

Once the download is complete, the receiver automatically begins the firmware update, which overwrites the existing firmware.

Do not turn off the receiver until the update is complete.