

postal|bulletin

PUBLISHED SINCE MARCH 4, 1880

HERE'S TO HEROES

See page 3.

Joseph Ho
Letter Carrier
Chester, PA, Post Office

Pre-pandemic photo was
taken September 2019.



Contents

COVER STORY

Here's to Heroes 3

POLICIES, PROCEDURES, AND FORMS UPDATES

Manuals

DMM Revision: Bound in Enclosures in Periodicals 4

DMM Revision: Hold Mail Service Clarification 5

IMM Revision: Individual Country Listing for Austria 5

IMM Revision: Retention Period for PS Form 2976-R 6

Publications

Publication 431 Revision: Changes to Post Office

Box Service and Caller Service Fee Groups 7

ORGANIZATION INFORMATION

Domestic Mail

Labeling List Changes 8

Stamp Services

Stamp Announcement 21-19: Yogi Berra Stamp 12

Stamp Announcement 21-20: Mystery Message

Stamp 14

Stamp Announcement 21-21: Western Wear Stamps 35

Stamp Announcement 21-22: Ursula K. Le Guin Stamp 37

Stamp Announcement 21-23: Raven Story Stamp 39

Pictorial Postmarks Announcement 40

How to Order the First-Day-of-Issue Digital Color or

Traditional Postmarks 42

PULL-OUT INFORMATION

Fraud

Invalid USPS Corporate Account Numbers 15

Missing, Lost, or Stolen U.S. Money Order Forms 17

Missing, Lost, or Stolen Canadian Money Order Forms 23

Verifying U.S. Postal Service Money Orders 25

Counterfeit Canadian Money Order Forms 25

Toll-Free Number Available to Verify Canadian

Money Orders 25

Other Information

Overseas Military/Diplomatic Mail 26

Thrift Savings Plan Fact Sheet 32

Freely Associated States Restrictions 34

POSTAL BULLETIN 2020 ANNUAL INDEX

2020 Annual Index PB 22564 (1-28-21)

Find the latest in mail and delivery information
and services offered by U.S. Postal®
in the *Postal Bulletin* at
about.usps.com/postal-bulletin

Mail Moment®

Cover Story

Here's to Heroes

Letter Carrier Joseph Ho was delivering mail in a Chester, PA, neighborhood when he spotted an older customer who has Parkinson's disease lying on a sidewalk near the man's residence.

Ho rushed to check on the customer, who was bleeding profusely from a head wound. The Postal Service™ employee immediately called 911, alerted the man's wife, rendered first aid to slow the bleeding, and comforted the couple until paramedics arrived.

The hurt customer was treated at a hospital, where physicians credited Ho with saving the man's life.

His wife later mailed a letter to the local Post Office™. "Joe deserves recognition for being a stellar employee and one heck of a kind, caring man," she wrote. "My husband and I can't say 'thank you' enough."

Ho is one of several thousand employees who have been recognized through the Postmaster General (PMG) Heroes' Program. These men and women have gone above and beyond the call of duty in a variety of situations, such as assisting lost children, getting help for sick or injured customers, spotting fires, and more.

Now in its eighteenth year, the program is based on a simple idea: Postal Service employees know the habits of their customers and the rhythms of their communities, and are often the first to notify emergency personnel and render aid when something is wrong.

Employees must be nominated for the PMG Hero Award. Corporate Communications reviews nominations for accuracy, then sends them to the Inspection Service and the Office of Inspector General for approval.

Following approval, each nominee receives a commendation letter from the Postmaster General. Honorees are also featured in "Heroes' Corner" on the Postal Service's daily employee news site, *Link*.

To nominate an employee, complete PS Form 400, *Corporate Communications PMG Hero Nomination*, and email it to PMG_HeroNominations@usps.gov. To download or print the form, go to usps.link/heroes, where you can also find the "Heroes' Corner" archives and read more stories about heroic employees.

— *Communications Content and Strategy, Corporate Communications, 6-17-21*

Policies, Procedures, and Forms Updates

Manuals

DMM Revision: Bound in Enclosures in Periodicals

Effective August 29, 2021, the Postal Service™ will revise *Mailing Standards of the United States Postal Service, Domestic Mail Manual (DMM®)*, section 207.3.3, to add a standard for bound in enclosures in Periodicals. Bound in enclosures are requests or subscription order forms that are bound into a Periodicals publication (or a publication pending Periodicals authorization). They are prepared as a single sheet or multiple pages and include an attached reply card or envelope.

These items must not be counted when determining the percentage of total advertising in the publication. A request or a subscription order form must be included in the total weight of the publication reported on the postage statement.

Although the Postal Service will not publish this revision in the DMM until August 29, 2021, the standard is effective immediately.

Mailing Standards of the United States Postal Service, Domestic Mail Manual (DMM)

	*	*	*	*	*
200	Commercial Mail Letters, Cards, Flats, and Parcels				
	*	*	*	*	*
207	Periodicals				
	*	*	*	*	*
3.0	Physical Characteristics and Content Eligibility				
	*	*	*	*	*
3.3	Permissible Mailpiece Components				
	*	*	*	*	*

[Add new section 3.3.5 to read as follows and renumber current sections 3.3.5 through 3.3.11 as 3.3.6 through 3.3.12:]

3.3.5 Bound in Enclosures at Periodicals Prices

Only the following material may be included as a bound in enclosure in a Periodicals mailpiece (or a publication pending Periodicals authorization) and be paid for at Periodicals prices, subject to the corresponding conditions:

- a. A request or order form for a subscription to an authorized Periodicals publication (or a publication pending Periodicals authorization) that is bound into a Periodicals publication (or a publication pending Periodicals authorization), and which is prepared as a single sheet or multiple pages and includes an attached reply card or an envelope, is not counted as advertising. The request or order form may be part of, or accompanied by, printed material containing information related exclusively to a request or an order for a subscription, provided the request or the subscription order form does not advertise, promote, or offer for sale any other products or services.
- b. Enclosures listed in 3.3.5 are not counted when determining the percentage of total advertising in the publication, but they are included in the total weight of the publication reported on the postage statement.

* * * * *

The Postal Service will incorporate this revision into the next edition of the online DMM, which is available via Postal Explorer® at pe.usps.com.

— *Product Classification,
Product Solutions, 6-17-21*

DMM Revision: Hold Mail Service Clarification

Effective August 29, 2021, the Postal Service™ will revise *Mailing Standards of the United States Postal Service*, Domestic Mail Manual (DMM®), sections 508.11.1.1 and 508.11.4, to clarify that mail held under Hold Mail service also includes accountable mail, such as Priority Mail Express® and Certified Mail®.

The Postal Service is revising section 508.11.1.1 to specify that under Hold Mail service, mail held by request for an eligible address also includes accountable mail. The Postal Service is also revising section 508.11.4 to specify that accumulated mail, including accountable mail, must be picked up within 10 days of the end date of the Hold Mail service request.

Although the Postal Service will not publish this clarification in the DMM until August 29, 2021, the standards are effective immediately.

Mailing Standards of the United States Postal Service, Domestic Mail Manual (DMM)

	*	*	*	*	*
500	Additional Mailing Services				
	*	*	*	*	*
508	Recipient Services				
	*	*	*	*	*

11.0 Hold Mail Service

11.1 General

11.1.1 Description

[Revise the first sentence of 11.1.1 to read as follows:]

USPS Hold Mail service provides customers or an authorized agent (11.1.2) the option to have all mail, including accountable mail, for an eligible address held at the Post Office for not less than 3 days and not more than 30 days.***

* * * * *

11.4 Mail Pick Up or Delivery

[Revise the introductory text of 11.4 to read as follows:]

Customers have the option to pick up their accumulated mail under 11.1.1 at their local Post Office, or have a letter-carrier deliver their accumulated mail on the ending date specified in the Hold Mail service request under the following conditions:

* * * * *

[Revise the second sentence of item c. to read as follows:]

c. ***If the accumulated mail, including accountable mail, is not picked up within the 10-day period, it will be returned to the sender or securely destructed.

* * * * *

The Postal Service will incorporate these revisions into the next edition of the online DMM, which is available via Postal Explorer® at pe.usps.com.

— Product Classification,
Product Solutions, 6-17-21

IMM Revision: Individual Country Listing for Austria

Effective June 17, 2021, the Postal Service™ is revising the Individual Country Listing for Austria in *Mailing Standards of the United States Postal Service*, International Mail Manual (IMM®) to note revisions to the list of prohibitions.

These revisions are based on a formal request that Österreichische Post AG (the designated operator of Austria) made through the Universal Postal Union via *International Bureau Circular 79*, dated May 17, 2021.

Mailing Standards of the United States Postal Service, International Mail Manual (IMM)

* * * * *

Individual Country Listings

* * * * *

Austria

Country Conditions for Mailing

Prohibitions

[Revise the entry that reads “Arms and weapons.” to read as follows:]

Arms, ammunition, and weapons, including parts and accessories thereof, and antique weapons that are more than 100 years old.

* * * * *

[Revise the entry that begins with “Firearms ...” to read as follows:]

Firearms, including parts and accessories thereof, replica firearms, articles made to resemble firearms, and toy guns.

* * * * *

Although effective June 17, 2021, the Postal Service will incorporate these revisions into a later edition of the online IMM, which is available via Postal Explorer® at pe.usps.com.

— Product Classification,
Product Solutions, 6-17-21

IMM Revision: Retention Period for PS Form 2976-R

Effective June 17, 2021, the Postal Service™ is revising *Mailing Standards of the United States Postal Service, International Mail Manual (IMM®)*, section 123.722k, to change the retention period of the Post Office™ Copy of PS Form 2976-R, *USPS Customs Declaration and Dispatch Note*, processed at USPS® retail service counters to 6 years.

The U.S. agencies whose regulations might affect the record retention of customs declaration data include, but are not limited to, the following:

- The Department of Commerce — Bureau of Industry and Security.
- The Department of Commerce — Census Bureau.
- The Department of Homeland Security — Customs and Border Protection.
- The Department of State — Directorate of Defense Trade Controls.
- The Department of Treasury — Office of Foreign Assets Control.

Certain U.S. export regulators require the retention of documents for a minimum of 5 years after the date of export. The Postal Service retains its documents for 6 years to ensure accountability between acceptance and export of mailpieces, and to align the retention period for hard copy documents to the current retention period for electronic data.

Mailing Standards of the United States Postal Service, International Mail Manual (IMM)

* * * * *

1 International Mail Services

* * * * *

120 Preparation for Mailing

* * * * *

123 Customs Forms and Online Shipping Labels

* * * * *

123.7 Completing Customs Forms

* * * * *

123.72 Preparation and Acceptance of PS Form 2976-R

* * * * *

123.722 Postal Service Employee's Acceptance of PS Form 2976-R

* * * * *

[Revise item k. to read as follows (changing 30 days to 6 years):]

- k. Remove and store (per local requirements) the Post Office Copy (Copy 3) and tell the mailer that the Postal Service will retain this document for 6 years as a record of mailing. Remove the Sender's Copy (Copy 4) and give it to the sender.

* * * * *

Although effective June 17, 2021, the Postal Service will incorporate this revision into a later edition of the online IMM, which is available via Postal Explorer® at pe.usps.com.

— Product Classification,
Product Solutions, 6-17-21

Publications

Publication 431 Revision: Changes to Post Office Box Service and Caller Service Fee Groups

Effective June 17, 2021, Publication 431, *Post Office Box Service and Caller Service Fee Groups*, is revised to include the following changes.

Publication 431, *Post Office Box Service and Caller Service Fee Groups*

* * * * *

[Delete the following entries:]

ZIP Code	Fee Group
33737	4
33826B	4
79002	6
79517	6

* * * * *

The online version of Publication 431 is dated July 2013. Publication 431 is currently available on the Postal Service™ PolicyNet website (blue.usps.gov/cpim):

- Go to blue.usps.gov.
- In the left-hand column, click *Essential Links*, and then click *PolicyNet*.
- Go to the right-hand side under “Published Forms and Directives.”
- Click *Publications*.

Offices with WebBATS Manager/Supervisor access can view current Publication 431 information by going to the WebBATS Edit Facility Information page, as follows:

1. Go to the WebBATS main menu, and select Utility> Facility>Edit Facility option.
2. View the Fee Group field on the Edit Facility Information page.

— *Post Office Operations,
Retail and Post Office Operations, 6-17-21*

Organization Information

Domestic Mail

Labeling List Changes

Effective July 1, 2021, the Postal Service™ will revise Labeling List(s) L001, L006, L010, L012, L015, L201, and L606 to reflect changes in mail processing operations. Mailers are expected to label according to these revised lists for mailings inducted on or after the July 1, 2021, effective date through the August 31, 2021, expiration date.

Labeling Lists

* * * * *

L001 5-Digit Scheme — Periodicals, Standard Mail, and Package Services Flats and Irregular Parcels

* * * * *

Deleted

Column A Destination ZIP Codes	Column B Label Container To (Deleted From)
31757	THOMASVILLE GA 31757
31792	THOMASVILLE GA 31757
80701	FORT MORGAN CO 80701

Column A Destination ZIP Codes	Column B Label Container To (Deleted From)
80723	FORT MORGAN CO 80701
98373	PUYALLUP WA 98375

* * * * *

L006 5-Digit FSS Scheme — Periodicals, Standard Mail, and Package Services Flats in Bundles

* * * * *

Newly Added

Column A Destination ZIP Codes	Column B Scheme Bundle/ Container Placard (Added To)	Column C Facility Container Placard (Added To)
33025	FSS HOLLYWOOD FL 33025	FSS ROYAL PALM FL 330
33027	FSS HOLLYWOOD FL 33025	FSS ROYAL PALM FL 330
33063	FSS MARGATE FL 33093	FSS ROYAL PALM FL 330
33065	FSS CORAL SPRINGS FL 33065	FSS ROYAL PALM FL 330
33068	FSS MARGATE FL 33093	FSS ROYAL PALM FL 330
33071	FSS CORAL SPRINGS FL 33071	FSS ROYAL PALM FL 330
33075	FSS CORAL SPRINGS FL 33065	FSS ROYAL PALM FL 330
33076	FSS POMPANO BEACH FL 33076	FSS ROYAL PALM FL 330
33077	FSS CORAL SPRINGS FL 33071	FSS ROYAL PALM FL 330
33093	FSS MARGATE FL 33093	FSS ROYAL PALM FL 330
33155	FSS MIAMI FL 33155	FSS ROYAL PALM FL 330
33172	FSS MIAMI FL 33172	FSS ROYAL PALM FL 330
33178	FSS MIAMI FL 33178	FSS ROYAL PALM FL 330
33255	FSS MIAMI FL 33155	FSS ROYAL PALM FL 330
33306	FSS FORT LAUDERDALE FL 33306	FSS ROYAL PALM FL 330

Deleted

Column A Destination ZIP Codes	Column B Scheme Bundle/ Container Placard (Deleted From)	Column C Facility Container Placard (Deleted From)
14612	FSS ROCHESTER NY 14617	FSS ROCHESTER NY 144
14616	FSS ROCHESTER NY 14616	FSS ROCHESTER NY 144
14617	FSS ROCHESTER NY 14617	FSS ROCHESTER NY 144
14626	FSS ROCHESTER NY 14616	FSS ROCHESTER NY 144

* * * * *

L010 NDC/ASF Entry — Standard Mail Letters and Package Services Irregular Parcels

* * * * *

Newly Added

Column A Entry NDC/ASF	Column B Label To (Added To)
OKLAHOMA ASF	MXD OKLAHOMA CITY OK 730

Deleted

Column A Entry NDC/ASF	Column B Label To (Deleted From)
OKLAHOMA CITY ASF	MXD OKLAHOMA CITY OK 730

* * * * *

L012 5-Digit ZIP Scheme Combination

Changes

Column A Destination ZIP Codes	Column B Label Container To (Change From)	Column B Label Container To (Change To)
16319	TITUSVILLE PA 16354	FRANKLIN PA 16323
16323	TITUSVILLE PA 16354	FRANKLIN PA 16323
16342	TITUSVILLE PA 16354	FRANKLIN PA 16323
16346	TITUSVILLE PA 16354	FRANKLIN PA 16323
16351	TITUSVILLE PA 16354	TIONESTA PA 16353
16353	TITUSVILLE PA 16354	TIONESTA PA 16353
16405	ALBION PA 16401	CORRY PA 16407
16407	ALBION PA 16401	CORRY PA 16407
16411	GIRARD PA 16417	EAST SPRINGFIELD PA 16411
16415	GIRARD PA 16417	EAST SPRINGFIELD PA 16411
16417	GIRARD PA 16417	EAST SPRINGFIELD PA 16411
16421	GIRARD PA 16417	HARBORCREEK PA 16421
16423	GIRARD PA 16417	EAST SPRINGFIELD PA 16411
16428	GIRARD PA 16417	HARBORCREEK PA 16421
16436	ALBION PA 16401	CORRY PA 16407
16442	ALBION PA 16401	CORRY PA 16407
16443	GIRARD PA 16417	EAST SPRINGFIELD PA 16411
19317	CHADDS FORD PA 19317	MALVERN PA 19355
19335	COATESVILLE PA 19320	DOWNINGTOWN PA 19335
19355	CHADDS FORD PA 19317	MALVERN PA 19355
19372	COATESVILLE PA 19320	DOWNINGTOWN PA 19335
19374	CHADDS FORD PA 19317	MALVERN PA 19355
19803	CHADDS FORD PA 19317	WILMINGTON DE 19803
19810	CHADDS FORD PA 19317	WILMINGTON DE 19803
21012	SEVERNA PARK MD 21146	PASADENA MD 21122
21029	ELLCOTT CITY MD 21043	ELLCOTT CITY MD 21041
21032	ANNAPOLIS MD 21403	PASADENA MD 21122
21035	SEVERNA PARK MD 21146	EDGEWATER MD 21037
21036	ELLCOTT CITY MD 21043	ELLCOTT CITY MD 21041
21037	ANNAPOLIS MD 21403	EDGEWATER MD 21037
21041	ELLCOTT CITY MD 21042	ELLCOTT CITY MD 21041
21042	ELLCOTT CITY MD 21042	ELLCOTT CITY MD 21041
21044	COLUMBIA MD 21044	COLUMBIA MD 21046
21045	COLUMBIA MD 21045	COLUMBIA MD 21046
21046	COLUMBIA MD 21044	COLUMBIA MD 21046
21054	CROFTON MD 21114	EDGEWATER MD 21037
21075	COLUMBIA MD 21045	ELKRIDGE MD 21075
21076	ELLCOTT CITY MD 21043	ELKRIDGE MD 21075
21077	ELLCOTT CITY MD 21043	ELKRIDGE MD 21075

Column A Destination ZIP Codes	Column B Label Container To (Change From)	Column B Label Container To (Change To)
21090	LINTHICUM HEIGHTS MD 21090	ELKRIDGE MD 21075
21108	CROFTON MD 21114	FINKSBURG MD 21048
21113	LINTHICUM HEIGHTS MD 21090	ODENTON MD 21113
21114	CROFTON MD 21114	ODENTON MD 21113
21140	ANNAPOLIS MD 21403	EDGEWATER MD 21037
21144	LINTHICUM HEIGHTS MD 21090	ODENTON MD 21113
21146	SEVERNA PARK MD 21146	PASADENA MD 21122
21401	ANNAPOLIS MD 21401	ANNAPOLIS MD 21402
21402	ANNAPOLIS MD 21401	ANNAPOLIS MD 21402
21403	ANNAPOLIS MD 21403	ELLCOTT CITY MD 21041
21404	ANNAPOLIS MD 21401	ANNAPOLIS MD 21402
24203	BRISTOL VA 24202	BRISTOL TN 37621
24209	BRISTOL VA 24202	BRISTOL TN 37621
35006	ADGER AL 35006	FAIRFIELD AL 35064
35010	ALEXANDER CITY AL 35010	SYLACAUGA AL 35150
35011	ALEXANDER CITY AL 35010	SYLACAUGA AL 35150
35019	BAILEYTON AL 35019	CULLMAN AL 35056
35033	BREMEN AL 35033	SYLACAUGA AL 35150
35034	ADGER AL 35006	FAIRFIELD AL 35064
35049	BREMEN AL 35033	FULTONDALE AL 35068
35053	ADGER AL 35006	SYLACAUGA AL 35150
35055	BAILEYTON AL 35019	CULLMAN AL 35056
35056	BAILEYTON AL 35019	CULLMAN AL 35056
35057	BAILEYTON AL 35019	CULLMAN AL 35056
35058	BAILEYTON AL 35019	CULLMAN AL 35056
35061	ADGER AL 35006	FAIRFIELD AL 35064
35063	ADGER AL 35006	FAIRFIELD AL 35064
35064	ADGER AL 35006	FAIRFIELD AL 35064
35068	BREMEN AL 35033	FULTONDALE AL 35068
35071	BREMEN AL 35033	FULTONDALE AL 35068
35072	ALEXANDER CITY AL 35010	SYLACAUGA AL 35150
35078	ADGER AL 35006	FAIRFIELD AL 35064
35079	ADGER AL 35006	FAIRFIELD AL 35064
35083	BAILEYTON AL 35019	CULLMAN AL 35056
35087	BREMEN AL 35033	FULTONDALE AL 35068
35089	BREMEN AL 35033	SYLACAUGA AL 35150
35091	BREMEN AL 35033	FULTONDALE AL 35068
35097	BREMEN AL 35033	FULTONDALE AL 35068
35098	BREMEN AL 35033	SYLACAUGA AL 35150
35116	BREMEN AL 35033	FULTONDALE AL 35068
35117	BREMEN AL 35033	FULTONDALE AL 35068
35127	ADGER AL 35006	FAIRFIELD AL 35064
35136	ALEXANDER CITY AL 35010	SYLACAUGA AL 35150
35147	ADGER AL 35006	FAIRFIELD AL 35064
35150	ALEXANDER CITY AL 35010	SYLACAUGA AL 35150
35151	ALEXANDER CITY AL 35010	SYLACAUGA AL 35150
35171	ADGER AL 35006	FAIRFIELD AL 35064
35172	BREMEN AL 35033	FULTONDALE AL 35068
35175	BAILEYTON AL 35019	CULLMAN AL 35056
35176	ADGER AL 35006	FAIRFIELD AL 35064

Column A Destination ZIP Codes	Column B Label Container To (Change From)	Column B Label Container To (Change To)
35178	ADGER AL 35006	FAIRFIELD AL 35064
35179	BAILEYTON AL 35019	SYLACAUGA AL 35150
35180	BREMEN AL 35033	FULTONDALE AL 35068
35183	ALEXANDER CITY AL 35010	ALPINE AL 35014
35184	ADGER AL 35006	FAIRFIELD AL 35064
35188	ADGER AL 35006	FAIRFIELD AL 35064
36203	ANNISTON AL 36201	OXFORD AL 36203
36250	ANNISTON AL 36201	OXFORD AL 36203
36251	ANNISTON AL 36201	OXFORD AL 36203
36260	ANNISTON AL 36201	OXFORD AL 36203
36266	ANNISTON AL 36201	OXFORD AL 36203
36271	ANNISTON AL 36201	OXFORD AL 36203
36272	ANNISTON AL 36201	OXFORD AL 36203
36273	ANNISTON AL 36201	OXFORD AL 36203
36278	ANNISTON AL 36201	OXFORD AL 36203
51534	DUNLAP IA 51529	GLENWOOD IA 51534
51561	CARSON IA 51525	GLENWOOD IA 51534
51571	CARSON IA 51525	GLENWOOD IA 51534
65401	ST JAMES MO 65559	ROLLA MO 65401
65402	ST JAMES MO 65559	ROLLA MO 65401
65409	ST JAMES MO 65559	ROLLA MO 65401
65438	BIRCH TREE MO 65438	CUBA MO 65453
65439	ST JAMES MO 65559	CUBA MO 65453
65440	ST JAMES MO 65559	CUBA MO 65453
65443	FT LEONARD WOOD MO 65473	CUBA MO 65453
65444	BIRCH TREE MO 65438	CUBA MO 65453
65452	CROCKER MO 65452	CUBA MO 65453
65457	ST JAMES MO 65559	CUBA MO 65453
65459	FT LEONARD WOOD MO 65473	CUBA MO 65453
65461	ST JAMES MO 65559	CUBA MO 65453
65463	FT LEONARD WOOD MO 65473	CUBA MO 65453
65464	BIRCH TREE MO 65438	CUBA MO 65453
65466	BIRCH TREE MO 65438	CUBA MO 65453
65468	BIRCH TREE MO 65438	CUBA MO 65453
65470	CROCKER MO 65452	CUBA MO 65453
65473	FT LEONARD WOOD MO 65473	CUBA MO 65453
65479	BIRCH TREE MO 65438	CUBA MO 65453
65483	BIRCH TREE MO 65438	CUBA MO 65453
65484	BIRCH TREE MO 65438	CUBA MO 65453
65486	FT LEONARD WOOD MO 65473	CUBA MO 65453
65501	CUBA MO 65453	SALEM MO 65560
65529	ST JAMES MO 65559	SALEM MO 65560
65532	CUBA MO 65453	SALEM MO 65560
65534	FT LEONARD WOOD MO 65473	SALEM MO 65560
65535	ST JAMES MO 65559	SALEM MO 65560
65536	CROCKER MO 65452	ROLLA MO 65401
65541	ST JAMES MO 65559	SALEM MO 65560
65542	CUBA MO 65453	SALEM MO 65560

Column A Destination ZIP Codes	Column B Label Container To (Change From)	Column B Label Container To (Change To)
65543	FT LEONARD WOOD MO 65473	SALEM MO 65560
65546	BIRCH TREE MO 65438	SALEM MO 65560
65548	BIRCH TREE MO 65438	SALEM MO 65560
65550	ST JAMES MO 65559	SALEM MO 65560
65552	FT LEONARD WOOD MO 65473	SALEM MO 65560
65555	BIRCH TREE MO 65438	SALEM MO 65560
65556	FT LEONARD WOOD MO 65473	SALEM MO 65560
65557	FT LEONARD WOOD MO 65473	SALEM MO 65560
65559	ST JAMES MO 65559	SALEM MO 65560
65560	CUBA MO 65453	SALEM MO 65560
65564	BIRCH TREE MO 65438	SALEM MO 65560
65565	CUBA MO 65453	SALEM MO 65560
65566	CUBA MO 65453	SALEM MO 65560
65567	CROCKER MO 65452	SALEM MO 65560
65570	BIRCH TREE MO 65438	SALEM MO 65560
65571	BIRCH TREE MO 65438	SALEM MO 65560
65580	ST JAMES MO 65559	SALEM MO 65560
65582	ST JAMES MO 65559	SALEM MO 65560
65583	CROCKER MO 65452	ROLLA MO 65401
65584	FT LEONARD WOOD MO 65473	SALEM MO 65560
65586	CUBA MO 65453	SALEM MO 65560
65588	BIRCH TREE MO 65438	SALEM MO 65560
65589	BIRCH TREE MO 65438	SALEM MO 65560
65590	CROCKER MO 65452	SALEM MO 65560
65591	CROCKER MO 65452	SALEM MO 65560
65802	SPRINGFIELD MO 65802	SPRINGFIELD MO 65803
65810	SPRINGFIELD MO 65802	SPRINGFIELD MO 65807

Newly Added

Column A Destination ZIP Codes	Column B Label Container To (Added To)
65807	SPRINGFIELD MO 65807

Deleted

Column A Destination ZIP Codes	Column B Label Container To (Deleted From)
16301	WARREN PA 16365
21043	ELLCOTT CITY MD 21043
21088	FINKSBURG MD 21048
21405	ANNAPOLIS MD 21401
21409	ANNAPOLIS MD 21401
21412	ANNAPOLIS MD 21401
75001	CARROLLTON TX 75006
75006	CARROLLTON TX 75006
75011	CARROLLTON TX 75006
97204	PORTLAND OR 97204
97258	PORTLAND OR 97204

* * * * *

L015 3-Digit ZIP Code Prefix Groups – ADC Package Services Optional Sortation

Changes

Column A 3-Digit ZIP Code Prefix Group	Column B Label To (Change From)	Column B Label To (Change To)
356	ADC BIRMINGHAM AL 350	ADC BIRMINGHAM AL 357
357	ADC BIRMINGHAM AL 350	ADC BIRMINGHAM AL 357
358	ADC BIRMINGHAM AL 350	ADC BIRMINGHAM AL 357
807	ADC DENVER CO 808	ADC DENVER CO 800
814	ADC DENVER CO 808	ADC DENVER CO 800
815	ADC DENVER CO 808	ADC DENVER CO 800
816	ADC DENVER CO 808	ADC DENVER CO 800
820	ADC DENVER CO 808	ADC CHEYENNE WY 820
822	ADC DENVER CO 808	ADC CHEYENNE WY 820

Column A 3-Digit ZIP Code Prefix Group	Column B Label To (Change From)	Column B Label To (Change To)
823	ADC DENVER CO 808	ADC CHEYENNE WY 820
824	ADC DENVER CO 808	ADC CHEYENNE WY 820
825	ADC DENVER CO 808	ADC CHEYENNE WY 820
826	ADC DENVER CO 808	ADC CHEYENNE WY 820
827	ADC DENVER CO 808	ADC CHEYENNE WY 820
828	ADC DENVER CO 808	ADC CHEYENNE WY 820
	*	*

L201 Periodicals Origin Split and First-Class Mail Mixed ADC/AADC

Column A Originating ZIP Codes (Change From)	Column A Originating ZIP Codes (Change To)	Column B Label To (Change From)	Column B Label To (Change To)	Column C Label Container To (Change From)	Column C Label Container To (Change To)
339, 341	339, 341	005, 066, 068-119, 150-154, 156, 160-165, 169-201, 206-212, 214- 268, 270-342, 344, 346-347, 349-352, 354-418, 421-422, 425- 427, 430-433, 437-464, 469-474, 478-479, 498-499, 530-532, 534- 535, 537-539, 541-545, 549, 600-608, 610-611, 613-616, 620, 622-623, 625-631, 633-634, 636- 639, 700-701, 703-708, 710-714, 716-731, 733-738, 740-741, 743- 767, 770, 772-778, 786-787, 789	005, 066, 068-119, 150-154, 156, 160-165, 169-201, 206-212, 214- 268, 270-342, 344, 346-347, 349-352, 354-418, 421-422, 425- 427, 430-433, 437-464, 469-474, 478-479, 498-499, 530-532, 534- 535, 537-539, 541-545, 549, 600-608, 610-611, 613-616, 620, 622-623, 625-631, 633-634, 636- 639, 700-701, 703-708, 710-714, 716-729, 733, 750-767, 770, 772-778, 786-787, 789	FT MYERS FL 339	FT MYERS FL 339

Column A: No change.
 Column B deleted: 730-731, 734-738, 740-741, and 743-749.
 Column C: No change.

* * * * *

L606 5-Digit Scheme – Standard Mail, First-Class Mail, and Package Services Parcels

Changes

Column A Destination ZIP Codes	Column B Label Container To (Change From)	Column B Label Container To (Change To)
31901	COLUMBUS GA 31903	COLUMBUS GA 31901
31902	COLUMBUS GA 31902	COLUMBUS GA 31901
31904	COLUMBUS GA 31902	COLUMBUS GA 31901
31909	COLUMBUS GA 31902	COLUMBUS GA 31901
47901	LAFAYETTE IN 47901	LAFAYETTE IN 47905
47905	LAFAYETTE IN 47901	LAFAYETTE IN 47905
58705	MINOT ND 58701	MINOT AFB ND 58704
77346	HUMBLE TX 77338	HUMBLE TX 77346
77347	HUMBLE TX 77338	HUMBLE TX 77346

Deleted

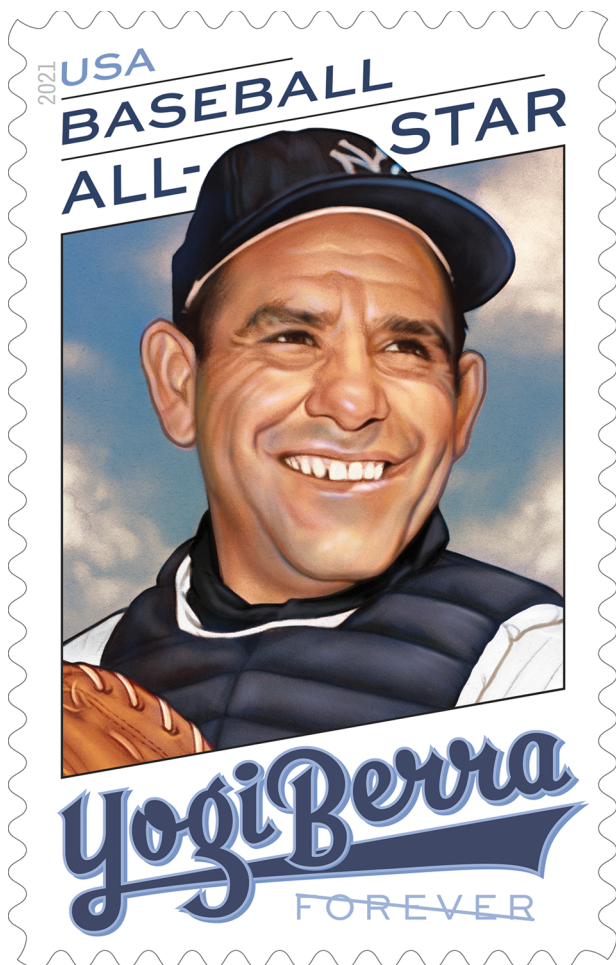
Column A Destination ZIP Codes	Column B Label Container To (Deleted From)
03452	JAFFREY NH 03452
03461	JAFFREY NH 03452
07720	BELMAR NJ 07719
46809	FORT WAYNE IN 46809
46819	FORT WAYNE IN 46809
58702	MINOT ND 58701
78705	AUSTIN TX 78705
78765	AUSTIN TX 78705
78773	AUSTIN TX 78705
89074	HENDERSON NV 89014
95901	MARYSVILLE CA 95901
95903	MARYSVILLE CA 95901
98107	SEATTLE WA 98107
98109	SEATTLE WA 98107
98117	SEATTLE WA 98107
98372	SUMNER WA 98390
98390	SUMNER WA 98390

Newly Added

Column A Destination ZIP Codes	Column B Label Container To (Added To)
08326	LANDISVILLE NJ 08326
08328	LANDISVILLE NJ 08326
08341	LANDISVILLE NJ 08326
08346	LANDISVILLE NJ 08326
58704	MINOT AFB ND 58704

Stamp Services

Stamp Announcement 21-19: Yogi Berra Stamp



©2021 USPS

On June 24, 2021, in Little Falls, NJ, the United States Postal Service® will issue the *Yogi Berra* stamp (Forever® priced at the First-Class Mail® rate) in one design, in a pressure-sensitive adhesive (PSA) pane of 20 stamps (Item 480300). This stamp will go on sale nationwide June 24, 2021, and must not be sold or canceled before the first-day-of-issue.

This stamp honors Yogi Berra (1925-2015), one of the best and most celebrated *Major League Baseball*™ players of his era, winning a record 10 *World Series*™ with the *New York Yankees*™. The stamp art is an original digital portrait of Berra dressed in his *Yankees* cap, pinstripes, and catcher's chest protector.

Considered the best catcher in the *American League*™ in the 1950s, he was also a feared hitter, and in 1972 was inducted into the National Baseball Hall of Fame. Antonio Alcalá was the project art director and stamp designer.

Charles Chaisson was the artist. The lettering for “Yogi Berra” was designed and created by Michael Doret.

Availability to Post Offices: Item 480300, Yogi Berra (Forever Priced at the First-Class Mail Rate) PSA Pane of 20 Stamps

Stamp Fulfillment Services will not make an automatic push distribution to Post Offices. Post Offices may begin ordering stamps before the first-day-of-issue through SFS Web at sfsweb.usps.gov.

Special Dedication Postmarks

Only the following pictorial postmark is permitted for the *Yogi Berra* stamp. The word “Station” or the abbreviation “STA” is required somewhere in the design because it will be a temporary station. Use of any image other than the following special pictorial image is prohibited.

Guidelines for Finalizing Yogi Berra Stamp Pictorial Postmark Art



To finalize the *Yogi Berra* stamp pictorial postmark art, insert the date, city, state, and ZIP Code™ of the physical location of your event adjacent to the stamp image. Overall dimensions of the pictorial postmark must not exceed 4 inches (horizontally) by 2 inches (vertically). Collectors prefer the dimensions 3-1/2 inches by 1 inch.

The Postal Service™ must make all special postmarks known to collectors through advance publicity in the *Postal Bulletin*. Therefore, all special dedication cancellations must be reported to Stamp Services 4 weeks before the event using PS Form 413, *Pictorial Postmark Announcement/Report*. To get a copy of the form, go to blue.usps.gov/formmgmt/forms/ps413.pdf.

How to Order the First-Day-of-Issue Postmark

Customers have 120 days to obtain the first-day-of-issue postmark by mail. They may purchase new stamps at their local Post Office™ or at The Postal Store® website at usps.com/shop. They must affix the stamps to envelopes of their choice, address the envelopes (to themselves or others), and place them in a larger envelope addressed to:

FDI – Yogi Berra Stamp
 USPS Stamp Fulfillment Services
 8300 NE Underground Drive, Suite 300
 Kansas City, MO 64144-9900

After applying the first-day-of-issue postmark, the Postal Service will return the envelopes through the mail. There is no charge for the postmark up to a quantity of 50. There is a 5-cent charge for each additional postmark over 50. All orders must be postmarked by October 24, 2021.

How to Order First-Day Covers

The Postal Service also offers first-day covers for new stamp issues and Postal Service stationery items postmarked with the official first-day-of-issue cancellation. Each item has an individual catalog number and is offered in the *USA Philatelic* catalog and online at usps.com/shop. Customers may register to receive a free *USA Philatelic* catalog online at usps.com/philatelic.

Locally produced items are not authorized. Only merchandise that has been approved and assigned an item number by Headquarters Retail Marketing may be produced and sold.

Issue:	Yogi Berra Stamp
Item Number:	480300
Denomination & Type of Issue:	First-Class Mail Forever
Format:	Pane of 20 (1 design)
Series:	N/A
Issue Date & City:	June 24, 2021, Little Falls, NJ 07424
Art Director:	Antonio Alcalá, Alexandria, VA
Designer:	Antonio Alcalá, Alexandria, VA
Artist:	Charles Chaisson, New York, NY
Modeler:	Sandra Lane / Michelle Finn
Manufacturing Process:	Flexographic, Offset, Microprint
Printer:	Banknote Corporation of America
Press Type:	Gallus RCS
Stamps per Pane:	20
Print Quantity:	25,000,000 stamps
Paper Type:	Phosphor, Block Tag
Adhesive Type:	Pressure-sensitive
Colors:	Black, Cyan, Magenta, Yellow, Blue PMS 2135, Blue PMS 2767, Blue PMS 7681
Stamp Orientation:	Vertical
Image Area (w x h):	0.84 x 1.42 in. / 21.336 x 36.068 mm
Overall Size (w x h):	0.98 x 1.56 in. / 24.892 x 39.624 mm
Full Pane Size (w x h):	5.92 x 7.75 in. / 150.368 x 196.85 mm
Press Sheets Size (w x h):	23.25 x 11.84 in. / 590.55 X 300.736 mm
Plate Size:	120 stamps per revolution
Plate Number:	“B” followed by seven (7) single digits in bottom two corners
Marginal Markings:	
Front:	Header: Major League Baseball™ All-Star • Plate number in bottom two corners
Back:	©2021 USPS • USPS logo • 2 barcodes (480300) • Plate position diagram (6) • Promotional text • MLB info

— Stamp Services,
 Marketing, 6-17-21

Stamp Announcement 21-20: Mystery Message Stamp



On July 14, 2021, in Washington, DC, the United States Postal Service® will issue the *Mystery Message* stamp (Forever® priced at the First-Class Mail® rate) in one design, in a pressure-sensitive adhesive (PSA) pane of 20 stamps (Item 480700). This stamp will go on sale nationwide July 14, 2021, and must not be sold or canceled before the first-day-of-issue.

The new *Mystery Message* stamp is designed to put your sleuthing skills to the test! Featuring bright colors and interesting shapes, the stamp design is a visual riddle spelling out a difficult-to-discern message. Each colorful square contains a letter in an interesting pattern. The patterns, though seemingly random, were carefully placed so that when put all together, the message reads, “More Than Meets the Eye!” The reverse side of the pane provides the solution. Art director Antonio Alcalá designed the stamp.

Availability to Post Offices: Item 480700, *Mystery Message* (Forever Priced at the First-Class Mail Rate) PSA Pane of 20 Stamps

Stamp Fulfillment Services will not make an automatic push distribution to Post Offices. Post Offices may begin ordering stamps before the first-day-of-issue through SFS Web at sfsweb.usps.gov.

How to Order the First-Day-of-Issue Postmark

Customers have 120 days to obtain the first-day-of-issue postmark by mail. They may purchase new stamps at their local Post Office™ or at The Postal Store® website at usps.com/shop. They must affix the stamps to envelopes

of their choice, address the envelopes (to themselves or others), and place them in a larger envelope addressed to:

FD0I – Mystery Message Stamp
USPS Stamp Fulfillment Services
8300 NE Underground Drive, Suite 300
Kansas City, MO 64144-9900

After applying the first-day-of-issue postmark, the Postal Service will return the envelopes through the mail. There is no charge for the postmark up to a quantity of 50. There is a 5-cent charge for each additional postmark over 50. All orders must be postmarked by November 14, 2021.

How to Order First-Day Covers

The Postal Service also offers first-day covers for new stamp issues and Postal Service stationery items postmarked with the official first-day-of-issue cancellation. Each item has an individual catalog number and is offered in the *USA Philatelic* catalog and online at usps.com/shop. Customers may register to receive a free *USA Philatelic* catalog online at usps.com/philatelic.

Locally produced items are not authorized. Only merchandise that has been approved and assigned an item number by Headquarters Retail Marketing may be produced and sold.

Issue:	<i>Mystery Message</i> Stamp
Item Number:	480700
Denomination & Type of Issue:	First-Class Mail Forever
Format:	Pane of 20 (1 design)
Series:	N/A
Issue Date & City:	July 14, 2021, Washington, DC 20066
Art Director:	Antonio Alcalá, Alexandria, VA
Designer:	Antonio Alcalá, Alexandria, VA
Modeler:	Sandra Lane / Michelle Finn
Manufacturing Process:	Flexographic, Offset, Microprint
Printer:	Banknote Corporation of America
Press Type:	Gallus RCS
Stamps per Pane:	20
Print Quantity:	20,000,000 stamps
Paper Type:	Phosphor, Block Tag
Adhesive Type:	Pressure-sensitive
Colors:	Cyan, Magenta, Yellow, Gray PMS Cool Gray 5C
Stamp Orientation:	Vertical
Image Area (w x h):	1.085 x 1.085 in. / 27.559 x 27.559 mm
Overall Size (w x h):	1.225 x 1.225 in. / 31.115 x 31.115 mm
Full Pane Size (w x h):	5.8375 x 7.12 in. / 148.272 x 180.848 mm
Press Sheets Size (w x h):	14.24 x 23.35 in. / 361.696 X 593.09 mm
Plate Size:	160 stamps per revolution
Plate Number:	“B” followed by four (4) single digits in bottom two corners
Marginal Markings:	
Front:	Header: <i>Mystery Message</i> • Plate number in bottom two corners
Back:	©2020 USPS • USPS logo • 2 barcodes (480700) • Plate position diagram (8) • Promotional text • “More Than Meets The Eye!”

— Stamp Services,
Marketing, 6-17-21

Pull-Out Information

Fraud

Invalid USPS Corporate Account Numbers

Provide this listing to Contract Postal Units and acceptance clerks in non-POS locations without intranet access to validate a USPS Corporate Account (USPSCA) number online. For all other locations, online USPSCA validation is preferred. This list supersedes all previous notices, which you must recycle.

Acceptance clerks must not accept Priority Mail Express® shipments bearing an invalid USPSCA number in the "Payment by Account" or "Agreement Number" section of the label or form.

Note: The first 6 digits of a 9-digit Custom Designed Service and Next Day Pickup Agreement make up the Corporate Account Number.

005003	008360	115081	115732	117688	119072	192390	483952	491119	497317	741269	930037	982636
005019	008445	115086	115756	117759	119084	207595	484050	493321	498100	741358	939052	982649
005090	008474	115103	115785	117772	119099	300056	486276	493322	528014	741536	950001	982654
005099	008561	115107	115888	117795	119105	301521	486344	494263	600556	741628	950336	982662
005106	008689	115130	115938	117918	119148	303523	486345	494264	606440	741639	950621	982667
005127	008913	115137	115959	117977	119151	320011	486348	494265	607377	744079	950945	982672
005131	009523	115152	117002	118031	119153	320014	486351	494266	608128	750066	951013	982675
005168	011419	115187	117021	118033	119163	321031	487282	494269	608239	751175	951211	982702
005313	020299	115206	117024	118043	119208	322001	487284	494272	641616	752002	951360	984008
005341	022176	115230	117040	118051	119220	322993	488025	494273	641776	758010	968452	985241
005512	023437	115232	117041	118052	119234	323132	488048	494275	681149	765622	970359	988054
005514	028004	115244	117052	118172	119241	325128	488052	494277	681436	767567	970835	992775
005519	038438	115261	117072	118197	119289	327064	488057	494278	701002	782005	971028	992790
005525	038573	115285	117078	118225	119331	329021	488061	494280	708402	787171	973208	995144
005587	042005	115306	117090	118242	119408	330055	488063	494281	730120	797033	975038	995333
005625	064138	115351	117110	118257	119471	334175	488065	495126	730131	799222	980135	995439
005627	064600	115357	117136	118321	119493	336294	488066	495128	730400	799283	980143	995461
005639	070644	115372	117144	118371	119501	340593	489480	495136	730734	799290	980511	995586
005667	070992	115472	117153	118390	119533	340766	489493	495145	730788	799313	980615	995787
005717	071054	115483	117158	118475	119541	341002	489501	495147	731036	804219	980755	997179
005758	071245	115494	117236	118531	119551	344021	489502	495148	731051	820100	980878	998003
005762	075017	115514	117244	118636	119588	344039	489503	495150	731342	824007	981663	998100
005860	075511	115515	117271	118689	119598	370013	489504	495151	731457	836907	981674	998150
005936	080051	115517	117308	118810	119655	462562	489510	495154	731881	852594	982047	
005978	100640	115539	117390	118846	122183	464189	489511	495362	735022	853865	982100	
007219	108245	115545	117424	118866	129908	480090	490721	496075	740141	913790	982306	
008003	115014	115559	117446	118883	152046	481193	490727	496203	740356	914101	982429	
008093	115016	115566	117473	118931	156221	481233	490729	496205	740525	915622	982526	
008154	115039	115604	117524	118943	174053	481349	490730	496207	740992	917104	982548	
008185	115051	115606	117530	118966	178059	481516	490732	496209	740993	917196	982604	
008198	115053	115621	117538	119034	178074	481600	490734	497311	741136	921883	982615	
008296	115074	115730	117598	119048	191370	483464	490738	497315	741150	927057	982631	

— Product Information Requirements, Mail Entry and Payment Technology, 6-17-21

USPS® Serves Up *Espresso Drinks*

Forever®
Stamps

On Sale
Nationwide:
April 9, 2021



Missing, Lost, or Stolen U.S. Money Order Forms

Do Not Cash — Upon Receipt, Notify Local Postal Inspectors

Provide this listing to all Postal Service™ employees responsible for accepting and cashing postal money orders. Destroy all interim notices when the numbers listed appear in the *Postal Bulletin*. The new money order serial

numbers consist of the first 10 digits. The eleventh digit is a check digit only.

Do not cash outdated money orders **104 151 601 to 692 600 000**. Advise holders to send invalid money orders to Canada Post Corporation, Ottawa, Canada K1A 0B1. Check for altered dollar amounts by holding money orders to the light.

010 001 0200 to 0299	043 205 5922 to 5999	083 784 8886 to 8899	174 281 9347 to 9399
010 504 1932 to 1999	044 087 3457 to 3499	083 913 6915 to 6999	175 251 2600 to 0699
011 582 1889 to 1899	044 087 4000 to 4099	084 478 3920 to 3999	176 281 7937 to 7950
011 588 2900 to 3099	044 226 2487 to 2512	086 000 8271 to 8299	176 281 7963 to 7999
012 441 0784 to 0799	044 306 4200 to 4299	086 798 3840 to 3849	176 731 6586 to 6599
012 579 5675 to 5699	044 306 4370 to 4599	088 404 4472 to 4499	178 254 5000 to 9999
013 289 6176 to 6199	045 524 4121 to 4298	088 404 5584 to 5699	178 881 9900 to 9999
013 610 0014 to 0099	046 800 9870 to 9899	088 757 8688 to 8699	180 031 2089 to 2098
014 932 1000 to 1099	047 352 4000 to 4099	088 757 9400 to 9499	180 403 7723 to 7741
014 972 0800 to 0899	048 383 7650 to 7659	089 358 2248 to 2257	180 428 4580 to 0599
015 363 0065 to 0099	048 396 3647 to 3699	090 663 9678 to 9684	182 368 7544 to 0599
017 028 3200 to 3299	051 142 0755 to 0799	091 818 0071 to 0099	182 475 3229 to 3258
018 569 5333 to 5399	051 774 8857 to 8899	093 106 9346 to 9355	182 475 3904 to 3933
018 986 5264 to 5299	051 781 2875 to 2885	093 203 0500 to 0599	182 631 0031 to 0099
019 518 2814 to 2899	051 977 7010 to 7023	093 684 3630 to 3699	182 911 6539 to 6600
020 698 5159 to 5199	052 058 7115 to 7199	094 081 5074 to 5099	184 218 2760 to 2799
020 844 7307 to 7399	054 450 1130 to 1167	094 216 2555 to 2599	185 828 1474 to 1499
020 972 8948 to 8999	057 670 0563 to 0599	094 580 7062 to 7099	186 132 7583 to 0599
022 021 9110 to 9181	058 187 3836 to 3899	094 639 4200 to 4299	186 629 0589 to 0599
022 037 1411 to 1499	058 523 3003 to 3099	095 070 7186 to 7199	187 184 6177 to 0199
022 527 9201 to 9210	058 591 1153 to 1299	095 076 8300 to 8399	187 323 8200 to 8299
022 529 1882 to 1899	058 895 3746 to 3799	095 354 6864 to 6899	187 441 6080 to 6099
023 637 7169 to 7199	059 986 0814 to 0899	097 224 1350 to 1599	188 831 6774 to 6799
024 380 4100 to 4199	060 406 7650 to 7699	100 160 3800 to 3899	188 835 6370 to 6399
024 496 6870 to 6896	063 491 8122 to 8199	104 667 6400 to 6499	189 083 1064 to 1099
025 092 0987 to 0999	063 916 9968 to 9999	104 876 8937 to 8999	189 660 9583 to 9599
025 369 5535 to 5599	064 091 4500 to 4599	112 049 4413 to 4499	191 179 0377 to 0399
025 729 1151 to 1199	065 170 0471 to 0499	112 870 9765 to 9799	192 050 5762 to 5781
025 729 1643 to 1799	065 255 7909 to 7999	113 319 2000 to 2099	194 456 8600 to 0699
026 492 3180 to 3199	065 392 6345 to 6399	114 402 3850 to 3899	195 194 6881 to 6899
027 361 0430 to 0499	066 099 2014 to 2099	114 866 5368 to 5397	195 874 1112 to 1199
027 369 4482 to 4495	066 648 2880 to 2899	116 154 2800 to 2899	196 979 0524 to 0599
027 671 8762 to 8776	066 787 3639 to 3699	116 986 4400 to 4499	197 244 6100 to 6199
027 787 9886 to 9899	066 845 7500 to 9999	117 175 1647 to 5169	197 244 6300 to 6399
027 965 9487 to 9499	067 093 3869 to 3899	117 951 4687 to 4699	197 244 6400 to 6499
028 100 8069 to 8099	068 895 0334 to 0399	117 951 5200 to 5299	197 244 6500 to 6599
028 191 1852 to 1999	070 724 4488 to 4499	119 786 3051 to 3064	197 244 6600 to 6699
028 850 3000 to 3199	070 841 9181 to 9199	119 815 8961 to 6199	197 244 6700 to 6799
029 510 1500 to 1599	070 844 2546 to 2599	119 850 7400 to 7499	197 244 6800 to 8999
030 687 0903 to 0999	070 916 1340 to 1399	119 850 7700 to 7999	198 285 2556 to 2566
030 701 3442 to 3499	071 047 5768 to 5799	121 634 0460 to 0499	199 105 0778 to 0799
031 077 4507 to 4799	071 179 9800 to 9899	122 451 9879 to 9899	199 678 2968 to 2999
032 295 7500 to 9999	071 386 3682 to 3699	122 714 6805 to 6900	202 748 5133 to 5199
034 394 1000 to 1099	071 507 6840 to 6899	124 916 0304 to 0499	202 748 5245 to 5299
034 943 0400 to 0799	072 045 9641 to 9699	126 423 0136 to 0169	202 748 5300 to 5399
035 035 4337 to 4399	072 675 8287 to 8299	127 500 2328 to 2399	202 748 5400 to 5499
037 312 7500 to 7599	073 763 0867 to 0876	160 901 2254 to 2299	203 256 1240 to 1299
037 706 9578 to 9599	073 763 0878 to 0887	161 103 6581 to 6599	204 230 3577 to 3595
037 805 3677 to 3699	073 763 0889 to 0898	161 194 2857 to 0899	205 019 0174 to 0199
037 909 5490 to 5499	077 617 5481 to 5499	162 032 4447 to 4499	206 936 3184 to 3199
037 931 4660 to 4699	077 999 4001 to 4090	163 257 1085 to 1099	207 196 9900 to 9999
039 145 6521 to 6595	078 174 4475 to 4499	164 359 2406 to 2499	207 204 0700 to 0799
040 024 3901 to 3999	078 219 4931 to 4999	166 101 1433 to 1499	207 204 0800 to 0899
040 674 7100 to 7199	078 250 4756 to 4799	167 555 5201 to 5212	207 514 3857 to 3899
040 688 8816 to 8899	078 823 8312 to 8399	167 555 5214 to 5299	208 556 4707 to 4799
041 299 6752 to 6799	079 374 0300 to 2499	169 618 6274 to 6299	210 057 4038 to 4047
041 623 8889 to 8899	079 807 2342 to 2399	171 806 6878 to 6893	210 221 0548 to 0599
041 803 6565 to 6599	082 721 0228 to 0254	173 639 4685 to 4699	214 061 4711 to 4724
043 129 1968 to 1997	083 140 5000 to 7499	174 238 2779 to 2799	214 303 6311 to 6325

214 303 6239	to	6258	252 469 2125	to	2199	258 405 6400	to	6499	262 337 4500	to	4599
214 877 4251	to	4273	252 833 3286	to	3297	258 405 6800	to	6899	262 337 4600	to	4699
215 252 3918	to	3992	253 470 3948	to	3999	258 405 6900	to	6999	262 337 4700	to	4799
217 585 1400	to	1499	253 565 7400	to	7499	258 405 7000	to	7099	262 337 4800	to	4899
218 698 2157	to	2199	254 252 2800	to	2899	258 405 7100	to	7199	262 337 4900	to	4999
218 746 0800	to	0899	254 252 2900	to	2999	258 405 7200	to	7299	262 337 5000	to	5099
219 095 0100	to	0399	254 252 3000	to	3099	258 405 7300	to	7399	262 337 5100	to	5199
219 389 1885	to	1899	254 252 3100	to	3199	258 405 7400	to	7499	262 337 5200	to	5299
219 568 7435	to	7456	254 252 3200	to	3299	258 405 7800	to	7899	262 337 5300	to	5399
219 568 7469	to	7487	254 252 3300	to	3399	258 405 7900	to	7999	262 337 5400	to	5499
221 316 5757	to	5799	254 252 3400	to	3499	258 405 8000	to	8099	262 337 5500	to	5599
223 476 3914	to	3999	254 252 3500	to	3599	258 405 8100	to	8199	262 337 5600	to	5699
223 565 4921	to	4957	254 252 3600	to	3699	258 405 8200	to	8299	262 337 5700	to	5799
223 565 4979	to	4999	254 252 3700	to	3799	258 405 8300	to	8399	262 337 5800	to	5899
224 636 4745	to	4765	254 252 3800	to	3899	258 405 8400	to	8499	262 337 5900	to	5999
224 636 4776	to	4799	254 252 3900	to	3999	258 405 8500	to	8599	262 337 6000	to	6099
224 636 4855	to	4885	254 252 4000	to	4099	258 405 8600	to	8699	262 337 6100	to	6199
224 636 4932	to	4948	254 252 4100	to	4199	258 405 8700	to	8799	262 337 6200	to	6299
224 636 4950	to	4962	254 252 4200	to	4299	258 405 8800	to	8899	262 337 6300	to	6399
224 636 4985	to	4999	254 252 4300	to	4399	258 405 8900	to	8999	262 337 6400	to	6499
224 723 0757	to	0799	254 252 4400	to	4499	258 405 9600	to	9699	262 337 6500	to	6599
224 730 2207	to	2299	254 252 4500	to	4599	258 405 9700	to	9799	262 337 6600	to	6699
225 970 0500	to	0599	254 252 4600	to	4699	258 405 9800	to	9899	262 337 6700	to	6799
225 970 0600	to	0699	254 252 4700	to	4799	258 405 9900	to	9999	262 337 6800	to	6899
225 970 0700	to	0799	254 252 4800	to	4899	259 014 9989	to	9999	262 337 6900	to	6999
227 033 8679	to	8699	254 252 4900	to	4999	259 062 4788	to	4798	262 337 7000	to	7099
227 275 9400	to	9999	254 565 7607	to	7700	259 218 1400	to	1499	262 337 7100	to	7199
228 463 2456	to	2499	254 907 1203	to	1299	259 218 1500	to	1599	262 337 7200	to	7299
228 510 4852	to	4899	255 185 9527	to	9599	259 218 1600	to	1699	262 337 7300	to	7399
229 462 8451	to	8475	255 397 1557	to	1576	259 590 5654	to	5699	262 337 7400	to	7499
229 668 5977	to	5999	255 425 2989	to	2998	259 670 8268	to	8299	262 337 7500	to	7599
229 923 9176	to	9199	255 728 6412	to	6499	259 835 6238	to	6399	262 337 7600	to	7699
229 924 6696	to	6699	255 728 9842	to	9899	259 835 6701	to	6799	262 337 7700	to	7799
230 051 9500	to	9999	256 134 9833	to	9839	260 224 4600	to	4699	262 337 7800	to	7899
236 366 2431	to	2499	256 134 9840	to	9849	260 224 5941	to	5999	262 337 7900	to	7999
236 607 6882	to	6899	256 134 9850	to	9859	260 310 2821	to	2899	262 337 8000	to	8099
236 660 5853	to	5872	256 134 9860	to	9869	260 452 0010	to	0022	262 337 8100	to	8199
239 322 5200	to	5299	256 134 9870	to	9879	260 452 0049	to	4299	262 337 8200	to	8299
239 322 5400	to	5499	256 134 9880	to	9889	260 553 8200	to	8299	262 337 8300	to	8399
239 322 5600	to	5699	256 134 9890	to	9899	260 553 8600	to	8699	262 337 8400	to	8499
239 322 5800	to	5899	256 247 6900	to	6999	260 553 9600	to	9799	262 337 8500	to	8599
239 322 5900	to	5999	256 550 5536	to	5545	260 553 9800	to	9899	262 337 8600	to	8699
239 607 4783	to	4799	256 799 2257	to	2299	260 553 9900	to	9999	262 337 8700	to	8799
240 593 1879	to	1899	257 154 8763	to	8799	260 761 1603	to	1662	262 337 8800	to	8899
242 591 2048	to	2099	257 154 8800	to	8899	261 183 2100	to	2299	262 337 8900	to	8999
242 735 0388	to	0398	257 765 4567	to	4599	261 426 0408	to	0499	262 337 9000	to	9099
242 951 7276	to	7299	257 765 4610	to	4696	262 082 8000	to	8099	262 337 9100	to	9199
243 535 6370	to	6399	257 765 4737	to	4799	262 082 8100	to	8199	262 337 9200	to	9299
244 004 9985	to	9999	257 792 7800	to	7889	262 082 8200	to	8299	262 337 9300	to	9399
244 004 9985	to	9999	257 792 7900	to	7999	262 082 8300	to	8399	262 337 9400	to	9499
244 268 9765	to	9799	257 792 8000	to	8099	262 082 8400	to	8499	262 337 9500	to	9599
244 347 4471	to	4499	257 856 9863	to	9899	262 288 7302	to	7399	262 337 9600	to	9699
249 056 1551	to	1599	258 103 1773	to	1782	262 288 7400	to	7499	262 337 9700	to	9799
249 336 9438	to	9499	258 405 1800	to	1899	262 288 9900	to	9999	262 337 9800	to	9899
249 399 4000	to	4099	258 405 1900	to	1999	262 337 2600	to	2699	262 337 9900	to	9999
249 399 4100	to	4199	258 405 3300	to	3399	262 337 2700	to	2700	262 472 3188	to	3199
249 399 4200	to	4299	258 405 3400	to	3499	262 337 2800	to	2800	262 472 3200	to	3299
249 399 4300	to	4399	258 405 3500	to	3599	262 337 2900	to	2900	262 546 3100	to	3199
249 399 4400	to	4499	258 405 3700	to	3799	262 337 3000	to	3099	262 546 3200	to	3299
249 399 4500	to	4599	258 405 3800	to	3899	262 337 3100	to	3199	262 546 3300	to	3399
249 399 4600	to	4699	258 405 3900	to	3999	262 337 3200	to	3299	262 546 3400	to	3499
249 399 4700	to	4799	258 405 4000	to	4099	262 337 3300	to	3399	262 546 3500	to	3599
249 399 4800	to	4899	258 405 4100	to	4199	262 337 3400	to	3499	262 546 3600	to	3699
249 399 4900	to	4999	258 405 4200	to	4299	262 337 3500	to	3599	262 546 3900	to	3999
250 159 7502	to	7599	258 405 4600	to	4699	262 337 3600	to	3699	262 546 4300	to	4399
250 566 9644	to	9699	258 405 5600	to	5699	262 337 3700	to	3799	262 546 4400	to	4499
250 661 8425	to	8499	258 405 5700	to	5799	262 337 3800	to	3899	262 546 4500	to	4599
251 335 5731	to	5799	258 405 5800	to	5899	262 337 3900	to	3999	262 546 4600	to	4699
251 379 2380	to	2399	258 405 5900	to	5999	262 337 4000	to	4099	262 546 4700	to	4799
252 005 7626	to	7699	258 405 6000	to	6099	262 337 4100	to	4199	262 546 4800	to	4899
252 421 8401	to	8499	258 405 6100	to	6199	262 337 4200	to	4299	262 546 4900	to	4999
252 464 2810	to	2899	258 405 6200	to	6299	262 337 4300	to	4399	262 546 7100	to	7199
252 612 3683	to	3699	258 405 6300	to	6399	262 337 4400	to	4499	262 546 7200	to	7299

262 546 7300 to 7399
 262 546 7400 to 7499
 262 546 9800 to 9899
 262 546 9900 to 9999
 262 567 1788 to 1799
 263 254 2500 to 2500
 263 340 0000 to 0099
 263 340 0100 to 0199
 263 340 0500 to 0599
 263 340 0600 to 0699
 263 340 2700 to 2799
 263 340 2800 to 2899
 263 340 3000 to 3099
 264 341 2360 to 2399
 264 380 4000 to 4099
 264 380 4100 to 4199
 264 799 6049 to 6099
 264 860 7832 to 7868
 265 127 3658 to 3699
 265 380 7111 to 7137
 265 444 4762 to 4799
 265 548 7074 to 7099
 266 106 0000 to 2499
 266 129 5809 to 5899
 266 673 0000 to 2499
 266 749 7900 to 7999
 266 868 0952 to 0999
 266 868 1028 to 1099
 266 868 1100 to 1199
 266 868 1200 to 1299
 267 296 1237 to 1299
 267 324 8946 to 8998
 268 072 1203 to 1299
 273 775 7700 to 7899
302 000 0000 to 9999
349 746 2056 to 2099
350 518 7350 to 7374
360 011 1690 to 1699
 360 168 6008 to 6099
 360 173 8800 to 8899
 360 324 2326 to 2399
 362 861 3064 to 3099
373 006 2176 to 2199
 374 768 2600 to 2699
 375 169 4400 to 4599
 375 829 3400 to 3499
 375 851 9100 to 9199
 376 196 0911 to 0999
 378 085 3679 to 3699
 378 351 1063 to 1099
 379 843 5100 to 5199
380 093 9600 to 9699
 380 165 1165 to 1199
 381 325 4500 to 4599
 381 604 2510 to 2699
 381 645 9525 to 9599
 383 314 3968 to 3999
 383 892 1000 to 1344
 383 892 1382 to 1399
 384 925 3641 to 3654
 385 568 2331 to 2399
 385 599 7554 to 7575
 385 774 2024 to 2099
 386 624 1412 to 1599
 386 883 8936 to 8999
 387 314 5574 to 5599
 387 837 6300 to 6399
 388 828 0656 to 0699
 389 696 2400 to 2799
 389 846 3104 to 3135
 389 846 3145 to 3195
 389 887 9211 to 9230
 389 887 9234 to 9299

390 001 3182 to 3199
 390 001 3500 to 3699
 390 545 5974 to 5999
 391 104 6146 to 6199
 391 574 1466 to 1499
 391 783 3020 to 3599
 391 792 6100 to 6199
 392 668 2956 to 2999
 392 854 8500 to 8899
 393 584 7566 to 7699
 393 650 0074 to 0099
 393 838 8316 to 8499
 393 893 6007 to 6099
 394 126 6907 to 6999
 394 189 0405 to 0599
 394 822 3243 to 3278
 394 990 1810 to 1899
 395 343 3264 to 3299
 395 373 3035 to 3099
 395 396 9649 to 9799
 395 970 3240 to 3299
 397 622 4054 to 4099
 397 819 8902 to 8999
 398 149 7200 to 7699
 399 070 0872 to 0899
 399 156 7119 to 7199
 399 203 5064 to 5099
 399 296 9910 to 9999
 399 396 8935 to 8999
 399 792 7775 to 7799
 399 792 8300 to 8399
400 427 1051 to 1999
 401 045 1505 to 1549
 401 045 1571 to 1599
 401 294 2700 to 2799
 401 310 9505 to 9599
 401 382 5312 to 5399
 402 578 7876 to 7899
 403 125 6744 to 6799
 403 260 7000 to 7499
 403 280 6470 to 6499
 403 685 8600 to 8699
 404 003 0300 to 0399
 404 041 8838 to 8899
 404 071 4268 to 4299
 404 347 5356 to 5399
 404 347 5548 to 5599
 404 726 4500 to 4599
 404 961 5001 to 5199
 405 325 0188 to 0198
 406 009 4587 to 4599
 406 260 6830 to 6899
 406 459 6641 to 6999
 406 733 3000 to 3999
 407 545 1557 to 1599
 407 594 0412 to 0599
 407 692 9100 to 9299
 407 959 2190 to 2199
 408 265 2275 to 2288
 408 499 7700 to 7799
 408 499 7900 to 7999
 408 682 8484 to 8599
 408 698 7015 to 7099
 409 072 3941 to 3999
410 491 2311 to 2399
 410 694 8400 to 8599
 410 775 1500 to 1599
 410 795 7927 to 7999
 410 867 0917 to 0966
 410 867 0970 to 0999
 411 868 1023 to 1199
 411 922 2322 to 2399
 412 193 0900 to 0999

412 395 8599 to 8699
 412 485 6500 to 6599
 412 485 6610 to 6699
 412 885 5953 to 5999
 414 193 3608 to 3674
 414 193 3677 to 3699
 414 411 7348 to 7399
 414 640 0757 to 0799
 414 965 1727 to 1799
 417 302 8104 to 8199
 417 387 6532 to 6599
 417 496 6800 to 6999
 417 871 9250 to 9299
 417 930 9533 to 9599
 418 164 6500 to 6799
 418 423 9863 to 9899
 418 633 5922 to 5999
 418 719 8520 to 8599
 418 744 2235 to 2299
 418 962 2848 to 2899
 419 543 0286 to 0299
 419 730 0300 to 0399
420 277 0015 to 0049
 420 599 0734 to 0798
 420 661 4115 to 4199
 420 758 9500 to 9699
 420 969 3951 to 3971
 420 969 3973 to 3999
 421 116 3565 to 3599
 421 130 9300 to 9399
 421 313 4500 to 4999
 421 364 5537 to 5599
 421 656 2609 to 2699
 421 988 9700 to 9799
 422 172 4667 to 4699
 422 484 4212 to 4299
 422 556 1270 to 1299
 422 587 7024 to 7099
 422 819 7533 to 7599
 422 842 5073 to 5087
 422 907 7563 to 7599
 424 500 6050 to 6099
 424 641 8500 to 8599
 424 871 6600 to 6699
 425 298 2352 to 2399
 425 418 4269 to 4299
 425 418 4405 to 4499
 426 547 4566 to 4599
 427 412 6337 to 6499
 427 481 0900 to 0999
 428 027 2742 to 2752
 429 474 4172 to 4199
 429 889 2900 to 2999
430 150 4401 to 4599
 430 172 9800 to 9899
 430 177 1900 to 2099
 430 444 9500 to 9699
 430 664 4070 to 4099
 432 168 8419 to 8499
 432 708 6800 to 6999
 432 744 1544 to 1599
 432 995 9775 to 9799
 433 003 5800 to 5899
 433 757 3047 to 3099
 433 765 4003 to 4099
 434 482 7060 to 7199
 434 513 2386 to 2399
 434 968 3076 to 3092
 435 303 1831 to 1842
 435 303 1986 to 1999
 435 666 6092 to 6399
 436 082 6400 to 6899
 436 160 6441 to 6499

437 316 7115 to 7199
 437 427 0500 to 3499
 439 179 2300 to 2399
 439 310 0458 to 0499
440 698 1947 to 1999
 440 858 6300 to 6399
 440 858 6420 to 7299
 441 199 1655 to 1699
 443 127 3648 to 3699
 443 127 4000 to 4099
 443 673 7900 to 7999
 443 800 9335 to 9399
 444 382 8822 to 8899
 444 390 1667 to 1699
 444 457 3854 to 3899
450 048 4173 to 4199
 450 048 4442 to 4699
 450 560 5173 to 5199
 450 620 3077 to 3099
 450 620 3135 to 3199
 450 780 2716 to 2799
 450 801 2700 to 2799
 451 109 2967 to 2984
 451 115 4110 to 4125
 451 115 4127 to 4199
 451 746 0700 to 0799
 452 265 0074 to 0099
 452 265 0246 to 0299
 452 265 0335 to 0999
 452 509 1169 to 1199
 452 855 6471 to 6499
 452 890 4679 to 4799
 452 900 8215 to 8238
 453 117 9146 to 9199
 453 334 3631 to 3699
 453 603 7841 to 7891
 453 650 1140 to 1199
 453 741 1300 to 1399
 454 013 2919 to 2999
 454 186 2411 to 2499
 454 268 4883 to 4899
 454 302 5400 to 5499
 454 490 8300 to 8399
 454 547 7434 to 7499
 454 922 4867 to 4895
 455 221 1348 to 1499
 455 364 2147 to 2199
 455 399 5400 to 5499
 455 476 0676 to 0699
 455 543 0618 to 0699
 456 410 9006 to 9099
 456 470 4146 to 4299
 456 619 4460 to 4499
 457 333 2686 to 2699
 457 729 1767 to 1777
 457 937 8615 to 8699
 458 028 9810 to 9899
 458 057 2712 to 2999
 458 069 9537 to 9599
 458 069 9665 to 9699
 458 337 5222 to 5299
 458 354 7653 to 7999
 458 671 8678 to 8699
 458 671 8721 to 8798
 458 847 5044 to 5999
 459 274 7624 to 7699
 459 365 5432 to 5499
 459 378 5764 to 5799
 459 472 4816 to 4999
460 349 6878 to 6899
 460 550 1909 to 1999
 460 997 5234 to 5299
 461 973 6443 to 6499

462 152 0107	to	0299	481 673 0074	to	0095	504 045 4030	to	4099	609 438 4400	to	4499
462 274 1072	to	1099	482 527 1500	to	1599	504 166 0200	to	0599	609 493 1100	to	1199
462 277 8373	to	8399	482 541 5255	to	5299	504 240 1062	to	1399	609 766 8091	to	8999
462 554 6051	to	6099	482 729 6800	to	6899	504 805 3300	to	3499	609 825 4100	to	4115
463 011 5529	to	5540	483 363 7207	to	7299	505 096 0662	to	0699	609 884 2981	to	2999
463 176 4115	to	4199	483 402 2356	to	2399	505 893 7739	to	7799	609 893 1000	to	1099
463 176 4229	to	4299	483 486 5100	to	5199	505 893 7800	to	7999	610 092 3200 to 3299		
463 185 2600	to	2799	483 632 1521	to	1599	506 124 0800	to	0999	610 582 4200	to	4299
463 227 7711	to	7799	483 632 2600	to	2799	506 165 7027	to	0099	611 879 6939	to	6999
463 414 4869	to	4899	483 849 1615	to	1699	506 502 5209	to	5299	612 291 8013	to	8099
463 808 3484	to	3499	484 174 4803	to	5299	506 756 1682	to	1699	612 751 5171	to	5199
463 945 7400	to	7899	484 323 8900	to	9199	506 756 1700	to	1799	612 751 5226	to	5299
464 629 9000	to	9399	484 680 5000	to	5038	506 756 1800	to	1899	612 751 6083	to	6099
464 711 4332	to	4399	484 680 5040	to	5074	506 836 5326	to	5399	612 751 6268	to	6299
465 692 3963	to	3999	484 680 5077	to	5099	508 488 6226	to	6299	612 751 6572	to	6599
465 698 8300	to	8599	485 029 4913	to	4999	508 789 8332	to	8399	612 774 2111	to	2199
465 743 7745	to	7799	486 176 0600	to	0699	508 789 8400	to	8499	612 774 2254	to	2299
466 798 6056	to	6067	486 559 7555	to	7599	509 909 0425	to	0435	612 774 2500	to	2599
467 147 4300	to	4399	486 696 3023	to	3199	510 150 2400 to 2499			614 469 0979	to	0999
468 079 5782	to	5799	488 173 7900	to	7999	510 381 3200	to	3299	614 474 3000	to	3099
469 067 2817	to	2899	488 206 4100	to	4199	510 587 9500	to	9599	614 521 3490	to	3499
469 127 8000	to	8199	488 226 0200	to	0299	510 587 9659	to	9699	614 645 1800	to	1899
469 213 0359	to	0399	488 709 3906	to	3999	510 269 9770	to	9999	614 832 1100	to	2099
469 213 0500	to	0599	488 855 8359	to	8399	511 021 5042	to	5099	615 017 7505	to	7599
469 561 8011	to	8099	489 181 8963	to	8999	511 021 5100	to	5199	617 711 6609	to	6699
469 658 1961	to	1999	489 223 2000	to	2099	511 468 1747	to	1799	617 760 5266	to	5299
469 666 9900	to	9999	489 311 1930	to	1999	511 844 0100	to	0199	617 813 3601	to	3699
469 678 1900	to	1999	489 318 6200	to	6300	511 844 0340	to	0399	618 840 9200	to	9299
469 781 4900	to	4999	489 384 0027	to	0099	512 805 3913	to	3919	619 551 7229	to	7299
469 947 6960	to	6999	489 427 0658	to	0899	513 046 0700	to	0726	619 859 3000	to	3099
470 755 5800 to 5818			489 997 5252	to	5299	513 149 0600	to	0699	620 073 9400 to 9499		
471 918 0300	to	0999	490 669 5850 to 6099			513 445 3000	to	3199	621 614 7907	to	7930
471 985 2408	to	2419	490 717 7080	to	7099	513 466 2034	to	2044	621 614 7932	to	7999
472 191 6700	to	6799	490 721 6000	to	6099	513 539 9052	to	9099	621 648 8021	to	8199
472 270 2555	to	2599	490 793 1500	to	2099	513 539 9267	to	9299	621 648 8500	to	8599
472 987 0213	to	0241	490 886 8171	to	8199	513 539 9800	to	9899	621 904 8351	to	8599
472 987 0290	to	0299	490 977 9221	to	9240	513 539 9985	to	9999	621 916 1978	to	1989
473 151 2069	to	2199	491 258 8100	to	9099	513 606 5459	to	5490	622 989 8032	to	8099
473 666 9138	to	9199	491 567 1376	to	1399	513 812 1751	to	1799	623 076 9300	to	9399
473 952 3429	to	3499	492 254 4800	to	4899	514 103 3600	to	3699	623 819 5006	to	5099
474 108 5402	to	5499	492 283 5100	to	5199	514 103 3700	to	3799	623 895 8200	to	8399
474 356 5193	to	5299	492 610 6813	to	6899	514 103 3800	to	3899	623 917 0000	to	0099
474 949 3366	to	3399	493 394 5568	to	5599	600 645 3223 to 3299			623 917 0200	to	0299
475 134 9362	to	9399	493 470 2562	to	2599	601 339 1200	to	1399	624 468 5288	to	5299
475 167 9667	to	9699	493 473 7700	to	7799	601 653 5884	to	5899	624 665 3162	to	3198
475 319 3415	to	3499	493 716 2153	to	2199	601 661 7700	to	7799	625 088 6735	to	6799
475 319 3649	to	3799	494 206 2972	to	2999	601 682 5343	to	5399	625 916 9500	to	9799
475 340 6400	to	6599	494 217 3446	to	3999	601 928 1600	to	1699	625 968 8956	to	8999
475 424 8410	to	8499	494 224 0500	to	0599	602 512 2972	to	2999	627 005 3938	to	3999
475 629 9156	to	9199	495 145 0600	to	0699	602 555 2400	to	2799	627 384 3907	to	4099
475 850 6101	to	6199	496 209 7425	to	7499	602 829 7061	to	7099	627 496 7549	to	7599
475 875 2500	to	2599	496 213 8728	to	8799	603 483 9572	to	9599	627 708 3605	to	3699
476 169 8264	to	8299	496 474 5226	to	5248	603 490 7200	to	7299	627 776 2500	to	2599
476 189 3000	to	3499	497 053 8517	to	8699	603 678 7100	to	7199	628 226 3100	to	3199
476 331 2480	to	2499	497 854 8673	to	8699	603 678 7662	to	7699	628 814 4702	to	4799
477 289 8601	to	8699	498 449 8888	to	8899	603 678 7902	to	7999	628 851 9689	to	9699
477 681 5206	to	5299	498 929 8285	to	8499	603 678 8418	to	8499	629 510 7200	to	7299
478 010 4243	to	4268	498 936 5310	to	5399	603 678 8700	to	9999	629 964 4200	to	4294
478 010 4270	to	4291	499 016 5425	to	5499	604 086 0880	to	0899	630 389 3056 to 3071		
478 450 5071	to	5099	499 440 8575	to	8899	604 349 1414	to	1499	630 463 0588	to	0599
478 469 7838	to	7858	499 731 6717	to	6799	604 503 7776	to	7799	631 459 9117	to	9199
478 469 7883	to	7899	500 064 1858 to 1869			605 520 9037	to	9099	631 762 9325	to	9399
479 280 9800	to	9899	500 070 5725	to	7799	605 685 4010	to	4099	632 217 4933	to	4999
479 365 9116	to	9176	501 058 0016	to	0026	605 988 6467	to	6499	632 500 0000	to	640 3999
479 412 9900	to	9999	501 331 0300	to	0399	607 689 7951	to	7960	633 110 4165	to	4199
479 667 6190	to	6199	501 460 0977	to	0999	607 728 1276	to	1299	633 110 4303	to	4499
479 748 9680	to	9699	502 227 7645	to	7699	608 727 7100	to	7199	633 438 6429	to	6599
479 860 7000	to	7199	502 424 0200	to	0499	608 727 7273	to	7599	633 588 7173	to	7182
480 526 2000 to 2099			502 424 0600	to	0699	608 813 9950	to	9999	634 725 0700	to	0799
480 640 6330	to	6399	502 496 6923	to	6999	609 067 5325	to	5399	634 803 3239	to	3299
480 658 0568	to	0599	503 003 2700	to	2899	609 067 5488	to	5499	634 807 2474	to	2499
480 689 5100	to	5199	503 194 5144	to	5153	609 067 5600	to	5699	634 827 5900	to	5999
481 072 9463	to	9499	503 790 9922	to	9948	609 289 6123	to	6199	634 886 3428	to	3499

635 559 3449	to 3499	650 736 2043	to 2099	682 956 6490	to 6599	701 695 4148	to 4199
636 289 6214	to 6299	650 739 1540	to 1699	682 956 6700	to 6799	701 695 4227	to 4299
636 634 8007	to 8042	651 741 4415	to 4499	682 965 1178	to 1199	701 708 1741	to 1799
637 150 1200	to 1299	651 882 2800	to 2899	682 965 1201	to 1299	701 736 3966	to 3999
637 562 5828	to 5899	652 754 6317	to 6399	683 118 2389	to 2399	701 772 0870	to 0899
638 042 1647	to 1699	653 131 4945	to 4999	683 378 2000	to 2099	701 838 2800	to 2899
638 049 4984	to 4999	653 426 3300	to 3399	683 378 2117	to 2299	701 941 0600	to 0699
638 318 1115	to 1199	653 455 4874	to 4899	683 415 1200	to 1499	702 171 1603	to 1699
638 318 1453	to 1499	654 238 0000	to 0399	683 444 8159	to 8199	702 195 5109	to 5199
638 885 0000	to 0299	654 404 3065	to 3092	685 154 7780	to 7789	702 254 9300	to 9399
638 903 4362	to 4373	654 962 2900	to 3199	685 297 7645	to 7699	702 264 7569	to 7599
639 415 1929	to 1999	655 103 5081	to 5199	685 623 5264	to 5299	702 519 0513	to 0524
639 415 2019	to 2099	655 523 2600	to 2999	685 650 9487	to 9499	702 713 1800	to 1809
639 420 6200	to 6299	656 305 2448	to 2499	685 669 4200	to 4299	702 821 5730	to 5799
639 469 3517	to 3799	657 347 4438	to 4999	685 757 8452	to 8499	702 821 5805	to 5899
639 605 2143	to 2199	657 710 8100	to 8999	686 071 2694	to 2799	702 844 6975	to 6994
639 657 8600	to 8799	657 780 0985	to 0999	686 176 3333	to 3354	702 846 6331	to 6399
640 289 7500 to 7599		658 586 1400	to 1499	686 372 3200	to 3299	702 848 3900	to 3999
640 289 7700	to 7999	658 877 8000	to 8199	686 644 5879	to 5899	702 857 7302	to 7499
641 170 4420	to 4499	658 880 8000	to 8199	686 899 1371	to 1399	702 878 0114	to 0199
641 318 3133	to 3199	659 398 7300	to 7399	686 931 7636	to 7699	703 364 1707	to 1799
641 378 6500	to 6999	659 706 8113	to 8199	687 601 0973	to 0999	740 002 7710 to 7719	
641 383 8739	to 8799	659 846 7837	to 7899	687 614 6774	to 6799	740 037 6730	to 6800
641 877 3187	to 3299	660 510 4100 to 4199		688 120 9000	to 9999	740 119 2275	to 2284
641 877 3310	to 3399	660 673 0400	to 0599	688 314 3107	to 3191	740 130 6688	to 6698
642 355 8094	to 8199	661 488 5000	to 5099	690 291 1361 to 1371		740 144 2780	to 2795
642 355 8308	to 8999	661 609 9100	to 9199	690 788 2877	to 2899	740 241 9049	to 9099
642 900 0018	to 0099	661 716 9420	to 9499	690 893 5344	to 5399	740 252 9265	to 9294
643 030 6254	to 6299	661 906 6522	to 6599	690 893 5512	to 5599	740 255 1718	to 1799
644 066 0882	to 0899	662 021 8332	to 8399	690 904 1300	to 1599	740 274 2602	to 2619
644 069 0600	to 0699	662 068 0700	to 0899	690 941 6000	to 6199	740 277 0366	to 0392
644 077 7506	to 7699	662 553 0774	to 0799	691 313 6383	to 6399	740 332 7658	to 7671
644 085 8157	to 8199	663 078 7034	to 7099	691 313 6600	to 6699	740 348 6641	to 6658
644 112 9839	to 9899	663 763 5300	to 5399	691 582 8003	to 8099	740 351 4790	to 4799
644 373 9083	to 9099	663 883 7039	to 7499	691 664 1800	to 1999	740 374 7416	to 7499
644 380 1460	to 1499	663 938 9200	to 9299	691 664 2400	to 2499	740 470 2420	to 2443
644 733 4715	to 4799	664 253 8000	to 8499	692 727 9362	to 9399	740 514 0300	to 0499
644 900 9712	to 9799	664 656 3055	to 3099	692 798 1800	to 1899	740 523 7432	to 7449
644 901 0109	to 1299	665 174 6400	to 6499	693 249 0779	to 0799	740 535 1555	to 1580
644 901 1325	to 1399	665 274 8208	to 8299	693 249 0877	to 1699	740 557 3570	to 3579
644 923 6800	to 7799	665 669 5400	to 5499	693 445 0566	to 0999	740 650 4104	to 4140
644 932 4655	to 4699	666 132 8226	to 8299	693 448 8500	to 8999	740 684 0620	to 0800
645 318 7240	to 7499	666 696 2209	to 2299	693 645 9583	to 9599	740 701 6105	to 6114
645 333 1766	to 1799	666 696 2309	to 2399	693 965 4200	to 4299	740 705 9790	to 9799
645 790 8632	to 8699	667 032 9300	to 9399	695 741 2906	to 2999	740 726 6400	to 6500
645 821 0657	to 0699	667 729 5529	to 5599	695 947 8518	to 8599	740 748 8319	to 8329
645 930 7948	to 7999	668 383 8400	to 8699	696 662 8247	to 8299	740 765 3306	to 3399
645 975 0737	to 0762	670 368 3400 to 3499		697 447 8285	to 8296	740 774 8434	to 8499
646 242 6200	to 6299	670 369 7336	to 7399	698 042 4816	to 4899	740 779 4259	to 4299
646 270 7639	to 7799	670 750 7169	to 7199	698 131 2138	to 2157	740 786 1885	to 1899
646 798 4000	to 4999	671 046 6200	to 6399	698 227 0000	to 0099	740 790 5989	to 5999
647 048 7035	to 7099	671 251 5448	to 5499	700 065 2570 to 2599		740 803 4870	to 4879
647 049 2900	to 2999	671 926 5600	to 5799	700 065 4800	to 4899	740 820 4854	to 7836
647 398 8300	to 8399	672 444 2000	to 2999	700 190 3350	to 3359	740 827 7578	to 7594
647 398 8481	to 8499	672 828 3410	to 3499	700 228 6048	to 6099	740 917 7490	to 7499
647 437 3000	to 4999	673 167 5776	to 5799	700 650 0452	to 0499	740 918 5531	to 5549
647 811 2188	to 2199	675 464 3700	to 3799	700 666 1323	to 1349	741 037 8528	to 8551
648 009 6057	to 6099	675 464 4000	to 4199	700 786 9106	to 9142	742 030 6135	to 6149
648 163 5300	to 5499	676 365 5958	to 5999	700 859 0744	to 0758	742 033 2663	to 2674
648 722 5283	to 5299	676 669 1024	to 1099	701 028 6780	to 6899	742 040 3300	to 3309
648 892 3164	to 3199	677 126 6734	to 6799	701 213 3900	to 3999	742 112 8155	to 8199
649 100 3989	to 3999	677 333 9979	to 9999	701 267 2000	to 3999	742 151 5000	to 5014
649 647 0370	to 0399	677 466 1088	to 1099	701 335 7312	to 7399	742 191 4640	to 4649
649 647 0522	to 0599	678 071 4500	to 4799	701 369 2005	to 2050	742 192 5210	to 5224
649 647 5237	to 5399	678 096 7531	to 7599	701 499 2260	to 2299	742 222 9200	to 9210
649 647 9100	to 9299	679 909 2578	to 2599	701 503 2247	to 2299	742 228 9660	to 9669
649 666 7800	to 8299	680 112 9565 to 9599		701 541 2271	to 2299	742 247 6980	to 6989
650 114 7707 to 7719		680 244 0903	to 0999	701 553 6557	to 6599	742 290 0936	to 0950
650 130 3400	to 3599	680 412 6046	to 6099	701 578 7460	to 7469	742 302 7600	to 7699
650 213 0406	to 0499	680 761 6800	to 6899	701 578 7475	to 7499	742 305 3711	to 3799
650 555 1749	to 1799	681 677 0540	to 0699	701 601 3457	to 3499	742 305 3800	to 3899
650 564 1900	to 1999	682 070 1029	to 1099	701 605 5913	to 5999	742 305 3900	to 3999
650 627 4212	to 4299	682 956 6280	to 6299	701 695 3982	to 3999	742 305 4000	to 4099

742 305 4100	to	4199	854 304 4089	to	4999	901 291 2789	to	2799	917 370 6300	to	6499
805 885 8411	to	8499	854 529 2200	to	2299	901 525 7122	to	7199	917 486 4900	to	4999
806 087 1100	to	1499	854 532 0000	to	2999	902 089 1253	to	1299	918 460 0602	to	0699
806 268 9275	to	9299	855 001 6204	to	6249	902 198 9769	to	9799	918 951 7231	to	7299
806 534 3400	to	3477	855 319 9364	to	9399	902 948 1269	to	1299	919 519 2786	to	2799
807 342 3283	to	3399	855 361 3390	to	3399	902 985 0833	to	0899	919 536 0770	to	0799
808 086 7100	to	7199	856 226 0490	to	0499	903 370 6934	to	6999	919 814 3095	to	3199
808 090 3440	to	3499	856 656 5800	to	5999	904 600 6523	to	6599	919 889 5110	to	5134
808 325 5161	to	5699	856 752 0200	to	0299	904 892 0378	to	0399	919 889 5137	to	5176
808 784 8000	to	8299	857 111 1352	to	1399	904 892 0648	to	1299	919 889 5178	to	5199
830 125 0672	to	0699	857 279 3450	to	3499	905 056 2216	to	2299	919 889 5030	to	5070
830 602 5800	to	5999	857 843 4000	to	4099	905 510 6647	to	6799	919 889 5090	to	5099
830 610 3700	to	3799	858 124 7644	to	7699	905 510 6900	to	7099	919 915 2774	to	2787
830 983 3500	to	3599	858 756 3111	to	3299	905 794 0000	to	0199	920 155 4662	to	4687
830 983 3635	to	3699	859 063 8200	to	8699	905 794 0288	to	0299	920 309 9039	to	9199
831 354 1387	to	1399	859 190 0600	to	0644	905 873 6900	to	6999	920 771 5321	to	5399
831 815 8240	to	8299	859 437 5538	to	5599	905 873 7100	to	7299	920 857 5500	to	5899
832 525 3810	to	3899	859 811 2888	to	2899	905 880 8900	to	8999	920 864 3480	to	3499
833 159 1884	to	1899	859 855 8873	to	8999	905 889 7100	to	7199	920 963 4567	to	4599
833 456 2567	to	2599	860 240 8520	to	8599	906 158 1508	to	1599	921 333 7400	to	7499
833 566 3015	to	3071	860 275 3900	to	3999	906 558 8812	to	8899	921 477 3762	to	3799
834 130 5200	to	5299	860 518 9629	to	9699	906 982 2214	to	2299	922 278 1048	to	1399
834 316 5444	to	5499	860 600 0021	to	0099	907 725 8500	to	8599	922 280 2019	to	2099
834 354 8747	to	8766	861 158 2350	to	2599	907 815 0216	to	0257	922 280 2233	to	2299
834 354 8824	to	8838	861 367 5400	to	5499	908 622 4225	to	4235	922 773 0459	to	0499
835 269 5700	to	5799	861 637 6010	to	6099	908 936 9254	to	9299	923 032 7000	to	7399
835 496 7303	to	7399	861 979 7292	to	7499	909 066 4494	to	7499	923 045 3630	to	3699
835 539 5200	to	5999	862 216 6100	to	6199	909 067 7400	to	7499	923 484 3600	to	3699
835 813 3015	to	3099	862 263 9213	to	9299	909 100 1787	to	1799	923 493 9403	to	9599
837 672 8967	to	8999	862 271 0800	to	0999	909 100 1900	to	2099	923 493 9681	to	9699
837 784 3282	to	3299	862 271 5000	to	5099	909 355 0422	to	0499	923 604 4424	to	4499
838 176 8377	to	8399	863 871 5138	to	5199	909 568 8900	to	9099	923 810 7800	to	8299
838 518 1257	to	1299	863 949 5300	to	5399	909 568 9300	to	9499	924 252 1200	to	1299
839 718 8257	to	8299	864 088 8200	to	8299	909 725 7307	to	7399	924 252 1400	to	1499
840 323 0600	to	0699	864 426 3972	to	3999	909 833 0947	to	0999	924 533 0711	to	0799
840 875 6235	to	6299	864 520 6117	to	6136	910 219 8631	to	8699	924 533 2343	to	2399
840 910 0900	to	0999	865 151 0526	to	0599	910 265 1100	to	1199	924 533 2428	to	2499
841 349 5000	to	5099	865 500 4034	to	4099	910 471 7273	to	7299	924 685 1957	to	1999
841 805 7747	to	7899	865 883 6082	to	6099	910 536 2505	to	2599	924 946 6300	to	6699
841 805 7944	to	8099	866 004 3000	to	3999	910 958 7499	to	7599	925 333 5900	to	6099
842 226 0685	to	0695	866 442 4100	to	4899	911 140 1000	to	2199	925 336 2300	to	2399
842 685 4600	to	4699	867 366 9108	to	9118	911 245 2545	to	2599	926 432 5907	to	5999
842 685 4742	to	4999	867 633 7403	to	7499	911 268 9077	to	9099	926 436 3600	to	3699
842 860 0300	to	0399	867 737 5623	to	5699	911 400 8948	to	8999	927 765 6257	to	6299
842 898 5582	to	5599	868 169 4529	to	4599	911 508 1620	to	1799	928 197 8100	to	8199
843 062 7100	to	7199	868 173 8400	to	8599	911 509 9310	to	9399	928 197 8283	to	8299
843 077 6288	to	6299	868 514 9000	to	9099	911 523 3000	to	3999	928 856 2059	to	2068
843 077 6378	to	6399	868 566 9200	to	9299	912 057 9922	to	9999	930 078 5800	to	5899
843 758 5769	to	5778	869 200 0000	to	9999	912 882 0563	to	0899	930 219 1722	to	1799
843 786 2554	to	2699	869 387 1150	to	1199	913 605 2218	to	2299	930 335 7810	to	7819
845 656 8165	to	8199	869 505 3500	to	3599	913 709 2429	to	2499	931 097 9259	to	9299
845 727 2100	to	2199	869 523 7033	to	7099	913 818 3501	to	3999	931 156 1502	to	1579
845 746 2618	to	2635	869 566 6150	to	6167	914 063 4300	to	4399	931 156 1600	to	1625
846 390 7531	to	7599	869 800 0000	to	999 9999	914 346 7621	to	7644	931 156 1671	to	1699
846 918 0572	to	0599	870 054 4814	to	4899	914 453 1366	to	1399	932 506 6400	to	6599
847 237 7690	to	7699	870 491 4812	to	4849	914 529 6185	to	6299	932 732 1796	to	1799
847 284 2481	to	2499	870 536 5820	to	5829	914 896 4658	to	4699	932 827 9026	to	9099
847 374 7055	to	7065	870 541 7167	to	7239	915 187 8774	to	8779	932 957 2300	to	2399
847 374 7055	to	7065	870 575 8155	to	8999	915 300 2783	to	2799	933 060 6160	to	6189
847 636 5304	to	5399	870 589 0485	to	0494	915 546 6822	to	6999	933 387 2541	to	2561
847 700 5447	to	5499	870 691 7060	to	7099	915 646 5183	to	5199	933 760 3609	to	4199
847 723 7500	to	7599	872 028 4850	to	4899	915 671 3963	to	3980	933 894 0928	to	0999
849 485 3427	to	3499	872 029 9306	to	9399	915 671 3982	to	3999	934 018 2729	to	2741
849 520 9850	to	9899	872 078 3709	to	3799	915 675 2217	to	2299	934 180 0300	to	0399
849 608 1357	to	1399	872 100 0445	to	0459	916 440 3377	to	3399	934 236 3954	to	3999
849 792 2600	to	2699	900 556 4178	to	4199	916 670 6352	to	6399	934 622 8717	to	8999
850 546 1862	to	1899	900 845 0044	to	0099	916 682 5300	to	5399	935 216 0312	to	0399
851 143 6826	to	6844	900 936 0217	to	0299	916 694 1414	to	1499	935 843 2202	to	2247
851 209 9880	to	9899	900 936 0435	to	0499	916 703 0802	to	0821	936 024 8889	to	8899
851 928 9221	to	9299	901 058 5255	to	5280	917 089 0709	to	0799	936 339 4455	to	4499
852 589 6560	to	6599	901 273 1082	to	1099	917 089 0842	to	0899			
853 049 3646	to	3699	901 287 5143	to	5199	917 216 2928	to	2999			

Missing, Lost, or Stolen Canadian Money Order Forms

Do Not Cash — Upon Receipt, Notify Local Postal Inspectors

Provide this listing to all Postal Service™ employees responsible for accepting and cashing postal money orders. Destroy all interim notices when the numbers listed appear in the *Postal Bulletin*. The new money order serial

numbers consist of the first 9 digits. The tenth digit is a check digit only.

Do not cash outdated money orders **104 151 601 to 692 600 000**. Advise holders to send invalid money orders to Canada Post Corporation, Ottawa, Canada K1A 0B1. Check for altered dollar amounts by holding money orders to the light.

719 869 731	to	9 760	728 702 338	to	2 400	734 950 111	to	0 170	742 325 668	to	5 700
720 227 871	to	7 930	728 915 371	to	5 850	735 120 331	to	0 840	742 408 771	to	8 830
720 227 949	to	7 960	728 953 141	to	3 410	735 283 008	to	3 020	742 512 120	to	2 150
720 368 543	to	8 570	728 954 280	to	4 310	735 293 131	to	3 220	742 684 849	to	4 890
720 392 151	to	2 570	729 169 081	to	9 140	735 635 010	to	5 040	742 839 553	to	9 630
720 556 491	to	6 640	729 363 841	to	3 870	735 783 961	to	3 990	742 913 668	to	3 700
720 558 621	to	8 650	729 682 891	to	3 190	735 803 401	to	3 430	742 917 287	to	7 296
720 575 361	to	5 570	729 838 940	to	9 070	736 005 420	to	5 440	742 921 891	to	1 980
720 590 152	to	0 179	729 839 101	to	9 130	736 366 021	to	6 110	742 983 631	to	3 810
721 638 331	to	9 170	730 077 683	to	7 840	736 624 456	to	4 500	743 020 021	to	0 170
721 815 391	to	5 420	730 109 847	to	9 880	736 670 851	to	1 060	743 206 491	to	6 500
721 969 713	to	9 740	730 373 761	to	3 850	736 767 061	to	7 090	743 235 992	to	6 050
722 072 137	to	2 160	730 501 951	to	2 130	736 767 093	to	7 120	743 940 631	to	0 900
722 378 265	to	8 280	730 519 379	to	9 470	736 982 191	to	2 370	743 978 011	to	8 070
722 413 990	to	4 004	730 569 278	to	9 360	736 982 551	to	2 730	744 234 751	to	4 780
722 764 948	to	4 980	730 711 711	to	1 740	737 110 141	to	0 170	744 499 591	to	9 680
722 825 840	to	5 889	730 722 991	to	3 230	737 185 501	to	5 710	744 626 901	to	6 910
723 153 841	to	3 850	730 845 970	to	5 990	737 317 321	to	7 350	745 388 794	to	8 910
723 237 616	to	7 630	730 888 291	to	8 320	737 517 781	to	7 840	746 446 806	to	6 820
723 331 081	to	1 110	730 927 591	to	7 680	737 628 181	to	8 210	746 818 351	to	8 410
723 496 443	to	6 470	731 307 914	to	7 930	737 634 258	to	4 270	747 245 266	to	5 280
723 967 291	to	7 320	731 402 431	to	2 460	738 361 971	to	1 980	747 364 813	to	4 830
724 655 196	to	5 340	731 407 232	to	7 320	738 447 601	to	7 660	747 501 434	to	1 450
724 711 441	to	1 500	731 588 301	to	8 340	738 648 355	to	8 450	747 739 891	to	0 070
724 711 538	to	1 560	731 767 273	to	7 320	738 849 811	to	9 900	748 148 649	to	8 760
724 793 221	to	3 250	731 781 061	to	1 120	738 892 270	to	2 290	748 259 960	to	9 970
724 908 109	to	8 120	731 837 821	to	7 910	738 997 259	to	7 380	748 565 162	to	5 280
724 937 461	to	7 670	731 841 377	to	1 450	739 161 451	to	1 540	748 874 988	to	5 030
725 163 118	to	3 151	732 018 481	to	8 600	739 219 381	to	9 440	749 137 381	to	7 410
725 202 735	to	2 750	732 067 972	to	8 370	739 740 151	to	0 180	749 190 192	to	0 210
725 398 591	to	8 800	732 188 649	to	8 670	739 793 491	to	3 520	749 685 421	to	5 450
725 464 591	to	4 920	732 193 460	to	3 470	739 793 527	to	3 550	749 846 791	to	6 850
725 475 321	to	5 330	732 201 241	to	1 390	739 942 621	to	2 650	749 993 131	to	3 580
725 711 057	to	1 070	732 220 431	to	0 440	739 999 231	to	9 320	750 071 587	to	1 610
725 738 581	to	8 730	732 355 201	to	5 380	740 011 517	to	1 530	750 408 167	to	8 183
725 981 311	to	1 430	732 472 320	to	2 560	740 030 701	to	0 970	750 438 421	to	8 501
725 987 835	to	7 880	732 541 605	to	1 620	740 261 740	to	1 820	750 743 911	to	4 030
726 060 811	to	0 900	732 572 221	to	2 490	740 265 811	to	6 290	750 779 118	to	9 400
726 391 970	to	2 520	732 586 479	to	6 710	740 299 111	to	9 170	750 910 981	to	1 010
726 484 771	to	4 800	732 994 037	to	4 080	740 299 231	to	9 260	750 960 841	to	0 900
726 493 351	to	5 300	733 163 449	to	3 460	740 329 266	to	9 320	751 296 211	to	6 240
726 504 031	to	4 063	733 297 171	to	7 290	740 889 081	to	9 090	751 539 121	to	9 180
726 504 070	to	4 090	733 446 631	to	7 110	741 010 421	to	0 530	751 541 311	to	1 790
726 504 331	to	4 390	733 474 665	to	4 770	741 113 041	to	3 370	751 757 641	to	7 700
726 563 701	to	4 060	733 704 482	to	4 570	741 373 891	to	4 340	751 936 951	to	7 010
726 599 371	to	9 460	733 751 041	to	1 130	741 452 369	to	2 490	751 951 861	to	1 890
726 626 356	to	6 370	734 009 101	to	9 130	741 492 991	to	3 140	751 999 021	to	9 110
727 182 271	to	2 510	734 290 759	to	0 770	741 553 460	to	3 470	752 139 516	to	9 570
727 416 181	to	6 240	734 389 273	to	9 290	741 764 431	to	4 520	752 182 892	to	2 950
727 481 431	to	1 460	734 440 031	to	0 111	741 764 431	to	4 520	752 206 861	to	7 100
727 749 241	to	9 780	734 797 201	to	7 320	742 178 834	to	8 880	752 295 241	to	5 600
728 382 331	to	2 480	734 939 611	to	9 640	742 325 500	to	5 520	752 731 351	to	1 410

752 767 441	to	7 470	762 593 431	to	3 460	773 208 991	to	9 290	800 427 530	to	7 540
753 008 941	to	9 030	763 155 160	to	5 180	773 231 311	to	1 340	800 872 741	to	2 830
753 194 311	to	4 370	763 178 631	to	8 660	773 348 739	to	8 940	801 349 801	to	9 830
753 620 378	to	0 400	763 506 001	to	6 060	773 348 739	to	8 940	801 676 681	to	7 100
754 013 917	to	3 940	763 522 141	to	2 470	773 575 891	to	5 950	802 967 821	to	7 940
754 161 061	to	1 120	763 717 694	to	7 800	773 852 971	to	3 030	803 217 601	to	7 780
754 358 445	to	8 610	763 826 461	to	6 520	775 373 449	to	3 460	803 729 731	to	9 850
754 410 451	to	0 660	763 900 460	to	0 471	789 257 191	to	7 250	803 747 402	to	7 520
754 438 393	to	8 410	763 900 479	to	0 530	790 448 020	to	8 460	804 138 181	to	8 420
754 493 109	to	3 130	763 917 271	to	7 750	790 597 485	to	7 530	804 428 224	to	8 250
754 664 182	to	4 220	764 125 801	to	5 860	790 911 883	to	1 900	804 682 411	to	2 710
754 816 377	to	6 470	764 284 525	to	4 560	791 057 441	to	7 550	805 272 525	to	2 540
755 487 421	to	7 600	764 526 241	to	6 330	791 239 081	to	9 290	805 523 445	to	3 460
755 592 901	to	3 140	764 601 421	to	1 600	791 374 483	to	4 500	805 745 704	to	5 730
755 790 020	to	0 030	764 650 231	to	0 470	791 387 971	to	8 030	806 452 907	to	2 980
755 791 730	to	1 800	764 984 371	to	4 850	791 447 521	to	7 850	806 744 781	to	4 850
755 926 951	to	7 070	765 003 667	to	3 680	791 451 151	to	1 240	806 982 181	to	2 300
755 934 332	to	4 510	765 042 517	to	2 540	791 500 009	to	0 470	807 764 791	to	4 910
755 957 701	to	8 000	765 194 728	to	4 970	791 771 431	to	1 490	808 089 931	to	9 960
755 962 981	to	3 280	765 387 365	to	7 450	792 004 293	to	4 320	808 656 423	to	6 450
756 035 371	to	5 490	765 541 801	to	2 100	792 018 379	to	8 420	808 753 771	to	3 800
756 301 257	to	1 290	765 638 461	to	8 970	792 070 621	to	0 740	809 189 001	to	9 010
756 371 565	to	1 580	765 647 101	to	7 190	792 145 211	to	5 230	809 886 879	to	6 930
756 876 031	to	6 120	765 813 781	to	4 029	792 391 381	to	1 620	809 890 489	to	0 500
756 876 151	to	6 240	765 879 314	to	9 390	792 452 779	to	2 790	810 323 734	to	3 760
756 970 129	to	0 140	765 954 001	to	4 030	792 772 728	to	2 770	810 367 116	to	7 140
757 059 613	to	9 630	766 120 286	to	0 320	792 903 511	to	3 990	810 526 351	to	6 500
757 078 540	to	8 560	766 125 716	to	5 750	793 282 518	to	2 533	810 806 911	to	6 940
757 086 209	to	6 240	766 158 824	to	8 840	794 041 831	to	2 040	810 807 211	to	7 240
757 240 591	to	0 650	766 388 433	to	8 460	794 397 709	to	7 780	811 423 021	to	3 110
757 277 371	to	7 700	766 509 421	to	9 660	794 581 741	to	2 040	811 517 221	to	7 239
757 291 591	to	2 730	766 572 901	to	3 020	794 592 122	to	2 150	811 721 101	to	1 130
757 964 251	to	4 280	766 748 500	to	8 521	795 032 251	to	2 340	812 025 721	to	5 900
758 067 001	to	7 090	767 024 341	to	4 370	795 796 291	to	6 350	812 093 073	to	3 130
758 105 221	to	5 250	767 326 471	to	6 590	796 070 139	to	0 160	812 100 821	to	0 840
758 324 941	to	5 000	767 332 561	to	2 950	796 143 151	to	3 630	812 465 251	to	5 610
758 593 628	to	3 650	768 009 841	to	9 960	796 159 725	to	9 740	812 918 341	to	8 670
758 709 038	to	9 060	768 011 489	to	1 520	796 169 306	to	9 340	812 918 701	to	8 760
758 744 101	to	4 160	768 177 980	to	7 990	796 373 406	to	3 430	813 050 491	to	0 520
758 850 883	to	0 900	768 391 081	to	1 170	796 602 961	to	3 050	813 073 171	to	3 200
758 860 951	to	1 550	768 661 569	to	1 650	796 708 441	to	8 500	813 398 476	to	8 550
759 152 851	to	2 880	769 000 051	to	0 080	796 886 281	to	6 430	813 713 971	to	4 000
759 740 941	to	1 090	769 050 841	to	0 900	796 901 701	to	2 000	813 858 121	to	8 150
760 004 596	to	4 610	769 159 081	to	9 178	796 975 466	to	5 590	814 789 330	to	9 349
760 118 191	to	8 250	769 737 496	to	7 510	797 272 917	to	2 950	814 984 656	to	4 680
760 155 001	to	5 090	769 778 491	to	8 730	797 519 441	to	9 460	815 016 020	to	6 030
760 378 002	to	8 020	769 827 331	to	7 450	797 519 731	to	0 240	815 199 410	to	9 420
760 692 722	to	2 749	770 216 071	to	6 100	797 535 181	to	5 330	815 240 491	to	0 520
761 055 460	to	5 480	770 723 281	to	3 400	797 646 151	to	6 180	815 755 591	to	5 620
761 169 781	to	9 810	770 790 451	to	0 480	798 040 053	to	0 080	815 755 622	to	5 650
761 504 941	to	5 120	770 915 150	to	5 490	798 055 813	to	5 830	815 806 381	to	6 680
761 516 836	to	6 910	771 455 551	to	5 610	798 055 891	to	5 950	816 126 834	to	6 870
761 613 588	to	3 600	771 609 661	to	9 690	798 326 371	to	6 520	816 156 721	to	6 780
761 688 631	to	8 690	771 932 551	to	2 580	798 339 167	to	9 210	816 580 903	to	0 920
761 805 199	to	5 240	772 057 224	to	7 440	798 562 411	to	2 440	816 945 571	to	5 600
761 826 106	to	6 120	772 162 660	to	3 070	798 632 461	to	2 490	817 253 011	to	3 280
761 881 171	to	1 560	772 718 615	to	8 640	798 807 151	to	7 510	817 763 881	to	4 060
761 975 641	to	5 670	772 940 140	to	0 160	798 944 761	to	5 030	818 330 562	to	0 610
761 975 886	to	5 895	772 970 886	to	0 940	799 118 616	to	8 640	818 459 641	to	9 670
762 304 144	to	4 170	773 009 419	to	9 430	799 133 191	to	3 220	818 926 273	to	6 320
762 324 931	to	4 960	773 112 031	to	2 060	799 177 626	to	7 650	818 950 351	to	0 380
762 439 261	to	9 290	773 125 387	to	5 410	799 854 751	to	5 200	818 962 492	to	2 530
762 524 158	to	4 220	773 179 320	to	9 410	800 044 320	to	4 410	819 032 341	to	2 730
762 584 872	to	4 970	773 202 989	to	3 140	800 211 901	to	2 440	819 127 054	to	7 080

819 278 540	to	8 670	822 703 442	to	3 470	826 226 644	to	6 670	828 539 341	to	9 370
819 544 681	to	4 740	822 900 991	to	1 020	826 582 951	to	3 430	828 732 331	to	2 390
819 928 441	to	8 650	822 925 951	to	6 100	826 720 201	to	0 230	828 807 781	to	7 840
820 034 406	to	4 430	823 284 931	to	4 990	827 005 671	to	5 830	828 830 952	to	0 963
820 070 761	to	1 540	823 293 031	to	3 210	827 287 861	to	7 950	828 939 781	to	0 050
820 191 342	to	1 360	823 556 011	to	6 100	827 291 502	to	1 520	829 002 721	to	2 870
820 274 856	to	4 880	824 078 341	to	8 370	827 575 381	to	5 470	829 005 301	to	5 540
820 600 171	to	0 230	824 156 325	to	6 340	827 609 085	to	9 100	829 080 241	to	0 330
821 172 241	to	2 360	824 511 252	to	1 270	827 619 811	to	9 840	829 160 986	to	1 000
821 229 661	to	9 720	824 588 281	to	8 370	827 883 511	to	3 600	829 176 841	to	6 930
821 229 743	to	9 780	825 140 397	to	0 460	828 160 441	to	0 530	829 471 561	to	1 590
821 903 731	to	3 910	825 409 651	to	9 680	828 376 201	to	6 260	829 561 065	to	1 080
821 927 841	to	7 850	825 472 171	to	2 200	828 441 602	to	1 630	829 566 481	to	6 510
822 505 801	to	5 830	826 042 898	to	2 920	828 539 316	to	9 340	829 569 931	to	9 960

— Criminal Investigations Group, U.S. Postal Inspection Service, 6-17-21

Verifying U.S. Postal Service Money Orders

Follow these steps to cash a Postal Service™ money order:

1. Check that the amount does not exceed the legal limit: \$1,000 for domestic, and \$700 for international Postal Service money orders.
2. Check that the proper security features are present:
 - When held to the light, a watermark of Benjamin Franklin is repeated from top to bottom on the left side.
 - When held to the light, a dark line (security thread) runs from top to bottom with the word “USPS” repeated.
 - When there is discoloration around the dollar amounts, this might indicate the amounts were changed.

These appear in Postal Service Notice 299, *U.S. Postal Money Order Reference Card*, or online at usps.com/shop/money-orders.htm.

3. If the money order seems suspicious, call the U.S. Postal Service Money Order Verification System at 866-459-7822.

Provide this information to local banks and retailers, as they also receive Postal Service money orders for cashing.

— *Delivery and Retail Customer Service Operations, 6-17-21*

Counterfeit Canadian Money Order Forms

Do Not Cash

To be posted and used by retail window employees. As directed, destroy previous notices. Destroy all interim notices when the numbers listed appear in the *Postal Bulletin*.

671,819,086	683,594,542	687,262,503
676,612,640	684,683,610	687,262,525
677,891,039	686,619,878	687,262,526
678,282,493	686,619,886	687,287,578
678,916,031	686,619,887	687,287,581
679,552,215	686,794,382	687,287,582
679,694,334	686,794,426	694,063,898
679,751,983	686,794,427	694,063,899
679,800,207	686,794,431	694,063,980
681,130,536	687,262,502	701,321,725
681,844,376		

— Criminal Investigations Group, U.S. Postal Inspection Service, 6-17-21

Toll-Free Number Available to Verify Canadian Money Orders

The Canada Post Corporation has a toll-free number that cashing agents can call to verify the validity of Canadian Postal Money Orders. The number is 800-563-0444.

This toll-free number is printed on the back of the Canadian Postal Money Orders.

— Criminal Investigations Group, U.S. Postal Inspection Service, 6-17-21

Other Information

Overseas Military/Diplomatic Mail

Mail addressed to military and diplomatic post offices overseas is subject to certain conditions or restrictions of mailing regarding content, preparation, and handling. The APO/FPO/DPO table outlines these conditions by APO/FPO/DPO ZIP Codes™ through the use of footnoted mailing restrictions codes (see the [Restrictions](#) page following the table).

Acceptance clerks must use the table with the Retail System Software terminal to determine which APO/FPO/DPO ZIP Codes are active and which conditions of mailing apply.

The entries under “Changes” appear in bold in the following APO/FPO/DPO table:

Changes

APO/FPO/DPO	Action	Effective Date	See Restrictions
APO AE 09318	Close	06/01/2021	
APO AE 09347	Close	06/03/2021	
APO AE 09355	Close	06/01/2021	
DPO AE 09490	Open	05/25/2021	A-B-C1-C2-E2-F-F1-F3-H1-J-L-M-N-R-R1-S-T-V-X-Z1
DPO AE 09491	Open	05/25/2021	A-B-C1-C2-E2-F1-F3-H1-J-L-M-N-R-R1-S-T-V-Z1

We have eliminated “Not Active” entries from the table below to save space and paper.

APO/FPO/DPO Table

APO/ FPO/ DPO	See Restrictions	APO/ FPO/ DPO	See Restrictions	APO/ FPO/ DPO	See Restrictions	APO/ FPO/ DPO	See Restrictions
09002	A-B-F-F3-H-N-Q-R-S-V-Z-Z1	09034	B-C-D-E-F3-H-M-R-S-U	09114	B-C-D-E-F3-H-M-R-S-U	09172	B-C-D-E-F3-H-M-R-S-U
09003	B-C-D-E-F3-H-M-P-R-S-U	09044	B-C-D-F1-F3-H-R-S-U	09115	A-B-F-F3-H-N-Q-R-S-V-Z-Z1	09173	B-C-D-E-F3-H-M-R-S-U
09004	B-C-D-E-F3-H-M-R-S-U	09046	B-C-D-E-F3-H-M-R-S-U	09116	A-B-F-F3-H-N-Q-R-S-V-Z-Z1	09174	B-C-C2-F-F1-F3-I3-L-N-R-R1-S-T-V-X-Z-Z1
09005	B-C-D-E-F3-H-M-P-R-S-U	09049	B-C-D-E-F3-H-M-R-S-U	09123	B-C-D-E-F3-H-M-R-S-U-Z1	09175	A-B-C1-C2-E2-F-F1-F3-H1-J-L-M-N-R-R1-S-T-V-W-X-Z1
09006	B-C-D-E-F3-H-M-R-S-U	09053	B-C-D-E-F3-H-M-R-S-U	09125	A-B-C-F-F1-F3-H-N-R-R1-S-V-V1	09176	A-B-C2-F-F1-F3-J-L-M-N-R-R1-S-T-V-X-Z1
09008	A-B-F-F3-H-N-Q-R-S-V-Z-Z1	09060	B-C-D-E-F1-F3-H-M-N-R-S-U-Z1	09126	B-C-D-F3-H-M-P-R-S-Z1	09177	B-C-D-E-F3-H-M-R-S-U
09009	B-C-D-E-F3-H-M-R-S-U-Z1	09067	B-C-D-E-F3-H-M-R-S-U	09128	B-C-D-E-F3-H-M-R-S-U	09178	B-C1-C2-E2-F1-F3-I3-L-M-N-R-S-T-V-X-Z-Z1
09010	B-C-D-E-F3-H-M-R-S-U2	09068	B-C-D-E-F3-H-R-S-U-Z1	09131	B-C-D-E-F3-H-M-R-S-U	09180	B-C-D-E-F3-H-M-R-S-U
09011	B-C-D-E-F3-H-M-R-S-U	09069	A-B-C-D-E-F3-H-N-R-S-U-V	09135	A-B-F-F3-H-N-R-S-U-V-Z1	09186	B-C-D-E-F3-H-M-P-R-S-U
09012	B-C-D-E-F3-H-M-R-S-U-Z1	09079	B-C-D-E-F3-H-M-R-S-U	09136	B-C-D-E-F1-F3-H-M-P-R-S-U	09203	A-B-C-C1-C2-F-F1-F3-I3-J-L-M-N-R-R1-T-V-Z-Z1
09013	B-C-D-E-F-F1-F3-H-M-R-S-U-Z1	09090	B-C-D-E-F3-H-M-R-S-U	09138	B-C-D-F3-H-M-R-S-U	09204	B-C-F3-M-N-R-S-V-Z1
09014	B-C-D-E-F3-H-M-P-R-S-U	09094	B-C-D-F3-H-M-P-R-S-Z1	09140	B-C-D-E-F3-H-M-R-S-U	09211	B-C-D-E-F3-H-M-P-R-S-U
09015	A-B-C-C1-C2-F-F1-F3-J-L-M-N-R-R1-S-V-Z1	09095	B-C-D-E-H-M-R-U	09142	B-C-D-E-F3-H-M-R-S-U	09213	B-C2-F-F1-F3-H-J-L-M-N-R-R1-T-U-V-Z1
09016	B-C-D-E-F1-F3-H-M-R-S-U	09096	B-C-D-E-F3-H-M-R-S-U	09154	B-C-D-E-F3-H-M-R-S-U	09214	B-C-D-E-F3-H-M-R-S-U-Z1
09017	A-B-F-F3-H-N-Q-R-S-V-Z-Z1	09103	A-B-F-F3-H-N-Q-R-S-V-Z-Z1	09160	B-C-C2-D-F-F1-F3-H-J-L-M-N-R-R1-T-U-V-Z1	09216	B,C,F1,F3,M,N,R,S,V,Z1
09018	A-B-F-F3-H-N-Q-R-S-V-Z-Z1	09104	B-C-D-F3-H-M-R-S-U-Z1	09170	A-B-C2-F-F1-F3-J-L-M-N-R-R1-S-T-V-X-Z1	09227	B-C-D-E-F3-H-M-R-S-U
09020	B-C-D-E-F3-H-M-R-S-U	09107	B-C-D-E-F3-H-M-R-S-U	09171	A-B-C1-C2-E3-F-F1-F3-J-L-M-N-R-R1-S-T-V-X-Z1		
09021	B-C-D-E-F3-H-M-R-S-U-Z1	09112	B-C-D-E-F3-H-M-R-S-U				
		09113	A-B-F-F3-H-N-Q-R-S-V-Z-Z1				

APO/ FPO/ DPO	See Restrictions	APO/ FPO/ DPO	See Restrictions	APO/ FPO/ DPO	See Restrictions	APO/ FPO/ DPO	See Restrictions
09240	A-B-C1-F-F3-H-N-R-S-V	09312	A-B-C1-C2-E2-F-F1-F3-H1-I3-L-M-N-R-R1-S-T-U-U4-V-Z-Z1	09463	B-C-C1-F3-M-R-S-U-Z1	09544	A-B-C-F-F3-M-N-S-V-Z1
09241	A-B-F3-N-R-S-U-Z1			09464	B-C-C1-F3-R-S-U-Z1	09545	A-B-C-F-F3-M-N-S-V-Z1
09242	A-B-C1-F-F3-H-N-R-S-V	09313	A-B-C-C1-E2-F-F1-F2-F3-H1-R-R1-S-V-Z1	09467	B-E-E1-F-F3-J-L-M-N-R-S-T-V-X-Z1	09550	B-F-F1-R-R1-V
09250	B-C-D-E-F3-H-M-R-S-U	09315	A-B-C1-E2-F-F3-N-R-R1-S-V-Z1	09468	B-C-C1-F3-M-R-S-U-Z1	09554	B-F-F1-R-R1-V
09261	B-C-D-E-F3-H-M-N-R-S-U-V-Z1	09316	A-B-C1-E2-F-F1-F3-H1-I3-M-N-R-R1-S-T-V-Z-Z1	09469	B-C-C1-F3-R-S-U-Z1	09556	B-F-F1-R-R1-V
09263	B-C-D-E-F3-H-M-R-S-U			09470	B-C-C1-F3-M-R-S-U-Z1	09564	B-F-F1-R-R1-V
09264	B-C-E-F3-H-M-R-S-U	09319	A-B-C-C1-C2-E2-F-F1-F2-F3-H1-R-R1-S-U2-V-Z1	09487	A-B-C-C1-C2-E2-F1-F3-I3-L-M-N-R-R1-S-T-V-W-X-Z-Z1	09565	B-F-F1-F3-R-R1-S-V
09265	B-C-D-F-F1-H-J-L-M-N-R-S-T-U-V-Z1	09320	A-B-C1-E2-F-F3-H1-M-N-R-R1-S-V-Z1	09488	A-B-C-C1-C2-E2-F3-J-L-M-N-S-T-V-W-X-Z1	09566	B-C2-E2-E3-F-F1-F3-R-R1-S-V-Z1
09266	A-B-F3-R-S-U-V-Z1	09321	A-B-C1-C2-E2-F-F3-H1-M-N-R-R1-S-V-Z1	09489	A-B-C-C1-C2-E2-F1-F3-L-M-N-R-R1-S-T-V-W-X-Z1	09567	B-C2-E2-E3-F-F1-F3-R-R1-V-Z1
09276	A-B-F-F3-I3-L-M-N-R-S-T-V-X-Z-Z1	09330	A-B-C1-C2-D-E-E2-F-F1-F3-H-H1-M-R-R1-S-V-Z1	09490	A-B-C1-C2-E2-F-F1-F3-H1-J-L-M-N-R-R1-S-T-V-X-Z1	09568	B-V
09277	A-B-E-E1-E2-F1-F3-I3-L-N-R-S-T-V-X-Z-Z1	09333	A-B-C-C1-E2-F-F1-F3-H1-I3-M-N-R-R1-S-V-V1-Z-Z1	09491	A-B-C1-C2-E2-F1-F3-H1-J-L-M-N-R-R1-S-T-V-Z1	09569	B-C2-E2-E3-F-F1-F3-R-R1-V-Z1
09278	A-B-F-F3-I3-L-M-N-R-S-T-V-X-Z-Z1	09343	A-B-C1-F-F3-M-N-R-R1-S-V-Z1	09494	B-C-C1-F3-M-R-S-U-Z1	09570	A-B-F-F1-F3-R-R1-S-V
09279	A-B-E-E1-F-F3-I3-L-M-N-R-S-T-V-X-Z-Z1	09348	A-B-C1-E2-F-F1-F3-H1-I3-M-N-R-R1-S-T-V-Z-Z1	09498	B-C1-C2-F-F1-F3-J-L-N-R-R1-T-V-Z1	09573	B-C2-E2-E3-F-F1-F3-R-R1-S-V-Z1
09283	A-B-E-E1-F-F3-L-M-N-R-S-T-V-X-Z1	09352	A-B-C1-E2-F-F3-H1-M-R-R1-S-V-Z1	09501	B-V	09574	B-F-F1-R-R1-V
09285	A-B-C-E-E-1-F1-F3-H-I3-L-M-N-R-S-T-V-X-Z-Z1	09354	A-B-C1-E2-F-F3-H1-M-R-R1-S-V-Z1	09502	B-V	09575	B-F-F1-R-R1-V
09287	B-C2-E1-F1-F3-J-L-N-R-S-T-V-X-Z1	09356	A-B-C1-E2-F-F3-H1-M-N-R-V-Z1	09503	B-F-F1-R-R1-V	09576	B-F-F1-R-R1-V
09289	B-E2-F1-F3-H1-J-L-M-N-R-R1-S-T-U2-V-X-Z1	09357	A-B-C1-E2-F-F3-H1-M-R-V-Z1	09504	B-V	09577	B-F3-S-V
09290	A-B-F1-F3-J-L-M-N-R-S-T-U2-V-X-Z1	09363	A-B-C1-E2-F-F3-H1-M-R-R1-S-V-Z1	09505	B-V	09578	B-F-F1-F3-R-R1-S-V-Z1
09291	B-C-C1-C2-E2-F1-F3-H1-L-N-R-R1-S-T-V-X-Z1	09365	A-B-C-C1-E2-F-F3-H1-M-N-R-V-Z1	09506	B-V	09579	B-F-F1-R-R1-V
09292	A-B-C-C2-E-E2-E3-F1-F3-H-H1-J-L-M-N-R-R1-S-T-V-X-Z1	09366	A-B-C-C1-E2-F-F1-F3-H-H1-M-R-R1-S-V-Z1	09507	B-V	09581	B-F-F1-F3-R-R1-S-V
09301	A-B-C1-C2-E2-F-F1-F3-H1-I3-L-M-N-R-R1-S-T-U4-V-Z-Z1	09401	B-C-C1-F3-M-R-S-U-Z1	09508	B-F-F1-R-R1-V	09582	B-C2-F-F1-F3-R-R1-S-V
09302	A-B-C1-F-F1-F3-H-M-N-R-S-V-Z1	09403	B-C-C1-F3-M-R-S-U-Z1	09509	B-F-F1-R-R1-V	09583	B-F-F1-F3-I3-J-R-R1-S-V-V1
09305	A-B-C1-E2-F-F1-F3-H1-I3-M-N-R-R1-S-T-V-Z-Z1	09410	C2-F-F1-F3-N-R-S-U2	09510	A-B-C1-E2-F-H1-M-R-R1-V-Z1	09586	B-C2-F-F1-F3-R-R1-S-V
09306	A-B-C1-E2-F-F1-F3-H1-R-R1-S-U2-V-Z1	09421	B-C-C1-F3-M-R-S-U-Z1	09511	B-F-F1-R-R1-V	09587	B-C2-E2-E3-F-F1-F3-R-R1-S-V-Z1
09307	B-C-C2-F-F3-N-R-R1-S-Z1	09447	B-C-C1-F3-M-R-S-U-V-Z1	09512	B-F-F1-F3-R-R1-S-V	09588	B-F-F1-F3-R-R1-S-V
09309	A-B-C-C1-C2-E2-F-F1-F3-H1-M-N-R-R1-S-V-Z1	09454	B-C-C1-F3-M-R-S-U-V-Z1	09513	B-F-F1-F3-R-R1-S-V-V1	09589	B-F-F1-F3-R-S-V
09310	A-B-C1-C2-E2-F-F1-F3-H1-I3-L-M-N-R-R1-S-T-U4-V-Z-Z1	09456	B-C-C1-F3-M-N-R-S-U-V-Z1	09514	B-F-F1-F3-R-R1-S-V-V1	09590	B-V
09311	A-B-C1-C2-E2-F-F1-F3-H1-I3-L-M-N-R-R1-S-T-U4-V-Z-Z1	09459	B-C-C1-F3-M-R-S-U-Z1	09517	B-F-F1-F3-R-R1-S-V	09591	B-C2-E2-E3-F-F1-F3-R-R1-S-V-Z1
		09461	B-C-C1-F3-M-P-R-S-U-Z1	09520	B-F-F1-F3-R-R1-S-V	09592	B-F-F1-F3-R-R1-S-V
				09522	B-F-F1-F3-R-S-V	09593	B-F-F1-F3-R-S-V
				09523	B-F-F1-F3-R-R1-S-V	09594	B-C1-E2-F-F1-F3-R-R1-S-V
				09524	B-F-F1-R-R1-V	09595	B-F-F1-F3-I3-J-R-R1-S-V-V1-Z1
				09532	B-F-F1-F3-R-R1-S-V	09596	B-F-F1-R-R1-V
				09533	B-V	09599	B-F-F1-R-R1-V
				09534	B-F-F1-F3-R-R1-S-V	09600	B-C-C2-F-F1-F3-R-S-U-Z1
				09541	A-B-C-F-F3-M-N-S-V-Z1	09602	B-C-F-F1-N-R-U-V
				09542	A-B-C-F-F3-M-N-S-V-Z1	09603	B-C-F-F1-F3-R-S-U-V-Z1
				09543	A-B-C-F-F3-M-N-S-V-Z1	09604	B-C-F-F1-F3-P-R-S-U-V-Z1
						09605	B-C-D-F3-H-M-R-S-U-V
						09606	B-C-D-F3-H-M-R-S-U-V

APO/ FPO/ DPO	See Restrictions	APO/ FPO/ DPO	See Restrictions	APO/ FPO/ DPO	See Restrictions	APO/ FPO/ DPO	See Restrictions
09608	B-C-F-F3-N-R-S-U-V-Z1	09717	A-B-F3-M-R-S-V-W-Z1	09752	B-C-D-F1-F3-H-R-S-U	09816	A-B-C1-C2-E2-E3-F1-F3-J-L-N-R-R1-T-V-Z1
09609	B-C-F-F3-N-R-S-U-Z1	09718	B-F-F1-J-L-M-N-R-T-U-V-Z1	09753	A-B-F-F3-N-R-S-V-Z1	09817	A-B-C1-C2-E2-E3-F1-F3-H-H1-J-L-M-N-R-R1-T-V-Z1
09610	B-C-F-F1-F3-M-R-S-U-V-Z1	09719	B-C-D-F3-M-R-S-U-V-Z1	09754	A-B-F-F3-H-L-N-Q-R-S-V-Z1	09818	A-B-C-F-F3-M-S-V-Z1
09613	B-C-F-F3-N-R-S-U-V	09720	B-F3-M-R-S-U-V-Z1	09755	A-B-C-C1-D-F-F1-F3-J-L-M-N-Q-R-R1-S-T-V-Z1	09820	A-B-C2-F-F1-F3-H-H1-J-L-M-N-R-R1-T-V-Z1
09614	A-B-C1-C2-E2-F-F1-F3-H1-J-L-M-N-R-R1-T-V-W-Z1	09722	A-B-F-F3-H-N-Q-S-V-Z1	09758	A-B-F-F1-F3-M-N-R-R1-S-V-Z1	09821	A-B-C-F-F3-N-R-S-V-Z1
09618	B-C-F-F3-R-S-U-V-Z1	09723	B-C2-F-F1-F3-J-L-M-N-R-R1-T-V-Z1	09759	A-B-C-C1-C2-E2-F1-F3-J-L-N-R-R1-T-V-Z1	09822	A-B-C-F-F3-M-R-S-V-Z1
09620	B-C-F-F3-R-S-U-V-Z1	09724	B-C-C1-F1-F3-M-R-R1-S-U	09761	B-F-F1-F3-M-R-R1-S-V-Z1	09823	A-B-C1-C2-F-F1-F3-J-L-M-N-R-R1-T-V-Z1
09621	B-C-F-F3-R-U-Z1	09725	A-B-F-F3-H-N-Q-R-S-V-V1-Z1	09762	A-B-C2-E3-F-F1-F3-J-L-N-R-R1-T-V-Z1	09824	A-B-C-F-F3-M-R-S-V-Z1
09622	B-C-F-F3-R-S-U-V-Z1	09726	B-F-F1-J-L-M-N-R-T-U-V-Z1	09769	A-B-C-C1-C2-F-F1-F3-J-L-M-N-R-R1-T-V-Z1	09825	A-B-C1-C2-F-F1-F3-J-L-M-N-R-R1-T-V-Z1
09623	B-C-F-F3-R-S-U-V-Z1	09727	A-B-C1-C2-F-F1-F3-J-L-M-N-R-R1-T-V-Z1	09777	A-B-C-C1-C2-E1-F-F1-F3-J-L-M-N-R-R1-T-V-Z1	09826	A-B-C1-C2-E1-E2-E3-F-F1-F3-J-L-M-N-R-R1-T-V-W-Z1
09624	B-C-C2-F-F1-F3-I3-L-N-R-R1-T-U-V-Z1	09728	A-B-C-C1-C2-F-F1-F3-J-L-N-R-R1-T-V-Z1	09780	A-B-F-F3-H-N-R-S-V	09827	A-B-F-F1-J-L-M-N-R-T-V-Z1
09625	B-C-F-F3-N-R-S-U-Z1	09729	B-C-F-F3-N-R-R1-S-U-V-Z1	09789	A-B-C2-F-F3-N-R-S-V-Z1	09828	A-B-C1-C2-F-F1-F3-I3-L-N-R-R1-T-V-Z1
09627	B-C-F-F3-R-S-U-V-Z1	09730	A-B-C1-C2-F-F1-F3-J-L-M-N-R-R1-T-V-Z1	09801	A-B-C1-E2-F-F3-H1-M-N-R-R1-S-V-Z1	09829	B-C-N-R-V-Z1
09630	B-C-F-F3-R-S-U-V	09731	A-B-C1-C2-F-F1-F3-J-L-M-N-R-R1-T-V-Z1	09802	A-B-C-C2-D-F-F1-F3-H-H1-I3-L-M-N-R-R1-S-T-V-W-Z1	09830	B-C-F-F1-F3-J-L-M-N-R-R1-S-T-V-Z1
09633	B-C-D-F-F1-F3-M-R-S-U-U1-U2-U3-V-Z1	09732	B-F-F3-N-S-V-Z1	09803	A-B-C-C2-E-E2-E3-F1-F3-H-H1-J-M-N-R-R1-S-U-V-Z1	09831	B-C1-C2-F-F1-F3-J-L-N-R-R1-T-V-Z1
09634	A-B-F-F3-M-N-R-S-V	09733	B-F-F3-N-R-S-V-Z	09804	A-B-F-F1-F3-M-N-R-S-V-Z1	09832	B-C1-E2-F1-F3-N-R-S-V-Z1
09636	B-C-F-F3-R-U-V-Z1	09734	A-B-C-C1-C2-F-F1-F3-I3-J-L-M-N-R-R1-T-V-Z1	09805	B-C-C2-E2-E3-F-F1-F3-R-R1-S-Z1	09833	B-C1-E2-F1-F3-N-R-S-V-Z1
09642	B-C2-F-F1-F3-J-L-M-N-R-T-U-V	09735	B-F3-N-R-S-V-Z1	09806	A-B-C1-C2-E2-F-F1-F3-H1-J-L-M-N-R-R1-T-V-Z1	09834	B-C-C2-E2-E3-F-F1-F3-R-R1-S-U-Z1
09643	B-C-F3-M-R-S-U-V-Z1	09736	A-B-C1-F-F1-F3-J-L-M-N-R-R1-T-V-Z1	09807	A-B-C1-E2-F-F1-F3-H1-I3-M-N-R-R1-S-T-V-Z1	09836	A-B-C1-C2-F-F1-F3-J-L-M-N-R-R1-V-Z1
09645	B-C-F-F1-F3-R-S-U-Z1	09737	A-B-C1-C2-F-F1-F3-I3-J-L-M-N-R-R1-T-V-W-Y-Z1	09808	A-B-C1-E2-F-F1-F3-H1-I3-M-N-R-R1-S-T-V-Z1	09837	B-E2-E3-F1-F3-R-S-V-Z1
09647	B-F1-F3-M-N-R-S-U-Z1	09738	A-B-C1-C2-F-F1-F3-J-L-M-N-R-R1-T-V-Z1	09809	A-B-C1-C2-E2-F-F1-F3-H-H1-J-L-N-R-R1-T-V-Z1	09838	B-C-C2-E2-E3-F-F1-F3-R-S-U-Z1
09648	B-F3-N-R-S-U-V-Z1	09739	A-B-C1-C2-F-F1-F3-J-L-M-N-R-R1-T-V-Z1	09810	B-C1-C2-E3-F-F1-F3-J-L-N-T-V-Z1	09841	A-B-F3-N-R-S-U-Z1
09649	B-F3-N-R-S-U-Z1	09741	A-B-C1-C2-E2-F-F1-F3-H1-J-L-M-N-R-R1-T-V-W-Y-Z1	09811	A-B-F-F1-F3-N-R-S-V-Z1	09842	A-B-C1-C2-F-F1-F3-J-L-N-R-R1-T-V-Z1
09701	A-B-C1-C2-F-F1-F3-J-L-M-N-R-R1-T-V-Z1	09742	A-B-C2-F-F1-F3-J-L-M-N-R-S-T-V-Z1	09812	A-B-C-C2-E-E2-E3-F1-F3-H-H1-J-M-N-R-R1-S-U-V-Z1	09844	A-B-C1-C2-F-F1-F3-J-L-M-N-R-R1-T-V-Z1
09702	B-C-C1-F1-F3-M-R-R1-S-U	09743	A-B-F-F3-H-N-Q-R-S-V-Z1	09813	A-B-C-C2-E-E2-E3-F1-F3-H-H1-J-M-N-R-R1-S-U-V-Z1	09845	A-B-C1-C2-E3-F-F1-F3-J-L-M-N-R-R1-T-V-Z1
09704	B-C-V-V1	09744	A-B-C1-C2-F-F1-F3-J-L-M-N-R-R1-T-V-Z1	09814	B-E2-E3-F-F1-I-J-L-N-R-T-U-V-Z1	09846	A-B-C1-C2-F-F1-F3-J-L-N-R-R1-T-V-Z1
09705	B-C-C1-F1-F3-M-R-R1-S-U	09745	A-B-F-F1-F3-M-N-R-R1-S-V-Z1	09815	A-B-C1-C2-E2-E3-F1-F3-J-L-N-R-R1-T-V-Z1	09847	B-C-C2-F-F1-F3-J-L-M-N-R-R1-S-T-V-Z1
09706	B-C-F3-M-N-R-S-U-V-Z1	09748	A-B-C1-C2-F-F1-F3-J-L-M-N-R-R1-T-V-Z1	09816	B-C2-E2-E3-F-F1-F3-I3-J-L-N-R-R1-T-V-Z1	09848	A-B-F-F3-M-R-S-V-Z1
09707	B-C2-F-F1-F3-J-L-M-N-R-R1-T-V-Z1	09749	A-B-F-F3-H-N-R-S-U-V-Z1	09817	A-B-C1-C2-E2-E3-F1-F3-I3-J-L-N-R-R1-T-V-Z1	09853	B-C1-E2-F-F1-F3-H1-N-R-R1-S-U2-V-Z1
09708	B-C-C1-F1-F3-M-R-R1-S-U	09750	A-B-C1-C2-F-F1-F3-J-L-M-N-R-R1-T-V-Z1	09818	B-C-D-E-F3-H-M-R-S-U	09854	A-B-C1-C2-F-F1-F3-J-L-N-R-R1-S-T-V-Z1
09709	B-C1-C2-E2-F-F1-F3-H-H1-J-L-N-R-R1-T-V-Z1	09751	B-C-D-E-F3-H-M-R-S-U				
09710	B-C-C1-F-F1-J-L-M-N-R-R1-T-U-V-Z1						
09712	A-B-F-F3-H-R-S-U-V-Z1						
09714	B-C-C1-F1-F3-M-R-R1-S-U						
09715	B-F-F1-J-L-M-N-R-T-V-Z1						
09716	B-C-C2-F-F1-F3-J-L-M-N-R-R1-T-V-Z1						

APO/ FPO/ DPO	See Restrictions	APO/ FPO/ DPO	See Restrictions	APO/ FPO/ DPO	See Restrictions	APO/ FPO/ DPO	See Restrictions
09855	A-B-C-C1-C2-E2-F-F1-F3-H1-M-R-R1-S-U2-V-Z1	09908	A-B-F-F1-F3-N-R-R1-S-V-Z1	34052	B-V	96212	B-F-F1-F2-H-M-W-Z1
09856	B-C-C1-C2-F-F1-F3-H-H1-J-L-M-N-S-T-V-Z1	09909	A-B-F-F1-F3-N-R-R1-S-V-V1-Z1	34053	B-V	96213	A-B-C-F1-F3-R-S-U
09857	A-B-C2-E2-F-F1-F3-13-L-M-N-R-R1-S-T-V-Z-Z1	09974	B-F1-F3-J-L-M-N-R-S-T-U2-V-X-Z1	34054	B-V	96214	A-B-C-F1-F3-R-S-U
09858	A-B-C-C1-C2-E2-E3-F1-F3-H-H1-J-M-N-R-R1-S-U-V-Z1	09975	B-F1-F3-I3-L-M-N-R-S-T-U2-V-X-Z-Z1	34055	B-C1-C2-F-F1-F3-J-L-M-N-R-R1-T-V-Z1	96218	A-B-F-F1-F3-M-R-S-U
09859	B-C-C1-C2-E2-E3-F-F1-F3-H1-R-R1-S-U-Z1	09976	B-F1-F3-J-L-M-N-R-S-T-U2-V-X-Z1	34058	B-F-F1-F3-R-R1-S-V-Z1	96224	A-B-F-F1-F3-M-R-S-U
09860	A-B-C2-F-F1-F3-J-L-M-N-R-R1-S-T-V-Z1	09977	B-F1-F3-J-L-M-N-R-S-T-U2-V-X-Z1	34060	B-C1-C2-E2-F-F1-F3-J-L-M-N-R-R1-T-V-Z1	96251	A-B-F-F1-F3-M-R-S-U
09862	A-B-C-C2-F-F1-F3-I3-L-M-N-R-R1-S-T-V-X-Z-Z1	34001	A-B-C1-C2-F-F1-F3-J-L-M-N-R-R1-S-T-V-Z1	34066	B-C1-C2-F-F1-F3-I3-J-L-M-N-R-R1-S-T-V-X-Z-Z1	96257	A-B-F-F1-F3-S-U
09864	A-B-C-C1-C2-E2-F1-F3-L-M-N-R-R1-S-T-V-W-Z1	34002	B-C1-C2-F-F1-F3-J-L-M-N-R-R1-T-V-Z1	34067	B-C1-C2-F-F1-F3-J-L-M-N-R-R1-S-T-V-X-Z1	96258	A-F-F3-M-P-R-S-U
09865	A-B-F3-R-S-U-V-Z1	34004	B-C1-C2-F-F1-F3-J-L-M-N-R-R1-T-V-Z1	34068	B-C1-C2-F-F1-F3-J-L-M-N-R-R1-S-T-V-X-Z1	96260	A-B-F-F1-F3-M-R-S-U
09867	A-B-C-C1-C2-E2-F1-F3-L-M-N-R-R1-S-T-V-W-Z1	34007	B-F-F1-H-J-M-N-R-R1-V-Z1	34069	B-C1-C2-F-F1-F3-I3-J-L-M-N-R-R1-S-T-V-X-Z-Z1	96262	A-B-F-F1-F3-R-S-U-V-Z1
09868	A-B-E1-E2-E3-F1-F3-M-N-R-S-U-V-Z1	34008	B-C1-C2-D-E1-F-F1-H-H1-J-L-M-N-R-R1-T-V-Z1	34078	B-F1-F3-N-R-S-V-Z1	96264	A-B-C-F1-F3-R-S-U
09869	A-B-C1-C2-E2-F1-F3-L-M-N-R-R1-S-T-V-W-Z1	34011	B-C1-C2-E2-F-F1-F3-J-L-M-N-R-R1-T-V-Z1	34080	B-F-F1-R-R1-V	96266	A-B-C-F1-F3-R-S-U
09870	A-B-C1-C2-E2-F-F1-F3-H1-I3-L-M-N-R-R1-S-T-U4-V-Z-Z1	34020	B-C1-C2-F-F1-F3-J-L-M-N-R-R1-T-V-Z1	34081	B-F-F1-R-R1-V	96267	A-B-C-F1-R-U-V
09873	A-B-C1-C2-E2-F-F1-F3-H1-I3-L-M-N-R-R1-S-T-U4-V-Z-Z1	34021	B-C1-C2-F-F1-F3-J-L-M-N-R-R1-T-V-Z1	34082	B-F-F1-R-R1-V	96269	A-B-F1-F2-F3-R-S-U-Z1
09874	A-B-C1-C2-E2-F-F1-F3-H1-I3-L-M-N-R-R1-S-T-U4-V-Z-Z1	34022	B-C1-C2-F-F1-F3-J-L-M-N-R-R1-T-V-Z1	34084	B-F-F1-R-R1-V	96271	A-F-F3-M-P-R-S-U
09875	A-B-C1-C2-E2-F-F1-F3-H1-I3-L-M-N-R-R1-S-T-U4-V-Z-Z1	34023	B-C1-C2-F-F1-F3-J-L-M-N-R-R1-T-V-Z1	34085	B-F-F1-F3-R-R1-S-V	96273	A-B-F-F1-F3-M-R-S-U
09877	A-B-C-C2-E-E2-E3-F1-F3-H-H1-J-M-N-R-R1-S-U-V-Z1	34024	B-C1-C2-F-F1-F3-J-L-M-N-R-R1-T-V-Z1	34086	B-F-F1-F3-R-R1-S-V	96275	A-B-F-F1-F3-M-R-S-U
09880	A-B-C1-C2-E2-F-F1-F3-H1-J-L-N-R-R1-S-T-U-V-Z1	34025	B-F-F1-F3-J-L-M-N-R-R1-T-V-Z1	34087	B-E2-F-F1-F3-R-R1-S-V	96276	A-B-C-F1-R
09890	B-E2-F-H1-N-R-R1-U2-V-Z1	34030	B-C1-C2-F-F1-F3-J-L-M-N-R-R1-T-V-Z1	34088	B-F-F1-R-R1-V	96278	A-B-C-F1-F3-R-S-U
09892	A-B-C1-C2-E2-F-F1-F3-J-L-M-N-R-R1-T-V-Z1	34031	B-C1-C2-F-F1-F3-J-L-M-N-R-R1-T-V-Z1	34089	B-F-F1-R-R1-S-V	96283	A-B-F-F1-F3-S-U
09895	A-B-C1-C2-E2-F-F1-F3-J-L-M-N-R-T-V-W-Z1	34032	B-C1-C2-F-F1-F3-J-L-M-N-R-R1-T-V-Z1	34090	B-F-F1-R-R1-V	96284	A-B-F-F1-F3-R-S-U
09902	A-B-C1-E2-F-F3-H1-M-R-R1-S-V-Z1	34033	B-C1-C2-F-F1-F3-I3-L-M-N-R-T-V-Z-Z1	34091	B-E2-E3-F-F1-F3-R-R1-S-V-Z1	96297	A-B-F-F1-F3-R-S-U
09903	B-C1-E2-F1-F3-S-V-Z1	34034	B-C1-C2-F-F1-F3-I3-L-M-N-R-R1-T-V-Z-Z1	34092	B-F-F1-F3-R-R1-S-V	96300	A-B-F3-M-R-S-V-Z1
09904	B-C1-E2-F1-F3-S-V-Z1	34035	B-C1-C2-F-F1-F3-H-J-L-M-N-R-R1-T-V-Z1	34093	B-F-F1-F3-R-R1-S-V	96301	A-B-F-F3-M-N-R-S-U2-W
		34036	B-C1-C2-F-F1-F3-J-L-M-N-R-R1-T-V-Z1	34094	B-F-F1-F3-R-R1-S-V	96303	B-C1-C2-F-F1-H-J-L-M-N-T-V-W-Z1
		34037	B-C-C1-C2-F-F1-F3-H-J-L-M-N-R-R1-T-V-Z1	34095	B-F-F1-R-R1-V	96306	B-F-F1-F2-F3-H-M-R-S-W-Z1
		34039	B-C1-C2-F-F1-J-L-M-N-T-V-Z1	96201	A-B-F-F1-F3-M-R-S-U	96310	B-F3-M-R-S-W
		34041	B-C1-C2-F-F1-F3-J-L-M-N-R-R1-T-V-Z1	96202	A-B-F-F1-F3-M-R-S-U	96311	B-F3-M-R-S-W
		34042	A-B-C-F-F1-F3-M-N-R-S-U-V-W-Z1	96203	A-B-F-F1-F3-M-R-S-U	96315	B-F-F1-F3-H-M-R-S-W
		34050	B-V	96204	A-B-F-F1-F3-M-R-S-U	96319	B-C-F3-M-R-S-V-W
		34051	B-V	96205	A-B-F-F1-F3-M-R-S-U	96321	B-F-F1-F2-F3-H-M-R-S-W-Z1
				96206	A-B-F-F1-F3-M-R-S-U	96322	B-F-F1-F2-F3-H-M-R-S-W-Z1
				96207	A-B-F-F1-F3-M-R-S-U-V	96326	B-C-F-F3-M-R-S-W
				96208	A-B-F-F1-F3-M-R-S-U	96328	B-C-F3-M-R-S-W
				96209	A-B-C1-C2-F-F1-J-L-M-N-T-U-V-Z1	96331	A-B-F-F1-F3-J-L-M-N-R-S-U2-W
				96210	A-B-C1-C2-F-F1-F3-I3-L-M-N-R-R1-T-V-Z-Z1	96336	B-C-F3-M-R-S-V-W
						96337	B-F-F1-F3-M-R-R1-S-W
						96338	A-B-F-F3-M-R-S-U2-W
						96339	A-B-F-F3-M-R-S-U2-W
						96343	A-F-F3-M-P-R-S-U2
						96346	B-F-F1-F2-F3-H-M-R-S-W-Z1

APO/ FPO/ DPO	See Restrictions	APO/ FPO/ DPO	See Restrictions	APO/ FPO/ DPO	See Restrictions	APO/ FPO/ DPO	See Restrictions
96347	B-F-F1-F2-H-M-W-Z1	96507	A-B-C1-C2-F-F1-H-J-L-M-N-T-V-Z1	96555	A-B-F-F3-M-R-S-V	96644	B-V
96349	B-F-F1-F2-F3-H-M-R-S-W-Z1	96510	B-I3-N-V	96557	A-B-F-F3-M-R-S-V	96645	B-V
96350	B-F-F1-F2-F3-H-M-R-S-W-Z1	96511	B-I3-N-V	96562	A-B-C1-C2-D-E2-E3-F-F1-H-H1-I3-L-M-N-R-R1-S-T-V-Z-Z1	96649	B-F-F1-F3-R-R1-S-V
96351	B-F-F1-F2-F3-H-M-R-S-W-Z1	96515	B-C-D-E1-F-F1-F3-H-H1-M-N-R-S-T-Z1	96577	A-B-F-F3-H-M-N-R-S-U	96650	B-F-F1-R-R1-V
96362	B-F-F1-F2-M-W-Z1	96516	B-C-D-E1-E2-F-F1-F3-H-H1-M-N-R-S-T-Z1	96578	B-F1-F3-H-J-N-R-S	96657	B-F-F1-F3-R-R1-S-V
96365	B-C-F3-M-R-S-V-W	96517	B-C-D-E1-E2-F-F1-F3-H-H1-M-N-R-T-U-V-Z1	96595	B-F-F3-R-S-V-Z1	96660	B-F-F1-F3-R-R1-S-V
96367	B-C-F3-L-M-R-S-W	96520	B-F-N-U3-V	96598	B-F3-I3-N-R-S-V-V1	96661	B-F-F1-F3-R-R1-S-V
96368	B-C-F3-M-R-S-W	96521	B-C1-C2-F-F1-J-L-M-N-R-R1-S-T-V-Z1	96599	B-F3-N-R-S-V	96662	B-F-F1-F3-R-R1-S-V
96370	B-F-F1-F2-H-M-W-Z1	96530	A-B-C1-C2-F-F1-H-H1-J-L-M-N-R-R1-S-T-V-Z1	96601	B-V	96663	B-F-F1-F3-R-R1-S-V1
96371	B-F-F3-M-R-S-W	96531	A-B-C-F-F1-F3-H-M-N-R-S-U-V	96602	B-V	96664	B-V
96372	B-M-W	96532	A-B-C1-C2-F-F1-H-J-L-M-N-R-R1-S-T-V-Z1	96603	B-V	96665	B-V
96373	B-M-W	96533	A-B-C1-C2-F-F1-H-J-L-M-N-R-R1-S-T-V-Z1	96604	B-V	96666	B-F3-R-S-V
96374	B-M-W	96534	A-B-F-F1-F2-F3-S-U-Z1	96605	B-V+B559	96667	B-F-F1-F3-R-R1-S-V
96375	B-F3-M-R-S-W	96535	A-B-C1-C2-F-F1-J-L-M-N-R-R1-S-T-V-Z1	96606	B-F3-R-S-V	96668	B-F-F1-R-R1-V
96376	B-F3-M-R-S-W	96537	B-V-Z1	96607	B-V	96669	B-F-F3-R-R1-S-V
96377	B-F-F3-M-R-S-W	96540	B-F1-F2-F3-S-Z1	96608	B-E2-F-H1-R1-U2-V-Z1	96670	B-V
96378	B-M-W	96542	B-V-Z1	96609	B-E2-F-H1-R1-U2-V-Z1	96671	B-F-F1-F3-R-R1-S-V
96379	B-F3-M-R-S-W	96543	B-F-F1-F2-F3-P-S-V-Z1	96610	B-E2-F-H1-R1-U2-V-Z1	96672	B-F-F1-F3-R-R1-S-V
96380	B-F3-M-R-S-W	96544	A-B-F-F1-F3-H-M-R-S-U	96611	B-E2-F-H1-R1-U2-V-Z1	96673	B-F3-S-V
96382	B-F-F3-M-R-S-W	96548	A-B-F-F1-F3-H-M-R-S-U	96612	B-V	96674	B-F-F1-F3-R-R1-S-V
96384	B-F-F3-M-R-S-W	96549	A-B-C1-C2-F-F1-H-J-L-M-N-R-R1-S-T-V-Z1	96613	B-V	96675	B-F-F1-F3-R-R1-S-V
96385	B-F-F3-M-R-S-W	96550	A-B-H-M-N-U-V-Z1	96615	B-F-F1-R-R1-V	96677	B-F-F1-F3-R-R1-S-V
96386	B-F3-M-S-W	96551	A-B-C1-C2-F-F1-H-J-L-M-N-R-R1-S-T-V-Z1	96616	B-C2-F-F1-F3-R-R1-S-V	96678	B-F-F1-F3-R-R1-S-V
96387	B-F3-M-R-S-W	96552	B-Z1	96619	B-F1-F3-R-S-V	96679	B-F-F1-R-R1-V
96388	B-F3-M-R-S-W	96553	A-B-F-F1-H-M-N-R-U	96620	B-F-F1-F3-R-R1-S-V	96681	B-V
96389	B-M-W	96554	A-B-C1-C2-F-F1-H-J-L-M-N-R-R1-S-T-V-Z1	96628	B-F-F1-F3-R-R1-S-V	96682	B-V
96401	B-C-F-F3-N-R-S-V-V1-Z1			96629	B-F-F1-F3-R-R1-S-V	96683	B-F-F1-F3-R-R1-S-V
96502	A-C1-F-F1-F3-M-N-Q-R-R1-S-T-U2-V			96632	B-F-F1-F3-R-R1-S-V	96686	B-V
96504	A-B-C-C1-C2-F-F1-F3-I3-L-M-N-R-R1-T-V-W-Z-Z1			96633	B-V	96691	B-F-F1-F3-R-R1-S-V
96505	A-B-C-C1-C2-F-F1-F3-I3-L-M-N-R-R1-S-T-V-W-Z-Z1			96641	B-V	96692	B-F-F1-F3-R-R1-S-V
				96642	B-V	96693	E2-F-F3-R-R1-S-V
				96643	B-F-F1-F3-R-R1-S-V	96694	B-E2-F-F1-F3-I3-J-R-R1-S-V-V1-Z
						96695	B-F-F1-R-R1-V
						96696	B-F-F1-R-R1-V
						96698	B-V

RESTRICTIONS

LEGEND

PS Form 2976, *Customs — CN 22 (Old C 1) and Sender's Declaration* (green label)

PS Form 2976-A, *Customs Declaration and Dispatch Note*

PS Form 2976-B, *Priority Mail Express International Shipping Label and Customs Form*

ATF	= Bureau of Alcohol, Tobacco, Firearms, and Explosives
Box C	= Department of State (DOS) contractor personnel
Box R	= Retired military personnel
DPO	= Diplomatic Post Office
MPO	= Military Post Office
PACT	= Prevent All Cigarette Trafficking Act
PAL	= Parcel Airlift
PMEMS	= Priority Mail Express Military Service
PUB 52	= Publication 52, <i>Hazardous, Restricted, and Perishable Mail</i>
SAM	= Space Available Mail
USDA	= United States Department of Agriculture

Note: Mail order catalogs are prohibited as SAM or PAL mail.

A. Securities, currency, or precious metals, including in their raw, unmanufactured state, are prohibited. Official Mail shipments are exempt from this restriction.

A1. Reserved for future use.

A2. Reserved for future use.

B. Other than for PMEMS and the exceptions listed below, a customs declaration PS Form 2976 or PS Form 2976-A is required for all items weighing 16 ounces or more, and for all items (regardless of weight) containing potentially dutiable mail contents (e.g., merchandise or goods) addressed to or from this ZIP Code. Other than the exceptions listed below, all PMEMS mailpieces (regardless of mail contents or weight) addressed to or from this ZIP Code must bear a properly completed PS Form 2976-B. The surface area of the address side of the mailpiece must be large enough to contain the applicable customs declaration. The following exceptions apply to known mailers, who for this purpose are defined as follows:

- Business mailers who enter volume mailings through business mail entry units or other bulk mail acceptance locations, pay postage through advance deposit accounts, use permit imprints for postage payment, and submit completed postage statements at the time of entry that certify that the mailpieces contain no dangerous materials that are prohibited by postal regulations. Such business mailers are exempt from providing customs documentation on non-dutiable letters and printed matter.
- All federal, state, and local government agencies whose mailings are regarded as "Official Mail." Such agencies are exempt from providing customs documentation, except for any items addressed to an MPO or DPO to which restriction "B2" applies.

B2. All federal, state, and local government agencies must complete customs documentation when sending potentially dutiable mail addressed to or from this MPO or DPO.

C. Cigarettes and other tobacco products, including tobacco leaves, chewing and pipe tobacco, snuff, and cigars are prohibited, including those that are authorized in Publication 52 under PACT.

C1. Obscene and horror articles, images, prints, paintings, cards, films, videotapes, comic books, etc., are prohibited.

C2. E-cigarettes and related products (e.g., nicotine liquids, e-liquids, parts, or supplies) are prohibited.

D. Coffee is prohibited.

E. Medicines (prescription, over-the-counter, vitamins, and supplements) are prohibited when mailed to individuals for human or animal use. This prohibition does not apply when medicines are sent as Official Mail only between specifically designated agencies such as pharmaceutical distributors, hospitals, clinics, and pharmacies.

E1. Mailers are responsible to ensure that all medicines and vaccines conform to host nation laws.

E2. Any matter depicting nude or seminude persons, pornographic, or sexual items are prohibited. Non-authorized political materials are prohibited. Religious materials contrary to the Islamic faith are prohibited in bulk quantities, but individual items for the personal use of the addressee are permissible.

E3. Radio transceivers, cordless/cellular telephones, global positioning systems, scanners, base stations, and handheld transmitters are prohibited.

F. Firearms of any type are prohibited, except firearms mailed to or by official U.S. government agencies. This restriction does not apply to firearms mailed from this MPO ZIP Code, provided ATF and USPS regulations are met. Antique firearms do not require an ATF form.

F1. Weapons of any type are prohibited.

F2. Mailing firearms to or from this MPO ZIP Code is restricted to one shotgun and one single shot .22 caliber rifle per individual.

F3. Replica weapons and inert explosive devices (such as grenades) and weapons parts are prohibited.

G. Parcels of any class are prohibited.

H. Meats, including preserved meats, bones, skin, hair, feathers, horns or hoofs of hoofed animals, and wool samples whether hermetically sealed or not, are prohibited.

H1. Pork or pork by-products are prohibited.

I. Reserved for future use.

I1. Reserved for future use.

I2. Reserved for future use.

I3. Mail of all classes must fit in a mail sack. Mail may not exceed the following dimensions:

- Maximum length 27 inches.
- Maximum width 14 inches.
- Maximum height 14 inches.

J. Standard Post and Parcel Select parcels may not exceed 108 inches in length and girth combined.

K. Reserved for future use.

L. All Official Mail is prohibited.

M. Fruits, vegetables, live animals, and live plants are prohibited.

N. Registered Mail service is prohibited.

O. Reserved for future use.

P. Official Mail only.

Q. Mail may not exceed 66 pounds, and size is limited to 42 inches maximum length and 72 inches maximum length and girth combined.

R. All alcoholic beverages, including those mailable under Publication 52, Part 421, are prohibited.

R1. Materials used in the production of alcoholic beverages (i.e., distilling material, hops, malts, yeast, etc.) are prohibited.

S. Synthetic cannabinoids used to stimulate the central nervous system commonly known as "synthetic marijuana," "K2," or "Spice" are prohibited.

T. Mailings of household shipments and case lots of food to or from an MPO require military transportation office approval prior to mailing. Mailings to or from a DPO require pre-approval from the Diplomatic Pouch and Mail Director.

U. Mail addressed to Retirees (Box R) is limited to 16 ounces and up to a 90-day supply of TRICARE medications. This restriction does not apply to mail endorsed "Free Matter for the Blind or Handicapped."

U1. Mail is limited to First-Class Mail items, including audio and video media, weighing 13 ounces or less. This limitation does not apply to Official Mail.

U2. Retirees (Box R) are not authorized mail service.

U3. Reserved for future use.

U4. Mail addressed to Box C is limited to 2 lbs.

V. PMEMS is not available.

V1. Electronic Delivery status information for Extra Services is not available on *USPS.com*. Manual record of delivery may be available upon request.

W. Hermetically sealed packages of meat products bearing USDA certification, such as dried beef, salami, and sausage, may be mailed. 200 grams of tobacco per parcel are permitted duty free.

X. Cremated remains are prohibited.

Y. Mail is limited to First-Class Mail and Priority Mail items only. This restriction also applies to Official Mail.

Z. No outside pieces (OSPs).

Z1. The following restriction is applicable only to International Service Centers (ISC)/Exchange Offices. An Anti-Pilferage Seal (Item No O817E or O818A) is required on all pouches and sacks.

— *International Network Operations,
Global Business, 6-17-21*

Thrift Savings Plan Fact Sheet

ANNUAL RETURNS	G Fund	F Fund	U.S. Aggregate Index	C Fund	S&P 500 Stock Index	S Fund	Dow Jones U.S. Completion TSM Index	I Fund	EAFE Stock Index
2006	4.93	4.40	4.33	15.79	15.79	15.30	15.28	26.32	26.34
2007	4.87	7.09	6.97	5.54	5.49	5.49	5.39	11.43	11.17
2008	3.75	5.45	5.24	-36.99	-37.00	-38.32	-39.03	-42.43	-43.38
2009	2.97	5.99	5.93	26.68	26.46	34.85	37.43	30.04	31.78
2010	2.81	6.71	6.54	15.06	15.06	29.06	28.62	7.94	7.75
2011	2.45	7.89	7.84	2.11	2.11	-3.38	-3.76	-11.81	-12.14
2012	1.47	4.29	4.22	16.07	16.00	18.57	17.89	18.62	17.32
2013	1.89	-1.68	-2.02	32.45	32.39	38.35	38.05	22.13	22.78
2014	2.31	6.73	5.97	13.78	13.69	7.80	7.63	-5.27	-4.90
2015	2.04	0.91	0.55	1.46	1.38	-2.92	-3.42	-0.51	-0.81
2016	1.82	2.91	2.65	12.01	11.96	16.35	15.75	2.10	1.00
2017	2.33	3.82	3.54	21.82	21.83	18.22	18.12	25.42	25.03
2018	2.91	0.15	0.01	-4.41	-4.38	-9.26	-9.57	-13.43	-13.79
2019	2.24	8.68	8.72	31.45	31.49	27.97	27.94	22.47	22.01
2020	0.87	4.73	4.72	17.16	17.25	36.45	36.67	9.99	8.94

MONTHLY RETURNS	G Fund	F Fund	U.S. Aggregate Index	C Fund	S&P 500 Stock Index	S * Fund	Dow Jones U.S. Completion TSM Index	I * Fund	EAFE Stock Index
2020									
June	0.06	0.63	0.63	1.99	1.99	4.00	4.05	3.44	-3.41
July	0.06	1.49	1.49	5.64	5.64	5.71	5.70	2.33	2.33
Aug	0.05	-0.81	-0.81	7.19	7.19	7.20	7.18	5.12	5.14
Sept	0.06	-0.03	-0.05	-3.80	-3.80	-3.04	-2.99	-2.60	-2.60
Oct	0.06	-0.42	-0.45	-2.66	-2.66	0.50	0.45	-3.97	-3.99
Nov	0.07	0.99	0.98	10.95	10.95	18.26	18.27	15.54	15.50
Dec	0.07	0.14	0.14	3.84	3.84	7.24	7.24	4.64	4.65
2021									
Jan	0.07	-0.71	-0.72	-1.01	-1.01	2.85	2.84	-1.09	-1.07
Feb	0.08	-1.45	-1.44	2.76	2.76	5.21	5.19	2.26	2.24
Mar	0.11	-1.23	-1.25	4.38	4.38	-0.39	-0.40	2.35	2.30
Apr	0.13	0.82	0.79	5.33	5.34	4.23	4.22	3.09	3.01
May	0.13	0.34	0.33	0.69	0.70	-0.66	-0.66	3.61	3.26
YTD	0.53	-2.22	-2.29	12.61	12.62	11.60	11.56	10.58	10.07

The G Fund is managed internally by the Federal Retirement Thrift Investment Board. Assets of the F, C, S, and I Funds are managed externally. The Board currently has contracts with BlackRock Institutional Trust Company, N.A., to manage the F, C, S, and I Fund assets. The F, C, S, and I Funds invest in commingled trust funds, in which the assets of tax-deferred employee benefit plans are combined and invested together. The F, C, S, and I Funds and the BlackRock funds are passively managed index funds.

Future performance of the funds will vary and may be significantly different from the returns shown above. See the *Summary of the*

Thrift Savings Plan for detailed information about the funds and their investment risks. The monthly returns of the TSP Funds represent net earnings for the month after deduction of accrued administrative expenses and, except for the G Fund, after deduction of trading costs and accrued investment management fees as well. The returns for the four indexes shown do not include any of these deductions.

* Implemented May 2001.

See next page for L Funds.

L Funds

Annual Returns	L Income	L 2020	L 2030	L 2040	L 2050
2006	7.59	13.72	15.00	16.53	
2007	5.56	6.87	7.14	7.36	
2008	-5.09	-22.77	-27.50	-31.53	
2009	8.57	19.14	22.48	25.19	
2010	5.74	10.59	12.48	13.89	
2011	2.23	0.41	-0.31	-0.96	
2012	4.77	10.42	12.61	14.27	15.85
2013	6.97	16.03	20.16	23.23	26.20
2014	3.77	5.06	5.74	6.22	6.37
2015	1.85	1.35	1.04	0.73	0.45
2016	3.58	5.47	7.07	7.90	8.65
2017	6.19	9.86	14.54	16.77	18.81
2018	0.71	-0.36	-3.58	-4.89	-6.02
2019	7.60	9.38	17.60	20.69	23.33
2020	5.04		11.41	13.41	15.14

Monthly Returns	L Income	L 2025	L 2030	L 2035	L 2040	L 2045	L 2050	L 2055	L 2060	L 2065
2020										
July	1.11	2.19	2.82	2.86	3.35	3.32	3.80	4.13	4.13	4.13
Aug	1.39	3.17	3.81	4.18	4.56	4.88	5.21	6.41	6.40	6.40
Sept	-0.66	-1.58	-1.92	-2.11	-2.30	-2.46	-2.63	-3.20	-3.20	-3.20
Oct	-0.58	-1.30	-1.61	-1.76	-1.91	-2.04	-2.17	-2.60	-2.60	-2.60
Nov	3.00	6.56	8.10	8.92	9.74	10.47	11.19	13.55	13.55	13.55
Dec	1.07	2.27	2.79	3.06	3.34	3.59	3.83	4.63	4.63	4.63
2021										
Jan	-0.10	-0.24	-0.32	-0.35	-0.37	-0.39	-0.41	-0.44	-0.44	-0.44
Feb	0.63	1.35	1.70	1.86	2.03	2.17	2.32	2.93	2.93	2.93
Mar	0.71	1.44	1.78	1.93	2.08	2.20	2.33	2.92	2.92	2.91
Apr	1.14	2.15	2.74	2.99	3.24	3.45	3.66	4.35	4.35	4.35
May	0.47	0.81	1.00	1.08	1.16	1.22	1.28	1.50	1.50	1.50
YTD	2.88	5.61	7.07	7.71	8.36	8.91	9.49	11.70	11.70	11.69

The TSP added six new L Funds that have 5-year increments rather than the previous 10-year increments.

Freely Associated States Restrictions

We list the mailing restrictions for Freely Associated States (FAS) in the Pull-Out section of the *Postal Bulletin*. All FAS Restrictions will be updated periodically.

Freely Associated States

Mail addressed to freely associated states is subject to certain conditions or restrictions of mailing regarding content, preparation, and handling. The following FAS Restrictions table outlines these conditions as listed by each affected FAS ZIP Code™ through the use of footnoted mailing restrictions codes (see the [Restrictions](#) following the table). For more information on available extra services for FAS destinations, see *Mailing Standards of the United States Postal Service, Domestic Mail Manual (DMM®)*, part 503.

Acceptance clerks must use the table with the Retail System Software terminal to determine which FAS ZIP Codes are active and which conditions of mailing apply.

FAS Restrictions Table

FAS Table	See Restrictions
96939	A, B
96940	A, B
96941	A, B
96942	A, B
96943	A, B
96944	A, B
96960	A, B
96970	A, B, D
Marshall Islands	C
Federated States of Micronesia	C

RESTRICTIONS LEGEND

PS Form 2976, *Customs Declaration CN 22 – Sender's Declaration*

PS Form 2976-A, *Customs Declaration and Dispatch Note*

FAS = Freely Associated State

- A.** Bank currency (coin and paper) is prohibited.
- B.** Signature Confirmation, Signature Confirmation Restricted Delivery, Adult Signature Requested, Adult Signature Restricted Delivery, Certified Mail Adult Signature Required, and Certified Mail Adult Signature Restricted Delivery not available.
- C.** Collect on Delivery is prohibited.
- D.** Betel nut (Areca catechu) is prohibited.

— *Asia-Pacific Relations,
Global Business, 6-17-21*

Stamp Announcement 21-21: Western Wear Stamps



©2020 USPS

On July 23, 2021, in Abilene, TX, the United States Postal Service® will issue the *Western Wear* stamps (Forever® priced at the First-Class Mail® rate) in four designs, in a pressure-sensitive adhesive (PSA) double-sided booklet of 20 stamps (Item 683300). These stamps will go on sale nationwide July 23, 2021, and must not be sold or canceled before the first-day-of-issue.

The Postal Service™ celebrates the enduring legacy of Western wear with four fun new stamps that feature graphic illustrations of Western wear staples:

- Cowboy boot with a spur,
- Cowboy hat,
- Western shirt, and
- Belt buckle featuring a longhorn head.

A stippling technique, creating images using small dots of color, was used to give the illustrations a worn and gritty feel. Each image is framed by elements common to the American West and iconography of the region, including cacti, snakes, roses, and stars. Art director Greg Breeding designed the stamps with original art by Ryan Feerer.

Availability to Post Offices: Item 683300, Western Wear (Forever Priced at the First-Class Mail Rate) PSA Double-sided Booklet of 20 Stamps

Stamp Fulfillment Services will not make an automatic push distribution to Post Offices. Post Offices may begin ordering stamps before the first-day-of-issue through SFS Web at sfsweb.usps.gov.

How to Order the First-Day-of-Issue Postmark

Customers have 120 days to obtain the first-day-of-issue postmark by mail. They may purchase new stamps at their local Post Office™ or at The Postal Store® website at usps.com/shop. They must affix the stamps to envelopes of their choice, address the envelopes (to themselves or others), and place them in a larger envelope addressed to:

FDOI – Western Wear Stamps
 USPS Stamp Fulfillment Services
 8300 NE Underground Drive, Suite 300
 Kansas City, MO 64144-9900

After applying the first-day-of-issue postmark, the Postal Service will return the envelopes through the mail. There is no charge for the postmark up to a quantity of 50. There is a 5-cent charge for each additional postmark over 50. All orders must be postmarked by November 23, 2021.

How to Order First-Day Covers

The Postal Service also offers first-day covers for new stamp issues and Postal Service stationery items postmarked with the official first-day-of-issue cancellation. Each item has an individual catalog number and is offered in the *USA Philatelic* catalog and online at usps.com/shop. Customers may register to receive a free *USA Philatelic* catalog online at usps.com/philatelic.

Locally produced items are not authorized. Only merchandise that has been approved and assigned an item number by Headquarters Retail Marketing may be produced and sold.

Issue:	<i>Western Wear Stamps</i>
Item Number:	683300
Denomination & Type of Issue:	First-Class Mail Forever
Format:	Double-sided Booklet of 20 (4 designs)
Series:	N/A
Issue Date & City:	July 23, 2021, Abilene, TX 79601
Art Director:	Greg Breeding, Charlottesville, VA
Designer:	Greg Breeding, Charlottesville, VA
Artist:	Ryan Feerer, Abilene, TX
Modeler:	Joseph Sheeran
Manufacturing Process:	Offset
Printer:	Offset
Press Type:	Muller A76
Stamps per Booklet:	20
Print Quantity:	175,000,000 stamps
Paper Type:	Nonphosphored Type III, Block Tag
Adhesive Type:	Pressure-sensitive
Stamp Orientation:	Vertical
Image Area (w x h):	0.77 x 1.05 in./19.558 x 26.67 mm
Stamp Size (w x h):	0.91 x 1.19 in./23.114 x 30.226 mm
Full Booklet Size (w x h):	5.76 x 2.38 in./146.304 x 60.452 mm
Colors:	Cyan, Magenta, Yellow, Black
Plate Size:	880 stamps per revolution
Plate Number:	"P" followed by four (4) single digits
Marginal Markings:	
Front:	Header: "Western Wear" Twenty First-Class Forever Stamps • USPS logo • Plate number in peel strip area • ©2020 USPS in peel strip area • Barcode
Back:	Promotional text in peel strip area

— *Stamp Services,
Marketing, 6-17-21*

Stamp Announcement 21-22: Ursula K. Le Guin Stamp



©2021 USPS

On July 27, 2021, in Portland, OR, the United States Postal Service® will issue the *Ursula K. Le Guin* stamp (Non-denominated priced at the 3-ounce rate) in one design, in a pressure-sensitive adhesive (PSA) pane of 20 stamps (Item 121400). This stamp will go on sale nationwide July 27, 2021, and must not be sold or canceled before the first-day-of-issue.

The 33rd stamp in the *Literary Arts* series honors Ursula K. Le Guin (1929–2018), who expanded the scope of literature through novels and short stories that increased critical and popular appreciation of science fiction and fantasy. The stamp features a portrait of Le Guin based on a 2006 photograph. The background shows a scene from her landmark 1969 novel *The Left Hand of Darkness*, in which an envoy from Earth named Genly Ai escapes from a prison camp across the wintry planet of Gethen with Estraven, a disgraced Gethenian politician. The artist for this stamp was Donato Giancola. The art director was Antonio Alcalá. The words “THREE OUNCE” on this stamp indicate its usage value. Like a Forever® stamp, this stamp will always be valid for the rate printed on it.

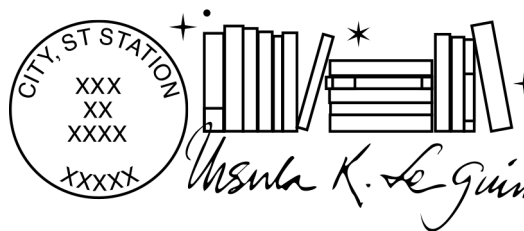
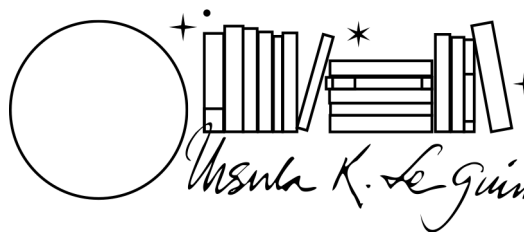
Availability to Post Offices: Item 121400, Ursula K. Le Guin (3-ounce Rate, Non-denominated) PSA Pane of 20 Stamps

Stamp Fulfillment Services will not make an automatic push distribution to Post Offices. Post Offices may begin ordering stamps before the first-day-of-issue through SFS Web at sfsweb.usps.gov.

Special Dedication Postmarks

Only the following pictorial postmark is permitted for the *Ursula K. Le Guin* stamp. The word “Station” or the abbreviation “STA” is required somewhere in the design because it will be a temporary station. Use of any image other than the following special pictorial image is prohibited.

Guidelines for Finalizing Ursula K. Le Guin Stamp Pictorial Postmark Art



To finalize the *Ursula K. Le Guin* stamp pictorial postmark art, insert the date, city, state, and ZIP Code™ of the physical location of your event adjacent to the stamp image. Overall dimensions of the pictorial postmark must not exceed 4 inches (horizontally) by 2 inches (vertically). Collectors prefer the dimensions 3-1/2 inches by 1 inch.

The Postal Service™ must make all special postmarks known to collectors through advance publicity in the *Postal Bulletin*. Therefore, all special dedication cancellations must be reported to Stamp Services 4 weeks before the event using PS Form 413, *Pictorial Postmark Announcement/Report*. To get a copy of the form, go to blue.usps.gov/formmgmt/forms/ps413.pdf.

How to Order the First-Day-of-Issue Postmark

Customers have 120 days to obtain the first-day-of-issue postmark by mail. They may purchase new stamps at their local Post Office™ or at The Postal Store® website at usps.com/shop. They must affix the stamps to envelopes of their choice, address the envelopes (to themselves or others), and place them in a larger envelope addressed to:

FDOI – Ursula K. Le Guin Stamp
 USPS Stamp Fulfillment Services
 8300 NE Underground Drive, Suite 300
 Kansas City, MO 64144-9900

After applying the first-day-of-issue postmark, the Postal Service will return the envelopes through the mail. There is no charge for the postmark up to a quantity of 50. There is a 5-cent charge for each additional postmark over 50. All orders must be postmarked by November 27, 2021.

How to Order First-Day Covers

The Postal Service also offers first-day covers for new stamp issues and Postal Service stationery items post-marked with the official first-day-of-issue cancellation. Each item has an individual catalog number and is offered in the *USA Philatelic* catalog and online at usps.com/shop. Customers may register to receive a free *USA Philatelic* catalog online at usps.com/philatelic.

Locally produced items are not authorized. Only merchandise that has been approved and assigned an item number by Headquarters Retail Marketing may be produced and sold.

Issue:	<i>Ursula K. Le Guin</i> Stamp
Item Number:	121400
Denomination & Type of Issue:	3-ounce rate, Non-denominated, Mail use
Format:	Pane of 20 (1 design)
Series:	<i>Literary Arts</i> (33rd in a series)
Issue Date & City:	July 27, 2021, Portland, OR 97208
Art Director:	Antonio Alcalá, Alexandria, VA
Designer:	Antonio Alcalá, Alexandria, VA
Artist:	Donato Giancola, Brooklyn, NY
Modeler:	Joseph Sheeran
Manufacturing Process:	Offset, Microprint "USPS"
Printer:	Ashton Potter (USA) Ltd (APU)
Press Type:	Muller A76
Stamps per Pane:	20
Print Quantity:	10,000,000 stamps
Paper Type:	Nonphosphored Type III, Block Tag
Adhesive Type:	Pressure-sensitive
Colors:	Black, Cyan, Magenta, Yellow
Stamp Orientation:	Horizontal
Image Area (w x h):	1.42 x 0.84 in. / 36.068 x 21.336 mm
Overall Size (w x h):	1.56 x 0.98 in. / 39.624 x 24.892 mm
Full Pane Size (w x h):	7.24 x 5.92 in. / 183.896 x 150.368 mm
Plate Size:	240 stamps per revolution
Plate Number:	"P" followed by four (4) single digits in two corners
Marginal Markings:	
Front:	Header: <i>Literary Arts</i> – 33rd in a series • Plate number in bottom two corners
Back:	©2021 USPS • USPS logo • 2 barcodes (121400) • Plate position diagram (6) • Promotional text

– Stamp Services,
Marketing, 6-17-21

Stamp Announcement 21-23: Raven Story Stamp



©2020 USPS

On July 30, 2021, in Juneau, AK, the United States Postal Service® will issue the *Raven Story* stamp (Forever® priced at the First-Class Mail® rate) in one design, in a pressure-sensitive adhesive (PSA) pane of 20 stamps (Item 478000). This stamp will go on sale nationwide July 30, 2021, and must not be sold or canceled before the first-day-of-issue.

Merging traditional artwork with modern design touches, this stamp depicts one of many stories about Raven, a figure of great significance to the Indigenous people of the northern Northwest Coast, part of the area that ranges from Southeast Alaska through coastal British Columbia and south into Washington state. Among the cultures of the region, the raven plays an essential role in many traditional tales, including stories about the creation of the world. Inspired by the traditional story of Raven setting free the sun, the moon, and the stars, Tlingit/Athabascan artist Rico Worl depicts Raven just as he escapes from his human family and begins to transform back into his bird form. To create the stamp art, Worl used formline, the traditional design style of the Indigenous people of the northern Northwest Coast. Antonio Alcalá served as art director.

Availability to Post Offices: Item 478000, Raven Story (Forever Priced at the First-Class Mail Rate) PSA Pane of 20 Stamps

Stamp Fulfillment Services will not make an automatic push distribution to Post Offices. Post Offices may begin ordering stamps before the first-day-of-issue through SFS Web at sfsweb.usps.gov.

How to Order the First-Day-of-Issue Postmark

Customers have 120 days to obtain the first-day-of-issue postmark by mail. They may purchase new stamps at their local Post Office™ or at The Postal Store® website at usps.com/shop. They must affix the stamps to envelopes

of their choice, address the envelopes (to themselves or others), and place them in a larger envelope addressed to:

FD01 – Raven Story Stamp
 USPS Stamp Fulfillment Services
 8300 NE Underground Drive, Suite 300
 Kansas City, MO 64144-9900

After applying the first-day-of-issue postmark, the Postal Service will return the envelopes through the mail. There is no charge for the postmark up to a quantity of 50. There is a 5-cent charge for each additional postmark over 50. All orders must be postmarked by November 30, 2021.

How to Order First-Day Covers

The Postal Service also offers first-day covers for new stamp issues and Postal Service stationery items postmarked with the official first-day-of-issue cancellation. Each item has an individual catalog number and is offered in the *USA Philatelic* catalog and online at usps.com/shop. Customers may register to receive a free *USA Philatelic* catalog online at usps.com/philatelic.

Locally produced items are not authorized. Only merchandise that has been approved and assigned an item number by Headquarters Retail Marketing may be produced and sold.

Issue:	<i>Raven Story</i> Stamp
Item Number:	478000
Denomination & Type of Issue:	First-Class Mail Forever
Format:	Pane of 20 (1 design)
Series:	N/A
Issue Date & City:	July 30, 2021, Juneau, AK 99801
Art Director:	Antonio Alcalá, Alexandria, VA
Designer:	Antonio Alcalá, Alexandria, VA
Artist:	Rico Worl, Juneau, AK
Modeler:	Sandra Lane / Michelle Finn
Manufacturing Process:	Flexographic, Foil Stamping, Microprint
Printer:	Banknote Corporation of America
Press Type:	Gallus RCS
Stamps per Pane:	20
Print Quantity:	18,000,000 stamps
Paper Type:	Phosphor, Block Tag
Adhesive Type:	Pressure-sensitive
Colors:	Black, Grey PMS 429, Kurz Luxor 220 Gold
Stamp Orientation:	Horizontal
Image Area (w x h):	1.42 x 0.84 in. / 36.068 x 21.336 mm
Overall Size (w x h):	1.56 x 0.98 in. / 39.624 x 24.892 mm
Full Pane Size (w x h):	7.24 x 6.23 in. / 183.896 x 158.242 mm
Press Sheets Size (w x h):	12.71 x 21.71 in. / 322.834 X 551.4334 mm
Plate Size:	120 stamps per revolution
Plate Numbers:	"B" followed by two (2) single digits in bottom two corners
Marginal Markings:	
Front:	Header: Raven Story • Plate number in bottom two corners
Back:	©2020 USPS • USPS logo • 2 barcodes (478000) • Plate position diagram (6) • Promotional text

Pictorial Postmarks Announcement

As a community service, the Postal Service™ offers pictorial postmarks to commemorate local events celebrated in communities throughout the nation. A list of events for which pictorial postmarks are authorized appears on the following pages. The sponsor of the pictorial postmark appears in italics under the date. Also provided are illustrations of these postmarks.

People attending these local events may obtain the postmark in person at the temporary Post Office™ station established there. Those who cannot attend the event but who wish to obtain the postmark may submit a mail order request. Pictorial postmarks are available only for the dates indicated, and *requests must be postmarked no later than 30 days following the requested pictorial postmark date.*

All requests must include a stamped envelope or postcard bearing at least the minimum First-Class Mail® postage. Items submitted for postmark may not include

postage issued after the date of the requested postmark. Such items will be returned unserved.

Customers wishing to obtain a postmark must affix stamps to any envelope or postcard of their choice, address the envelope or postcard to themselves or others, insert a card of postcard thickness in envelopes for sturdiness, and tuck in the flap. Place the envelope or postcard in a larger envelope and address it to: Pictorial Postmarks, followed by the Name of the Station, Address, City, State, ZIP+4® Code, as listed next to the postmark.

Customers can also send stamped envelopes and postcards without addresses for postmark, as long as they supply a larger envelope with adequate postage and their return address. After applying the pictorial postmark, the Postal Service returns the items (with or without addresses) under addressed protective cover.

The following pictorial postmarks have been extended for 30 days:



June 11–13, 2021

Friends of Lewis and Clark State Park
Lewis and Clark State Park Station
Postmaster
PO Box 9998
Lyons, NE 68038-9998



June 12, 2021

Brookville Laurel Festival
Brookville Station
Postmaster
67 White Street
Brookville, PA 15825-9998



NORTH CAROLINA CIVIL WAR &
RECONSTRUCTION HISTORY CENTER
STATION
Fayetteville Arsenal Site
Dedication & Phase 2 Ground-breaking
June 18, 2021
Fayetteville, NC 28305

June 18, 2021

*North Carolina Civil War and
Reconstruction History
Center*
North Carolina Civil War
Reconstruction History
Center Station
Postmaster
301 Green Street, Suite 200
Fayetteville, NC 28301-
9998



June 18, 2021

Knoxville Public Library
Knoxville Public Library
100th Year Celebratory
Station
Postmaster
105 East Main Street
Knoxville, PA 16928-9998

June 25, 2021



*United States Fish and
Wildlife Service*

Duck Stamp Station
Stamp Fulfillment Services/
Cancellation Services
8300 NE Underground
Drive, Pillar 210
Kansas City, MO 64144-
9998



June 29, 2021

United States Postal Service
Lansing, MI Station
Postmaster
PO Box 9998
Lansing, MI 48924-9998

June 26–28, 2021



West Point Public Affairs

R Day Station
Postmaster
634 Swift Road
West Point, NY 10996-9998

— *Stamp Services,
Marketing, 6-17-21*

How to Order the First-Day-of-Issue Digital Color or Traditional Postmarks

Customers have 120 days to obtain the first-day-of-issue postmarks by mail. Each cover must have sufficient postage to meet First-Class Mail® requirements. Customers may purchase new stamps at their local Post Office™, by phone at 800-782-6724, or on The Postal Store® website at usps.com/shop.

Digital Color Postmarks

Only select stamp issues offer a digital color postmark. Customers may submit #6 or #10 envelopes constructed of paper rated as “laser safe.” The Postal Service™ recommends envelopes of 80-pound Accent Opaque, acid-free, 9/16-inch side seams with no glue on the flap. The maximum size of all digital color postmarks is 2 inches (vertically) by 4 inches (horizontally). Allow sufficient space on the envelope to accommodate the postmark. Do not use self-adhesive labels for addresses on the envelope. Two test envelopes must be included. There is a minimum of 10 envelopes at 50 cents per postmark required at the time of servicing. Customers must submit a check, money order, or credit card for payment.

The Postal Service reserves the right to not accept hand-painted and other cachet envelopes that are not compatible with our digital color postmark equipment. The Postal Service also reserves the right to substitute traditional black rubber postmarks if use of nonspecified envelopes results in poor image quality or damage to equipment.

Customers must affix the stamps to the envelopes and address them to themselves or others for return through the mail. Or, they may include an additional self-addressed return envelope, large enough to accommodate their canceled items, with sufficient postage affixed for return of

their postmarked items. Address customer requests for digital color postmarks to:

FDOI – (Name of Stamp Issue)
USPS Stamp Fulfillment Services
8300 NE Underground Drive, Suite 300
Kansas City, MO 64144-9900

After applying the first-day-of-issue postmark, the Postal Service will return the envelopes to the customer by U.S. Mail®.

Traditional Postmarks

Customers must affix the stamps to the envelopes and address them to themselves or others for return through the mail. Or, they may include an additional self-addressed return envelope, large enough to accommodate their canceled items, with sufficient postage affixed for return of their postmarked items. Address customer requests for traditional postmarks to:

FDOI – (Name of Stamp Issue)
USPS Stamp Fulfillment Services
8300 NE Underground Drive, Suite 300
Kansas City, MO 64144-9900

After applying the first-day-of-issue postmark, the Postal Service will return the envelopes to the customer by U.S. Mail™. There is no charge for the first 50 postmarks. There is a 5-cent charge for each additional postmark over 50. Customers must submit a check, money order, or credit card for payment.

Locally produced items are not authorized. Only merchandise that has been approved and assigned an item number by Headquarters Retail Marketing may be produced and sold.



Digital Color Pictorial

FDOI – Espresso Drinks Stamps

USPS Stamp Fulfillment Services
8300 NE Underground Drive, Suite 300
Kansas City, MO 64144-9900

August 9, 2021



Black and White Pictorial

FDOI – Espresso Drinks Stamps

USPS Stamp Fulfillment Services
8300 NE Underground Drive, Suite 300
Kansas City, MO 64144-9900

August 9, 2021



FDOI – Star Wars Droids Stamps

USPS Stamp Fulfillment Services
8300 NE Underground Drive, Suite 300
Kansas City, MO 64144-9900

September 4, 2021

Digital Color Pictorial



FDOI – Star Wars Droids Stamps

USPS Stamp Fulfillment Services
8300 NE Underground Drive, Suite 300
Kansas City, MO 64144-9900

September 4, 2021

Digital Color Pictorial



FDOI – Star Wars Droids Stamps

USPS Stamp Fulfillment Services
8300 NE Underground Drive, Suite 300
Kansas City, MO 64144-9900

September 4, 2021

Digital Color Pictorial



FDOI – Star Wars Droids Stamps

USPS Stamp Fulfillment Services
8300 NE Underground Drive, Suite 300
Kansas City, MO 64144-9900

September 4, 2021

Digital Color Pictorial



FDOI – Star Wars Droids Stamps

USPS Stamp Fulfillment Services
8300 NE Underground Drive, Suite 300
Kansas City, MO 64144-9900

September 4, 2021

Digital Color Pictorial



FDOI – Star Wars Droids Stamps

USPS Stamp Fulfillment Services
8300 NE Underground Drive, Suite 300
Kansas City, MO 64144-9900

September 4, 2021

Digital Color Pictorial



FDOI – Star Wars Droids Stamps

USPS Stamp Fulfillment Services
8300 NE Underground Drive, Suite 300
Kansas City, MO 64144-9900

September 4, 2021

Digital Color Pictorial



Digital Color Pictorial

FDOI – Star Wars Droids Stamps

USPS Stamp Fulfillment Services
8300 NE Underground Drive, Suite 300
Kansas City, MO 64144-9900

September 4, 2021



Digital Color Pictorial

FDOI – Star Wars Droids Stamps

USPS Stamp Fulfillment Services
8300 NE Underground Drive, Suite 300
Kansas City, MO 64144-9900

September 4, 2021



Digital Color Pictorial

FDOI – Star Wars Droids Stamps

USPS Stamp Fulfillment Services
8300 NE Underground Drive, Suite 300
Kansas City, MO 64144-9900

September 4, 2021



Black and White Pictorial

FDOI – Star Wars Droids Stamps

USPS Stamp Fulfillment Services
8300 NE Underground Drive, Suite 300
Kansas City, MO 64144-9900

September 4, 2021



Digital Color Pictorial

FDOI – Heritage Breeds Stamps

USPS Stamp Fulfillment Services
8300 NE Underground Drive, Suite 300
Kansas City, MO 64144-9900

September 17, 2021



Black and White Pictorial

FDOI – Heritage Breeds Stamps

USPS Stamp Fulfillment Services
8300 NE Underground Drive, Suite 300
Kansas City, MO 64144-9900

September 17, 2021



Digital Color Pictorial

FDOI – Go for Broke: Japanese American Soldiers of WWII

USPS Stamp Fulfillment Services
8300 NE Underground Drive, Suite 300
Kansas City, MO 64144-9900

October 3, 2021



FDOI – Go for Broke: Japanese American Soldiers of WWII
USPS Stamp Fulfillment Services
8300 NE Underground Drive, Suite 300
Kansas City, MO 64144-9900

October 3, 2021

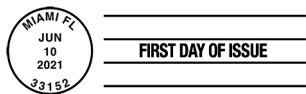
Black and White Pictorial



FDOI – Emilio Sanchez Stamps
USPS Stamp Fulfillment Services
8300 NE Underground Drive, Suite 300
Kansas City, MO 64144-9900

October 10, 2021

Digital Color Pictorial



FDOI – Emilio Sanchez Stamps
USPS Stamp Fulfillment Services
8300 NE Underground Drive, Suite 300
Kansas City, MO 64144-9900

October 10, 2021

Black and White Pictorial



FDOI – Sun Science Stamps
USPS Stamp Fulfillment Services
8300 NE Underground Drive, Suite 300
Kansas City, MO 64144-9900

October 18, 2021

Digital Color Pictorial



FDOI – Sun Science Stamps
USPS Stamp Fulfillment Services
8300 NE Underground Drive, Suite 300
Kansas City, MO 64144-9900

October 18, 2021

Black and White Pictorial



FDOI – Tap Dance Stamps
USPS Stamp Fulfillment Services
8300 NE Underground Drive, Suite 300
Kansas City, MO 64144-9900

November 10, 2021

Digital Color Pictorial



FDOI – Tap Dance Stamps
USPS Stamp Fulfillment Services
8300 NE Underground Drive, Suite 300
Kansas City, MO 64144-9900

November 10, 2021

Black and White Pictorial



Digital Color Pictorial

FDOI – Yogi Berra Stamp

USPS Stamp Fulfillment Services
8300 NE Underground Drive, Suite 300
Kansas City, MO 64144-9900

October 24, 2021



Black and White Pictorial

FDOI – Yogi Berra Stamp

USPS Stamp Fulfillment Services
8300 NE Underground Drive, Suite 300
Kansas City, MO 64144-9900

October 24, 2021



Digital Color Pictorial

FDOI – Mystery Message Stamp

USPS Stamp Fulfillment Services
8300 NE Underground Drive, Suite 300
Kansas City, MO 64144-9900

November 14, 2021



Black and White Pictorial

FDOI – Mystery Message Stamp

USPS Stamp Fulfillment Services
8300 NE Underground Drive, Suite 300
Kansas City, MO 64144-9900

November 14, 2021

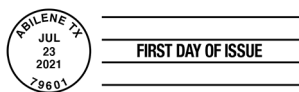


Digital Color Pictorial

FDOI – Western Wear Stamps

USPS Stamp Fulfillment Services
8300 NE Underground Drive, Suite 300
Kansas City, MO 64144-9900

November 23, 2021



Black and White Pictorial

FDOI – Western Wear Stamps

USPS Stamp Fulfillment Services
8300 NE Underground Drive, Suite 300
Kansas City, MO 64144-9900

November 23, 2021

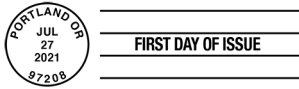


Digital Color Pictorial

FDOI – Ursula K. Le Guin Stamp

USPS Stamp Fulfillment Services
8300 NE Underground Drive, Suite 300
Kansas City, MO 64144-9900

November 27, 2021



FDOI – Ursula K. Le Guin Stamp

USPS Stamp Fulfillment Services
8300 NE Underground Drive, Suite 300
Kansas City, MO 64144-9900

November 27, 2021

Black and White Pictorial



FDOI – Raven Story Stamp

USPS Stamp Fulfillment Services
8300 NE Underground Drive, Suite 300
Kansas City, MO 64144-9900

November 30, 2021

Digital Color Pictorial



FDOI – Raven Story Stamp

USPS Stamp Fulfillment Services
8300 NE Underground Drive, Suite 300
Kansas City, MO 64144-9900

November 30, 2021

Black and White Pictorial

475 L'ENFANT PLAZA SW
WASHINGTON DC 20260-5540

First-Class Mail
Postage & Fees Paid
USPS
Permit No. G-10

USPS® Features *Heritage Breeds* Forever® Stamps



Mulefoot Hog
USA / FOREVER



Wyandotte Chicken
USA / FOREVER



Milking Devon Cow
USA / FOREVER



American Cream Draft Horse
USA / FOREVER



Cotton Patch Goose
USA / FOREVER



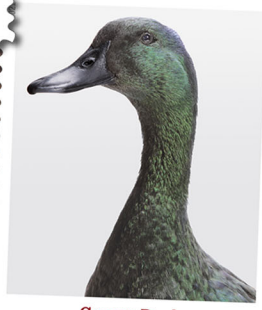
San Clemente Island Goat
USA / FOREVER



Narragansett Turkey
USA / FOREVER



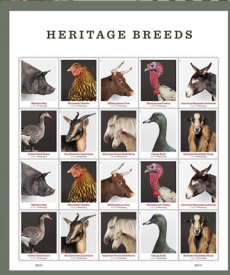
American Mammoth Jackstock
USA / FOREVER



Cayuga Duck
USA / FOREVER



Barbados Blackbelly Sheep
USA / FOREVER



On Sale
Nationwide:
May 17, 2021
Sold as a full pane.