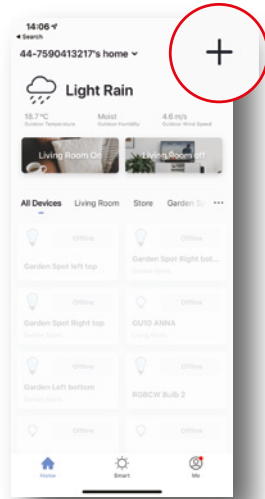
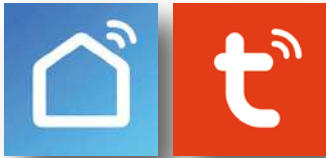


## Smart WIFI Blind Motor

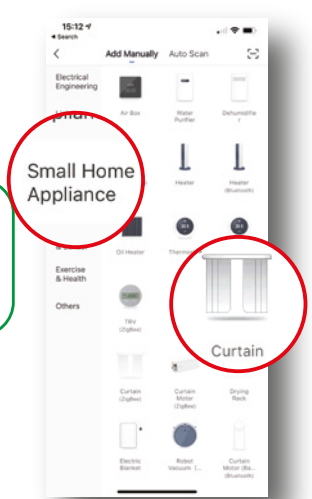
### Method 1: Instructions for pairing with Smart Life/Tuya

Please note that you need to pair each device **one at a time**. Please ensure that your WIFI connection is on **2.4 GHz**

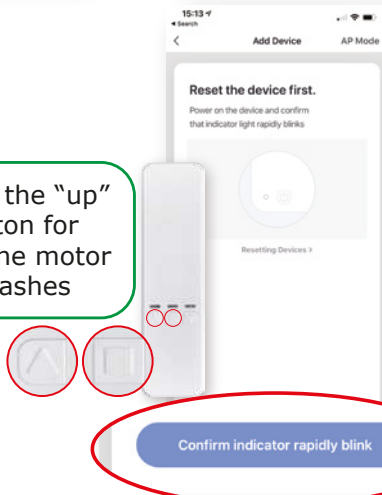
**1** Download and register an account on the Smart Life or Tuya App. Then select "+".



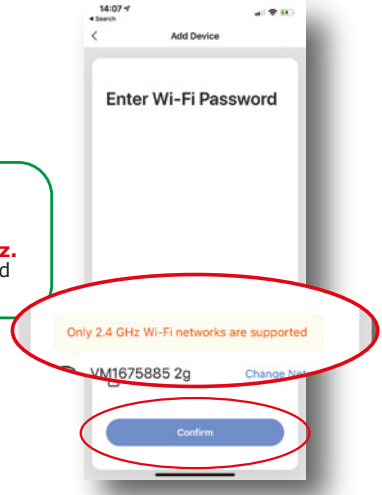
**2** Select "Small Home Appliance" and then scroll down and select "Curtain".



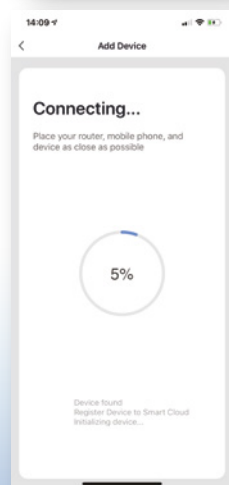
**3** Press and hold the "up" and "stop" button for 6 seconds on the motor until the LED flashes



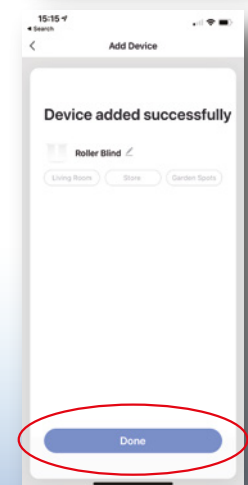
**4** Enter your WIFI credentials to connect to your home network. Please ensure that the WIFI network is **2.4 GHz**. Please contact us if you need assistance.



**5** Now wait until the device is discovered.



**6** Once the device is discovered, rename it and Select "Done".



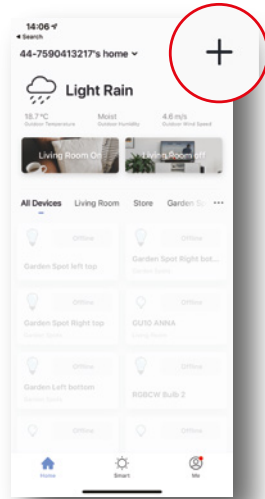
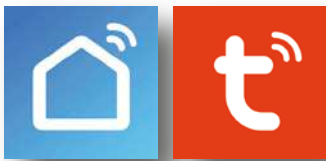
For further information, please contact us and we'll be happy to assist you.

## Smart WIFI Blind Motor

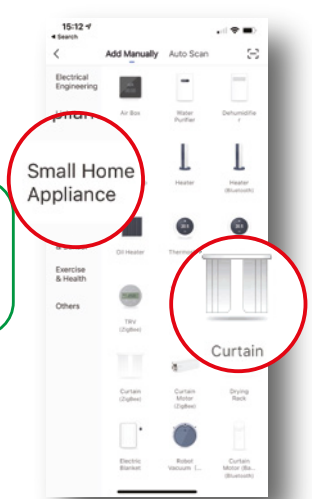
### Method 2: Instructions for pairing with Smart Life/Tuya

Please note that you need to pair each device **one at a time**. Please ensure that your WIFI connection is on **2.4 GHz**

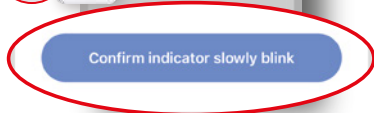
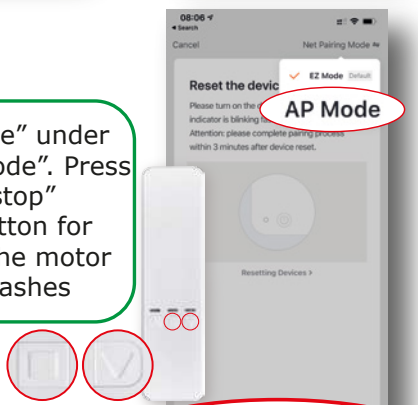
**1** Download and register an account on the Smart Life or Tuya App. Then select "+".



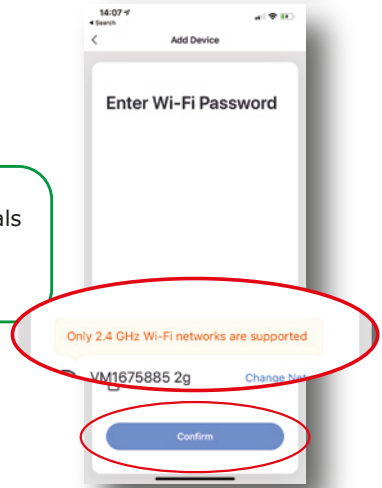
**2** Select "Small Home Appliance" and then scroll down and select "Curtain".



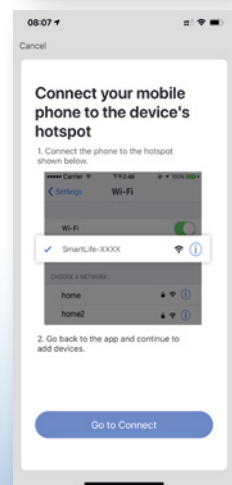
**3** Select "AP Mode" under "Net Pairing Mode". Press and hold the "stop" and "down" button for 6 seconds on the motor until the LED flashes



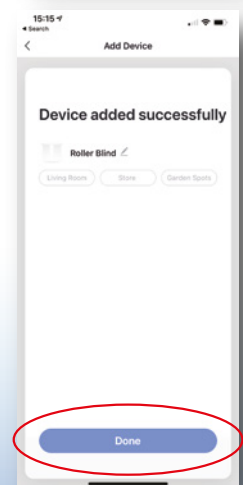
**4** Enter your WIFI credentials to connect to your home network.



**5** Select "Go to Connect" and then select "SmartLife-XXXX" in your device's WIFI settings. Finally go back to the app to continue



**6** Once the device has finished connecting and is discovered, rename it and select "Done".



For further information, please contact us and we'll be happy to assist you.