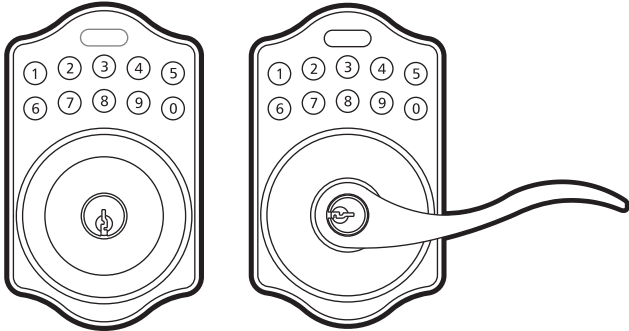


LOCKSTATE®



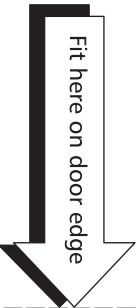
USER MANUAL



Attention : Please do not use the "electronic" screwdriver for installation.



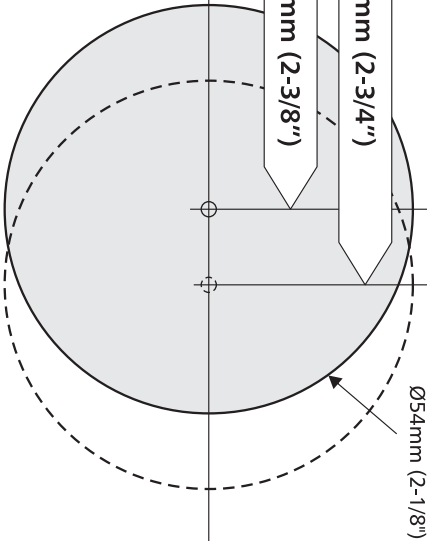
TEMPLATE



51 45 40 35
2" 1-3/4" 1-9/16" 1-3/8"

Mark Ø1" (25.4mm) hole at center of door edge.

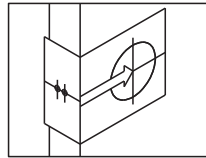
FOR BACKSET 70mm (2-3/4")
FOR BACKSET 60mm (2-3/8")



LockState

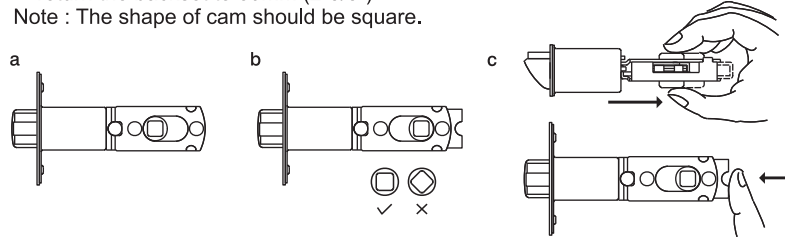
1325 S. Colorado Blvd. Suite 400 Denver, CO 80222
(877) 254-5625 www.LockState.com

WI-FI ELECTRONIC LEVER & KNOB INSTALLATION INSTRUCTION

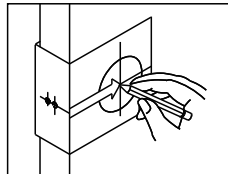


The BACKSET is the distance between the center of cross bore and edge bore of the door. Adjustable latch fits both BACKSET of 2-3/8" (60mm) and 2-3/4" (70mm). Please follow the steps shown below for BACKSET adjustment.

- The backset shown on the left is 60mm (2-3/8").
- Pull the cam toward right to extend the backset to 70mm (2-3/4").
- The backset shown in figure C is 70mm (2-3/4"). Pull the cam back to left will return the backset to 60mm (2-3/8").

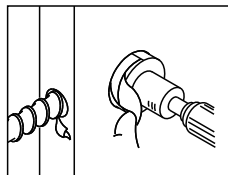


1. Mark The Door With Template



Select the height and backset as desired on the door face ; use the TEMPLATE as an indication to mark the center of the circle on the door face and the center of the door edge.

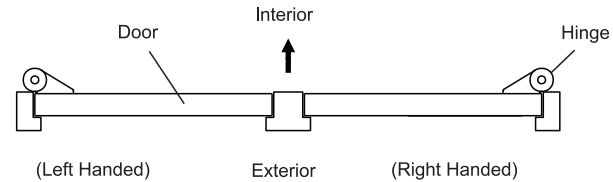
2. Drill Holes



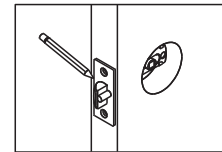
Using the marks as a guide to drill a hole Ø2-1/8" (54mm) through the door face for the lockset, then a hole of Ø1" (25.4mm) for latch.

3. Identify Door Handing

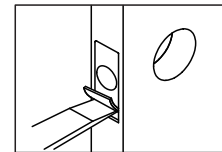
Face the door from outside, the door is left handed if the hinge is on the left-hand side of the door, whereas the door is right handed if the hinge is on the right-hand side of the door.



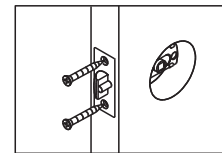
4. Install Latch



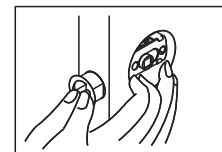
- Insert the latch and lay the faceplate against the door edge. Use a pencil to mark it's perimeter, then take out the latch.



- Chisel out the portion you've marked with pencil for about 4mm (5/32") deep. Score the area within the borders as clearly and precisely as possible. Ensure the plate can fit flush with the door edge surface.

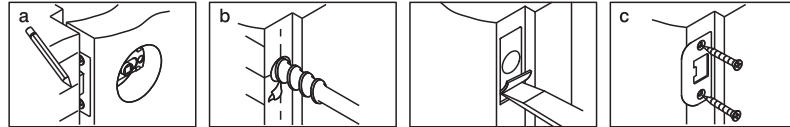


- Insert the latch and tighten it with screws. Be sure the holes for thru-bolts (next to the adjustable cam) should be horizontally aligned.



- There is no necessary to chisel the door edge for the faceplate installation if you use the drive-in latch. You may install it into the edge bore directly, but be sure the bevel should face the outside assembly.

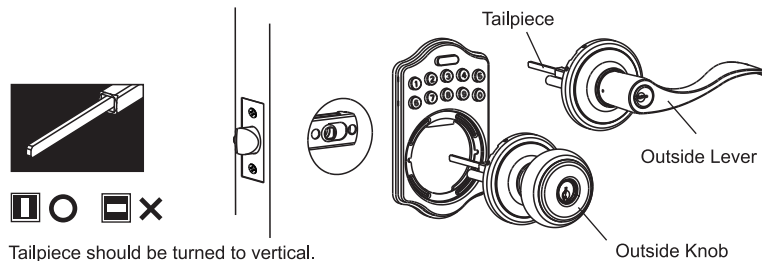
5. Install Strike



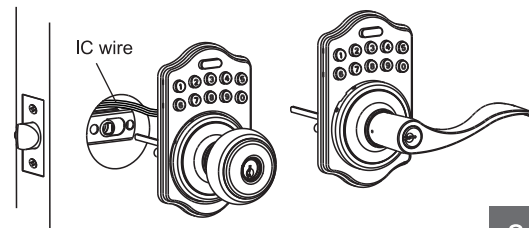
- Half-close the door to lay the latchbolt against the door frame. Mark the position of faceplate as an indication. Place the strike against the door frame and mark its perimeter. Be sure the center of strike is perfectly aligned with the center of faceplate.
- Drill a $\varnothing 25.4\text{mm}$ (1") hole with 13mm (1/2") depth on the center of strike outline. Then use the chisel to scrape out the door frame for 1.6mm (1/16") deep within your pencil mark. Ensure to chisel deep enough to allow the strike lay flush with the frame surface.
- Insert the strike and tighten it with screws.
Note : please use "tapping screws" for metal door.

6. Install Keypad Assembly

- Place the leverset/knobset against keypad with tailpiece in vertical position inserted through cam of the latch.



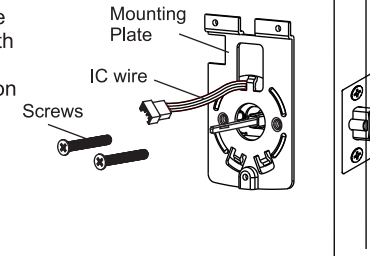
- Pass the IC wire over the latch to the interior side of door.



3

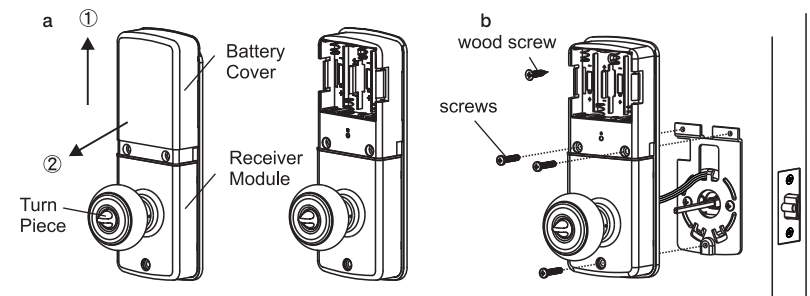
7. Install Inside Mounting Plate

Pass the IC wire through the wire hole on the mounting plate and fix the mounting plate with screws. If outside lock assembly is lopsided, please loosen the screws to adjust its position and tighten the screws again.

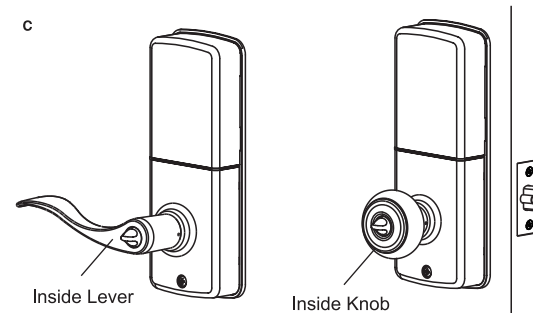


8. Install Receiver Module

- Remove the battery cover (push it up and pull it out).
- Connect the IC wire and ensure the turn piece is horizontal, so that the tailpiece is able to engaged with the inside lever/knob. Then attach receiver module to the door with screws. It's optional to use the attached wood screw.
(Wood screw only for wood door)



- Insert 4 (AA) 1.5V alkaline batteries and put the battery cover back to the receiver module.



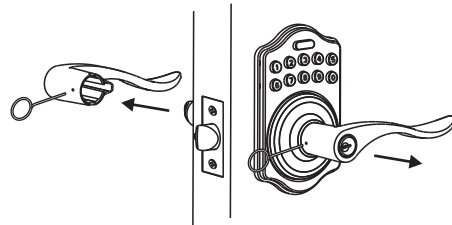
4

9. Change Lever Handing

a. Be sure the levers are unlocked.

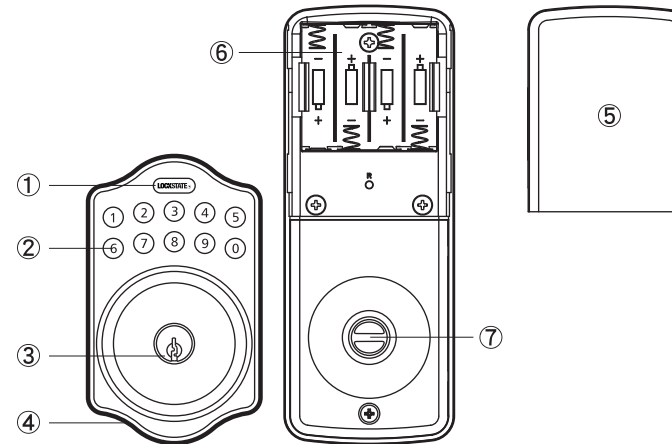
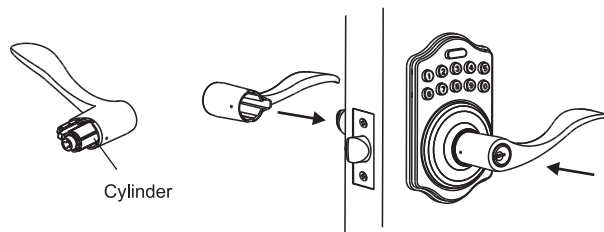
Insert the provided pin wrench into the small hole on the neck of lever and apply pressure to depress the catch and pull out the lever from the stem.

Follow the same steps to remove interior lever and exchange the position of inside and outside levers.



b. Remove the cylinder from lever and insert it into opposite lever.

Then install the levers and make sure the small hole on the neck of lever aligns over the catch perfectly. Rotate the levers to see if it operates well.



① Programming Button

Programming Button is for entering codes, clearing errors and setting function. It's also a lock button.

② Number Buttons

Input the user codes, each user code is 4-10 digits in length.

③ Cylinder

Lock/Unlock the lockset from exterior.

④ Gasket

Prevent water permeating into lockset.

⑤ Battery Lid

Slide the lid to change the batteries.

⑥ Battery Holder

Four AA (1.5V) Alkaline batteries.

⑦ Turn-Button

Lock/Unlock the lockset from interior

■ Programing Your Lock

1.Default Settings

1. The default User Code on the lock is 1234
2. The default Programing Code (PC) on the lock is 12345678
3. Please change both of these codes when first setting up the lock for security purposes.
This can either be done through keypad programming
(refer to Keypad Programming Functions section).

2.Set Lock Handling (Deadbolt Lock Only)

IMPORTANT: Before programming anything else on your Deadbolt Lock, you must first set the handing (whether your lock is on the right or left side of your door). To do this, follow these steps:

1. Put your lock in the **locked** position with the deadbolt fully extended by turning the thumb turn.
2. Enter the following on the keypad: [Programming Code] + 141 + LockState Button
3. You will see 2 green flashes and hear two beeps if successful

Note: For the lever lock, you do not need to perform this operation.

3.Connect Your Lock to the Internet& Login to Device Web Manager

Your lock has a built in Wi-Fi chip that allows you to program and control your lock from the internet. Connecting your lock to the internet is required for remote operation and other advanced features such as temporary guest codes, schedules, rules & alerts. However, connection to the internet is not required for the lock to operate. In fact, all programming enabled on the lock will continue to operate if your internet connection is interrupted.

To connect your lock to the internet via your Wi-Fi router and to login to your online Device Management account, please refer to the Internet Connection Setup Guide provided separately with your lock.

4. Initial Lock Programming

Programming your lock can either be done through your online account on the Device Web Management portal (refer to the Internet Connection Setup Guide) or on the keypad of the lock. Several of the programming functions that are available online are not available via Keypad Programming (creating guest codes, schedules, alerts, etc.). However, common functions such as adding or deleting User Codes can also be done through Keypad Programming.

For instructions on programming via your keypad, please refer to the Keyad Programming Functions in the next section.

■ Keypad Programming Functions

Auto-detect lock handing (Deadbolt Lock Only)

Enter PC → 141 → **LOCKSTATE®**

Note : If you have a lever lock you do not need to run this operation. For deadbolt locks, please run the door-handing identifying before doing anything else on your lock. Put your lock in the LOCKED position before running this function.

Change program code

Enter PC → 100 → **new PC** → **LOCKSTATE®**

Add user code

Enter PC → 110 → **User code** → **LOCKSTATE®**

Note : Up to 250 sets of User Code can be saved. User Code should be 4-10 digits in length.

Delete single user code

Enter PC → 120 → **User code** → **LOCKSTATE®**

Delete all user code

Enter PC → 131 → **LOCKSTATE®**

Note: You will not be able to unlock the door from the keypad or through your online account if no codes exist in the lock. You will have to add a new code to unlock your door from the keypad or online.

Disable all user code

Enter PC → 150 → **LOCKSTATE®**

Note: This function will provide privacy if you want to ensure no active codes can unlock the door. This will not delete codes, just make them inactive until you enable them again (below).

Enable all user code

Enter PC → 151 → LOCKSTATE®

Mute Keypad

Enter PC → 160 → LOCKSTATE®

Un-mute Keypad

Enter PC → 161 → LOCKSTATE®

Reset Wi-Fi connection

Enter PC → 000 → LOCKSTATE®

WPS

Enter PC → 001 → LOCKSTATE®

Note: If your router supports it (newer models usually do), WPS (WiFi Protected Setup) is a simple and secured way to connect a device to an existing network. After entering the keypad function for WPS, you will see 2 green beeps. Within 10 seconds, the lock will begin to flash green and beep for up to 2 minutes. Once you enable WPS on the lock, press the WPS button on your router to make the link. Refer to your routers manual for further instructions on WPS.

Check Online Connection Status

Enter PC → 005 → LOCKSTATE®

Note: If your lock is successfully connected to the internet, you will see 2 green flashes with 2 beeps. If not connected successfully, you will see 2 green flashes followed by 3 red flashes and beeps. If this occurs, reset your Wi-Fi connection go through the connection process again.

■ Detailed Lock Functionality

1. Battery

Four AA (1.5V) Alkaline batteries.

2. Low Battery

1. The batteries should be changed immediately once you see the LED flashes in red and hear 6 beeps when press the LockState button.
2. All settings are retained in the memory and will not be affected even if the battery is completely dead.
3. The lock still can be operated by key even there is a power outage.

3. LED Indicator

1. LED flashes green once when successful operation.
2. LED flashes green once when successful programming.
3. LED flashes red 3 times when there is an operation error.
4. LED flashes green 1 times when system has been restored to default setting.
5. LED flashes red 6 times if battery power is low.

4. Audio Indicator

1. 1 beep sound indicates a successful operation
2. 1 beep sound indicates a successful programming.
3. 3 beeps indicate an operation error (with red light).
4. 1 beep sound indicate that system has been restored to default setting.
5. 5 beeps when codes input error, the operation will stop for system protection. (Refer to 17)
6. 6 beeps indicate the power of battery is low.

5. Programming Code

1. The preset Programming Code is 12345678. Please change this to your own code when first time operation. This can be done on the keypad (refer to Keypad Programming Functions Section) or from your online account on the Device Web Manager.
2. There is only one Programming Code for function setting.
3. Programming Code is only for function setting, you can't unlock the door by pressing Programming Code.
4. Programming code has to be 8 digits in length.
5. Programming code can be changed anytime if needed.

6. User Code

1. The preset User Code is 1234. Please delete it and create your personal code when first time operation. This can be done on the keypad (refer to Keypad Programming Functions section) or from your online account on the Device Web Manager.
2. Up to 250 sets of User Codes can be saved.
3. User Codes are only used for unlocking the lock, without programming function.
4. User Codes can be 4-10 digits in length.
5. User Code can be deleted or changed anytime if needed.

7. Delete Individual User Code

1. User Codes can be deleted individually. You can reset the same User Code even it was deleted before.
2. User Codes can either be deleted on the keypad (refer to Keypad Programming Functions Section) or from your online account on the Device Web Manager.

8. Delete All User Codes At Once

1. All the User Codes can be deleted at once. You can still reset the same User Codes even they were deleted before.
2. Auto-locking and Keypad locking function will be invalid after deleting all User Codes and the lock can only be operated by key. All the electrical functions will be restored when recreate new User Codes.
6. To be able to unlock the door again, you will need to create new User Codes. This can be done on the keypad (refer to Keypad Programming Functions section) or from your online account on the Device Web Manager.

9. Temporarily Disable All User Codes

1. From the keypad only, you can choose to temporarily disable all active User Codes on the lock. This is meant to be a privacy function. This does not delete the User Codes, but just disables them until you enable them again.
2. Please refer to the Keypad Programming Functions section for instructions on temporarily disabling and enabling User Codes.

10. Reset Wi-Fi Connection

1. You can reset Wi-Fi connection on your lock if needed. This would likely be needed if you purchase a new router and need to enter the new SSID and password for your new router into your lock.
2. Follow the Internet Connection Setup Guide provided with your lock.

11. Unlocking the door

1. The door can be unlocked by key, entering a valid User Code on keypad from outside, by interior turn-piece, or from your online account.
2. To unlock the door on the keypad, enter the User Code and then press the LockState/Enter button.

12. Lock the door

The door will be locked by key, pressing the LockState/Enter button on the keypad from outside, by interior turn-piece, or from your online account.

13. Incomplete Door Closing / Opening

1. If the latch bolt is not extending/retracting completely when you try to lock/unlock the door via the keypad, you will see the LED flash red 3 times and hear 3 beeps (No alarm when it's in mute). The lock will reverse itself automatically in this case to the position it started in.
2. If the latch bolt gets stuck or can't extend/retract completely all the time, please check if the strike aligns with the latch bolt perfectly and adjust the strike to proper position. After long use of the door hinge, the latch bolt might get stuck easily because the door may have warped or shifted.

14. To Activate / Deactivate Auto-Locking Function

1. This function is for the lever lock only. When enabled, the door will automatically lock itself within 10seconds after unlocking.
2. This function is not enabled by default. You will have to enable it.
3. This function can only be enabled from your online account on the Device Web Manager.

15. Toggle Mute On/Off

1. By default, you will hear beep sounds when pressing the keypad, programming or operating errors. This can be turned off if needed.
2. LED Illumination still functions when it's in mute.
3. Motor operating sound cannot be muted.

16. Code Protection Function (Lockout)

Operation will be disabled if entering unauthorized codes over 5 times. The System will re-operate again after 30 sec.

17. Illumination

The LED Keypad will light up when pressing any button for ease of operation in the dark.

Remarks

1. We recommend using alkaline battery in order to stabilize the power supply.
2. Do not mix alkaline batteries with regular zinc-carbon ones or mixed brands.
3. Do not use any chemical liquid or lubricating oil with additives to clean the lock body, it will damage the surface or even mainboard.

■ Simple Troubleshooting

Situation 1 (Deadbolt Lock Only)

After the installation of the deadbolt lock and batteries, pressing the LockState button unlocks the door, and entering a User Code plus the LockState button locks the door (the opposite of what you would expect).

Causes : The door-handing identifying process is not yet complete.

Solutions : Please execute the door-handing identifying process as soon as the installation of the lockset is completed.

Situation 2

After the installation of the lockset and batteries, no responses when you press any button (no sounds are emitted, and the back light does not work).

Causes : It could be a problem caused by incorrect battery insertion or the improper connection of the cable.

Solutions : Check to see if the battery polarities have been reversed or if the battery is dead. If so, please re-install or change the battery. If not, please check if the cable is appropriately connected.

Situation 3

The lock is not showing up in my online account as connected to the internet.

Causes : It could be that the incorrect router password was entered during the internet connection process. Another possibility is that your router is offline and needs to be reset.

Solutions : Enter the keypad programming function for resetting Wi-Fi connection. This is [Enter PC] + 0 0 0 + [LockState Button].

Situation 4

Locking and unlocking from the keypad only works when the key is in the key cylinder.

Causes : The spindle that goes through the latch was installed in the wrong position.

Solutions : Make sure to install the lock with the key OUT of the cylinder. Also make sure that the spindle is in the horizontal position when threading through the latch.