

Decision Doc User Guide

Sept 2021

Table of Contents

Page 2: Getting Started

Page 3: The questionnaire (where you share upcoming health care usage)

Pages 4-5: Reading Your Report

Page 6: Support

- 1 Click on your company's unique link to go to Decision Doc, a secure online platform that will help you choose your health plan.

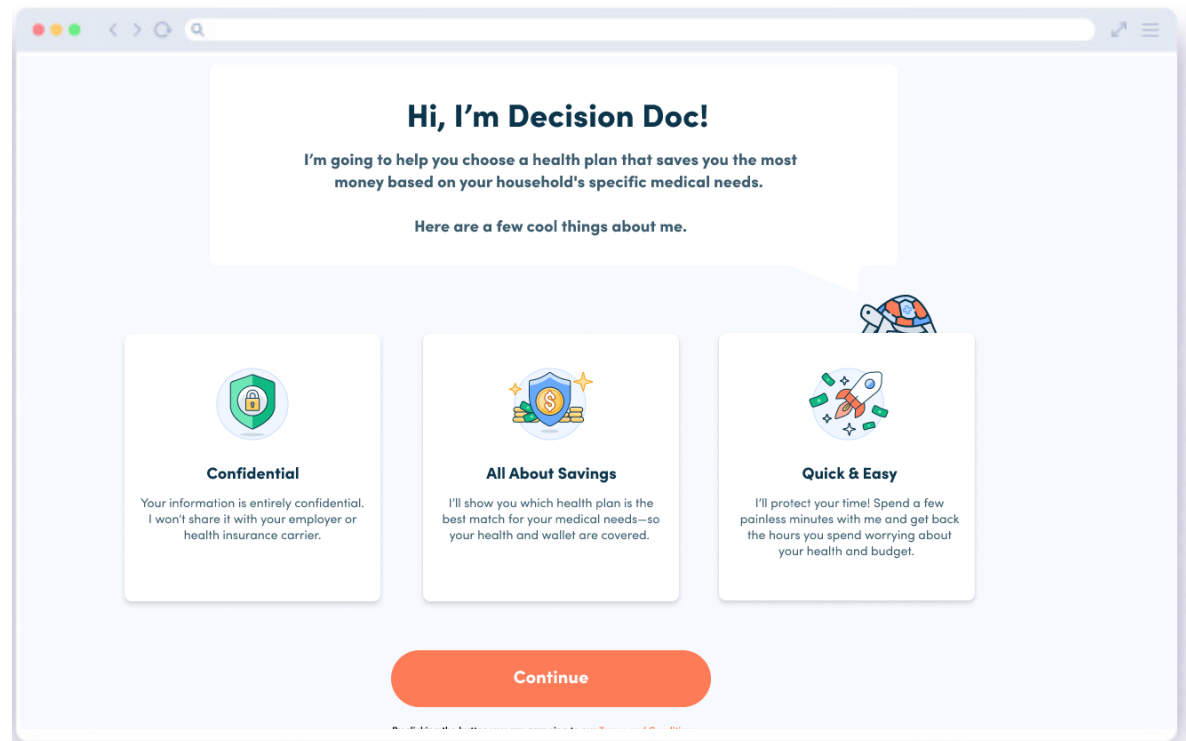
You will receive your secure link through emails from your HR team, as well as flyers with a QR code.

You can access Decision Doc on any device!

- 2 Share a little about yourself so we can pull up plan information specific to you.

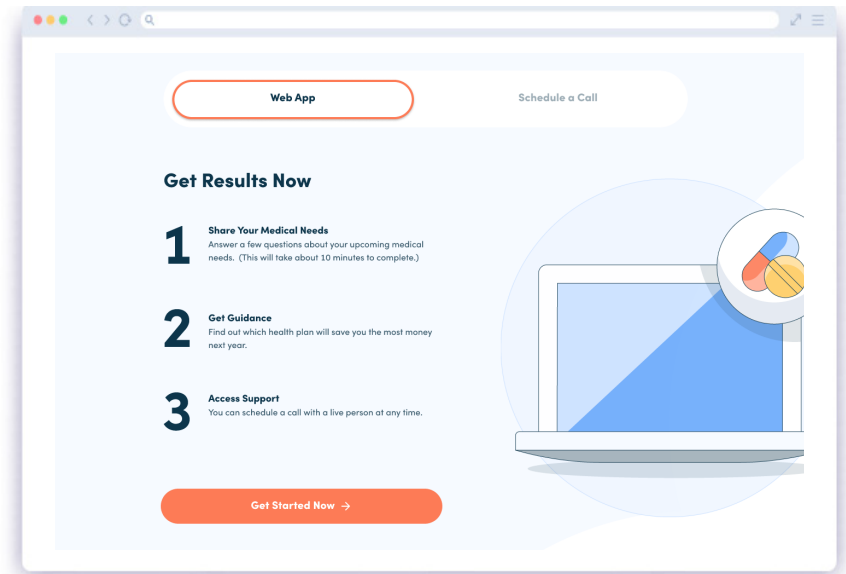
Do your best to enter your information exactly as your HR department may have it on file.

If you don't have a work email, enter your personal email here.



1 Choose whether you would like to answer questions about your upcoming healthcare usage online or over the phone.

Questions take 5-6 minutes online. If you choose the phone option, our analysts will call you directly.

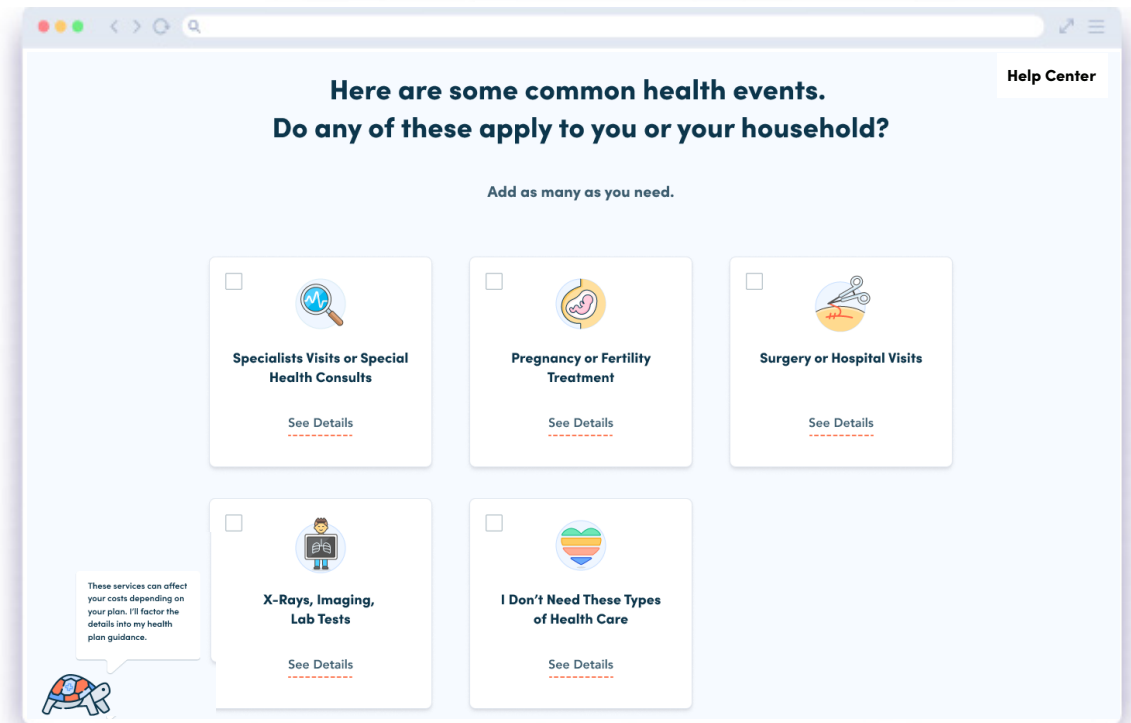


2 Take a questionnaire about your expected health care usage.

We'll ask about major health events, like surgeries and specialists, and routine care, like your prescriptions and PCP visits.

Questions if you stay online?

- Click "Help Center" to email support or schedule a call with an analyst.
- Don't know a term with a red dotted line? Click on the "glossary" button to view definitions and resources.
- **Theo the turtle** has helpful hints and resources



If your employer offers an HSA-eligible plan, we'll share your employer's contribution and ask whether and how much you'll contribute. This helps us give you accurate guidance!

See which health plan will save you the most money next year.

We highlight who's on the plan and the major factors contributing to costs.

View your health plan options ranked by:

- Total costs (how much we predict you will spend on health care over the year)
- Total savings (how much we predict you will save on health care over the year)
- The worst case scenario (the most you could spend on health care over the year)

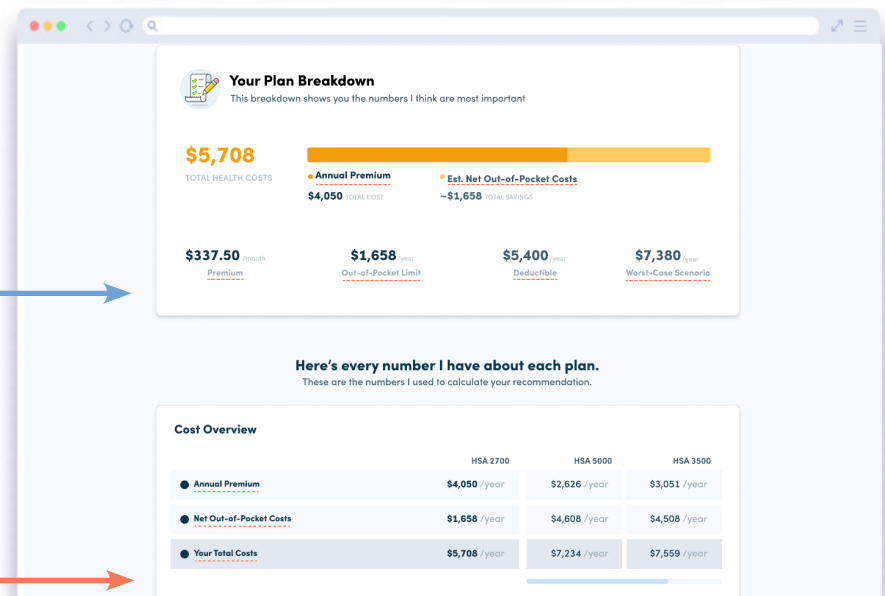
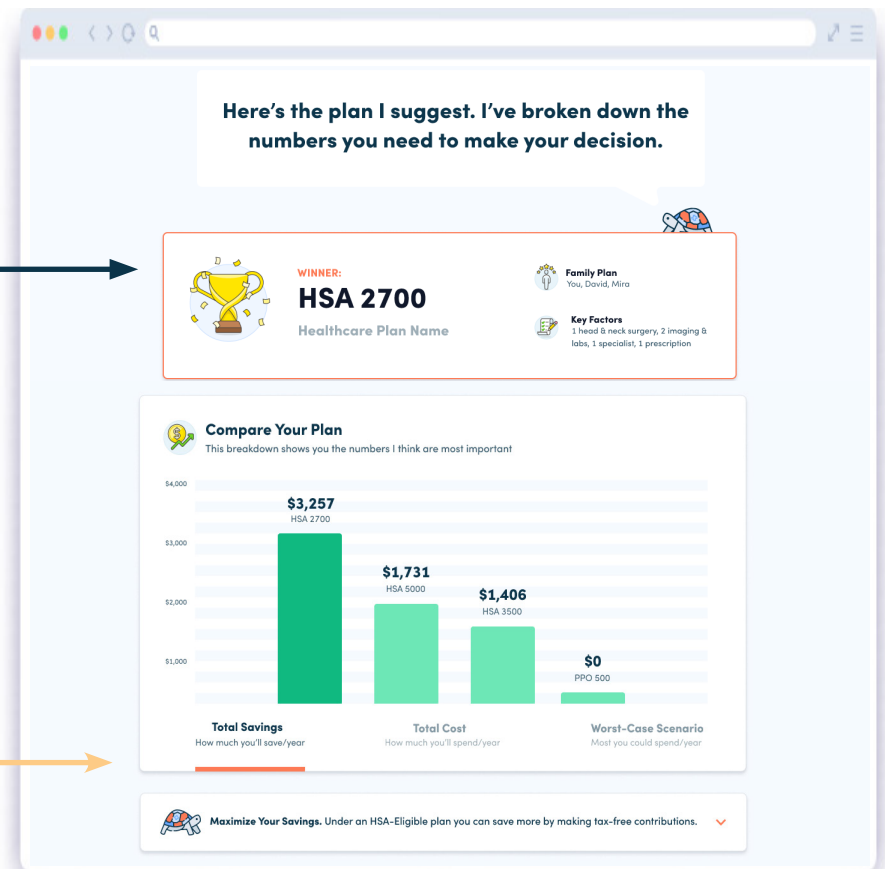
Click on the different titles below the bar graph to see each different view.

Understand how your health care costs will breakdown over the year for the winning plan:

- See how much of your health care costs go to premiums vs. out-of-pocket costs
- See your monthly premium, out-of-pocket limit and deductible
- See the most you could need to pay

See how your health care costs breakdown for each plan option:

- See how much of your health care costs go to premiums vs. out-of-pocket costs
- Compare these numbers for each plan option



Reading Your Report

Get more details on your plan options and a full breakdown of how we calculate your expected costs.

Schedule a call or email us with questions about your report.

Access resources.

Helpful hints:

- Download your report before you exit your window or restart the questionnaire!
- Keep an eye out for Theo turtle call-outs! Click on them for more information.

The screenshot shows a web application interface with the following elements:

- Plan Details** and **Cost Details** sections at the top.
- An **important message** section featuring a turtle icon and the text: "Here is an important message. It is usually tailored to the needs of each employer and their employees."
- Email Us** section: "Need some help? Email us anytime with questions about this estimate and one of our experts will get back to you." Includes an "Email Us" button and an envelope icon.
- Schedule a Call** section: "If you'd feel more comfortable going over your health estimate with an expert schedule a call." Includes a "Schedule a Call" button and a headset icon.
- Feeling Overwhelmed?** section: "Check out these free resources to get insights on HSAs, common questions, and more." Includes a "See all →" link and five resource cards:
 - HSA Retirement 101
 - How to Save in Health
 - Worst-Case Scenario Planning
 - How to Save for Health Care
 - RolloverHSAs
- Bottom navigation: "Download" button, "Take Questionnaire Again" button, and "Enroll in Plan" button.

Download your report to view later.

Take the questionnaire again.

Enroll in your health plan.

Questions about Decision Doc?

- **Email us:** Email questions@myhealthmath.com and include your name and employer
- **Check out our resource library:** View our FAQ: <https://myhealthmath.com/employee-faqs/>
- **Talk to us on the phone:** Your company should have sent you a unique link to access Decision Doc. Click on the link; when you get to Decision Doc, click on help center to schedule a call with our team.

