

1. About Creader VII+ / Creader VIII

Creader VIII features same appearance as Creader VII+. Here we only take Creader VII+ for example.



No.	Name	Descriptions
1	Power indicator	It will light up while Creader VII+ is energized.
2	Communication indicator	It will flash when Creader VII+ is communicating with ECU.
3	LCD	Indicates test results.
4		Move cursor up or down for selection.
		Move cursor left or right for selection; Or turn page up or down when more than one page is displayed.
		Confirms a selection (or action) from a menu list.
		Exit the current program or return to the previous screen; or confirm to display the selected datastream in Data Stream.
		To retrieve the DTCs in the database.
5	USB port	To connect on PC to upload data or upgrade your device.
6	TF card slot	Insert the TF card into it to read or write the data/file stored in TF card.
7	OBD-16 connector	To connect on vehicle's DLC(Data Link Connector) via diagnostic cable.

2. How to Update Creader VII+ / Creader VIII

Follow the steps described as below to proceed registration and update:

- Go to <http://mycar.x431.com/pad/landingPageIndexCrv.action> and click **Updating Tool Download** icon. See Figure 1.

Note: Creader VIII shares the same URL with Creader VII+.



Figure 1

- Download and install the Creader VII+ / Creader VIII Update Tool (only under Windows XP and Window 7 operating system) and launch the program when installed, a screen similar to Figure 2 will appear:



Figure 2

- In Figure 2, type in the Product Serial Number, which is located at the back of the Creader VII+ / Creader VIII.

2. How to Update Creader VII+ / Creader VIII (Cont'd)

- After the serial number is entered, click **Update** to jump to the registration page. Enter the following information and click **Submit** (refer to Figure 3).



Figure 3

(If you need the Register Code, please refer to steps 5~8.)

(If you have the Register Code, directly proceed to step 9.)

- The **Register Code** can be found in your Creader VII+ / Creader VIII. Connect one end of the supplied USB cord to Creader VII+ / Creader VIII, and the other end on the computer.
- After Creader VII+ / Creader VIII has powered up and entered the main menu screen, move the highlight bar on the **Help** icon (See Figure 4) and press the **OK** button.

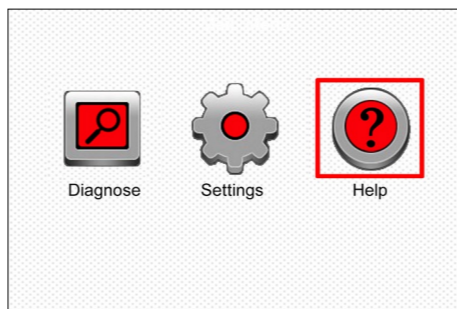


Figure 4

2. How to Update Creader VII+ / Creader VIII (Cont'd)

- Select **Tool Information** (refer to Figure 5) and press the **OK** button to enter.

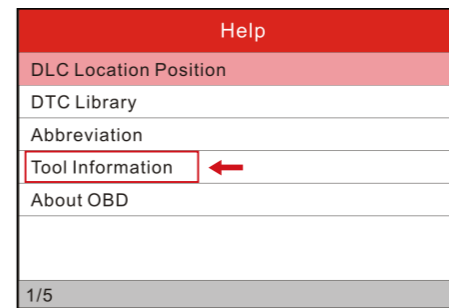


Figure 5

- The Register Code shown in Figure 6 is the Register Code needed in step 4.

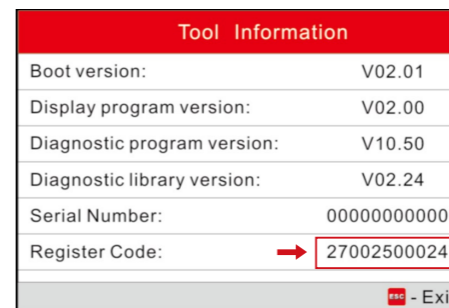


Figure 6

(Return to step 4 and input the **Register Code** and then proceed)

- Install the TF card from the tool into the supplied USB TF card adaptor and insert into the USB port of the computer.
- Reopen the Creader VII+ / Creader VIII update tool, select the updates you would like to perform or click "Select All", and then click **Download** to start downloading. See Figure 7.

2. How to Update Creader VII+ / Creader VIII (Cont'd)

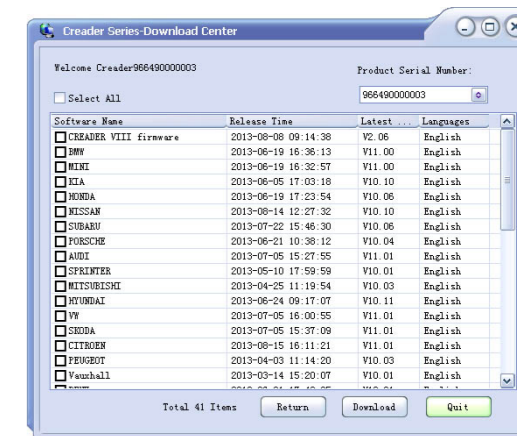


Figure 7

- Once all steps are complete, reinsert the TF card into the tool and power the tool via USB cable or via OBD II cable (one end to OBD II connector of Creader VII+ / Creader VIII and the other end on the vehicle's DLC). A dialog box (Note: If only diagnostic softwares are updated and no firmware packages are downloaded in Figure 7, this box will not appear) prompting you to upgrade will pop up on the screen (See Figure 8), select **OK** to proceed.

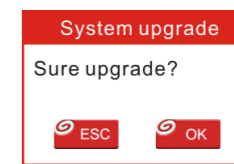


Figure 8

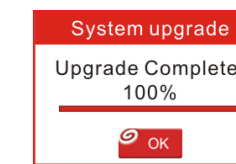


Figure 9

- The registration process is now complete, your Creader VII+ / Creader VIII is now ready for use (See Figure 9).

Note: All pictures illustrated here are for reference and demonstration purpose only and this **Quick Start Guide** is subject to change without prior notice.

一、认识Creader VII+ / Creader VIII

Creader VIII与Creader VII+外观相同。这里以Creader VII+为例进行讲解。



序号	名称	具体描述
1	电源指示灯	Creader VII+通电后将常亮。
2	通讯指示灯	Creader VII+与ECU进行通讯时，此灯闪烁。
3	显示屏	显示测试结果。
4		向上或向下选择。
		向左或向右选择；或者翻页。
		确认选择或执行。
		退出当前程序或返回至上一屏幕；在选择数据流选项时按此键进入所选的数据流。
4		退出当前程序或返回至上一屏幕；在选择数据流选项时按此键进入所选的数据流。
		从数据库中检索故障码。
5	USB端口	连接电脑进行数据上传或升级操作。
6	TF卡卡槽	将TF卡插入此卡槽中读取或写入储存在TF卡中的数据或文件。
7	OBD-16连接线束	用于连接设备与汽车诊断接头（DLC）。

二、如何升级Creader VII+ / Creader VIII

注册及升级流程如下：

1. 登录<http://mycar.x431.com/pad/landingPageIndexCrv.action>，然后点击“升级工具下载”图标，见图1所示：

注：Creader VIII与Creader VII+升级工具下载链接地址一样。



图1

2. 下载并安装Creader VII+ / Creader VIII升级工具（仅兼容Windows XP和Window 7系统）。安装完成后，运行此工具，见图2所示：



图2

3. 在图2中，输入产品序列号（此序列号位于Creader VII+ / Creader VIII机身背面）。

4. 输入完成后，点击“升级”进入注册页面（见图3），输入如下信

二、如何升级Creader VII+ / Creader VIII（续）

息，填写完成后，点击“提交”按钮。



图3

（如果您需要注册码，请参照第5~8步。）

5. 注册码可以在Creader VII+ / Creader VIII主机中找到，首先将USB线一端连接至Creader VII+ / Creader VIII上，另一端连接至电脑上。

6. 待Creader VII+ / Creader VIII进入主界面后，然后将反选条移至“帮助”图标上（见图4），然后按OK按钮。



图4

7. 选择“设备信息”，然后按OK按钮。见图5。

二、如何升级Creader VII+ / Creader VIII（续）



图5

8. 下图6中所示的注册码即为第4步中需要输入的注册码。



图6

（返回第4步输入注册码并继续。）

9. 将TF卡插入到TF卡读写器中，然后将读写器插入到电脑中。

10. 重新启动Creader VII+ / Creader VIII升级工具，选择需要下载的文件或点击“选择全部”，然后点击“下载”开始下载。见图7。

注：如用户只升级诊断软件，不升级固件，则无需勾选固件升级。如勾选固件升级，下载完固件升级包后，启动设备时，屏幕会提示“System upgrade”的对话框。见图8。如只是升级软件，则启动后不会出现此对话框。

二、如何升级Creader VII+ / Creader VIII（续）



图7

11. 下载完成后，将TF卡从TF读写器重拔出并重新插入到Creader VII+ / Creader VIII的TF插槽中，然后通过电脑USB线（一端连接至Creader VII+ / Creader VIII，另一端连接至电脑上）或车辆上的汽车诊断座（将Creader VII+ / Creader VIII的OBD II诊断接头连接至汽车的诊断座上）给Creader VII+ / Creader VIII供电，设备启动后，屏幕会提示是否升级对话框（见图8），选择OK按钮开始升级。

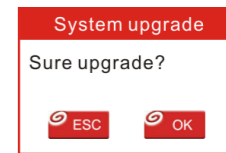


图8

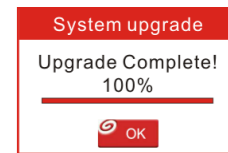


图9

12. 此时升级过程已完成！见图9。

注：此快速使用入门中所有图片仅用作参考和演示用途，请以实物为准。此外，因软件不断升级，此快速使用入门后续会不断更新，恕不另行通知。