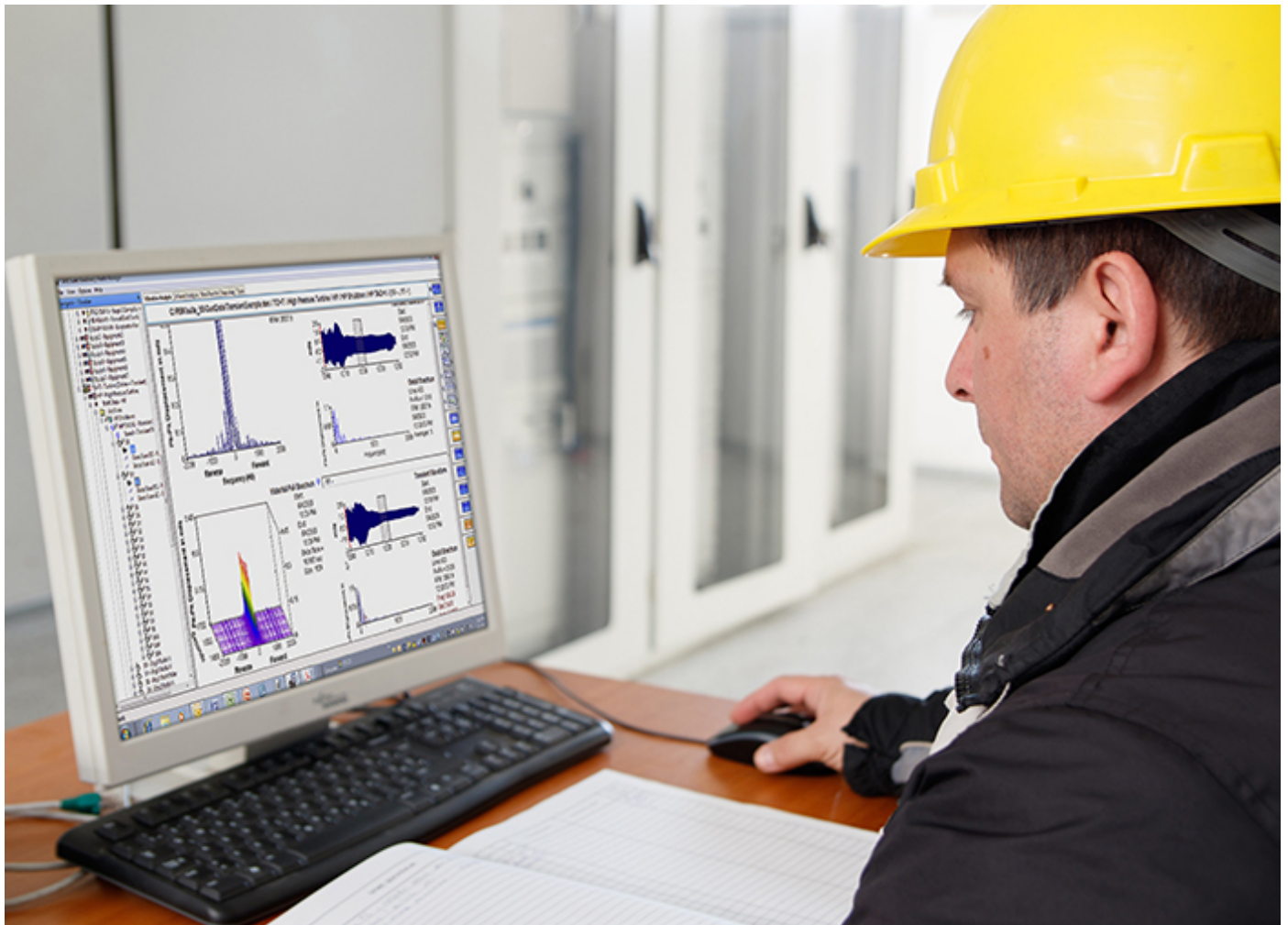


AMS Machinery Manager

Version 6.3 Software Installation Guide



Copyright

© 2019 by Emerson. All rights reserved.

No part of this publication may be reproduced, transmitted, transcribed, stored in a retrieval system, or translated into any language in any form by any means without the written permission of Emerson.

Disclaimer

This manual is provided for informational purposes. EMERSON MAKES NO WARRANTY OF ANY KIND WITH REGARD TO THIS MATERIAL, INCLUDING, BUT NOT LIMITED TO, THE IMPLIED WARRANTIES OF MERCHANTABILITY AND FITNESS FOR A PARTICULAR PURPOSE. Emerson shall not be liable for errors, omissions, or inconsistencies that may be contained herein or for incidental or consequential damages in connection with the furnishing, performance, or use of this material. Information in this document is subject to change without notice and does not represent a commitment on the part of Emerson. The information in this manual is not all-inclusive and cannot cover all unique situations.

Trademarks and Servicemarks

See <http://www.emerson.com/documents/automation/40816.pdf>.

All other marks are property of their respective owners.

Patents

The product(s) described in this manual are covered under existing and pending patents.

Contents

Chapter 1	Getting started	1
1.1	Customized installation media	1
1.2	Where to get help	1
1.3	Installation Types	2
1.4	Operating Requirements	8
Chapter 2	Standalone installation	10
2.1	Install AMS Machinery Manager	10
2.2	Launch AMS Machinery Manager	13
2.3	Update or repair the installation	13
Chapter 3	Network installation	15
3.1	Physical network installation overview	15
3.2	Cloud installation overview	16
3.3	Install the Network Server	17
3.4	Install the AMS Machinery Manager Client	21
3.5	Launch AMS Machinery Manager Client	22
3.6	Install a Secondary Database Server	23
3.7	Install an Online Server	24
3.8	Install Data Import Server and Data Import Client	25
3.9	Install Collaboration Tool	27
3.10	Update or install new features on the Network Server	28
Chapter 4	Additional installations	30
4.1	Install Machine History Viewer	30
4.2	Install AMS Standalone Data Transfer	34
4.3	Install AMS Machinery Manager ODBC Driver	34
4.4	Install AMS Machinery Manager CSI Data Provider	35
4.5	Install CSI USB drivers	41
Chapter 5	AMS Machinery Manager services	42
5.1	Primary server features and services	42
5.2	Secondary server features and services	42
5.3	Client installation features	43
Chapter 6	Configure network computer communication	44
6.1	Configure firewall settings	44
6.2	Service accounts	50
Appendices and reference		
Appendix A	File locations	53
Appendix B	Register AMS Machinery Manager	58
B.1	Register AMS Machinery Manager - Standalone system	58
B.2	Register AMS Machinery Manager - Network system	59
Appendix C	Update the Machinery Health Monitor firmware	61
C.1	Install the firmware on the FTP server	61

	C.2	Reboot the Machinery Health Monitor	62
	C.3	Check the firmware version in AMS Machinery Manager	62
Appendix D		Connect the AMS 2140 to the virtual host	64
Appendix E		Convert database schema	65

1 Getting started

Topics covered in this chapter:

- [Customized installation media](#)
- [Where to get help](#)
- [Installation Types](#)
- [Operating Requirements](#)

Thank you for choosing AMS Machinery Manager. Let's get started!

Your AMS Machinery Manager package includes:

- Quick Start Guide
- Software Installation DVD
- Manuals DVD

1.1 Customized installation media

Based on your order, the Software Installation DVD contains the following:

- Standalone (Single User) or Network installation
- AMS Machinery Manager technologies
- Number of licensed users

To add a technology or more licensed users, contact your Emerson Sales Representative.

1.2 Where to get help

AMS Machinery Manager Help

Launch AMS Machinery Manager and select Help from the main menu. The Help is also available on the Guardian website.

AMS Machinery Manager Manuals DVD

Your AMS Machinery Manager package includes a disc with user manuals in PDF format.

Software Registration

Phone: Toll free 888.367.3774, option 2 (U.S. and Canada)
+63.2.702.1111 (Rest of world)

Email: wwcs.custserv@emerson.com

Web: <http://www.emerson.com/machineryhealthreg>

Product Support

Emerson provides a variety of ways to reach your Product Support team to get the answers you need when you need them:

Phone	Toll free 800.833.8314 (U.S. and Canada) +1.512.832.3774 (Latin America) +63.2 702.1111 (Asia Pacific, Europe, and Middle East)
Email	ap-sms@emerson.com
Web	http://www.emerson.com/en-us/contact-us

To search for documentation, visit <http://www.emerson.com>.

To view toll free numbers for specific countries, visit <http://www.emersonprocess.com/technicalsupport>.

1.3 Installation Types

There are two main types of AMS Machinery Manager installations:

- Standalone (or Single-user standalone)
- Network (or Single-user network, Multiple-user network, and Microsoft Azure cloud installations).

1.3.1 Standalone installation

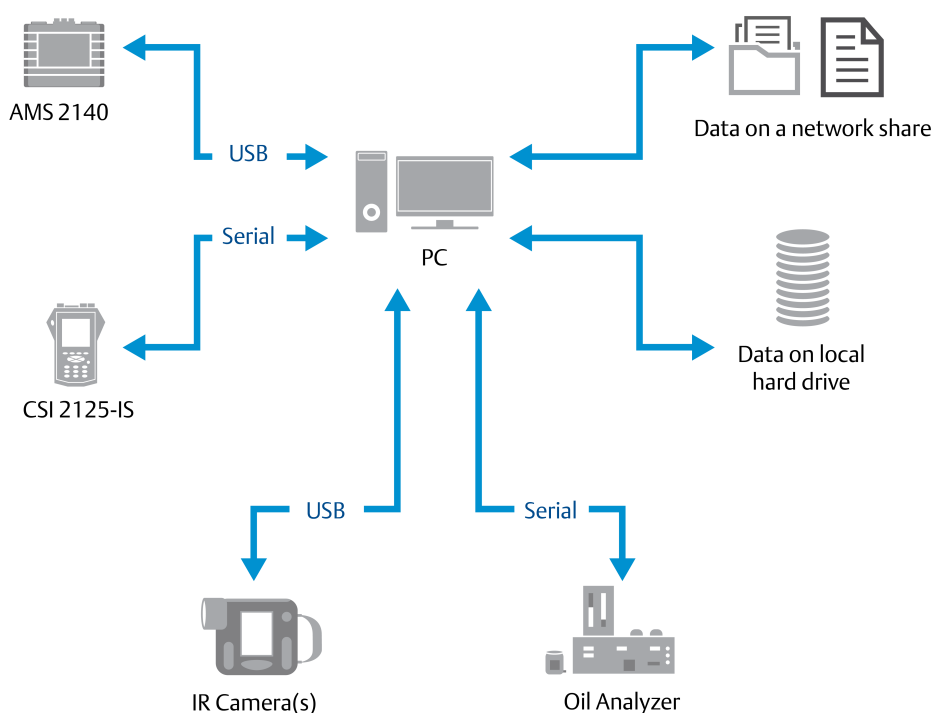
A standalone system allows you to use periodic technology with one computer and Machinery Health Analyzers. A standalone installation indicates you have a single copy of AMS Machinery Manager with a single serial number on one computer.

You can install these components:

- AMS Machinery Manager
- AMS Standalone Data Transfer (on a different computer)
- AMS Machinery Manager ODBC Driver
- AMS Machinery Manager Dashboard

Figure 1-1: Standalone system example

This example does not attempt to show all supported hardware options.



1.3.2 Network installations

A network system allows you to use online technology⁽¹⁾ and periodic technology. AMS Machinery Manager communicates with a Machinery Health Monitor using a network connection. A network system can be deployed on a local area network (LAN), a wide area network (WAN), or on a virtual host in the Microsoft Azure cloud.

When AMS Machinery Manager is on a physical network (LAN or WAN), you can install these components:

- AMS Machinery Manager
- Online Server
- Secondary Database Server
- Data Import Server
- AMS Machinery Manager Data Import Client
- AMS Machinery Manager Dashboard
- AMS Standalone Data Transfer (on a different computer)
- AMS Machinery Manager ODBC Driver

(1) Not supported in cloud installations.

- Machine History Viewer
- Collaboration Tool
- CSI Data Provider

When AMS Machinery Manager is in the Microsoft Azure cloud, you can install these components:

- AMS Machinery Manager
- AMS Machinery Manager Dashboard

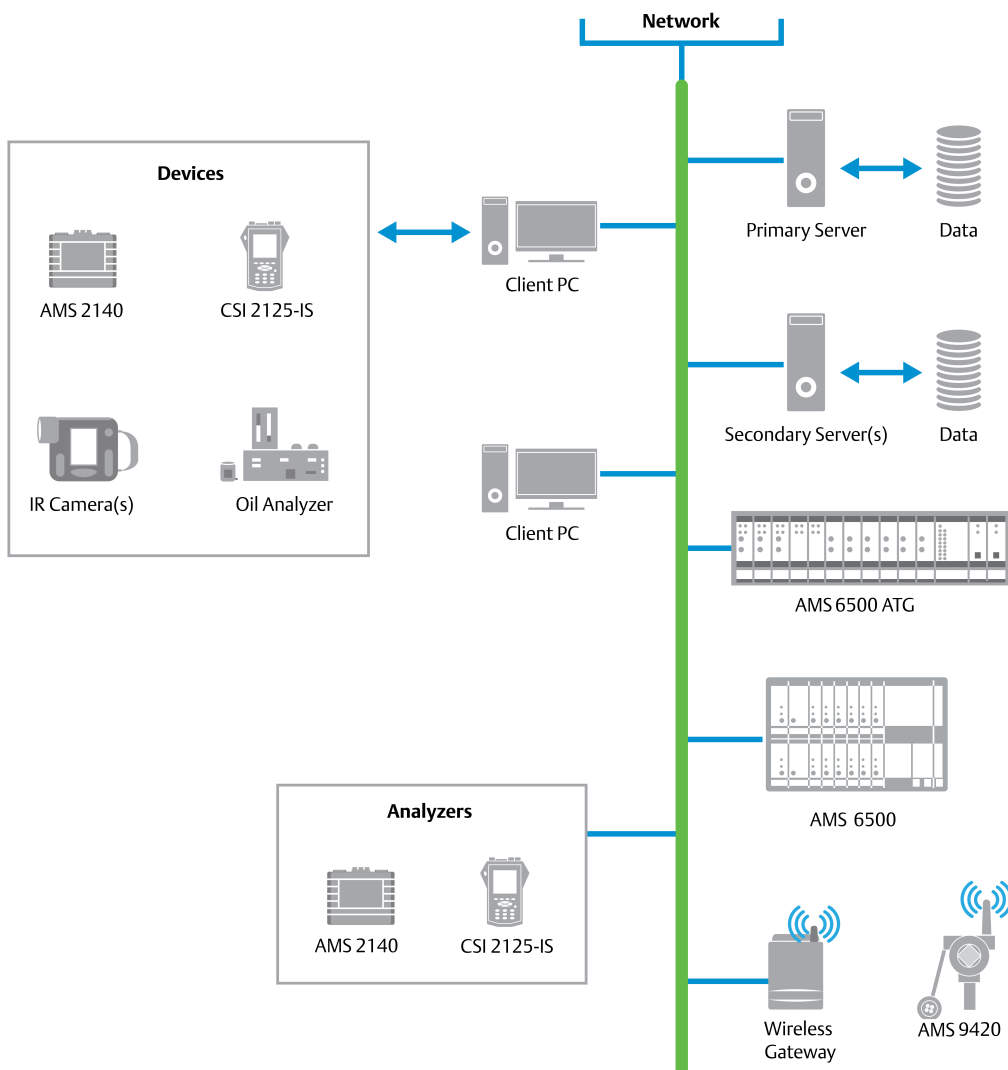
Single-user and multiple-user LAN

A Single-user network indicates you have a Network Server and a Client installed on one computer and have one serial number. Single-user network allows the Client to be installed on other computers in the network. However, only one user can log in at a time. This installation is used for single user customers with an online system.

A Multiple-user network indicates you have a Network Server and a Client installed on a server-class computer, and the Client installed on other computers in the network. Multiple users can log in at the same time.

Figure 1-2: Local area network system example

This example does not attempt to show all supported hardware or configuration options.

**Note**

The CSI 2125-IS Analyzer can only be connected to the network through serial or serial-to-USB connection.

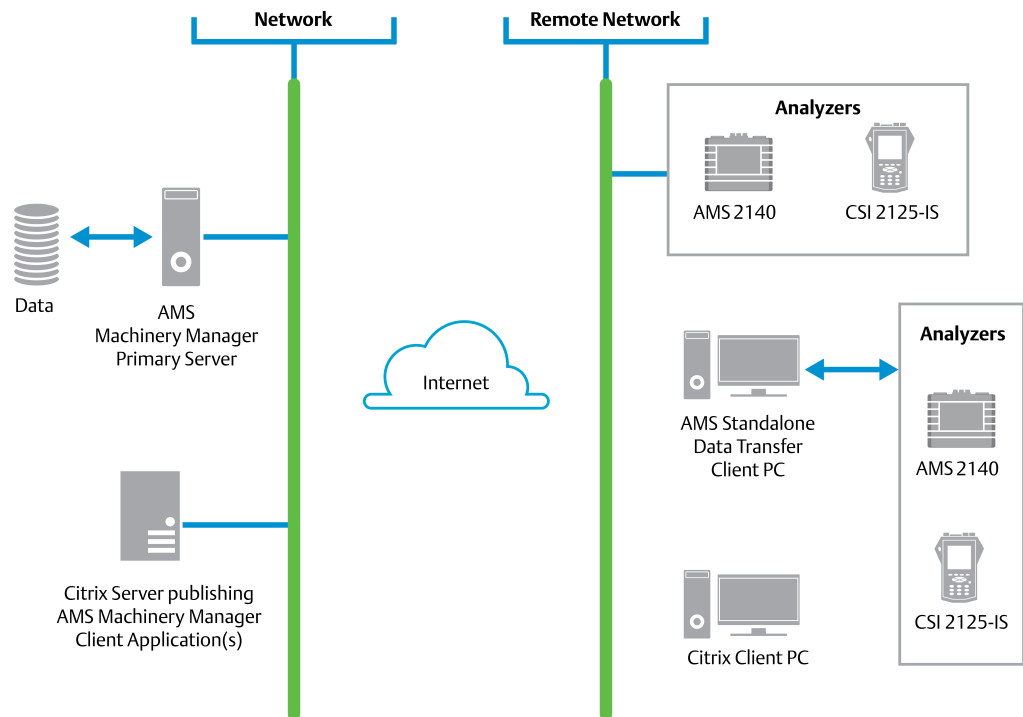
Multiple-user WAN

The WAN system is designed to allow remote AMS Machinery Manager users to load, dump, and view data over wide area networks, such as private networks, virtual private networks⁽²⁾, or the Internet.

(2) Use AMS Standalone Data Transfer

Figure 1-3: Wide area network system example

This example does not attempt to show all supported hardware or configuration options.

**Note**

The CSI 2125-IS Analyzer can only be connected to the network through serial or serial-to-USB connection.

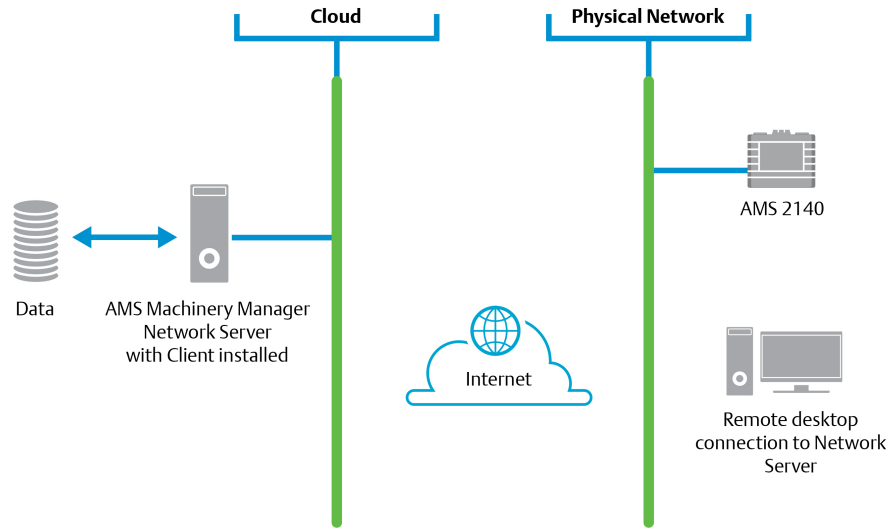
Cloud installations

AMS Machinery Manager Network Server and client can be installed on a virtual host in the Microsoft Azure cloud.

Cloud setups are only supported for use with the AMS 2140.

AMS 2140 devices should be in the same network as the Network Server and should be within the IP range of the local network. Connection between the AMS Machinery Manager and the AMS 2140 is through Ethernet. The Data Transfer Service is used to dump and retrieve data from the AMS 2140. You can also remotely connect to the Network Server in the cloud through Remote Desktop Protocol (RDP).

Figure 1-4: Cloud installation example



1.4 Operating Requirements

1.4.1 Servers

Requirements	
Supported Operating Systems	Windows Server 2016 Standard ⁽²⁾ , Windows Server 2016 Datacenter ⁽²⁾ , Windows Server 2012 R2 Standard ⁽²⁾ , and Windows Server 2012 R2 Datacenter ⁽²⁾
Processor/Memory	2.4 GHz 4-core processor or faster, 8 GB of RAM (minimum)
Network	Ethernet (TCP/IP protocol)
Screen Resolution	Minimum: SXGA (1024 x 768) Maximum: 4K UHD (3840 x 2160) — Refer to KBA NK-1600-0412 for display configuration.
Requirements for laptops used with AMS 2600 systems	
Supported Operating Systems	Windows 10 Professional x64 ⁽¹⁾ , Windows 10 Enterprise x64 ⁽²⁾ , Windows 10 Enterprise LTSB ⁽²⁾ , Windows 7 Professional SP1 x64, Windows 7 Ultimate, and Windows 7 Enterprise x64
Processor/Memory	2.4 GHz 4-core processor or faster, 8 GB of RAM (minimum)
Hard drive	SAS hard drive (10,000 RPM)
Hard drive available space	300 GB (minimum)
RS232	One available RS232 interface
Network	Ethernet (TCP/IP protocol)
Screen Resolution	Minimum: SXGA (1024 x 768) Maximum: 4K UHD (3840 x 2160) — Refer to KBA NK-1600-0412 for display configuration.
Additional recommendations	
Browser	Internet Explorer 11 or later ⁽²⁾
Media	DVD drive required for installation
Virtualization System (minimum version)	<ul style="list-style-type: none"> • Citrix XenApp 7.9 • VMware ESXi 6.0 • Hyper-V
Cloud computing service	Microsoft Azure
Antivirus (minimum version)	<ul style="list-style-type: none"> • McAfee™ Endpoint Security 10.1 • Norton Security Version 22.7 — Refer to KBA NK-1600-0412 for antivirus configuration. • Symantec™ Endpoint Protection 12.1.6 — Refer to KBA NK-1600-0411 for antivirus configuration.

(1) Requires Microsoft .NET Framework 3.5 SP1, available from the Microsoft web site. Because AMS Machinery Manager does not require an Internet connection for installation, Emerson recommends installing .NET Framework 3.5 SP1 before AMS Machinery Manager.

(2) Requirement for AMS Machinery Manager Dashboard and Machine History Viewer (MHV).

Important

If you intend to install Machine History Viewer or CSI Data Provider, you must install Internet Information Services before installing AMS Machinery Manager. The AMS Machinery Manager installation makes important changes to the IIS setup that you would otherwise have to configure manually with the assistance of Product Support.

1.4.2 Workstations

Requirements	
Supported Operating Systems ⁽¹⁾	Windows 10 Professional x64 ⁽²⁾ , Windows 10 Enterprise x64 ⁽²⁾ , Windows 10 Enterprise LTSB ⁽²⁾ , Windows 7 Professional SP1 x64, Windows 7 Ultimate, and Windows 7 Enterprise x64
Processor/Memory	2.2 GHz 4-core processor or faster, 4 GB of RAM (minimum)
Hard drive	SAS hard drive (10,000 RPM)
Hard drive available space	100 GB (minimum)
Network	Ethernet (TCP/IP protocol)
Browser	Internet Explorer 11 or later ⁽³⁾
Screen Resolution	Minimum: SXGA (1024 x 768) Maximum: 4K UHD (3840 x 2160 pixels) — Refer to Knowledge Base Article (KBA) NK-1600-0412 for display configuration.
Communication requirements	
RS232	For communication with the Spectro 5200 Trivector™ Analyzer, a PC must have an RS232 serial port, or use a serial-to-USB cable.
USB	A USB 2.0 port is required for communications with an AMS 2140 Machinery Health Analyzer. A USB 2.0 port is required for communications with a WDA Image Capture Kit.
Additional recommendations	
Media	DVD drive required for installation
Antivirus (minimum version)	<ul style="list-style-type: none"> McAfee™ Endpoint Security 10.1 Norton Security Version 22.7 — Refer to KBA NK-1600-0412 for antivirus configuration. Symantec™ Endpoint Protection 12.1.6 — Refer to KBA NK-1600-0411 for antivirus configuration.

(1) Installation is supported also on Windows Server 2012 and 2016 (listed in [Section 1.4.1](#)).

(2) Requires Microsoft .NET Framework 3.5 SP1, available from the Microsoft web site. Because AMS Machinery Manager does not require an Internet connection for installation, Emerson recommends installing .NET Framework 3.5 SP1 before AMS Machinery Manager.

(3) Requirement for AMS Machinery Manager Dashboard and Machine History Viewer (MHV).

2 Standalone installation

Topics covered in this chapter:

- [Install AMS Machinery Manager](#)
- [Launch AMS Machinery Manager](#)
- [Update or repair the installation](#)

2.1 Install AMS Machinery Manager

Prerequisites

Verify the client computer meets the operating requirements for a workstation.

Note

If you are upgrading your software, back up your database before completing the software update. Your databases require reindexing to work with the new software. If you need to reinstall the previous version of software, be aware that any database you open with the new software will be reindexed and will no longer work with any previous version.

Procedure

1. Log on to the computer as a user with administrator rights.
2. Insert the AMS Machinery Manager Software Installation DVD and open it in Windows Explorer.
3. Run RBMsetup.exe.

Important

On Windows 7, right-click RBMsetup.exe and select Run as administrator. Click Cancel if the installation launches automatically when you insert the DVD. You must run the installation manually.

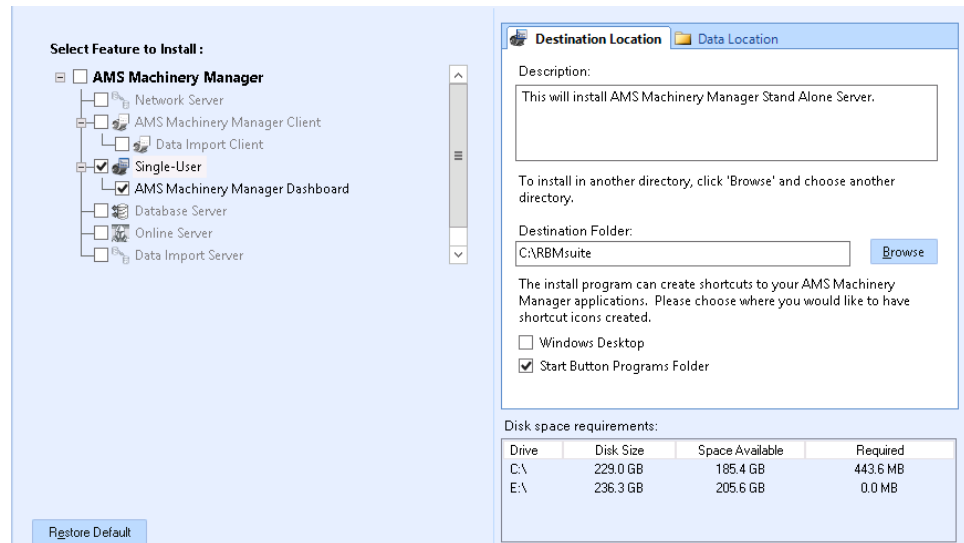
4. If a prompt to install Microsoft .NET Framework 4.0 appears, choose to install this software and allow the system to reboot, (if required).

The AMS Machinery Manager installation begins automatically after reboot.

5. Accept the license agreement and click Next.
6. At the ATTENTION!! dialog, click Yes if you are installing the software for the first time. If you are upgrading your software, this is a reminder to stop the installation and back up your database first. Click No to stop the installation.
7. The setup program verifies that your system meets the minimum requirements. If they are met, the Options page dialog appears. If they are not met, a message displays more information. Update the computer to meet the requirements or contact Product Support.

8. (Optional) At the Select Features to Install pane, you can change defaults for your installation.

The AMS Machinery Manager Dashboard is selected by default. When installed, the Dashboard displays a quick summary of the status of equipment, prediction units, and databases in your system.



Notes

- Use the default settings and directory names unless there is a particular reason to change them. Using the defaults results in a trouble-free installation and streamlined interaction with Emerson Product Support, should a problem ever arise.
- If you are updating the software, this screen also displays the message, “The following file has been found in your Data Directory” followed by file names. You can check the box by the file to overwrite the file.
- If you are updating your software, some fields may be disabled. If you want to update your software and move to a different computer, contact Emerson Product Support.

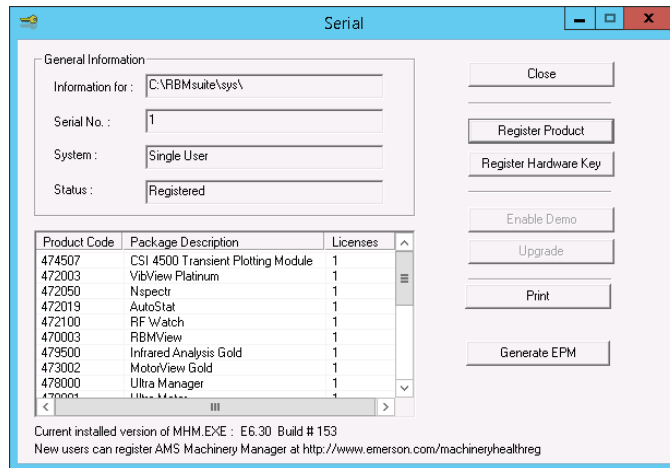
9. Click Install to start the installation.

The Installing Components screen displays and shows the status of the installation.

Note

Once the install is underway, there will be a point where the Cancel button is disabled. Do not try to end the install if the Cancel button is disabled. If the install aborts after this point, you may need to contact Emerson Product Support.

10. If you are using Windows Firewall, grant access to programs published by Emerson when prompted.
11. Continue through the installation steps and follow prompts.
12. When the Serial dialog appears, click Register Product to register the software now, or click Close to skip registration.



Note

To register later, open Windows Explorer, go to C:\RBMsuite\sys and double-click Serial.exe.

- a. In the Serial dialog, click Register Product.

The Register Product dialog appears. You need the Serial No. and Request No. during registration.

- b. Contact Product Support to register.

Phone: Toll free 888.367.3774, option 2 (U.S. and Canada)
+63.2.702.1111 (Rest of world)

Email: wwcs.custserv@emerson.com

Web: <http://www.emerson.com/machineryhealthreg>

- c. Enter the Response code given to you by a Product Support representative.
- d. Click OK.
- e. In the Serial dialog, verify the Status is "Registered."
- f. Click Close.

Your software is registered.

The installation automatically continues.

13. Click Finish to complete the installation.

If the computer requires a reboot, Restart Now is selected on the Finish page. Allow the system to reboot before attempting to run the software.

2.2 Launch AMS Machinery Manager

Now that you have installed and registered AMS Machinery Manager, you are ready to launch AMS Machinery Manager.

Procedure

1. Go to Start > Programs (All Programs) > AMS Machinery Manager.
2. Select AMS Machinery Manager.
3. Log in when prompted.
 - a. Initially, Administrator is the default user. Leave the password blank and click OK.
 - b. When prompted, set the password for Administrator user. A password is required for all users.
 - c. If you use a different user, enter the username and password and click OK.

See the Administration topics in AMS Machinery Manager Help to set the Administrator password and create a new user.

2.3 Update or repair the installation

Note

You must register the software when you update it.

Prerequisites

Close all AMS Machinery Manager programs.

Stop AMS Machinery Manager services.

Procedure

1. Insert the AMS Machinery Manager Software Installation DVD and open it in Windows Explorer.
2. Run RBMsetup.exe.

Important

On Windows 7, right-click RBMsetup.exe and select Run as administrator. Click Cancel if the installation launches automatically when you insert the DVD. You must run the installation manually.

3. At the startup screen choose Add/Update or Repair and click Next.
4. At the Options pane, choose the features to install or leave the defaults selected for an update.
5. In the list labeled The following files have been found in your Data Directory, check the box by a file to replace the file on your computer with the file from the installation.
6. Click Install to start the installation.

The Installing Components screen displays the status of the installation.

Note

Once the install is underway, there will be a point where the Cancel button is disabled. Do not try to end the install if the Cancel button is disabled. If the install aborts after this point, you may need to contact Emerson Product Support.

7. Continue through the installation steps and follow prompts.
8. Click Finish to complete the installation.

If the computer requires a reboot, Restart Now is selected on the Finish page. Allow the system to reboot before attempting to run the software.

Postrequisites

When upgrading to v6.3, you will need to update the schema of databases that were created prior to v6.3. See [Appendix E](#) for instructions.

3 Network installation

Topics covered in this chapter:

- *Physical network installation overview*
- *Cloud installation overview*
- *Install the Network Server*
- *Install the AMS Machinery Manager Client*
- *Launch AMS Machinery Manager Client*
- *Install a Secondary Database Server*
- *Install an Online Server*
- *Install Data Import Server and Data Import Client*
- *Install Collaboration Tool*
- *Update or install new features on the Network Server*

3.1 Physical network installation overview

Important

- If you intend to install Machine History Viewer or CSI Data Provider, you must install Internet Information Services before installing AMS Machinery Manager. The AMS Machinery Manager installation makes important changes to the IIS setup that you would otherwise have to configure manually with the assistance of Product Support.
- If you are upgrading your software, back up your database before completing the software update. Your databases require reindexing to work with the new software. If you need to reinstall the previous version of software, be aware that any database you open with the new software will be reindexed and will no longer work with any previous version.

Prerequisites

Ensure each computer meets the minimum system operating requirements.

Procedure

1. Install the Network Server on the server first.
2. Install the AMS Machinery Manager Client on a workstation.
3. Install secondary servers and clients on other computers on the network.

You can install Online Server, Secondary Database Server, Data Import Server, Data Import Client, and AMS Machinery Manager Client on other computers in the network.

Postrequisites

- Configure service accounts and firewall settings for each computer, if necessary.

Refer to [Chapter 6](#) for more information.

- Network installations require further configuration for each Machinery Health Monitor.

For more information, open Help in AMS Machinery Manager and choose Administration > Online Server.

3.2 Cloud installation overview

Cloud installation is only supported for AMS 2140 use cases, involving dumping and storing of routes. Other AMS Machinery Manager configurations in the Microsoft Azure cloud are not supported and are not recommended. See KBA NK-1900-0557 for more information.

Prerequisites

Ensure the virtual host meets the minimum system requirements for a server installation.

Procedure

1. Configure the Microsoft Azure virtual host.

Configuration of the virtual host varies per organization. Coordinate with your IT department for information in configuring your virtual network.

Note

If your organization does not allow the network subnet to access the virtual machine, your network is required to have two static IP addresses. One IP address is allocated for the local machine and another for the AMS 2140 that has access to the virtual host. Otherwise, dynamic IP addresses is sufficient.

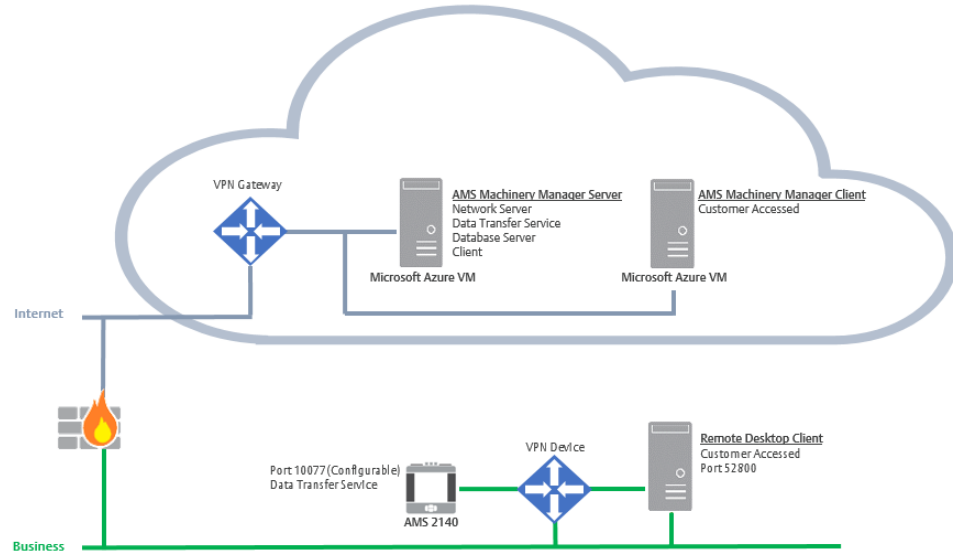
2. Install the Network Server on the virtual host.

Only include in the installation the AMS Machinery Manager Network Server, Client, and the Dashboard.

3. Enable secure connection between AMS Machinery Manager and AMS 2140 devices.

Emerson recommends setting up a VPN site-to-site connection as shown in the following diagram. Refer to the Azure documentation on the Microsoft website for more information

<https://docs.microsoft.com/en-us/azure/vpn-gateway/vpn-gateway-vpn-faq>.



- Emerson recommends complying with CIS (Center for Internet Security) Benchmarks specific to the operating system of your virtual host.

This is an added security recommendation for machines that are in the cloud and/or exposed to the Internet. Consult with your IT department for more information.

Postrequisites

- Configure the virtual host and AMS 2140 for connection. See [Appendix D](#) for details.

3.3 Install the Network Server

The Network Server installation procedure installs and configures the programs and services required for the primary server. You can choose to install additional features.

The installation creates a shared folder from which you install the Client or other licensed components on other machines on this network. By default, the folder is C:\RBMnet and is shared as \\Servername\RBMnet where *Servername* is the network computer name.

Prerequisites

Ensure the computer meets the minimum system operating requirements.

If you are upgrading your software, back up your database before completing the software update. Your databases require reindexing to work with the new software. If you need to reinstall the previous version of software, be aware that any database you open with the new software will be reindexed and will no longer work with any previous version.

To install AMS Machinery Manager on a drive other than C, create a shared folder named RBMnet on the drive where you want to install the software, prior to starting the installation. After installation is complete, an administrator may need to modify the shared folder's security permissions to allow access from other computers.

Important

If you intend to install Machine History Viewer or CSI Data Provider, you must install Internet Information Services before installing AMS Machinery Manager. The AMS Machinery Manager installation makes important changes to the IIS setup that you would otherwise have to configure manually with the assistance of Product Support.

Procedure

1. Log on to the computer as a user with administrator rights.
2. Insert the AMS Machinery Manager Software Installation DVD and open it in Windows Explorer.
3. Run RBMsetup.exe.

Important

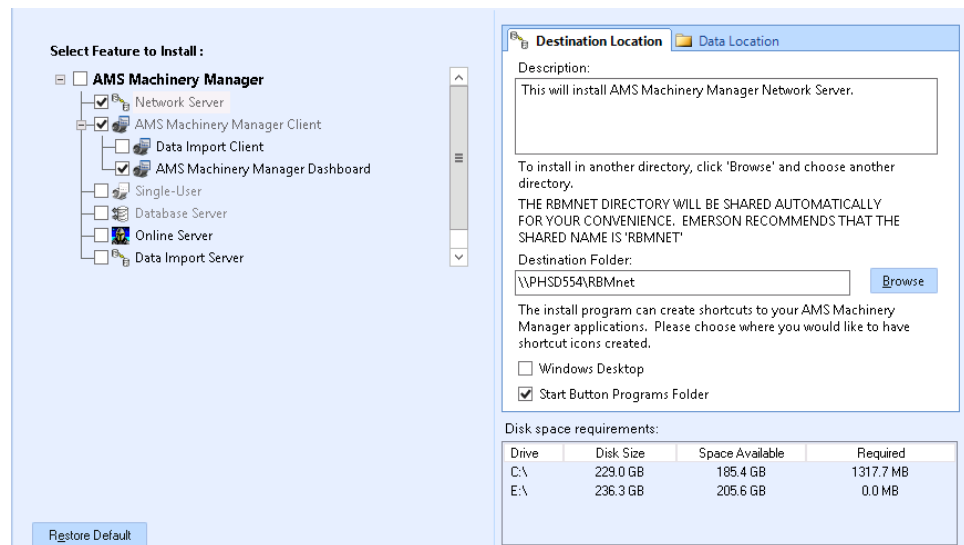
On Windows 7, right-click RBMsetup.exe and select Run as administrator. Click Cancel if the installation launches automatically when you insert the DVD. You must run the installation manually.

4. Accept the license agreement and click Next.
5. If a prompt to install Microsoft .NET Framework 4.0 appears, choose to install this software and allow the system to reboot, (if required).

The AMS Machinery Manager installation begins automatically after reboot.

6. At the ATTENTION!! dialog, click Yes if you are installing the software for the first time. If you are upgrading your software, this is a reminder to stop the installation and back up your database first. Click No to stop the installation.
7. The setup program verifies that your system meets the minimum requirements. If they are met, the Options page dialog appears. If they are not met, a message displays more information. Update the computer to meet the requirements or contact Product Support.
8. At the Options page dialog, make changes to the Select Features to Install list, if desired.

Network Server, Client, and Dashboard are checked as the preferred defaults. You can select other features, if available. Refer to corresponding sections for more information about additional features.



- Database Server, [Section 3.6](#)
- Online Server, [Section 3.7](#)
- Data Import Server, [Section 3.8](#)
- Data Import Client, [Section 3.8](#)

Notes

- Use the default settings and directory names unless there is a particular reason to change them. Using the defaults results in a trouble-free installation and streamlined interaction with Emerson Product Support, should a problem ever arise.
- If you are updating the software, this screen also displays the message, “The following file has been found in your Data Directory” followed by file names. You can check the box by the file to overwrite the file.
- If you are updating your software, some fields may be disabled. If you want to update your software and move to a different computer, contact Emerson Product Support.

Follow these steps if you need to change the default locations:

- If you need to change the installation directory, select Network Server in the features list and open the Destination Location tab.

Browse to the location. The Destination Folder is in Universal Naming Convention (UNC) format. A red error icon flashes if the path is invalid.

- If you need to change where your data is stored, select Network Server in the features list and open the Data Location tab.

Browse to the location. The path is in Universal Naming Convention (UNC) format. A red error icon flashes if the path is invalid.

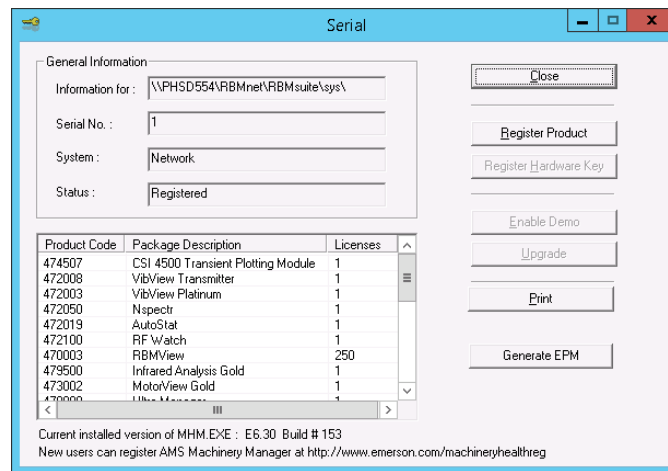
- Click Install to start the installation.

The Installing Components screen displays the status of the installation.

Note

Once the install is underway, there will be a point where the Cancel button is disabled. Do not try to end the install if the Cancel button is disabled. If the install aborts after this point, you may need to contact Emerson Product Support.

10. If you are using Windows Firewall, grant access to programs published by Emerson when prompted.
11. When the Serial dialog appears, click Register Product to register the software now, or click Close to skip registration.

**Note**

To register later, on the Network Server, go to C:\RBMnet\RBMsuite\sys and double-click Serial.exe.

- a. In the Serial dialog, click Register Product.

The Register Product dialog appears. You need the Serial No. and Request No. during registration.
- b. Contact Product Support to register.

Phone: Toll free 888.367.3774, option 2 (U.S. and Canada)
+63.2.702.1111 (Rest of world)

Email: wwcs.custserv@emerson.com

Web: <http://www.emerson.com/machineryhealthreg>
- c. Enter the Response code given to you by a Product Support representative.

The code is only valid for your computer.
- d. Click OK.
- e. In the Serial dialog, verify the Status is "Registered."
- f. Click Close.

Your software is registered.

The installation automatically continues, installing the Client and any other selected features.

12. Continue through the installation steps and follow prompts.
13. Click Finish to complete the installation.

If the computer requires a reboot, Restart Now is selected on the Finish page. Allow the system to reboot before attempting to run the software.

Postrequisites

Install AMS Machinery Manager Client on a workstation.

3.4 Install the AMS Machinery Manager Client

Run the AMS Machinery Manager installation program (RBMsetup.exe) on a computer in the AMS Machinery Manager network. Choose the Client option.

Prerequisites

- Install the AMS Machinery Manager Network Server on the server first.
- Verify the client computer meets the operating requirements for a workstation.
- Verify the workgroup or domain settings match on the Network Server computer and Database Server computer.

Procedure

1. Log on to the computer as a user with administrator rights.
2. Browse to the shared folder on the Network Server. For example, \\Servername\RBMnet, where *Servername* is the computer's name.

Important

Do NOT use a mapped drive path.

3. Run RBMsetup.exe.

Important

On Windows 7, right-click RBMsetup.exe and select Run as administrator. Click Cancel if the installation launches automatically when you insert the DVD. You must run the installation manually.

4. At the Options page dialog, make changes to the Select Features to Install list, if desired.

You can install certain additional features on other computers in the AMS Machinery Manager network. The Network Server option is disabled here since only one network server is allowed on an AMS Machinery Manager network.

The Client is selected and default locations are set. If desired, select the Shortcuts tab and select Add shortcuts to desktop

5. Click Install to start the installation.

The Installing Components screen displays the status of the installation.

Note

Once the install is underway, there will be a point where the Cancel button is disabled. Do not try to end the install if the Cancel button is disabled. If the install aborts after this point, you may need to contact Emerson Product Support.

6. Continue through the installation steps and follow prompts.
7. Click Finish to complete the installation.

If the computer requires a reboot, Restart Now is selected on the Finish page. Allow the system to reboot before attempting to run the software.

3.4.1 Install the Dashboard

The Dashboard install option is available for both network and single installations.

It is a default selection for both single and network installations but can only be installed as part of the AMS Machinery Manager Client in network installs.

The Dashboard gives a quick summary of the status of equipment, prediction units, and databases in your system.

The Dashboard requires Internet Explorer 11 or later versions.

3.5 Launch AMS Machinery Manager Client

Now that you have installed and registered AMS Machinery Manager, you are ready to launch the AMS Machinery Manager Client.

Procedure

1. Go to Start > Programs (All Programs) > AMS Machinery Manager.
2. Select AMS Machinery Manager Client.
3. Log in when prompted.
 - a. Initially, Administrator is the default user. Leave the password blank and click OK.
 - b. If you use a different user, type in the username and password and click OK.

See the Administration topics in AMS Machinery Manager Help to set the Administrator password and create a new user.

3.6 Install a Secondary Database Server

Prerequisites

- Install the AMS Machinery Manager Network Server on the server first.
- Verify the workgroup or domain settings match on the Network Server computer and Database Server computer.

Procedure

1. Log on to the computer as a user with administrator rights.
2. Browse to the shared folder on the Network Server. For example, \\Servername\RBMnet, where *Servername* is the computer's name.

Important

Do NOT use a mapped drive path.

3. Run RBMsetup.exe.

Important

On Windows 7, right-click RBMsetup.exe and select Run as administrator. Click Cancel if the installation launches automatically when you insert the DVD. You must run the installation manually.

4. Follow instructions presented by the installation program.
5. Accept the license agreement and click Next.
6. At the ATTENTION!! dialog, click Yes if you are installing the software for the first time. If you are upgrading your software, this is a reminder to stop the installation and back up your database first. Click No to stop the installation.
7. At the Options page dialog, make changes to the Select Features to Install list, if desired.

You can install certain additional features on other computers in the AMS Machinery Manager network. The Network Server option is disabled here since only one network server is allowed on an AMS Machinery Manager network.

- To install a Secondary Database server, select Database Server.
- (Optional) To install the Client, select Client.
- Uncheck features you do not want to install on this computer.

You can change the default destination location and configuration location on your database server. These tabs are disabled for updates.

8. Click Install to start the installation.

The Installing Components screen displays the status of the installation.

Note

Once the install is underway, there will be a point where the Cancel button is disabled. Do not try to end the install if the Cancel button is disabled. If the install aborts after this point, you may need to contact Emerson Product Support.

9. Continue through the installation steps and follow prompts.
10. Click Finish to complete the installation.

If the computer requires a reboot, Restart Now is selected on the Finish page. Allow the system to reboot before attempting to run the software.

The secondary database server can be accessed through the Network Server. The files are installed in C:\RBMDBSRV by default.

Postrequisites

- In Windows Explorer, browse to C:\RBMDBSRV and create new folder named CustData. Share the CustData folder so it is available on the AMS Machinery Manager network.
- Add the database server in RBM Network Administration. Refer to the *Administration* topics in AMS Machinery Manager Help for more information.

3.7 Install an Online Server

Note

Unless otherwise specified, a Machinery Health Monitor is pre-configured with a database created according to customer specifications. The Online Server has been set up during commissioning.

You can install additional Online Servers and commission additional Machinery Health Monitors on your AMS Machinery Manager network. If you install an additional Online Server, select Database Server as well.

Prerequisites

- Install the AMS Machinery Manager Network Server on the server first.
- Verify the workgroup or domain settings match on the Network Server computer and Database Server computer.

Procedure

1. Log on to the computer as a user with administrator rights.
2. Browse to the shared folder on the Network Server. For example, \\Servername\RBMnet, where *Servername* is the computer's name.

Important

Do NOT use a mapped drive path.

3. Run RBMsetup.exe.

Important

On Windows 7, right-click RBMsetup.exe and select Run as administrator. Click Cancel if the installation launches automatically when you insert the DVD. You must run the installation manually.

4. Follow instructions presented by the installation program.
5. At the AMS Machinery Manager Setup - Options page, select Online Server and Database Server.
 - (Optional) To install the Client, select Client.
 - Uncheck features you do not want to install on this computer.
6. Continue through the installation steps and follow prompts.
7. In Windows Services, verify the following services are started.
 - CsiO_Server
 - CsiMtdbMgr
 - CSI_MhmRemote

Postrequisites

- In Windows Explorer, browse to C:\RBMDBSRV and create new folder named CustData. Share the CustData folder so it is available on the AMS Machinery Manager network.
- Set up the Online Server in RBM Network Administration. Refer to the *Administration* topics in AMS Machinery Manager Help for more information.

3.8 Install Data Import Server and Data Import Client

The Data Import Server and Data Import Client are only available if you license the Data Import functionality (included with network systems). You can install Data Import Server and Data Import Client together or separately on the Network Server or on other computers in the AMS Machinery Manager network.

When you install the Data Import Server, the CSI Data Import Service and ATG Service are also installed.

3.8.1 Install Data Import Server or Client on an existing Network Server

Follow instructions to update or install new features on the Network Server. See [Section 3.10](#). At the Options pane, choose the Data Import Server and/or Data Import Client. If you choose Data Import Client, AMS Machinery Manager Client is automatically selected. Data Import Client is required to be installed in the same directory as the AMS Machinery Manager Client.

3.8.2 Install Data Import or Client on a Secondary Server or Workstation

Prerequisites

- Ensure the computer meets the minimum system operating requirements.
- Verify the workgroup or domain settings match on the Network Server computer and Database Server computer.

Procedure

1. Log on to the computer as a user with administrator rights.
2. Browse to the shared folder on the Network Server. For example, \\Servername\RBmnet, where *Servername* is the computer's name.

Important

Do NOT use a mapped drive path.

3. Run RBMsetup.exe.

Important

On Windows 7, right-click RBMsetup.exe and select Run as administrator. Click Cancel if the installation launches automatically when you insert the DVD. You must run the installation manually.

4. Accept the license agreement and click Next.
5. At the Options pane, choose the Data Import Server and/or Data Import Client.

If you choose Data Import Client, AMS Machinery Manager Client is automatically selected. Data Import Client is required to be installed in the same directory as the AMS Machinery Manager Client.

6. Click Install to start the installation.

The Installing Components screen displays the status of the installation.

Note

Once the install is underway, there will be a point where the Cancel button is disabled. Do not try to end the install if the Cancel button is disabled. If the install aborts after this point, you may need to contact Emerson Product Support.

7. Click Finish to complete the installation.

If the computer requires a reboot, Restart Now is selected on the Finish page. Allow the system to reboot before attempting to run the software.

3.9 Install Collaboration Tool

When Collaboration Tool is installed with AMS Machinery Manager Network Server and Clients, users logged into the Clients using the same Network Server can communicate with one another and share multiple types of information with other Collaboration Tool users.

3.9.1 Install Collaboration Tool on the Network Server

When you install Collaboration Tool on the Network Server the MHM Peer Resolver Service (MHMPeerResolverService.exe) is installed.

Prerequisites

- Install the AMS Machinery Manager Network Server on the server first.
- Install AMS Machinery Manager Client on the Client computer.

Procedure

1. On the Network Server, use Windows Explorer to browse to the RBMnet folder. For example, C:\RBMnet.
2. Browse to Install\CollaborationTool.
3. Double-click setup.exe and continue through the installation.

Important

On Windows 7, right click setup.exe and select Run as administrator.

4. Accept the license agreement and click Next.
5. Click Install to start the installation.

The Installing Components screen displays the status of the installation.

Note

Once the install is underway, there will be a point where the Cancel button is disabled. Do not try to end the install if the Cancel button is disabled. If the install aborts after this point, you may need to contact Emerson Product Support.

6. Click Finish to complete the installation.

3.9.2 Install Collaboration Tool on the Client

Prerequisites

- Install the AMS Machinery Manager Network Server on the server first.
- Install AMS Machinery Manager Client on the Client computer.

Procedure

1. Log on to the computer as a user with administrator rights.

2. Browse to the shared folder on the Network Server. For example, \\Servername\RBmnet, where *Servername* is the computer's name.

Important

Do NOT use a mapped drive path.

3. Browse to Install\CollaborationTool.
4. Double-click setup.exe and continue through the installation.

Important

On Windows 7, right click setup.exe and select Run as administrator.

5. Accept the license agreement and click Next.
6. Follow instructions presented by the installation program.

3.9.3 Launch Collaboration Tool

1. Launch AMS Machinery Manager Client.
2. From the main menu, select View > Collaboration Tool.

Initially, Collaboration Tool opens on the right side of the AMS Machinery Manager Client screen.

Refer to Collaboration Tool topics in AMS Machinery Manager Help for more information.

3.10 Update or install new features on the Network Server

When you install the Network Server, you can choose which features to install. You can install the additional features on the Network Server later, by running the installation program on the server where you have AMS Machinery Manager installed.

Note

You must register the software when you update it.

Prerequisites

- Close all AMS Machinery Manager programs.
- Stop AMS Machinery Manager services.

Procedure

1. Log onto the Network Server as a user with administrator rights.
2. Close AMS Machinery Manager and stop any AMS Machinery Manager services.
3. Browse to the Network Server's installation folder, for example C:\RBmnet.

4. Run RBMsetup.exe.

Important

On Windows 7, right-click RBMsetup.exe and select Run as administrator. Click Cancel if the installation launches automatically when you insert the DVD. You must run the installation manually.

5. At the maintenance screen, select Add/Update and click Next.
6. At the Options pane, choose the features to install or leave the defaults selected for an update.
7. Click Install to start the installation.

The Installing Components screen displays the status of the installation.

Note

Once the install is underway, there will be a point where the Cancel button is disabled. Do not try to end the install if the Cancel button is disabled. If the install aborts after this point, you may need to contact Emerson Product Support.

8. Click Finish to complete the installation.

If the computer requires a reboot, Restart Now is selected on the Finish page. Allow the system to reboot before attempting to run the software.

Postrequisites

When upgrading to v6.3, you will need to update the schema of databases that were created prior to v6.3. See [Appendix E](#) for instructions.

4 Additional installations

Topics covered in this chapter:

- [Install Machine History Viewer](#)
- [Install AMS Standalone Data Transfer](#)
- [Install AMS Machinery Manager ODBC Driver](#)
- [Install AMS Machinery Manager CSI Data Provider](#)
- [Install CSI USB drivers](#)

4.1 Install Machine History Viewer

Machine History Viewer works in conjunction with AMS Machinery Manager and other AMS software programs to allow you to view and analyze the operating history of a facility's rotating machinery. Machine History Viewer is a browser-based application that can be accessed from any network computer.

4.1.1 Install Internet Information Services (IIS)

Install Internet Information Services (IIS) with the following features:

- IIS Management Console
- IIS Application Development Features (World-wide Web Services)
 - .NET Extensibility
 - ASP
 - ASP.NET
 - ISAPI Extensions
 - ISAPI Filters
 - Server-side Includes

Tip

On Windows 7, open Control Panel, select Turn Windows Features On or Off and select the features from Internet Information Services and World Wide Web Services.

4.1.2 Install Machine History Viewer on the Network Server

Machine History Viewer installation includes the following components:

- Machine History Viewer Web Service
- Machine History Viewer Client User Interface
- Microsoft SQL Server 2014 Express

Machine History Viewer can be installed in three configurations:

1. Compact configuration: Install Machine History Viewer on the same server-class computer as AMS Machinery Manager Network Server and Microsoft SQL Server 2014 Express for a compact configuration.
2. Recommended configuration: Install Network Server on one server-class machine and install Machine History Viewer and Microsoft SQL Server 2014 Express on a separate server-class computer.
3. Distributed configuration: Install each required component of Machine History Viewer on separate server-class computers.

The instructions describe how to install either the compact configuration and recommended configuration.

Prerequisites

- Install the AMS Machinery Manager Network Server on the server first.
- The Machine History Viewer version must match Network Server.
- Install IIS 5.2 or newer first. (Install IIS before the .NET Framework, available during installation).

Note

- Microsoft SQL Server 2014 Express is required by and installed with Machine History Viewer.
- Microsoft .NET Framework 4.0 is required by and installed with Machine History Viewer Web Service, Microsoft SQL Server 2014 Express, and the Machine History Viewer Client User Interface.

Procedure

1. Insert the AMS Machinery Manager Software Installation DVD and open it in Windows Explorer.
2. Browse to the InstallMachineHistoryViewer folder.
3. Double-click setup.exe and continue through the installation.

Important

On Windows 7, right click setup.exe and select Run as administrator.

4. Accept the license agreement.
5. The Configuration window displays. Choose the components to install on this computer and click Next.
 - For the compact configuration and the recommended configuration, check both Web Service and Client UI.
 - For the distributed configuration, launch the installation on each computer; choose only the Web Service feature on one computer, and only the Client UI feature on the other computer.
6. Click Yes if prompted to install the Microsoft .NET Framework.

It may take several minutes to complete the installation. This step applies if Microsoft .NET Framework is not already installed.

A dialog may display the process of the Microsoft Report Viewer redistributable files installation.

7. In the Select Computer for SQL Server 2014 Express dialog, choose where to install the SQL server and click Next.
 - For a compact configuration and the recommended configuration, select This computer (maximizes performance).
 - For the distributed configuration, select A separate computer (may degrade performance). A dialog displays additional instructions for this setup.

Note

If Microsoft SQL Server 2014 Express is already installed, this installation process creates new instance named “EmersonCSIMM”. If you run the installer again, the Microsoft SQL Server 2014 Express does not need to install additional instances.

8. When prompted, type a password to be used as part of the SQL connection string and click Next. The SQL server installs automatically.

A summary of the SQL configuration displays. Make a note of this information for future reference.

Computer Name:	
SQL Server Instance Name:	EmersonCSIMM
Strong Password:	

9. (Distributed configuration only.) If you chose to install the SQL server on a separate computer, the Database Server Login dialog appears. Provide the information to connect to the SQL server on the separate computer.
10. Review the Disk Space Requirements for Local and Mapped Drives dialog to determine where you want to install the selected Machine History Viewer components. Click OK.
11. In the Choose Destination Location dialog, click Next to accept the default location (recommended), or click Browse and select a different location for the selected Machine History Viewer components.
12. When prompted, enter the network name of the computer where the Network Server is installed.

You must specify the computer name if the installation is not on the same computer as the Network Server.

13. (Distributed configuration only.) When prompted, enter the network name of the computer hosting the Machine History Viewer Web Service.

Note

You must specify the computer name where the Machine History Viewer Web Service is installed, if you are installing only the Machine History Viewer Client User Interface.

14. On the Start Copying Files screen, click Next to install the software components listed.

The Setup Status screen displays a progress bar.

15. When the URL displays, make a note of the address so you can access Machine History Viewer.

Example: `http://Servername/MachineHistory` where Servername is the name of the computer where Machine History Viewer is installed.

Machine History Viewer URL:	
------------------------------------	--

Note

If you are unable to log in, follow the instructions in Internet Explorer Help to enable cookies for this URL.

16. Click Finish to complete the installation.

4.1.3 Launch Machine History Viewer

Prerequisites

- Verify the client computer meets the operating requirements for a workstation.
- Use Internet Explorer 7.0 or newer with cookies enabled for the URL displayed during installation.
- In RBM Network Administration, create an AMS Machinery Manager username and password to use with Machine History Viewer.
- In RBM Network Administration, add a database to the user's database list, or allow the user to access the master database list. If the user does not have a database, no data will be visible to this user through Machine History Viewer.

Procedure

1. Launch Internet Explorer and enter the URL address you recorded during installation.
2. Log in with a user name and password.

More information about using Machine History Viewer is provided in Online Help available after you log in.

4.2 Install AMS Standalone Data Transfer

AMS Standalone Data Transfer allows you to transfer route files between an analyzer and a folder on the computer or network. You do not need direct access to an AMS Machinery Manager client or database. When you receive a route definition file, load it to your analyzer with AMS Standalone Data Transfer. After you collect data, dump the route using AMS Standalone Data Transfer and return the route data file.

Note

Only install AMS Standalone Data Transfer on a computer where AMS Machinery Manager is NOT installed.

Procedure

1. Insert the AMS Machinery Manager Software Installation DVD and open it in Windows Explorer.
2. Browse to Install/StandaloneDataTransfer.
3. Double-click setup.exe and continue through the installation.

Important

On Windows 7, right click setup.exe and select Run as administrator.

4. Accept the license agreement.
5. Follow instructions presented by the installation program.
Windows Device Driver Installation Wizard prompts you to install the CSI USB Drivers.
6. Install the CSI USB Drivers.
7. Follow instructions presented by the installation program.
8. At the Windows Security prompt, click Install to install the drivers.
9. Click Finish.
The CSI USB Drivers installation wizard closes.
10. Click Finish.

4.3 Install AMS Machinery Manager ODBC Driver

You can install the AMS Machinery Manager ODBC driver in order to access your information from third party software such as Microsoft Access™, Crystal Reports™, or ORACLE®. Note that the ODBC driver only works with the 32-bit version of Microsoft Access.

Note

This installation is optional and not required by AMS Machinery Manager.

Procedure

1. Go to the computer where you want the driver installed.

You can install the driver on any computer where the AMS Machinery Manager Client is installed.
2. Insert the AMS Machinery Manager Software Installation DVD and open it in Windows Explorer.
3. Browse to the Install\csiODBC folder.
4. Double-click setup.exe and continue through the installation.

Important

On Windows 7, right click setup.exe and select Run as administrator.

5. Accept the license agreement.
6. When the Choose Destination Location screen appears, use the default location, and click Next.
7. In the Ready to Install Program screen, click Next to begin the installation.

The Setup Status screen displays the status of the installation.
8. When the Installation Complete screen appears, click Finish.

If the screen displays a message to restart the computer, you must restart the computer before attempting to use the software.

4.4 Install AMS Machinery Manager CSI Data Provider

The AMS Machinery Manager CSI Data Provider works with AMS Machinery Manager Network Server to supply information to applications such as AMS Asset Portal and AMS Asset Performance Management. AMS Machinery Manager sends Assets, Active Alerts and Event History. The Alert details are generated from alarms that are set in the databases, such as the Vibration alarms for Export. Event details are generated from RBMview when a new problem is created.

Verify you have a version of AMS Machinery Manager that supports your application:

- AMS Machinery Manager version 4.81 or later is required to support AMS Asset Portal 1.0 or newer.
- AMS Machinery Manager 5.5 or later is required to support AMS Asset Performance Management.

4.4.1 Install Internet Information Services (IIS)

Install Internet Information Services (IIS) with the following features:

- IIS Management Console
- IIS Application Development Features (World-wide Web Services)
 - .NET Extensibility
 - ASP
 - ASP.NET
 - ISAPI Extensions
 - ISAPI Filters
 - Server-side Includes

Tip

On Windows 7, open Control Panel, select Turn Windows Features On or Off and select the features from Internet Information Services and World Wide Web Services.

4.4.2 Install CSI Data Provider

Install the CSI Data Provider on the same computer as the AMS Machinery Manager Network Server or on a different computer with network access to the Network Server.

Prerequisites

An AMS Machinery Manager Client must be installed on the Network Server computer.

The CSI Data Provider version must match the Network Server.

CSI Data Provider requires the Microsoft .NET Framework 4.0, available during the installation. IIS must be installed before Microsoft .NET Framework 4.0.

Procedure

1. Go to the computer where the AMS Machinery Manager Network Server is installed, or a computer with network access to the Network Server.
2. Insert the AMS Machinery Manager Software Installation DVD and open it in Windows Explorer.
3. Browse to Install\CSIDataProvider.
4. Double-click setup.exe and continue through the installation.

Important

On Windows 7, right click setup.exe and select Run as administrator.

5. Accept the license agreement and click Next.
6. Continue through the installation steps and follow prompts.

The installation program checks the minimum system requirements for the software. If the computer is missing any required software, you will be prompted to install the necessary software.

7. On the Disk Space Requirements screen, review this information and click OK.
8. On the Choose Destination Location page, use the default location and click Next.
9. When prompted, enter the name of the computer running Network Server and click Next.

The Data Provider must be able to locate the Network Server to function properly.

10. When prompted, install and start the CsiRVWmgr service on the Network Server.

Complete the following steps on the Network Server.

- a. On the Network Server, launch the Windows Command Prompt as Administrator.

Tip

On Windows 7, click Start > Accessories > Command Prompt, right-click Command Prompt and select Run as Administrator.

- b. In the Command Prompt window, type `C:\RBMnet\RBMsuite\sys\RVWmgr.exe -i` and press Enter.

Example:

```
Microsoft Windows [Version 6.1.7601]
Copyright (c) 2009 Microsoft Corporation. All rights reserved.
```

```
C:\Windows\system32>C:\RBMnet\RBMsuite\sys\RVwMgr.exe -i
```

```
C:\Windows\system32>
```

The CsiRVWmgr service is installed as a Windows Service.

- c. On the Network Server, launch Windows Services.
- d. Right-click the service named CsiRVWmgr and select Properties.
- e. In the Properties dialog, choose Automatic from the Startup type menu.

This setting ensures the service restarts automatically if it is ever stopped, such as after a reboot.

- f. Click Start to start the CsiRVWmgr service.

The CsiRVWmgr service is installed and started.

11. Click OK to continue the installation.
12. When the URL displays, make a note of the address.

Example: `http://Servername/CSIDataProvider/CSIDataProvider.asmx`, where Servername is the name of the computer where CSI Data Provider is installed.

You will need to use the URL to access the CSIDataProvider web service and register the AMS Machinery Manager user.

Table 4-1: CSI Data Provider URL

CSI Data Provider URL:	
-------------------------------	--

13. Click Finish.

4.4.3 Create a user for CSI Data Provider

See *Create a new user* in AMS Machinery Manager Help for details.

Procedure

1. In RBM Network Administration, create a new user with guest access mode.

Important

Only use this username and password with CSI Data Provider. If these credentials are used by some other user or application, the CSI Data Provider cannot access the system.

2. In RBM Network Administration, right-click the new user and select Edit User.
3. Click User Database List.

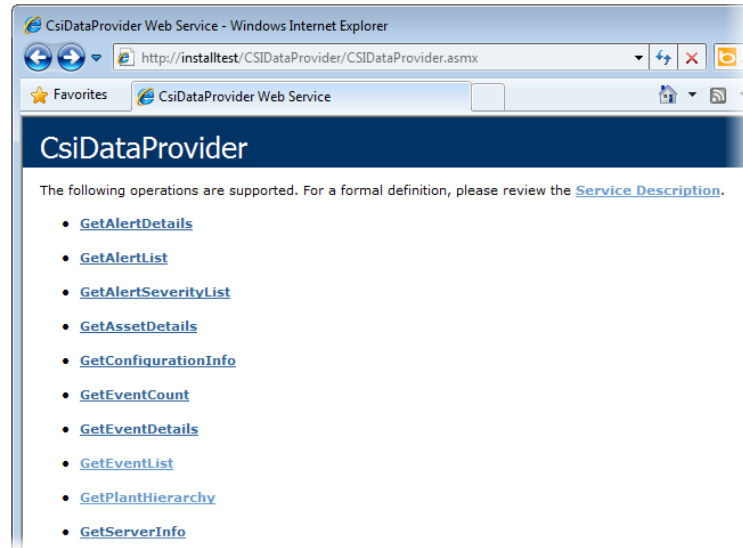
The Database List dialog appears.
4. To add a database, select the database from the System Databases pane and click Add.
5. Click OK.

4.4.4 Register the user for CSI Data Provider

1. Launch Internet Explorer and type the web address displayed during installation.

Example: `http://Servername/CSIDataProvider/CSIDataProvider.asmx`, where Servername is the name of the computer where CSI Data Provider is installed.

The CSI Data Provider web interface appears.



2. Click the GetPlantHierarchy link.
3. On the GetPlantHierarchy page, enter the AMS Machinery Manager user name and password in the format: username|password

For example, if "AOXS" is the user name and "aoxspwd1" is the password, enter: AOXS|aoxspwd1.

GetPlantHierarchy

Test

To test the operation using the HTTP POST protocol, click the 'Invoke' button.

Parameter	Value
credentials:	<input type="text" value="AOXS aoxspwd1"/>

4. Click Invoke.

A window displays a stream of XML statements. This is proof that you successfully registered the user and CSI Data Provider is functioning properly.

Note

If you get an error message, ensure that the CsiRVWmgr service is started and the user name has been created with the password you entered.

4.4.5 Create a data source

Use the AMS Asset Performance Management (or Asset Portal Manager for use with AMS Asset Portal) to create a data source. Refer to the respective product documentation for more information.

4.4.6 Configure Web Server settings

In order for the CSI Data Provider to work correctly, the World Wide Web Publishing service must be configured correctly.

Procedure

1. Open Windows Services and start the service named World Wide Web Publishing Service.

When you install the World Wide Web Publishing Service with Windows Server, it may not be started by default. You must start the service in order to run a web service.

2. Enable ASP.NET to execute.

By default, the Web Service Extension status for ASP.NET is Prohibited. In IIS Manager, change the status to Allowed.

Follow instructions for your version of IIS to enable ASP.NET. For example, follow these instructions in IIS 7.0.

- a. Launch IIS Manager.
 - b. Select the computer name node in the Connections pane.
 - c. In the Features view, select ISAPI and CGI Restrictions.
 - d. Select the ASP.NET service and change the status to Allowed.
3. Add CSIDataProvider to the Trusted Sites.

The first time the CSIDataProvider service runs, a security warning may appear. Add this website to the computer's trusted sites.

From this point, the CSIDataProvider will be granted access to this site.

4.5 Install CSI USB drivers

The USB drivers for the AMS 2140 analyzer are installed automatically with AMS Machinery Manager or AMS Standalone Data Transfer. You can install the USB drivers on any computer where you need to connect an AMS 2140 analyzer.

Procedure

1. Insert the AMS Machinery Manager Software Installation DVD and open it in Windows Explorer.
2. Browse to Install\CSI USB Drivers.
3. Double-click setup.exe and continue through the installation.

Important

On Windows 7, right click setup.exe and select Run as administrator.

4. Accept the license agreement.
5. Follow instructions presented by the installation program.
6. At the Windows Security prompt, click Install to install the drivers.
7. Click Finish.

5 AMS Machinery Manager services

Topics covered in this chapter:

- [Primary server features and services](#)
- [Secondary server features and services](#)
- [Client installation features](#)

5.1 Primary server features and services

The Primary server is the computer hosting the Network Server.

Feature installed	Service installed	Description	Purpose
Standalone or Network Server	CsiNetAdmin	Network Server	Licensing
	CSI_MhmRemote	AMS Remote Machinery Health Manager	Manages connections between AMS Machinery Manager Clients and the Network Server.
	CSI Data Transfer Service	Data Transfer Service	Enables Machinery Health Analyzers to connect and transfer data to AMS Machinery Manager over an Ethernet connection.
	CSIMtDbMgr Service	Database Server	Database read/write/indexing
AMS Machinery Manager Client	n/a		AMS Machinery Manager user interface.
Collaboration Tool (optional)	MHM Peer Resolver Service	Collaboration Tool communication management	When installed on the Network Server, this service enables communication between AMS Machinery Manager users with Collaboration Tool installed on their workstation.

5.2 Secondary server features and services

One or more of these features can be installed on a computer in the AMS Machinery Manager network after a Network Server has been installed.

Feature installed	Service installed	Purpose
Database Server	CSIMtDbMgr Service	Database read/write/indexing

Feature installed	Service installed	Purpose
Data Import Server	CSI Data Import Service ATG Service	The CSI Data Import Service enables AMS Machinery Manager to read MODBUS data from other systems. The ATG Service enables transient data collected from the AMS 6500 ATG to be available for storage in the AMS Machinery Manager database. The ATG Service can handle up to 10 AMS 6500 ATG devices.
Online Server	CsiO_Server	Enables AMS Machinery Manager to manage and collect data from Machinery Health Monitors.
AMS Machinery Manager Client	n/a	AMS Machinery Manager user interface.

5.3 Client installation features

One or more of these features can be installed after the Primary server has been installed.

Additional installation	Service installed	Purpose
Collaboration Tool	n/a	Available with network client installations to allow AMS Machinery Manager users to communicate.
Online Watch	n/a	A client application provides a read-only view of online system status. Can also be configured to allow a user to acknowledge or modify alarms and request data acquisitions.
Machine History Viewer	n/a	Provides a read-only view of periodic data and equipment case history through a web browser.
AMS Standalone Data Transfer	n/a	Allows users of Machinery Health Analyzers at a location without access to a database to load and dump routes and route data as files.

6 Configure network computer communication

Topics covered in this chapter:

- [Configure firewall settings](#)
- [Service accounts](#)

If services running on secondary servers have trouble establishing a connection with the primary server, you can change firewall settings to allow the services to communicate with one another. You can also create service accounts to assign to each AMS Machinery Manager program and service.

6.1 Configure firewall settings

AMS Machinery Manager programs communicate with each other using communication ports. If you have a firewall, the ports used by the AMS Machinery Manager programs are often blocked (or disallowed) by default. During installation, Windows may prompt you to allow access for certain AMS Machinery Manager programs on the server. If you choose to allow access, Windows creates firewall exceptions. You may need to configure other firewall rules manually. Configure your firewall program to allow communication between AMS Machinery Manager programs and the ports they use on each computer in the AMS Machinery Manager network.

Note

Each AMS Machinery Manager program needs a firewall exception to access the primary server, even if all the programs are installed on the primary server.

6.1.1 Primary server ports

These services make up the core programs installed as a Standalone or Network installation.

Table 6-1: Primary server ports

Port name	Port	Type	Direction	Service	Executable	Connection	Purpose
CSIDB_SERVER	10045	TCP	Bi-directional	CsiMtdbMgr	mtdbmgr.exe	server services, client programs	Database read/write/indexing
CSIDB_ADMIN	10046	TCP	Bi-directional	CsiMtdbMgr	mtdbmgr.exe	server services, client programs	CsiMtdbMgr

Table 6-1: Primary server ports (continued)

Port name	Port	Type	Direction	Service	Executable	Connection	Purpose
CSINA_SERVER	10047	TCP	Bi-directional	CsiNetAdmin	NetAdmin.exe	server services, client programs	Licensing
CSINA_ADMIN	10048	TCP	Bi-directional	CsiNetAdmin	NetAdmin.exe	server services, client programs	Licensing
CSINA_PEER	10049	TCP	Bi-directional	CsiNetAdmin	NetAdmin.exe	server services, client programs	Licensing
CSIMHMREMOTE	10052	TCP	Bi-directional	CSI_MhmRemote	MhmRemote.exe	server services, client programs	Manage AMS Machinery Manager Client connections.
CSIRBMCOMSR	10077	TCP	Bi-directional	CSI Data Transfer Service	DeviceServer.exe	CSI and AMS analyzers using Ethernet	Enable data transfer over Ethernet.

6.1.2 Ports for Microsoft Azure cloud installations

Table 6-2: Ports for Microsoft Azure cloud installations

Port name	Port	Type	Direction	Service	Executable	Connection	Purpose
CSIMHMREMOTE	10053	TCP	Bi-directional	MhmRemote.exe	DeviceServer.exe	Manage AMS Machinery Manager Client connection	Manage AMS Machinery Manager cloud Client connection to cloud Network Server.
CSIRBMCOMSR	10077	TCP	Outbound	CSI Data Transfer Service	DeviceServer.exe	AMS 2140 analyzers using Ethernet	Enable data transfer over Ethernet.
Remote Desktop Protocol	52800	TCP	Bi-directional	--	--	Virtual hosts and remote desktop connection	Enable remote connection to virtual hosts.

6.1.3 Ports for Data Import server

Table 6-3: Ports for Data Import server

Port name	Port	Type	Direction	Service	Executable	Connection	Purpose
CSIDISERVER	10060	TCP	Bi-directional	CSI Data Import Service	DataImport.exe		Provides Machinery Health Manager MODBUS Data Import.
ATG Service	3798	TCP	Bi-directional	ATGService			ATG Service
ATG Service	4841	TCP	Bi-directional	ATGService			ATG Configuration Port
CSIDISERVER	502	Mod bus	Bi-directional	CSI Data Import Service	DataImport.exe		Provides Machinery Health Manager MODBUS Data Import.

6.1.4 Database Server ports

Firewall ports required for additional database servers installed on the AMS Machinery Manager network.

Table 6-4: Database Server ports

Port name	Port	Type	Direction	Service	Executable	Connection	Purpose
CSIDB_SERVER	10045	TCP	Bi-directional	CsiMtdbMgr	mtdbmgr.exe	server services, client programs	Database read/write/indexing
CSIDB_ADMIN	10046	TCP	Bi-directional	CsiMtdbMgr	mtdbmgr.exe	server services, client programs	Database read/write/indexing
CSIMHMREMOTE	10053	TCP	Bi-directional	CSL_MhmRemote	MhmRemote.exe	server services, client programs	Manage AMS Machinery Manager Client connections.

6.1.5 Ports for Collaboration Tool server

Table 6-5: Ports for Collaboration Tool server

Port name	Port	Type	Direction	Service	Executable	Connection	Purpose
HTTP	8090	TCP	Bi-directional	MHM Peer Resolver Service	MHMPeerResolverService.exe	client programs	Handles registration of Collaboration Tool clients to communicate with one another.

6.1.6 CSI Data Provider ports

Table 6-6: CSI Data Provider ports

Port name	Port	Type	Direction	Service	Executable	Connection	Purpose
CSIVW_SERVER	10050	TCP	Bi-directional	CsiRVWmgr	RVWmgr.exe	Asset Portal, external programs	Provides alert information.
CSIVW_ADMIN	10051	TCP	Bi-directional	CsiRVWmgr	RVWmgr.exe	Asset Portal, external programs	Provides alert information.
HTTP	80	TCP	Bi-directional	IIS	inetinfo.exe	Asset Portal, external programs	Provides alert information.

6.1.7 Ports for Machine History Viewer server

Table 6-7: Ports for Machine History Viewer server

Port name	Port	Type	Direction	Service	Executable	Connection	Purpose
HTTP	80	TCP	Bi-directional	IIS	inetinfo.exe	external programs	Provides web access to case histories.

6.1.8 Ports required for servers hosting a shared Custdata folder

Table 6-8: Ports required for servers hosting a shared Custdata folder

Port name	Port	Type	Direction	Service	Executable	Connection	Purpose
epmap	135	TCP	Bi-directional	DCE endpoint resolution	SYSTEM	external programs	Windows File Sharing
epmap	135	UDP	Bi-directional	DCE endpoint resolution	SYSTEM	external programs	Windows File Sharing
netbios-ns	137	TCP	Bi-directional	NETBIOS Name Service	SYSTEM	external programs	Windows File Sharing
netbios-ns	137	UDP	Bi-directional	NETBIOS Name Service	SYSTEM	external programs	Windows File Sharing
netbios-dgm	138	UDP	Bi-directional	NETBIOS Datagram Service	SYSTEM	external programs	Windows File Sharing
netbios-ssn	139	TCP	Bi-directional	NETBIOS Session Service	SYSTEM	external programs	Windows File Sharing
microsoft-ds	445	TCP	Bi-directional	Microsoft Directory Service	SYSTEM	external programs	Windows File Sharing
microsoft-ds	445	UDP	Bi-directional	Microsoft Directory Service	SYSTEM	external programs	Windows File Sharing

6.1.9 Ports required for AMS Machinery Manager Clients and Data Import Clients

Table 6-9: Ports required for AMS Machinery Manager Clients and Data Import Clients

Port name	Port	Type	Direction	Service	Executable	Connection	Purpose
.exe	varies	TCP	Bi-directional	MHM client programs	C:\RBMclient\sys.exe C:\RBMsuite\sys*.exe	server services, online systems	Each AMS Machinery Manager program.

6.1.10 Online Server ports

Table 6-10: Online Server ports

Port name	Port	Type	Direction	Service	Executable	Connection	Purpose
odh_4500T	19788	TCP	Bi-directional	CsiO_Server	O_Server.exe	online systems	Online system communication.
odh_4500su	19798	TCP	Bi-directional	CsiO_Server	O_Server.exe	online systems	Online system communication
odh_4500_tcp	19799	TCP	Bi-directional	CsiO_Server	O_Server.exe	online systems	Online system communication
odh_4500_udp	19799	UDP	Bi-directional	CsiO_Server	O_Server.exe	online systems	Online system communication
odh_admin_tcp	19800	TCP	Bi-directional	CsiO_Server	O_Server.exe	online systems	Online system communication
odh_config_tcp	19801	TCP	Bi-directional	CsiO_Server	O_Server.exe	online systems	Online system communication
odh_status_tcp	19802	TCP	Bi-directional	CsiO_Server	O_Server.exe	online systems	Online system communication
odh_status_udp	19802	UDP	Bi-directional	CsiO_Server	O_Server.exe	online systems	Gross Scan broadcast
odh_fallback_tcp	19803	TCP	Bi-directional	CsiO_Server	O_Server.exe	Fallback server	Fallback server (legacy, no longer used)

6.1.11 Ports for OPC data

Online Systems can be configured to provide data to control systems using OPC (Object Linking and Embedding for Process Control). The ports used by the Online Server to provide OPC data are assigned dynamically from the range of DCOM ports Windows is configured to use. These ports are not required to be open if tunneling software is used.

Table 6-11: Ports for OPC data

Port name	Port	Type	Bi-directional	Service	Executable	Connection	Purpose
epmap	135	TCP	Bi-directional	DCE endpoint resolution	SYSTEM	external programs	Windows File Sharing
epmap	135	UDP	Bi-directional	DCE endpoint resolution	SYSTEM	external programs	Windows File Sharing
-	varies	TCP	Bi-directional	CsiO_Server	O_Server.exe	external programs	Provides OPC information

6.1.12 FTP ports

Servers set up to provide firmware updates to online systems use FTP ports.

Table 6-12: FTP ports

Port name	Port	Type	Direction	Service	Executable	Connection	Purpose
FTPDATA	20	TCP	Bi-directional	FTP data connection	inetinfo.exe	external programs, online systems	FTP data transfer
FTP	21	TCP	Bi-directional	FTP control connection	inetinfo.exe	external programs, online systems	FTP data transfer

6.1.13 Optional ports for troubleshooting

Table 6-13: Optional ports for troubleshooting

Port name	Port	Type	Bi-directional	Service	Executable	Connection	Purpose
Telnet	23	TCP	Bi-directional	Telnet client	varies	external systems	Telnet
ICMP	-	-	Bi-directional	Ping	SYSTEM	external systems	Ping

6.2 Service accounts

Service accounts are not required, but can be useful on a network system if services running on secondary servers have trouble establishing a connection with the primary server. Try updating the firewall settings first. If changing the firewall settings does not resolve the issue, you can create service accounts to assign to each AMS Machinery Manager program and service.

After you install AMS Machinery Manager on the server, create a service account on the server and assign it to each AMS Machinery Manager service. Then create an identical account on each computer where AMS Machinery Manager services are installed. This includes any computer where you install any AMS Machinery Manager features, but not computers where you install only the AMS Machinery Manager Client. The Client does not have a service.

6.2.1 Create a service account

Create a service account after installing AMS Machinery Manager.

Prerequisites

Verify you can launch the AMS Machinery Manager Client.

Procedure

1. Follow your operating system's instructions to create a new user account with the following information:
 - User name: MHMSERVICE
 - Password: *****
 - Clear the check box User must change password at next logon.
 - Select User cannot change password.
2. Add the MHMSERVICE user as a member of the computer's Administrators group.

Postrequisites

Assign this services account to all AMS Machinery Manager services on the computer.

6.2.2 Assign the services account to each AMS Machinery Manager service

Assign the services account to each AMS Machinery Manager service on the computer.

Procedure

1. Launch Windows Services on a computer where AMS Machinery Manager programs are installed.
2. Identify the AMS Machinery Manager services to be updated.
3. Right-click the service and select Properties.
4. In the Properties dialog, select the Log On tab, and update the log on information so the service operates using the services account.
 - This account: .\MHMSERVICE (The dot and backslash are required before the username.)
 - Password: *****

Note

The password you enter must match the password assigned to the account.

5. Restart the service.
6. Repeat this procedure for each AMS Machinery Manager service.

Postrequisites

You can test the services account by launching the AMS Machinery Manager Client. If the Client launches, the accounts have been created and assigned correctly. If it does not launch, there may be a problem with one of the users. If you do not have a Client installed, test the specific service by verifying its functionality works.

6.2.3 Change the ATG service user account

You need to change the user account for the ATG Service in the following scenarios:

- A secondary computer connects to the Data Import server.
- Data from the ATG Service is transferred from a secondary Data Import Server to the primary Network Server database.

Changing the ATG service user account allows data to pass freely between machines that use the service.

Note

You may also need to change the user account for `csiO_server` and `csiMHM_remote` services. See Knowledge Base Article NK-1400-0360 for more information.

Prerequisites

There should be a local administrator account named `CSIservers` on the Data Import server.

Procedure

1. On the Data Import server, run `Services`.
2. Right-click the ATG Service and select `Properties`.
3. Click the `Log On` tab and select the `This account` option.
4. Change the account to `CSIservers` and enter the password the user account.
5. Click `OK`.

Appendix A

File locations

File locations depend on the type of installation.

- Standalone systems use absolute paths (for example, C:\RBMSuite), because all the AMS Machinery Manager applications that use this path are installed on the same computer.
- Network systems use network paths (UNC format) (for example \\ServerName\RBMnet\RBMSuite), so applications on all AMS Machinery Manager Client workstations can access the files.

Standalone installation

All of the AMS Machinery Manager files are located in the installation directory, C:\RBMSuite, by default.

Table A-1: Standalone installation file types and locations

Category	Type	Location
Installation Directory	Folder	C:\RBMSuite
AMS Machinery Manager System Files	Executable	C:\RBMSuite\Sys
	Dynamic Linked Library	C:\RBMSuite\Sys\Plugins
	Error Messages	C:\RBMSuite\Sys\HelpMsg
	Help Files	C:\RBMSuite\Sys\HelpMsg
Drivers	Drivers	C:\RBMSuite\Sys\Drivers
System Data Files	System Data Files	C:\RBMSuite\SysData
	Template Files	C:\RBMSuite\SysData\Template
	Oil Instrument Files	C:\RBMSuite\SysData\Instrmnt
	Report Templates	C:\RBMSuite\SysData\Report
Customer Data Files	Shared Data Files	C:\RBMSuite\CustData
User Data Files	User Data Files	C:\RBMSuite\Users

Network installations

[Table A-2](#) and [Table A-3](#) show where to find files on each installation. The Network Server files are located in C:\RBMnet. The Network Server shared files are listed by UNC path (for example, \\Servername\RBMnet\RBMSuite\ where Servername is the network name of the Network Server computer). Each Client workstation has some files stored locally in C:\RBMclient\.

Table A-2: Network Single- or Multiple-License Server file types and locations

Category	Type	Location
Installation Directory	Folder	C:\RBMnet
Network Server Shared Folder	UNC Path	\\Servername\RBMnet
AMS Machinery Manager System Files	Executables	\\Servername\RBMnet\RBMsuite\Sys
	Dynamic Link Library	\\Servername\RBMnet\RBMsuite\Sys\Plugins
	Error Messages	\\Servername\RBMnet\RBMsuite\Sys\HelpMsg
	Help Files	\\Servername\RBMnet\RBMsuite\Sys\HelpMsg
Drivers	Drivers	\\Servername\RBMnet\RBMsuite\Sys\Drivers
System Data Files	System Data Files	\\Servername\RBMnet\RBMsuite\SysData
	Template Files	\\Servername\RBMnet\RBMsuite\SysData\Template
	Oil Instrument Files	\\Servername\RBMnet\RBMsuite\SysData\Instrmnt
	Report Templates	\\Servername\RBMnet\RBMsuite\SysData\Report
Customer Data Files	Databases	\\Servername\RBMnet\RBMsuite\CustData
User Data Files	User Data Files	\\Servername\RBMnet\RBMsuite\Users
	User Preferences	\\Servername\RBMnet\RBMsuite\Sys\AMS_Preferences\AMS_UserPreferences
CMMS Data Files	CMMS Shared Files	\\Servername\RBMnet\CMMSData

Table A-3: Network Client file types and locations

Category	Type	Location
Installation Directory	Folder	C:\RBMclient\
AMS Machinery Manager System Files	Executable	C:\RBMclient\Sys
	Dynamic Link Library	C:\RBMclient\Sys\Plugins
	Error Messages	C:\RBMclient\Sys\HelpMsg
	Help Files	C:\RBMclient\Sys\HelpMsg
Drivers	Drivers	C:\RBMclient\Sys\Drivers
System Data Files	System Data Files	C:\RBMclient\Sys\SysData
	Template Files	C:\RBMclient\Sys\SysData\Template
	Oil Instrument Files	C:\RBMclient\Sys\SysData\Instrmnt
	Report Templates	C:\RBMclient\Sys\SysData\Report
Customer Data Files	Databases	\\Servername\RBMnet\RBMsuite\CustData
User Data Files	User Data Files	\\Servername\RBMnet\RBMsuite\Users

Table A-3: Network Client file types and locations (continued)

Category	Type	Location
	User Preferences	C:\RBMclient\Sys\AMS_Preferences\AMS_UserPreferences
CMMS Data Files	CMMS Shared Files	\\Servername\RBMnet\CMMSData

File Descriptions

Table A-4: File category and type descriptions

Category	Type	Description
System Files	Executables (*.exe)	AMS Machinery Manager applications.
	Dynamic Link Libraries (*.dll)	Shared AMS Machinery Manager run-time libraries.
	OCX files (*.ocx)	Shared AMS Machinery Manager object libraries.
	Compressed help files (*.chm)	The help files and manuals.
System Data Files	CSI Component Files (*.wh)	Warehouse files store reusable components and equipment configurations.
	Report Templates (*.rpt)	Report templates for RBMview.
User Data Files	Program Configuration Files (*.def, *.ini)	Configuration files that store user options and preferences for the applications.
CMMS Data Files	CMMSLink Files (*.mdb)	Define the interface to CMMS systems and facilitate the exchange of information to and from CMMS systems.
Customer Data Files	AMS Machinery Manager databases beginning version 4.xx (*.rbm)	AMS Machinery Manager databases.
	Writable DbLookup Files	These provide global reference information such as fault codes and severity descriptions. If used in a Network Multiple-License installation, these files are located on the Enterprise data directory.
	NetAdmin Files	These files are used for user access administration.
	RBMwizard Answers Files/Equipment Configuration Files (*.dbz)	RBMwizard databases that store database setup and equipment configuration information.
	Oil Reference Files (*.ref)	Oil reference information.

Table A-4: File category and type descriptions (continued)

Category	Type	Description
	Database Files (*.mdb)	AMS Machinery Manager database files, except RBMview database files. RBMview databases created as of AMS Machinery Manager v6.3 use the *.accdb file format. RBMview databases created with versions prior to v6.3 use *.mdb file format. If you want to upgrade *.mdb databases to *.accdb, contact Product Support.
	External Envelope Files (*.env)	Generated by Autostat and contain mainly statistical envelope alarms created by Autostat. Plotdata, Export, and Nspectr retrieve the alarms from the file during analysis.
	User Component Files (*.wh)	User-defined warehouse files that store reusable components and equipment configurations.
	Images (*.bmp, *.pcx, *.tga, *.ann, *.eif, *.jpg, *.tiff)	Images used for plot captures, IR thermography images, etc.
	Diagrams (*.bmp)	Images used for equipment diagrams.
	Log Files (*.log)	Log files store information about applications and operations helpful for troubleshooting.
	Database Archives (*.zip)	Databases archived using the AutoZip utility.
	Online Database Template (*.cvb)	Template of a database for Online technology for use with Online Configuration.
	Online Transient Archive (*.bin)	Archive files for transient data collected with a Machinery Health Monitor. These files are saved in a database's Archive folder.
	Portable Transient Archive (*.wfv *.tft)	Archive files for transient data collected with a Machinery Health Analyzer. These files are saved in a database's TransWF folder.
Additional Files	csi.ini	Configuration file for AMS Machinery Manager applications in the Tools tab.
	csiports.ini	Defines the TCP/IP port numbers on which the database server and network administration server communicate.
	DBLookup.mdb	Quick reference file that stores the fault framework, component types, and other lists used by the applications.
	enable.tbl	Determines the number of users allowed and other factors that are license-dependent.
	mhm.exe	Launches the AMS Machinery Manager Client.
	mhm.exe.config	Main configuration file for AMS Machinery Manager applications and settings.
	rbm.exe	Main menu application for AMS Machinery Manager.

Table A-4: File category and type descriptions (continued)

Category	Type	Description
	RBMAdmin.exe	AMS Machinery Manager Network Administration.

Appendix B

Register AMS Machinery Manager

Topics covered in this appendix:

- [Register AMS Machinery Manager - Standalone system](#)
- [Register AMS Machinery Manager - Network system](#)

You can register the software when prompted during installation. Or, you can cancel the registration process, continue the installation, and register later.

Note

You must also register the software during a software update or repair.

B.1 Register AMS Machinery Manager - Standalone system

Prerequisites

Log on as a Windows administrator user on the computer where you installed AMS Machinery Manager.

Close AMS Machinery Manager Client.

In Windows Services, stop AMS Machinery Manager services, CsiNetAdmin and CSIMtDbMgr Service.

Procedure

1. In Windows Explorer, go to C:\RBMSuite\sys and double-click `Serial.exe`.
2. In the Serial dialog, click Register Product.

The Register Product dialog appears. You need the Serial No. and Request No. during registration.

3. Contact Product Support to register.

Phone: Toll free 888.367.3774, option 2 (U.S. and Canada)
+63.2.702.1111 (Rest of world)

Email: wwcs.custserv@emerson.com

Web: <http://www.emerson.com/machineryhealthreg>

4. Enter the Response code given to you by a Product Support representative.

The code is only valid for your computer.

5. Click OK.
6. In the Serial dialog, verify the Status is "Registered."
7. Click Close.

Your software is registered.

Postrequisites

Launch AMS Machinery Manager.

B.2 Register AMS Machinery Manager - Network system

Prerequisites

Log on as a Windows administrator user on the computer where you installed AMS Machinery Manager Network Server.

Close AMS Machinery Manager Client.

In Windows Services, stop AMS Machinery Manager services, CsiNetAdmin and CSIMtDbMgr Service.

Procedure

1. In Windows Explorer, go to C:\RBMnet\RBMsuite\sys and double click `Serial.exe`.
2. In the Serial dialog, click Register Product.

The Register Product dialog appears. You need the Serial No. and Request No. during registration.

3. Contact Product Support to register.

Phone: Toll free 888.367.3774, option 2 (U.S. and Canada)
+63.2.702.1111 (Rest of world)

Email: wwcs.custserv@emerson.com

Web: <http://www.emerson.com/machineryhealthreg>

4. Enter the Response code given to you by a Product Support representative.

The code is only valid for your computer.

5. Click OK.
6. In the Serial dialog, verify the Status is "Registered."
7. Click Close.

Your software is registered.

Postrequisites

Restart the services and launch AMS Machinery Manager.

Appendix C

Update the Machinery Health Monitor firmware

Topics covered in this appendix:

- [Install the firmware on the FTP server](#)
- [Reboot the Machinery Health Monitor](#)
- [Check the firmware version in AMS Machinery Manager](#)

Emerson periodically releases updates to firmware. When you update your AMS Machinery Manager software, it is a good practice to update the firmware if a new version is available. Refer to the Readme file (Readme.rtf) on the Software Installation DVD for information about the current firmware version. These instructions apply to the following Machinery Health Monitor systems:

- AMS 6500 Machinery Health Monitor
- AMS 2600 Machinery Health Expert
- CSI 4500 Machinery Health Monitor

C.1 Install the firmware on the FTP server

Prerequisites

You need the AMS Machinery Manager Software Installation DVD.

Procedure

1. Log on to the computer that hosts the FTP Server for your Machinery Health Monitor.
2. Insert the AMS Machinery Manager Software Installation DVD.
3. Open the DVD in Windows Explorer and browse to Install/Online Firmware.
4. Double-click setup.exe and continue through the installation.

Important

On Windows 7, right click setup.exe and select Run as administrator.

5. Accept the license agreement.
6. Select the type of installation.
 - Select Typical to install the firmware and tools.
 - Select Custom to choose to install either the firmware or the tools.

7. Follow instructions presented by the installation program.

The online firmware is installed in C:\inetpub\ftproot\bin\.

Postrequisites

Cycle the power on each Machinery Health Monitor that uses this FTP server.

C.2 Reboot the Machinery Health Monitor

Cycle power on the Machinery Health Monitor and verify the system is in good status after it boots.

Procedure

1. Cycle the power on each Machinery Health Monitor that needs to get the new firmware update from the FTP server.
2. Wait approximately 5 minutes for the system to complete the boot process.
3. Verify the system is powered on and in good status.

Refer to the Installation Manual specific to your hardware model for more information.

C.3 Check the firmware version in AMS Machinery Manager

1. Log on to AMS Machinery Manager Client with the Administrator user account or a user that has permission to use online technology.
2. Go to Tools > Setup/Communications > Online Configuration.

The Online Config window appears.

3. Go to File > Online Server > Open.

The Select Online Server Host Computer dialog appears.

4. Choose a server name from the menu and click OK.

The Online Server opens and a tree structure appears in the left pane of the Online Config window.

5. In the tree structure, expand Units folder, and right-click the icon next to the Machinery Health Monitor you want to check and select Properties.

The Unit Properties screen appears in the right pane and displays the State, Firmware Revision, DSP Revision, Total RAM, and Unit Type.

Figure C-1: Unit properties

Unit Properties	State: Node (Unit) Down
Abbreviation: 411-415	Description: Test
CPU Ethernet Address: 00 D0 C5 00 11 1C	
Firmware Revision:	
DSP Revision:	
Total RAM:	
Unit Type: CSI 4500M Machinery Health Monitor	

6. In the Unit Properties pane, verify State is Node (Unit)UP and Firmware Revision matches the version you installed.

Contact Product Support for help if the firmware version does NOT match.

Appendix D

Connect the AMS 2140 to the virtual host

Follow these steps to connect an AMS 2140 to a virtual host in the Microsoft Azure cloud. The AMS 2140 connection is different from when the Network Server is deployed in physical network versus in the Microsoft Azure cloud.

Procedure

1. Perform the following on the virtual host:
 - a. Open Windows Component Services and stop the CSI Data Transfer Service.

Emerson recommends stopping this service when your setup is in the cloud. This service should remain stopped while the Network Server is installed in the Microsoft Azure cloud.
 - b. Create a user in the Network Server that the AMS 2140 will use to log in.
 - c. Add an inbound rule for port 10077 for the Data Transfer Service. This port is configurable.

Usually ports 10045-10052 are opened for both inbound and outbound connections for the AMS Machinery Manager client. These ports are not required when only connecting to AMS Machinery Manager in the Microsoft Azure cloud.
2. Connect the AMS 2140 to the virtual host through Ethernet connection.
3. Perform the following on the AMS 2140:
 - a. Press Home > F5 (Comm Setup) > F1 (Set Connect Port) and choose Ethernet as the communication port.
 - b. Navigate to the job or route you want to send to the Network Server and then select Connect For Transfer.

This prompts a security warning in the Network Server. Add the exception.

Appendix E

Convert database schema

Perform these steps after upgrading from a previous version. After an upgrade, the schema of existing databases have to be updated to the new database structure that is used starting in v6.3. This tool only works with databases that were created prior to v6.3.

Prerequisites

Have the installation DVD ready.

Procedure

1. From the installation DVD, navigate to the Extras folder. Copy the 5.x DB Schema Converter folder to your computer. Then, launch 5xDBSchemaConverter.exe.

This launches the Database Schema Converter tool.

2. Browse to the RBM database you want to convert.

Any associated *.dbz file is automatically detected.

3. Click Start.

The old database files are backed up while the conversion is ongoing.

Emerson

835 Innovation Drive
Knoxville, TN 37932 USA
T +1 865-675-2400
F +1 865-218-1401
www.Emerson.com

©2019, Emerson.

The contents of this publication are presented for informational purposes only, and while every effort has been made to ensure their accuracy, they are not to be construed as warranties or guarantees, express or implied, regarding the products or services described herein or their use or applicability. All sales are governed by our terms and conditions, which are available on request. We reserve the right to modify or improve the designs or specifications of our products at any time without notice.

All rights reserved. The Emerson logo is a trademark and service mark of Emerson Electric Co. All other marks are property of their respective owners.

