

# NEW PRODUCTS EDITION

CATALOG 163 - ADDENDUM



Electrical • Data Com • HVAC • Plumbing • Telecom • Utility  
Heavy Infrastructure • Steel and Concrete Construction

[www.kleintools.com](http://www.kleintools.com)

# TABLE OF CONTENTS

WARRANTY .....04

WARNINGS .....05



**HAND TOOLS**

- Pliers.....7
  - Ironworker's Pliers.....7
- Strippers, Cutters, & Crimpers.... 8-9
  - Wire Strippers.....8
  - Cable Cutters.....9
  - Pocket Knife.....9
- Drivers & Wrenches... 10-14
  - Screwdrivers & Nut Drivers..... 10-12
  - Impact Sockets..... 13
  - Lineman's Wrenches... 14
  - Hammer..... 14
- Fish Tapes..... 15
- Laser Levels .... 16

**JOB SITE**

- Insulated Tools 18-19
- Personal Protection & Safety Equipment ....20-27
  - Safety Helmets..... 20-21
  - Safety Helmet Visors... 21
  - Hard Hats.....22-23
  - Safety Glasses..... 24
  - Safety Vests..... 25
  - Warming & Cooling Bands..... 25
  - Cooling Towel..... 25
  - Masks & Respirators... 26
  - Knee Pads..... 26
  - Gloves..... 27
- Illumination 28-30
  - Flashlights..... 28
  - Headlamps.....28-30
- Accessories..... 31
  - Tumbler..... 30
  - Rechargeable Speaker.. 31
  - Rechargeable Fan..... 31
- Tool Storage.. 32-33
  - Modular Pouches..... 32
  - Buckets..... 33

**ELECTRICAL TESTING & INSTALLATION TOOLS**

- Voice/Data/Video..... 35-37
- Punchdown Tools..... 35
- Cable Stapler & Staples..... 35
- Tone & Probe Test & Trace Kit..... 36
- Scout® Pro 3 Testers... 37
- Test & Measurement 38-42
  - Clamp Meters..... 38-39
  - Magnetic Hanger..... 39
  - Testing Kits..... 40
  - Infrared Thermometer..... 40
  - Non-Contact Voltage Testers..... 41
  - Borescope..... 42
  - GFCI Receptacle Tester..42
  - Thermal Imager..... 42

**CONSTRUCTION AND STRUCTURAL TOOLS**

- Impact Tools . 44-46
  - Impact Drill..... 44
  - Impact Wrench..... 45
  - Impact Sockets..... 46
- Grips.....47
  - Parallel Jaw Grip..... 47

A black and white portrait of an elderly man with a full white beard, wearing a dark suit, seated in a dark wooden chair. The background is dark and textured.

**The Founder of Electrical Hand Tools.**

A close-up of the American flag, showing the white stars and stripes with red stitching along the edges.

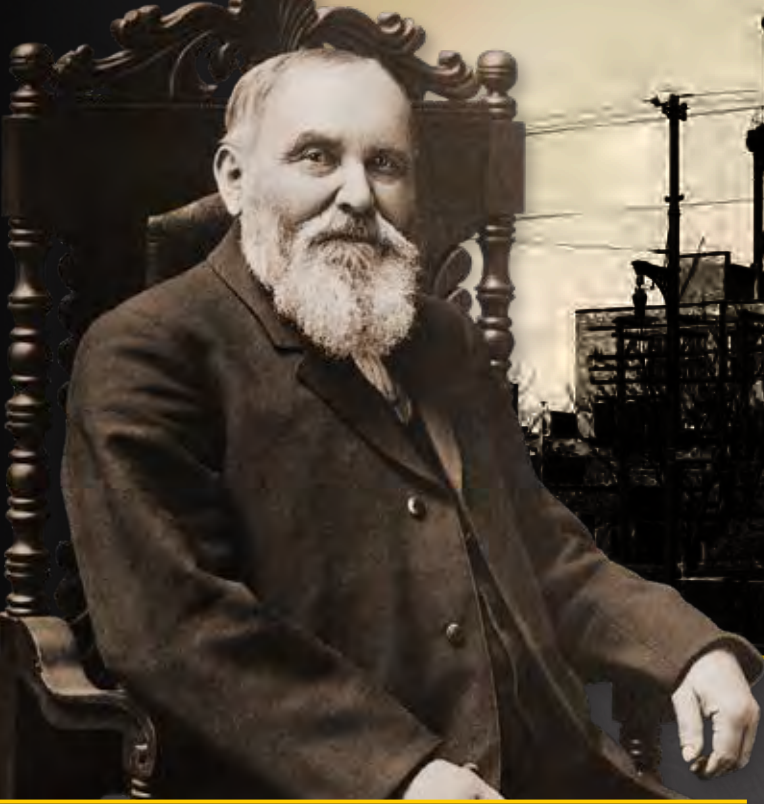
**Established in America. Still American.**

A close-up of a row of blue-handled tools, likely screwdrivers, with their metal shafts and tips visible, arranged in a tray.

**The #1 Preferred Tool In The Industry.**

**Can other tools say that?**





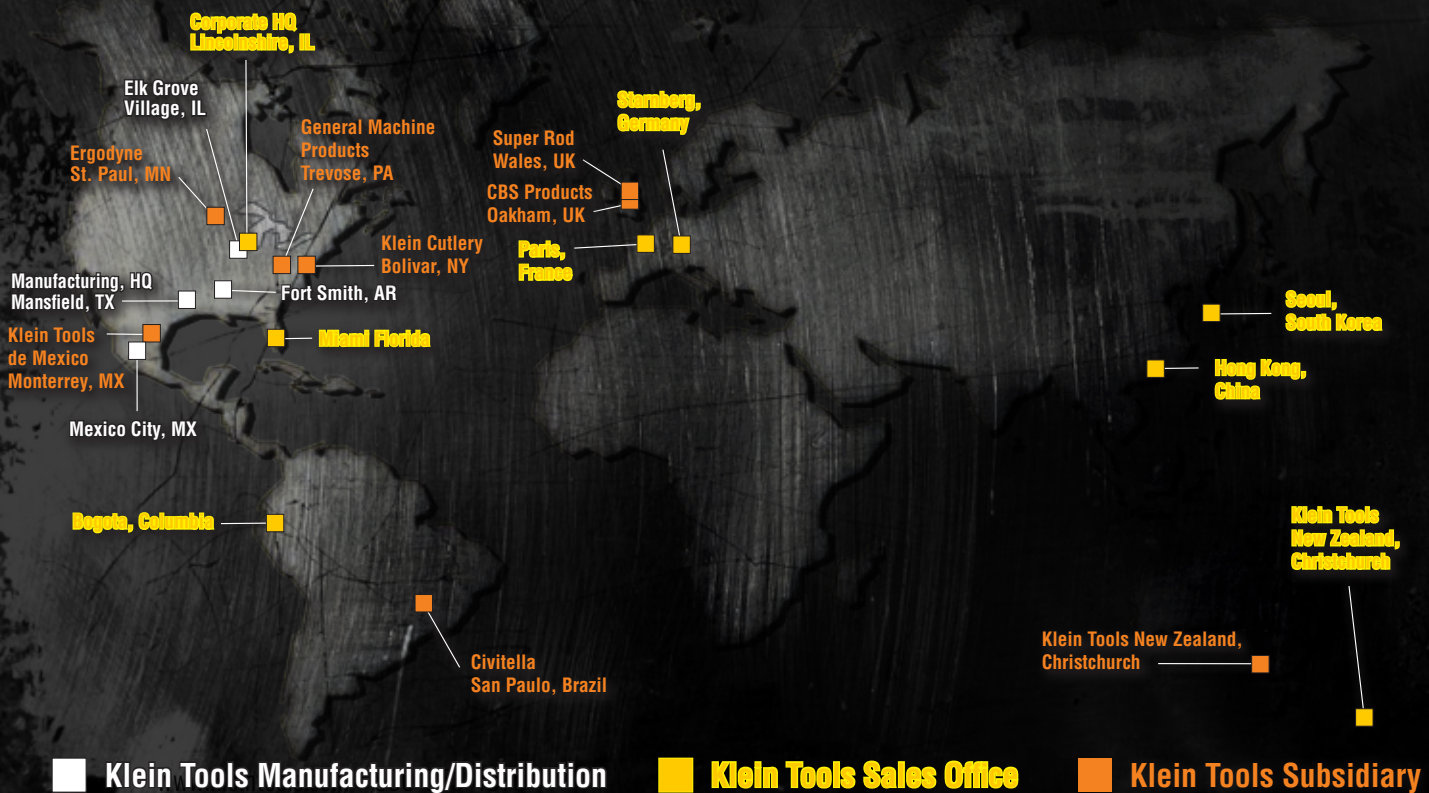
# COMPANY HISTORY

**K**lein Tools was founded in 1857 by an industrious German immigrant, Mathias Klein, who began in the hand tool business when a broken side-cutting pliers was brought to his forge shop by a telegraph

lineman. Mathias repaired the pliers by forging and finishing a new half for the tool and riveting it to the old half. Soon the lineman returned because the other original half of the pliers had broken and needed replacement. Mathias forged and finished the second half of the pliers and riveted it to the other replacement half – creating the first complete Klein pliers.

To this day, Klein Tools is proudly owned and managed by the Klein family. Over 160 years of hard work and dedication has earned Klein the reputation of supplying only the finest quality products for users of professional hand tools, Test and Measurement and occupational protective equipment.

**Klein Tools continues to expand domestically and internationally to provide quality products to professionals all over the world.**





# COMMITTED TO AMERICAN MANUFACTURING

## FOR OVER 160 YEARS

Klein Tools has remained dedicated to professional tradesmen worldwide, with a commitment to manufacturing the world's finest hand tools right here in America.

These days, it can be hard to find companies that make products you can count on. But that's exactly what you'll get from Klein Tools. We don't just make great products, we make great products that stand up to the demands of the professionals who use them every day. Because our standards are as high as yours, we demand that every one of our hand tools delivers all the performance, durability and precision that you need to get the job done right. And by using only the highest quality materials, superior workmanship, and keeping our manufacturing as close to home as we can, we're able to uphold those rigorous standards.

Klein isn't just the name of our company, it's also our family name, so we have to be proud of everything we make. And since we're an American company that's been family-owned and family-run, since 1857, you know you can count on us to be here tomorrow.

Just pick up a Klein tool and you'll know what all the professionals know... when you buy a Klein, it'll never let you down.

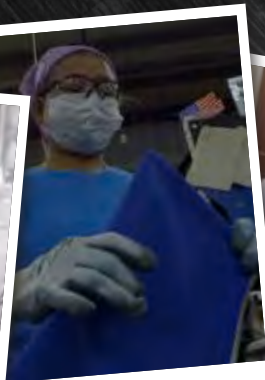
**That's why we're the #1 choice of professional electricians in the U.S.**



Mansfield, TX



Elk Grove Village, IL



Fort Smith, AR



Mansfield TX Distribution



Bolivar, NY



Treose, PA

## LIMITED WARRANTY

Klein Tools, Inc. warrants that the products set forth below will be free from defects in material and workmanship, under normal use for the time frames listed below (unless otherwise noted on the product packaging). At its option, Klein Tools will repair or replace, or refund the purchase price of, any product which fails to conform with this warranty. This warranty does not apply to damage from alterations, abuse, misuse, lack of maintenance, or normal wear and tear of the product. Proof of purchase from an Authorized Klein Tools Distributor is required for all warranty claims. This warranty does not apply to batteries.

**All implied warranties, including, without limitation, implied warranties of merchantability and implied warranties of fitness for a particular purpose, are limited in duration to the applicable warranty period listed below.**

Some states do not allow limitations on how long an implied warranty lasts, so the above limitation may not apply to you. This warranty is void where prohibited by law, and no claims will be honored where claimed products are controlled by export control or economic sanctions restrictions.

**In no event shall Klein Tools be liable for incidental or consequential damages.** Some states do not allow the exclusion or limitation of incidental or consequential damages, so the above limitation or exclusion may not apply to you.

This warranty gives specific legal rights, and you may also have other rights which vary from state to state.

### THE NORMAL LIFE OF THE PRODUCT

#### Hand Tools

This warranty explicitly does not cover Specialty Hand Tools. See Klein Commercial and Industrial products warranty.

#### Tool Pouches, Tool Bags, Tool Belts, Suspenders, Coolers, Soft Storage, Knee Pads

This warranty explicitly does not cover climbing tool belts. See Klein Commercial and Industrial products warranty.

#### Fish Tapes, Fish Rods, Tape Measures, Levels, Folding Rules

This warranty explicitly does NOT cover cut or deliberately damaged tape, rust or corrosion or foreign material, cracked or broken cases, or bent hooks or bent/missing eyelets.

#### Flashlights and Illumination

This warranty explicitly does not cover products containing rechargeable batteries.

### TWO YEARS FROM THE DATE OF PURCHASE

#### Electrical Test and Measurement Tools

This warranty explicitly does not cover High Voltage Test and Measurement Tools. See Klein Commercial and Industrial products warranty. Repair service is available for the ET510 Borescope.

### ONE YEAR FROM THE DATE OF PURCHASE

#### Flashlights and Illumination products containing rechargeable batteries.

(including but not limited to Flashlights, Illumination Products,

#### Audible Entertainment

### PRODUCTS WARRANTED TO BE FREE FROM DEFECTS IN MATERIALS AND WORKMANSHIP WHEN DELIVERED TO THE CUSTOMER

#### Consumables

(including but not limited to Triple-Taps, Drill Bits, Step Drills, Carbide Hole Cutters, Hole saws and Arbors, Saw Blades and Jab Saws, disposable Razor and Knife Blades, Stripper Cartridges, Gloves, Shoe Covers, Replaceable Cutting Inserts, Wire Marker Books, Bits and Blades, Voice/Data/Video Connectors, Klein Chemicals, Hand Cleaners, and Wire Pulling Lubricants)

This warranty explicitly does not cover Specialty Consumables. See Klein Commercial and Industrial products warranty.

## WARRANTY RETURNS

All warranty returns require proof of purchase from an Authorized Klein Tools Distributor and must include a Warranty Return Authorization (WRA) number. To obtain the WRA and service under this warranty, visit [www.kleintools.com/warranty](http://www.kleintools.com/warranty) or contact your Authorized Klein Tools Distributor.

## COMMERCIAL AND INDUSTRIAL PRODUCTS WARRANTY

Klein Tools, Inc. warrants that the products set forth below, which are manufactured and sold for commercial or industrial uses, are warranted to be free from defects in materials and workmanship for the periods of time set forth below (unless otherwise noted on the product packaging). **THERE ARE NO IMPLIED WARRANTIES OF MERCHANTABILITY OR FITNESS.** At its option, Klein will repair or replace, or refund the purchase price of, any product which fails to conform with this warranty under normal use and service. This warranty does not apply to damage from alterations, abuse, misuse, lack of maintenance, or normal wear and tear of the product. Proof of purchase from an Authorized Klein Tools Distributor is required for all warranty claims. **In no event shall Klein be liable for incidental or consequential damage.**

### THE NORMAL LIFE OF THE PRODUCT

#### Specialty Hand Tools

(including but not limited to Insulated Tools, Steel And Concrete Construction Tools, Mining and Heavy Industry Tools, Two-Handed Bolt Cutters and Cable Cutters, Torque Tools, Snips, Trimmers, Shears, Telecom Tools, Box Wrenches, Specialty Wrenches, Rebar Hickeys, Cable Benders)

#### Occupational Protective Equipment

(including but not limited to Climbing Belts, Linemen's Body Belts, Climbers, Climber Pads, Gaffs, Harnesses, Positioning Straps, Lanyards)

#### Lineman Buckets, Block and Tackle, Lineman Backpacks, Aerial Aprons, Tie Wire Reels

#### Wire Pulling Grips

### TWO YEARS FROM THE DATE OF PURCHASE

#### High Voltage Electrical Test and Measurement

(including but not limited to HVNCVT-1, HVNCVT-2, HVCT-1)

This warranty does not apply to batteries.

### ONE YEAR FROM THE DATE OF PURCHASE

#### Ratcheting Hand Tools

(including but not limited to Ratcheting Cable Cutters, Ratcheting Bolt Cutters)

Repair service is available for most out of warranty ratcheting hand tools.

#### Personal Protective Equipment and Safety Products

(including but not limited to Safety Glasses, Hard Caps, Hard Hats, Accessories)

#### Cordless Power Tool Accessories

(including but not limited to batteries, chargers)

### PRODUCTS WARRANTED TO BE FREE FROM DEFECTS IN MATERIALS AND WORKMANSHIP WHEN DELIVERED TO THE CUSTOMER

#### Specialty Consumables

(including but not limited to Ship Augers, Knockout Punches, Grip Insert Files, Drift Pins, Bull Pins, Punches, Cold Chisels, Wedges)

### BATTERY OPERATED TOOLS: HEAVY DUTY HYDRAULIC CRIMPERS, GEAR DRIVEN CABLE CUTTERS, AND IMPACT WRENCH

#### Five years from the date of purchase — Hydraulics

#### Three years from date of purchase — Motor, Housing, and Electronics

#### One year from date of purchase — Moving Parts (including: interchangeable heads and jaws; excluding: specialty consumables)

DeWALT battery packs and chargers are covered by DeWALT's warranty policy. Visit [www.dewalt.com](http://www.dewalt.com) or call 1-800-4-DeWALT (1-800-433-9258) for more details.

## WARRANTY RETURNS

All warranty returns must include a Warranty Return Authorization (WRA) number. To obtain the WRA and service under this warranty please visit [www.kleintools.com/warranty](http://www.kleintools.com/warranty) or contact your Authorized Klein Tools Distributor.

## Warning Symbols

The following warning symbols are utilized on Klein Tools products and throughout this book to inform of the level and nature of the hazard associated with our products. As a general warning, you should always inspect your tools before each use. Keep tool clean, dry and free of surface contaminants.

|  |  |  |  |
|--|--|--|--|
|  | Warning Symbol                                 |  | Strong Magnetic Field                        |
|  | Wear Eye Protection                            |  | Risk Of Shock                                |
|  | Do Not Use On Or Near Live Electrical Circuits |  | For Use on Bare Live Conductor (Clamp Meter) |
|  | Read Instructions Before Use                   |  | Laser Warning                                |
|  | Do Not Use to Pry                              |  | Not Personal Protective Equipment            |
|  | Do Not Use To Chisel                           |  | Do Not Probe Moving Parts                    |
|  | Do Not Extend Handle Length                    |  | Do Not Strike Hammer Faces Together          |
|  | Do Not Push Or Hammer                          |  | Double Insulated                             |
|  | Use Safe Work Position                         |  | 1000V Rated                                  |

**⚠ WARNING:** Cancer and reproductive harm – See [www.P65Warnings.ca.gov](http://www.P65Warnings.ca.gov) for more information.



## PROPER USE GUIDE



Prepared by KLEIN TOOLS  
in conjunction with the  
Hand Tools Institute.  
Available from your  
Klein distributor  
(Cat. No. 98016).



**Specifications of all products in this catalog are subject to change without notice.**

Dimensions shown for all forged products in this catalog are as precisely accurate as possible, but subject to very slight variations that are unavoidable in forging and grinding operations. Dimensions of Klein forged tools and all other tools and equipment are always within commercial tolerances recognized for such products.



# HAND TOOLS

Klein specializes in the making of the world's finest tools...tools that professionals have trusted for more than 160 years.

Klein pliers, strippers, cutters, crimpers and other hand tools are designed to get jobs done with precision and quality. They are job-matched for every kind of work you do; designed and built with exceptional quality standards in a tradition that dates back to 1857.

- Ironworkers Pliers
- Wire Stripping/Cutting
- Cable Cutting/Stripping
- Knives
- Screwdrivers/Nut Drivers
- Impact Sockets
- Ratcheting Wrenches
- Hammers
- Fish Tapes
- Levels



# IRONWORKER'S PLIERS

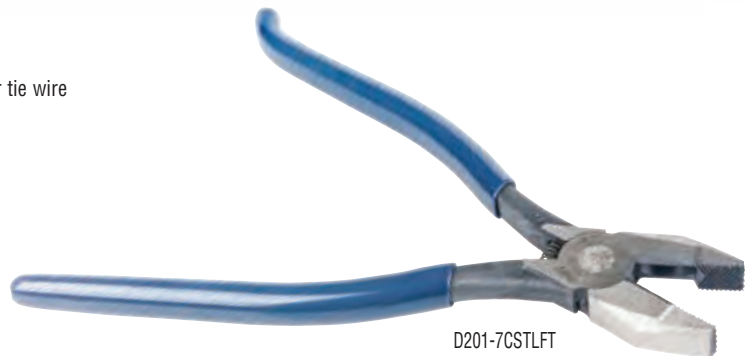
**FORGED STEEL**

from Klein's US-made, proprietary blend



## Left Handed Ironworker's Pliers

- Designed specifically for lefties to twist and cut soft annealed rebar tie wire
- Hook bend in left handle for added grip and leverage
- Heavy-duty knurled jaws
- Spring-loaded action for self-opening



D201-7CSTLFT

| Cat. No.     | Overall Length  | Jaw Length      | Jaw Width       | Jaw Thickness | Knife Length    | Handle Color | Handle Finish |
|--------------|-----------------|-----------------|-----------------|---------------|-----------------|--------------|---------------|
| D201-7CSTLFT | 9.19" (23.3 cm) | 1.281" (3.3 cm) | 1.156" (2.9 cm) | 0.5" (1.3 cm) | 0.625" (1.6 cm) | Blue         | Plastic       |

See page 19 for Insulated Models   1000 V



# WIRE STRIPPERS

Twist up to  
3 Wires

**KLEIN-KURVE®**



**FORGED STEEL**  
from Klein's US-made  
proprietary blend

## Klein-Kurve® Heavy-Duty Wire Strippers

- Strip 8-18 AWG solid and 10-20 AWG stranded wire
- Large knurled jaws for twisting, grabbing and looping wire; twists up to 3 wires at a time
- Shear cutting knives (K12035) for easier cutting of copper wire and larger material such as Romex® cable (all sizes) and other nonmetallic (type NM) sheathed cable
- Screw shearing for 6-32 and 8-32 screws
- K12065CR crimps non-insulated connectors, lugs and terminals for 10-20 AWG stranded wire
- High leverage design for improved performance



Crimps non-insulated connectors, lugs and terminals



K12035



K12065CR

| Cat. No. | Strips and Cuts                    | Screw Shearing | Crimping Capacity  | Overall Length  | Handle Color |
|----------|------------------------------------|----------------|--------------------|-----------------|--------------|
| K12035   | 8-18 AWG Solid; 10-20 AWG Stranded | 6-32 and 8-32  | —                  | 8.41" (21.4 cm) | Blue/Gray    |
| K12065CR |                                    |                | 10-20 AWG Stranded | 8.3" (21.1 cm)  | Blue/White   |

\*Romex® is a registered trademark of Southwire Company

## Klein-Kurve® Wire Stripper / Cutter

- Six stripping holes for 8-18 AWG solid and 10-20 AWG stranded wire
- Updated lock that tucks nicely out of the way
- Narrow head geometry gets into hard to reach places
- Precision, shear-like blades for clean cuts and dual wire looping holes
- Coil spring for fast self-opening action



K11095

| Cat. No. | Strips and Cuts                    | Screw Shearing | Overall Length | Handle Color |
|----------|------------------------------------|----------------|----------------|--------------|
| K11095   | 8-18 AWG Solid; 10-20 AWG Stranded | 6-32 and 8-32  | 7.15" (18 cm)  | Blue/White   |



# HIGH-LEVERAGE CABLE CUTTERS



J63225N has an integrated stripping hole for 1/0 and 2/0 cable

**FORGED STEEL**  
from Klein's US-made proprietary blend



## High-Leverage Cable Cutters

- Cut aluminum, copper and communications cable
- Cable-gripping shear-type jaws require 30% less force needed to cut as compared to Klein's 63050 model
- The compact, yet powerful, 63215 cutter cuts and removes aluminum metal clad (MC) cable jacket
- Forged, custom, US-made tool steel for maximum durability
- Hot-riveted joint ensures smooth action and no handle wobble



| Cat. No. | Cutting Capacity  | Strips            | Overall Length | Handle Color | Handle Finish  |
|----------|---|-------------------|----------------|--------------|----------------|
| 63225    | 4/0 Aluminum, 2/0 Soft Copper, 100-Pair 24 AWG Communications Cable | —                 | 9.07" (23 cm)  | Red          | Plastic-Dipped |
| J63225N  |   | 1/0 and 2/0 cable | 9.3" (24 cm)   | Red/Black    | Journeyman™    |
| 63215    | Up to 1/0 AWG Aluminum and Copper                                   | —                 | 6.6" (16.7 cm) | Red          | Plastic-Dipped |

## Electrician's Bearing-Assisted Open Pocket Knife

- Easy one-handed, bearing-assisted opening
- Drop Point blade
- Strips 14-10 AWG solid, 16-12 AWG stranded wire when the blade is closed
- Hole at the base of the blade for looping wire
- Rugged aluminum handle and a frame lock to secure the blade open
- Ambidextrous flip lever for easy one finger opening



| Cat. No. | Description                        | Blade Type | Blade Length   | Blade Material  | Handle Material | Length Closed   | Overall Length  |
|----------|------------------------------------|------------|----------------|-----------------|-----------------|-----------------|-----------------|
| 44228    | Bearing-Assisted Open Pocket Knife | Drop Point | 2.95" (6.4 cm) | Stainless Steel | Aluminum        | 4.23" (10.7 cm) | 7.18" (18.2 cm) |

**WARNING:** Blades are intended for cutting only, and should be handled and disposed of with care. Bending the blade can cause it to break, possibly resulting in bodily injury. Check local law on legality of selling, possessing, or carrying these knives. Check local law on legality of selling, possessing, or carrying this knife.



# SCREWDRIVERS NUT DRIVERS



## 11-in-1 Magnetic Screwdriver / Nut Driver

- Strong, rare earth magnets securely hold bits and fasteners
- Blast-finished bit tips provide a firm hold and reduce cam-out
- Interchangeable shaft for quick and easy switch out
- Cushion-Grip handle for greater torque and comfort
- The following replacement bits are available: see Cat. No. 32482 (#1 Phillips and 3/16" Slotted), Cat. No. 32483 (#2 Phillips and 1/4" Slotted), Cat. No. 32484 (#1 Square and #2 Square), and Cat. No. 32485 (T10 TORX® and T15 TORX®)



32500MAG



| Cat. No. | Nut Driver Sizes  | Phillips Bits | Slotted Bits                  | Square Bits | TORX® Bits | Shank Length | Handle Color | Overall Length |
|----------|-------------------|---------------|-------------------------------|-------------|------------|--------------|--------------|----------------|
| 32500MAG | 3/8", 5/16", 1/4" | #1, #2        | 1/4" (0.6 cm), 3/16" (0.5 cm) | #1, #2      | T10, T15   | 3" (7.6 cm)  | Yellow/Black | 7.8" (19.8 cm) |

TORX® is a registered trademark of Acument Intellectual Properties, LLC.

See page 19 for Insulated Models   1000 V



## Multi-Bit Adjustable Length Screwdrivers

- Adjust the length of the blade for easier access
- Impact rated blade can be removed for use as an impact driver attachment
- Industrial-strength bits are conveniently housed in the handle
- Stainless steel bit holder contains powerful rare earth magnets for securing bits and fasteners
- Cushion-grip handle for maximum comfort and spin cap for optimum and precise control



| Cat. No. | Description   | Nut Driver Sizes | Phillips Bits  | Slotted Bits                  | Square Bits | Combo Bits | TORX® Bits         | Shank Length                  | Handle Color | Overall Length  |
|----------|---|------------------|----------------|-------------------------------|-------------|------------|--------------------|-------------------------------|--------------|-----------------|
| 32303    | 14-in-1 Multi-Bit Adjustable Length Screwdriver       | 1/4" (0.6 cm)    | #0, #1, #2, #3 | 3/16" (0.5 cm), 1/4" (0.6 cm) | #1, #2      | #2         | T10, T15, T20, T25 | 1.0" to 4.0" (2.5 to 10.1 cm) | Black/Yellow | 9.73" (24.7 cm) |
| 32308    | 8-in-1 Multi-Bit Adjustable Length Stubby Screwdriver | 1/4" (0.6 cm)    | #1, #2, #3     | 3/16" (0.5 cm), 1/4" (0.6 cm) | #1, #2      | —          | —                  | 1" to 2.75" (2.5 to 7 cm)     | Black/Yellow | 4.81" (12.2 cm) |

TORX® is a registered trademark of Acument Intellectual Properties, LLC.

## Multi-Bit Ratcheting Screwdriver and Multi-Bit Tamperproof Screwdriver

- On-board storage of industrial-strength bits
- Spin Caps for optimum and precise control
- Cushion-Grip handle for great torque and maximum comfort
- Collar sets ratchet direction at forward, fixed and reverse (Cat. No. 32305)



| Cat. No. | Description                               | Nut Driver Sizes | Phillips Bits  | Slotted Bits                  | Square Bits | Hex Bits  | Combo Bits | TORX® Bits   | Other Bits  | Shank Length   | Handle Color | Overall Length  |
|----------|---|------------------|----------------|-------------------------------|-------------|---|------------|--|---|----------------|--------------|-----------------|
| 32305    | 15-in-1 Multi-Bit Ratcheting Screwdriver  | 1/4" (0.6 cm)    | #0, #1, #2, #3 | 3/16" (0.5 cm), 1/4" (0.6 cm) | #1, #2      | —   | #1, #2     | T10, T15, T20, T25                                     | —   | 3.5" (8.9 cm)  | Black/Yellow | 8.71" (22.1 cm) |
| 32307    | 27-in-1 Multi-Bit Tamperproof Screwdriver | 1/4" (0.6 cm)    | —              | —                             | —           | Tamperproof: 3/32", 7/64", 1/8", 9/64", 5/32" (4 mm), 3/16", 2 mm, 2.5 mm, 5 mm, 3 mm | —          | Tamperproof: T7, T8, T10, T15, T20, T25, T27, T30, T40 | TORQ-SET®: TS6, TS8, TS10; Tamperproof Spanner: SP4, SP6, SP8, SP10 | 3.38" (8.6 cm) | Black/Yellow | 8.49" (21.6 cm) |

\*TORQ-SET® is a registered trademark of Phillips Screw Co; TORX® is a registered trademark of Acument Intellectual Properties, LLC

## Slim-Profile Mini Ratchet Set

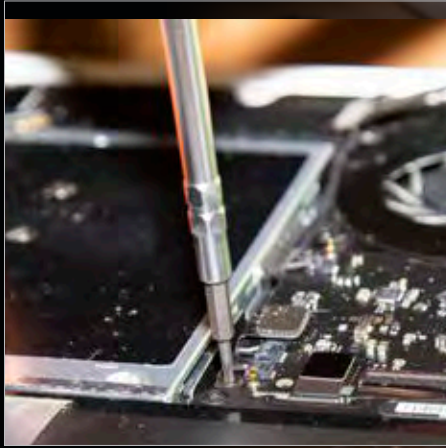
- Includes 1/4" and 5/16" nut drivers, a 1/4" adapter and four drive bits: #1 and #2 Phillips; 3/16" and 1/4" slotted
- Slim-profile 1/4" dual-drive head and socket adapter for more versatility
- The 72-tooth ratchet only needs a 5° sweep for tight areas
- High-strength, steel construction increases torque and tool life
- Ring magnet and bit clip for better bit retention



| Cat. No. | Drive Size      | Screw Shearing | Overall Length |
|----------|-----------------|----------------|----------------|
| 65200    | 1/4" Dual-Drive | 4.33" (11 cm)  | 2.5 oz (71 g)  |



# PRECISION SCREWDRIVERS



## All-in-1 Precision Screwdriver Set with Case

- Precision screwdriver set includes 39 bits for various applications including repair of most Apple® products
- Spin cap offers optimum and precise control
- Industrial-strength heat treated bits in a compact case with a stay-shut latch
- Powerful magnets inside barrel to better retain bits, as well as pick up and hold fasteners
- Reversible barrel has standard and extended reach ends



32717

| Cat. No. | Phillips Bits         | Slotted Bits                             | Square Bits | Hex Bits  | TORX® Bits  | Other Bits   | Shank Length                                  | Handle Color | Overall Length  |
|----------|-----------------------|--|-------------|---|---|--|---|--------------|-----------------|
| 32717    | #000, #00, #0, #1, #2 | 1 mm, 1.5 mm, 2 mm, 2.5 mm, 3 mm, 3.5 mm | #1, #2      | 0.9 mm, 1.3 mm, 1.5 mm, Tamperproof: 2 mm, 2.5 mm, 3 mm, 3.5 mm | T3, T4, Tamperproof: T5, T6, T7, T8, T9, T10, T15 | Triangle: #2, #3; Pentalope: P2, P5; Tri-Wing®: Y000, Y0, Y1; Stand Off; Spanner: #4, #6 | Standard: 2" (5.1 cm); Extended: 4" (10.2 cm) | Yellow/Black | 6.35" (16.1 cm) |

\*Apple® is registered trademarks of Apple Inc; TORX® is a registered trademark of Acument Intellectual Properties, LLC; Tri-Wing® is a registered trademark of Phillips Screw Company

## 14-in-1 Precision Screwdriver/ Nut Driver

- Precision screwdriver and integrated nut drivers include 14 of the most common sizes in one tool
- Spin cap offers optimum and precise control
- Cushion-Grip handle for maximum comfort
- Industrial-strength heat treated bits
- Sizes are etched into integrated barrels and bits
- Interchangeable steel shaft for fast, easy bit changes



32314

| Cat. No. | Nut Driver Sizes                        | Phillips Bits | Slotted Bits                  | TORX® Bits                       | Shank Length  | Handle Color | Overall Length |
|----------|---|---------------|-------------------------------|----------------------------------|---------------|--------------|----------------|
| 32314    | 9/64", 5/32", 3/16", 7/32", 1/4", 5/16" | #00, #0       | 3/32" (0.2 cm), 1/8" (0.3 cm) | Tamperproof TT7, TT8, TT10, TT15 | 3.1" (7.9 cm) | Black/Yellow | 7" (17.8 cm)   |

TORX® is a registered trademark of Acument Intellectual Properties, LLC.



# IMPACT SOCKETS

## 2-in-1 Impact Socket Sets, 5-Piece

- Each Imperial and Metric set features 8 different sizes in 4 easy-to-carry sockets
- Consist of the most commonly used impact socket sizes in electrical and construction work
- Single-ended impact sockets with hands free adjustment between sizes
- Deep socket with 1/2" drive works great for hardware installation and removal
- Engineered for use with impact drivers
- Includes 1/4" hex by 1/2" hex square adapter
- Case for storage
- Replacement sockets available (sold separately)



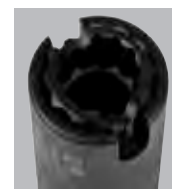
| Cat. No.                        | Socket Sizes  | Points | Includes  |
|---------------------------------|---|--------|---|
| 66040                           | 7/8 x 11/16", 3/4 x 9/16"<br>5/8 x 7/16" and 1/2 x 3/8" | 12     | 1/4" Hex by 1/2" Hex Square Adapter<br>Case for Storage |
| 66050E                          | 32 x 27 mm, 30 x 22 mm,<br>24 x 19 mm, and 17 x 13 mm   |        |   |
| Replacement Sockets and Adapter |   |        |   |
| 66041                           | Adapter   | —      |   |
| 66011                           | 1/2 x 3/8"  | 12     |   |
| 66012                           | 5/8 x 7/16"   |        |   |
| 66001                           | 5/8 and 7/16"   |        |   |
| 66014                           | 7/8 and 11/16"  |        |   |
| 66051E                          | 17 x 13 mm  |        |   |
| 66052E                          | 24 x 19 mm  |        |   |
| 66053E                          | 30 x 22 mm  |        |   |
| 66054E                          | 32 x 27 mm  |        |   |



## 2-in-1 Slotted Impact Socket

- Slot in the outer socket to tighten and loosen hot line clamp eye-bolts
- Alignment slot in inner socket
- Patent pending design
- Cross hole design to prevent unintentional separation of adapter and socket

| Cat. No. | Socket Size  | Points |
|----------|--------------|--------|
| 66031    | 3/4" x 9/16" | 12     |



# LINEMAN'S RATCHETING WRENCHES & HAMMER

## Lineman's Ratcheting Wrenches

- Great for utility work, and work on most common utility pole hardware, as lag bolts, "C" clamps and suspension bolts
- Bolt-through design allows bolts to pass through the socket (Cat. Nos. KT151T, K152T)
- Fully integrated handle for durability and non-slip grip for comfort
- Tether hole to keep it connected when working at height (Cat. Nos. K151T, K152T)
- Smaller gear teeth for optimal use (shorter throws) in tighter spaces (Cat. No. KT155HD)
- Bright yellow socket for easy visibility



| Cat. No. | Description                                    | Size  | Points | Overall Length      |
|----------|--|---|--------|---------------------|
| KT151T   | 4-in-1 Lineman's Ratcheting Wrench             | 3/4", 13/16", 1" and 1-1/8"                         | 8      | 13"<br>(33 cm)      |
| KT152T   | 4-in-1 Lineman's Slim Ratcheting Wrench        | 3/4", 13/16", 1" and 1-1/8"                         | 8      | 13.25"<br>(33.7 cm) |
| KT155HD  | 6-in-1 Lineman's Ratcheting Wrench, Heavy-Duty | 3/4", 13/16", 1", 1-1/8" Square; 9/16" and 3/4" Hex | 8      | 12"<br>(30.5 cm)    |
| KT155T   | 6-in-1 Lineman's Ratcheting Wrench             | 3/4", 13/16", 1", 1-1/8" Square; 9/16" and 3/4" Hex | 8      | 9.375"<br>(23.8 cm) |

## Lineman's Claw Milled Hammer

- Large head for driving in staples and lag bolts
- Milled face aids in driving staples into utility poles
- Claw end for removing nails, molding, and ground wire
- Lanyard hole for tethering
- Fiberglass handle with textured grip to prevent slippage



| Cat. No. | Head Weight   | Overall Length |
|----------|---------------|----------------|
| 832-26   | 26 oz (737 g) | 5.4' (13.7 cm) |





# FISH TAPES

**Multi-grip handle** gives you a firm, steady grip as you pull tape from the case

**Slip-resistant housing** geometry improves winding power and reduces binding

**Polypropylene case and handle** offer impact resistance

**Laser etched markings in 1' (0.3 m) increments** allow you to more accurately measure the depth of conduit runs and determine the amount of tape left to pay out

**Designed to decrease payout effort** by optimizing the tape payout angle

**Unique, low friction case** reduces binding



Available in steel, fiberglass, and stainless steel with a wide variety of tips

## Wide Steel Fish Tape, 25'

- Durable, high carbon 1/4" wide spring steel fish tapes are firm yet flexible
- New protective coating reduces non-contact moisture and humidity but keeps the steel dry to touch
- Laser etched markings in 1' (0.3 m) descending increments allow you to more accurately measure the length of conduit runs and determine the amount of tape left to pay out
- Slim-profile plastic tip navigates easily and reduces catching
- Optimized design of the tape housing decreases payout effort; case and handle offer the maximum impact resistance
- U.S. Patents: 8164025; 8168921; 8212178; 9895773; 10099316

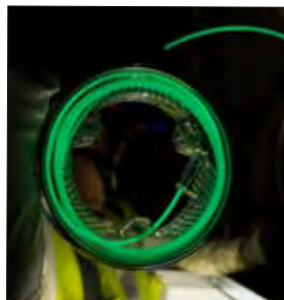


56335

| Cat. No. | Description                      | Tape Size                                       | Diameter     |
|----------|----------------------------------|---|--------------|
| 56335    | Wide Steel Fish Tape, 1/4" x 25' | 25.0' x 0.25" x 0.03" (7.6 m x 0.6 mm x 0.8 mm) | 7" (17.8 cm) |

## Glow Fish Tape, 20'

- Unique glow-in-the-dark fiberglass tape and nylon tip
- Fully removable from case for more versatile application such as pass-through wire feeding; alignment mark on case makes for easy re-installation into housing
- Anchoring end utilizes stainless steel connector that is compatible with Klein Fish Rod attachments (see Cat. No. 56511)
- Narrow, eyelet tip for easy feeding through crowded spaces
- Made in the USA



50550

| Cat. No. | Description        | Tape Size                     | Diameter     |
|----------|--------------------|-------------------------------|--------------|
| 50550    | 20' Glow Fish Tape | 20' x 0.153" (6.1 m x 3.9 mm) | 7" (17.8 cm) |



# CROSS-LINE & BUBBLE LASER LEVELS

Self-leveling, easy-to-read  
**Horizontal & Vertical**  
laser lines

**Projects horizontal and vertical lines** independently or together for various alignments

**Integrated magnetic 360° mounting bracket** with 1/4" and 5/8" tripod mounting threads

**Plumb spot lasers** to pinpoint floor and overhead locations



## Self-Leveling Green Cross-Line Laser Level with Red Plumb Spot

- High-performance laser leveling and alignment tool for professionals that provides a reliable self-leveling pendulum
- Green horizontal and vertical laser lines and red plumb spot lasers that project horizontal and vertical lines independently or together to address various alignment tasks
- Integrated magnetic 360° mounting bracket with 1/4" and 5/8" tripod mounting threads
- Low battery indicator and easily accessible battery compartment
- Water and dust resistant (IP54)
- Hard plastic carrying case included



93LCLG



| Cat. No. | Laser Color                     | Accuracy   | Overall Length | Overall Height | Overall Width |
|----------|---------------------------------|--|----------------|----------------|---------------|
| 93LCLG   | Cross-Line: Green<br>Plumb: Red | ±3/32" per 33' (±2 mm per 10 m) Vertical and Horizontal Beams,<br>±1/8" per 33' (±3 mm per 10 m) Plum Spot | 5.3" (13.5 cm) | 5.0" (12.7 cm) | 2.6" (66 cm)  |

## Laser Line Bubble Level

- Projects a horizontal laser line and spot parallel to the base of the level up to 75' (22.9 m) and has three easy-to-read bubble vials - horizontal and cross vials at 0° level, and vertical vial at 90°
- Strong rare earth magnetic base attaches to ferromagnetic surfaces
- Large top-view vial windows for improved visibility
- High-visibility orange cast aluminum body is easy to see on conduit and at jobsites
- V-groove fits contour of pipe and conduit
- Removable leveling stand has thumb screws for manual leveling on uneven surfaces



LBL100

| Cat. No. | Accuracy  | Overall Length | Overall Height | Overall Width  |
|----------|---|----------------|----------------|----------------|
| LBL100   | Vials: 0.043"; Spot: +/-0.02" (+/-0.5 mm) at 39.4" (1 m) from Level | 7.3" (18.5 cm) | 1.84" (4.7 cm) | 0.85" (2.2 cm) |





# JOBSITE

Our insulated tools combine excellent functionality and reduction of risk of injury where a tool might make contact with an energized source with voltage up to 1000 volt.

Klein's Personal Protective Equipment and Safety products help guard against a variety of occupational hazards.

- 1000V Insulated Tools
- Safety Helmets/Hard Hats
- Eyewear
- Work Wear
- Weather Protection
- Respiration
- Gloves
- Illumination/Flashlights
- Jobsite Accessories
- Tool Storage



# 1000 V INSULATED TOOLS



## Electrician's Insulated Tools (EINS)

Provides a multi-color, sleeker design than the Classic Lineman's insulated tools. EINS tools have passed VDE third party testing certification to the IEC 60900 standard.

**Durable, molded insulation** provides protection against electric shock

**Thick, exceptionally tough, high-dielectric coating** is bonded to the tool

**Flame retardant, impact-resistant, bright orange coating**

## Insulated Screwdrivers (INS)

Feature insulated, bright orange shaft with Cushion-Grip handles for safety and comfort.

All Klein insulated tools comply with ASTM F-1505 and IEC 60900 standards for insulated tools and are clearly marked with the official international 1000-volt rating symbol.

To conform to these standards, each insulated tool is put through Klein's internal rigorous testing process to ensure the tool can handle any situation in the field. Some of these tests include the dielectric test, a handle pull off test, an impact test and a flammability test, to confirm the durability and reliability of our insulated tools.

Not all tools with plastic coatings or plastic handles provide protection against electrical shock. Only use those tools that are marked with the official international 1000-volt rating symbol, as shown, if there is any chance that the tool will make contact with an energized source.



### DIELECTRIC TESTING

10,000 volts are run through the insulation to ensure that there are no leaks



### FLAMMABILITY TESTING

**⚠ WARNING:** Only use tools that are marked with the official international 1000-volt rating symbol shown below, if there is any chance that the tools will make contact with an energized source.



**⚠ WARNING:** Wear approved eye protection. Always inspect your tools before use. Do not use if orange coating cracks, breaks or becomes damaged. Destroy tool if white layer shows through orange layer.

**⚠ WARNING:** Do NOT touch uninsulated portion of the tool or any conductive object when either might contact an energized source.

**⚠ WARNING:** Whenever possible, always de-energize lines and equipment prior to working on or around them. Klein insulated tools are designed only to reduce the chance of injury where the tool may make contact with an energized source.

**⚠ WARNING:** Because moisture, films, or other surface contaminants are conductive, Klein insulated tools must be kept clean, dry, and free of any surface contaminants.

## 5-Piece Insulated Tool Kit

- 5-Piece kit includes the must-have insulated tools for any professional tradespersons
- All tools meet or exceed ASTM F1505 and IEC 60900 standards for insulated tools
- Three-part insulation with underlayer on the pliers and wire stripper provides warning sign that insulation may be compromised. VDE Certified



94130

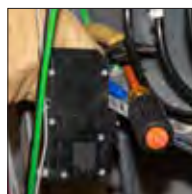
| Cat. No.        | Description  |
|-----------------|--|
| 94130           | 1000V Insulated Tool Kit, 5-Piece                            |
| <b>Includes</b> |  |
| 11054EINS       | Insulated Wire Stripper/Cutter                               |
| 200028EINS      | 8" Insulated Diagonal Cutters                                |
| 2139NEEINS      | 9" Insulated Side-Cutters, Slim Handle                       |
| 6924INS         | Slim-Tip Insulated 1/4" Cabinet, Screwdriver, 4" Round Shank |
| 6934INS         | Slim-Tip Insulated #2 Phillips Screwdriver, 4" Round Shank   |

## Insulated Slim-Tip Screwdrivers

- Clearly marked with the official 1000-Volt rating symbol
- Slim tip that allows for greater access into tight spaces
- Layer of orange impact and flame-resistant insulation protects from energized sources
- Meets or exceeds ASTM F-1505-16 and IEC 60900:2018 for insulated tools
- Tip-Ident quickly identifies the tip type and orientation
- Made in the USA



| Cat. No. | Description                           | Tip Type | Shank Type | Shank Length | Overall Length   | Insulated Slim-Tip Screwdrivers Sets |          |
|----------|---------------------------------------|----------|------------|--------------|------------------|--------------------------------------|----------|
|          |                                       |          |            |              |                  | 33732INS                             | 33732INS |
| 6916INS  | Slim-Tip Insulated Screwdriver, 3/16" | Cabinet  | Round      | 6" (15.2 cm) | 10.31" (26.2 cm) |                                      | •        |
| 6924INS  | Slim-Tip Insulated Screwdriver, 1/4"  | Cabinet  | Round      | 4" (10.2 cm) | 8.31" (21.1 cm)  | •                                    | •        |
| 6934INS  | Slim-Tip Insulated Screwdriver, #2    | Phillips | Round      | 4" (10.2 cm) | 8.31" (21.1 cm)  | •                                    | •        |
| 6946INS  | Slim-Tip Insulated Screwdriver, #2    | Square   | Round      | 6" (15.2 cm) | 10.31" (26.2 cm) |                                      | •        |



# SAFETY HELMETS



## SIX-POINT SUSPENSION

for enhanced stability and secure fit

## OPEN-FRAME DESIGN

for maximum air circulation

## REAR NECK PAD

made of soft material to conform and grip to maintain ratchet location

## VISOR MOUNTING POINT

## UNIVERSAL ACCESSORY SLOTS

## LARGER VENTS = BETTER VENTILATION

The adjustable vents can be opened or closed for maximum air circulation.



## PATENT-PENDING ACCESSORY MOUNTS



60145



60147



60149

Engineered for optimal safety, comfort and fit. Compact helmet design and unique features allow the user to comfortably work in confined spaces and a variety of demanding environments.

- Patent-pending accessory mounts on front and back ensure Klein Headlamps (not included) attach securely and precisely — no straps or zip ties needed!
- 6-point suspension along with chin strap provides improved stability and secure fit when tilting your head
- Breathable padded sweat-wicking sweatband and comfort top pad are machine washable
- Easy, one-handed adjustment with large knob ratchet mechanism, even with gloves on; soft neck pad pivots to clear bandanna knots and pony tails
- Detachable 4-point padded chin strap for comfortable secure fit
- Fits hat sizes 6.5 to 8
- Shell: PC/ABS; Suspension: PC/ABS and HDPE



| SAFETY HELMETS |                                    |                  |             |
|----------------|------------------------------------|------------------|-------------|
| Cat. No.       | Description                        | Venting          | Shell Color |
| 60145          | Safety Helmet, Non-Vented- Class E | —                | White       |
| 60147          | Safety Helmet, Non-Vented-Class E  | —                | Blue        |
| 60149          | Safety Helmet, Vented-Class C      | Adjustable Vents | White       |

## PROTECTION FROM IMPACT, PENETRATION, AND LATERAL DEFORMATION



(Shown: Cat. No. 60148: TYPE I, CLASS E)

## Klein Safety Helmets are tested to the latest standards

**TYPE I, CLASS E**  
ELECTRICAL PROTECTION UP TO 20KV

**TYPE I, CLASS C**  
ADJUSTABLE SIDE VENTS HELP MANAGE AIR CIRCULATION

- 1 ANSI/ISEA Z89.1-2014 CSA Z94.1-15
- 2 EN12492:2012\*: 4.2.1.2, 4.2.1.3, 4.2.1.4, 4.2.2, 4.2.3, 4.2.4
- 3 EN397:2012+A1:2012: 5.2.1, 5.2.4, 5.2.5

\*This helmet provides LIMITED protection from small objects striking the top, front, back, left and right sides of the helmet. This is NOT an ANSI/CSA Type II helmet.



# BUILDING ON A TRADITION OF SAFETY, COMFORT & FIT



| SAFETY HELMETS WITH RECHARGEABLE HEADLAMPS #56062 |  |                  |             |                                     |
|---|--|------------------|-------------|-------------------------------------|
| Cat. No.  | Description  | Venting          | Shell Color | Lumens                              |
| 60146   | Safety Helmet, Non-Vented-Class E, with Rechargeable Headlamp (#56062) | —                | White       | Boost: 300<br>High: 215<br>Low: 100 |
| 60148   | Safety Helmet, Non-Vented-Class E, with Rechargeable Headlamp (#56062) | —                | Blue        | Boost: 300<br>High: 215<br>Low: 100 |
| 60150   | Safety Helmet, Vented-Class C, with Rechargeable Headlamp (#56062)     | Adjustable Vents | White       | Boost: 300<br>High: 215<br>Low: 100 |



## Safety Helmet Visors

Designed with lightweight materials and vents for adequate ventilation offer long term comfort, specifically to fit Klein Tools Safety Helmets only (Cat. Nos. 60145, 60146, 60147, 60148, 60149, 60150).

- Superior Impact Protection: Tested to the latest ANSI Z87.1+ (2020), CSA Z94.3-20 and MIL-PRF-32432A (Class 1-ballistics fragmentation) standards (See instructions for details)
- High Quality Visor: Optical Class-1
- Anti-fog
- Scratch Resistant
- UV Protection: effectively blocks 99.9% harmful UV-A, UV-B, and UV-C rays
- Locks in up and down position to maintain desired position when moving head



MIL-PRF  
32432A  
Clause 3.8.4.1  
Class 1

CSA  
Z94.3

ANSI  
Z87.1+



VISORCLR



VISORGRAY

## VISORS FOR SAFETY HELMETS

| Cat. No.  | Description                      | Window Dimensions           | Lens Color | Material                                   |
|-----------|----------------------------------|-----------------------------|------------|--|
| VISORCLR  | Safety Helmet Visor, Clear       | 7" (17.8 cm) x 4" (10.1 cm) | Clear      | Shell: PC/ABS; Suspension: PC/ABS and HDPE |
| VISORGRAY | Safety Helmet Visor, Gray Tinted | 7" (17.8 cm) x 4" (10.1 cm) | Gray Tint  | Shell: PC/ABS; Suspension: PC/ABS and HDPE |

## Safety Helmet Accessories

For exclusive use with Klein Tools' Safety Helmets (Cat. Nos. 60145, 60146, 60147, 60148, 60149, and 60150)

- Chin Strap (Cat. No. CLMBRSTRP) helps keep safety helmets in place during high winds, at height, or in confined work positions with multi-point attachments; detachable and replaceable
- 6-point suspension (Cat. No. CLMBRSPN) features flexible open frame design and ratchet-knob adjustment for a secure fit
- Replaceable Sweatband and Top Pad are machine washable

### REPLACEABLE ACCESSORIES

| Cat. No.  | Description              | Special Features                       |
|-----------|--------------------------|--|
| CLMBRSPN  | Safety Helmet Suspension | 6-Point Attachment, Ratchet Adjustment |
| CLMBRSTRP | Safety Helmet Chin Strap | Detachable and Adjustable              |
| KHHTOPPAD | Top Comfort Pad          | Sold as 3-Pack                         |
| KHHSWTBND | Suspension Sweatband     | Sold as 3-Pack                         |



CLMBRSPN\*

\*Shown with top pad and sweatband, all sold separately.



CLMBRSTRP



KHHSWTBND



KHHTOPPAD



# HARD HATS

Klein Tools Hard Hats are designed and engineered for optimal safety, comfort and fit. Unique features allow the user to comfortably work in a wide variety of applications and demanding environments. Patent-pending accessory mounts on front and back ensure optional Klein Headlamps attach securely – no straps needed!

- Breathable, padded sweat-wicking sweatband and top pad improve comfort and are machine washable
- Unique suspension system features a flexible open frame design to provide optimal fit and improved air circulation
- Easy, one-handed adjustment with large knob ratchet mechanism, even with gloves on, and soft neck pad pivots to clear bandanna knots and pony tails
- Reverse donning: suspension can be switched to wear hard hat backwards
- Sweatband, Top Pad, Chin Strap and Suspension System also sold separately
- All hard hats made of durable PC/ABS

## LONG TERM COMFORT AND OPTIMAL FIT

**Flexible, Open-Frame Design**  
allows suspension to conform to user's head, provides optimal fit, and improved ventilation.

**Rear Neck Pad**  
Soft, non-slip rear pad provides excellent cushion and grip.

**Replaceable, Sweatband**  
Front and side coverage; sweat-wicking and breathable padding; machine washable. (Replacement part # KHHSWTBND)

**Chin Strap Attachment Points**  
Chin Strap is sold separately. (#KHHSTRP)

**Multi-Point Adjustment**  
allows user to choose the best position for enhanced fit and comfort.



## REVERSE DONNING

Suspension can be easily adjusted to wear hard hat frontwards or backwards. Available on both vented and non-vented hard hats.

## NON-VENTED CLASS E



## VENTED CLASS C





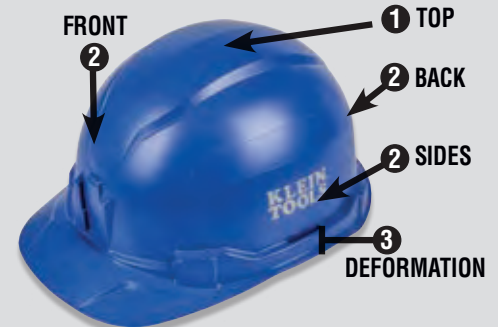
## Hard Hats

| HARD HATS |                                       |           |         |             |
|-----------|---------------------------------------|-----------|---------|-------------|
| Cat. No.  | Description                           | Hat Style | Venting | Shell Color |
| 60100     | Hard Hat, Non-Vented, Cap Style       | Cap       | No      | White       |
| 60105     | Hard Hat, Vented, Cap Style           | Cap       | Yes     | White       |
| 60248     | Hard Hat, Non-Vented, Cap Style       | Cap       | No      | Blue        |
| 60249     | Hard Hat, Non-Vented, Full Brim       | Full Brim | No      | Blue        |
| 60262     | Hard Hat, Vented, Full Brim           | Full Brim | Yes     | Yellow      |
| 60400     | Hard Hat, Non-Vented, Full Brim Style | Full Brim | No      | White       |
| 60401     | Hard Hat, Vented, Full Brim Style     | Full Brim | Yes     | White       |

## Hard Hats with Headlamps

| HARD HATS WITH HEADLAMPS |  |           |         |             |                                     |             |
|--------------------------|--|-----------|---------|-------------|-------------------------------------|-------------|
| Cat. No.                 | Description  | Hat Style | Venting | Shell Color | Lumens                              | Batteries   |
| 60107                    | Hard Hat, Non-Vented, Cap Style with Alkaline Headlamp     | Cap       | No      | White       | High: 150<br>Low: 50                | 3 x AAA     |
| 60107RL                  | Hard Hat, Non-Vented, Cap Style with Rechargeable Headlamp | Cap       | No      |             | Boost: 300<br>High: 215<br>Low: 100 | Lithium-Ion |
| 60113RL                  | Hard Hat, Vented, Cap Style with Rechargeable Headlamp     | Cap       | Yes     |             | Boost: 300<br>High: 215<br>Low: 100 | Lithium-Ion |
| 60406RL                  | Hard Hat, Non-Vented, Full Brim with Rechargeable Headlamp | Full Brim | No      |             | Boost: 300<br>High: 215<br>Low: 100 | Lithium-Ion |
| 60407                    | Hard Hat, Vented, Full Brim with Alkaline Headlamp         | Full Brim | Yes     |             | High: 150<br>Low: 50                | 3 x AAA     |
| 60407RL                  | Hard Hat, Vented, Full Brim with Rechargeable Headlamp     | Full Brim | Yes     |             | Boost: 300<br>High: 215<br>Low: 100 | Lithium-Ion |

### PROTECTION FROM IMPACT, PENETRATION, AND LATERAL DEFORMATION



(Shown: Cat. No. 60248: TYPE I, CLASS E)

### Klein Hard Hats are tested to the latest standards

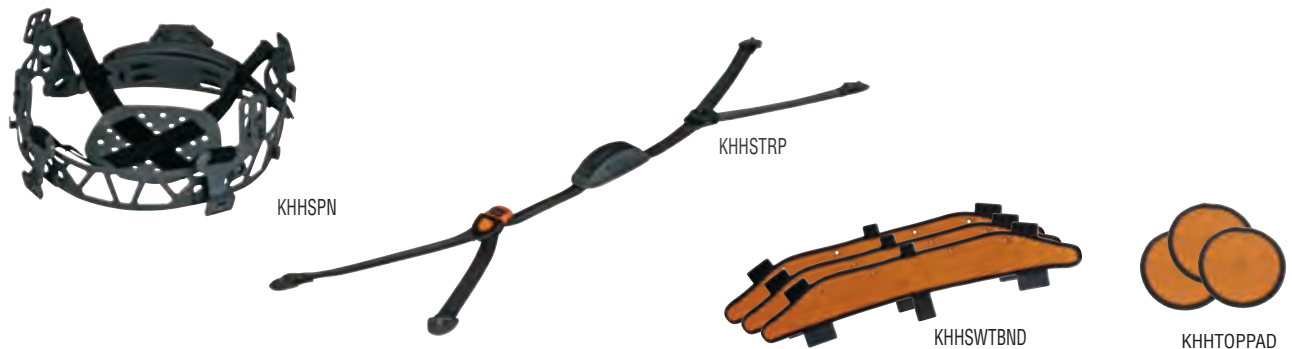
**TYPE I, CLASS E** ELECTRICAL PROTECTION UP TO 20KV  
**TYPE I, CLASS C** ADJUSTABLE SIDE VENTS HELP MANAGE AIR CIRCULATION

- 1 ANSI/ISEA Z89.1-2014 CSA Z94.1-15
- 2 EN12492:2012: 4.2.1.2, 4.2.1.3, 4.2.1.4
- 3 EN397:2012+A1:2012: 5.2.4

\*This hard hat provides LIMITED protection from small objects striking the top, front, back, left and right sides of the hard hat. This is NOT an ANSI/CSA Type II hard hat.

## Hard Hat Accessories

These accessories are designed specifically for use with Klein Tools Hard Hats.



| HARD HAT ACCESSORIES |   |                  |  |
|----------------------|---|------------------|--|
| Cat. No.             | Description                                 | Type             | Special Features                                 |
| KHHSPPN              | Klein Tools Hard Hat Replacement Suspension | Suspension       | Open Frame Allows Maximum Ventilation            |
| KHHSTRP              | Klein Tools Hard Hat Chin Strap             | Chin Strap       | Adjustable, Detachable and Replaceable           |
| KHHSWTBND            | Klein Tools Hard Hat Replacement Sweatband  | Sweatband        | Padded, Sweat Wicking, and Odor Resistant 3-pack |
| KHHTOPPAD            | Klein Tools Hard Hat Replacement Top Pad    | Hard Hat Top Pad | Padded, Sweat Wicking, and Odor Resistant 3-pack |



# PERSONAL PROTECTION & SAFETY EQUIPMENT



## Safety Glasses

High-Quality protective eyewear that feature an anti-fog coating that won't wear off. Scratch resistant lenses with UV protection block 99.9% of harmful UV rays.

- Superior impact protection: impact tested to the latest ANSI Z87.1+, CSA Z94.3 and MIL-PRF-32432A Clause 3.8.4.1 (Class 1-ballistics fragmentation) standards
- UV Protection: Tested to ANSI Z87.1 U6 standard, which effectively blocks 99.9% harmful UV rays
- Non-slip fit; rubber nose piece and temple tips for secure fit and grip
- True Color Recognition
- Optional Breakaway Lanyard (Cat. No. 60177) and Hard Case (Cat. No. 60176) both sold separately



**MIL-PRF**  
Clause 3.8.4.1  
Class 1

**CSA**  
Z94.3

**ANSI**  
Z87.1+



| Cat. No. | Description   | Frame Design | Lens Color   |
|----------|---|--------------|--------------|
| 60159    | Standard Safety Glasses, Clear Lens                 | Semi-Frame   | Clear        |
| 60160    | Standard Safety Glasses, Gray Lens                  |              | Gray         |
| 60161    | Professional Safety Glasses, Clear Lens             |              | Clear        |
| 60162    | Professional Safety Glasses, Gray Lens              | Full Frame   | Gray         |
| 60163    | Professional Safety Glasses, Full Frame, Clear Lens |              | Clear        |
| 60164    | Professional Safety Glasses, Full Frame, Gray Lens  | Semi-Frame   | Gray         |
| 60171    | Standard Safety Glasses, Clear Lens, 2-Pack         |              | Clear        |
| 60172    | PRO Safety Glasses-Wide, Clear Lens, 2-Pack         |              | Clear        |
| 60173    | PRO Safety Glasses-Semi-Frame, Combo Pack           |              | Clear / Gray |
| 60174    | Standard Safety Glasses-Semi Frame, Combo Pack      |              | Clear / Gray |

## High-Visibility Safety Vest

- Meets ANSI/ISEA 107-2015, Type R, Class 2 requirements
- Zipper closure in front for secure fit and breathable mesh fabric on back
- 2" retro-reflective stripes enhance visibility
- 2 large interior pockets, four exterior pockets with hook and loop closure, and exterior tab to attach radio clip or other items



60269

| Cat. No. | Chest Size                                 | Color                  | Number of Pockets |
|----------|--|------------------------|-------------------|
| 60269    | Medium/Large: 38 to 44" (96.5 to 111.8 cm) | High-Visibility Yellow | 8                 |
| 60268    | Extra-Large: 44 to 50" (111.8 to 127 cm)   |                        |                   |

## Neck and Face Warming Bands

- Double-layered face protection and warmth in cold weather conditions
- Cat. No. 60455 has full layer of fleece on the inside and a layer of anti-odor treatment fabric on the outside
- Cat. No. 60566 has two layers of anti-odor treatment fabric on the top and warm single layer of fleece on the bottom
- Secure fit and won't unravel with sewn ends
- One size fits most
- Machine washable



60455

60466

| Cat. No. | Description                     | Color | Material              | Length        |
|----------|---------------------------------|-------|-----------------------|---------------|
| 60455    | Neck and Face Warming Band      | Black | Polyester and Spandex | 20" (50.8 cm) |
| 60466    | Neck and Face Warming Half-Band |       |                       | 12" (30.5 cm) |

## Neck and Face Cooling Bands

- Klein Tools' Neck and Face Cooling Band can be worn wet or dry
- Secure fit and won't unravel with sewn elastic ends
- Cooling is immediate after getting wet and will last for hours
- Wear under a hard hat or alone
- Anti-odor treatment for long lasting freshness
- One Size Fits Most
- Machine washable



60465

60439

| Cat. No. | Description                | Color                  | Material                  | Overall Length |
|----------|----------------------------|------------------------|---------------------------|----------------|
| 60439    | Neck and Face Cooling Band | Blue                   | 92% Polyester, 8% Spandex | 20" (50.8 cm)  |
| 60465    |                            | High-Visibility Yellow |                           |                |

## Cooling Towel

- Klein Cooling Towels help you cool down during and after hard work or strenuous activities
- Retains moisture and stays cooler than ambient air for hours
- Multi-use towel; reactivate several times
- Comes in resealable bag with carabiner
- Machine washable



60230

| Cat. No. | Description               | Color | Soaking Time     | Material     | Overall Length  |
|----------|---------------------------|-------|------------------|--------------|-----------------|
| 60230    | Cooling PVA Towel, 2-Pack | Blue  | Under One Minute | PVA Material | 29.5" (74.9 cm) |


## P100 Half Mask Respirators

Light and ultra-compact respirators efficiently and effectively provide the wearer with P100 particulate protection without compromising comfort and wearability. P100 Filters are replaceable.

- Approved to NIOSH Standard (TC-84A-6949)
- Non-metal, latex and silicone-free lightweight TPE face piece
- Compatible with other PPE safety products including visors and welding helmets
- Ergonomic design provides maximum visibility to wearers
- HEPA filters-high efficiency particulate air filters offer hydro-phobic (water repellent) material and offer users the maximum particulate protection, greater than 99.97%
- Low profile filters provide unobstructed field of vision, and are replaceable (Cat. No. 60245)



| Cat. No.    | Description                                  | Standards           | Replaceable/Reusable | Material                       | Size         |
|-------------|--|---------------------|----------------------|--------------------------------|--------------|
| 60244       | P100 Half-Mask Respirator, Medium-Large      | NIOSH (TC-84A-6949) | Reusable             | TPE (Thermo Plastic Elastomer) | Medium/Large |
| 60246       | P100 Half-Mask Respirator, Small-Medium      | NIOSH (TC-84A-6949) | Reusable             | TPE (Thermo Plastic Elastomer) | Small/Medium |
| Replacement |  |                     |                      |                                |              |
| 60245       | P100 Half-Mask Respirator Replacement Filter | NIOSH (TC-84A-6949) | Replaceable          |                                |              |

 The P100 filter is part of the approved assembly and only when the above items are used together is the device approved for occupational applications. NOT FOR USE in atmospheres immediately dangerous to life or health.

## Reusable Face Mask With Replaceable Filters

Basic protection against non-harmful common airborne irritants

- Washable masks provide protection against non-toxic dust, pollen, mold, dander, and common airborne irritants
- Adjustable neck and head straps for optimal fit
- Breathing vents and nose clip help prevent glasses from fogging
- Replaceable Filters (60443) also sold separately
- Mask includes one filter and storage bag



| Cat. No. | Description                                       | Color |
|----------|---|-------|
| 60442    | Reusable Face Mask                                | Black |
| 60443    | Replacement Filters for Reusable Face Mask (3-pk) | Black |

 NOT Niosh approved. To ensure safe operations read and follow instructions.

## Lightweight Gel Knee Pads

- Lightweight knee pads have slip resistant rubber caps to grip kneeling surface for enhanced stability and balance
- Designed to disperse pressure and reduce fatigue while providing lightweight comfort and protection
- Cinch-tight straps provide comfortable, snug fit
- Knee pads are sold in pairs

| Cat. No. | Description               | Material   | Closure Type | Overall Length | Overall Height | Overall Width |
|----------|---------------------------|--|--------------|----------------|----------------|---------------|
| 60184    | Lightweight Gel Knee Pads | TPE 40%, Neoprene 20%, EVA Foam 20%, Polyester 15%, Nylon 5% | Clip         | 6" (15.2 cm)   | 12" (30.5 cm)  | 6" (15.2 cm)  |



# WORK GLOVES



## Touch-Screen Work Gloves with Cut-Level Resistance

- Touchscreen-capable fingertips keep you connected on the jobsite
- Nitrile dip technology for superior grip
- Seamless knit cuff for comfortable fit
- Machine washable



| Cat. No. | Cut-Level | Standard   | Color                                      | Size             | Package Quantity |
|----------|-----------|--|--|------------------|------------------|
| 60185    | 2         | ANSI A2 Cut Resistance; EN 388: 2015 4342 B          | Gray Knit, Black Coating                   | Large (9)        | 2-Pair           |
| 60197    |           |  |  | Extra-Large (10) |                  |
| 60186    | 4         | ANSI/ISEA 105-2016 Cut Level A4; EN 388: 2015 4442 D | High-Visibility Yellow Knit, Black Coating | Large (9)        | 2-Pair           |
| 60198    |           |  |  | Extra-Large (10) |                  |

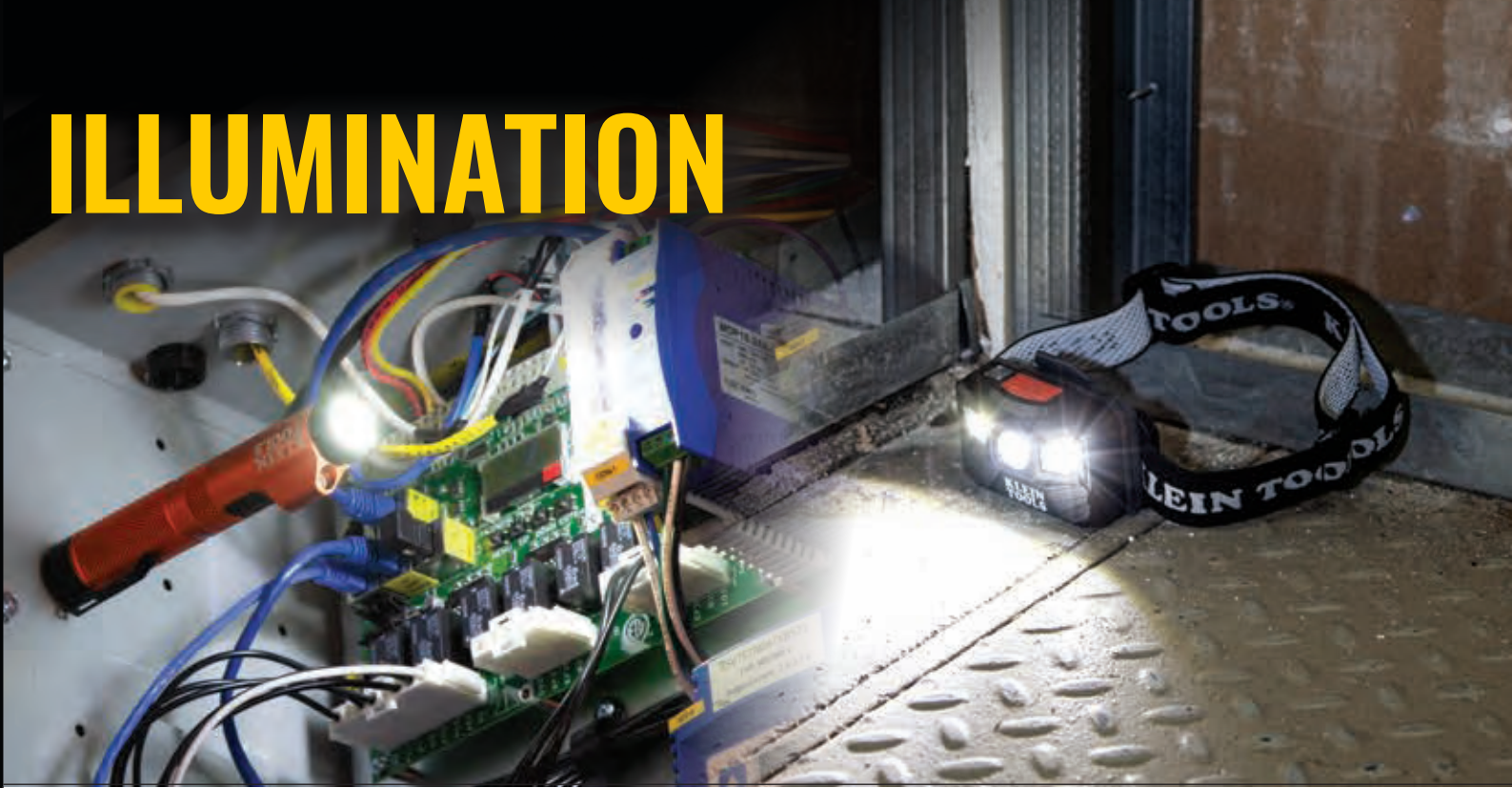
## Leather Work Gloves

- Genuine professional-grade goatskin leather
- Knuckle and finger protection with PVC guards
- Mesh back for breathability and ergonomic shape for dexterity
- EVA foam padding on palms for extra comfort
- Hook and loop closure on cuff strap provides snug fit

| Cat. No. | Color             | Size        | Package Quantity |
|----------|-------------------|-------------|------------------|
| 60188    | Natural Tan/Black | Large       | Pair             |
| 60189    |                   | Extra-Large |                  |



# ILLUMINATION



## Rechargeable Focus Flashlight with Laser

- The rechargeable focus flashlight with class IIIa red laser pinpoints out-of-reach objects
- LED light's twist focus bezel concentrates the light beam where it's needed
- Strong magnetic end cap for hands-free use
- Rated a durable 10' (3 m) drop test, IP54 water and dust resistant
- Battery gauge notifies when the battery is low; rechargeable via micro-USB cable (included)
- Removable pocket clip with an integrated lanyard hole
- When light is on for 5 seconds, the next click is off



56040

| Cat. No. | Description                              | Lumens                | Battery Life    | Batteries   | Drop Protection |
|----------|--|-----------------------|-----------------|-------------|-----------------|
| 56040    | Rechargeable Focus Flashlight with Laser | High: 350<br>Low: 125 | 6 hrs<br>12 hrs | Lithium-Ion | 10' (3.04 m)    |

## Rechargeable 400 Lumen Headlamp with Fabric Strap

- Rechargeable 400 lumen LED Headlamp has 3 bright lighting modes and long, all-day battery
- Headlamp automatically turns off after 3 minutes in bright light via auto-sensing technology, extending battery life
- Battery gauge indicates level of battery life with colored LED lights
- Smartly designed headlamp bracket also attaches directly to Klein® Hard Hats equipped with bracket system
- Slim profile with pivoting mount to allow up to a 64° lighting angle
- Adjustable fabric strap with woven silicone grip
- Durable headlamp: drop-test rating of 6', dust and water resistant



56048

| Cat. No. | Description  | Lumens                              | Battery Life              | Batteries   | Drop Protection |
|----------|--|-------------------------------------|---------------------------|-------------|-----------------|
| 56048    | Rechargeable Headlamp with Strap,<br>400 Lumen All-Day Runtime, Auto-Off | Boost: 400<br>High: 200<br>Low: 100 | 4 hrs<br>12 hrs<br>22 hrs | Lithium-Ion | 6' (1.8 m)      |





## Rechargeable Light Array Headlamp with Fabric Strap

- Rechargeable headlamp with a rectangular light array offers more usable light field
- Adjustable fabric strap with silicone grip comes equipped with a convenient marker and carpenter's pencil holder
- Mounts magnetically with a strong backside magnet for use as a work light
- Smartly designed headlamp bracket also attaches directly to Klein® Hard Hats equipped with bracket system
- Battery gauge indicates level of battery life with colored LED lights
- Durable headlamp: drop-test rating of 6', dust and water resistant



56049



| Cat. No. | Description  | Lumens                | Battery Life    | Batteries   | Drop Protection |
|----------|--|-----------------------|-----------------|-------------|-----------------|
| 56049    | Rechargeable Light Array Headlamp w/ Strap, 260 Lumen, All-Day Runtime | High: 260<br>Low: 125 | 9 hrs<br>14 hrs | Lithium-Ion | 6' (1.8 m)      |

## Rechargeable 400 Lumen Headlamp with Silicone Strap

- Rechargeable 400 lumen LED Headlamp has 3 bright lighting modes and long, all-day battery life
- Headlamp automatically turns off after 3 minutes in bright light via auto-sensing technology, extending battery life (feature can be disabled)
- Battery gauge indicates level of battery life with colored LED lights
- Wear with the adjustable silicone strap or the smartly designed bracket that attaches directly to Klein® Hard Hats (those equipped with bracket system)
- Slim profile with pivoting mount to allow up to a 64° lighting angle
- Durable headlamp: drop-test rating of 6', dust and water resistant



56064

| Cat. No. | Description  | Lumens                              | Battery Life              | Batteries   | Drop Protection |
|----------|--|-------------------------------------|---------------------------|-------------|-----------------|
| 56064    | Rechargeable Headlamp w/ Silicone Strap, 400 L All-Day Runtime, Auto-Off | Boost: 400<br>High: 200<br>Low: 100 | 4 hrs<br>12 hrs<br>22 hrs | Lithium-Ion | 6' (1.8 m)      |



## Rechargeable Headlamp and Worklight

- Rechargeable headlamp attaches directly to Klein® Hard Hats (equipped with bracket system)
- Mount headlamp magnetically with a strong backside magnet for use as a work light
- Battery gauge indicates level of battery life with colored LED lights
- Slimmer profile light with pivoting mount allows up to a 64° lighting angle
- Durable headlamp: drop-test rating of 6', dust and water resistant



| Cat. No. | Description   | Lumens                              | Battery Life             | Batteries   | Drop Protection |
|----------|---|-------------------------------------|--------------------------|-------------|-----------------|
| 56062    | Rechargeable Headlamp and Worklight, 300 Lumens All-Day Runtime | Boost: 300<br>High: 215<br>Low: 100 | 4 hrs<br>9 hrs<br>14 hrs | Lithium-Ion | 6' (1.8 m)      |

## Headlamp Bracket with Fabric Strap

- Smartly designed bracket attaches directly to Klein® headlamps equipped with mounting bracket
- Comfort fabric strap contains just enough silicone grip to fit comfortably on your head and stays securely on a hardhat or cap
- Strap length easily adjusts
- Comes equipped with a convenient marker and carpenter pencil holder



| Cat. No. | Description                        | Overall Length | Material                                       |
|----------|------------------------------------|----------------|--|
| 56060    | Headlamp Bracket with Fabric Strap | 24" (61 cm)    | ABS/PC, Silicone Weave in Nylon Elastic Fabric |

## Tradesman Tumbler

- Keeps liquid cold up to 12 hours and hot up to 4 hours
- Designed with double wall vacuum insulated stainless steel
- Rugged, textured silicon outer sleeve for slip-resistance
- Unique threaded lid design allows easy twisting with gloves on or off
- Flip-top lid locks to form a spill-resistant seal
- Removable rare earth magnetic lanyard secures tumbler to metal objects
- Made from stainless steel and other BPA-free food grade materials



| Cat. No. | Description       | Color        | Size           |
|----------|-------------------|--------------|----------------|
| 55580    | Tradesman Tumbler | Black/Orange | 20 oz (0.59 L) |





# JOBSITE ACCESSORIES



## Bluetooth® Speaker with Magnetic Strap

- Rechargeable Wireless Speaker offers crisp, clean sound and multiple mounting options
- Connects wirelessly up to 32' (10 m) or via a wired auxiliary input (aux cable included)
- Hang by the integrated hang hole or secure the mounting strap around conduit, handles or bags
- Mounts with a powerful magnet embedded in the strap
- Able to answer calls hands-free with the built-in speakerphone
- 10 hours of use from a rechargeable battery; energy saving powers off after 10 minutes of inactivity
- LED light indicates connectivity and battery level
- Rugged speaker rated IP54 dust- and water-resistant and 10' (3 m) drop test
- Includes 1/8" (0.4 cm) stereo auxiliary cable and USB-C to Standard USB charging cable



AEPJS2

| Cat. No. | Description                            | Overall Length | Overall Height | Overall Width |
|----------|--|----------------|----------------|---------------|
| AEPJS2   | Bluetooth® Speaker with Magnetic Strap | 4.1" (10.4 cm) | 4.2" (10.7 cm) | 1.6" (4.0 cm) |

\*The Bluetooth® word mark and logos are registered trademarks owned by Bluetooth SIG, Inc. and any use of such marks by Klein Tools, Inc. is under license.

## Rechargeable Personal Jobsite Fan

- Personal fan has multiple mounting options perfect for the job site
- Arm base rotates and cage spins 360° to aim airflow in any direction
- Two powerful magnets and a hang hole are incorporated into the base for mounting
- Base forms a strong clamp for attaching to studs or conduit
- Features two long-lasting fan modes: Low for 9 hours; High for 5 hours



PJSFM1

| Cat. No. | Description                       | Mounting Type                          | Color             | Overall Length | Overall Height   | Overall Width   | Battery Life          |
|----------|-----------------------------------|--|-------------------|----------------|------------------|-----------------|-----------------------|
| PJSFM1   | Rechargeable Personal Jobsite Fan | Magnets, Clamp, Hang Hole, Sit on Base | Orange, Dark Gray | 9" (22.9 cm)   | 10.52" (26.7 cm) | 4.15" (10.5 cm) | High 5 hrs, Low 9 hrs |



# MODULAR TOOL POUCH SYSTEM



All pouches include belt clip for secure attachment to Modular Belt. 32° clip design allows pouch to move with you to keep contents upright.

## Tradesman Pro™ Modular Tool Pouch System



- Build your own tool belt and storage system
- Quick-release clip design on four styles of pouches allows for easy change from belt to wall rack
- 32° clip design on pouches to keep contents upright when changing from belt to wall rack
- Pouches constructed of 1680d ballistic weave for durability
- Wall Rack securely stores three Modular Tool Pouches, and comes with mounting hardware to secure in garage, shop, or work van
- Tool Belts with thick, rugged belt ends have side handles for ease of lifting, metal connection points to attach suspenders (Cat. No. 50400) for extra support, and loop tape measure holder
- Patent Pending

### Modular Pouches

| Cat. No. | Description                      | Number of Pockets | Belt Connection | Material              | Belt Width        |
|----------|----------------------------------|-------------------|-----------------|-----------------------|-------------------|
| 55912    | Piping Tool Pouch with Belt Clip | 7                 | Click Lock™     | 1680d Ballistic Weave | Up to 2" (5.1 cm) |
| 55913    | Parts Pouch with Belt Clip       | 7                 |                 |                       |                   |
| 55914    | Trimming Pouch with Belt Clip    | 8                 |                 |                       |                   |
| 55917    | Drill Pouch with Belt Clip       | 4                 |                 |                       |                   |

### Modular Wall Rack

| Cat. No. | Description | Material                     | Length      | Height        | Belt Width  |
|----------|-------------|------------------------------|-------------|---------------|-------------|
| 55921    | Wall Rack   | Heavy-Duty Anodized Aluminum | 24" (61 cm) | 1.5" (3.8 cm) | 2" (5.1 cm) |

### Modular Tool Belts

| Cat. No. | Description    | Material                        | Waist Size                     | Overall Width |
|----------|----------------|---------------------------------|--------------------------------|---------------|
| 55918    | Tool Belt - M  | Ballistic Polyester and Leather | 31" to 34" (78.7 to 86.4 cm)   | 5" (12.7 cm)  |
| 55919    | Tool Belt - L  |                                 | 35" to 39" (88.9 to 99.1 cm)   |               |
| 55920    | Tool Belt - XL |                                 | 40" to 44" (101.6 to 111.8 cm) |               |



55917



55914



55912



55913



55921



55920

**⚠WARNING:** This is NOT an occupational protective belt. NOT for fall arrest or back support.

# CANVAS BUCKETS



## Heavy-Duty Drawstring Close Buckets

- Load rated for 100 lb (45.4 kg) with easy-to-close drawstring tops
- Durable, No. 4 heavy-duty canvas will withstand the toughest job sites
- Double-locking carabiner for securely hoisting the bucket
- Interior D-rings for tether connection
- Reinforced bottom for added durability
- Web handles extend down the side for additional strength

| Cat. No.  | Overall Height | Load Rating       | Diameter         | Material        | Special Features                         |
|-----------|----------------|-------------------|------------------|-----------------|--|
| 5114DSC   | 17" (43.2 cm)  | 100 lb<br>(45 kg) | 12"<br>(30.5 cm) | No. 4<br>Canvas | Double-Locking Carabiner,<br>Swivel Snap |
| 5114DSC22 | 22" (55.9 cm)  |                   |                  |                 |  |



**LOAD RATED**  
100 lbs. (45 kg)



Interior D-rings for tether connection



Drawstring close top allows for easy opening and closing



Double-locking carabiner



5114DSC22

5114DSC

**⚠️ WARNINGS:**

- Inspect for damage before each use.
- Remove from service if bucket shows signs of wear.
- Never exceed the working load limit.



# ELECTRICAL TESTING & INSTALLATION

Our comprehensive line of verification VDV tools and testers were created for residential or commercial systems.

Crafted for optimum durability, reliability and functionality, our line of test and measurement equipment is engineered with the user in mind.

Punchdown Tools  
Cable Management  
Cable Testing  
Clamp Meters  
Thermometers  
Electrical Testers  
Specialty Testers

# VOICE/ DATA/ VIDEO



## Impact Punchdown Tool

- Use to punch data cables into 66/110 panels and blocks
- Terminates and cuts wires in CAT3, CAT5e and CAT6/6A cable in one step
- Traditional punchdown-style form with a cushioned, non-slip handle
- Metal injection molding (MIM) blade for durability (included)
- Provides precise, reliable connections every time
- Spring loaded for fast, low effort seating and terminating
- Bayonet style (twist & lock) socket accepts most manufacturers' blades
- Extended reach blade (Cat. No. VDV427-110) for working on active panels with preexisting connections (sold separately)
- Replacement blades available (Cat. No. VDV427-104)



| Cat. No.   | Description                                    | Configuration 1 End   | Configuration 2 End  | Includes   |
|------------|--|-----------------------|----------------------|--|
| VDV427-300 | Impact Punchdown Tool, 66/110 Blade            | 110 Terminate and Cut | 66 Terminate and Cut | Punchdown Tool, Extended Reach Blade, Spudger, Wire Pick |
| VDV427-104 | Dura-Blade™ 66/110 Cut Punchdown Blade         |                       |                      | 1 Blade  |
| VDV427-110 | Extended Reach Blade for Impact Punchdown Tool |                       |                      | 1 Blade  |

## Loose Cable Stapler and Staples

- Drive insulated staples for Voice/Data/Video, NM (Romex®) nonmetallic sheathed cable with one hand
- Stapler has forward action for stability and single-handed operation
- Works solely with Klein Tools staples (Cat. Nos. 450-001, 450-002, 450-003)
- Adjustable to 1/4", 5/16" and 11/32" staple sizes
- Adjustable channel on mounting face guides and protects cable
- Secured staple push rod stays attached - cannot be lost
- Staples are UL listed and are designed with plastic insulation to protect cable



| Cat. No.   | Description                        | Weight                     | For Use With   |   |
|--|------------------------------------|----------------------------|--|---|
| 450-100  | Loose Cable Stapler                | 1.7 lb (0.77 kg)           | Voice, Data, Video, NM (Romex®) Nonmetallic Sheathed Cable |   |
| <b>Insulated Staples — Sold separately in 300 qty. packs</b> |                                    |                            |  |   |
| Cat. No.   | Description                        | Size (H x W)               | Leg Length   | For Use With  |
| 450-001  | Staples, 1/4" x 5/16" Insulated    | 1/4" x 5/16" (6 mm x 8 mm) | 11/16" (17 mm)   | CAT3/5e Data Cable; Speaker Wire  |
| 450-002  | Staples, 5/16" x 5/16" Insulated   | 5/16" (8 mm)               |  | CAT3/5e/6/6A Data Cable; RG59/6/6Q Coaxial Cable  |
| 450-003  | Staples, 11/32" x 19/32" Insulated | 19/32" (15 mm)             | 7/8" (22 mm)   | CAT3/5e/6/6A Data Cable (x2, x3); RG59/6/6Q Coax Cable (x2); NM (Romex) 14-3, 14-3G, 12-3 |

\*Romex® is a registered trademark of Southwire Company



# VOICE/DATA/VIDEO TESTING TOOLS



## Tone & Probe Test and Trace Kit

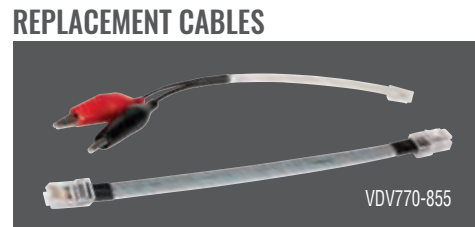
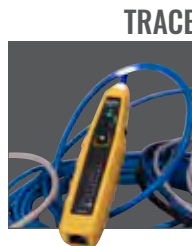
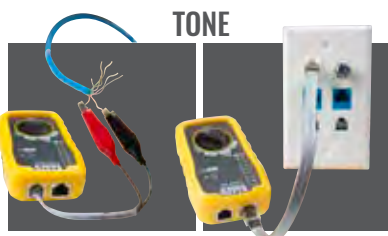
- Provides simple toning and tracing of non-energized wire
- Responsive probe with durable, non-metallic, conductive tip
- Alligator clips for unterminated wires
- RJ45 to RJ45 test cable
- Toner and probe together perform pin to pin wire map test
- Work light on probe tip for use in dark spaces



VDV500-705



| Cat. No.   | Description  | Includes  |
|------------|--|---|
| VDV500-705 | Tone & Probe Test and Trace Kit                        | RJ45 Cable, RJ12 and Alligator Clip Cable, 4X Batteries |
| VDV770-855 | Replacement Cables for Tone & Probe Test and Trace Kit | Alligator Clips to RJ11 Plug; RJ45 to RJ45              |



VDV770-855



## Scout® Pro 3 Tester Kits

Next generation, tester kits feature a larger, backlit display, cable length and now Power over Ethernet (PoE)

- Test voice (RJ11/12), data (RJ45) and video (coax F-connector) cables
- Measure cable length (up to 2,000 feet)
- Backlit LCD screen displays cable length, wiremap, cable ID and test results
- Detect, identify and test Power over Ethernet (PoE)
- Test for Open, Short, Miswire or Split-Pair faults
- Hub Blink mode to identify port location on a hub or a switch
- Includes voltage warning, shield detection, auto power-off and low battery indicator
- Remote options include up to 12 Test + Map™ remotes and up to 18 locator remotes
- All kits include a Self-Storing Test + Map™ Remote
- These models replace the Scout® Pro 2 series of tester kits



| Included                              | Cat. No. | VDV501-851<br>Starter Kit | VDV501-852<br>Locator Remote Kit | VDV501-853<br>Smart Remote Kit | VDV770-850<br>Test + Map™<br>Remote Upgrade Kit | VDV770-851<br>Test + Map™<br>Remote Expansion Kit |
|---------------------------------------|----------|---------------------------|----------------------------------|--------------------------------|---|---|
| Scout® Pro 3 Tester                   |          | ●                         | ●                                | ●                              | –   | –   |
| Self-Storing Remote (#1)              |          | ●                         | ●                                | ●                              | –   | –   |
| Test + Map™ Remotes                   |          | –                         | –                                | #2 - #6                        | #2 - #6   | #7 - #12  |
| RJ45 Locator Remotes                  |          | 5                         | 18                               | –                              | –   | –   |
| F-Coax Locator Remotes                |          | 5                         | 18                               | –                              | –   | –   |
| Coax F Adapter (female-to-female)     |          | 1                         | 2                                | 7                              | 6   | 6   |
| Coax Barrel Adapters (male-to-female) |          | –                         | –                                | 7                              | 2   | –   |
| RJ45 Jumper Cables (6")               |          | –                         | 2                                | 7                              | 7   | 6   |
| RJ11 Jumper Cables (6")               |          | –                         | 2                                | 2                              | 2   | 2   |
| RJ12 Jumper Cables (6")               |          | –                         | 2                                | 2                              | 2   | 2   |
| 9V Alkaline Battery                   |          | ●                         | ●                                | ●                              | –   | –   |
| Carrying Case                         |          | –                         | ●<br>VDV770-126                  | ●<br>VDV770-125                | ●<br>VDV770-125                                 | ●<br>VDV770-127                                   |



# DIGITAL CLAMP METERS



Large Jaw Size  
1.38" (3.51 cm)

NCV Sensing Antenna detects presence of AC voltage

Arrow Markings for optimal wire placement

Test Lead Holder for hands-free operation

## Digital Clamp Meters

New Capabilities offered at the same cost!

- Rugged industrial design –improved durability, look and feel
- Integrated NCV tester on all meters with audible and visual indicators
- Test lead holder on side of clamp for hands-free operation
- True RMS added to CL220
- Improved temperature accuracy on all models
- Upgraded lantern-style test-leads on all models
- Larger jaw opening – now 1.38"
- New magnetic hanger without a strap clips directly to the back of meters



CL120



CL220



CL320



CL390



NCVT Light for visual alarm of AC voltage

Data HOLD on/off button

Function Selection Switch; functions vary on models

NCV SEL Mode on/off button

High Visibility Display for optimal viewability

(Shown: Cat. No. CL220)

Test Lead Input Jacks; easy access on front



| Cat. No. | Description   | Batteries | Jaw Size      | Included   | Overall Length | Overall Height | Overall Width |
|----------|---|-----------|---------------|--|----------------|----------------|---------------|
| CL120    | 400A AC Clamp Meter   | 3 x AAA   | 1.6" (4.1 cm) | Carrying Case, Instructions, Test Leads, and Batteries   | 8.5" (21.5 cm) | 1.5" (3.8 cm)  | 3.5" (8.9 cm) |
| CL120KIT | 400A AC Clamp Meter, Line Splitter, GFCI Tester                 |           |               | Cat. No. CL120 Digital Clamp Meter with Test Leads and Carrying Case, Cat. No. 69409 Line Splitter 10x, and Cat. No. RT210 GFCI Receptacle Tester, Batteries |                |                |               |
| CL220    | 400A AC TRMS Clamp Meter with Temperature                       |           |               | Carrying Case, Instructions, Test Leads, Thermocouple, and Batteries   |                |                |               |
| CL320    | HVAC 400A AC TRMS Clamp Meter with Temperature and DC Micro Amp |           |               | Carrying Case, Instructions, Test Leads, Thermocouple, and Batteries   |                |                |               |
| CL390    | 400A AC/DC TRMS Clamp Meter with Temperature and DC Micro Amp   |           |               | Carrying Case, Instructions, Test Leads, Thermocouple, and Batteries   |                |                |               |







| Features                        | CL390                         | CL320                         | CL220                         | CL120                  |
|---------------------------------|-------------------------------|-------------------------------|-------------------------------|------------------------|
| Drop Protection                 | 6.6 ft. (2 m)                 | 6.6 ft. (2 m)                 | 6.6 ft. (2 m)                 | 6.6 ft. (2 m)          |
| Ingress Protection              | -                             | -                             | -                             | -                      |
| Safety                          | CAT III 600V                  | CAT III 600V                  | CAT III 600V                  | CAT III 600V           |
| AC Voltage (Volts)              | 600V                          | 600V                          | 600V                          | 600V                   |
| DC Voltage (Volts)              | 600V                          | 600V                          | 600V                          | 600V                   |
| AC + DC Voltage                 | -                             | -                             | -                             | -                      |
| AC Current (Amps)               | 400A                          | 400A                          | 400A                          | 400A                   |
| DC Current (Amps)               | 400A                          | -                             | -                             | -                      |
| Ohms (Resistance)               | 40MΩ                          | 40MΩ                          | 20MΩ                          | 20MΩ                   |
| AC Millivolts                   | ●                             | -                             | ●                             | ●                      |
| DC Millivolts                   | ●                             | ●                             | ●                             | ●                      |
| DC Microamps                    | ●                             | ●                             | -                             | -                      |
| True RMS                        | ●                             | ●                             | ●                             | -                      |
| Audible Continuity              | ●                             | ●                             | ●                             | ●                      |
| Backlight                       | Reverse Contrast Display      | ●                             | ●                             | ●                      |
| Temperature                     | -40° - 1832°F (-40° - 1000°C) | -40° - 1832°F (-40° - 1000°C) | -40° - 1832°F (-40° - 1000°C) | -                      |
| Differential Temperature        | -                             | -                             | -                             | -                      |
| Digital Temperature Calibration | -                             | -                             | -                             | -                      |
| Low Impedance                   | -                             | -                             | -                             | -                      |
| Low-Pass Filter                 | -                             | -                             | -                             | -                      |
| Inrush Current                  | -                             | -                             | -                             | -                      |
| Non-Contact Voltage Testing     | ●                             | ●                             | ●                             | ●                      |
| Auto Ranging                    | ●                             | ●                             | ●                             | ●                      |
| Range Hold                      | ●                             | ●                             | ●                             | ●                      |
| Data Hold                       | ●                             | ●                             | ●                             | ●                      |
| Diode Test                      | ●                             | ●                             | -                             | -                      |
| Capacitance Test                | 4000 μF                       | 4000 μF                       | -                             | -                      |
| Frequency / Duty Cycle          | 10Hz - 60kHz                  | 10Hz - 60kHz                  | -                             | -                      |
| Max / Min                       | ●                             | ●                             | MAX only                      | MAX only               |
| Relative Mode                   | ●                             | -                             | -                             | -                      |
| Magnet                          | Available As Accessory        | Available As Accessory        | Available As Accessory        | Available As Accessory |
| Worklight                       | -                             | -                             | -                             | -                      |
| Auto-Power Off                  | ●                             | ●                             | ●                             | ●                      |
| LCD Display Count               | 4000                          | 4000                          | 2000                          | 2000                   |



## CL120 KIT

Cat. No. CL120 Digital Clamp Meter with Test Leads and Carrying Case, Cat. No. 69409 Line Splitter 10x, and Cat. No. RT210 GFCI Receptacle Tester, Batteries



| Cat. No. | Description                                     |
|----------|---|
| CL120KIT | 400A AC Clamp Meter, Line Splitter, GFCI Tester |

## Rare Earth Magnetic Hanger

- Magnetic Hanger allows the user to safely work hands-free
- Constructed with powerful rare earth magnets
- Clips directly onto the back of the meter with no strap
- View measurement readings at eye-level by attaching to ferromagnetic surfaces
- Easy to clip on and off



69445

| Cat. No. | Description                          | Application  |
|----------|--------------------------------------|--|
| 69445    | Rare Earth Magnetic Hanger, No Strap | Hands Free Measurements with Select Clamps and Multimeters |

| For Use With  |
|---|
| CL220, CL120, CL320, CL390, CL450, CL600, CL700, CL800, CL900, and Select Multimeters |

- ⚠ WARNINGS:** To ensure safe operation and service of the tester, follow these instructions. Failure to observe these warnings can result in severe injury or death.
- Before each use, verify meter operation by measuring a known voltage or current.
  - Never use the meter on a circuit with voltages that exceed the category based rating of this meter.
  - Do not use the meter during electrical storms or in wet weather.
  - Do not use the meter or test leads if they appear to be damaged.
  - Ensure meter leads are fully seated, and keep fingers away from the metal probe contacts when making measurements.
  - Do not open the meter to replace batteries while the probes are connected.
  - Never assume neutral or ground wires are de-energized. Neutrals in multi-wire branch circuits may be energized when disconnected and must be retested before handling.
  - Use caution when working with voltages above 60V DC, or 25V AC RMS. Such voltages pose a shock hazard.
  - To avoid false readings that can lead to electrical shock, replace batteries if a low battery indicator appears.
  - Unless measuring voltage or current, shut off and lock out power before measuring resistance or capacitance.
  - Always adhere to local and national safety codes. Use individual protective equipment to prevent shock and arc blast injury where hazardous live conductors are exposed.

# ELECTRICAL TEST KITS



CL120VP



MM320KIT



NCVT3PKIT

## Electrical Test Kits

Best-Sellers in Convenient Value Kits

| Cat. No. | Description                            | Includes  |
|----------|--|---|
| CL120VP  | Clamp Meter Electrical Test Kit        | CL120 Clamp Meter with Test Leads, NCVT-3P Dual Range Non-Contact Voltage Tester with Flashlight, ET40 Electronic AC/DC Voltage Tester, RT210 GFCI Receptacle Tester, Carrying Case, Instructions, and All Needed Batteries |
| MM320KIT | Digital Multimeter Electrical Test Kit | MM320 Auto-Ranging Digital Multimeter, NCVT-3P Dual Range Non-Contact Voltage Tester with Flashlight, ET45 AC/DC Voltage Tester, RT210 GFCI Receptacle Tester, Carrying Case, Instructions, and All Needed Batteries        |
| NCVT3KIT | Electrical Test Kit                    | NCVT-3P Dual Range Non-Contact Voltage Tester with Flashlight, ET45 AC/DC Voltage Tester, and All Needed Batteries  |

## Infrared Digital Thermometer with Targeting Laser

- Infrared Thermometer has an optical resolution (distance-to-spot) of 10:1
- Features include targeting laser; automatic hold; backlit display; low battery, auto power-off
- Measurement range is -4° to 752° Fahrenheit (-20° to 400° Celsius)
- Drop protection to 6.6' (2 m); certified to IEC EN 61326-1.2006, EN60825.1.1994+A2.2001+A1.2002
- Fixed emissivity at 0.95
- Includes custom pouch and a 9V battery
- Not a medical device; thermometer is NOT intended for use on people or animals



| Cat. No. | Description   | Batteries | Overall Length  | Overall Width  | Overall Height  |
|----------|---|-----------|-----------------|----------------|-----------------|
| IR1      | Infrared Digital Thermometer with Targeting Laser, 10:1 | 1 x 9V    | 6.01" (15.3 cm) | 1.24" (3.1 cm) | 4.14" (10.5 cm) |

IR1



# NON-CONTACT VOLTAGE TESTERS



## Non-Contact Voltage Testers

- Dual-range capabilities allow tester to detect from 12 to 1000V AC or 70 to 1000V AC for a broad variety of low-voltage or standard voltage applications
- Detects voltage with simultaneous visual and audible voltage indicators
- Lightweight, compact tool with pocket clip provides convenient storage and quick access
- Auto power-off feature conserves and extends battery life
- Screw-thread battery cap with O-ring
- CAT IV 1000V rating provides expanded operation and protection
- Cat. No. NCVT-3P features a bright flashlight to illuminate work area and may be used independent of voltage detection function
- Cat. No. NCVT-5A has a bright integrated laser pointer for identifying objects of interest at distance on the jobsite

## Kits

- Cat. No. NCVT2PKIT includes Non-Contact Voltage Tester NCVT2P with 2 x AAA Batteries and a receptacle tester designed to detect the most common wiring problems in standard receptacles
- NCVT5KIT includes the Cat. No. RT210 Receptacle Tester which detects the most common wiring problems in both standard and GFCI receptacles

| Features                  | NCVT-2P  | NCVT-3P  | NCVT-5A  |
|---------------------------|--|--|--|
| Description               | Dual Range   | Dual Range with Flashlight                               | Dual Range with Laser Pointer                            |
| Drop Protection           | 6.6' (2 m)   | 6.6' (2 m)   | 9.8' (3 m)   |
| Ingress Protection        | IP54   | IP67   | -  |
| Safety and Standards      | CAT IV 1000V, CE   | CAT IV 1000V, CE   | CAT IV 1000V   |
| Voltage                   | <b>Mode 1:</b> 12-1000V AC<br><b>Mode 2:</b> 70-1000V AC | <b>Mode 1:</b> 12-1000V AC<br><b>Mode 2:</b> 70-1000V AC | <b>Mode 1:</b> 12-1000V AC<br><b>Mode 2:</b> 70-1000V AC |
| Frequency Range           | 50-500Hz   | 50-500Hz   | 50-500Hz   |
| Audible and Visual Alarms | ●  | ●  | ●  |
| Auto-Power Off            | ●  | ●  | ●  |
| Temperature               | -  | -  | -  |
| Laser                     | -  | -  | Class 3a   |
| Flashlight                | -  | ●  | -  |
| Distance Measuring        | -  | -  | -  |
| LCD Display               | -  | -  | -  |
| Pocket Clip               | ●  | ●  | ●  |
| Batteries Included        | 2 x AAA  | 2 x AAA  | 2 x AAA  |
| Overall Length            | 5.83" (148.0 mm)   | 5.83" (148.0 mm)   | 6.00" (152.4 mm)   |
| Overall Height            | 1.09" (2.8 cm)   | 1.09" (2.8 cm)   | 6" (15.2 cm)   |
| Overall Width             | 0.86" (2.2cm)  | 0.93" (2.4 cm)   | 1.16" (2.9 cm)   |



## Borescope for Android® Devices

- Borescope connects to Android® on-the-go (OTG) version 4.0 or higher devices; NOT for iPhones® or iPads®
- Waterproof IP67 9 mm camera surrounded by 6 LEDs for high quality 640 x 480 pixel images
- Capture and share images and video via text or email using the Klein Tools App available for download at [kleintools.com/ET16](http://kleintools.com/ET16) (not available anywhere else)
- Armored 10' (3 m) gooseneck cable for extended reach
- Direct USB Type-C connection with adapter for micro-USB
- No batteries needed; Powered by device connection



ET16

| Cat. No. | Resolution       | Includes  | Overall Length | Overall Height | Overall Width |
|----------|------------------|---|----------------|----------------|---------------|
| ET16     | 640 x 480 pixels | Borescope with 10' Gooseneck, USB Adapters, Carrying Case, and Instruction Manual | 3.7" (9.4 cm)  | 0.95" (2.4 cm) | 1.3" (3.3 cm) |

Android® is a registered trademark of Google LLC. iPhone® is a registered trademark of Apple Inc.

## GFCI Receptacle Tester with LCD

- GFCI Receptacle Tester features a large backlit LCD readout of voltage and clear indication of wiring faults
- LCD readout shows the time required to trip a GFCI device
- Detect and identify common wiring faults
- Auto-Hold is convenient for hard-to-reach outlets
- Bright green and red LEDs illuminate for visual indicators
- CAT II 135V safety rating
- Durable 6.6' (2 m) drop protection
- For use on 3-wire, North American 120V electrical outlets only



RT250



Featuring patent pending detection of Open Neutral Open Ground wiring fault

| Cat. No. | Description                     | GFCI                               | Overall Length | Overall Height | Overall Width |
|----------|---------------------------------|------------------------------------|----------------|----------------|---------------|
| RT250    | GFCI Receptacle Tester with LCD | Yes, Including Time to Trip Device | 4.5" (11.4 cm) | 1.1" (27.9 cm) | 2.0" (5.1 cm) |

## Rechargeable Thermal Imager

- Thermal Imager has over 10,000 pixels to troubleshoot hot and cold spots
- Adjustable emissivity from 0.10 to 0.99
- Store and share images with optional microSD® Card
- User selectable high and low temperature alarms from -4 to 752° Fahrenheit (-20 to 400° Celsius)
- Select color palettes to best capture the event
- Rechargeable lithium-ion battery
- Includes thermal imager, micro-USB® charging cable, carrying case, and instructions



TI250



| Cat. No. | Description                 | Display               | Display Resolution | Temperature Range            | Batteries   |
|----------|-----------------------------|-----------------------|--------------------|------------------------------|-------------|
| TI250    | Rechargeable Thermal Imager | 2.4" (6.1 cm) TFT LCD | 10,800 Pixels      | -4° to 752°F (-20° to 400°C) | Lithium-Ion |

\*micro-USB® is a registered trademark of SD-3C, LLC.



# CONSTRUCTION & STRUCTURAL TOOLS

Impact tools designed and engineered by Klein Tools in the USA to help linemen work more efficiently by reducing time and effort on the job. All with the performance and durability professionals expect from Klein.

Impact Tools  
2-in-1 Impact Sockets  
Parallel Jaw Grips

# IMPACT TOOLS



## Impact Tools

- Featuring 210 ft-lbs. of torque for professional impact fastening and drilling
- Compact designs provide excellent balance and control in tight spaces or overhead applications
- Engineered and designed by Klein Tools in the USA
- Impact rated for installing and removing threaded fasteners into wood, metal and concrete
- BAT20-CW features a 1/2" male square drive with a pin detente design for maximum socket retention
- Kits include 4 Ah Batteries, a charger and bag
- Powered by DeWALT® 20V lithium-ion batteries (sold separately)



BAT20CD



BAT20CW1

POWERED BY  
**DEWALT®**

| Cat. No. | Description                           | Drive Size             | Rating            | Maximum Speed | Voltage         | Included                            |
|----------|---------------------------------------|------------------------|-------------------|---------------|-----------------|-------------------------------------|
| BAT20CD1 | 1/4" Compact Impact Driver Kit        | 1/4" Hex Quick Connect | 210 ft-lbs Torque | 2200 RPM      | 20V Lithium Ion | (2) 4 Ah Batteries, Charger and Bag |
| BAT20CD  | 1/4" Compact Impact Driver, Tool Only |                        |                   |               |                 | Tool Only                           |
| BAT20CW1 | 1/2" Compact Impact Wrench Kit        | 1/2" Pin Detent        | 210 ft-lbs Torque | 2200 RPM      | 20V Lithium Ion | (2) 4 Ah Batteries, Charger and Bag |
| BAT20CW  | 1/2" Compact Impact Wrench, Tool Only |                        |                   |               |                 | Tool Only                           |

\*DeWALT® is a registered trademark of the Black & Decker corporation.





## 90° Impact Wrench

- Right angle impact wrench provides versatility for better reach around a utility pole with less effort
- Up to 300 ft-lbs of max torque for driving fasteners into wood, metal and concrete
- Patent pending bolt-through hole design for longer bolts
- Engineered and designed by Klein Tools in the USA
- Work light illuminates darker spaces
- Kit include 4 Ah Batteries, a charger and bag
- Powered by DeWALT® 20V lithium-ion batteries



Patent Pending  
Through Hole  
Design for  
longer bolts



BAT20LWA



BAT20LWS



BAT20LW1

POWERED BY  
**DEWALT®**

| Cat. No. | Description                  | Drive Size                      | Rating     | Maximum Speed | Voltage         | Included                                  |
|----------|------------------------------|---------------------------------|------------|---------------|-----------------|---|
| BAT20LW1 | 90° Impact Wrench Kit        | 1-1/8", 1", 13/16", 3/4" Square | 300 ft-lbs | 1800 PRM      | 20V Lithium Ion | Tool, (2) 4 Ah Batteries, Charger and Bag |
| BAT20LW  | 90° Impact Wrench, Tool Only |                                 |            |               |                 | Tool Only                                 |

### Accessories

| Cat. No. | Description                              | Drive Size | Socket Size  | Number of Points |
|----------|--|------------|--------------|------------------|
| BAT20LWA | 7/16" Adapter for 90° Impact Wrench      | 7/16"      |              |                  |
| BAT20LWS | Replacement Socket for 90° Impact Wrench | 1 1/8"     | 3/4", 13/16" | 4                |

\*DeWALT® is a registered trademark of the Black & Decker corporation.



# IMPACT SOCKETS



## 2-in-1 Impact Socket Sets, 5-Piece

- Each Imperial and Metric set features 8 different sizes in 4 easy-to-carry sockets
- Consist of the most commonly used impact socket sizes in electrical and construction work
- Single-ended impact sockets with hands free adjustment between sizes
- Deep socket with 1/2" drive works great for hardware installation and removal
- Engineered for use with impact drivers
- Includes 1/4" hex by 1/2" hex square adapter
- Case for storage
- Replacement sockets available (sold separately)



66050E  
METRIC

| Cat. No.                        | Socket Sizes  | Points | Includes   |
|---------------------------------|---|--------|--|
| 66040                           | 7/8 x 11/16", 3/4 x 9/16"<br>5/8 x 7/16" and 1/2 x 3/8" | 12     | 1/4" Hex by 1/2" Hex<br>Square Adapter<br>Case for Storage |
| 66050E                          | 32 x 27 mm, 30 x 22 mm,<br>24 x 19 mm, and 17 x 13 mm   |        |  |
| Replacement Sockets and Adapter |   |        |  |
| 66041                           | Adapter   | —      |  |
| 66011                           | 1/2 x 3/8"  | 12     |  |
| 66012                           | 5/8 x 7/16"   |        |  |
| 66001                           | 5/8 and 7/16"   |        |  |
| 66014                           | 7/8 and 11/16"  |        |  |
| 66051E                          | 17 x 13 mm  |        |  |
| 66052E                          | 24 x 19 mm  |        |  |
| 66053E                          | 30 x 22 mm  |        |  |
| 66054E                          | 32 x 27 mm  |        |  |



66040  
Imperial

## 2-in-1 Slotted Impact Socket

- Slot in the outer socket to tighten and loosen hot line clamp eye-bolts
- Alignment slot in inner socket
- Patent pending design
- Cross hole design to prevent unintentional separation of adapter and socket

| Cat. No. | Socket Size  | Points |
|----------|--------------|--------|
| 66031    | 3/4" x 9/16" | 12     |



66031





# GRIPS

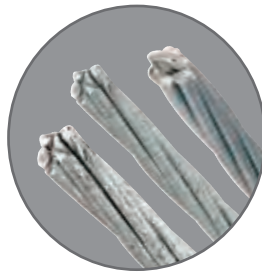


## Parallel Jaw Grip 4500 Series for Guy Strand, EHS, Coated Cable

- Versatile grip holds a wider range of Guy Strand, EHS and coated cable sizes reducing the number of grips needed
- Round jaw holds 0.18" to 0.60" (4.57 to 15.20 mm) diameter cable range
- Spring closes grip on cable to hold the initial position
- Sawtooth jaw profile resists build-up from galvanized coating on guy strand and EHS cables
- Spring-loaded for easy one-handed operation
- Large opening in the handle accommodates a wide variety of hooks on hoists, winches and tackle blocks
- Max Safe Load of 5,000 lbs (2,268 kg)



Sawtooth jaw profile resists build-up



Guy Strand, EHS and coated cable sizes



KT45005C

| Cat. No. | Body Style | Nominal Guy Strand Sizes        | Spring | Locking Handle | Jaw Length   |
|----------|------------|---------------------------------|--------|----------------|--------------|
| KT45005C | Parallel   | 0.18" to 0.6" (4.57 to 15.2 mm) | Y      | -              | 4" (10.2 cm) |

## Wire Pulling Grips Warnings

**⚠WARNING:** Grips are to be used for temporary installation, not for permanent anchorage.

**⚠WARNING:** When used on/or near energized lines, ground, insulate, or isolate grip before pulling.

**⚠WARNING:** Do not exceed rated capacity.

**⚠WARNING:** Always match proper size and type of grip to application.

**⚠WARNING:** Before each use, clean jaw area and inspect grip for proper operation to avoid slippage.

# YOU PUT YOUR TRUST IN KLEIN PRODUCTS ON-THE-CLOCK, NOW TRUST THEM OFF-THE -CLOCK

Klein Tools has a variety of tools to make your customers forget about the stress of work and enjoy all that life has to offer.

98002BT Bottle Opener

98028 Leather Coasters, 6pk

98222 BBQ Tool Set

98288 Canvas Apron

98022 Key Chain



For a additional information on our promotional branded products, visit [www.kleintools.com/catalog/branded-collection](http://www.kleintools.com/catalog/branded-collection)

# BRANDED MERCHANDISING

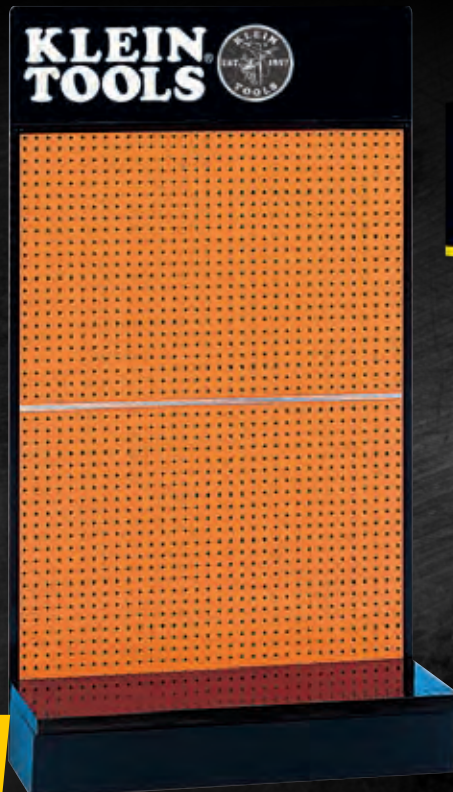
For a complete line of our branded merchandise visit [www.kleintools.com](http://www.kleintools.com)  
For a complete line of our branded *personalized* merchandise visit [www.kleintoolscanvas.com](http://www.kleintoolscanvas.com)



**PERSONALIZED**  
MERCHANDISE



# KLEIN TOOLS®



# VISUAL MERCHANDISING

For a complete line of our visual merchandising log in to [www.service.kleintools.com](http://www.service.kleintools.com).  
Visual merchandising is for distributors only.



# KLEIN<sup>®</sup> TOOLS



**For over 164 years**  
Klein Tools has been the  
brand professionals have  
**trusted to Power America!**

That trust is invaluable to us, and every day we strive to keep building on that trust. We work hard each day to produce tools to help you perform your job better and more efficiently.

We look to you for feedback, good or bad, to continuously improve our product offerings. And we make every effort to develop, design and manufacture these tools right here in the USA. Our commitment is always to you, the customer, and to continue as a US manufacturer of quality tools.

That's why we're the

**#1 choice**

of Professional  
Electricians  
in the USA

**GO MOBILE**

Sign up to receive text alerts about new products and chances to win **FREE** tools.

Go to [KleinTools.com](http://KleinTools.com) for more information.

**TRADESMAN  
CLUB** 

**Join the Tradesman Club**

at [www.kleintradesmanclub.com](http://www.kleintradesmanclub.com)  
for newest products, innovations  
and chances to win **FREE** tools



[www.kleintools.com](http://www.kleintools.com)

94843 © 2021 Klein Tools, Inc.