

# Rental Book

The right solution,  
whatever the application

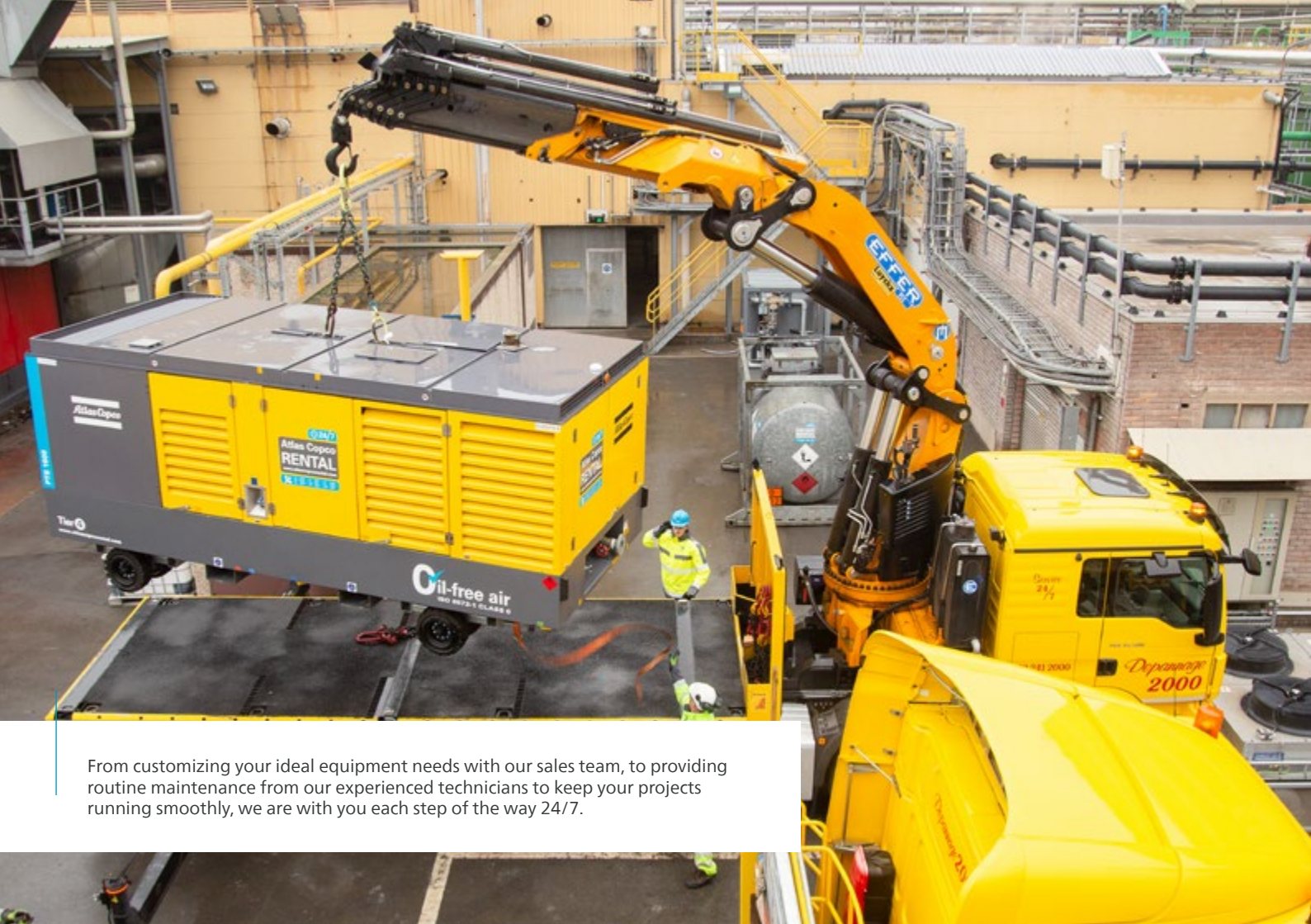


Atlas Copco



# Table of contents





From customizing your ideal equipment needs with our sales team, to providing routine maintenance from our experienced technicians to keep your projects running smoothly, we are with you each step of the way 24/7.



# We'll handle it

A planned maintenance to your compressor installation?

An urgent need for extra nitrogen?

A breakdown of your power supply?

Atlas Copco Rental is just one phone call away. **We engineer a solution** that is tailored to your specific requirements, whether you need **temporary air, power, nitrogen, steam**, or all of those at once. We handle emergency situations, but we can also help with **back-up** during a **planned maintenance** or **temporary projects**. With a service network that stretches to every corner of the continent, there is always local staff and fleet at hand to support you.



**Atlas Copco**  
**RENTAL**  
[www.atlascopcorental.com](http://www.atlascopcorental.com)



Our triple ISO certification allows us to give you the strictest quality, environmental, health and safety assurance.



# Triple certified

We go the extra mile to deliver more than just machines. Our organization, equipment and even service engineers are certified according to the most stringent norms in the industry. Atlas Copco Rental was among the first companies to be awarded **with triple certification by Lloyd's Register Quality Assurance.**



## High quality equipment and services ISO 9001

Quality applies to all our equipment and services. We want to get it right and on time, with state-of-the-art products and well-trained people.



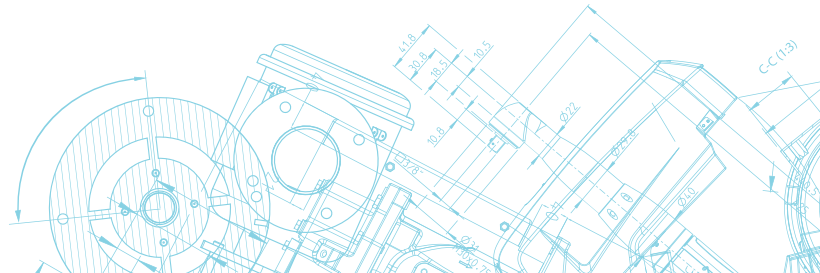
## Making sustainability work ISO 14001

Class Zero certified oil-free air compressors, responsible use of resources and energy-efficient equipment: we go to great lengths to keep our environmental footprint as low as possible.



## Caring about people OHSAS 18001

We focus on a safe and healthy working environment. Stringent safety measures for your staff and our own employees support our zero accident policy.





Wish your service came with a little more support? Our service technicians are trained to perform a speedy, effective installation of your temporary solution.



# Total solutions

We don't just provide machines, **we think along with you** and handle the project from start to finish, so you can focus on your core business. Our project engineers make sure you receive a made-to-measure solution and our service technicians can stay on site to keep your installation in excellent working order. From project design to decommissioning, you can count on us. **Every hour of the day or night**, in every corner of the world.

Logistical  
services

- Transport
- Import / export
- Certificates
- Loading guidelines



## Design of temporary installation

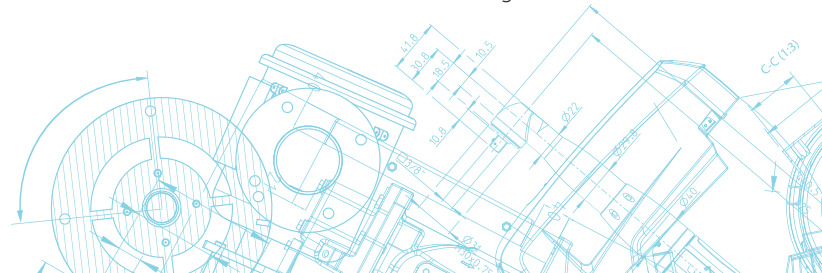
- Safety
- Technical feasibility
  - *Reliability*
  - *Air quality requirements*
- Energy efficiency
- Easy to install

## Energy management

- Fuel tanks
- Fuel supply on request
- Electrical transformers
- Distribution boards

## Services

- Installation
- 24/7 service
- Maintenance
- Supervision
- On-site operators
- Decommissioning



# Emergency projects

We hope you'll never encounter an emergency that puts your production at risk. But if you do, you can count on Atlas Copco Rental. We can call on our complete European network to build an installation that **takes your production over in no time**. Do you really want to err on the side of caution? Then we can also help **with a contingency plan for your factory**. This made-to-measure emergency plan allows us to have a back-up installation running at short notice.

## Handled with Air ▶

This project is the biggest we have ever done. When this large industrial company's compressed air installation failed, they called us. The demand was enormous: 250 000 m<sup>3</sup>/h of compressed air, around the clock support





# Planned projects

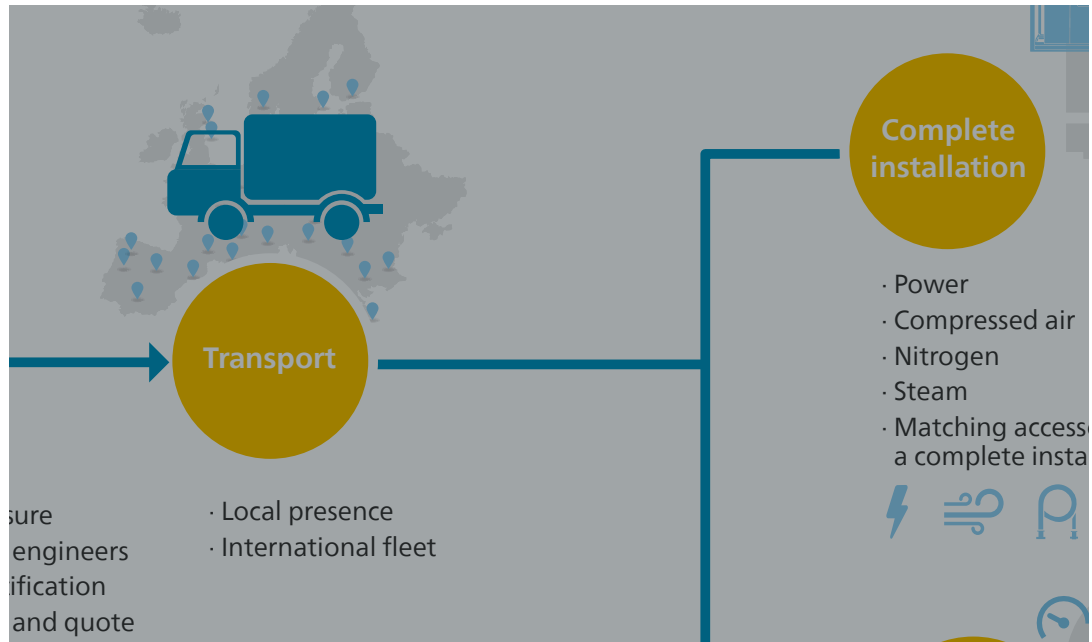
Is your periodical maintenance or turnaround project coming up? Atlas Copco Rental is ready to help out with a temporary installation that keeps your production going. Also your short-term production increases or events can be covered with a rental installation.

## **Nuclear dome pressure testing ►**

Nuclear power plants are among the most stringently tested structures on the continent. One of the periodical tests every nuclear reactor has to undergo is leak-testing of its dome by



# A typical rental project







# Oil-free air

Oil-free compressed air is what Atlas Copco does best and this is reflected in our fleet. Our oil-free compressors come in all shapes and sizes. Each one of them is suitable for the most critical applications and they are all ISO 8573-1 Class Zero certified by TÜV.

## **The benefits of 100% oil-free air**

- ✓ Absolutely no risk of oil contamination in your end product
- ✓ Reduced operating costs of compressed air
- ✓ No oil filters, so less intervention required





Emergency compressed air for breakdown  
and 24/7 service support, 250 000 m<sup>3</sup>/hour.

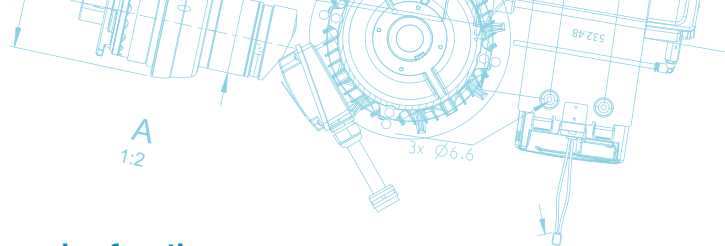
# The P-range

with the P of “purely rental”

This range of **oil-free equipment** has been designed and assembled especially for Atlas Copco Rental. These compressors are perfect for **outdoor use** and feature the **most efficient** oil-free screw element Atlas Copco could make.

Needless to say, the machines in the P-range are **our flagship** and have proven to be suitable for almost every application. That is because we have such a wide variety of them. The flexibility goes beyond the choice in machines: if your project requires a special application, we can also adapt them in our workshops, for example to deliver hot air at the outlet or to compress nitrogen.

- 100% oil-free air, ISO 8573-1 Class Zero certified
- Atlas Copco design
- Tailor-made for the rental market
- Adaptable for special applications such as hot air, nitrogen compression, etc.
- Extensive safety features
- Spillage-free frame



## Meet the family

**PTS 800** and **PTS 1600**: diesel-driven, 100% oil-free and medium pressure compressors. Both of them have the cleanest possible diesel engines under the bonnet (Stage IV emission standard) and run with AdBlue® to ensure a clean exhaust.

**PNS 1250**: diesel-driven, 100% oil-free and high pressure compressor. The PNS 1250 is also a Stage IV/Tier 4 machine, but this bigger brother handles pressures of up to 24 barg. Its natural habitat is high-risk conditions such as refineries and offshore platforms, which is why we have offshore-certified versions. But any other high-pressure application can also benefit from this oil-free workhorse.

**PTE 1500**: electric-driven, oil-free, medium pressure compressor. Do you have an electric power supply on your site? Then simply plug in this electric variant to deliver 100% oil-free compressed air at a capacity comparable to that of the PTS 1600.

**Offshore variants**: most of the machines in the P-range also come in offshore variants, with different fuel, safety and logistics features.





Chemical tank inertization project. Power generator and an oil-free air compressor, powering a nitrogen generator (300 Nm<sup>3</sup>/h at a purity of 98%).

# Diesel-driven

## Medium Pressure

	Max working pressure	Max capacity	Sound pressure level @7m	Dimensions	Weight wet	Capacity of fuel tank	Capacity of AdBlue® tank
	barg	FAD (m³/min)	dB(A)	l x w x h (mm)	kg	L	L
PTS 800	10,3	22,5	72	4010 x 2030 x 2400	4990	400	40
PTS 1600	10,3	45,7	86	5240 x 2210 x 2350	8565	600	255

### Main product features

- Stage IV / Tier 4 emission standard with on-board AdBlue tank
- Integrated aftercooler
- External fuel connections
- Auto start
- Remote monitoring
- Remote operation
- Optional: hot air outlet

### Safety features

- Spillage-free frame
- Spark arrestor
- Overspeed shutdown valve



# Diesel-driven

## High Pressure

	Max working pressure	Max capacity	Sound pressure level @7m	Dimensions	Weight wet	Capacity of fuel tank	Capacity of AdBlue® tank
	barg	FAD (m³/min)	dB(A)	l x w x h (mm)	kg	L	L
<b>PNS 1250</b>	24	34,5	88	5240 x 2210 x 2350	8625	600	255

### Main product features

- Stage IV / Tier 4 emission standard with on-board AdBlue tank
- Integrated aftercooler
- External fuel connections
- Auto start
- Remote monitoring
- Remote operation
- Stand-by engine heaters 230V/2,5kW

### Safety features

- Spillage-free frame
- Spark arrestor
- Overspeed shutdown valve



# Electric-driven

## Medium Pressure

	Max working pressure	Max capacity	Power input	Sound pressure level @7m	Dimensions	Weight
	barg	FAD (m <sup>3</sup> /min)	kW	dB(A)	l x w x h (mm)	kg
PTE 1500	10,3	41,2	323	73	5240 x 2210 x 2350	7300

### Main product features

- Integrated aftercooler
- For outdoor use
- Auto start
- Remote monitoring
- Remote operation
- Optional: hot air outlet





# Electric-driven

## High Pressure (boosters)

	Max working pressure	Max capacity	Power input	Sound pressure level acc. to ISO2151	Dimensions	Weight
	barg	FAD (m <sup>3</sup> /min)	kW	dB(A)	l x w x h (mm)	kg
<b>DXT 85 VSD</b>	42	20,2	100	72	5200 x 2400 x 2500	10800
<b>DNS 160 VSD</b>	45	37,9	170	72	6060 x 2440 x 2590	23500
<b>HNX 210 VSD</b>	71	41	210	68	11500 x 2550* x 4000	29800

### Main product features

- Variable Speed Drive technology
- Low starting current



\*Width in operation (saftey trailer): 4.220 mm

# Electric-driven

## Medium Pressure

	Max working pressure	Max capacity	Power input	Sound pressure level @1m	Dimensions	Weight
	barg	FAD (m³/min)	kW	dB(A)	l x w x h (mm)	kg
ZT 22 VSD FF	2,8 - 10	2,23 - 15,32	30,7	69	2960 x 1320 x 2100	2000
ZT 37 VSD FF			50	69	3300 x 2000 x 2300	2800
ZT 55 VSD FF			74,1	70	3310 x 1960 x 2400	2900
ZT 75 VSD FF		7,4 - 48,5	102,8	76	3740 x 2117 x 2450	4100
ZT 90 VSD FF			122,2	76	3740 x 2117 x 2450	4300
ZT 160 VSD FF			181,6	76	4900 x 2300 x 2500	7540
ZT 250 VSD FF			303	78	5880 x 2270 x 2500	10380
ZT 315 VSD FF	6 - 10	187	345	78	5880 x 2270 x 2500	10420
ZH 10000*			1200	72	2x(6060 x 2440 x 2590)	23000

### Main product features

- Lifting frame or container
- Low noise levels
- Variable Speed Drive technology (Excl. ZH)
- Full Feature (FF): incl. integrated dryer

\* ZH 10000 and its starter delivered in two containers.



# Electric-driven

## Low Pressure

	Max working pressure	Max capacity	Power input	Sound pressure level @1m	Dimensions	Weight
	barg	FAD (m <sup>3</sup> /min)	kW	dB(A)	l x w x h (mm)	kg
ZS 75+ VSD	1,2	38,8	86	77	3090 x 1520 x 2250	2300
ZS 160 VSD	1,2	76,3	180	79	4000 x 2090 x 2400	5800
ZE 4 VSD *	4	46,4	236	81	4240 x 2290 x 2500	7500

### Main product features

- Variable Speed Drive Regulation
- Possibility for external speed control (4-20 mA signal)



\* Integrated aftercooler, available as skid or container

# Oil-lubricated air

Atlas Copco Rental supplies the most energy-efficient type of oil-lubricated compressors available on the market. They come in **electric-driven** or **diesel-driven** variants, high, low and medium pressure and different flows. Just like all our other equipment, they are built to last and keep running smoothly even in the most demanding environments.

- ✓ Energy-efficient
- ✓ Compact and versatile
- ✓ Suitable for harsh conditions





High-pressure compressor rented for geothermal well drilling to drill 7.2 kilometers of 500–600-meter deep wells. By using a DrillAir Y35 compressor, daily drilling depths could reach 500 meters.

# Diesel-driven

## Medium Pressure

	Max working pressure	Max capacity	Sound pressure level @7m	Dimensions	Weight wet	Capacity of fuel tank
	barg	FAD (m³/min)	dB(A)	l x w x h (mm)	kg	L
XAS 97	7	5,3	70	(3496/3664) x 1410 x 1258	940	80
XAS 186		10,9	71	4250 x 1710 x 1770	1900	175
XAHS 186		10,1	71	4250 x 1710 x 1770	1900	175
XAHS 237	12	13,7	71	5150 x 1990 x 2040	3150	250
XAHS 447		26,0	72	4960 x 2100 x 2520	6680	850
XAH 1066 TwinAir		61,3	82	6060 x 2440 x 2590	14500	1600
XAVS 186*	14	10,6	71	4940 x 1810 x 1800	2340	168
XAVS 448*		26,3	72	4930 x 2130 x 2450	5660	600
XAHS237 T4	13,5	14,1	72	5488 x 1987 x 2024	3150	280
XAMS287 T4	11,8	17,22	72	5488 x 1987 x 2024	3150	280

### Main product features

- External fuel connections
- Spark arrestor
- Spillage-free frame
- Integrated aftercooler



\* Flexible pressure range, incl. AdBlue® tank: 70l

# Diesel-driven

## High Pressure

	Max working pressure	Max capacity	Sound pressure level @7m	Dimensions	Weight wet	Capacity of fuel tank
	barg	FAD (m <sup>3</sup> /min)	dB(A)	l x w x h (mm)	kg	L
<b>H23*</b>	20	23,5	72	4930x2130x2450	5660	600
<b>XRVS 476</b>	25	26,2	76	4960x2100x2520	7180	850
<b>Y35*</b>		39,0	79	4980 x 2240 x 2515	7690	750
<b>B18TT-62-3000</b>	100 (Single stage)	121 (Single stage)	116 - 110**	6060 x 2440 x 2590	14000	550
	207 (Dual Stage)	86 (Dual stage)				

### Main product features

- Integrated aftercooler
- External fuel connections
- Easy setting and control of flow and pressure,

### Safety features

- Spillage-free frame
- Spark arrestor
- Overspeed shutdown valve



\* Flexible pressure range, incl. AdBlue® tank: 70l

\*\* with silencing container

# Electric-driven

## Medium Pressure

	Max working pressure	Max capacity	Sound pressure level @7m	Dimensions	Weight
GA	barg	FAD (m <sup>3</sup> /min)	dB(A)	l x w x h (mm)	kg
GA 37 VSD+ FF	4 to 12,75	7,9	67	1850 x 1050 x 1980	900
GA 55 VSD+ FF		11,3	67	2535 x 1850 x 2400	2310
GA 75 VSD+ FF		16,1	73	2535 x 1850 x 2400	2310
GA 110 VSD FF	6 to 9,8	23,3	69	4570 x 2490 x 2480	6230
GA 160 VSD FF		33,7	71	4570 x 2490 x 2480	6230
E-Air	barg	FAD (m <sup>3</sup> /min)	dB(A)	l x w x h (mm)	kg
E-AIR T900	4 - 10,4	25,6	68	3380 x 1190 x 1665	3160

### Main product features

- Integrated filters
- Integrated dryer (not on E-AIR T900)
- Variable Speed Drive Technology (on GA)







High-pressure air compressors producing 240 m<sup>3</sup>/minute of compressed air for the drilling of bridge pier piles in Finland. This high amount of air enabled more drilled meters with lower overall costs per meter.

# Air Treatment

## **Complete your set-up with a matching dryer**

More than likely, your application requires dry compressed air to ensure your tools keep working and your end process remains free from contamination. To effectively remove moisture from the compressed air, we recommend using one of our dryers. **Our dryers come in various technologies**, depending on your application and the ambient conditions on-site.

### **The benefits of compressed air dryers**

- ✓ Reliable technology
- ✓ A matching dryer for every possible installation
- ✓ Pressure dew point down to -40°C



# Compressed air dryers

## ✓ Zero purge adsorption dryers (BDE):

- Pressure dew point down to  $-40^{\circ}\text{C}$
- Pressure range: 7-16 barg
- Energy-efficient, no process air is used
- Electric controller

## ✓ Adsorption dryers (CD-range):

- Pressure dew point down to  $-40^{\circ}\text{C}$  (optional down to  $-70^{\circ}\text{C}$ )
- Pressure range: 6-25 barg
- Suitable for demanding applications
- Pneumatic or electric controller
- Versatile and suitable for high pressures

## ✓ Refrigerant dryers (FD-range):

- Pressure dew point:  $3^{\circ}\text{C}$
- Pressure range: 4-14 barg
- Energy-efficient, compact and reliable



Installation of 14 compressors with matching accessories for a production upgrade project in a power plant.

# Compressed air dryers

	Technology	Pressure dew point	Pressure range	Average inlet flow
Adsorption dryers		°C	barg	m <sup>3</sup> /min
CD Medium Pressure	Heatless desiccant	-40	6 - 16	6 - 48
CD High Pressure	Heatless desiccant	-40	10 - 40	30 - 68
BDE	Zero purge desiccant	-40*	7 - 16	47
Refrigerant dryers		°C	barg	m <sup>3</sup> /min
FD	Electrical dryer	3	4 - 14	7-50

Air consumption required for regeneration of the towers is highly dependent on operating conditions and will affect total air flow at dryer outlet. Ask your Atlas Copco contact for a calculation of the required dryer size for your application.



\* optional down to -70°C



# Nitrogen

In a lot of industries, nitrogen is as vital a utility as compressed air or power. Our **Pressure Swing Adsorption** and **Membrane nitrogen generators** deliver a reliable, autonomous supply of on-site nitrogen. All these generators need is a source of clean, dry compressed air. Looking for just one, streamlined and compact set-up? Our nitrogen generators integrate perfectly with our compressor installations.

- ✓ Purity levels between 92% and 99,99%
- ✓ Stand-alone or in an installation with a compressor
- ✓ Containerized and offshore versions available



Pipeline inerting,  
nitrogen at 9 barg

# Membrane nitrogen generators

## Medium Pressure

	Nitrogen output (at 95% purity, 9 bar, 20°C ambient and 60% RH)	Air inlet pressure	Dimensions	Weight
	m <sup>3</sup> /h	barg	l x w x h (mm)	kg
NGM 280	280	4 - 13	1120 x 1650 x 2388	1179
NGM 1000*	840	4 - 13	6100 x 2440 x 2590	6910
NGM 1100	1100	4 - 13	3050 x 2440 x 2590	6910

### Main product features

- CE certified lifting frame
- Elektronikon® controller
- Recommended air quality\*: Class 0



\* 3 x NGM 280 in a 20ft. container

# Membrane nitrogen generators

## High Pressure

	Nitrogen output (at 95% purity, 24 bar, 20°C ambient and 60% RH)	Air inlet pressure	Dimensions	Weight
	cfm	barg	l x w x h (mm)	kg
NGM 2000	2000	16 - 24	6058 x 2438 x 2591	16500

### Main product features

- 20ft. DNV 2.7-1 container certified lifting frame



# Power

We power your projects with **plug-and-play** diesel generators of the latest generation. Every power unit comes complete with all the necessary accessories to build a safe installation and thanks to their advanced controlled and monitoring software, no application is too challenging.

- ✓ Local, remote and automatic starting capacity
- ✓ Island or parallel set-ups possible
- ✓ Offshore units available





43 generators and 18 500m of electric cables, delivering almost 10 000 kVA for a rock festival in Portugal.

# Power

	Prime power @ 400V, 50Hz	Sound pressure level	Dimensions	Weight wet	Capacity of fuel tank
	kVA	dB(A)	l x w x h (mm)	kg	L
<b>QAS 150</b>	150	69	3380 x 1200 x 1700	2610	313
<b>QAS 250</b>	250	69	3700 x 1200 x 1800	3400	477
<b>QAS 325</b>	325	69	4000 x 1400 x 2000	4735	603
<b>QAS 400</b>	400	70	4000 x 1400 x 2000	5035	640
<b>QAS 500</b>	500	71	4800 x 1550 x 2300	6445	905
<b>QAS 630</b>	630	71	4800 x 1550 x 2300	6830	911
<b>QAC 1250</b>	1250	71	6060 x 2440 x 2590	16500	1610
<b>QAC 1450 TwinPower</b>	1446	71	6060 x 2440 x 2590	16500	1610





The QAC 1450 TwinPower™ is a 20-foot containerized generator with 2 x 725 kVA generators inside, making it perfect for applications that have variable power needs. Two generators in one brings the flexibility to run at 100% power load or even low power loads in the most efficient way.

# Steam

Keep your production running full throttle with a temporary steam installation. Our **robust** industrial steam boilers are delivered ready to use, with all necessary accessories for a safe installation and fast start-up. All of them are “dual fuel”, which means they can be powered by either light fuel oil or natural gas. The smaller units come in 20ft. containers for easy transportation and all of them are suitable for even the roughest conditions. These **reliable** industrial workhorses are ideal for applications such as distillation, cleaning, heating and various processes in the food industry.

## **The benefits of our steam solutions include**

- ✓ Highest fuel-to-steam efficiency in the market
- ✓ Dual fuel (natural gas or light fuel oil)
- ✓ Designed for easy transportation and fast set-up
- ✓ Delivered with all accessories for a complete installation





Steam application in metallurgy. Set-up of four 12 t/h and two 16 t/h steam boilers, complete with accessories such as hot wells, steam manifold and silencer.

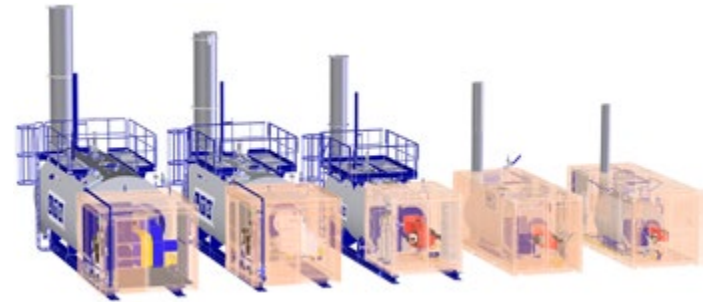


# Steam

	Max. capacity (feedwater at 103°C)	Maximum working pressure	Electrical requirements (approx.)	Transport dimensions	Empty weight
	Lb/h	bar/psig	kW	l x w x h (mm)	kg/lb
<b>1300 kg/h</b>	3000	14 / 203	5	6000 x 2500 x 2600	8000 / 17637
<b>3000 kg/h</b>	7000	14 / 203	15	6800 x 2500 x 2600	12000 / 26455
<b>6000 kg/h</b>	14000	25 / 363	30	9300 x 2500 x 2900	23000 / 50706
<b>12000 kg/h</b>	27000	25 / 363	60	10700 x 3000 x 3400	36000 / 79366
<b>16000 kg/h</b>	35000	22 / 319	70	11500 x 3200 x 3650	43000 / 94799

## Main product features

- Always delivered complete with PLC, burner and feedwater pumps
- Up to 72 hours of unsupervised operation
- Up to 6 t/h: no special convoy required for transport





Temporary installation to bridge routine boiler maintenance at Equinor Refinery Denmark A/S. 16 000 kg/h Steam Boiler with super-heated water boiler to bring up the temperature to +225C° at 18 bar.

# Offshore

With over 50 years of experience in offshore projects, Atlas Copco Rental knows the ropes. Whatever stage your project is in, we have a temporary solution to match. With DNV-certified crash frames, corrosion resistant paint and components, our offshore equipment is built for the rigors of rough sea. Of course both man and machine are **certified** according to all the relevant norms and standards in the industry. Our equipment has advanced features on board to ensure **safety and easy transportation**. Our dedicated service technicians are all trained and certified to work in even the most hazardous environments.

- ✓ Installations with low noise and small footprint
- ✓ CE compliant equipment, DNV approved containers, certified lifting frames and slings
- ✓ Dedicated compressors and boosters for the drilling market
- ✓ Advanced features for optimal safety, cost efficiency and reliability



Oil-free compressed air for bubble curtains in the North Sea. Bubble curtains protect marine life against noise and vibrations during the build-up of wind turbines. 13 compressors type PTS 1600 delivered 100% oil-free air for the project.



# Oil-free air Diesel-driven

## Medium Pressure

	Max working pressure	Max capacity	Sound pressure level	Dimensions	Weight wet	Capacity of fuel tank
	barg	FAD (m <sup>3</sup> /min)	dB(A)*	l x w x h (mm)	kg	L
<b>PTS 916 T3</b>	10,3	45,7	76	6060 x 2440 x 2590	11800	900

### Main product features

- DNV 2.7-1 container certified lifting frame
- Spillage-free frame
- Spark arrestor
- Optional: hot air inlet
- External fuel connection
- Auto start
- Engine overspeed protection



\* Acc. to EPA with a tolerance of +/-3dBA under free field conditions at 7m distance



# Oil-free air Diesel-driven

## High Pressure

	Max working pressure	Max capacity	Sound pressure level	Dimensions	Weight wet	Capacity of fuel tank
	barg	FAD (m <sup>3</sup> /min)	dB(A)*	l x w x h (mm)	kg	L
<b>PNS 1250 T3</b>	24	34,5	88	6060 x 2440 x 2590	12000	900

### Main product features

- DNV 2.7-1 container certified lifting frame
- Spark arrestor
- External fuel connection
- Auto start
- Engine overspeed protection



\* Acc. to EPA with a tolerance of +/-3dBA under free field conditions at 7m distance

# Oil-free air Electric-driven

## Medium Pressure

	Max working pressure	Max capacity	Power input	Sound pressure level	Dimensions	Weight
	barg	FAD (m <sup>3</sup> /min)	kW	dB(A)*	l x w x h (mm)	kg
PTE 1500	9,3	41,2	323	73	6060 x 2440 x 2590	12850

### Main product features

- DNV 2.7-1 container certified lifting frame
- Integrated aftercooler
- Optional: hot air outlet
- Auto start



\* Acc. to EPA with a tolerance of +/-3dBA under free field conditions at 7m distance

# Oil-lubricated air Diesel-driven

## Medium Pressure

	Max working pressure	Max capacity	Sound pressure level (Lp) acc. to ISO2151 @7m	Dimensions	Weight wet	Capacity of fuel tank
	barg	FAD (m³/min)	dB(A)	l x w x h (mm)	kg	L
<b>XATS 1600 Zone 2</b>	10,3	45,3	86	6060 x 2440 x 2590	1400	1019
<b>XAHS 237</b>	12	13,7	71	3770 x 1900 x 2390	3950	250
<b>XAHS 447</b>		26	72	4525 x 2440 x 2590	10800	796
<b>XAH 1066 TwinAir</b>		61,3	82	6060 x 2440 x 2590	14500	1600

### Main product features

- DNV 2.7-1 container certified lifting frame
- Spillage-free frame
- Integrated aftercooler
- External fuel connections
- Spark arrestor
- Emergency and safety features



# Oil-lubricated air Diesel-driven

## High Pressure

	Max working pressure	Max capacity	Sound pressure level (Lp) acc. to ISO2151 @7m	Dimensions	Weight wet	Capacity of fuel tank
	barg	FAD (m <sup>3</sup> /min)	dB(A)	l x w x h (mm)	kg	L
<b>XRV 946 Twinair</b>	25	54,0	82	6060 x 2440 x 2590	15000	1600
<b>Y35 offshore</b>	35	39,0	79	6060 x 2440 x 2590	11300	750
<b>B15-62/2175</b>	155	80,4	85	6060 x 2440 x 2590	12000	600
<b>B18TT-62-3000 – T2</b>	100 (Single Stage) 207 (Dual Stage)	127 (Single Stage) 91 (Dual Stage)	116	6060 x 2440 x 2590	14000	550

### Main product features

- DNV 2.7-1 container certified lifting frame
- Spillage-free frame
- External fuel connections
- Spark arrestor
- Spillage free



# Nitrogen generator

## High Pressure

	Nitrogen output (at 95% purity, 9,4 bar, 20°C ambient and 60% RH)	Air inlet pressure	Dimensions	Weight
	cfm	barg	l x w x h (mm)	kg
NGM 2000 HP	2000	16 - 24	6060 x 2440 x 2590	16500
NGM 3000	3000	16-35	6060 x 2440 x2590	13640

### Main product features

- DNV 2.7-1 container certified lifting frame
- Efficiency control system
- Integrated air pre-treatment
- Intergrated N<sub>2</sub> flow meter, oxygen analyser and low purity alarm signal





# Power Diesel generators

	Prime power	Sound pressure level	Dimensions	Weight wet	Capacity of fuel tank
	kVA	LWA*	l x w x h (mm)	kg	L
QAS 100	100	64	3760 x 1900 x 2250	3205	250
QAS 250	250	69	3760 x 1900 x 2250	5030	469
QAS 400	400	70	4520 x 2440 x 2590	8680	640
QAS 500	500	71	6060 x 2440 x 2900	8500	905
QAS 630	630	70	6060 x 2440 x 2900	9530	911
QAC 1250	1250	71	6060 x 2440 x 2590	16500	1610
QAC 1450 TwinPower	1446	71	6060 x 2440 x 2590	16500	1610

## Main product features

- 15ft. or 20ft. DNV 2.7-1 container certified lifting frame
- Spark arrestor
- Overspeed shutdown valve
- Local / Remote / Automatic start capacity
- External fuel tank connection



\* Acc. to EPA with a tolerance of +/-3dBA under free field conditions at 7m distance, 50 hZ

# Steam boiler Diesel-driven

	Max working pressure	Steam per hour	Dimensions	Weight wet	Capacity of fuel tank
	barg	kg	l x w x h (mm)	kg	L
6.2 MBTU	10,35	2720	6060 x 2440 x 2590	12500	1000

## Main product features

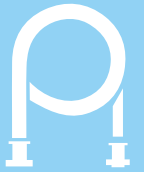
- 20ft. DNV 2.7-1 container certified lifting frame
- Safe Area Use
- Sound attenuated enclosure
- Exhaust gas spark arrestor



# Accessories

Accessories are more than just details, they make sure your installation keeps running smoothly and is delivering what your application needs. Every piece of accessory is tested, certified and approved for a safe installation and they all exactly match the other equipment in our fleet. **Don't worry about finding the right accessories for your project, we do that for you.** Every set-up we propose is a complete solution. We even have the right tools for complex projects such as hot or cold air applications, special power requirements, very hot or cold condition, etc.

- ✓ Matching accessories
- ✓ Tested and certified for a safe installation
- ✓ Solutions for complex set-ups



Leak testing of a nuclear dome, requiring stable, dry, 100% oil-free compressed air. A typical installation consists of power generators, 14 oil-free compressors and matching dryers and accessories.

# Accessories

## Fuel tanks

### Fuel tank - IBC

- Capacity: 2600/3000 l
- ADR: IBC
- Double skin
- Spillage-free frame

### Fuel tank - Tank container

- Capacity: 5500/7800/20.000 l
- ADR: Tank container
- Double skin
- Spillage-free frame



## AdBlue® tanks

- Capacity: 1000 l



## Air hoses

### Hoses - Medium flow (air/nitrogen/water)

- Hoses (DIN): DN 50 - DN 80
- Pressure range: 10/16/25/40/60 bar
- Length: 5/10/20 m
- Material: rubber/steel/airflat

### Hoses - Big flow (air)

- Flanged hoses: DN 150 - DN 200
- Pressure range: 10/16 bar
- Length: 5/12/15m
- Material: rubber/steel





# Accessories

## Collectors

### Manifolds for air hoses

- DIN Flanged size: DN 50 up to DN 200
- Sizes following pressures: 10/25/40/65 bar
- All hoses and manifolds are PED Certified
- Equipped with ball valves
- Certified



## Air receivers

- Capacity: 50 to 6000 liter
- Working pressure: 10/16/25/35 bar
- PED Certified
- Dedicated oil-free or oil-lubricated



## Transformers

### Auto Transformers 100 - 600 kVA

- Low voltage
- 230 / 400 / 525 / 690 V
- Outdoor installation (IP 21)
- Copper bar connection

### Transformers 1250 - 3150 kVA

- Mid voltage
- Primary: 400 V / 690 V  
Secondary: 5,4 up to 24 kV
- Mid voltage protection  
(optional: low voltage protection)
- Containerized



# Accessories

## Heat exchangers

### Cooling / heating compressed air

- Dimensions: 1000 x 1080 x 1260 mm
- Weight: 175 kg
- Water inlet & outlet: 1 x PN 16 DN 80 DIN 3"
- Air inlet & outlet: 1 x PN 16 DN 80 DIN 3"
- Cooling water flow: 3,20 l/s
- Discharged air temp.: Water temp. + 5°C
- Airside cooling surface: 13,4 m<sup>2</sup>
- Max - Min temp.: 90 - 0°C
- Waterside & airside max. pressure: 25 bar
- Capacity: air flow at 7 bar:  
1750 l/s - 105 m<sup>3</sup>/min
- With forklift slots



## Distribution panels

### Electrical accessories

- Range 32 A - 10 000 A
- Different set-ups
- Outdoor installation
- CE sockets, or sockets following local law



## Electrical cables

### Multicore cables

- Fitted with sockets/plugs
- (CE) 16A / 32A / 63A / 125 A
- Standard length 25 m

### Uniflair cables

- Cu cable (H07RNF) & Alu cables (PowerAmp)
- 400/750 V
- 70 / 120 / 150 / 240 mm<sup>2</sup>

### Connections for uniflair cables

- Connection boxes:  
5 x cables up to 120 mm<sup>2</sup> - 240 mm<sup>2</sup>
- Outdoor installation

# Accessories

## HiLight B5+ LED Light tower

- 50 Hz, 230 VAC, 2,7 kW
- Light coverage: 5000 m<sup>2</sup> (avg; 20 luxes)
- Lamp durability: 30 000 hours
- Fuel consumption: 0,5 l/h
- Hydraulic vertical mast, max 8 m
- Max wind speed: 80 km/h
- Dimensions: 1160 x 1160 x 2500 mm
- Weight: 980 kg



Emergency project at a refinery, demand of 125 000 m<sup>3</sup>/h, oil-free compressed air



To prevent the Dutch Rhine River from salinization, bubble curtains needed to be installed. Two 100% oil-free air compressors generated the air bubbles: a total air flow of 90-m<sup>3</sup>/min flow for more than 3 months.





Temporary back-up solution for HOFOR in Denmark: a fuel efficient 1250-kVA diesel generator (400V) connected with a 2500-kVA transformer that converts and supplies cranes with 10 kV voltage.

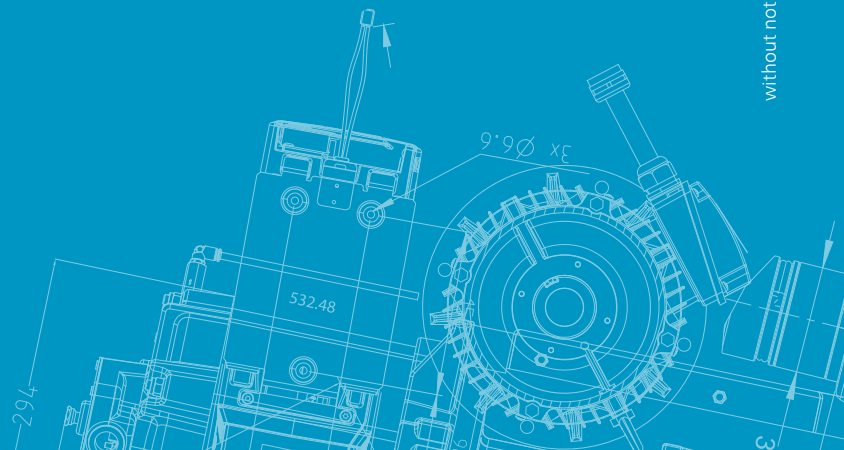




**Atlas Copco**

Atlas Copco Rental Europe nv  
Industrieweg 1F  
2850 Boom, Belgium  
+32 3 401 67 00  
specialty.rental@be.atlascopco.com

[www.atlascopcorental.com](http://www.atlascopcorental.com)



2956 5701 00 - April 2019 © Atlas Copco Rental Europe NV, Belgium.  
All rights reserved. Designs and specifications are subject to change  
without notice or obligation. Read all safety instructions in the manual before usage.