

INDUSTRY BROCHURE

Installation Products

Single and multi-family housing industry



Installation Products Division

- Wire and cable management
- Cable protection systems
- Boxes and fittings
- Connectivity and grounding
- Medium voltage

Thomas & Betts is now part of ABB's Installation Products Division, but our long legacy of quality products and innovation remains the same. From connectors that support wire buildings on Earth to cable ties that help put machines in space, we continue to work every day to make, market, design and sell products that provide a smarter, safer and more reliable flow of electricity, from source to socket.

Table of contents

004–005	Designed to perform
006–009	Product selection guide
010–011	Continuous operation and sustainability
012–013	Total project cost reduction
014–015	Grounding and bonding
016	Safety
017	Power quality, efficiency and reliability
018–019	Liquid ingress protection
020–021	Services and training
022	Installation Products for applications
023	Installation Products for industries

Designed to perform

Single and multi-family housing industry

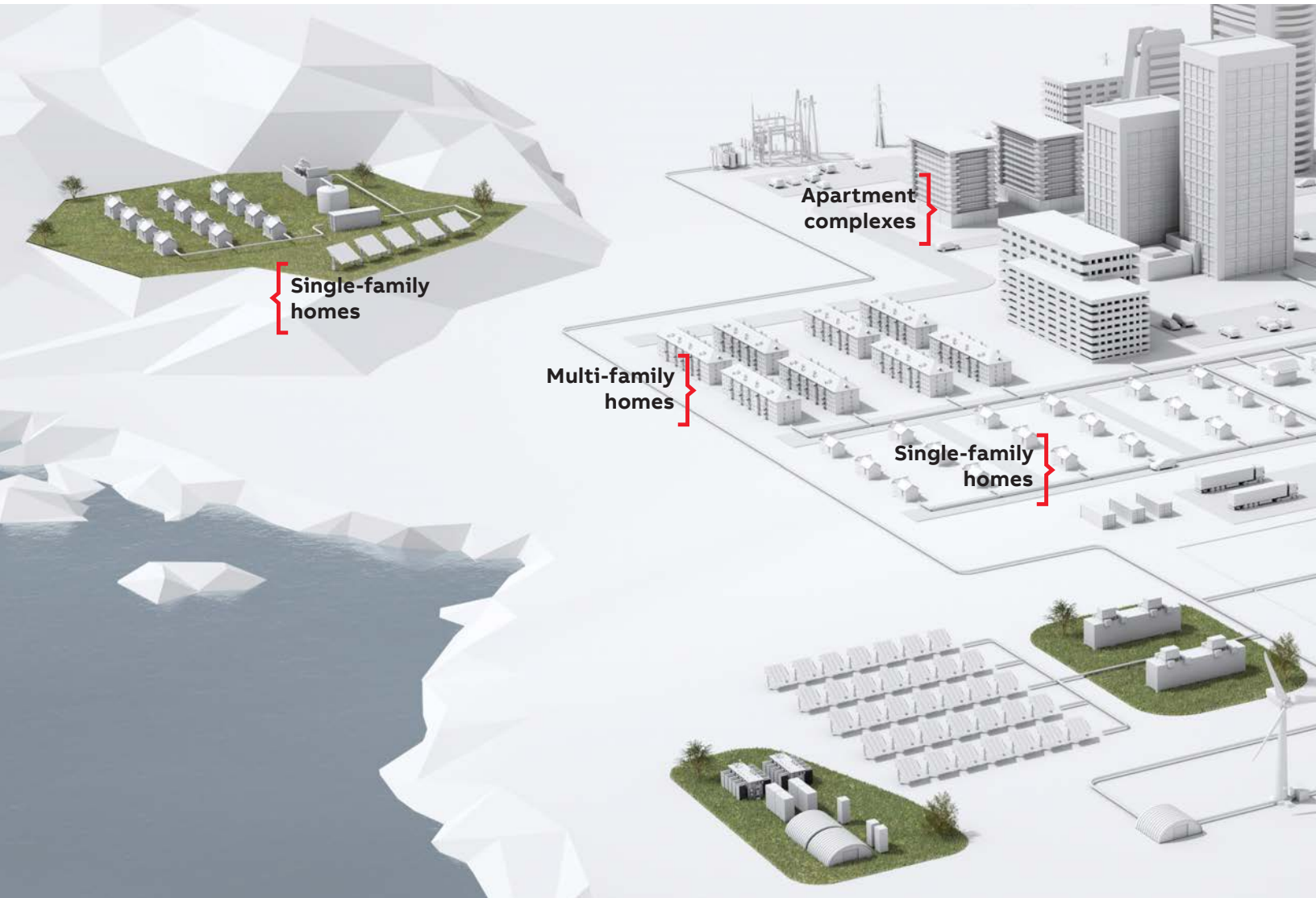
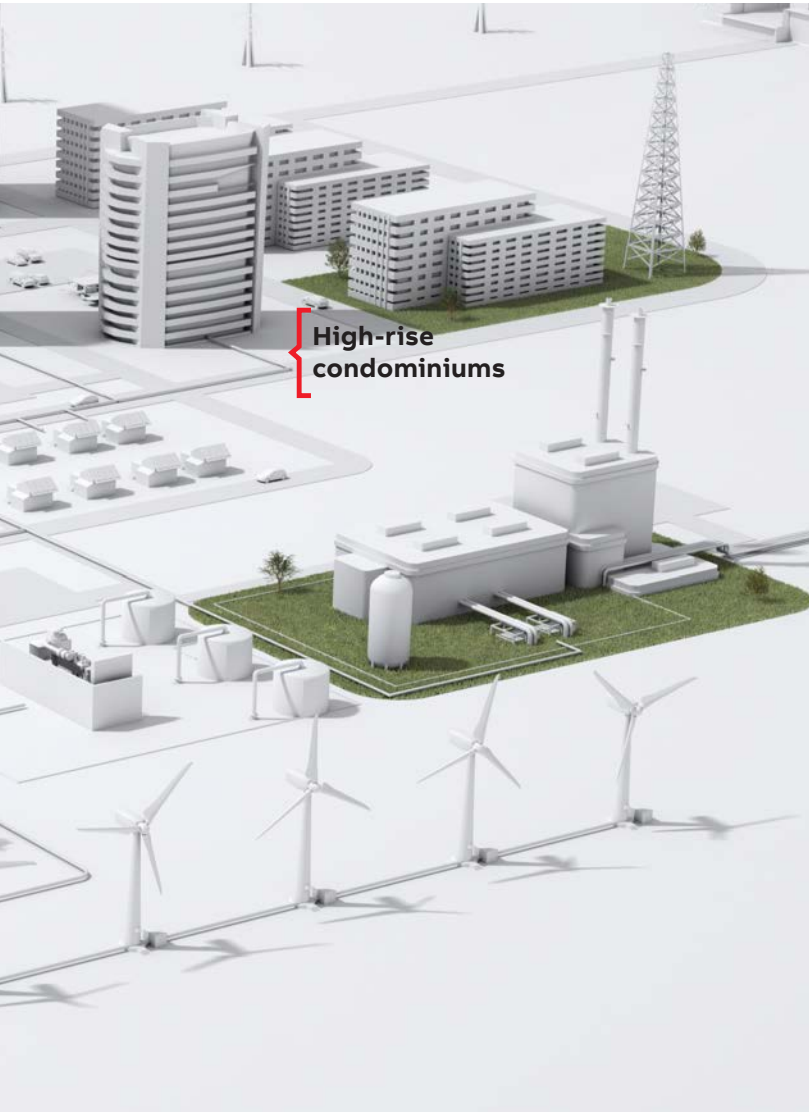


ABB understands the challenges faced in the single and multi-family housing industry and is committed to providing innovative electrical solutions that not only reduce overall project costs, but also increase safety, promote sustainability and even improve cash flow.



Installation Products

for the single and multi-family housing industry:



Continuous operation
& sustainability



Total project
cost reduction



Grounding & bonding



Safety



Power quality,
efficiency & reliability



Extreme temperature
protection



Liquid ingress
protection



Services & training

Whether it's labor-saving rough-in components, custom-designed electrical prefabrication systems, online cloud-based design tools or even our world-class logistics, ABB can help bring single and multi-family housing projects in on time, within budget and profitably.

Product selection guide

for the single and multi-family housing industry



Product selection guide

Product description	Continuous operation & sustainability	Total project cost reduction
Blackburn®		
Compression connectors	–	•
E-Z-Ground® compression, mechanical and exothermic grounding systems	–	•
Ergonomic compression tools	–	•
Online configurator	–	–
Carlon®		
Draft-tight boxes	•	•
PH solutions	•	•
Structured cabling	•	–
Residential floor boxes	•	–
Media boxes	•	–
Adjust-A-box solutions	–	•
Carflex® non-metallic liquidtight conduit and fittings	–	–
Recessed pop-up receptacles	–	–
PC solutions	–	–
Elastimold®		
Solid-dielectric switchgear	•	–
Separable connectors	•	–
Field application engineering	–	–
EZCODE®		
Danger/warning labels and signs, industrial/wire markers, barricade/burial tape	–	–
Kindorf®		
Modular metal framing system	–	•
Trapnut® strut fastener	–	•
Trap-Eze™ connector	–	•
Cobra® one-piece cable and pipe clamp	–	•
Fast set beam clamp	–	•
Ocal®		
Onsite installation certification training	–	–
Red-Dot®		
Code Keeper® weatherproof while-in-use covers	•	–
Weatherproof outdoor lighting	•	–

Product selection guide

for the single and multi-family housing industry



Product selection guide

Product description	Continuous operation & sustainability	Total project cost reduction
Steel City®		
High-capacity floor boxes	•	–
Prefabricated electrical rough-in solutions	–	•
Fire alarm boxes and accessories	–	•
Electrical rough-in components	–	•
EMT raintight fittings	–	–
eFab	–	–
T&B® Fittings		
Revolver® grounding fittings	–	–
Blackjack® grounding bushings	–	–
Stainless steel liquidtight conduit and cord fittings	–	–
Services & training		
Online CAD Library	–	–
Tool Leasing Program	–	–
Mobile Solutions Team	–	–
Onsite NEC® Update Training	–	–
Onsite Grounding and Bonding Training	–	–

Continuous operation & sustainability

Technology and regulatory evolution are driving change throughout single- and multi-family homes.

01 Carlon®

- Draft-tight boxes.
- Structured cabling.
- Residential floor boxes.
- Media boxes.

02 Red-Dot®

- Code Keeper® weatherproof while-in-use covers,
- Weatherproof outdoor lighting.

03 Steel City®

- High-capacity floor boxes.

ABB focuses on providing innovative electrical solutions that are not only highly durable and maintain integrity over time, but are also flexible to efficiently accommodate future demands.

Carlon®

- **Reduce energy consumption**
 - Custom-designed assemblies of components can save over 50% on your in-wall rough-in installation costs
- **Sustainable design**
 - Power and Low-Voltage Structured Cabling System makes it easy to accommodate future wiring needs of advancing technology
 - Residential Floor Boxes offer high capacity and flexibility that can efficiently adapt to future needs
 - Stainless steel and brass Floor Box Covers provide superior durability and aesthetics
 - Media Boxes support current and future wiring needs for advancing flat screen technologies

Red-Dot® – Outdoor metallic power and lighting solutions

- Sustainable design in rugged, long-lasting, outdoor weatherproof electrical protection with corrosion-resistant die-cast aluminum construction
- Comply with most recent National Electrical Code® Extra-Duty requirements
- Permanent metal landscape lighting offers durability and adds value to the home

Steel City® – High-capacity floor boxes

- Durable, high-capacity, in-floor electrical solutions provide sustainability to meet current and future power and data wiring needs
- Save time by offering the highest quality BIM models for all in-floor electrical and low-voltage needs
- All-metal cover options, including stainless steel, aluminum and brass, resist damage and provide durability in high-traffic areas

Elastimold®

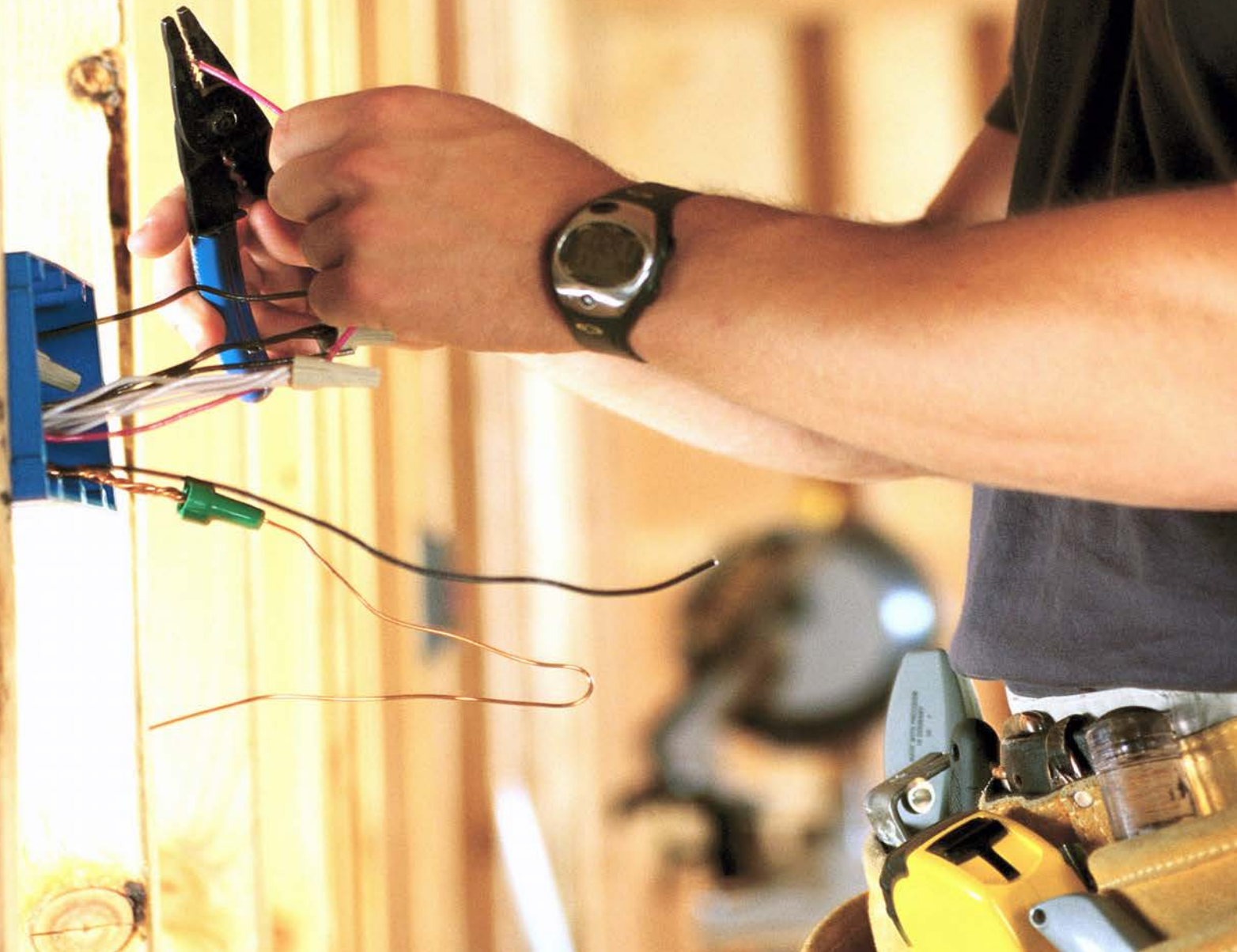
- Solid-dielectric switchgear
- Separable connectors





ABB provides sustainable electrical systems and components with features that meet technological needs, now and into the future.

—
ABB offers you superior logistics,
material handling and inventory savings.
Your order can be shipped palletized,
packaged and identified per floor,
per room or per location to reduce the
need for material sorting and handling, with
shipments delivered to your jobsite before
or on the day needed to minimize
inventory management.



Total project cost reduction

The residential market encompasses much more than the single-family home. Apartment complexes and high-rise condos have different needs than a 2,000-square-foot house. Large, repetitive areas, firewalls and steel stud construction are a few differences that lead to unique needs.

- 01 **Blackburn®**
- Compression connectors.
 - E-Z-Ground® compression, mechanical and exothermic grounding systems.
 - Ergonomic compression tools.

- 02 **Kindorf®**
- Modular metal framing system.
 - Trapnut® strut fastener.
 - Trap-Eze™ connector.
 - Cobra® one-piece cable and pipe clamp.
 - Fast set beam clamp.

- 03 **Steel City®**
- Prefabricated electrical rough-in solutions.
 - Fire alarm boxes and accessories.
 - Electrical rough-in components.

* NEC and National Electrical Code are registered trademarks of the National Fire Protection Association, Inc.

Labor becomes more significant, so improving efficiency plays a central role in lowering total project costs. ABB offers you solutions to help drive efficiency improvements, saving time, cutting labor costs and reducing overall project costs.

Steel City® – Prefabricated rough-in assemblies and labor-saving rough-in components

- **Labor savings** – Custom-designed assemblies of components can save over 50% on your in-wall rough-in installation costs
- **Material savings** – Special ARRA and Buy-America assemblies reduce overall material costs by up to 40%
- **Logistics savings** – Project-specific packaging, labeling and just-in-time direct deliveries the day needed cut material-handling and inventory costs
- **Reduced waste** – Pre-assembled, palletized components reduce onsite packaging and waste
- **Process improvements** – Steel City® Prefabricator lets you design, manage, quote and order your own in-wall rough-in electrical systems specific for your project

Blackburn® – Compression connectors, grounding systems and ergonomic compression tools

- Featuring the Color-Keyed® Compression System that ensures proper connections
- Design/quote/order custom lugs easily using the Online Configurator to meet the needs of any project – with guaranteed two-week shipment

- Fewer crimps yield superior terminations

Kindorf® – Modular metal framing system and accessories

- **Labor savings** – Unique punched framing channels and innovative hardware products cut installation time by over 40% over typical mechanical framing systems
- **Material and inventory savings** – Unique 1½" design requires fewer fittings, lowering jobsite inventory
- **Reduced Waste** – Integral and easy-to-use measuring system means exact cuts and less scrap
- **Sustainable finish** – Galv-Krom® trivalent finish offers more than double the corrosion resistance of pre-galvanized product and won't form white rust when stored outdoors

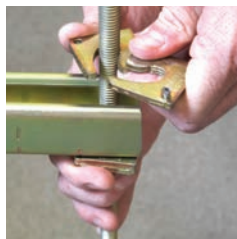
Carlton®

- **Draft-tight boxes**
 - Reduce energy consumption and eliminate the need for sealant and caulk on the building envelope
- **Adjust-A-Box® solutions**
 - Adjust to wall thickness for always-flush finish and reduce the need for extension "goof" rings
- **PH solutions**
 - Phenolic boxes eliminate expensive putty pads or mineral wool insulation in a 2-hour firewall
 - Install boxes in the same stud cavity facing opposite directions and eliminate the need for alternate construction



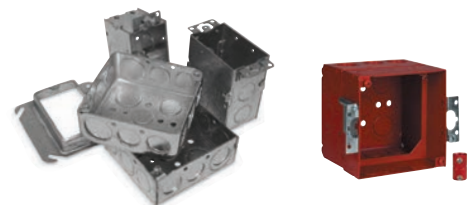
Blackburn®

01



Kindorf®

02



Steel City®

03

Grounding and bonding

ABB provides a wide range of grounding and bonding solutions to electrically connect all metallic non-current carrying items in a room or building as protection from electric shock.



01 **Blackburn®**
• E-Z-Ground®
compression, mechanical
and exothermic
grounding systems.

02 **T&B® Fittings**
• Revolver® grounding
fittings.
• Blackjack® grounding
bushings.

Blackburn® – Grounding systems

- Superior grounding and bonding of electrical systems and equipment
- E-Z-Ground® compression connectors
- Mechanical grounding connectors
- Exothermic welding system

T&B® Fittings

- **Revolver® grounding fittings**
 - Designed for use where an external bonding jumper is required for liquidtight flexible metal conduit
 - Revolver® grounding ring provides flexibility in positioning
 - Available in steel/malleable iron or aluminum
- **Blackjack® grounding bushings**
 - Superior ground continuity for rigid conduit and IMC
 - Use the same bushing on either threaded or threadless conduit
 - Innovative design makes installation faster and easier



01

Blackburn®

02

T&B® Fittings

—
In support of our commitment to safety, ABB representatives sit on National Electrical Code® panels and help drive industry-wide code changes that improve safety for both installers and building occupants.





Safety

Count on ABB for identification products and wire management solutions for every application area in all types of residential facilities.

01 EZCODE®

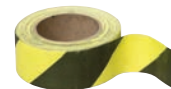
- Danger and warning labels and signs, industrial / wire markers, barricade and burial tapes.

EZCODE® – Safety labels, tags, signs and barricade tapes

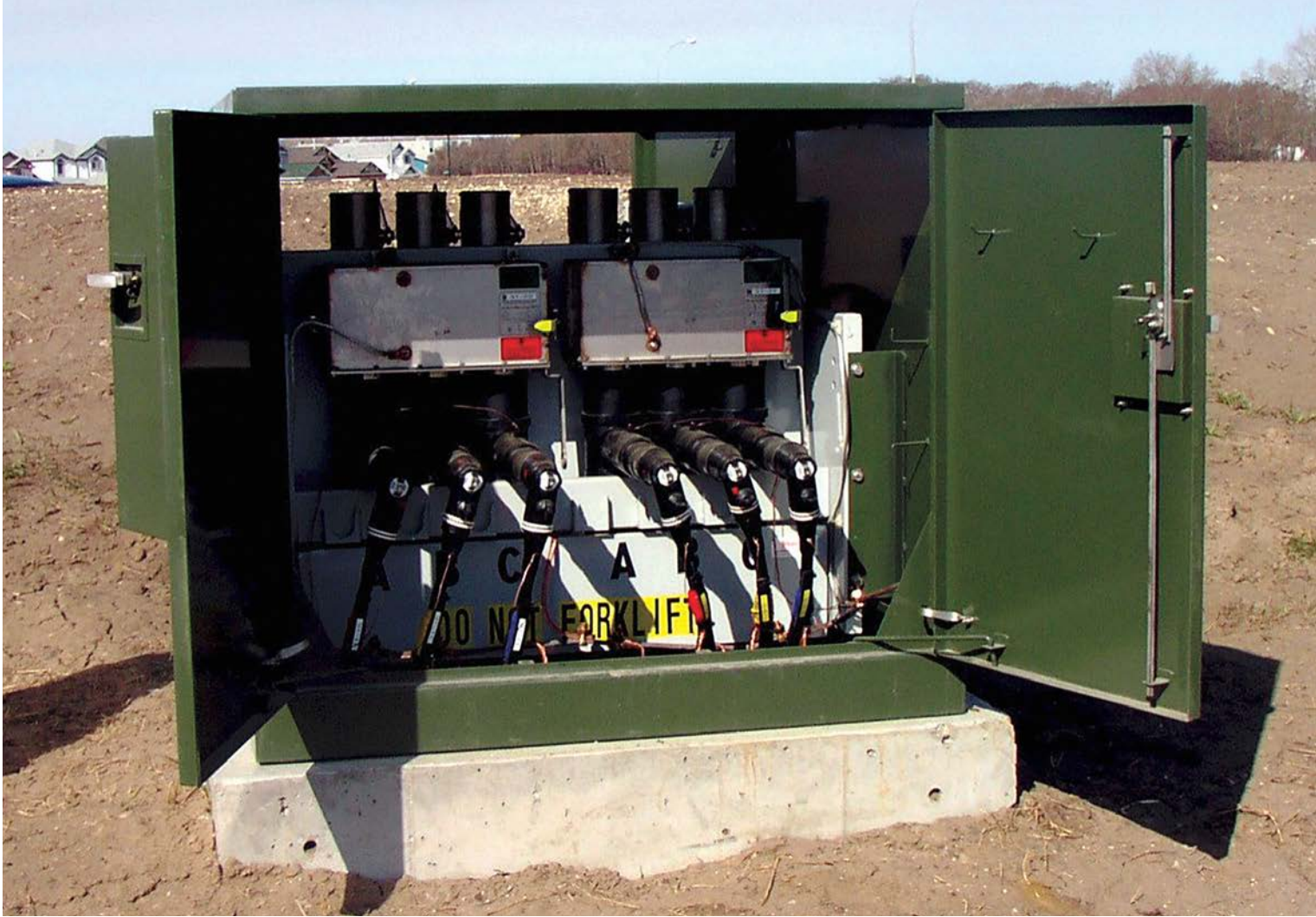
- Increase safety through proper, clear identification and hazard awareness

Carlton® – Recessed pop-up receptacles

- Eliminate the safety hazard of power cords plugged into side-mounted outlets



EZCODE®



Power quality, efficiency and reliability

ABB power solutions provide peace of mind that comes from knowing equipment is safe from the consequences of unpredictable power.

—
01 Elastimold®
• Solid-dielectric
switchgear.



Elastimold® - Solid dielectric switchgear

- Solid EPDM insulating media makes it maintenance-free and environmentally friendly - no oil, no gas
- Compact, modular, field-upgradable design enables smaller footprint and field assembly inside tight vaults or cabinets.

Liquid ingress protection

Outdoor weatherproof protection of electrical systems is more significant than ever. Investments in solar technology, new high-efficiency air-quality units and even outdoor living upgrades require significant updates in power and lighting to the exterior of a home.



01 **Carlon®**
• Carflex® non-metallic liquidtight conduit and fittings.

02 **Red-Dot®**
• Code Keeper® weather proof while-in-use covers.
• Weatherproof outdoor lighting.

03 **Steel City®**
• EMT raintight fittings.

04 **T&B® Fittings**
• Stainless steel liquidtight conduit and cord fittings.

*NEC and National Electrical Code are registered trademarks of the National Fire Protection Association, Inc.

ABB is committed to protecting electrical systems through durable, sustainable and innovative solutions.

T&B® Fittings – Stainless steel liquidtight conduit and cord fittings

- Stainless steel construction resists corrosion
- Rounded gland nut deflects water from connector
- Continuous sealing ring ensures a liquidtight seal

Carlon® – Carflex® non-metallic liquidtight conduit and enhances the value of the home and fittings

- Superior wire protection in harsh, damp and outdoor environments
- Conduit is lightweight for easy handling, non-conductive, non-corrosive and resistant to oil, acid, ozone and alkaline
- One-piece PVC fittings provide protection against water, oil and dust in indoor and outdoor locations – UL® Listed for use in wet locations

Red-Dot® – Weatherproof outdoor power and lighting solutions

- Rugged, long-lasting, outdoor-weatherproof electrical protection with corrosion-resistant, die-cast aluminum construction
- Comply with most recent National Electrical Code® “Extra Duty” requirements

Steel City® – EMT raintight fittings

- Ensure a quality UL® Listed raintight connection
- For sizes up to 1", there are no additional parts to potentially lose and require no disassembly to install



01 **Carlon®**



02 **red dot®**



03 **Steel City®**



04 **T&B® Fittings**

What NEMA/IP ratings are required to prevent liquid ingress into electrical systems in your projects?





ABB provides training for many of our products. We make sure that contractors understand how our versatile solutions will work with their electrical systems.

Services and training

ABB provides services and training in the field or classroom to help you maximize efficiency and eliminate wasted time and materials on the jobsite.

-
- 01 **Blackburn®**
 - Online configurator.
-
- 02 **Ocal®**
 - Onsite Installation certification training.
-
- 03 **T&B® Tools**
 - Tool service, loaner and leasing programs.

Our services

Blackburn®

- Online Configurator enables special connectors to be designed with a guaranteed two-week shipment

Joslyn Hi-Voltage® / Elastimold®

- Power & High Voltage Field Service group provides field maintenance for Joslyn Hi-Voltage® and Elastimold® equipment

Ocal®

- Onsite installation training provides a review and hands-on practice of clamping, cutting, threading, assembling and repairing the Ocal® PVC-coated conduit system
- Training also extends warranty from two to five years on a system installed by a certified contractor

Steel City®

- Online Prefabricator design tool provides drawings, DXF files, pricing and cataloging of custom-designed rough-in electrical support systems

Additional services & training

- Free online CAD Library for downloadable 2D and 3D models in more than 90 native CAD file formats
- NEC® Update Training provides an overview of the latest changes to the National Electrical Code®*
- Grounding & Bonding Training covers design, layout and connections
- Mobile Solutions Team
- Tool Leasing Programs
- Onsite NEC® Update Training
- Onsite Grounding and Bonding Training

—

* NEC and National Electrical Code are registered trademarks of the National Fire Protection Association, Inc.



Blackburn®

01



Ocal®

02



03

Installation Products for applications

- 01 Continuous operation and sustainability.
- 02 Corrosion and harsh environment protection.
- 03 Safety and contamination.
- 04 Emergency electrical solutions.
- 05 Total project cost reduction.
- 06 Liquid ingress protection.
- 07 Extreme temperature protection.
- 08 Grounding and bonding.
- 09 SKU Reduction.

ABB

APPLICATION BROCHURE
Installation Products
 Continuous operation and sustainability




② Installation Products Division
 • Wire and cable management
 • Cable protection systems
 • Buses and fittings
 • Connectivity and grounding
 • Medium voltage

01

ABB

APPLICATION BROCHURE
Installation Products
 Corrosion and harsh environment protection



② Installation Products Division
 • Wire and cable management
 • Cable protection systems
 • Buses and fittings
 • Connectivity and grounding
 • Medium voltage

02

ABB

APPLICATION BROCHURE
Installation Products
 Safety and contamination



② Installation Products Division
 • Wire and cable management
 • Cable protection systems
 • Buses and fittings
 • Connectivity and grounding
 • Medium voltage

03

ABB

APPLICATION BROCHURE
Installation Products
 Emergency electrical solutions




② Installation Products Division
 • Easy-clearing cable and cable protection for walk-down areas
 • Supporting and diverting power to temporary structures
 • Cable bundling/strapping and identification components
 • Temporary power systems

04

ABB

APPLICATION BROCHURE
Installation Products
 Total project cost reduction



② Installation Products Division
 • Wire and cable management
 • Cable protection systems
 • Buses and fittings
 • Connectivity and grounding
 • Medium voltage

05

ABB

APPLICATION BROCHURE
Installation Products
 Liquid ingress protection



② Installation Products Division
 • Wire and cable management
 • Cable protection systems
 • Buses and fittings
 • Connectivity and grounding
 • Medium voltage

06

ABB

APPLICATION BROCHURE
Installation Products
 Extreme temperature protection



② Installation Products Division
 • Wire and cable management
 • Cable protection systems
 • Buses and fittings
 • Connectivity and grounding
 • Medium voltage

07

ABB

APPLICATION BROCHURE
Installation Products
 Grounding and bonding



② Installation Products Division
 • Wire and cable management
 • Cable protection systems
 • Buses and fittings
 • Connectivity and grounding
 • Medium voltage

08

ABB

APPLICATION BROCHURE
Installation Products
 SKU Reduction



② Installation Products Division
 • Wire and cable management
 • Cable protection systems
 • Buses and fittings
 • Connectivity and grounding
 • Medium voltage

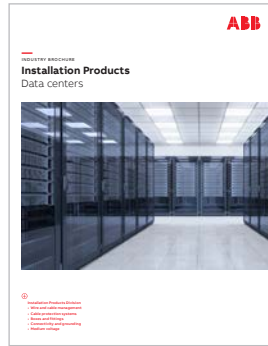
09

Installation Products for industries

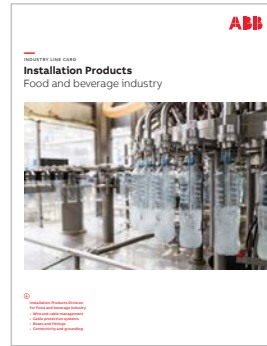
- 01 Commercial and institutional buildings.
- 02 Data centers.
- 03 Food and beverage industry.
- 04 Food and beverage industry - plant assessment.
- 05 Utility industry.
- 06 Power generation industry.
- 07 Chemical industry.
- 08 Oil and gas industry.
- 09 Wind power industry.
- 10 Renewable energy industry.
- 11 Water and wastewater treatment industry.
- 12 Single and multi-family housing industry.
- 13 Rail industry.
- 14 Civil infrastructure industry.
- 15 Metals and mining industry.



01



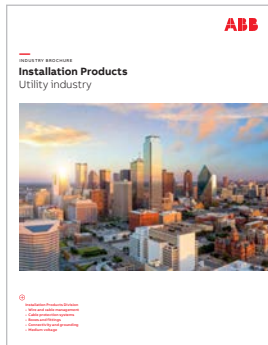
02



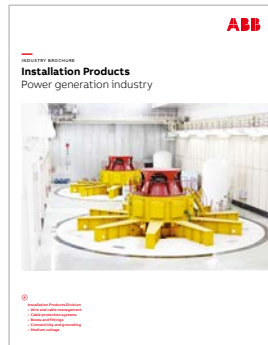
03



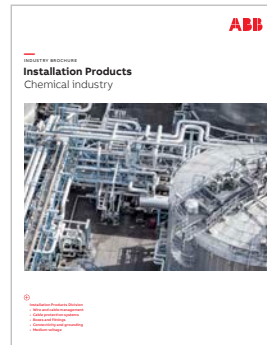
04



05



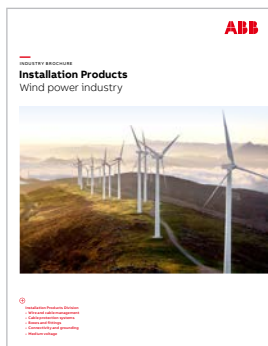
06



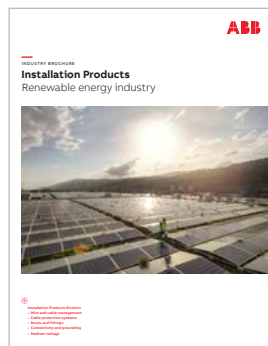
07



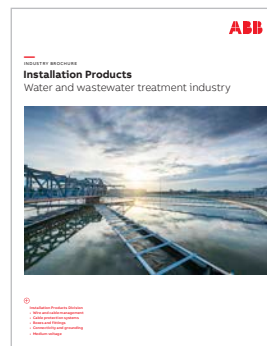
08



09



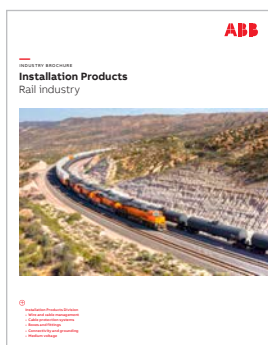
10



11



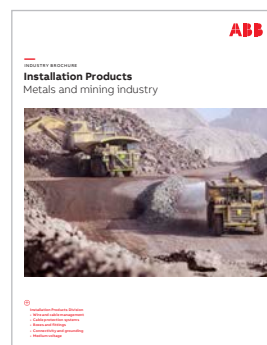
12



13



14



15



—
US

ABB Installation Products Inc.

electrification.us.abb.com