

Maxtor[®]

OneTouch™ **4 Plus**

OneTouch™ **4 Mini**

Macintosh User's Guide

Contents

Getting Started	1
Using the Formatting Tool	1
Preparing the Software Manually	4
Installing the Software	8
Managing Your Drives	14
Customizing the OneTouch Button	14
Running Diagnostics	17
Using RAID (OneTouch III Users)	18
Updating Your Software	25
Backing Up & Restoring Folders	28
Creating Backup Plans	28
Using Simple Backup	28
Creating a Custom Backup Plan	32
Managing Backup Plans	39
Editing Backup Settings	39
Deleting Backup Plans	42
Backing Up Manually	43
Restoring Files	45
Synchronizing Folders	48
Using Pre-configured Sync	48
Using Custom Sync	49
Completing the Sync	52
Removing Folders from Sync	53
Checking Sync Status	53
Using Automatic Sync	54
Turning Off Automatic Sync	54
Synchronizing Manually	55
Using the Maxtor Synchronization Window	55
Using Automatic Overwrite	57
Managing Security	58
Using DrivePass	58

Enabling DrivePass	58
Unlocking Your OneTouch Drive	60
Removing DrivePass	64
Changing Your DrivePass Password	66
If You Forget Your Password...	67
Using Maxtor Encryption	72
Creating an Encrypted Folder	73
Encrypting Files and Folders	75
Managing the Encrypted Folder	78
Deleting an Encrypted Folder	81
From the Security View...	81
From the Finder Window...	84
Changing Your Encryption Password	85
From the Security View...	85
From the Maxtor Encryption Window...	87
Frequently Asked Questions	89
Index	i

Getting Started

This User's Guide is written for both the OneTouch 4 Plus and OneTouch 4 Mini drives. The images in the User's Guide display a OneTouch 4 Plus drive, but all information is relevant for the OneTouch 4 Mini drive as well.

The Maxtor OneTouch 4 drive offers these features:

- Backup & Restore to protect your data
- Sync to synchronize one or more folders between two or more computers
- Security settings to password-protect both your drive and your data
- Encryption of multiple files and folders in one location
- A customized OneTouch button to quickly open a frequently-used program

The Maxtor OneTouch software is loaded on your OneTouch drive. Because the software is configured for a Windows operating system, the software must be prepared for installation on your Macintosh.

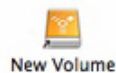
Using the Formatting Tool

The Mac OneTouch 4 Formatting Tool automatically prepares the Maxtor Manager software for installation on your Macintosh,

To use the Mac OneTouch 4 Formatting Tool,

Step 1: Connect your OneTouch 4 drive to your computer.

A **New Volume** icon appears on your desktop:



Step 2: Double-click the **New Volume** icon.

The **New Volume** Finder window opens:

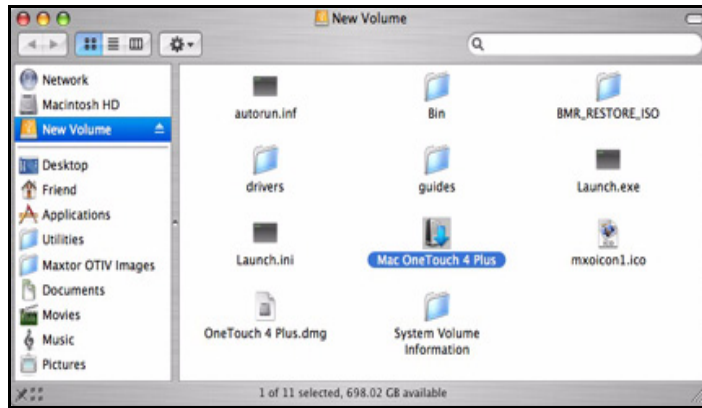


Figure 1: New Volume

The **New Volume** Finder window contains the **Mac OneTouch 4 Plus** Formatting tool.

Step 3: Double-click the **Mac OneTouch 4 Plus** (or **Mac OneTouch 4 Mini**) icon.

The **Mac OneTouch 4 Plus Formatter** window opens:

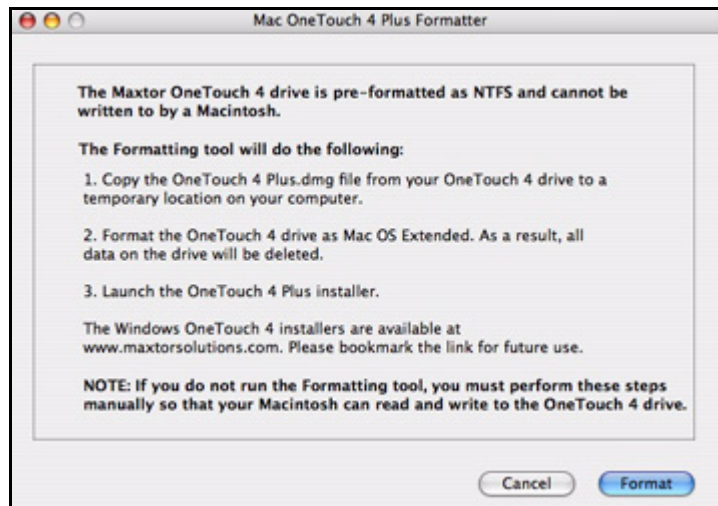


Figure 2: Mac OneTouch 4 Formatter

Step 4: After you've read the description of what the Formatting tool does, click **Format** to format your OneTouch 4 drive for a Macintosh.

The remainder of the software preparation is automatic. Here's what you see:

- The New Volume drive is dismounted and reformatted:

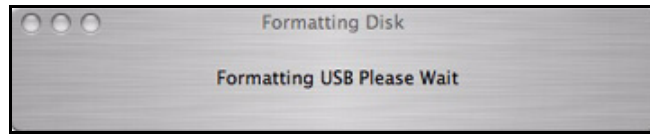
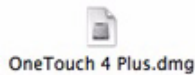


Figure 3: Formatting In Progress

- When formatting is complete, the OneTouch icon refreshes to display the name of the drive:



- The **OneTouch 4 Plus.dmg** file appears on your desktop:



- The **dmg** file automatically creates a **OneTouch 4 Plus** installer:



- The OneTouch 4 Plus installer **Welcome** window opens



Figure 4: Welcome

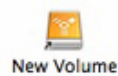
Preparing the Software Manually

If you don't want to use the Formatting Tool, you must manually prepare the Maxtor Manager software for installation on your Macintosh.

To manually prepare the software,

Step 1: Connect your OneTouch 4 drive to your computer.

A **New Volume** icon appears on your desktop:



Step 2: Double-click the **New Volume** icon.

The **New Volume** Finder window opens:

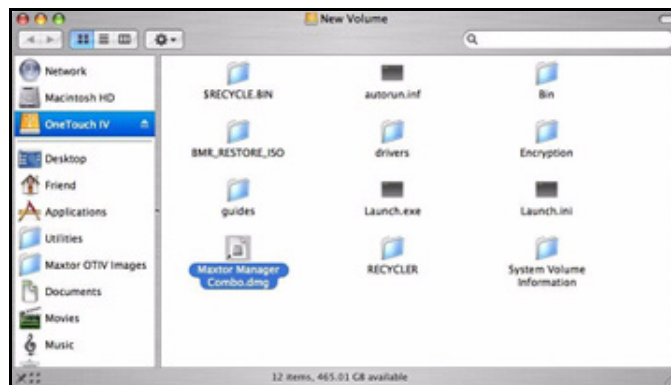


Figure 5: *New Volume*

Step 3: Drag the **Maxtor Manager xxx.dmg** file to your desktop.

Note: The filename will vary depending on which Maxtor 4 drive you've connected: **Maxtor Manager Plus.dmg** or **Maxtor Manager Mini.dmg**.

Step 4: Go to **Applications > Utilities > Disk Utility**:

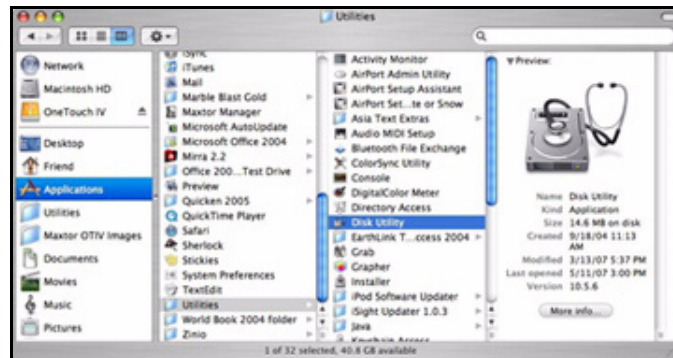


Figure 6: Disk Utility

The **Disk Utility** window opens:

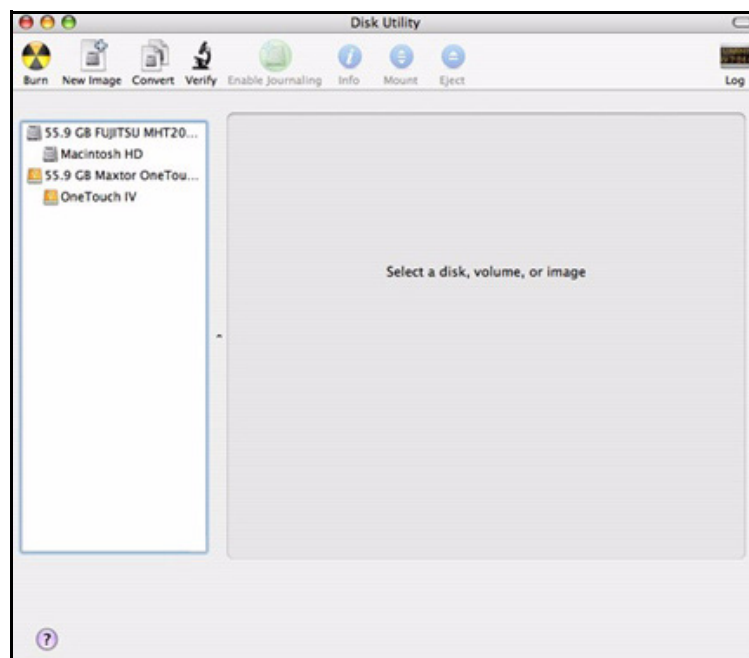


Figure 7: Disk Utility Erase

Step 5: Select **OneTouch 4** in the list:

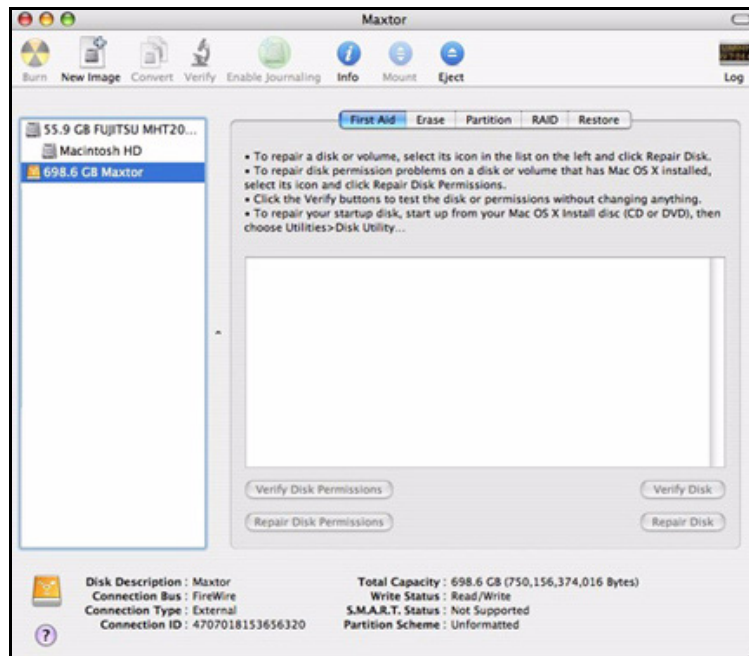


Figure 8: Disk Utility Erase

Step 6: Click the Erase tab:

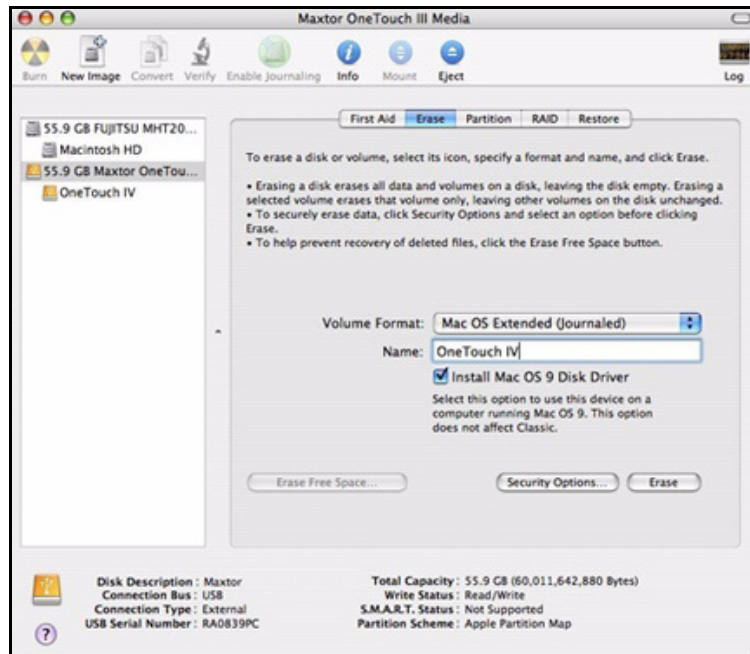


Figure 9: Disk Utility Erase

Step 7: Fill in this information:

- For **Volume Format**, select **Mac OS Extended...**
Any of the **Mac OS Extended** options will work.
- For **Name**, enter the name you want to give your OneTouch 4 drive.
- Deselect **Install Mac OS 9 Disk Driver**.

Step 8: Click **Erase**.

An **Erase Disk** warning sheet is displayed:

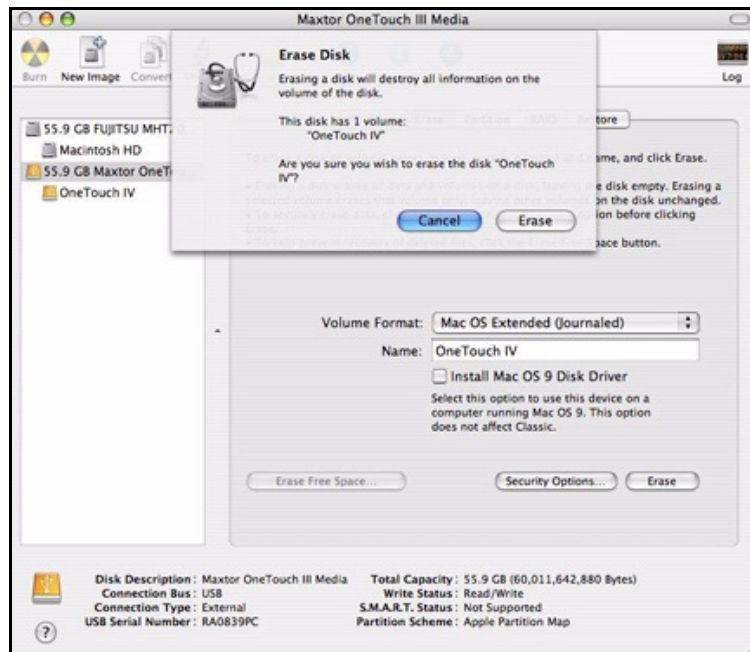


Figure 10: Erase Disk Warning

Step 9: Click **Erase** in the warning sheet.

Your OneTouch 4 drive is dismounted and then remounts with the name you entered.

Step 10: Close the Disk Utility.

The dmg file you dragged to your desktop automatically creates a **OneTouch 4 Plus** or **OneTouch 4 Mini** mounted volume:



Figure 11: Maxtor Manager Icon

Step 11: Double-click the **OneTouch 4** icon.

The **OneTouch 4 Plus** (or **Mini**) Finder window opens:

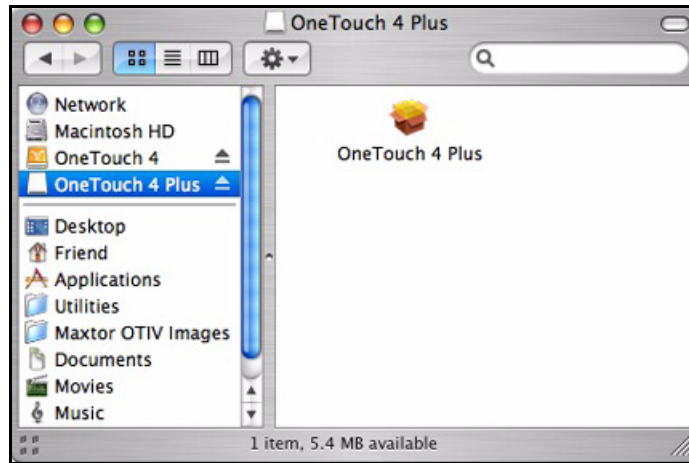


Figure 12: OneTouch 4 Plus

Step 12: Click the **OneTouch 4 Plus** (or **Mini**) icon.

The OneTouch 4 Plus or Mini Installer **Welcome** window opens



Figure 13: Welcome

Installing the Software

To install the OneTouch software,

Step 1: In the **Welcome** window, click **Continue**.

The **Read Me** window opens:

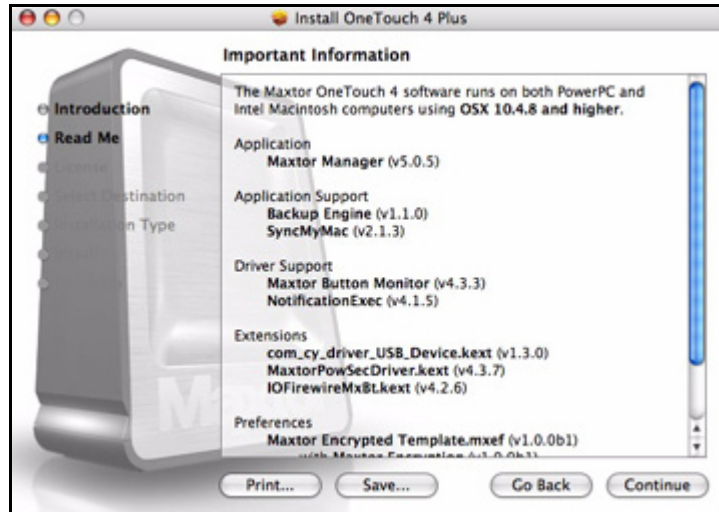


Figure 14: Read Me

Step 2: When you've read the information, click **Continue**.

The **Software License Agreement** window opens:

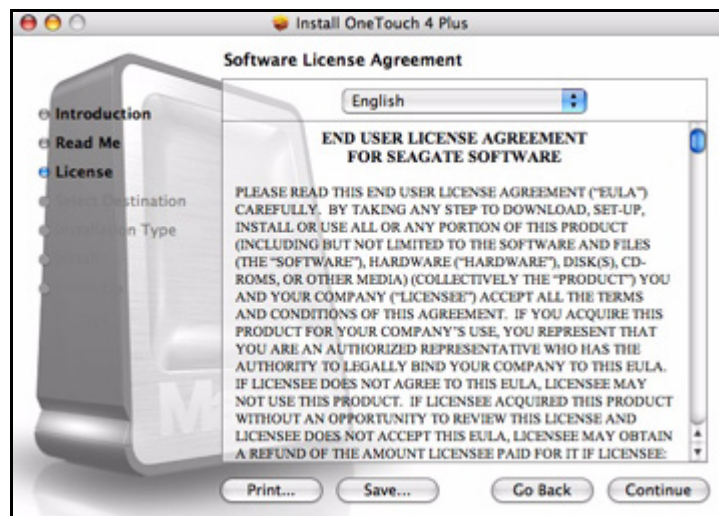


Figure 15: Software License Agreement

Step 3: Click **Continue**.

A sheet requires your agreement to continue the installation:

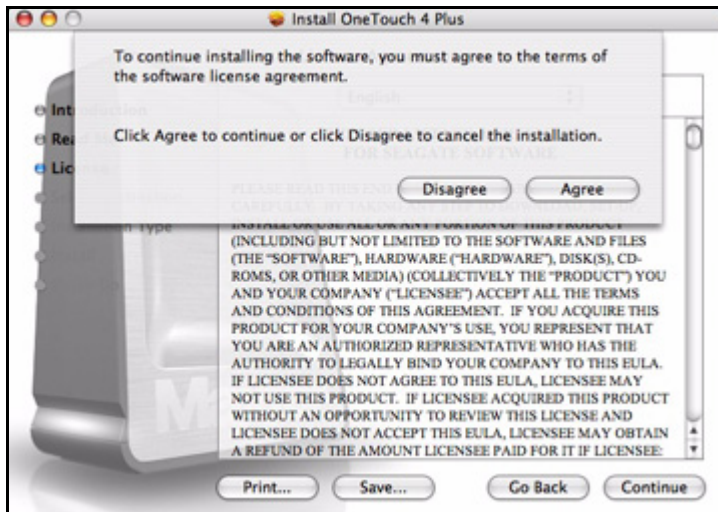


Figure 16: License Agreement sheet

Step 4: Click **Agree** in the sheet to continue the installation.

The **Select a Destination** window opens:



Figure 17: Select a Destination

Step 5: If it's not already selected, select your Macintosh hard drive and click **Continue**.

Note: The OneTouch 4 software can be installed only on the boot volume.

The **Installation Type** window opens:

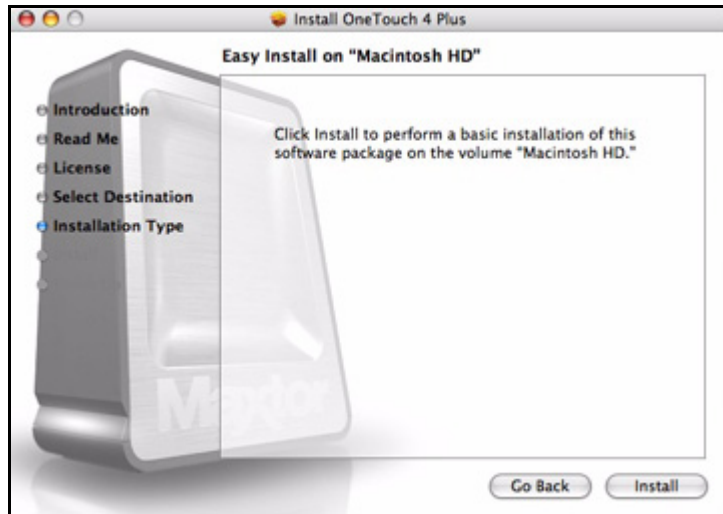


Figure 18: Installation Type

Step 6: Click **Install**.

A sheet warns that you'll have to restart your computer:

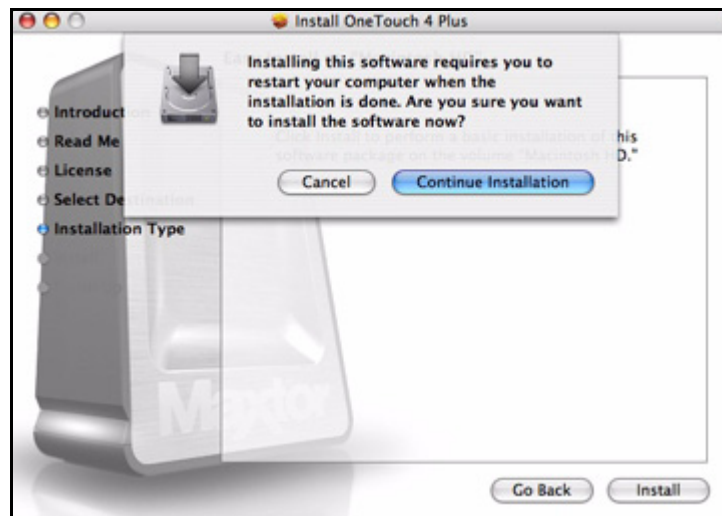


Figure 19: Restart Warning

Step 7: Click **Continue Installation** in the sheet.

A progress window keeps you informed as the installation proceeds:

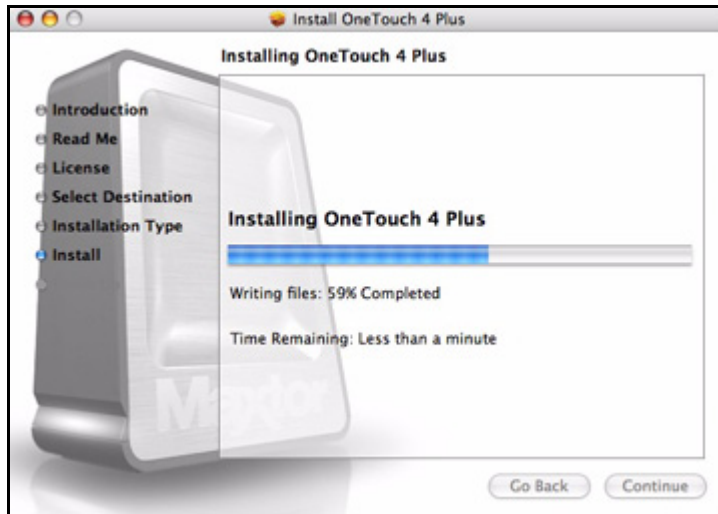


Figure 20: Installing OneTouch 4 Plus

When the installation is complete, a **Restart** window opens:

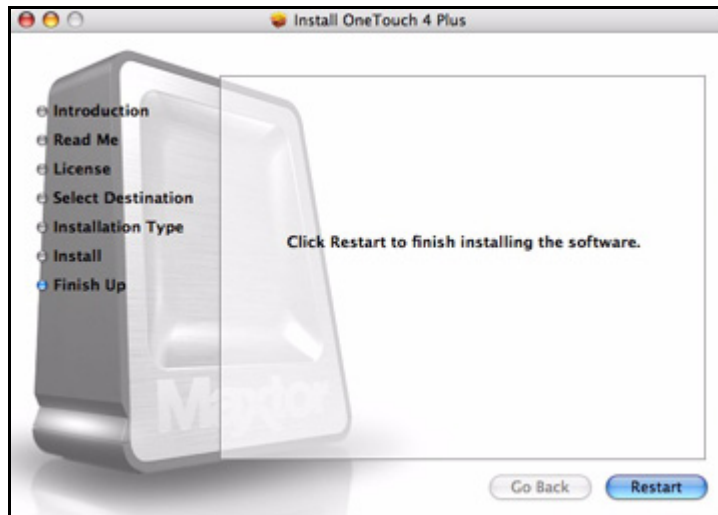


Figure 21: Restart

Step 8: Click **Restart** to restart your computer and complete the installation.

When your computer has restarted, a Maxtor Manager icon appears on your desktop:



Step 9: Double-click the Maxtor Manager icon to open the Maxtor Manager application:

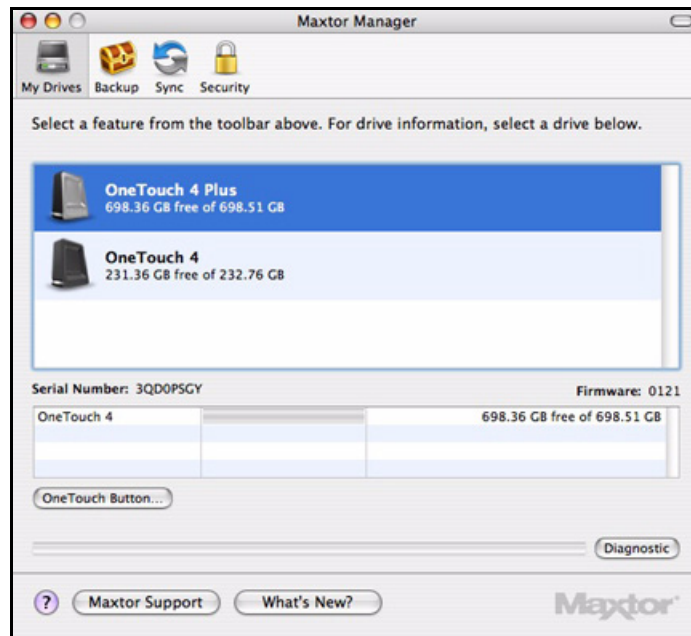


Figure 22: Maxtor Manager Application

You're ready to use your Maxtor OneTouch 4 drive.

Managing Your Drives

The **My Drives** view provides a central point from which to manage your Maxtor OneTouch™ devices. It displays all Maxtor devices connected to your computer:

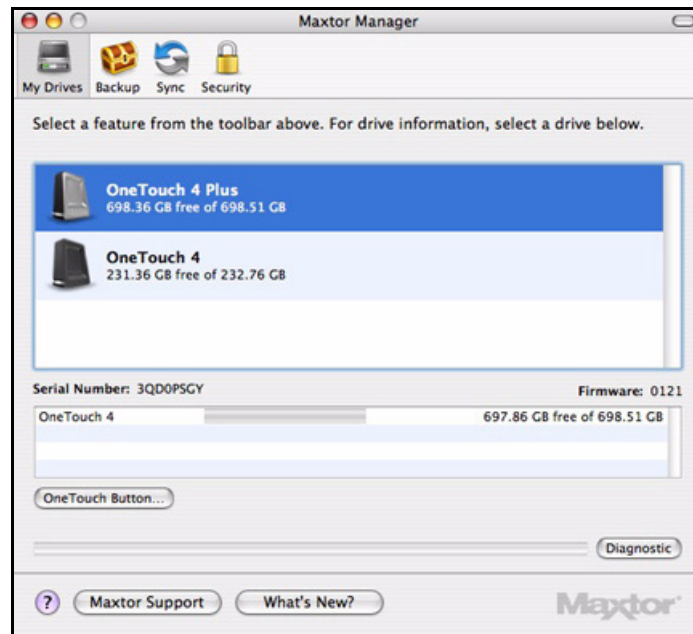


Figure 1: My Drives

The toolbar across the top of the window allows you to access your drive features and manage drive utilities.

*Note: External drives are automatically detected and listed in the **My Drives** view. It can take several seconds for the Maxtor Manager software to detect your device. If your device doesn't appear, make sure it's properly connected and turned on.*

Customizing the OneTouch Button

You can customize your OneTouch button, located on the front of your drive, so that your OneTouch drive automatically performs the action of your choice when you click the OneTouch button.

You can set the OneTouch button to

- Back up folders now
- Sync folders now

- Open the application of your choice

To customize your OneTouch button,

Step 1: In the **My Drives** view, click **OneTouch Button**.

A sheet is displayed:

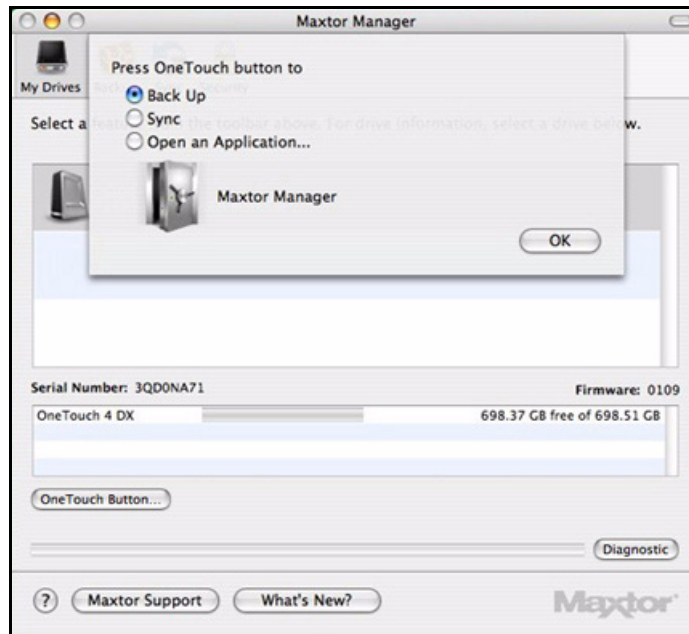


Figure 2: *Customize OneTouch Button*

Step 2: Select **Backup** or **Sync** and click **OK** to link that action to the OneTouch button.

— OR —

Select **Open an Application** to choose an application to open when you press the OneTouch button.

An **Open** panel appears:

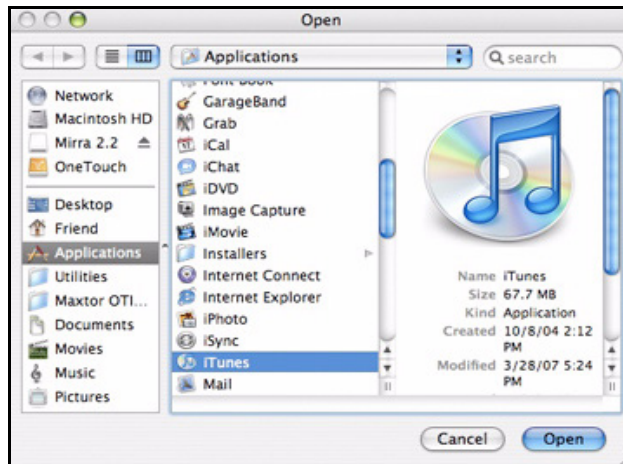


Figure 3: Applications Menu

Step 3: Select the application to be associated with the OneTouch button and click **Open**.
The application you've chosen now appears in the sheet:

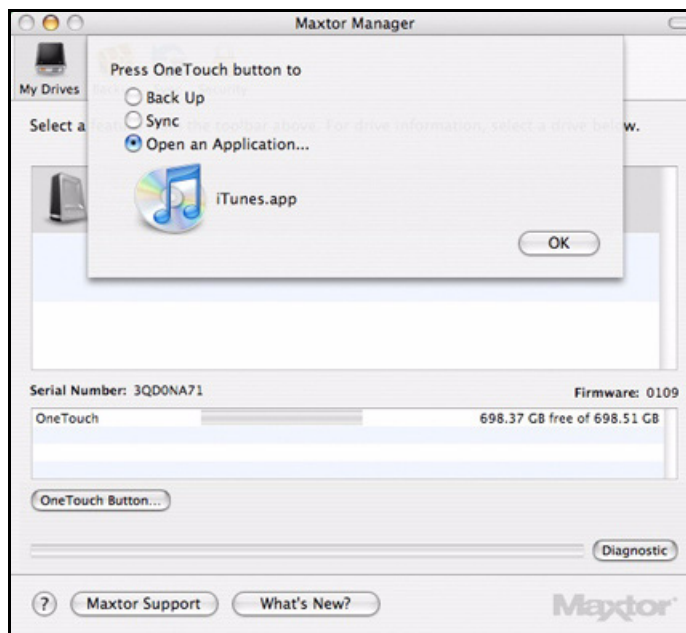


Figure 4: Customize OneTouch Button - Application Selected

Step 4: Click **OK**.
You can now open the selected application by pressing the OneTouch button.

Running Diagnostics

Use Diagnostics to check the health of your OneTouch drives. The diagnostic utility performs its tests without affecting the data on your drive.

To run Diagnostics,

- In the **My Drives** view, click **Diagnostic**.

A progress bar indicates the progress of the diagnostic:

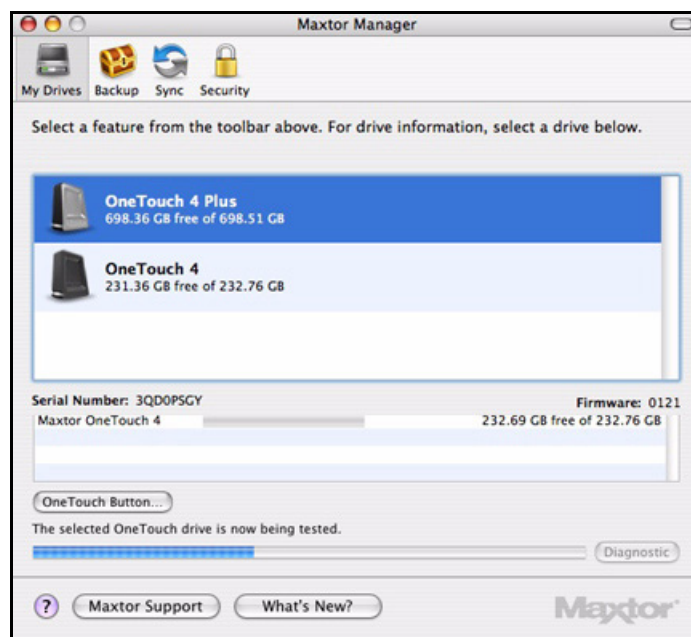


Figure 5: Diagnostics in Progress

When the test is complete, the results are displayed in the **My Drives** view:

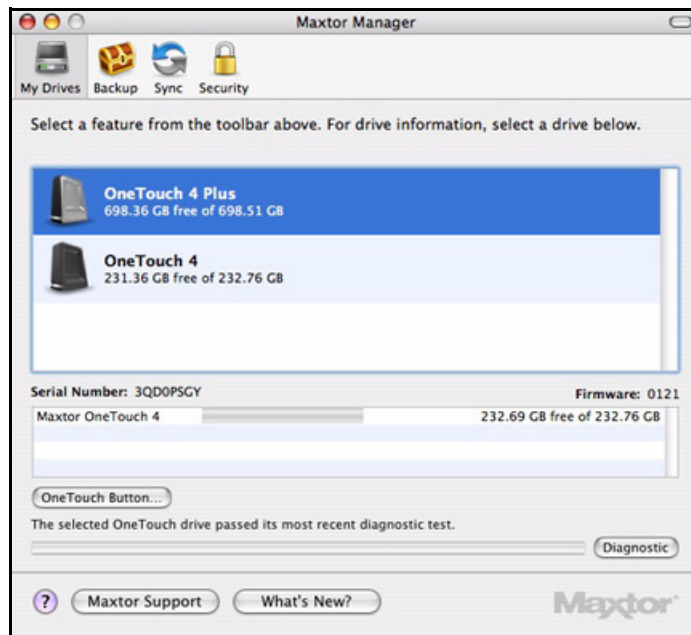


Figure 6: Diagnostics Complete

The drive pictured above is functioning normally. If the diagnostic encounters an error during testing, the serial number of the bad device is displayed with instructions to contact Seagate for service and support.

Using RAID (OneTouch III Users)

If your OneTouch III drive supports RAID, you can access this feature via the OneTouch 4 **My Drives** view:

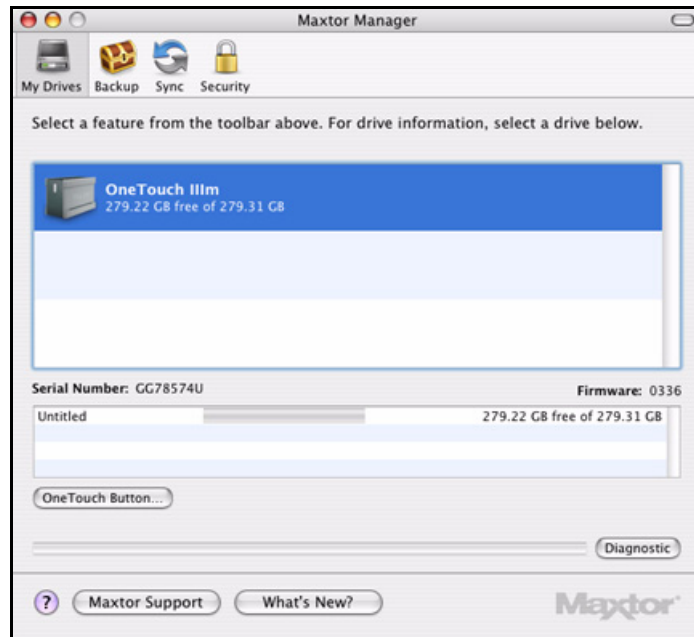


Figure 7: My Drives

To use RAID,

Step 1: In the **My Drives** view, select your OneTouch III drive and go to **Drives > RAID Settings** in the title bar:

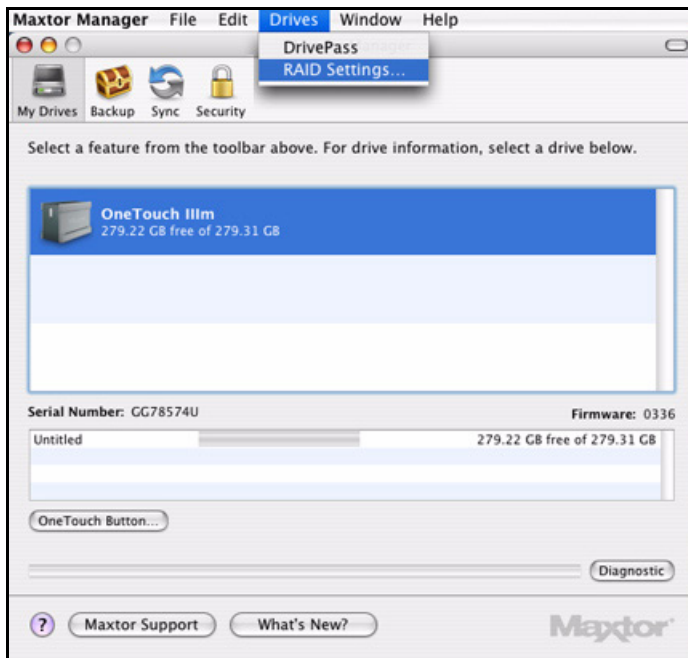


Figure 8: RAID Settings

The RAID Settings sheet is displayed:

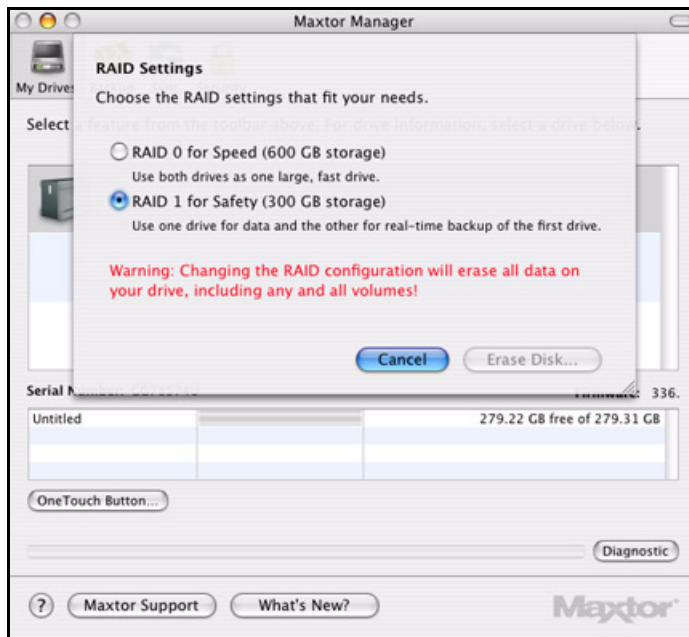


Figure 9: RAID Settings

Step 2: Select the RAID configuration that is *not* currently selected and click **Erase Disk**.

The **RAID Drive Erase Confirmation** sheet is displayed:

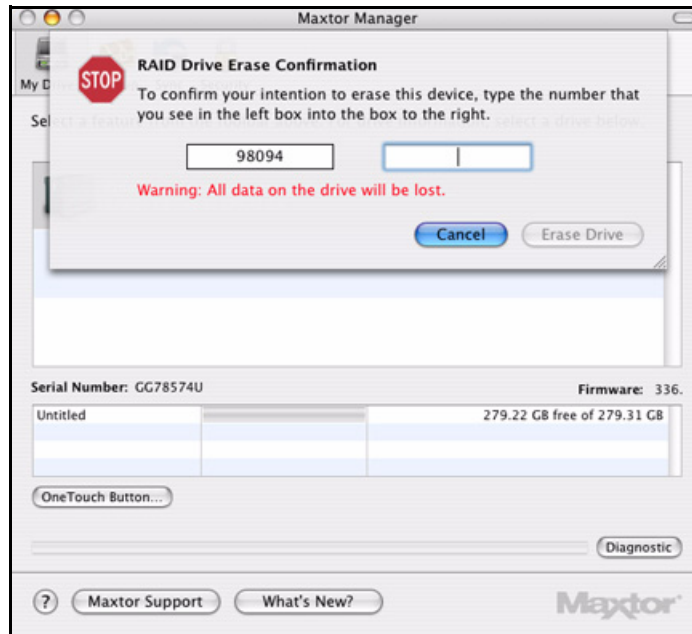


Figure 10: RAID Drive Erase Confirmation

Step 3: Enter the number displayed and click **Erase Drive**.

A **Disk Insertion** dialog is displayed:

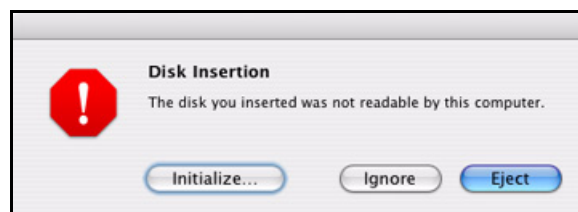


Figure 11: Disk Insertion

Step 4: Click **Initialize** to prepare your OneTouch for use.

The **Disk Utility** window opens:

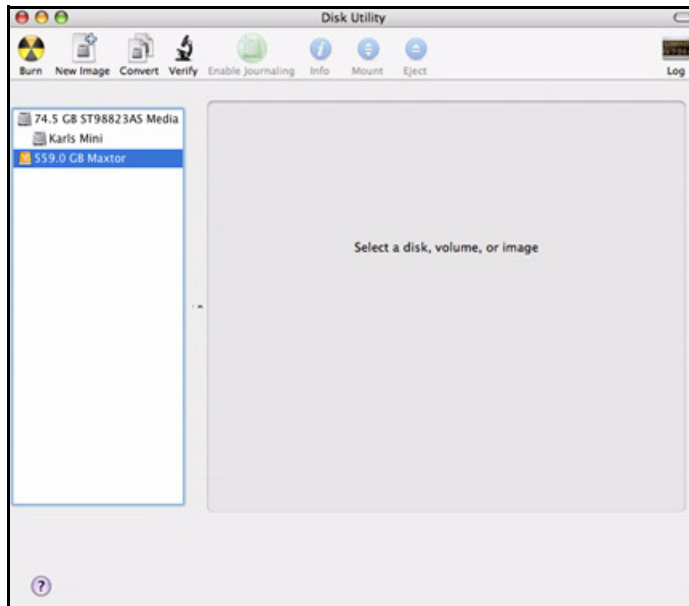


Figure 12: Disk Utility

Step 5: Select the Maxtor drive from the list.

The **First Aid** tab is displayed:

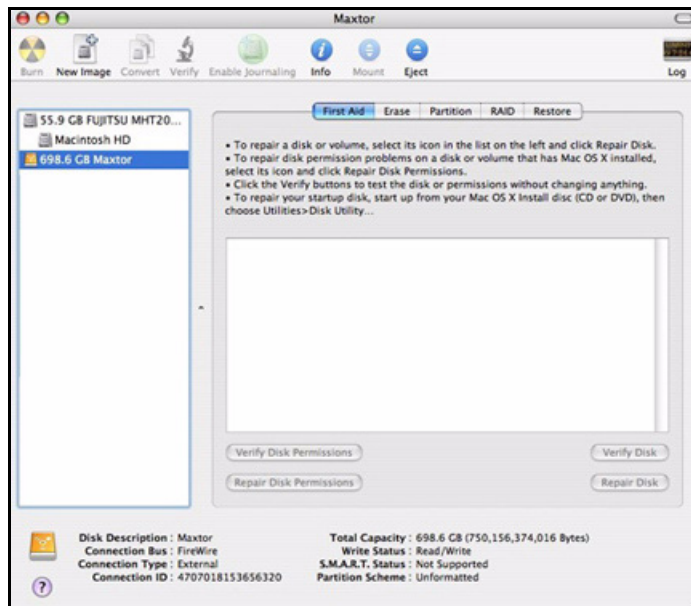


Figure 13: Disk Utility

Step 6: Click the **Erase** tab:

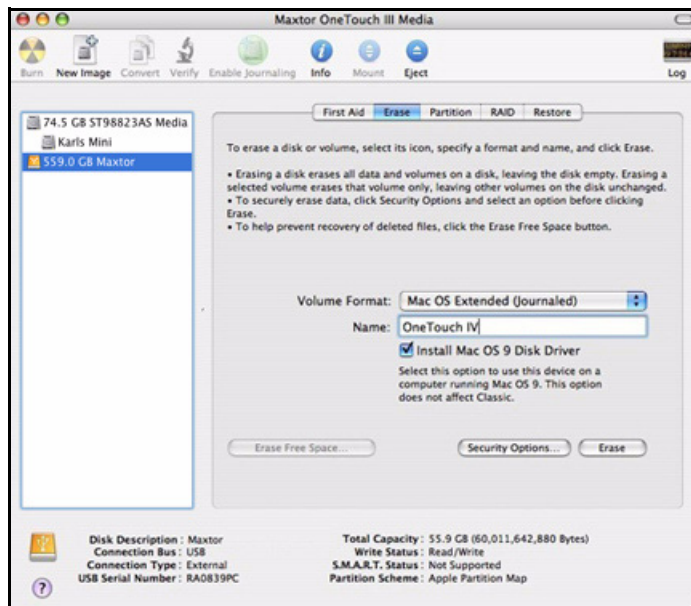


Figure 14: Disk Utility Erase

Step 7: Enter this information:

- For **Volume Format**, select **Mac OS Extended...**
Any of the **Mac OS Extended** options will work.
- For **Name**, enter the name you want to give your OneTouch 4 drive.
- Deselect **Install Mac OS 9 Disk Driver**.

Step 8: Click **Erase**.

An **Erase Disk** sheet is displayed:

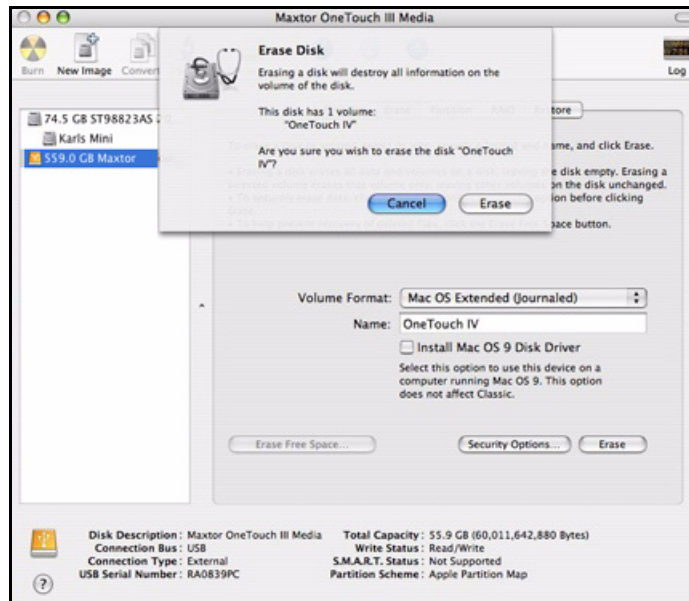


Figure 15: Erase Disk Warning

Step 9: Click **Erase** in the **Erase Disk** sheet.

Your OneTouch 4 drive is dismantled and then remounts with the name you entered.

Step 10: Close the Disk Utility.

Step 11: Click the Maxtor Manager desktop icon.

The **My Drives** view opens:

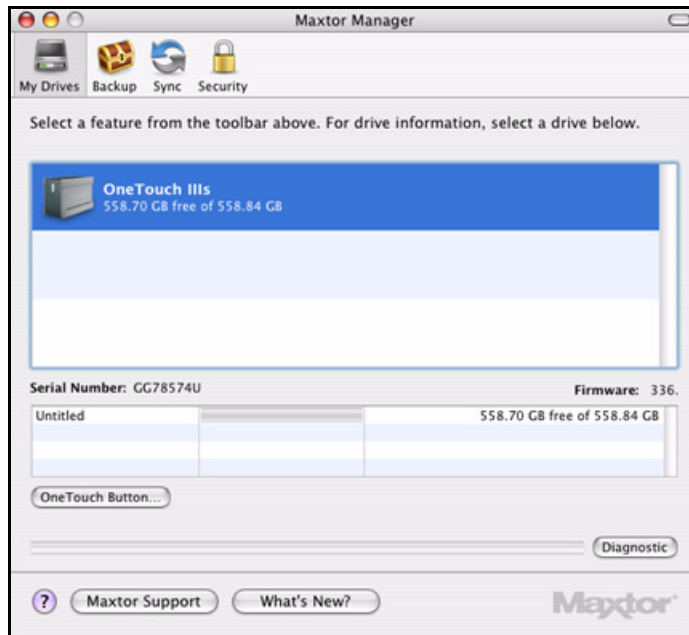


Figure 16: My Drives

Your current RAID configuration is reflected in the name of your OneTouch III:

- **OneTouch IIIs:** Striped (RAID 0)
- **OneTouch IIIm:** Mirrored (RAID 1)

Updating Your Software

The Software Update feature automatically informs you each month of whether your software is up to date. However, you can manually check to see if an update is available or you can turn off the Software Update feature.

Note: You can check manually for software updates or turn off Software Update from any view.

To manually check for updates or turn off Software Update,

Step 1: In the menu bar, go to **Help > Software Update**.

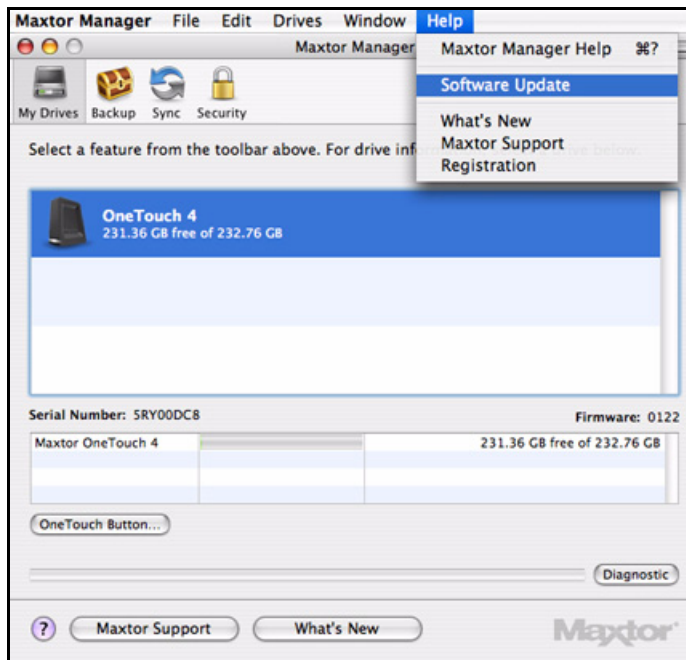


Figure 17: Software Update

The **Software Update** window opens:



Figure 18: Software Update

Software Update is selected by default.

Step 2: To turn off Software Update, unselect **Check for updates automatically**.

Step 3: To check for updates now, click **Check Now**.

A window informs you of whether your software is up to date:

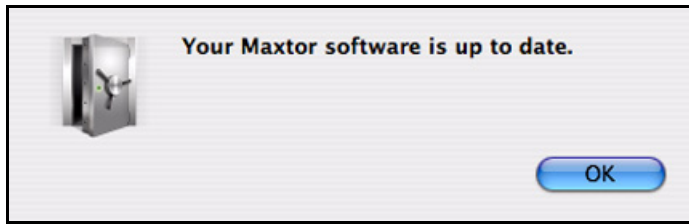


Figure 19: Software Update

Step 4: Click **OK**.

Backing Up & Restoring Folders

The Maxtor OneTouch Backup feature allows you to

- Create and manage multiple Backup Plans
- Schedule the backup of selected folders
- Edit backup settings
- Launch an immediate backup
- Restore backed up files

After the initial backup, the OneTouch software backs up changed files in backed up folders on a schedule you set or when you click **Back Up Now** in the **Backup** view.

You can create one Backup Plan to back up all your folders or you can create multiple Backup Plans for different sets of folders.

You can use either of two types of Backup Plan:

- **Simple Backup:** Pre-configured to back up your home folder daily at 10:00 p.m.
— OR —
- **Custom Backup:** You select the folders to be backed up and set up a backup destination and schedule.

Creating Backup Plans

Using Simple Backup

Use Simple Backup to back up your home folder daily at 10 p.m.

To use Simple Backup,

Step 1: Click **Backup** in the toolbar.

The **Backup Plans** view is displayed:

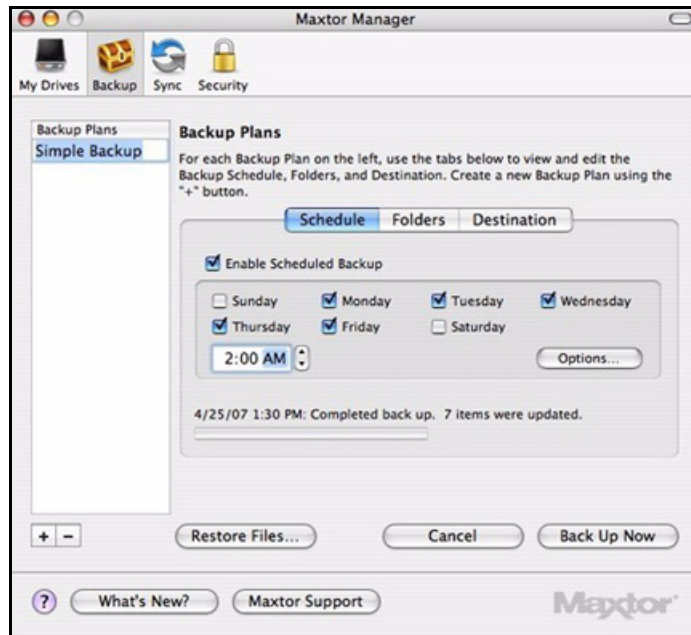


Figure 1: Backup View

Simple Backup appears in the **Backup Plans** list.

If this is your first time opening the **Backup Plans** view, a sheet describes Simple Backup:

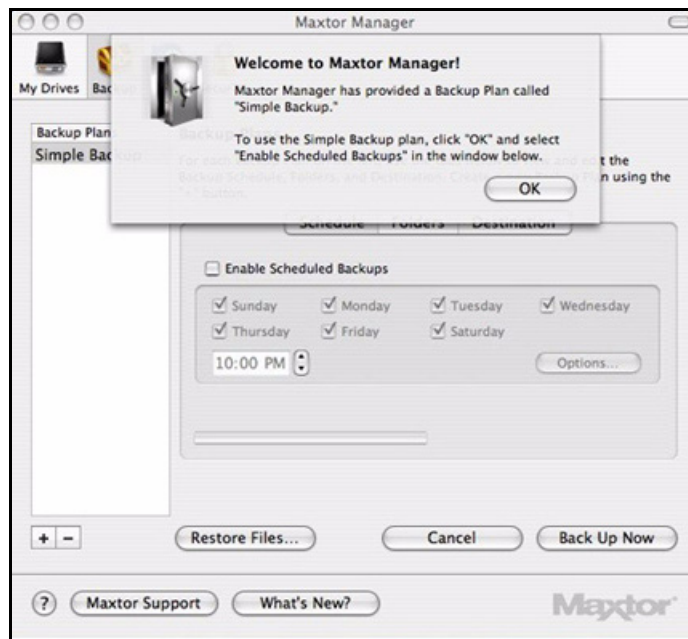


Figure 2: Simple Backup Welcome

Step 2: Click **OK**.

Step 3: Select **Enable Scheduled Backup**.

All days are scheduled for backup at 10:00 PM:

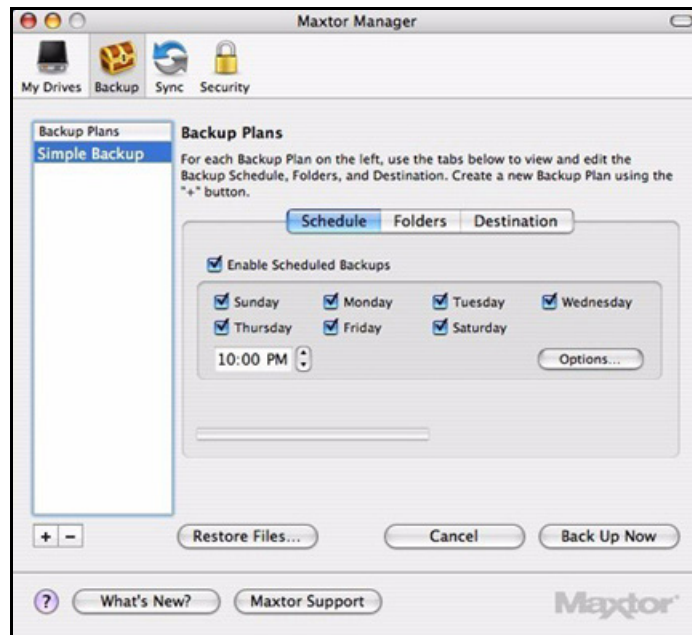


Figure 3: Simple Backup Schedule

Step 4: To re-name the Simple Backup plan, double-click on **Simple Backup** in the **Backup Plans** pane so that it becomes editable and enter a name.

Step 5: Select **Simple Backup** or the name you've given it and click **Back Up Now**.

A progress bar below the **Schedule** tab view informs you of the progress of your backup:

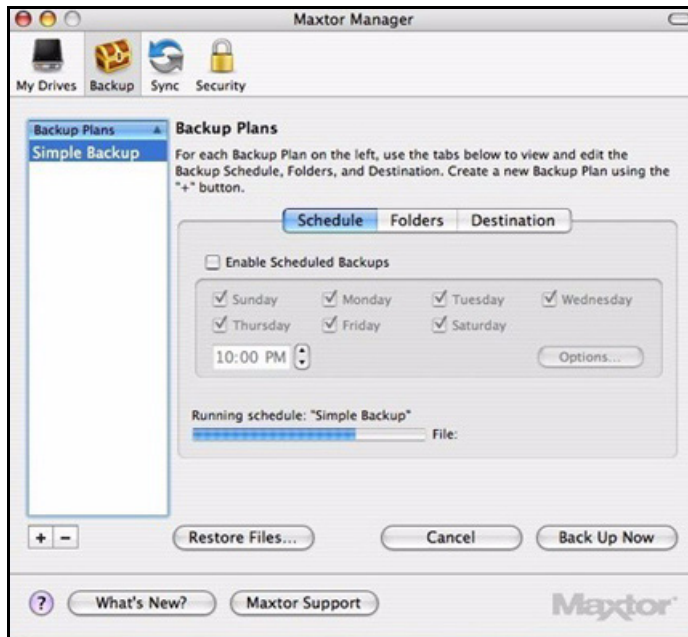


Figure 4: Simple Backup Progress

When the backup is complete, the date, time, and number of files in the backup are displayed:

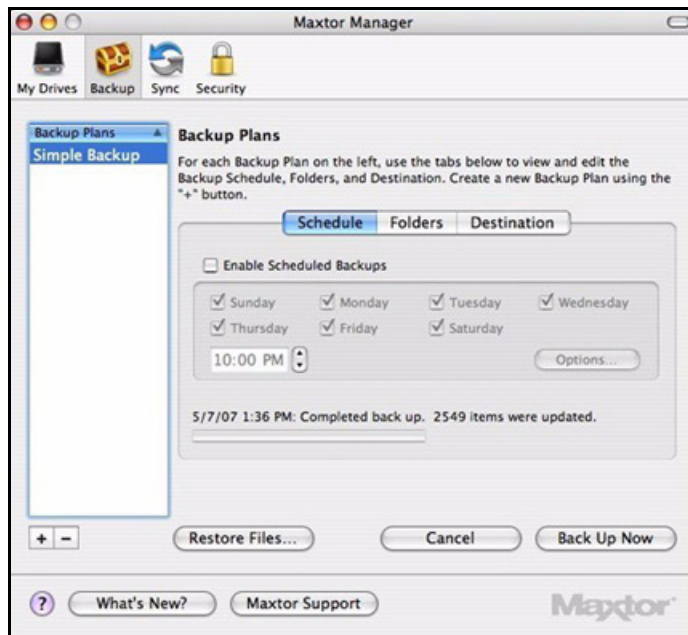


Figure 5: Simple Backup Completed

Creating a Custom Backup Plan

To select specific folders for backup and set up a backup destination and schedule,

Step 1: Click **Backup** in the toolbar.

The **Backup Plans Schedule** tab view is displayed:

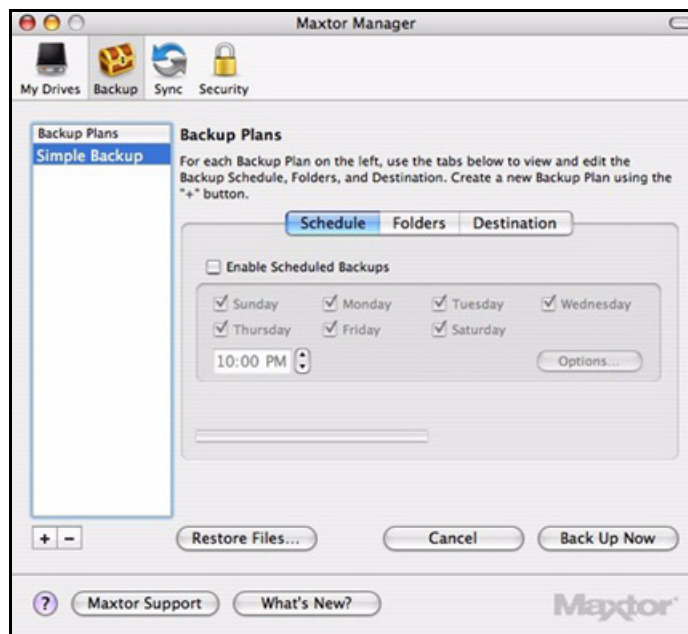


Figure 6: Backup Plans

Step 2: Click the plus sign (+) below the **Backup Plans** list to add a custom backup.

Untitled backup appears in the **Backup Plans** list:

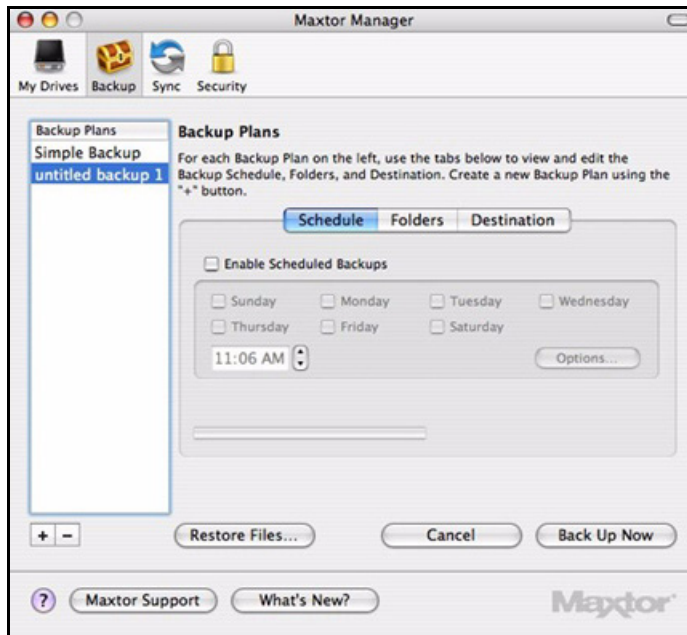


Figure 7: Custom Backup Plan

Step 3: To name this Backup Plan, double-click **untitled backup** so that it becomes editable and enter a name:

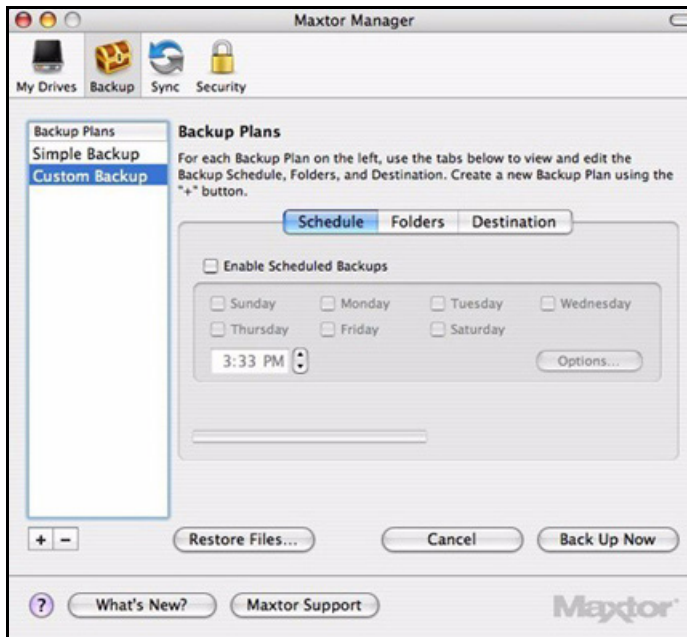


Figure 8: Name Custom Backup Plan

Step 4: Select **untitled backup** or the name you've given it (**Custom Backup** in the image above) and select **Enable Scheduled Backup** in the **Schedule** tab view.

The **Schedule** tab view becomes active:

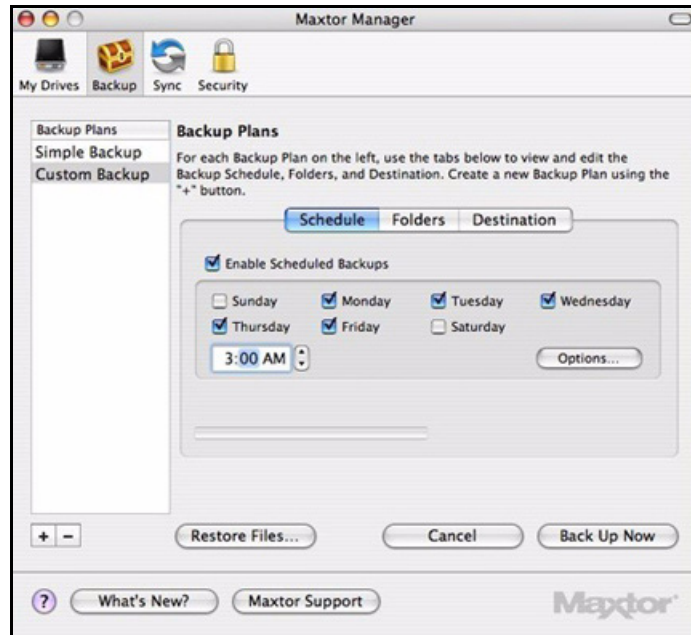


Figure 9: Backup Plan Schedule

Step 5: Select the days and time for your backup and click **Options**.

Step 6: The power options sheet is displayed:

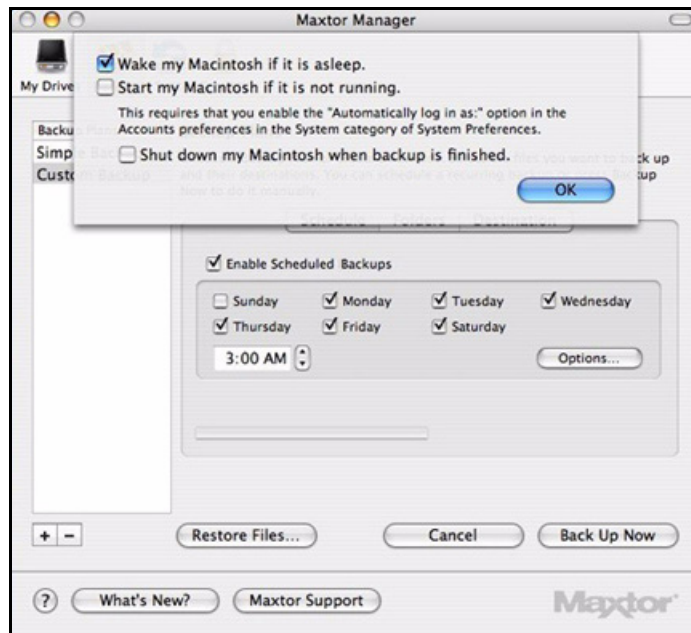


Figure 10: Backup Schedule Options

Step 7: Set your power options to accommodate your backup schedule and click **OK**.

Step 8: Click **Folders** in the **Backup Plans** view.

The **Backup Plans Folders** tab view is displayed:

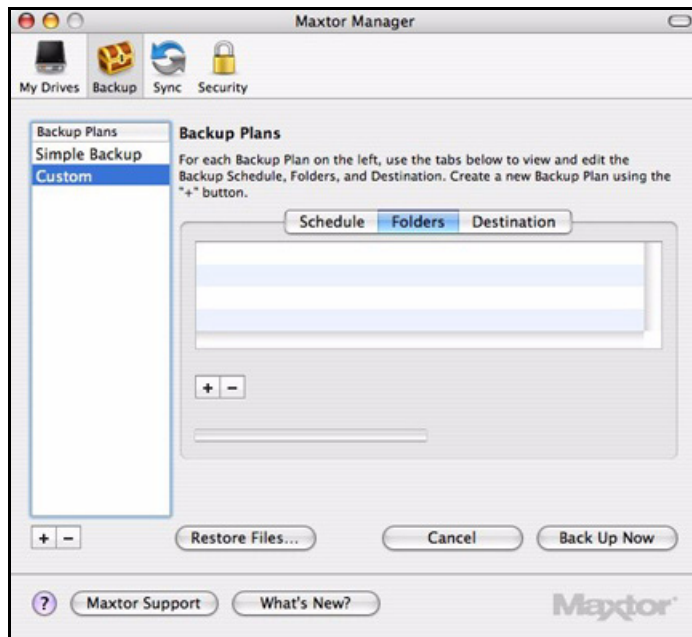


Figure 11: Backup Folder Options

Step 9: Click the plus sign (+) below the **Folders** tab view to browse to a folder to back up. An Open panel is displayed:

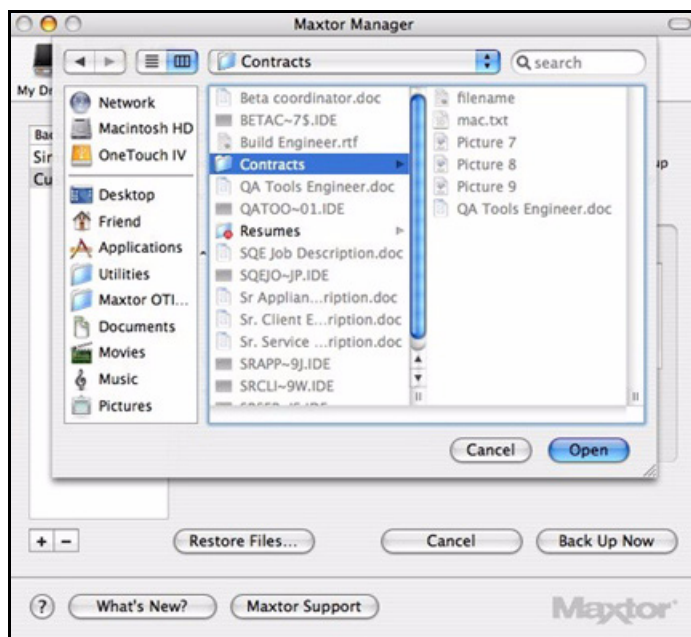


Figure 12: Maxtor Manager Panel

Step 10: Select a folder for backup and click **Open**.

The **Folders** tab view now displays the path of the folder you've selected:

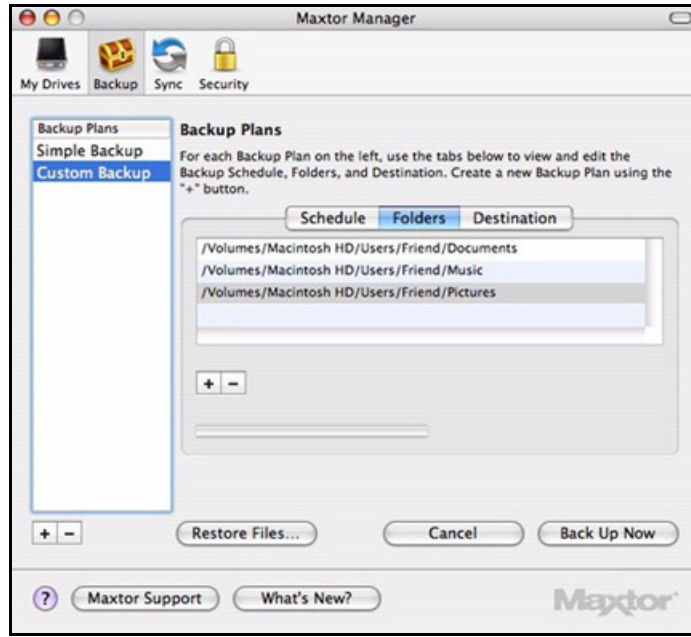


Figure 13: Backup Folder Path

Step 11: Click **Destination** in the **Backup Plans** view.

The **Backup Plans Destination** tab view is displayed:

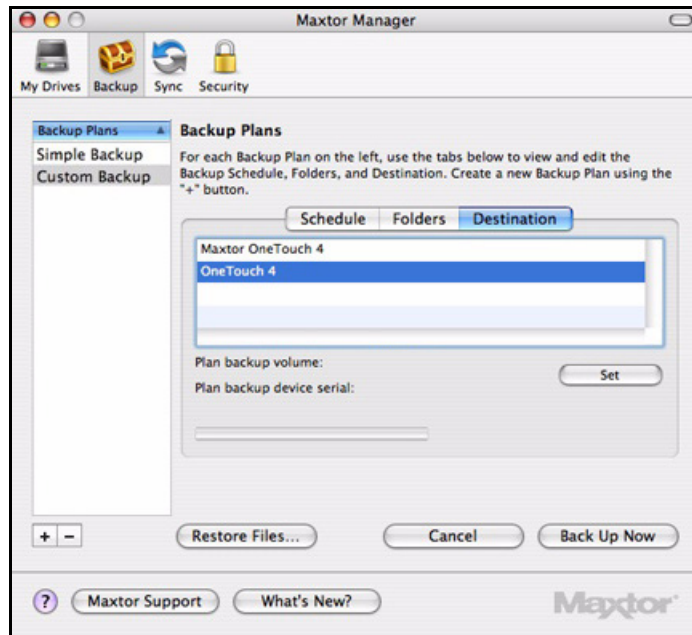


Figure 14: Backup Plan Destination

Listed are the drives currently connected to your computer.

Step 12: Select the destination drive for your backup and click **Set**.

The name and serial number of the selected drive are now displayed:

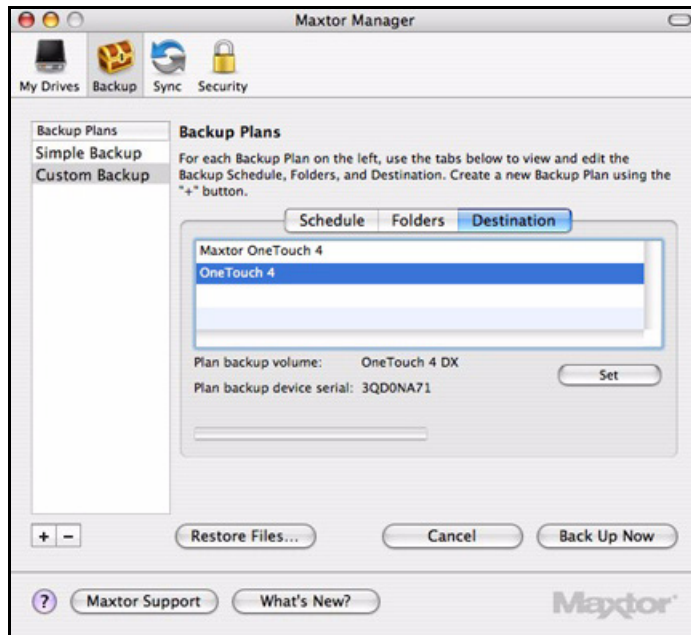


Figure 15: Backup Plan Destination Selected

Managing Backup Plans

Editing Backup Settings

To edit the settings for a Backup Plan,

Step 1: Click **Backup** in the toolbar.

The **Backup Plans** view displays your current Backup Plan names and schedule:

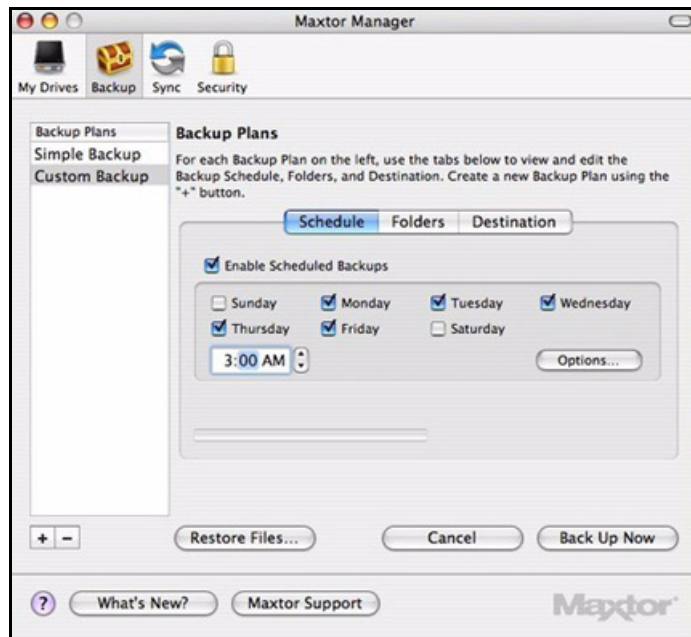


Figure 16: Backup Plan Schedule

Step 2: In the **Backup Plans** list, select the Backup Plan to be edited.

- (a) To edit the name of this Backup Plan, double-click the name in the **Backup Plans** list so that it becomes editable and enter a new name:
- (b) To edit the schedule, select or deselect the days for the backup and change the backup time.
- (c) To edit the power options, click **Options**, make the desired changes in the power options sheet, and click **OK**.

Step 3: Click **Folders** in the **Backup Plans** view.

The **Folders** tab view displays the path of your currently selected folder:

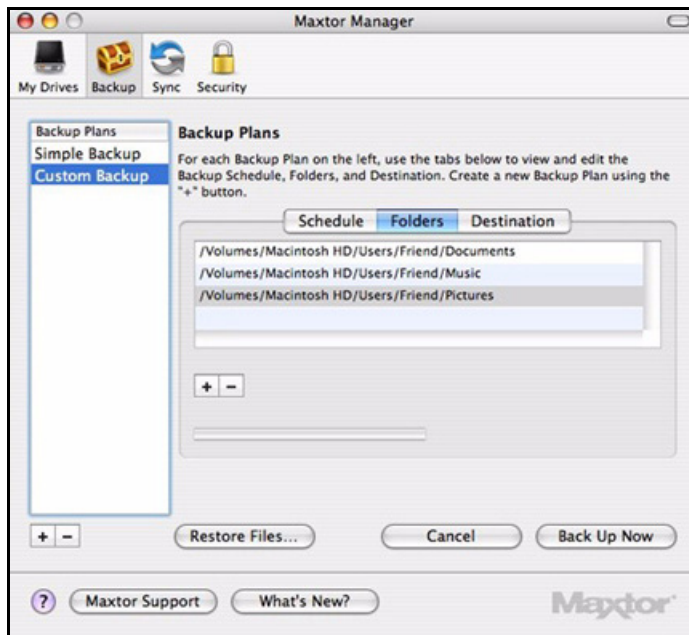


Figure 17: Backup Folder Path

Step 4: Select the path and click the plus sign (+) below the **Folders** list. An Open panel displays the currently selected folder:

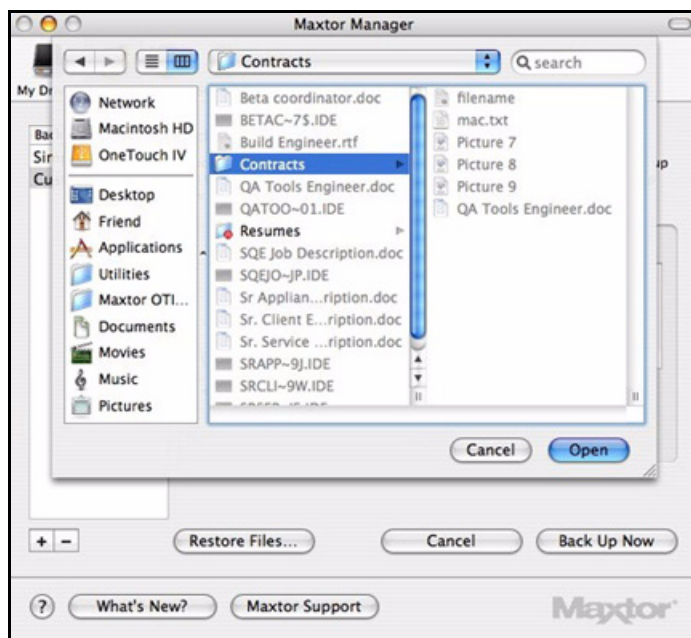


Figure 18: Backup Folder Selection

Step 5: Select a different folder for backup and click **Open**.

The **Folders** tab view now displays the path of the folder you've selected:

Step 6: Click **Destination** in the **Backup Plans** view.

The **Backup Plans Destination** tab view displays the current backup destination:

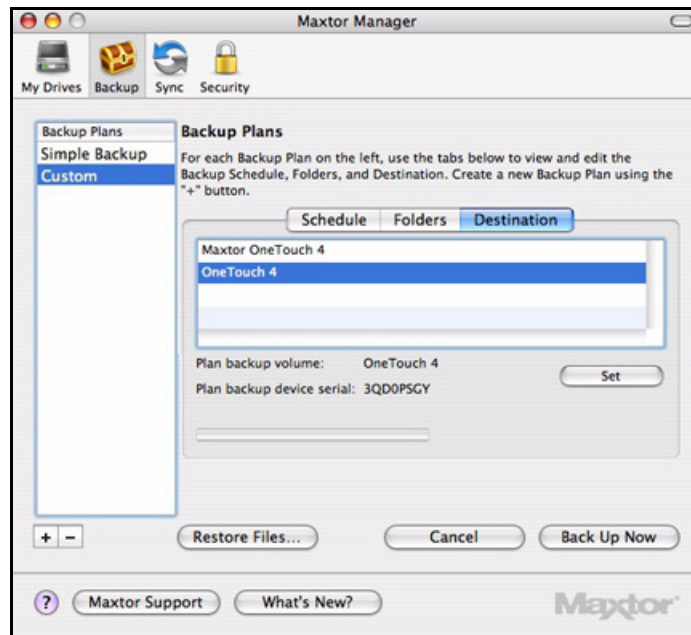


Figure 19: Backup Plan Destination

Listed are the drives currently connected to your computer.

Step 7: If you wish, select a different destination drive for your backup and click **Set**.

The name and serial number of the selected drive are now displayed.

Deleting Backup Plans

You can delete a Backup Plan for any OneTouch drive connected to your computer.

To delete a backup plan,

Step 1: Click **Backup** in the toolbar.

The **Backup Plans** view displays your current Backup Plans:



Figure 20: Backup Plans

Step 2: Select the Backup Plan to be deleted in the **Backup Plans** view.

Step 3: Click the minus sign (-).

The Backup Plan is removed from the **Backup Plans** list.

Backing Up Manually

To manually generate an immediate backup of folders already selected for backup,

Step 1: Click **Backup** in the toolbar.

The **Backup Plans** view is displayed:

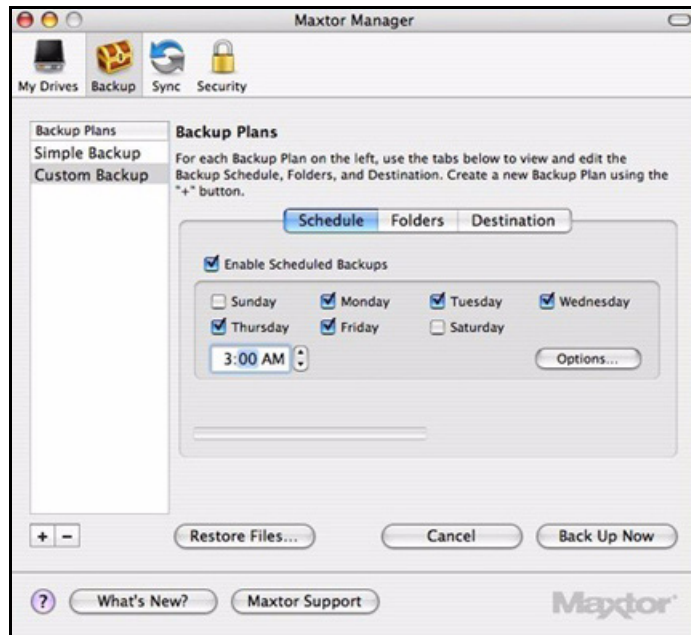


Figure 21: Backup Plans

Step 2: Click **Back Up Now**.

The progress bar below the **Schedule** tab view indicates a backup in progress. When the backup is complete, the date and time of the backup are displayed:

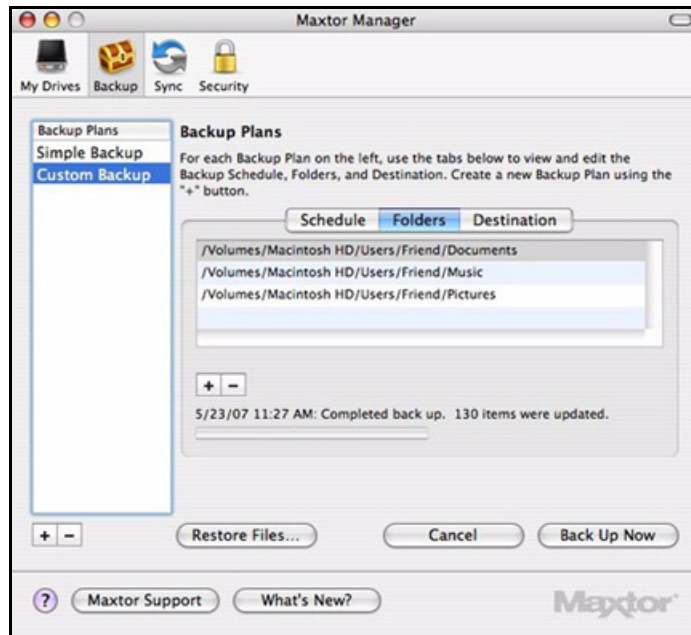


Figure 22: Backup Complete

Restoring Files

When you back up the files stored in selected folders, the OneTouch Manager saves ten (10) previous, or historical, versions of each revised file stored on your OneTouch drive. You can restore a saved historical version of a backed up file based on the date it was backed up or you can restore the most recent version of a backed up file.

To restore files,

Step 1: Click **Backup** in the toolbar.

The **Backup Plans** view is displayed:



Figure 23: Backup Plans

Step 2: Select a Backup Plan in the **Backup Plans** list.

Step 3: Click **Restore Files**.

The **Restore** options sheet is displayed:

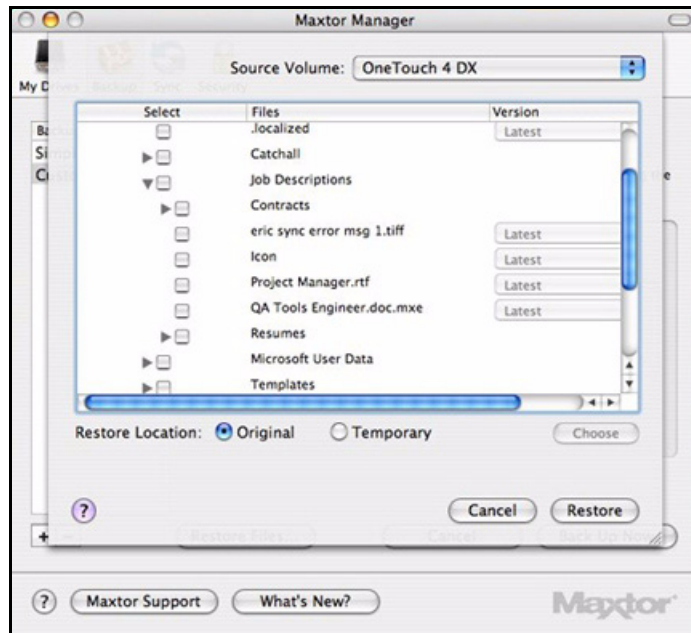


Figure 24: Restore Options

Listed are the contents of the backed up folder.

Step 4: Select the files and, if relevant, the file versions to be restored.

Step 5: Select a location at which to restore the files:

- (a) Select **Original** to restore the files to their original location on your computer.
- (b) Select **Temporary** to restore the files to a temporary **Maxtor Restore** folder.
- (c) Click **Choose** to browse to and choose another location on your computer.

Step 6: Click **Restore**.

Synchronizing Folders

Sync is designed to synchronize one or more folders between two or more computers. You can sync selected folders from one computer to your OneTouch drive and then connect the drive to another computer to complete the sync.

Caution: Sync is designed to synchronize user data. Do not select your **Library**, **System**, or **Applications** folders for Sync.

You have these Sync options:

Pre-configured Sync:	Custom Sync:
Sync Documents, Music, Pictures, and Movies	Select one or more folders to sync
Always overwrite older file versions	Select automatic or manual sync
Sync automatically	Set Sync and Copy & Replace Rules

Note: Make sure all computers participating in the Sync are set to precisely the same time to ensure that Sync works properly.

Using Pre-configured Sync

To use the pre-configured Sync settings,

Step 1: Click **Sync** in the toolbar.

The **Sync** view is displayed:

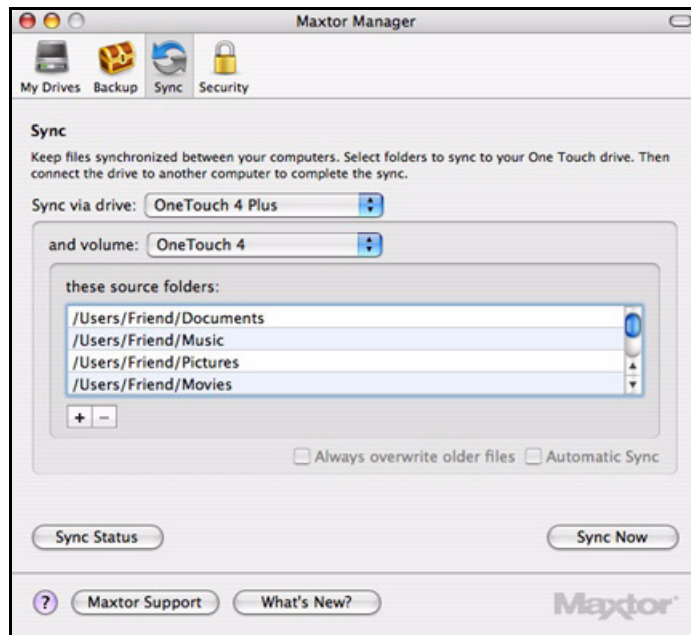


Figure 1: Sync

Step 2: Select the drive and volume on which to sync folders.

Documents, Music, Pictures, and Movies have been pre-selected for Sync.

Step 3: Check **Automatic Sync** and, if you wish, **Always overwrite older files**.

Your first sync starts when you check **Automatic Sync**. These folders will automatically be synchronized each time a file within them changes.

Using Custom Sync

To customize your Sync options,

Step 1: Click **Sync** in the toolbar.

The **Sync** view is displayed:

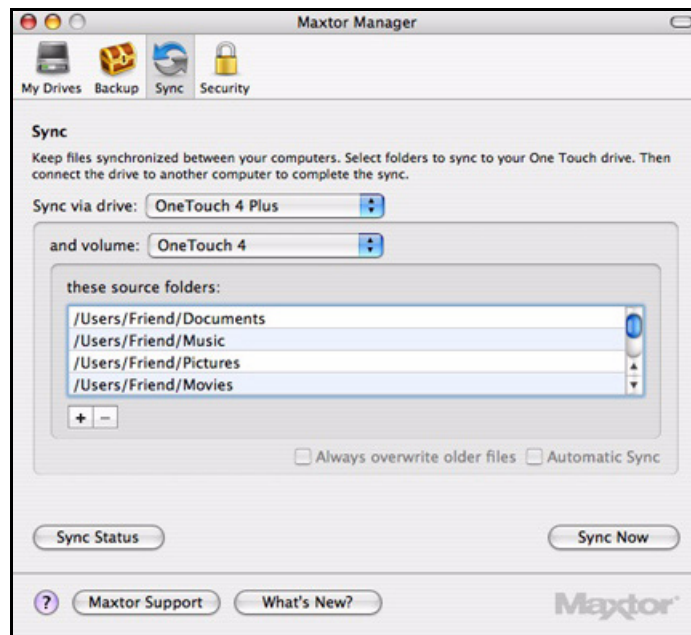


Figure 2: Sync

Step 2: Select the drive and volume on which to sync folders.

The **Documents**, **Music**, **Pictures**, and **Movies** folders have been pre-selected for Sync.

Step 3: Click – to remove a folder from sync.

Step 4: Click + to select folders to be synchronized.

The **Select folders to sync** panel is displayed:

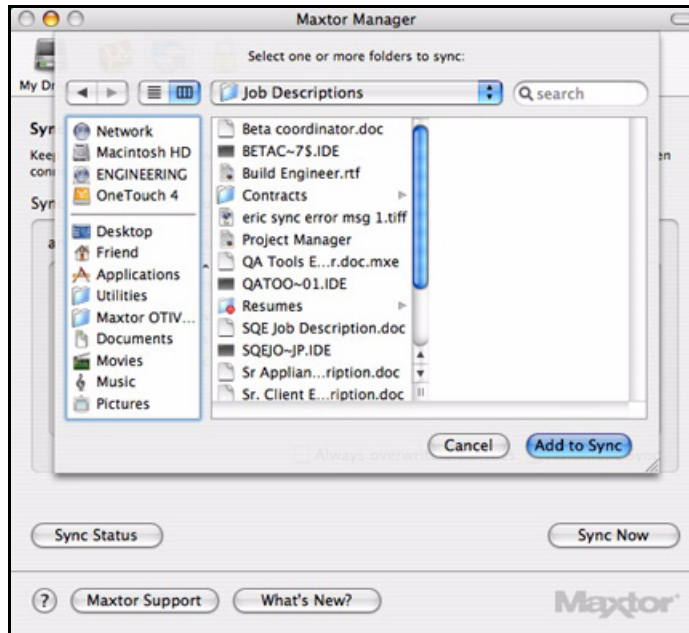


Figure 3: Select Folders to Sync

Step 5: Select folders to sync and click **Add to Sync**.

Step 6: The selected folders are listed in the **Sync** view:

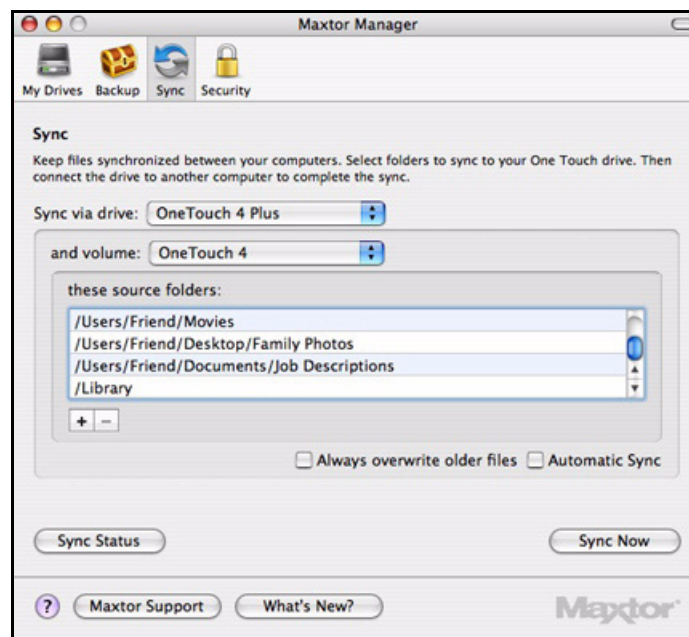


Figure 4: Custom Sync

Step 7: Check **Always overwrite older files** to automatically save the most recent versions of files in synchronized folders.

— OR —

Leave **Always overwrite older files** unchecked if you want to be asked which version of a file in a synchronized folder to save.

Step 8: Check **Automatic Sync** to sync automatically each time a file changes.

— OR —

Leave **Automatic Sync** unchecked to sync manually using the **Sync Now** button.

Completing the Sync

To complete the Sync, you must remove your OneTouch drive from the computer on which the original Sync occurred and connect it to another computer on which you want to sync the selected folders. You can connect the OneTouch drive to as many computers as you wish to include in the Sync.

The first time you connect your OneTouch to a second computer to complete a Sync, you're asked where to put the synchronized folders on this computer.

To complete the Sync,

Step 1: Safely remove the OneTouch drive from your computer.

Step 2: Connect the OneTouch drive to another computer.

The **Sync** window opens:

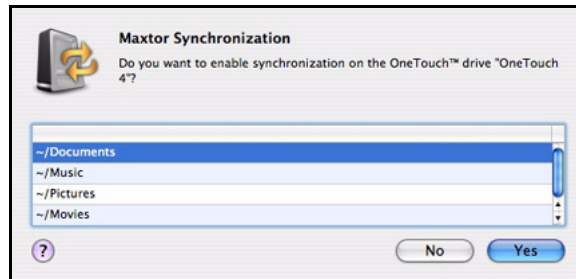


Figure 5: Enable Sync

Step 3: Click **Yes** to enable Sync.

From now on, the selected folders will automatically sync with the versions on your OneTouch drive each time you connect the drive to the computer.

Removing Folders from Sync

To remove folders you no longer want to sync,

Step 1: Click **Sync** in the toolbar.

The **Sync** view is displayed:

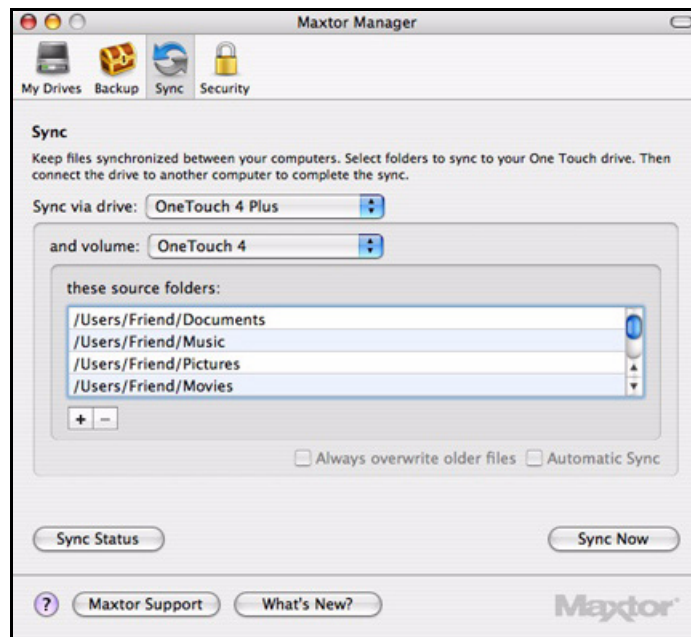


Figure 6: Sync - Populated

Step 2: Select the folder to be removed from sync.

Step 3: Click **-**.

The folder is removed from the list of synchronized folders.

Checking Sync Status

To check the status of the folders you've selected for sync,

- Click **Sync Status**.

A Sync Status sheet displays recent activity:

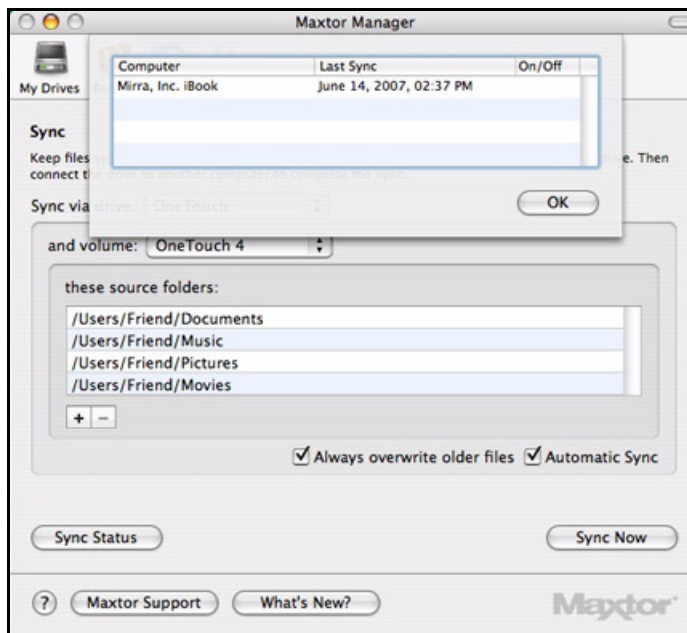


Figure 7: Sync Status

Using Automatic Sync

The Automatic Sync feature continuously tracks file changes in synchronized folders and automatically synchronizes revised versions by overwriting older versions with newer versions. Your OneTouch drive must be connected during Automatic Sync.

By default, Automatic Sync is turned off.

Turning Off Automatic Sync

You can turn off Automatic Sync and control when files are synchronized rather than synchronizing files automatically.

To turn off Automatic Sync,

Step 1: Click **Sync** in the toolbar.

The **Sync** view opens:

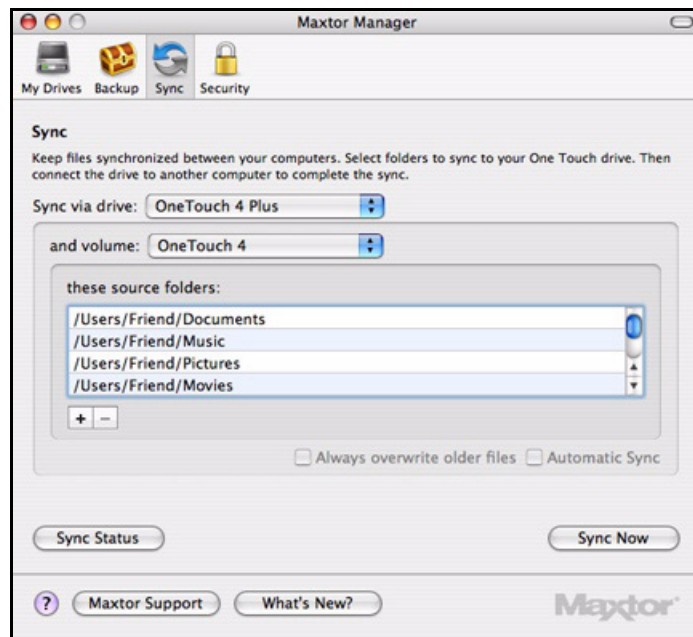


Figure 8: Sync

Step 2: Uncheck **Automatic Sync**.

Step 3: To sync manually when Automatic Sync is off,

- Click **Sync Now** in the lower right corner of the **Sync** window.
- OR —
- Press the OneTouch button if you've customized it to sync files.

Synchronizing Manually

To sync selected folders immediately,

- Click **Sync Now**.

Using the Maxtor Synchronization Window

Use the **Maxtor Synchronization** window to manage your synchronized files:

- Decide whether to overwrite existing file versions.
- Add or delete files.
- Resolve conflicts over which version of a synchronized file to save.

If the same file is edited on different computers at the same time, a conflict occurs over which version of the file to save. When the OneTouch drive containing a changed version of a file is connected to a computer containing another changed version of the same file, the **Maxtor Synchronization** window opens:

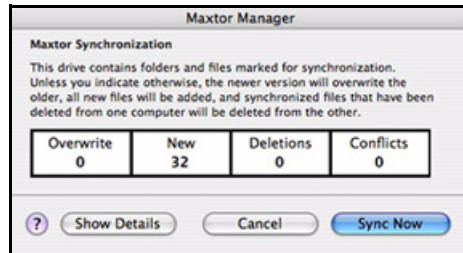


Figure 9: Maxtor Synchronization

To expand and use the **Maxtor Synchronization** window,

Step 1: Click **Show Details**.

The **Maxtor Synchronization** window expands:

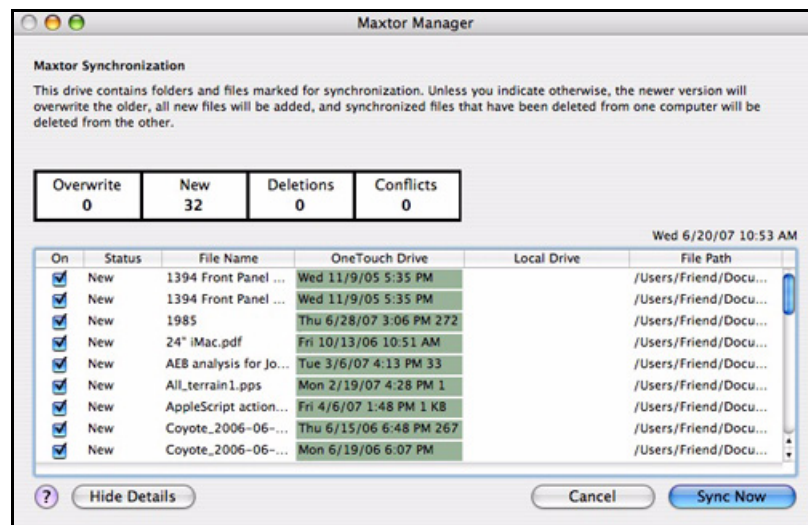


Figure 10: Maxtor Synchronization Expanded

Step 2: Use the **On** checkbox to tell Maxtor Manager which file versions to overwrite, add, or delete.

Step 3: Click **Sync Now** to complete the sync.

The **Maxtor Synchronization** window informs you of the progress of the sync and closes when the sync is complete:

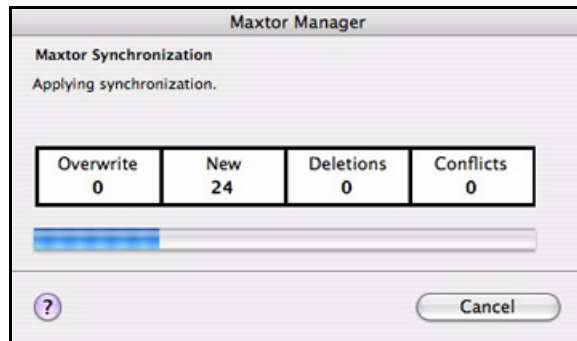


Figure 11: Maxtor Synchronization in Progress

Using Automatic Overwrite

When Automatic Overwrite is on, older file versions are always replaced with newer versions.

When Automatic Overwrite is off, the Maxtor Manager displays the **Maxtor Synchronization** window to allow you to decide whether to overwrite an older file version with a new version:

Managing Security

Using DrivePass

DrivePass allows you to password-protect an entire OneTouch drive.

Enabling DrivePass

To enable DrivePass,

Step 1: Click **Security** in the toolbar.

The **Security** view is displayed:



Figure 1: Security

Step 2: Select a OneTouch drive from the dropdown menu.

Step 3: Click **Enable DrivePass**.

The **Enable DrivePass** sheet opens:

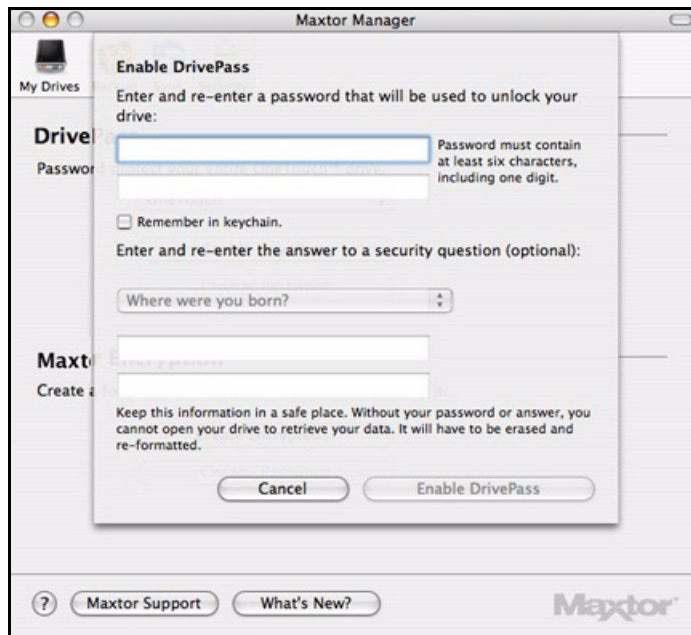


Figure 2: Enable DrivePass

Step 4: Enter and re-enter a password that will unlock your OneTouch drive.

Your password must contain at least six characters, including one digit. Be sure to use a password you'll remember; you'll need it each time you want to unlock your drive.

Note: You can select **Remember in keychain** to make sure you don't forget the password.

Step 5: If you wish, select a security question from the dropdown menu and then enter and re-enter the answer to that question.

You can use the answer to the security question to unlock your drive if you forget your password.

Step 6: Click **Enable DrivePass**.

The **Security** view now reflects your DrivePass status and offers the options of removing DrivePass and changing your DrivePass password:



Figure 3: DrivePass Enabled

Unlocking Your OneTouch Drive

Once you enable DrivePass, your OneTouch drive locks automatically each time you shut down your computer or remove the OneTouch drive. You must unlock the drive each time you restart your computer or reconnect your drive. You can unlock your drive in either the Maxtor Manager password window or the OneTouch application

If you selected **Remember in keychain** when you set your password, your drive unlocks automatically.

If you did not select **Remember in keychain** when you set your password, a Maxtor Manager password window opens when you restart your computer or reconnect your drive:



Figure 4: Drive Locked

To unlock your drive in the Maxtor Manager password window,

Step 1: Select **Password** or your security question, if you've created one, from the dropdown menu:



Figure 5: Drive Locked - Options

Step 2: Enter the password or the answer to the security question.

Step 3: Click **Unlock**.

Step 4: Click the desktop Maxtor Manager icon to open the Maxtor Manager application:



To unlock your drive in the OneTouch application,

Step 1: Click **My Drives** in the toolbar.

The **My Drives** view opens:

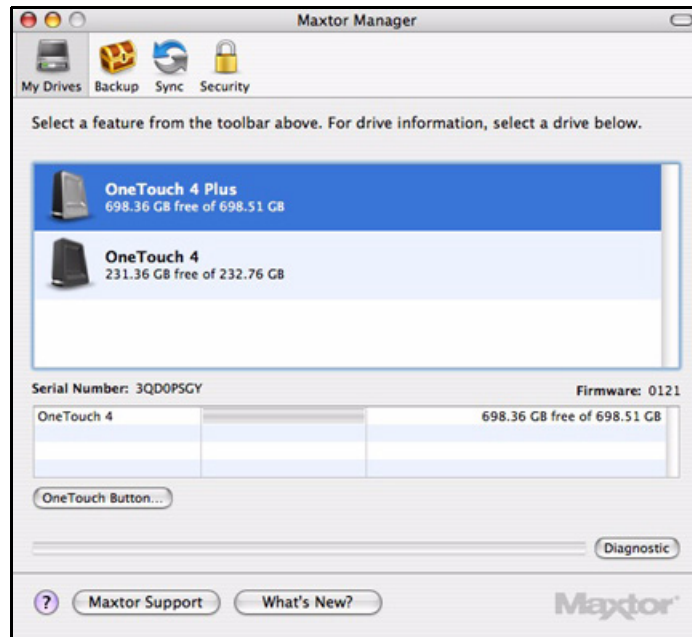


Figure 6: My Drives

Step 2: Click **Security** in the toolbar.

The **Security** view is displayed:



Figure 7: Unlock Drive

Step 3: Click **Unlock Drive**.

The **Unlock your drive** sheet is displayed:



Figure 8: Unlock Your Drive

Step 4: Enter your password and click **Unlock**.

The **Security** view indicates that your drive is unlocked:

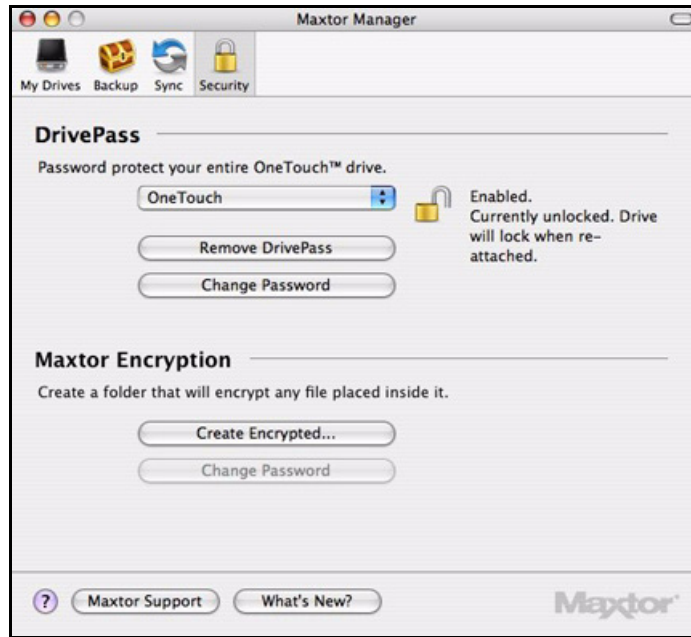


Figure 9: Security

Removing DrivePass

To remove DrivePass from your OneTouch,

Step 1: Click **Remove DrivePass** in the **Security** view.

The **Remove DrivePass** sheet is displayed:



Figure 10: Remove DrivePass

Step 2: Enter the password and click **Remove DrivePass**.

The **Security** view now indicates that DrivePass is not enabled:



Figure 11: Security

Changing Your DrivePass Password

To change your DrivePass password,

Step 1: Click **Change Password** in the **Security** view.

The **Change DrivePass Password** sheet is displayed:



Figure 12: *Change DrivePass Password*

Step 2: Enter your current password and enter and re-enter the new password.

Step 3: If you wish, enter and re-enter the answer to a security question.

Step 4: Click **Change**.

A Changed DrivePass Password confirmation sheet is displayed:

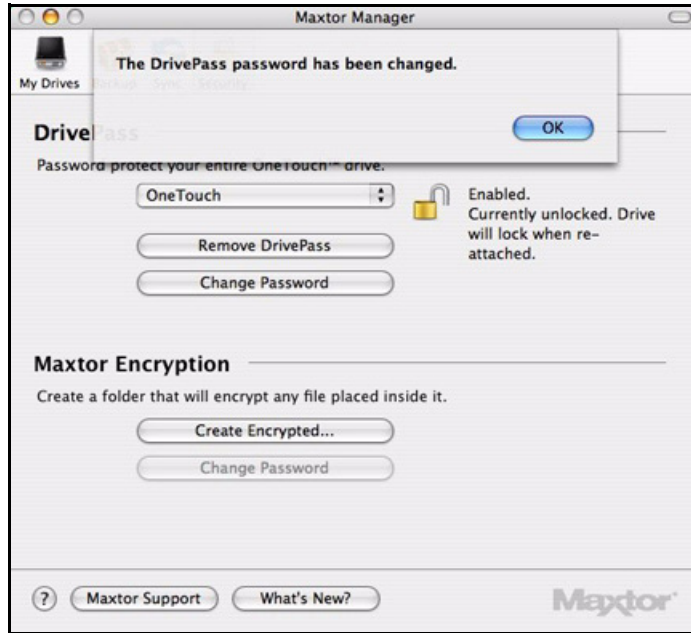


Figure 13: Change DrivePass Password Confirmation

Step 5: Click **OK**.

If You Forget Your Password...

If you forget your password and are unable to unlock your drive, you must reformat the drive in order to continue to use it. Reformatting erases all data stored on the drive.

To securely erase your drive,

Step 1: Click **I Forgot** in either the Maxtor Manager password window



or the **Unlock your drive** sheet:



The **Secure Erase** sheet opens:

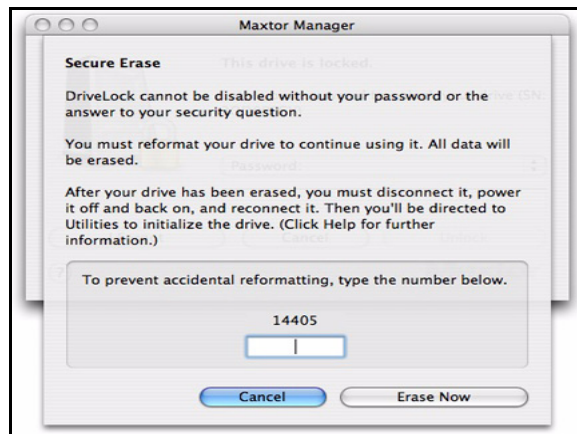


Figure 14: Secure Erase

Step 2: Enter the number displayed and click **Erase Now**.

The light on your OneTouch drive begins to blink and continues until the reformat is complete. The reformat can take several hours, depending upon the size of your OneTouch drive.

Note: When the reformat has finished, you must disconnect and then reconnect the power and interface cables to the drive. Otherwise, the DrivePass information remains intact and your drive is still locked.

When the reformat is complete, a **Disk Insertion** dialog is displayed

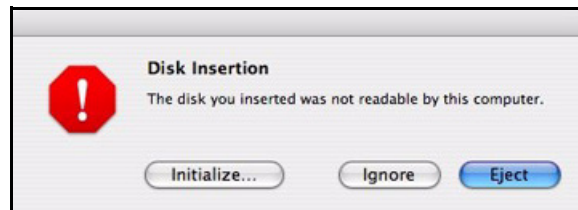


Figure 15: Disk Insertion

Step 3: Click **Initialize** to prepare your OneTouch for use.

The **Disk Utility** window opens:

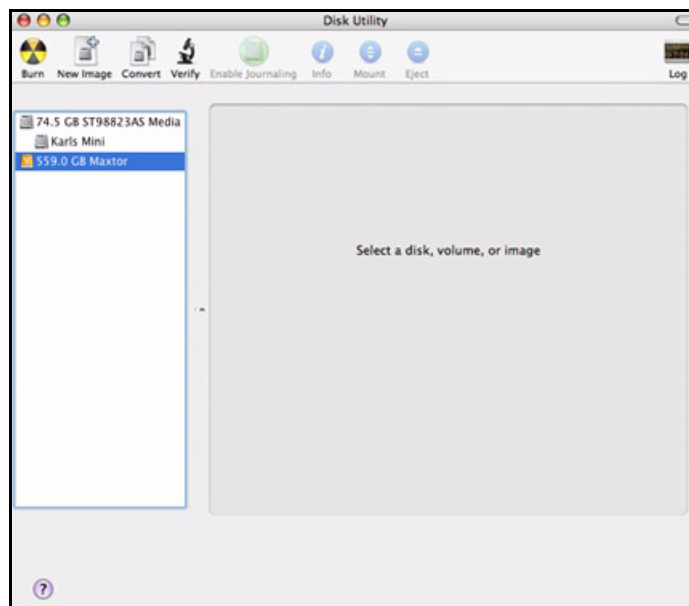


Figure 16: Disk Utility

Step 4: Select the Maxtor drive from the list:

The **First Aid** tab is displayed:

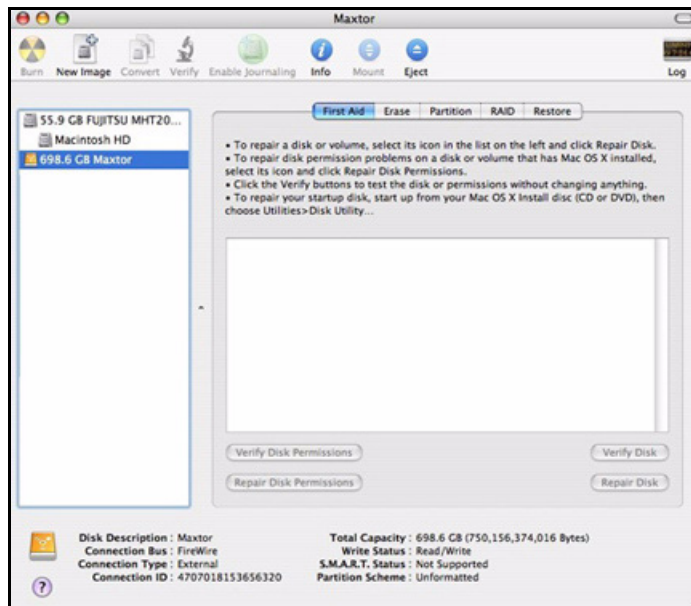


Figure 17: Disk Utility

Step 5: Click the **Erase** tab:

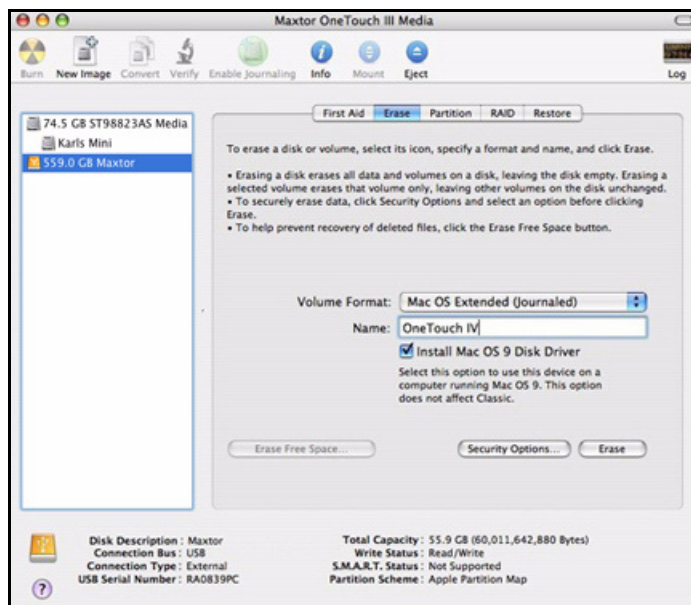


Figure 18: Disk Utility Erase

Step 6: Enter this information:

- For **Volume Format**, select **Mac OS Extended...**

Any of the **Mac OS Extended** options will work.

- For **Name**, enter the name you want to give your OneTouch 4 drive.
- Deselect **Install Mac OS 9 Disk Driver**.

Step 7: Click **Erase**.

An **Erase Disk** sheet is displayed:

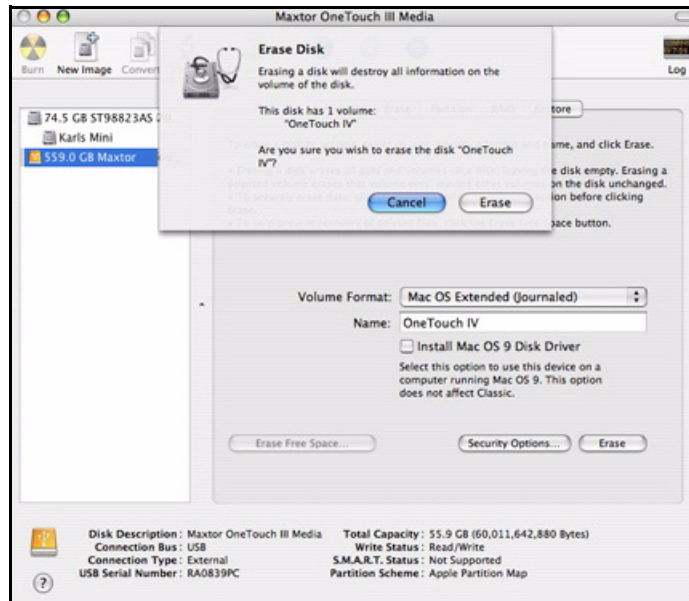


Figure 19: *Erase Disk Warning*

Step 8: Click **Erase** in the **Erase Disk** sheet.

Your OneTouch 4 drive is dismounted and then remounts with the name you entered.

Step 9: Close the Disk Utility.

Step 10: Click the Maxtor Manager desktop icon.

The **My Drives** view opens and your OneTouch drive is ready for use:

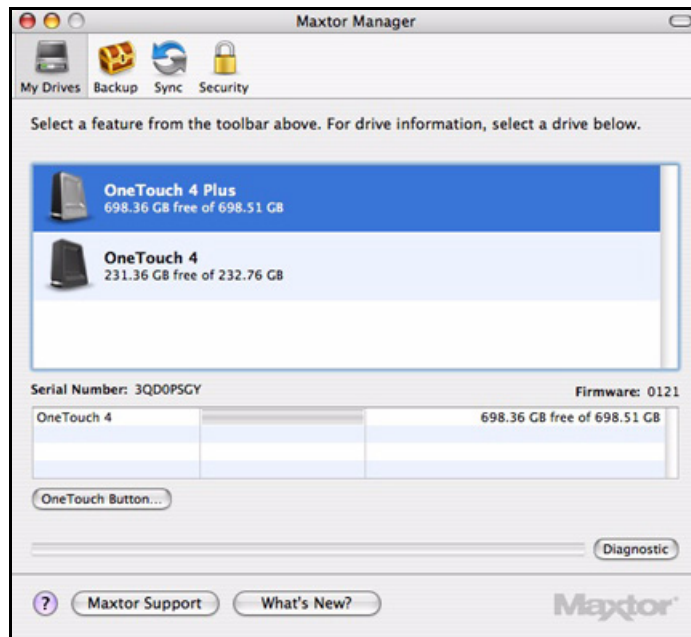


Figure 20: My Drives

Using Maxtor Encryption

Maxtor Encryption offers the encryption of multiple files and folders in one location, the Maxtor Encryption folder. After you create and set a password for the Encryption Folder, you can simply drag and drop files and folders into it to secure them.

These types of files and folders cannot be dragged into your encrypted folder:

- Already-encrypted files
- Installer packages
- Applications
- Development Tools

The Encryption operation is Copy only; no files are moved on your computer. Thus the original, unencrypted version of a file or folder remains on your computer. For total security, you should delete the unencrypted version.

If you leave an unencrypted version of a file or folder on your computer, when you decrypt the encrypted version, you're asked permission to overwrite the original unencrypted version from your computer.

Creating an Encrypted Folder

To create an encrypted folder,

Step 1: Click **Security** in the toolbar.

The **Security** view opens:

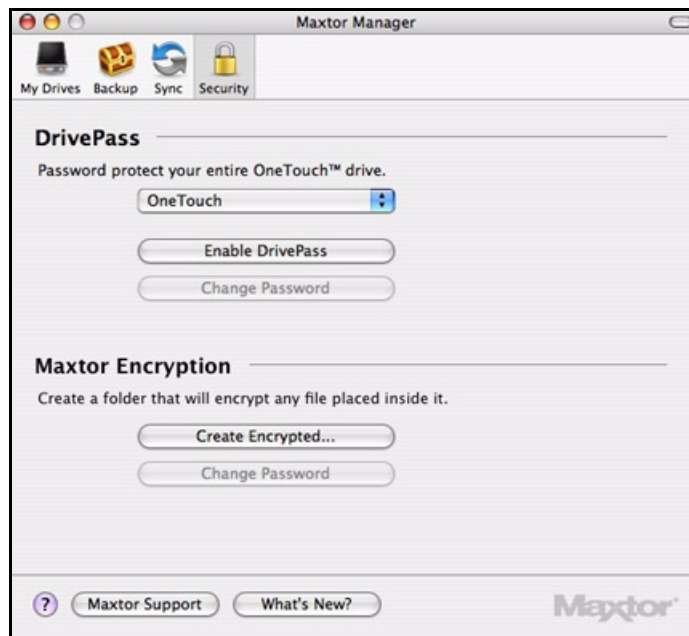


Figure 21: Security

Step 2: Under **Maxtor Encryption**, click **Create Encrypted Folder**.

A **Create Encrypted Folder** sheet is displayed:

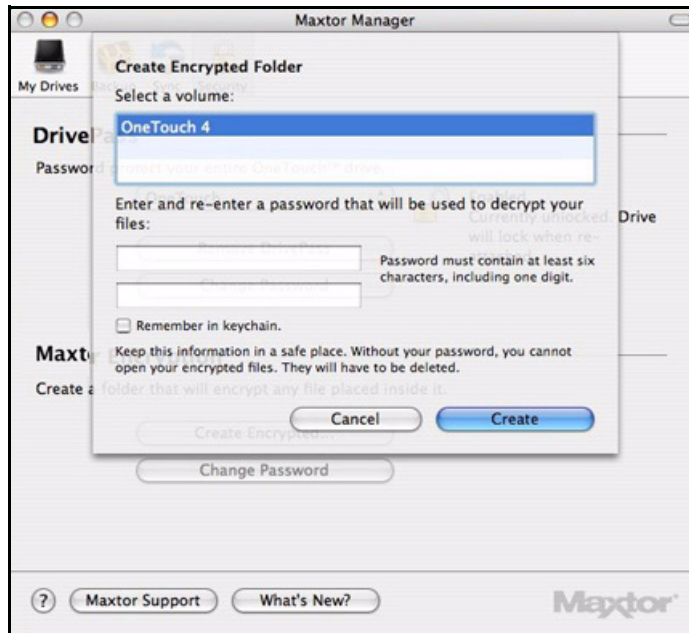


Figure 22: Create Encrypted Folder

Step 3: Select a OneTouch drive and enter and re-enter a password that will open your encrypted folder.

Your password must contain at least six characters, including one digit. Be sure to use a password you'll remember; you'll need it each time you want to access the files and folders stored in the encrypted folder.

Note: Your Encryption password is attached to the encrypted folder and not to the files and folders stored within it. You can select **Remember in keychain** to make sure you don't forget the password.

Step 4: Click **Create**.

The **Security** view reflects the creation of a **Maxtor Encrypted Folder**:



Figure 23: Encryption Folder Created

Encrypting Files and Folders

You can open your encrypted folder either from the Maxtor Manager **Security** view or by clicking the **OneTouch 4** icon on your desktop.

To use your encrypted folder,

Step 1: In the **Security** view, click **Open Encrypted Folder**



Figure 24: Security

— OR —

On your desktop, double-click the **OneTouch 4** icon:



The Finder window displays the **Encryption Folder.mxef** icon:

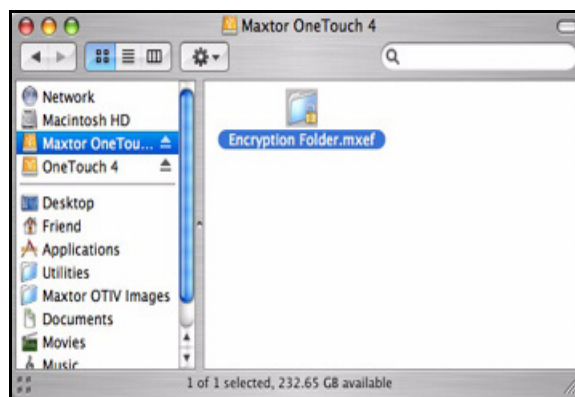


Figure 25: Encryption Folder

Step 2: Double-click the **Encryption Folder.mxef** icon.

The **Encryption Password** window opens:



Figure 26: Encryption Password

Step 3: Enter your password and click **Unlock**.

Note: Your Encryption password is attached to the encrypted folder and not to the files and folders stored within it. You can select **Remember in keychain** to make sure you don't forget the password.

The Maxtor Encryption window opens:

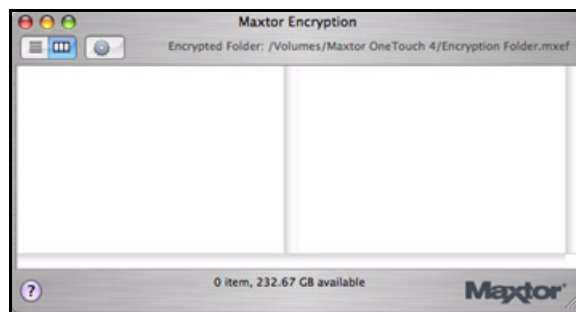


Figure 27: Maxtor Encryption Window

Step 4: Drag files and folders into your encrypted window to secure them:

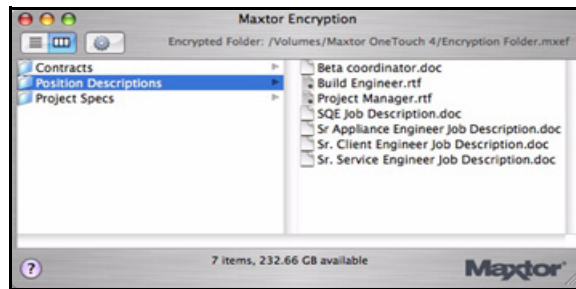


Figure 28: Maxtor Encryption Window Populated

Step 5: Delete the original, unencrypted versions of the files and folders from your computer.

Note: Your encrypted files and folders will not be completely secure unless you delete the original, unencrypted versions from your computer.

Managing the Encrypted Folder

You can move files and folders from your encrypted folder to another location on your computer or delete them from your encrypted folder.

To manage the files and folders in your encrypted folder,

Step 1: In the **Security** view, click **Open Encrypted Folder:**



Figure 29: Security

— OR —

On your desktop, double-click the **OneTouch 4** icon:



The Finder window opens:



Figure 30: Maxtor Encryption Folder

Step 2: Double-click the **Encryption Folder** icon.

The **Maxtor Encryption** password window opens:



Figure 31: Encryption Password

Step 3: Enter your password and click **Unlock**.

Note: Your Encryption password is attached to the encrypted folder and not to the files and folders stored within it. You can select **Remember in keychain** to make sure you don't forget the password.

The Maxtor Encryption window opens:

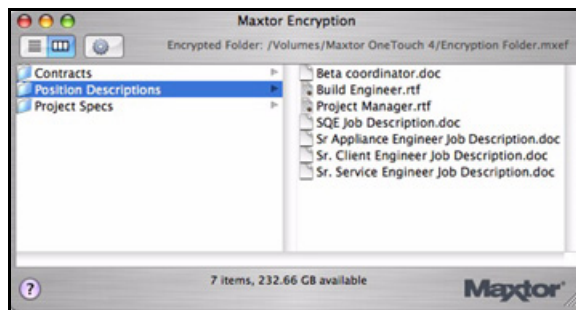


Figure 32: Maxtor Encryption Window Populated

Step 4: To move a file or folder from your encrypted folder, drag and drop it at the desired location on your computer.

Step 5: To delete a file or folder from your encrypted folder,

(a) Click on the desired item and press **Delete**.

— OR —

Drag and drop it in the Trash.

A Delete Warning sheet is displayed:

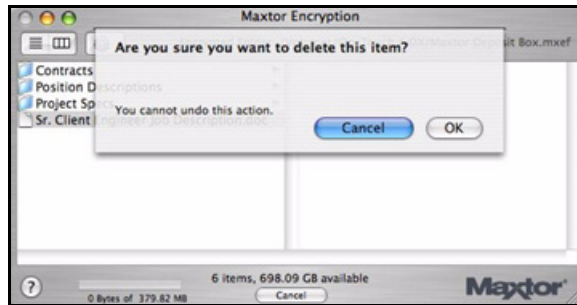


Figure 33: Delete Warning

(b) Click **OK**.

The item is deleted from the encrypted folder.

Deleting an Encrypted Folder

Warning: When you delete an encrypted folder, you also delete the data stored in it. To retain your data, be sure to remove files and folders from your encrypted folder before you delete the folder itself.

You can delete your encrypted folder from two locations, the **Security** view or the Finder window.

From the Security View...

To delete your encrypted folder from the **Security** view,

Step 1: Click **Security** in the toolbar.

The **Security** view is displayed:



Figure 34: Security

Step 2: Click **Delete Encrypted Folder**.

A **Delete Encrypted Folder** sheet is displayed:



Figure 35: Delete Encrypted Folder

Step 3: Enter your password and click **Delete Folder**.

A **Delete Encrypted Folder** warning sheet is displayed:



Figure 36: *Delete Encrypted Folder Warning*

Step 4: Click **Delete Now**.

The **Security** view indicates that Maxtor Encryption is not enabled:



Figure 37: Security - No Encrypted Folder

From the Finder Window...

To delete your encrypted folder from the Finder window,

Step 1: On your desktop, double-click the **OneTouch 4** icon:



The Finder window opens:

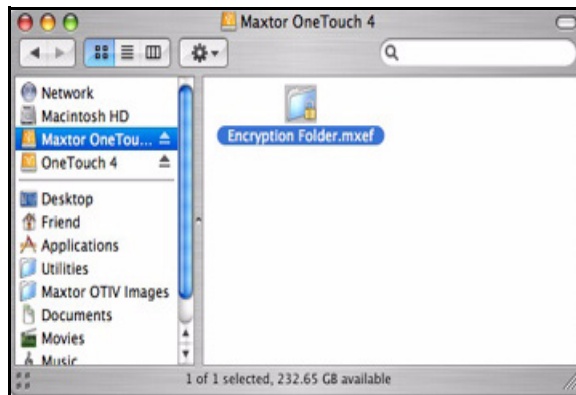


Figure 38: Maxtor Encrypted Folder

Step 2: Drag the **Encryption Folder.mxef** icon to the Trash.

Step 3: Empty the Trash.

Changing Your Encryption Password

You can change your Encryption password in either of two locations, the **Security** view or the Maxtor Encryption window.

From the Security View...

To change your Encryption password in the **Security** view,

Step 1: Click **Security** in the toolbar.

The **Security** view is displayed:



Figure 39: Security

Step 2: Under **Maxtor Encryption**, click **Change Password**.

A **Change Encryption Password** sheet is displayed:

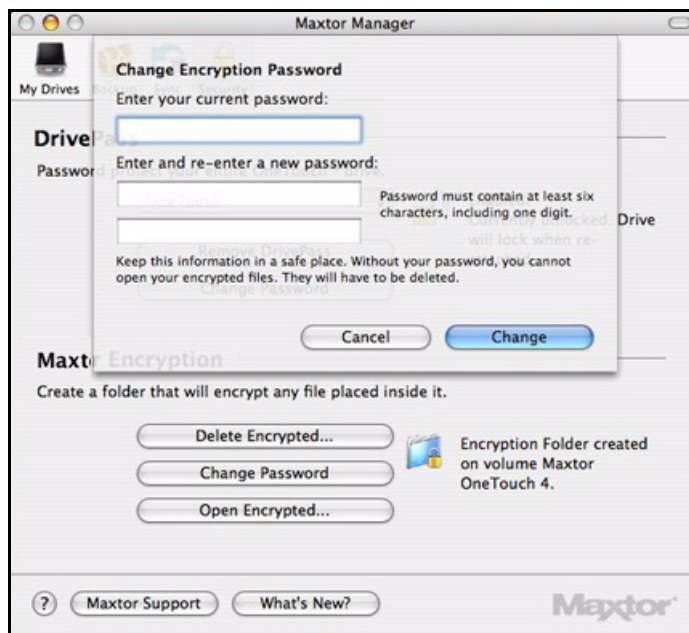


Figure 40: Change Encryption Password

Step 3: Enter your password and enter and re-enter the new password.

Step 4: Click **Change**.

A sheet confirms that your Encryption password has been changed:



Figure 41: *Changed Encryption Password Confirmation*

From the Maxtor Encryption Window...

To change your Encryption password from the Maxtor Encryption window,

Step 1: Open the Maxtor Encryption window:

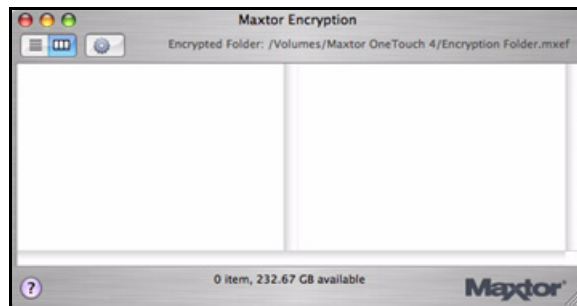


Figure 42: *Maxtor Encryption Window*

Step 2: Double-click the Change Password icon:



Figure 43: Change Password

The **Change Encryption Password** sheet is displayed:



Figure 44: Change Encryption Password

Step 3: Enter your password and enter and re-enter the new password.

Step 4: Click **Change**.

A sheet confirms that your encrypted folder password has been changed:



Figure 45: Changed Encrypted Password Confirmation

Frequently Asked Questions

These are common, frequently asked questions about the OneTouch 4. For further information, refer to the Seagate Knowledge Base at support.seagate.com.

1. What are the minimum Operating System requirements for the OneTouch 4?

Microsoft Windows:

- XP Professional, XP Home, XP Media Center Edition*
 - Vista Home Basic, Vista Home Premium, Vista Business, Vista Ultimate*
- * 32-bit Operating Systems only

Macintosh:

- Mac OSX 10.4.9 and newer

No other Operating System versions are supported. Although other Operating Systems may recognize the OneTouch 4 as an external storage device, the OneTouch 4 installation software will not work.

2. What do I do if my computer doesn't recognize my OneTouch 4?

It can take your computer up to two (2) minutes to recognize a OneTouch 4. If your computer does not see the drive after several minutes, try the following:

- Verify that power and interface cables are properly connected,
 - OneTouch 4 Mini Users:** Make sure to connect the interface cables in the following sequence:
 - 1 Power + Data
 - 2 Power Only
 - 3 Type B Interface directly to the OneTouch 4 Mini
- **Windows Users:** Make sure the OneTouch 4 drive is recognized in My Computer in XP (Computer in Vista), Disk Management, or Device Manager.
- **Macintosh Users:** Make sure the OneTouch 4 drive is mounted on the Apple Desktop and is recognized in the System Profiler.
- If you're connecting through an USB Hub, make sure it's a powered USB Hub.
- Did you set a DrivePass password on the OneTouch 4 and then move it to another computer? If so, the other computer cannot see the locked OneTouch 4. You must either install the Maxtor Manager on the other computer and unlock the drive or return the OneTouch 4 to the original system and disable DrivePass through the Maxtor Manager.

3. Can I back up my entire system using the OneTouch 4's Backup feature?

No. The Backup feature is designed to back up your data (documents, pictures, music, videos, etc.). The Backup feature cannot back up your entire computer. Windows OneTouch 4 Plus and OneTouch 4 Mini users can use SafetyDrill to back up their

computers. (SafetyDrill is not available on the Macintosh.) OneTouch 4 users can use a third-party or Operating System (Vista Business or Vista Ultimate) backup solution.

4. What types of files and folders cannot be backed up or synchronized using the Maxtor Manager's Backup and Sync features?

The Backup and Sync features cannot back up or sync these file and folder types:

- System Attributed Files/Folders (Operating System and/or Program files), including hidden files/folders.
- Personal Mail Files created with Outlook, Outlook Express, Windows Mail, and Macintosh Mail
- Financial Files/Data
- Other user data files/folders

The Maxtor Manager's Backup and Sync utilities are designed to back up or sync a single user's Windows XP or Mac OS X **Documents** folder or Vista **Personal User** folder.

5. Is there any way to recover a lost DrivePass or Maxtor Encryption password?

No. There is no way to recover a lost password.

- If you lose a DrivePass password, you must erase the OneTouch drive in order to use it again. Erasing the drive will erase all data stored on it.
- If you lose a Maxtor Encryption password, you must delete the encrypted folder. This will delete all data stored within the encrypted folder.

Seagate strongly recommends that you create passwords that are easily remembered or record passwords and store them in a secure location.

6. Can I use my OneTouch 4 without installing the software?

Yes. The OneTouch 4 can be used as an add-on, external storage device for storing data. However, if you wish to use the feature-rich utilities such as Backup, you must install the Maxtor Manager software included on your OneTouch 4 drive.

7. Can I use my OneTouch 4 with both Macintosh and Windows computers?

No. Windows and Macintosh File System formats do not play well together. Windows XP and Vista formats use the NTFS File System, while Macintosh uses the HFS+ File System.

Windows cannot see a drive prepared for use with a Mac. While Mac OS X can see a Windows-formatted drive, it cannot write files to it. So there's no safe way to use your OneTouch 4 drive with both Operating System platforms.

8. What's the simplest way to transfer files to my OneTouch 4?

Transfer files and folders to your OneTouch 4 using standard Windows/Macintosh Copy and Paste or Drag and Drop methods. Refer to either Windows or Apple Help files or Knowledge Bases for file transfer procedures.

9. The OneTouch 4 does not have a power switch. How do I disconnect the drive from my computer?

How you disconnect your OneTouch 4 from your system depends on your Operating System platform:

Windows:

- 1 Double-click the **Safely Remove Hardware** icon in the System Tray.
- 2 Select the OneTouch 4 from the list of devices and click **Stop** in both windows.
- 3 Disconnect your OneTouch 4 from your computer.

Macintosh:

- 1 Click and drag the volume associated with the OneTouch 4 to the Trash to eject the volume.
- 2 Disconnect your OneTouch 4 from your computer.

You can also disconnect the OneTouch 4 when your computer is shut down.

Note: *Never disconnect the OneTouch 4 drive while data is being transferred between the computer and the drive. Failure to properly disconnect the OneTouch 4 drive may result in data corruption or loss.*

10. What do I do if my OneTouch 4 software is lost or corrupted?

The OneTouch 4 installation software and utilities are pre-loaded on your drive. These files will be permanently lost if you delete them or reformat the drive. Seagate recommends that you copy all installation files to your local system before using the drive.

If the OneTouch 4 installation and utilities files are lost or corrupted, you can download new copies from the Seagate Website at www.seagate.com. On the website, click the **Download Center** link for all available downloads for your OneTouch 4.

Index

B

Backing Up & Restoring Folders 28

 Backing Up Manually 43

 Creating Backup Plans 28

 Managing Backup Plans 39

 Restoring Files 45

Backing Up Manually 43

C

Changing Your DrivePass Password 66

Changing Your Folder Encryption Password 85

 From the Maxtor Protector Window 87

 From the Security Window 85

Checking Sync Status 53

Completing the Sync 52

Creating a Custom Backup Plan 32

Creating an Encrypted Folder 73

Creating Backup Plans 28

 Creating a Custom Backup Plan 32

 Using Simple Backup 28

Customizing the OneTouch Button 14

D

Deleting an Encrypted Folder 81

 From the OneTouch 4 Folder 84

 From the Security Window... 81

Deleting Backup Plans 42

E

Editing Backup Settings 39

Enabling DrivePass 58

Encrypting Files and Folders 75

F

Frequently Asked Questions 89

G

Getting Started 1

 Installing the Software 8

Preparing the Software Manually *4*
Using the Formatting Tool *1*

I

If You Forget Your Password... *67*
Installing the Software *8*

M

Managing an Encrypted Folder *78*
Managing Backup Plans *39*
 Deleting Backup Plans *42*
 Editing Backup Settings *39*
Managing Security *58*
 Using DrivePass *58*
 Using Folder Encryption *72*
Managing Your Drives *14*
 Customizing the OneTouch Button *14*
 Running Diagnostics *17*
 Using RAID (OneTouch III Users) *18*

P

Preparing the Software Manually *4*

R

Removing DrivePass *64*
Removing Files from Sync *53*
Restoring Files *45*
Running Diagnostics *17*

S

Synchronizing Folders *48*
 Checking Sync Status *53*
 Completing the Sync *52*
 Removing Files from Sync *53*
 Synchronizing Manually *55*
 Using Custom Sync *49*
 Using Pre-configured Sync *48*
 Using the Maxtor Synchronization Window *55*
Synchronizing Manually *55*

T

Turning Off Automatic Sync *54*

U

Unlocking Your OneTouch Drive *60*

Updating Your Software	25
Using Automatic Overwrite	57
Using Automatic Sync	54
Turning Off Automatic Sync	54
Using Custom Sync	49
Using DrivePass	58
Changing Your DrivePass Password	66
Enabling DrivePass	58
If You Forget Your Password...	67
Removing DrivePass	64
Unlocking Your OneTouch Drive	60
Using Folder Encryption	72
Changing Your Folder Encryption Password	85
Creating an Encrypted Folder	73
Deleting an Encrypted Folder	81
Encrypting Files and Folders	75
Managing an Encrypted Folder	78
Using Pre-configured Sync	48
Using RAID (OneTouch III Users)	18
Using Simple Backup	28
Using the Formatting Tool	1
Using the Maxtor Synchronization Window	55
Using Automatic Overwrite	57