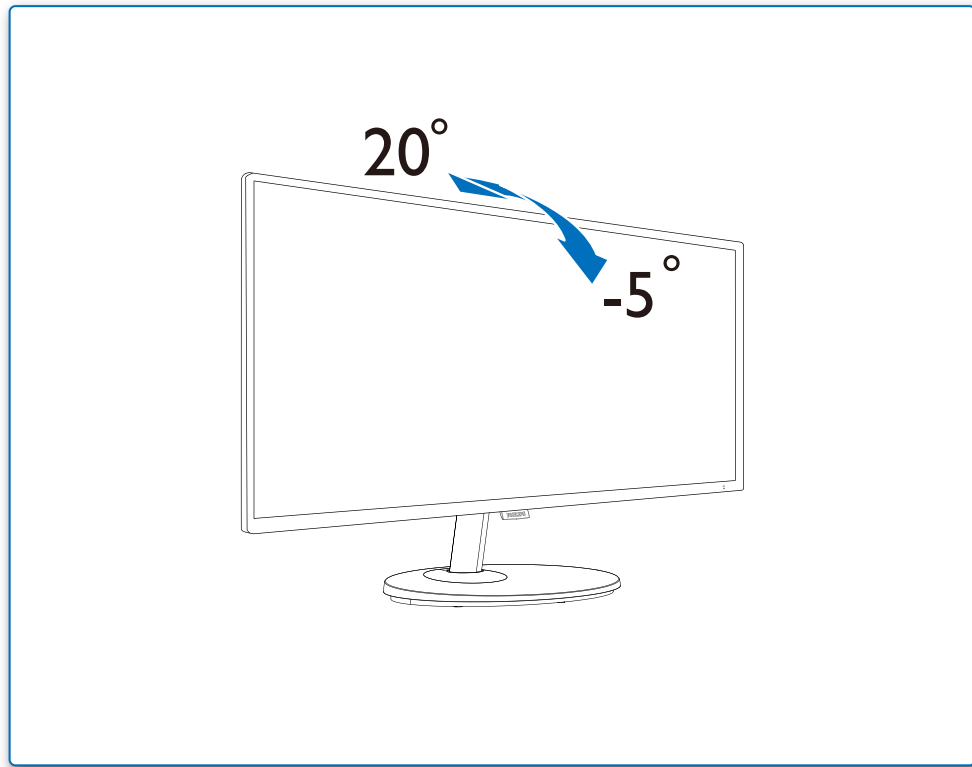


4



**PHILIPS**

**EN Need help?**  
Online help: [www.philips.com/support](http://www.philips.com/support)  
Go to above online help for the latest SmartControl software.

**FR Besoin d'Aide ?**  
Aide en ligne: [www.philips.com/support](http://www.philips.com/support)  
Rendez-vous sur l'assistance en ligne mentionnée ci-dessus pour obtenir le logiciel SmartControl le plus récent.

**ES ¿Necesita ayuda?**  
Ayuda en línea: [www.philips.com/support](http://www.philips.com/support)  
Vaya a la ayuda en línea de arriba para obtener el software SmartControl más actualizado.

**DE Benötigen Sie Hilfe?**  
Online-Hilfe: [www.philips.com/support](http://www.philips.com/support)  
Rufen Sie für die aktuellste SmartControl-Software die obige Online-Hilfe auf.

**IT Avete bisogno di aiuto?**  
Guida in linea: [www.philips.com/support](http://www.philips.com/support)  
Accedere alla guida online di cui sopra per il software SmartControl più recente.

**BR Precisa ajuda?**  
Ajuda online: [www.philips.com/support](http://www.philips.com/support)  
Vá para a ajuda on-line acima para obter o software SmartControl mais recente.

**KO 도움이 필요하신가요?**  
온라인 도움말: [www.philips.com/support](http://www.philips.com/support)  
온라인 도움말의 최신 SmartControl 소프트웨어로 이동하십시오.

**SC 需要帮助?**  
在线帮助: [www.philips.com/support](http://www.philips.com/support)  
有关最新SmartControl软件, 请转到上面的线上帮助。

**UK Потребуйте допомоги!**  
Підтримка он-лайн: [www.philips.com/support](http://www.philips.com/support)  
Найновіше ПЗ SmartControl подано вище у "Допомога онлайн".

**RU Нужна помощь?**  
Интерактивная справка: [www.philips.com/support](http://www.philips.com/support)  
Воспользуйтесь приведенной выше интерактивной справкой к новейшему ПО SmartControl.

**TR Yardım ihtiyacınız var mı?**  
Online yardım: [www.philips.com/support](http://www.philips.com/support)  
En son SmartControl yazılımı için yukarıdaki çevrimiçi yardıma gidin.

**HI क्या सहायता की जरूरत है?**  
ऑनसाइन सहायता: [www.philips.com/support](http://www.philips.com/support)  
नवीनतम SmartControl सॉफ्टवेयर के लिए ऊपर बताए गए ऑनलाइन सहायता पर जाएं

**AR هل تريد المساعدة؟**  
[www.philips.com/support](http://www.philips.com/support)  
للمساعدة عبر الإنترنت: انتقل في التعليمات عبر الإنترنت أعلاه للحصول على أحدث إصدار من SmartControl برنامج

**JP ヘルプが必要ですか?**  
オンラインヘルプ: [www.philips.com/support](http://www.philips.com/support)  
最新のSmartControlソフトウェアについては、上記オンラインヘルプにアクセスしてください。

Version: M832\*EQ2WWT  
2019 © TOP Victory Investment Ltd. All rights reserved.

This product has been manufactured by and is sold under the responsibility of Top Victory Investments Ltd., and Top Victory Investments Ltd. is the warrantor in relation to this product. Philips and the Philips Shield Emblem are registered trademarks of Koninklijke Philips N.V. and are used under license.

**HDMI**  
HDMI trademark and related patents on technologies belong to their respective owners.

Printed in China

Specifications are subject to change without notice.

[www.philips.com](http://www.philips.com)

Q41G32M181364A

**PHILIPS**  
E line  
327E8



# Quick Start

Register your product and get support at [www.philips.com/welcome](http://www.philips.com/welcome)



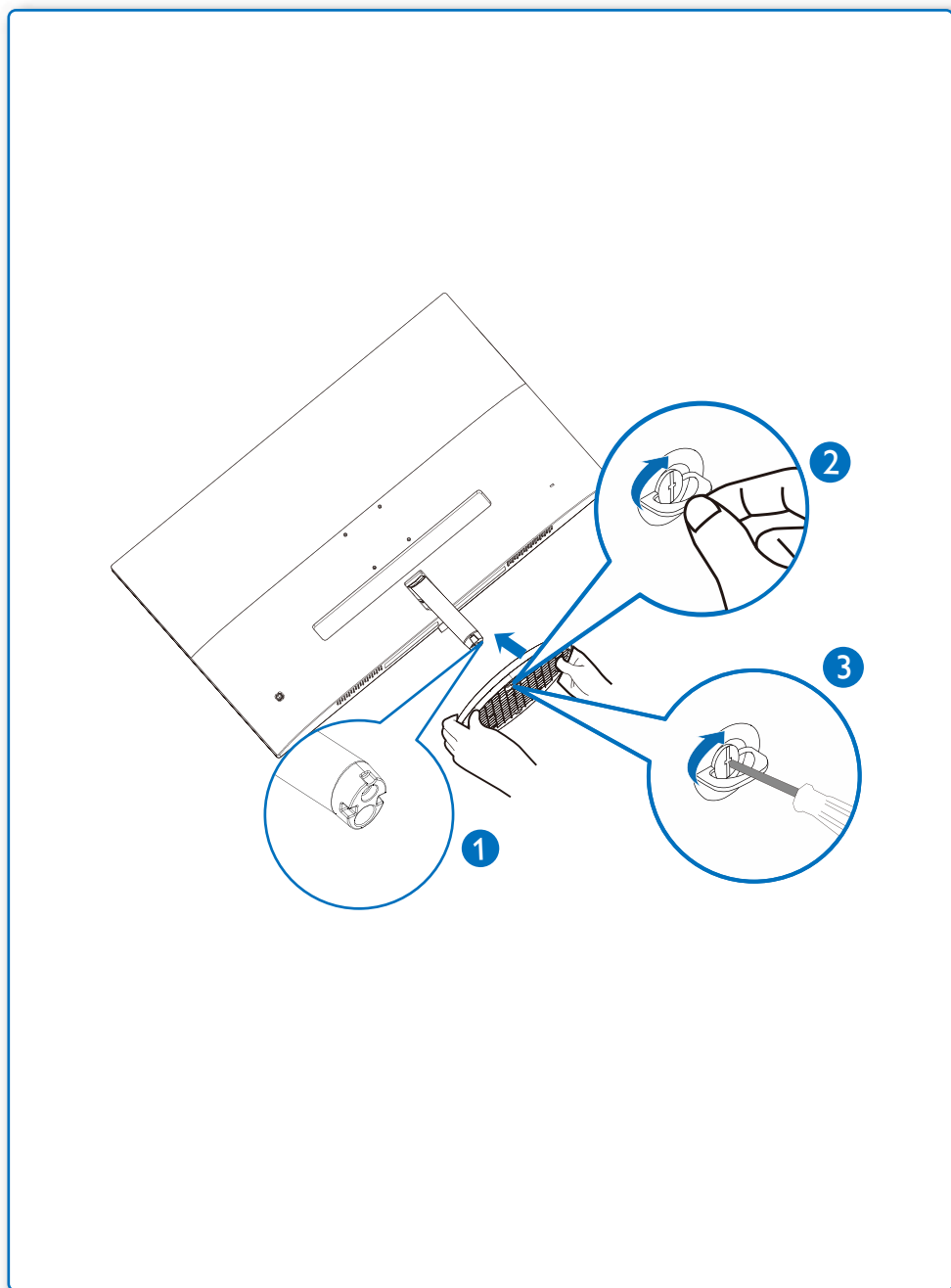
**Quick Start**

Power \*HDMI \*CD

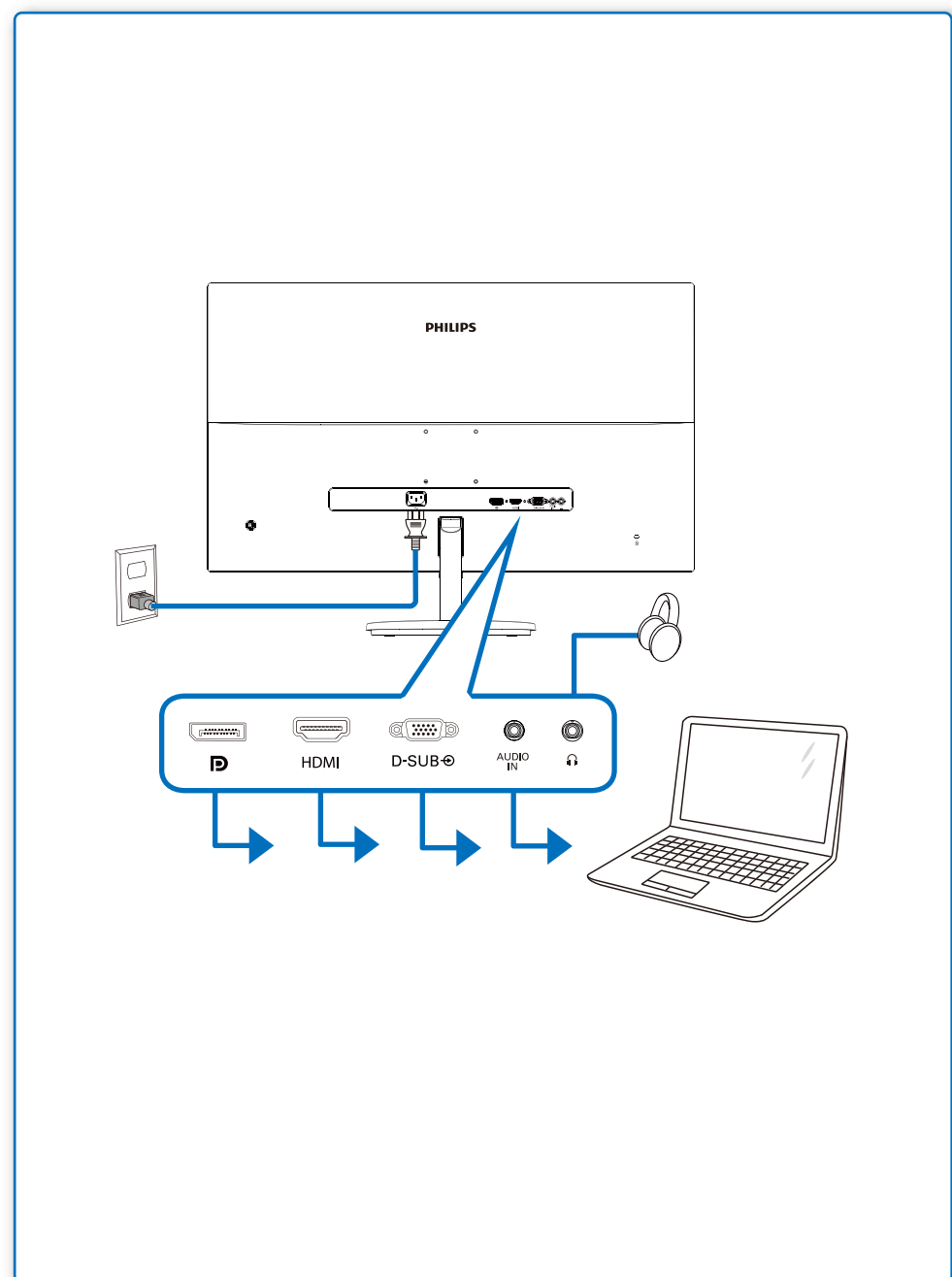
\*VGA \* Audio cable \* DP

\*Different according to region  
Display design may differ from that illustrated

1



2



3

Diagram showing the monitor with a hand pointing to the touch screen. Below it are icons for SmartImage, Input, and Volume.

SmartImage™  
FPS  
Racing  
RTS  
Gamer 1  
Gamer 2  
LowBlue Mode  
Off

Input  
VGA  
HDMI 1.4  
DisplayPort

Volume - + 80

Diagram showing the touch screen navigation through the OSD menu. Arrows indicate the sequence of touch gestures: Home, Up, Down, Right, Left.

LowBlue Mode On Off

Input On Off

Picture On Off

Audio On Off

Color On Off

Language On Off

Input On Off

Picture On Off

Audio On Off

Color On Off

Language On Off

Input On Off

Picture On Off

Audio On Off

Color On Off

Language On Off