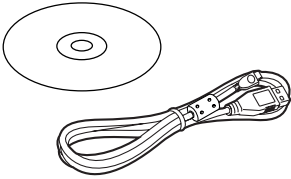


Panasonic[®]

Operating Instructions

USB Connection Kit



Before use, please read these instructions completely.

Before opening the CD-ROM package, please read the following.

End User License Agreement (for USB Driver, WebCam Driver, SD Viewer and DV STUDIO)

You ("Licensee") are granted a license for the Software defined in this End User Soft Agreement ("Agreement") on condition that you agree to the terms and conditions of this Agreement. If Licensee does not agree to the terms and conditions of this Agreement, promptly return the Software to Matsushita Electric Industrial Co., Ltd. ("Matsushita"), its distributors or dealers from which you made the purchase.

Article 1 License

Licensee is granted the right to use the software, including the information recorded or described on the CD-ROM, instruction manuals, and any other media provided to Licensee (collectively "Software"), but all applicable rights to patents, copyrights, trademarks and trade secrets in the Software are not transferred to Licensee.

Article 2 Use by a Third Party

Licensee may not use, copy, modify, transfer or allow any third party, whether free of charge or not, to use, copy or modify the Software, except as expressly provided for in this Agreement.

Article 3 Restrictions on Copying the Software

Licensee may make a single copy of the Software in whole or a part solely for back-up purpose.

Article 4 Computer

Licensee may use the Software only on one computer, and may not use it on more than one computer.

Article 5 Reverse Engineering, Decompiling or Disassembly

Licensee may not reverse engineer, decompile, or disassemble the Software, except to the extent either of them is permitted under law or regulation of the country where Licensee resides. Matsushita, or its distributors will not be responsible for any defects in the Software or damage to Licensee caused by Licensee's reverse engineering, decompiling, or disassembly of the Software.

Article 6 Indemnification

The Software is provided "AS-IS" without warranty of any kind, either expressed or implied, including, but not limited to, warranties of non-infringement, merchantability and/or fitness for a particular purpose. Further, Matsushita does not warrant that the operation of the Software will be uninterrupted or error free. Matsushita or any of its distributors will not be liable for any damage suffered by Licensee arising from or in connection with Licensee's use of the Software.

Article 7 Export Control

Licensee agrees not to export or re-export to any country the Software in any form without the appropriate export licenses under regulations of the country where Licensee resides, if necessary.

Article 8 Termination of License

The right granted to Licensee hereunder will be automatically terminated if Licensee contravenes of any of the terms and conditions of this Agreement. In the event, Licensee must destroy the Software and related documentation together with all the copies thereof at Licensee's own expense.

Before opening the CD-ROM package, please read the following.

G.726 Audio Decoder End User License Agreement

YOU SHOULD CAREFULLY READ THE FOLLOWING TERMS AND CONDITIONS. THIS IS A LEGAL DOCUMENT WHICH CONSTITUTES YOUR AGREEMENT AS END USER FOR THE USE OF THE SOFTWARE IN THAT PACKAGE. BY INSTALLING THIS SOFTWARE, YOU INDICATE YOUR ACCEPTANCE OF THIS LIMITED USE SOFTWARE LICENSE.

IF YOU DO NOT AGREE TO THE TERMS OF THIS AGREEMENT, PROMPTLY RETURN THE DISK PACKAGE AND THE ACCOMPANYING ITEMS WITH YOUR SALES RECEIPT TO YOUR VENDOR.

LIMITED USE SOFTWARE LICENSE

You, the Licensee, are granted a non-exclusive software license to use the Software and related documentation supplied herein. The terms of this license are as follows:

- 1) You may use the Software on a single computer at a single location.
- 2) As you, the Licensee, own the physical media on which the Software is recorded, the Licensor of the Software retains title and ownership thereof, regardless of the form or media in or on which the original and other copies may exist. This License is not a sale of the original Software or any copy thereof.
- 3) You are required to protect the copyright of the Software. You may NOT distribute or otherwise make the Software or documentation available to any third party without the prior written consent of the Licensor. You may be held legally responsible for any copyright infringement that is caused or encouraged by your failure to abide by the terms of this License.
- 4) You may NOT modify or alter the Software. Any portion of the Software that is merged into or used in conjunction with other software will continue to be the property of the Licensor and will be subject to the terms of this License.
- 5) You are permitted to copy the Software for exclusive use as your working copy. Any such copy must contain the same copyright notice and proprietary marking as the original Software.
- 6) You may not transfer or assign the Software or this License to any other person without the prior written consent of the Licensor. Any authorized transferee of the Software shall be bound by the same terms and conditions of this License and, in such case your license is automatically terminated. In no event may you transfer, assign, rent, sell, or otherwise dispose of the Software on a temporary or permanent basis except as expressly provided herein.
- 7) This License is effective until terminated. This License will terminate automatically without notice from the Licensor if you fail to comply with any provision of this Agreement. Upon termination you will destroy the Software together with all copies and modifications in any form.
- 8) The Software has been tested and the documentation has been reviewed. However, THE LICENSOR MAKES NO WARRANTY OR REPRESENTATION INCLUDING THE IMPLIED WARRANTIES OF MERCHANTABILITY AND FITNESS FOR USE, ALL OF WHICH ARE EXCLUDED. Some states do not allow exclusion of implied warranties so the above disclaimer may not apply to you.
- 9) The Licensor will not be liable or in any way responsible for any incidental or consequential economic or property damage in connection with the Software or its documentation. Some states do not allow the exclusion of incidental or consequential damages so the above exclusion may not apply to you.
- 10) (Notice to U.S. Government End Users) The Software and Documentation are "Commercial Items", as that term is defined at 48 C.F.R. 2.101, consisting of "Commercial Computer Software" and "Commercial Computer Software Documentation", as such terms are used in 48 C.F.R. 12.212 or 48 C.F.R. 227.7202, as applicable. Consistent with 48 C.F.R. 12.212 or 48 C.F.R. 227.7202-1 through 227.7202-4, as applicable, the Commercial Computer Software and Commercial Computer Software Documentation are being licensed to U.S. Government end users (A) only as Commercial Items and (B) with only those rights as are granted to all other end users pursuant to the terms and conditions herein.

Contents

Before Use

Introduction	5
Notes on these instructions	5
Names and functions of packaged items	6
Operating environment	7

■ WARNING:

To reduce the risk of fire or shock hazard, do not expose this equipment to rain or moisture.

■ CAUTION:

To reduce the risk of fire or shock hazard and annoying interference, use the recommended accessories only.

Install/Connection

Installing USB Driver.....	10
Installing WebCam Driver (Windows XP only).....	11
Installation of SD Viewer 1.1E-SE/DV STUDIO 3.1E-SE.....	12
Installation of ArcSoft Software Suite	13
Connecting the Movie Camera to Personal Computer	14

Software

Starting the Software	15
Installing G.726 Audio Decoder	16
Using the Movie Camera as a Web Camera (Windows XP only).....	17

Others

To disconnect USB cable safely.....	20
If you no longer need software or driver (Uninstall)	21
Notes	22

Before Use

Introduction

This USB Connection Kit lets you connect your personal computer to a Movie Camera that has a USB Terminal. You can use the kit to transfer still images from the video recorded with your Movie Camera to your personal computer.

By controlling the Movie Camera from the personal computer, the desired still pictures from tape or camera can be acquired into the personal computer.

Notes on these instructions

- Microsoft[®], Windows[®], Windows Messenger[®] and DirectX[®] are either registered trademarks or trademarks of Microsoft Corporation in the United States and/or other countries.
- Intel[®], Pentium[®] and Celeron[®] are the registered trademarks or trademarks of the Intel Corporation.
- All other names, company names, product names, etc. in these instructions are the trademarks or registered trademarks of their respective corporations.
- The names of the products you are using may differ from the names given in the text. Depending on the operating environment and other factors, the contents of the screens used in these instructions may not necessarily match what you will see on your screen.
- Although the screens in these Operating Instructions are shown in English for the sake of example, other languages are supported as well.
- In this Manual, the Panasonic make digital video camera with USB Terminal is referred to as Movie Camera.
- In this manual, connections between the personal computer and the Movie Camera NV-GS200 is referred as the example.
- These instructions do not cover the basic operations of the personal computer or define any terms. For this information, refer to the Operating Instructions which accompany your personal computer.

Names and functions of packaged items

1) USB Connection Cable:

- This Cable is used to connect a personal computer with your Movie Camera.

2) CD-ROM:

USB Driver (→ 10)

WebCam Driver (→ 11)

SD Viewer 1.1E-SE (→ 12)

DV STUDIO 3.1E-SE (→ 12)

G.726 Audio Decoder (→ 16)

ArcSoft Software Suite (→ 13)

Windows Media Update

- USB Driver enables you to use the USB Connection Cable. Make sure USB Driver is installed before connecting cable.
- If the Movie Camera is connected to your personal computer, you can send video from the Movie Camera to the other parties via the network. (The WebCam Driver can only be used on Windows XP SP1 or later.)
- The SD Viewer 1.1E-SE software allows images on a Card to be displayed in a thumbnail format so that the contents of the Card can be easily checked.
- Using the DV STUDIO 3.1E-SE software allows you to capture still images from the video recorded on a tape or still images viewed through the lens of a camera.
- G.726 Audio Decoder is used when a sound of MPEG4 moving picture file* recorded in ASF format is played back with Windows Media Player.
- The ArcSoft Software Suite is package software which is integrated by the ArcSoft PhotoImpression 4, ArcSoft Panorama Maker 3 and ArcSoft PhotoMontage 2 application software.
 - ArcSoft PhotoImpression 4 enables you to use photo editing program to edit, enhance, retouch or add special effects to any image easily. Also it offers creative solutions for making greeting cards and calendars.
 - ArcSoft Panorama Maker 3 allows you to create a panoramic photo combining several still images.
 - ArcSoft PhotoMontage 2 allows you to combine and process many still images to create a single image.
- Windows Media Update was provided by Microsoft Corporation. Run this update in cases where playback of an MPEG4 moving

picture file* recorded with a Digital Video Camera is started in Windows Media Player, but ends with an error message after 3 to 4 minutes.

*MPEG4 moving picture files can be recorded by NV-GS200.

Operating environment

- Despite having the operating environment indicated, it may not be possible to use the program with some types of personal computer.
- A CD-ROM drive is required to install this program.

USB Driver

OS:

IBM PC/AT compatible personal computer with pre-installed;

Microsoft Windows XP Home Edition/Professional

Microsoft Windows 2000 Professional

Microsoft Windows Me (Millennium Edition)

Microsoft Windows 98 Second Edition

CPU:

Intel Pentium II/ Celeron 300 MHz or higher (including compatible CPU)

RAM:

32 MB or more (64 MB or more recommended) (128 MB or more required for Windows XP)

Free hard disk space:

At least 30 MB or more

Ports:

USB Terminal

To use the Movie Camera as a Web Camera, the additional minimum requirements must be met.

OS:

Windows XP SP1 or later

Free hard disk space:

At least 250 MB or more

Graphic display:

High Colour (16 bit) or more

Desktop resolution of 800×600 pixels or more

Communication Speed:

56 kbps or faster is recommended

Necessary software:

Windows Messenger 5.0 or later

Other requirements (to send/receive audio):

Sound card

Speaker or headphones

To use the Movie Camera as a Web Camera, the following conditions must be met.

- In the case of Windows XP SP1 or later is needed, to upgrade Windows XP to SP1, click [Start] >> [All Programs] >> [Windows Update]. (Requires internet connection.)
- You have direct dial-up connection capability to the internet. Also, you and the other person(s) are in the same Network (LAN).
- Install the Windows Messenger 5.0 or later.
- If the installed version is not latest, update it by performing the Windows update.
- If you are connected to the Internet through a firewall or a router, proper communication will not be possible.
- The installer is available only in English but can be used on operating systems using other languages.
- The other parties also need to use Windows Messenger on Windows XP during the communication.

SD Viewer 1.1E-SE/DV STUDIO 3.1E-SE

OS:

IBM PC/AT compatible personal computer with pre-installed;

Microsoft Windows XP Home Edition/Professional

Microsoft Windows Me (Millennium Edition)

Microsoft Windows 98 Second Edition

CPU:

Intel Pentium II/ Celeron 300 MHz or higher (including compatible CPU)

Graphic display:

High Colour (16 bit) or more

Desktop resolution of 800×600 pixels or more

RAM:

32 MB or more (64 MB or more recommended)

(128 MB or more required for Windows XP)

Free hard disk space:

At least 20 MB (for SD Viewer 1.1E-SE)

At least 20 MB (for DV STUDIO 3.1E-SE)

Ports:

USB Terminal

Other requirements:

Mouse

- When 2 or more USB devices are connected to a personal computer, or when devices are connected through USB hubs or by using extension cables, proper operation is not guaranteed.
- When connected to the keyboard USB terminal, normal function may not be possible.
- This instruction manual describes only the procedures for installation, connection and start-up. Please read the PDF-based instructions for how to use the SD Viewer 1.1E-SE or the DV STUDIO 3.1E-SE.
- To view the installed operating instructions, Adobe Acrobat Reader 5.0 or higher is required. Please install Adobe Acrobat Reader from the supplied CD-ROM.
- Before using for the first time, select [Readme] from [Start] >> [All Programs (Programs)] >> [Panasonic] >> [SD Viewer] or [DV Studio3], and read any supplementary details or updates.
- The software is available in English, German and French.

G.726 Audio Decoder

OS:

Microsoft Windows XP Home Edition/Professional

Microsoft Windows 2000 Professional

Microsoft Windows Me (Millennium Edition)

Microsoft Windows 98 Second Edition

Also, the following software must be correctly installed.

DirectX 6 or later (Runtime)

DirectX Media 6 Runtime

Windows Media Player 6.1 or later

Graphic display:

High Colour (16 bit) or more

Desktop resolution of 800×600 pixels or more

RAM:

32 MB or more

Free hard disk space:

At least 16 MB

- The installer is available only in English but can be used on operating systems using other languages.

ArcSoft Software Suite

OS:

IBM PC/AT compatible personal computer;
Microsoft Windows XP Home Edition/Professional
Microsoft Windows 2000 Professional
Microsoft Windows Me (Millennium Edition)
Microsoft Windows 98 Second Edition

CPU:

Intel Pentium II 300 MHz or higher

Graphic display:

High Colour (16 bit) or more
Desktop resolution of 800×600 pixels or more

RAM:

64 MB or more (128 MB or more recommended)

Free hard disk space:

At least 425 MB

Other requirements:

Mouse

- This instruction manual describes only the procedures for installation, connection and start-up. Please read the Help messages of your software for how to use the ArcSoft Software Suite.
- The software is available in English, German, French, Italian, Spanish and Chinese.

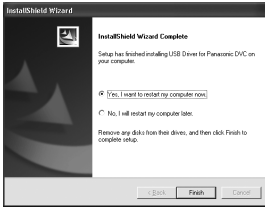
For any information about ArcSoft Software Suite, please contact the following Web site.

URL <http://www.arcsoft.com/>

3



5



Install/Connection

Installing USB Driver

Please install USB Device Driver first before connecting the Movie Camera to your Personal Computer with the USB Connection Cable.

- 1 **Turn on the Personal Computer and start up Windows.**
 - 2 **Insert the supplied CD-ROM into the personal computer's CD-ROM drive.**
 - Quit all applications.
 - The [Setup Menu] Screen appears.
 - 3 **Click [USB Driver].**
 - The set up program starts running.
 - 4 **Finish installation by following the on-screen instructions.**
 - Click [Next] and proceed with installation.
 - After completing the installation, Click [Finish].
 - 5 **Click [Finish] when the [Restarting Windows] Dialogue appears.**
 - Reboot the computer to finish installing USB driver.
 - Installation continues after the computer reboots if you selected additional software.
- A message indicating a conflict between versions may be displayed during the installation. This will not cause a problem. Simply click [Yes] to proceed with the installation.
 - Depending on the OS version, illustrations and icon names may vary.

2



3



Installing WebCam Driver (Windows XP only)

To upgrade Windows XP to SP1, select [Start] >> [Windows Update].

(The computer needs to be connected to the Internet.)

Applications which are compatible with older version of DirectX may not operate properly by installing DirectX 9.0.

1 Insert the supplied CD-ROM into the personal computer's CD-ROM drive.

- Quit all applications.
- The [Setup Menu] screen appears.

2 Click [WebCam Driver].

- The set up program starts running.
- When using an OS except for Windows XP SP1 or later, the warning indication is displayed and the WebCam Driver can't be installed.

3 You may be required to install DirectX 9.0 depending on the environment of the personal computer. In this case, click [Yes] to install it.

- Reboot the computer after DirectX is installed.
- Do not take out the CD-ROM.

4 Finish installation by following the on-screen instructions.

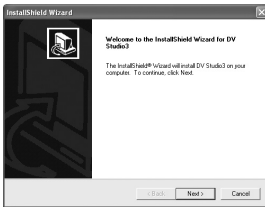
- Click [Next] and proceed with installation.
- After completing the installation, Click [Finish].

5 Click [OK].

2



3



4



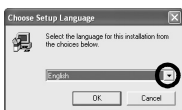
Installation of SD Viewer 1.1E-SE/ DV STUDIO 3.1E-SE

- 1 Insert the supplied CD-ROM into the personal computer's CD-ROM drive.
- 2 Click [SD Viewer 1.1E-SE] or [DV STUDIO 3.1E-SE].
- 3 Click [Next].
 - After reading the displayed contents, please carry out the installation according to instructions.
- 4 After the completion of setup, click on [Finish].
 - Installation will be completed.
 - Sample data is installed concurrently with the DV STUDIO 3.1E-SE software.

2



3



4



Installation of ArcSoft Software Suite

- 1 Insert the supplied CD-ROM into the personal computer's CD-ROM drive.
- 2 Click [ArcSoft Software Suite].
- 3 Select the desired language on the [Choose Setup Language] dialogue, and click [OK].
 - Installation begins.
 - After reading the displayed contents, please carry out the installation according to instructions.
 - If a language other than the OS language is selected, the characters may not be presented correctly.
- 4 When the component selection screen is displayed, check the software to be installed and click [Next].
- 5 After the completion of setup, click on [Finish].
 - Installation will be completed.

Connecting the Movie Camera to Personal Computer

Install USB Driver before connecting.

Never connect the USB Connecting Cable until the USB Driver is installed.

When using the Movie Camera as a Web Camera, please refer to page 17.

For Using SD Viewer 1.1E-SE

- 1 Insert the Memory Card into the Movie Camera.
- 2 Set the Movie Camera to PC Accessing Mode.
- 3 Connect the Movie Camera to Personal Computer with auxiliary USB Connection Cable.
 - It enters PC Accessing Mode.
- 4 Start SD Viewer 1.1E-SE. (→ 15)

For Using DV STUDIO 3.1E-SE

- 1 Set the Movie Camera to Tape Recording Mode or Tape Playback Mode.
 - If you wish to capture data from a tape, set the Movie Camera to Tape Playback Mode and insert the tape.
- 2 Set [CAMERA] or [PLAYBACK] >> [USB FUNCTION] >> [DV STUDIO].
- 3 Connect the Movie Camera to Personal Computer with auxiliary USB Connection Cable.
- 4 Start DV STUDIO 3.1E-SE. (→ 15)

- 1) Movie Camera
- 2) USB Connection Cable
- 3) USB terminal
- 4) Personal computer (not supplied)

• To copy the data from the memory card to a personal computer using Explorer, etc. instead of SD Viewer 1.1E-SE, set the Movie Camera to PC Accessing Mode and insert the card.

• When using the USB Connection Kit, use of the AC Adaptor is recommended for the power supply of the Movie Camera.



Software

Starting the Software

■ To start SD Viewer 1.1E-SE

- 1 Select [Start] >> [All Programs (Programs)] >> [Panasonic] >> [SD Viewer] >> [SD Viewer].

- If a Memory Card is already loaded, images on the Memory Card are displayed. (If a Card is not inserted, a message is displayed. Click [OK] to start the software.)

■ To start DV STUDIO 3.1E-SE

- 1 Select [Start] >> [All Programs (Programs)] >> [Panasonic] >> [DV Studio3] >> [DV Studio3].

- If a short-cut icon has been created on the desktop during installation, it is also possible to start by double-clicking on the icon.
- Please read the PDF-based instructions for how to use it. (→ 8)

■ To start software in the ArcSoft Software Suite

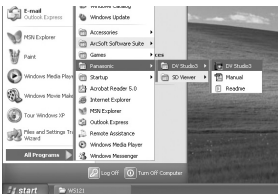
- 1 Select [Start] >> [All Programs (Programs)] >> [ArcSoft Software Suite] >> [Panorama Maker 3] (or [PhotoImpression 4] or [PhotoMontage 2]).

- To refer to the HELP, click on the [?] on the screen.

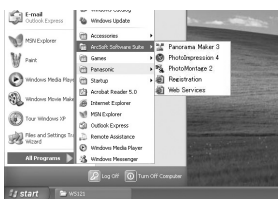
1



1



1



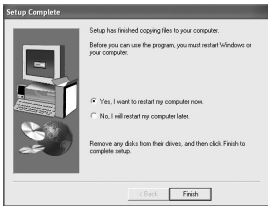
2



3



4



Installing G.726 Audio Decoder

G.726 Audio Decoder is needed to playback MPEG4 moving picture files* (ASF files). Install it from enclosed CD-ROM or download from Internet. If connected to Internet, G.726 Audio Decoder is automatically downloaded by clicking MPEG4 moving picture file* when not installed.

*MPEG4 moving picture files can be recorded by NV-GS200.

- 1 **Insert the supplied CD-ROM into the personal computer's CD-ROM drive.**
- 2 **Click [G.726 Audio Decoder].**
 - The set up program starts up.
 - Quit all Windows applications.
- 3 **Install it by following the screen.**
 - Carefully read the license agreement on the [Software License Agreement] window, and if you agree click [Yes]. Software is not installed if [No] is clicked.
- 4 **Click [Finish] when the [Setup Complete] Dialogue appears.**
 - Finish installing G.726 Audio Decoder by rebooting the computer.

Using the Movie Camera as a Web Camera (Windows XP only)

If the Movie Camera is connected to your personal computer, you can send video and sound from the Movie Camera to the other parties via the network. Audio may also be exchanged if the personal computer is configured accordingly. (You can use the microphone equipped with the personal computer instead of the one on the Movie Camera.)

● Refer to Page 7 for the minimum requirements.

■ Connecting the Movie Camera to Personal Computer (For Using as a Web Camera)

- 1 Install WebCam Driver and then make the Movie Camera recognized by a personal computer. (→ 11)
- 2 Set [CAMERA] >> [USB FUNCTION] >> [WEB CAMERA].
- 3 Connect the Movie Camera to Personal Computer with auxiliary USB Connection Cable.
- 4 Start the Windows Messenger.

● Click [Start] >> [Programs] >> [Windows Messenger].

- 1) Movie Camera
- 2) USB Connection Cable
- 3) USB terminal
- 4) Personal computer (not supplied)
- 5) The WEB CAMERA mode screen

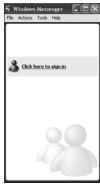
● To send pictures recorded on a tape to other personal computer using the Windows Messenger, set [PLAYBACK] >> [USB FUNCTION] >> [WEB CAMERA] on Tape Playback Mode before connecting the Movie Camera to your personal computer.



■ Setting up the Windows Messenger

When starting the Windows Messenger for the first time, its setup screen is displayed. (However, the screen is not displayed if the Windows Messenger setup has already been done.)

1



2



3



4



5



6



7



1 Click [Click here to sign in].

2 Select [.NET Messaging Service] and click [OK].

3 After the .NET Passport Wizard is displayed, click [Next].

- Please refer to the instruction manual of your personal computer for how to configure the audio and the microphone.
- To communicate with persons using Windows in other languages, setting up using alphabets or numbers is recommended.

4 According to the procedures displayed on the screen, continue the setup.

5 After the setup is completed, sign in and start the Windows Messenger.

- Windows Messenger is activated.
- Please refer to the HELP file of the Windows Messenger for understanding its operation.
- During set up, if [Primary video capture device] selection screen is displayed, [Panasonic DVC Web Camera] is selected.
- Send the sound by using the microphone attached to the Personal Computer.

6 Click [Tools] >> [Audio Tuning Wizard...] on the menu.

- Select the camera, microphone and speaker for setting.

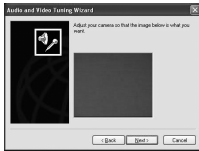
7 Read the message carefully and then click [Next].

8



8 Select [USB Video Device] on [Camera] and then click [Next].

9



9 Check if the video from the Movie Camera is displayed on the screen and then click [Next].

- The video from the Movie Camera looks horizontally reversed on the screen.

10



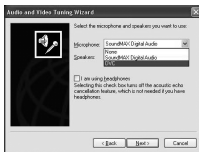
10 Read the message carefully and then click [Next].

11 Select [DVC] on [Microphone], the speaker to be used and then click [Next].

12 Adjust the volume of the speaker and then click [Next].

- You can hear the sound by clicking [Click to Test Speakers]. Adjust the adequate volume.

11

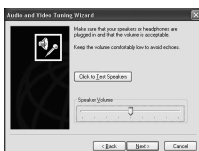


13 Adjust the volume of the microphone as indicated in the message and then click [Next].

14 Click [Finish].

- For communication, you need to set the items in [Add a Contact] on the Windows Messenger. For details, refer to the HELP file of the Windows Messenger.

12



13




14



Others

To disconnect USB cable safely

If USB cable is disconnected while computer is on, error dialogue may appear. In such case click [OK] and close the dialogue box. By following the steps below you can disconnect the cable safely.

- 1 Double click the  icon in task tray.
 - Hardware disconnect dialogue appears.
- 2 Select [Panasonic DVC USB-SERIAL Driver for Win XX (COM X)] ① and click [Stop].
- 3 Verify [Panasonic DVC USB-SERIAL Driver for Win XX (COM X)] is selected and click [OK].
 - Click [OK], and you can safely disconnect the cable.

Note on the driver name ① displayed

The driver name displayed will differ depending on your OS, operating environment and the mode of the Movie Camera.

Windows XP:

(When the Movie Camera is in Tape Recording Mode or Tape Playback Mode:)

[Panasonic DVC USB-SERIAL Driver for Win XX (COM X)]

(The numeral designation after "Win XX" will differ depending on the OS. The numeral after "COM" will differ depending on the operating environment of your personal computer.)

Windows XP/2000:

(When the Movie Camera is in PC Accessing Mode:)

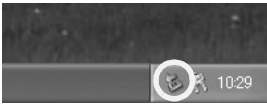
[USB Mass Storage Device]

Windows Me:

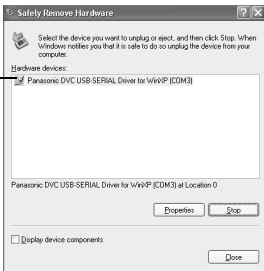
[USB Disk]

- If you use Windows 98SE, the icon is not displayed on the task tray.
- Make sure Movie Camera's function light is off and disconnect the cable. Please also read the Movie Camera's Operating Instructions.

1



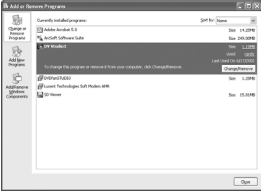
2



3



1



If you no longer need software or driver (Uninstall)

The screens may vary with the type of the OS. (In this manual, explanation is offered with Windows XP screen.)

- 1 Select [Start] (>> [Settings]) >> [Control Panel], select the software or the driver from [Add/Remove Programs] to uninstall.**

- Uninstalling steps may vary depending on the OS. Please refer to the user manual of your OS.

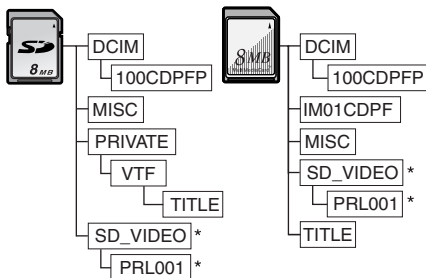
When SD Viewer and DV STUDIO are installed if either of them is uninstalled, you cannot open DVF files. In this case, uninstall the rest of the software first and then install both again.

Notes

- Do not disconnect USB Connection Cable while the operation light of the Movie Camera is on. It may freeze the software or destroy the data in transfer. Please refer to the Operating Instructions of Movie Camera.
- If you use Windows Me/98SE, the message, "File is not found" may be displayed when the Movie Camera is connected for the first time. Enter the following paths to complete the connection: If the message "MTDV98M3.pdr is not found" is displayed, enter "C:\WINDOWS\system\IOSUBSYS". If the message "MTDV98M3.sys is not found" is displayed, enter "C:\WINDOWS\system32\DRIVERS".
(The paths will differ depending on the environment of your personal computer.)
- When the Movie Camera is switched to the PC Accessing Mode while it is connected to the personal computer, the operation mode of the Movie Camera cannot be switched. In this case, disconnect the USB Connection Cable. Switch the operation mode of the Movie Camera and reconnect the Cable.
- If the Movie Camera is connected in the PC Accessing Mode, the [Removable Disk] icon representing the Memory Card drive is displayed in [My Computer].
- If the Movie Camera is used as a Web Camera, the quality of the video to be exchanged will depend on the Internet connection status.
- If the USB Connection Cable is disconnected from the personal computer, the WEB CAMERA mode is cancelled.
- In the WEB CAMERA mode, video (picture) cannot be recorded onto a tape or a card.
- In the WEB CAMERA mode, the audio may be interrupted in the midway of communication depending on the communication environment or the performance of the personal computer.
- When the Tape Recording Mode of the Movie Camera is switched to the PC Accessing Mode, a warning message may be displayed. You may simply ignore it.
- When you are using Windows XP or Windows 2000, you may install or uninstall this software after logging on by setting the user name to Administrator or to a user name having equivalent authority.
- If the Movie Camera is used as a Web Camera while virus checking software is running, the Movie Camera's operation may stop midway through. In this case, exit the Windows Messenger, reconnect the Movie Camera and restart the Windows Messenger.
- We recommend using AC adapter as the power source for the Movie Camera when using USB Connection Kit. Data may be lost if the battery power is lost while transferring.
- Do not delete the folders in memory card. Memory card may not be recognized if deleted.
- If you install the USB Driver while the USB Connecting Cable is being connected, or if you don't follow these Operating Instructions, the Movie Camera will not be recognized correctly. In this case, delete the USB Driver from [Device Manager] as described below, uninstall the USB Driver, and re-install it.
 - ① Set the Movie Camera to Tape Recording Mode or Tape Playback Mode, connect it to the personal computer, and delete [Panasonic DVC USB-SERIAL Driver for Win XX (COM X)] (or [Panasonic Serial USB Driver]) from [Device Manager]. The numeral designation after "Win XX" will differ depending on the OS. (Win 98, Win Me, Win XP)
 - ② Set the Movie Camera to PC Accessing Mode and delete [Panasonic DVC SD Disk Drive]. (If you use Windows 98SE, also delete [Panasonic DVC USB Storage].)

Note on the folder structure of the Memory Card

- When a Card with data recorded on it is inserted into a personal computer, folders will be displayed as in the figure.



*When you use the model without MPEG4 functions, these folders will not be created.

[100CDPFP]: The images (IMGA0001.jpg, etc.) in this folder are recorded in the JPEG format.

[MISC]: Files in which DPOF Data has been set to the image are in this.

[TITLE]: This contains the data of the preset titles (PRE00001.ttl) and original titles (USR00001.jpg, USR00001.ttl, etc.).

[PRL001]: MPEG4 moving picture is recorded in ASF format (MOL001.ASF etc.). It can be played back with Windows Media Player (ver.6.4 and later). Because of small size, this File is well suited for transmitting data through telephone line etc.. To play back moving picture with Windows Media Player, select a file and double click. Necessary software is automatically downloaded and starts playing back. (Internet connection is required.)

• [DCIM], [IM01CDPF], [PRIVATE], [VTF], [SD_VIDEO] etc. are necessary items in the folder structure. They have nothing to do with actual operations.

• In the PC Accessing Mode, the Movie Camera automatically saves file numbers (IMGA0001.jpg, etc.) along with the images. The file numbers are recorded with each image as a consecutive number.



VQT0K88
F0204Hy0 (6500 (A))



Matsushita Electric Industrial Co., Ltd.
Web site: <http://www.panasonic.co.jp/global/>