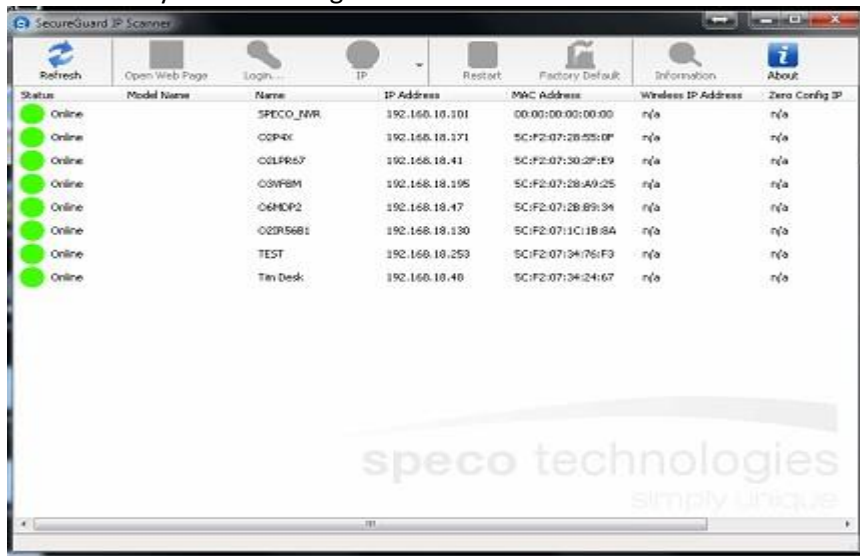
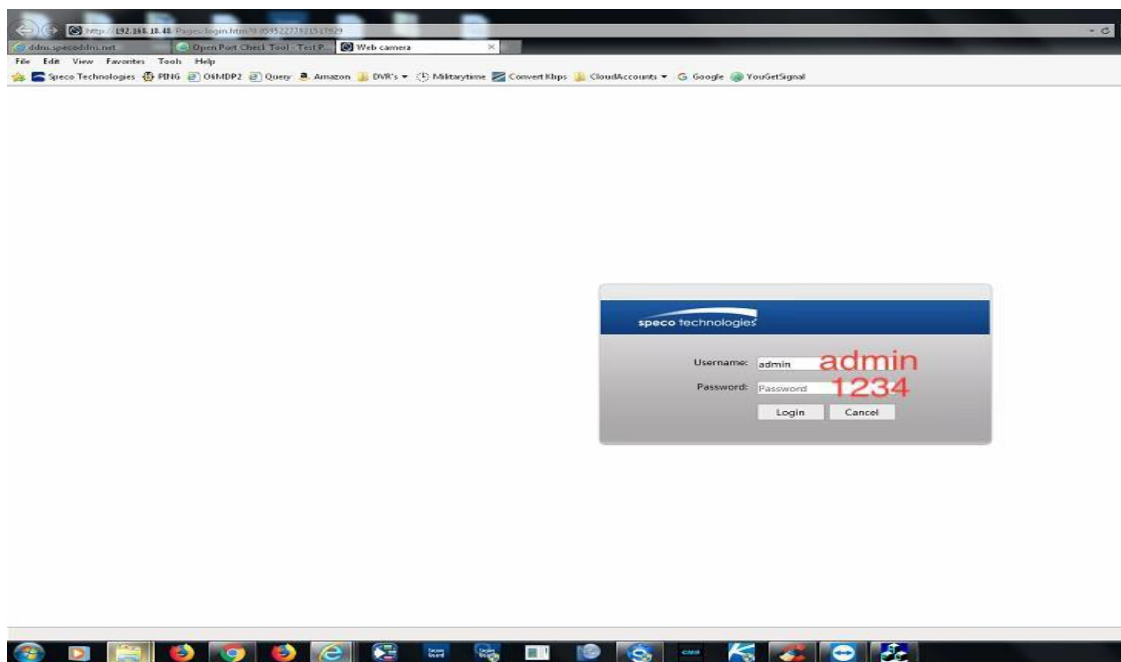


How to log into IP cameras? How to upgrade IP cameras?

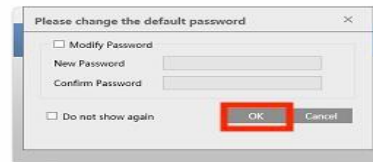
- 1) Click on the link to download the **Secure Guard IP Scanner**.
https://specotech.com/wp-content/uploads/2019/07/ipscanner_setup_2014.8.13.1.exe.zip
- 2) Once downloaded open the **IP Scanner** and you will see the following. Double click on the camera that you want to login to.



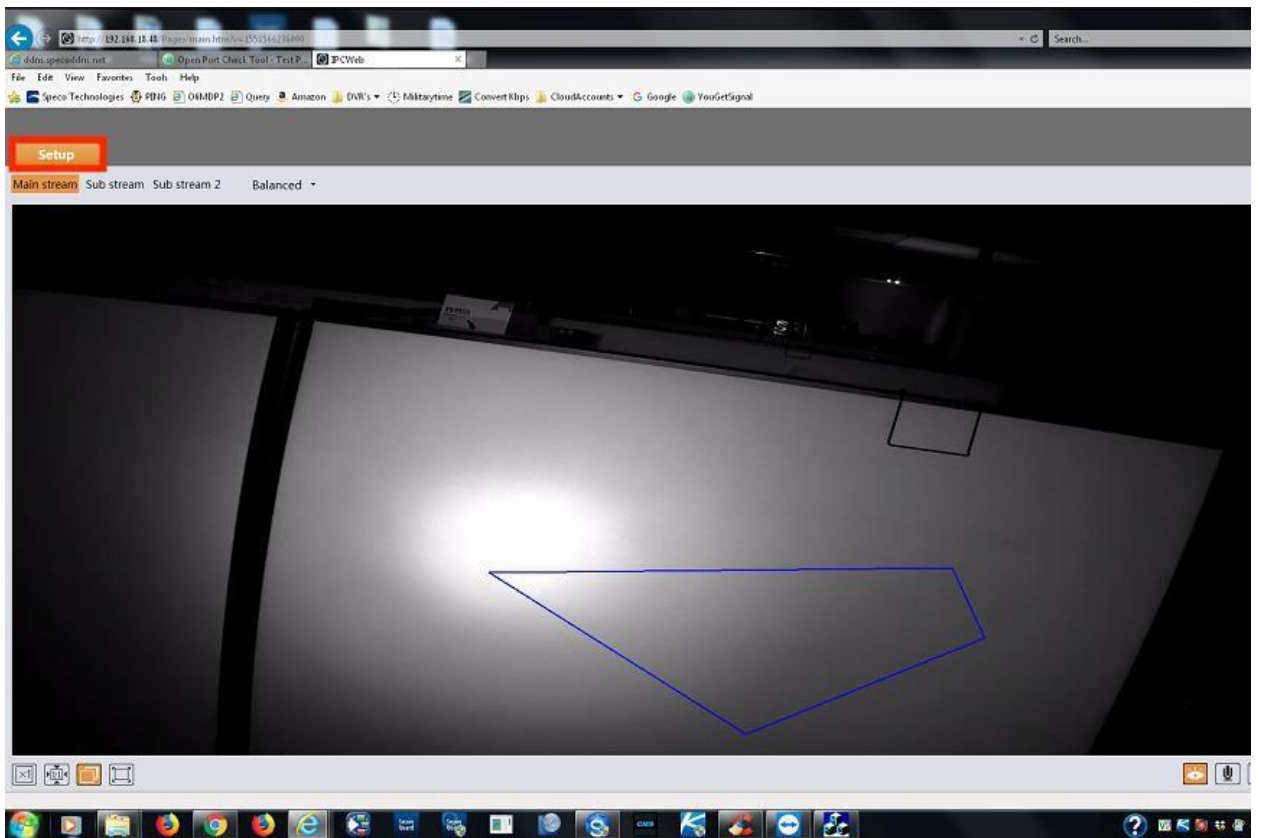
- 3) It will open up the login page in your default browser (the plugin **only** downloads on **internet explorer**) The default username is admin. The default password is 1234.



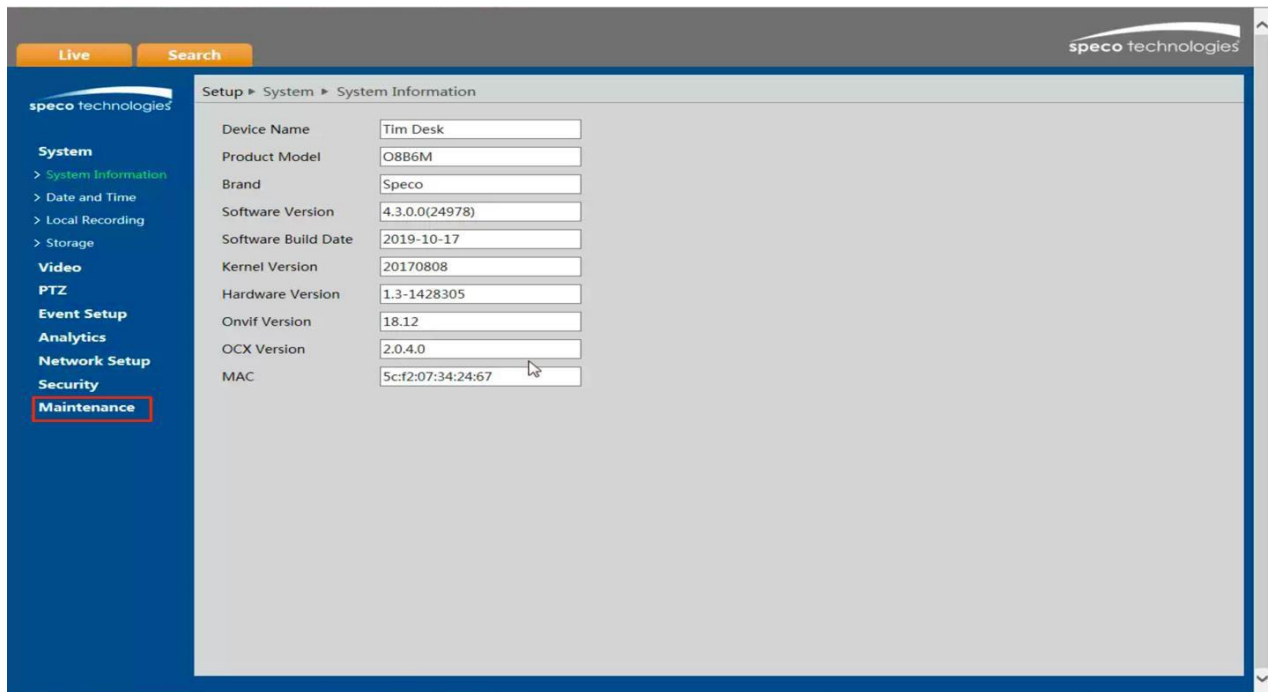
- 4) When you go to **login** it will ask you to change the **default password**. You can just click “**ok**” if you do not want to change the password.



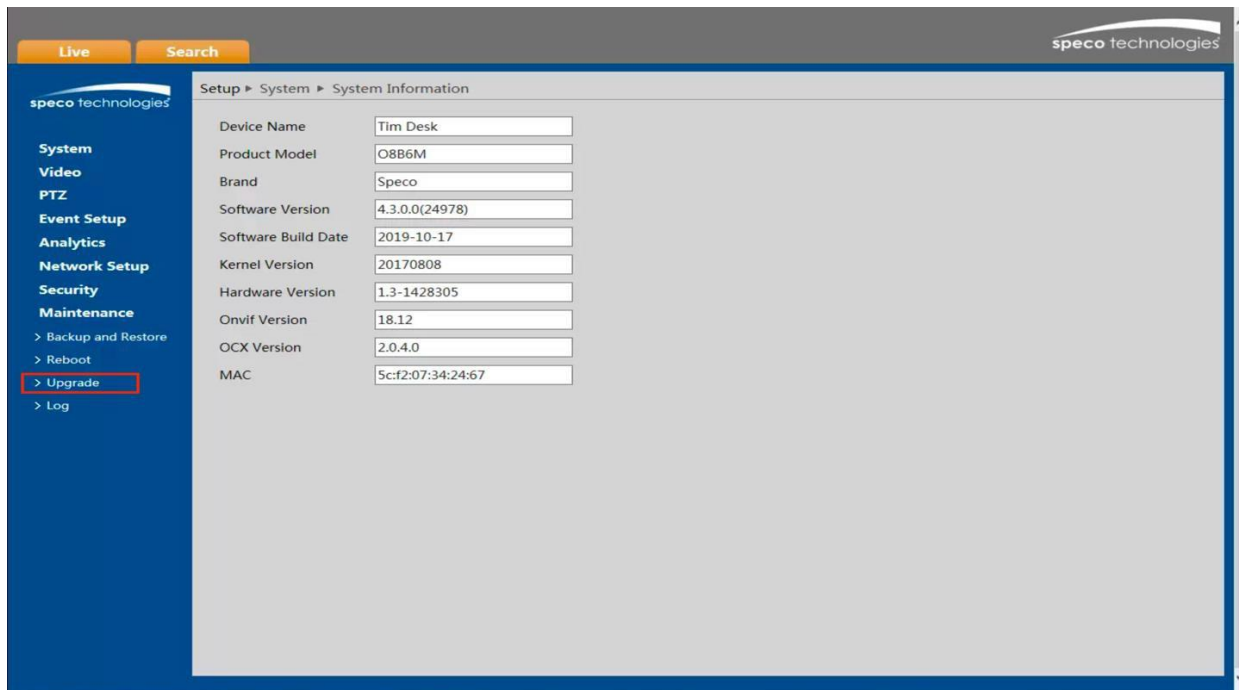
- 5) When you log into the camera you will see the following screen. Click on **setup** menu as shown below.



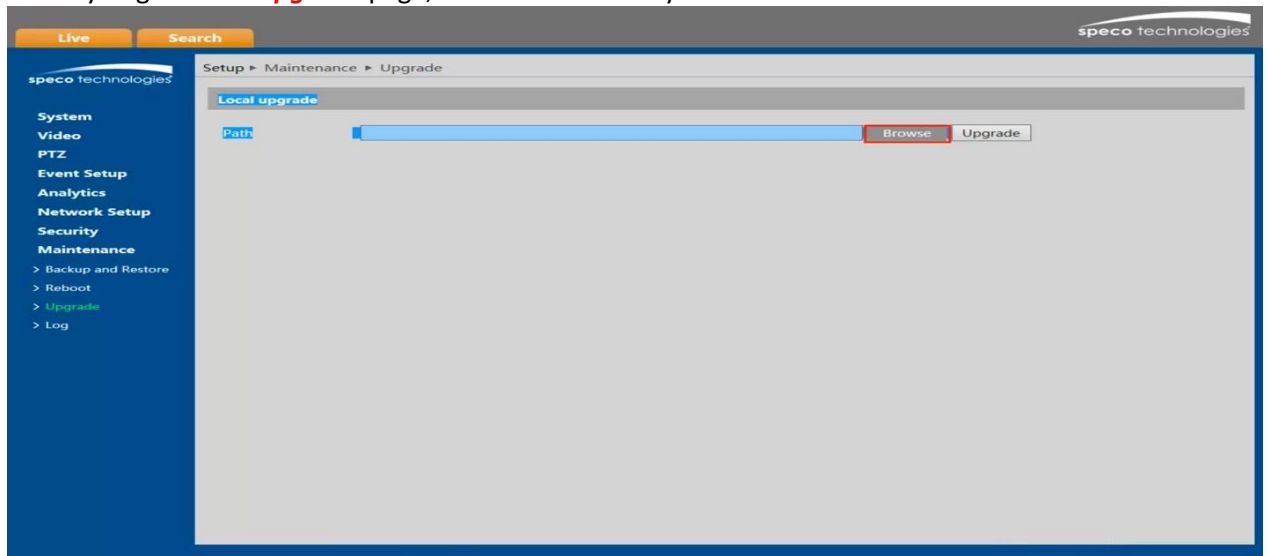
- 6) When you get the **setup** menu you will see the following screen. Click on maintenance as shown below.



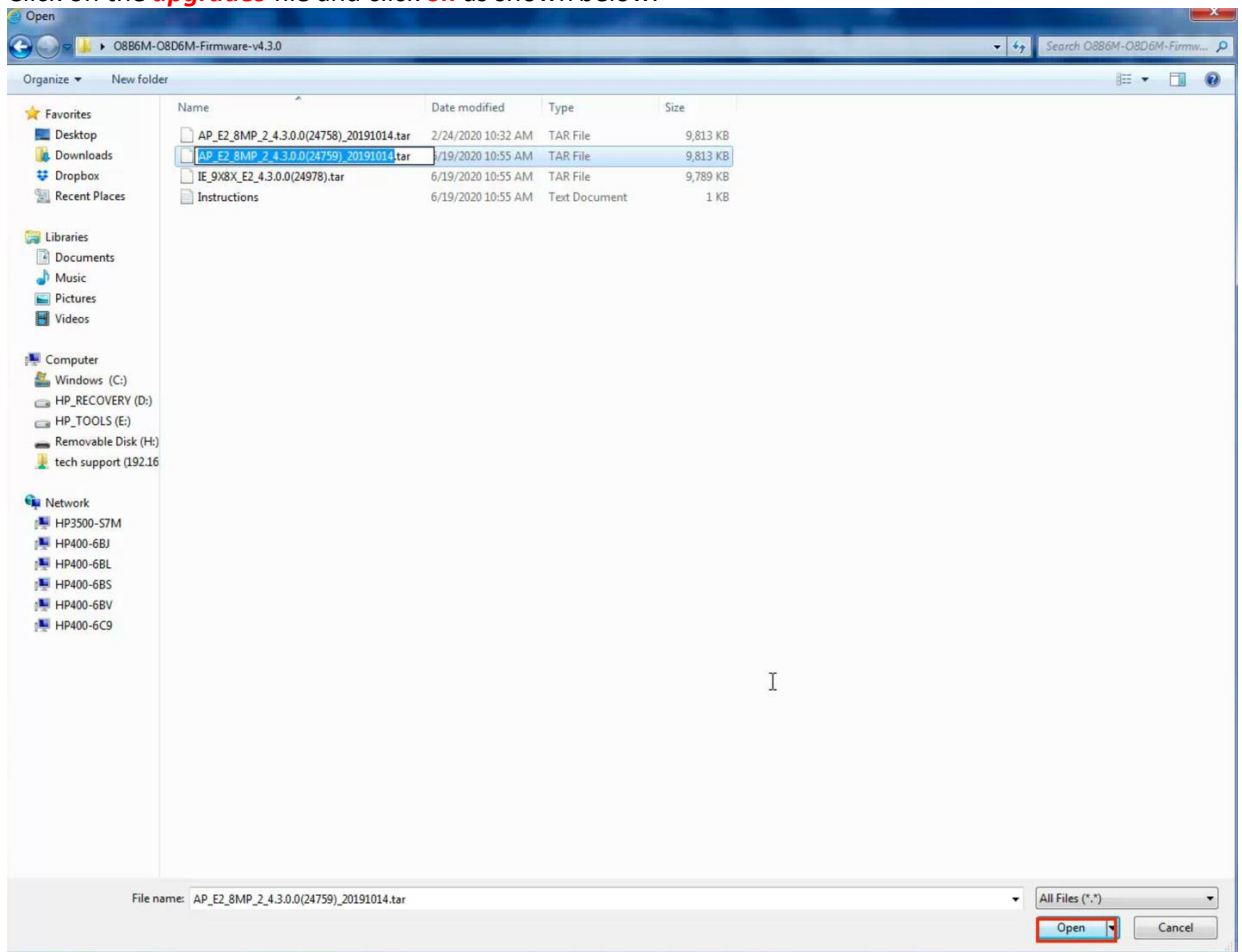
- 7) When you open the **maintenance** tab, click on **upgrade** as shown below.



- 8) When you get to the **upgrade** page, click on browse so you can **browse** for the file.



- 9) Click on the **upgrades** file and click **ok** as shown below.



10.) After you select the firmware click the **upgrade** tab and the following screen will display. Click **Ok**.

