

## WiFi Smart Light User Manual

### Overview

#### Main Function

- 1.Work with Amazon Alexa/Echo Dot&Google home & IFTTT.
- 2.Manage your devices via your mobile phone or Voice Control.
- 3.Bulb function: Timer setting;Scene mode; Long range control.

#### 4.Ensure that the router is 2.4G frequency.

#### FAQS:

- 1.Before connecting(or reconnecting), please make sure the bulb is flashing
  - 2.Support multiple devices connection at the same time
  - 3.If there is a bulb connection error occurs, please disconnect the power supply for 10 seconds before reconnecting
- If problem remains, please feel free to email us at [service@hello-ify.com](mailto:service@hello-ify.com)

-1-

### How it works

#### Turn on Intelligence

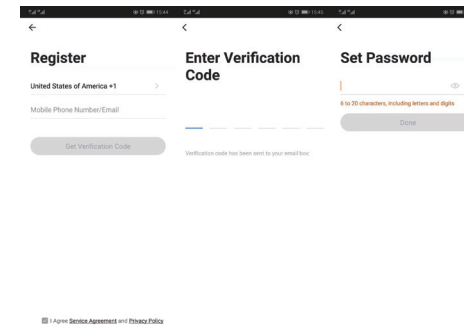
Use your phone to scan the QR code below or search "smart life" in application markets to download and install the APP



Step 1: Registration and login "smart life" APP.If you don't have the account of "Smart life" APP register an account or sign in with cellphone number/e-mail. This page describes the Registration process

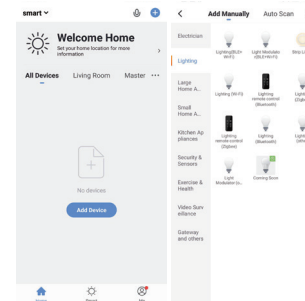
1. Tap "Register" in the upper right
2. The system automatically determines your country/area. You can also select your country code by yourself. Enter the cellphone number/e-mail and tap "Get Verification Code"
3. Enter the verification code in the message/e-mail
4. Enter the password, tap "Done" to finish your registration

-2-



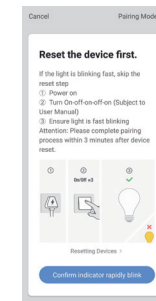
-3-

Make sure your phone is connected to wifi in your home. Click "+" in the upper right corner of the homepage and select "Lighting" from the device type.



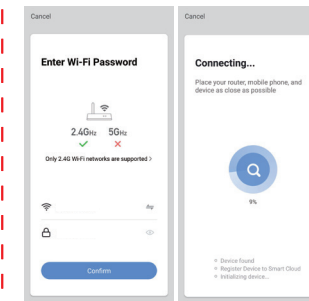
-4-

Step 2: To connect the Light bulb to your WiFi ensure the light bulb is flashing quickly.If the light bulb isn't flashing quickly when you have plugged in your switch , please do quickly switch off & run on power 3 times to reset the device into connection mode.



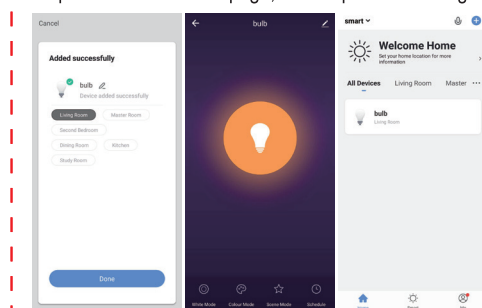
-5-

Step 3:Select "Finish Network Configuration" when the light bulb is flashing quickly. Enter the Home router account and password.



-6-

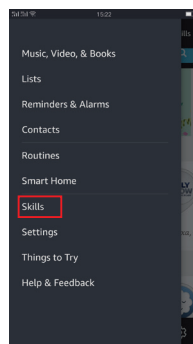
Step 4:Enter the device page,the complete the configuration



-7-

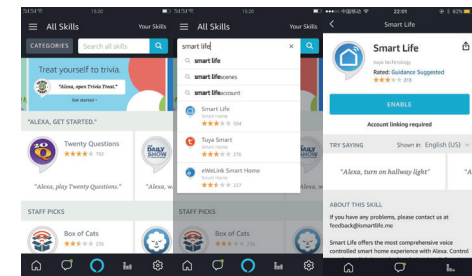
### How it work with Amzaon Alexa & Echo

Step1: Open the "Amazon Alexa "APP,then find the "Skills " button on the menu.press it.



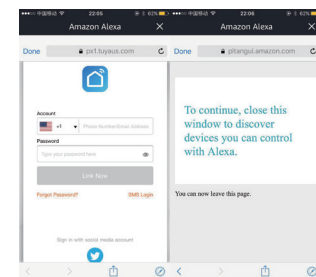
-8-

Step 2: Search the "Smart life"and choose the first one, then Enable it.



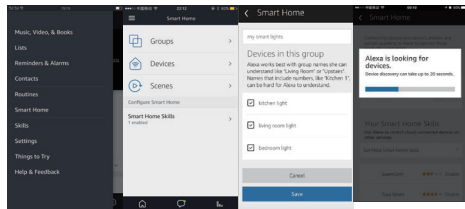
-9-

Step 3:Select your country code and Enter your "Smart life" APP Account and Password,then press the "Link Now" button.When the Account success to login press the "Done" button.



-10-

Step 4:Back to the menu ,and press the "Smart home" button,then choose the "Devices" ,then press the "Devices" button



-11-

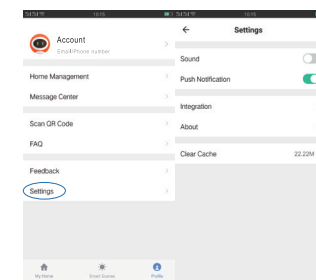
Step 5:Now you can your Alexa to control your Smart devices,enjoy yourself.

#### Support Skill list

- Alexa, turn on/off [bedroom light]
- Alexa, set [bedroom light] to 50 percent
- Alexa, brighten/dim [bedroom light]
- Alexa, set [bedroom light] to green
- Alexa, set [bedroom light] to warm white

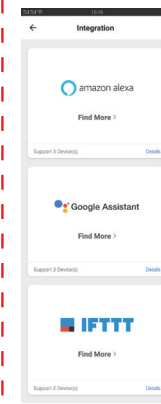
### How it work with Google Home/IFTTT

Step 1:Click the "Integration" in Profile page of the Smart Life APP.



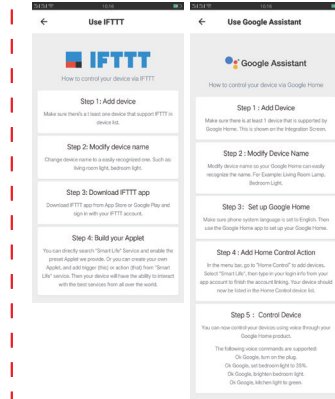
-12-

Step 2:You can see those three APP.And click "Use Now", you will see how to use them to control you smart socket.



-13-

Step 3:Flow the step in those APP.Just like the Amazon Alexa/Echo.



-14-